

Data Path : Z:\voasrv\HPCHEM1\MSVOA_D\Data\VD031621\
 Data File : VD068624.D
 Acq On : 16 Mar 2021 11:35
 Operator : VA/SY
 Sample : VD0316SBL01
 Misc : 5.00G/5.00ml/MSVOA_D/SOIL
 ALS Vial : 3 Sample Multiplier: 1

Instrument :
 MSVOA_D
 ClientSampled :

Quant Time: Mar 17 01:04:24 2021
 Quant Method : Z:\voasrv\HPCHEM1\MSVOA_D\Method\82D022621S.M
 Quant Title : SW846 8260
 QLast Update : Fri Feb 26 14:04:14 2021
 Response via : Initial Calibration

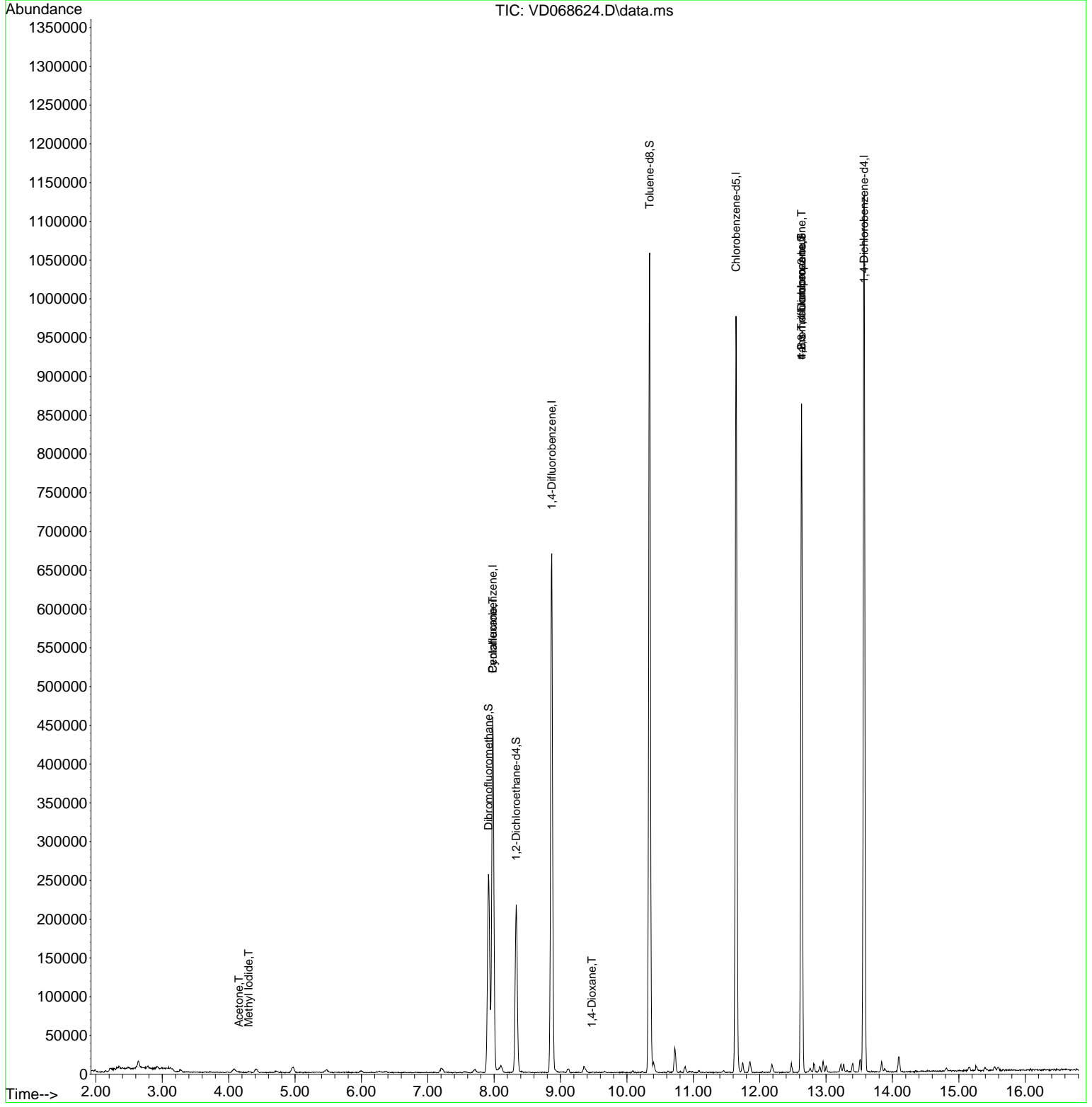
Compound	R.T.	QIon	Response	Conc	Units	Dev(Min)
Internal Standards						
1) Pentafluorobenzene	7.979	168	346505	50.00	ug/l	0.00
34) 1,4-Difluorobenzene	8.867	114	605554	50.00	ug/l	0.00
63) Chlorobenzene-d5	11.643	117	583051	50.00	ug/l	0.00
72) 1,4-Dichlorobenzene-d4	13.573	152	310934	50.00	ug/l	0.00
System Monitoring Compounds						
33) 1,2-Dichloroethane-d4	8.332	65	166692	48.15	ug/l	0.00
Spiked Amount	50.000	Range	50 - 163	Recovery	=	96.30%
35) Dibromofluoromethane	7.914	113	186540	51.14	ug/l	0.00
Spiked Amount	50.000	Range	54 - 147	Recovery	=	102.28%
50) Toluene-d8	10.344	98	761477	52.41	ug/l	0.00
Spiked Amount	50.000	Range	49 - 140	Recovery	=	104.82%
62) 4-Bromofluorobenzene	12.632	95	262811	56.12	ug/l	0.00
Spiked Amount	50.000	Range	25 - 144	Recovery	=	112.24%
Target Compounds						
10) Methyl Iodide	4.303	142	852	2.81	ug/l #	69
16) Acetone	4.156	43	1465	2.66	ug/l #	44
20) Methylene Chloride	4.956	84	5601	Below Cal	#	85
31) Cyclohexane	7.979	56	9983	1.59	ug/l #	43
49) 1,4-Dioxane	9.473	88	59	2.41	ug/l #	30
76) 1,2,3-Trichloropropane	12.632	75	135360	49.04	ug/l #	100
81) trans-1,4-Dichloro-2-b...	12.632	75	135360	114.44	ug/l #	13

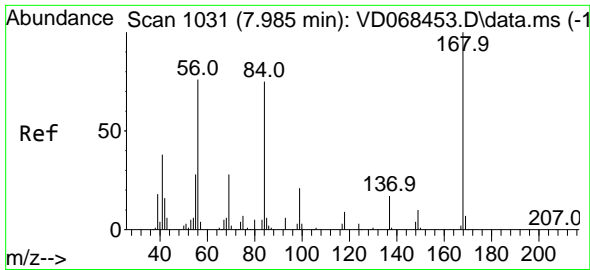
(#) = qualifier out of range (m) = manual integration (+) = signals summed

Data Path : Z:\voasrv\HPCHEM1\MSVOA_D\Data\VD031621\
 Data File : VD068624.D
 Acq On : 16 Mar 2021 11:35
 Operator : VA/SY
 Sample : VD0316SBL01
 Misc : 5.00G/5.00ml/MSVOA_D/SOIL
 ALS Vial : 3 Sample Multiplier: 1

Instrument :
 MSVOA_D
 ClientSampleId :

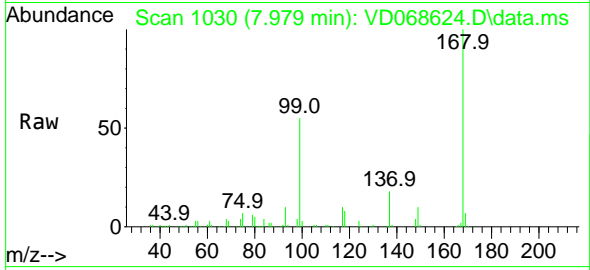
Quant Time: Mar 17 01:04:24 2021
 Quant Method : Z:\voasrv\HPCHEM1\MSVOA_D\Method\82D022621S.M
 Quant Title : SW846 8260
 QLast Update : Fri Feb 26 14:04:14 2021
 Response via : Initial Calibration



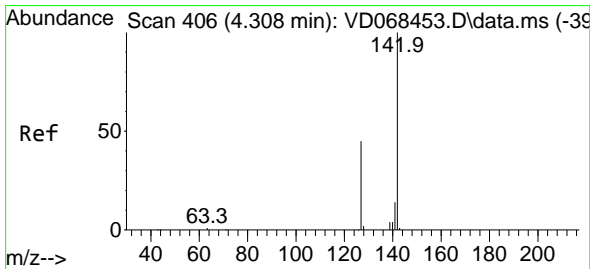
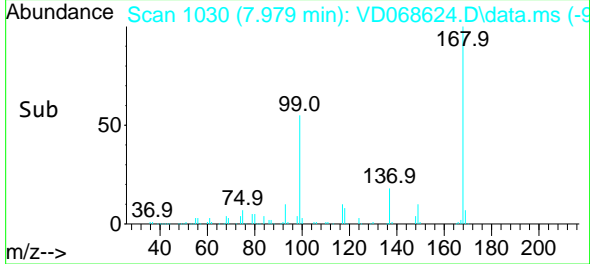
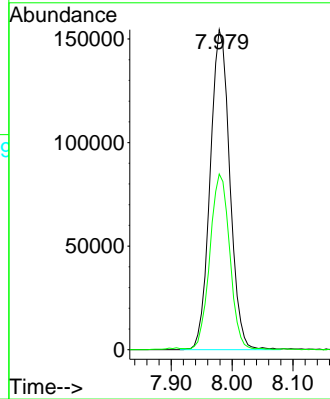


#1
 Pentafluorobenzene
 Concen: 50.00 ug/l
 RT: 7.979 min Scan# 1030
 Delta R.T. -0.006 min
 Lab File: VD068624.D
 Acq: 16 Mar 2021 11:35

Instrument :
 MSVOA_D
 ClientSampled :

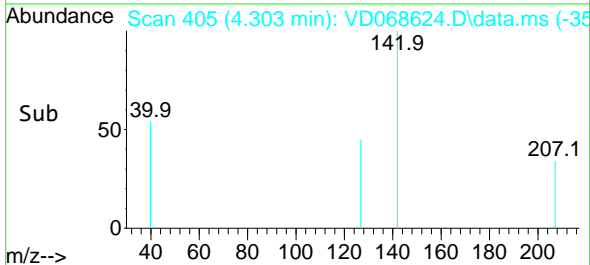
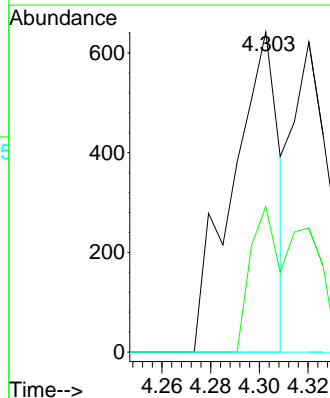
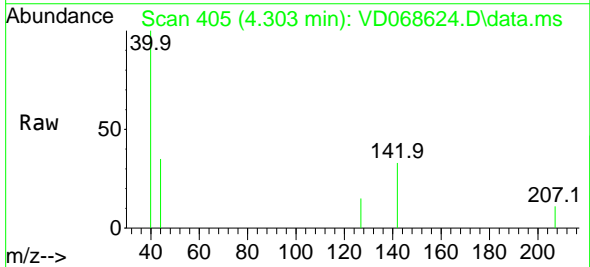


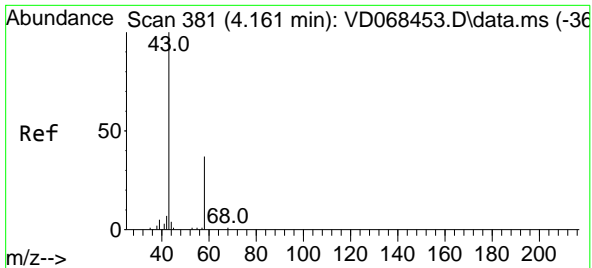
Tgt Ion:168 Resp: 346505
 Ion Ratio Lower Upper
 168 100
 99 54.7 43.5 65.3



#10
 Methyl Iodide
 Concen: 2.81 ug/l
 RT: 4.303 min Scan# 405
 Delta R.T. -0.005 min
 Lab File: VD068624.D
 Acq: 16 Mar 2021 11:35

Tgt Ion:142 Resp: 852
 Ion Ratio Lower Upper
 142 100
 127 27.6 37.9 56.9#
 141 0.0 11.5 17.3#

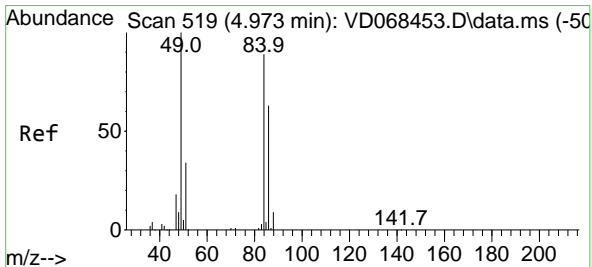
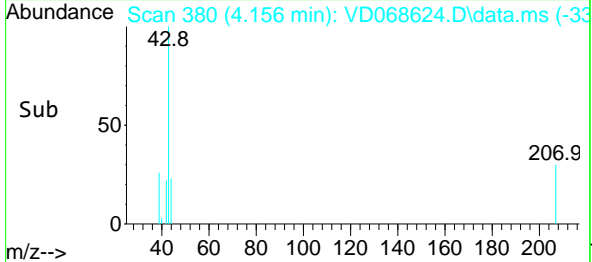
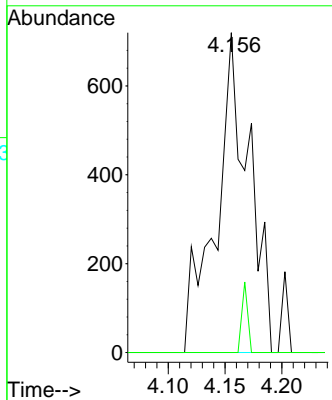
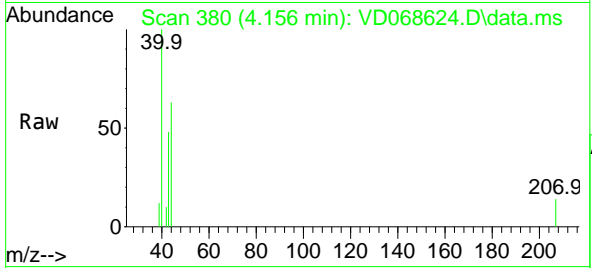




#16
 Acetone
 Concen: 2.66 ug/l
 RT: 4.156 min Scan# 380
 Delta R.T. -0.006 min
 Lab File: VD068624.D
 Acq: 16 Mar 2021 11:35

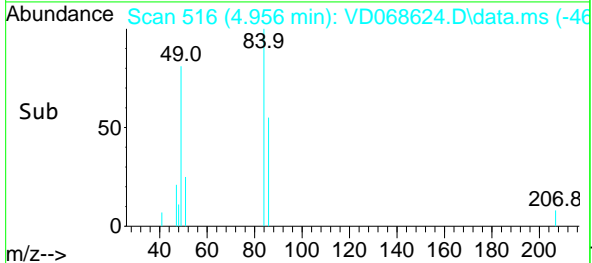
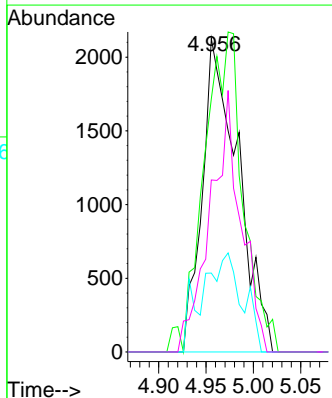
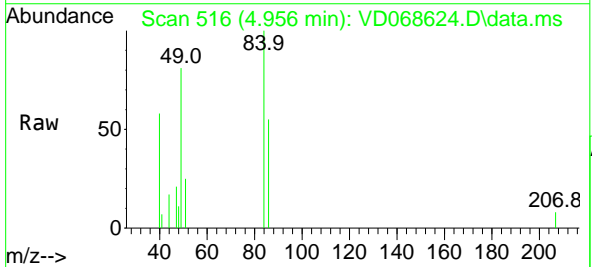
Instrument :
 MSVOA_D
 ClientSampled :

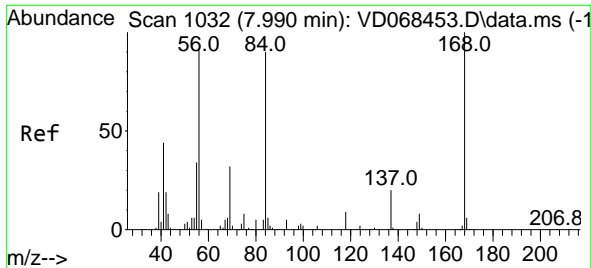
Tgt Ion: 43 Resp: 1465
 Ion Ratio Lower Upper
 43 100
 58 0.0 24.2 36.4#



#20
 Methylene Chloride
 Concen: Below Cal
 RT: 4.956 min Scan# 516
 Delta R.T. -0.017 min
 Lab File: VD068624.D
 Acq: 16 Mar 2021 11:35

Tgt Ion: 84 Resp: 5601
 Ion Ratio Lower Upper
 84 100
 49 80.7 77.4 116.2
 51 25.2 26.1 39.1#
 86 54.9 51.8 77.8

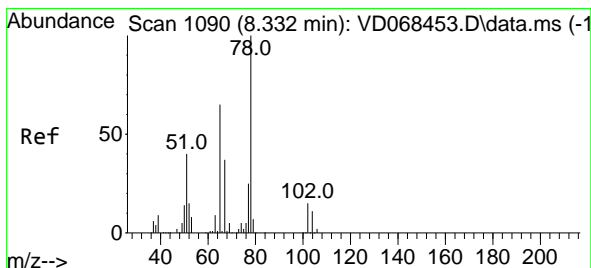
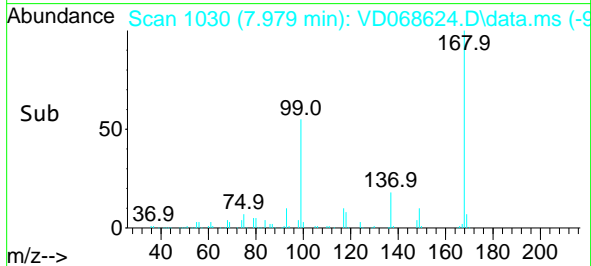
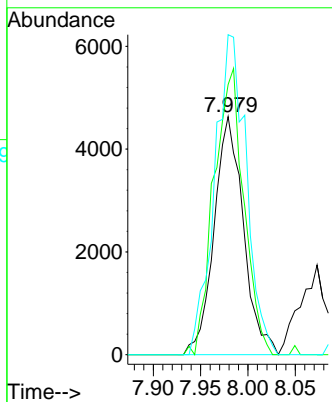
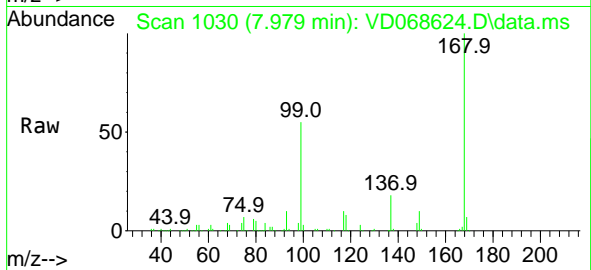




#31
 Cyclohexane
 Concen: 1.59 ug/l
 RT: 7.979 min Scan# 1030
 Delta R.T. -0.012 min
 Lab File: VD068624.D
 Acq: 16 Mar 2021 11:35

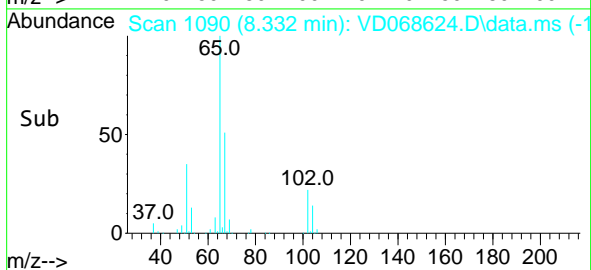
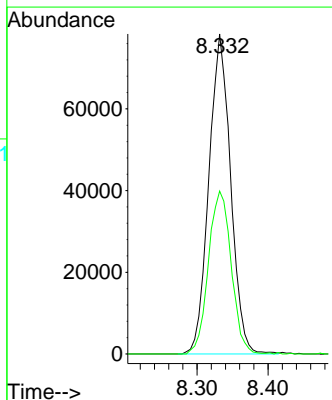
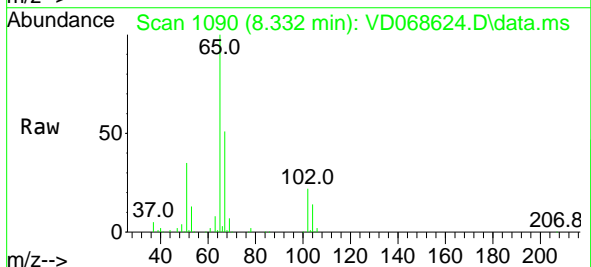
Instrument :
 MSVOA_D
 ClientSampled :

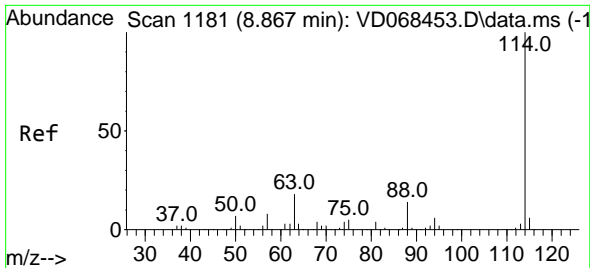
Tgt Ion: 56 Resp: 9983
 Ion Ratio Lower Upper
 56 100
 69 113.4 30.1 45.1#
 84 134.4 82.1 123.1#



#33
 1,2-Dichloroethane-d4
 Concen: 48.15 ug/l
 RT: 8.332 min Scan# 1090
 Delta R.T. 0.000 min
 Lab File: VD068624.D
 Acq: 16 Mar 2021 11:35

Tgt Ion: 65 Resp: 166692
 Ion Ratio Lower Upper
 65 100
 67 53.2 0.0 105.0

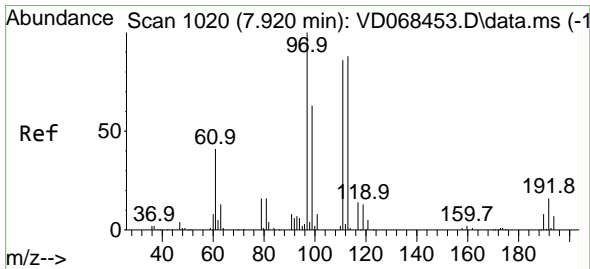
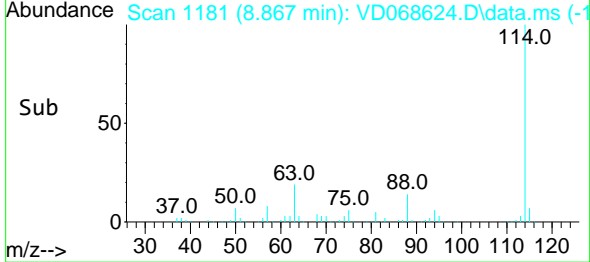
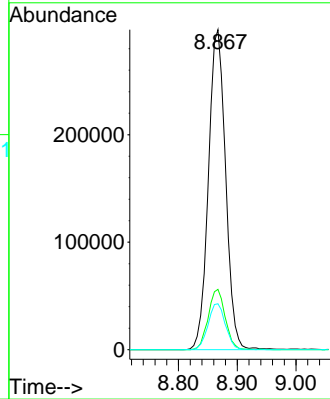
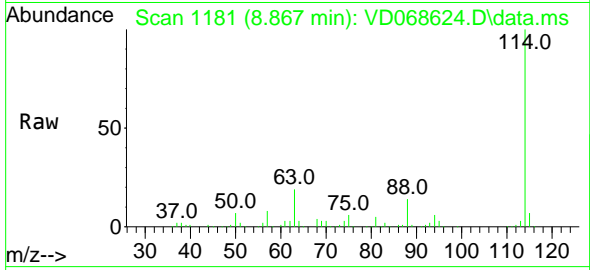




#34
 1,4-Difluorobenzene
 Concen: 50.00 ug/l
 RT: 8.867 min Scan# 1181
 Delta R.T. 0.000 min
 Lab File: VD068624.D
 Acq: 16 Mar 2021 11:35

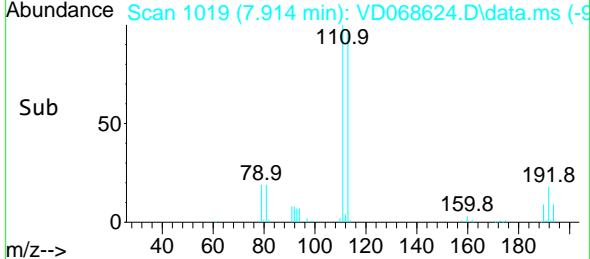
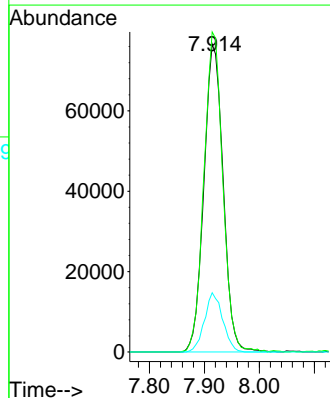
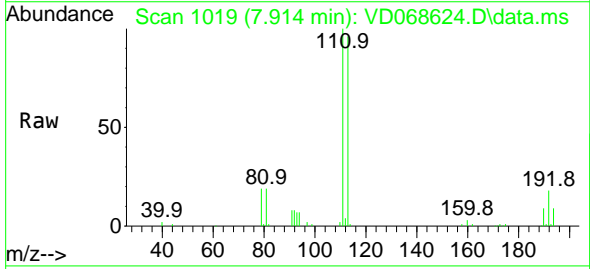
Instrument :
 MSVOA_D
 ClientSampled :

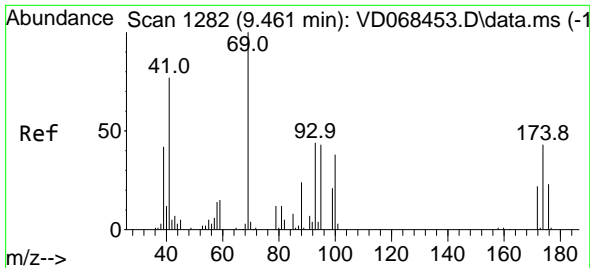
Tgt Ion	Resp	Lower	Upper
114	100		
63	18.9	0.0	34.8
88	14.4	0.0	31.6



#35
 Dibromofluoromethane
 Concen: 51.14 ug/l
 RT: 7.914 min Scan# 1019
 Delta R.T. -0.006 min
 Lab File: VD068624.D
 Acq: 16 Mar 2021 11:35

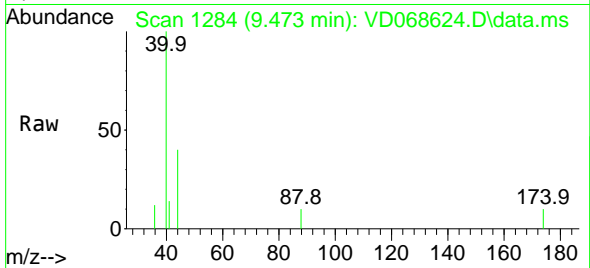
Tgt Ion	Resp	Lower	Upper
113	100		
111	101.7	81.4	122.0
192	18.2	16.1	24.1



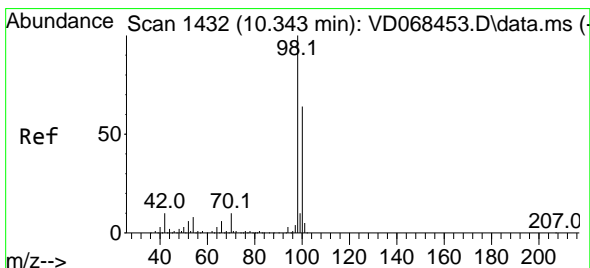
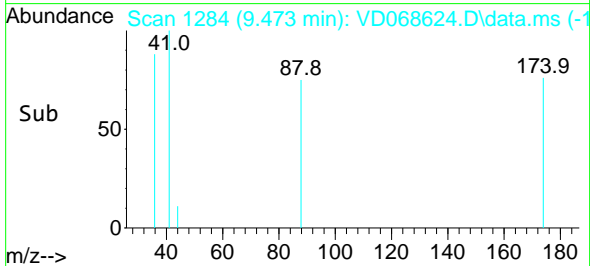
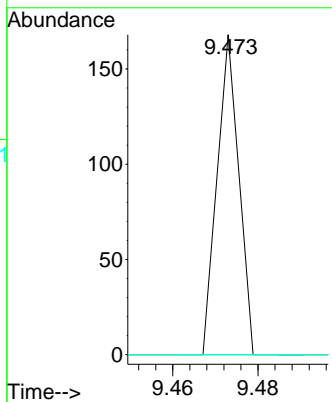


#49
 1,4-Dioxane
 Concen: 2.41 ug/l
 RT: 9.473 min Scan# 1284
 Delta R.T. 0.012 min
 Lab File: VD068624.D
 Acq: 16 Mar 2021 11:35

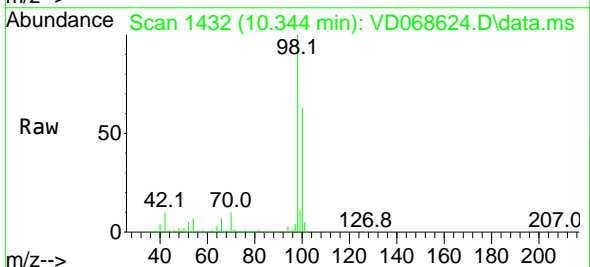
Instrument :
 MSVOA_D
 ClientSampled :



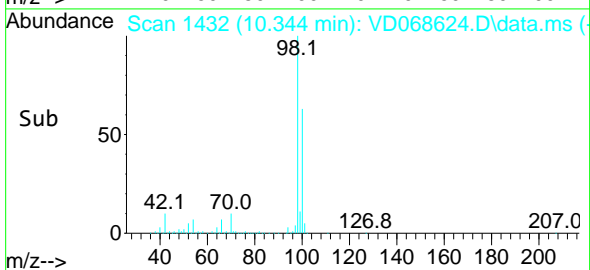
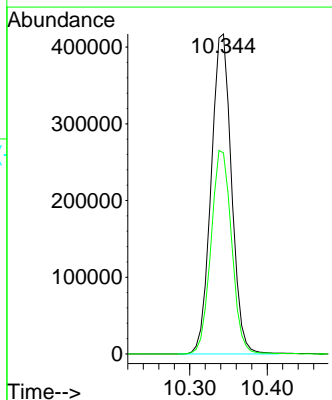
Tgt Ion: 88 Resp: 59
 Ion Ratio Lower Upper
 88 100
 43 0.0 22.1 33.1#
 58 0.0 46.7 70.1#

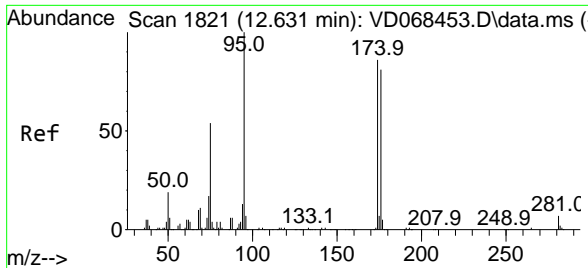


#50
 Toluene-d8
 Concen: 52.41 ug/l
 RT: 10.344 min Scan# 1432
 Delta R.T. 0.000 min
 Lab File: VD068624.D
 Acq: 16 Mar 2021 11:35



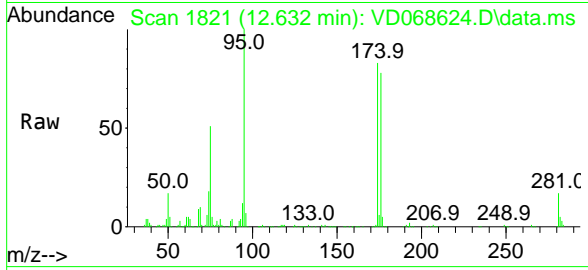
Tgt Ion: 98 Resp: 761477
 Ion Ratio Lower Upper
 98 100
 100 64.6 53.0 79.4





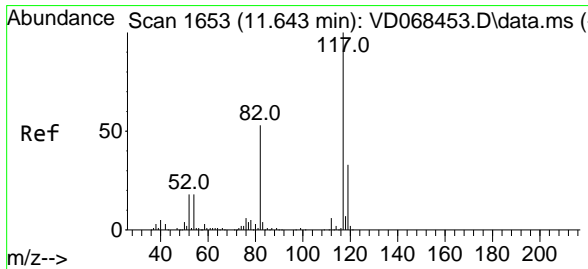
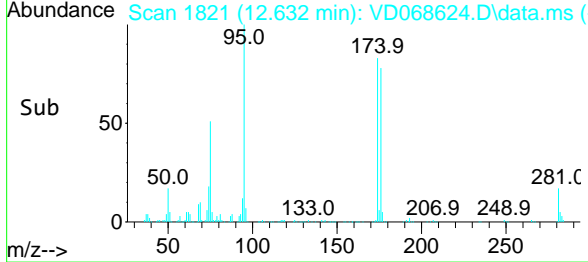
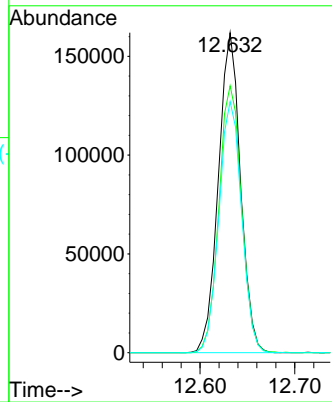
#62
 4-Bromofluorobenzene
 Concen: 56.12 ug/l
 RT: 12.632 min Scan# 1821
 Delta R.T. 0.000 min
 Lab File: VD068624.D
 Acq: 16 Mar 2021 11:35

Instrument :
 MSVOA_D
 ClientSampled :

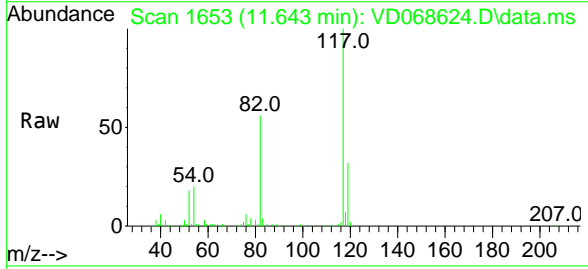


Tgt Ion: 95 Resp: 262811

Ion	Ratio	Lower	Upper
95	100		
174	85.2	0.0	172.4
176	80.5	0.0	168.4

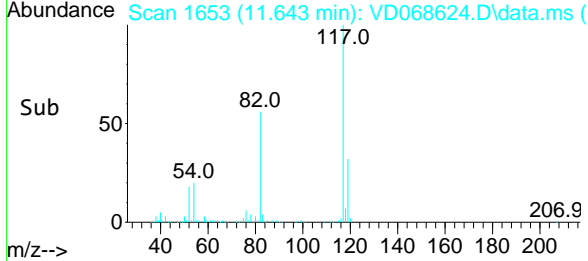
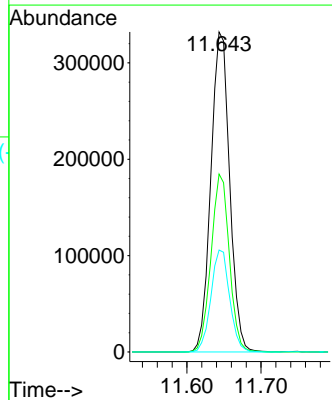


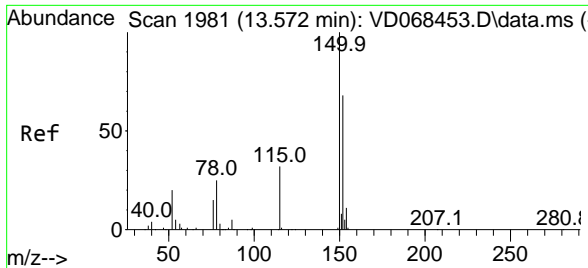
#63
 Chlorobenzene-d5
 Concen: 50.00 ug/l
 RT: 11.643 min Scan# 1653
 Delta R.T. 0.000 min
 Lab File: VD068624.D
 Acq: 16 Mar 2021 11:35



Tgt Ion: 117 Resp: 583051

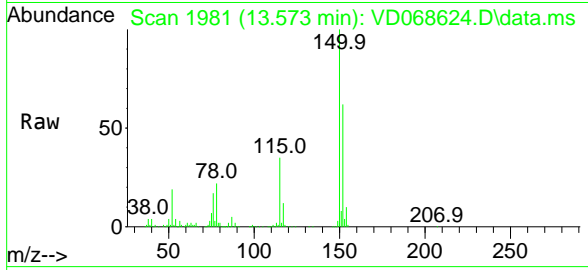
Ion	Ratio	Lower	Upper
117	100		
82	55.6	41.4	62.0
119	31.9	26.1	39.1





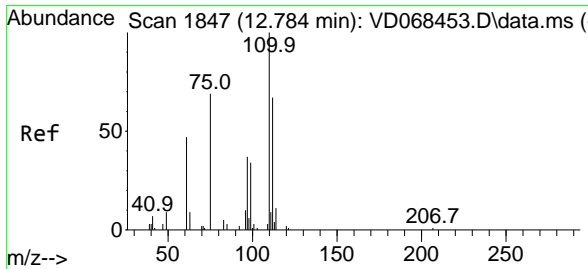
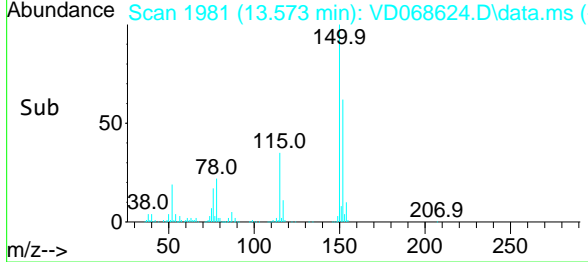
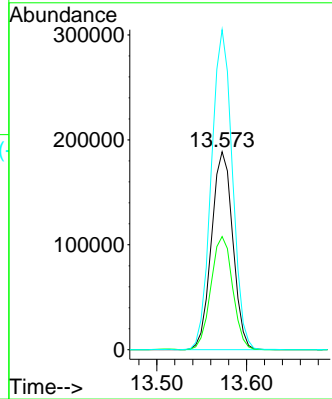
#72
 1,4-Dichlorobenzene-d4
 Concen: 50.00 ug/l
 RT: 13.573 min Scan# 1981
 Delta R.T. 0.001 min
 Lab File: VD068624.D
 Acq: 16 Mar 2021 11:35

Instrument :
 MSVOA_D
 ClientSampled :

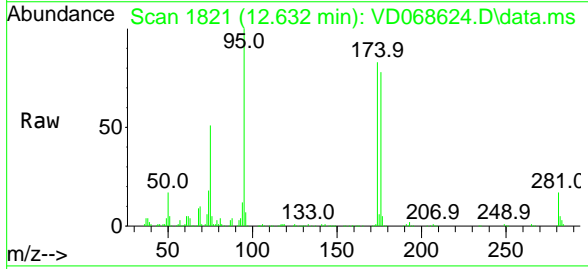


Tgt Ion:152 Resp: 310934

Ion	Ratio	Lower	Upper
152	100		
115	58.3	28.9	86.8
150	159.8	0.0	344.4

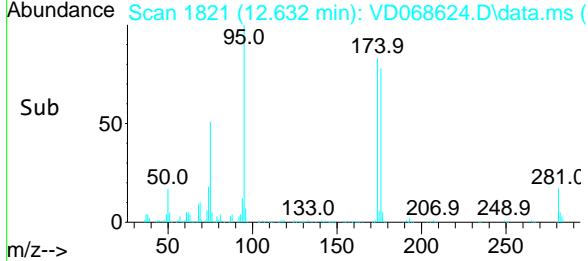
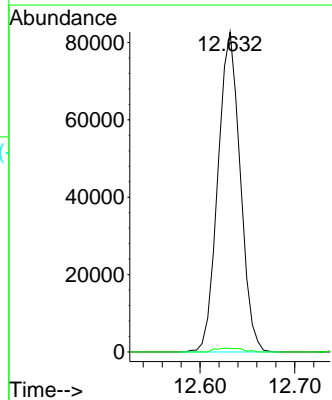


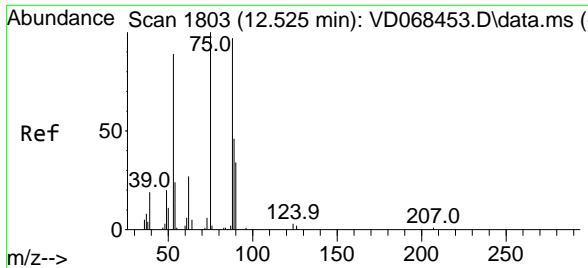
#76
 1,2,3-Trichloropropane
 Concen: 49.04 ug/l
 RT: 12.632 min Scan# 1821
 Delta R.T. -0.152 min
 Lab File: VD068624.D
 Acq: 16 Mar 2021 11:35



Tgt Ion: 75 Resp: 135360

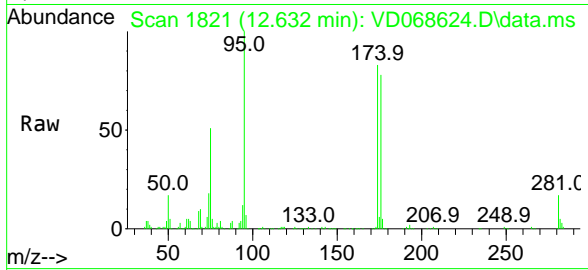
Ion	Ratio	Lower	Upper
75	100		
77	1.5	0.0	0.0#





#81
 trans-1,4-Dichloro-2-butene
 Concen: 114.44 ug/l
 RT: 12.632 min Scan# 1821
 Delta R.T. 0.106 min
 Lab File: VD068624.D
 Acq: 16 Mar 2021 11:35

Instrument :
 MSVOA_D
 ClientSampled :



Tgt Ion: 75 Resp: 135360

Ion	Ratio	Lower	Upper
75	100		
53	0.0	70.2	105.2#
89	0.1	40.3	60.5#

