

Data Path : Z:\voasrv\HPCHEM1\MSVOA_D\Data\VD031721\
 Data File : VD068642.D
 Acq On : 17 Mar 2021 17:17
 Operator : VA/SY
 Sample : M1707-01
 Misc : 5.02G/5.00ml/MSVOA_D/SOIL
 ALS Vial : 11 Sample Multiplier: 1

Instrument :
 MSVOA_D
 ClientSampleId :
 ELEVATOR-510-EL-167-157

Integration Parameters: RTEINT.P

Integrator: RTE
 Smoothing : ON
 Sampling : 1
 Start Thrs : 0.2
 Stop Thrs : 0

Filtering: 5
 Min Area: 3 % of largest Peak
 Max Peaks: 100
 Peak Location: TOP

If leading or trailing edge < 100 prefer < Baseline drop else tangent >
 Peak separation: 5

Method : Z:\voasrv\HPCHEM1\MSVOA_D\Method\82D022621S.M
 Title : SW846 8260

Signal : TIC: VD068642.D\data.ms

peak #	R.T. min	first scan	max scan	last scan	PK TY	peak height	corr. area	corr. % max.	% of total
1	4.156	373	380	392	rVB3	7531	21266	1.24%	0.193%
2	4.968	509	518	527	rVB4	11365	35188	2.05%	0.319%
3	7.914	1007	1019	1025	rBV	218936	541998	31.54%	4.915%
4	7.979	1025	1030	1042	rVB	373823	827900	48.18%	7.508%
5	8.332	1079	1090	1102	rBV	181834	403407	23.48%	3.658%
6	8.867	1170	1181	1191	rBV	582289	1172723	68.25%	10.635%
7	10.338	1423	1431	1440	rBV	947404	1700002	98.93%	15.416%
8	10.726	1491	1497	1505	rVB3	13031	23437	1.36%	0.213%
9	11.420	1609	1615	1619	rBV4	8009	17470	1.02%	0.158%
10	11.526	1628	1633	1643	rVB2	10367	18929	1.10%	0.172%
11	11.644	1645	1653	1664	rBV	869633	1498206	87.19%	13.586%
12	12.073	1721	1726	1733	rBV5	10030	19569	1.14%	0.177%
13	12.150	1733	1739	1746	rBV5	25607	60516	3.52%	0.549%
14	12.267	1752	1759	1764	rVB	30566	50394	2.93%	0.457%
15	12.344	1764	1772	1774	rBV5	13513	31286	1.82%	0.284%
16	12.397	1775	1781	1786	rVB7	14231	32809	1.91%	0.298%
17	12.632	1815	1821	1832	rVB	753482	1271021	73.97%	11.526%
18	12.797	1845	1849	1855	rVB8	12083	24937	1.45%	0.226%
19	12.873	1855	1862	1865	rBV5	13500	25598	1.49%	0.232%
20	12.955	1865	1876	1881	rBV3	38116	84165	4.90%	0.763%
21	13.008	1881	1885	1891	rVB5	20239	34027	1.98%	0.309%
22	13.149	1903	1909	1911	rBV5	18450	31917	1.86%	0.289%
23	13.179	1911	1914	1920	rVV3	38267	61810	3.60%	0.561%
24	13.308	1932	1936	1941	rBV5	18399	33024	1.92%	0.299%
25	13.461	1954	1962	1965	rBV7	28038	60686	3.53%	0.550%
26	13.502	1966	1969	1973	rVV6	20610	34166	1.99%	0.310%
27	13.573	1973	1981	1989	rVV	1039744	1718303	100.00%	15.582%
28	13.644	1989	1993	1997	rVB4	17011	22774	1.33%	0.207%
29	13.896	2031	2036	2040	rBV5	35031	63081	3.67%	0.572%
30	13.932	2040	2042	2047	rVB4	17248	22166	1.29%	0.201%
31	13.996	2047	2053	2057	rBV8	17202	31780	1.85%	0.288%
32	14.102	2064	2071	2076	rVB4	34738	65458	3.81%	0.594%
33	14.155	2078	2080	2085	rVB3	15845	17810	1.04%	0.162%
34	14.285	2097	2102	2107	rBV6	13774	22314	1.30%	0.202%
35	14.338	2107	2111	2115	rBV5	15950	23349	1.36%	0.212%
36	14.402	2116	2122	2129	rVB4	57213	104636	6.09%	0.949%

Data Path : Z:\voasrv\HPCHEM1\MSVOA_D\Data\VD031721\
 Data File : VD068642.D
 Acq On : 17 Mar 2021 17:17
 Operator : VA/SY
 Sample : M1707-01
 Misc : 5.02G/5.00ml/MSVOA_D/SOIL
 ALS Vial : 11 Sample Multiplier: 1

Instrument :
 MSVOA_D
 ClientSampleId :
 ELEVATOR-510-EL-167-157

Integration Parameters: RTEINT.P
 Integrator: RTE
 Smoothing : ON Filtering: 5
 Sampling : 1 Min Area: 3 % of largest Peak
 Start Thrs: 0.2 Max Peaks: 100
 Stop Thrs : 0 Peak Location: TOP

If leading or trailing edge < 100 prefer < Baseline drop else tangent >
 Peak separation: 5

Method : Z:\voasrv\HPCHEM1\MSVOA_D\Method\82D022621S.M
 Title : SW846 8260

37	14.567	2143	2150	2154	rBV10	24108	49939	2.91%	0.453%
38	14.620	2154	2159	2166	rVB8	21742	40402	2.35%	0.366%
39	14.761	2178	2183	2188	rBV7	26641	47739	2.78%	0.433%
40	14.820	2188	2193	2197	rBV4	37679	66940	3.90%	0.607%
41	14.873	2197	2202	2207	rVB4	46937	89901	5.23%	0.815%
42	14.943	2210	2214	2219	rBV6	17758	31911	1.86%	0.289%
43	15.002	2219	2224	2226	rBV5	21312	37899	2.21%	0.344%
44	15.085	2234	2238	2243	rVB8	20248	36227	2.11%	0.329%
45	15.155	2245	2250	2252	rBV6	15322	24296	1.41%	0.220%
46	15.291	2268	2273	2280	rVB7	32780	70145	4.08%	0.636%
47	15.361	2280	2285	2292	rBV3	59690	110689	6.44%	1.004%
48	15.432	2292	2297	2303	rBV8	28166	72696	4.23%	0.659%
49	15.914	2375	2379	2383	rBV7	12883	20777	1.21%	0.188%
50	16.149	2414	2419	2424	rVB8	14926	33666	1.96%	0.305%
51	16.220	2426	2431	2438	rVB2	23385	45405	2.64%	0.412%
52	16.343	2447	2452	2459	rVB10	19065	40625	2.36%	0.368%

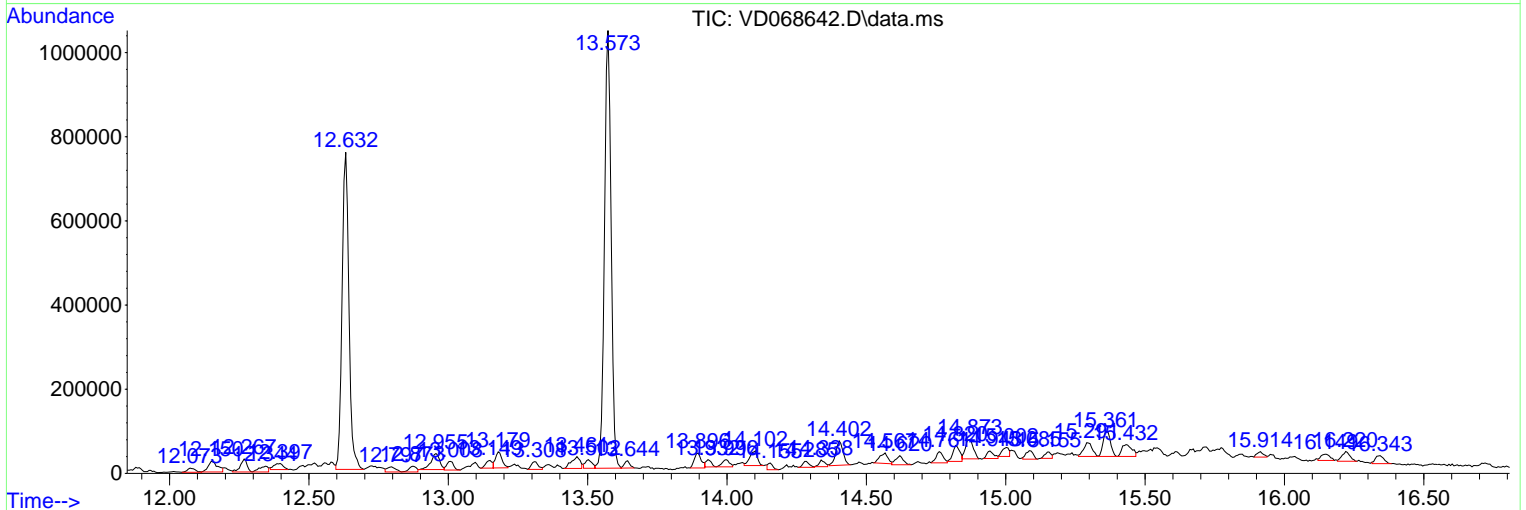
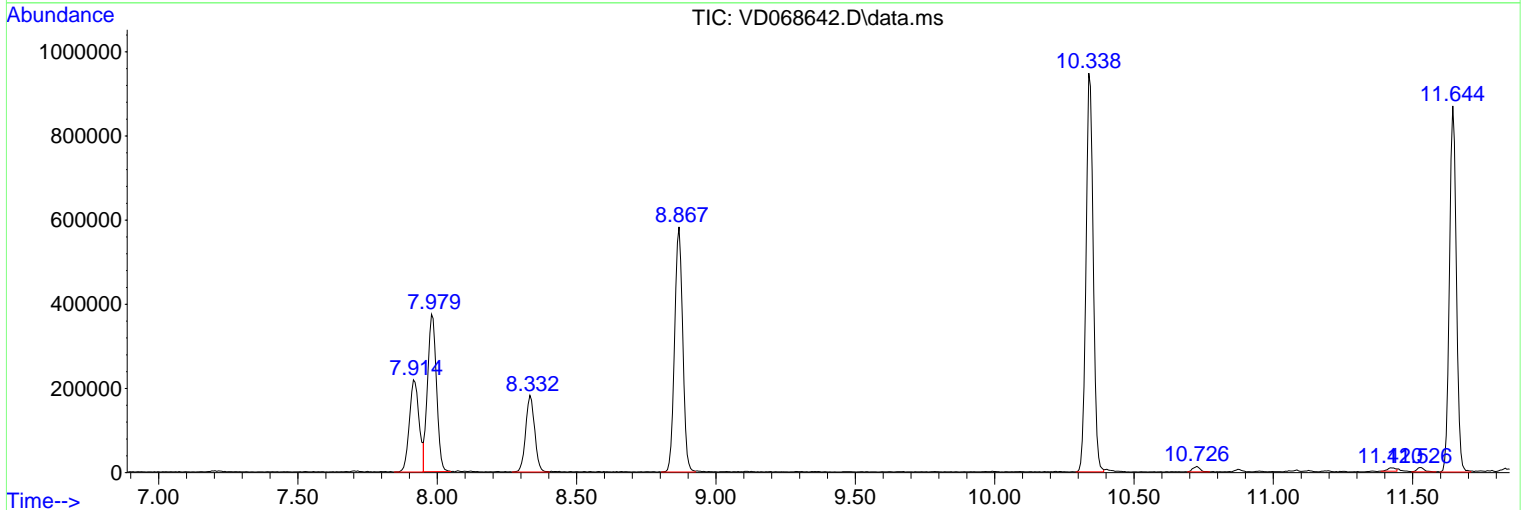
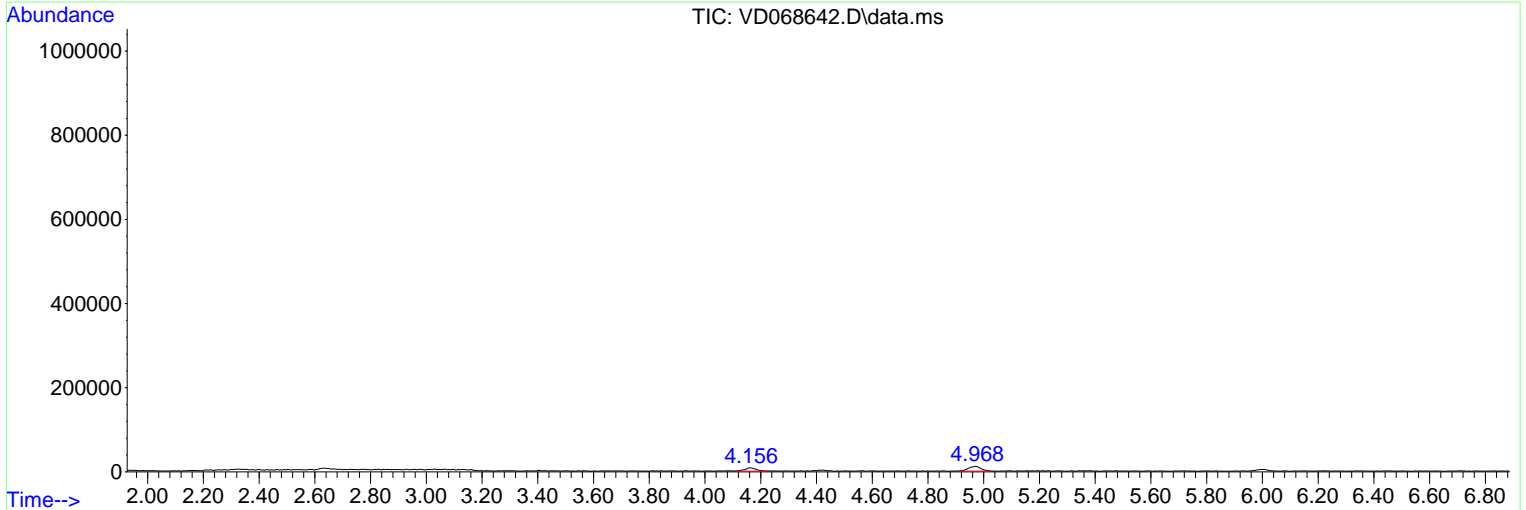
Sum of corrected areas: 11027379

Data Path : Z:\voasrv\HPCHEM1\MSVOA_D\Data\VD031721\
 Data File : VD068642.D
 Acq On : 17 Mar 2021 17:17
 Operator : VA/SY
 Sample : M1707-01
 Misc : 5.02G/5.00ml/MSVOA_D/SOIL
 ALS Vial : 11 Sample Multiplier: 1

Instrument :
 MSVOA_D
ClientSampleId :
 ELEVATOR-510-EL-167-157

Quant Method : Z:\voasrv\HPCHEM1\MSVOA_D\Method\82D022621S.M
 Quant Title : SW846 8260

TIC Library : C:\Database\NIST11.L
 TIC Integration Parameters: LSCINT.P



Library Search Compound Report

Data Path : Z:\voasrv\HPCHEM1\MSVOA_D\Data\VD031721\
Data File : VD068642.D
Acq On : 17 Mar 2021 17:17
Operator : VA/SY
Sample : M1707-01
Misc : 5.02G/5.00ml/MSVOA_D/SOIL
ALS Vial : 11 Sample Multiplier: 1

Instrument :
MSVOA_D
ClientSampleId :
ELEVATOR-510-EL-167-157

Quant Method : Z:\voasrv\HPCHEM1\MSVOA_D\Method\82D022621S.M
Quant Title : SW846 8260

TIC Library : C:\Database\NIST11.L
TIC Integration Parameters: LSCINT.P

No Library Search Compounds Detected

Data Path : Z:\voasrv\HPCHEM1\MSVOA_D\Data\VD031721\
Data File : VD068642.D
Acq On : 17 Mar 2021 17:17
Operator : VA/SY
Sample : M1707-01
Misc : 5.02G/5.00ml/MSVOA_D/SOIL
ALS Vial : 11 Sample Multiplier: 1

Instrument :
MSVOA_D
ClientSampleId :
ELEVATOR-510-EL-167-157

Quant Method : Z:\voasrv\HPCHEM1\MSVOA_D\Method\82D022621S.M
Quant Title : SW846 8260

TIC Library : C:\Database\NIST11.L
TIC Integration Parameters: LSCINT.P

TIC Top Hit name	RT	EstConc	Units	Response	--Internal Standard--			
					#	RT	Resp	Conc
