

Data Path : Z:\VOASRV\HPCHEM1\MSVOA D\DATA\VD031819\  
 Data File : VD061167.D  
 Acq On : 19 Mar 2019 3:10  
 Operator : VA/AP  
 Sample : K1930-14  
 Misc : 5.46µ/5ml/MSVOA D/SOIL  
 ALS Vial : 37 Sample Multiplier: 1

Instrument :  
 MSVOA\_D  
 ClientSampleId :  
 TP-6

Quant Time: Mar 19 04:59:30 2019  
 Quant Method : Z:\VOASRV\HPCHEM1\MSVOA\_D\METHOD\82D030719S.M  
 Quant Title : SW846 8260  
 QLast Update : Fri Mar 08 02:35:39 2019  
 Response via : Initial Calibration

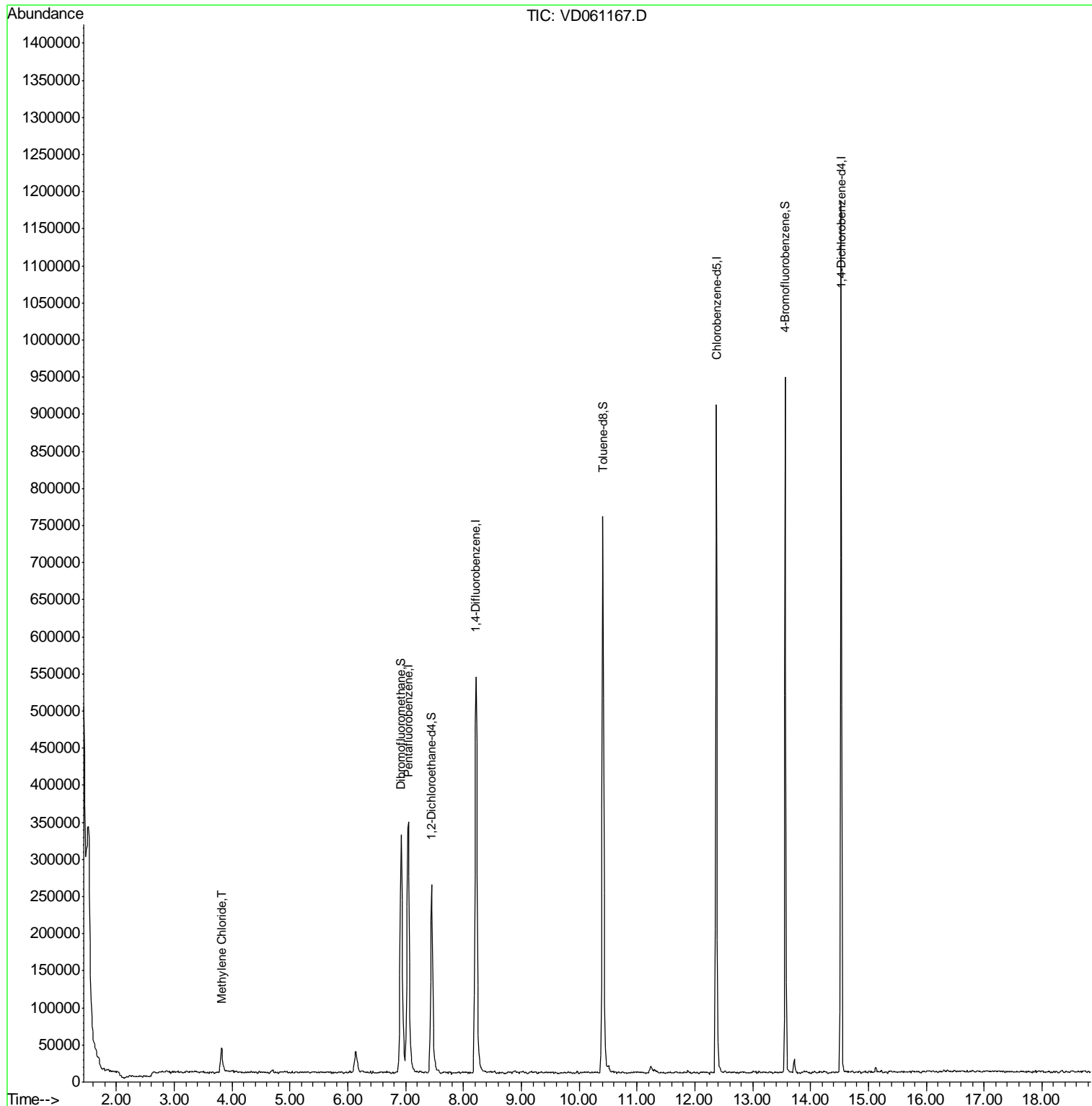
Internal Standards	R.T.	QIon	Response	Conc	Units	Dev(Min)
1) Pentafluorobenzene	7.05	168	353009	50.00	µg/l	0.00
34) 1,4-Difluorobenzene	8.22	114	682765	50.00	µg/l	0.00
63) Chlorobenzene-d5	12.37	117	599601	50.00	µg/l	0.01
72) 1,4-Dichlorobenzene-d4	14.53	152	268871	50.00	µg/l	0.01
System Monitoring Compounds						
33) 1,2-Dichloroethane-d4	7.45	65	245050	83.40	µg/l	0.00
Spiked Amount	50.000		Recovery	=	166.80%	
35) Dibromofluoromethane	6.93	113	318817	62.92	µg/l	0.00
Spiked Amount	50.000		Recovery	=	125.84%	
50) Toluene-d8	10.41	98	647735	50.91	µg/l	0.01
Spiked Amount	50.000		Recovery	=	101.82%	
62) 4-Bromofluorobenzene	13.56	95	295416	59.83	µg/l	0.01
Spiked Amount	50.000		Recovery	=	119.66%	
Target Compounds						Qvalue
20) Methylene Chloride	3.82	84	26243	2.411	µg/l	89

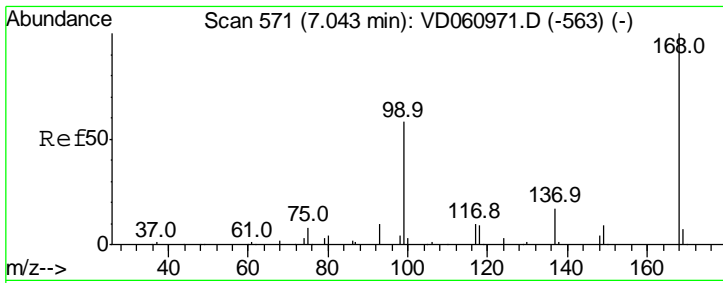
(#) = qualifier out of range (m) = manual integration (+) = signals summed

Data Path : Z:\VOASRV\HPCHEM1\MSVOA D\DATA\VD031819\  
Data File : VD061167.D  
Acq On : 19 Mar 2019 3:10  
Operator : VA/AP  
Sample : K1930-14  
Misc : 5.46g/5ml/MSVOA D/SOIL  
ALS Vial : 37 Sample Multiplier: 1

Instrument :  
MSVOA\_D  
Client Sampled :  
TP-6

Quant Time: Mar 19 04:59:30 2019  
Quant Method : Z:\VOASRV\HPCHEM1\MSVOA\_D\METHOD\82D030719S.M  
Quant Title : SW846 8260  
QLast Update : Fri Mar 08 02:35:39 2019  
Response via : Initial Calibration

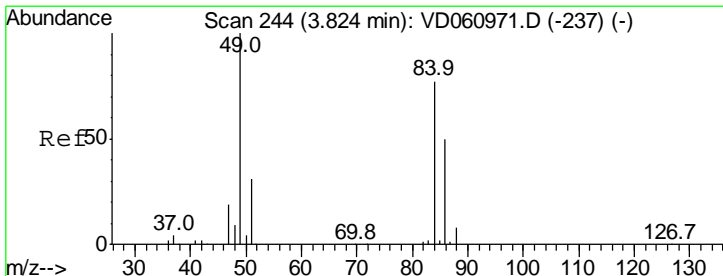
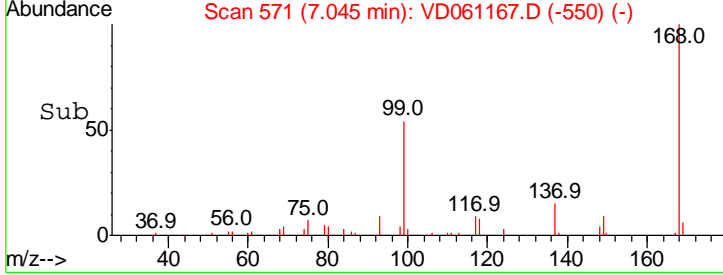
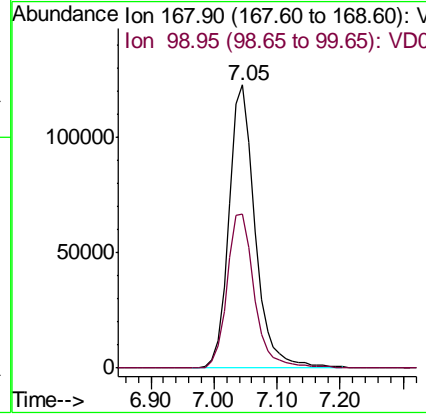
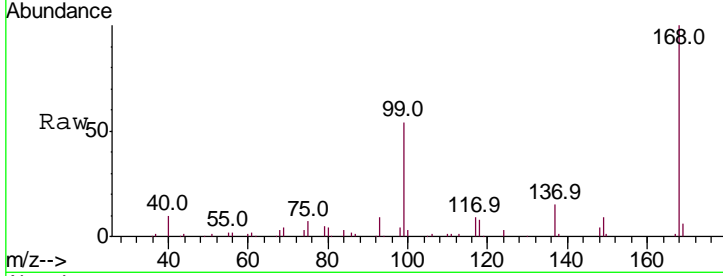




#1  
 Pentafluorobenzene  
 Concen: 50.000 ug/l  
 RT: 7.05 min Scan# 571  
 Delta R.T. 0.00 min  
 Lab File: VD061167.D  
 Acq: 19 Mar 2019 3:10

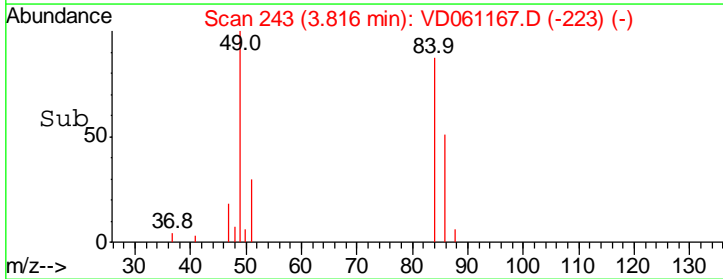
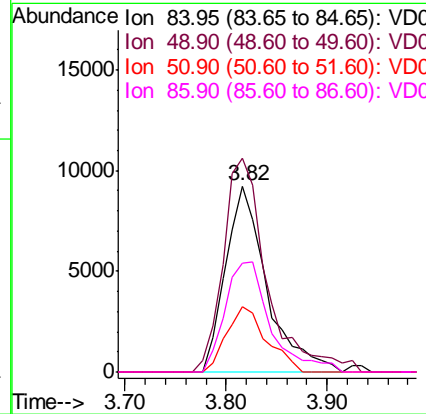
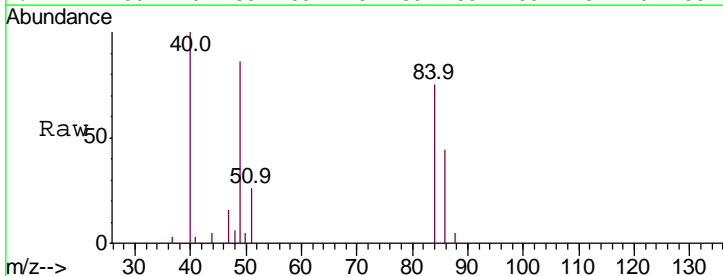
Instrument :  
 MSVOA\_D  
 ClientSampleID :  
 TP-6

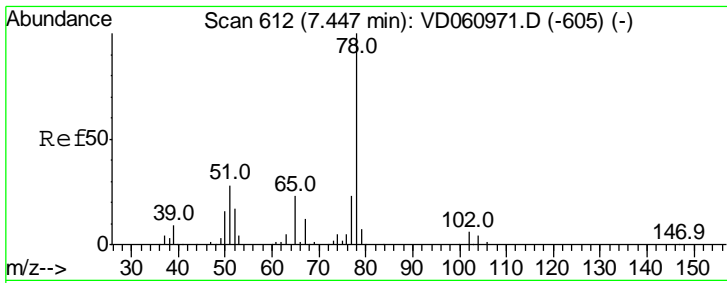
Tgt Ion: 168 Resp: 353009  
 Ion Ratio Lower Upper  
 168 100  
 99 54.4 47.3 70.9



#20  
 Methylene Chloride  
 Concen: 2.411 ug/l  
 RT: 3.82 min Scan# 243  
 Delta R.T. -0.01 min  
 Lab File: VD061167.D  
 Acq: 19 Mar 2019 3:10

Tgt Ion: 84 Resp: 26243  
 Ion Ratio Lower Upper  
 84 100  
 49 114.9 104.2 156.2  
 51 35.0 32.3 48.5  
 86 58.2 52.3 78.5

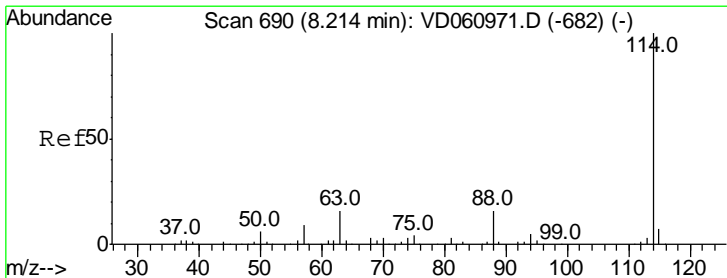
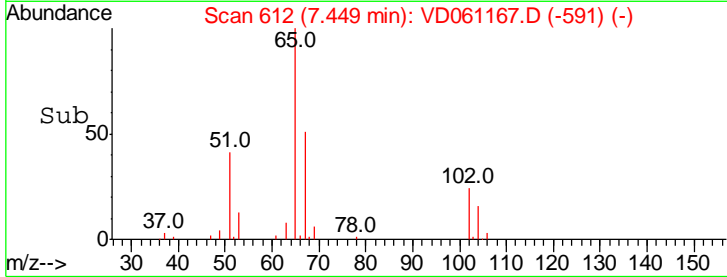
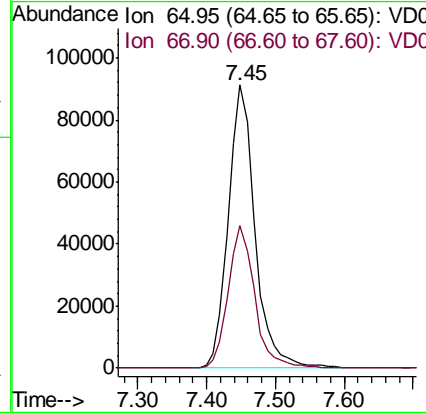
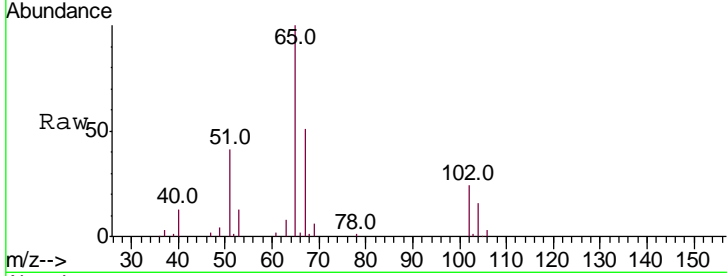




#33  
 1,2-Dichloroethane-d4  
 Concen: N.D. ug/l  
 RT: 7.45 min Scan# 612  
 Delta R.T. 0.00 min  
 Lab File: VD061167.D  
 Acq: 19 Mar 2019 3:10

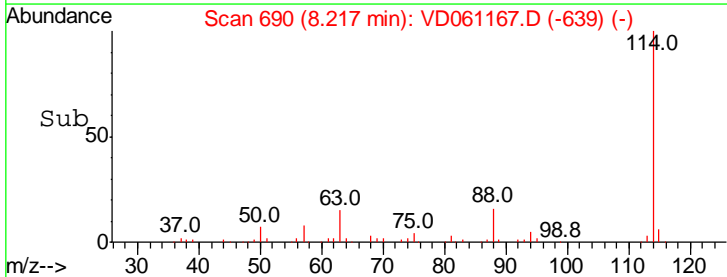
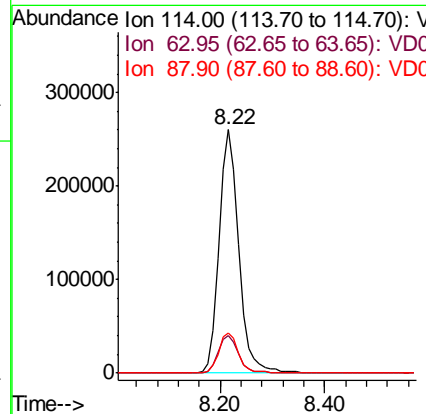
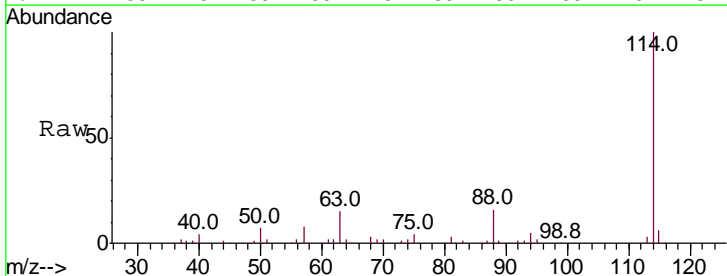
Instrument :  
 MSVOA\_D  
 ClientSampleID :  
 TP-6

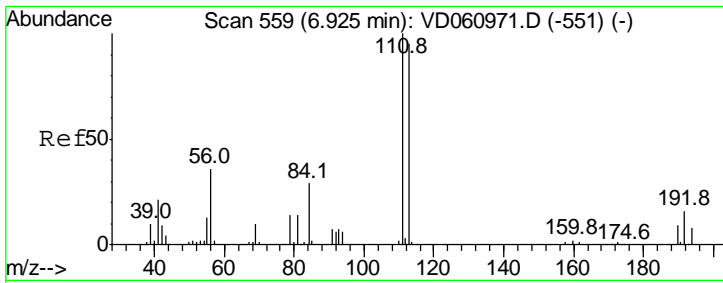
Tgt Ion	Resp	Lower	Upper
65	100		
67	50.6	0.0	105.2



#34  
 1,4-Difluorobenzene  
 Concen: 50.000 ug/l  
 RT: 8.22 min Scan# 690  
 Delta R.T. 0.00 min  
 Lab File: VD061167.D  
 Acq: 19 Mar 2019 3:10

Tgt Ion	Resp	Lower	Upper
114	100		
63	15.4	0.0	31.4
88	16.2	0.0	33.0

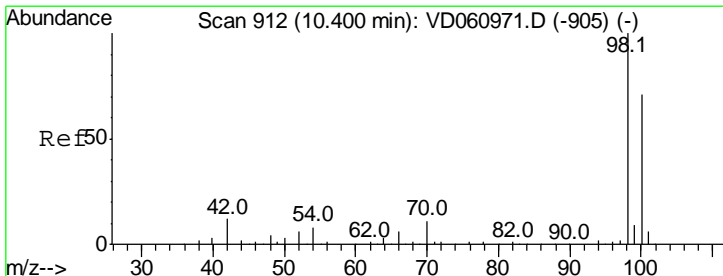
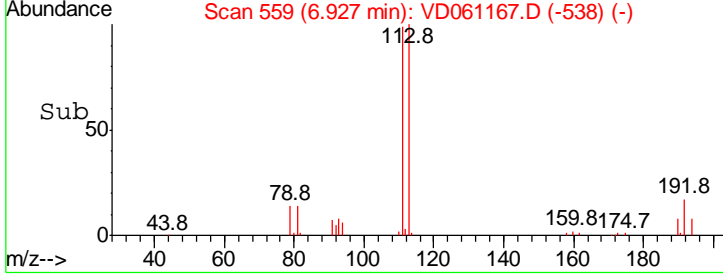
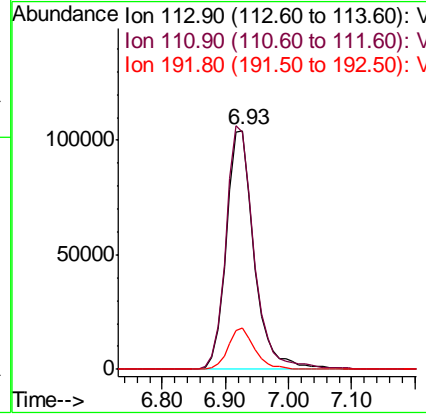
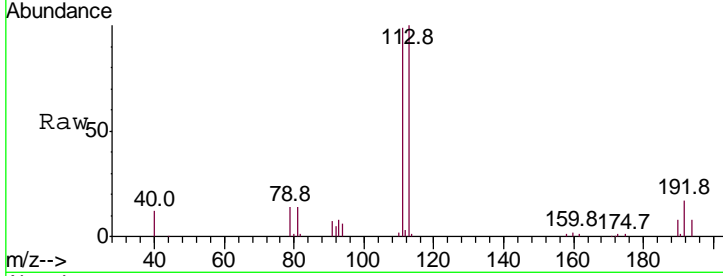




#35  
 Dibromofluoromethane  
 Concen: 50.000 ug/l  
 RT: 6.93 min Scan# 559  
 Delta R.T. 0.00 min  
 Lab File: VD061167.D  
 Acq: 19 Mar 2019 3:10

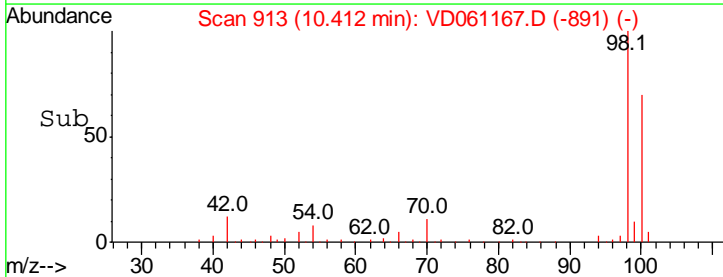
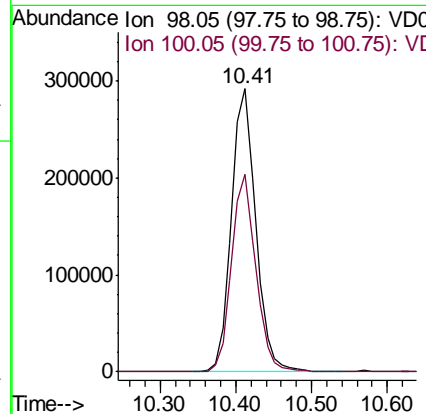
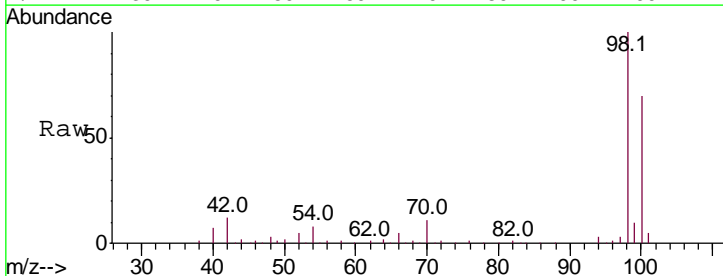
Instrument : MSVOA\_D  
 ClientSampled : TP-6

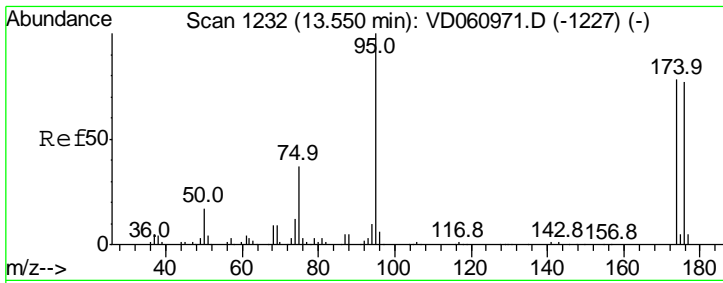
Tgt Ion	Resp	Lower	Upper
113	100		
111	99.5	84.2	126.4
192	17.2	13.1	19.7



#50  
 Toluene-d8  
 Concen: N.D. ug/l  
 RT: 10.41 min Scan# 913  
 Delta R.T. 0.01 min  
 Lab File: VD061167.D  
 Acq: 19 Mar 2019 3:10

Tgt Ion	Resp	Lower	Upper
98	100		
100	70.0	57.4	86.2

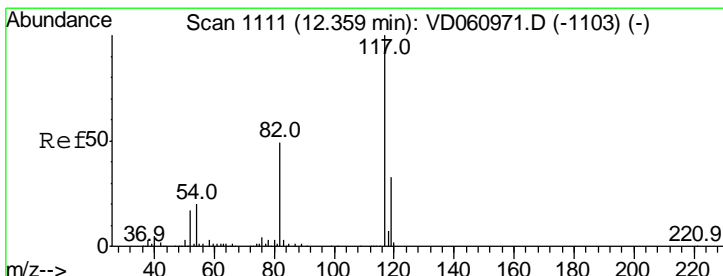
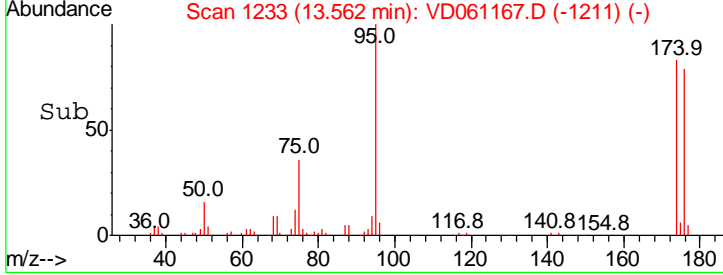
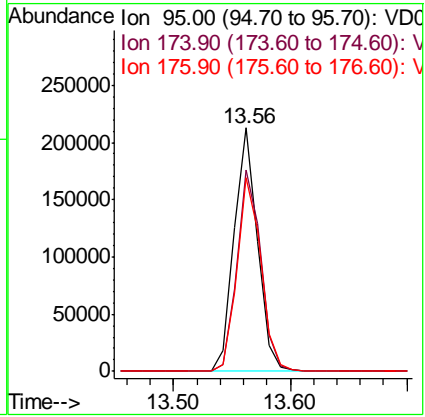
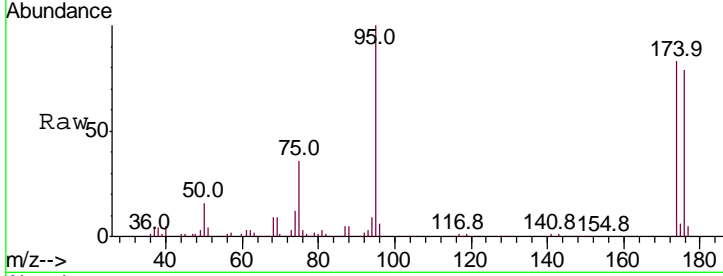




#62  
 4-Bromofluorobenzene  
 Concen: N.D. ug/l  
 RT: 13.56 min Scan# 1233  
 Delta R.T. 0.01 min  
 Lab File: VD061167.D  
 Acq: 19 Mar 2019 3:10

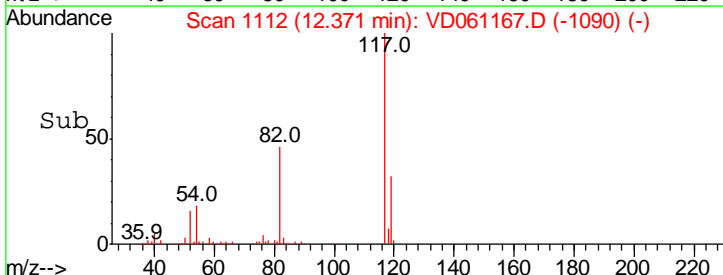
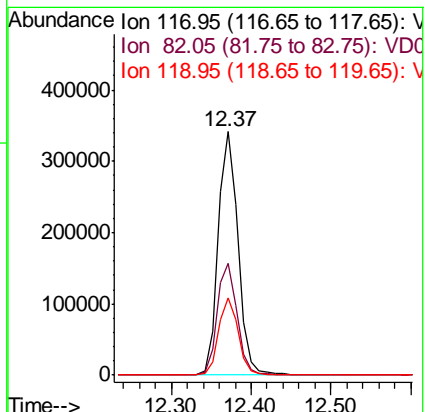
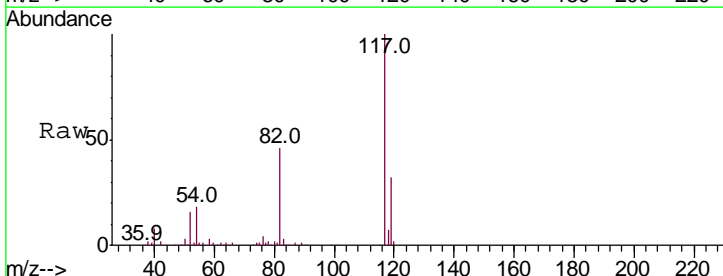
Instrument :  
 MSVOA\_D  
 ClientSampled :  
 TP-6

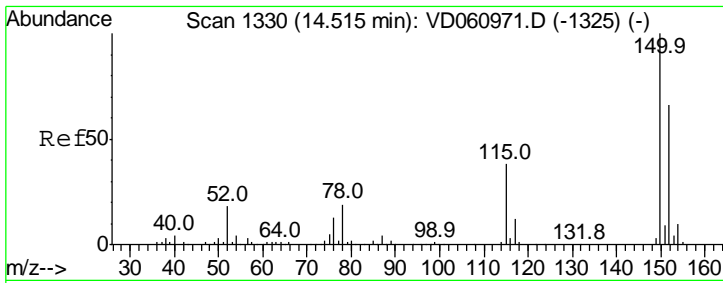
Tgt Ion	Resp	Lower	Upper
95	100		
174	82.9	0.0	155.6
176	79.4	0.0	153.8



#63  
 Chlorobenzene-d5  
 Concen: 50.000 ug/l  
 RT: 12.37 min Scan# 1112  
 Delta R.T. 0.01 min  
 Lab File: VD061167.D  
 Acq: 19 Mar 2019 3:10

Tgt Ion	Resp	Lower	Upper
117	100		
82	45.9	38.9	58.3
119	31.8	26.6	39.8





#72  
 1,4-Dichlorobenzene-d4  
 Concen: 50.000 ug/l  
 RT: 14.53 min Scan# 1331  
 Delta R.T. 0.01 min  
 Lab File: VD061167.D  
 Acq: 19 Mar 2019 3:10

Instrument : MSVOA\_D  
 ClientSampled : TP-6

Tot Ion:152 Resp: 268871

Ion	Ratio	Lower	Upper
152	100		
115	55.0	28.6	85.9
150	157.0	0.0	310.6

