

Data Path : Z:\VOASRV\HPCHEM1\MSVOA D\DATA\VD031919\
 Data File : VD061188.D
 Acq On : 19 Mar 2019 16:39
 Operator : VA/AP
 Sample : K1935-01
 Misc : 3.09g/5ml/MSVOA D/SOIL
 ALS Vial : 14 Sample Multiplier: 1

Instrument :
 MSVOA_D
 ClientSampleId :
 SB-17(0.5-1.5)

Integration Parameters: RTEINT.P

Integrator: RTE
 Smoothing : ON Filtering: 5
 Sampling : 1 Min Area: 3 % of largest Peak
 Start Thrs: 0.2 Max Peaks: 100
 Stop Thrs : 0 Peak Location: TOP

If leading or trailing edge < 100 prefer < Baseline drop else tangent >
 Peak separation: 5

Method : Z:\VOASRV\HPCHEM1\MSVOA_D\METHOD\82D030719S.M
 Title : SW846 8260

Signal : TIC

peak #	R.T. min	first scan	max scan	last scan	PK TY	peak height	corr. area	corr. % max.	% of total
1	1.706	26	29	36	rVB	66008	121355	5.46%	1.112%
2	3.813	235	243	251	rBV2	42900	131902	5.93%	1.208%
3	6.914	551	558	565	rBV	449933	1297655	58.37%	11.885%
4	7.042	565	571	587	rVB	495518	1462055	65.76%	13.391%
5	7.446	606	612	624	rBV	271449	758770	34.13%	6.950%
6	8.204	684	689	704	rBV	763628	1941571	87.33%	17.783%
7	9.720	836	843	849	rBV3	11982	35472	1.60%	0.325%
8	10.399	903	912	923	rBV	901712	2223341	100.00%	20.364%
9	11.236	992	997	1003	rBV3	15228	46815	2.11%	0.429%
10	12.358	1107	1111	1119	rBV	980725	1619226	72.83%	14.831%
11	13.549	1228	1232	1240	rVB	531638	742008	33.37%	6.796%
12	13.707	1244	1248	1252	rBV2	15530	26266	1.18%	0.241%
13	14.514	1326	1330	1335	rBV	346365	511689	23.01%	4.687%

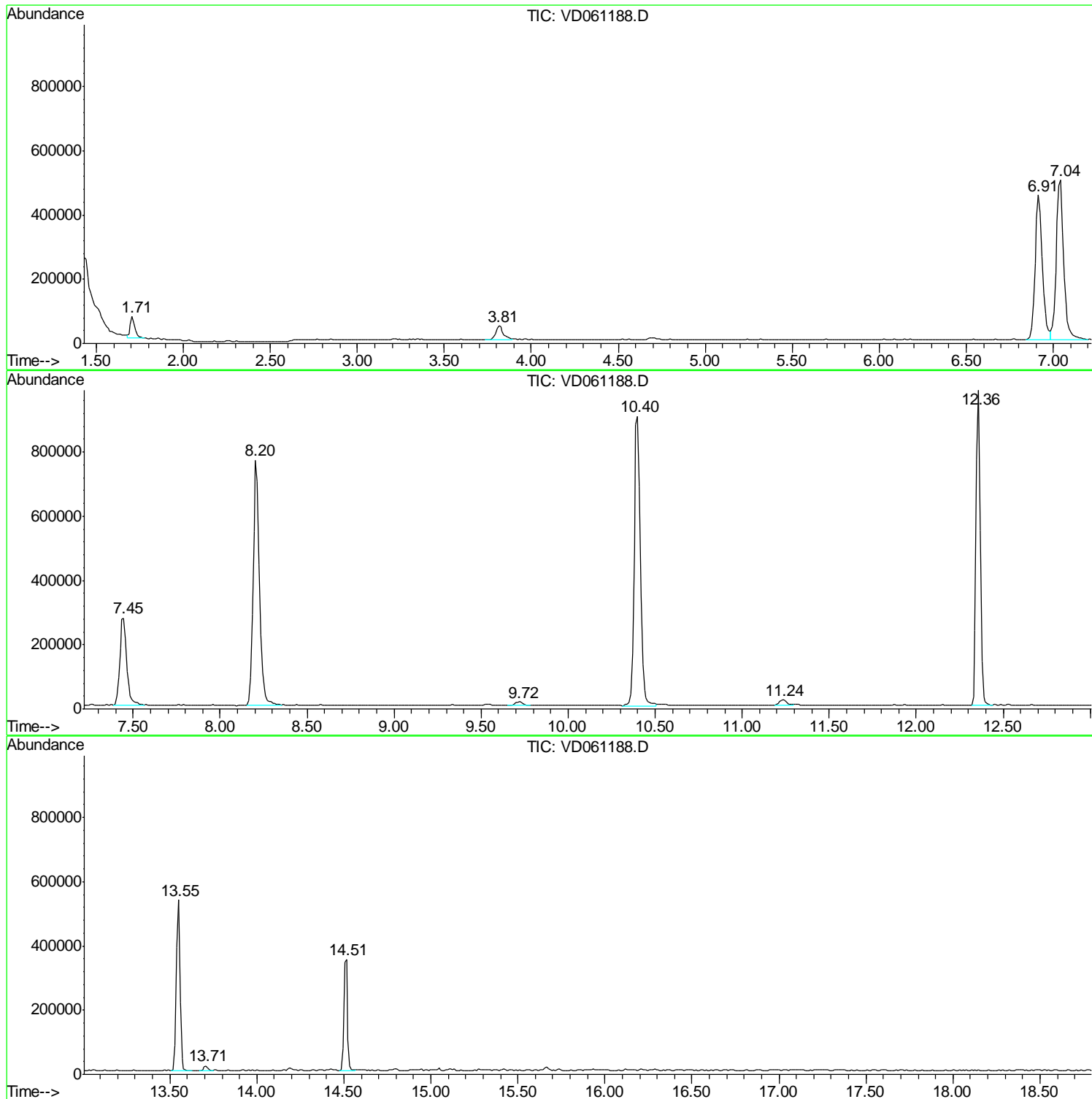
Sum of corrected areas: 10918125

Data Path : Z:\VOASRV\HPCHEM1\MSVOA D\DATA\VD031919\
Data File : VD061188.D
Acq On : 19 Mar 2019 16:39
Operator : VA/AP
Sample : K1935-01
Misc : 3.09µ/5ml/MSVOA D/SOIL
ALS Vial : 14 Sample Multiplier: 1

Instrument :
MSVOA_D
ClientSampleID :
SB-17(0.5-1.5)

Quant Method : Z:\VOASRV\HPCHEM1\MSVOA_D\METHOD\82D030719S.M
Quant Title : SW846 8260

TIC Library : C:\DATABASE\NIST11.L
TIC Integration Parameters: LSCINT.P



Data Path : Z:\VOASRV\HPCHEM1\MSVOA_D\DATA\VD031919\
Data File : VD061188.D
Acq On : 19 Mar 2019 16:39
Operator : VA/AP
Sample : K1935-01
Misc : 3.09g/5ml/MSVOA_D/SOIL
ALS Vial : 14 Sample Multiplier: 1

Instrument :
MSVOA_D
ClientSampleId :
SB-17(0.5-1.5)

Quant Method : Z:\VOASRV\HPCHEM1\MSVOA_D\METHOD\82D030719S.M
Quant Title : SW846 8260

TIC Library : C:\DATABASE\NIST11.L
TIC Integration Parameters: LSCINT.P

No Library Search Compounds Detected

Data Path : Z:\VOASRV\HPCHEM1\MSVOA_D\DATA\VD031919\
Data File : VD061188.D
Acq On : 19 Mar 2019 16:39
Operator : VA/AP
Sample : K1935-01
Misc : 3.09g/5ml/MSVOA_D/SOIL
ALS Vial : 14 Sample Multiplier: 1

Instrument :
MSVOA_D
ClientSampleId :
SB-17(0.5-1.5)

Quant Method : Z:\VOASRV\HPCHEM1\MSVOA_D\METHOD\82D030719S.M
Quant Title : SW846 8260

TIC Library : C:\DATABASE\NIST11.L
TIC Integration Parameters: LSCINT.P

TIC Top Hit name	RT	EstConc	Units	Response	--Internal Standard--			
					#	RT	Resp	Conc
