

Data Path : Z:\voasrv\HPCHEM1\MSVOA\_D\Data\VD032122\  
 Data File : VD072338.D  
 Acq On : 21 Mar 2022 14:13  
 Operator : VA/SY  
 Sample : N1949-06  
 Misc : 3.11G/5.00ml/MSVOA\_D/SOIL  
 ALS Vial : 11 Sample Multiplier: 1

Instrument :  
 MSVOA\_D  
 ClientSampleId :  
 CP-BH1-031422-5-6-DUP

Integration Parameters: RTEINT.P

Integrator: RTE  
 Smoothing : ON  
 Sampling : 1  
 Start Thrs : 0.2  
 Stop Thrs : 0

Filtering: 5  
 Min Area: 3 % of largest Peak  
 Max Peaks: 100  
 Peak Location: TOP

If leading or trailing edge < 100 prefer < Baseline drop else tangent >  
 Peak separation: 5

Method : Z:\voasrv\HPCHEM1\MSVOA\_D\Method\82D031122S.M  
 Title : SW846 8260

Signal : TIC: VD072338.D\data.ms

peak #	R.T. min	first scan	max scan	last scan	PK TY	peak height	corr. area	corr. % max.	% of total
1	2.068	22	25	27	rBV2	1403	2025	2.22%	0.308%
2	2.121	30	34	35	rBV2	1545	2156	2.36%	0.328%
3	2.203	47	48	51	rVB3	1891	1626	1.78%	0.247%
4	2.373	74	77	79	rBV	1426	1433	1.57%	0.218%
5	2.491	96	97	100	rBV2	2095	1330	1.46%	0.202%
6	2.526	100	103	106	rBV3	1414	1603	1.76%	0.244%
7	2.638	120	122	124	rBV3	1615	1825	2.00%	0.277%
8	2.726	135	137	140	rVB2	1348	1168	1.28%	0.178%
9	2.791	146	148	151	rVB3	2128	1712	1.88%	0.260%
10	2.891	163	165	167	rBV	1455	1423	1.56%	0.216%
11	3.091	196	199	201	rBV2	1504	2083	2.28%	0.317%
12	3.191	214	216	219	rVB2	1637	1693	1.86%	0.257%
13	3.332	238	240	243	rVB2	1042	1184	1.30%	0.180%
14	3.421	253	255	257	rBV2	1306	1154	1.27%	0.175%
15	3.456	259	261	264	rVV2	1155	1258	1.38%	0.191%
16	3.509	267	270	271	rVB2	1375	1209	1.33%	0.184%
17	3.532	271	274	277	rBV	1644	2202	2.42%	0.335%
18	3.962	344	347	351	rBV2	1757	2414	2.65%	0.367%
19	4.015	351	356	359	rVV3	1516	2403	2.64%	0.365%
20	4.068	361	365	367	rBV	1180	1901	2.09%	0.289%
21	4.497	435	438	441	rVB2	1523	1717	1.88%	0.261%
22	4.532	441	444	445	rBV2	1146	1175	1.29%	0.179%
23	4.715	473	475	479	rBV2	1326	1600	1.75%	0.243%
24	4.885	503	504	508	rBV	1822	1895	2.08%	0.288%
25	4.950	512	515	518	rVV3	1562	2316	2.54%	0.352%
26	4.973	518	519	525	rVB3	1903	1945	2.13%	0.296%
27	5.073	533	536	541	rBV2	1010	1716	1.88%	0.261%
28	5.215	558	560	562	rVB2	1379	1209	1.33%	0.184%
29	5.244	562	565	568	rBV	1543	2364	2.59%	0.359%
30	5.667	634	637	640	rBV2	832	1373	1.51%	0.209%
31	6.003	693	694	696	rVB2	1985	1283	1.41%	0.195%
32	6.385	757	759	765	rVB2	1633	2703	2.96%	0.411%
33	6.579	790	792	794	rVB	1353	1208	1.32%	0.184%
34	6.597	794	795	798	rBV2	1185	1221	1.34%	0.186%
35	6.644	800	803	808	rVB2	1482	2362	2.59%	0.359%
36	7.032	867	869	875	rVB	1394	1890	2.07%	0.287%

Data Path : Z:\voasrv\HPCHEM1\MSVOA\_D\Data\VD032122\  
 Data File : VD072338.D  
 Acq On : 21 Mar 2022 14:13  
 Operator : VA/SY  
 Sample : N1949-06  
 Misc : 3.11G/5.00ml/MSVOA\_D/SOIL  
 ALS Vial : 11 Sample Multiplier: 1

Instrument :  
 MSVOA\_D  
 ClientSampleId :  
 CP-BH1-031422-5-6-DUP

Integration Parameters: RTEINT.P

Integrator: RTE  
 Smoothing : ON  
 Sampling : 1  
 Start Thrs : 0.2  
 Stop Thrs : 0

Filtering: 5  
 Min Area: 3 % of largest Peak  
 Max Peaks: 100  
 Peak Location: TOP

If leading or trailing edge < 100 prefer < Baseline drop else tangent >  
 Peak separation: 5

Method : Z:\voasrv\HPCHEM1\MSVOA\_D\Method\82D031122S.M  
 Title : SW846 8260

37	7.238	901	904	906	rBV	1798	1807	1.98%	0.275%
38	7.309	913	916	921	rBV2	856	1568	1.72%	0.238%
39	7.397	930	931	935	rVB2	1827	1544	1.69%	0.235%
40	7.432	935	937	939	rBV2	1880	1625	1.78%	0.247%
41	7.520	947	952	954	rVB2	1051	1649	1.81%	0.251%
42	7.585	961	963	968	rBV2	938	1608	1.76%	0.244%
43	7.656	973	975	977	rBV2	1179	1393	1.53%	0.212%
44	7.838	1001	1006	1008	rVB2	809	1579	1.73%	0.240%
45	7.867	1008	1011	1012	rBV2	976	1168	1.28%	0.178%
46	7.914	1012	1019	1024	rVV2	16051	34828	38.20%	5.294%
47	7.973	1024	1029	1037	rVV2	21209	45803	50.24%	6.962%
48	8.061	1041	1044	1046	rBV2	1727	1961	2.15%	0.298%
49	8.191	1065	1066	1068	rBV	1437	1244	1.36%	0.189%
50	8.226	1070	1072	1075	rVB2	1409	1577	1.73%	0.240%
51	8.326	1080	1089	1097	rVB4	14390	34344	37.67%	5.220%
52	8.467	1109	1113	1115	rBV2	1026	1190	1.31%	0.181%
53	8.861	1173	1180	1190	rVB3	28654	59224	64.96%	9.002%
54	9.132	1223	1226	1230	rBV2	1546	2451	2.69%	0.373%
55	9.485	1283	1286	1290	rBV2	1127	1680	1.84%	0.255%
56	10.008	1372	1375	1380	rVB2	1946	3352	3.68%	0.510%
57	10.061	1380	1384	1387	rBV3	1262	1627	1.78%	0.247%
58	10.091	1387	1389	1392	rBV	1316	1657	1.82%	0.252%
59	10.332	1424	1430	1439	rBV	45015	81989	89.92%	12.462%
60	10.532	1460	1464	1466	rBV2	1428	1919	2.10%	0.292%
61	10.779	1504	1506	1509	rBV2	1224	1681	1.84%	0.256%
62	11.250	1583	1586	1587	rBV2	1381	1269	1.39%	0.193%
63	11.297	1590	1594	1595	rBV	1451	1379	1.51%	0.210%
64	11.408	1610	1613	1614	rBV	1058	1246	1.37%	0.189%
65	11.502	1626	1629	1632	rVB2	1588	2017	2.21%	0.307%
66	11.638	1646	1652	1659	rBV2	49784	90930	99.73%	13.821%
67	11.708	1663	1664	1668	rVB	1588	1693	1.86%	0.257%
68	11.802	1678	1680	1681	rVB	2024	1146	1.26%	0.174%
69	11.826	1681	1684	1685	rBV	1728	1523	1.67%	0.231%
70	11.844	1685	1687	1691	rVB2	1794	2097	2.30%	0.319%
71	12.161	1737	1741	1742	rBV2	1088	1303	1.43%	0.198%
72	12.279	1760	1761	1766	rVB2	1293	1219	1.34%	0.185%
73	12.326	1766	1769	1771	rBV2	1095	1150	1.26%	0.175%
74	12.502	1796	1799	1801	rVB3	1080	1311	1.44%	0.199%
75	12.532	1801	1804	1809	rVB2	1737	2906	3.19%	0.442%
76	12.620	1813	1819	1825	rVV	41306	66909	73.39%	10.170%

Data Path : Z:\voasrv\HPCHEM1\MSVOA\_D\Data\VD032122\  
 Data File : VD072338.D  
 Acq On : 21 Mar 2022 14:13  
 Operator : VA/SY  
 Sample : N1949-06  
 Misc : 3.11G/5.00ml/MSVOA\_D/SOIL  
 ALS Vial : 11 Sample Multiplier: 1

Instrument :  
 MSVOA\_D  
 ClientSampleId :  
 CP-BH1-031422-5-6-DUP

Integration Parameters: RTEINT.P

Integrator: RTE  
 Smoothing : ON Filtering: 5  
 Sampling : 1 Min Area: 3 % of largest Peak  
 Start Thrs: 0.2 Max Peaks: 100  
 Stop Thrs : 0 Peak Location: TOP

If leading or trailing edge < 100 prefer < Baseline drop else tangent >  
 Peak separation: 5

Method : Z:\voasrv\HPCHEM1\MSVOA\_D\Method\82D031122S.M  
 Title : SW846 8260

77	12.779	1844	1846	1850	rBV2	1558	2591	2.84%	0.394%
78	13.291	1929	1933	1935	rVV2	1336	1631	1.79%	0.248%
79	13.326	1935	1939	1942	rVB	2013	2905	3.19%	0.442%
80	13.561	1973	1979	1986	rBV2	56900	91175	100.00%	13.859%
81	13.773	2011	2015	2016	rVB2	1036	1296	1.42%	0.197%
82	13.802	2016	2020	2021	rBV2	2309	2044	2.24%	0.311%
83	14.085	2065	2068	2070	rBV	991	1293	1.42%	0.197%
84	14.132	2072	2076	2079	rBV3	1023	1755	1.92%	0.267%
85	14.202	2086	2088	2090	rBV2	1698	1332	1.46%	0.202%
86	14.238	2092	2094	2097	rVV2	1381	1580	1.73%	0.240%
87	14.320	2106	2108	2109	rBV2	1585	1285	1.41%	0.195%
88	14.443	2127	2129	2131	rBV	2089	1205	1.32%	0.183%
89	14.508	2138	2140	2142	rBV	1484	1612	1.77%	0.245%
90	14.832	2192	2195	2196	rBV	1987	1558	1.71%	0.237%
91	14.990	2220	2222	2226	rBV2	1393	1454	1.59%	0.221%
92	15.455	2299	2301	2302	rBV2	2223	1561	1.71%	0.237%
93	15.490	2305	2307	2308	rVV2	2207	1489	1.63%	0.226%
94	15.508	2308	2310	2313	rVV3	1255	1340	1.47%	0.204%
95	15.585	2321	2323	2326	rVB2	2068	1664	1.83%	0.253%
96	15.649	2332	2334	2335	rVB	2345	1363	1.49%	0.207%
97	15.720	2343	2346	2347	rBV2	1606	1313	1.44%	0.200%
98	15.796	2357	2359	2361	rBV2	1624	1369	1.50%	0.208%
99	16.426	2464	2466	2467	rBV2	1829	1311	1.44%	0.199%
100	16.755	2521	2522	2524	rBV	2369	1423	1.56%	0.216%

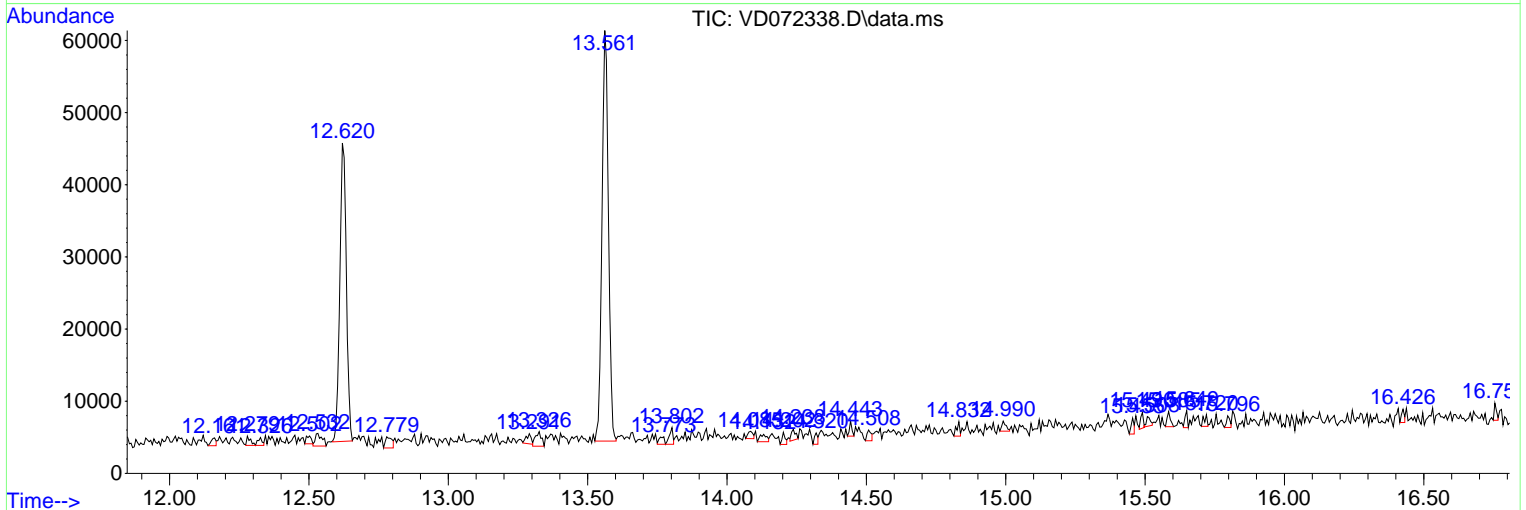
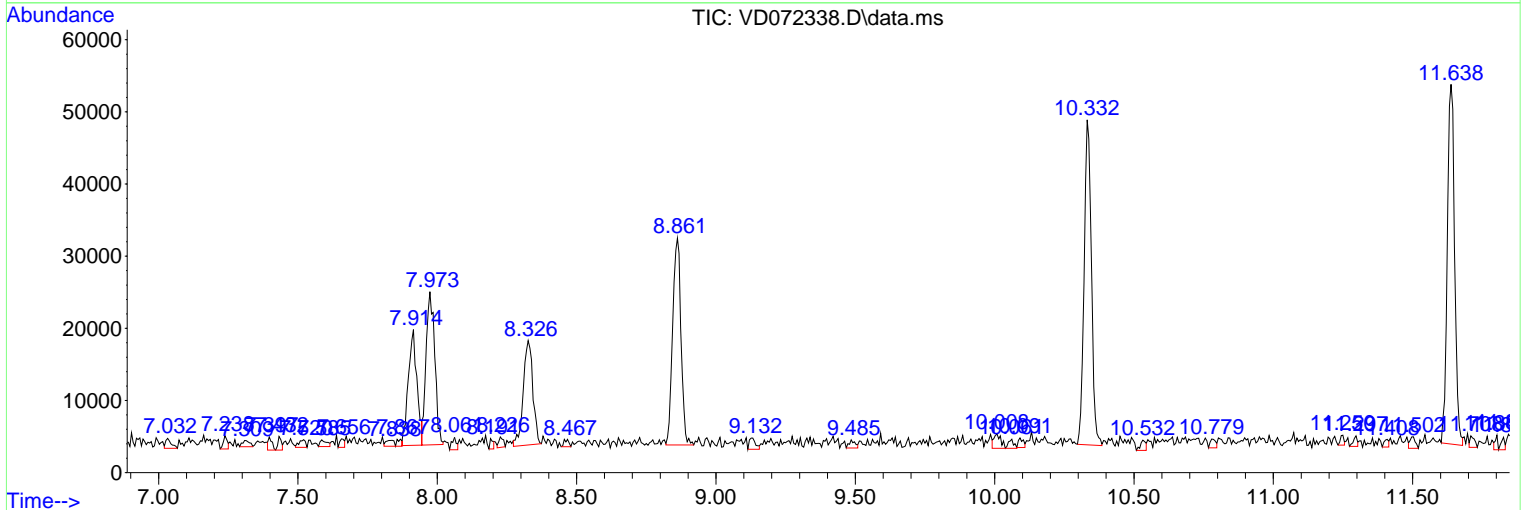
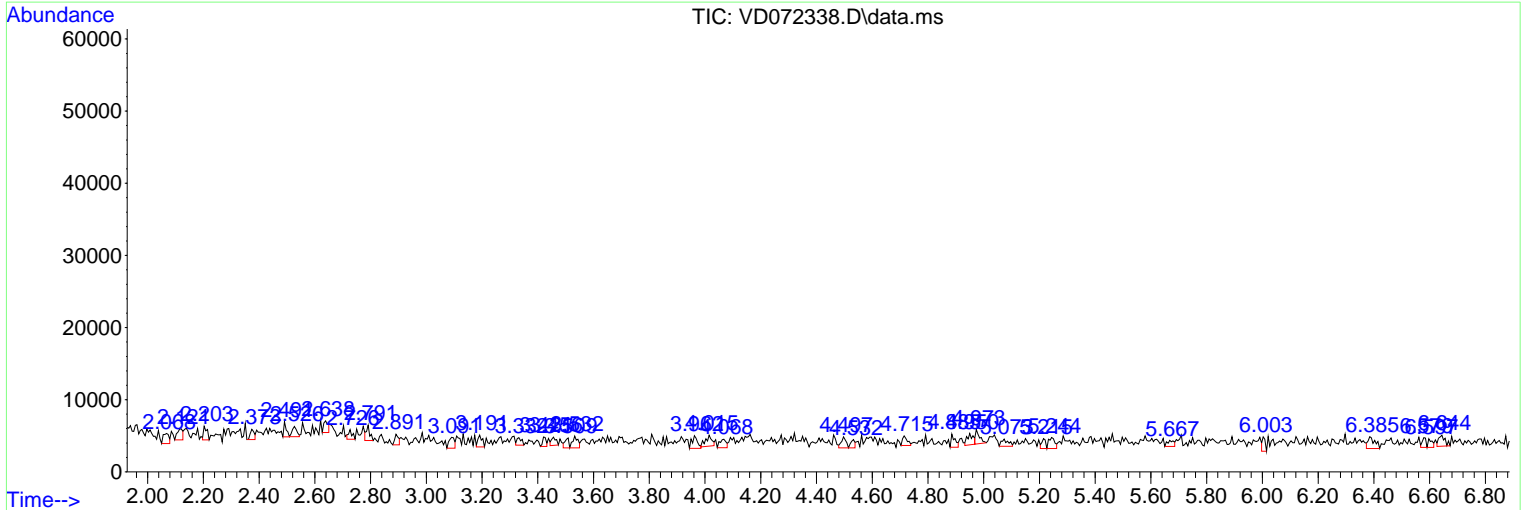
Sum of corrected areas: 657894

Data Path : Z:\voasrv\HPCHEM1\MSVOA\_D\Data\VD072338\  
Data File : VD072338.D  
Acq On : 21 Mar 2022 14:13  
Operator : VA/SY  
Sample : N1949-06  
Misc : 3.11G/5.00ml/MSVOA\_D/SOIL  
ALS Vial : 11 Sample Multiplier: 1

Instrument :  
MSVOA\_D  
ClientSampleId :  
CP-BH1-031422-5-6-DUP

Quant Method : Z:\voasrv\HPCHEM1\MSVOA\_D\Method\82D031122S.M  
Quant Title : SW846 8260

TIC Library : C:\Database\NIST20.L  
TIC Integration Parameters: LSCINT.P



Library Search Compound Report

Data Path : Z:\voasrv\HPCHEM1\MSVOA\_D\Data\VD032122\  
Data File : VD072338.D  
Acq On : 21 Mar 2022 14:13  
Operator : VA/SY  
Sample : N1949-06  
Misc : 3.11G/5.00ml/MSVOA\_D/SOIL  
ALS Vial : 11 Sample Multiplier: 1

Instrument :  
MSVOA\_D  
ClientSampleId :  
CP-BH1-031422-5-6-DUP

Quant Method : Z:\voasrv\HPCHEM1\MSVOA\_D\Method\82D031122S.M  
Quant Title : SW846 8260

TIC Library : C:\Database\NIST20.L  
TIC Integration Parameters: LSCINT.P

No Library Search Compounds Detected

\*\*\*\*\*

Data Path : Z:\voasrv\HPCHEM1\MSVOA\_D\Data\VD032122\  
Data File : VD072338.D  
Acq On : 21 Mar 2022 14:13  
Operator : VA/SY  
Sample : N1949-06  
Misc : 3.11G/5.00ml/MSVOA\_D/SOIL  
ALS Vial : 11 Sample Multiplier: 1

Instrument :  
MSVOA\_D  
ClientSampleId :  
CP-BH1-031422-5-6-DUP

Quant Method : Z:\voasrv\HPCHEM1\MSVOA\_D\Method\82D031122S.M  
Quant Title : SW846 8260

TIC Library : C:\Database\NIST20.L  
TIC Integration Parameters: LSCINT.P

TIC Top Hit name	RT	EstConc	Units	Response	--Internal Standard--			
					#	RT	Resp	Conc

---