

Data Path : Z:\voasrv\HPCHEM1\MSVOA_D\Data\VD032122\
 Data File : VD072351.D
 Acq On : 21 Mar 2022 20:23
 Operator : VA/SY
 Sample : N1968-10
 Misc : 5.02G/5.00ml/MSVOA_D/SOIL
 ALS Vial : 24 Sample Multiplier: 1

Instrument :
 MSVOA_D
 ClientSampleId :
 G-2-11-23-24

Integration Parameters: RTEINT.P

Integrator: RTE
 Smoothing : ON
 Sampling : 1
 Start Thrs : 0.2
 Stop Thrs : 0

Filtering: 5
 Min Area: 3 % of largest Peak
 Max Peaks: 100
 Peak Location: TOP

If leading or trailing edge < 100 prefer < Baseline drop else tangent >
 Peak separation: 5

Method : Z:\voasrv\HPCHEM1\MSVOA_D\Method\82D031122S.M
 Title : SW846 8260

Signal : TIC: VD072351.D\data.ms

peak #	R.T. min	first scan	max scan	last scan	PK TY	peak height	corr. area	corr. % max.	% of total
1	2.032	16	19	21	rBV	1214	1037	44.34%	0.812%
2	2.056	21	23	25	rBV2	1095	904	38.65%	0.708%
3	2.191	45	46	48	rBV	1605	1185	50.66%	0.928%
4	2.232	52	53	57	rBV2	1566	1877	80.25%	1.471%
5	2.320	65	68	69	rBV2	1796	1533	65.54%	1.201%
6	2.467	91	93	95	rBV	1309	1196	51.13%	0.937%
7	2.491	95	97	99	rVV	1230	1201	51.35%	0.941%
8	2.526	101	103	105	rBV2	1352	958	40.96%	0.751%
9	2.597	111	115	117	rBV2	1167	1477	63.15%	1.157%
10	2.620	117	119	122	rBV2	1033	1182	50.53%	0.926%
11	2.767	141	144	145	rBV	1693	1254	53.61%	0.983%
12	3.185	213	215	217	rVB	1578	1187	50.75%	0.930%
13	3.244	221	225	226	rVB2	1309	1359	58.10%	1.065%
14	3.367	244	246	249	rBV2	1088	1155	49.38%	0.905%
15	3.438	256	258	261	rBV2	636	910	38.91%	0.713%
16	3.709	303	304	309	rVB2	1490	1840	78.67%	1.442%
17	4.020	356	357	361	rVB2	1373	1240	53.01%	0.972%
18	4.073	363	366	369	rVB2	1419	1822	77.90%	1.428%
19	4.097	369	370	374	rBV	1566	1995	85.29%	1.563%
20	4.426	425	426	429	rVB2	1200	1161	49.64%	0.910%
21	4.450	429	430	432	rBV	1163	1096	46.86%	0.859%
22	4.697	468	472	473	rBV	834	1053	45.02%	0.825%
23	4.744	477	480	483	rBV2	1388	1880	80.38%	1.473%
24	5.132	542	546	549	rBV2	1078	1217	52.03%	0.954%
25	5.167	549	552	555	rBV2	1244	1573	67.25%	1.232%
26	5.220	559	561	565	rBV	1036	1090	46.60%	0.854%
27	5.538	612	615	619	rBV2	701	1073	45.87%	0.841%
28	5.761	649	653	656	rVB2	1374	1899	81.19%	1.488%
29	5.797	656	659	661	rBV2	1174	1401	59.90%	1.098%
30	5.873	670	672	674	rVB	1302	906	38.73%	0.710%
31	5.926	679	681	684	rVV	940	907	38.78%	0.711%
32	5.979	688	690	693	rBV2	1094	1394	59.60%	1.092%
33	6.273	737	740	741	rVB	1759	1139	48.70%	0.892%
34	6.297	741	744	746	rBV	959	1084	46.34%	0.849%
35	6.326	748	749	753	rBV	733	1146	49.00%	0.898%
36	6.367	754	756	759	rVB2	1590	1435	61.35%	1.124%

Data Path : Z:\voasrv\HPCHEM1\MSVOA_D\Data\VD032122\
 Data File : VD072351.D
 Acq On : 21 Mar 2022 20:23
 Operator : VA/SY
 Sample : N1968-10
 Misc : 5.02G/5.00ml/MSVOA_D/SOIL
 ALS Vial : 24 Sample Multiplier: 1

Instrument :
 MSVOA_D
 ClientSampleId :
 G-2-11-23-24

Integration Parameters: RTEINT.P

Integrator: RTE
 Smoothing : ON
 Sampling : 1
 Start Thrs : 0.2
 Stop Thrs : 0

Filtering: 5
 Min Area: 3 % of largest Peak
 Max Peaks: 100
 Peak Location: TOP

If leading or trailing edge < 100 prefer < Baseline drop else tangent >
 Peak separation: 5

Method : Z:\voasrv\HPCHEM1\MSVOA_D\Method\82D031122S.M
 Title : SW846 8260

37	6.408	759	763	764	rVB2	933	991	42.37%	0.776%
38	6.444	767	769	771	rBV	1192	1066	45.58%	0.835%
39	6.855	834	839	841	rBV2	1318	2112	90.29%	1.655%
40	7.402	931	932	936	rVB2	1526	1493	63.83%	1.170%
41	7.450	938	940	943	rVB	1068	1039	44.42%	0.814%
42	7.691	979	981	986	rVB2	1373	1619	69.22%	1.268%
43	7.744	986	990	991	rBV2	1123	1214	51.90%	0.951%
44	7.838	1005	1006	1008	rBV	980	910	38.91%	0.713%
45	7.950	1022	1025	1026	rBV2	1154	1151	49.21%	0.902%
46	7.973	1026	1029	1030	rBV2	1187	1288	55.07%	1.009%
47	8.255	1076	1077	1082	rVB2	968	1112	47.54%	0.871%
48	8.779	1165	1166	1170	rBV2	1264	1114	47.63%	0.873%
49	8.820	1170	1173	1175	rBV2	971	1133	48.44%	0.888%
50	9.002	1201	1204	1205	rBV	918	1085	46.39%	0.850%
51	9.097	1218	1220	1222	rBV2	1208	1096	46.86%	0.859%
52	9.226	1240	1242	1245	rVB2	1021	949	40.57%	0.744%
53	9.255	1245	1247	1249	rBV2	1132	1111	47.50%	0.870%
54	9.391	1267	1270	1271	rVB	1248	920	39.33%	0.721%
55	9.485	1285	1286	1292	rBV2	773	1333	56.99%	1.044%
56	9.673	1316	1318	1319	rBV	1156	909	38.86%	0.712%
57	9.726	1324	1327	1330	rBV2	1389	1643	70.24%	1.287%
58	9.861	1346	1350	1352	rVV3	965	1363	58.27%	1.068%
59	9.902	1355	1357	1360	rVV	1262	1077	46.05%	0.844%
60	9.932	1360	1362	1365	rVV	1214	949	40.57%	0.744%
61	10.079	1385	1387	1389	rVB	1163	1087	46.47%	0.852%
62	10.108	1389	1392	1393	rBV2	1209	997	42.63%	0.781%
63	10.138	1396	1397	1400	rBV2	1324	1247	53.31%	0.977%
64	10.202	1406	1408	1417	rVB3	1037	1951	83.41%	1.529%
65	10.285	1420	1422	1425	rBV	1244	1189	50.83%	0.932%
66	10.396	1437	1441	1443	rBV2	1141	1087	46.47%	0.852%
67	10.502	1457	1459	1461	rBV2	968	1022	43.69%	0.801%
68	10.749	1498	1501	1502	rBV2	1158	1035	44.25%	0.811%
69	10.991	1540	1542	1543	rBV	1351	1320	56.43%	1.034%
70	11.043	1549	1551	1554	rVB	1366	1402	59.94%	1.098%
71	11.067	1554	1555	1559	rBV2	920	1152	49.25%	0.903%
72	11.120	1563	1564	1567	rVB2	1028	932	39.85%	0.730%
73	11.149	1567	1569	1573	rBV2	1042	1501	64.17%	1.176%
74	11.249	1584	1586	1589	rBV2	840	981	41.94%	0.769%
75	11.285	1589	1592	1595	rBV	1536	1299	55.54%	1.018%
76	11.602	1644	1646	1649	rBV2	1308	1502	64.22%	1.177%

Data Path : Z:\voasrv\HPCHEM1\MSVOA_D\Data\VD032122\
 Data File : VD072351.D
 Acq On : 21 Mar 2022 20:23
 Operator : VA/SY
 Sample : N1968-10
 Misc : 5.02G/5.00ml/MSVOA_D/SOIL
 ALS Vial : 24 Sample Multiplier: 1

Instrument :
 MSVOA_D
 ClientSampleId :
 G-2-11-23-24

Integration Parameters: RTEINT.P

Integrator: RTE
 Smoothing : ON
 Sampling : 1
 Start Thrs : 0.2
 Stop Thrs : 0

Filtering: 5
 Min Area: 3 % of largest Peak
 Max Peaks: 100
 Peak Location: TOP

If leading or trailing edge < 100 prefer < Baseline drop else tangent >
 Peak separation: 5

Method : Z:\voasrv\HPCHEM1\MSVOA_D\Method\82D031122S.M
 Title : SW846 8260

77	11.785	1674	1677	1679	rBV	1076	1161	49.64%	0.910%
78	11.808	1679	1681	1684	rBV	1380	1069	45.70%	0.838%
79	11.973	1706	1709	1712	rBV	2073	2339	100.00%	1.833%
80	12.079	1726	1727	1731	rBV	996	993	42.45%	0.778%
81	12.285	1760	1762	1764	rVB	1193	919	39.29%	0.720%
82	12.490	1794	1797	1798	rBV	1965	1427	61.01%	1.118%
83	12.508	1798	1800	1801	rBV2	1588	1106	47.29%	0.867%
84	12.555	1807	1808	1810	rBV2	1560	1375	58.79%	1.077%
85	12.743	1838	1840	1843	rVB	1239	1074	45.92%	0.841%
86	12.814	1851	1852	1857	rVB2	1421	1663	71.10%	1.303%
87	12.890	1863	1865	1866	rBV2	1362	1186	50.71%	0.929%
88	12.908	1866	1868	1871	rBV	1474	1332	56.95%	1.044%
89	12.967	1876	1878	1880	rBV2	1267	1005	42.97%	0.787%
90	13.008	1882	1885	1886	rBV2	1506	1962	83.88%	1.537%
91	13.102	1898	1901	1903	rVB2	1465	966	41.30%	0.757%
92	13.179	1912	1914	1915	rBV	1341	1258	53.78%	0.986%
93	13.214	1918	1920	1923	rBV3	1088	1131	48.35%	0.886%
94	13.279	1929	1931	1933	rBV2	1247	1167	49.89%	0.914%
95	13.837	2025	2026	2029	rVB	3716	1882	80.46%	1.475%
96	14.120	2072	2074	2076	rVB2	1701	1139	48.70%	0.892%
97	14.137	2076	2077	2079	rBV	1330	1177	50.32%	0.922%
98	14.155	2079	2080	2082	rVB2	1857	1118	47.80%	0.876%
99	14.579	2150	2152	2155	rBV2	2196	2078	88.84%	1.628%
100	15.590	2322	2324	2327	rBV3	2197	1958	83.71%	1.534%

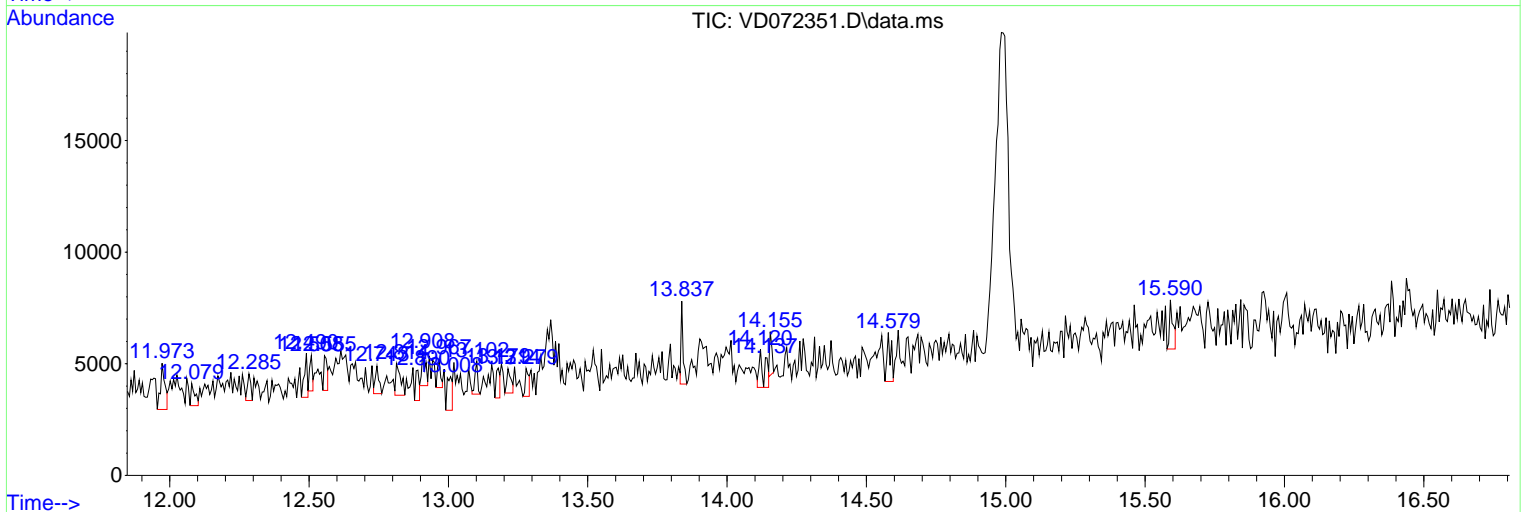
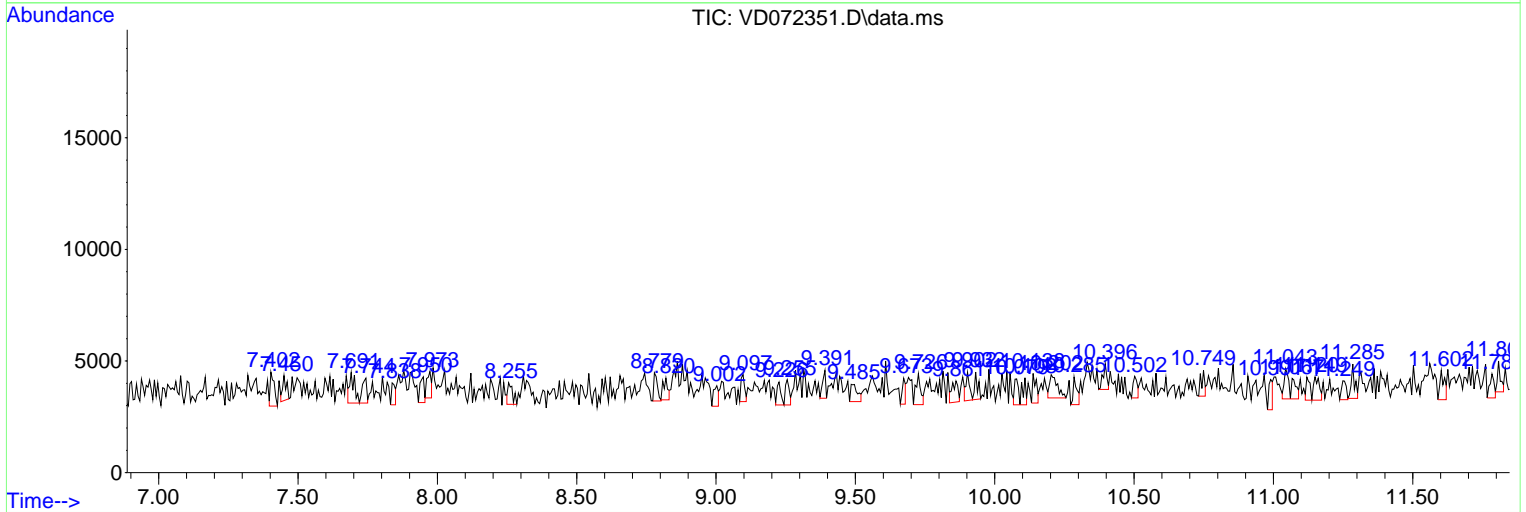
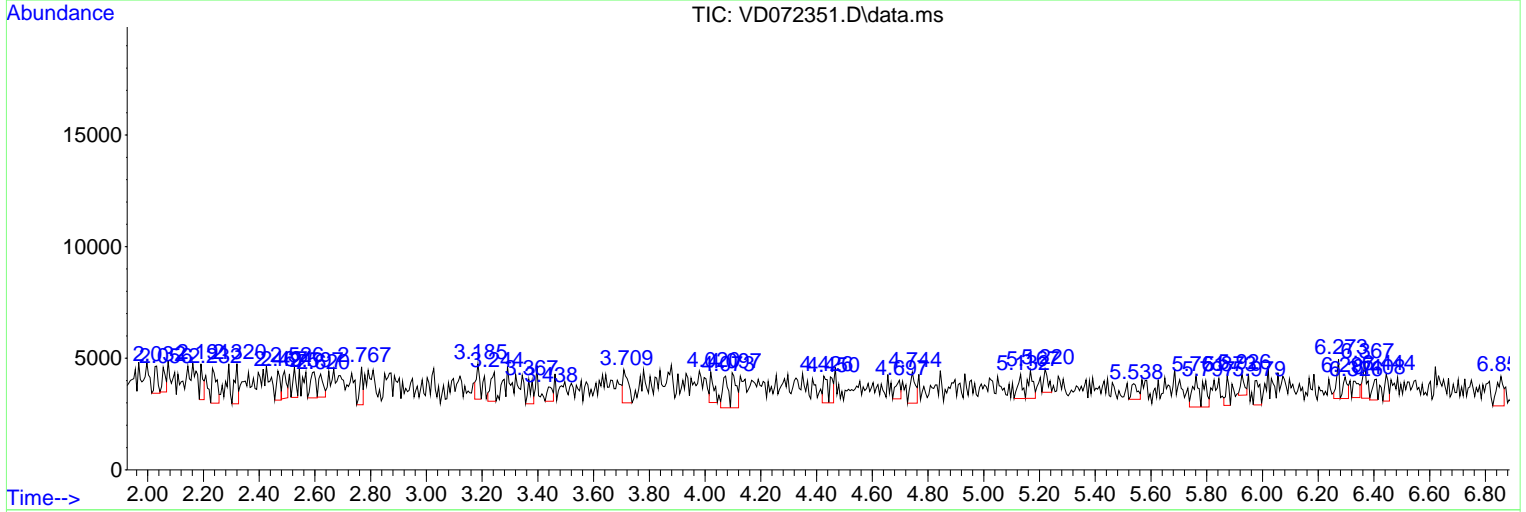
Sum of corrected areas: 127632

Data Path : Z:\voasrv\HPCHEM1\MSVOA_D\Data\VD032122\
 Data File : VD072351.D
 Acq On : 21 Mar 2022 20:23
 Operator : VA/SY
 Sample : N1968-10
 Misc : 5.02G/5.00ml/MSVOA_D/SOIL
 ALS Vial : 24 Sample Multiplier: 1

Instrument :
 MSVOA_D
 ClientSampleId :
 G-2-11-23-24

Quant Method : Z:\voasrv\HPCHEM1\MSVOA_D\Method\82D031122S.M
 Quant Title : SW846 8260

TIC Library : C:\Database\NIST20.L
 TIC Integration Parameters: LSCINT.P



Library Search Compound Report

Data Path : Z:\voasrv\HPCHEM1\MSVOA_D\Data\VD032122\
Data File : VD072351.D
Acq On : 21 Mar 2022 20:23
Operator : VA/SY
Sample : N1968-10
Misc : 5.02G/5.00ml/MSVOA_D/SOIL
ALS Vial : 24 Sample Multiplier: 1

Instrument :
MSVOA_D
ClientSampleId :
G-2-11-23-24

Quant Method : Z:\voasrv\HPCHEM1\MSVOA_D\Method\82D031122S.M
Quant Title : SW846 8260

TIC Library : C:\Database\NIST20.L
TIC Integration Parameters: LSCINT.P

No Library Search Compounds Detected

Data Path : Z:\voasrv\HPCHEM1\MSVOA_D\Data\VD032122\
Data File : VD072351.D
Acq On : 21 Mar 2022 20:23
Operator : VA/SY
Sample : N1968-10
Misc : 5.02G/5.00ml/MSVOA_D/SOIL
ALS Vial : 24 Sample Multiplier: 1

Instrument :
MSVOA_D
ClientSampleId :
G-2-11-23-24

Quant Method : Z:\voasrv\HPCHEM1\MSVOA_D\Method\82D031122S.M
Quant Title : SW846 8260

TIC Library : C:\Database\NIST20.L
TIC Integration Parameters: LSCINT.P

TIC Top Hit name	RT	EstConc	Units	Response	--Internal Standard--			
					#	RT	Resp	Conc
