

Data Path : Z:\voasrv\HPCHEM1\MSVOA_D\Data\VD032222\
 Data File : VD072364.D
 Acq On : 22 Mar 2022 15:36
 Operator : VA/SY
 Sample : N2033-03
 Misc : 5.00G/5.00ml/MSVOA_D/SOIL
 ALS Vial : 13 Sample Multiplier: 1

Instrument :
 MSVOA_D
 ClientSampleId :
 VNJ-237RE

Quant Time: Mar 23 01:13:05 2022
 Quant Method : Z:\voasrv\HPCHEM1\MSVOA_D\Method\82D031122S.M
 Quant Title : SW846 8260
 QLast Update : Mon Mar 14 05:18:06 2022
 Response via : Initial Calibration

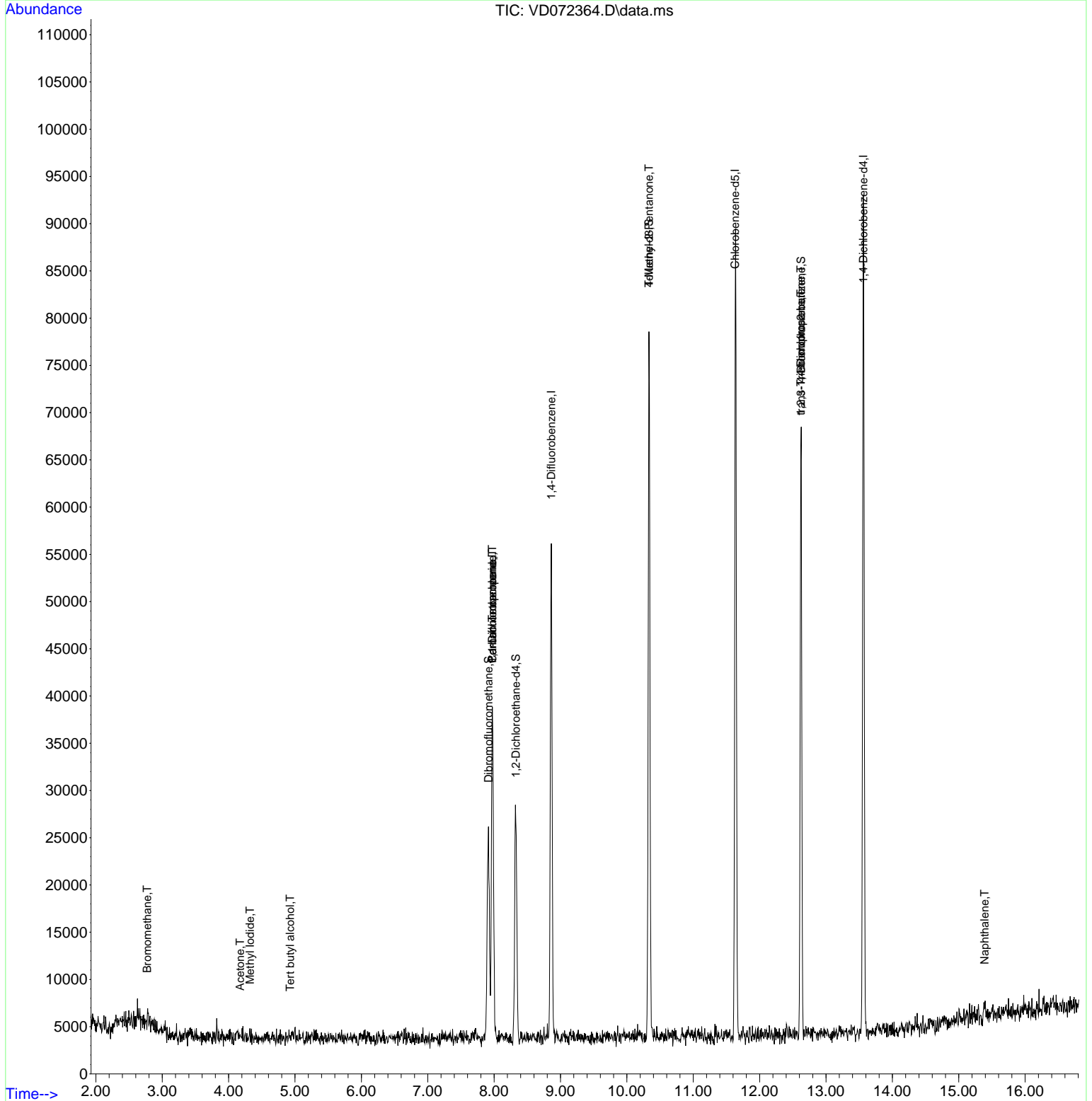
| Compound | R.T. | QIon | Response | Conc | Units | Dev(Min) |
|-------------------------------|--------|-------|----------|-----------|-------|----------|
| Internal Standards | | | | | | |
| 1) Pentafluorobenzene | 7.973 | 168 | 24930 | 50.000 | ug/l | # 0.00 |
| 34) 1,4-Difluorobenzene | 8.861 | 114 | 39812 | 50.000 | ug/l | 0.00 |
| 63) Chlorobenzene-d5 | 11.632 | 117 | 48423 | 50.000 | ug/l | # 0.00 |
| 72) 1,4-Dichlorobenzene-d4 | 13.561 | 152 | 23942 | 50.000 | ug/l | 0.00 |
| System Monitoring Compounds | | | | | | |
| 33) 1,2-Dichloroethane-d4 | 8.326 | 65 | 20208 | 72.735 | ug/l | 0.00 |
| Spiked Amount | 50.000 | Range | 50 - 163 | Recovery | = | 145.460% |
| 35) Dibromofluoromethane | 7.914 | 113 | 15353 | 54.801 | ug/l | 0.00 |
| Spiked Amount | 50.000 | Range | 54 - 147 | Recovery | = | 109.600% |
| 50) Toluene-d8 | 10.332 | 98 | 50077 | 48.884 | ug/l | 0.00 |
| Spiked Amount | 50.000 | Range | 49 - 140 | Recovery | = | 97.760% |
| 62) 4-Bromofluorobenzene | 12.626 | 95 | 21834 | 54.854 | ug/l | 0.00 |
| Spiked Amount | 50.000 | Range | 25 - 144 | Recovery | = | 109.700% |
| Target Compounds | | | | | | |
| | | | | | | Qvalue |
| 5) Bromomethane | 2.773 | 94 | 715 | 5.552 | ug/l | # 69 |
| 10) Methyl Iodide | 4.320 | 142 | 476 | 4.009 | ug/l | # 38 |
| 11) Tert butyl alcohol | 4.926 | 59 | 56 | 3.476 | ug/l | # 74 |
| 16) Acetone | 4.173 | 43 | 79 | 1.310 | ug/l | # 47 |
| 20) Methylene Chloride | 4.967 | 84 | 389 | Below Cal | | # 28 |
| 36) 1,1-Dichloropropene | 7.973 | 75 | 2004 | 5.099 | ug/l | # 43 |
| 38) Carbon Tetrachloride | 7.973 | 117 | 2766 | 6.191 | ug/l | # 13 |
| 51) 4-Methyl-2-Pentanone | 10.332 | 43 | 345 | 1.966 | ug/l | # 1 |
| 76) 1,2,3-Trichloropropane | 12.620 | 75 | 10688 | 40.469 | ug/l | # 100 |
| 81) trans-1,4-Dichloro-2-b... | 12.620 | 75 | 10688 | 100.408 | ug/l | # 7 |
| 95) Naphthalene | 15.390 | 128 | 967 | 1.086 | ug/l | # 85 |

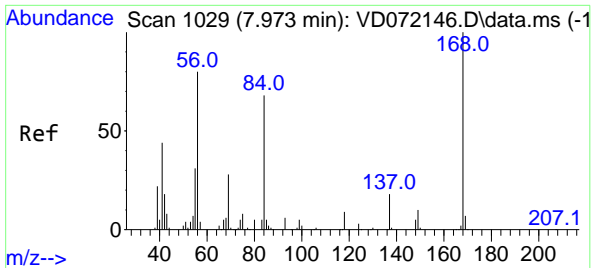
(#) = qualifier out of range (m) = manual integration (+) = signals summed

Data Path : Z:\voasrv\HPCHEM1\MSVOA_D\Data\VD032222\
 Data File : VD072364.D
 Acq On : 22 Mar 2022 15:36
 Operator : VA/SY
 Sample : N2033-03
 Misc : 5.00G/5.00ml/MSVOA_D/SOIL
 ALS Vial : 13 Sample Multiplier: 1

Instrument :
 MSVOA_D
 ClientSampleId :
 VNJ-237RE

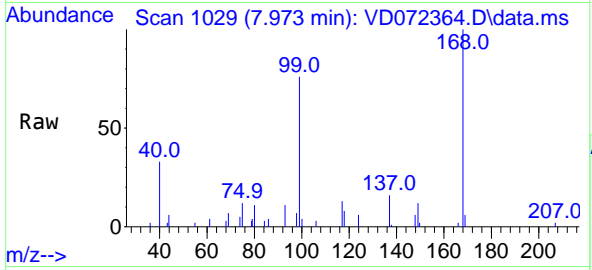
Quant Time: Mar 23 01:13:05 2022
 Quant Method : Z:\voasrv\HPCHEM1\MSVOA_D\Method\82D031122S.M
 Quant Title : SW846 8260
 QLast Update : Mon Mar 14 05:18:06 2022
 Response via : Initial Calibration



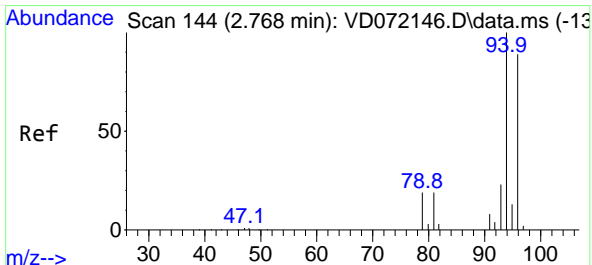
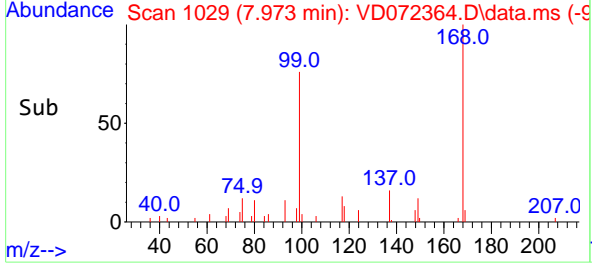
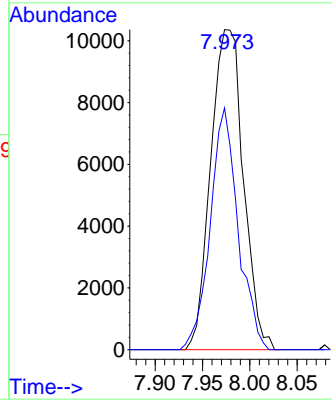


#1
 Pentafluorobenzene
 Concen: 50.000 ug/l
 RT: 7.973 min Scan# 10
 Delta R.T. 0.000 min
 Lab File: VD072364.D
 Acq: 22 Mar 2022 15:36

Instrument : MSVOA_D
 Client Sample Id : VNJ-237RE

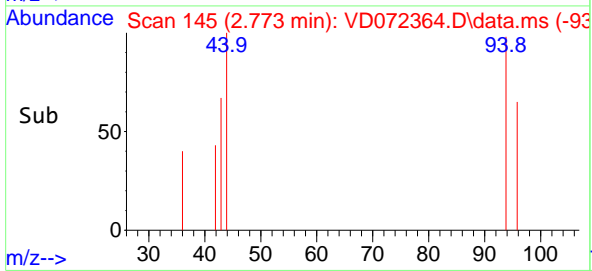
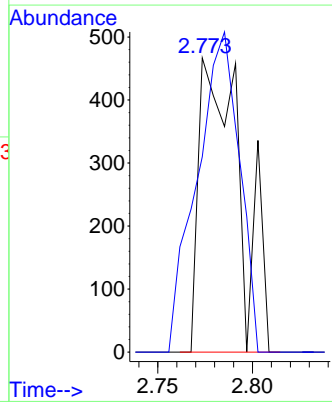
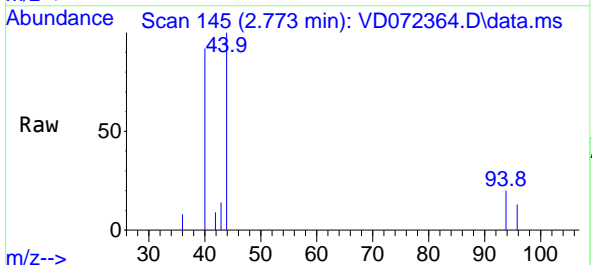


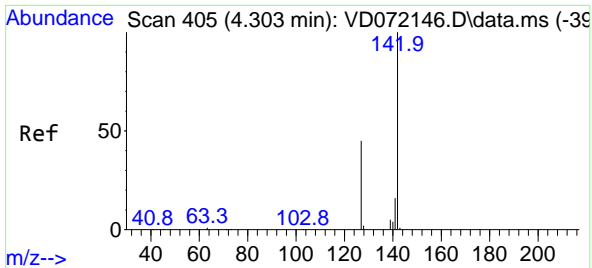
Tgt Ion: 168 Resp: 24930
 Ion Ratio Lower Upper
 168 100
 99 75.5 49.8 74.6#



#5
 Bromomethane
 Concen: 5.552 ug/l
 RT: 2.773 min Scan# 145
 Delta R.T. 0.006 min
 Lab File: VD072364.D
 Acq: 22 Mar 2022 15:36

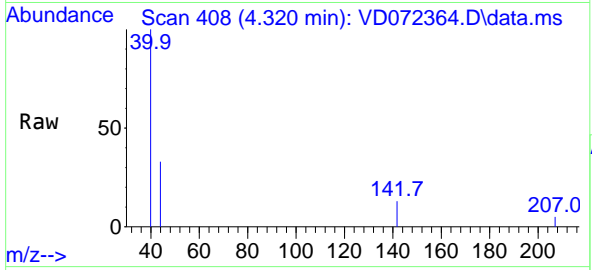
Tgt Ion: 94 Resp: 715
 Ion Ratio Lower Upper
 94 100
 96 66.4 77.6 116.4#





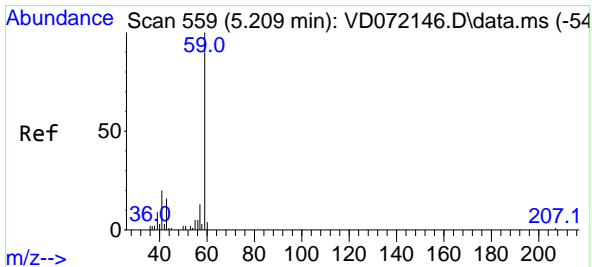
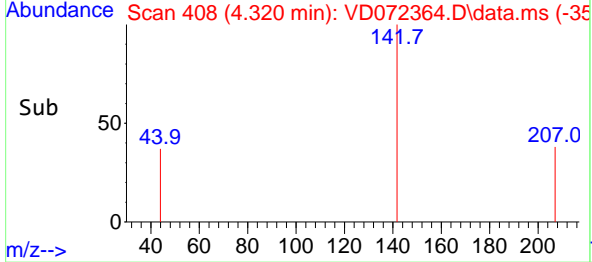
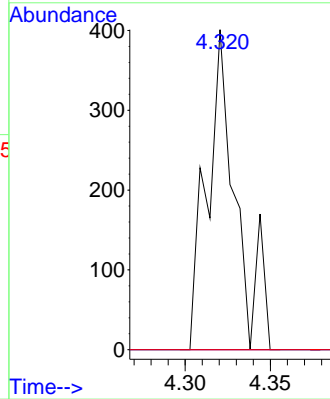
#10
 Methyl Iodide
 Concen: 4.009 ug/l
 RT: 4.320 min Scan# 408
 Delta R.T. 0.017 min
 Lab File: VD072364.D
 Acq: 22 Mar 2022 15:36

Instrument : MSVOA_D
 Client Sample Id : VNJ-237RE



Tgt Ion:142 Resp: 476

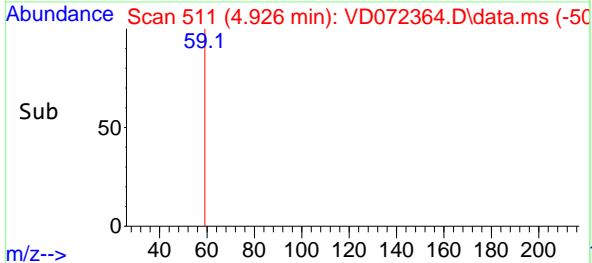
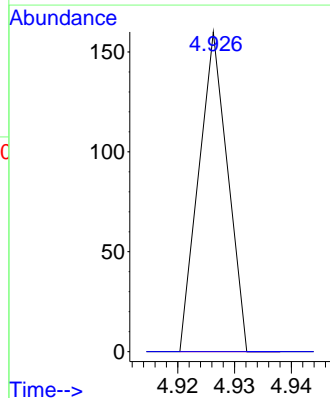
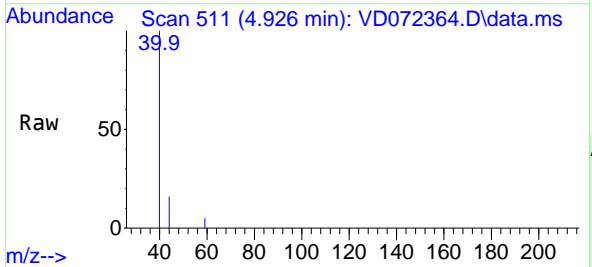
| Ion | Ratio | Lower | Upper |
|-----|-------|-------|-------|
| 142 | 100 | | |
| 127 | 0.0 | 37.3 | 55.9# |
| 141 | 0.0 | 11.7 | 17.5# |

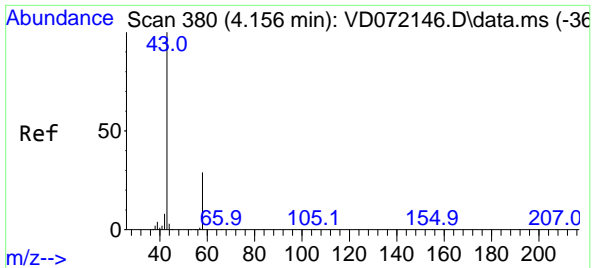


#11
 Tert butyl alcohol
 Concen: 3.476 ug/l
 RT: 4.926 min Scan# 511
 Delta R.T. -0.282 min
 Lab File: VD072364.D
 Acq: 22 Mar 2022 15:36

Tgt Ion: 59 Resp: 56

| Ion | Ratio | Lower | Upper |
|-----|-------|-------|-------|
| 59 | 100 | | |
| 57 | 0.0 | 7.8 | 11.6# |

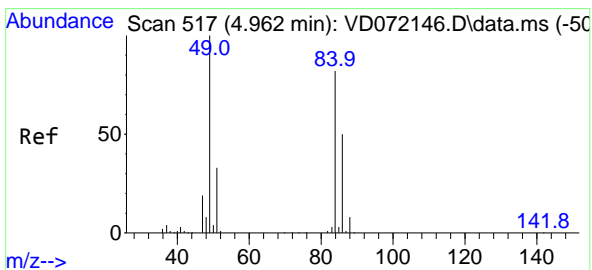
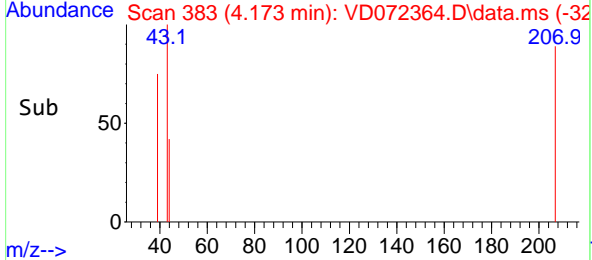
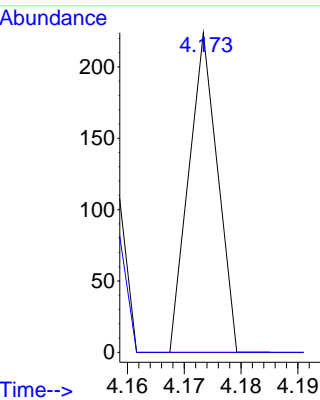
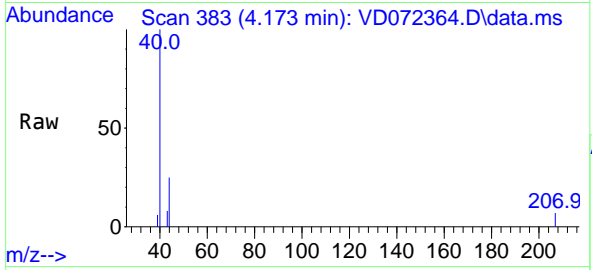




#16
 Acetone
 Concen: 1.310 ug/l
 RT: 4.173 min Scan# 31
 Delta R.T. 0.018 min
 Lab File: VD072364.D
 Acq: 22 Mar 2022 15:36

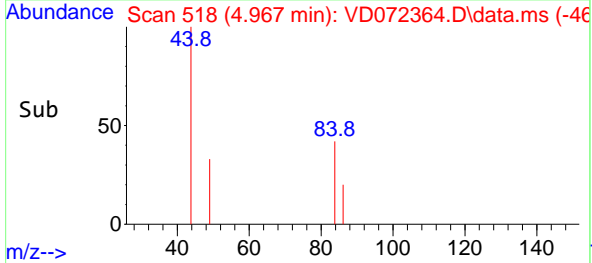
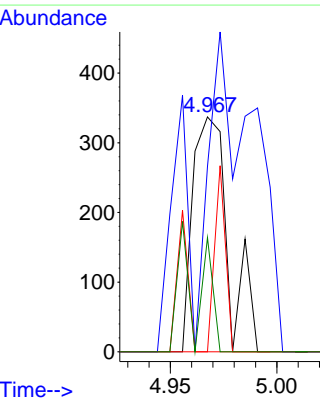
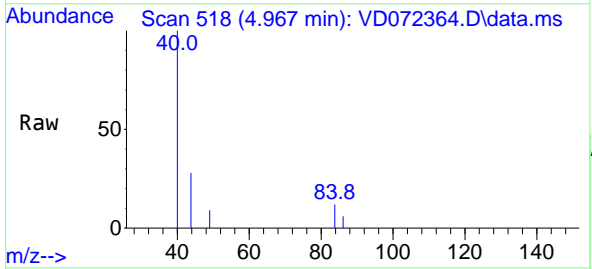
Instrument : MSVOA_D
 ClientSampleId : VNJ-237RE

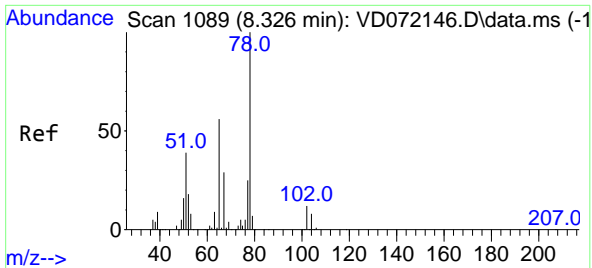
Tgt Ion: 43 Resp: 79
 Ion Ratio Lower Upper
 43 100
 58 0.0 22.1 33.1#



#20
 Methylene Chloride
 Concen: Below Cal
 RT: 4.967 min Scan# 518
 Delta R.T. 0.005 min
 Lab File: VD072364.D
 Acq: 22 Mar 2022 15:36

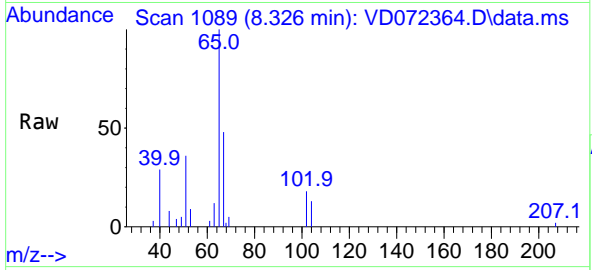
Tgt Ion: 84 Resp: 389
 Ion Ratio Lower Upper
 84 100
 49 20.2 112.8 169.2#
 51 0.0 32.6 48.8#
 86 48.7 47.9 71.9



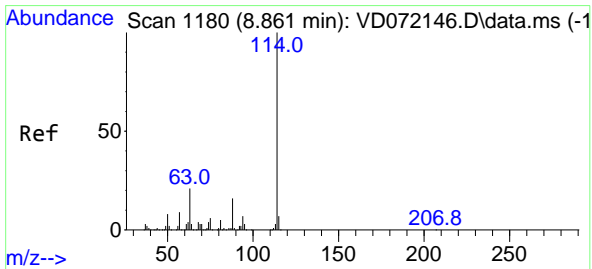
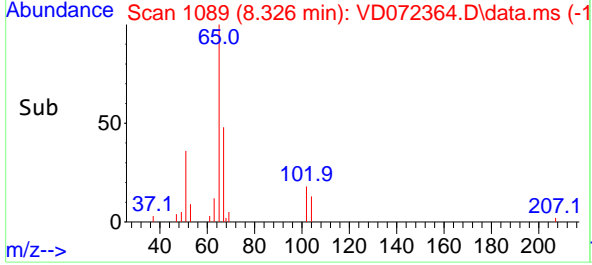
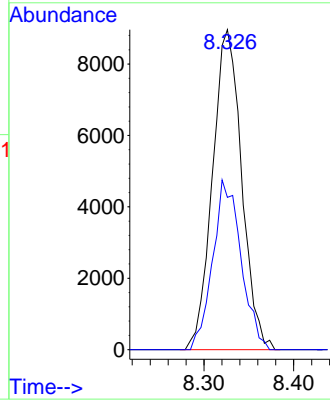


#33
 1,2-Dichloroethane-d4
 Concen: 72.735 ug/l
 RT: 8.326 min Scan# 1089
 Delta R.T. 0.000 min
 Lab File: VD072364.D
 Acq: 22 Mar 2022 15:36

Instrument : MSVOA_D
 ClientSampleId : VNJ-237RE

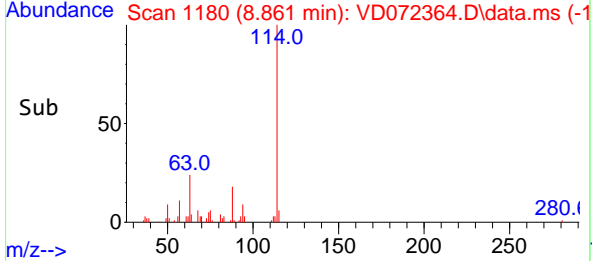
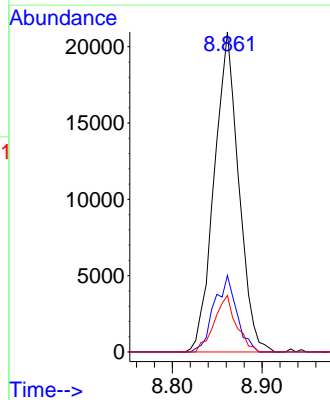
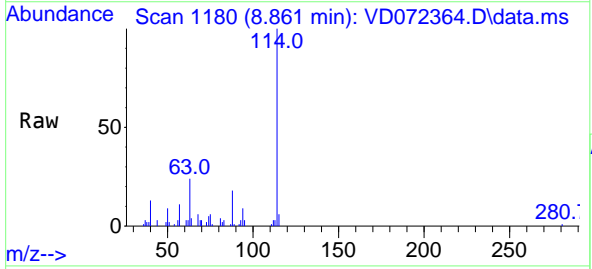


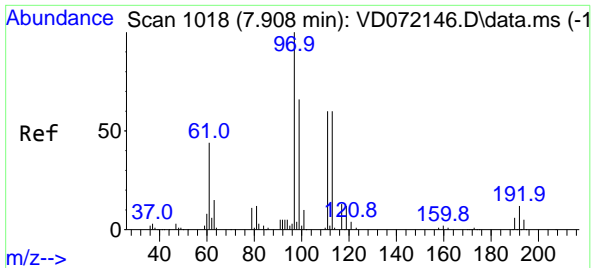
Tgt Ion: 65 Resp: 20208
 Ion Ratio Lower Upper
 65 100
 67 51.5 0.0 101.4



#34
 1,4-Difluorobenzene
 Concen: 50.000 ug/l
 RT: 8.861 min Scan# 1180
 Delta R.T. 0.000 min
 Lab File: VD072364.D
 Acq: 22 Mar 2022 15:36

Tgt Ion: 114 Resp: 39812
 Ion Ratio Lower Upper
 114 100
 63 23.9 0.0 46.6
 88 17.7 0.0 33.2



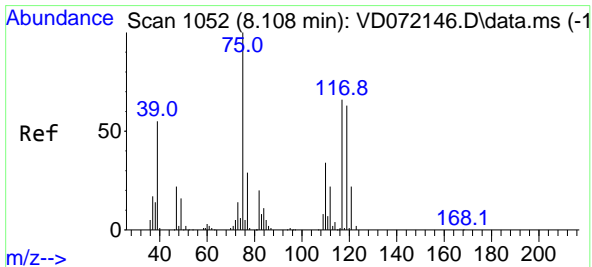
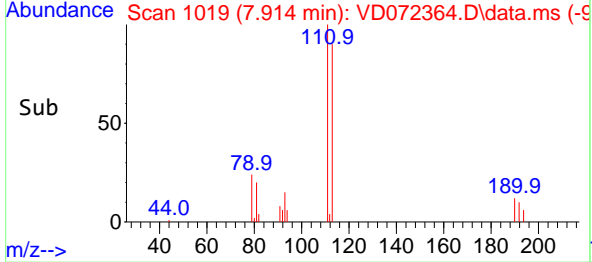
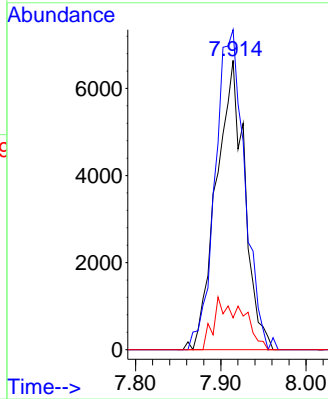
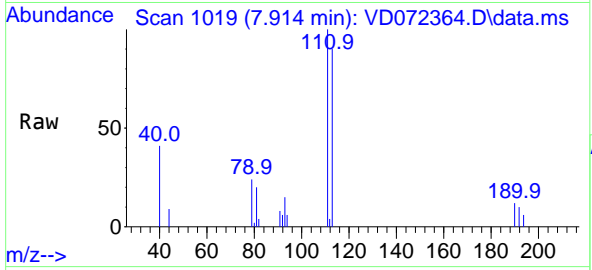


#35
 Dibromofluoromethane
 Concen: 54.801 ug/l
 RT: 7.914 min Scan# 1018
 Delta R.T. 0.006 min
 Lab File: VD072364.D
 Acq: 22 Mar 2022 15:36

Instrument : MSVOA_D
 ClientSampleId : VNJ-237RE

Tgt Ion:113 Resp: 15353

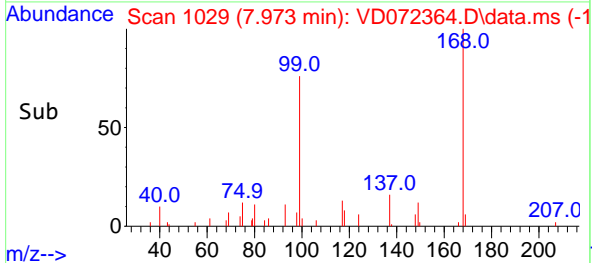
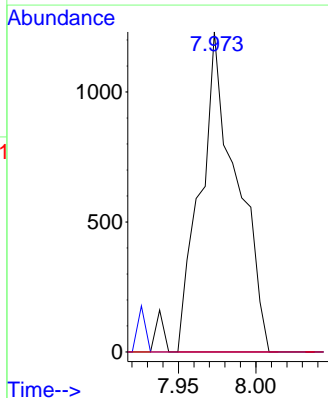
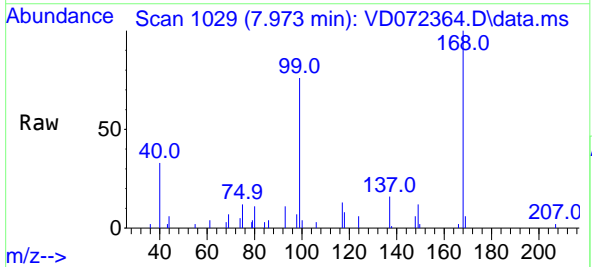
| Ion | Ratio | Lower | Upper |
|-----|-------|-------|-------|
| 113 | 100 | | |
| 111 | 114.3 | 83.8 | 125.6 |
| 192 | 10.8 | 14.6 | 21.8# |

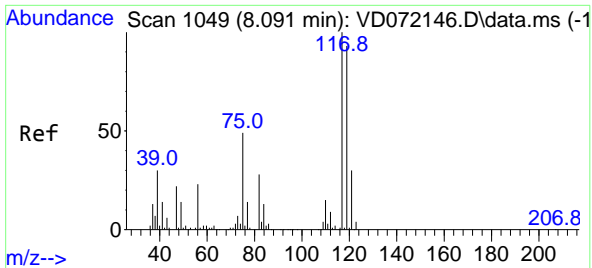


#36
 1,1-Dichloropropene
 Concen: 5.099 ug/l
 RT: 7.973 min Scan# 1029
 Delta R.T. -0.135 min
 Lab File: VD072364.D
 Acq: 22 Mar 2022 15:36

Tgt Ion: 75 Resp: 2004

| Ion | Ratio | Lower | Upper |
|-----|-------|-------|-------|
| 75 | 100 | | |
| 110 | 0.0 | 16.4 | 49.1# |
| 77 | 0.0 | 24.2 | 36.2# |



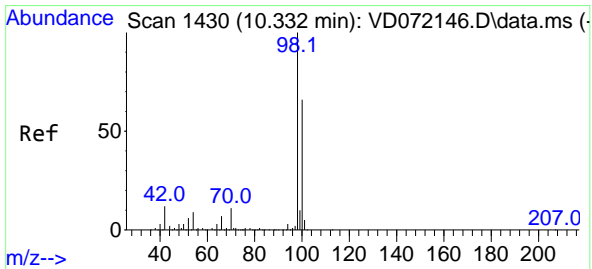
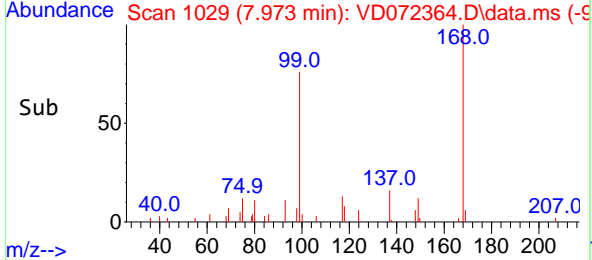
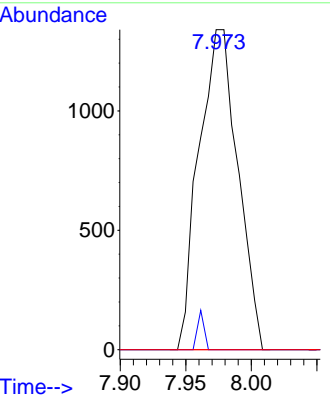
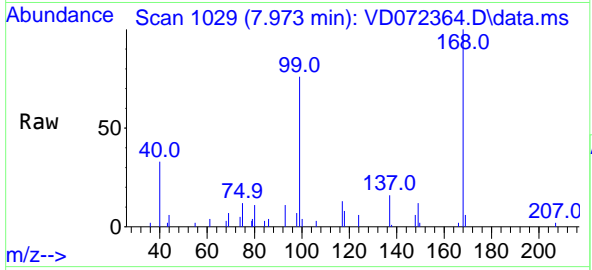


#38
 Carbon Tetrachloride
 Concen: 6.191 ug/l
 RT: 7.973 min Scan# 1029
 Delta R.T. -0.118 min
 Lab File: VD072364.D
 Acq: 22 Mar 2022 15:36

Instrument : MSVOA_D
 ClientSampleId : VNJ-237RE

Tgt Ion:117 Resp: 2766

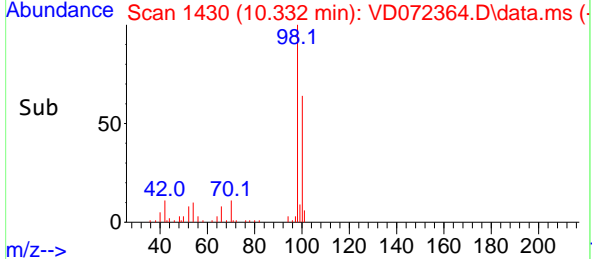
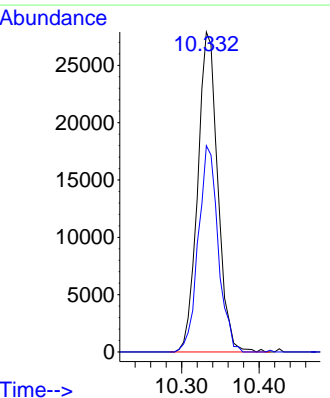
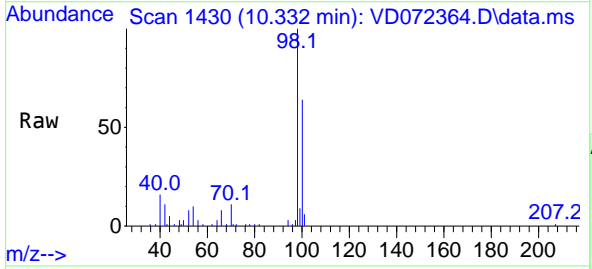
| Ion | Ratio | Lower | Upper |
|-----|-------|-------|--------|
| 117 | 100 | | |
| 119 | 0.0 | 75.8 | 113.6# |
| 121 | 0.0 | 24.5 | 36.7# |

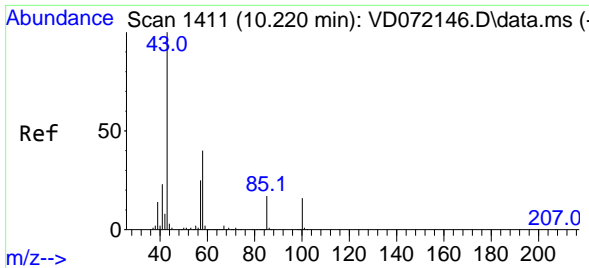


#50
 Toluene-d8
 Concen: 48.884 ug/l
 RT: 10.332 min Scan# 1430
 Delta R.T. -0.000 min
 Lab File: VD072364.D
 Acq: 22 Mar 2022 15:36

Tgt Ion: 98 Resp: 50077

| Ion | Ratio | Lower | Upper |
|-----|-------|-------|-------|
| 98 | 100 | | |
| 100 | 63.8 | 52.4 | 78.6 |

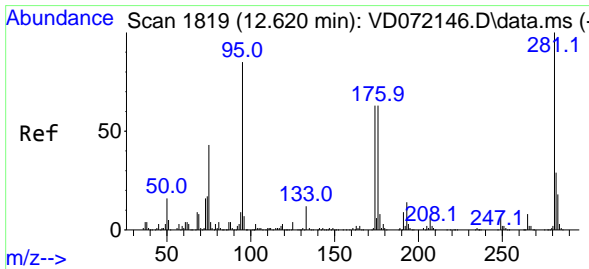
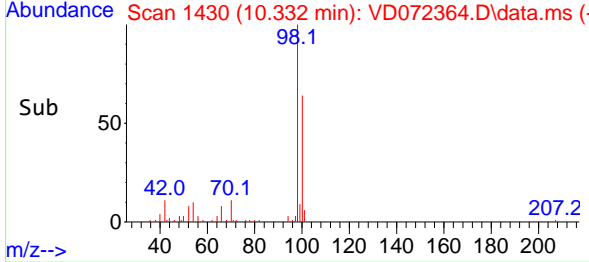
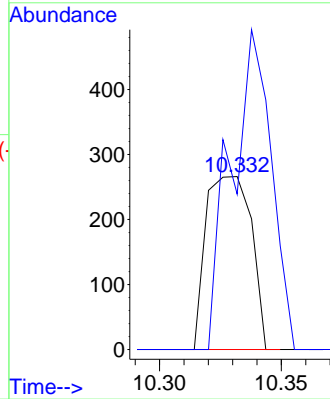
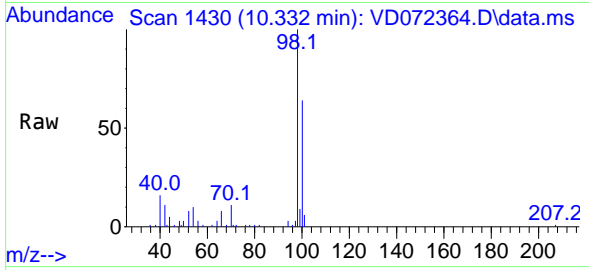




#51
 4-Methyl-2-Pentanone
 Concen: 1.966 ug/l
 RT: 10.332 min Scan# 1411
 Delta R.T. 0.112 min
 Lab File: VD072364.D
 Acq: 22 Mar 2022 15:36

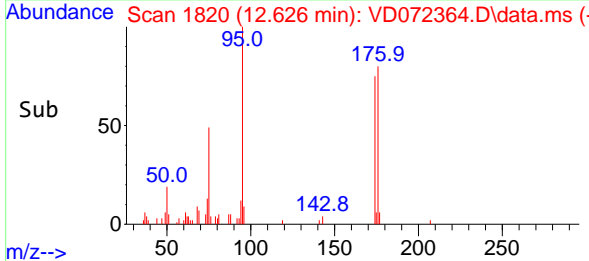
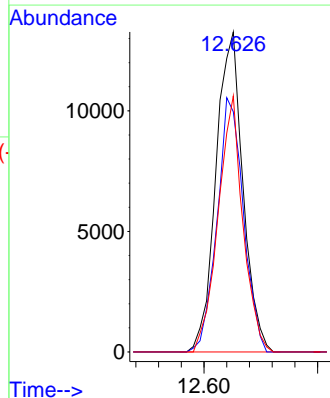
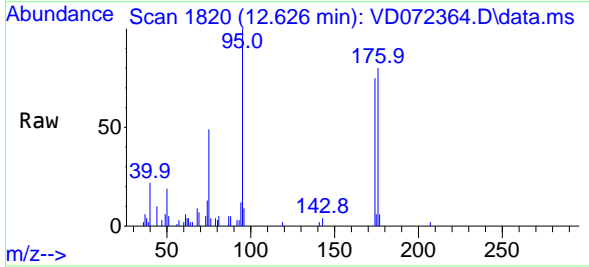
Instrument :
 MSVOA_D
 ClientSampleId :
 VNJ-237RE

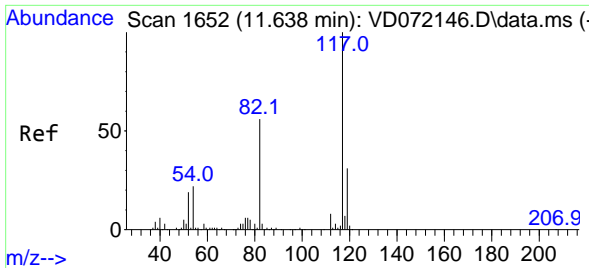
Tgt Ion: 43 Resp: 345
 Ion Ratio Lower Upper
 43 100
 58 163.5 28.6 43.0#



#62
 4-Bromofluorobenzene
 Concen: 54.854 ug/l
 RT: 12.626 min Scan# 1820
 Delta R.T. 0.006 min
 Lab File: VD072364.D
 Acq: 22 Mar 2022 15:36

Tgt Ion: 95 Resp: 21834
 Ion Ratio Lower Upper
 95 100
 174 77.7 0.0 152.8
 176 73.5 0.0 145.4



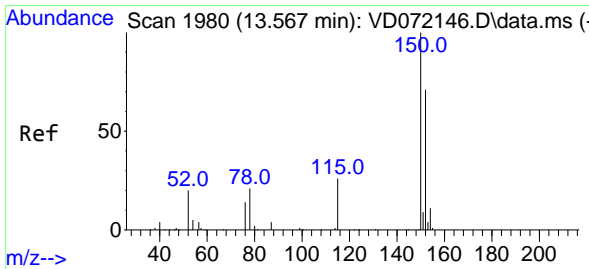
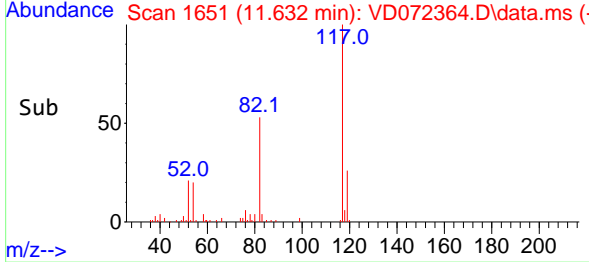
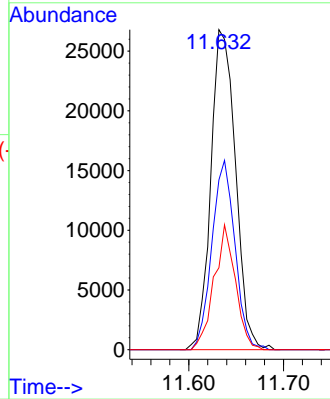
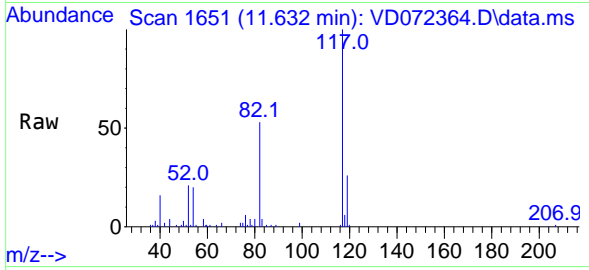


#63
 Chlorobenzene-d5
 Concen: 50.000 ug/l
 RT: 11.632 min Scan# 1117
 Delta R.T. -0.006 min
 Lab File: VD072364.D
 Acq: 22 Mar 2022 15:36

Instrument : MSVOA_D
 ClientSampleId : VNJ-237RE

Tgt Ion:117 Resp: 48423

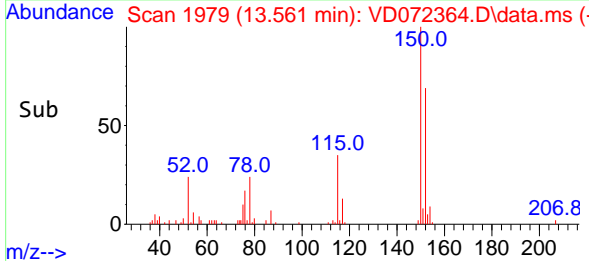
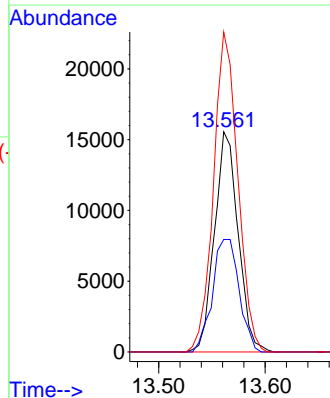
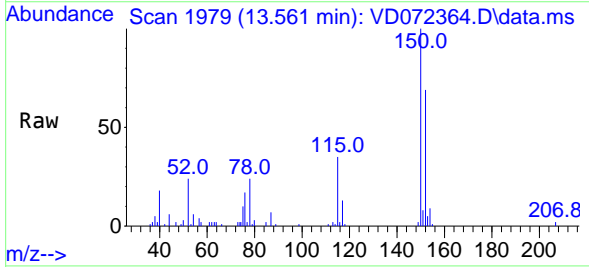
| Ion | Ratio | Lower | Upper |
|-----|-------|-------|-------|
| 117 | 100 | | |
| 82 | 53.0 | 45.3 | 67.9 |
| 119 | 25.6 | 26.6 | 40.0# |

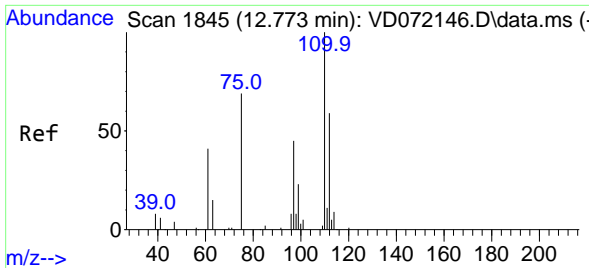


#72
 1,4-Dichlorobenzene-d4
 Concen: 50.000 ug/l
 RT: 13.561 min Scan# 1979
 Delta R.T. -0.006 min
 Lab File: VD072364.D
 Acq: 22 Mar 2022 15:36

Tgt Ion:152 Resp: 23942

| Ion | Ratio | Lower | Upper |
|-----|-------|-------|-------|
| 152 | 100 | | |
| 115 | 57.8 | 31.3 | 93.8 |
| 150 | 149.2 | 0.0 | 348.6 |

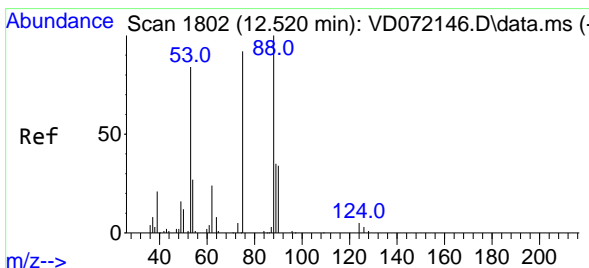
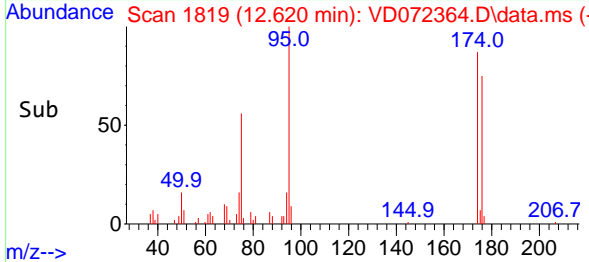
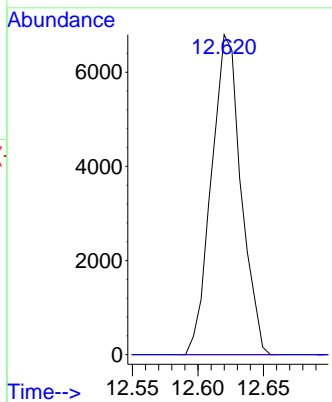
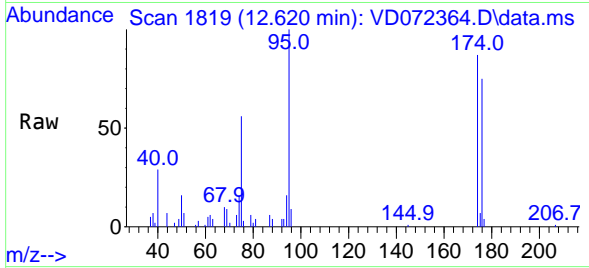




#76
 1,2,3-Trichloropropane
 Concen: 40.469 ug/l
 RT: 12.620 min Scan# 1819
 Delta R.T. -0.153 min
 Lab File: VD072364.D
 Acq: 22 Mar 2022 15:36

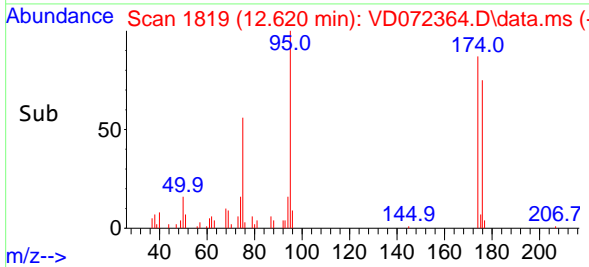
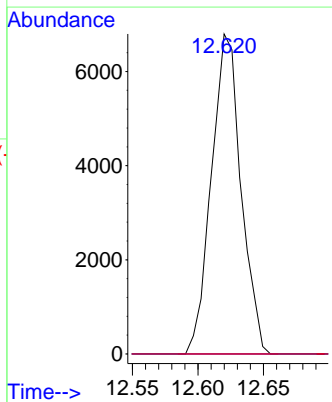
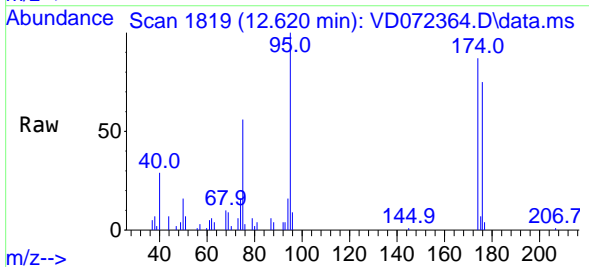
Instrument : MSVOA_D
 ClientSampleId : VNJ-237RE

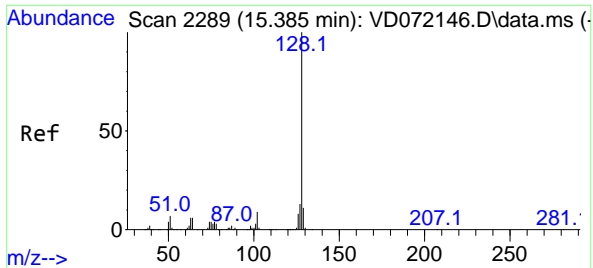
Tgt Ion: 75 Resp: 10688
 Ion Ratio Lower Upper
 75 100
 77 0.0 0.0 0.0



#81
 trans-1,4-Dichloro-2-butene
 Concen: 100.408 ug/l
 RT: 12.620 min Scan# 1819
 Delta R.T. 0.100 min
 Lab File: VD072364.D
 Acq: 22 Mar 2022 15:36

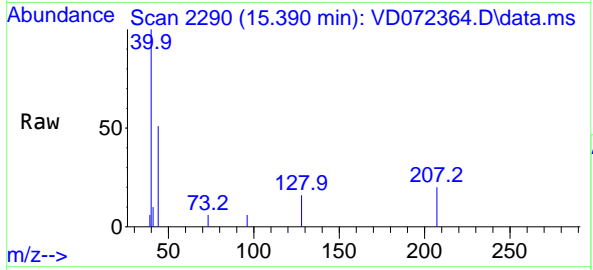
Tgt Ion: 75 Resp: 10688
 Ion Ratio Lower Upper
 75 100
 53 0.0 86.5 129.7#
 89 0.0 33.9 50.9#





#95
 Naphthalene
 Concen: 1.086 ug/l
 RT: 15.390 min Scan# 21
 Delta R.T. 0.006 min
 Lab File: VD072364.D
 Acq: 22 Mar 2022 15:36

Instrument : MSVOA_D
 ClientSampleId : VNJ-237RE



Tgt Ion:128 Resp: 967

| Ion | Ratio | Lower | Upper |
|-----|-------|-------|-------|
| 128 | 100 | | |
| 127 | 11.1 | 10.3 | 15.5 |
| 129 | 0.0 | 8.4 | 12.6# |

