

Data Path : Z:\VOASRV\HPCHEM1\MSVOA D\DATA\VD032519\  
 Data File : VD061325.D  
 Acq On : 26 Mar 2019 4:18  
 Operator : VA/AP  
 Sample : K2047-14  
 Misc : 6.09µ/5ml/MSVOA D/SOIL  
 ALS Vial : 40 Sample Multiplier: 1

Instrument :  
 MSVOA\_D  
 ClientSampleId :  
 WP022SB437-190318-(21-23)

Quant Time: Mar 26 07:21:03 2019  
 Quant Method : Z:\VOASRV\HPCHEM1\MSVOA\_D\METHOD\82D032519S.M  
 Quant Title : SW846 8260  
 QLast Update : Tue Mar 26 03:31:57 2019  
 Response via : Initial Calibration

Internal Standards	R.T.	QIon	Response	Conc	Units	Dev(Min)
1) Pentafluorobenzene	7.05	168	551529	50.00	µg/l	0.00
34) 1,4-Difluorobenzene	8.22	114	1006832	50.00	µg/l	0.00
63) Chlorobenzene-d5	12.37	117	797684	50.00	µg/l	0.00
72) 1,4-Dichlorobenzene-d4	14.51	152	341322	50.00	µg/l	0.00

## System Monitoring Compounds

33) 1,2-Dichloroethane-d4	7.45	65	214300	45.04	µg/l	0.00
Spiked Amount				50.000		
Recovery						= 90.08%
35) Dibromofluoromethane	6.92	113	345391	44.83	µg/l	-0.01
Spiked Amount				50.000		
Recovery						= 89.66%
50) Toluene-d8	10.41	98	689105	36.89	µg/l	0.00
Spiked Amount				50.000		
Recovery						= 73.78%
62) 4-Bromofluorobenzene	13.55	95	278628	38.23	µg/l	0.00
Spiked Amount				50.000		
Recovery						= 76.46%

## Target Compounds

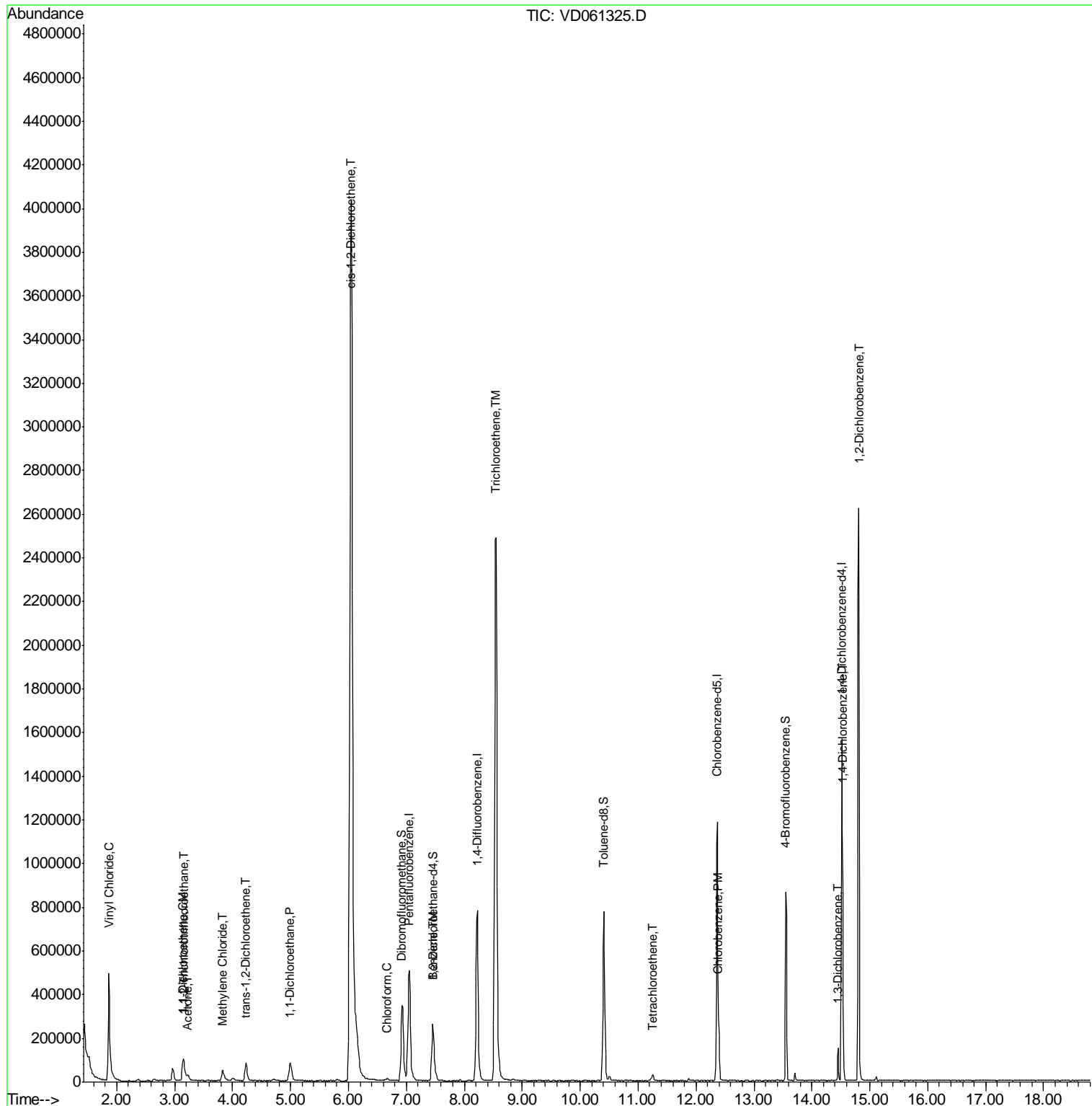
						Qvalue
4) Vinyl Chloride	1.86	62	636161	154.672	µg/l	97
9) 1,1,2-Trichlorotrifluoroet	3.16	101	28223	4.561	µg/l	92
12) 1,1-Dichloroethene	3.14	96	52929	9.940	µg/l	95
16) Acetone	3.23	43	47614	41.833	µg/l	96
20) Methylene Chloride	3.83	84	40711	6.302	µg/l	91
21) trans-1,2-Dichloroethene	4.23	96	57500	9.653	µg/l	98
24) 1,1-Dichloroethane	4.99	63	156808	16.911	µg/l	99
27) cis-1,2-Dichloroethene	6.05	96	3266606	509.591	µg/l	93
30) Chloroform	6.68	83	13886	1.405	µg/l	# 79
40) Benzene	7.45	78	25542	1.248	µg/l	93
44) Trichloroethene	8.55	130	1348337	182.236	µg/l	100
64) Tetrachloroethene	11.25	164	7078	1.288	µg/l	96
65) Chlorobenzene	12.40	112	103546	7.047	µg/l	97
87) 1,3-Dichlorobenzene	14.45	146	58966	5.365	µg/l	96
88) 1,4-Dichlorobenzene	14.53	146	243745	22.892	µg/l	98
91) 1,2-Dichlorobenzene	14.81	146	1011270	115.300	µg/l	97

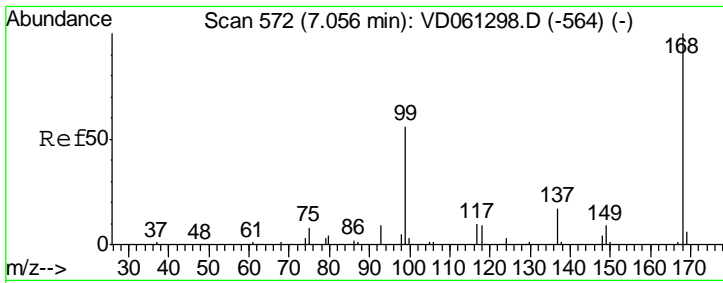
(#) = qualifier out of range (m) = manual integration (+) = signals summed

Data Path : Z:\VOASRV\HPCHEM1\MSVOA D\DATA\VD032519\  
 Data File : VD061325.D  
 Acq On : 26 Mar 2019 4:18  
 Operator : VA/AP  
 Sample : K2047-14  
 Misc : 6.09µ/5ml/MSVOA D/SOIL  
 ALS Vial : 40 Sample Multiplier: 1

Instrument :  
 MSVOA\_D  
 Client Sampled :  
 WP022SB437-190318-(21-23)

Quant Time: Mar 26 07:21:03 2019  
 Quant Method : Z:\VOASRV\HPCHEM1\MSVOA\_D\METHOD\82D032519S.M  
 Quant Title : SW846 8260  
 QLast Update : Tue Mar 26 03:31:57 2019  
 Response via : Initial Calibration

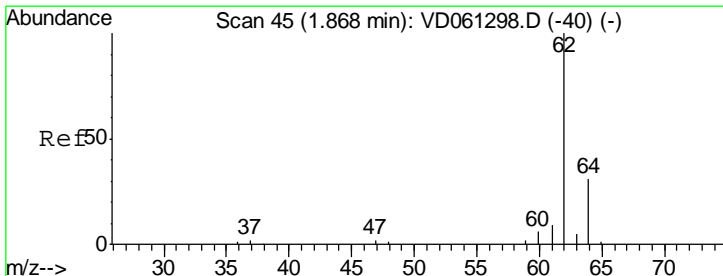
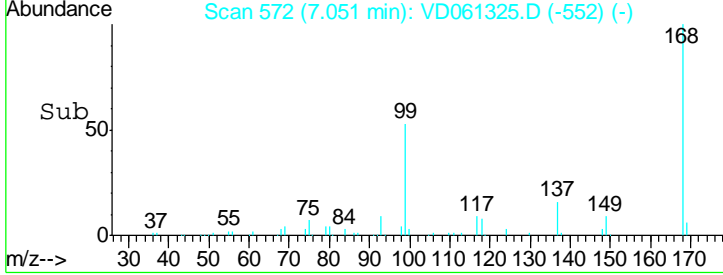
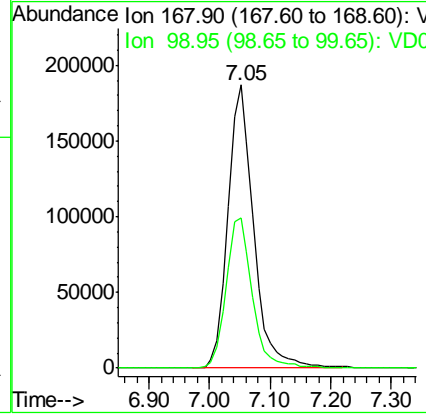
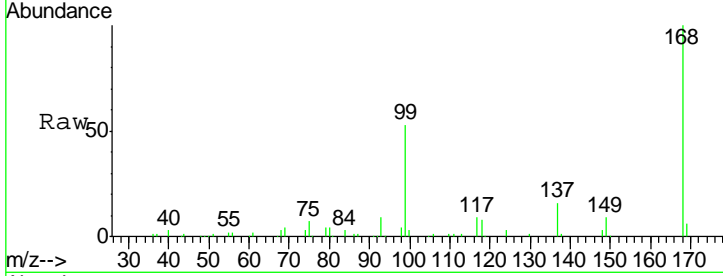




#1  
 Pentafluorobenzene  
 Concen: 50.000 ug/l  
 RT: 7.05 min Scan# 572  
 Delta R.T. -0.00 min  
 Lab File: VD061325.D  
 Acq: 26 Mar 2019 4:18

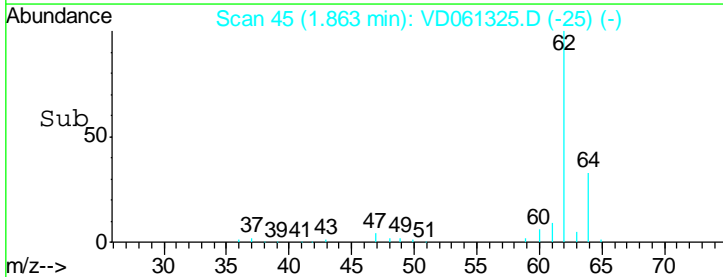
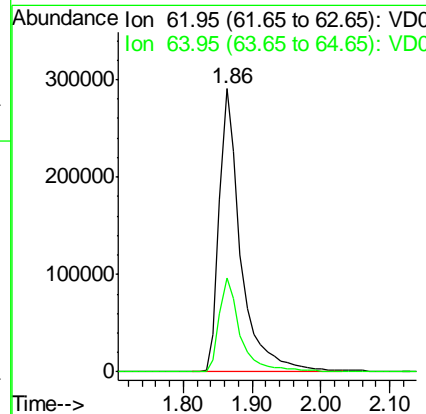
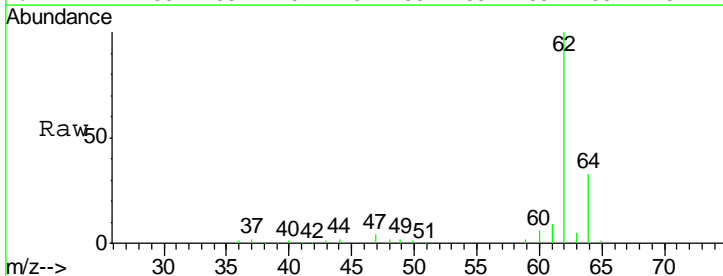
Instrument : MSVOA\_D  
 ClientSampleId : WP022SB437-190318-(21-23)

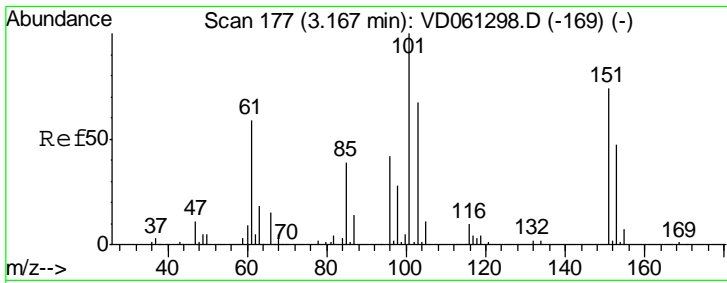
Tgt Ion: 168 Resp: 551529  
 Ion Ratio Lower Upper  
 168 100  
 99 53.2 45.8 68.8



#4  
 Vinyl Chloride  
 Concen: 154.672 ug/l  
 RT: 1.86 min Scan# 45  
 Delta R.T. -0.00 min  
 Lab File: VD061325.D  
 Acq: 26 Mar 2019 4:18

Tgt Ion: 62 Resp: 636161  
 Ion Ratio Lower Upper  
 62 100  
 64 33.2 25.1 37.7

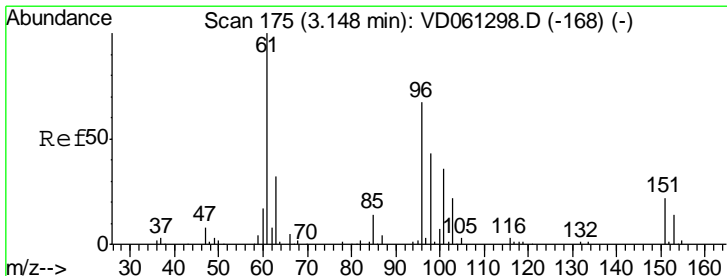
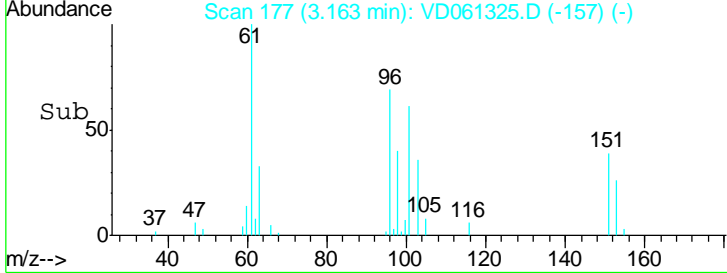
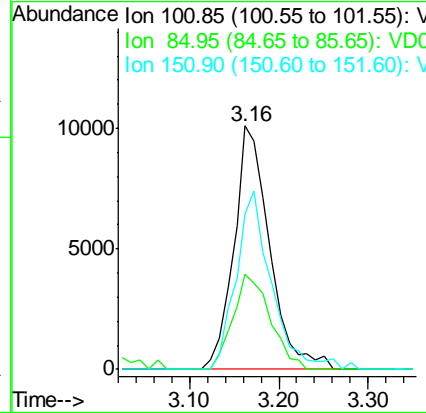
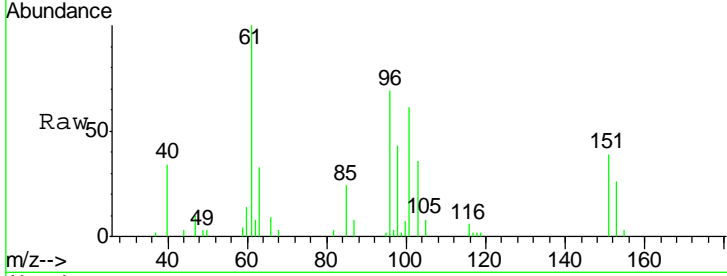




#9  
 1,1,2-Trichlorotrifluoroethane  
 Concen: 4.561 ug/l  
 RT: 3.16 min Scan# 177  
 Delta R.T. -0.00 min  
 Lab File: VD061325.D  
 Acq: 26 Mar 2019 4:18

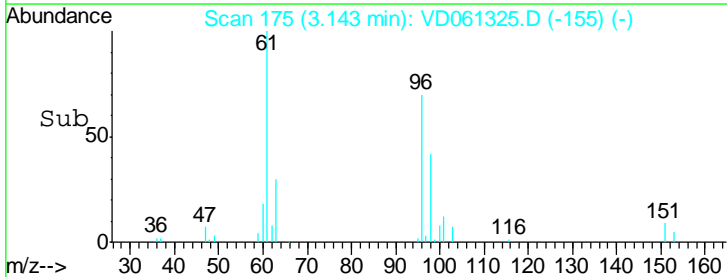
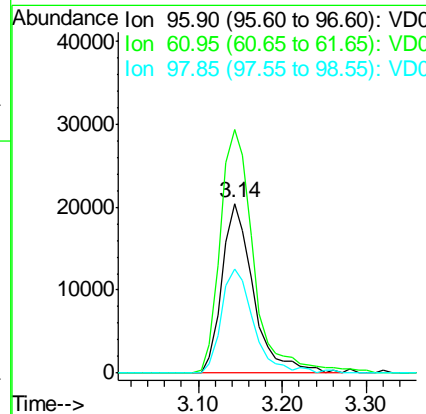
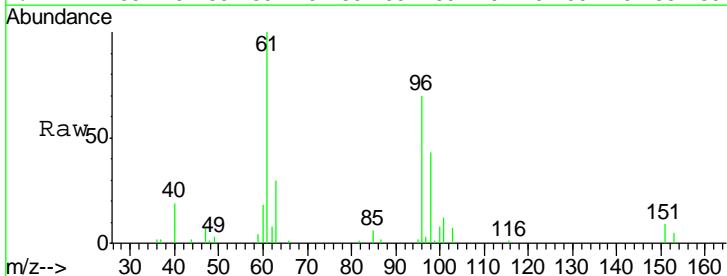
Instrument : MSVOA\_D  
 ClientSampled : WP022SB437-190318-(21-23)

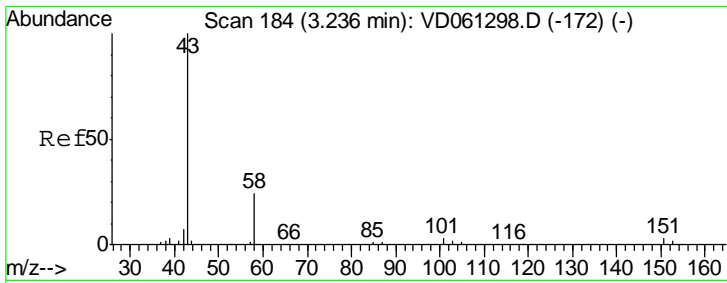
Tgt Ion	Resp	Lower	Upper
101	28223		
85	39.0	31.6	47.4
151	64.0	59.3	88.9



#12  
 1,1-Dichloroethene  
 Concen: 9.940 ug/l  
 RT: 3.14 min Scan# 175  
 Delta R.T. -0.00 min  
 Lab File: VD061325.D  
 Acq: 26 Mar 2019 4:18

Tgt Ion	Resp	Lower	Upper
96	52929		
61	143.5	120.2	180.2
98	61.4	52.2	78.4

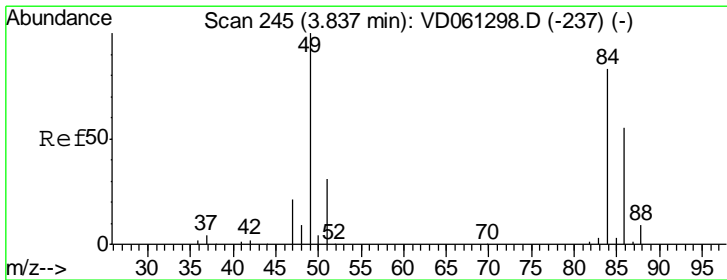
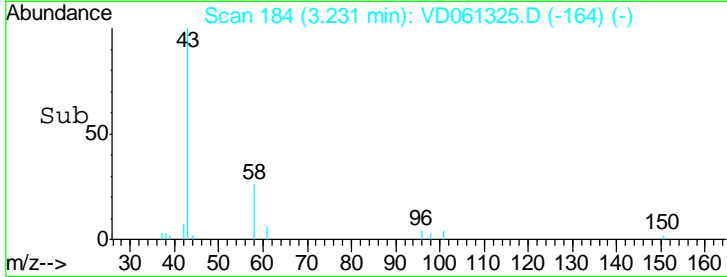
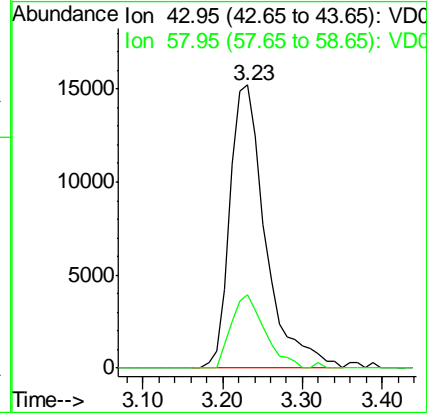
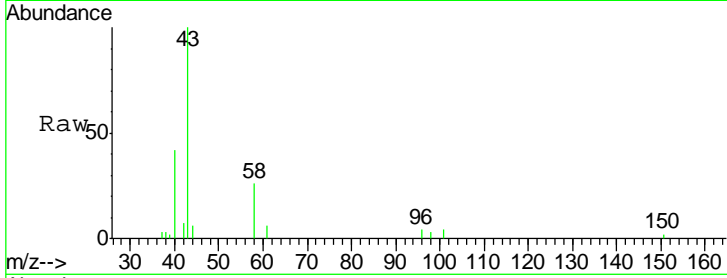




#16  
 Acetone  
 Concen: 41.833 ug/l  
 RT: 3.23 min Scan# 184  
 Delta R.T. -0.00 min  
 Lab File: VD061325.D  
 Acq: 26 Mar 2019 4:18

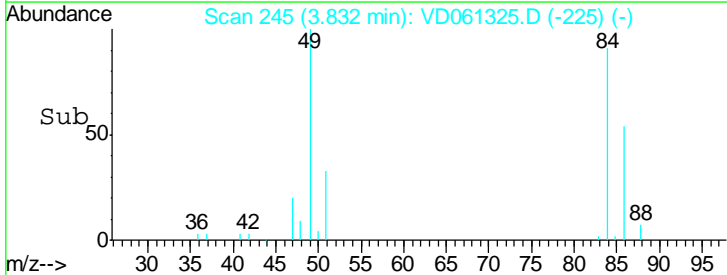
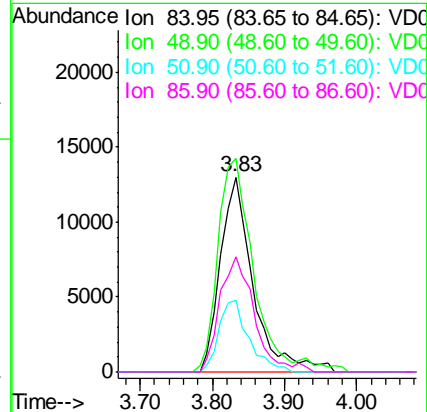
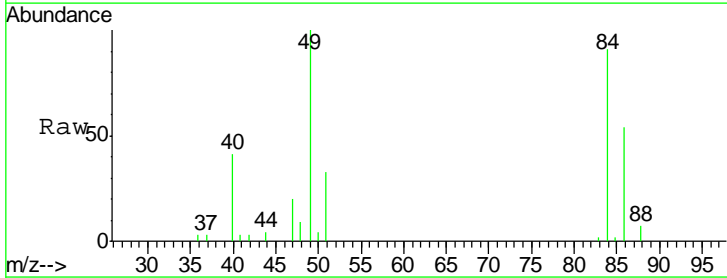
Instrument :  
 MSVOA\_D  
 ClientSampleId :  
 WP022SB437-190318-(21-23)

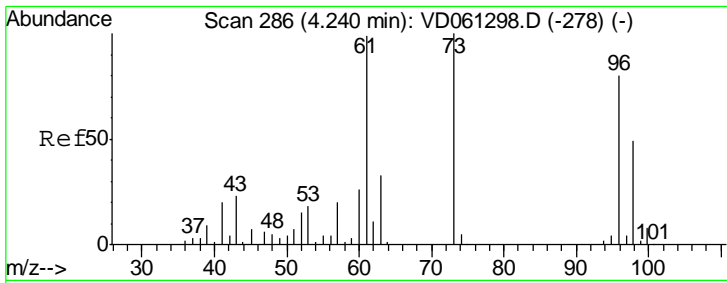
Tgt Ion	Resp	Lower	Upper
43	100		
58	26.1	19.4	29.0



#20  
 Methylene Chloride  
 Concen: 6.302 ug/l  
 RT: 3.83 min Scan# 245  
 Delta R.T. -0.00 min  
 Lab File: VD061325.D  
 Acq: 26 Mar 2019 4:18

Tgt Ion	Resp	Lower	Upper
84	100		
49	109.5	96.8	145.2
51	36.5	29.9	44.9
86	58.8	53.1	79.7

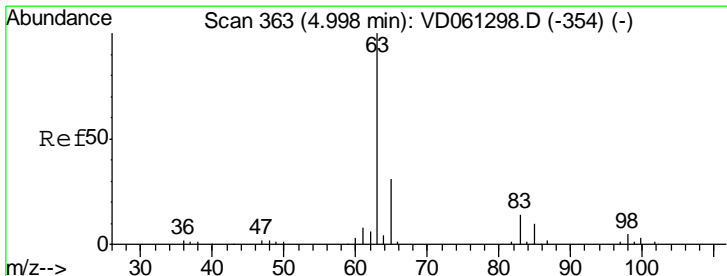
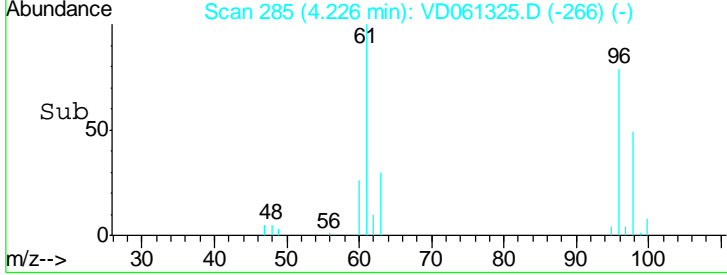
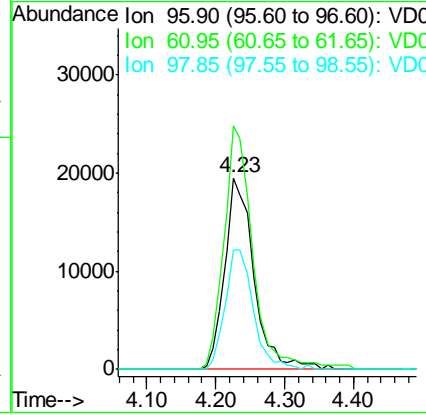
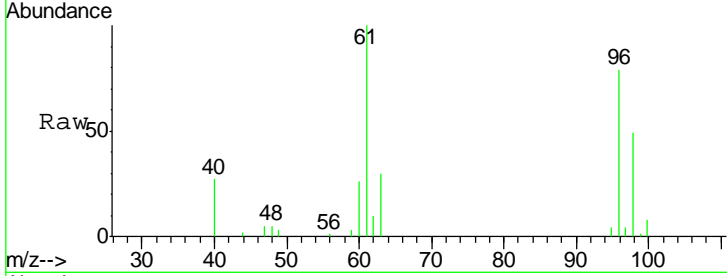




#21  
 trans-1,2-Dichloroethene  
 Concen: 9.653 ug/l  
 RT: 4.23 min Scan# 285  
 Delta R.T. -0.01 min  
 Lab File: VD061325.D  
 Acq: 26 Mar 2019 4:18

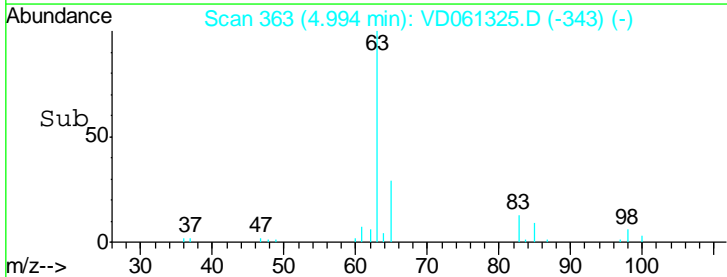
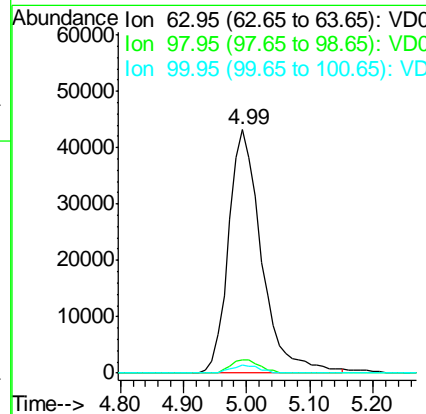
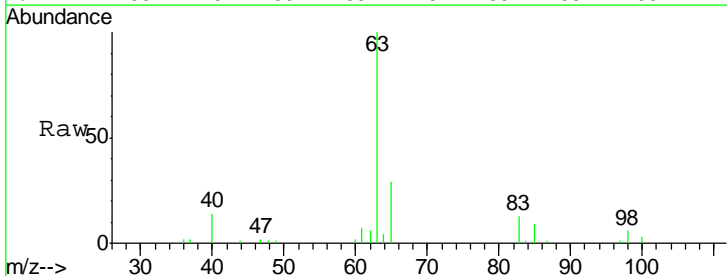
Instrument : MSVOA\_D  
 ClientSampleId : WP022SB437-190318-(21-23)

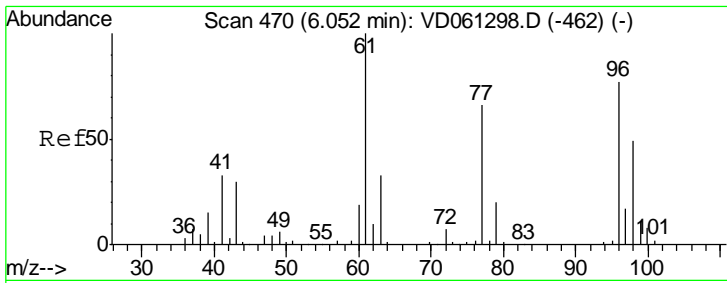
Tgt Ion	Resp	Lower	Upper
96	57500		
Ion Ratio			
96	100		
61	127.0	99.2	148.8
98	62.3	49.2	73.8



#24  
 1,1-Dichloroethane  
 Concen: 16.911 ug/l  
 RT: 4.99 min Scan# 363  
 Delta R.T. -0.00 min  
 Lab File: VD061325.D  
 Acq: 26 Mar 2019 4:18

Tgt Ion	Resp	Lower	Upper
63	156808		
Ion Ratio			
63	100		
98	5.7	2.8	8.3
100	3.5	1.6	4.8

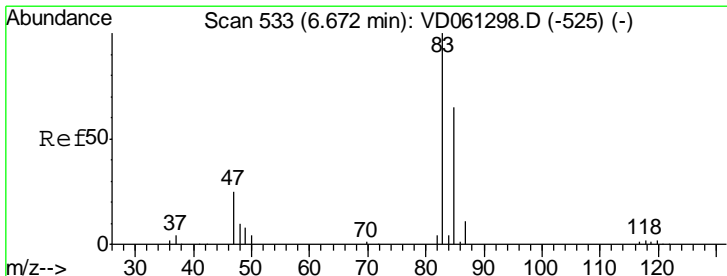
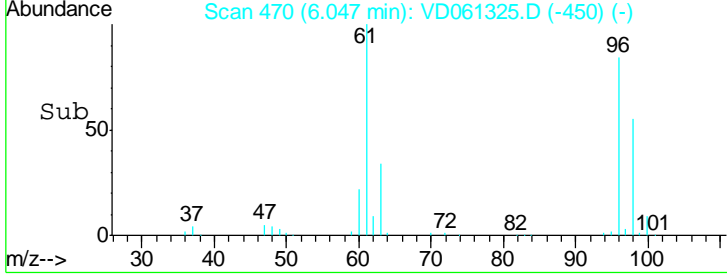
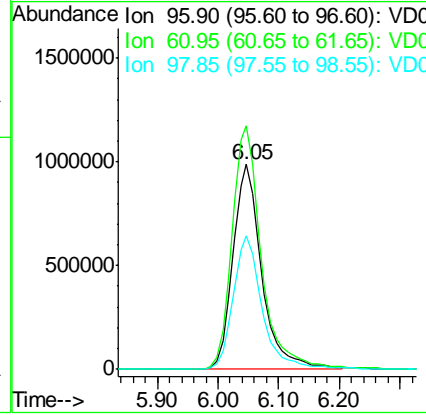
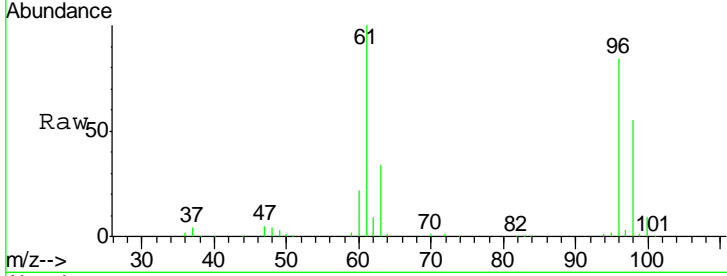




#27  
 cis-1,2-Dichloroethene  
 Concen: 509.591 ug/l  
 RT: 6.05 min Scan# 470  
 Delta R.T. -0.00 min  
 Lab File: VD061325.D  
 Acq: 26 Mar 2019 4:18

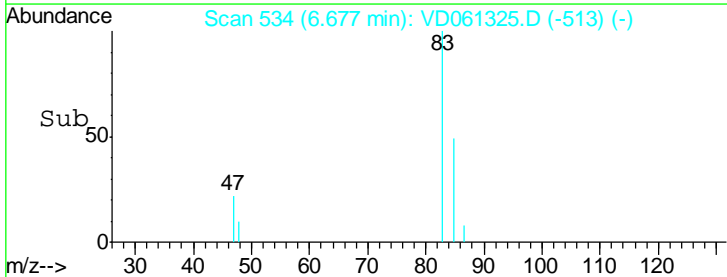
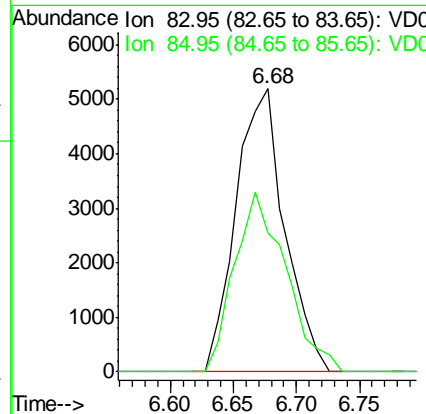
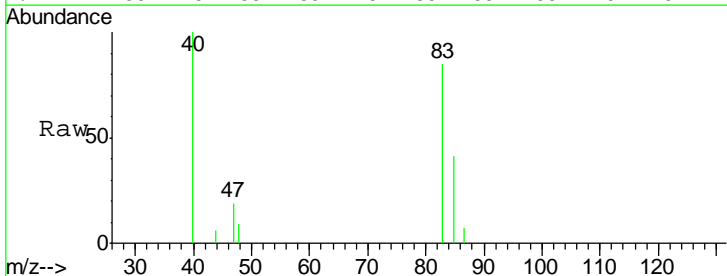
Instrument : MSVOA\_D  
 ClientSampleId : WP022SB437-190318-(21-23)

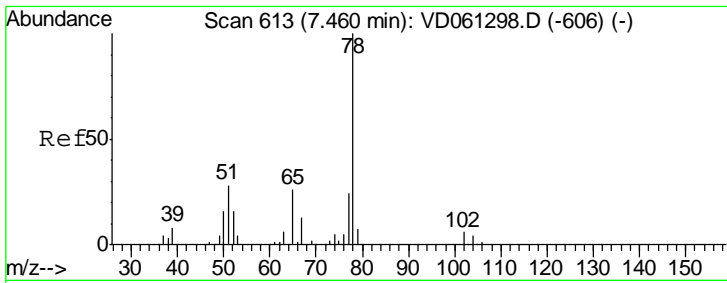
Tgt Ion	Resp	Lower	Upper
96	3266606		
Ion Ratio			
96	100		
61	118.7	0.0	261.0
98	65.3	0.0	127.6



#30  
 Chloroform  
 Concen: 1.405 ug/l  
 RT: 6.68 min Scan# 534  
 Delta R.T. 0.00 min  
 Lab File: VD061325.D  
 Acq: 26 Mar 2019 4:18

Tgt Ion	Resp	Lower	Upper
83	13886		
Ion Ratio			
83	100		
85	49.0	52.2	78.2#

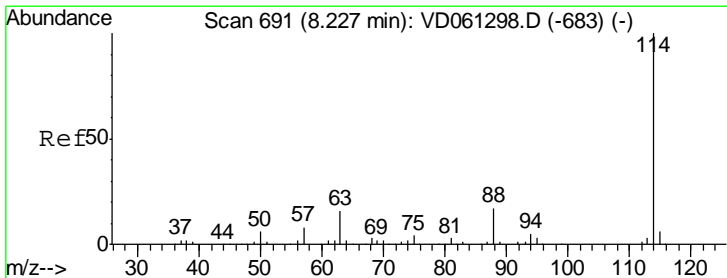
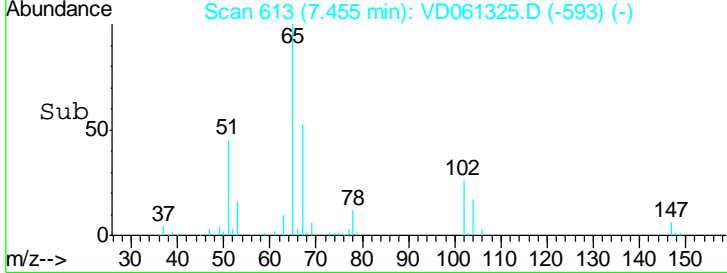
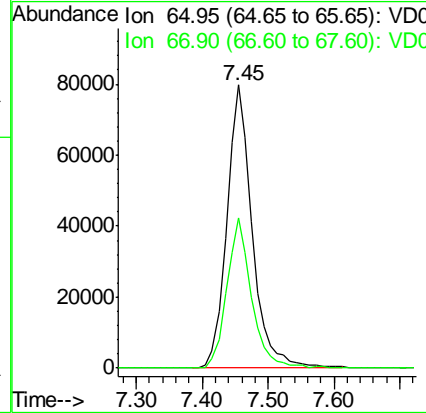
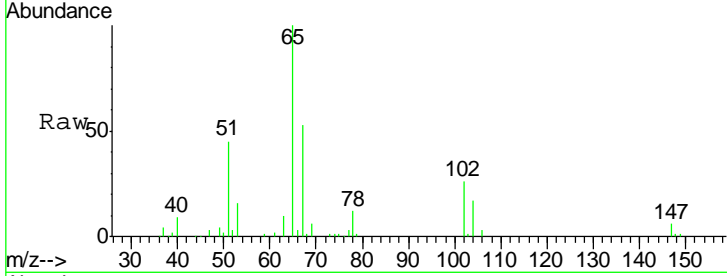




#33  
 1,2-Dichloroethane-d4  
 Concen: N.D. ug/l  
 RT: 7.45 min Scan# 613  
 Delta R.T. -0.00 min  
 Lab File: VD061325.D  
 Acq: 26 Mar 2019 4:18

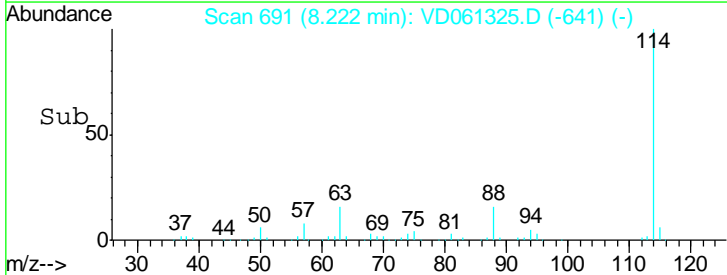
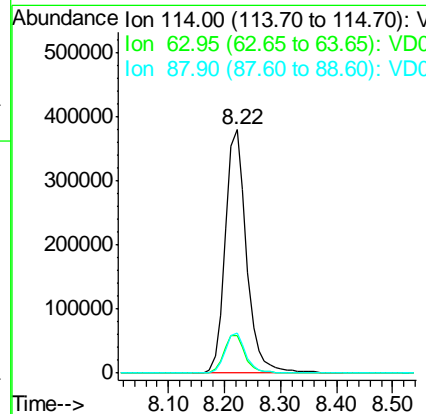
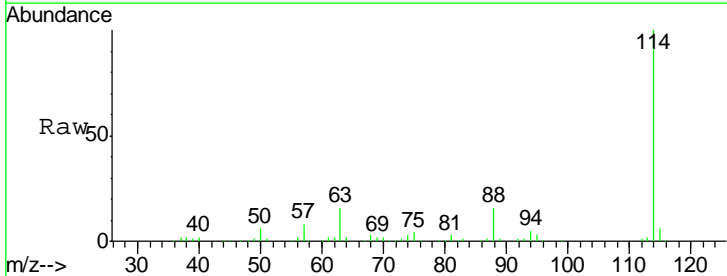
Instrument :  
 MSVOA\_D  
 ClientSampleId :  
 WP022SB437-190318-(21-23)

Tgt Ion	Resp	Lower	Upper
65	100		
67	53.1	0.0	100.8

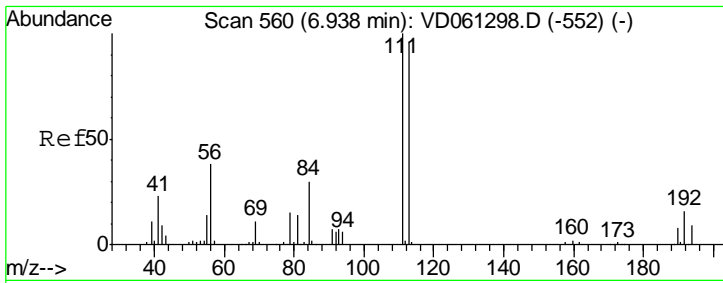


#34  
 1,4-Difluorobenzene  
 Concen: 50.000 ug/l  
 RT: 8.22 min Scan# 691  
 Delta R.T. -0.00 min  
 Lab File: VD061325.D  
 Acq: 26 Mar 2019 4:18

Tgt Ion	Resp	Lower	Upper
114	100		
63	15.7	0.0	31.4
88	16.4	0.0	33.2



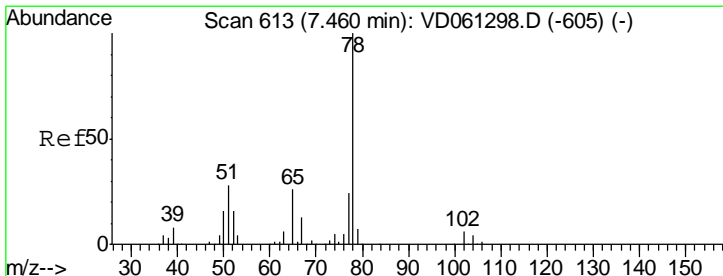
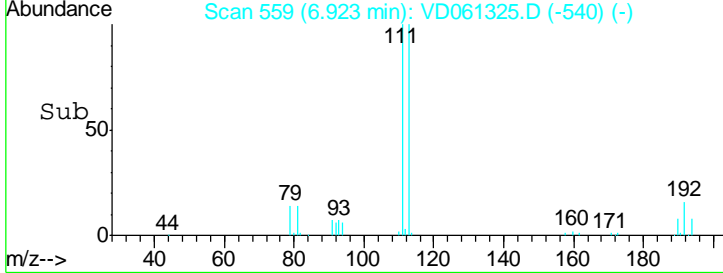
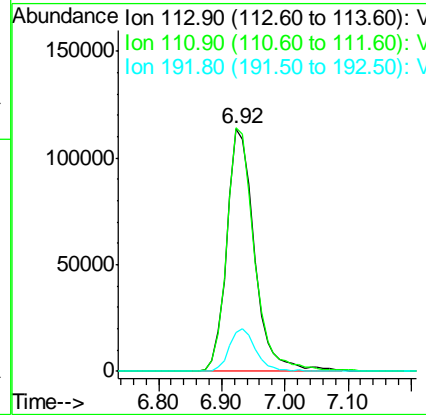
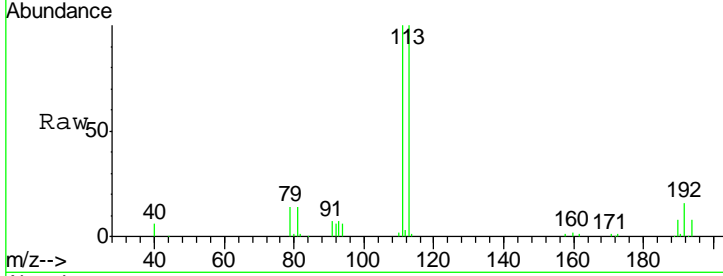




#35  
 Dibromofluoromethane  
 Concen: 50.000 ug/l  
 RT: 6.92 min Scan# 559  
 Delta R.T. -0.01 min  
 Lab File: VD061325.D  
 Acq: 26 Mar 2019 4:18

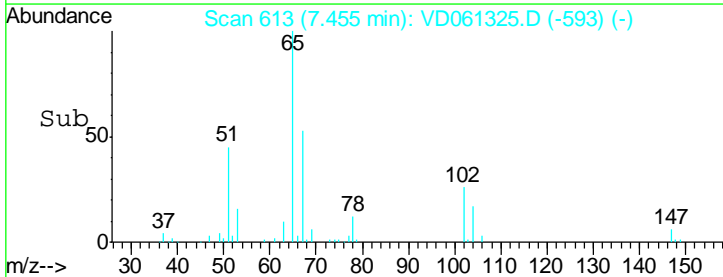
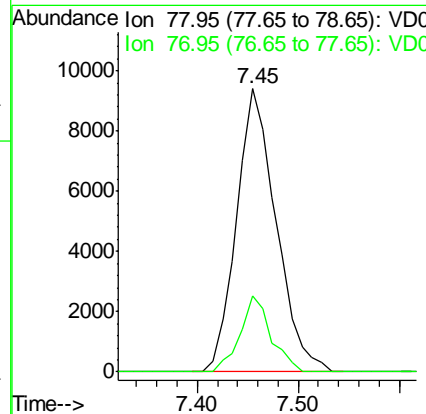
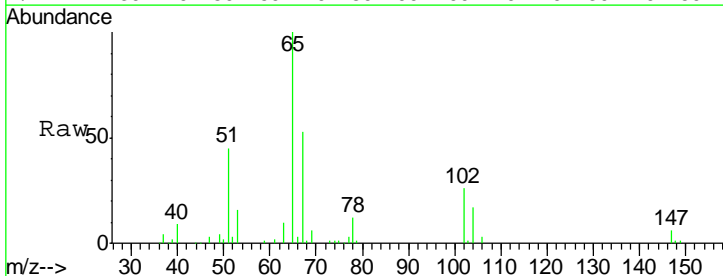
Instrument : MSVOA\_D  
 ClientSampleId : WP022SB437-190318-(21-23)

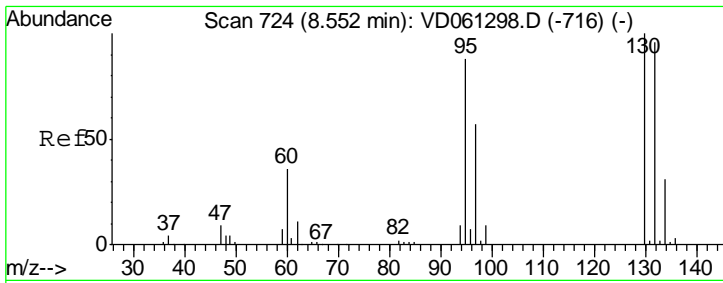
Tgt Ion	Resp	Lower	Upper
113	100		
111	100.4	83.7	125.5
192	15.9	13.4	20.0



#40  
 Benzene  
 Concen: 1.248 ug/l  
 RT: 7.45 min Scan# 613  
 Delta R.T. -0.00 min  
 Lab File: VD061325.D  
 Acq: 26 Mar 2019 4:18

Tgt Ion	Resp	Lower	Upper
78	100		
77	26.9	18.8	28.2

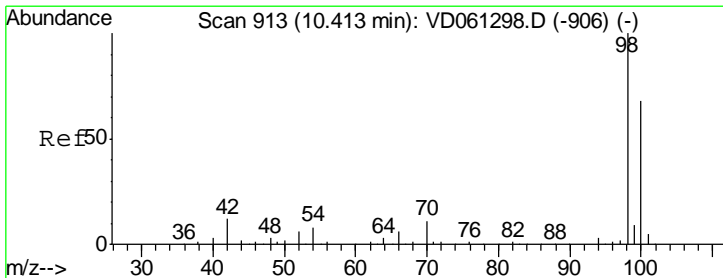
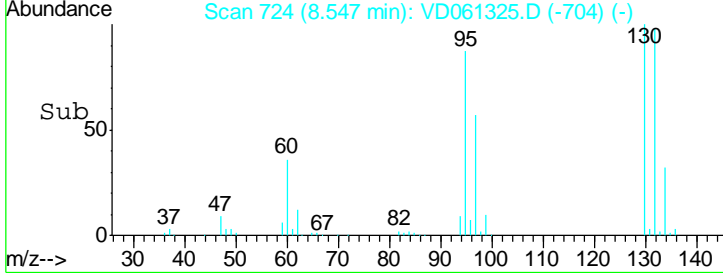
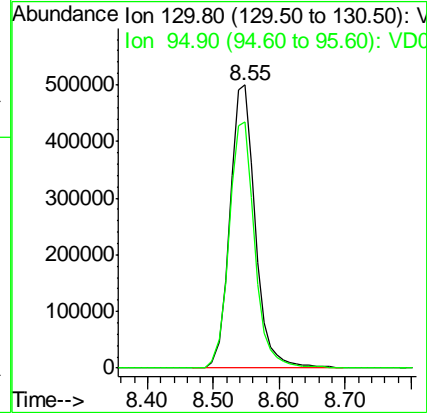
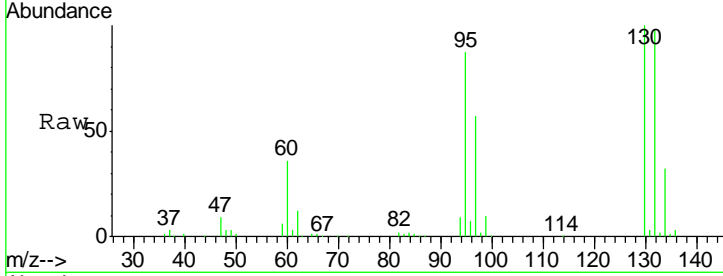




#44  
 Trichloroethene  
 Concen: 182.236 ug/l  
 RT: 8.55 min Scan# 724  
 Delta R.T. -0.00 min  
 Lab File: VD061325.D  
 Acq: 26 Mar 2019 4:18

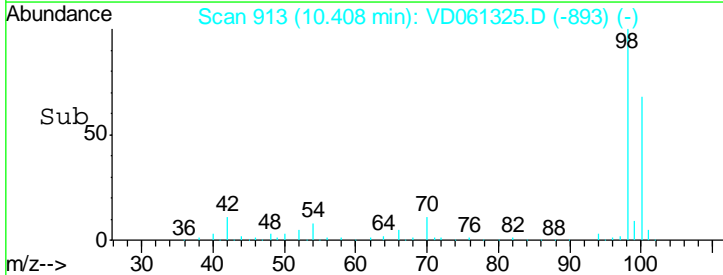
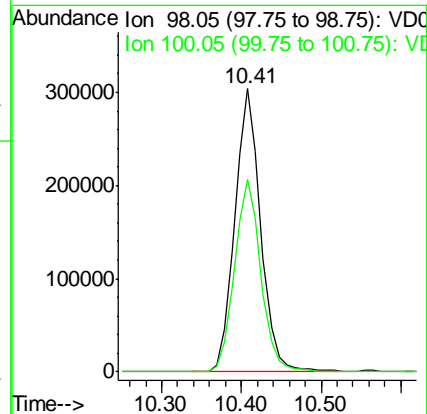
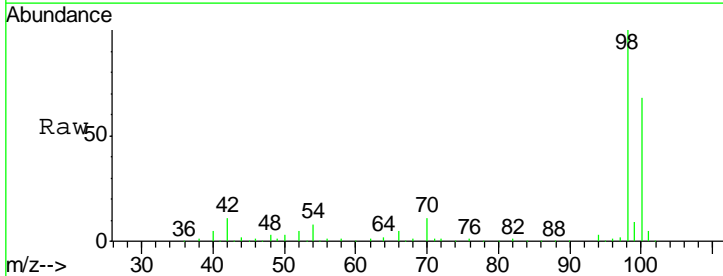
Instrument :  
 MSVOA\_D  
 ClientSampled :  
 WP022SB437-190318-(21-23)

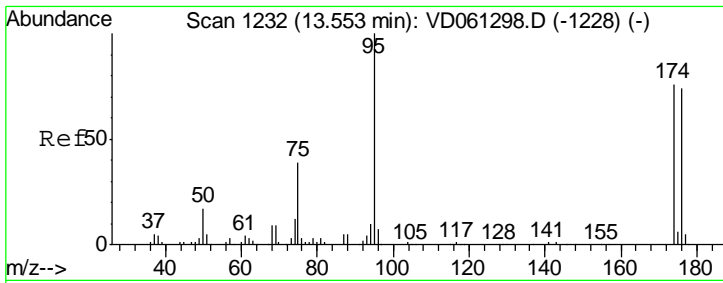
Tgt Ion:130 Resp: 1348337  
 Ion Ratio Lower Upper  
 130 100  
 95 87.1 0.0 175.0



#50  
 Toluene-d8  
 Concen: N.D. ug/l  
 RT: 10.41 min Scan# 913  
 Delta R.T. -0.00 min  
 Lab File: VD061325.D  
 Acq: 26 Mar 2019 4:18

Tgt Ion: 98 Resp: 689105  
 Ion Ratio Lower Upper  
 98 100  
 100 68.1 55.4 83.0

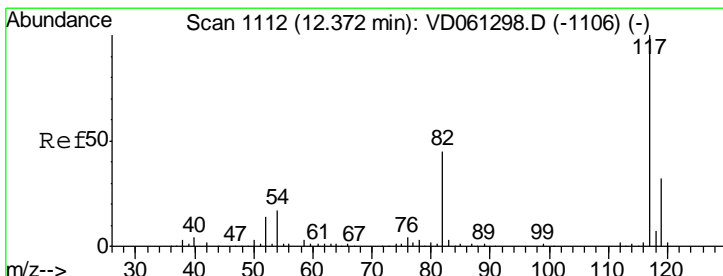
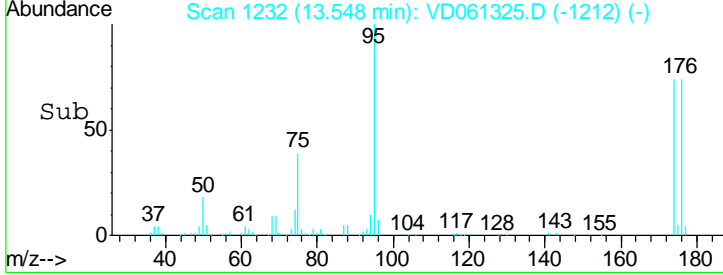
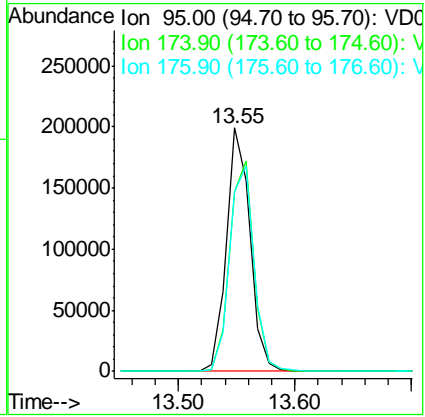
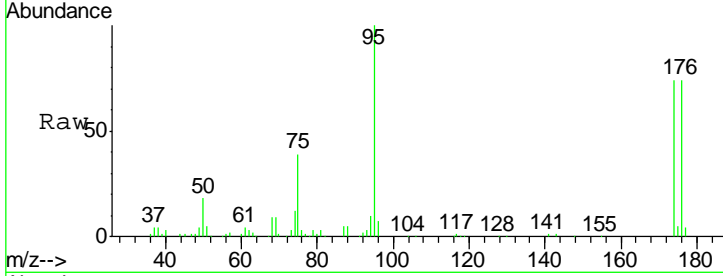




#62  
 4-Bromofluorobenzene  
 Concen: N.D. ug/l  
 RT: 13.55 min Scan# 1232  
 Delta R.T. -0.00 min  
 Lab File: VD061325.D  
 Acq: 26 Mar 2019 4:18

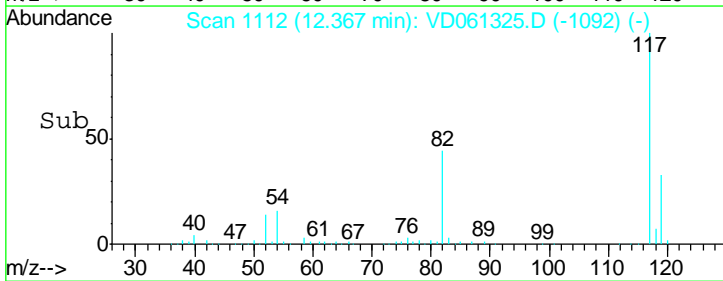
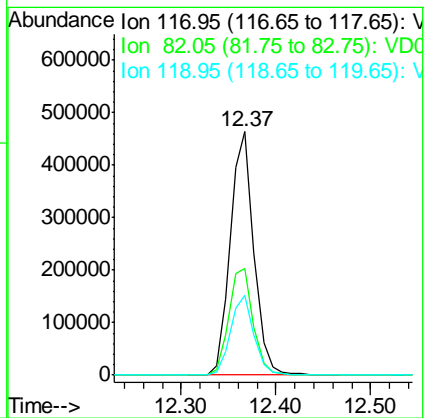
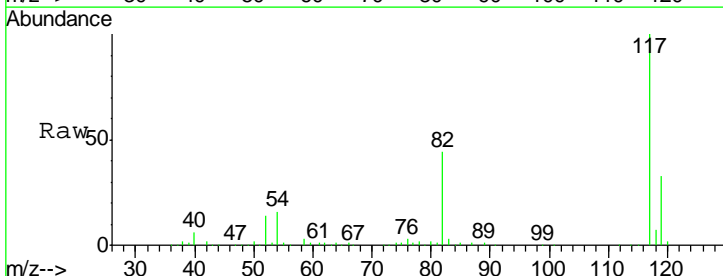
Instrument : MSVOA\_D  
 ClientSampled : WP022SB437-190318-(21-23)

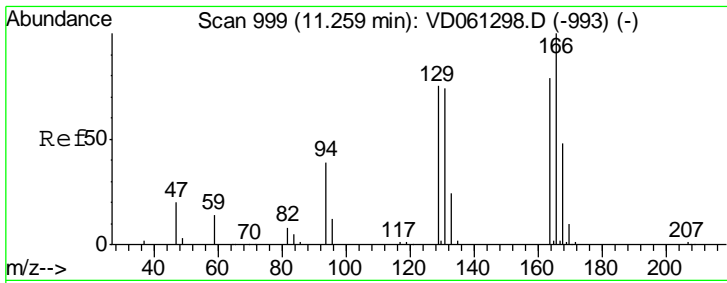
Tgt Ion	Resp	Lower	Upper
95	278628		
174	73.7	0.0	151.8
176	73.9	0.0	148.0



#63  
 Chlorobenzene-d5  
 Concen: 50.000 ug/l  
 RT: 12.37 min Scan# 1112  
 Delta R.T. -0.00 min  
 Lab File: VD061325.D  
 Acq: 26 Mar 2019 4:18

Tgt Ion	Resp	Lower	Upper
117	797684		
82	43.6	35.7	53.5
119	33.0	25.9	38.9

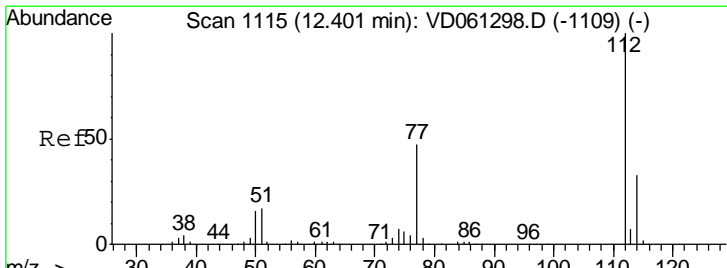
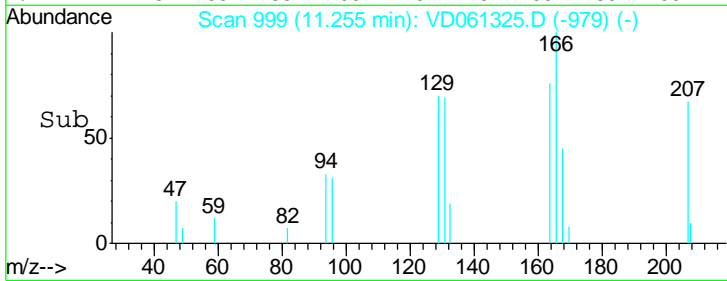
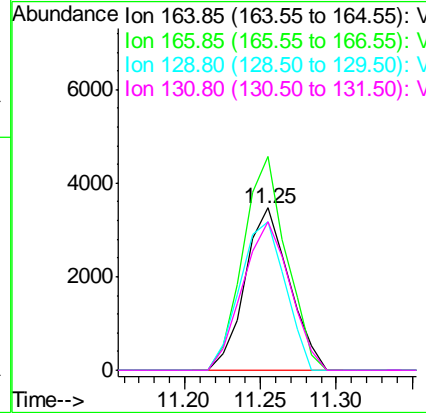
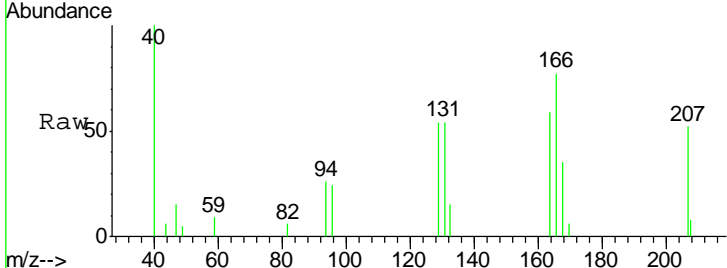




#64  
 Tetrachloroethene  
 Concen: 1.288 ug/l  
 RT: 11.25 min Scan# 999  
 Delta R.T. -0.00 min  
 Lab File: VD061325.D  
 Acq: 26 Mar 2019 4:18

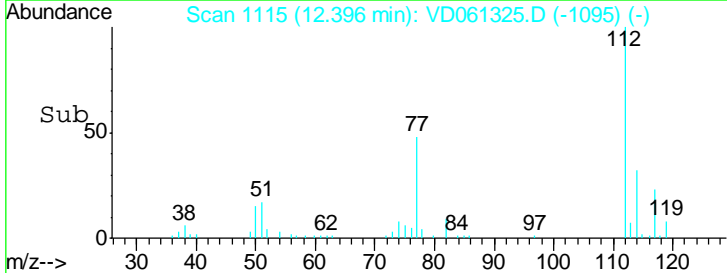
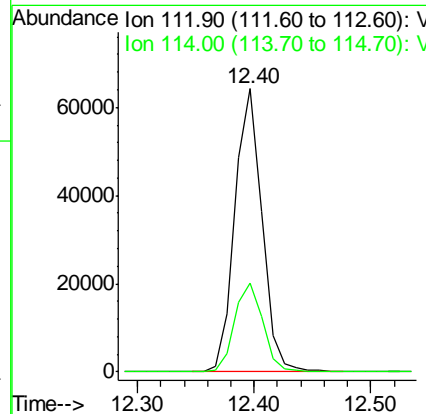
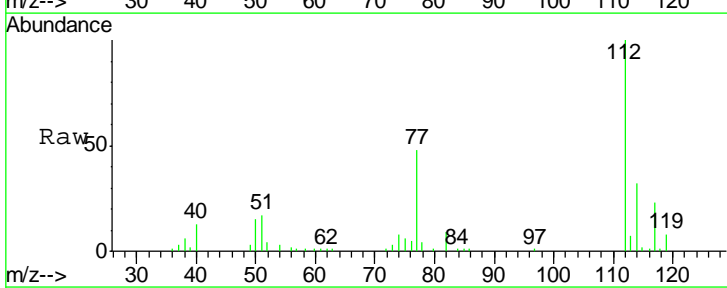
**Instrument :**  
 MSVOA\_D  
**ClientSampleId :**  
 WP022SB437-190318-(21-23)

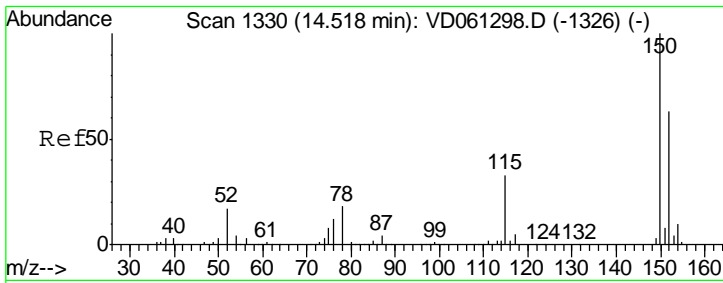
Tgt Ion	Resp	Lower	Upper
164	100		
166	131.5	101.6	152.4
129	91.4	75.9	113.9
131	91.2	75.3	112.9



#65  
 Chlorobenzene  
 Concen: 7.047 ug/l  
 RT: 12.40 min Scan# 1115  
 Delta R.T. -0.00 min  
 Lab File: VD061325.D  
 Acq: 26 Mar 2019 4:18

Tgt Ion	Resp	Lower	Upper
112	100		
114	31.5	26.5	39.7

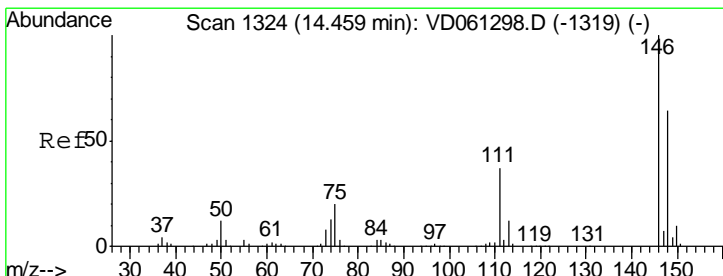
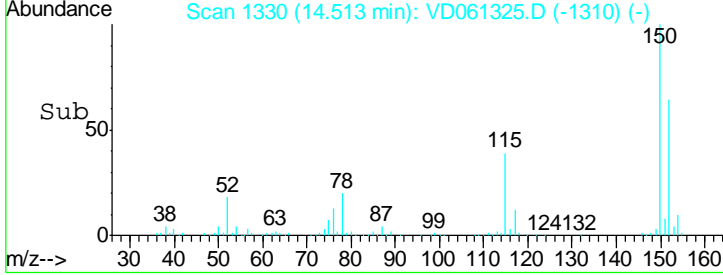
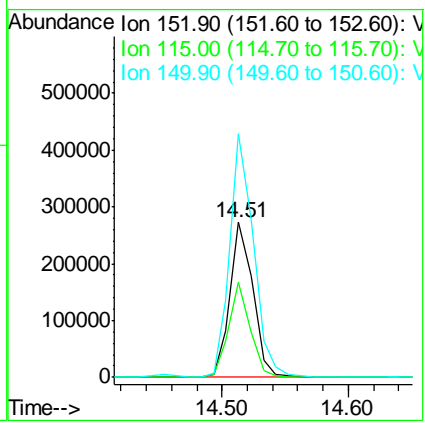
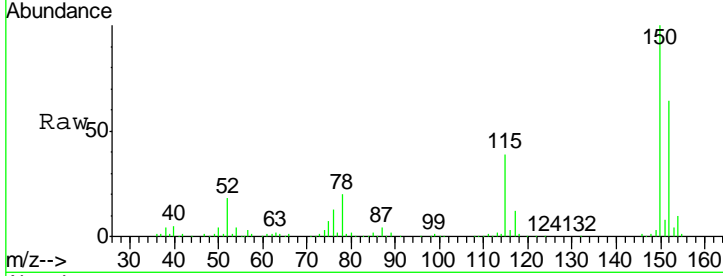




#72  
 1,4-Dichlorobenzene-d4  
 Concen: 50.000 ug/l  
 RT: 14.51 min Scan# 1330  
 Delta R.T. -0.00 min  
 Lab File: VD061325.D  
 Acq: 26 Mar 2019 4:18

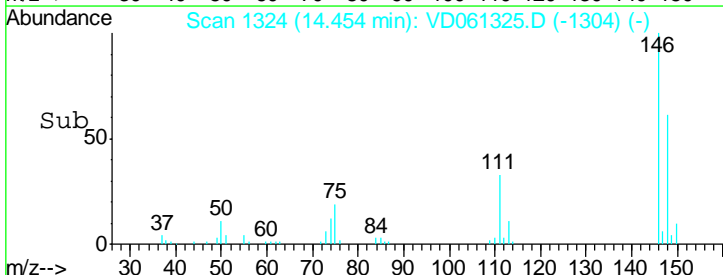
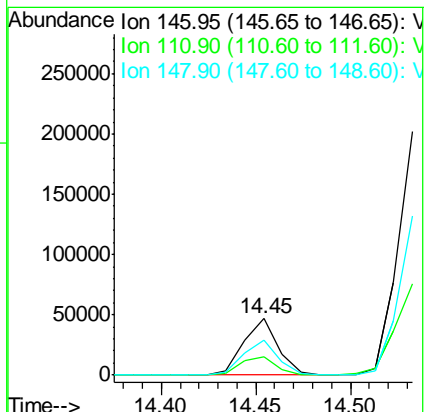
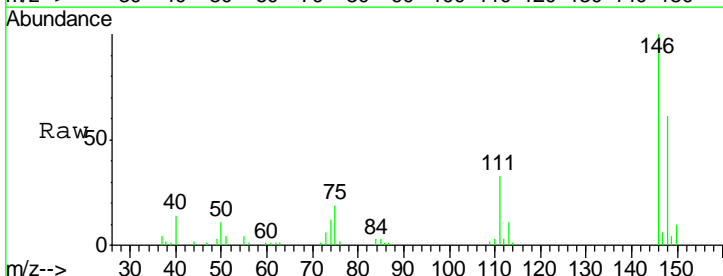
**Instrument :**  
 MSVOA\_D  
**ClientSampled :**  
 WP022SB437-190318-(21-23)

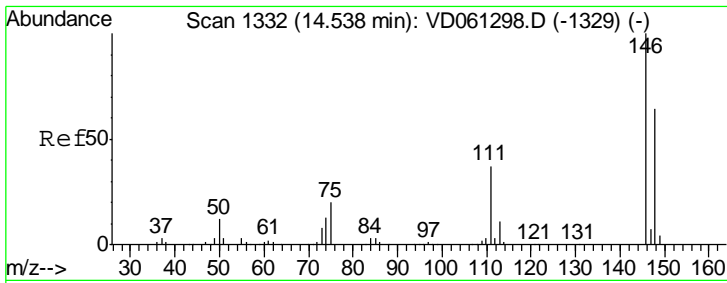
Tgt Ion	Resp	Lower	Upper
152	100		
115	61.1	29.2	87.6
150	156.9	0.0	319.6



#87  
 1,3-Dichlorobenzene  
 Concen: 5.365 ug/l  
 RT: 14.45 min Scan# 1324  
 Delta R.T. -0.00 min  
 Lab File: VD061325.D  
 Acq: 26 Mar 2019 4:18

Tgt Ion	Resp	Lower	Upper
146	100		
111	33.5	18.4	55.0
148	61.3	32.0	96.2

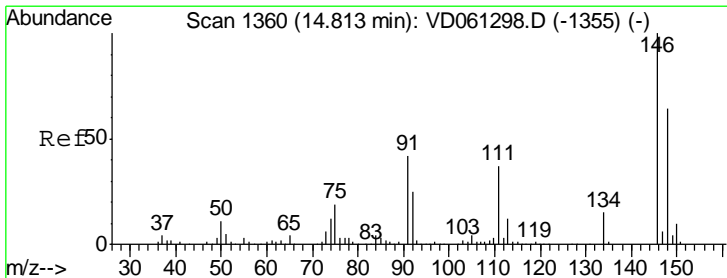
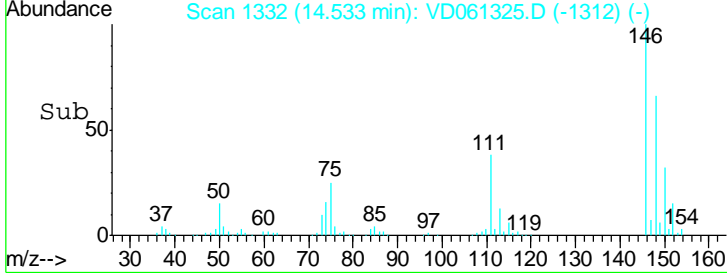
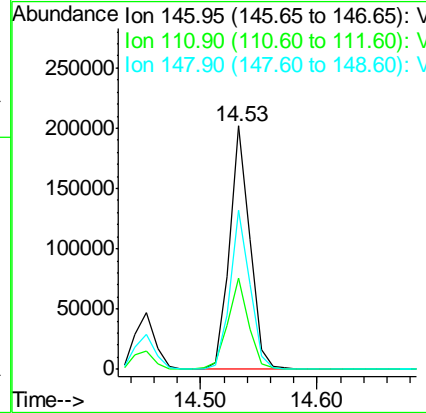
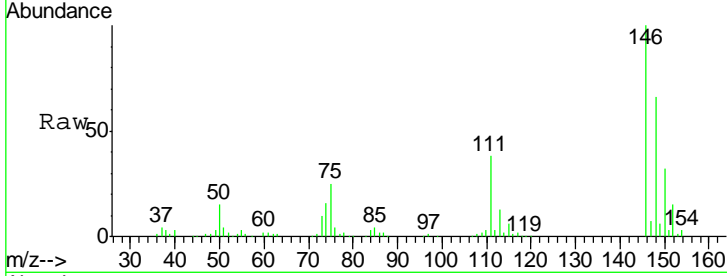




#88  
 1,4-Dichlorobenzene  
 Concen: 22.892 ug/l  
 RT: 14.53 min Scan# 1332  
 Delta R.T. -0.00 min  
 Lab File: VD061325.D  
 Acq: 26 Mar 2019 4:18

Instrument : MSVOA\_D  
 ClientSampled : WP022SB437-190318-(21-23)

Tgt Ion	Resp	Lower	Upper
146	100		
111	37.7	18.6	55.6
148	65.6	31.9	95.5



#91  
 1,2-Dichlorobenzene  
 Concen: 115.300 ug/l  
 RT: 14.81 min Scan# 1360  
 Delta R.T. -0.00 min  
 Lab File: VD061325.D  
 Acq: 26 Mar 2019 4:18

Tgt Ion	Resp	Lower	Upper
146	100		
111	39.6	18.3	54.8
148	64.7	31.9	95.7

