

Data Path : Z:\voasrv\HPCHEM1\MSVOA_D\Data\VD032621\
 Data File : VD068683.D
 Acq On : 26 Mar 2021 14:40
 Operator : VA/SY
 Sample : M1838-01
 Misc : 7.34G/5.00ml/MSVOA_D/SOIL
 ALS Vial : 10 Sample Multiplier: 1

Instrument :
 MSVOA_D
 ClientSampleId :
 PHC-BEAPT-001

Quant Time: Mar 27 00:43:55 2021
 Quant Method : Z:\voasrv\HPCHEM1\MSVOA_D\Method\82D031921S.M
 Quant Title : SW846 8260
 QLast Update : Sat Mar 20 02:00:55 2021
 Response via : Initial Calibration

Compound	R.T.	QIon	Response	Conc	Units	Dev(Min)

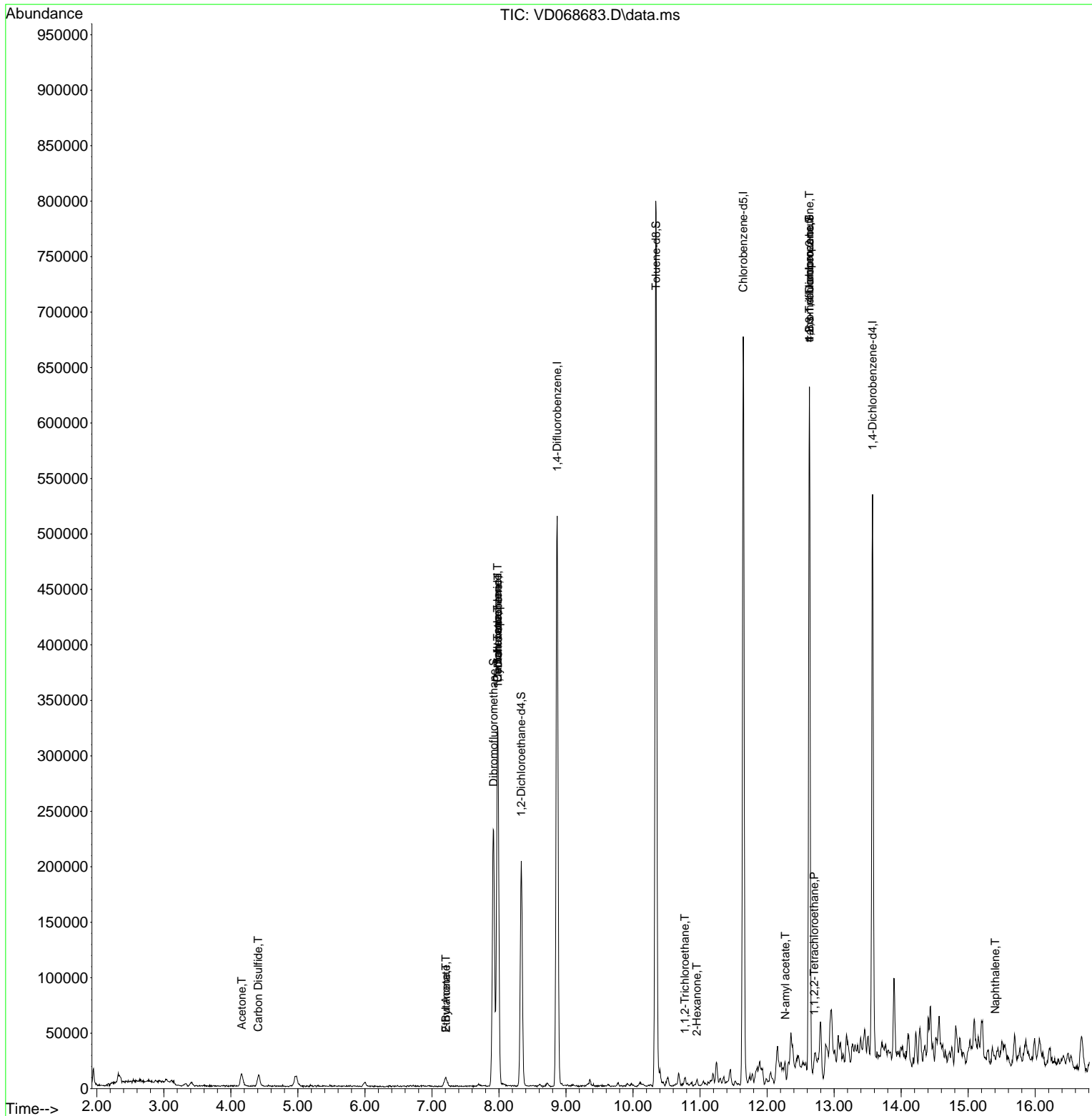
Internal Standards						
1) Pentafluorobenzene	7.979	168	253783	50.00	ug/l	0.00
34) 1,4-Difluorobenzene	8.867	114	476663	50.00	ug/l	0.00
63) Chlorobenzene-d5	11.644	117	407195	50.00	ug/l	0.00
72) 1,4-Dichlorobenzene-d4	13.573	152	139688	50.00	ug/l	0.00
System Monitoring Compounds						
33) 1,2-Dichloroethane-d4	8.332	65	158470	61.93	ug/l	0.00
Spiked Amount	50.000	Range	50 - 163	Recovery	=	123.86%
35) Dibromofluoromethane	7.920	113	170611	57.53	ug/l	0.00
Spiked Amount	50.000	Range	54 - 147	Recovery	=	115.06%
50) Toluene-d8	10.344	98	574074	50.21	ug/l	0.00
Spiked Amount	50.000	Range	49 - 140	Recovery	=	100.42%
62) 4-Bromofluorobenzene	12.632	95	165207	44.56	ug/l	0.00
Spiked Amount	50.000	Range	25 - 144	Recovery	=	89.12%
Target Compounds						
						Qvalue
16) Acetone	4.162	43	20391	65.68	ug/l	94
17) Carbon Disulfide	4.409	76	21026	3.26	ug/l	95
20) Methylene Chloride	4.962	84	8956	Below Cal	#	78
25) 2-Butanone	7.209	43	6517	12.67	ug/l #	72
31) Cyclohexane	7.979	56	6050	1.47	ug/l #	39
36) 1,1-Dichloropropene	7.985	75	19647	4.61	ug/l #	49
37) Ethyl Acetate	7.209	43	6517	4.85	ug/l #	68
38) Carbon Tetrachloride	7.979	117	24944	5.87	ug/l #	17
55) 1,1,2-Trichloroethane	10.773	97	2707	1.14	ug/l #	22
59) 2-Hexanone	10.950	43	2180	2.42	ug/l #	19
74) N-amyl acetate	12.273	43	2372	1.48	ug/l #	70
75) 1,1,2,2-Tetrachloroethane	12.702	83	1715	1.01	ug/l #	55
76) 1,2,3-Trichloropropane	12.632	75	83274	71.62	ug/l #	100
81) trans-1,4-Dichloro-2-b...	12.632	75	83274	162.95	ug/l #	16
95) Naphthalene	15.402	128	5909	1.36	ug/l #	81

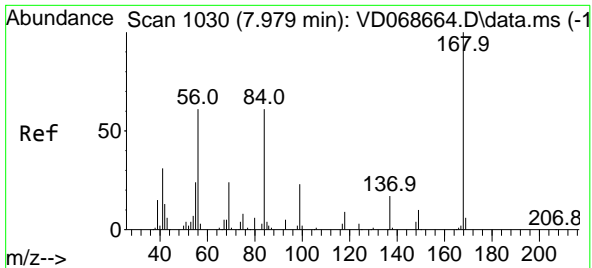
(#) = qualifier out of range (m) = manual integration (+) = signals summed

Data Path : Z:\voasrv\HPCHEM1\MSVOA_D\Data\VD032621\
 Data File : VD068683.D
 Acq On : 26 Mar 2021 14:40
 Operator : VA/SY
 Sample : M1838-01
 Misc : 7.34G/5.00ml/MSVOA_D/SOIL
 ALS Vial : 10 Sample Multiplier: 1

Instrument :
 MSVOA_D
 ClientSampleId :
 PHC-BEAPT-001

Quant Time: Mar 27 00:43:55 2021
 Quant Method : Z:\voasrv\HPCHEM1\MSVOA_D\Method\82D031921S.M
 Quant Title : SW846 8260
 QLast Update : Sat Mar 20 02:00:55 2021
 Response via : Initial Calibration

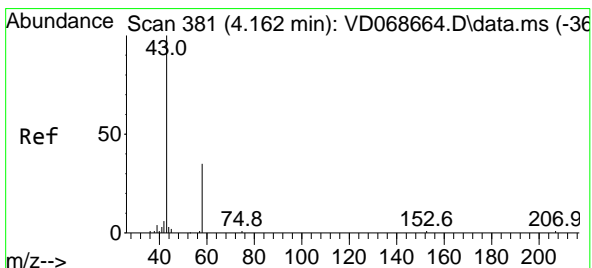
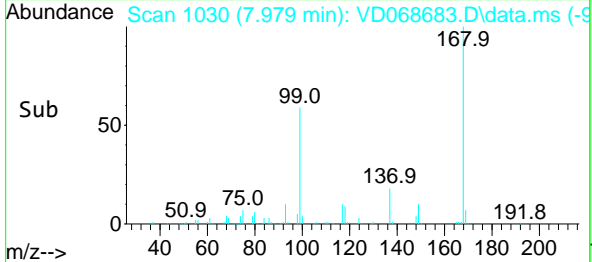
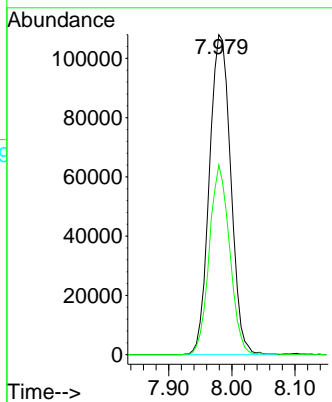
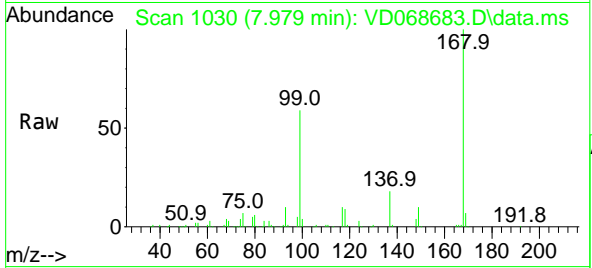




#1
 Pentafluorobenzene
 Concen: 50.00 ug/l
 RT: 7.979 min Scan# 1030
 Delta R.T. 0.000 min
 Lab File: VD068683.D
 Acq: 26 Mar 2021 14:40

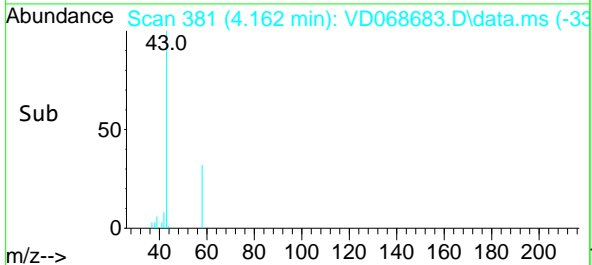
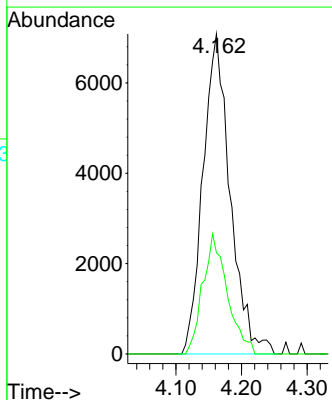
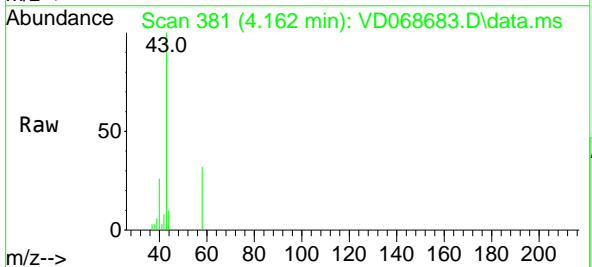
Instrument :
 MSVOA_D
ClientSampled :
 PHC-BEAPT-001

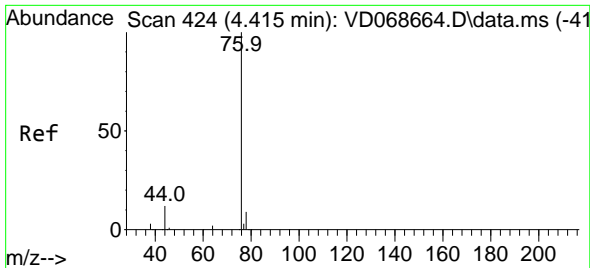
Tgt Ion:168 Resp: 253783
 Ion Ratio Lower Upper
 168 100
 99 59.2 46.2 69.2



#16
 Acetone
 Concen: 65.68 ug/l
 RT: 4.162 min Scan# 381
 Delta R.T. 0.000 min
 Lab File: VD068683.D
 Acq: 26 Mar 2021 14:40

Tgt Ion: 43 Resp: 20391
 Ion Ratio Lower Upper
 43 100
 58 31.7 28.0 42.0

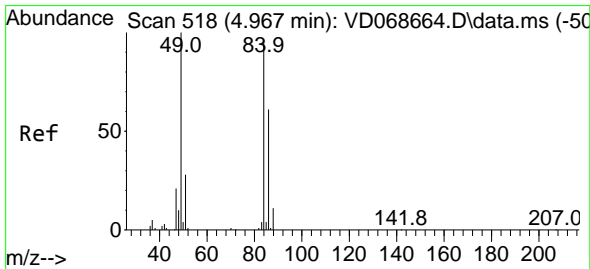
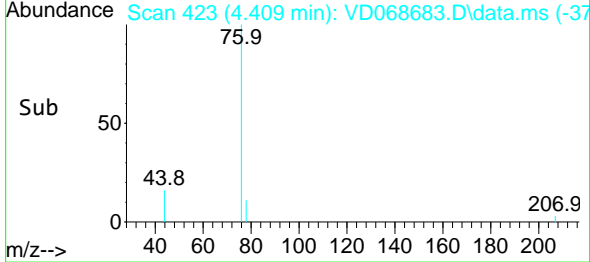
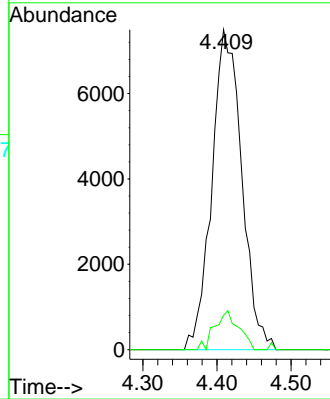
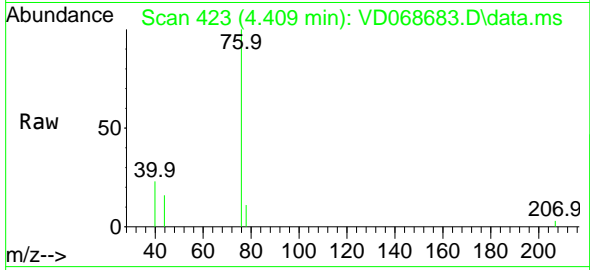




#17
 Carbon Disulfide
 Concen: 3.26 ug/l
 RT: 4.409 min Scan# 423
 Delta R.T. -0.006 min
 Lab File: VD068683.D
 Acq: 26 Mar 2021 14:40

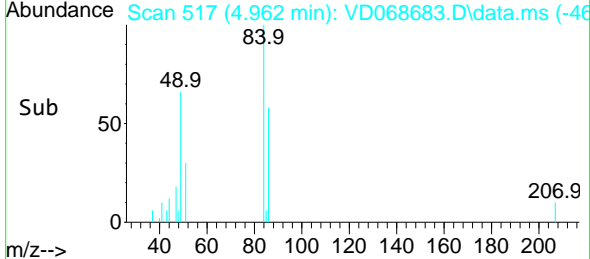
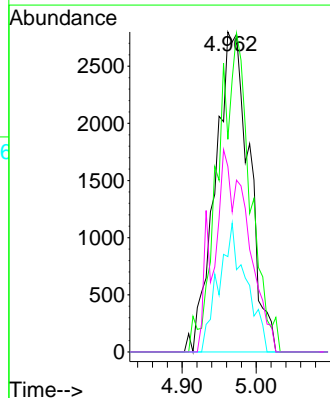
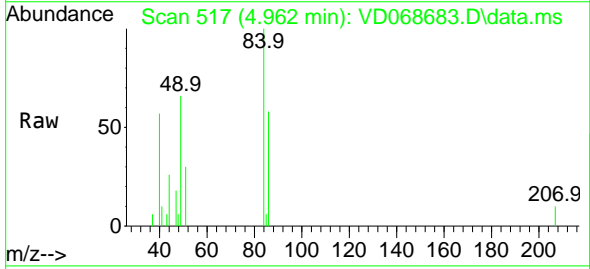
Instrument :
 MSVOA_D
 ClientSampled :
 PHC-BEAPT-001

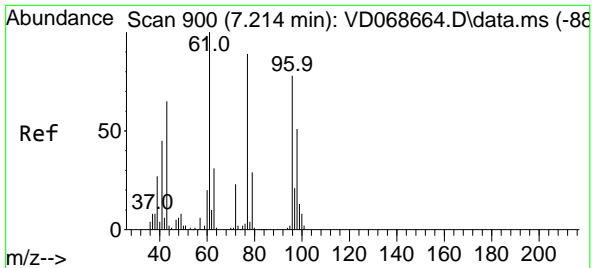
Tgt Ion: 76 Resp: 21026
 Ion Ratio Lower Upper
 76 100
 78 10.8 7.3 10.9



#20
 Methylene Chloride
 Concen: Below Cal
 RT: 4.962 min Scan# 517
 Delta R.T. -0.005 min
 Lab File: VD068683.D
 Acq: 26 Mar 2021 14:40

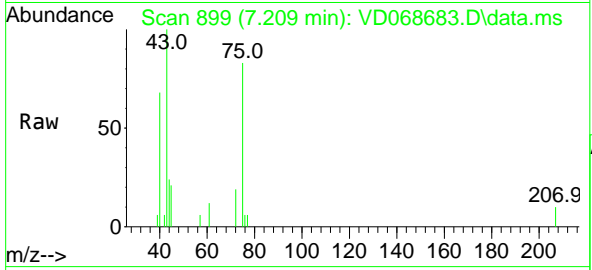
Tgt Ion: 84 Resp: 8956
 Ion Ratio Lower Upper
 84 100
 49 66.4 83.4 125.0#
 51 29.8 23.4 35.2
 86 58.0 51.0 76.4



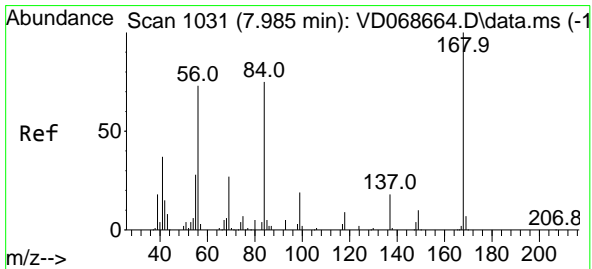
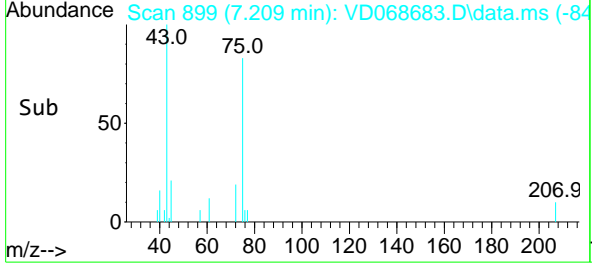
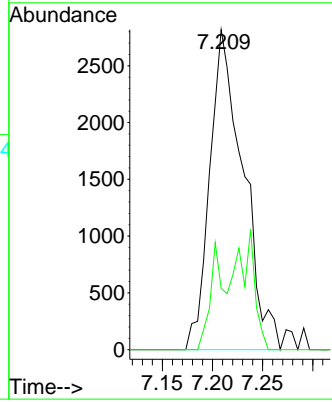


#25
 2-Butanone
 Concen: 12.67 ug/l
 RT: 7.209 min Scan# 899
 Delta R.T. -0.006 min
 Lab File: VD068683.D
 Acq: 26 Mar 2021 14:40

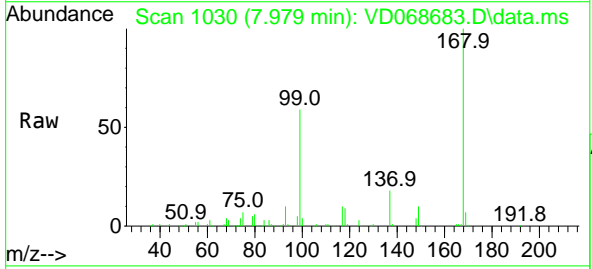
Instrument :
 MSVOA_D
ClientSampled :
 PHC-BEAPT-001



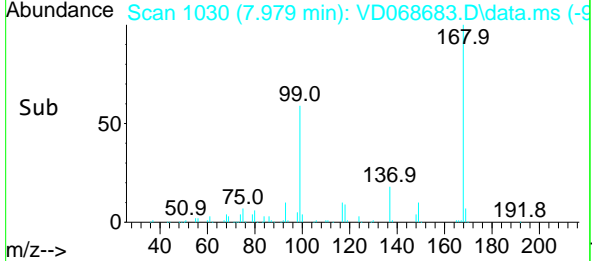
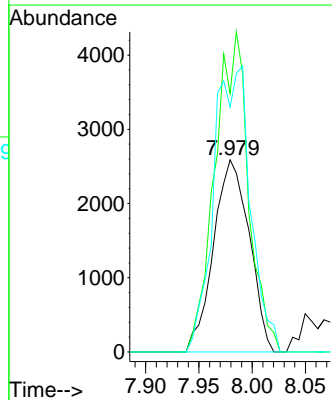
Tgt Ion: 43 Resp: 6517
 Ion Ratio Lower Upper
 43 100
 72 19.1 28.6 43.0#

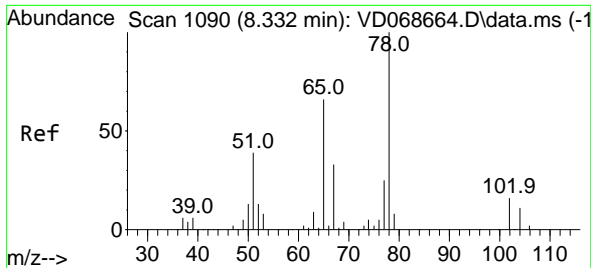


#31
 Cyclohexane
 Concen: 1.47 ug/l
 RT: 7.979 min Scan# 1030
 Delta R.T. -0.006 min
 Lab File: VD068683.D
 Acq: 26 Mar 2021 14:40



Tgt Ion: 56 Resp: 6050
 Ion Ratio Lower Upper
 56 100
 69 134.6 30.0 45.0#
 84 127.4 82.0 123.0#

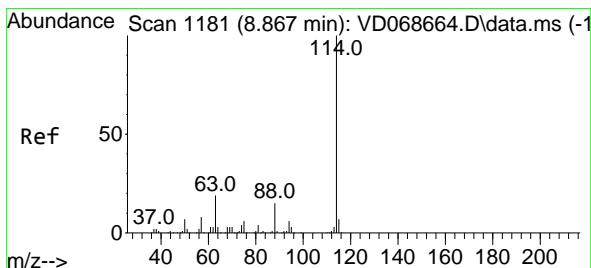
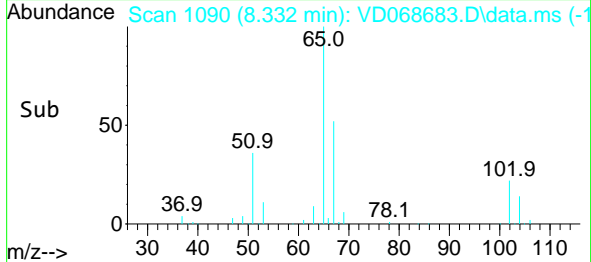
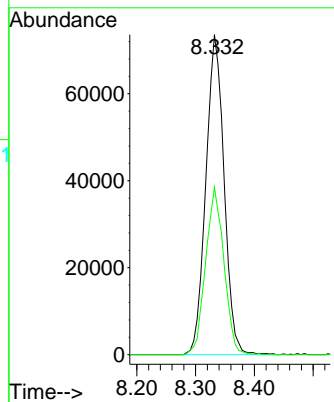
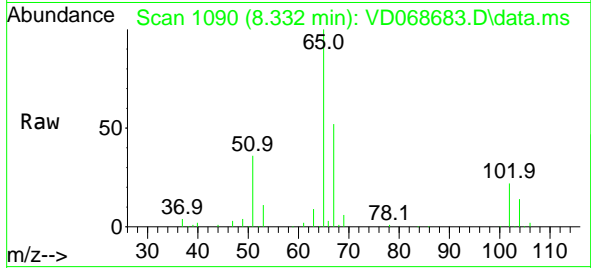




#33
 1,2-Dichloroethane-d4
 Concen: 61.93 ug/l
 RT: 8.332 min Scan# 1090
 Delta R.T. 0.000 min
 Lab File: VD068683.D
 Acq: 26 Mar 2021 14:40

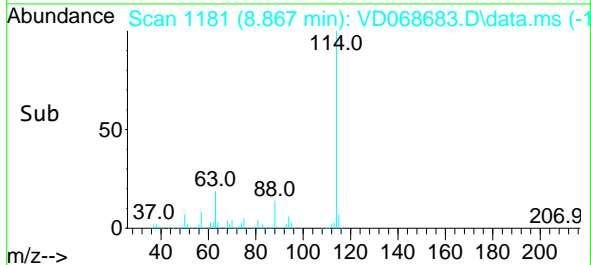
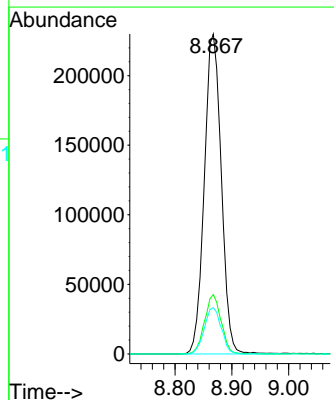
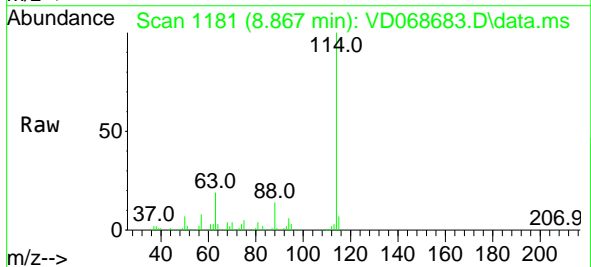
Instrument :
 MSVOA_D
ClientSampled :
 PHC-BEAPT-001

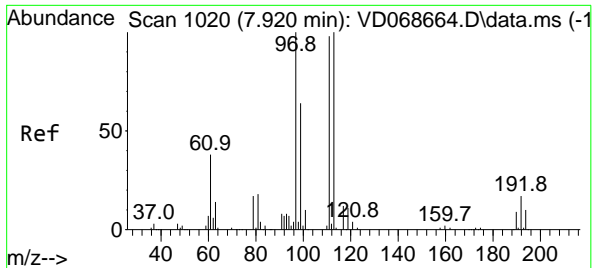
Tgt Ion: 65 Resp: 158470
 Ion Ratio Lower Upper
 65 100
 67 52.6 0.0 106.0



#34
 1,4-Difluorobenzene
 Concen: 50.00 ug/l
 RT: 8.867 min Scan# 1181
 Delta R.T. 0.000 min
 Lab File: VD068683.D
 Acq: 26 Mar 2021 14:40

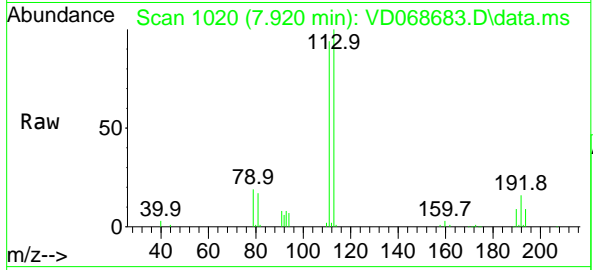
Tgt Ion:114 Resp: 476663
 Ion Ratio Lower Upper
 114 100
 63 18.6 0.0 38.2
 88 14.5 0.0 29.4



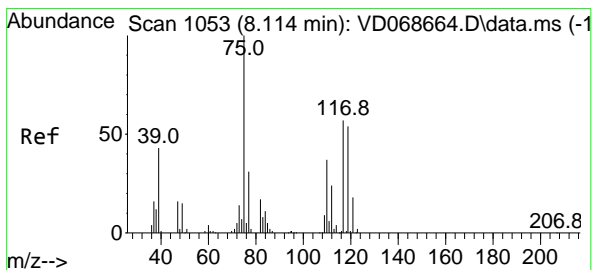
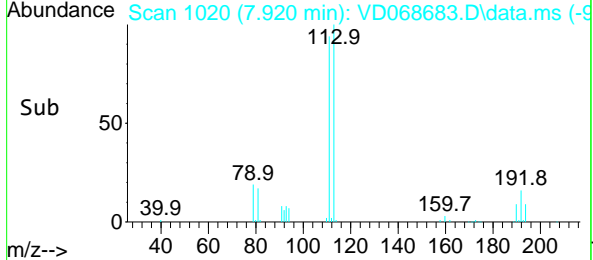
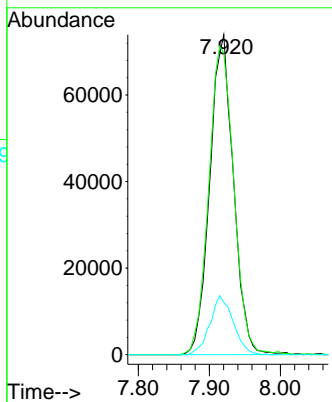


#35
 Dibromofluoromethane
 Concen: 57.53 ug/l
 RT: 7.920 min Scan# 1020
 Delta R.T. 0.000 min
 Lab File: VD068683.D
 Acq: 26 Mar 2021 14:40

Instrument :
 MSVOA_D
 ClientSampled :
 PHC-BEAPT-001

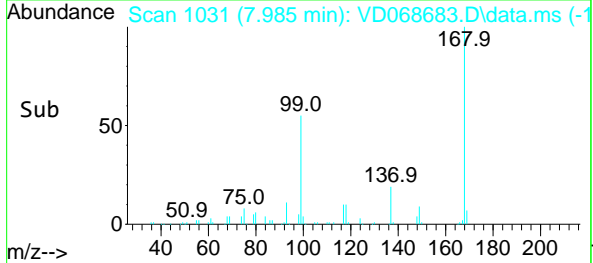
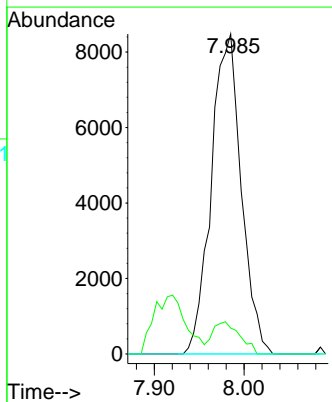
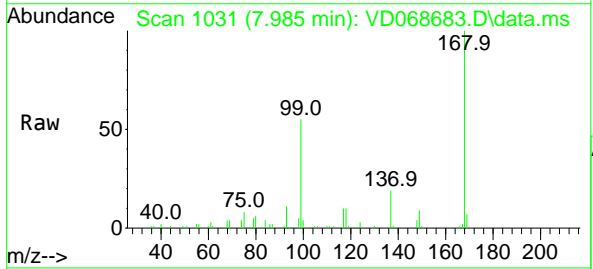


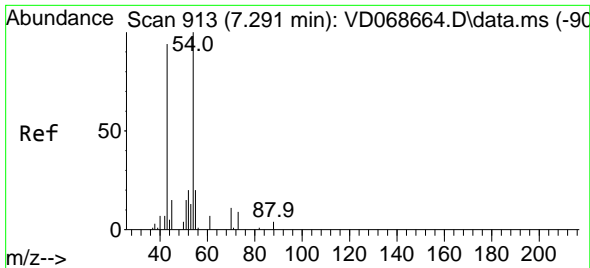
Tgt Ion:113 Resp: 170611
 Ion Ratio Lower Upper
 113 100
 111 102.8 82.5 123.7
 192 18.2 15.1 22.7



#36
 1,1-Dichloropropene
 Concen: 4.61 ug/l
 RT: 7.985 min Scan# 1031
 Delta R.T. -0.129 min
 Lab File: VD068683.D
 Acq: 26 Mar 2021 14:40

Tgt Ion: 75 Resp: 19647
 Ion Ratio Lower Upper
 75 100
 110 9.1 18.1 54.4#
 77 0.0 24.7 37.1#



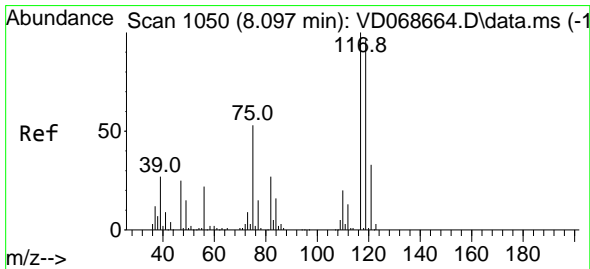
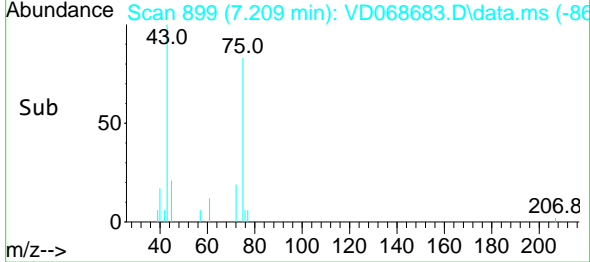
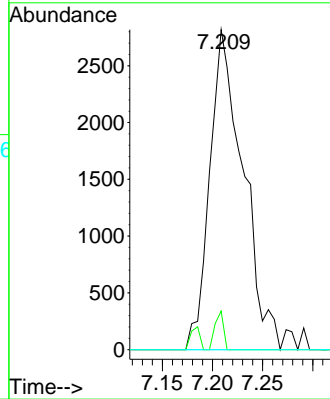
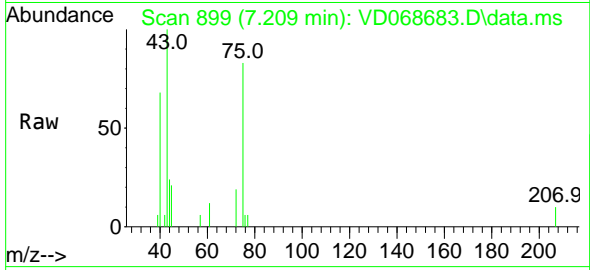


#37
 Ethyl Acetate
 Concen: 4.85 ug/l
 RT: 7.209 min Scan# 899
 Delta R.T. -0.082 min
 Lab File: VD068683.D
 Acq: 26 Mar 2021 14:40

Instrument :
 MSVOA_D
 ClientSampled :
 PHC-BEAPT-001

Tgt Ion: 43 Resp: 6517

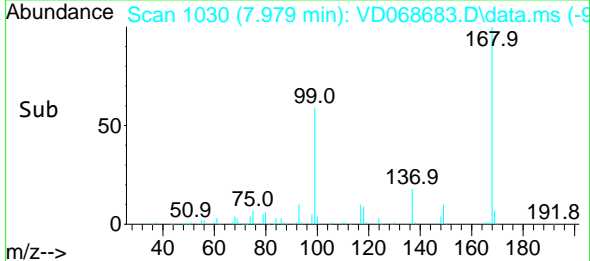
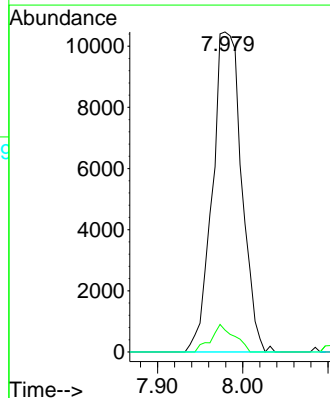
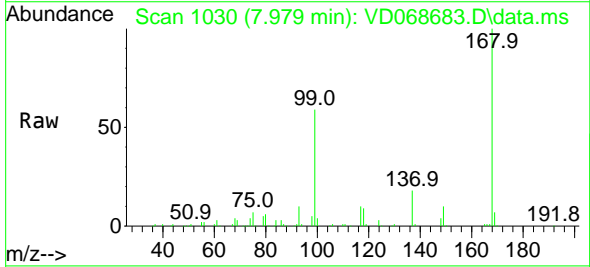
Ion	Ratio	Lower	Upper
43	100		
61	3.1	14.2	21.4#
70	0.0	9.4	14.0#

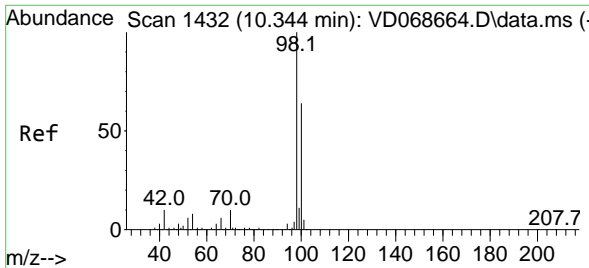


#38
 Carbon Tetrachloride
 Concen: 5.87 ug/l
 RT: 7.979 min Scan# 1030
 Delta R.T. -0.118 min
 Lab File: VD068683.D
 Acq: 26 Mar 2021 14:40

Tgt Ion: 117 Resp: 24944

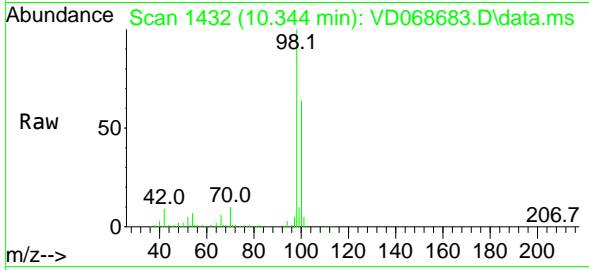
Ion	Ratio	Lower	Upper
117	100		
119	6.8	76.6	115.0#
121	0.0	26.1	39.1#



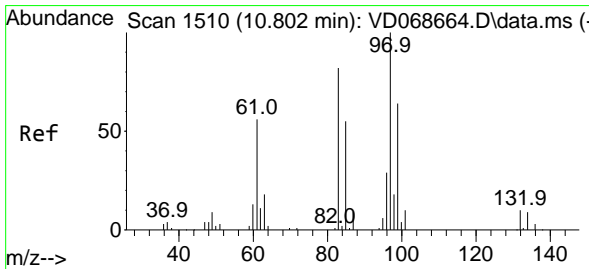
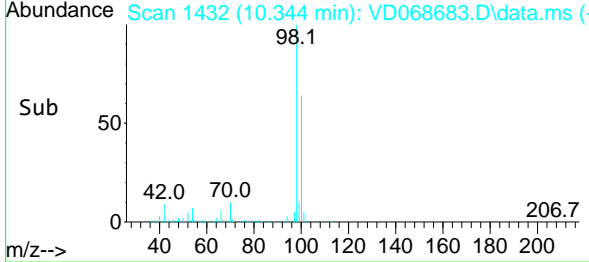
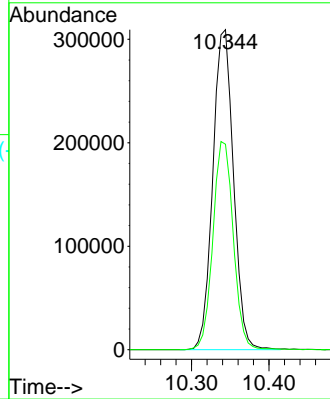


#50
 Toluene-d8
 Concen: 50.21 ug/l
 RT: 10.344 min Scan# 1432
 Delta R.T. 0.000 min
 Lab File: VD068683.D
 Acq: 26 Mar 2021 14:40

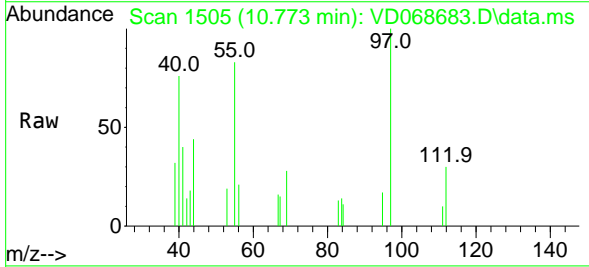
Instrument :
 MSVOA_D
 ClientSampled :
 PHC-BEAPT-001



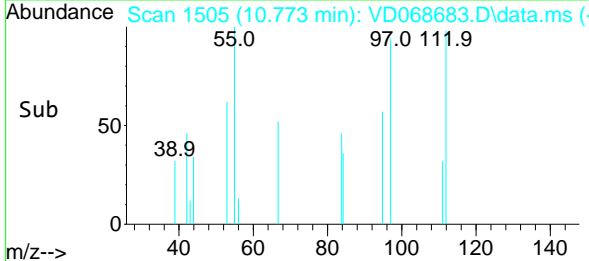
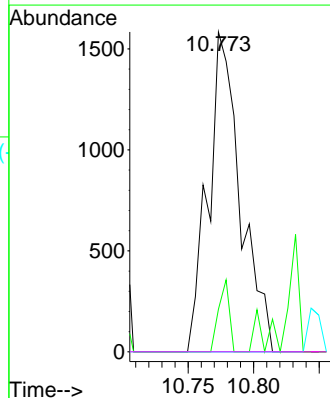
Tgt Ion: 98 Resp: 574074
 Ion Ratio Lower Upper
 98 100
 100 64.3 51.8 77.6

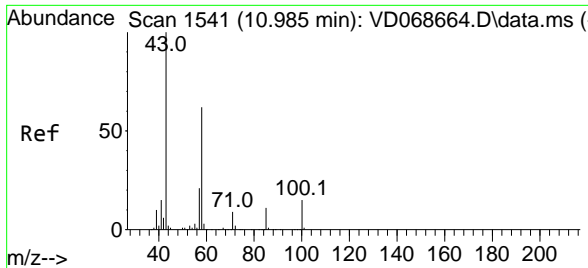


#55
 1,1,2-Trichloroethane
 Concen: 1.14 ug/l
 RT: 10.773 min Scan# 1505
 Delta R.T. -0.029 min
 Lab File: VD068683.D
 Acq: 26 Mar 2021 14:40



Tgt Ion: 97 Resp: 2707
 Ion Ratio Lower Upper
 97 100
 83 13.3 65.7 98.5#
 85 0.0 44.3 66.5#
 99 0.0 51.4 77.2#

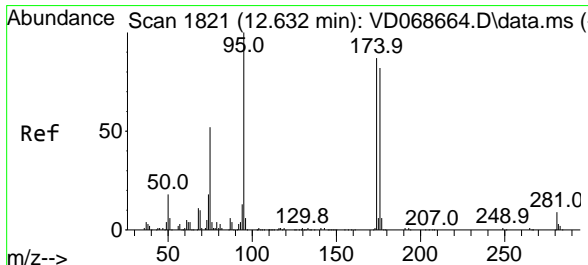
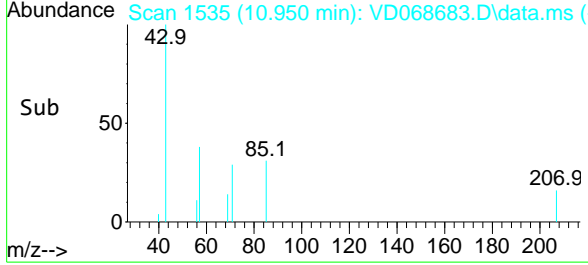
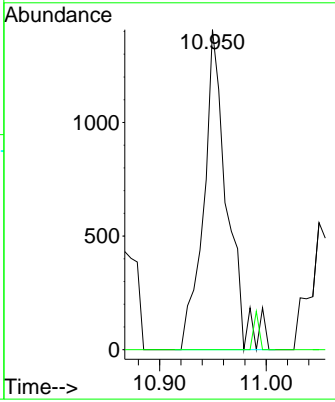
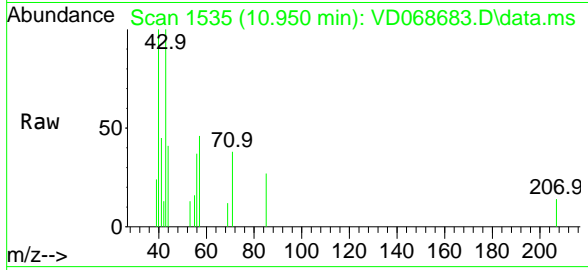




#59
 2-Hexanone
 Concen: 2.42 ug/l
 RT: 10.950 min Scan# 1535
 Delta R.T. -0.035 min
 Lab File: VD068683.D
 Acq: 26 Mar 2021 14:40

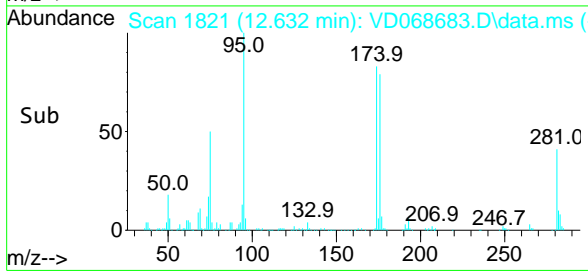
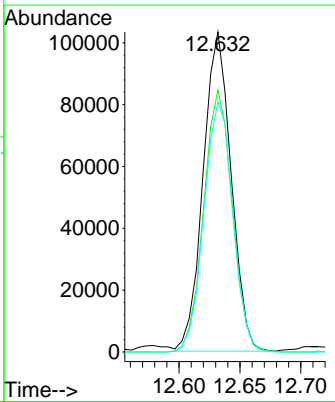
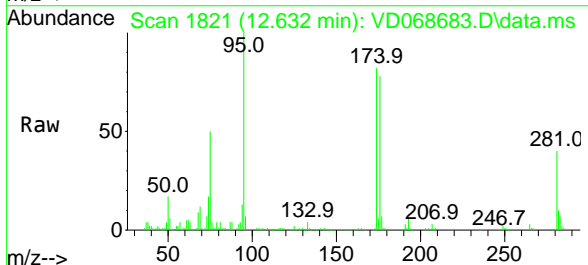
Instrument :
 MSVOA_D
ClientSampled :
 PHC-BEAPT-001

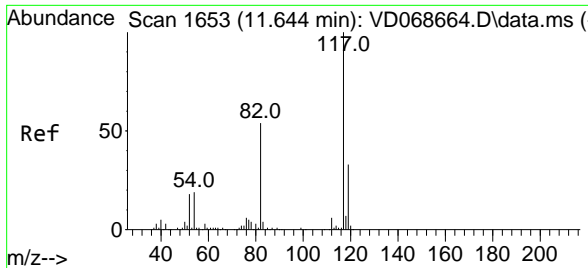
Tgt Ion: 43 Resp: 2180
 Ion Ratio Lower Upper
 43 100
 58 0.0 31.3 93.8#



#62
 4-Bromofluorobenzene
 Concen: 44.56 ug/l
 RT: 12.632 min Scan# 1821
 Delta R.T. 0.000 min
 Lab File: VD068683.D
 Acq: 26 Mar 2021 14:40

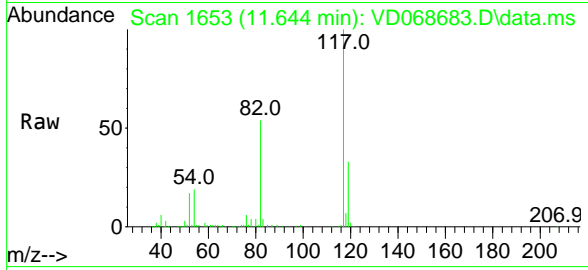
Tgt Ion: 95 Resp: 165207
 Ion Ratio Lower Upper
 95 100
 174 83.8 0.0 168.0
 176 80.9 0.0 160.2





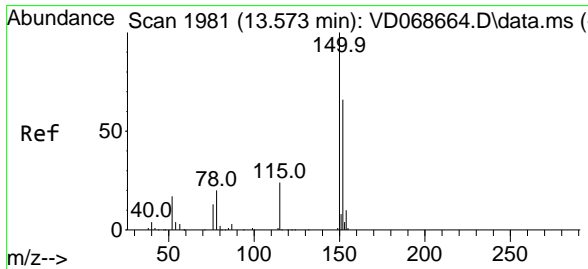
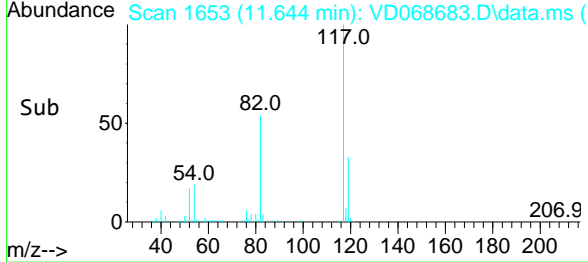
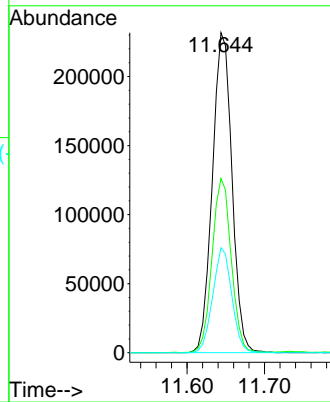
#63
 Chlorobenzene-d5
 Concen: 50.00 ug/l
 RT: 11.644 min Scan# 1653
 Delta R.T. 0.000 min
 Lab File: VD068683.D
 Acq: 26 Mar 2021 14:40

Instrument :
 MSVOA_D
ClientSampled :
 PHC-BEAPT-001

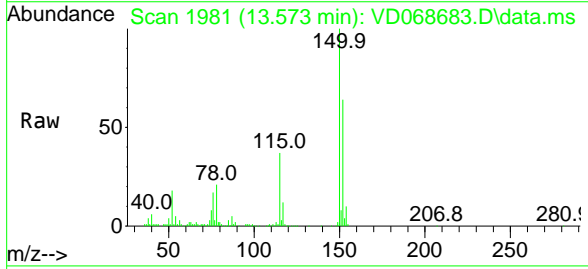


Tgt Ion:117 Resp: 407195

Ion	Ratio	Lower	Upper
117	100		
82	54.4	43.5	65.3
119	32.8	26.7	40.1

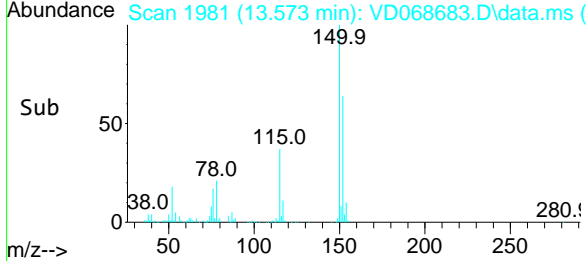
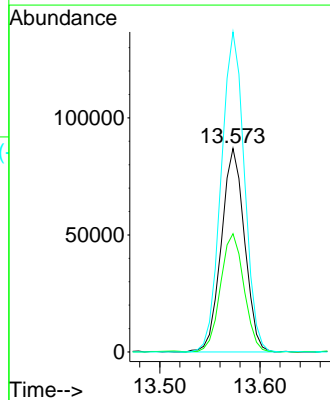


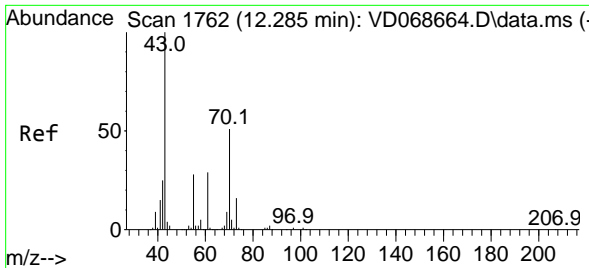
#72
 1,4-Dichlorobenzene-d4
 Concen: 50.00 ug/l
 RT: 13.573 min Scan# 1981
 Delta R.T. 0.000 min
 Lab File: VD068683.D
 Acq: 26 Mar 2021 14:40



Tgt Ion:152 Resp: 139688

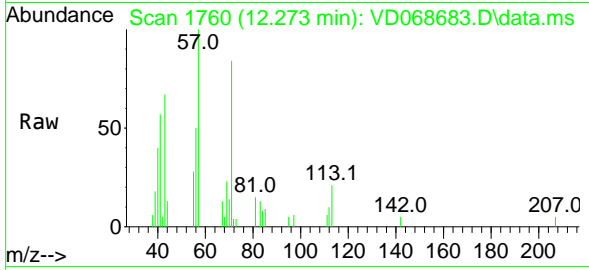
Ion	Ratio	Lower	Upper
152	100		
115	58.8	29.3	87.8
150	157.4	0.0	347.6



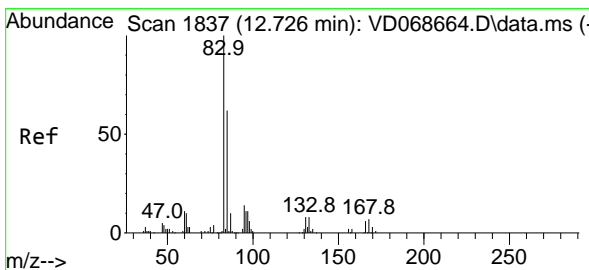
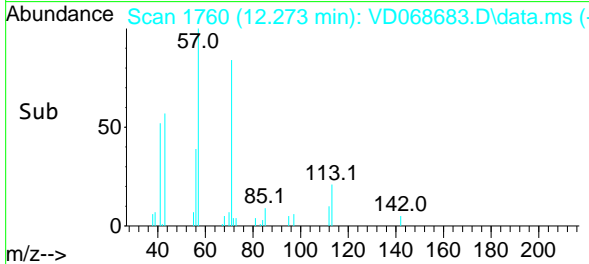
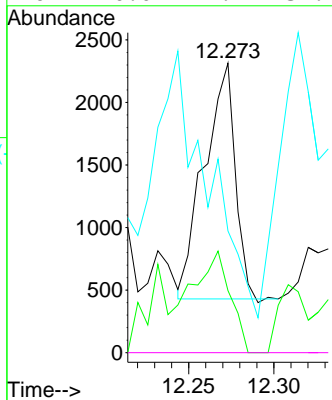


#74
 N-amy1 acetate
 Concen: 1.48 ug/l
 RT: 12.273 min Scan# 1760
 Delta R.T. -0.012 min
 Lab File: VD068683.D
 Acq: 26 Mar 2021 14:40

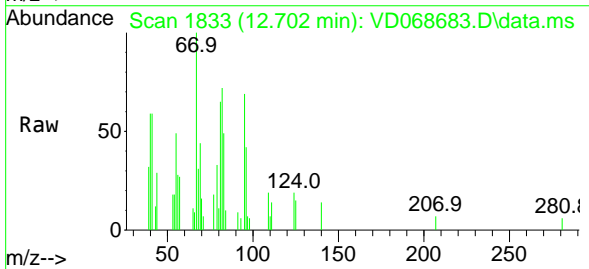
Instrument :
 MSVOA_D
ClientSampled :
 PHC-BEAPT-001



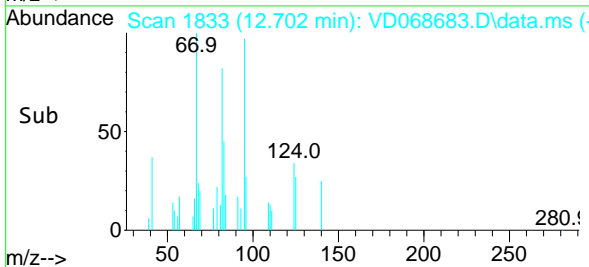
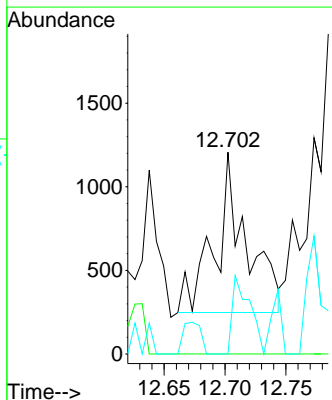
Tgt Ion	Resp	Lower	Upper
43	100		
70	49.9	41.9	62.9
55	0.0	22.8	34.2#
61	0.0	22.7	34.1#

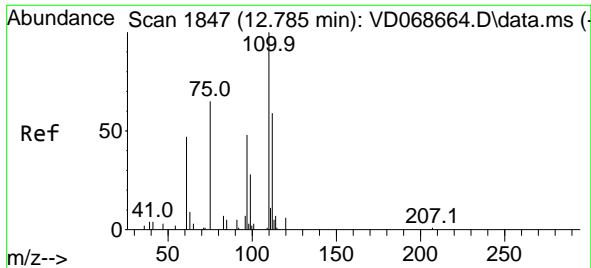


#75
 1,1,2,2-Tetrachloroethane
 Concen: 1.01 ug/l
 RT: 12.702 min Scan# 1833
 Delta R.T. -0.023 min
 Lab File: VD068683.D
 Acq: 26 Mar 2021 14:40



Tgt Ion	Resp	Lower	Upper
83	100		
131	0.0	5.1	15.3#
85	27.1	32.0	96.0#

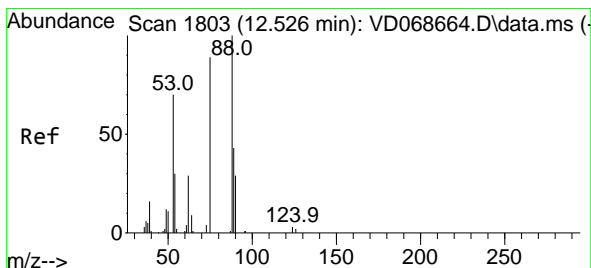
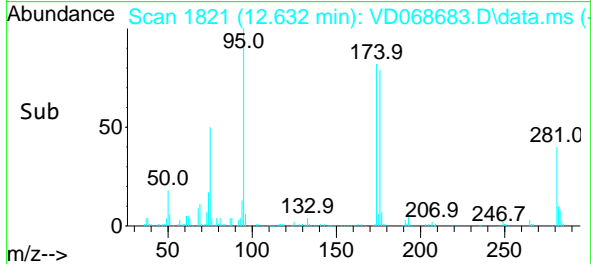
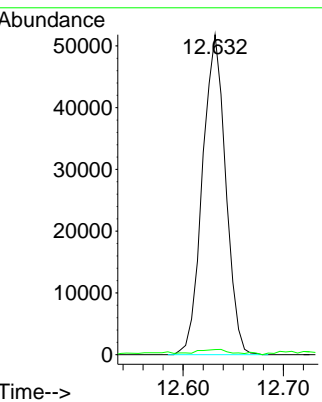
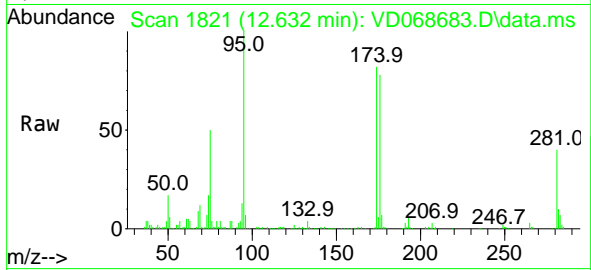




#76
 1,2,3-Trichloropropane
 Concen: 71.62 ug/l
 RT: 12.632 min Scan# 1821
 Delta R.T. -0.153 min
 Lab File: VD068683.D
 Acq: 26 Mar 2021 14:40

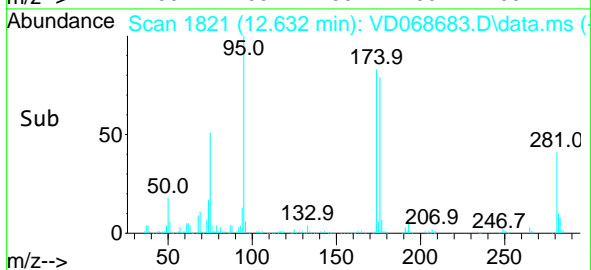
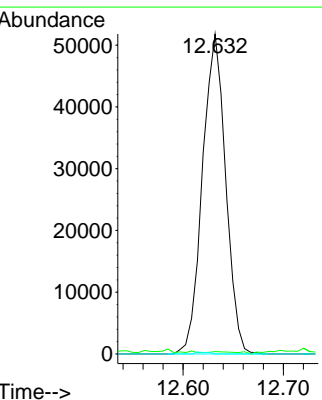
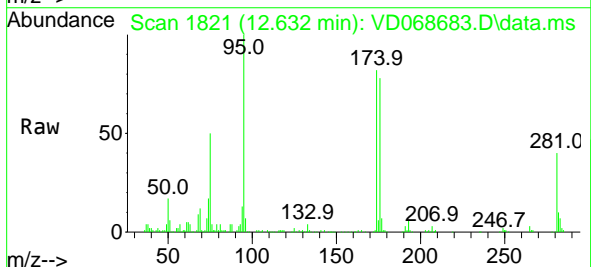
Instrument :
 MSVOA_D
 ClientSampled :
 PHC-BEAPT-001

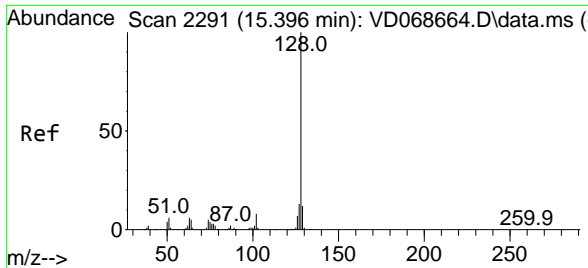
Tgt Ion: 75 Resp: 83274
 Ion Ratio Lower Upper
 75 100
 77 1.7 0.0 0.0#



#81
 trans-1,4-Dichloro-2-butene
 Concen: 162.95 ug/l
 RT: 12.632 min Scan# 1821
 Delta R.T. 0.106 min
 Lab File: VD068683.D
 Acq: 26 Mar 2021 14:40

Tgt Ion: 75 Resp: 83274
 Ion Ratio Lower Upper
 75 100
 53 0.9 66.8 100.2#
 89 0.0 36.6 54.8#





#95
 Naphthalene
 Concen: 1.36 ug/l
 RT: 15.402 min Scan# 2292
 Delta R.T. 0.006 min
 Lab File: VD068683.D
 Acq: 26 Mar 2021 14:40

Instrument :
 MSVOA_D
 ClientSampled :
 PHC-BEAPT-001

Tgt Ion:128 Resp: 5909

Ion	Ratio	Lower	Upper
128	100		
127	16.5	10.2	15.4#
129	0.0	8.9	13.3#

