

Data Path : Z:\VOASRV\HPCHEM1\MSVOA_D\DATA\VD032719\
 Data File : VD061379.D
 Acq On : 28 Mar 2019 5:29
 Operator : VA/AP
 Sample : K2090-01
 Misc : 6.37g/5ml/MSVOA_D/SOIL
 ALS Vial : 41 Sample Multiplier: 1

Instrument :
 MSVOA_D
 ClientSampleId :
 P-5(0-10)

Integration Parameters: RTEINT.P

Integrator: RTE
 Smoothing : ON Filtering: 5
 Sampling : 1 Min Area: 3 % of largest Peak
 Start Thrs: 0.2 Max Peaks: 100
 Stop Thrs : 0 Peak Location: TOP

If leading or trailing edge < 100 prefer < Baseline drop else tangent >
 Peak separation: 5

Method : Z:\VOASRV\HPCHEM1\MSVOA_D\METHOD\82D032719S.M
 Title : SW846 8260

Signal : TIC

peak #	R.T. min	first scan	max scan	last scan	PK TY	peak height	corr. area	corr. % max.	% of total
1	3.203	173	181	191	rBV	39211	109148	5.09%	0.896%
2	3.794	236	241	252	rBV	76121	222866	10.39%	1.829%
3	6.895	549	556	562	rBV2	292304	881860	41.11%	7.238%
4	7.013	562	568	589	rVB	532673	1621794	75.61%	13.310%
5	7.426	603	610	620	rBV	200143	562001	26.20%	4.612%
6	8.184	681	687	701	rBV	828115	2119259	98.80%	17.393%
7	10.380	905	910	917	rBV	669877	1520845	70.91%	12.482%
8	10.478	917	920	925	rVB	21387	49445	2.31%	0.406%
9	12.349	1106	1110	1119	rVB	1305505	2144893	100.00%	17.604%
10	13.540	1227	1231	1239	rVB	667364	914960	42.66%	7.509%
11	14.219	1298	1300	1303	rBV	21384	25561	1.19%	0.210%
12	14.504	1326	1329	1332	rBV	1063014	1339181	62.44%	10.991%
13	14.544	1332	1333	1336	rVB	28783	23517	1.10%	0.193%
14	14.691	1344	1348	1349	rBV2	17906	26359	1.23%	0.216%
15	14.721	1349	1351	1353	rVV	23808	26298	1.23%	0.216%
16	14.760	1353	1355	1360	rVB2	42397	59858	2.79%	0.491%
17	14.967	1373	1376	1377	rBV	28011	37822	1.76%	0.310%
18	14.987	1377	1378	1381	rVV	25559	24947	1.16%	0.205%
19	15.046	1381	1384	1386	rVB	53890	65264	3.04%	0.536%
20	15.134	1391	1393	1398	rVB2	17561	31956	1.49%	0.262%
21	15.253	1403	1405	1408	rBV	18645	22487	1.05%	0.185%
22	15.331	1411	1413	1415	rVV	44505	53459	2.49%	0.439%
23	15.361	1415	1416	1419	rVV	80868	95736	4.46%	0.786%
24	15.420	1419	1422	1424	rVV	20200	26575	1.24%	0.218%
25	15.558	1433	1436	1439	rVV	13720	24344	1.13%	0.200%
26	15.617	1439	1442	1444	rVV	20545	22677	1.06%	0.186%
27	15.656	1444	1446	1451	rVV2	73360	99043	4.62%	0.813%
28	15.902	1468	1471	1475	rVB2	16986	32221	1.50%	0.264%

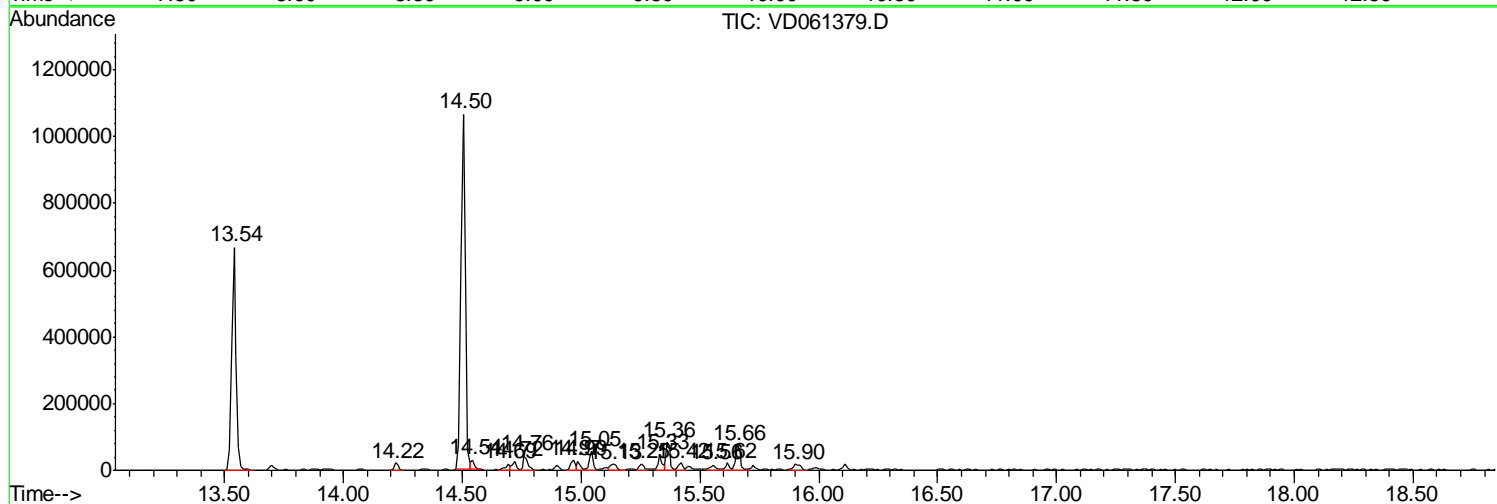
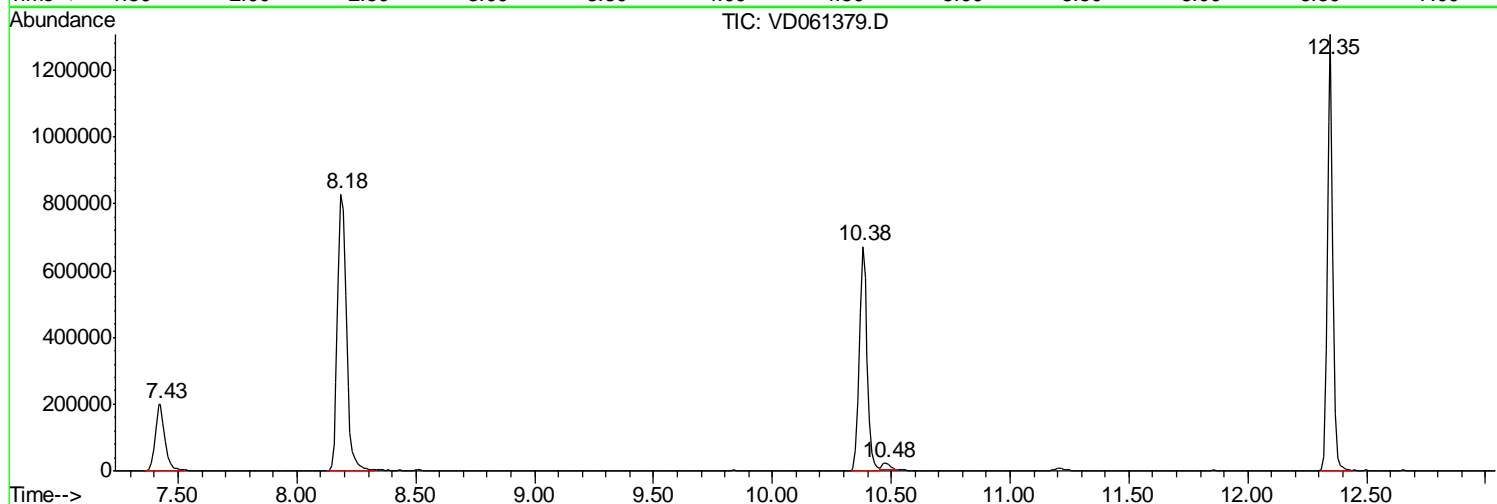
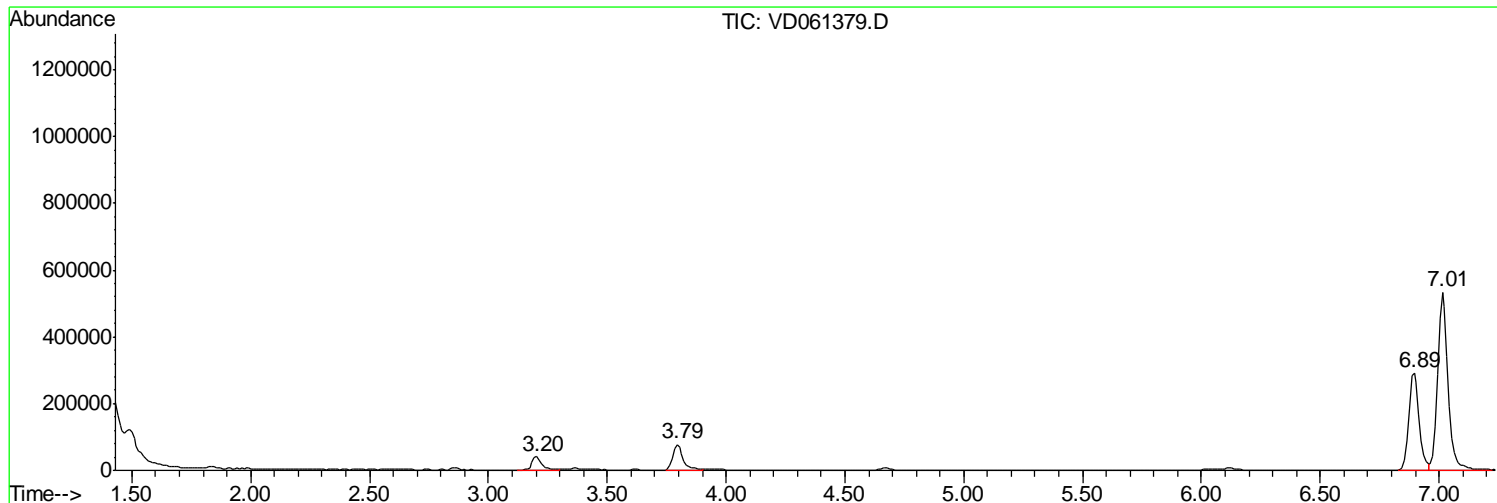
Sum of corrected areas: 12184376

Data Path : Z:\VOASRV\HPCHEM1\MSVOA_D\DATA\VD032719\
 Data File : VD061379.D
 Acq On : 28 Mar 2019 5:29
 Operator : VA/AP
 Sample : K2090-01
 Misc : 6.37g/5ml/MSVOA_D/SOIL
 ALS Vial : 41 Sample Multiplier: 1

Instrument :
 MSVOA_D
 ClientSampled :
 P-5(0-10)

Quant Method : Z:\VOASRV\HPCHEM1\MSVOA_D\METHOD\82D032719S.M
 Quant Title : SW846 8260

TIC Library : C:\DATABASE\NIST11.L
 TIC Integration Parameters: LSCINT.P



Data Path : Z:\VOASRV\HPCHEM1\MSVOA_D\DATA\VD032719\
Data File : VD061379.D
Acq On : 28 Mar 2019 5:29
Operator : VA/AP
Sample : K2090-01
Misc : 6.37g/5ml/MSVOA_D/SOIL
ALS Vial : 41 Sample Multiplier: 1

Instrument :
MSVOA_D
ClientSampleId :
P-5(0-10)

Quant Method : Z:\VOASRV\HPCHEM1\MSVOA_D\METHOD\82D032719S.M
Quant Title : SW846 8260

TIC Library : C:\DATABASE\NIST11.L
TIC Integration Parameters: LSCINT.P

No Library Search Compounds Detected

Data Path : Z:\VOASRV\HPCHEM1\MSVOA_D\DATA\VD032719\
Data File : VD061379.D
Acq On : 28 Mar 2019 5:29
Operator : VA/AP
Sample : K2090-01
Misc : 6.37g/5ml/MSVOA_D/SOIL
ALS Vial : 41 Sample Multiplier: 1

Instrument :
MSVOA_D
ClientSampleId :
P-5(0-10)

Quant Method : Z:\VOASRV\HPCHEM1\MSVOA_D\METHOD\82D032719S.M
Quant Title : SW846 8260

TIC Library : C:\DATABASE\NIST11.L
TIC Integration Parameters: LSCINT.P

TIC Top Hit name	RT	EstConc	Units	Response	--Internal Standard--			
					#	RT	Resp	Conc
