

Data Path : Z:\VOASRV\HPCHEM1\MSVOA D\DATA\VD032819\  
 Data File : VD061407.D  
 Acq On : 28 Mar 2019 22:46  
 Operator : VA/AP  
 Sample : K2111-11  
 Misc : 3.67g/5ml/MSVOA D/SOIL  
 ALS Vial : 21 Sample Multiplier: 1

Instrument :  
 MSVOA\_D  
 ClientSampleID :  
 STA(20)

Quant Time: Mar 29 02:01:16 2019  
 Quant Method : Z:\VOASRV\HPCHEM1\MSVOA\_D\METHOD\82D032719S.M  
 Quant Title : SW846 8260  
 QLast Update : Thu Mar 28 09:22:37 2019  
 Response via : Initial Calibration

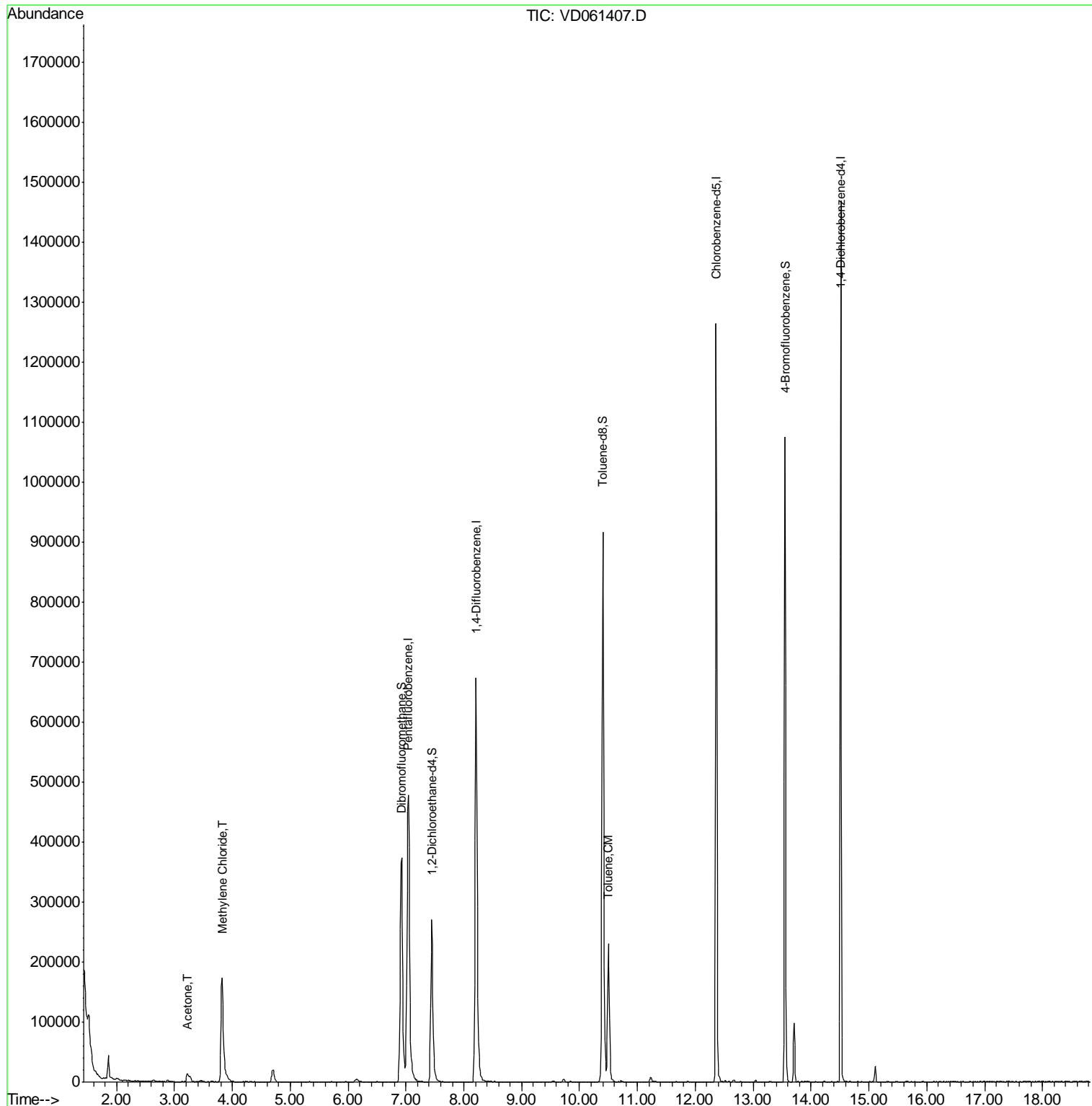
Internal Standards	R.T.	QIon	Response	Conc	Units	Dev(Min)
1) Pentafluorobenzene	7.04	168	519045	50.00	ug/l	0.02
34) 1,4-Difluorobenzene	8.21	114	876892	50.00	ug/l	0.02
63) Chlorobenzene-d5	12.36	117	776590	50.00	ug/l	0.00
72) 1,4-Dichlorobenzene-d4	14.51	152	332631	50.00	ug/l	0.00
System Monitoring Compounds						
33) 1,2-Dichloroethane-d4	7.45	65	249342	56.24	ug/l	0.01
Spiked Amount	50.000		Recovery	=	112.48%	
35) Dibromofluoromethane	6.92	113	364551	54.40	ug/l	0.02
Spiked Amount	50.000		Recovery	=	108.80%	
50) Toluene-d8	10.40	98	810128	50.41	ug/l	0.01
Spiked Amount	50.000		Recovery	=	100.82%	
62) 4-Bromofluorobenzene	13.55	95	325754	52.85	ug/l	0.00
Spiked Amount	50.000		Recovery	=	105.70%	
Target Compounds						
16) Acetone	3.22	43	29554	25.929	ug/l	100
20) Methylene Chloride	3.82	84	136943	20.307	ug/l	97
52) Toluene	10.50	92	125528	10.712	ug/l	97

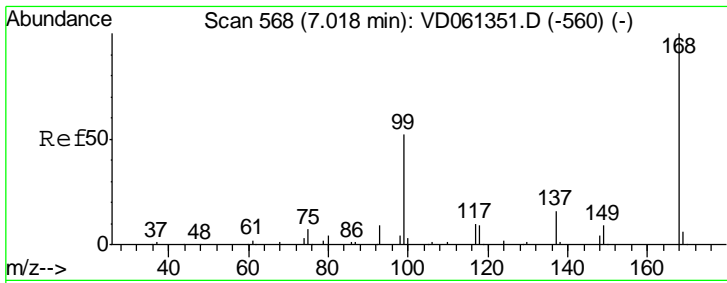
(#) = qualifier out of range (m) = manual integration (+) = signals summed

Data Path : Z:\VOASRV\HPCHEM1\MSVOA D\DATA\VD032819\  
 Data File : VD061407.D  
 Acq On : 28 Mar 2019 22:46  
 Operator : VA/AP  
 Sample : K2111-11  
 Misc : 3.67µ/5ml/MSVOA D/SOIL  
 ALS Vial : 21 Sample Multiplier: 1

Instrument :  
 MSVOA\_D  
 ClientSampleId :  
 STA(20)

Quant Time: Mar 29 02:01:16 2019  
 Quant Method : Z:\VOASRV\HPCHEM1\MSVOA\_D\METHOD\82D032719S.M  
 Quant Title : SW846 8260  
 QLast Update : Thu Mar 28 09:22:37 2019  
 Response via : Initial Calibration

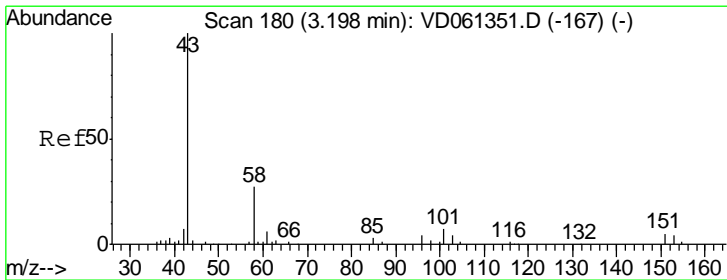
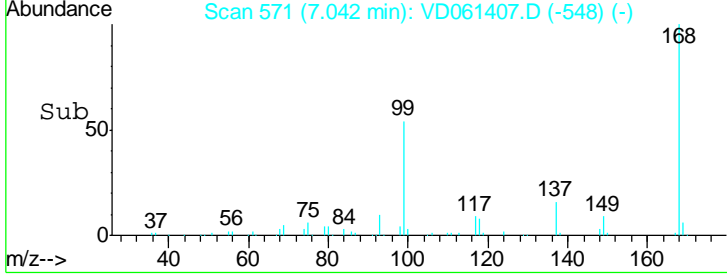
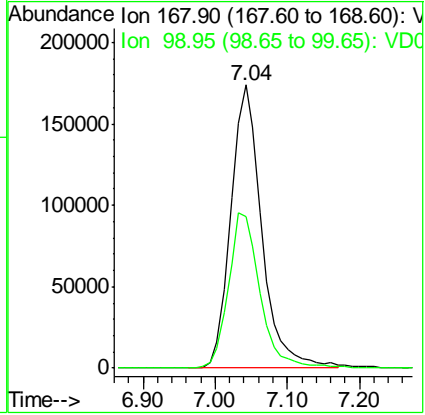
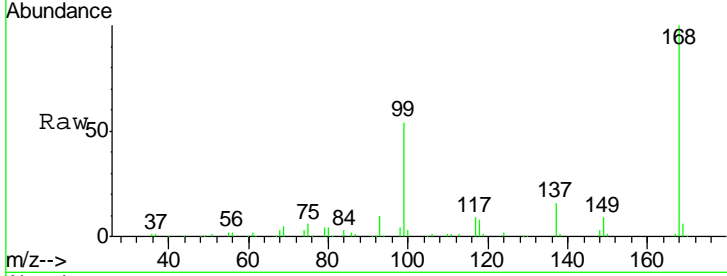




#1  
 Pentafluorobenzene  
 Concen: 50.000 ug/l  
 RT: 7.04 min Scan# 571  
 Delta R.T. 0.02 min  
 Lab File: VD061407.D  
 Acq: 28 Mar 2019 22:46

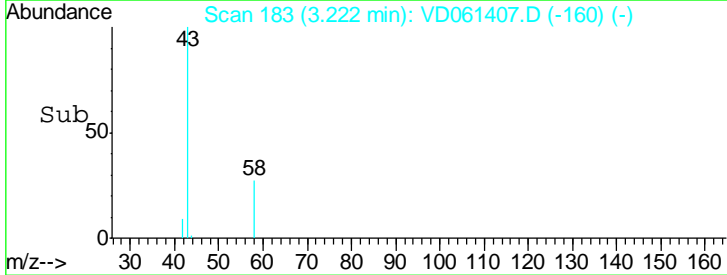
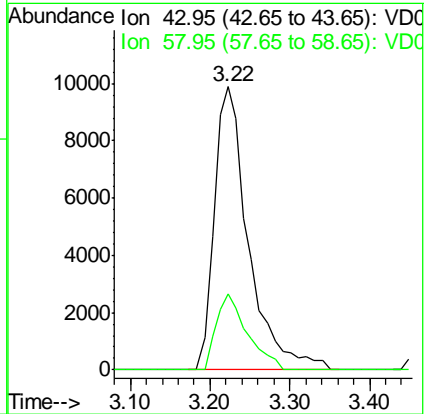
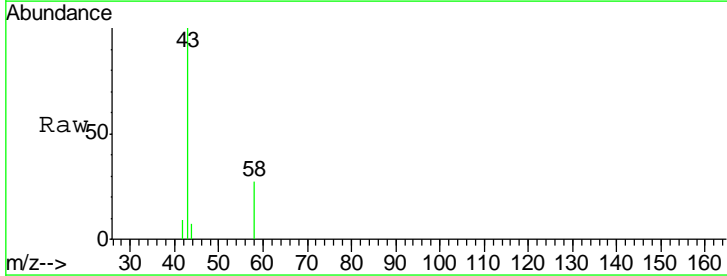
**Instrument :**  
 MSVOA\_D  
**ClientSampled :**  
 STA(20)

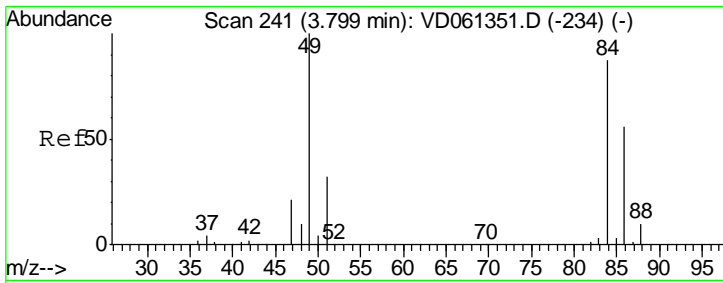
Tot Ion: 168 Resp: 519045  
 Ion Ratio Lower Upper  
 168 100  
 99 53.5 43.1 64.7



#16  
 Acetone  
 Concen: 25.929 ug/l  
 RT: 3.22 min Scan# 183  
 Delta R.T. 0.02 min  
 Lab File: VD061407.D  
 Acq: 28 Mar 2019 22:46

Tgt Ion: 43 Resp: 29554  
 Ion Ratio Lower Upper  
 43 100  
 58 26.8 21.5 32.3

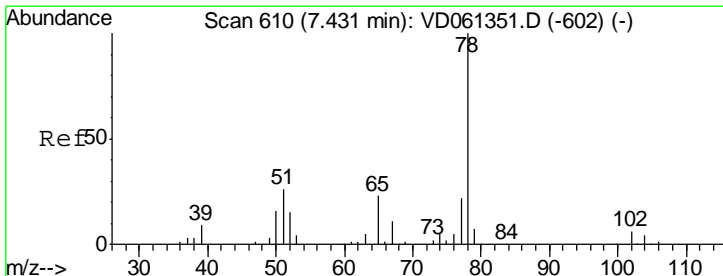
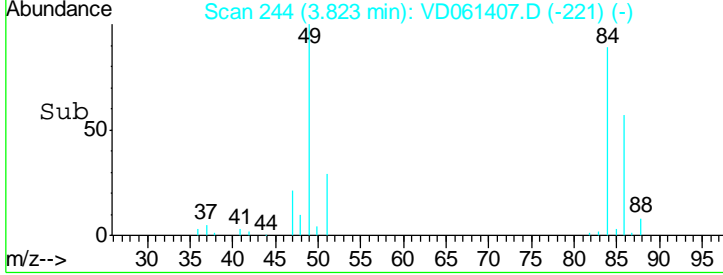
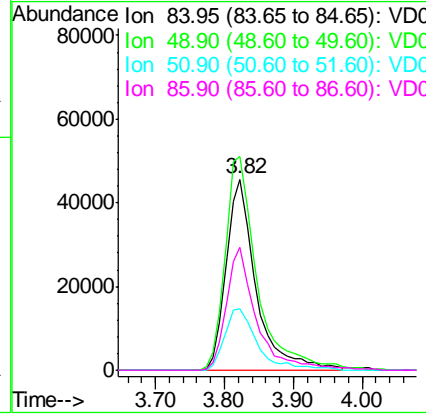
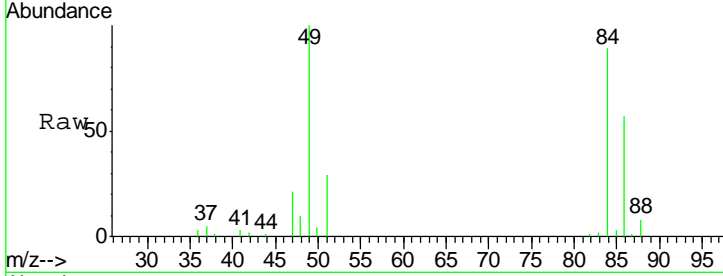




#20  
 Methylene Chloride  
 Concen: 20.307 ug/l  
 RT: 3.82 min Scan# 244  
 Delta R.T. 0.02 min  
 Lab File: VD061407.D  
 Acq: 28 Mar 2019 22:46

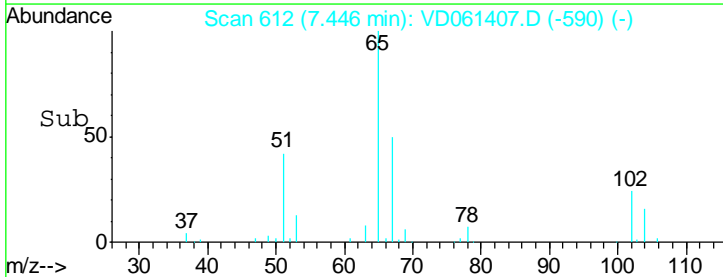
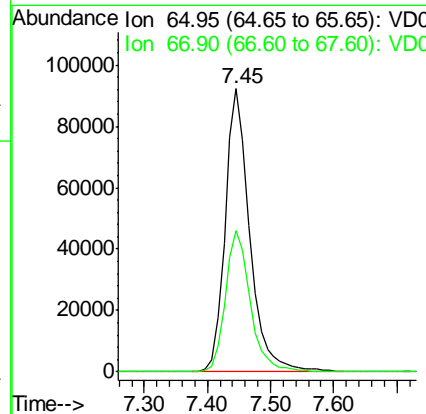
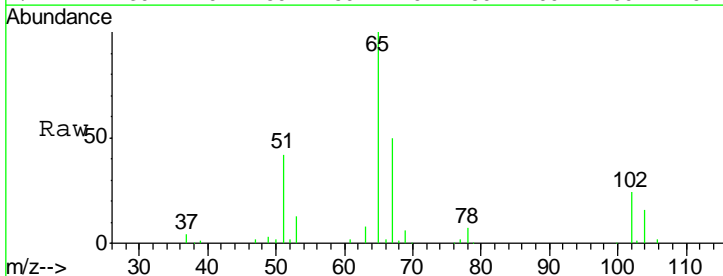
**Instrument :**  
 MSVOA\_D  
**ClientSampled :**  
 STA(20)

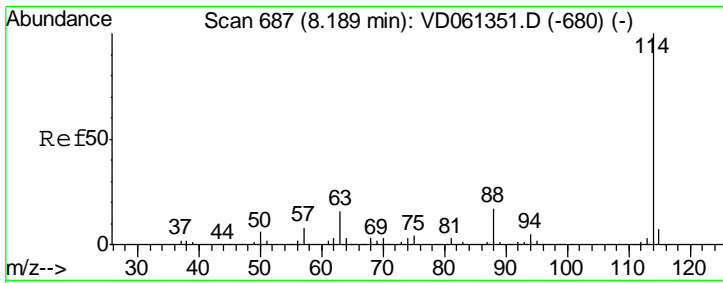
Tgt Ion	Resp	Lower	Upper
84	100		
49	111.8	91.8	137.8
51	32.3	29.8	44.8
86	64.3	51.8	77.6



#33  
 1,2-Dichloroethane-d4  
 Concen: N.D. ug/l  
 RT: 7.45 min Scan# 612  
 Delta R.T. 0.01 min  
 Lab File: VD061407.D  
 Acq: 28 Mar 2019 22:46

Tgt Ion	Resp	Lower	Upper
65	100		
67	50.0	0.0	99.8

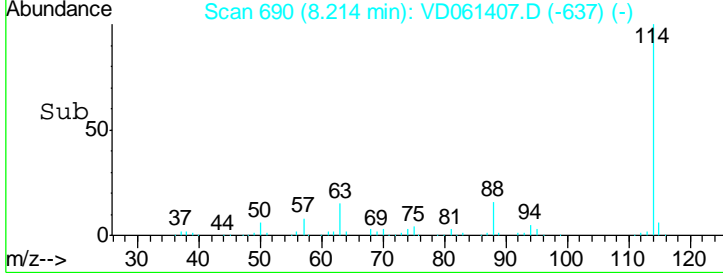
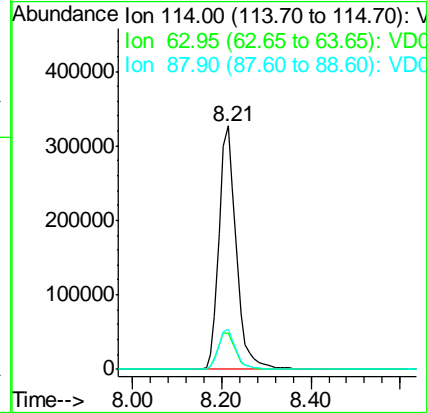
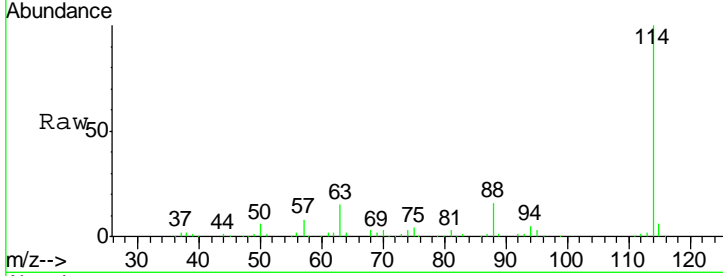




#34  
 1,4-Difluorobenzene  
 Concen: 50.000 ug/l  
 RT: 8.21 min Scan# 690  
 Delta R.T. 0.02 min  
 Lab File: VD061407.D  
 Acq: 28 Mar 2019 22:46

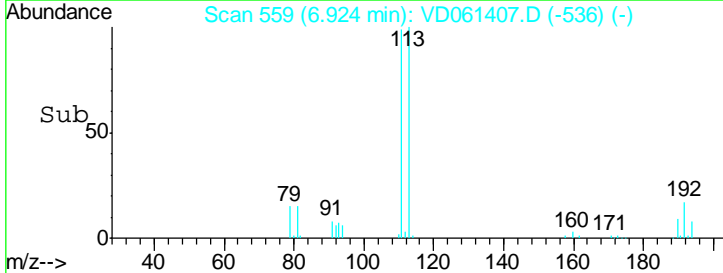
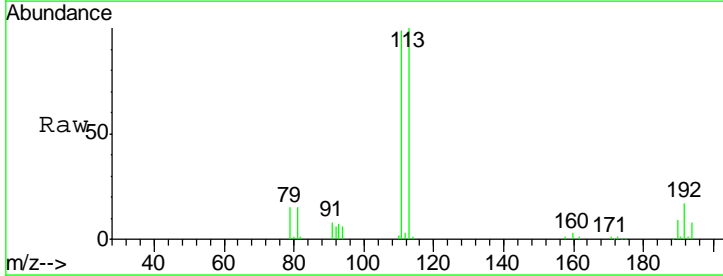
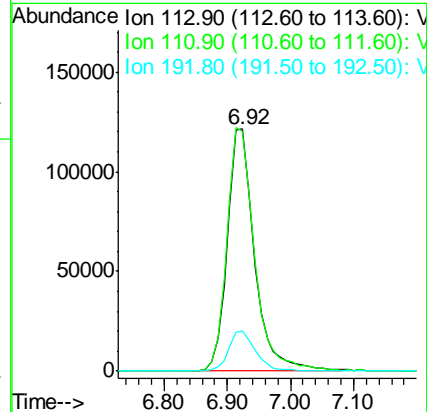
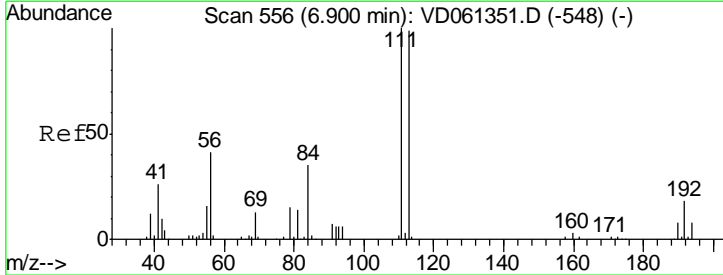
**Instrument :**  
 MSVOA\_D  
**ClientSampled :**  
 STA(20)

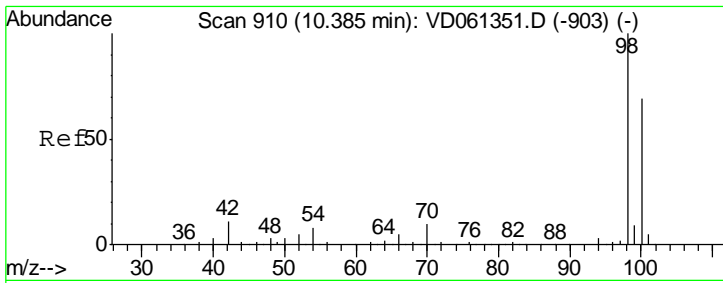
Tgt Ion	Resp	Lower	Upper
114	100		
63	15.0	0.0	31.6
88	16.4	0.0	33.4



#35  
 Dibromofluoromethane  
 Concen: 50.000 ug/l  
 RT: 6.92 min Scan# 559  
 Delta R.T. 0.02 min  
 Lab File: VD061407.D  
 Acq: 28 Mar 2019 22:46

Tgt Ion	Resp	Lower	Upper
113	100		
111	99.0	81.0	121.6
192	16.7	14.4	21.6

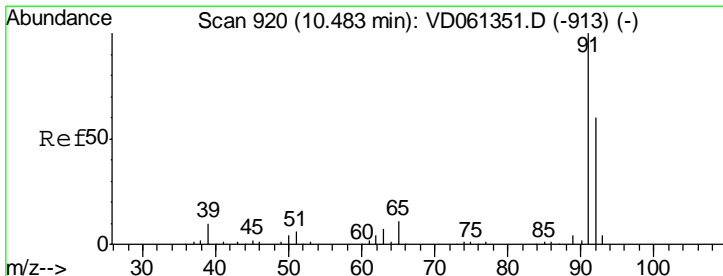
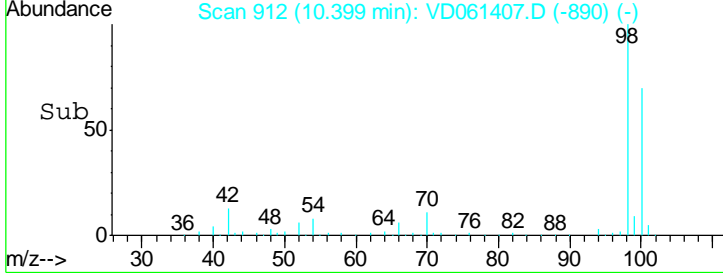
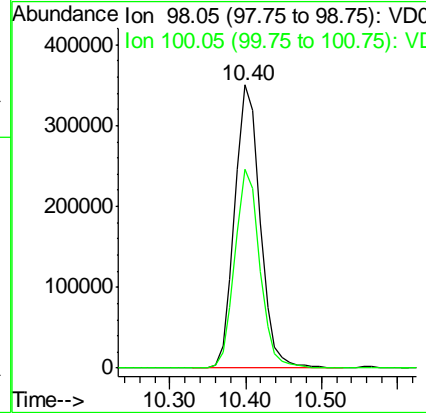
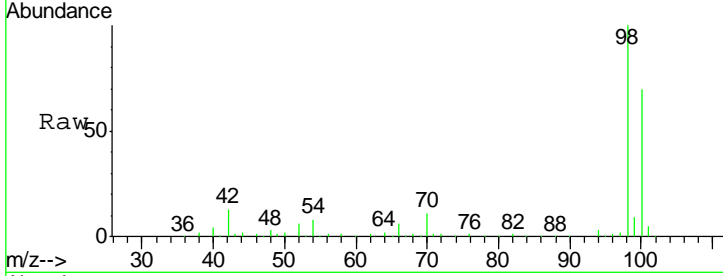




#50  
 Toluene-d8  
 Concen: N.D. ug/l  
 RT: 10.40 min Scan# 912  
 Delta R.T. 0.01 min  
 Lab File: VD061407.D  
 Acq: 28 Mar 2019 22:46

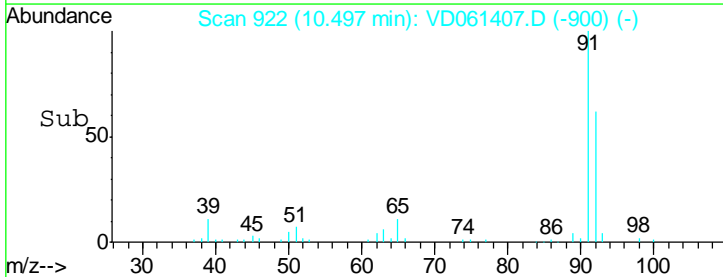
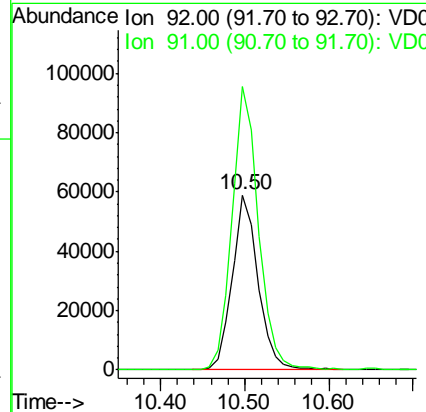
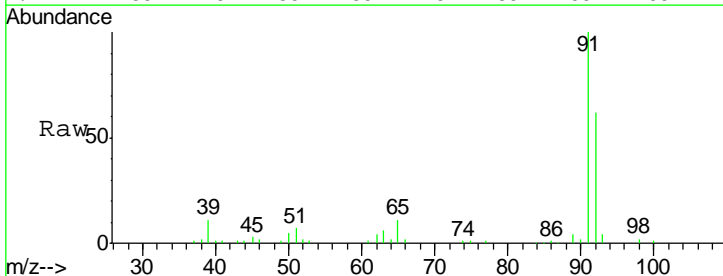
**Instrument :**  
 MSVOA\_D  
**ClientSampled :**  
 STA(20)

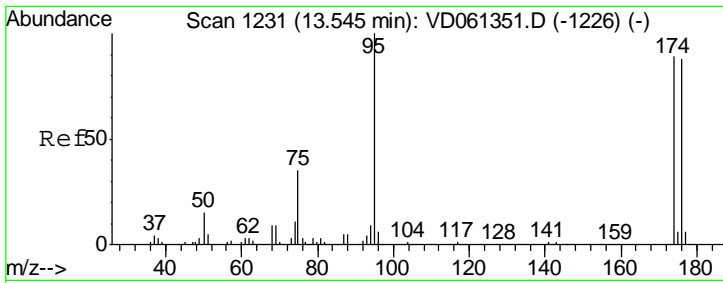
Tgt Ion: 98 Resp: 810128  
 Ion Ratio Lower Upper  
 98 100  
 100 70.4 56.2 84.2



#52  
 Toluene  
 Concen: 10.712 ug/l  
 RT: 10.50 min Scan# 922  
 Delta R.T. 0.01 min  
 Lab File: VD061407.D  
 Acq: 28 Mar 2019 22:46

Tgt Ion: 92 Resp: 125528  
 Ion Ratio Lower Upper  
 92 100  
 91 162.0 133.3 199.9

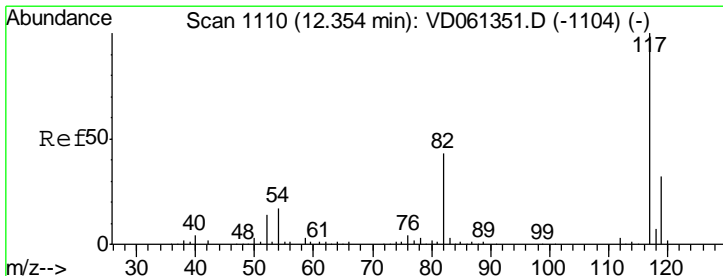
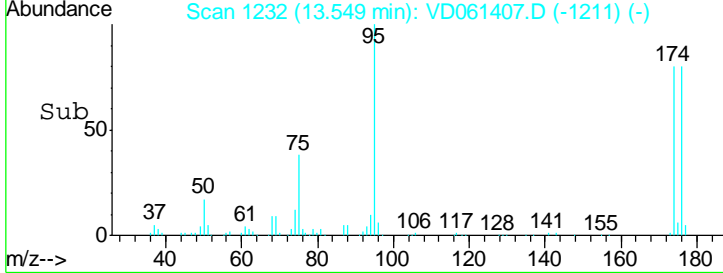
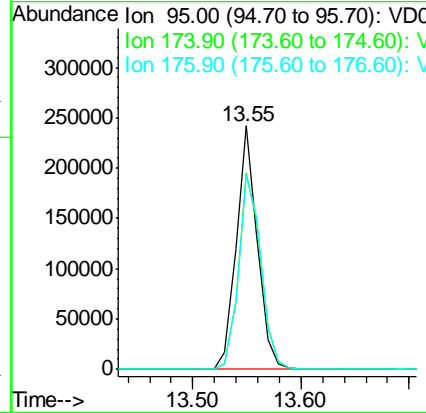
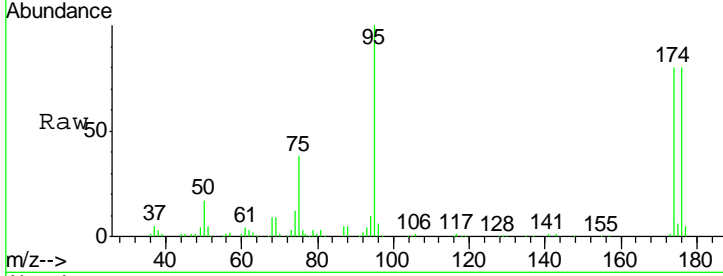




#62  
 4-Bromofluorobenzene  
 Concen: N.D. ug/l  
 RT: 13.55 min Scan# 1232  
 Delta R.T. 0.00 min  
 Lab File: VD061407.D  
 Acq: 28 Mar 2019 22:46

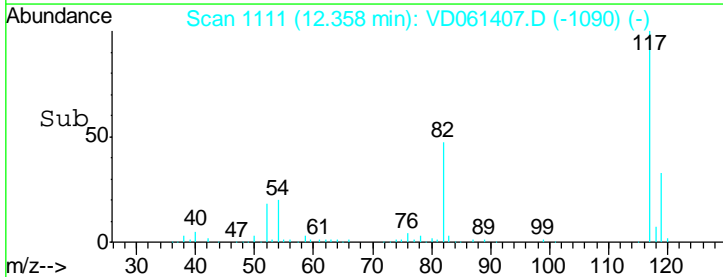
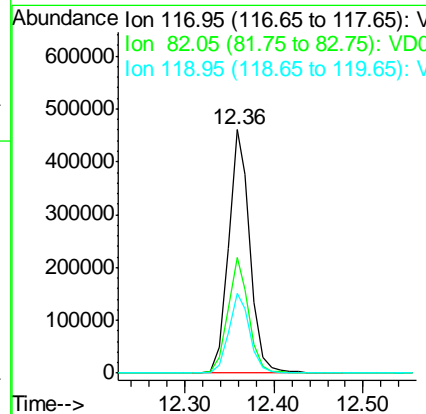
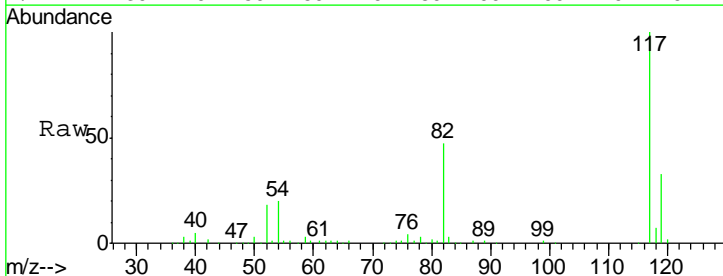
Instrument : MSVOA\_D  
 ClientSampled : STA(20)

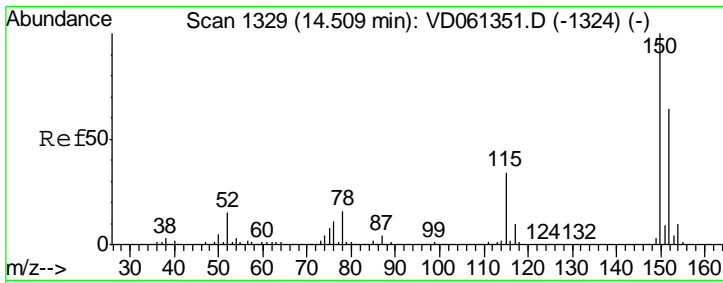
Tgt Ion	Resp	Lower	Upper
95	100		
174	80.4	0.0	178.0
176	79.5	0.0	175.0



#63  
 Chlorobenzene-d5  
 Concen: 50.000 ug/l  
 RT: 12.36 min Scan# 1111  
 Delta R.T. 0.00 min  
 Lab File: VD061407.D  
 Acq: 28 Mar 2019 22:46

Tgt Ion	Resp	Lower	Upper
117	100		
82	47.5	34.4	51.6
119	32.7	25.8	38.6





#72  
 1,4-Dichlorobenzene-d4  
 Concen: 50.000 ug/l  
 RT: 14.51 min Scan# 1330  
 Delta R.T. 0.00 min  
 Lab File: VD061407.D  
 Acq: 28 Mar 2019 22:46

Instrument : MSVOA\_D  
 ClientSampled : S7A(20)

Tot Ion: 152 Resp: 332631

Ion	Ratio	Lower	Upper
152	100		
115	54.9	26.9	80.6
150	154.9	0.0	318.0

