

Data Path : Z:\voasrv\HPCHEM1\MSVOA_D\Data\VD032822\
 Data File : VD072453.D
 Acq On : 28 Mar 2022 19:19
 Operator : VA/SY
 Sample : N2103-03
 Misc : 5.05G/5.00ml/MSVOA_D/SOIL
 ALS Vial : 11 Sample Multiplier: 1

Instrument :
 MSVOA_D
 ClientSampleId :
 RBR-200055

Integration Parameters: RTEINT.P

Integrator: RTE
 Smoothing : ON Filtering: 5
 Sampling : 1 Min Area: 3 % of largest Peak
 Start Thrs: 0.2 Max Peaks: 100
 Stop Thrs : 0 Peak Location: TOP

If leading or trailing edge < 100 prefer < Baseline drop else tangent >
 Peak separation: 5

Method : Z:\voasrv\HPCHEM1\MSVOA_D\Method\82D031122S.M
 Title : SW846 8260

Signal : TIC: VD072453.D\data.ms

peak #	R.T. min	first scan	max scan	last scan	PK TY	peak height	corr. area	corr. % max.	% of total
1	4.956	507	516	517	rBV2	23958	40702	1.48%	0.280%
2	5.997	679	693	702	rBV4	13305	39804	1.44%	0.273%
3	7.914	1008	1019	1024	rBV	294969	725631	26.31%	4.985%
4	7.973	1024	1029	1041	rVB	574672	1264599	45.84%	8.687%
5	8.326	1080	1089	1102	rBV	249571	577609	20.94%	3.968%
6	8.861	1171	1180	1190	rBV	830200	1704724	61.80%	11.711%
7	10.332	1422	1430	1439	rBV	1332088	2429381	88.07%	16.689%
8	11.638	1644	1652	1664	rBV	1426605	2519410	91.33%	17.307%
9	12.626	1810	1820	1829	rVB	1258025	2134642	77.38%	14.664%
10	13.561	1972	1979	1994	rVB	1636160	2758480	100.00%	18.950%
11	13.761	2009	2013	2019	rBV3	20343	38167	1.38%	0.262%
12	14.091	2064	2069	2081	rVB3	24120	55699	2.02%	0.383%
13	14.985	2212	2221	2222	rBV6	22517	43859	1.59%	0.301%
14	15.385	2283	2289	2295	rVB3	51696	94676	3.43%	0.650%
15	15.532	2306	2314	2321	rVB3	13652	32766	1.19%	0.225%
16	16.690	2502	2511	2517	rBV5	38602	96832	3.51%	0.665%

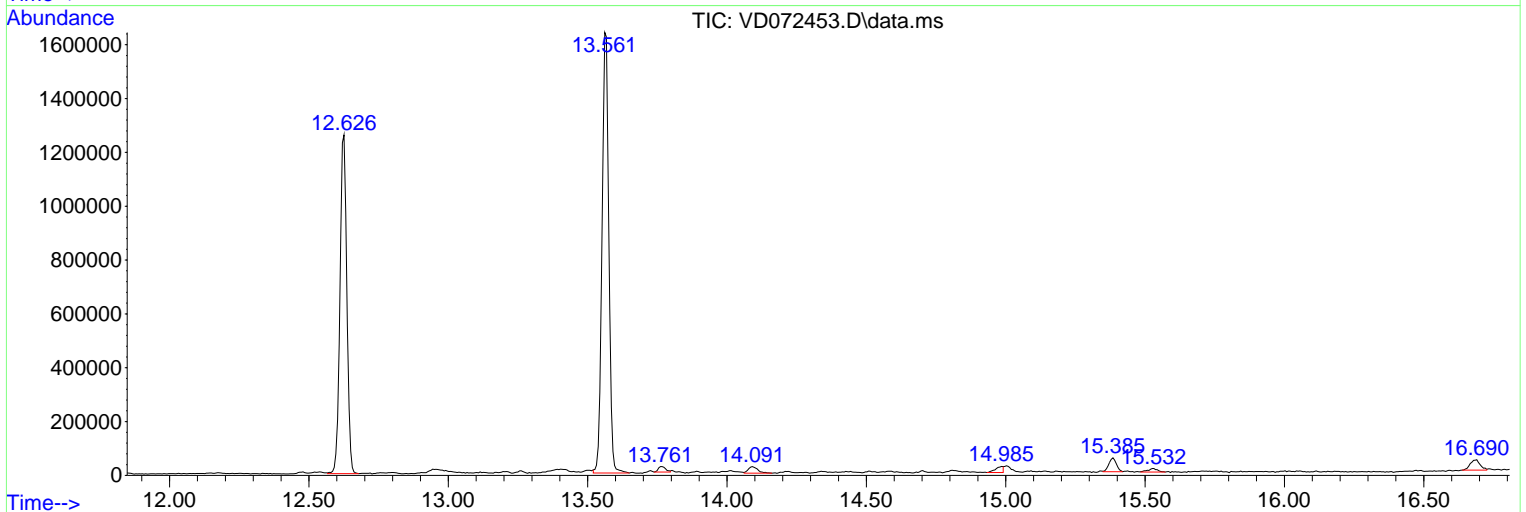
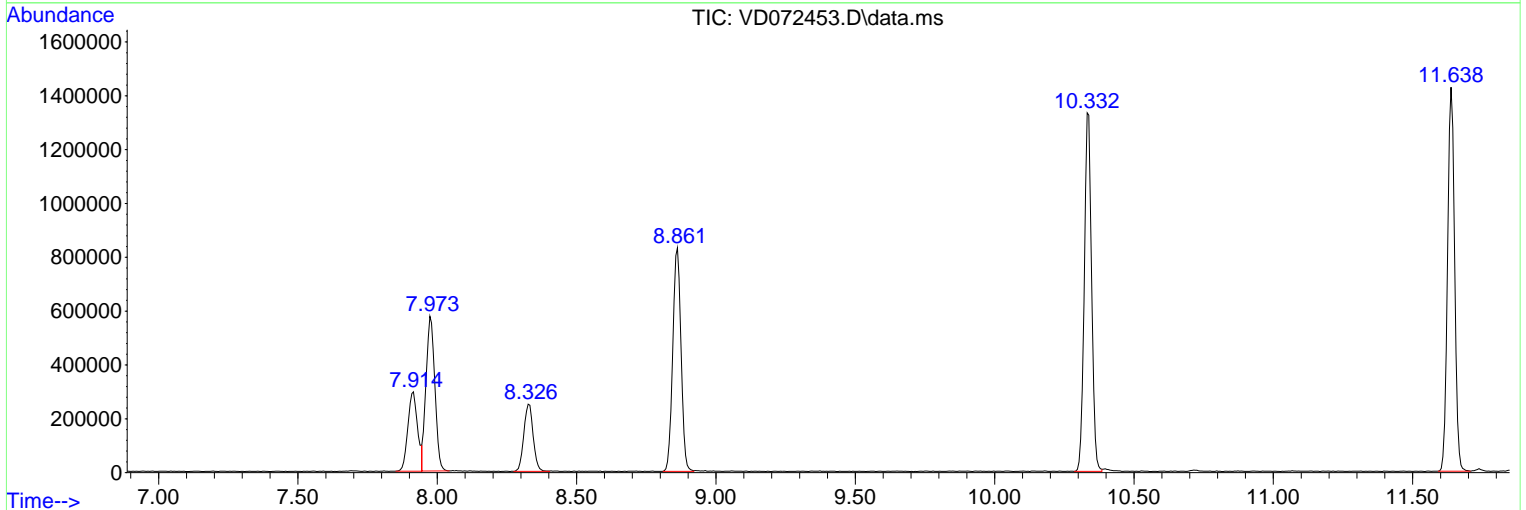
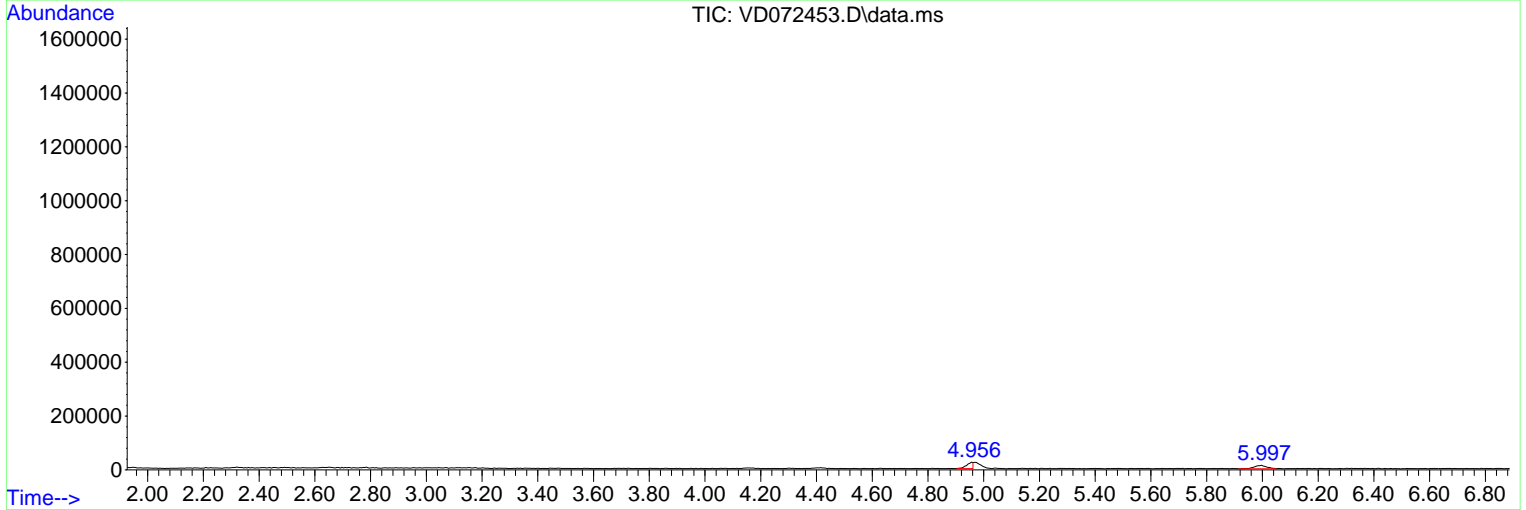
Sum of corrected areas: 14556981

Data Path : Z:\voasrv\HPCHEM1\MSVOA_D\Data\VD032822\
 Data File : VD072453.D
 Acq On : 28 Mar 2022 19:19
 Operator : VA/SY
 Sample : N2103-03
 Misc : 5.05G/5.00ml/MSVOA_D/SOIL
 ALS Vial : 11 Sample Multiplier: 1

Instrument :
 MSVOA_D
 ClientSampleId :
 RBR-200055

Quant Method : Z:\voasrv\HPCHEM1\MSVOA_D\Method\82D031122S.M
 Quant Title : SW846 8260

TIC Library : C:\Database\NIST20.L
 TIC Integration Parameters: LSCINT.P



Library Search Compound Report

Data Path : Z:\voasrv\HPCHEM1\MSVOA_D\Data\VD032822\
Data File : VD072453.D
Acq On : 28 Mar 2022 19:19
Operator : VA/SY
Sample : N2103-03
Misc : 5.05G/5.00ml/MSVOA_D/SOIL
ALS Vial : 11 Sample Multiplier: 1

Instrument :
MSVOA_D
ClientSampleId :
RBR-200055

Quant Method : Z:\voasrv\HPCHEM1\MSVOA_D\Method\82D031122S.M
Quant Title : SW846 8260

TIC Library : C:\Database\NIST20.L
TIC Integration Parameters: LSCINT.P

No Library Search Compounds Detected

Data Path : Z:\voasrv\HPCHEM1\MSVOA_D\Data\VD032822\
Data File : VD072453.D
Acq On : 28 Mar 2022 19:19
Operator : VA/SY
Sample : N2103-03
Misc : 5.05G/5.00ml/MSVOA_D/SOIL
ALS Vial : 11 Sample Multiplier: 1

Instrument :
MSVOA_D
ClientSampleId :
RBR-200055

Quant Method : Z:\voasrv\HPCHEM1\MSVOA_D\Method\82D031122S.M
Quant Title : SW846 8260

TIC Library : C:\Database\NIST20.L
TIC Integration Parameters: LSCINT.P

TIC Top Hit name	RT	EstConc	Units	Response	--Internal Standard--			
					#	RT	Resp	Conc
