

Data Path : Z:\VOASRV\HPCHEM1\MSVOA D\DATA\VD032919\  
 Data File : VD061439.D  
 Acq On : 29 Mar 2019 19:37  
 Operator : VA/AP  
 Sample : K1685-11  
 Misc : 7.47g/5ml/MSVOA D/SOIL  
 ALS Vial : 20 Sample Multiplier: 1

Instrument :  
 MSVOA\_D  
 ClientSampleID :

Quant Time: Mar 29 23:47:04 2019  
 Quant Method : Z:\VOASRV\HPCHEM1\MSVOA\_D\METHOD\82D032719S.M  
 Quant Title : SW846 8260  
 QLast Update : Thu Mar 28 09:22:37 2019  
 Response via : Initial Calibration

Internal Standards	R.T.	QIon	Response	Conc	Units	Dev(Min)
1) Pentafluorobenzene	7.04	168	8044	50.00	ug/l	0.02
34) 1,4-Difluorobenzene	8.21	114	14509	50.00	ug/l	0.02
63) Chlorobenzene-d5	12.37	117	13337	50.00	ug/l	0.01
72) 1,4-Dichlorobenzene-d4	14.51	152	5760	50.00	ug/l	0.00

## System Monitoring Compounds

33) 1,2-Dichloroethane-d4	7.45	65	5200	75.67	ug/l	0.01
Spiked Amount				50.000		
			Recovery	=	151.34%	
35) Dibromofluoromethane	6.92	113	5219	47.07	ug/l	0.02
Spiked Amount				50.000		
			Recovery	=	94.14%	
50) Toluene-d8	10.42	98	14508	54.56	ug/l	0.03
Spiked Amount				50.000		
			Recovery	=	109.12%	
62) 4-Bromofluorobenzene	13.56	95	6639	65.10	ug/l	0.01
Spiked Amount				50.000		
			Recovery	=	130.20%	

## Target Compounds

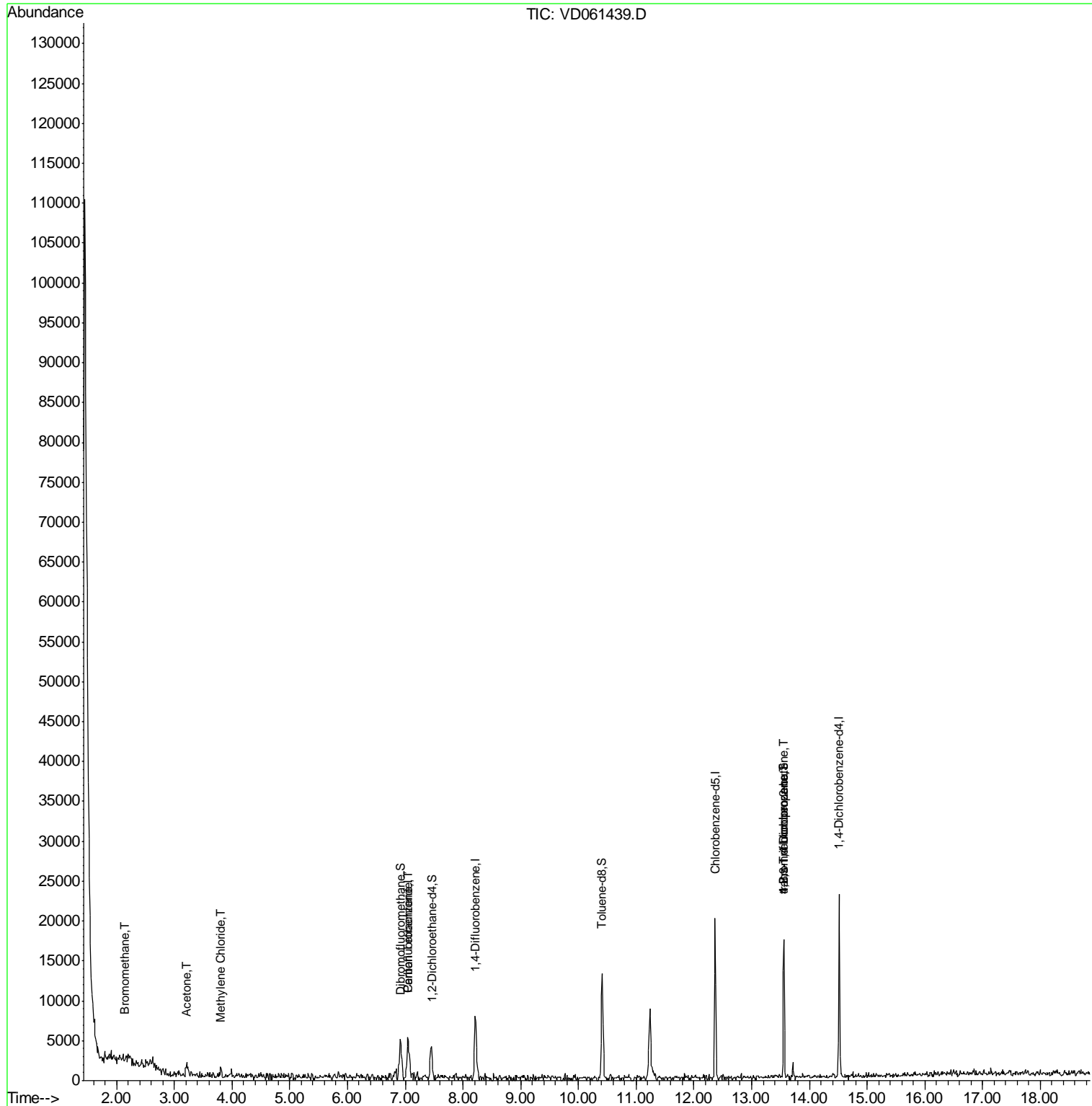
					Qvalue	
5) Bromomethane	2.14	94	393	30.809	ug/l	# 10
16) Acetone	3.21	43	2720	153.983	ug/l	# 48
20) Methylene Chloride	3.81	84	506	3.321	ug/l	# 77
38) Carbon Tetrachloride	7.05	117	180	1.237	ug/l	# 10
76) 1,2,3-Trichloropropane	13.56	75	2035	24.458	ug/l	# 42
81) trans-1,4-Dichloro-2-buten	13.56	75	2358	92.948	ug/l	# 18

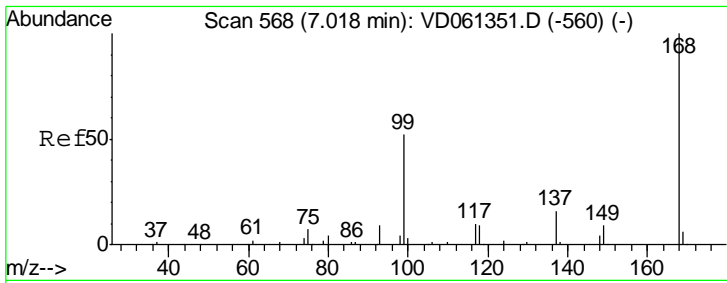
(#) = qualifier out of range (m) = manual integration (+) = signals summed

Data Path : Z:\VOASRV\HPCHEM1\MSVOA D\DATA\VD032919\  
 Data File : VD061439.D  
 Acq On : 29 Mar 2019 19:37  
 Operator : VA/AP  
 Sample : K1685-11  
 Misc : 7.47g/5ml/MSVOA D/SOIL  
 ALS Vial : 20 Sample Multiplier: 1

Instrument :  
 MSVOA\_D  
 ClientSampleId :

Quant Time: Mar 29 23:47:04 2019  
 Quant Method : Z:\VOASRV\HPCHEM1\MSVOA\_D\METHOD\82D032719S.M  
 Quant Title : SW846 8260  
 QLast Update : Thu Mar 28 09:22:37 2019  
 Response via : Initial Calibration

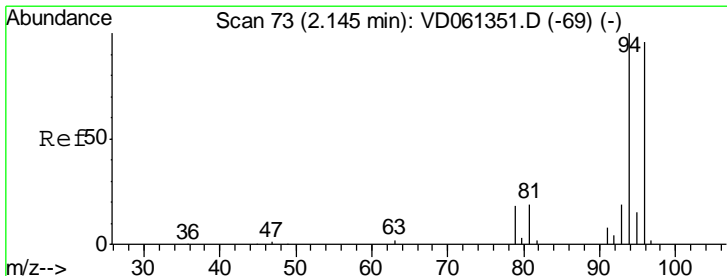
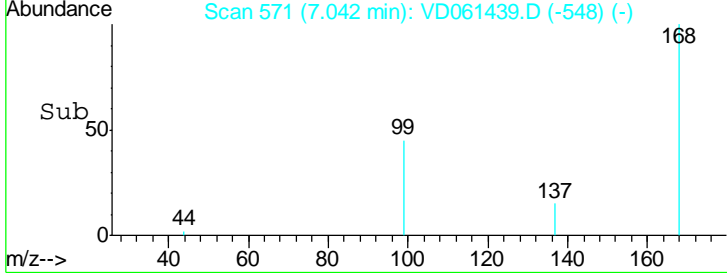
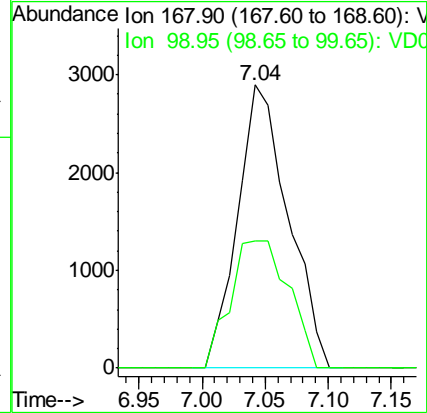
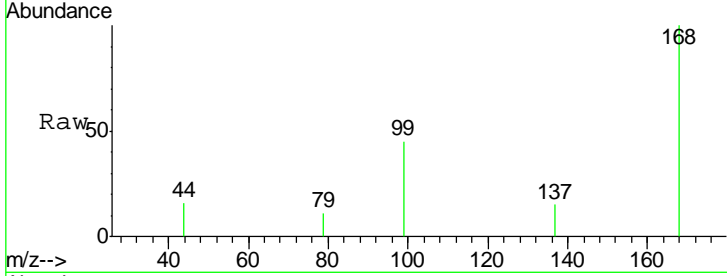




#1  
 Pentafluorobenzene  
 Concen: 50.000 ug/l  
 RT: 7.04 min Scan# 571  
 Delta R.T. 0.02 min  
 Lab File: VD061439.D  
 Acq: 29 Mar 2019 19:37

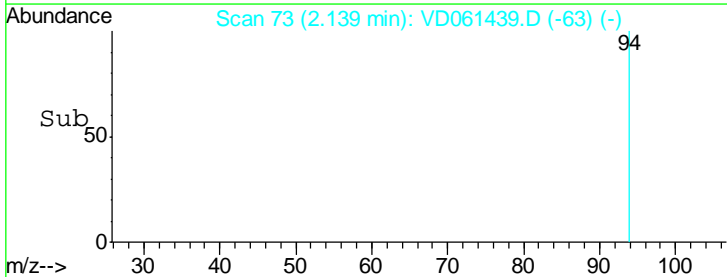
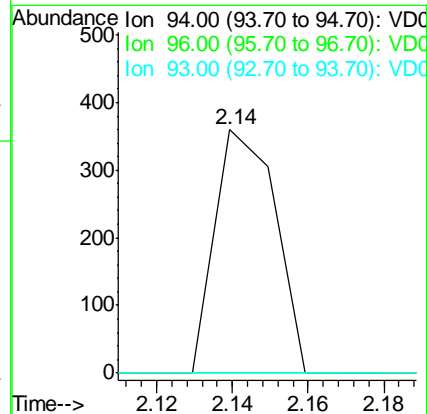
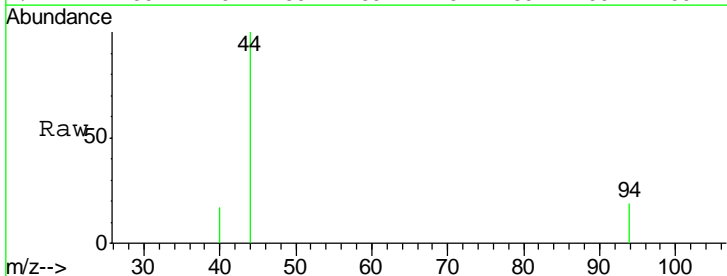
Instrument :  
 MSVOA\_D  
 ClientSampled :

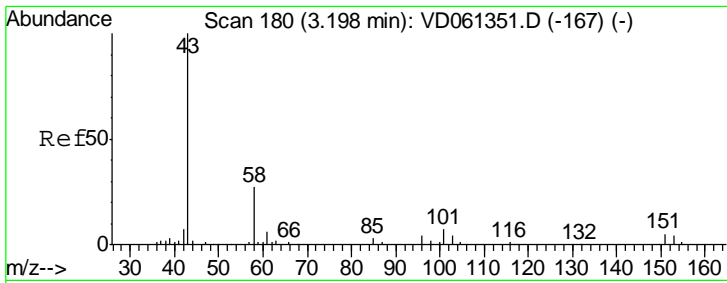
Tgt Ion	Resp	Lower	Upper
168	100		
99	45.0	43.1	64.7



#5  
 Bromomethane  
 Concen: 30.809 ug/l  
 RT: 2.14 min Scan# 73  
 Delta R.T. -0.01 min  
 Lab File: VD061439.D  
 Acq: 29 Mar 2019 19:37

Tgt Ion	Resp	Lower	Upper
94	100		
96	0.0	78.3	117.5#
93	0.0	15.6	23.4#

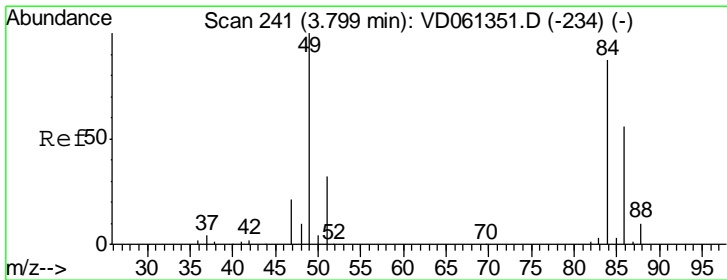
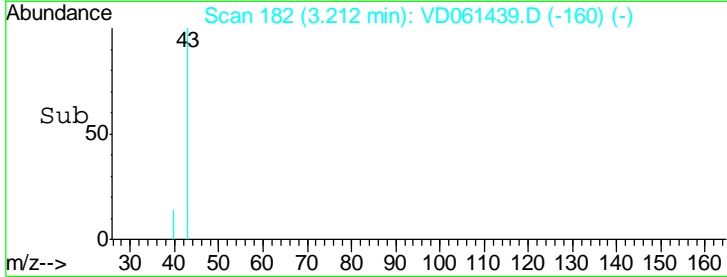
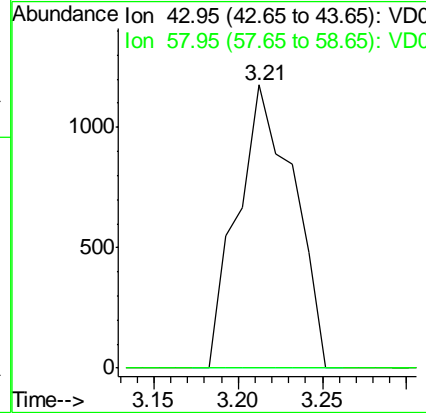
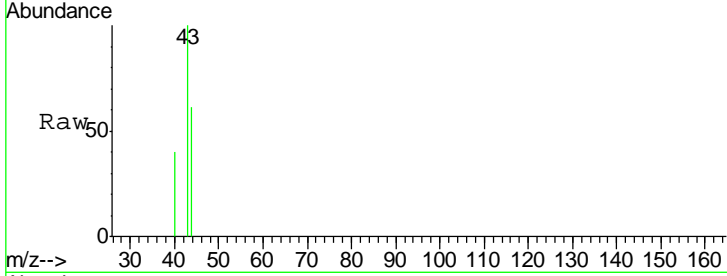




#16  
 Acetone  
 Concen: 153.983 ug/l  
 RT: 3.21 min Scan# 182  
 Delta R.T. 0.01 min  
 Lab File: VD061439.D  
 Acq: 29 Mar 2019 19:37

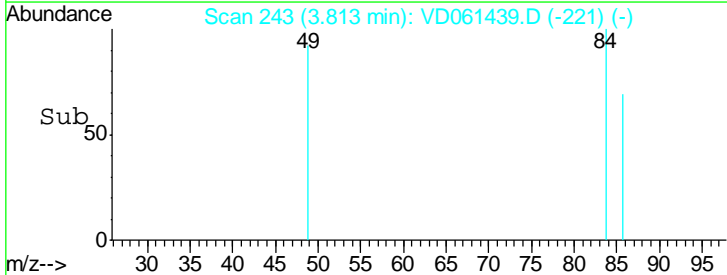
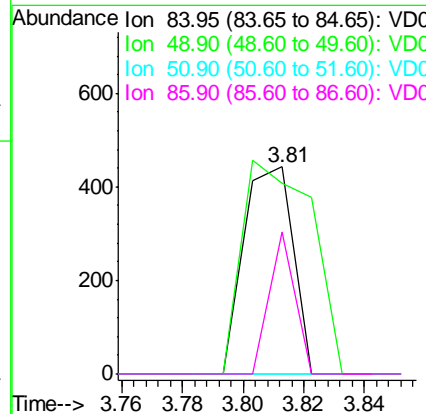
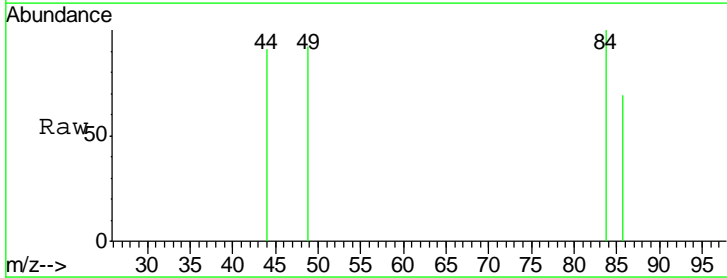
Instrument :  
 MSVOA\_D  
 ClientSampled :

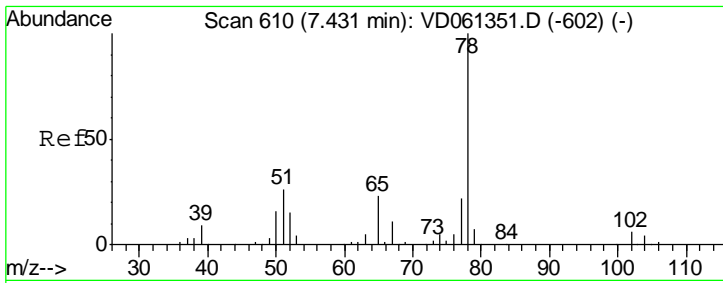
Tgt Ion	Resp	Lower	Upper
43	100		
58	0.0	21.5	32.3#



#20  
 Methylene Chloride  
 Concen: 3.321 ug/l  
 RT: 3.81 min Scan# 243  
 Delta R.T. 0.01 min  
 Lab File: VD061439.D  
 Acq: 29 Mar 2019 19:37

Tgt Ion	Resp	Lower	Upper
84	100		
49	92.1	91.8	137.8
51	0.0	29.8	44.8#
86	68.6	51.8	77.6

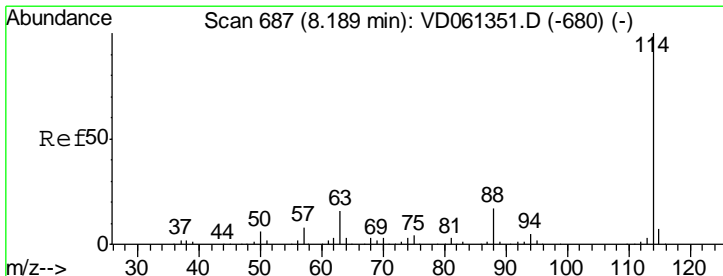
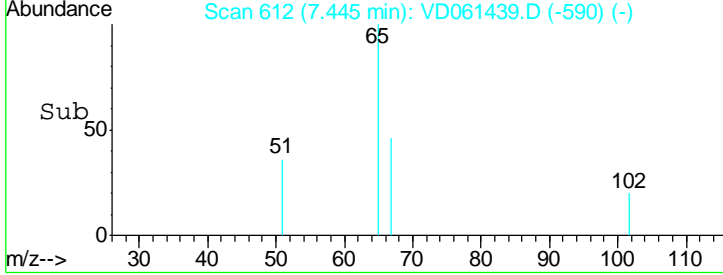
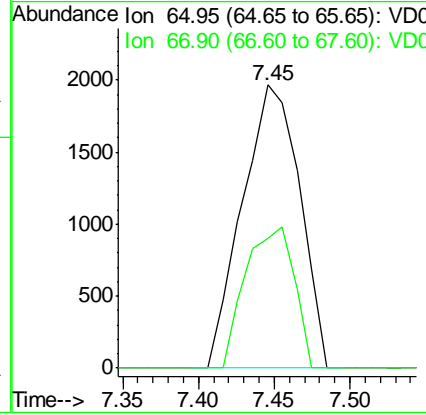
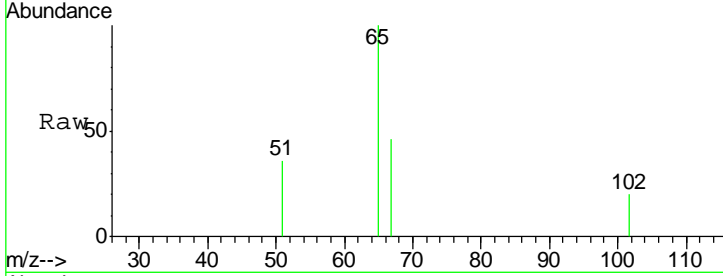




#33  
 1,2-Dichloroethane-d4  
 Concen: N.D. ug/l  
 RT: 7.45 min Scan# 612  
 Delta R.T. 0.01 min  
 Lab File: VD061439.D  
 Acq: 29 Mar 2019 19:37

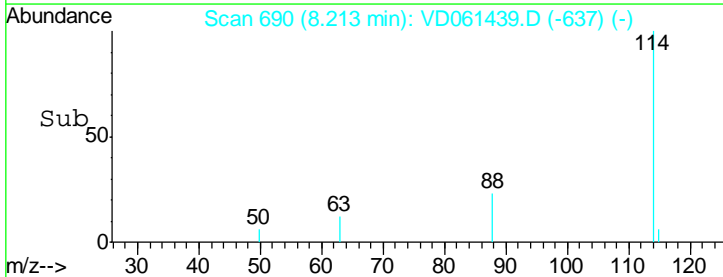
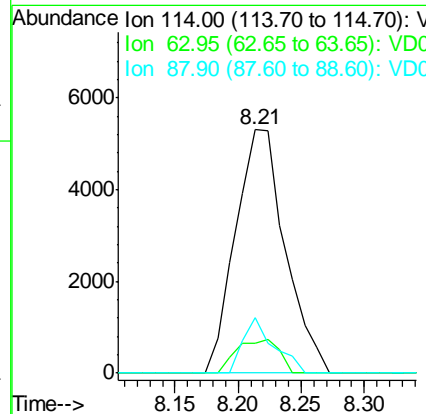
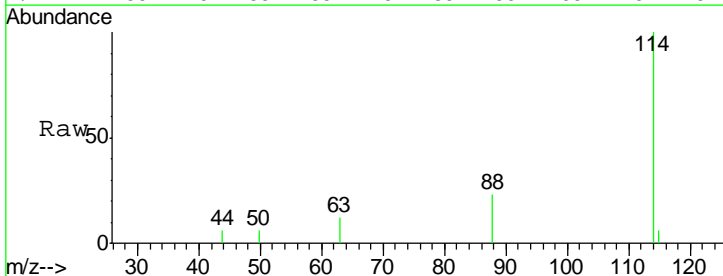
Instrument :  
 MSVOA\_D  
 ClientSampled :

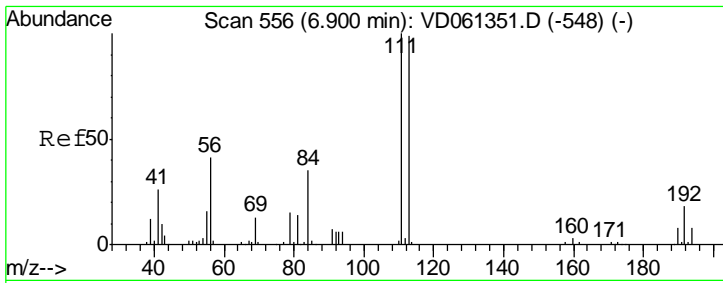
Tgt Ion	Resp	Lower	Upper
65	100		
67	45.8	0.0	99.8



#34  
 1,4-Difluorobenzene  
 Concen: 50.000 ug/l  
 RT: 8.21 min Scan# 690  
 Delta R.T. 0.02 min  
 Lab File: VD061439.D  
 Acq: 29 Mar 2019 19:37

Tgt Ion	Resp	Lower	Upper
114	100		
63	12.5	0.0	31.6
88	22.9	0.0	33.4

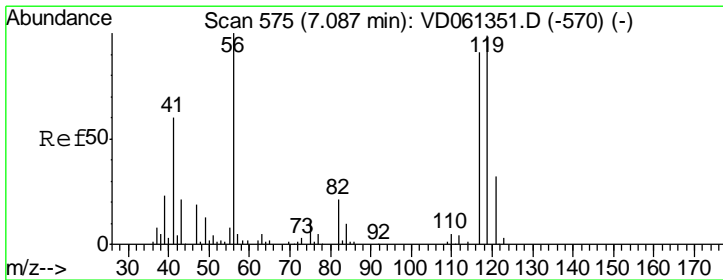
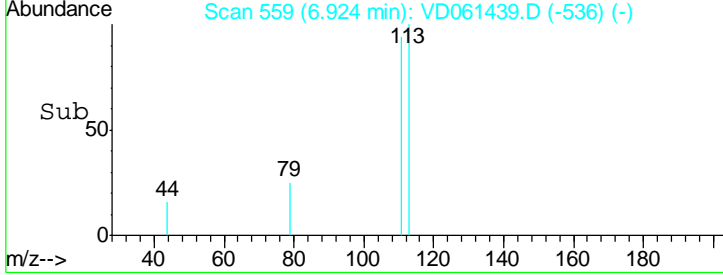
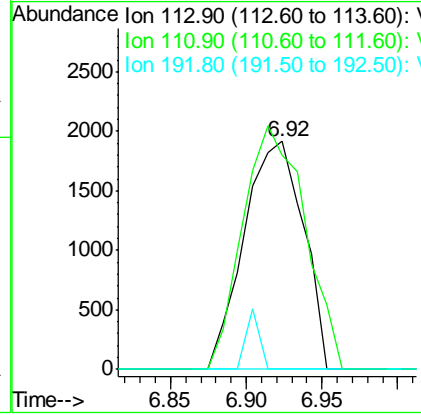
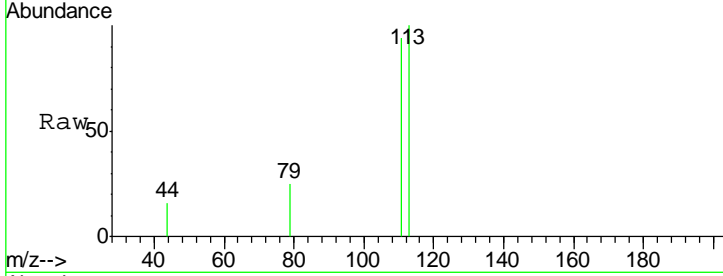




#35  
 Dibromofluoromethane  
 Concen: 50.000 ug/l  
 RT: 6.92 min Scan# 559  
 Delta R.T. 0.02 min  
 Lab File: VD061439.D  
 Acq: 29 Mar 2019 19:37

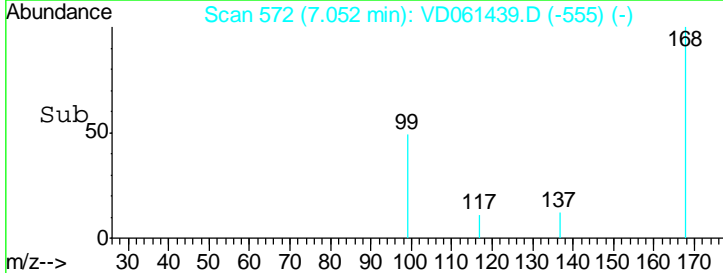
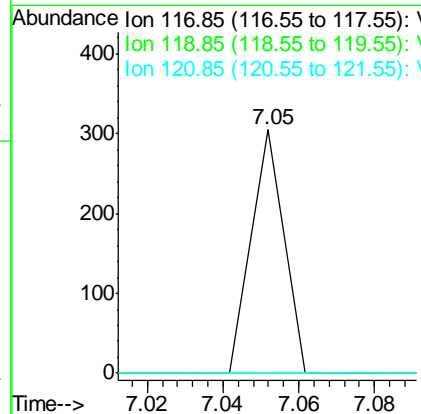
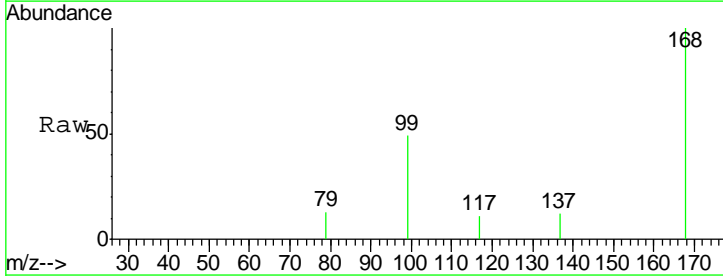
Instrument :  
 MSVOA\_D  
 ClientSampled :

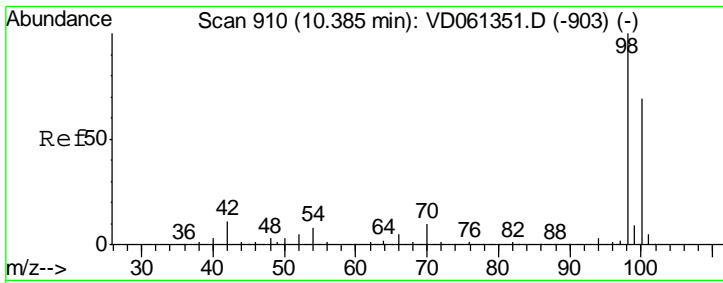
Tgt Ion	Resp	Lower	Upper
113	100		
111	93.8	81.0	121.6
192	0.0	14.4	21.6#



#38  
 Carbon Tetrachloride  
 Concen: 1.237 ug/l  
 RT: 7.05 min Scan# 572  
 Delta R.T. -0.04 min  
 Lab File: VD061439.D  
 Acq: 29 Mar 2019 19:37

Tgt Ion	Resp	Lower	Upper
117	100		
119	0.0	80.1	120.1#
121	0.0	25.6	38.4#

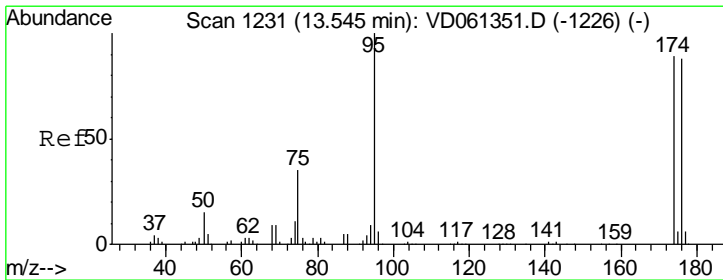
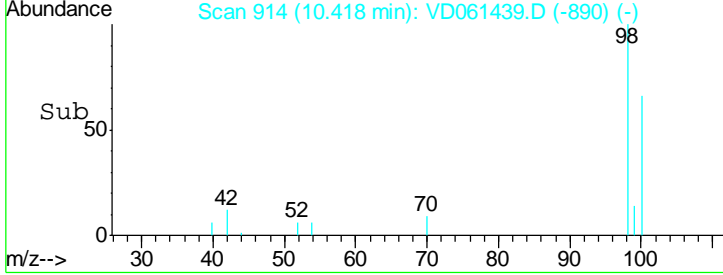
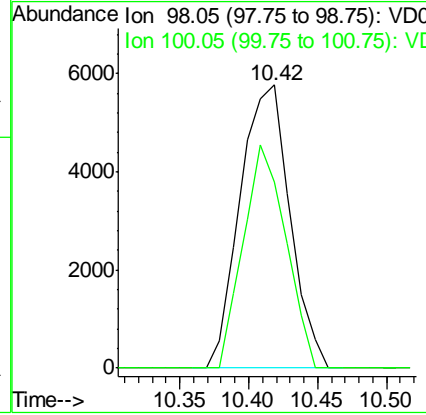
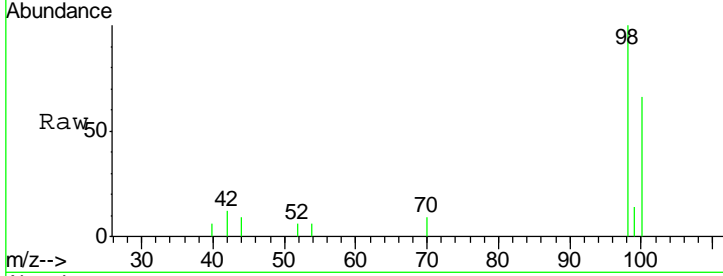




#50  
 Toluene-d8  
 Concen: N.D. ug/l  
 RT: 10.42 min Scan# 914  
 Delta R.T. 0.03 min  
 Lab File: VD061439.D  
 Acq: 29 Mar 2019 19:37

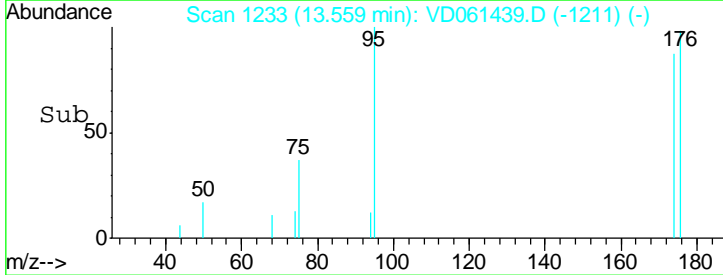
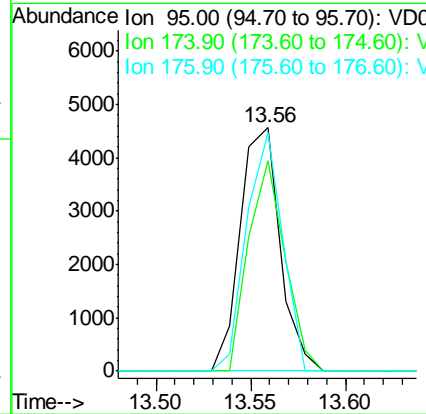
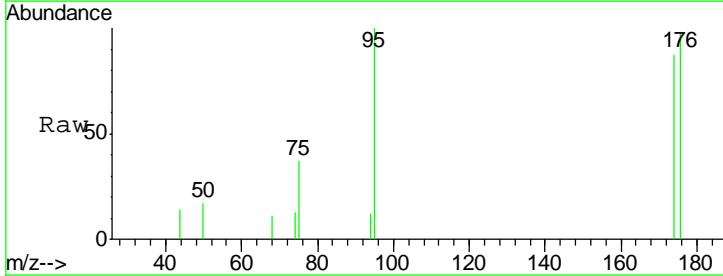
Instrument : MSVOA\_D  
 ClientSampled :

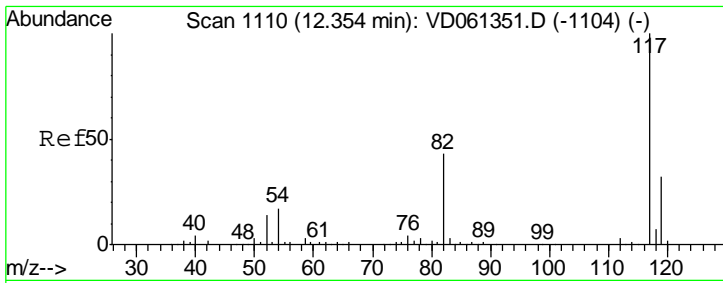
Tgt Ion	Resp	Lower	Upper
98	14508		
98	100		
100	65.6	56.2	84.2



#62  
 4-Bromofluorobenzene  
 Concen: N.D. ug/l  
 RT: 13.56 min Scan# 1233  
 Delta R.T. 0.01 min  
 Lab File: VD061439.D  
 Acq: 29 Mar 2019 19:37

Tgt Ion	Resp	Lower	Upper
95	6639		
95	100		
174	86.6	0.0	178.0
176	98.0	0.0	175.0

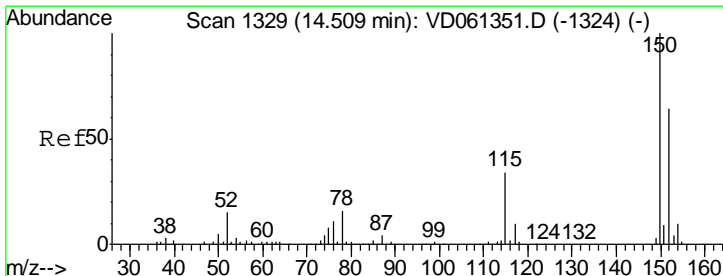
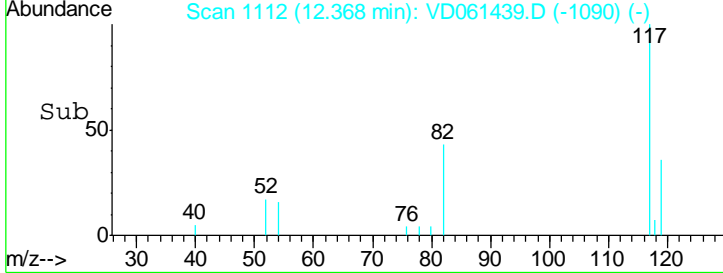
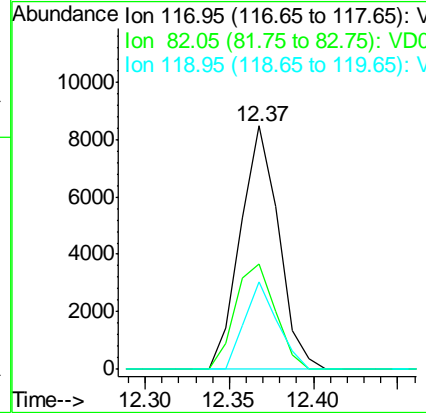
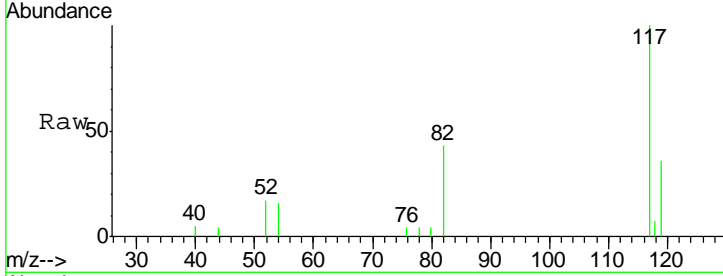




#63  
 Chlorobenzene-d5  
 Concen: 50.000 ug/l  
 RT: 12.37 min Scan# 1112  
 Delta R.T. 0.01 min  
 Lab File: VD061439.D  
 Acq: 29 Mar 2019 19:37

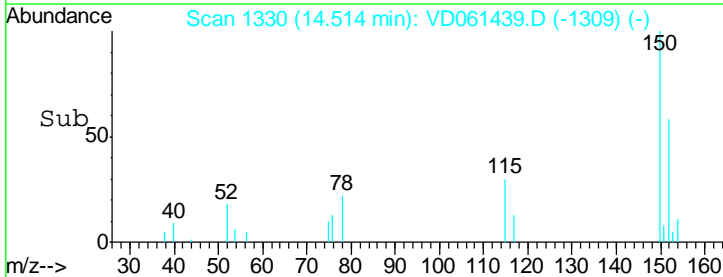
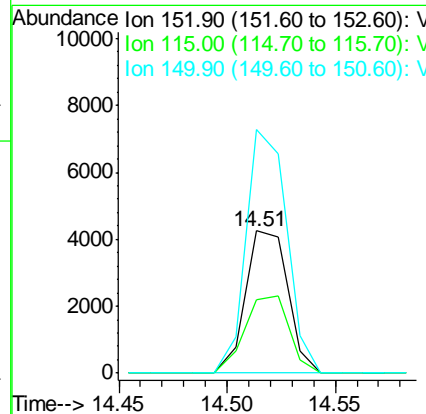
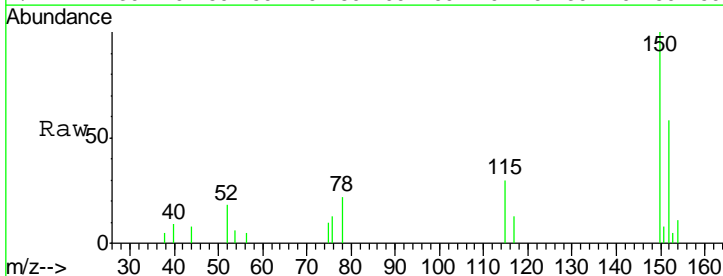
Instrument : MSVOA\_D  
 ClientSampled :

Tgt Ion	Resp	Lower	Upper
117	13337		
82	43.2	34.4	51.6
119	35.7	25.8	38.6

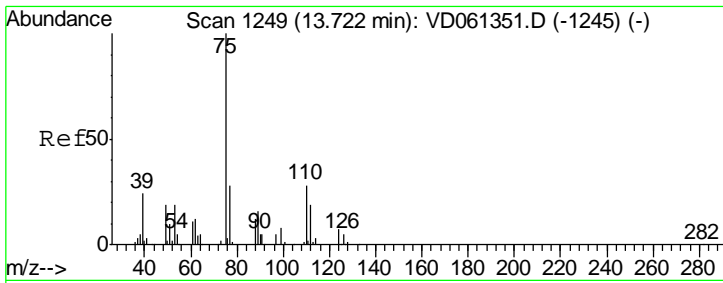


#72  
 1,4-Dichlorobenzene-d4  
 Concen: 50.000 ug/l  
 RT: 14.51 min Scan# 1330  
 Delta R.T. 0.00 min  
 Lab File: VD061439.D  
 Acq: 29 Mar 2019 19:37

Tgt Ion	Resp	Lower	Upper
152	5760		
115	52.0	26.9	80.6
150	171.0	0.0	318.0



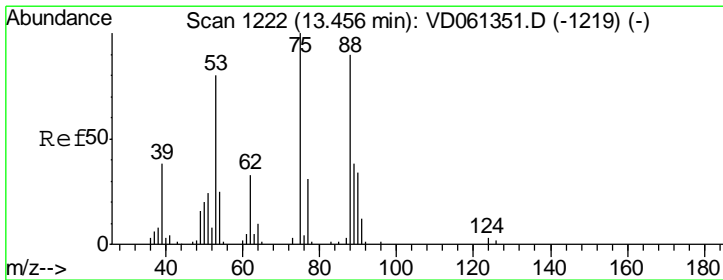
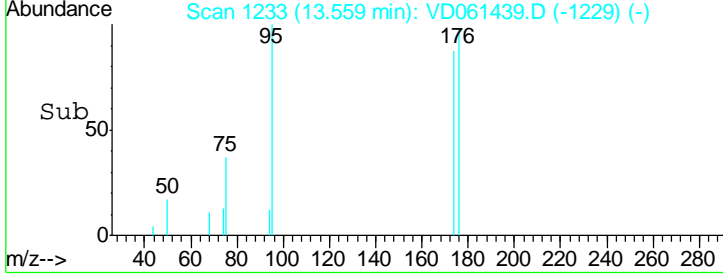
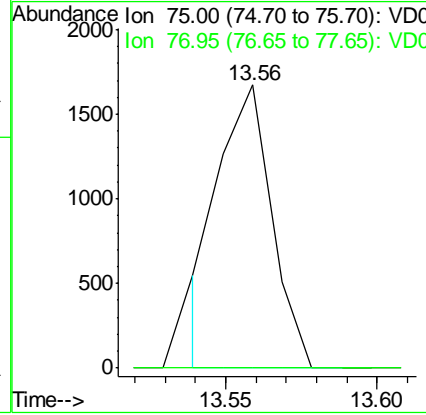
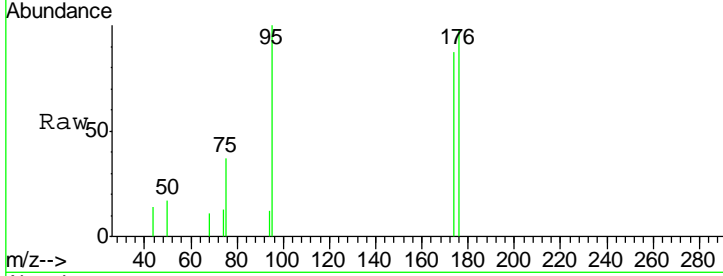




#76  
 1,2,3-Trichloropropane  
 Concen: 24.458 ug/l  
 RT: 13.56 min Scan# 1233  
 Delta R.T. -0.16 min  
 Lab File: VD061439.D  
 Acq: 29 Mar 2019 19:37

Instrument :  
 MSVOA\_D  
 ClientSampled :

Tgt Ion	Resp	Lower	Upper
75	100		
77	0.0	16.2	48.5#



#81  
 trans-1,4-Dichloro-2-butene  
 Concen: 92.948 ug/l  
 RT: 13.56 min Scan# 1233  
 Delta R.T. 0.10 min  
 Lab File: VD061439.D  
 Acq: 29 Mar 2019 19:37

Tgt Ion	Resp	Lower	Upper
75	100		
53	0.0	63.8	95.8#
89	0.0	30.5	45.7#

