

Data Path : Z:\voasrv\HPCHEM1\MSVOA\_D\Data\VD032923\  
 Data File : VD075533.D  
 Acq On : 29 Mar 2023 15:36  
 Operator : KP/SY  
 Sample : 02121-12  
 Misc : 5.35G/10.00ml/MSVOA\_D/SOIL  
 ALS Vial : 6 Sample Multiplier: 1

Instrument :  
 MSVOA\_D  
 ClientSampleId :  
 C1185

Integration Parameters: LSCINT.P

Integrator: RTE  
 Smoothing : OFF  
 Sampling : 1  
 Start Thrs : 0.2  
 Stop Thrs : 0

Filtering: 5  
 Min Area: 0 % of largest Peak  
 Max Peaks: 100  
 Peak Location: TOP

If leading or trailing edge < 100 prefer < Baseline drop else tangent >  
 Peak separation: 5

Method : Z:\voasrv\HPCHEM1\MSVOA\_D\Method\SFAMDLM030123SMA.M  
 Title : SFAM01.0

Signal : TIC: VD075533.D\data.ms

peak #	R.T. min	first scan	max scan	last scan	PK TY	peak height	corr. area	corr. % max.	% of total
1	1.628	6	7	9	rVB	936	549	0.06%	0.007%
2	1.734	14	25	38	rVV	416328	839874	90.48%	10.582%
3	2.052	76	79	80	rBV	501	448	0.05%	0.006%
4	2.275	112	117	126	rVB	135207	200170	21.57%	2.522%
5	2.805	201	207	217	rVB	126177	237241	25.56%	2.989%
6	3.346	298	299	301	rVB	944	513	0.06%	0.006%
7	3.434	312	314	317	rVB2	779	673	0.07%	0.008%
8	3.458	317	318	320	rBV2	752	553	0.06%	0.007%
9	3.634	346	348	351	rVV2	445	485	0.05%	0.006%
10	3.693	356	358	361	rVV2	648	748	0.08%	0.009%
11	3.722	361	363	366	rVV2	498	450	0.05%	0.006%
12	3.922	386	397	407	rBV	103862	276082	29.74%	3.479%
13	4.222	446	448	449	rBV	1088	482	0.05%	0.006%
14	4.528	498	500	502	rVB	517	446	0.05%	0.006%
15	4.716	531	532	534	rBV	686	488	0.05%	0.006%
16	4.805	537	547	559	rVB4	15627	49977	5.38%	0.630%
17	4.981	576	577	580	rBV	599	467	0.05%	0.006%
18	5.069	589	592	595	rVV2	778	984	0.11%	0.012%
19	5.240	620	621	623	rBV	905	547	0.06%	0.007%
20	5.675	693	695	697	rBV	543	509	0.05%	0.006%
21	5.746	705	707	709	rBV2	511	526	0.06%	0.007%
22	5.840	719	723	730	rVB2	2350	4344	0.47%	0.055%
23	6.063	759	761	764	rVV2	777	470	0.05%	0.006%
24	6.199	782	784	787	rBV	408	618	0.07%	0.008%
25	6.351	809	810	814	rVB2	807	827	0.09%	0.010%
26	6.516	836	838	841	rVB2	665	630	0.07%	0.008%
27	6.604	849	853	856	rBV2	665	992	0.11%	0.012%
28	6.887	899	901	904	rVB2	409	465	0.05%	0.006%
29	6.987	909	918	927	rBV2	20286	55514	5.98%	0.699%
30	7.210	954	956	959	rVB	521	457	0.05%	0.006%
31	7.246	959	962	965	rBV	406	494	0.05%	0.006%
32	7.287	965	969	970	rBV2	336	449	0.05%	0.006%
33	7.346	976	979	980	rBV	524	526	0.06%	0.007%
34	7.398	985	988	989	rBV	606	453	0.05%	0.006%
35	7.569	1007	1017	1033	rVV2	178650	455346	49.06%	5.737%
36	7.675	1033	1035	1036	rVB	744	480	0.05%	0.006%

Data Path : Z:\voasrv\HPCHEM1\MSVOA\_D\Data\VD032923\  
 Data File : VD075533.D  
 Acq On : 29 Mar 2023 15:36  
 Operator : KP/SY  
 Sample : 02121-12  
 Misc : 5.35G/10.00ml/MSVOA\_D/SOIL  
 ALS Vial : 6 Sample Multiplier: 1

Instrument :  
 MSVOA\_D  
 ClientSampleId :  
 C1185

Integration Parameters: LSCINT.P

Integrator: RTE  
 Smoothing : OFF  
 Sampling : 1  
 Start Thrs: 0.2  
 Stop Thrs : 0

Filtering: 5  
 Min Area: 0 % of largest Peak  
 Max Peaks: 100  
 Peak Location: TOP

If leading or trailing edge < 100 prefer < Baseline drop else tangent >  
 Peak separation: 5

Method : Z:\voasrv\HPCHEM1\MSVOA\_D\Method\SFAMDL030123SMA.M  
 Title : SFAM01.0

37	7.816	1057	1059	1060	rBV	656	558	0.06%	0.007%
38	8.057	1099	1100	1103	rBV	511	443	0.05%	0.006%
39	8.204	1115	1125	1140	rBV2	319883	928202	100.00%	11.695%
40	8.616	1191	1195	1197	rVV2	676	755	0.08%	0.010%
41	8.781	1214	1223	1236	rBV	323646	655790	70.65%	8.263%
42	8.881	1238	1240	1242	rBV3	625	641	0.07%	0.008%
43	9.016	1259	1263	1267	rVB2	1583	1983	0.21%	0.025%
44	9.210	1286	1296	1306	rVV	223192	455058	49.03%	5.734%
45	9.287	1306	1309	1316	rVB3	1242	2098	0.23%	0.026%
46	9.651	1370	1371	1375	rVB2	586	509	0.05%	0.006%
47	9.710	1378	1381	1382	rBV2	756	784	0.08%	0.010%
48	9.845	1396	1404	1408	rVB3	2240	4601	0.50%	0.058%
49	9.981	1420	1427	1435	rBV	111624	203097	21.88%	2.559%
50	10.198	1460	1464	1465	rVV2	767	835	0.09%	0.011%
51	10.269	1468	1476	1491	rVV	432668	787561	84.85%	9.923%
52	10.528	1513	1520	1528	rVB2	71761	126163	13.59%	1.590%
53	10.587	1528	1530	1533	rVB2	533	458	0.05%	0.006%
54	10.669	1536	1544	1550	rBV2	8186	15175	1.63%	0.191%
55	10.745	1555	1557	1560	rBV2	609	518	0.06%	0.007%
56	10.810	1567	1568	1570	rBV	794	462	0.05%	0.006%
57	10.881	1573	1580	1589	rBV	78244	136496	14.71%	1.720%
58	11.034	1600	1606	1609	rBV2	1216	1151	0.12%	0.015%
59	11.092	1615	1616	1619	rVB2	697	436	0.05%	0.005%
60	11.139	1621	1624	1625	rBV	792	767	0.08%	0.010%
61	11.216	1635	1637	1639	rBV	756	634	0.07%	0.008%
62	11.363	1660	1662	1664	rVB	1620	1049	0.11%	0.013%
63	11.481	1679	1682	1685	rBV	467	551	0.06%	0.007%
64	11.510	1685	1687	1688	rBV	752	428	0.05%	0.005%
65	11.581	1692	1699	1709	rBV	444529	772081	83.18%	9.728%
66	11.786	1732	1734	1738	rBV2	493	423	0.05%	0.005%
67	11.939	1758	1760	1762	rBV	601	499	0.05%	0.006%
68	11.981	1765	1767	1770	rBV2	439	533	0.06%	0.007%
69	12.057	1778	1780	1783	rBV	585	488	0.05%	0.006%
70	12.186	1801	1802	1806	rVB2	582	432	0.05%	0.005%
71	12.375	1833	1834	1837	rBV	595	478	0.05%	0.006%
72	12.469	1847	1850	1853	rBV2	554	653	0.07%	0.008%
73	12.498	1853	1855	1859	rVB2	664	774	0.08%	0.010%
74	12.545	1861	1863	1864	rVV	759	579	0.06%	0.007%
75	12.581	1864	1869	1873	rVV3	9166	13198	1.42%	0.166%
76	12.651	1875	1881	1889	rVB	176655	307489	33.13%	3.874%

Data Path : Z:\voasrv\HPCHEM1\MSVOA\_D\Data\VD032923\  
 Data File : VD075533.D  
 Acq On : 29 Mar 2023 15:36  
 Operator : KP/SY  
 Sample : 02121-12  
 Misc : 5.35G/10.00ml/MSVOA\_D/SOIL  
 ALS Vial : 6 Sample Multiplier: 1

Instrument :  
 MSVOA\_D  
 ClientSampleId :  
 C1185

Integration Parameters: LSCINT.P

Integrator: RTE  
 Smoothing : OFF Filtering: 5  
 Sampling : 1 Min Area: 0 % of largest Peak  
 Start Thrs: 0.2 Max Peaks: 100  
 Stop Thrs : 0 Peak Location: TOP

If leading or trailing edge < 100 prefer < Baseline drop else tangent >  
 Peak separation: 5

Method : Z:\voasrv\HPCHEM1\MSVOA\_D\Method\SFAMDLM030123SMA.M  
 Title : SFAM01.0

77	12.751	1897	1898	1902	rBV	483	527	0.06%	0.007%
78	12.875	1917	1919	1922	rBV2	401	536	0.06%	0.007%
79	13.075	1951	1953	1955	rBV3	1028	857	0.09%	0.011%
80	13.157	1963	1967	1968	rBV2	881	1074	0.12%	0.014%
81	13.375	2000	2004	2005	rBV2	1318	1053	0.11%	0.013%
82	13.522	2021	2029	2037	rBV	393255	645713	69.57%	8.136%
83	13.616	2042	2045	2051	rVV4	3260	5517	0.59%	0.070%
84	13.669	2053	2054	2057	rBV3	663	526	0.06%	0.007%
85	13.733	2062	2065	2066	rBV2	688	693	0.07%	0.009%
86	13.816	2072	2079	2092	rBV	413681	681027	73.37%	8.581%
87	13.916	2094	2096	2097	rBV	756	625	0.07%	0.008%
88	13.945	2099	2101	2102	rVV	725	503	0.05%	0.006%
89	13.986	2106	2108	2111	rVV2	606	594	0.06%	0.007%
90	14.051	2114	2119	2127	rVB2	7470	12923	1.39%	0.163%
91	14.275	2147	2157	2164	rBV5	3145	7716	0.83%	0.097%
92	14.392	2172	2177	2181	rVB3	2272	3309	0.36%	0.042%
93	14.480	2191	2192	2194	rBV2	871	782	0.08%	0.010%
94	14.739	2235	2236	2239	rBV2	781	931	0.10%	0.012%
95	15.410	2347	2350	2355	rVV2	4422	6403	0.69%	0.081%
96	15.480	2358	2362	2366	rVV3	2178	3254	0.35%	0.041%
97	15.527	2368	2370	2371	rBV	872	440	0.05%	0.006%
98	16.004	2449	2451	2452	rVB2	950	433	0.05%	0.005%
99	16.092	2464	2466	2470	rVB2	950	942	0.10%	0.012%
100	16.139	2470	2474	2477	rBV3	914	1250	0.13%	0.016%

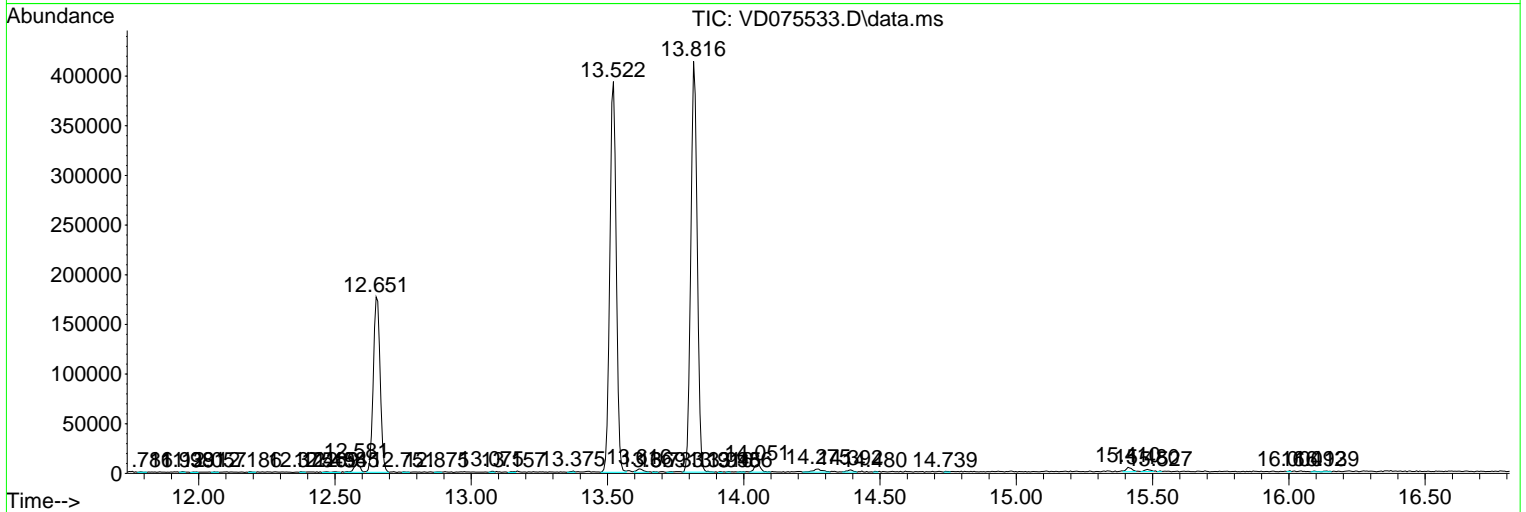
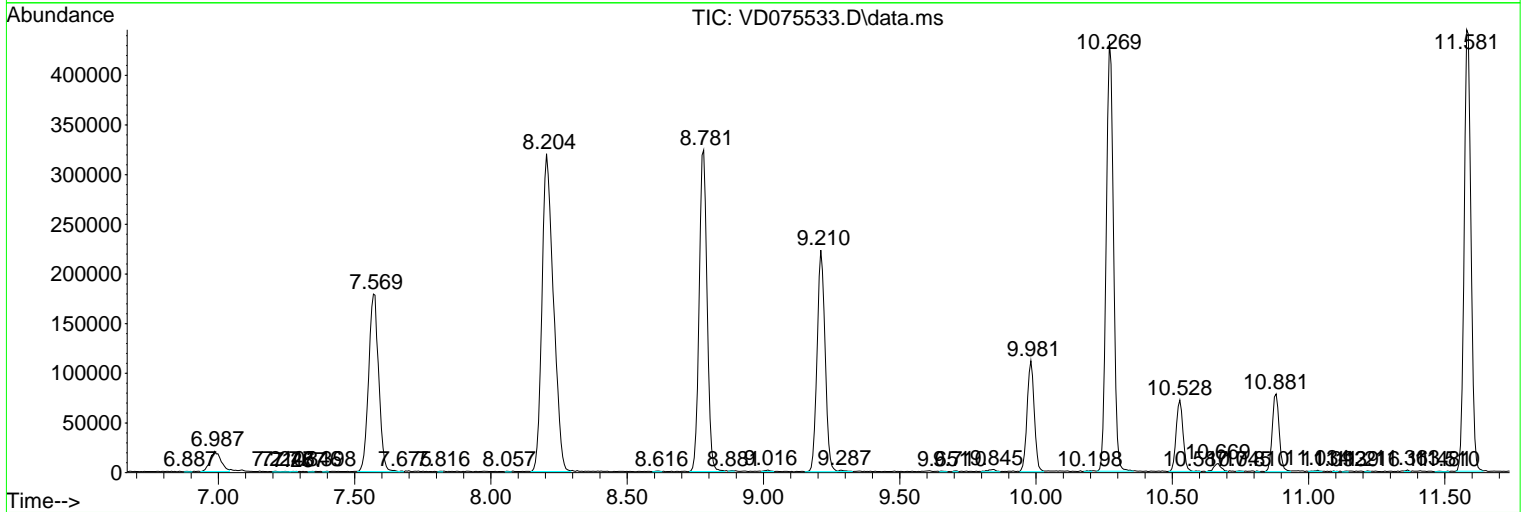
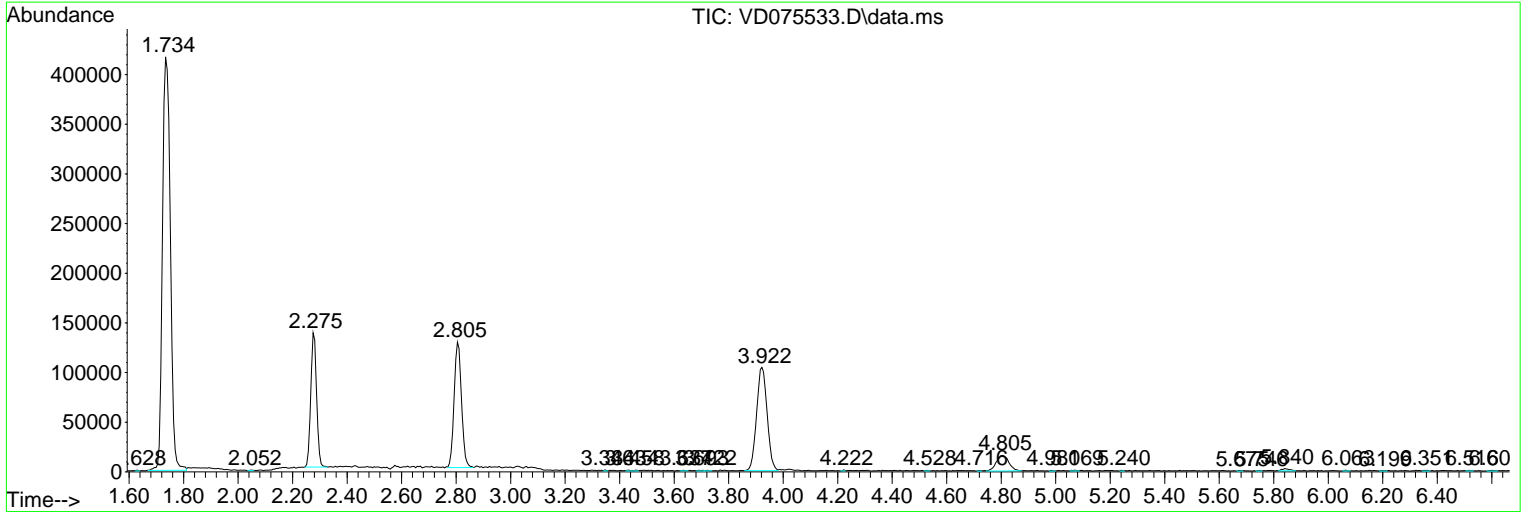
Sum of corrected areas: 7936735

Data Path : Z:\voasrv\HPCHEM1\MSVOA\_D\Data\VD032923\  
 Data File : VD075533.D  
 Acq On : 29 Mar 2023 15:36  
 Operator : KP/SY  
 Sample : 02121-12  
 Misc : 5.35G/10.00ml/MSVOA\_D/SOIL  
 ALS Vial : 6 Sample Multiplier: 1

Instrument :  
 MSVOA\_D  
 ClientSampleId :  
 C1185

Quant Method : Z:\voasrv\HPCHEM1\MSVOA\_D\Method\SFAMDLM030123SMA.M  
 Quant Title : SFAM01.0

TIC Library : C:\Database\NIST0.L  
 TIC Integration Parameters: LSCINT.P



Library Search Compound Report

Data Path : Z:\voasrv\HPCHEM1\MSVOA\_D\Data\VD032923\  
Data File : VD075533.D  
Acq On : 29 Mar 2023 15:36  
Operator : KP/SY  
Sample : 02121-12  
Misc : 5.35G/10.00ml/MSVOA\_D/SOIL  
ALS Vial : 6 Sample Multiplier: 1

Instrument :  
MSVOA\_D  
ClientSampleId :  
C1185

Quant Method : Z:\voasrv\HPCHEM1\MSVOA\_D\Method\SFAMDLM030123SMA.M  
Quant Title : SFAM01.0

TIC Library : C:\Database\NIST20.L  
TIC Integration Parameters: LSCINT.P

No Library Search Compounds Detected

\*\*\*\*\*

Data Path : Z:\voasrv\HPCHEM1\MSVOA\_D\Data\VD032923\  
Data File : VD075533.D  
Acq On : 29 Mar 2023 15:36  
Operator : KP/SY  
Sample : 02121-12  
Misc : 5.35G/10.00ml/MSVOA\_D/SOIL  
ALS Vial : 6 Sample Multiplier: 1

Instrument :  
MSVOA\_D  
ClientSampleId :  
C1185

Quant Method : Z:\voasrv\HPCHEM1\MSVOA\_D\Method\SFAMDLM030123SMA.M  
Quant Title : SFAM01.0

TIC Library : C:\Database\NIST0.L  
TIC Integration Parameters: LSCINT.P

TIC Top Hit name	RT	EstConc	Units	Response	--Internal Standard--		
					#	RT	Resp Conc

---