

Data Path : Z:\VOASRV\HPCHEM1\MSVOA D\DATA\VD040219\
 Data File : VD061512.D
 Acq On : 2 Apr 2019 14:04
 Operator : VA/AP
 Sample : VD0402SBL01
 Misc : 5.00µ/5ml/MSVOA D/SOIL
 ALS Vial : 4 Sample Multiplier: 1

Instrument :
 MSVOA_D
 ClientSampleID :
 VD0402SBL01

Quant Time: Apr 03 01:50:02 2019
 Quant Method : Z:\VOASRV\HPCHEM1\MSVOA_D\METHOD\82D032719S.M
 Quant Title : SW846 8260
 QLast Update : Thu Mar 28 09:22:37 2019
 Response via : Initial Calibration

| Internal Standards | R.T. | QIon | Response | Conc | Units | Dev(Min) |
|----------------------------|-------|------|----------|-------|-------|----------|
| 1) Pentafluorobenzene | 7.04 | 168 | 750757 | 50.00 | µg/l | 0.02 |
| 34) 1,4-Difluorobenzene | 8.21 | 114 | 1225358 | 50.00 | µg/l | 0.02 |
| 63) Chlorobenzene-d5 | 12.36 | 117 | 932751 | 50.00 | µg/l | 0.00 |
| 72) 1,4-Dichlorobenzene-d4 | 14.51 | 152 | 431750 | 50.00 | µg/l | 0.00 |

System Monitoring Compounds

| | | | | | | |
|---------------------------|-------|-----|----------|--------|---------|------|
| 33) 1,2-Dichloroethane-d4 | 7.45 | 65 | 323136 | 50.39 | µg/l | 0.01 |
| Spiked Amount | | | | 50.000 | | |
| | | | Recovery | = | 100.78% | |
| 35) Dibromofluoromethane | 6.92 | 113 | 497679 | 53.15 | µg/l | 0.02 |
| Spiked Amount | | | | 50.000 | | |
| | | | Recovery | = | 106.30% | |
| 50) Toluene-d8 | 10.40 | 98 | 1154465 | 51.40 | µg/l | 0.01 |
| Spiked Amount | | | | 50.000 | | |
| | | | Recovery | = | 102.80% | |
| 62) 4-Bromofluorobenzene | 13.55 | 95 | 448578 | 52.08 | µg/l | 0.00 |
| Spiked Amount | | | | 50.000 | | |
| | | | Recovery | = | 104.16% | |

Target Compounds

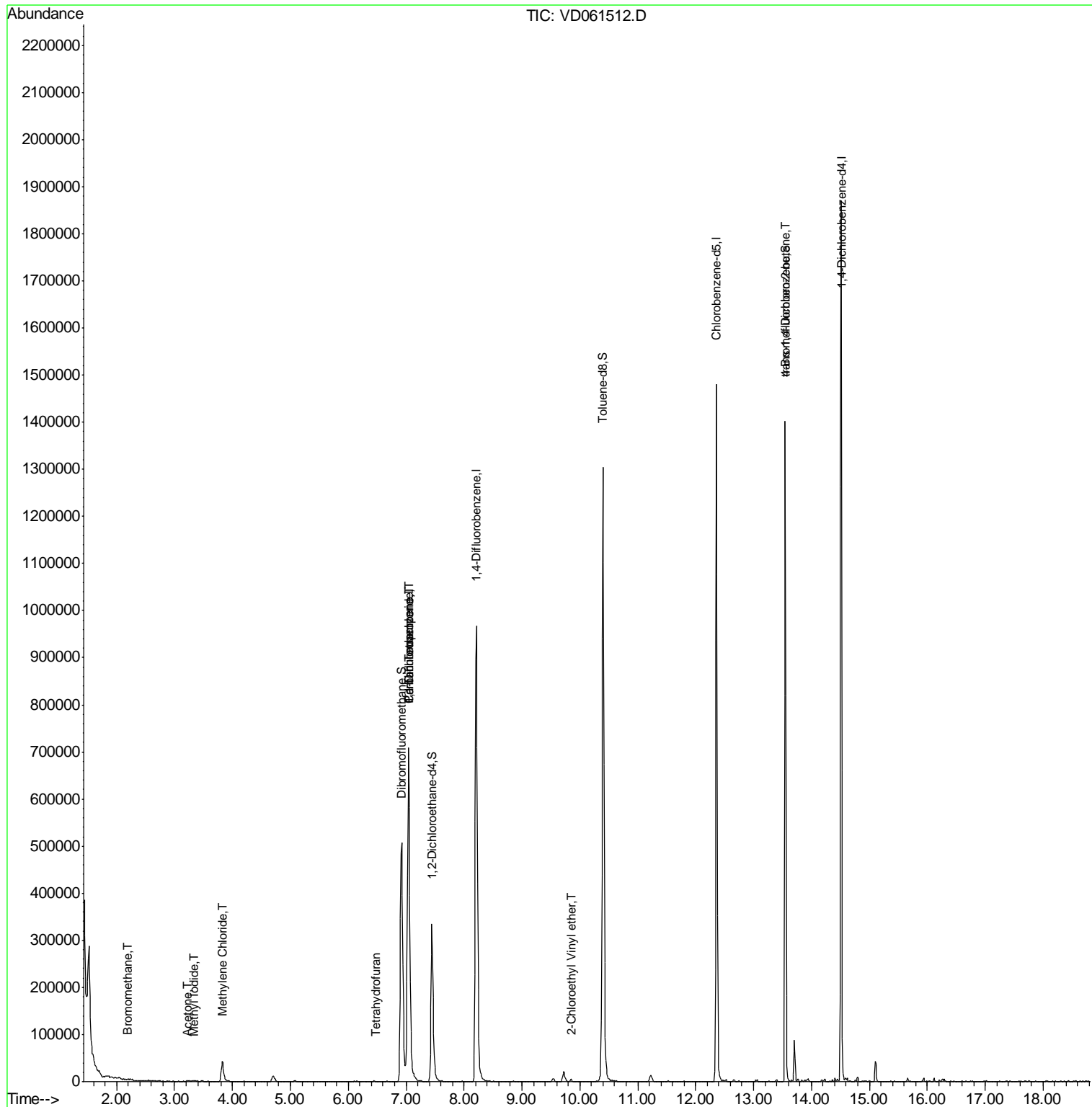
| | | | | | Qvalue | |
|--------------------------------|-------|-----|--------|--------|--------|----|
| 5) Bromomethane | 2.20 | 94 | 1671 | 1.404 | µg/l # | 10 |
| 10) Methyl Iodide | 3.33 | 142 | 3029 | 3.664 | µg/l # | 86 |
| 16) Acetone | 3.22 | 43 | 2936 | 1.781 | µg/l # | 48 |
| 20) Methylene Chloride | 3.82 | 84 | 35409 | 1.990 | µg/l | 95 |
| 29) Tetrahydrofuran | 6.47 | 42 | 1062 | 1.057 | µg/l # | 30 |
| 36) 1,1-Dichloropropene | 7.04 | 75 | 55672 | 5.206 | µg/l # | 45 |
| 38) Carbon Tetrachloride | 7.04 | 117 | 71896 | 5.850 | µg/l # | 14 |
| 58) 2-Chloroethyl Vinyl ether | 9.84 | 63 | 3243 | 1.082 | µg/l # | 82 |
| 81) trans-1,4-Dichloro-2-buten | 13.55 | 75 | 164988 | 86.763 | µg/l # | 18 |

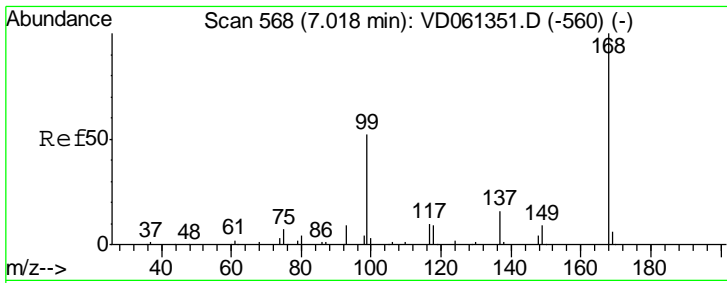
(#) = qualifier out of range (m) = manual integration (+) = signals summed

Data Path : Z:\VOASRV\HPCHEM1\MSVOA D\DATA\VD040219\
 Data File : VD061512.D
 Acq On : 2 Apr 2019 14:04
 Operator : VA/AP
 Sample : VD0402SBL01
 Misc : 5.00µ/5ml/MSVOA D/SOIL
 ALS Vial : 4 Sample Multiplier: 1

Instrument :
 MSVOA_D
 ClientSampleId :
 VD0402SBL01

Quant Time: Apr 03 01:50:02 2019
 Quant Method : Z:\VOASRV\HPCHEM1\MSVOA_D\METHOD\82D032719S.M
 Quant Title : SW846 8260
 QLast Update : Thu Mar 28 09:22:37 2019
 Response via : Initial Calibration

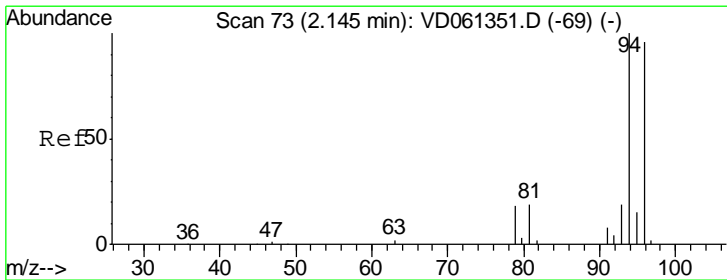
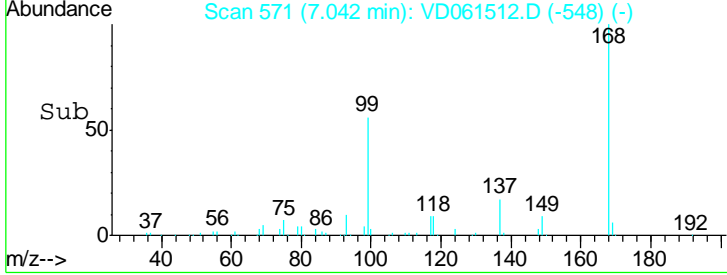
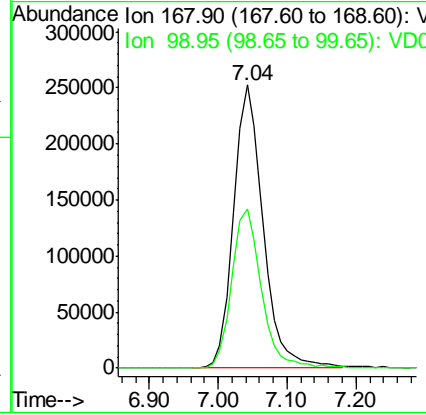
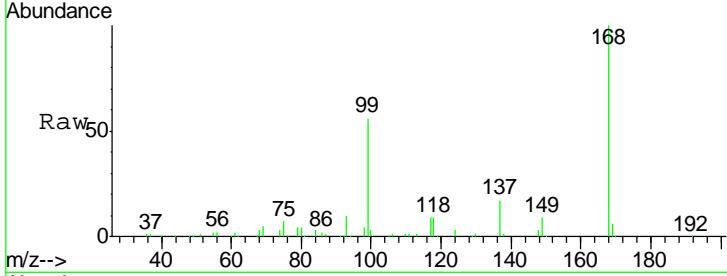




#1
 Pentafluorobenzene
 Concen: 50.000 ug/l
 RT: 7.04 min Scan# 571
 Delta R.T. 0.02 min
 Lab File: VD061512.D
 Acq: 2 Apr 2019 14:04

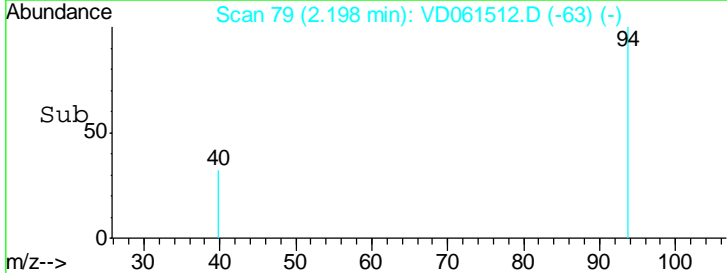
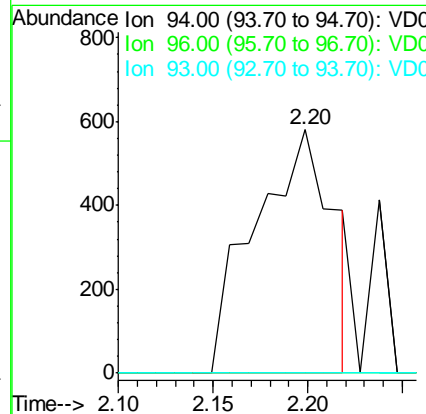
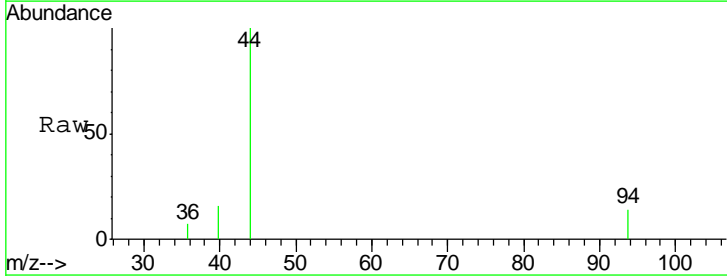
Instrument : MSVOA_D
 ClientSampleId : VD0402SBL01

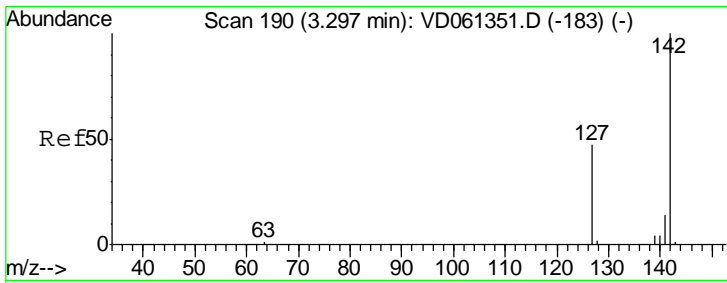
| Tgt Ion | Resp | Lower | Upper |
|---------|------|-------|-------|
| 168 | 100 | | |
| 99 | 56.4 | 43.1 | 64.7 |



#5
 Bromomethane
 Concen: 1.404 ug/l
 RT: 2.20 min Scan# 79
 Delta R.T. 0.05 min
 Lab File: VD061512.D
 Acq: 2 Apr 2019 14:04

| Tgt Ion | Resp | Lower | Upper |
|---------|------|-------|--------|
| 94 | 100 | | |
| 96 | 0.0 | 78.3 | 117.5# |
| 93 | 0.0 | 15.6 | 23.4# |



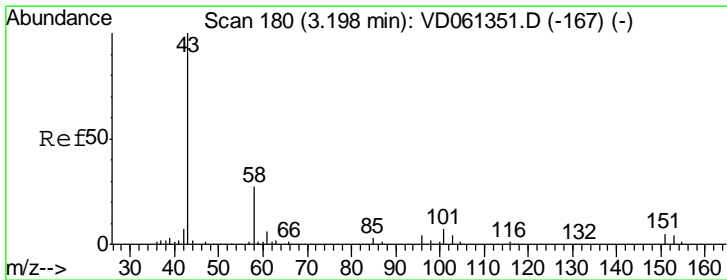
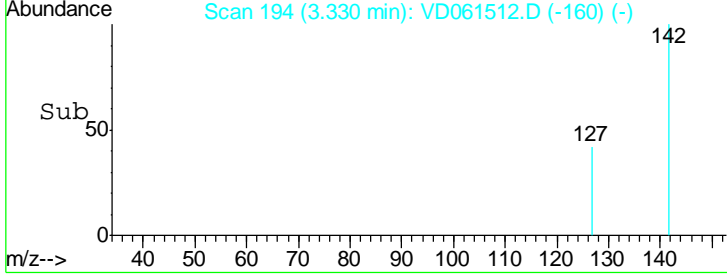
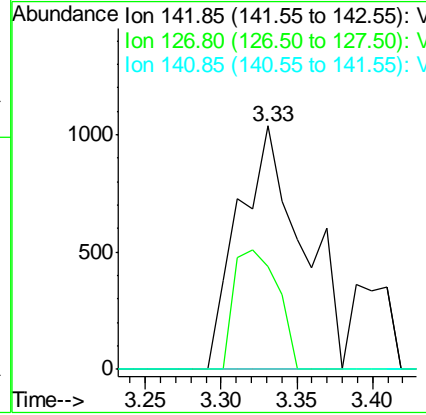
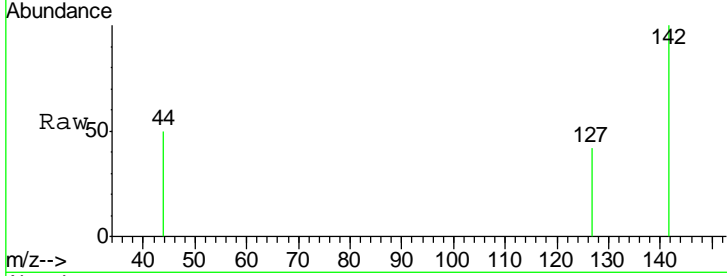


#10
Methyl Iodide
Concen: 3.664 ug/l
RT: 3.33 min Scan# 194
Delta R.T. 0.03 min
Lab File: VD061512.D
Acq: 2 Apr 2019 14:04

Instrument :
MSVOA_D
ClientSampled :
VD0402SBL01

Tgt Ion: 142 Resp: 3029

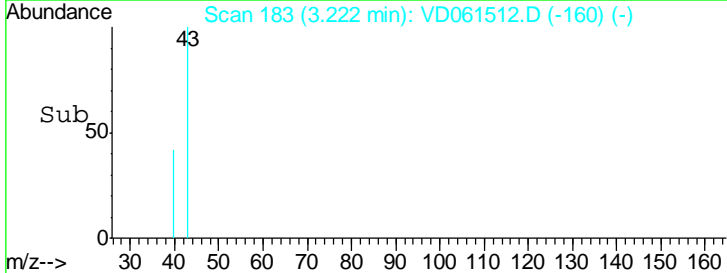
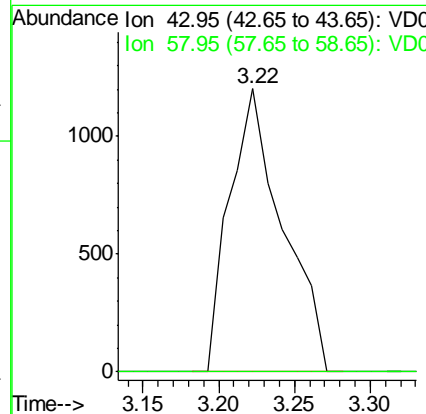
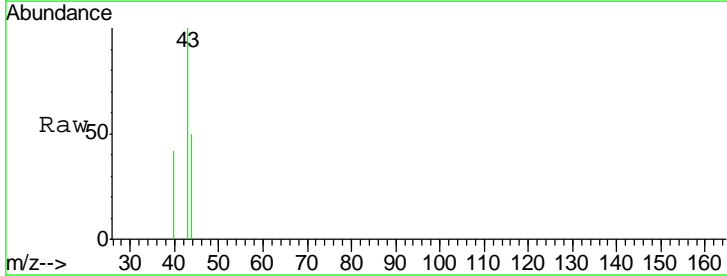
| Ion | Ratio | Lower | Upper |
|-----|-------|-------|-------|
| 142 | 100 | | |
| 127 | 42.3 | 37.7 | 56.5 |
| 141 | 0.0 | 11.5 | 17.3# |

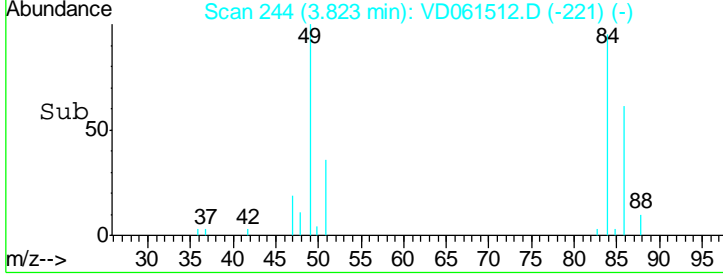
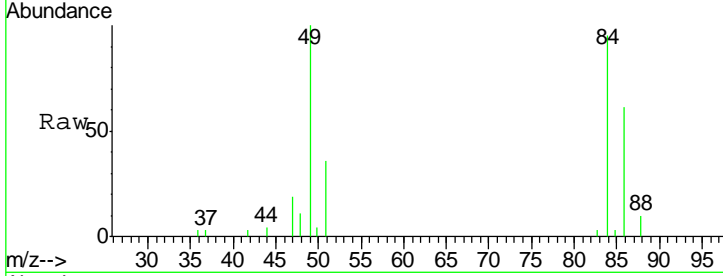
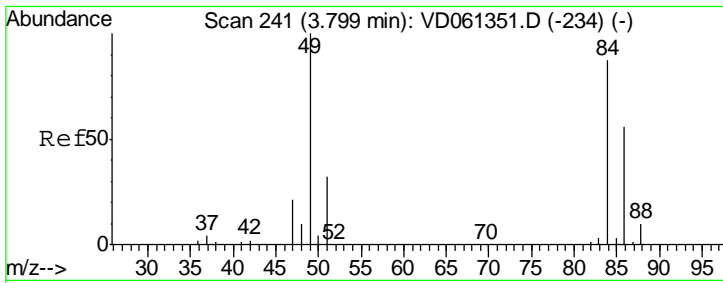


#16
Acetone
Concen: 1.781 ug/l
RT: 3.22 min Scan# 183
Delta R.T. 0.02 min
Lab File: VD061512.D
Acq: 2 Apr 2019 14:04

Tgt Ion: 43 Resp: 2936

| Ion | Ratio | Lower | Upper |
|-----|-------|-------|-------|
| 43 | 100 | | |
| 58 | 0.0 | 21.5 | 32.3# |

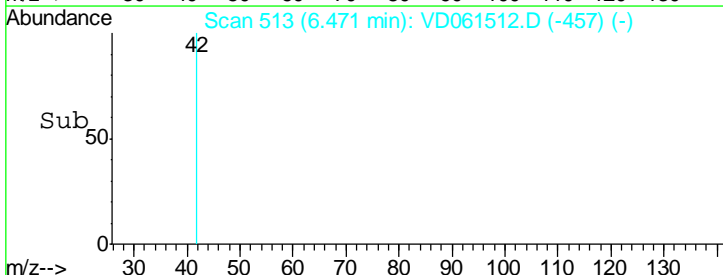
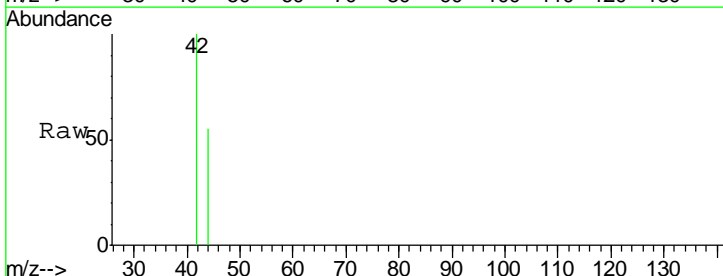
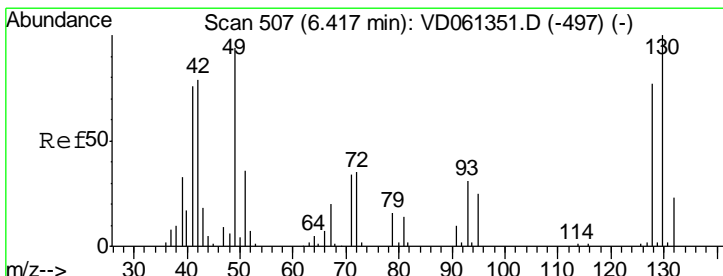
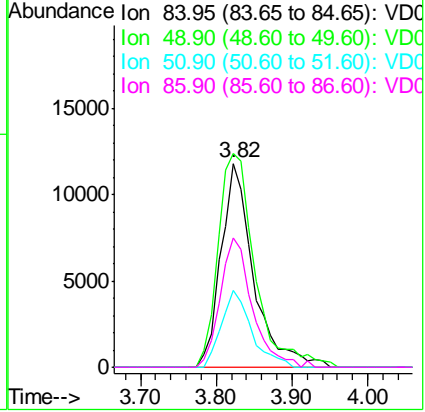




#20
 Methylene Chloride
 Concen: 1.990 ug/l
 RT: 3.82 min Scan# 244
 Delta R.T. 0.02 min
 Lab File: VD061512.D
 Acq: 2 Apr 2019 14:04

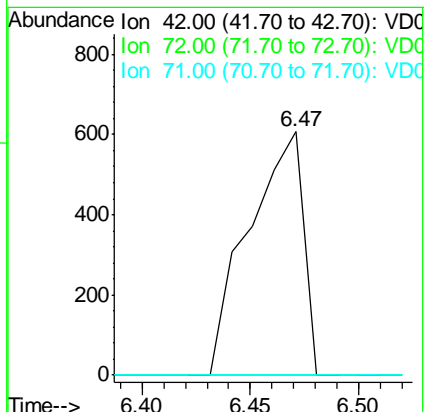
Instrument : MSVOA_D
 ClientSampled : VD0402SBL01

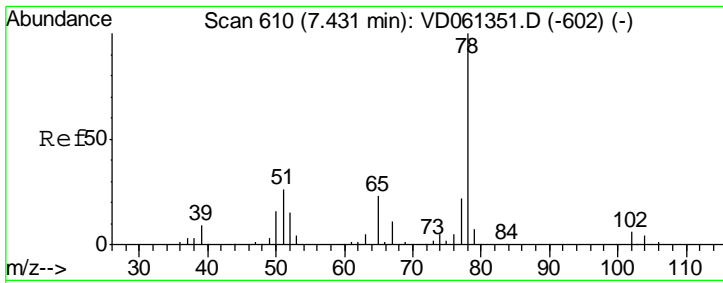
| Tgt Ion | Resp | Lower | Upper |
|---------|-------|-------|-------|
| 84 | 100 | | |
| 49 | 104.9 | 91.8 | 137.8 |
| 51 | 37.8 | 29.8 | 44.8 |
| 86 | 63.6 | 51.8 | 77.6 |



#29
 Tetrahydrofuran
 Concen: 1.057 ug/l
 RT: 6.47 min Scan# 513
 Delta R.T. 0.05 min
 Lab File: VD061512.D
 Acq: 2 Apr 2019 14:04

| Tgt Ion | Resp | Lower | Upper |
|---------|------|-------|-------|
| 42 | 100 | | |
| 72 | 0.0 | 37.4 | 56.0# |
| 71 | 0.0 | 36.7 | 55.1# |

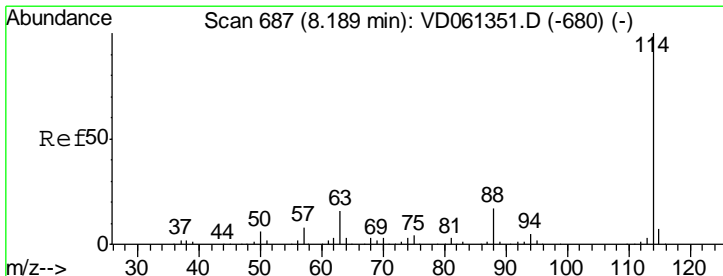
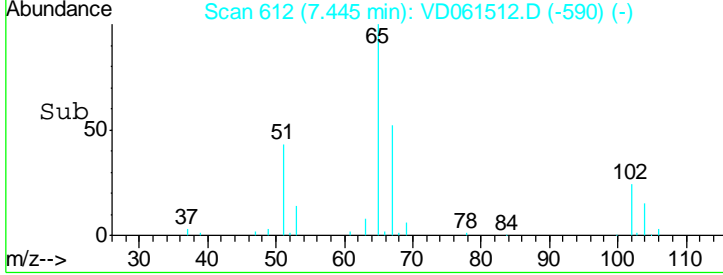
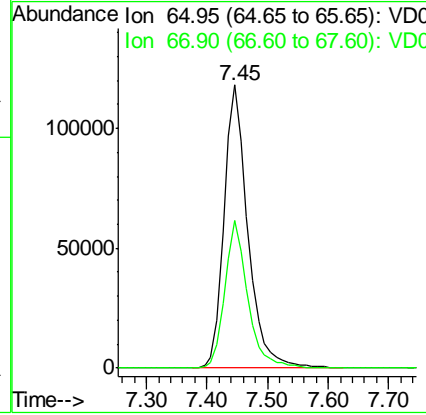
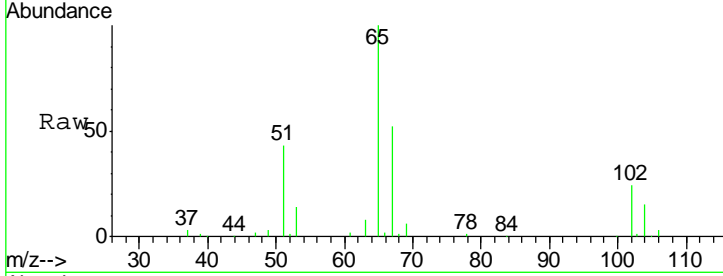




#33
 1,2-Dichloroethane-d4
 Concen: N.D. ug/l
 RT: 7.45 min Scan# 612
 Delta R.T. 0.01 min
 Lab File: VD061512.D
 Acq: 2 Apr 2019 14:04

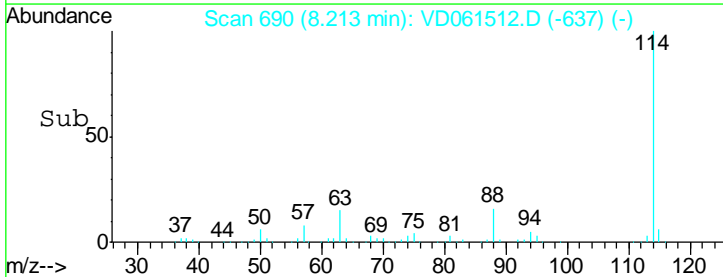
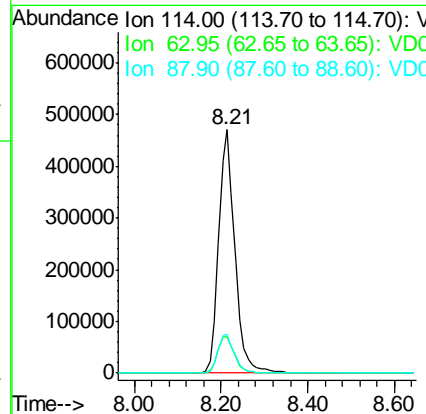
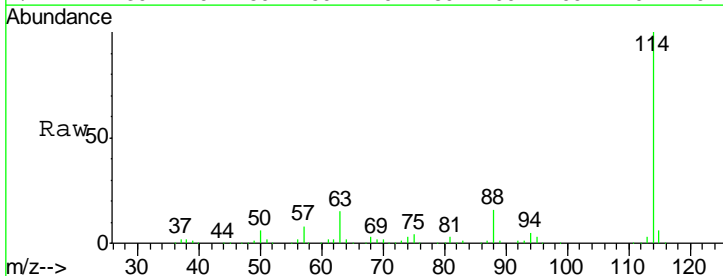
Instrument :
 MSVOA_D
ClientSampled :
 VD0402SBL01

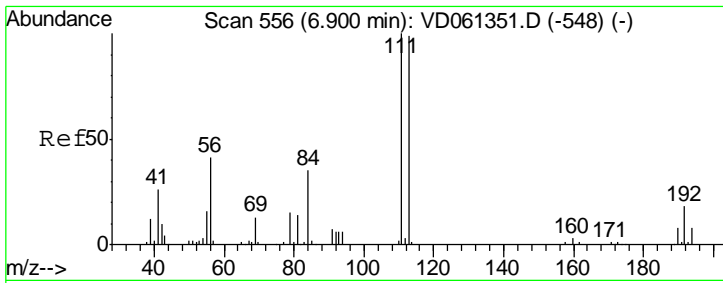
| Tgt Ion | Resp | Lower | Upper |
|---------|------|-------|-------|
| 65 | 100 | | |
| 67 | 52.3 | 0.0 | 99.8 |



#34
 1,4-Difluorobenzene
 Concen: 50.000 ug/l
 RT: 8.21 min Scan# 690
 Delta R.T. 0.02 min
 Lab File: VD061512.D
 Acq: 2 Apr 2019 14:04

| Tgt Ion | Resp | Lower | Upper |
|---------|------|-------|-------|
| 114 | 100 | | |
| 63 | 15.1 | 0.0 | 31.6 |
| 88 | 16.1 | 0.0 | 33.4 |

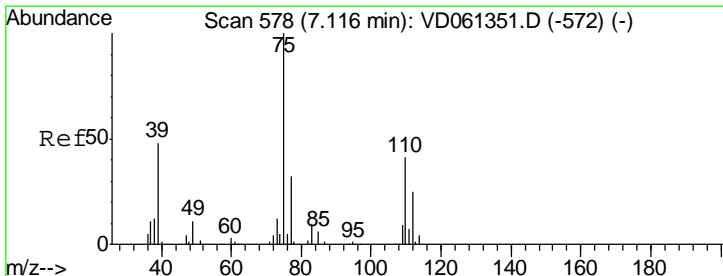
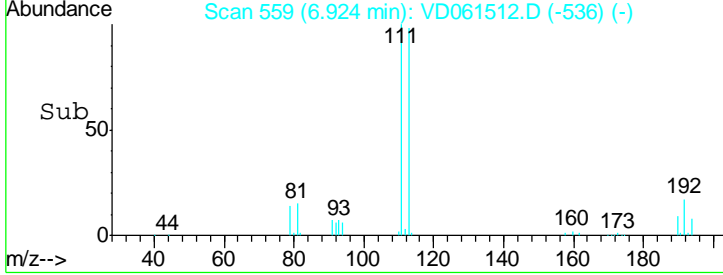
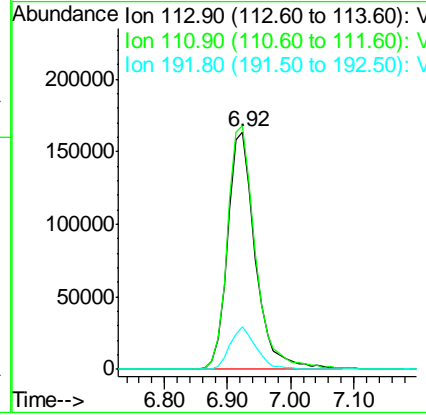
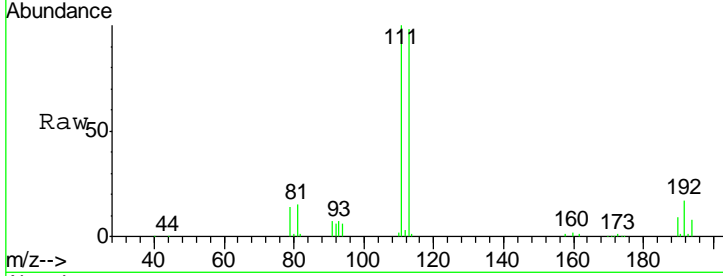




#35
 Dibromofluoromethane
 Concen: 50.000 ug/l
 RT: 6.92 min Scan# 559
 Delta R.T. 0.02 min
 Lab File: VD061512.D
 Acq: 2 Apr 2019 14:04

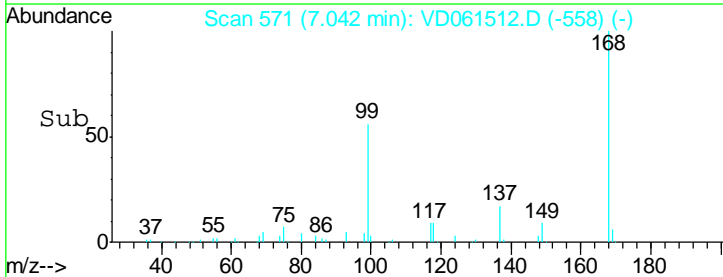
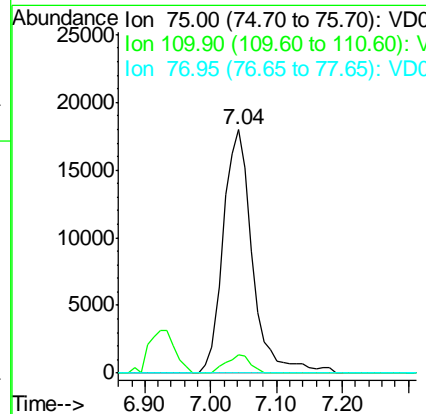
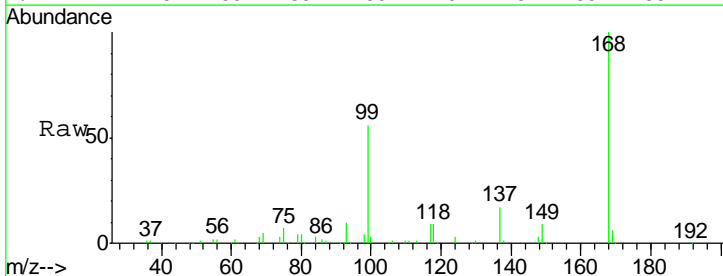
Instrument :
 MSVOA_D
ClientSampled :
 VD0402SBL01

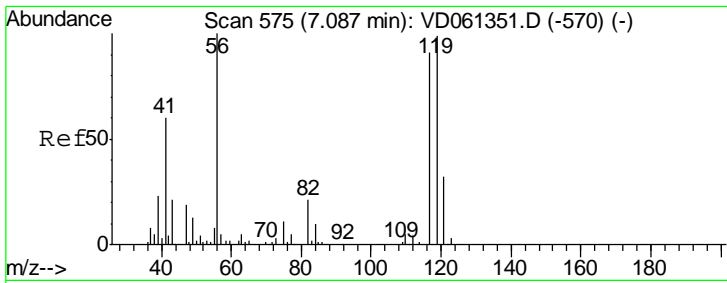
| Tgt Ion | Resp | Lower | Upper |
|---------|--------|-------|-------|
| 113 | 497679 | | |
| 111 | 102.5 | 81.0 | 121.6 |
| 192 | 17.9 | 14.4 | 21.6 |



#36
 1,1-Dichloropropene
 Concen: 5.206 ug/l
 RT: 7.04 min Scan# 571
 Delta R.T. -0.07 min
 Lab File: VD061512.D
 Acq: 2 Apr 2019 14:04

| Tgt Ion | Resp | Lower | Upper |
|---------|-------|-------|-------|
| 75 | 55672 | | |
| 110 | 7.4 | 20.4 | 61.3# |
| 77 | 0.0 | 24.9 | 37.3# |

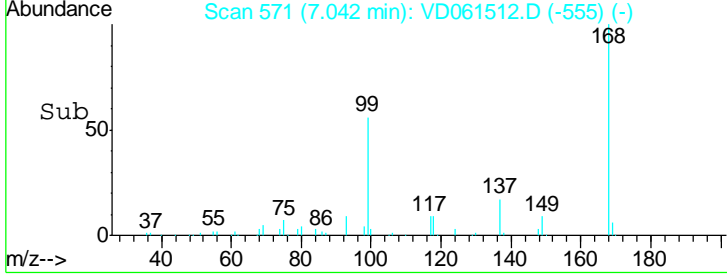
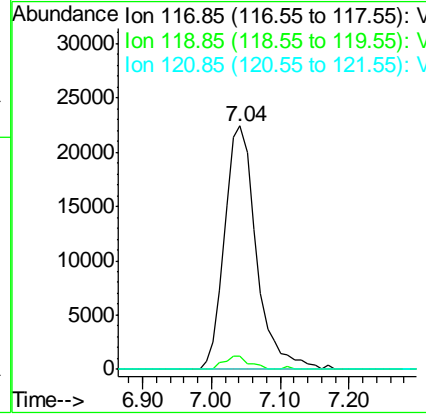
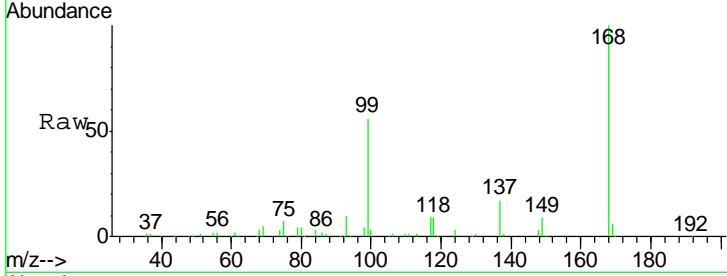




#38
 Carbon Tetrachloride
 Concen: 5.850 ug/l
 RT: 7.04 min Scan# 571
 Delta R.T. -0.05 min
 Lab File: VD061512.D
 Acq: 2 Apr 2019 14:04

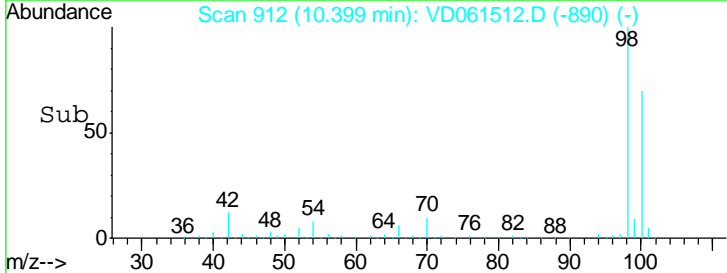
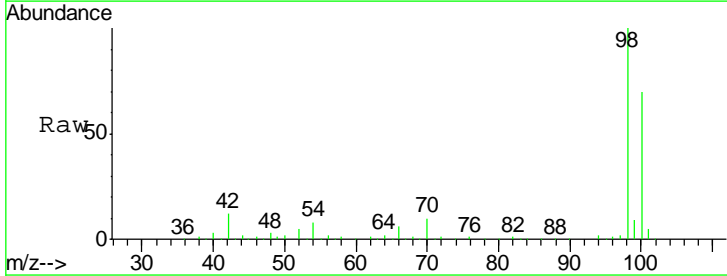
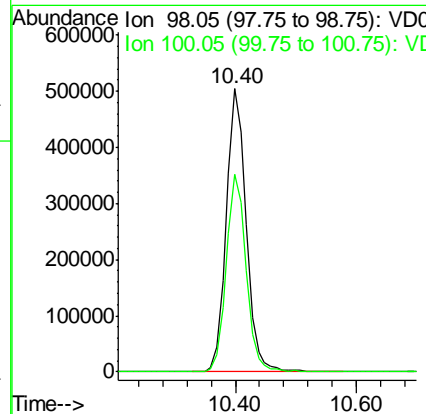
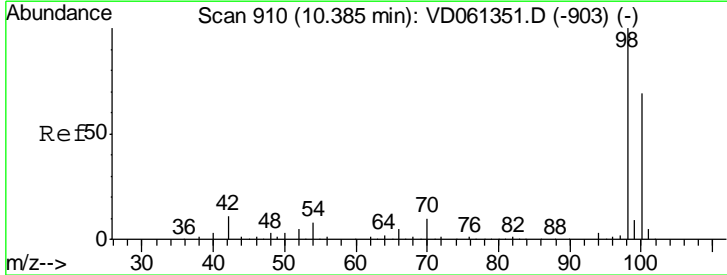
Instrument :
 MSVOA_D
ClientSampled :
 VD0402SBL01

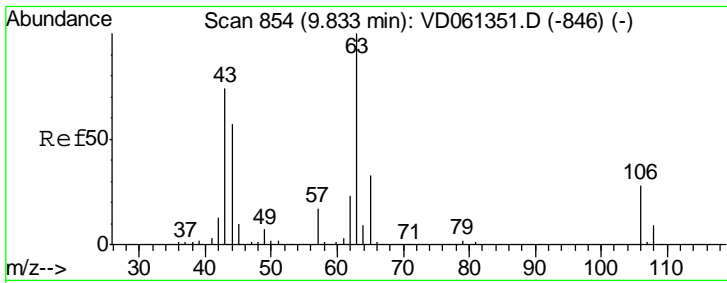
| Tgt Ion | Resp | Lower | Upper |
|---------|------|-------|--------|
| 117 | 100 | | |
| 119 | 5.3 | 80.1 | 120.1# |
| 121 | 0.0 | 25.6 | 38.4# |



#50
 Toluene-d8
 Concen: N.D. ug/l
 RT: 10.40 min Scan# 912
 Delta R.T. 0.01 min
 Lab File: VD061512.D
 Acq: 2 Apr 2019 14:04

| Tgt Ion | Resp | Lower | Upper |
|---------|------|-------|-------|
| 98 | 100 | | |
| 100 | 69.6 | 56.2 | 84.2 |

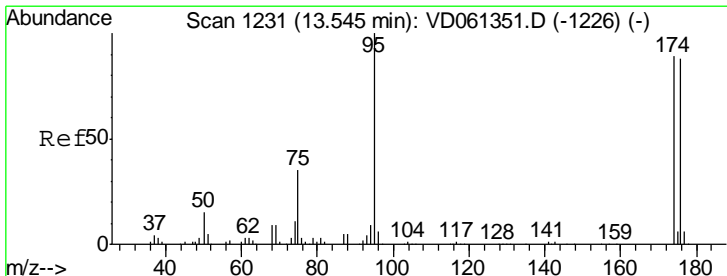
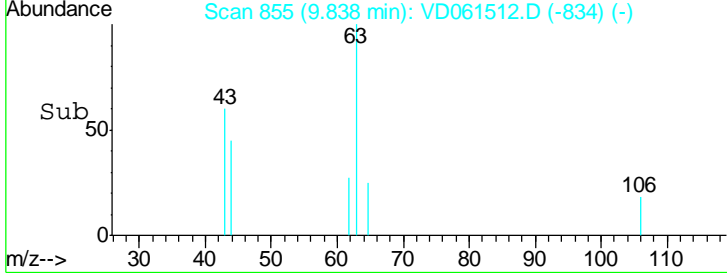
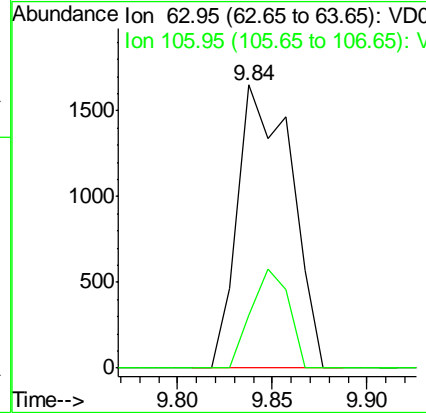
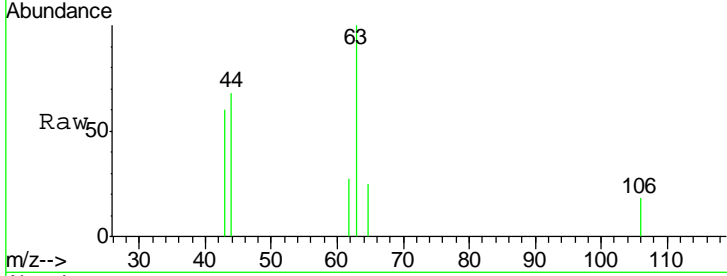




#58
 2-Chloroethyl Vinyl ether
 Concen: 1.082 ug/l
 RT: 9.84 min Scan# 855
 Delta R.T. 0.00 min
 Lab File: VD061512.D
 Acq: 2 Apr 2019 14:04

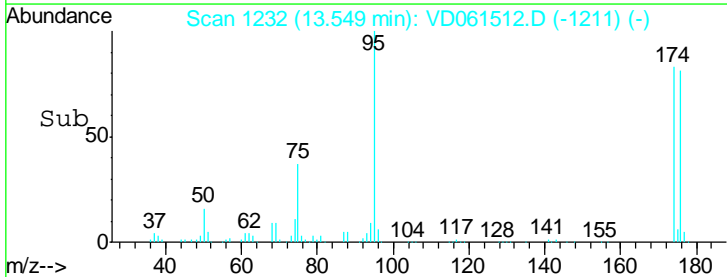
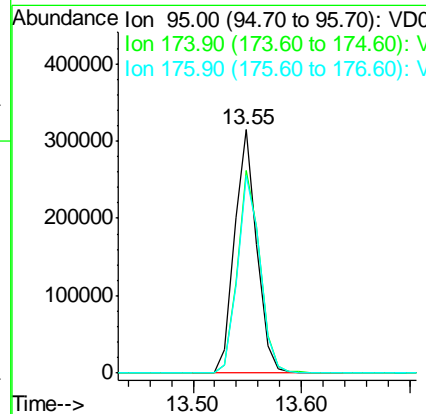
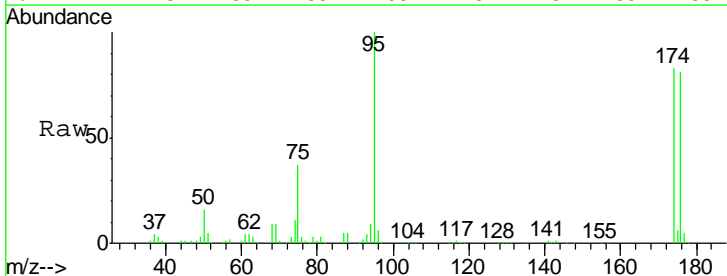
Instrument : MSVOA_D
 ClientSampled : VD0402SBL01

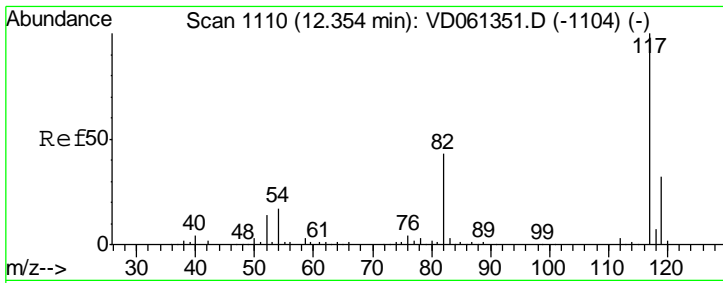
Tgt Ion: 63 Resp: 3243
 Ion Ratio Lower Upper
 63 100
 106 18.5 22.4 33.6#



#62
 4-Bromofluorobenzene
 Concen: Below ug/l
 RT: 13.55 min Scan# 1232
 Delta R.T. 0.00 min
 Lab File: VD061512.D
 Acq: 2 Apr 2019 14:04

Tgt Ion: 95 Resp: 448578
 Ion Ratio Lower Upper
 95 100
 174 83.1 0.0 178.0
 176 81.0 0.0 175.0

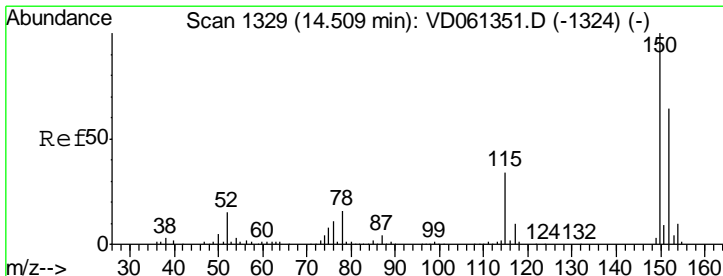
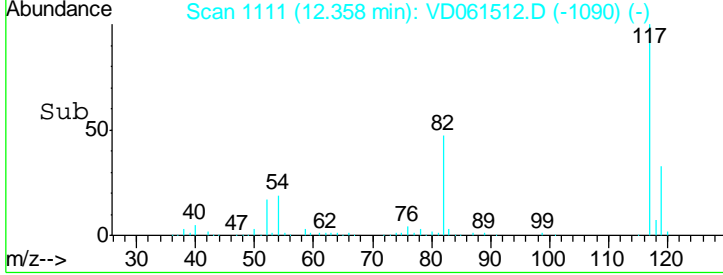
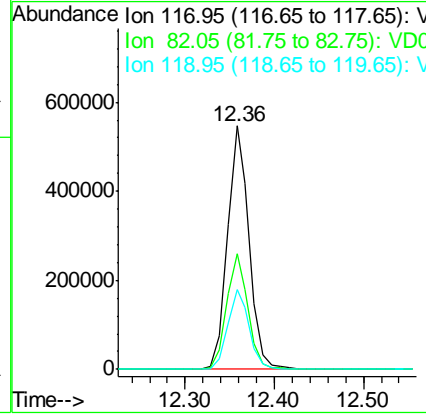
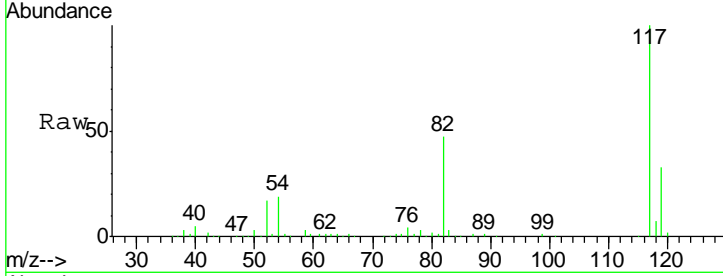




#63
 Chlorobenzene-d5
 Concen: 50.000 ug/l
 RT: 12.36 min Scan# 1111
 Delta R.T. 0.00 min
 Lab File: VD061512.D
 Acq: 2 Apr 2019 14:04

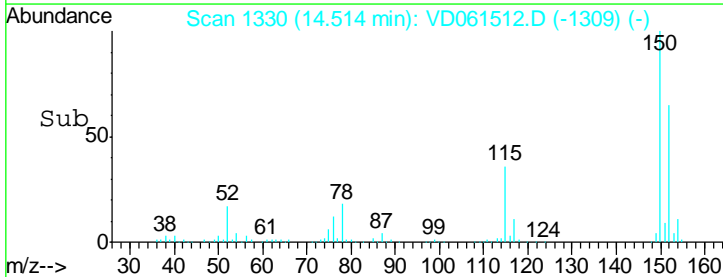
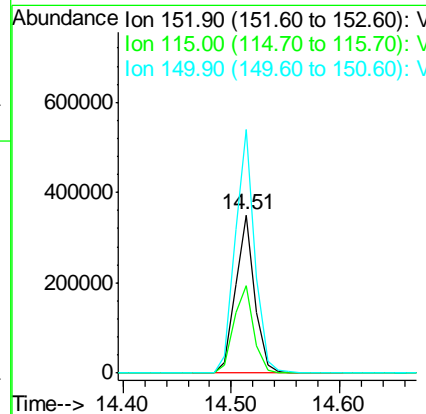
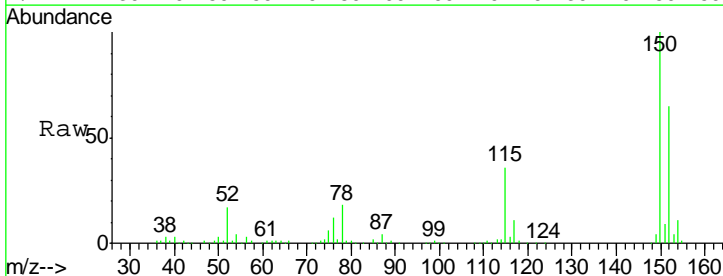
Instrument :
 MSVOA_D
 ClientSampled :
 VD0402SBL01

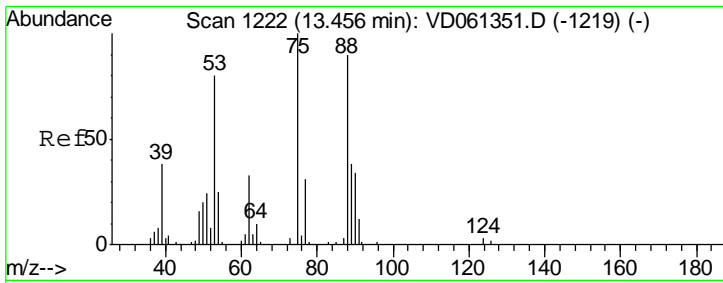
| Tgt Ion | Resp | Lower | Upper |
|---------|--------|-------|-------|
| 117 | 932751 | | |
| 82 | 47.3 | 34.4 | 51.6 |
| 119 | 32.6 | 25.8 | 38.6 |



#72
 1,4-Dichlorobenzene-d4
 Concen: 50.000 ug/l
 RT: 14.51 min Scan# 1330
 Delta R.T. 0.00 min
 Lab File: VD061512.D
 Acq: 2 Apr 2019 14:04

| Tgt Ion | Resp | Lower | Upper |
|---------|--------|-------|-------|
| 152 | 431750 | | |
| 115 | 55.1 | 26.9 | 80.6 |
| 150 | 153.6 | 0.0 | 318.0 |

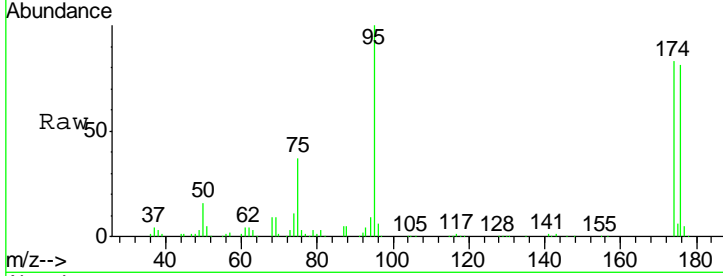




#81
 trans-1,4-Dichloro-2-butene
 Concen: 86.763 ug/l
 RT: 13.55 min Scan# 1232
 Delta R.T. 0.09 min
 Lab File: VD061512.D
 Acq: 2 Apr 2019 14:04

Instrument :
 MSVOA_D
 ClientSampleId :
 VD0402SBL01

| Tot Ion | Ion | Resp | Lower | Upper |
|---------|-----|--------|-------|-------|
| 75 | 100 | 164988 | | |
| 53 | 0.0 | | 63.8 | 95.8# |
| 89 | 0.0 | | 30.5 | 45.7# |



Abundance Ion 75.00 (74.70 to 75.70): VDC
 Ion 53.00 (52.70 to 53.70): VDC
 Ion 89.00 (88.70 to 89.70): VDC

