

Data Path : Z:\VOASRV\HPCHEM1\MSVOA D\DATA\VD040419\
 Data File : VD061583.D
 Acq On : 4 Apr 2019 17:12
 Operator : VA/AP
 Sample : K2203-03
 Misc : 5.00µ/5ml/MSVOA D/SOIL
 ALS Vial : 10 Sample Multiplier: 1

Instrument :
 MSVOA_D
ClientSampleId :
 SU-03-040219-B

Quant Time: Apr 05 01:37:26 2019
 Quant Method : Z:\VOASRV\HPCHEM1\MSVOA_D\METHOD\82D032719S.M
 Quant Title : SW846 8260
 QLast Update : Thu Mar 28 09:22:37 2019
 Response via : Initial Calibration

Internal Standards	R.T.	QIon	Response	Conc	Units	Dev(Min)
1) Pentafluorobenzene	7.02	168	478217	50.00	µg/l	0.00
34) 1,4-Difluorobenzene	8.20	114	769726	50.00	µg/l	0.01
63) Chlorobenzene-d5	12.35	117	581691	50.00	µg/l	0.00
72) 1,4-Dichlorobenzene-d4	14.51	152	212233	50.00	µg/l	0.00

System Monitoring Compounds

33) 1,2-Dichloroethane-d4	7.43	65	179882	44.03	µg/l	0.00
Spiked Amount	50.000		Recovery	= 88.06%		
35) Dibromofluoromethane	6.90	113	298277	50.71	µg/l	0.00
Spiked Amount	50.000		Recovery	= 101.42%		
50) Toluene-d8	10.40	98	559676	39.67	µg/l	0.01
Spiked Amount	50.000		Recovery	= 79.34%		
62) 4-Bromofluorobenzene	13.55	95	204306	37.76	µg/l	0.00
Spiked Amount	50.000		Recovery	= 75.52%		

Target Compounds

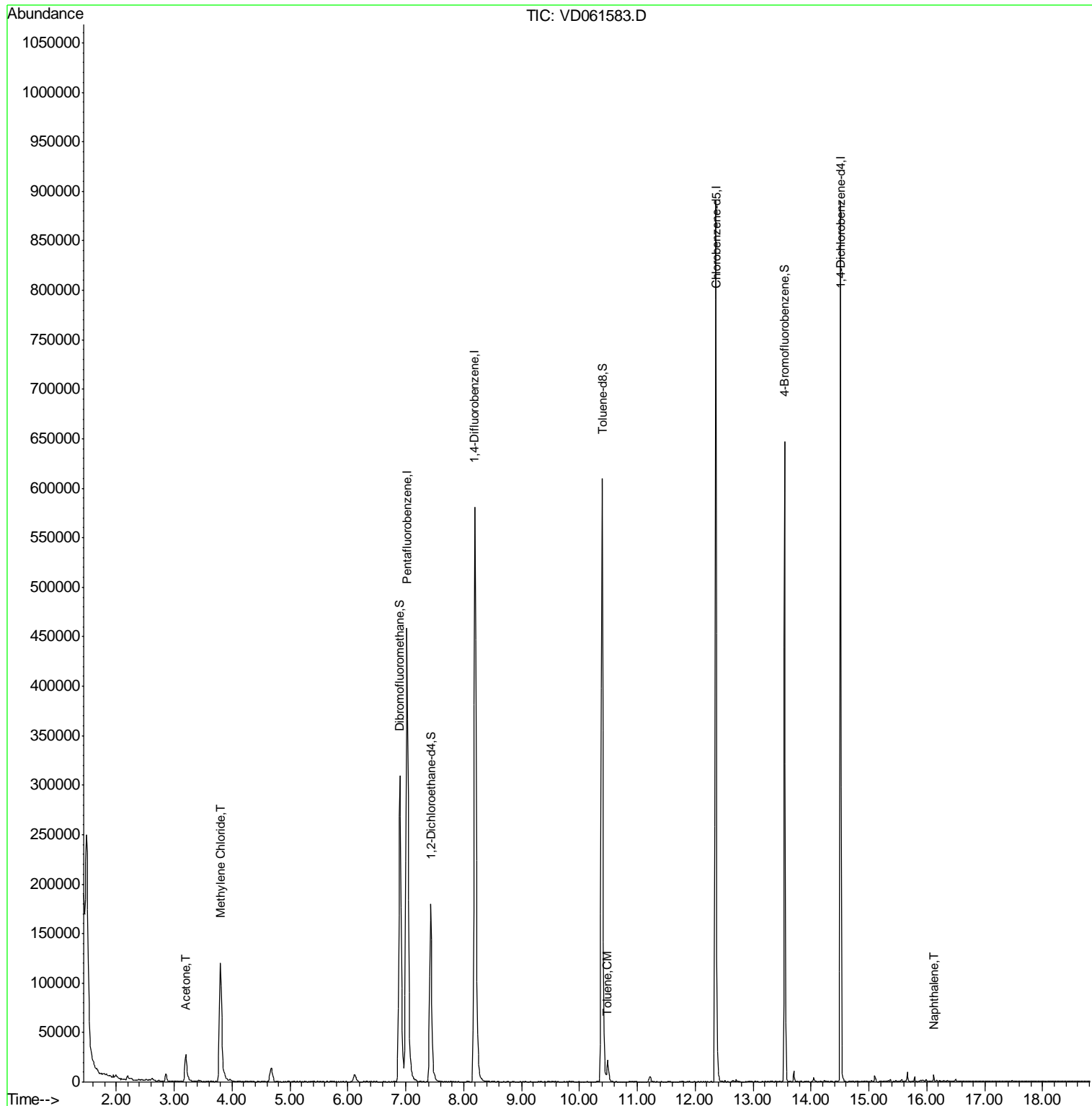
					Qvalue
16) Acetone	3.20	43	55479	52.830	µg/l 93
20) Methylene Chloride	3.80	84	94689	14.742	µg/l 96
52) Toluene	10.48	92	11701	1.138	µg/l 100
95) Naphthalene	16.11	128	5190	1.229	µg/l # 94

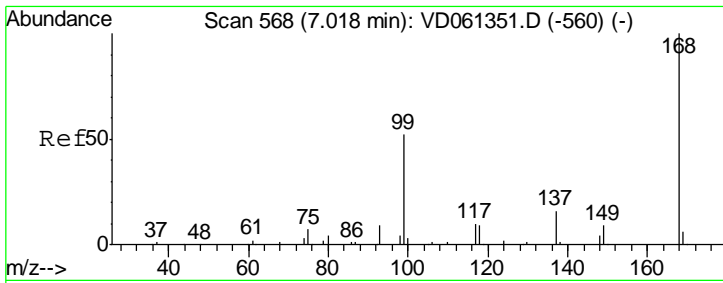
(#) = qualifier out of range (m) = manual integration (+) = signals summed

Data Path : Z:\VOASRV\HPCHEM1\MSVOA D\DATA\VD040419\
 Data File : VD061583.D
 Acq On : 4 Apr 2019 17:12
 Operator : VA/AP
 Sample : K2203-03
 Misc : 5.00µ/5ml/MSVOA D/SOIL
 ALS Vial : 10 Sample Multiplier: 1

Instrument :
 MSVOA_D
 ClientSampleId :
 SU-03-040219-B

Quant Time: Apr 05 01:37:26 2019
 Quant Method : Z:\VOASRV\HPCHEM1\MSVOA_D\METHOD\82D032719S.M
 Quant Title : SW846 8260
 QLast Update : Thu Mar 28 09:22:37 2019
 Response via : Initial Calibration

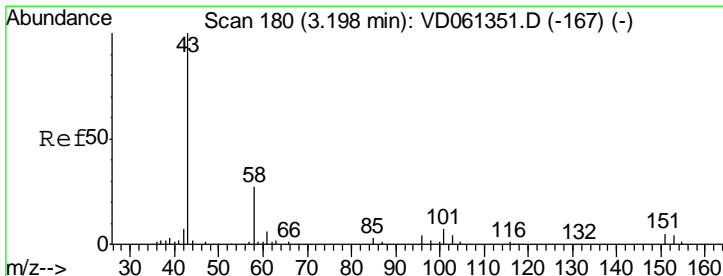
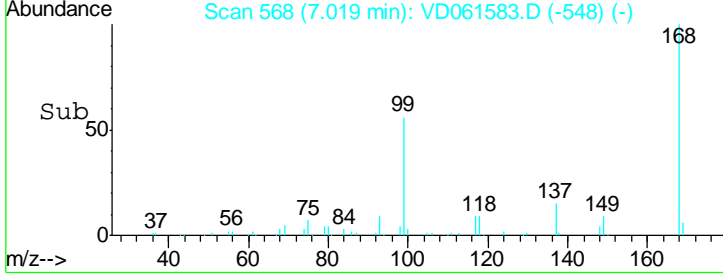
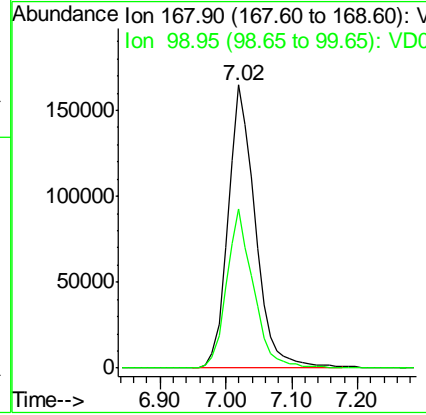
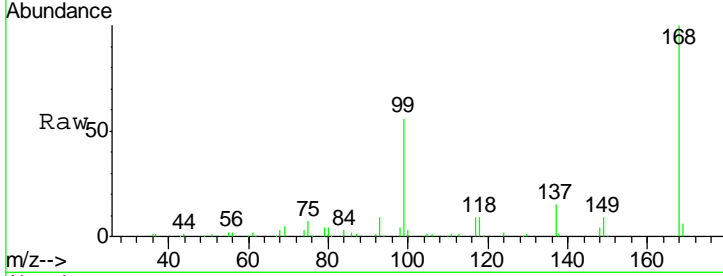




#1
 Pentafluorobenzene
 Concen: 50.000 ug/l
 RT: 7.02 min Scan# 568
 Delta R.T. 0.00 min
 Lab File: VD061583.D
 Acq: 4 Apr 2019 17:12

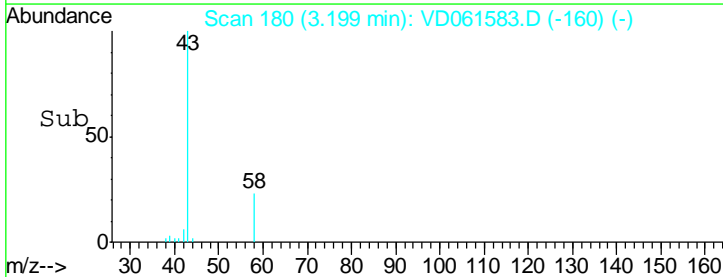
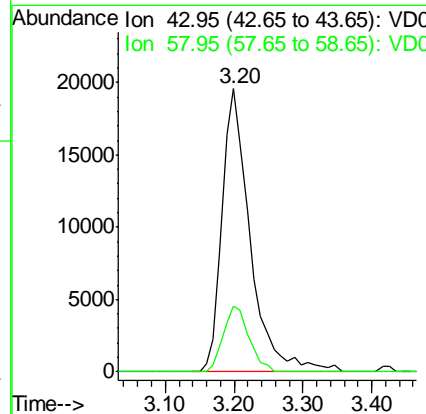
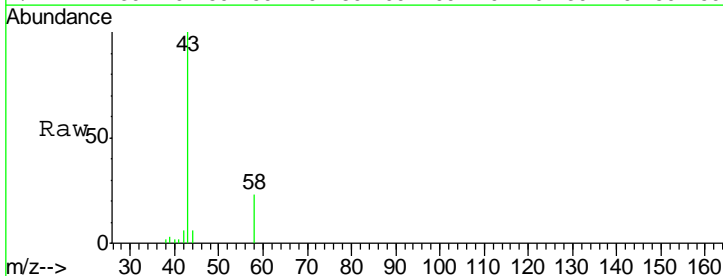
Instrument :
 MSVOA_D
 ClientSampled :
 SU-03-040219-B

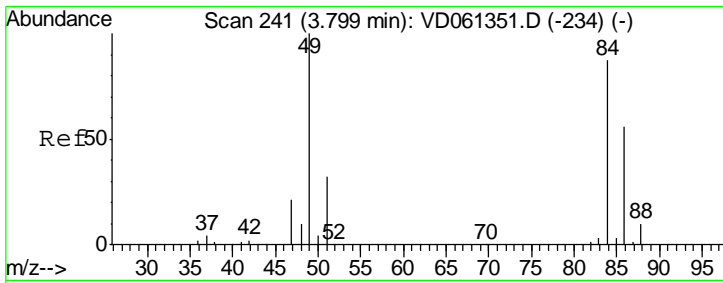
Tot Ion: 168 Resp: 478217
 Ion Ratio Lower Upper
 168 100
 99 56.3 43.1 64.7



#16
 Acetone
 Concen: 52.830 ug/l
 RT: 3.20 min Scan# 180
 Delta R.T. 0.00 min
 Lab File: VD061583.D
 Acq: 4 Apr 2019 17:12

Tgt Ion: 43 Resp: 55479
 Ion Ratio Lower Upper
 43 100
 58 23.2 21.5 32.3

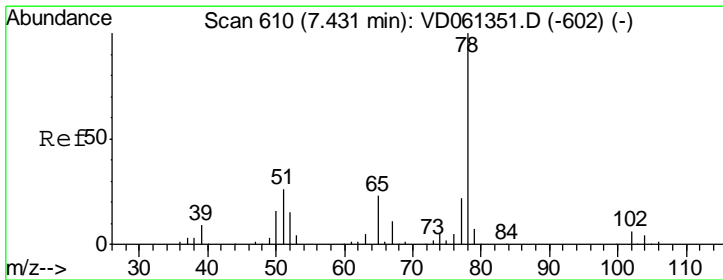
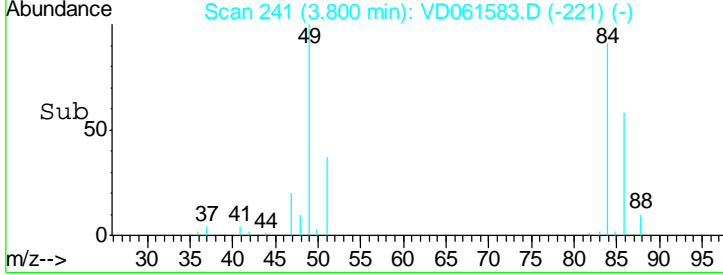
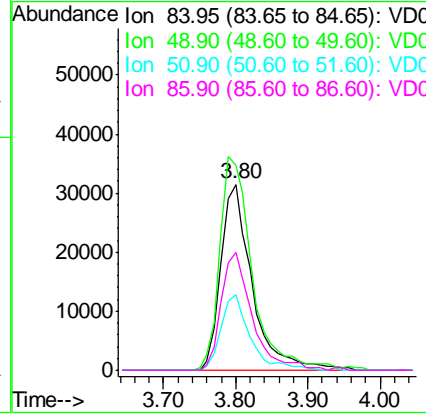
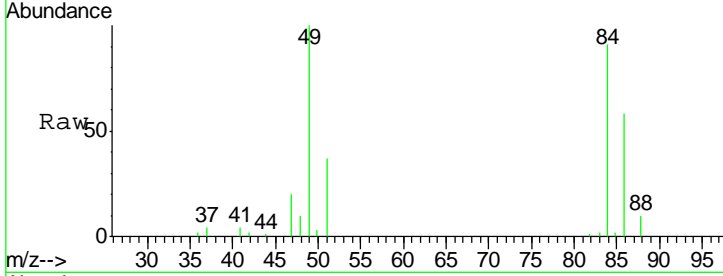




#20
Methylene Chloride
Concen: 14.742 ug/l
RT: 3.80 min Scan# 241
Delta R.T. 0.00 min
Lab File: VD061583.D
Acq: 4 Apr 2019 17:12

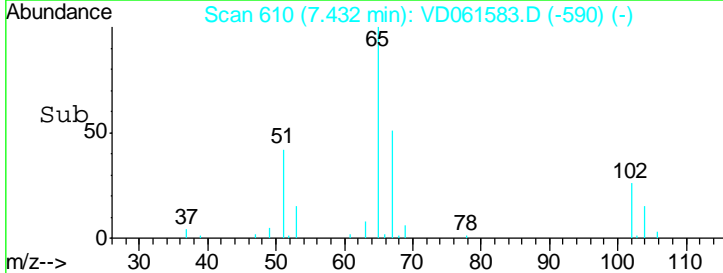
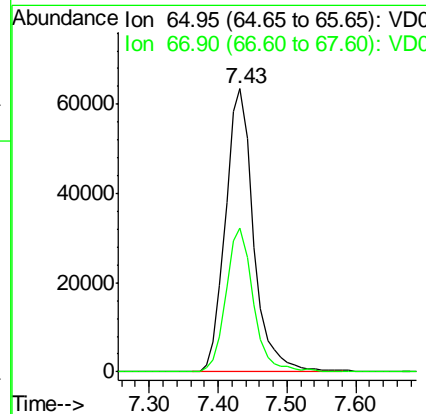
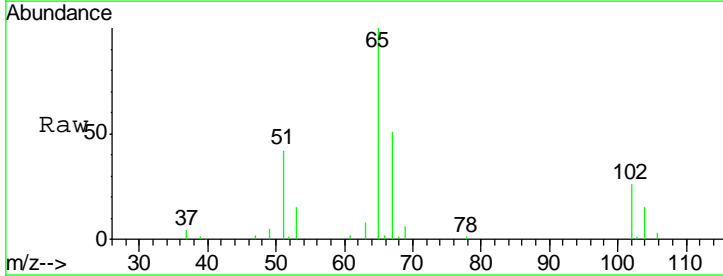
Instrument :
MSVOA_D
ClientSampleId :
SU-03-040219-B

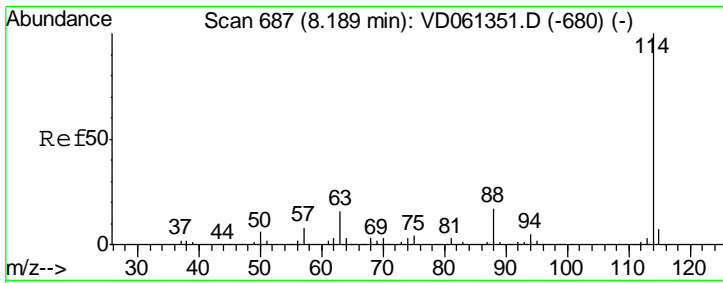
Tgt Ion	Resp	Lower	Upper
84	100		
49	110.1	91.8	137.8
51	41.0	29.8	44.8
86	63.4	51.8	77.6



#33
1,2-Dichloroethane-d4
Concen: N.D. ug/l
RT: 7.43 min Scan# 610
Delta R.T. 0.00 min
Lab File: VD061583.D
Acq: 4 Apr 2019 17:12

Tgt Ion	Resp	Lower	Upper
65	100		
67	50.8	0.0	99.8

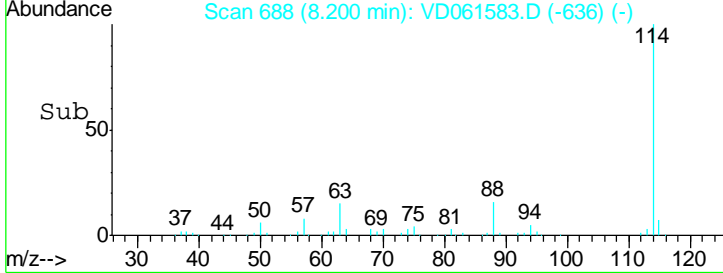
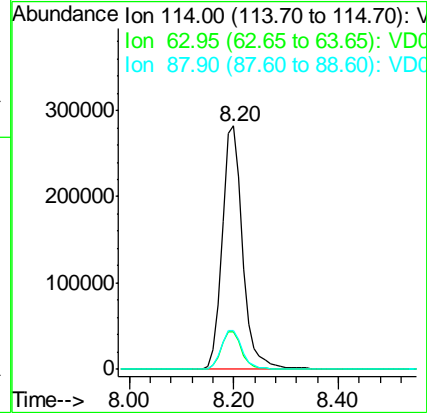
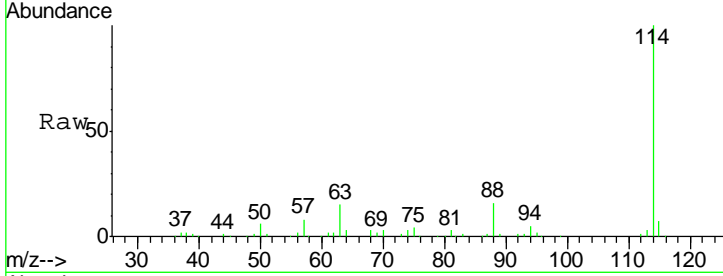




#34
 1,4-Difluorobenzene
 Concen: 50.000 ug/l
 RT: 8.20 min Scan# 688
 Delta R.T. 0.01 min
 Lab File: VD061583.D
 Acq: 4 Apr 2019 17:12

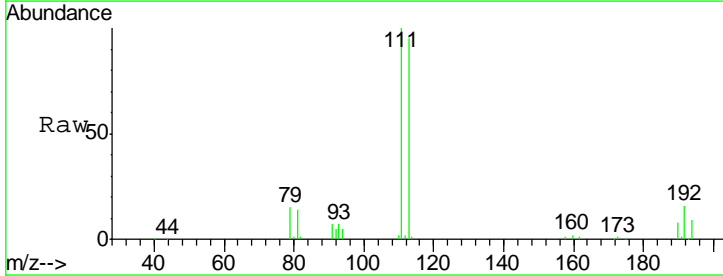
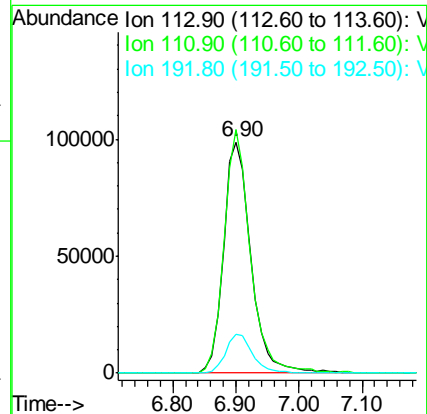
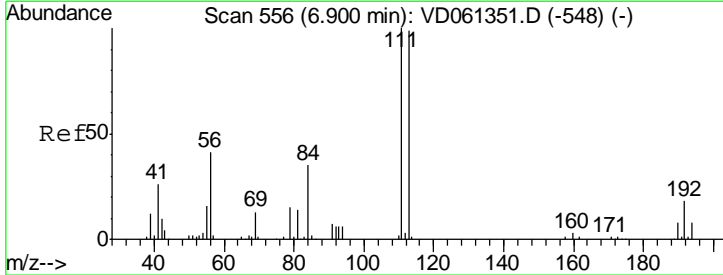
Instrument :
 MSVOA_D
 ClientSampled :
 SU-03-040219-B

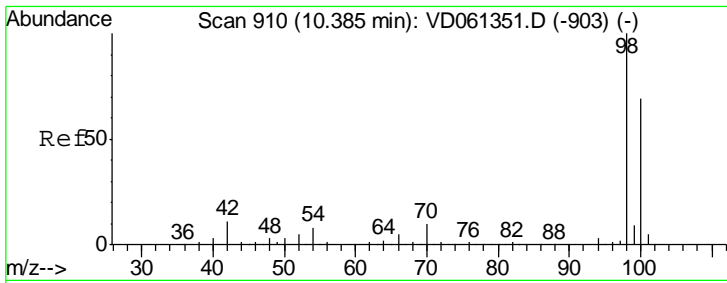
Tgt Ion	Resp	Lower	Upper
114	769726		
63	15.3	0.0	31.6
88	15.8	0.0	33.4



#35
 Dibromofluoromethane
 Concen: 50.000 ug/l
 RT: 6.90 min Scan# 556
 Delta R.T. 0.00 min
 Lab File: VD061583.D
 Acq: 4 Apr 2019 17:12

Tgt Ion	Resp	Lower	Upper
113	298277		
111	105.3	81.0	121.6
192	16.7	14.4	21.6

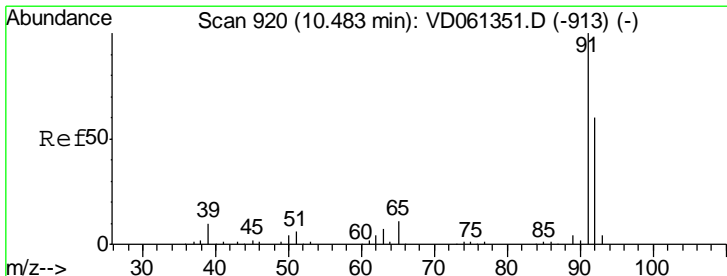
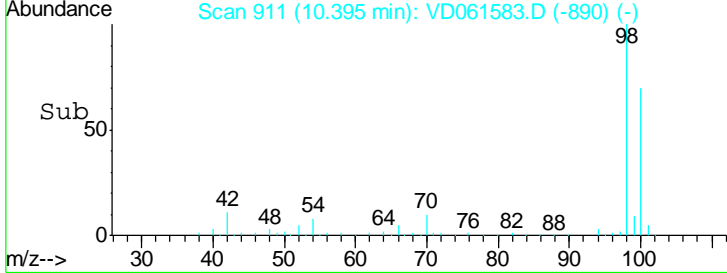
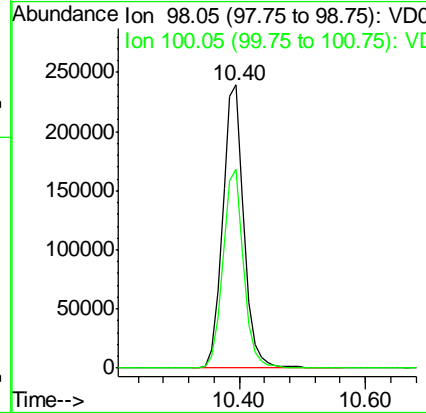
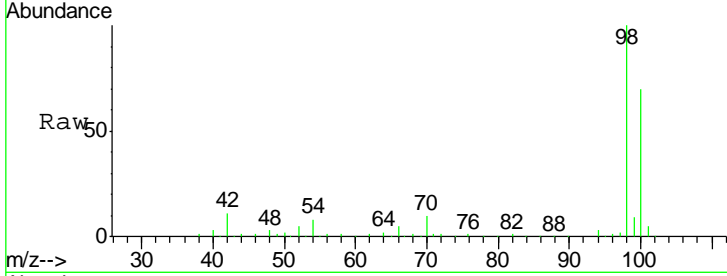




#50
 Toluene-d8
 Concen: N.D. ug/l
 RT: 10.40 min Scan# 911
 Delta R.T. 0.01 min
 Lab File: VD061583.D
 Acq: 4 Apr 2019 17:12

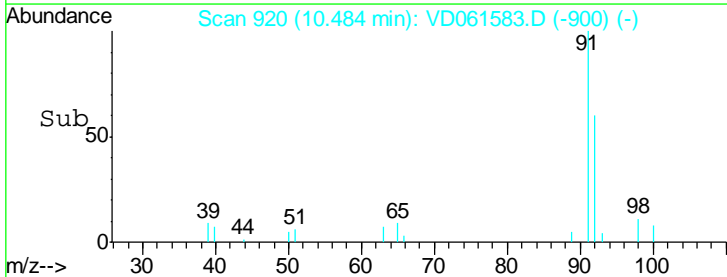
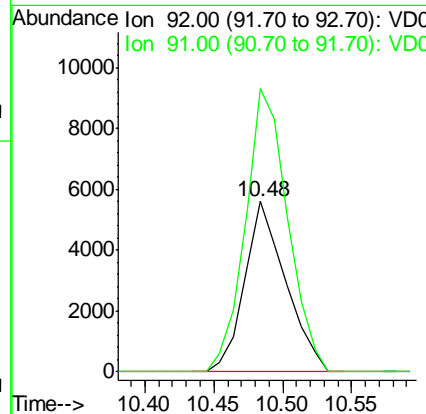
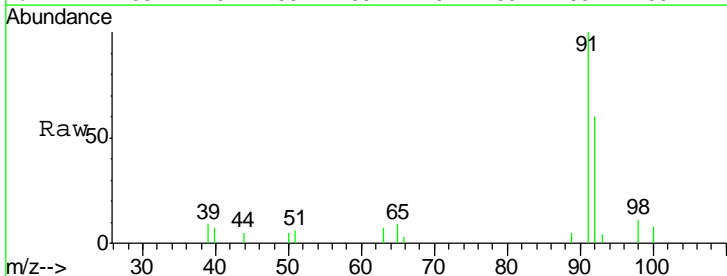
Instrument :
 MSVOA_D
ClientSampled :
 SU-03-040219-B

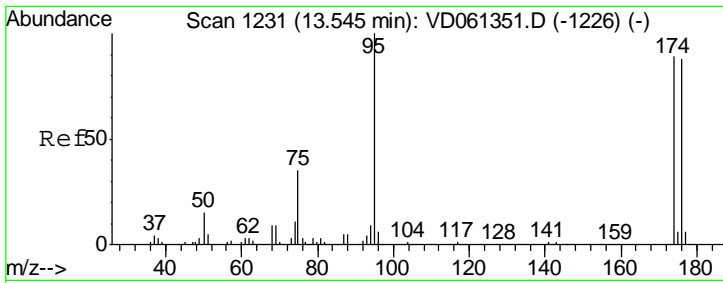
Tgt Ion: 98 Resp: 559676
 Ion Ratio Lower Upper
 98 100
 100 70.2 56.2 84.2



#52
 Toluene
 Concen: 1.138 ug/l
 RT: 10.48 min Scan# 920
 Delta R.T. 0.00 min
 Lab File: VD061583.D
 Acq: 4 Apr 2019 17:12

Tgt Ion: 92 Resp: 11701
 Ion Ratio Lower Upper
 92 100
 91 166.1 133.3 199.9



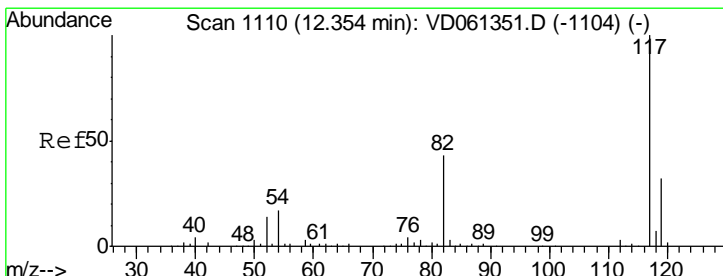
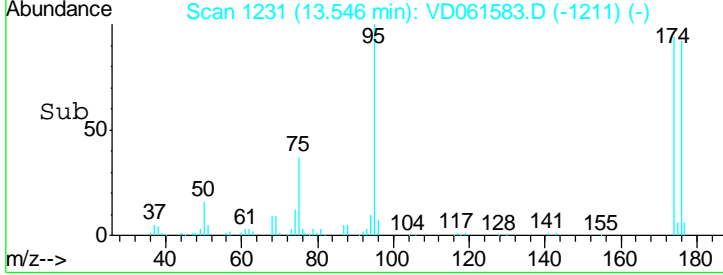
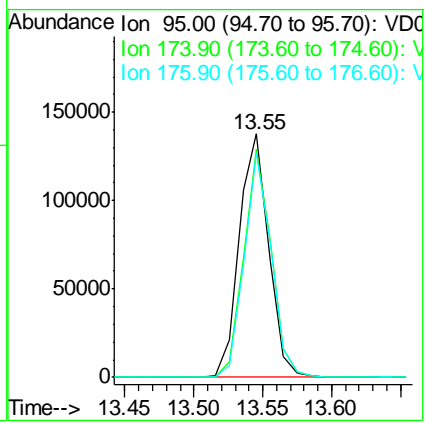
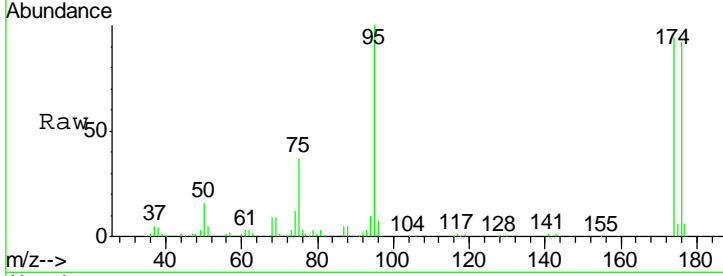


#62
 4-Bromofluorobenzene
 Concen: N.D. ug/l
 RT: 13.55 min Scan# 1231
 Delta R.T. 0.00 min
 Lab File: VD061583.D
 Acq: 4 Apr 2019 17:12

Instrument :
 MSVOA_D
 ClientSampled :
 SU-03-040219-B

Tot Ion: 95 Resp: 204306

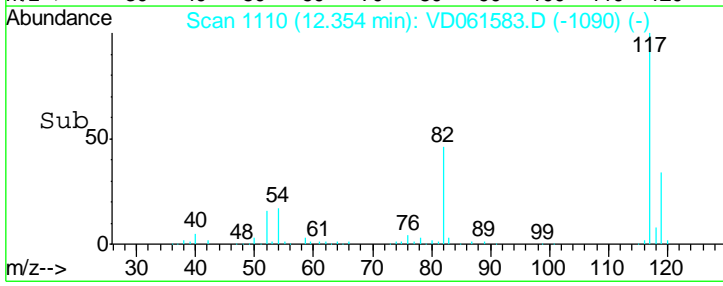
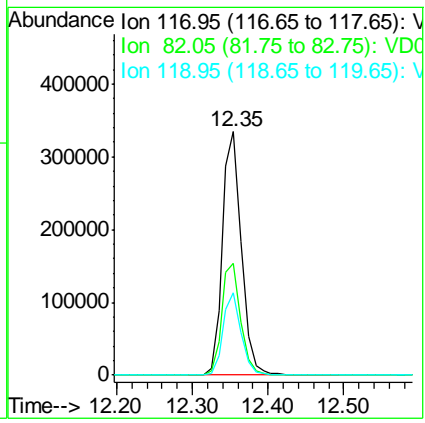
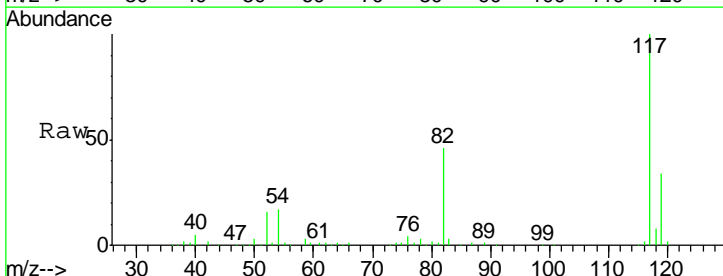
Ion	Ratio	Lower	Upper
95	100		
174	93.6	0.0	178.0
176	92.3	0.0	175.0

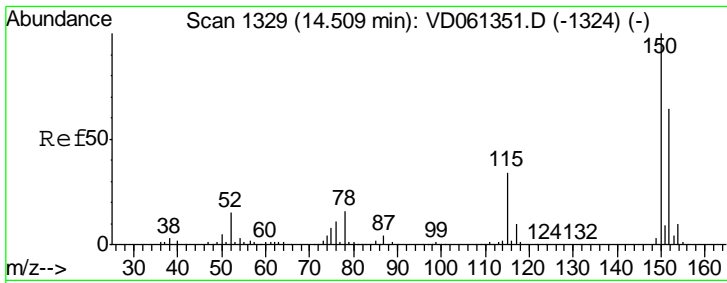


#63
 Chlorobenzene-d5
 Concen: 50.000 ug/l
 RT: 12.35 min Scan# 1110
 Delta R.T. 0.00 min
 Lab File: VD061583.D
 Acq: 4 Apr 2019 17:12

Tgt Ion: 117 Resp: 581691

Ion	Ratio	Lower	Upper
117	100		
82	45.8	34.4	51.6
119	33.6	25.8	38.6

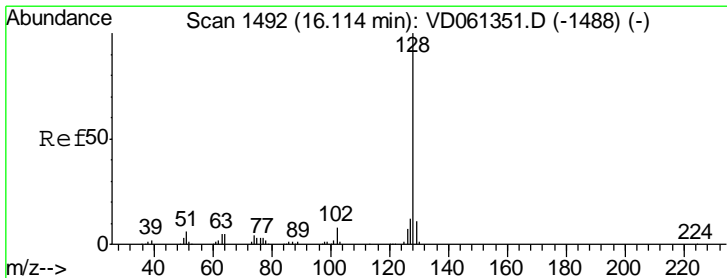
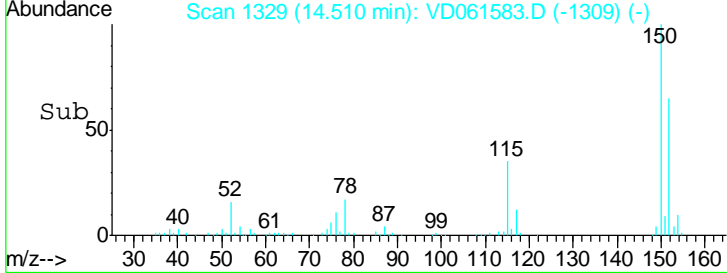
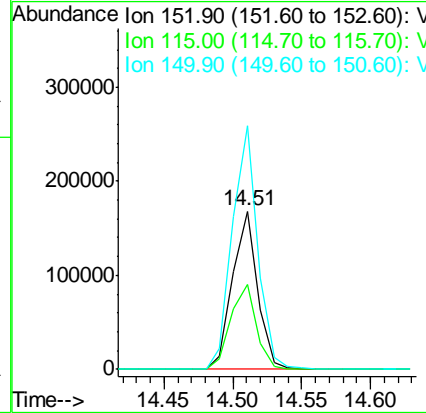
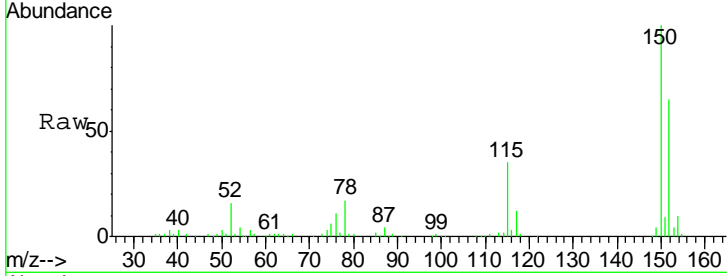




#72
 1,4-Dichlorobenzene-d4
 Concen: 50.000 ug/l
 RT: 14.51 min Scan# 1329
 Delta R.T. 0.00 min
 Lab File: VD061583.D
 Acq: 4 Apr 2019 17:12

Instrument : MSVOA_D
 ClientSampled : SU-03-040219-B

Tgt Ion	Resp	Lower	Upper
152	100		
115	53.2	26.9	80.6
150	153.6	0.0	318.0



#95
 Naphthalene
 Concen: 1.229 ug/l
 RT: 16.11 min Scan# 1492
 Delta R.T. 0.00 min
 Lab File: VD061583.D
 Acq: 4 Apr 2019 17:12

Tgt Ion	Resp	Lower	Upper
128	100		
127	13.2	9.9	14.9
129	7.0	8.9	13.3#

