

Data Path : Z:\voasrv\HPCHEM1\MSVOA_D\Data\VD040423\
 Data File : VD075570.D
 Acq On : 04 Apr 2023 13:19
 Operator : KP/SY
 Sample : VD0404SBL01
 Misc : 5.00G/10.00ml/MSVOA_D/SOIL
 ALS Vial : 3 Sample Multiplier: 1

Instrument :
 MSVOA_D
 ClientSampleId :
 VBLK117

Integration Parameters: LSCINT.P

Integrator: RTE
 Smoothing : OFF
 Sampling : 1
 Start Thrs: 0.2
 Stop Thrs : 0

Filtering: 5
 Min Area: 0 % of largest Peak
 Max Peaks: 100
 Peak Location: TOP

If leading or trailing edge < 100 prefer < Baseline drop else tangent >
 Peak separation: 5

Method : Z:\voasrv\HPCHEM1\MSVOA_D\Method\SFAMDLM033123SMA.M
 Title : SFAM01.0

Signal : TIC: VD075570.D\data.ms

peak #	R.T. min	first scan	max scan	last scan	PK TY	peak height	corr. area	corr. % max.	% of total
1	1.740	13	26	36	rBV	647276	1314765	82.87%	10.541%
2	2.152	92	96	98	rBV3	3080	4832	0.30%	0.039%
3	2.275	112	117	127	rVB	266089	390013	24.58%	3.127%
4	2.805	200	207	217	rBV	208515	386941	24.39%	3.102%
5	3.181	265	271	273	rVB2	813	1468	0.09%	0.012%
6	3.634	346	348	350	rVB2	729	623	0.04%	0.005%
7	3.658	350	352	353	rBV	515	485	0.03%	0.004%
8	3.746	365	367	369	rVB2	630	491	0.03%	0.004%
9	3.917	386	396	410	rBV	217465	563196	35.50%	4.515%
10	4.140	429	434	435	rBV2	983	1317	0.08%	0.011%
11	4.264	452	455	456	rBV2	1143	1467	0.09%	0.012%
12	4.487	490	493	495	rBV2	760	669	0.04%	0.005%
13	4.681	524	526	530	rVB2	460	548	0.03%	0.004%
14	4.805	537	547	559	rVB3	13635	41492	2.62%	0.333%
15	4.987	576	578	581	rBV2	404	563	0.04%	0.005%
16	5.169	607	609	612	rVB2	456	462	0.03%	0.004%
17	5.234	618	620	622	rBV	1200	842	0.05%	0.007%
18	5.340	636	638	640	rBV	675	580	0.04%	0.005%
19	5.517	667	668	672	rBV	655	482	0.03%	0.004%
20	5.658	689	692	694	rBV	676	614	0.04%	0.005%
21	5.816	716	719	720	rBV2	1905	1855	0.12%	0.015%
22	6.158	775	777	779	rBV	877	823	0.05%	0.007%
23	6.205	782	785	789	rBV	503	941	0.06%	0.008%
24	6.422	821	822	824	rBV	697	487	0.03%	0.004%
25	6.505	834	836	838	rVB2	875	648	0.04%	0.005%
26	6.546	841	843	846	rVV2	535	707	0.04%	0.006%
27	6.728	870	874	877	rBV2	450	719	0.05%	0.006%
28	6.852	894	895	897	rBV	799	483	0.03%	0.004%
29	6.905	902	904	906	rBV	601	561	0.04%	0.004%
30	6.987	908	918	925	rBV2	27949	79191	4.99%	0.635%
31	7.322	973	975	978	rVB2	866	709	0.04%	0.006%
32	7.352	978	980	983	rBV	479	572	0.04%	0.005%
33	7.487	1000	1003	1006	rVB	980	1198	0.08%	0.010%
34	7.569	1006	1017	1032	rBV2	237917	626048	39.46%	5.019%
35	7.793	1051	1055	1056	rBV2	581	600	0.04%	0.005%
36	7.863	1063	1067	1068	rBV2	1028	808	0.05%	0.006%

Data Path : Z:\voasrv\HPCHEM1\MSVOA_D\Data\VD040423\
 Data File : VD075570.D
 Acq On : 04 Apr 2023 13:19
 Operator : KP/SY
 Sample : VD0404SBL01
 Misc : 5.00G/10.00ml/MSVOA_D/SOIL
 ALS Vial : 3 Sample Multiplier: 1

Instrument :
 MSVOA_D
 ClientSampleId :
 VBLK117

Integration Parameters: LSCINT.P

Integrator: RTE
 Smoothing : OFF
 Sampling : 1
 Start Thrs: 0.2
 Stop Thrs : 0

Filtering: 5
 Min Area: 0 % of largest Peak
 Max Peaks: 100
 Peak Location: TOP

If leading or trailing edge < 100 prefer < Baseline drop else tangent >
 Peak separation: 5

Method : Z:\voasrv\HPCHEM1\MSVOA_D\Method\SFAMDLM033123SMA.M
 Title : SFAM01.0

37	8.005	1088	1091	1092	rBV2	639	497	0.03%	0.004%
38	8.046	1096	1098	1102	rBV2	604	810	0.05%	0.006%
39	8.205	1113	1125	1143	rBV2	556666	1586496	100.00%	12.720%
40	8.505	1174	1176	1178	rVB2	903	764	0.05%	0.006%
41	8.534	1178	1181	1183	rBV	879	1123	0.07%	0.009%
42	8.699	1206	1209	1210	rBV2	804	964	0.06%	0.008%
43	8.775	1214	1222	1234	rVV	461666	937910	59.12%	7.520%
44	8.940	1248	1250	1252	rVB	902	489	0.03%	0.004%
45	9.010	1259	1262	1269	rBV4	2349	5171	0.33%	0.041%
46	9.210	1287	1296	1312	rBV	308244	638051	40.22%	5.116%
47	9.569	1355	1357	1358	rBV	830	616	0.04%	0.005%
48	9.646	1368	1370	1373	rVB	884	712	0.04%	0.006%
49	9.681	1373	1376	1377	rBV2	802	611	0.04%	0.005%
50	9.740	1384	1386	1388	rVB2	728	507	0.03%	0.004%
51	9.834	1400	1402	1403	rBV	1300	904	0.06%	0.007%
52	9.981	1418	1427	1437	rBV	169745	313883	19.78%	2.517%
53	10.087	1443	1445	1447	rVB	855	707	0.04%	0.006%
54	10.110	1447	1449	1452	rBV2	751	1017	0.06%	0.008%
55	10.157	1454	1457	1459	rBV2	1245	1413	0.09%	0.011%
56	10.269	1468	1476	1491	rBV	760423	1354612	85.38%	10.860%
57	10.481	1508	1512	1513	rBV2	759	1011	0.06%	0.008%
58	10.528	1513	1520	1530	rVB	110832	195066	12.30%	1.564%
59	10.663	1536	1543	1551	rVV	53510	98824	6.23%	0.792%
60	10.810	1564	1568	1572	rVB6	2571	3829	0.24%	0.031%
61	10.875	1573	1579	1591	rBV	108358	183746	11.58%	1.473%
62	11.034	1599	1606	1614	rBV2	47720	84674	5.34%	0.679%
63	11.128	1620	1622	1623	rBV	867	477	0.03%	0.004%
64	11.175	1629	1630	1633	rBV	740	500	0.03%	0.004%
65	11.210	1633	1636	1638	rBV2	598	712	0.04%	0.006%
66	11.293	1648	1650	1653	rVB	753	663	0.04%	0.005%
67	11.328	1653	1656	1657	rBV2	748	491	0.03%	0.004%
68	11.351	1659	1660	1662	rVV	1782	1339	0.08%	0.011%
69	11.404	1664	1669	1676	rVB	22585	38998	2.46%	0.313%
70	11.457	1676	1678	1680	rBV	641	476	0.03%	0.004%
71	11.493	1682	1684	1685	rBV	721	573	0.04%	0.005%
72	11.581	1692	1699	1712	rVV	639436	1099031	69.27%	8.811%
73	12.128	1786	1792	1800	rVB6	3186	6762	0.43%	0.054%
74	12.187	1800	1802	1804	rBV2	667	544	0.03%	0.004%
75	12.422	1837	1842	1846	rBV4	3138	5502	0.35%	0.044%
76	12.481	1850	1852	1853	rBV	804	557	0.04%	0.004%

Data Path : Z:\voasrv\HPCHEM1\MSVOA_D\Data\VD040423\
 Data File : VD075570.D
 Acq On : 04 Apr 2023 13:19
 Operator : KP/SY
 Sample : VD0404SBL01
 Misc : 5.00G/10.00ml/MSVOA_D/SOIL
 ALS Vial : 3 Sample Multiplier: 1

Instrument :
 MSVOA_D
 ClientSampleId :
 VBLK117

Integration Parameters: LSCINT.P

Integrator: RTE
 Smoothing : OFF Filtering: 5
 Sampling : 1 Min Area: 0 % of largest Peak
 Start Thrs: 0.2 Max Peaks: 100
 Stop Thrs : 0 Peak Location: TOP

If leading or trailing edge < 100 prefer < Baseline drop else tangent >
 Peak separation: 5

Method : Z:\voasrv\HPCHEM1\MSVOA_D\Method\SFAMDLM033123SMA.M
 Title : SFAM01.0

77	12.581	1863	1869	1874	rVB3	16621	27072	1.71%	0.217%
78	12.651	1874	1881	1888	rBV2	245604	410658	25.88%	3.292%
79	12.757	1897	1899	1901	rBV2	1363	1554	0.10%	0.012%
80	12.904	1920	1924	1929	rBV3	12717	16673	1.05%	0.134%
81	13.016	1940	1943	1944	rBV	563	591	0.04%	0.005%
82	13.134	1961	1963	1965	rBV2	684	608	0.04%	0.005%
83	13.169	1965	1969	1972	rVV3	1992	3345	0.21%	0.027%
84	13.204	1972	1975	1979	rVB3	1982	3192	0.20%	0.026%
85	13.275	1982	1987	1991	rBV	4185	5670	0.36%	0.045%
86	13.346	1995	1999	2001	rBV3	2533	2756	0.17%	0.022%
87	13.463	2010	2019	2021	rBV6	7548	13600	0.86%	0.109%
88	13.522	2022	2029	2048	rVB	601995	983991	62.02%	7.889%
89	13.734	2063	2065	2068	rBV2	1249	963	0.06%	0.008%
90	13.816	2072	2079	2088	rVB	579809	959499	60.48%	7.693%
91	13.910	2093	2095	2098	rBV2	926	1188	0.07%	0.010%
92	13.981	2105	2107	2109	rVB	872	725	0.05%	0.006%
93	14.051	2113	2119	2124	rVV4	6719	11335	0.71%	0.091%
94	14.487	2191	2193	2195	rBV2	733	681	0.04%	0.005%
95	14.598	2208	2212	2216	rVB4	2882	3863	0.24%	0.031%
96	15.098	2293	2297	2303	rVB2	6484	9854	0.62%	0.079%
97	15.334	2333	2337	2345	rVB3	6124	8319	0.52%	0.067%
98	15.416	2347	2351	2355	rVB	4590	5710	0.36%	0.046%
99	15.892	2431	2432	2435	rBV2	1026	1021	0.06%	0.008%
100	16.069	2460	2462	2463	rBV2	1180	759	0.05%	0.006%

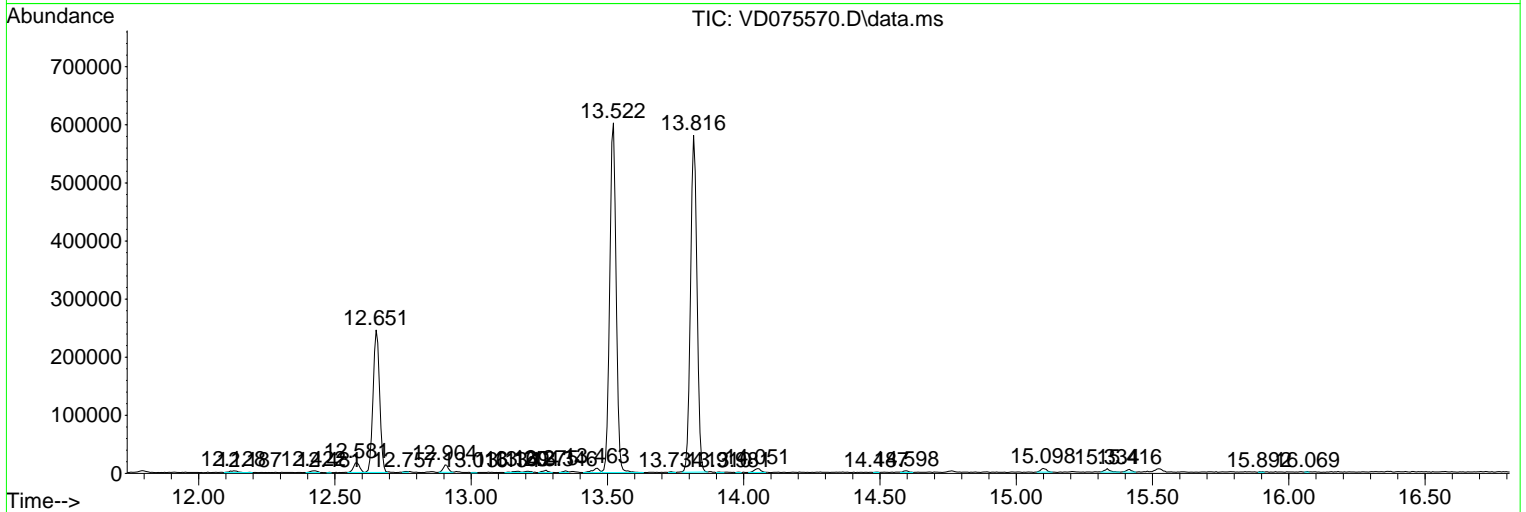
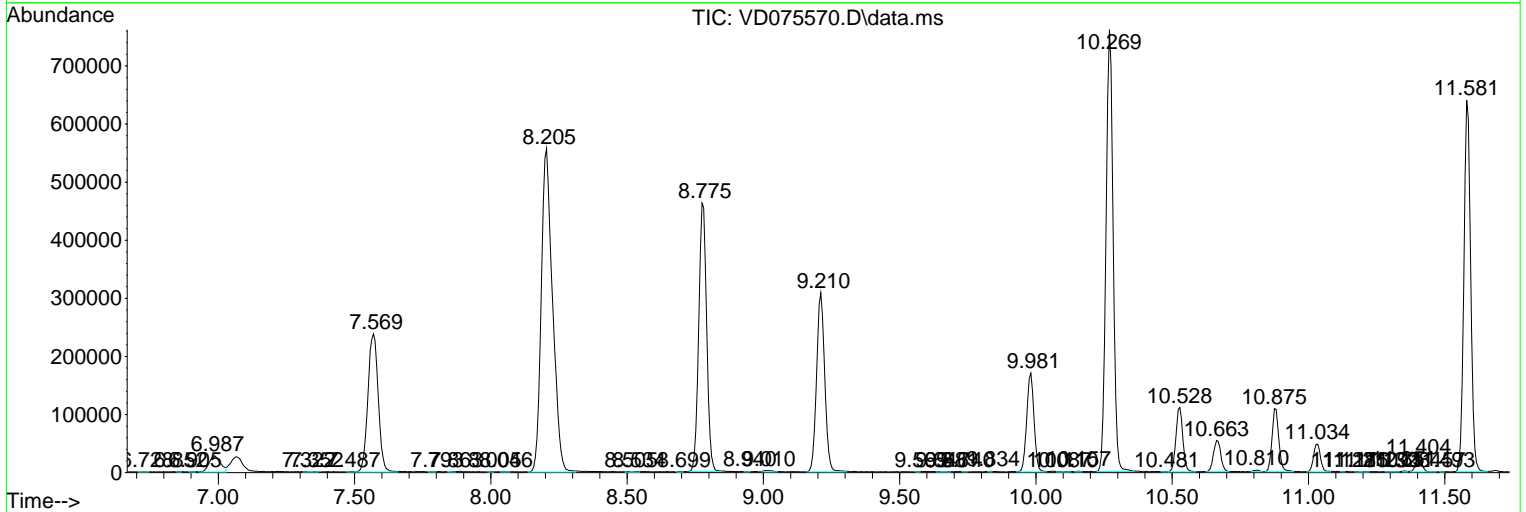
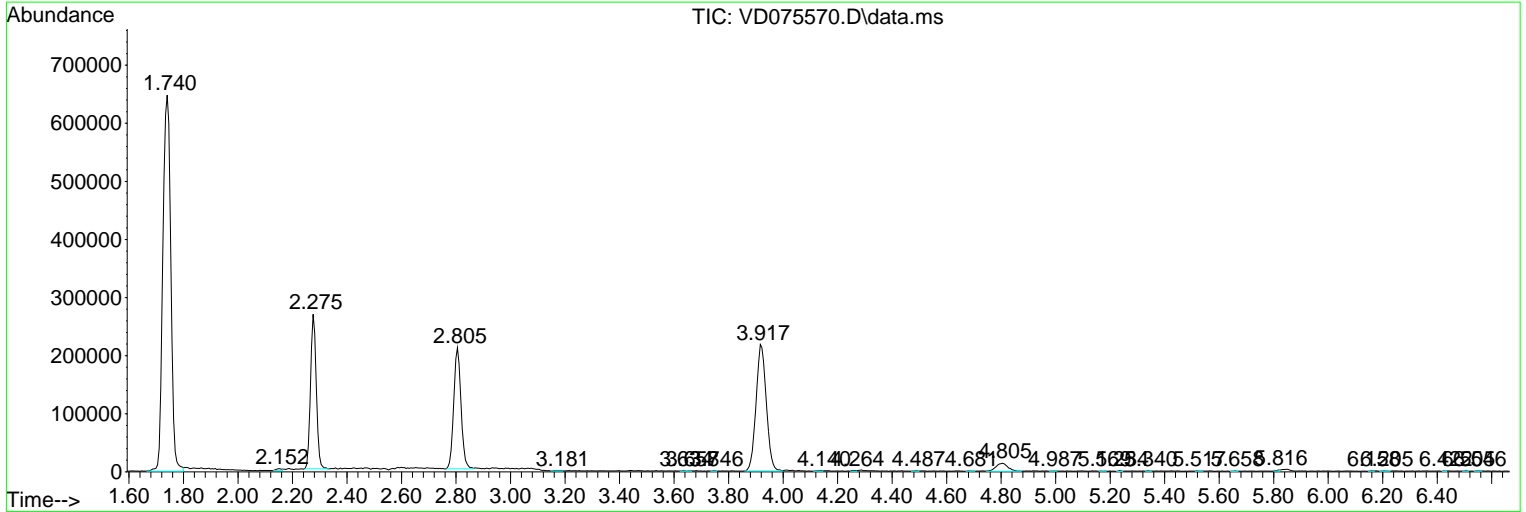
Sum of corrected areas: 12472859

Data Path : Z:\voasrv\HPCHEM1\MSVOA_D\Data\VD040423\
 Data File : VD075570.D
 Acq On : 04 Apr 2023 13:19
 Operator : KP/SY
 Sample : VD0404SBL01
 Misc : 5.00G/10.00ml/MSVOA_D/SOIL
 ALS Vial : 3 Sample Multiplier: 1

Instrument :
 MSVOA_D
 ClientSampleId :
 VBLK117

Quant Method : Z:\voasrv\HPCHEM1\MSVOA_D\Method\SFAMDLM033123SMA.M
 Quant Title : SFAM01.0

TIC Library : C:\Database\NIST20.L
 TIC Integration Parameters: LSCINT.P



Library Search Compound Report

Data Path : Z:\voasrv\HPCHEM1\MSVOA_D\Data\VD040423\
Data File : VD075570.D
Acq On : 04 Apr 2023 13:19
Operator : KP/SY
Sample : VD0404SBL01
Misc : 5.00G/10.00ml/MSVOA_D/SOIL
ALS Vial : 3 Sample Multiplier: 1

Instrument :
MSVOA_D
ClientSampleId :
VBLK117

Quant Method : Z:\voasrv\HPCHEM1\MSVOA_D\Method\SFAMDLM033123SMA.M
Quant Title : SFAM01.0

TIC Library : C:\Database\NIST20.L
TIC Integration Parameters: LSCINT.P

No Library Search Compounds Detected

Data Path : Z:\voasrv\HPCHEM1\MSVOA_D\Data\VD040423\
Data File : VD075570.D
Acq On : 04 Apr 2023 13:19
Operator : KP/SY
Sample : VD0404SBL01
Misc : 5.00G/10.00ml/MSVOA_D/SOIL
ALS Vial : 3 Sample Multiplier: 1

Instrument :
MSVOA_D
ClientSampleId :
VBLK117

Quant Method : Z:\voasrv\HPCHEM1\MSVOA_D\Method\SFAMDLM033123SMA.M
Quant Title : SFAM01.0

TIC Library : C:\Database\NIST20.L
TIC Integration Parameters: LSCINT.P

TIC Top Hit name	RT	EstConc	Units	Response	#	RT	Resp	Conc
------------------	----	---------	-------	----------	---	----	------	------
