

Data Path : Z:\voasrv\HPCHEM1\MSVOA_D\Data\VD040622\
 Data File : VD072545.D
 Acq On : 06 Apr 2022 12:14
 Operator : VA/SY
 Sample : VD0406SBL01
 Misc : 5.00G/5.00ml/MSVOA_D/SOIL
 ALS Vial : 3 Sample Multiplier: 1

Instrument :
 MSVOA_D
 ClientSampleId :
 VD0406SBL01

Quant Time: Apr 07 01:10:05 2022
 Quant Method : Z:\voasrv\HPCHEM1\MSVOA_D\Method\82D032922S.M
 Quant Title : SW846 8260
 QLast Update : Wed Mar 30 02:44:36 2022
 Response via : Initial Calibration

Compound	R.T.	QIon	Response	Conc	Units	Dev(Min)

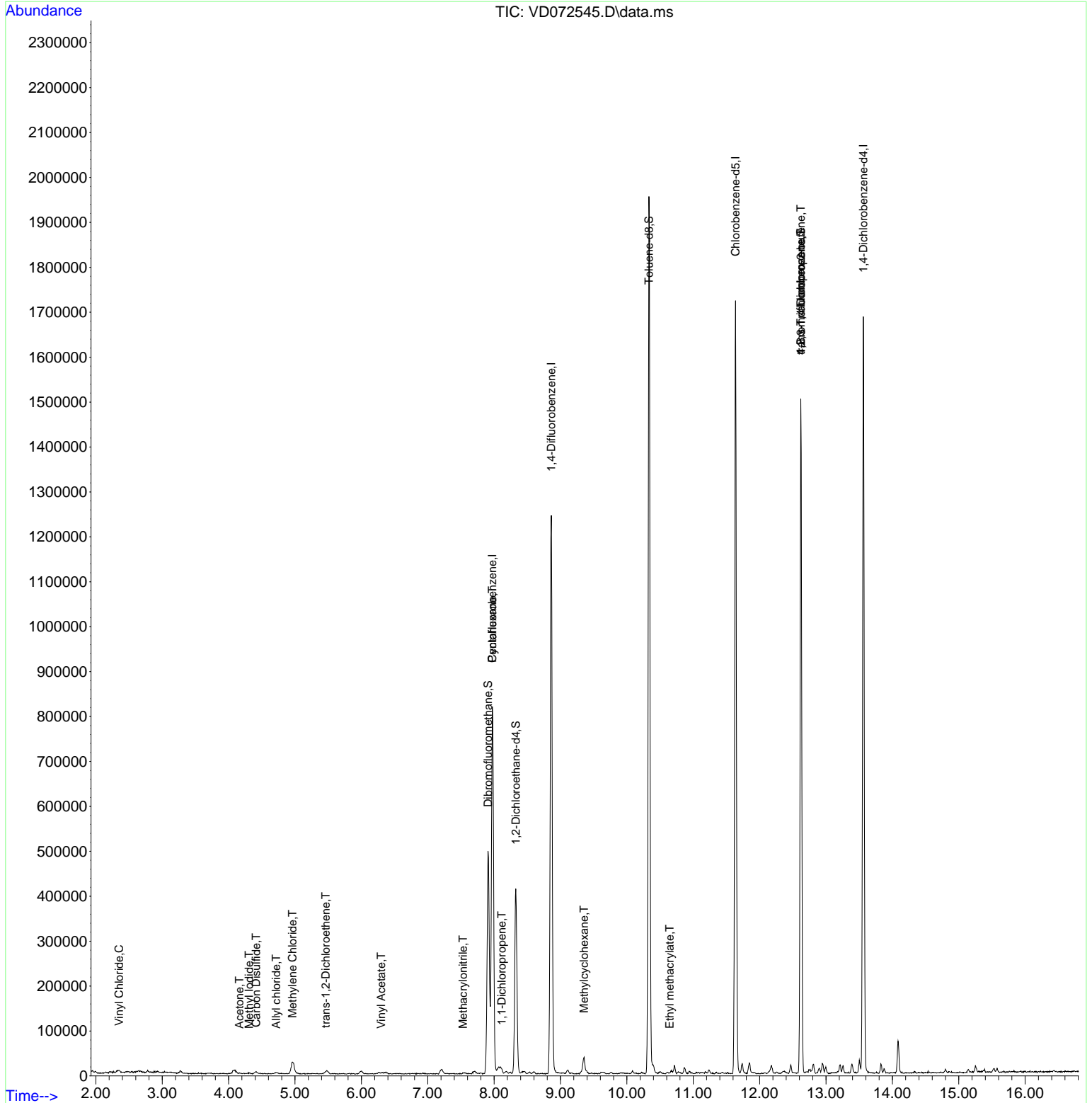
Internal Standards						
1) Pentafluorobenzene	7.973	168	604279	50.000	ug/l	0.00
34) 1,4-Difluorobenzene	8.861	114	1087370	50.000	ug/l	0.00
63) Chlorobenzene-d5	11.638	117	1004349	50.000	ug/l	0.00
72) 1,4-Dichlorobenzene-d4	13.561	152	449509	50.000	ug/l	0.00
System Monitoring Compounds						
33) 1,2-Dichloroethane-d4	8.326	65	329046	45.014	ug/l	0.00
Spiked Amount	50.000	Range	50 - 163	Recovery	=	90.020%
35) Dibromofluoromethane	7.909	113	354943	42.003	ug/l	0.00
Spiked Amount	50.000	Range	54 - 147	Recovery	=	84.000%
50) Toluene-d8	10.332	98	1320760	44.963	ug/l	0.00
Spiked Amount	50.000	Range	49 - 140	Recovery	=	89.920%
62) 4-Bromofluorobenzene	12.620	95	451898	39.392	ug/l	0.00
Spiked Amount	50.000	Range	25 - 144	Recovery	=	78.780%
Target Compounds						
						Qvalue
4) Vinyl Chloride	2.350	62	2477	1.427	ug/l	100
10) Methyl Iodide	4.309	142	2398	4.074	ug/l #	93
14) Allyl chloride	4.715	41	2966	1.431	ug/l	86
16) Acetone	4.162	43	3255	2.388	ug/l #	58
17) Carbon Disulfide	4.415	76	8569	4.302	ug/l	96
20) Methylene Chloride	4.962	84	20452	2.520	ug/l #	73
21) trans-1,2-Dichloroethene	5.462	96	2505	1.127	ug/l #	61
23) Vinyl Acetate	6.297	43	2227	6.474	ug/l	98
31) Cyclohexane	7.973	56	19450	2.035	ug/l #	1
36) 1,1-Dichloropropene	8.114	75	4499	1.531	ug/l	92
39) Methylcyclohexane	9.356	83	14668	3.976	ug/l #	83
41) Methacrylonitrile	7.532	41	426	1.815	ug/l #	52
56) Ethyl methacrylate	10.644	69	775	1.285	ug/l #	64
76) 1,2,3-Trichloropropane	12.620	75	229886	46.890	ug/l #	100
81) trans-1,4-Dichloro-2-b...	12.620	75	229886	115.060	ug/l #	7

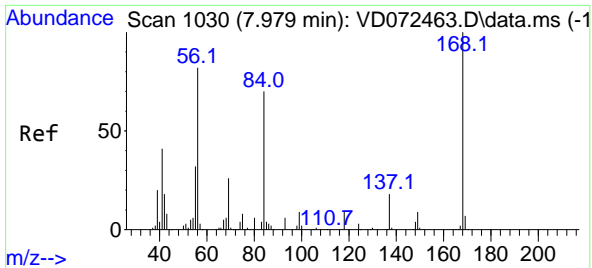
(#) = qualifier out of range (m) = manual integration (+) = signals summed

Data Path : Z:\voasrv\HPCHEM1\MSVOA_D\Data\VD040622\
 Data File : VD072545.D
 Acq On : 06 Apr 2022 12:14
 Operator : VA/SY
 Sample : VD0406SBL01
 Misc : 5.00G/5.00ml/MSVOA_D/SOIL
 ALS Vial : 3 Sample Multiplier: 1

Instrument :
 MSVOA_D
 ClientSampleId :
 VD0406SBL01

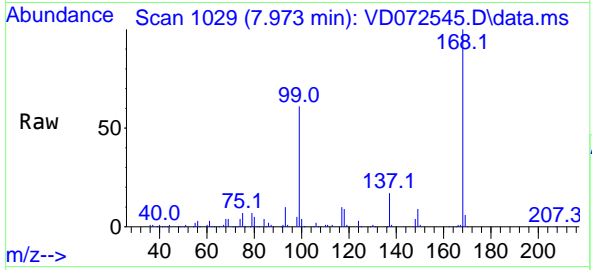
Quant Time: Apr 07 01:10:05 2022
 Quant Method : Z:\voasrv\HPCHEM1\MSVOA_D\Method\82D032922S.M
 Quant Title : SW846 8260
 QLast Update : Wed Mar 30 02:44:36 2022
 Response via : Initial Calibration



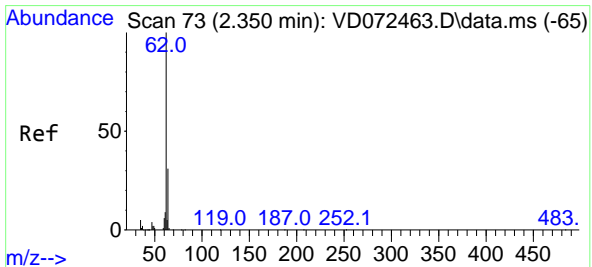
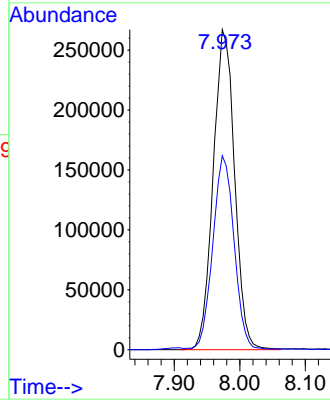
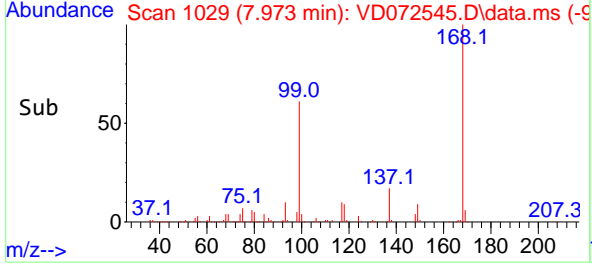


#1
 Pentafluorobenzene
 Concen: 50.000 ug/l
 RT: 7.973 min Scan# 10
 Delta R.T. -0.006 min
 Lab File: VD072545.D
 Acq: 06 Apr 2022 12:14

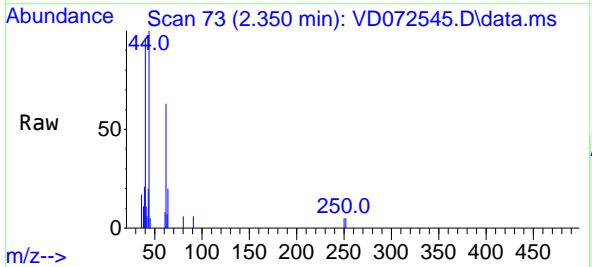
Instrument : MSVOA_D
 ClientSampleId : VD0406SBL01



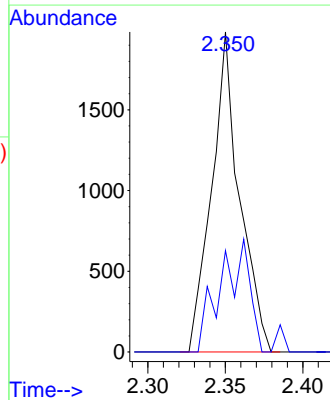
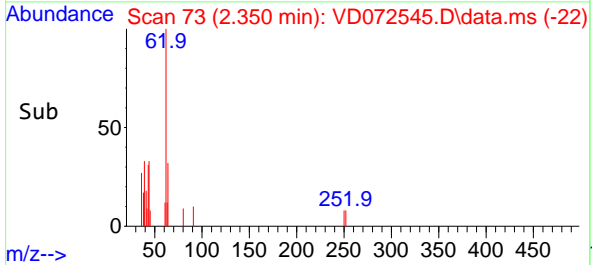
Tgt Ion:168 Resp: 604279
 Ion Ratio Lower Upper
 168 100
 99 60.5 49.8 74.6

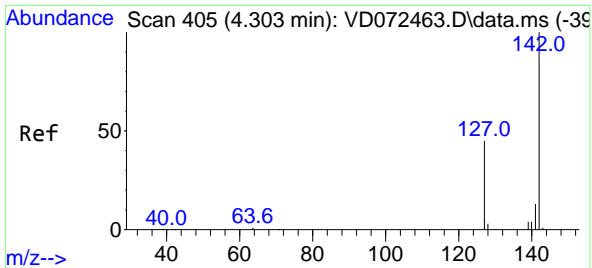


#4
 Vinyl Chloride
 Concen: 1.427 ug/l
 RT: 2.350 min Scan# 73
 Delta R.T. 0.000 min
 Lab File: VD072545.D
 Acq: 06 Apr 2022 12:14



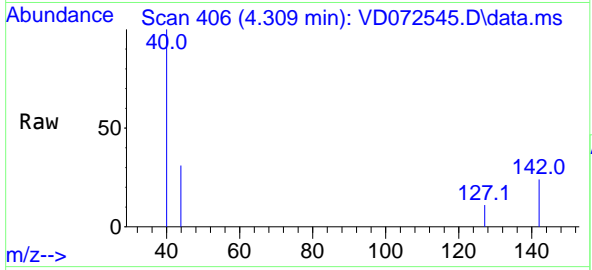
Tgt Ion: 62 Resp: 2477
 Ion Ratio Lower Upper
 62 100
 64 31.7 25.4 38.0





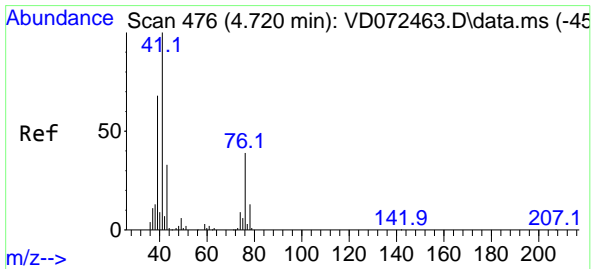
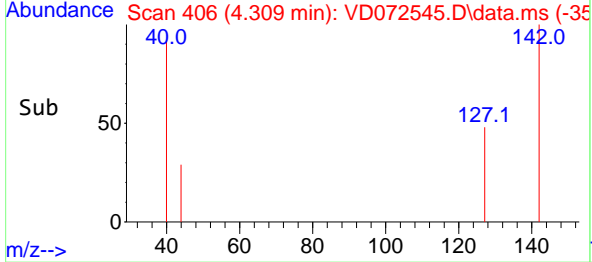
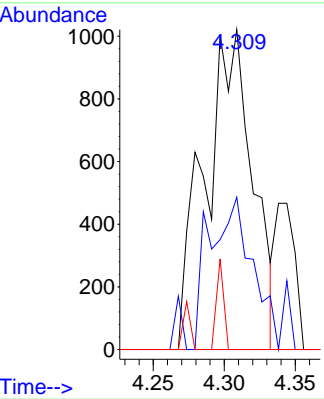
#10
 Methyl Iodide
 Concen: 4.074 ug/l
 RT: 4.309 min Scan# 405
 Delta R.T. 0.006 min
 Lab File: VD072545.D
 Acq: 06 Apr 2022 12:14

Instrument : MSVOA_D
 ClientSampleId : VD0406SBL01

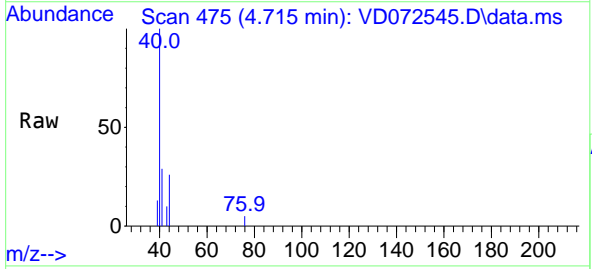


Tgt Ion:142 Resp: 2398

Ion	Ratio	Lower	Upper
142	100		
127	45.3	37.3	55.9
141	4.3	11.7	17.5#

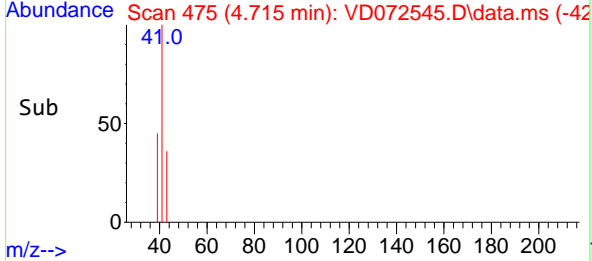
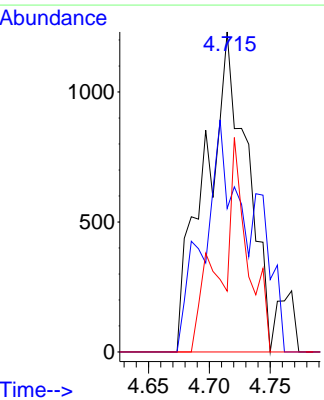


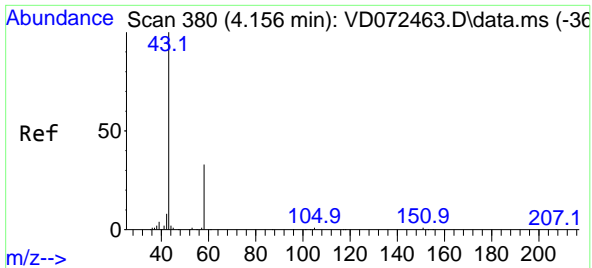
#14
 Allyl chloride
 Concen: 1.431 ug/l
 RT: 4.715 min Scan# 475
 Delta R.T. -0.005 min
 Lab File: VD072545.D
 Acq: 06 Apr 2022 12:14



Tgt Ion: 41 Resp: 2966

Ion	Ratio	Lower	Upper
41	100		
39	59.4	59.3	88.9
76	28.8	25.7	38.5

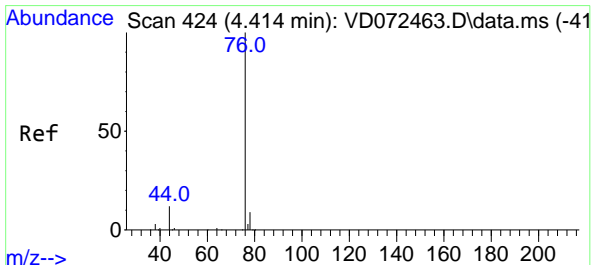
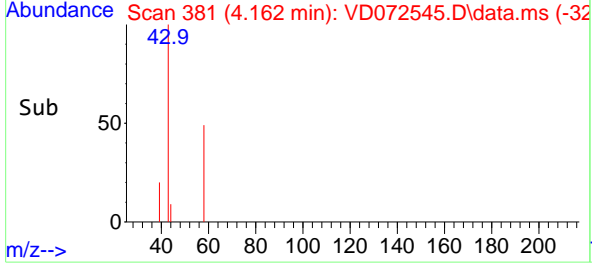
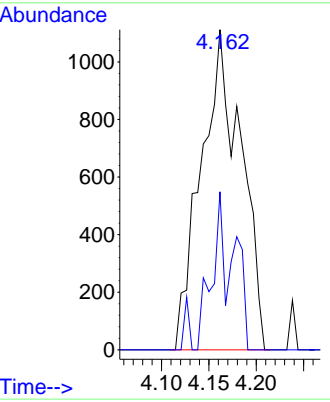
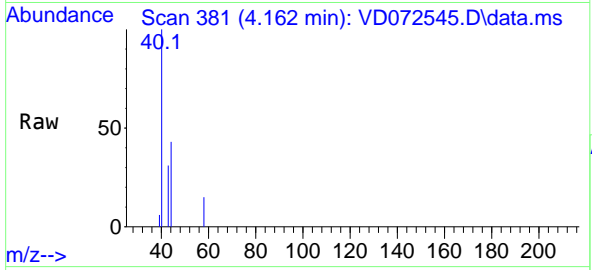




#16
 Acetone
 Concen: 2.388 ug/l
 RT: 4.162 min Scan# 381
 Delta R.T. 0.006 min
 Lab File: VD072545.D
 Acq: 06 Apr 2022 12:14

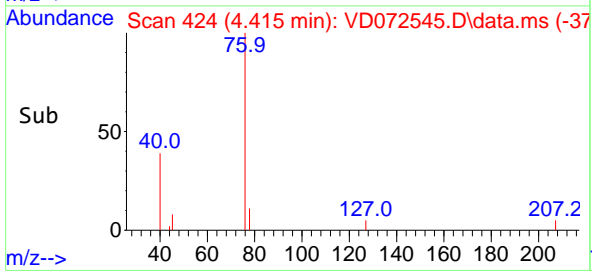
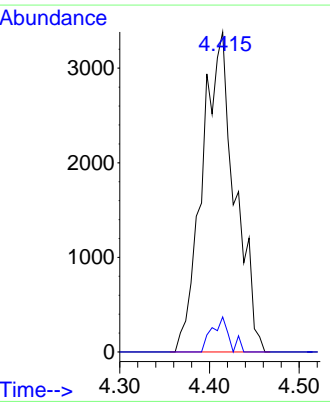
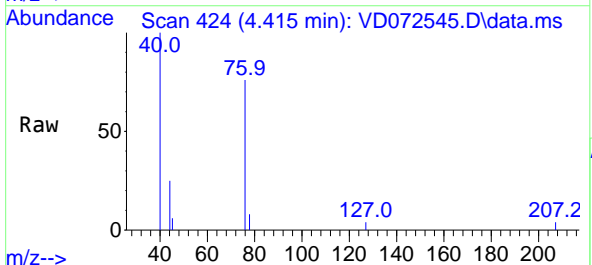
Instrument : MSVOA_D
 ClientSampleId : VD0406SBL01

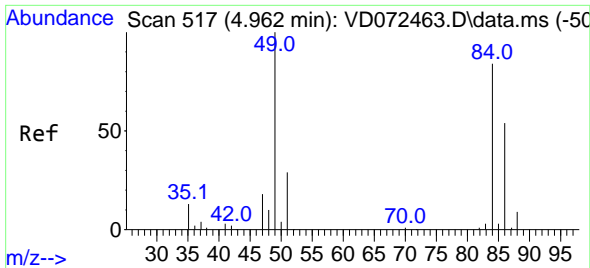
Tgt Ion: 43 Resp: 3255
 Ion Ratio Lower Upper
 43 100
 58 49.4 22.1 33.1#



#17
 Carbon Disulfide
 Concen: 4.302 ug/l
 RT: 4.415 min Scan# 424
 Delta R.T. 0.001 min
 Lab File: VD072545.D
 Acq: 06 Apr 2022 12:14

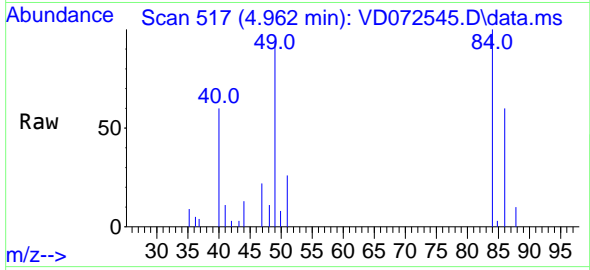
Tgt Ion: 76 Resp: 8569
 Ion Ratio Lower Upper
 76 100
 78 11.0 7.5 11.3



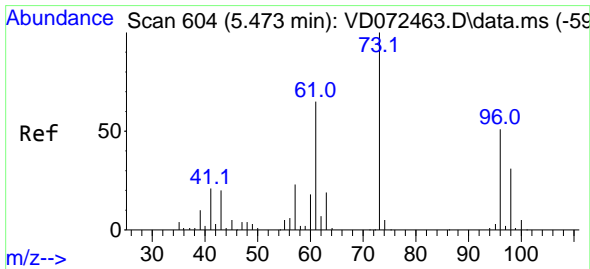
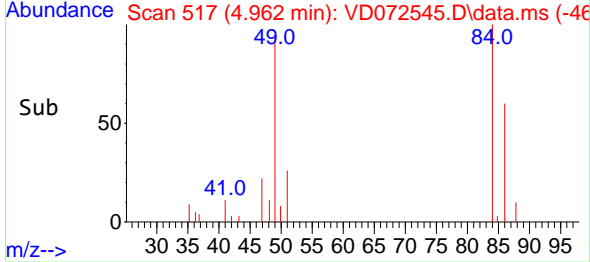
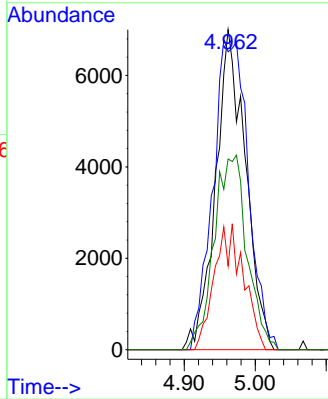


#20
 Methylene Chloride
 Concen: 2.520 ug/l
 RT: 4.962 min Scan# 517
 Delta R.T. 0.000 min
 Lab File: VD072545.D
 Acq: 06 Apr 2022 12:14

Instrument : MSVOA_D
 ClientSampleId : VD0406SBL01

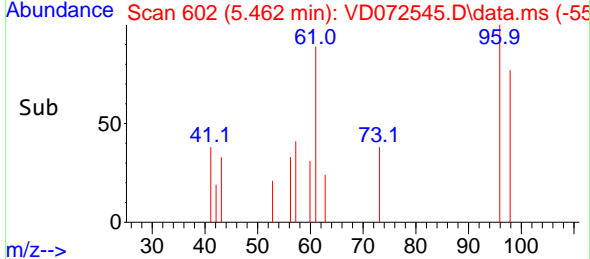
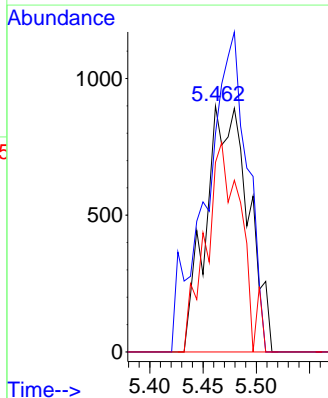
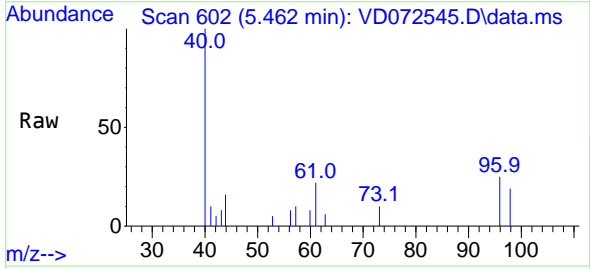


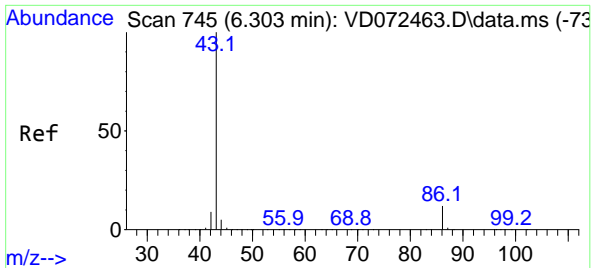
Tgt Ion: 84 Resp: 20452
 Ion Ratio Lower Upper
 84 100
 49 93.1 112.8 169.2#
 51 26.2 32.6 48.8#
 86 59.6 47.9 71.9



#21
 trans-1,2-Dichloroethene
 Concen: 1.127 ug/l
 RT: 5.462 min Scan# 602
 Delta R.T. -0.011 min
 Lab File: VD072545.D
 Acq: 06 Apr 2022 12:14

Tgt Ion: 96 Resp: 2505
 Ion Ratio Lower Upper
 96 100
 61 88.8 117.9 176.9#
 98 77.1 49.4 74.2#

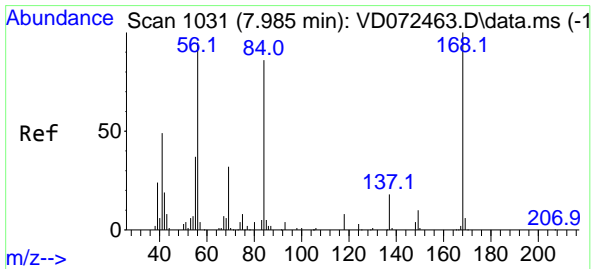
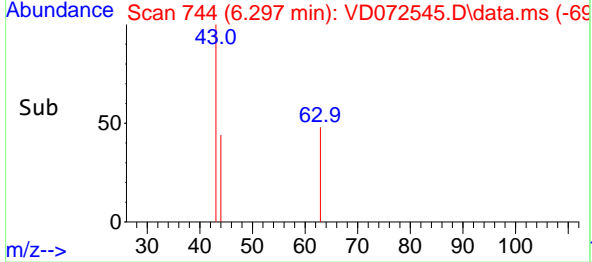
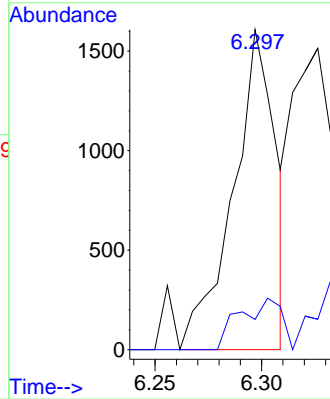
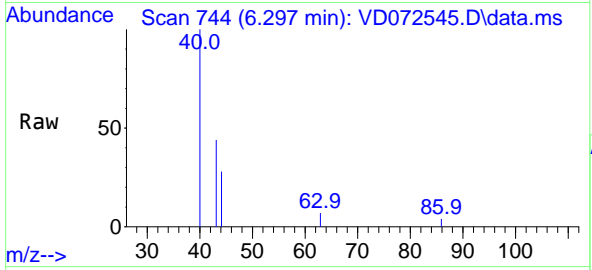




#23
 Vinyl Acetate
 Concen: 6.474 ug/l
 RT: 6.297 min Scan# 744
 Delta R.T. -0.006 min
 Lab File: VD072545.D
 Acq: 06 Apr 2022 12:14

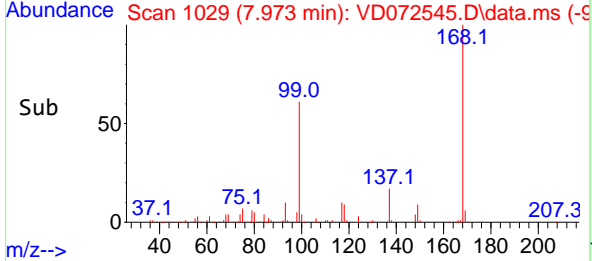
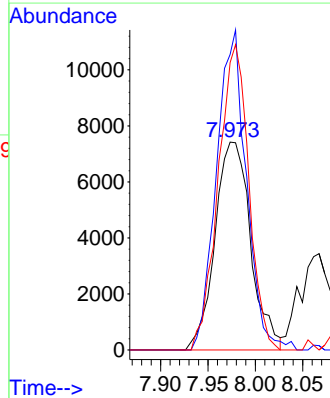
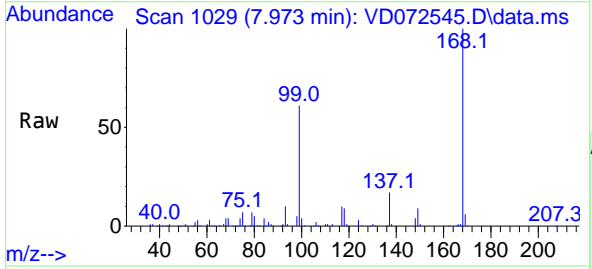
Instrument : MSVOA_D
 ClientSampleId : VD0406SBL01

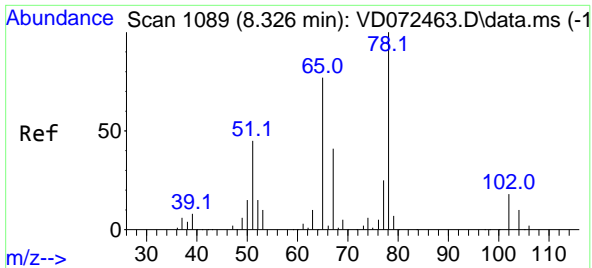
Tgt Ion: 43 Resp: 2227
 Ion Ratio Lower Upper
 43 100
 86 9.5 7.1 10.7



#31
 Cyclohexane
 Concen: 2.035 ug/l
 RT: 7.973 min Scan# 1029
 Delta R.T. -0.012 min
 Lab File: VD072545.D
 Acq: 06 Apr 2022 12:14

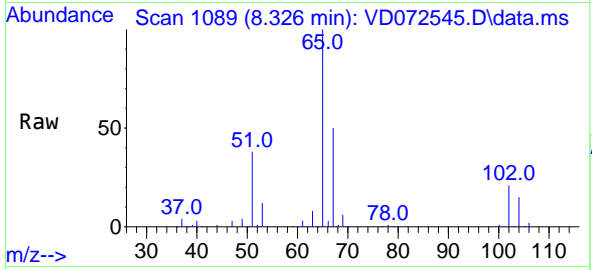
Tgt Ion: 56 Resp: 19450
 Ion Ratio Lower Upper
 56 100
 69 142.2 25.4 38.2#
 84 138.3 63.0 94.4#



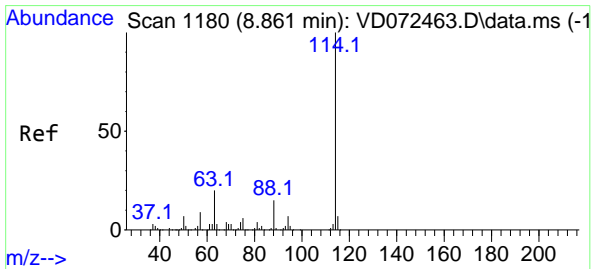
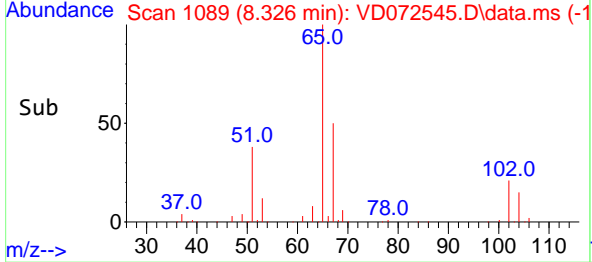
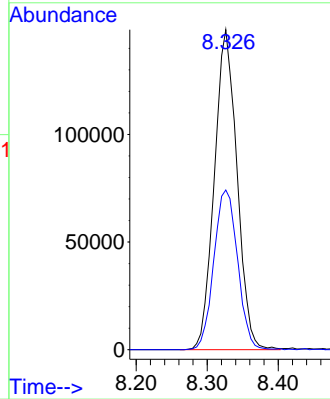


#33
 1,2-Dichloroethane-d4
 Concen: 45.014 ug/l
 RT: 8.326 min Scan# 1089
 Delta R.T. 0.000 min
 Lab File: VD072545.D
 Acq: 06 Apr 2022 12:14

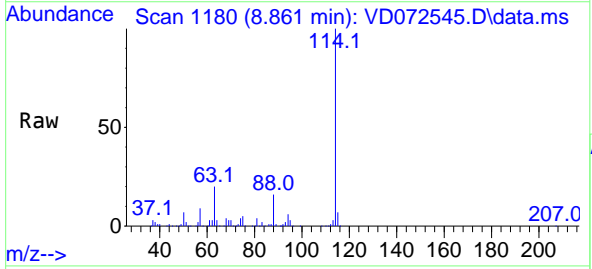
Instrument : MSVOA_D
 ClientSampleId : VD0406SBL01



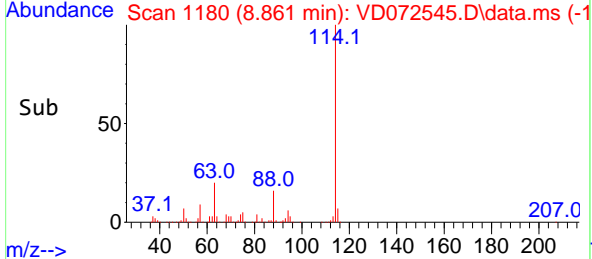
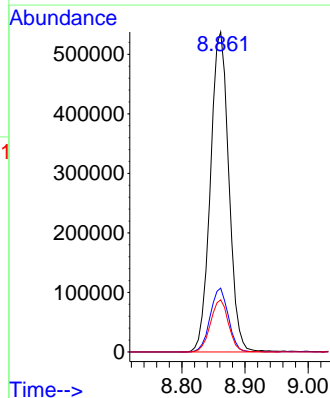
Tgt Ion: 65 Resp: 329046
 Ion Ratio Lower Upper
 65 100
 67 52.4 0.0 101.4

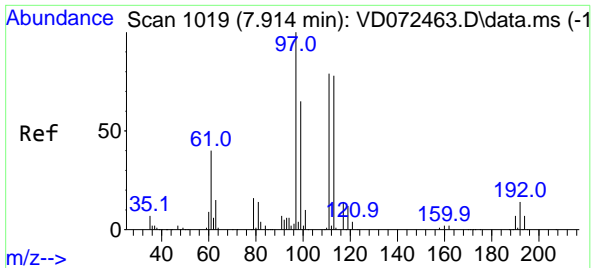


#34
 1,4-Difluorobenzene
 Concen: 50.000 ug/l
 RT: 8.861 min Scan# 1180
 Delta R.T. 0.000 min
 Lab File: VD072545.D
 Acq: 06 Apr 2022 12:14



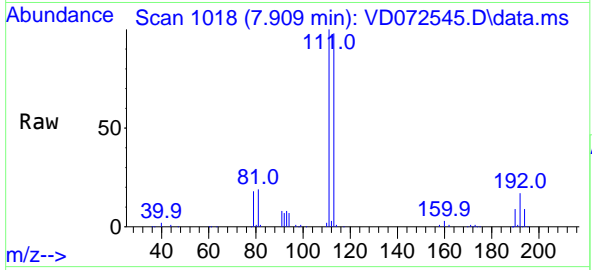
Tgt Ion: 114 Resp: 1087370
 Ion Ratio Lower Upper
 114 100
 63 20.0 0.0 46.6
 88 16.3 0.0 33.2



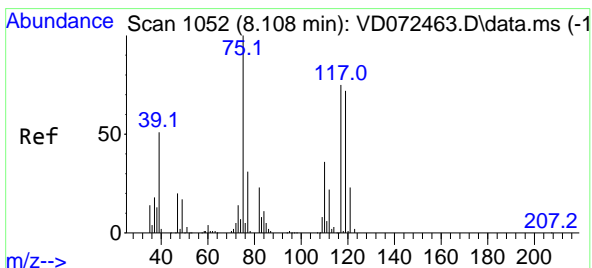
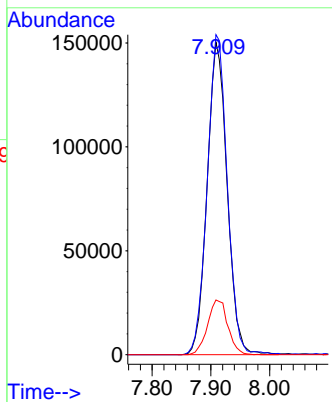
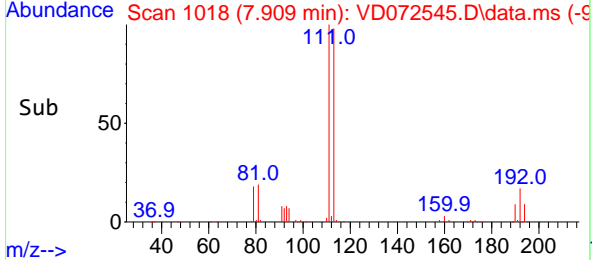


#35
 Dibromofluoromethane
 Concen: 42.003 ug/l
 RT: 7.909 min Scan# 1018
 Delta R.T. -0.006 min
 Lab File: VD072545.D
 Acq: 06 Apr 2022 12:14

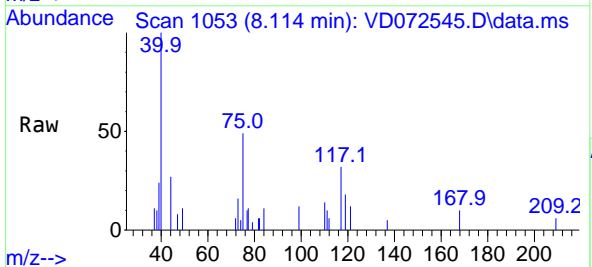
Instrument : MSVOA_D
 ClientSampleId : VD0406SBL01



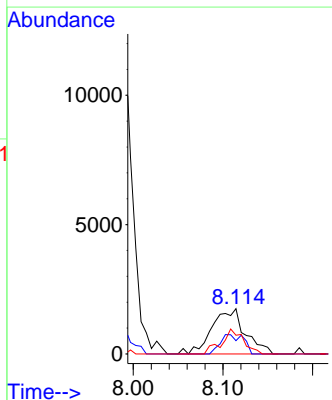
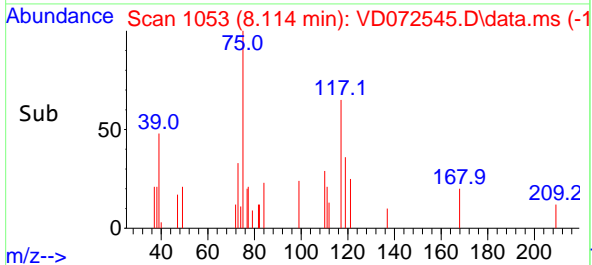
Tgt Ion:113 Resp: 354943
 Ion Ratio Lower Upper
 113 100
 111 102.7 83.8 125.6
 192 17.7 14.6 21.8

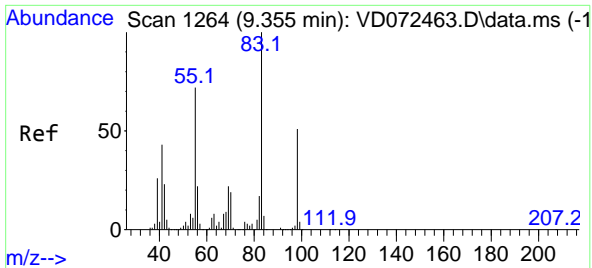


#36
 1,1-Dichloropropene
 Concen: 1.531 ug/l
 RT: 8.114 min Scan# 1053
 Delta R.T. 0.006 min
 Lab File: VD072545.D
 Acq: 06 Apr 2022 12:14



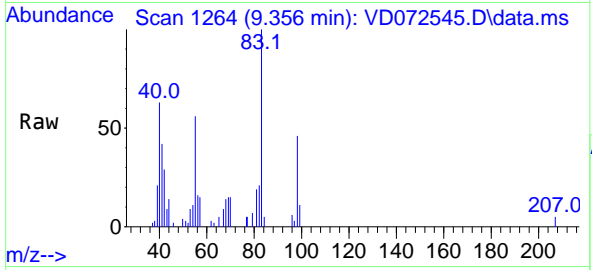
Tgt Ion: 75 Resp: 4499
 Ion Ratio Lower Upper
 75 100
 110 30.0 16.4 49.1
 77 36.0 24.2 36.2





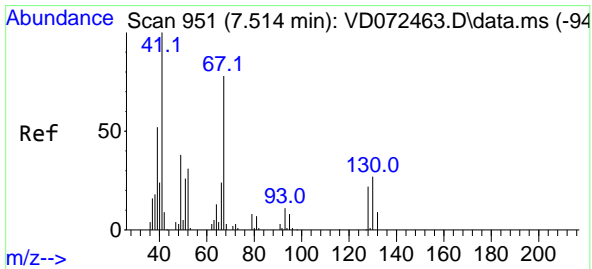
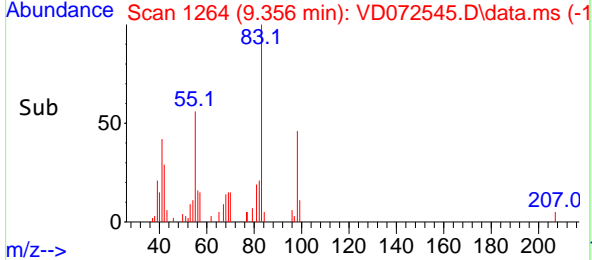
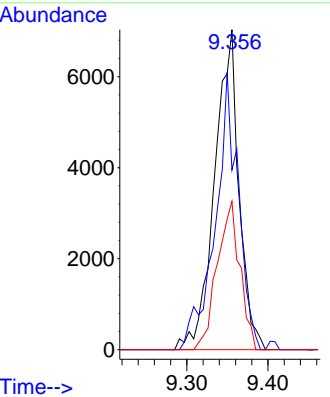
#39
 Methylcyclohexane
 Concen: 3.976 ug/l
 RT: 9.356 min Scan# 11
 Delta R.T. 0.001 min
 Lab File: VD072545.D
 Acq: 06 Apr 2022 12:14

Instrument : MSVOA_D
 ClientSampleId : VD0406SBL01



Tgt Ion: 83 Resp: 14668

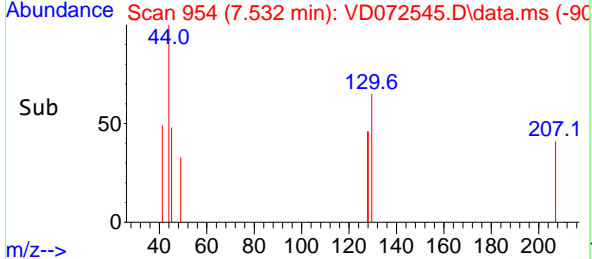
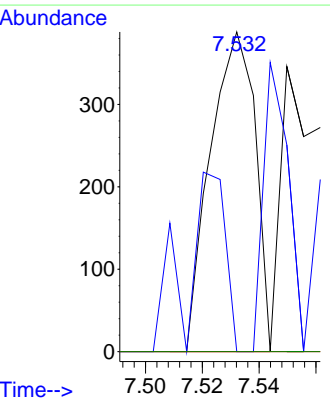
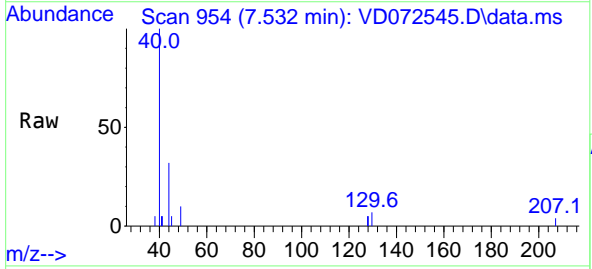
Ion	Ratio	Lower	Upper
83	100		
55	56.2	63.2	94.8#
98	46.4	38.2	57.4

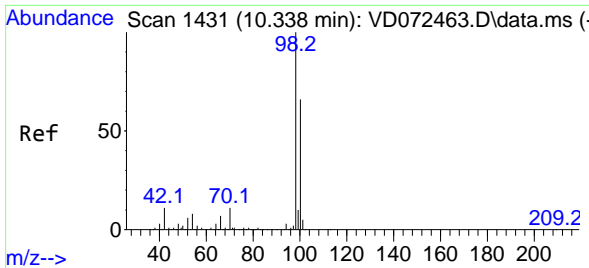


#41
 Methacrylonitrile
 Concen: 1.815 ug/l
 RT: 7.532 min Scan# 954
 Delta R.T. 0.018 min
 Lab File: VD072545.D
 Acq: 06 Apr 2022 12:14

Tgt Ion: 41 Resp: 426

Ion	Ratio	Lower	Upper
41	100		
39	48.4	44.6	67.0
67	0.0	48.2	72.4#
52	0.0	22.8	34.2#

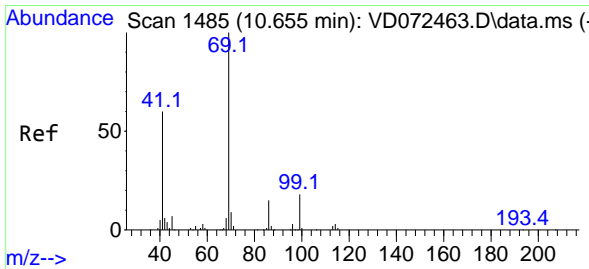
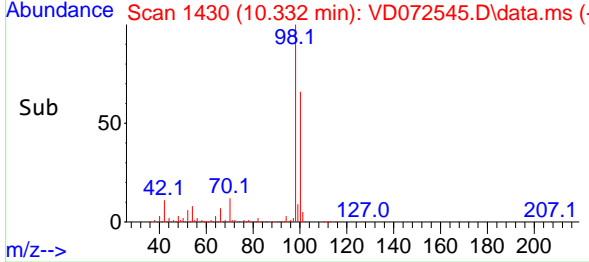
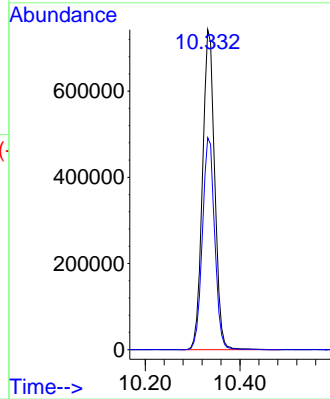
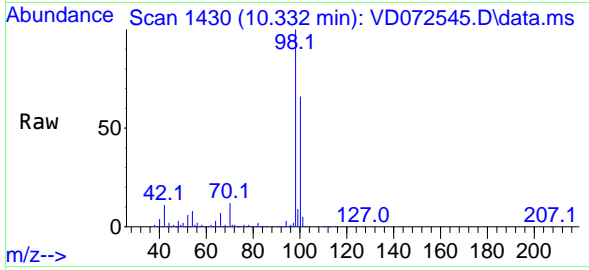




#50
 Toluene-d8
 Concen: 44.963 ug/l
 RT: 10.332 min Scan# 1430
 Delta R.T. -0.006 min
 Lab File: VD072545.D
 Acq: 06 Apr 2022 12:14

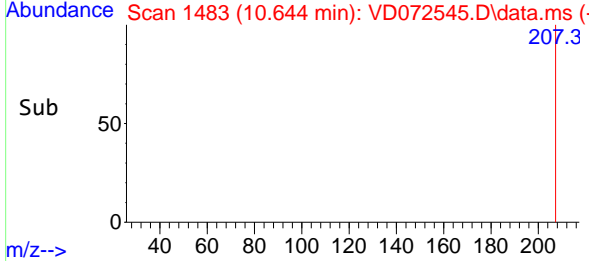
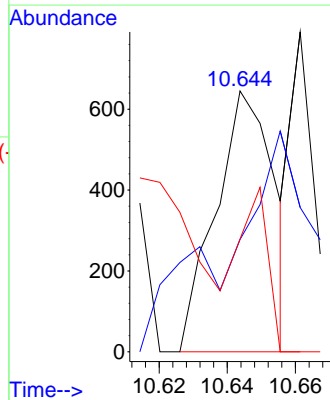
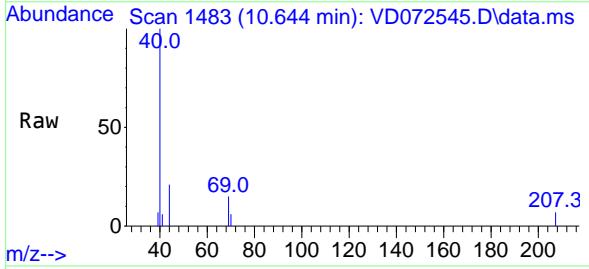
Instrument : MSVOA_D
 ClientSampleId : VD0406SBL01

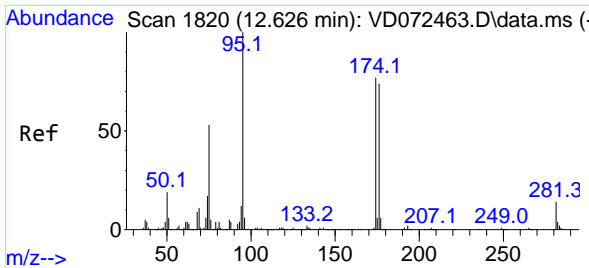
Tgt Ion: 98 Resp: 1320760
 Ion Ratio Lower Upper
 98 100
 100 66.7 52.4 78.6



#56
 Ethyl methacrylate
 Concen: 1.285 ug/l
 RT: 10.644 min Scan# 1483
 Delta R.T. -0.011 min
 Lab File: VD072545.D
 Acq: 06 Apr 2022 12:14

Tgt Ion: 69 Resp: 775
 Ion Ratio Lower Upper
 69 100
 41 119.4 63.0 94.6#
 39 31.2 33.8 50.8#



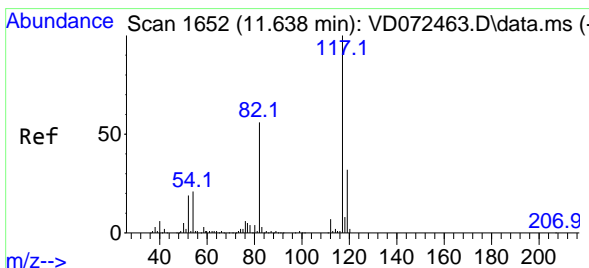
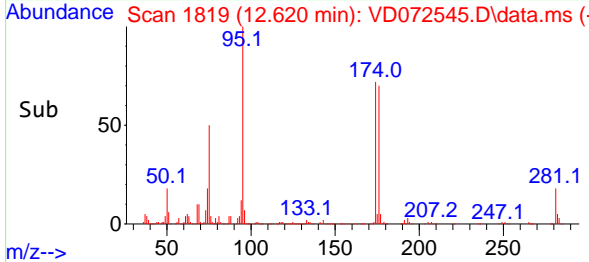
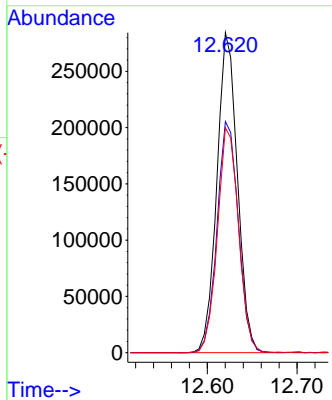
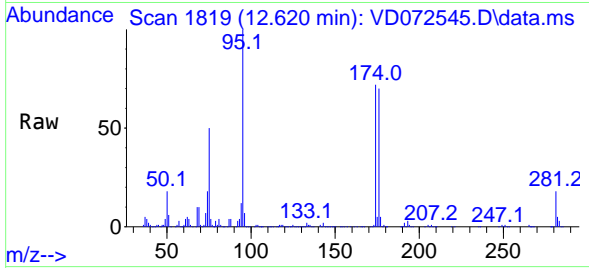


#62
 4-Bromofluorobenzene
 Concen: 39.392 ug/l
 RT: 12.620 min Scan# 1819
 Delta R.T. -0.006 min
 Lab File: VD072545.D
 Acq: 06 Apr 2022 12:14

Instrument : MSVOA_D
 ClientSampleId : VD0406SBL01

Tgt Ion: 95 Resp: 451898

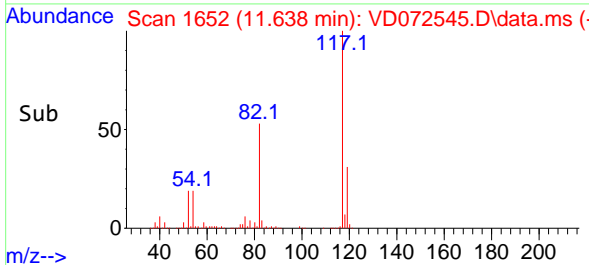
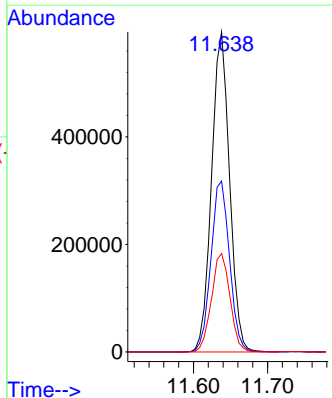
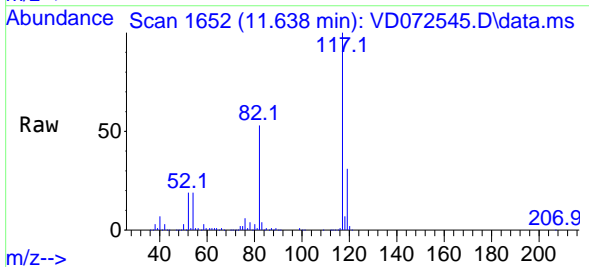
Ion	Ratio	Lower	Upper
95	100		
174	75.0	0.0	152.8
176	72.1	0.0	145.4

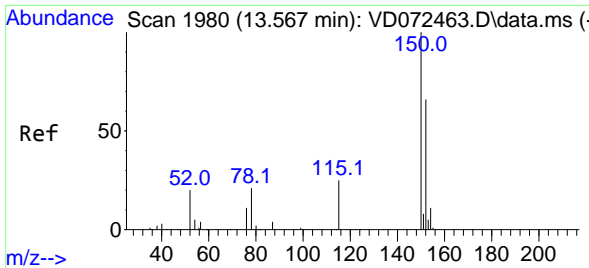


#63
 Chlorobenzene-d5
 Concen: 50.000 ug/l
 RT: 11.638 min Scan# 1652
 Delta R.T. 0.000 min
 Lab File: VD072545.D
 Acq: 06 Apr 2022 12:14

Tgt Ion: 117 Resp: 1004349

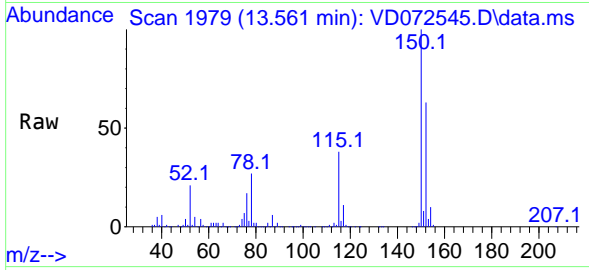
Ion	Ratio	Lower	Upper
117	100		
82	53.4	45.3	67.9
119	30.8	26.6	40.0



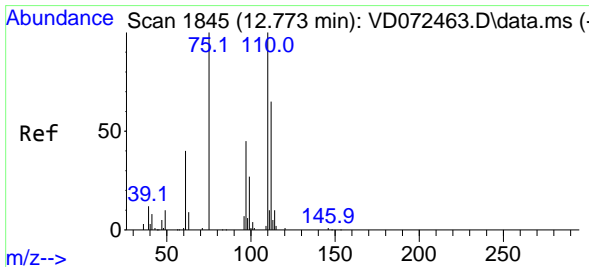
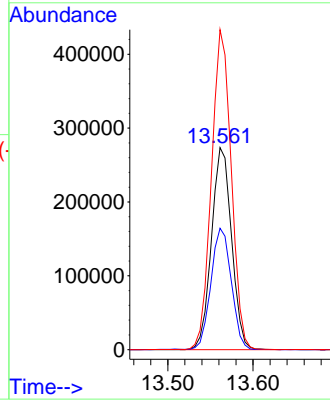
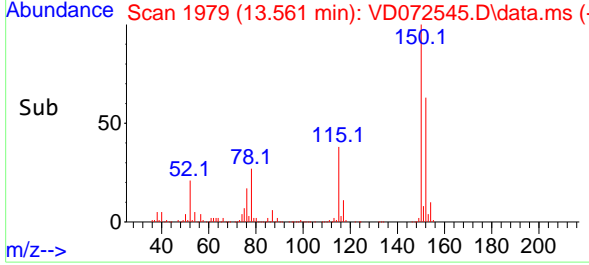


#72
 1,4-Dichlorobenzene-d4
 Concen: 50.000 ug/l
 RT: 13.561 min Scan# 1819
 Delta R.T. -0.006 min
 Lab File: VD072545.D
 Acq: 06 Apr 2022 12:14

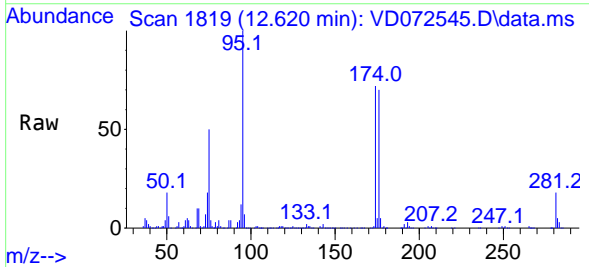
Instrument :
 MSVOA_D
 ClientSampleId :
 VD0406SBL01



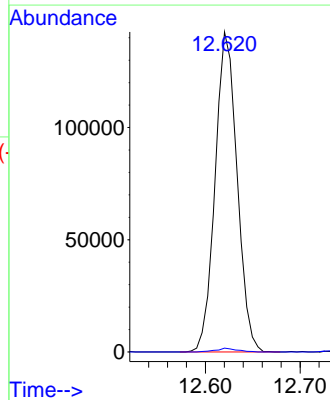
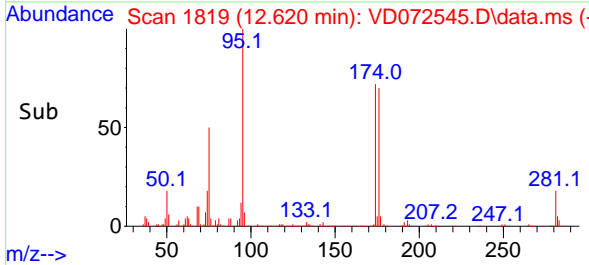
Tgt Ion:152 Resp: 449509
 Ion Ratio Lower Upper
 152 100
 115 61.0 31.3 93.8
 150 156.1 0.0 348.6

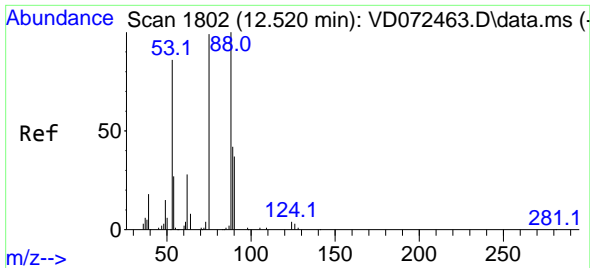


#76
 1,2,3-Trichloropropane
 Concen: 46.890 ug/l
 RT: 12.620 min Scan# 1819
 Delta R.T. -0.153 min
 Lab File: VD072545.D
 Acq: 06 Apr 2022 12:14



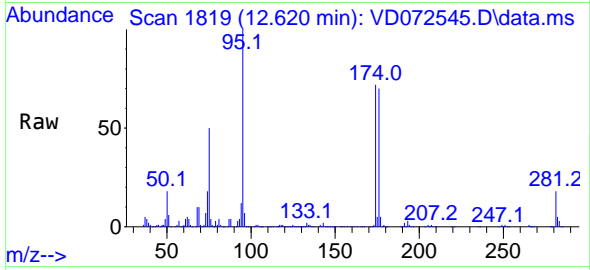
Tgt Ion: 75 Resp: 229886
 Ion Ratio Lower Upper
 75 100
 77 1.1 0.0 0.0#





#81
 trans-1,4-Dichloro-2-butene
 Concen: 115.060 ug/l
 RT: 12.620 min Scan# 11
 Delta R.T. 0.100 min
 Lab File: VD072545.D
 Acq: 06 Apr 2022 12:14

Instrument :
 MSVOA_D
 ClientSampleId :
 VD0406SBL01



Tgt Ion: 75 Resp: 229886
 Ion Ratio Lower Upper
 75 100
 53 0.1 86.5 129.7#
 89 0.3 33.9 50.9#

