

Data Path : Z:\VOASRV\HPCHEM1\MSVOA D\DATA\VD040919\
 Data File : VD061673.D
 Acq On : 9 Apr 2019 14:28
 Operator : VA/AP
 Sample : K2240-07
 Misc : 5.10µ/5ml/MSVOA D/SOIL
 ALS Vial : 5 Sample Multiplier: 1

Instrument :
 MSVOA_D
 ClientSampleId :
 SB-02-COMP

Quant Time: Apr 10 00:51:43 2019
 Quant Method : Z:\VOASRV\HPCHEM1\MSVOA_D\METHOD\82D040619S.M
 Quant Title : SW846 8260
 QLast Update : Mon Apr 08 10:04:03 2019
 Response via : Initial Calibration

Internal Standards	R.T.	QIon	Response	Conc	Units	Dev(Min)
1) Pentafluorobenzene	7.07	168	14017	50.00	µg/l	0.04
34) 1,4-Difluorobenzene	8.25	114	23131	50.00	µg/l	0.04
63) Chlorobenzene-d5	12.39	117	21813	50.00	µg/l	0.03
72) 1,4-Dichlorobenzene-d4	14.54	152	11415	50.00	µg/l	0.02

System Monitoring Compounds

33) 1,2-Dichloroethane-d4	7.48	65	8384	78.91	µg/l	0.03
Spiked Amount	50.000		Recovery	= 157.82%		
35) Dibromofluoromethane	6.95	113	9133	56.99	µg/l	0.03
Spiked Amount	50.000		Recovery	= 113.98%		
50) Toluene-d8	10.44	98	20791	51.64	µg/l	0.04
Spiked Amount	50.000		Recovery	= 103.28%		
62) 4-Bromofluorobenzene	13.57	95	10840	92.02	µg/l	0.02
Spiked Amount	50.000		Recovery	= 184.04%		

Target Compounds

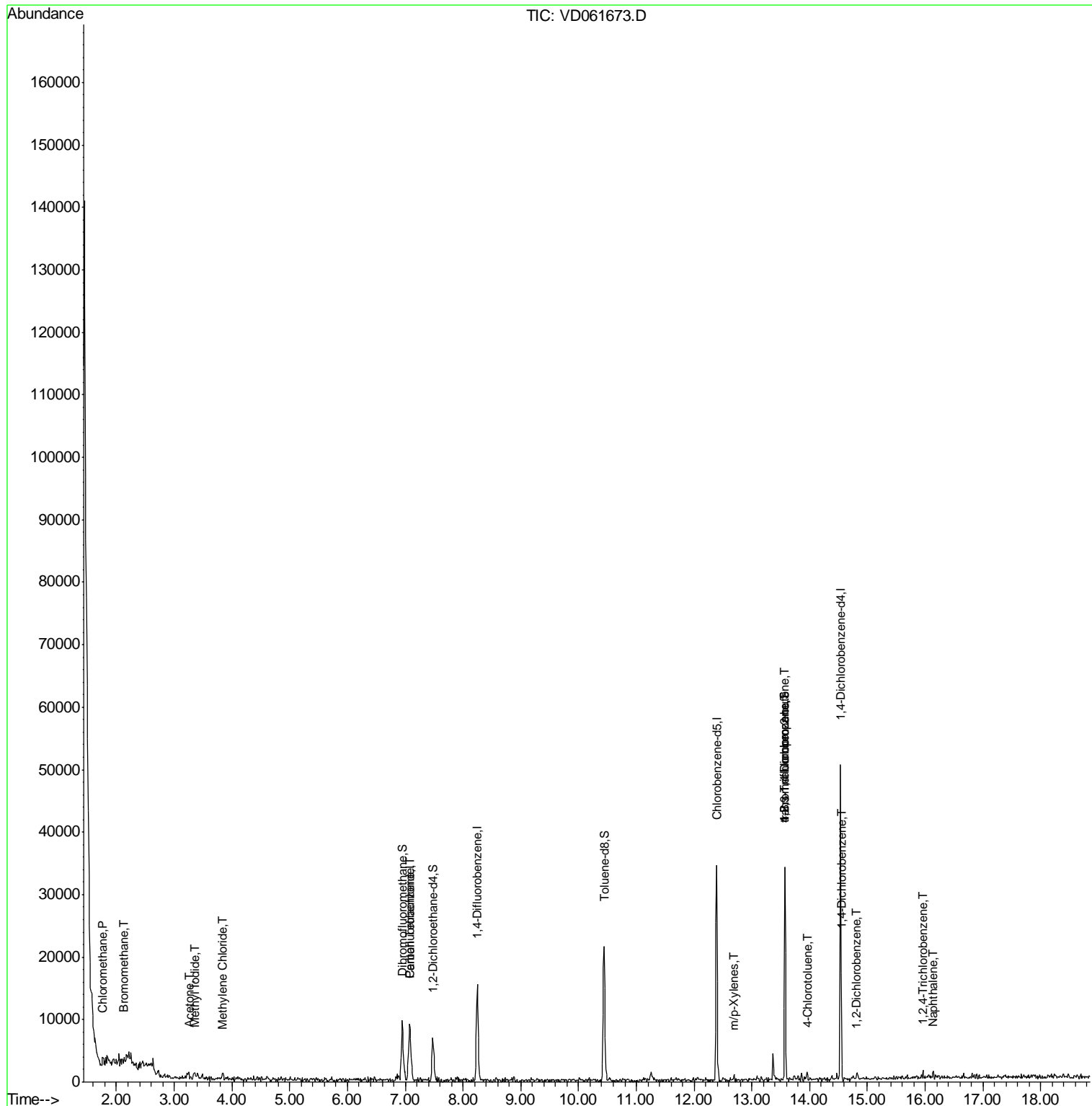
						Qvalue
3) Chloromethane	1.76	50	814	6.661	µg/l #	43
5) Bromomethane	2.13	94	205	7.756	µg/l #	12
10) Methyl Iodide	3.36	142	1515	9.210	µg/l #	38
16) Acetone	3.24	43	1702	53.588	µg/l #	51
20) Methylene Chloride	3.83	84	1088	6.037	µg/l #	8
38) Carbon Tetrachloride	7.06	117	701	2.955	µg/l #	11
68) m/p-Xylenes	12.69	106	385	1.516	µg/l #	66
76) 1,2,3-Trichloropropane	13.57	75	4488	28.899	µg/l #	43
81) trans-1,4-Dichloro-2-buten	13.57	75	4488	95.232	µg/l #	20
82) 4-Chlorotoluene	13.96	91	572	1.003	µg/l #	37
88) 1,4-Dichlorobenzene	14.56	146	755	1.969	µg/l #	53
91) 1,2-Dichlorobenzene	14.82	146	558	1.782	µg/l #	24
93) 1,2,4-Trichlorobenzene	15.96	180	517	3.241	µg/l #	76
95) Naphthalene	16.14	128	1049	4.155	µg/l #	70

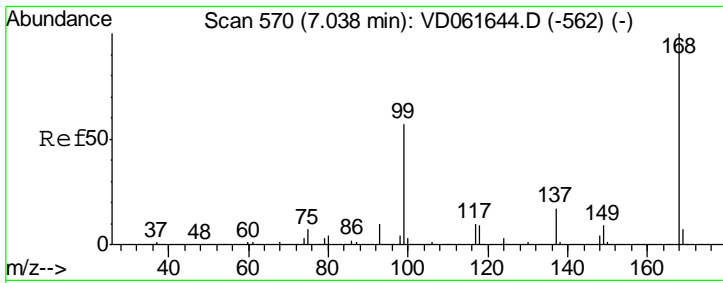
(#) = qualifier out of range (m) = manual integration (+) = signals summed

Data Path : Z:\VOASRV\HPCHEM1\MSVOA D\DATA\VD040919\
 Data File : VD061673.D
 Acq On : 9 Apr 2019 14:28
 Operator : VA/AP
 Sample : K2240-07
 Misc : 5.10α/5ml/MSVOA D/SOIL
 ALS Vial : 5 Sample Multiplier: 1

Instrument :
 MSVOA_D
 Client Sampled :
 SB-02-COMP

Quant Time: Apr 10 00:51:43 2019
 Quant Method : Z:\VOASRV\HPCHEM1\MSVOA_D\METHOD\82D040619S.M
 Quant Title : SW846 8260
 QLast Update : Mon Apr 08 10:04:03 2019
 Response via : Initial Calibration

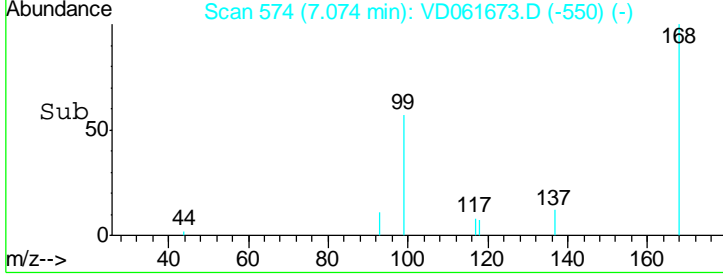
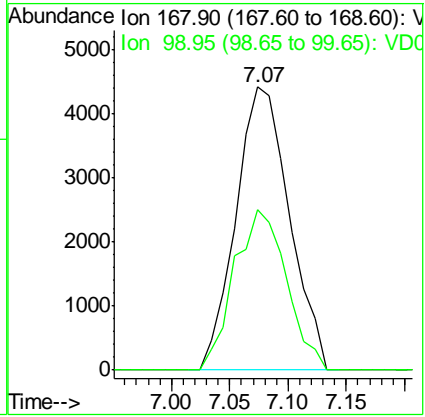
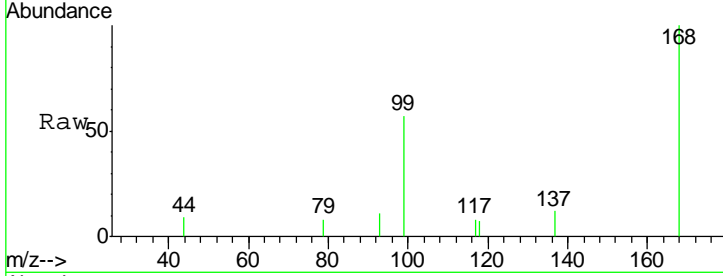




#1
 Pentafluorobenzene
 Concen: 50.000 ug/l
 RT: 7.07 min Scan# 574
 Delta R.T. 0.04 min
 Lab File: VD061673.D
 Acq: 9 Apr 2019 14:28

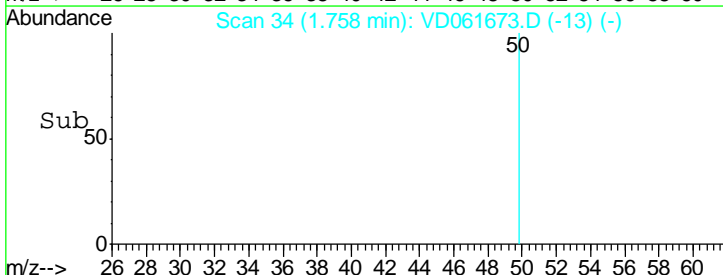
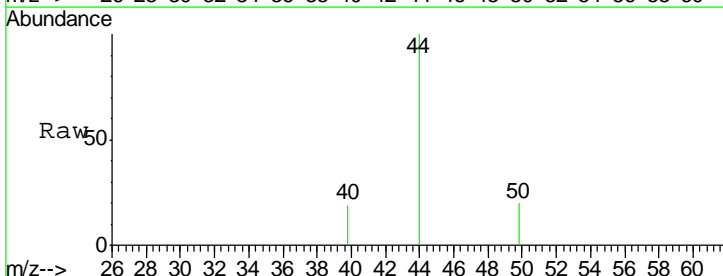
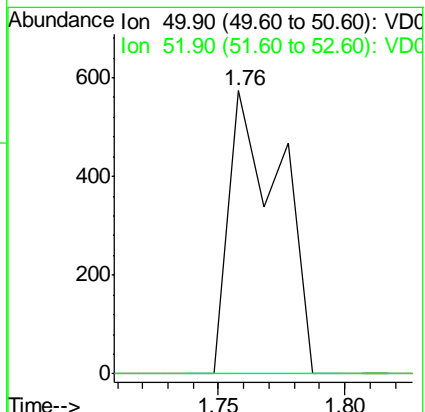
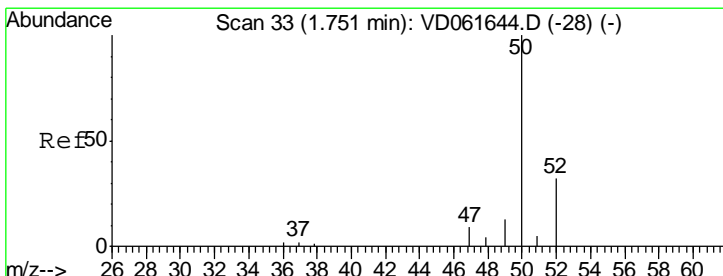
Instrument :
 MSVOA_D
ClientSampled :
 SB-02-COMP

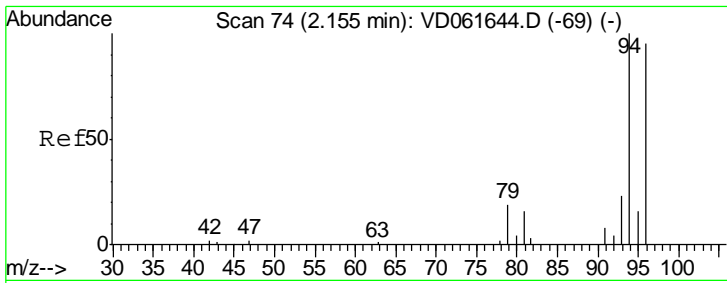
Tgt Ion	Resp	Lower	Upper
168	14017		
99	56.9	46.8	70.2



#3
 Chloromethane
 Concen: 6.661 ug/l
 RT: 1.76 min Scan# 34
 Delta R.T. 0.01 min
 Lab File: VD061673.D
 Acq: 9 Apr 2019 14:28

Tgt Ion	Resp	Lower	Upper
50	814		
52	0.0	25.1	37.7#

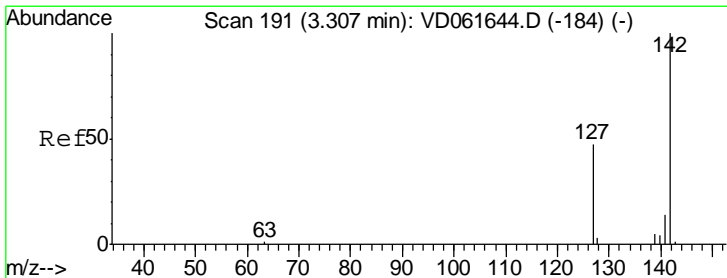
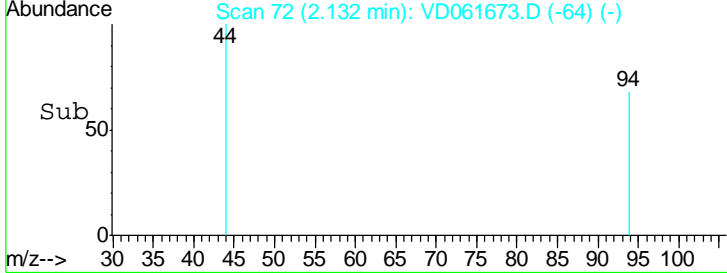
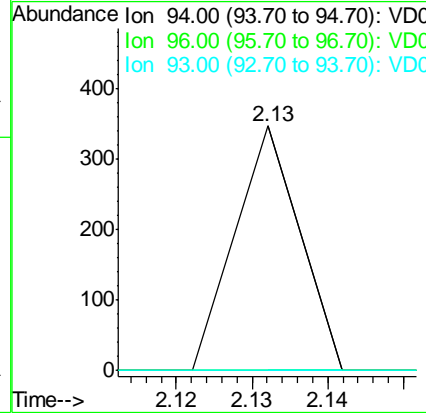
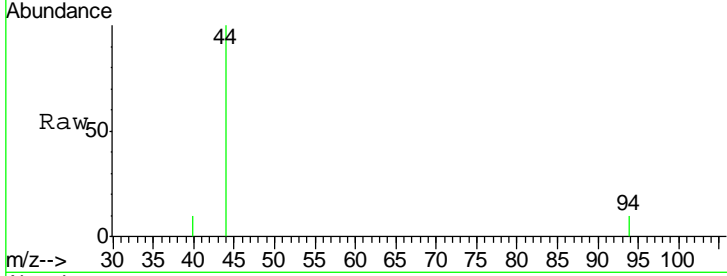




#5
 Bromomethane
 Concen: 7.756 ug/l
 RT: 2.13 min Scan# 72
 Delta R.T. -0.02 min
 Lab File: VD061673.D
 Acq: 9 Apr 2019 14:28

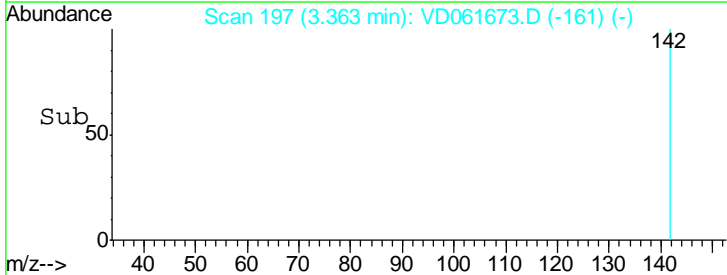
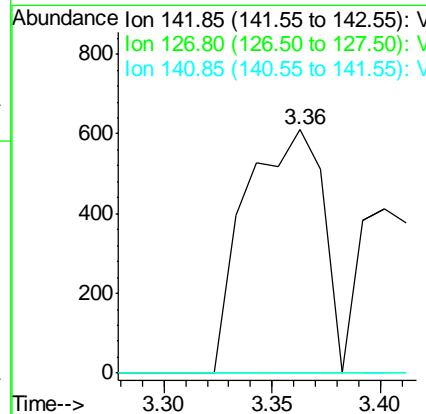
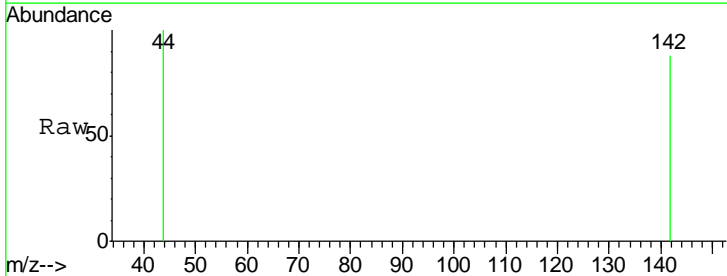
Instrument :
 MSVOA_D
 ClientSampled :
 SB-02-COMP

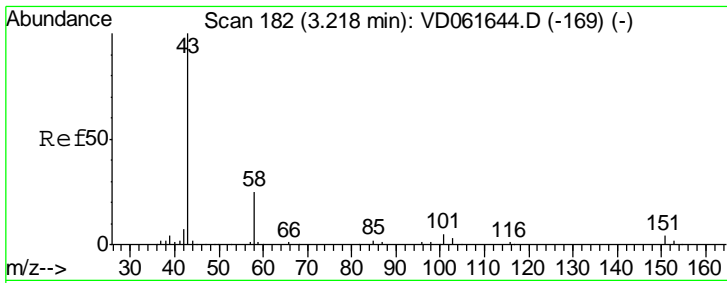
Tgt Ion	Resp	Lower	Upper
94	100		
96	0.0	75.8	113.8#
93	0.0	18.6	28.0#



#10
 Methyl Iodide
 Concen: 9.210 ug/l
 RT: 3.36 min Scan# 197
 Delta R.T. 0.06 min
 Lab File: VD061673.D
 Acq: 9 Apr 2019 14:28

Tgt Ion	Resp	Lower	Upper
142	100		
127	0.0	37.2	55.8#
141	0.0	10.8	16.2#

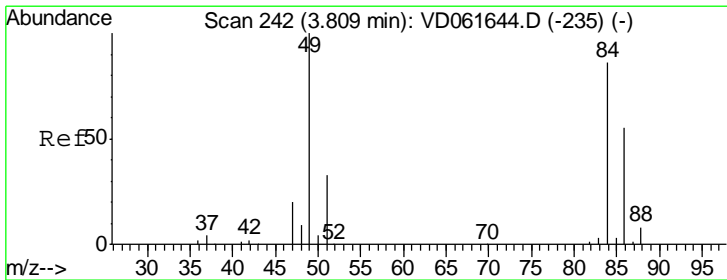
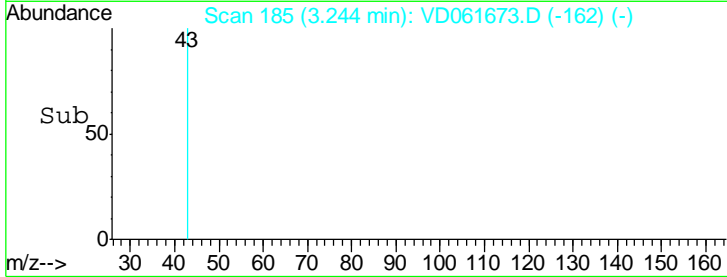
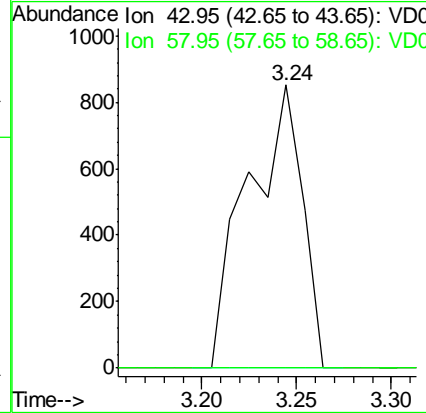
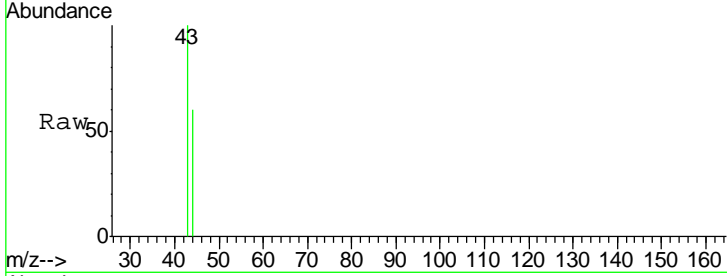




#16
 Acetone
 Concen: 53.588 ug/l
 RT: 3.24 min Scan# 185
 Delta R.T. 0.03 min
 Lab File: VD061673.D
 Acq: 9 Apr 2019 14:28

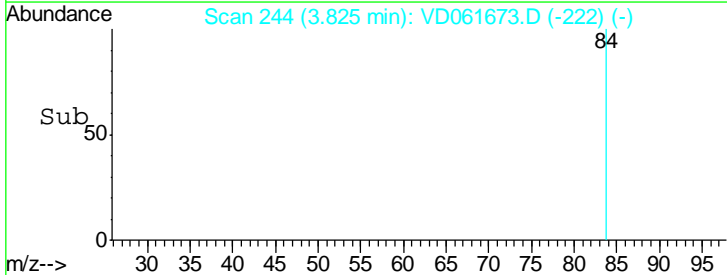
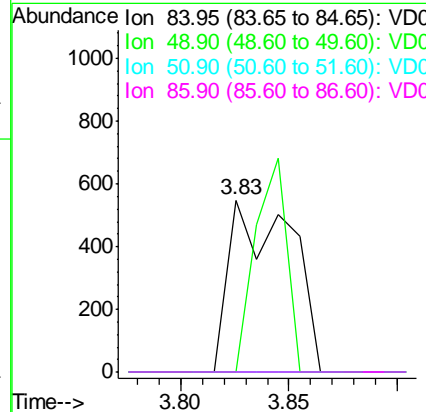
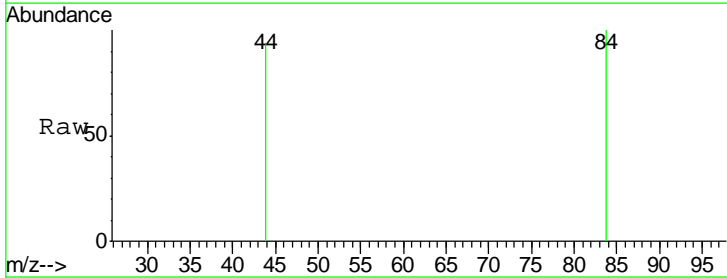
Instrument :
 MSVOA_D
 ClientSampled :
 SB-02-COMP

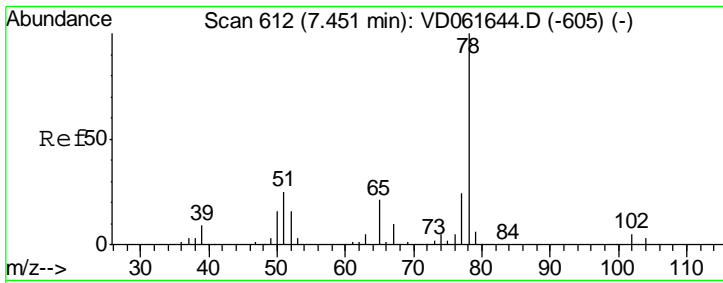
Tgt Ion	Resp	Lower	Upper
43	1702		
58	0.0	19.7	29.5#



#20
 Methylene Chloride
 Concen: 6.037 ug/l
 RT: 3.83 min Scan# 244
 Delta R.T. 0.02 min
 Lab File: VD061673.D
 Acq: 9 Apr 2019 14:28

Tgt Ion	Resp	Lower	Upper
84	1088		
49	0.0	93.0	139.4#
51	0.0	30.4	45.6#
86	0.0	51.0	76.4#

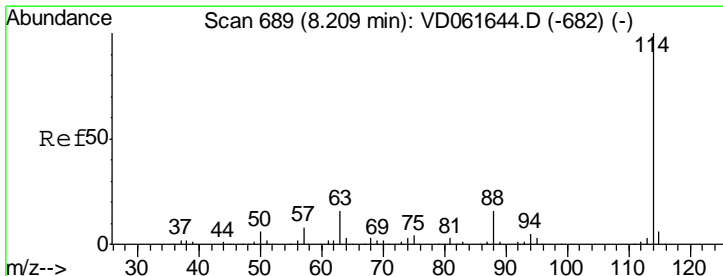
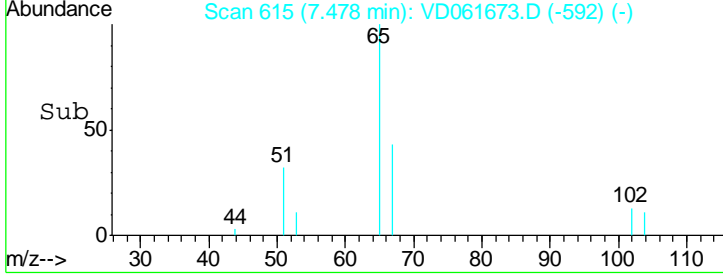
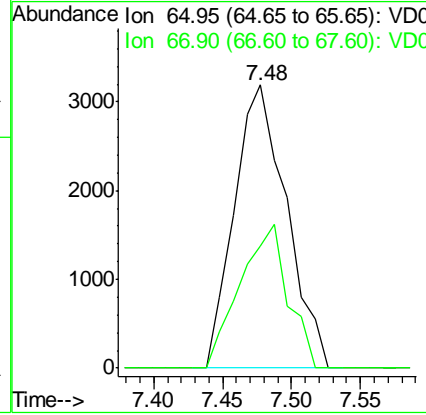
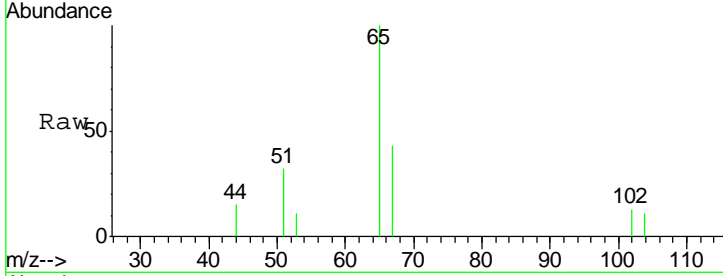




#33
 1,2-Dichloroethane-d4
 Concen: N.D. ug/l
 RT: 7.48 min Scan# 615
 Delta R.T. 0.03 min
 Lab File: VD061673.D
 Acq: 9 Apr 2019 14:28

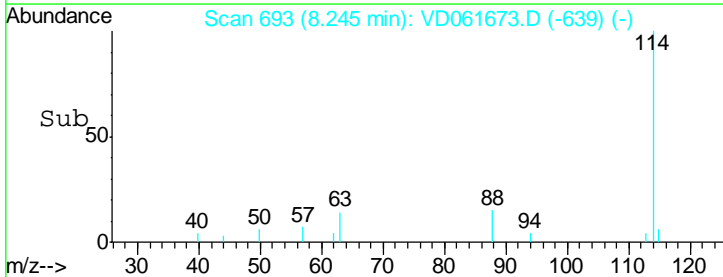
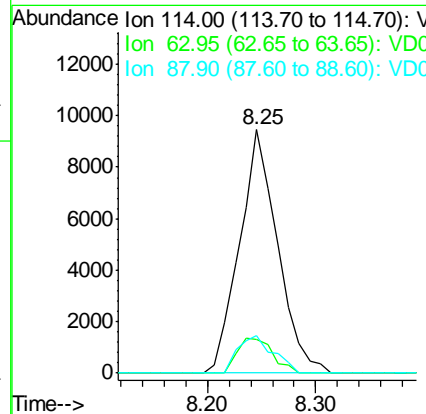
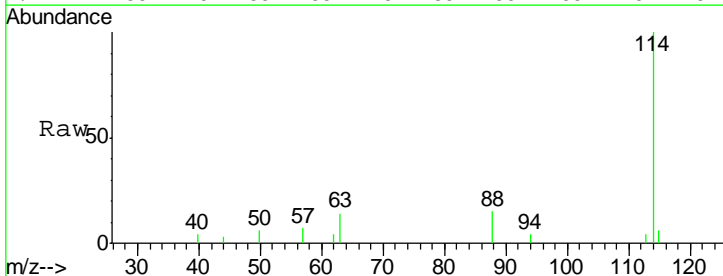
Instrument :
 MSVOA_D
ClientSampled :
 SB-02-COMP

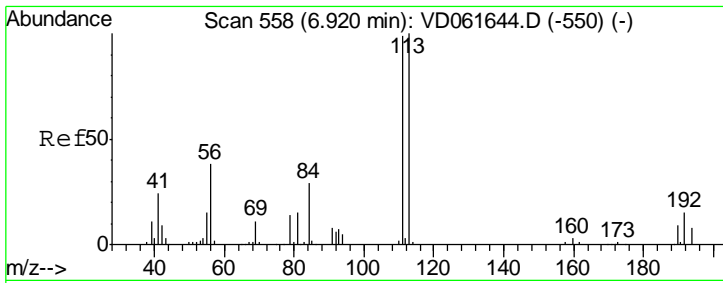
Tgt Ion	Resp	Lower	Upper
65	100		
67	43.1	0.0	99.4



#34
 1,4-Difluorobenzene
 Concen: 50.000 ug/l
 RT: 8.25 min Scan# 693
 Delta R.T. 0.04 min
 Lab File: VD061673.D
 Acq: 9 Apr 2019 14:28

Tgt Ion	Resp	Lower	Upper
114	100		
63	13.8	0.0	31.2
88	15.2	0.0	31.8

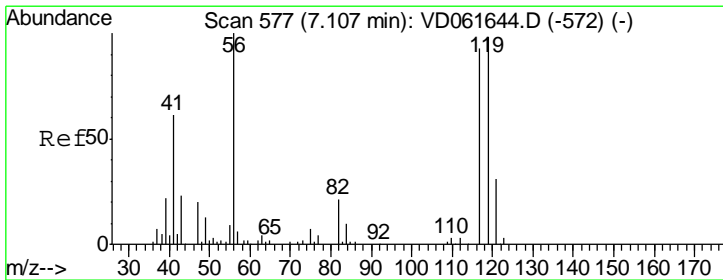
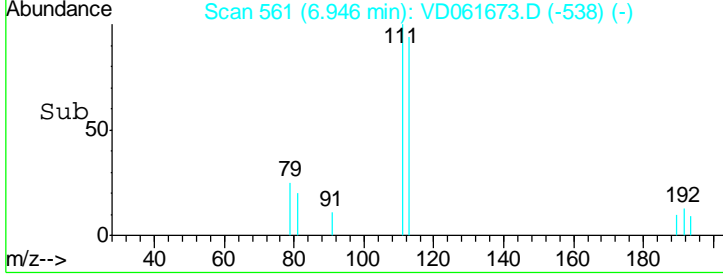
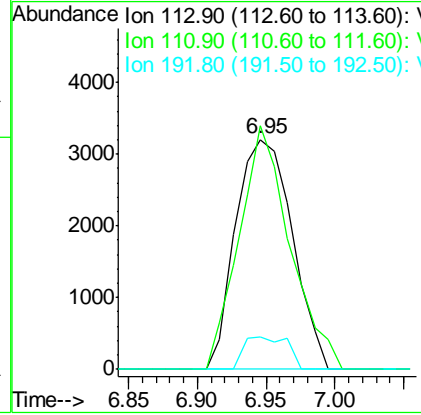
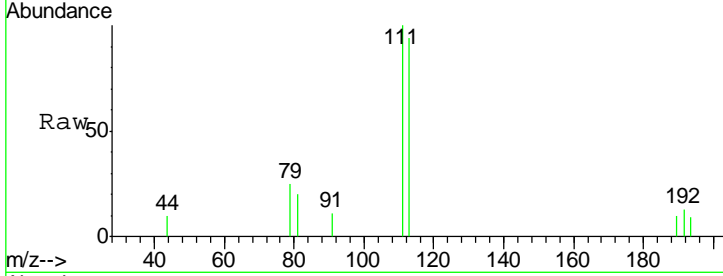




#35
 Dibromofluoromethane
 Concen: 50.000 ug/l
 RT: 6.95 min Scan# 561
 Delta R.T. 0.03 min
 Lab File: VD061673.D
 Acq: 9 Apr 2019 14:28

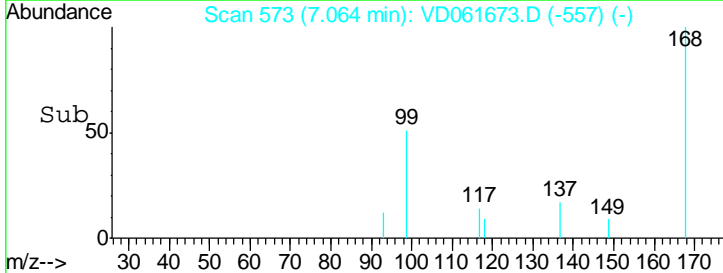
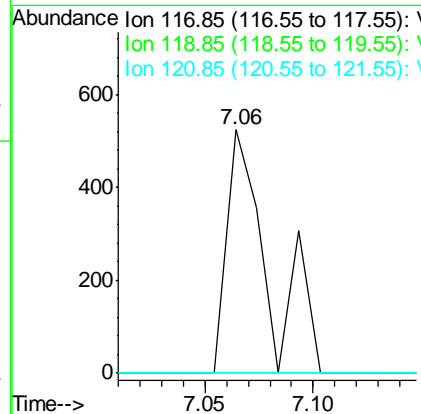
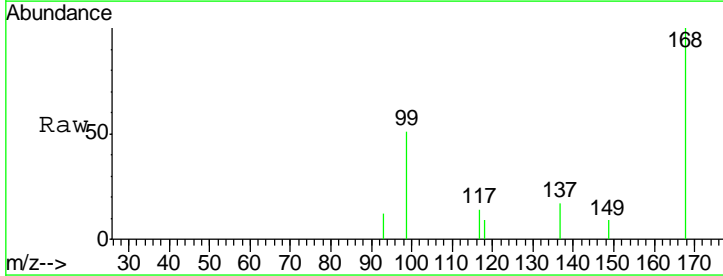
Instrument : MSVOA_D
 ClientSampleId : SB-02-COMP

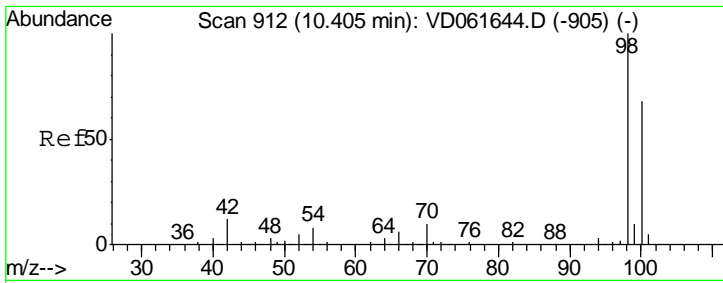
Tgt Ion	Resp	Lower	Upper
113	9133		
111	105.9	79.3	118.9
192	14.2	12.3	18.5



#38
 Carbon Tetrachloride
 Concen: 2.955 ug/l
 RT: 7.06 min Scan# 573
 Delta R.T. -0.04 min
 Lab File: VD061673.D
 Acq: 9 Apr 2019 14:28

Tgt Ion	Resp	Lower	Upper
117	701		
119	0.0	77.9	116.9#
121	0.0	24.7	37.1#

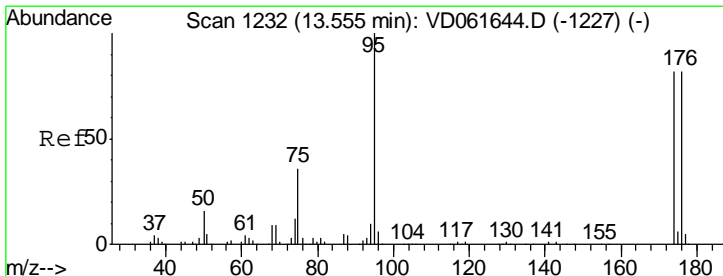
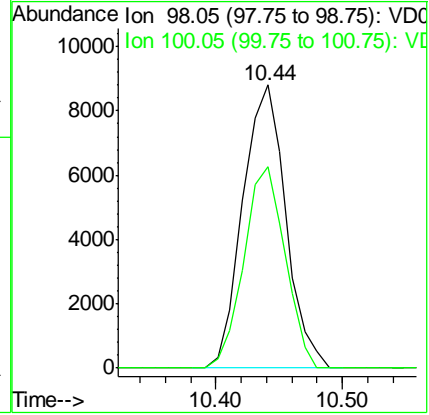
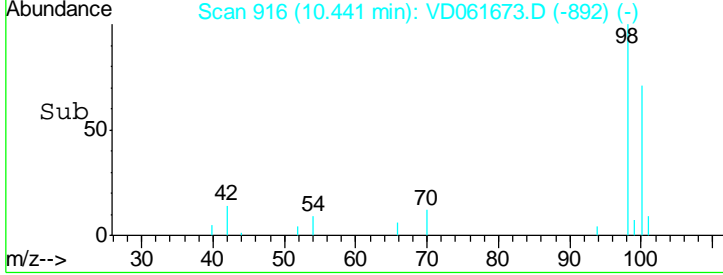
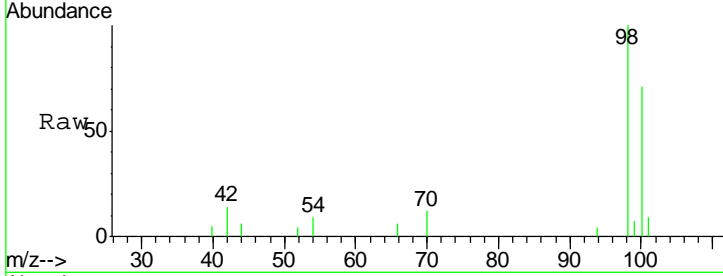




#50
 Toluene-d8
 Concen: N.D. ug/l
 RT: 10.44 min Scan# 916
 Delta R.T. 0.04 min
 Lab File: VD061673.D
 Acq: 9 Apr 2019 14:28

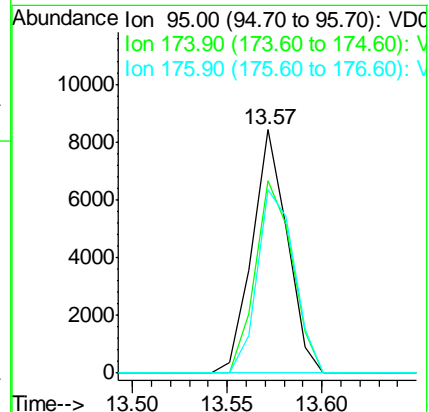
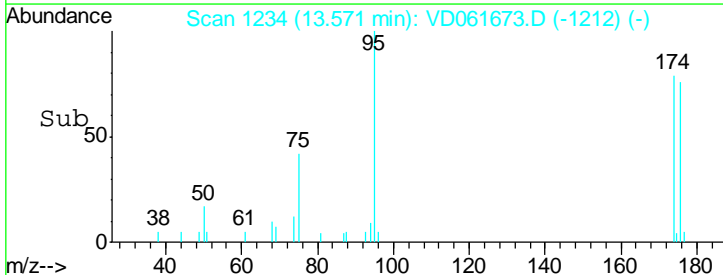
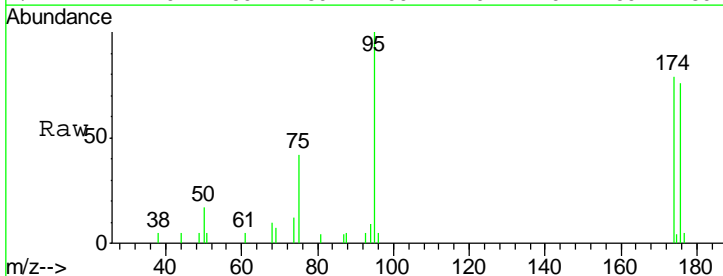
Instrument :
 MSVOA_D
 ClientSampleId :
 SB-02-COMP

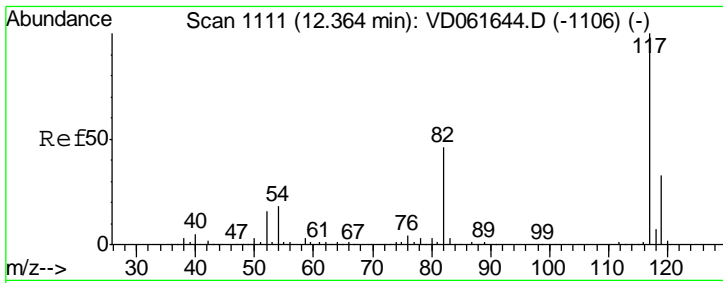
Tgt Ion: 98 Resp: 20791
 Ion Ratio Lower Upper
 98 100
 100 71.3 55.4 83.0



#62
 4-Bromofluorobenzene
 Concen: N.D. ug/l
 RT: 13.57 min Scan# 1234
 Delta R.T. 0.02 min
 Lab File: VD061673.D
 Acq: 9 Apr 2019 14:28

Tgt Ion: 95 Resp: 10840
 Ion Ratio Lower Upper
 95 100
 174 79.1 0.0 164.6
 176 75.6 0.0 165.0

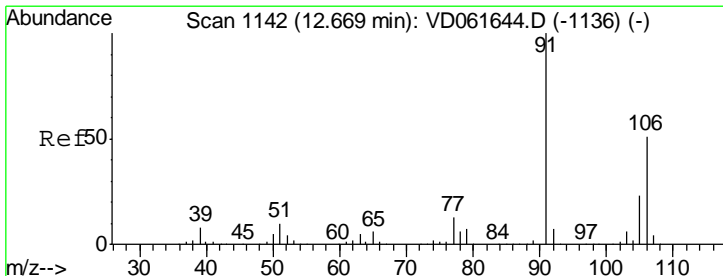
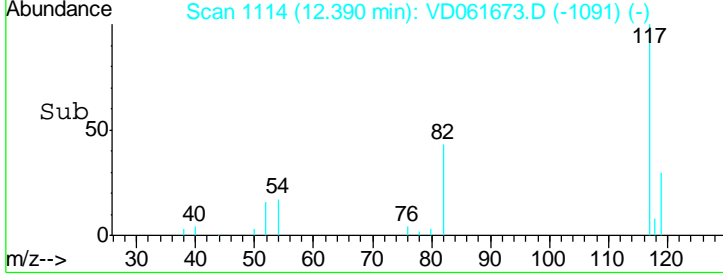
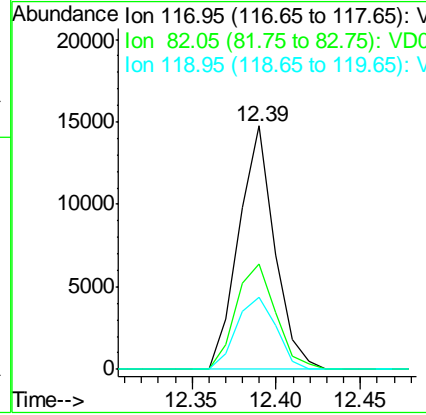
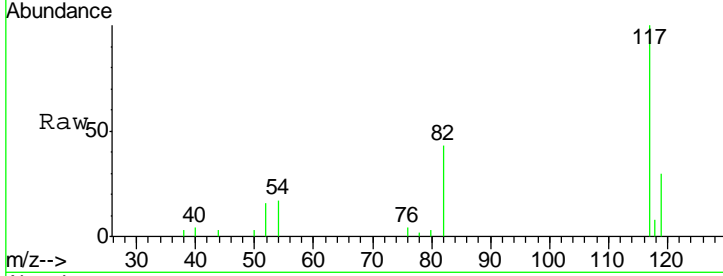




#63
 Chlorobenzene-d5
 Concen: 50.000 ug/l
 RT: 12.39 min Scan# 1114
 Delta R.T. 0.03 min
 Lab File: VD061673.D
 Acq: 9 Apr 2019 14:28

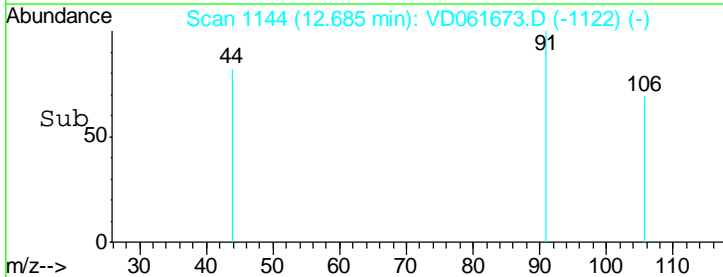
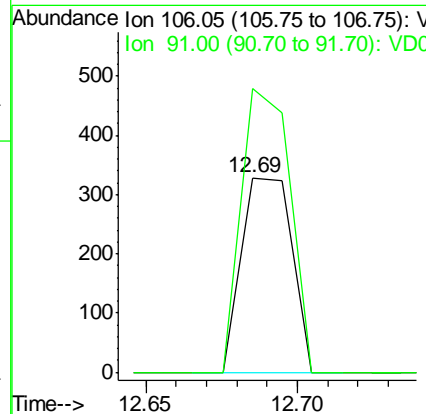
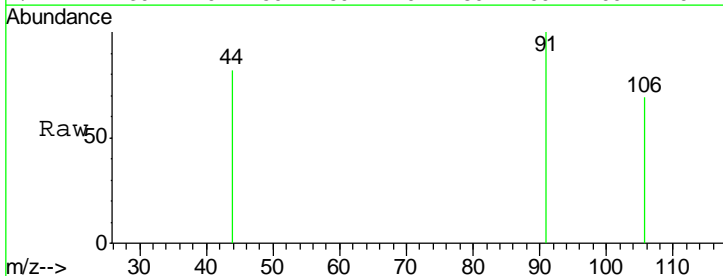
Instrument : MSVOA_D
 ClientSampled : SB-02-COMP

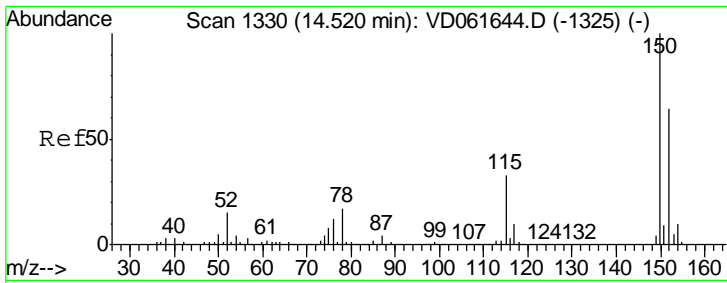
Tgt Ion	Resp	Lower	Upper
117	21813		
82	43.2	36.8	55.2
119	29.5	26.1	39.1



#68
 m/p-Xylenes
 Concen: 1.516 ug/l
 RT: 12.69 min Scan# 1144
 Delta R.T. 0.02 min
 Lab File: VD061673.D
 Acq: 9 Apr 2019 14:28

Tgt Ion	Resp	Lower	Upper
106	385		
91	145.7	156.7	235.1#

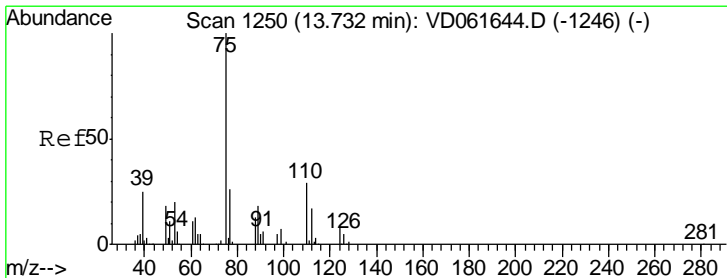
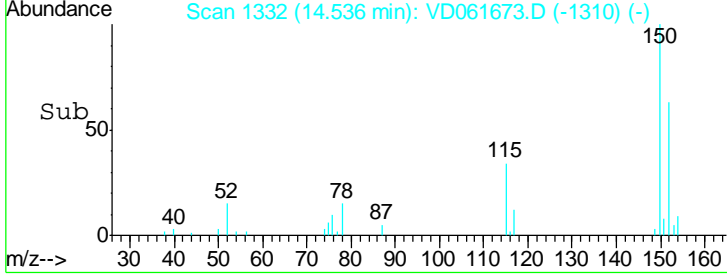
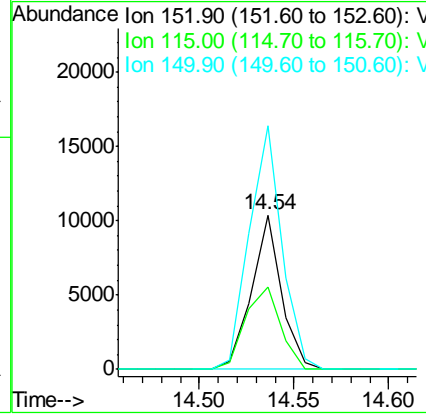
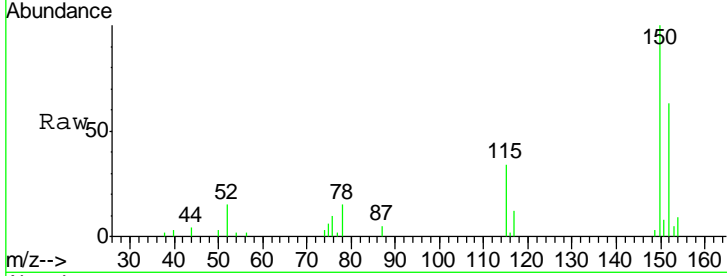




#72
 1,4-Dichlorobenzene-d4
 Concen: 50.000 ug/l
 RT: 14.54 min Scan# 1332
 Delta R.T. 0.02 min
 Lab File: VD061673.D
 Acq: 9 Apr 2019 14:28

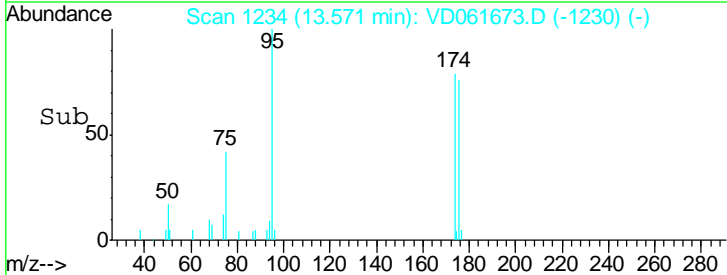
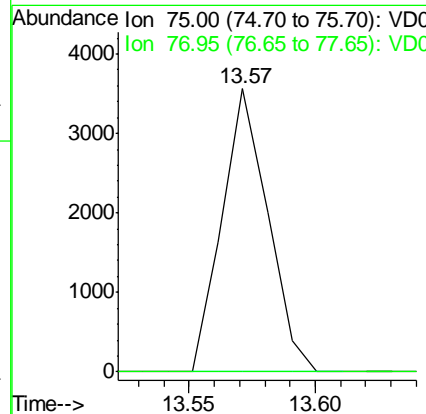
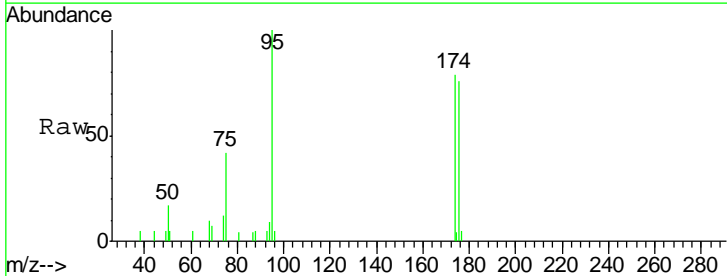
Instrument :
 MSVOA_D
 ClientSampled :
 SB-02-COMP

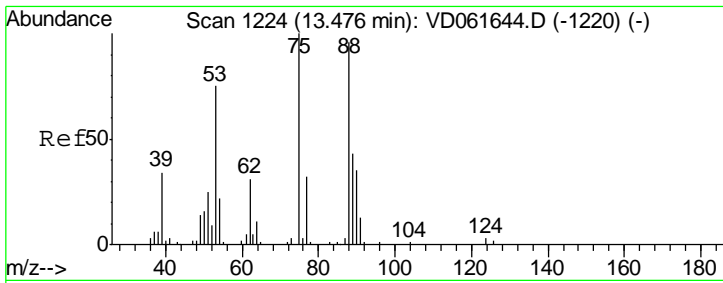
Tgt Ion	Resp	Lower	Upper
152	100		
115	53.4	26.4	79.2
150	157.9	0.0	320.6



#76
 1,2,3-Trichloropropane
 Concen: 28.899 ug/l
 RT: 13.57 min Scan# 1234
 Delta R.T. -0.16 min
 Lab File: VD061673.D
 Acq: 9 Apr 2019 14:28

Tgt Ion	Resp	Lower	Upper
75	100		
77	0.0	15.7	47.1#

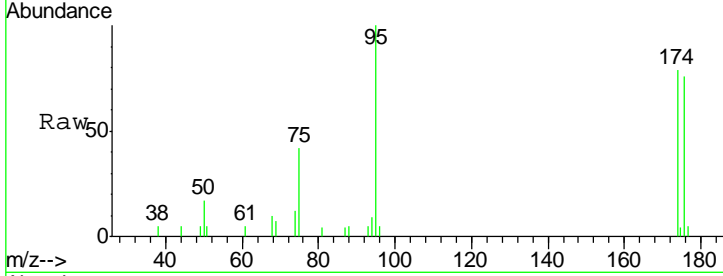




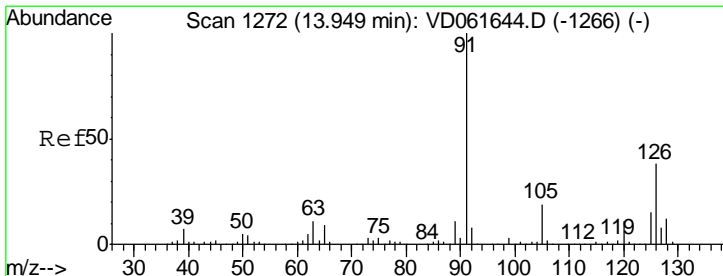
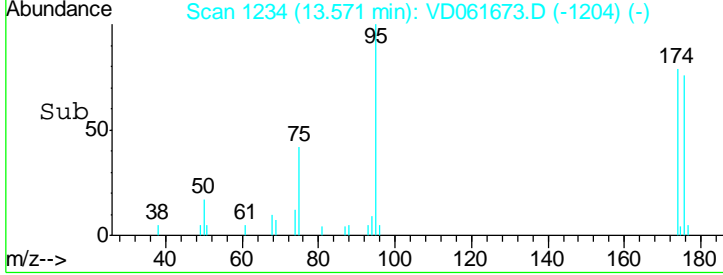
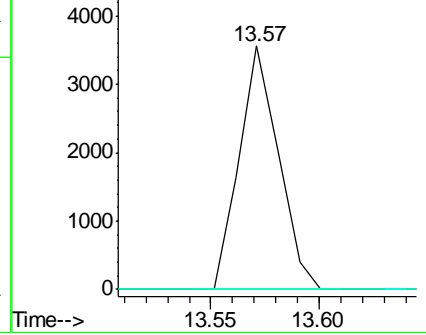
#81
 trans-1,4-Dichloro-2-butene
 Concen: 95.232 ug/l
 RT: 13.57 min Scan# 1234
 Delta R.T. 0.10 min
 Lab File: VD061673.D
 Acq: 9 Apr 2019 14:28

Instrument :
 MSVOA_D
 ClientSampleId :
 SB-02-COMP

Tgt Ion	Resp	Lower	Upper
75	100		
53	0.0	60.2	90.2#
89	0.0	34.2	51.2#

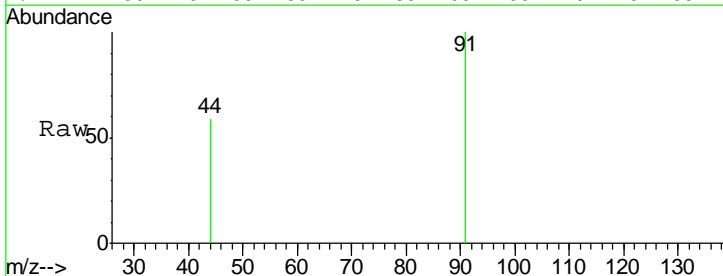


Abundance Ion 75.00 (74.70 to 75.70): VDC
 Ion 53.00 (52.70 to 53.70): VDC
 Ion 89.00 (88.70 to 89.70): VDC

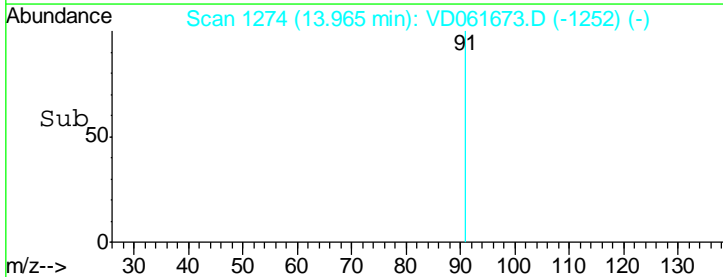
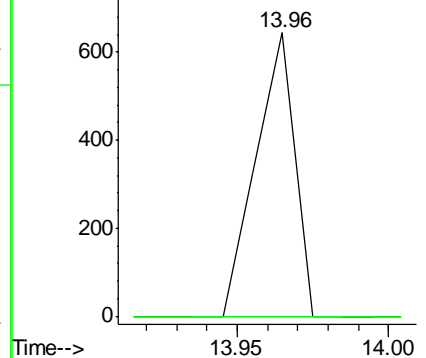


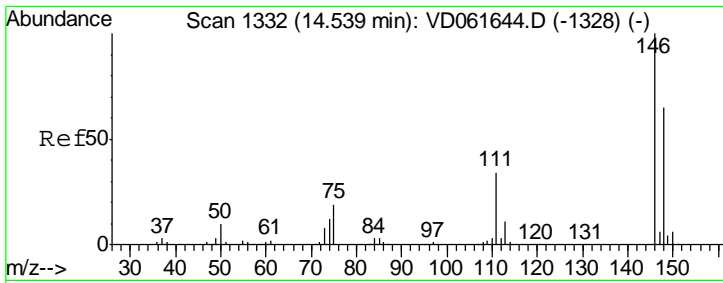
#82
 4-Chlorotoluene
 Concen: 1.003 ug/l
 RT: 13.96 min Scan# 1274
 Delta R.T. 0.02 min
 Lab File: VD061673.D
 Acq: 9 Apr 2019 14:28

Tgt Ion	Resp	Lower	Upper
91	100		
126	0.0	19.0	57.0#



Abundance Ion 91.00 (90.70 to 91.70): VDC
 Ion 125.95 (125.65 to 126.65): V

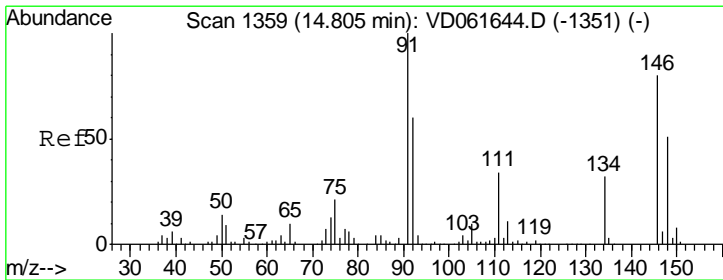
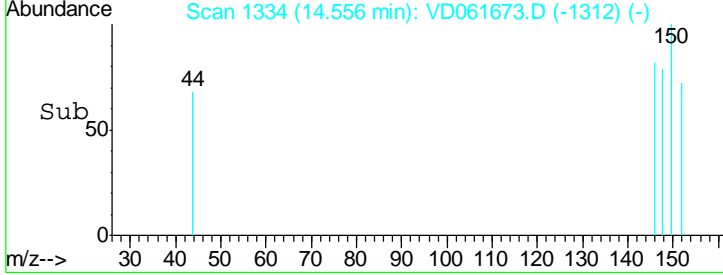
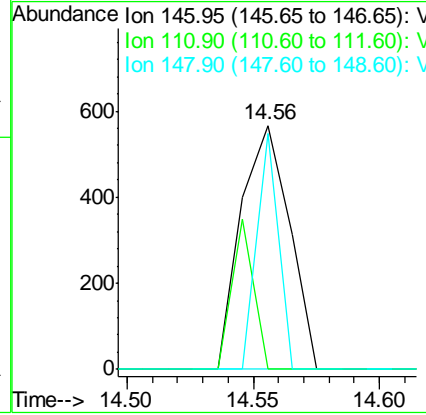
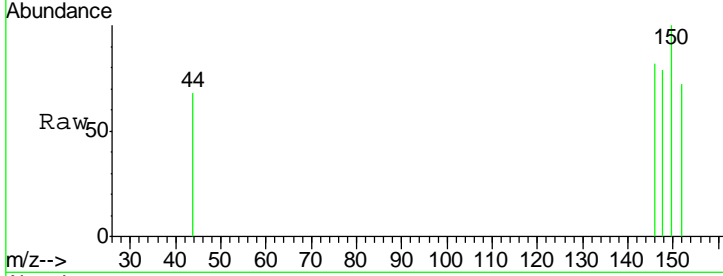




#88
 1,4-Dichlorobenzene
 Concen: 1.969 ug/l
 RT: 14.56 min Scan# 1334
 Delta R.T. 0.02 min
 Lab File: VD061673.D
 Acq: 9 Apr 2019 14:28

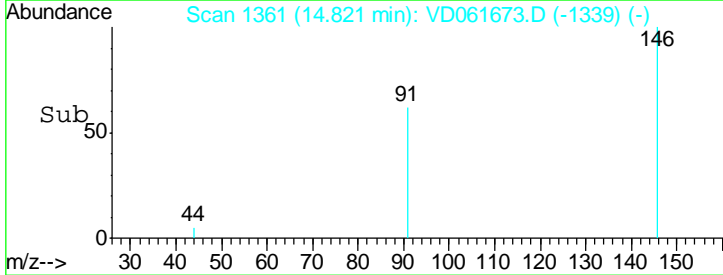
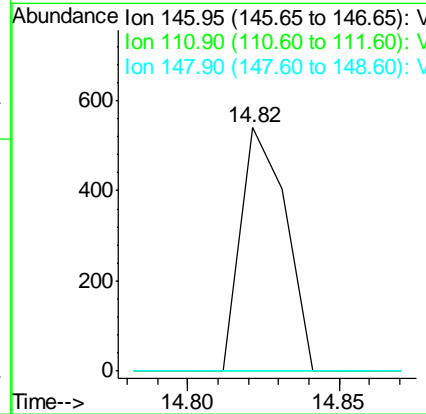
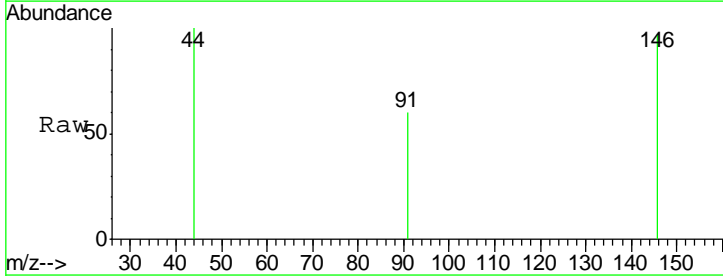
Instrument : MSVOA_D
 ClientSampled : SB-02-COMP

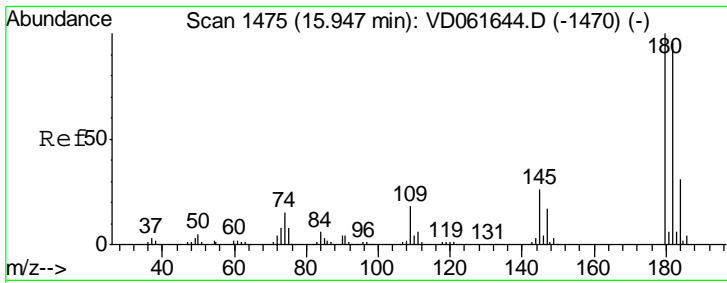
Tgt Ion	Resp	Lower	Upper
146	100		
111	0.0	17.1	51.2#
148	96.6	32.6	97.7



#91
 1,2-Dichlorobenzene
 Concen: 1.782 ug/l
 RT: 14.82 min Scan# 1361
 Delta R.T. 0.02 min
 Lab File: VD061673.D
 Acq: 9 Apr 2019 14:28

Tgt Ion	Resp	Lower	Upper
146	100		
111	0.0	21.1	63.3#
148	0.0	31.7	95.1#

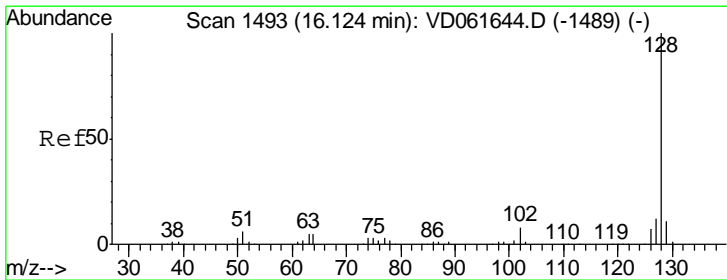
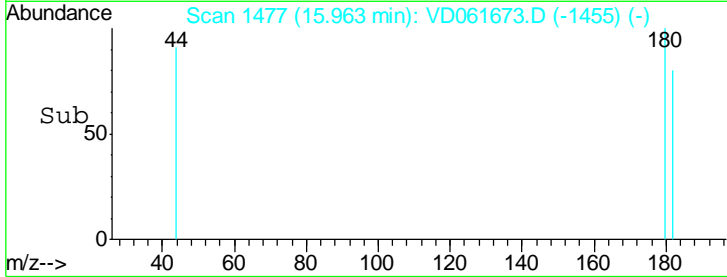
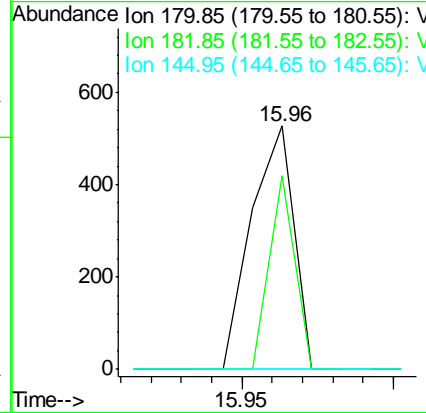
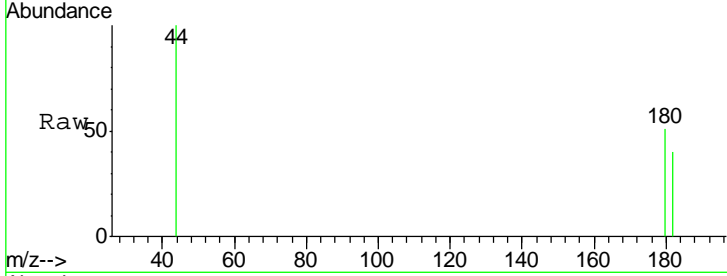




#93
 1,2,4-Trichlorobenzene
 Concen: 3.241 ug/l
 RT: 15.96 min Scan# 1477
 Delta R.T. 0.02 min
 Lab File: VD061673.D
 Acq: 9 Apr 2019 14:28

Instrument : MSVOA_D
 ClientSampled : SB-02-COMP

Tgt Ion	Resp	Lower	Upper
180	100		
182	79.5	47.8	143.3
145	0.0	13.3	39.8#



#95
 Naphthalene
 Concen: 4.155 ug/l
 RT: 16.14 min Scan# 1495
 Delta R.T. 0.02 min
 Lab File: VD061673.D
 Acq: 9 Apr 2019 14:28

Tgt Ion	Resp	Lower	Upper
128	100		
127	0.0	9.4	14.2#
129	0.0	8.8	13.2#

