

Data Path : Z:\VOASRV\HPCHEM1\MSVOA D\DATA\VD040919\  
 Data File : VD061676.D  
 Acq On : 9 Apr 2019 15:52  
 Operator : VA/AP  
 Sample : K2240-08RE  
 Misc : 5.00µ/5ml/MSVOA D/SOIL  
 ALS Vial : 8 Sample Multiplier: 1

Instrument :  
 MSVOA\_D  
 ClientSampleId :  
 SB-03-(0-6)RE

Quant Time: Apr 10 01:31:29 2019  
 Quant Method : Z:\VOASRV\HPCHEM1\MSVOA\_D\METHOD\82D040619S.M  
 Quant Title : SW846 8260  
 QLast Update : Mon Apr 08 10:04:03 2019  
 Response via : Initial Calibration

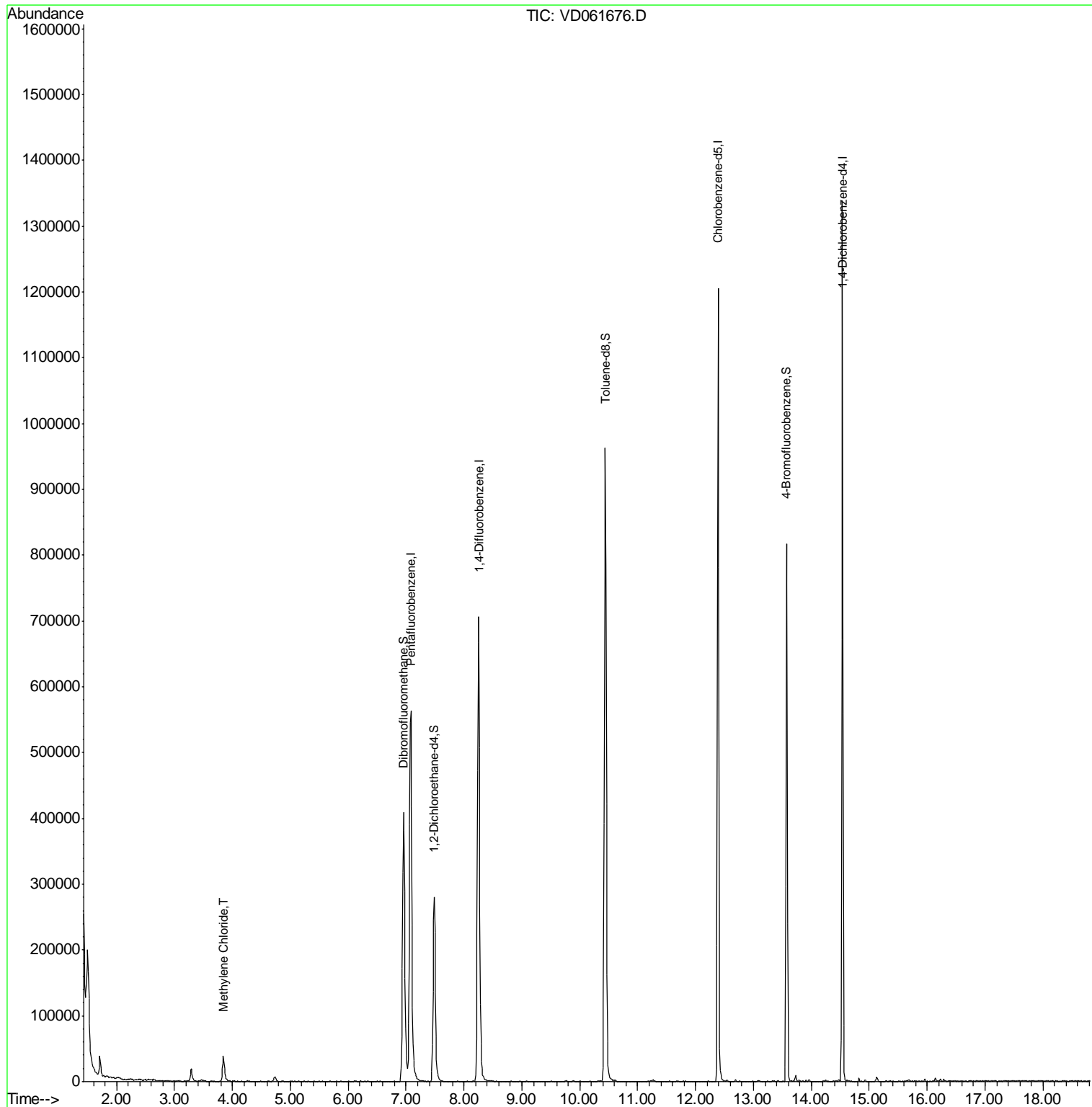
Internal Standards	R.T.	QIon	Response	Conc	Units	Dev(Min)
1) Pentafluorobenzene	7.08	168	575686	50.00	µg/l	0.04
34) 1,4-Difluorobenzene	8.25	114	912403	50.00	µg/l	0.04
63) Chlorobenzene-d5	12.39	117	735219	50.00	µg/l	0.02
72) 1,4-Dichlorobenzene-d4	14.53	152	294659	50.00	µg/l	0.01
System Monitoring Compounds						
33) 1,2-Dichloroethane-d4	7.49	65	274462	62.90	µg/l	0.03
Spiked Amount	50.000		Recovery	=	125.80%	
35) Dibromofluoromethane	6.95	113	393443	62.24	µg/l	0.03
Spiked Amount	50.000		Recovery	=	124.48%	
50) Toluene-d8	10.44	98	863917	54.40	µg/l	0.03
Spiked Amount	50.000		Recovery	=	108.80%	
62) 4-Bromofluorobenzene	13.57	95	283557	51.01	µg/l	0.02
Spiked Amount	50.000		Recovery	=	102.02%	
Target Compounds						
20) Methylene Chloride	3.84	84	28396	3.836	µg/l	90

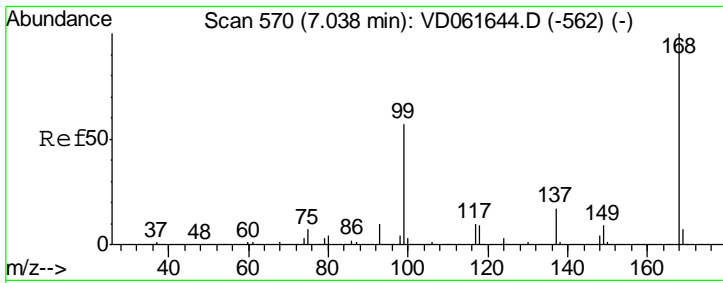
(#) = qualifier out of range (m) = manual integration (+) = signals summed

Data Path : Z:\VOASRV\HPCHEM1\MSVOA D\DATA\VD040919\  
 Data File : VD061676.D  
 Acq On : 9 Apr 2019 15:52  
 Operator : VA/AP  
 Sample : K2240-08RE  
 Misc : 5.00µl/MSVOA D/SOIL  
 ALS Vial : 8 Sample Multiplier: 1

Instrument :  
 MSVOA\_D  
 ClientSampled :  
 SB-03-(0-6)RE

Quant Time: Apr 10 01:31:29 2019  
 Quant Method : Z:\VOASRV\HPCHEM1\MSVOA\_D\METHOD\82D040619S.M  
 Quant Title : SW846 8260  
 QLast Update : Mon Apr 08 10:04:03 2019  
 Response via : Initial Calibration



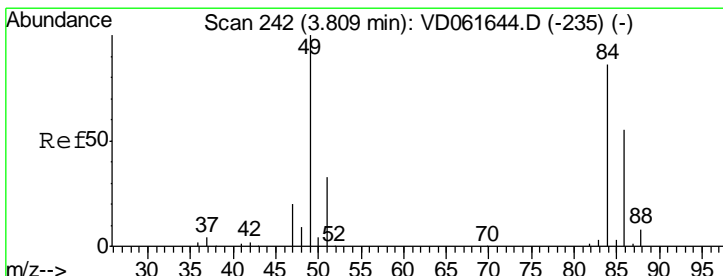
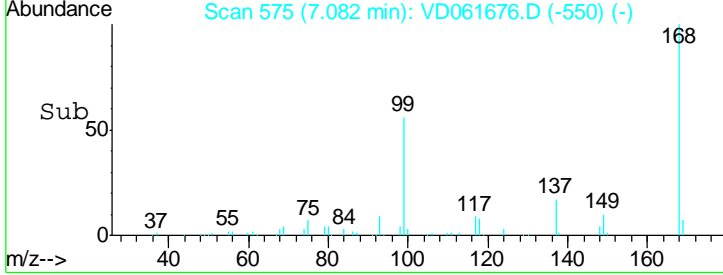
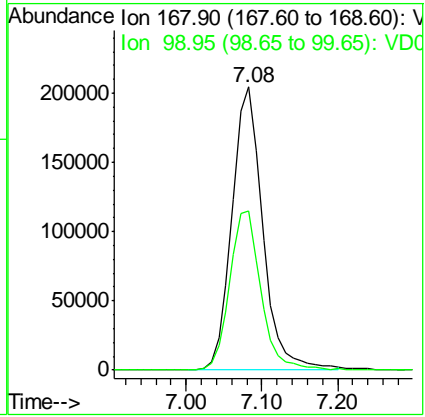
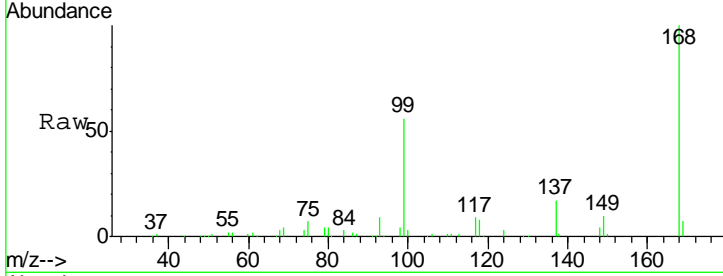


#1  
 Pentafluorobenzene  
 Concen: 50.000 ug/l  
 RT: 7.08 min Scan# 575  
 Delta R.T. 0.04 min  
 Lab File: VD061676.D  
 Acq: 9 Apr 2019 15:52

Instrument : MSVOA\_D  
 ClientSampleId : SB-03-(0-6)RE

Tot Ion: 168 Resp: 575686

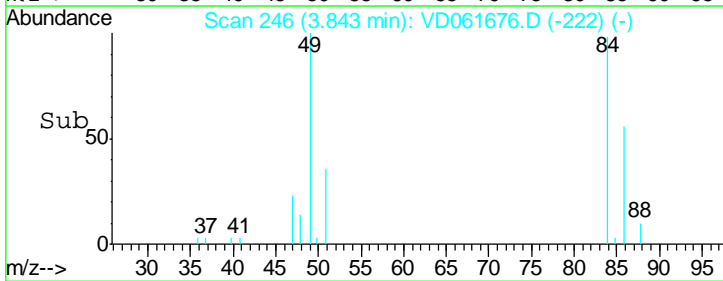
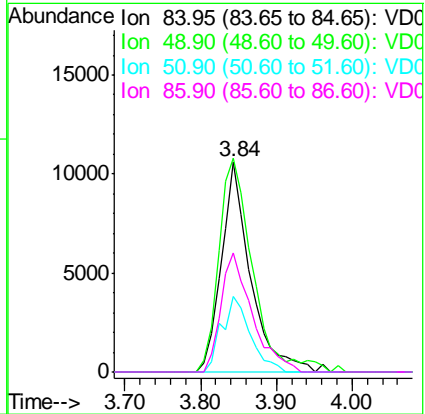
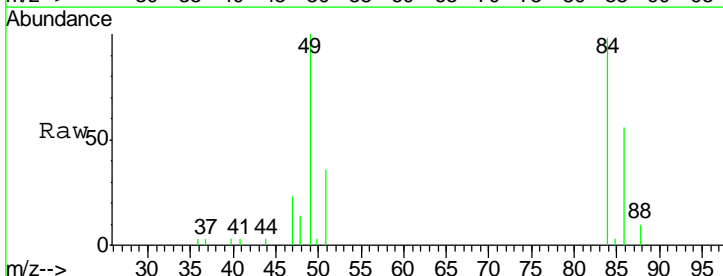
Ion	Ratio	Lower	Upper
168	100		
99	56.3	46.8	70.2

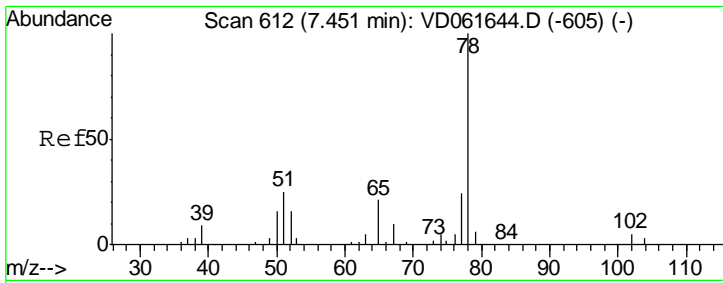


#20  
 Methylene Chloride  
 Concen: 3.836 ug/l  
 RT: 3.84 min Scan# 246  
 Delta R.T. 0.04 min  
 Lab File: VD061676.D  
 Acq: 9 Apr 2019 15:52

Tgt Ion: 84 Resp: 28396

Ion	Ratio	Lower	Upper
84	100		
49	101.7	93.0	139.4
51	36.2	30.4	45.6
86	56.7	51.0	76.4

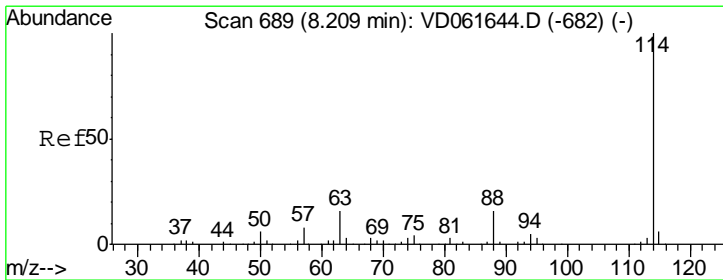
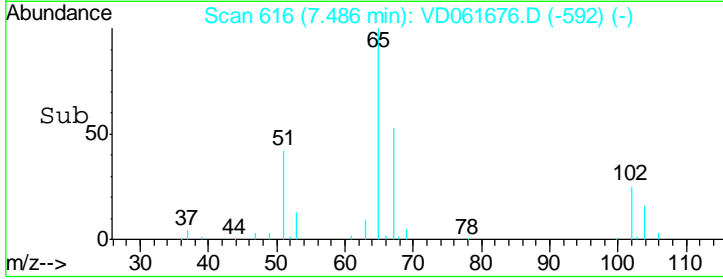
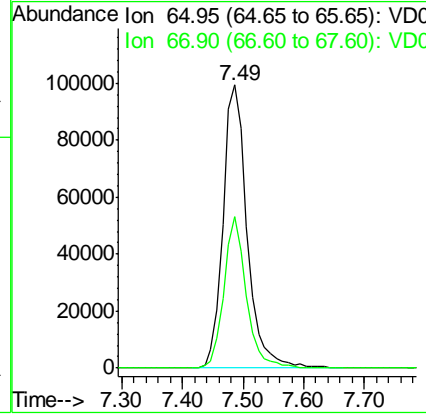
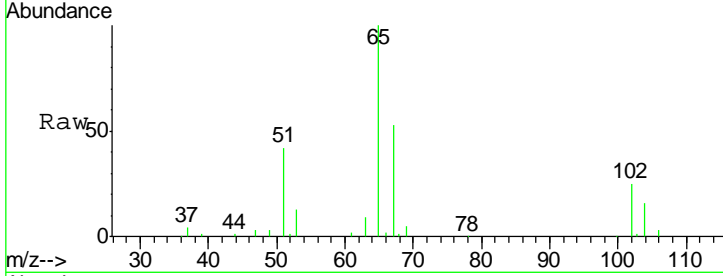




#33  
 1,2-Dichloroethane-d4  
 Concen: N.D. ug/l  
 RT: 7.49 min Scan# 616  
 Delta R.T. 0.03 min  
 Lab File: VD061676.D  
 Acq: 9 Apr 2019 15:52

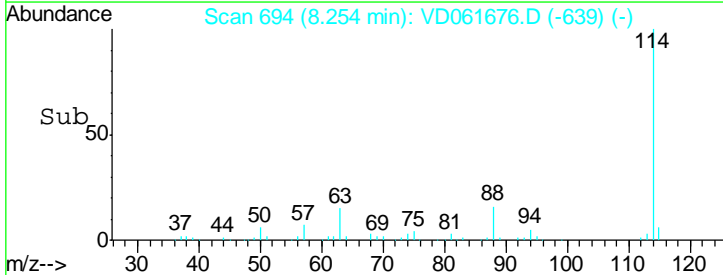
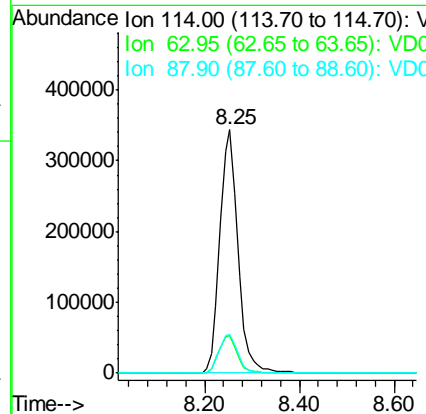
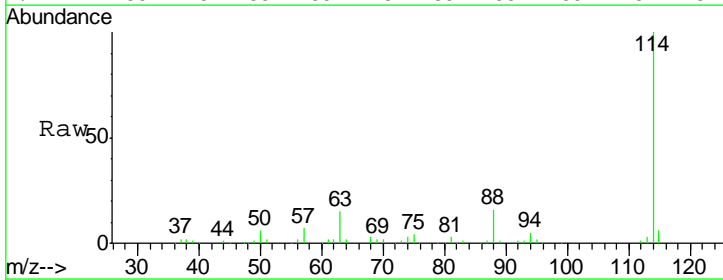
Instrument :  
 MSVOA\_D  
 ClientSampled :  
 SB-03-(0-6)RE

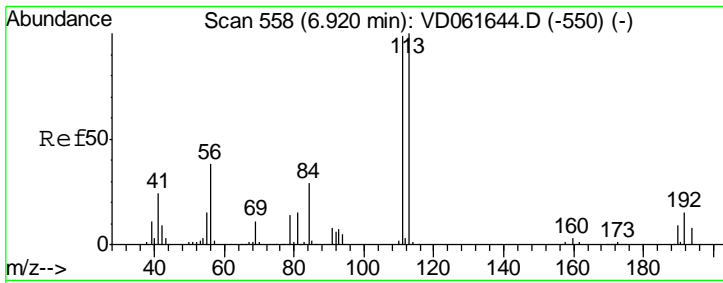
Tgt Ion	Resp	Lower	Upper
65	100		
67	53.3	0.0	99.4



#34  
 1,4-Difluorobenzene  
 Concen: 50.000 ug/l  
 RT: 8.25 min Scan# 694  
 Delta R.T. 0.04 min  
 Lab File: VD061676.D  
 Acq: 9 Apr 2019 15:52

Tgt Ion	Resp	Lower	Upper
114	100		
63	15.2	0.0	31.2
88	15.9	0.0	31.8

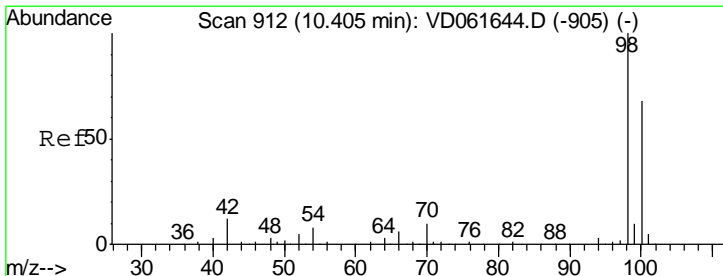
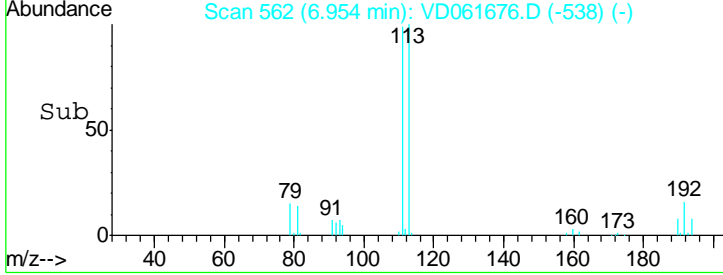
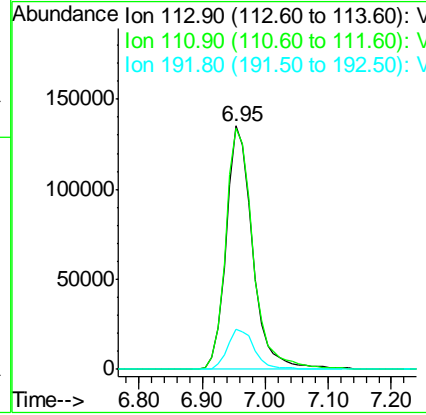
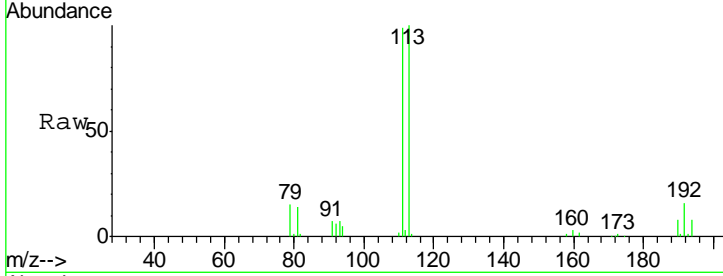




#35  
 Dibromofluoromethane  
 Concen: 50.000 ug/l  
 RT: 6.95 min Scan# 562  
 Delta R.T. 0.03 min  
 Lab File: VD061676.D  
 Acq: 9 Apr 2019 15:52

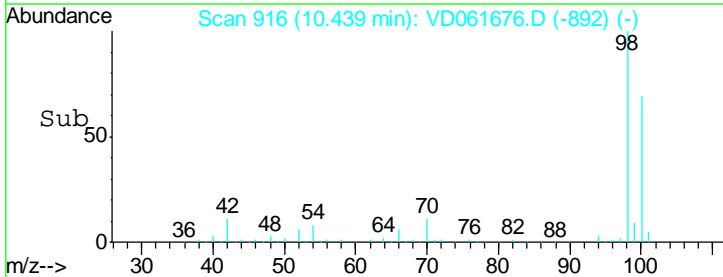
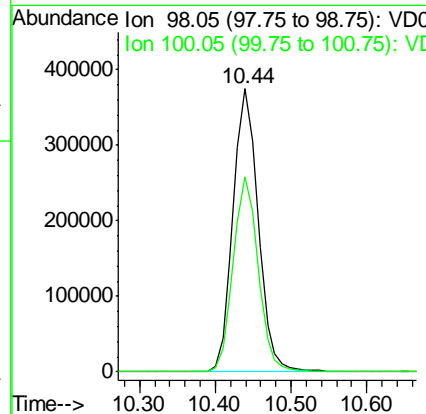
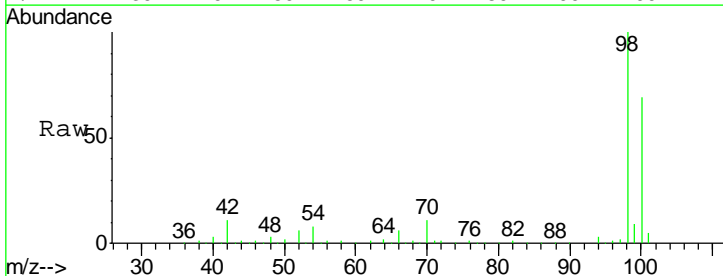
**Instrument :**  
 MSVOA\_D  
**ClientSampled :**  
 SB-03-(0-6)RE

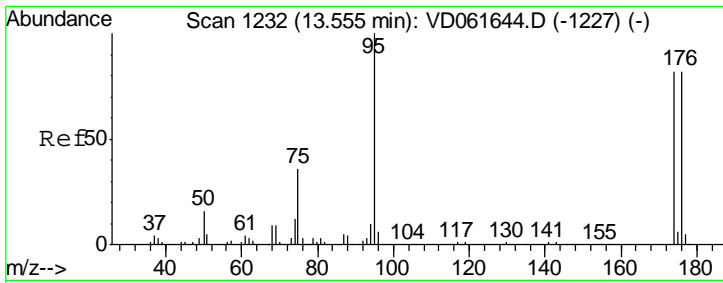
Tgt Ion	Resp	Lower	Upper
113	393443		
111	99.0	79.3	118.9
192	16.4	12.3	18.5



#50  
 Toluene-d8  
 Concen: N.D. ug/l  
 RT: 10.44 min Scan# 916  
 Delta R.T. 0.03 min  
 Lab File: VD061676.D  
 Acq: 9 Apr 2019 15:52

Tgt Ion	Resp	Lower	Upper
98	863917		
100	69.0	55.4	83.0

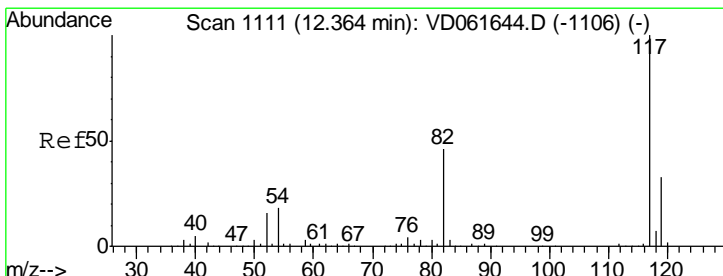
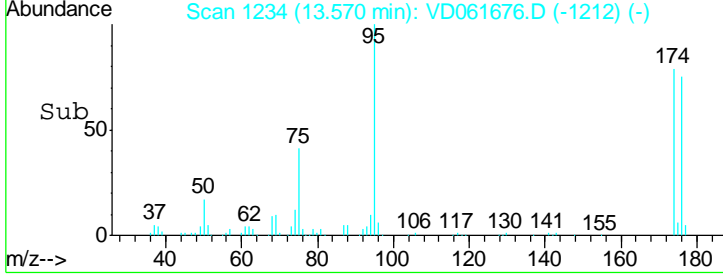
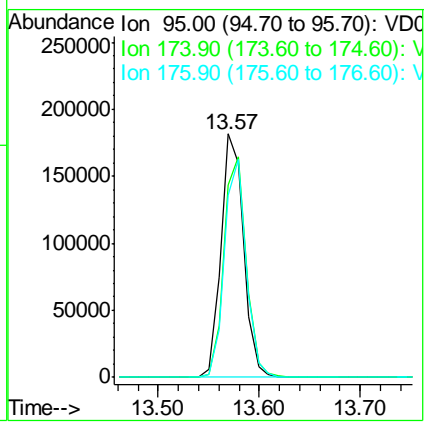
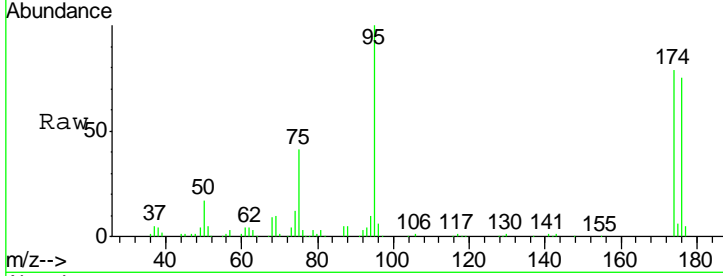




#62  
 4-Bromofluorobenzene  
 Concen: Below ug/l  
 RT: 13.57 min Scan# 1234  
 Delta R.T. 0.02 min  
 Lab File: VD061676.D  
 Acq: 9 Apr 2019 15:52

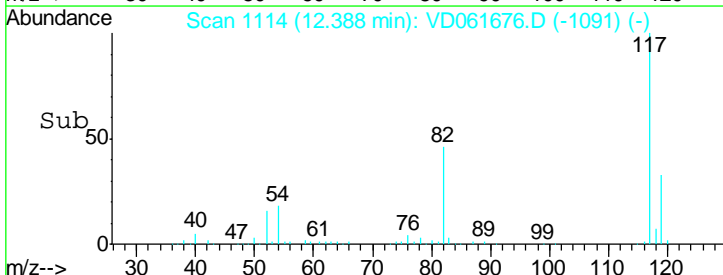
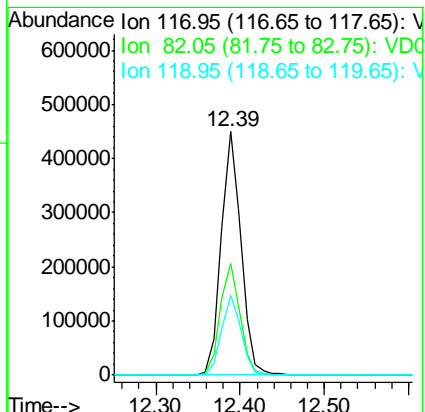
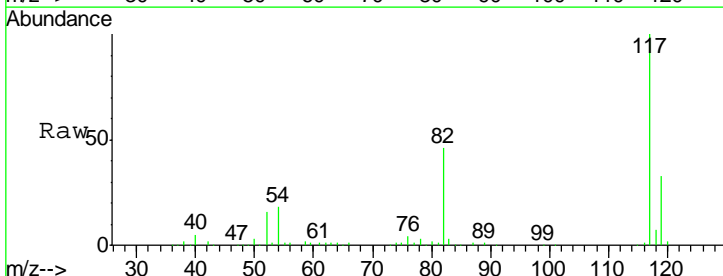
Instrument : MSVOA\_D  
 ClientSampleID : SB-03-(0-6)RE

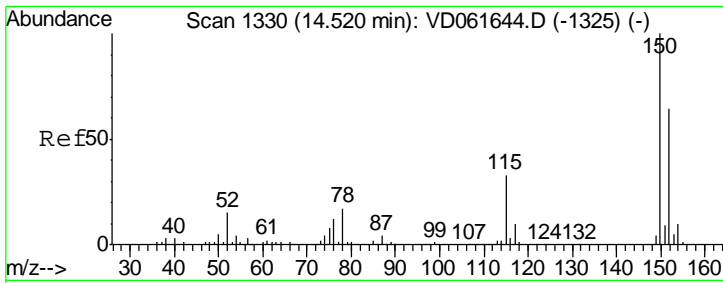
Tgt Ion	Resp	Lower	Upper
95	283557		
174	78.9	0.0	164.6
176	75.1	0.0	165.0



#63  
 Chlorobenzene-d5  
 Concen: 50.000 ug/l  
 RT: 12.39 min Scan# 1114  
 Delta R.T. 0.02 min  
 Lab File: VD061676.D  
 Acq: 9 Apr 2019 15:52

Tgt Ion	Resp	Lower	Upper
117	735219		
82	46.0	36.8	55.2
119	32.9	26.1	39.1





#72  
 1,4-Dichlorobenzene-d4  
 Concen: 50.000 ug/l  
 RT: 14.53 min Scan# 1332  
 Delta R.T. 0.01 min  
 Lab File: VD061676.D  
 Acq: 9 Apr 2019 15:52

Instrument : MSVOA\_D  
 ClientSampleId : SB-03-(0-6)RE

Tot Ion	Resp	Lower	Upper
152	100		
115	56.0	26.4	79.2
150	154.7	0.0	320.6

