

Data Path : Z:\VOASRV\HPCHEM1\MSVOA D\DATA\VD041720\  
 Data File : VD065652.D  
 Acq On : 17 Apr 2020 18:50  
 Operator : VA/SY  
 Sample : L2327-20  
 Misc : 6.25G/5.00ml/MSVOA D/SOIL  
 ALS Vial : 12 Sample Multiplier: 1

Instrument :  
 MSVOA\_D  
 ClientSampleId :  
 TP-3-S2

Integration Parameters: RTEINT.P  
 Integrator: RTE  
 Smoothing : ON Filtering: 5  
 Sampling : 1 Min Area: 3 % of largest Peak  
 Start Thrs: 0.2 Max Peaks: 100  
 Stop Thrs : 0 Peak Location: TOP

If leading or trailing edge < 100 prefer < Baseline drop else tangent >  
 Peak separation: 5

Method : Z:\VOASRV\HPCHEM1\MSVOA\_D\METHOD\82D041520S.M  
 Title : SW846 8260

Signal : TIC

peak #	R.T. min	first scan	max scan	last scan	PK TY	peak height	corr. area	corr. % max.	% of total
1	4.955	508	516	527	rBV3	8620	25252	2.28%	0.442%
2	7.920	1010	1020	1025	rBV	164456	397446	35.95%	6.950%
3	7.985	1025	1031	1049	rVB	263512	595345	53.85%	10.410%
4	8.338	1082	1091	1101	rBV	141767	322740	29.19%	5.643%
5	8.867	1172	1181	1192	rBV	400316	797517	72.13%	13.945%
6	10.343	1423	1432	1446	rBV	644396	1105590	100.00%	19.332%
7	11.649	1647	1654	1669	rBV	568960	956204	86.49%	16.720%
8	12.637	1815	1822	1831	rBV	389305	648026	58.61%	11.331%
9	13.584	1976	1983	1992	rBV	543168	870736	78.76%	15.226%

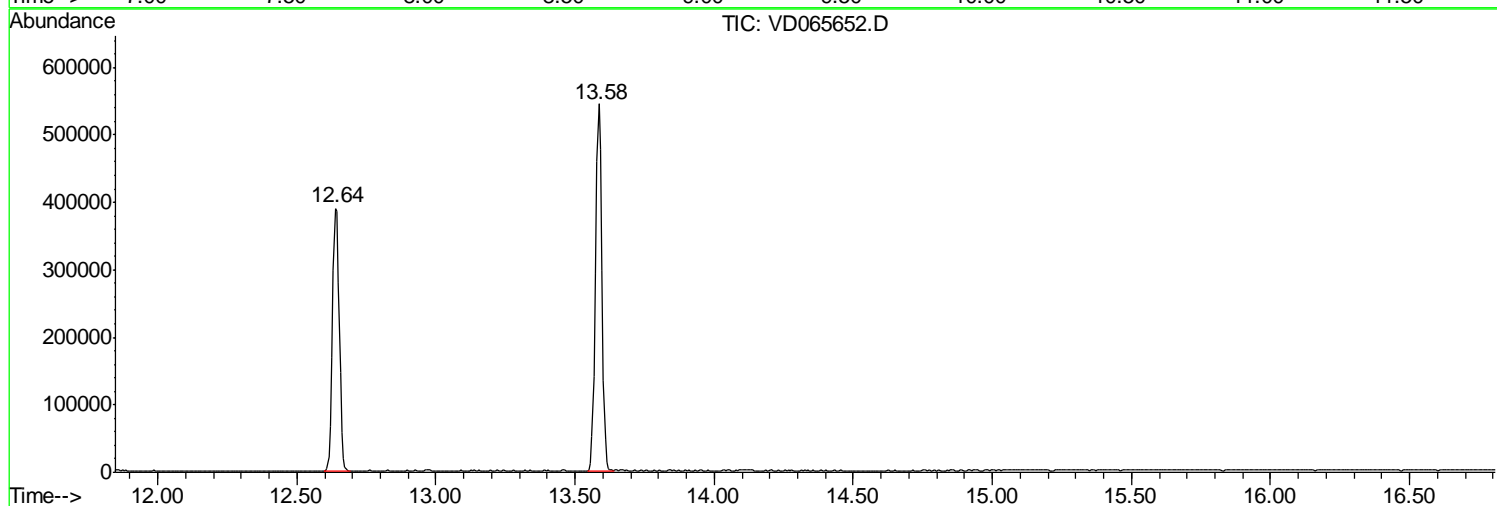
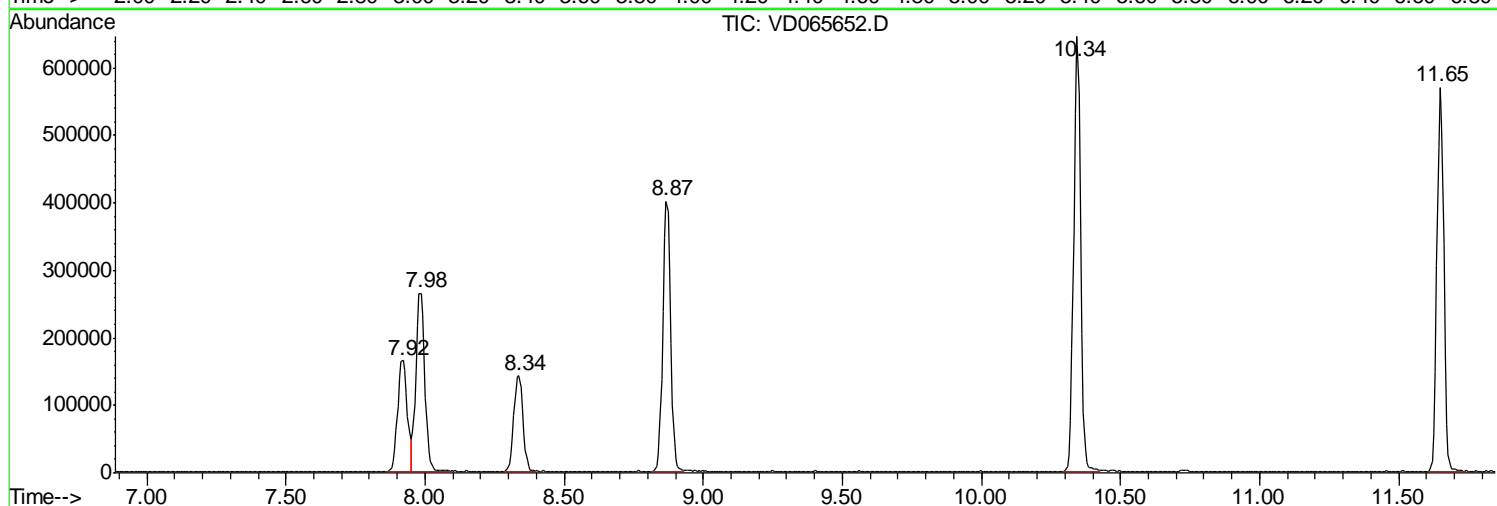
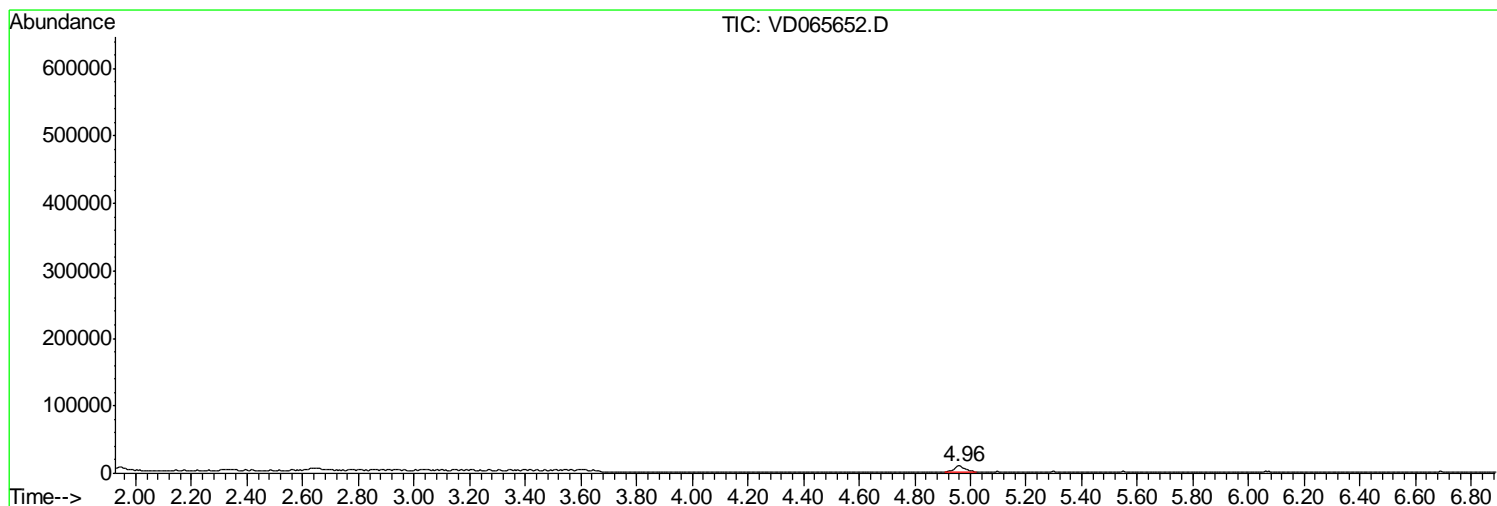
Sum of corrected areas: 5718856

Data Path : Z:\VOASRV\HPCHEM1\MSVOA D\DATA\VD041720\  
 Data File : VD065652.D  
 Acq On : 17 Apr 2020 18:50  
 Operator : VA/SY  
 Sample : L2327-20  
 Misc : 6.25G/5.00ml/MSVOA D/SOIL  
 ALS Vial : 12 Sample Multiplier: 1

Instrument :  
 MSVOA\_D  
 ClientSampled :  
 TP-3-S2

Quant Method : Z:\VOASRV\HPCHEM1\MSVOA\_D\METHOD\82D041520S.M  
 Quant Title : SW846 8260

TIC Library : C:\DATABASE\NIST11.L  
 TIC Integration Parameters: LSCINT.P



Data Path : Z:\VOASRV\HPCHEM1\MSVOA\_D\DATA\VD041720\  
Data File : VD065652.D  
Acq On : 17 Apr 2020 18:50  
Operator : VA/SY  
Sample : L2327-20  
Misc : 6.25G/5.00ml/MSVOA\_D/SOIL  
ALS Vial : 12 Sample Multiplier: 1

Instrument :  
MSVOA\_D  
ClientSampleId :  
TP-3-S2

Quant Method : Z:\VOASRV\HPCHEM1\MSVOA\_D\METHOD\82D041520S.M  
Quant Title : SW846 8260

TIC Library : C:\DATABASE\NIST11.L  
TIC Integration Parameters: LSCINT.P

No Library Search Compounds Detected

\*\*\*\*\*

Data Path : Z:\VOASRV\HPCHEM1\MSVOA\_D\DATA\VD041720\  
Data File : VD065652.D  
Acq On : 17 Apr 2020 18:50  
Operator : VA/SY  
Sample : L2327-20  
Misc : 6.25G/5.00ml/MSVOA\_D/SOIL  
ALS Vial : 12 Sample Multiplier: 1

Instrument :  
MSVOA\_D  
ClientSampleId :  
TP-3-S2

Quant Method : Z:\VOASRV\HPCHEM1\MSVOA\_D\METHOD\82D041520S.M  
Quant Title : SW846 8260

TIC Library : C:\DATABASE\NIST11.L  
TIC Integration Parameters: LSCINT.P

TIC Top Hit name	RT	EstConc	Units	Response	--Internal Standard--			
					#	RT	Resp	Conc

---