

Data Path : Z:\voasrv\HPCHEM1\MSVOA_D\Data\VD041822\
 Data File : VD072606.D
 Acq On : 18 Apr 2022 19:16
 Operator : VA/SY
 Sample : N2444-08
 Misc : 4.94G/5.00ml/MSVOA_D/SOIL
 ALS Vial : 17 Sample Multiplier: 1

Instrument :
 MSVOA_D
 ClientSampleId :
 SB-7

Quant Time: Apr 19 02:52:43 2022
 Quant Method : Z:\voasrv\HPCHEM1\MSVOA_D\Method\82D032922S.M
 Quant Title : SW846 8260
 QLast Update : Wed Mar 30 02:44:36 2022
 Response via : Initial Calibration

Compound	R.T.	QIon	Response	Conc	Units	Dev(Min)

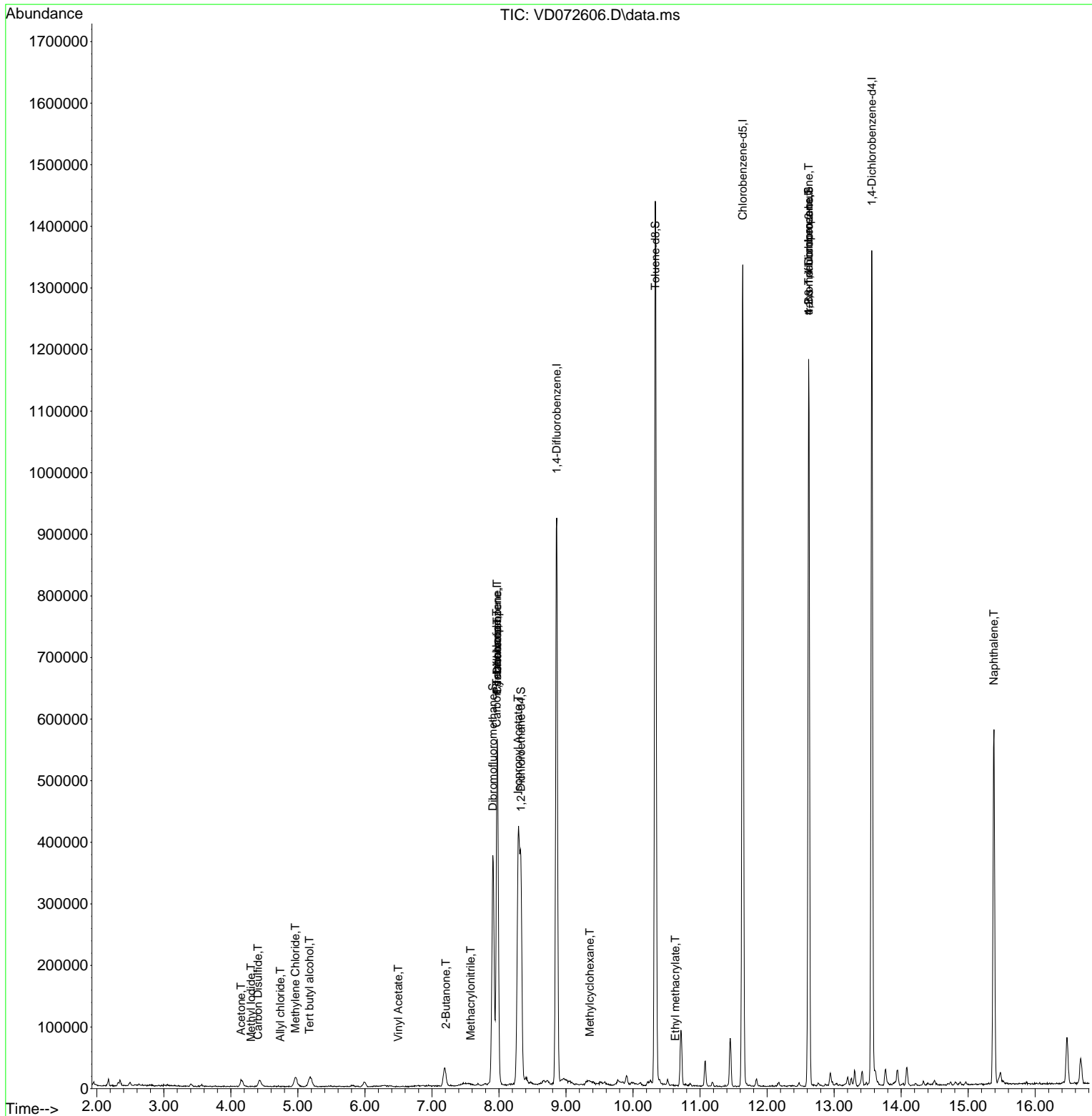
Internal Standards						
1) Pentafluorobenzene	7.973	168	418388	50.000	ug/l	0.00
34) 1,4-Difluorobenzene	8.861	114	812955	50.000	ug/l	0.00
63) Chlorobenzene-d5	11.638	117	784164	50.000	ug/l	0.00
72) 1,4-Dichlorobenzene-d4	13.561	152	362465	50.000	ug/l	0.00
System Monitoring Compounds						
33) 1,2-Dichloroethane-d4	8.326	65	257690	50.915	ug/l	0.00
Spiked Amount	50.000	Range 50 - 163	Recovery	=	101.820%	
35) Dibromofluoromethane	7.909	113	269981	42.733	ug/l	0.00
Spiked Amount	50.000	Range 54 - 147	Recovery	=	85.460%	
50) Toluene-d8	10.332	98	999051	45.492	ug/l	0.00
Spiked Amount	50.000	Range 49 - 140	Recovery	=	90.980%	
62) 4-Bromofluorobenzene	12.620	95	352661	41.118	ug/l	0.00
Spiked Amount	50.000	Range 25 - 144	Recovery	=	82.240%	
Target Compounds						
						Qvalue
10) Methyl Iodide	4.303	142	714	3.878	ug/l #	61
11) Tert butyl alcohol	5.173	59	15844	59.279	ug/l #	75
14) Allyl chloride	4.738	41	80	1.139	ug/l #	22
16) Acetone	4.150	43	19250	20.397	ug/l #	78
17) Carbon Disulfide	4.403	76	3867	4.067	ug/l #	74
20) Methylene Chloride	4.962	84	11866	2.112	ug/l #	73
23) Vinyl Acetate	6.497	43	57	6.296	ug/l #	75
25) 2-Butanone	7.209	43	4284	3.282	ug/l #	83
31) Cyclohexane	7.973	56	8740	1.321	ug/l #	1
36) 1,1-Dichloropropene	7.973	75	31655	4.957	ug/l #	52
38) Carbon Tetrachloride	7.967	117	42816	4.919	ug/l #	17
39) Methylcyclohexane	9.355	83	167	2.893	ug/l #	17
41) Methacrylonitrile	7.579	41	61	1.688	ug/l #	1
43) Isopropyl Acetate	8.285	43	9618	1.498	ug/l #	1
56) Ethyl methacrylate	10.632	69	465	1.266	ug/l #	49
76) 1,2,3-Trichloropropane	12.620	75	181090	45.808	ug/l #	100
81) trans-1,4-Dichloro-2-b...	12.620	75	181090	112.403	ug/l #	7
95) Naphthalene	15.385	128	499232	34.567	ug/l	99

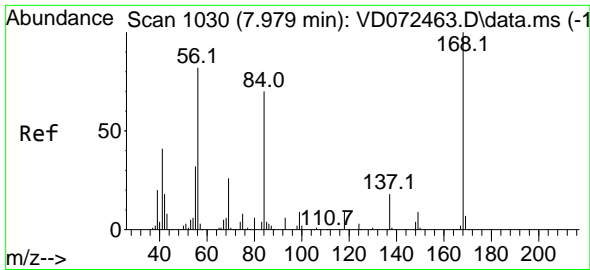
(#) = qualifier out of range (m) = manual integration (+) = signals summed

Data Path : Z:\voasrv\HPCHEM1\MSVOA_D\Data\VD041822\
 Data File : VD072606.D
 Acq On : 18 Apr 2022 19:16
 Operator : VA/SY
 Sample : N2444-08
 Misc : 4.94G/5.00ml/MSVOA_D/SOIL
 ALS Vial : 17 Sample Multiplier: 1

Instrument :
 MSVOA_D
 ClientSampleId :
 SB-7

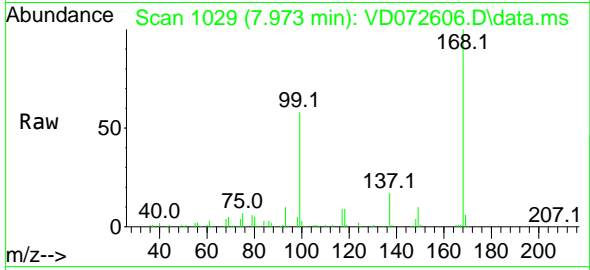
Quant Time: Apr 19 02:52:43 2022
 Quant Method : Z:\voasrv\HPCHEM1\MSVOA_D\Method\82D032922S.M
 Quant Title : SW846 8260
 QLast Update : Wed Mar 30 02:44:36 2022
 Response via : Initial Calibration



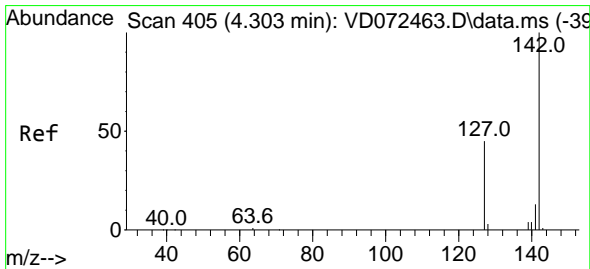
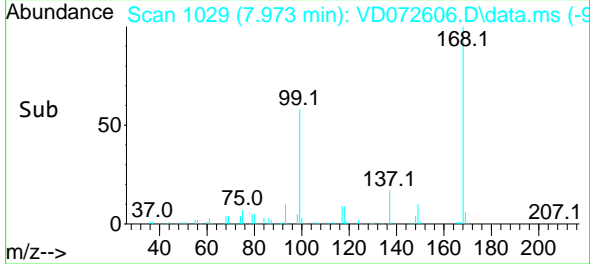
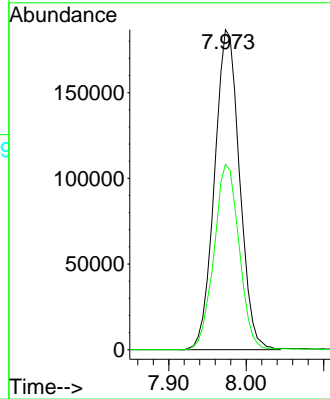


#1
 Pentafluorobenzene
 Concen: 50.000 ug/l
 RT: 7.973 min Scan# 10
 Delta R.T. -0.006 min
 Lab File: VD072606.D
 Acq: 18 Apr 2022 19:16

Instrument :
 MSVOA_D
 ClientSampleId :
 SB-7

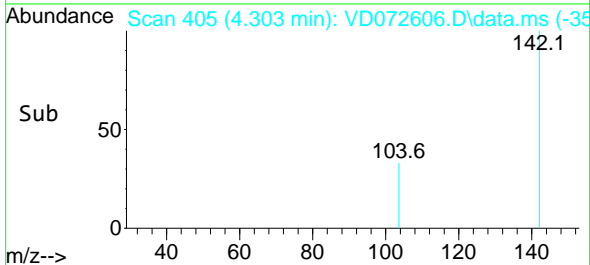
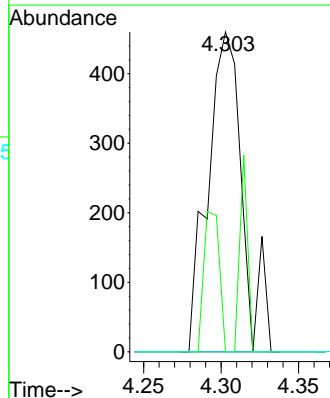
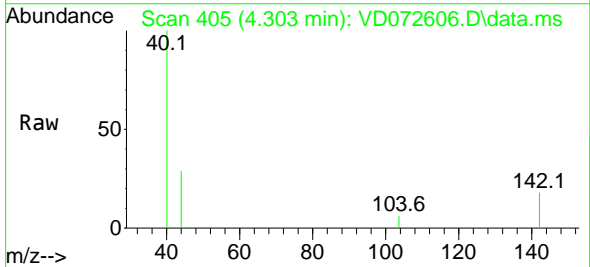


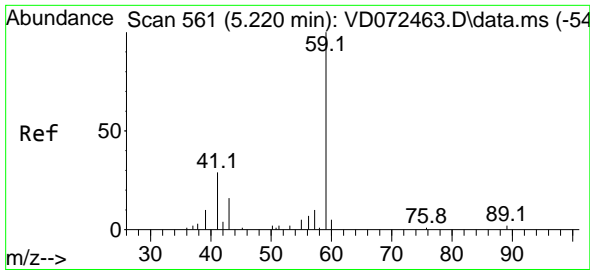
Tgt Ion:168 Resp: 418388
 Ion Ratio Lower Upper
 168 100
 99 57.9 49.8 74.6



#10
 Methyl Iodide
 Concen: 3.878 ug/l
 RT: 4.303 min Scan# 405
 Delta R.T. -0.000 min
 Lab File: VD072606.D
 Acq: 18 Apr 2022 19:16

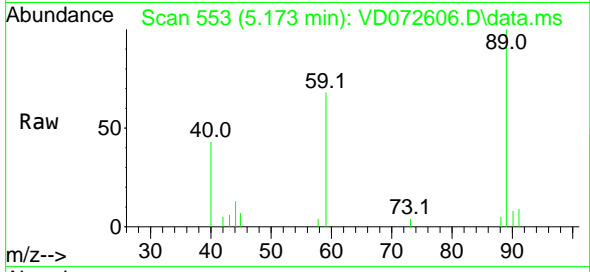
Tgt Ion:142 Resp: 714
 Ion Ratio Lower Upper
 142 100
 127 19.6 37.3 55.9#
 141 0.0 11.7 17.5#



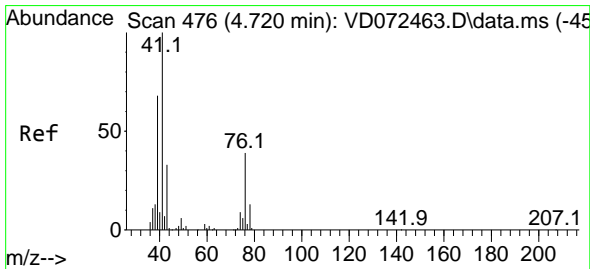
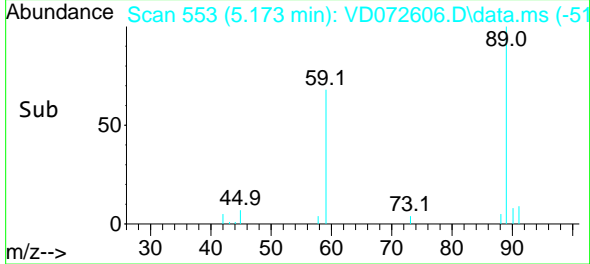
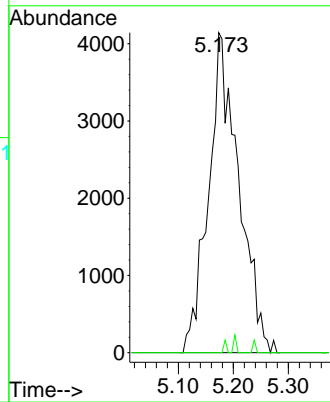


#11
 Tert butyl alcohol
 Concen: 59.279 ug/l
 RT: 5.173 min Scan# 511
 Delta R.T. -0.047 min
 Lab File: VD072606.D
 Acq: 18 Apr 2022 19:16

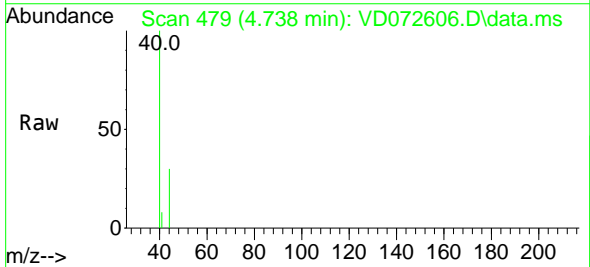
Instrument : MSVOA_D
 ClientSampleId : SB-7



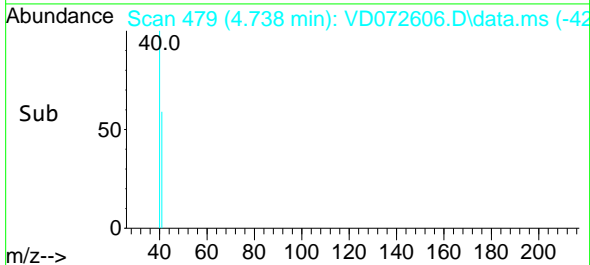
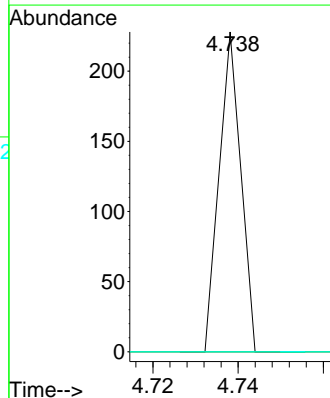
Tgt Ion: 59 Resp: 15844
 Ion Ratio Lower Upper
 59 100
 57 0.4 7.8 11.6#

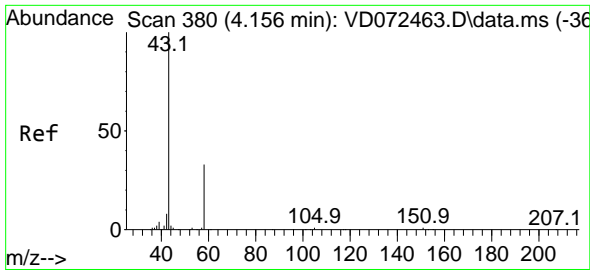


#14
 Allyl chloride
 Concen: 1.139 ug/l
 RT: 4.738 min Scan# 479
 Delta R.T. 0.018 min
 Lab File: VD072606.D
 Acq: 18 Apr 2022 19:16



Tgt Ion: 41 Resp: 80
 Ion Ratio Lower Upper
 41 100
 39 0.0 59.3 88.9#
 76 0.0 25.7 38.5#

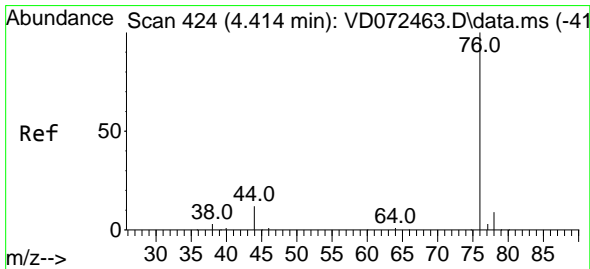
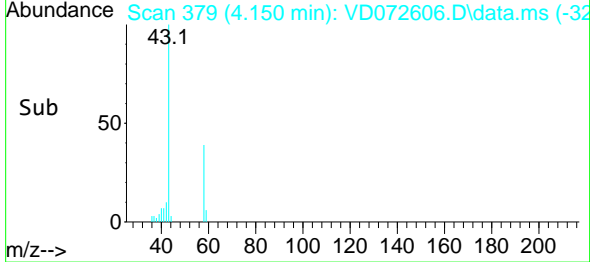
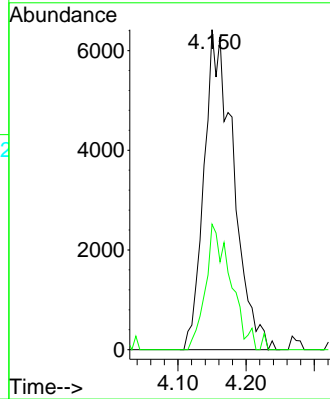
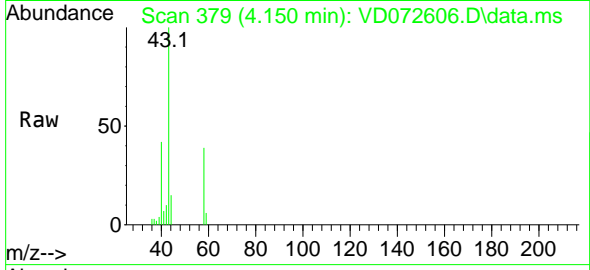




#16
 Acetone
 Concen: 20.397 ug/l
 RT: 4.150 min Scan# 31
 Delta R.T. -0.006 min
 Lab File: VD072606.D
 Acq: 18 Apr 2022 19:16

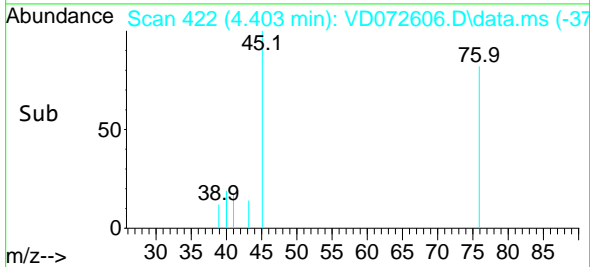
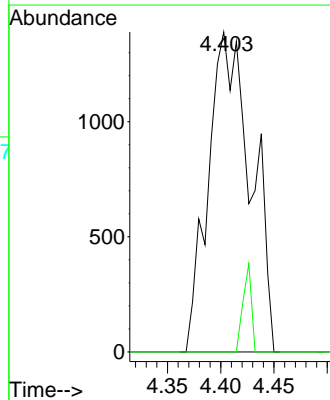
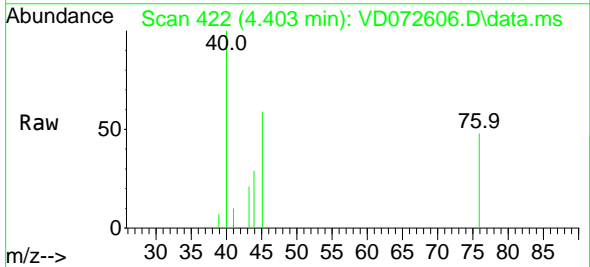
Instrument :
 MSVOA_D
 ClientSampleId :
 SB-7

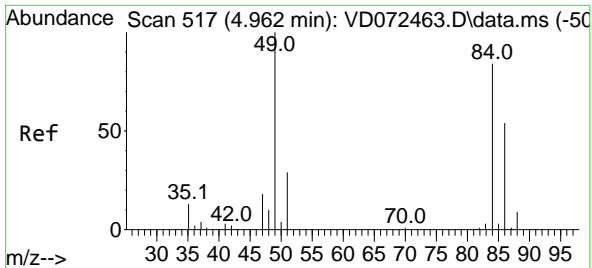
Tgt Ion: 43 Resp: 19250
 Ion Ratio Lower Upper
 43 100
 58 39.2 22.1 33.1#



#17
 Carbon Disulfide
 Concen: 4.067 ug/l
 RT: 4.403 min Scan# 422
 Delta R.T. -0.011 min
 Lab File: VD072606.D
 Acq: 18 Apr 2022 19:16

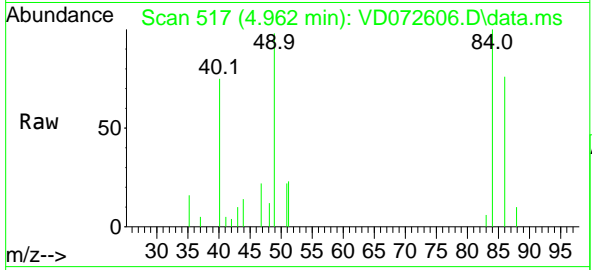
Tgt Ion: 76 Resp: 3867
 Ion Ratio Lower Upper
 76 100
 78 0.0 7.5 11.3#



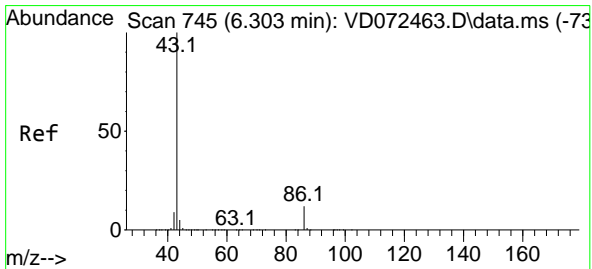
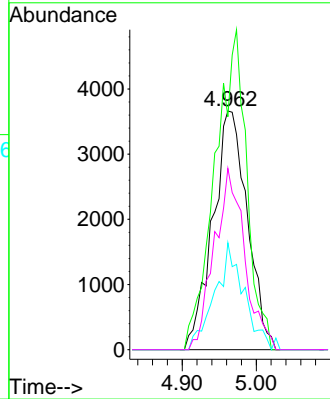
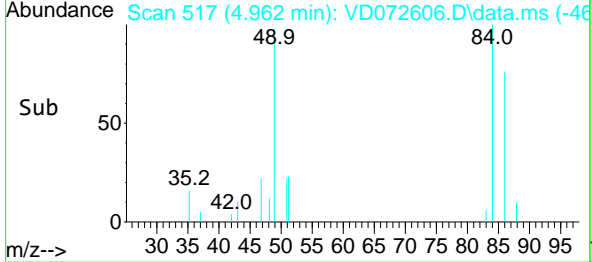


#20
 Methylene Chloride
 Concen: 2.112 ug/l
 RT: 4.962 min Scan# 517
 Delta R.T. 0.000 min
 Lab File: VD072606.D
 Acq: 18 Apr 2022 19:16

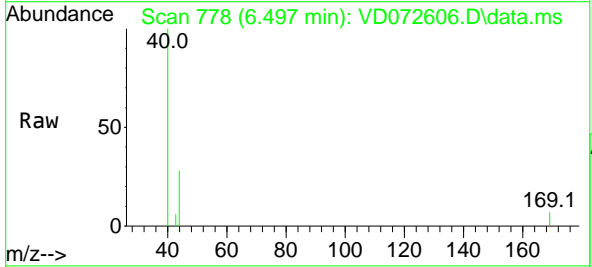
Instrument : MSVOA_D
 ClientSampleId : SB-7



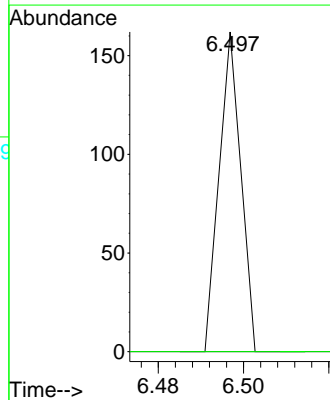
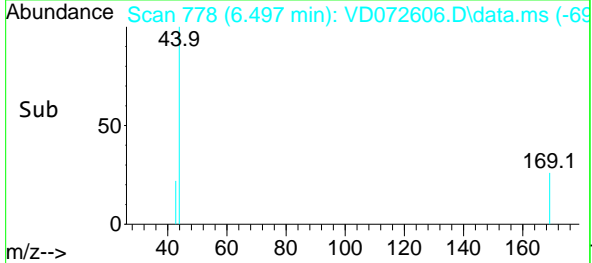
Tgt Ion: 84 Resp: 11866
 Ion Ratio Lower Upper
 84 100
 49 97.6 112.8 169.2#
 51 44.7 32.6 48.8
 86 75.9 47.9 71.9#

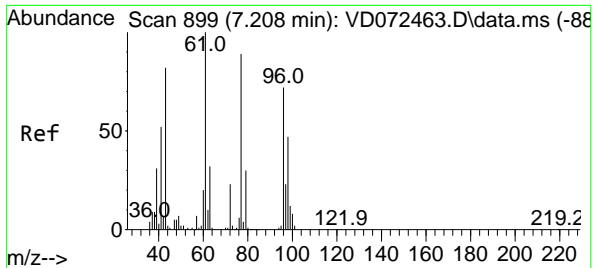


#23
 Vinyl Acetate
 Concen: 6.296 ug/l
 RT: 6.497 min Scan# 778
 Delta R.T. 0.194 min
 Lab File: VD072606.D
 Acq: 18 Apr 2022 19:16



Tgt Ion: 43 Resp: 57
 Ion Ratio Lower Upper
 43 100
 86 0.0 7.1 10.7#

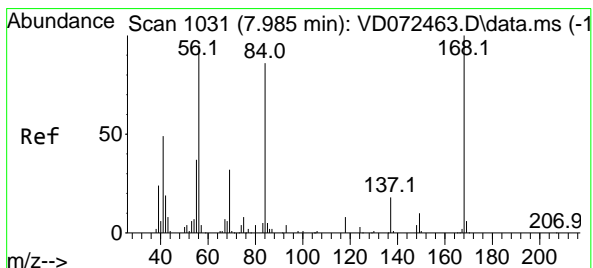
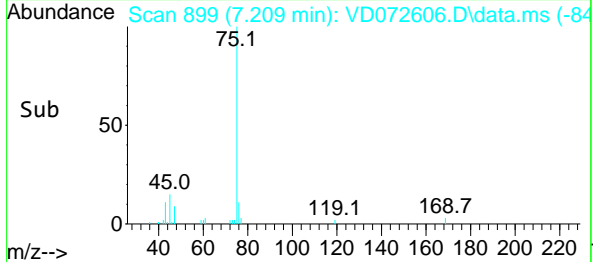
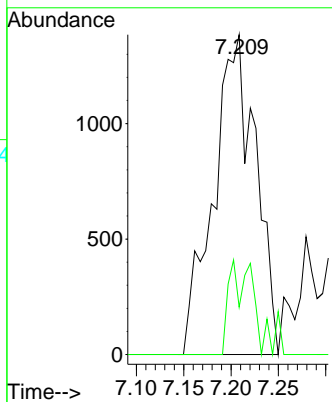
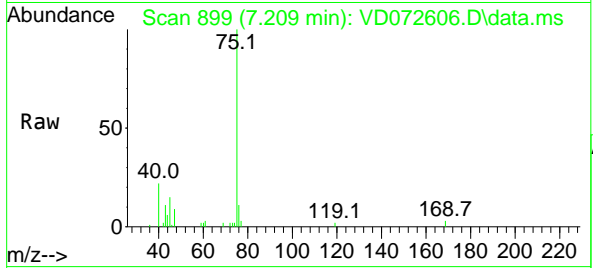




#25
 2-Butanone
 Concen: 3.282 ug/l
 RT: 7.209 min Scan# 899
 Delta R.T. 0.000 min
 Lab File: VD072606.D
 Acq: 18 Apr 2022 19:16

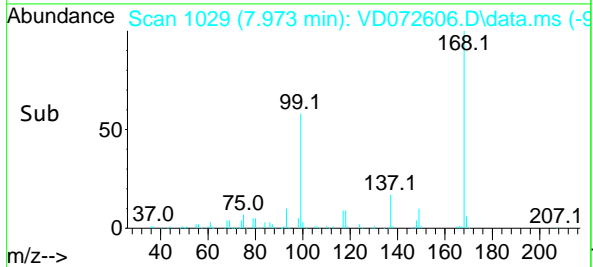
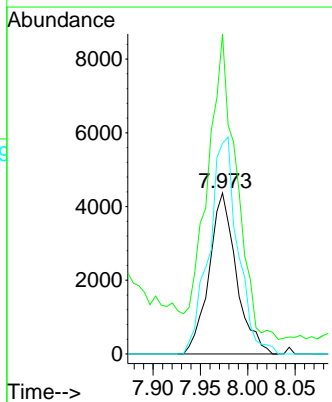
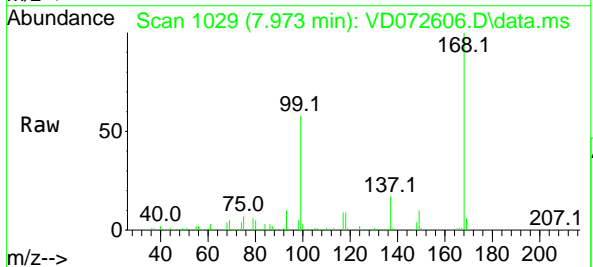
Instrument : MSVOA_D
 ClientSampleId : SB-7

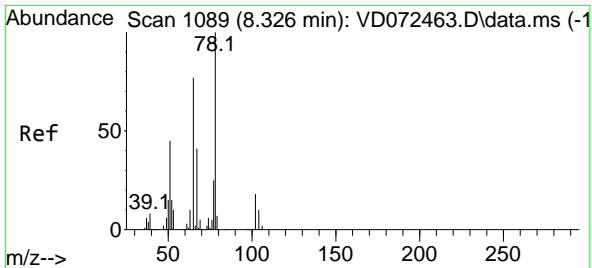
Tgt Ion: 43 Resp: 4284
 Ion Ratio Lower Upper
 43 100
 72 14.8 18.6 27.8#



#31
 Cyclohexane
 Concen: 1.321 ug/l
 RT: 7.973 min Scan# 1029
 Delta R.T. -0.012 min
 Lab File: VD072606.D
 Acq: 18 Apr 2022 19:16

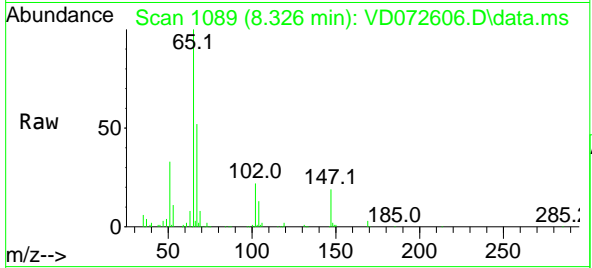
Tgt Ion: 56 Resp: 8740
 Ion Ratio Lower Upper
 56 100
 69 189.9 25.4 38.2#
 84 130.8 63.0 94.4#



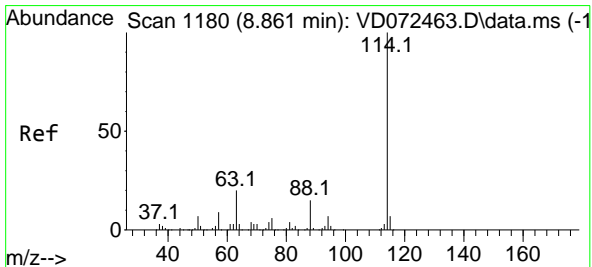
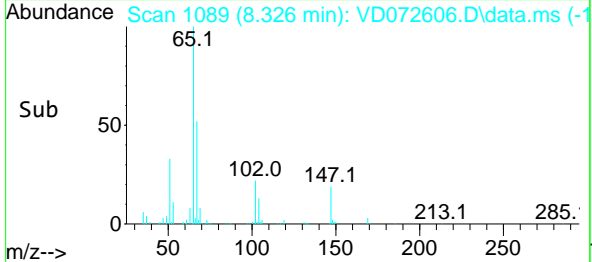
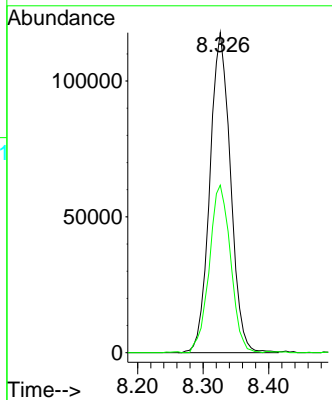


#33
 1,2-Dichloroethane-d4
 Concen: 50.915 ug/l
 RT: 8.326 min Scan# 1089
 Delta R.T. 0.000 min
 Lab File: VD072606.D
 Acq: 18 Apr 2022 19:16

Instrument : MSVOA_D
 ClientSampleId : SB-7

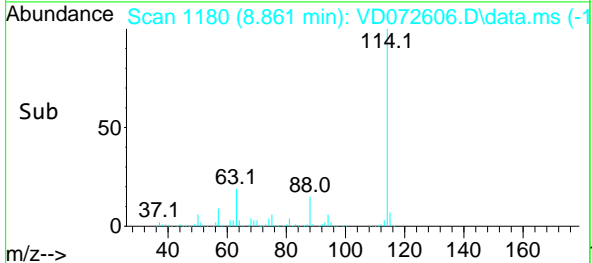
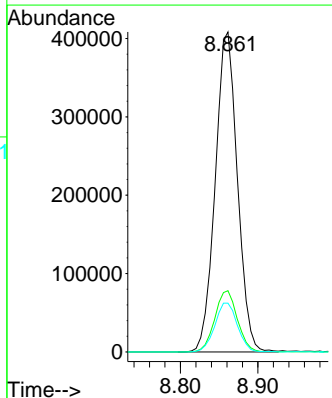
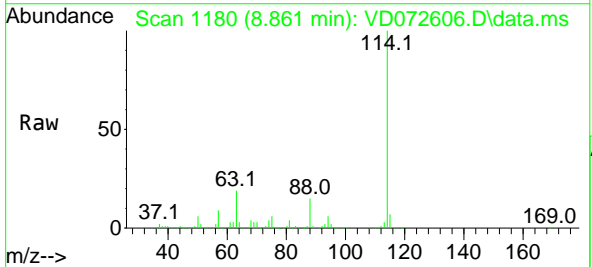


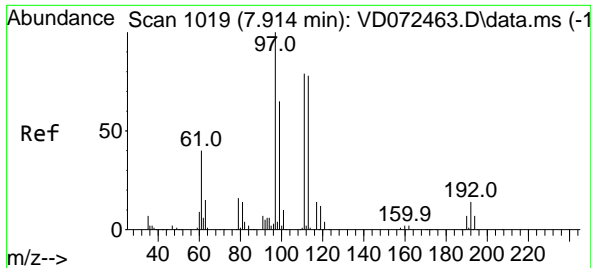
Tgt Ion: 65 Resp: 257690
 Ion Ratio Lower Upper
 65 100
 67 53.9 0.0 101.4



#34
 1,4-Difluorobenzene
 Concen: 50.000 ug/l
 RT: 8.861 min Scan# 1180
 Delta R.T. 0.000 min
 Lab File: VD072606.D
 Acq: 18 Apr 2022 19:16

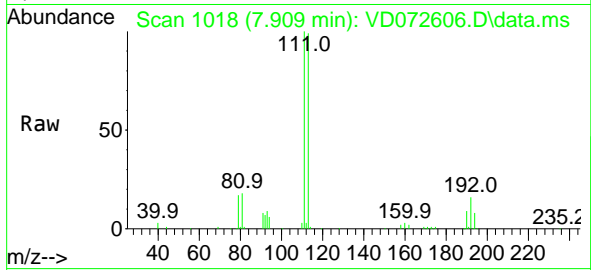
Tgt Ion: 114 Resp: 812955
 Ion Ratio Lower Upper
 114 100
 63 19.2 0.0 46.6
 88 15.2 0.0 33.2



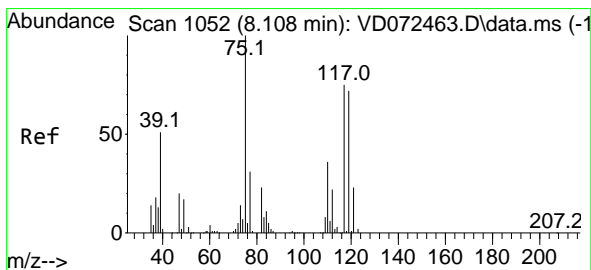
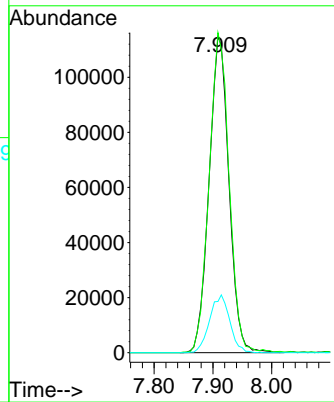
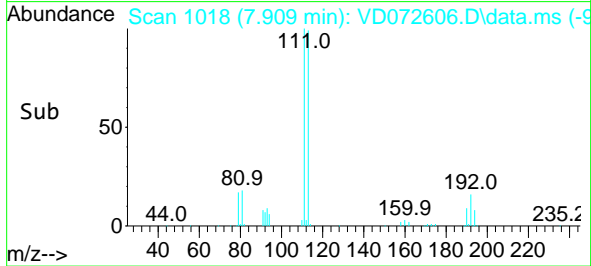


#35
 Dibromofluoromethane
 Concen: 42.733 ug/l
 RT: 7.909 min Scan# 1018
 Delta R.T. -0.006 min
 Lab File: VD072606.D
 Acq: 18 Apr 2022 19:16

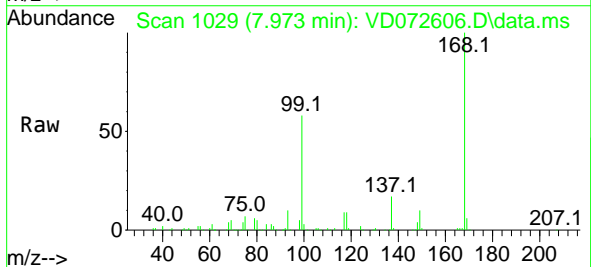
Instrument : MSVOA_D
 ClientSampleId : SB-7



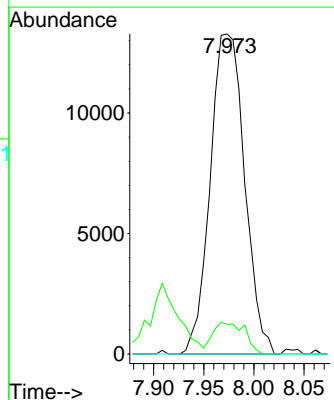
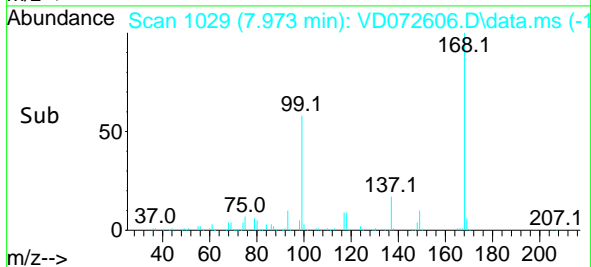
Tgt Ion: 113 Resp: 269981
 Ion Ratio Lower Upper
 113 100
 111 101.5 83.8 125.6
 192 18.5 14.6 21.8

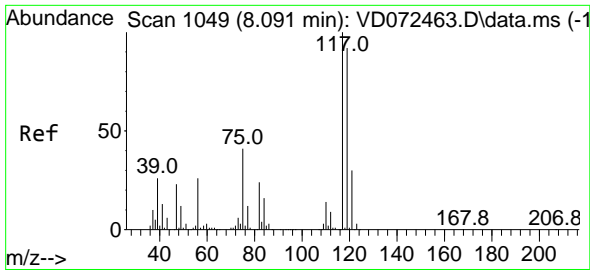


#36
 1,1-Dichloropropene
 Concen: 4.957 ug/l
 RT: 7.973 min Scan# 1029
 Delta R.T. -0.135 min
 Lab File: VD072606.D
 Acq: 18 Apr 2022 19:16



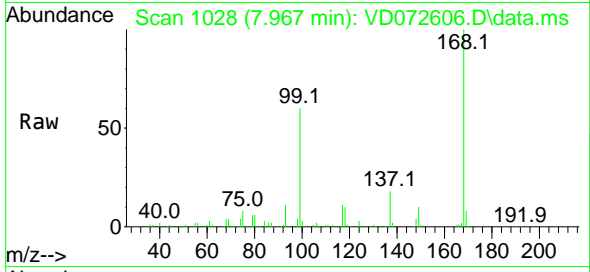
Tgt Ion: 75 Resp: 31655
 Ion Ratio Lower Upper
 75 100
 110 9.2 16.4 49.1#
 77 0.0 24.2 36.2#



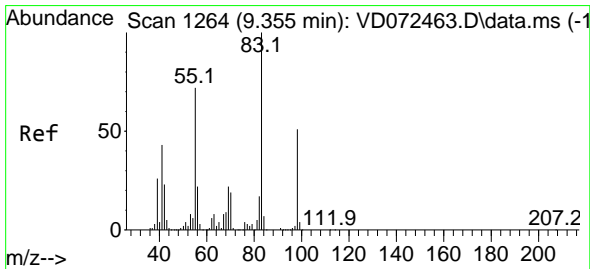
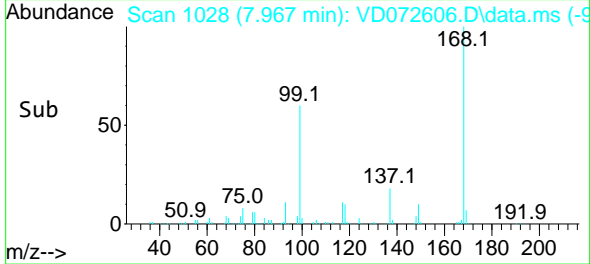
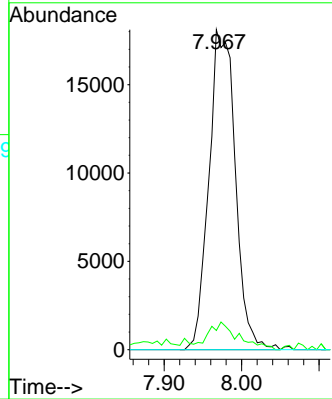


#38
 Carbon Tetrachloride
 Concen: 4.919 ug/l
 RT: 7.967 min Scan# 1028
 Delta R.T. -0.123 min
 Lab File: VD072606.D
 Acq: 18 Apr 2022 19:16

Instrument : MSVOA_D
 ClientSampleId : SB-7

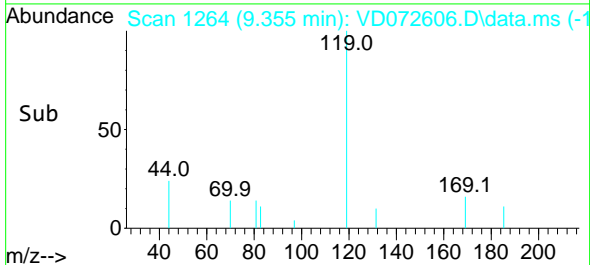
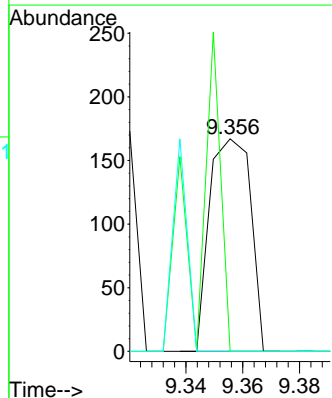
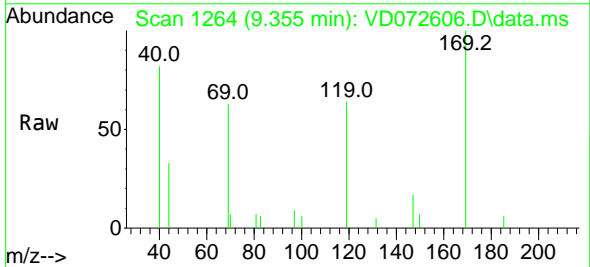


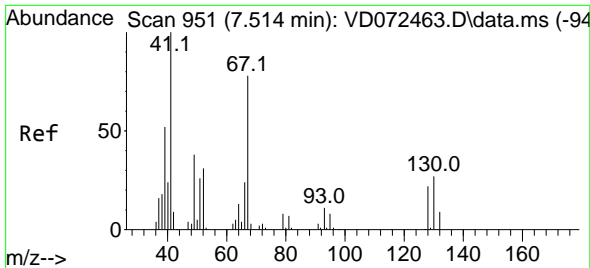
Tgt Ion: 117 Resp: 42816
 Ion Ratio Lower Upper
 117 100
 119 6.0 75.8 113.6#
 121 0.0 24.5 36.7#



#39
 Methylcyclohexane
 Concen: 2.893 ug/l
 RT: 9.355 min Scan# 1264
 Delta R.T. 0.000 min
 Lab File: VD072606.D
 Acq: 18 Apr 2022 19:16

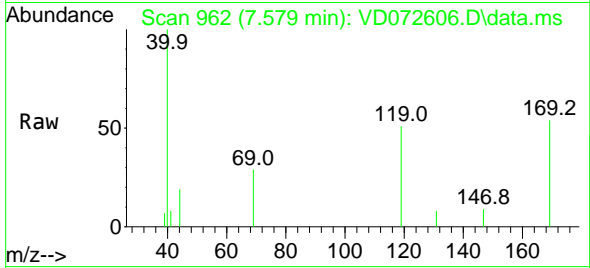
Tgt Ion: 83 Resp: 167
 Ion Ratio Lower Upper
 83 100
 55 0.0 63.2 94.8#
 98 0.0 38.2 57.4#





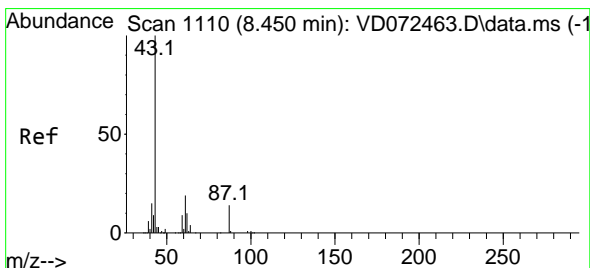
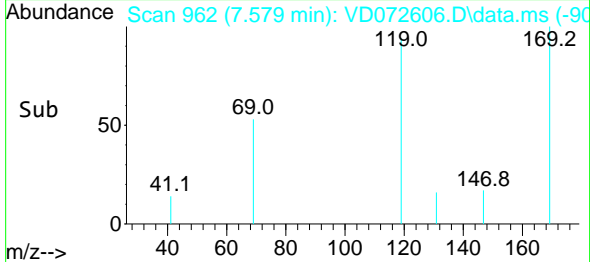
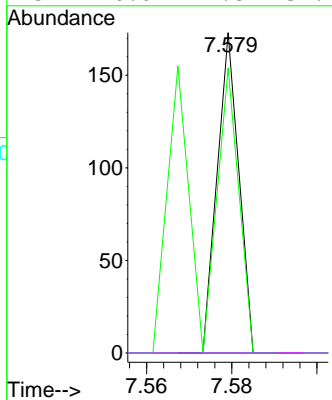
#41
 Methacrylonitrile
 Concen: 1.688 ug/l
 RT: 7.579 min Scan# 90
 Delta R.T. 0.065 min
 Lab File: VD072606.D
 Acq: 18 Apr 2022 19:16

Instrument :
 MSVOA_D
 ClientSampleId :
 SB-7



Tgt Ion: 41 Resp: 61

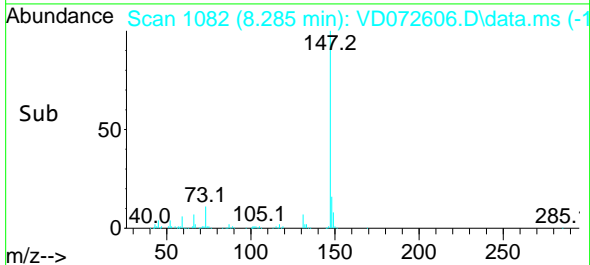
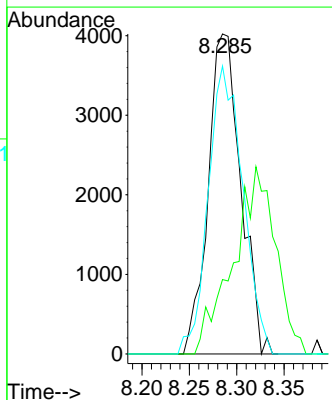
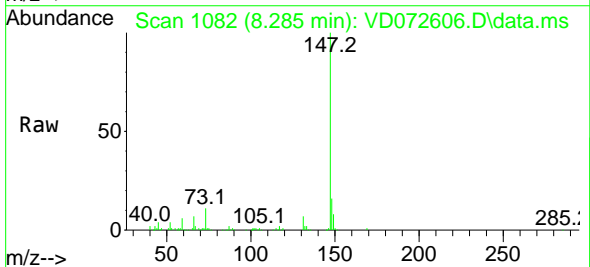
Ion	Ratio	Lower	Upper
41	100		
39	178.7	44.6	67.0#
67	0.0	48.2	72.4#
52	0.0	22.8	34.2#

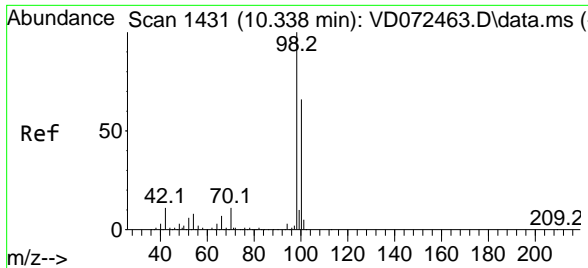


#43
 Isopropyl Acetate
 Concen: 1.498 ug/l
 RT: 8.285 min Scan# 1082
 Delta R.T. -0.165 min
 Lab File: VD072606.D
 Acq: 18 Apr 2022 19:16

Tgt Ion: 43 Resp: 9618

Ion	Ratio	Lower	Upper
43	100		
61	0.0	22.4	33.6#
87	95.9	8.7	13.1#

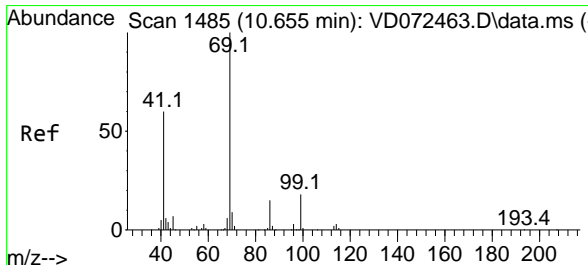
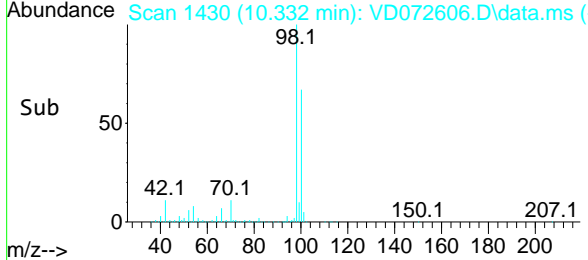
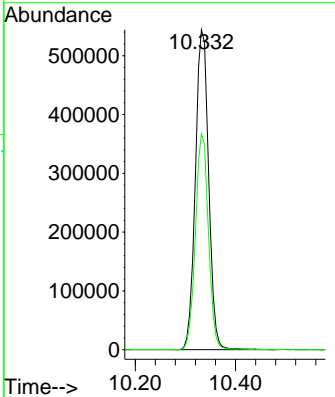
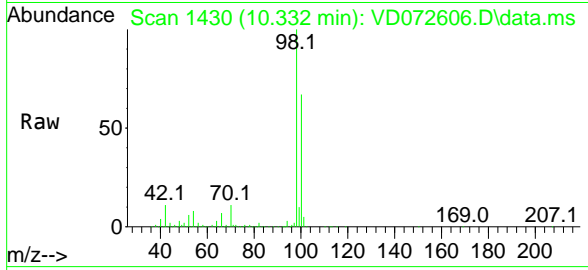




#50
 Toluene-d8
 Concen: 45.492 ug/l
 RT: 10.332 min Scan# 1430
 Delta R.T. -0.006 min
 Lab File: VD072606.D
 Acq: 18 Apr 2022 19:16

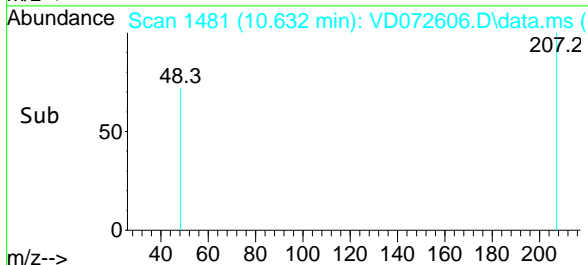
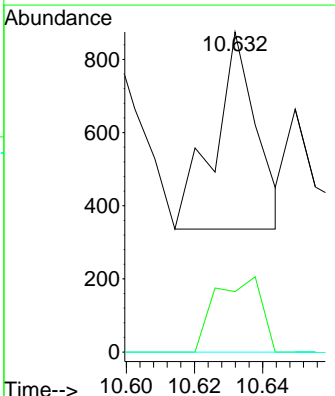
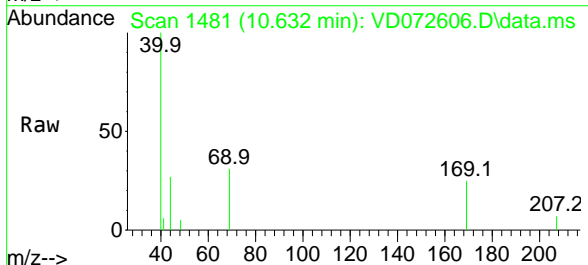
Instrument : MSVOA_D
 ClientSampleId : SB-7

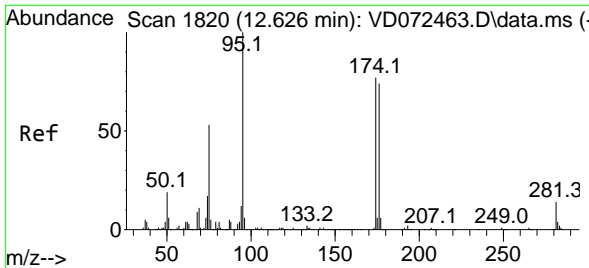
Tgt Ion	Resp	Lower	Upper
98	100		
100	66.3	52.4	78.6



#56
 Ethyl methacrylate
 Concen: 1.266 ug/l
 RT: 10.632 min Scan# 1481
 Delta R.T. -0.023 min
 Lab File: VD072606.D
 Acq: 18 Apr 2022 19:16

Tgt Ion	Resp	Lower	Upper
69	100		
41	41.5	63.0	94.6#
39	0.0	33.8	50.8#



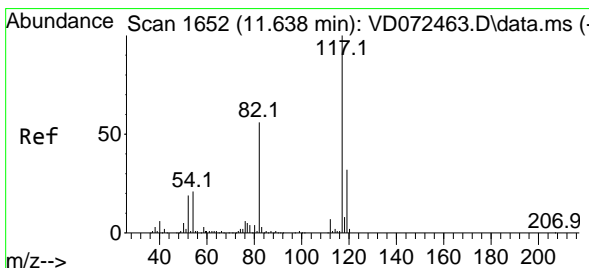
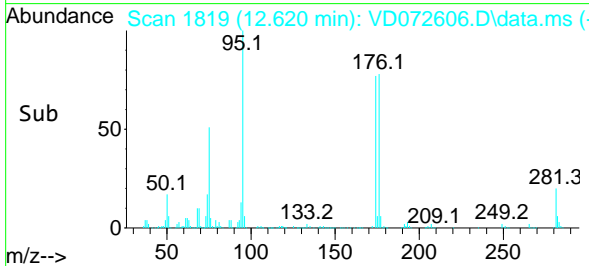
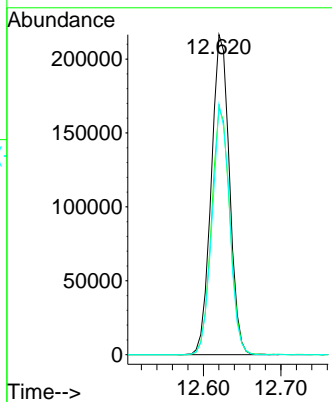
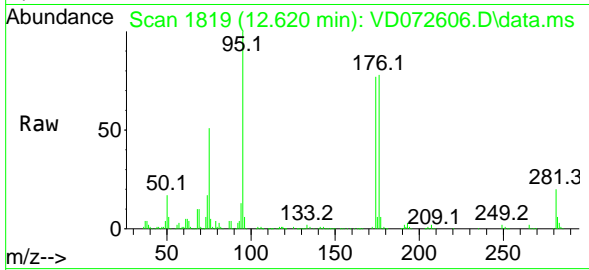


#62
 4-Bromofluorobenzene
 Concen: 41.118 ug/l
 RT: 12.620 min Scan# 1819
 Delta R.T. -0.006 min
 Lab File: VD072606.D
 Acq: 18 Apr 2022 19:16

Instrument : MSVOA_D
 ClientSampleId : SB-7

Tgt Ion: 95 Resp: 352661

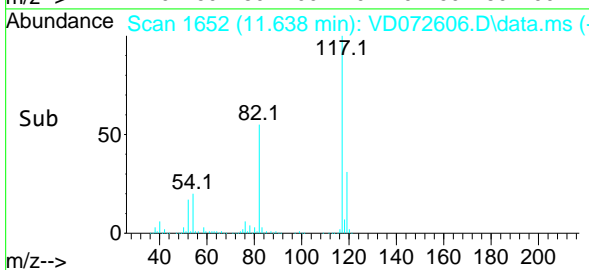
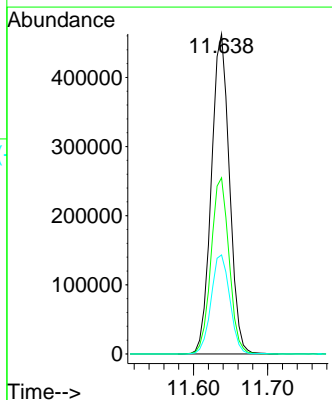
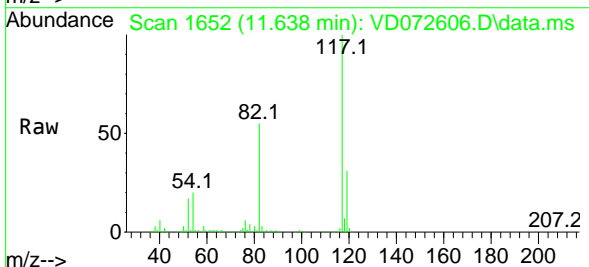
Ion	Ratio	Lower	Upper
95	100		
174	77.4	0.0	152.8
176	75.4	0.0	145.4

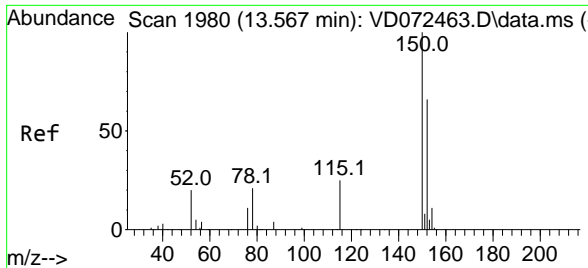


#63
 Chlorobenzene-d5
 Concen: 50.000 ug/l
 RT: 11.638 min Scan# 1652
 Delta R.T. 0.000 min
 Lab File: VD072606.D
 Acq: 18 Apr 2022 19:16

Tgt Ion: 117 Resp: 784164

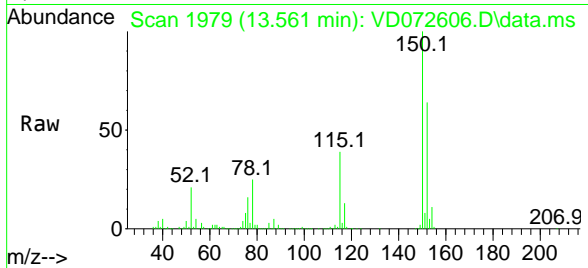
Ion	Ratio	Lower	Upper
117	100		
82	55.1	45.3	67.9
119	30.9	26.6	40.0



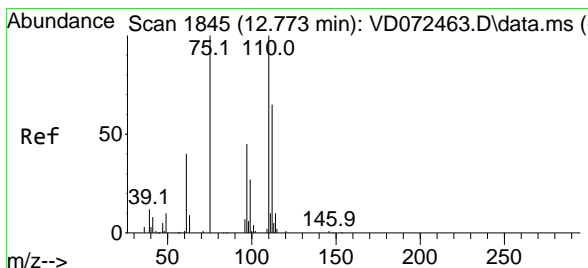
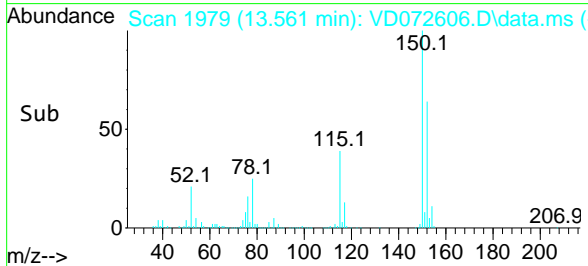
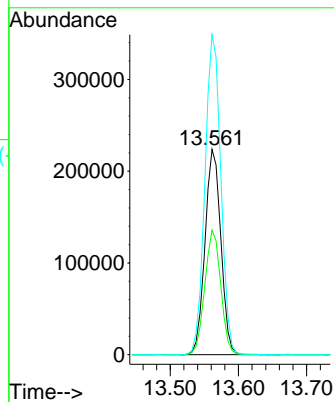


#72
 1,4-Dichlorobenzene-d4
 Concen: 50.000 ug/l
 RT: 13.561 min Scan# 1980
 Delta R.T. -0.006 min
 Lab File: VD072606.D
 Acq: 18 Apr 2022 19:16

Instrument : MSVOA_D
 ClientSampleId : SB-7

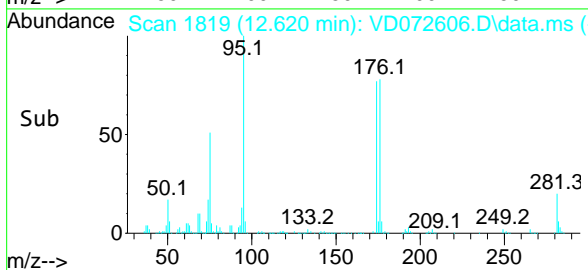
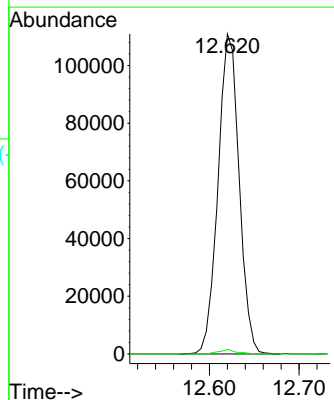
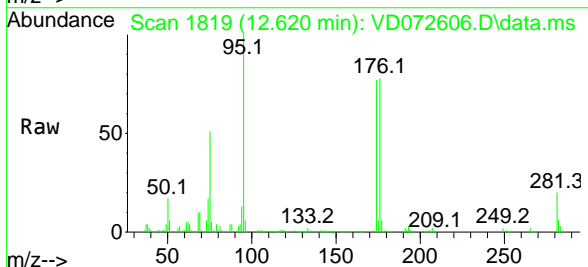


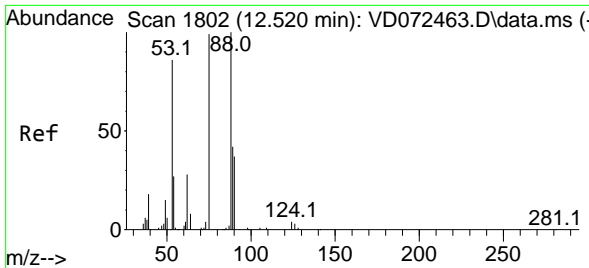
Tgt Ion:152 Resp: 362465
 Ion Ratio Lower Upper
 152 100
 115 61.1 31.3 93.8
 150 156.0 0.0 348.6



#76
 1,2,3-Trichloropropane
 Concen: 45.808 ug/l
 RT: 12.620 min Scan# 1819
 Delta R.T. -0.153 min
 Lab File: VD072606.D
 Acq: 18 Apr 2022 19:16

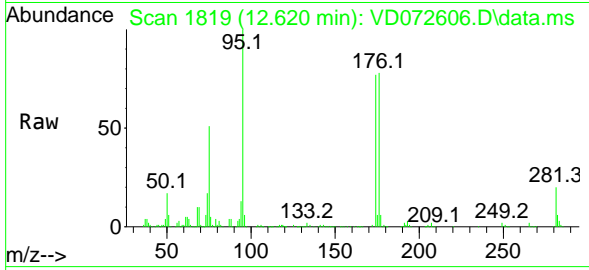
Tgt Ion: 75 Resp: 181090
 Ion Ratio Lower Upper
 75 100
 77 1.2 0.0 0.0#



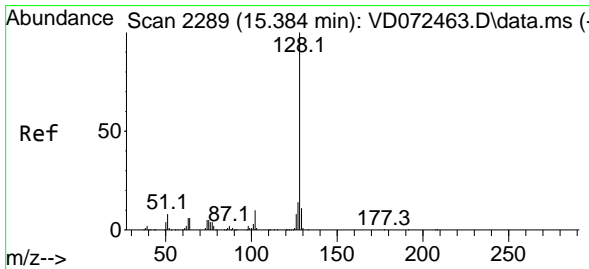
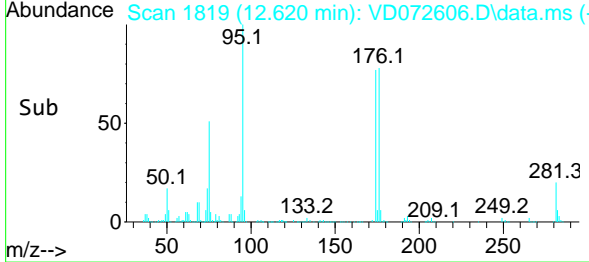
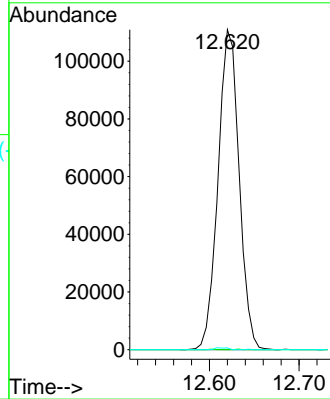


#81
 trans-1,4-Dichloro-2-butene
 Concen: 112.403 ug/l
 RT: 12.620 min Scan# 1819
 Delta R.T. 0.100 min
 Lab File: VD072606.D
 Acq: 18 Apr 2022 19:16

Instrument : MSVOA_D
 ClientSampleId : SB-7



Tgt Ion: 75 Resp: 181090
 Ion Ratio Lower Upper
 75 100
 53 0.0 86.5 129.7#
 89 0.4 33.9 50.9#



#95
 Naphthalene
 Concen: 34.567 ug/l
 RT: 15.385 min Scan# 2289
 Delta R.T. 0.000 min
 Lab File: VD072606.D
 Acq: 18 Apr 2022 19:16

Tgt Ion: 128 Resp: 499232
 Ion Ratio Lower Upper
 128 100
 127 13.1 10.3 15.5
 129 11.4 8.4 12.6

