

Data Path : Z:\voasrv\HPCHEM1\MSVOA_D\Data\VD041823\
 Data File : VD075723.D
 Acq On : 18 Apr 2023 13:24
 Operator : KP/SY
 Sample : 02369-01
 Misc : 5.01G/5.00ml/MSVOA_D/SOIL
 ALS Vial : 1 Sample Multiplier: 1

Instrument :
 MSVOA_D
 ClientSampleId :
 SU-04-041423

Integration Parameters: RTEINT.P

Integrator: RTE
 Smoothing : ON Filtering: 5
 Sampling : 1 Min Area: 3 % of largest Peak
 Start Thrs: 0.2 Max Peaks: 100
 Stop Thrs : 0 Peak Location: TOP

If leading or trailing edge < 100 prefer < Baseline drop else tangent >
 Peak separation: 5

Method : Z:\voasrv\HPCHEM1\MSVOA_D\Method\82D041323S.M
 Title : SW846 8260

Signal : TIC: VD075723.D\data.ms

peak #	R.T. min	first scan	max scan	last scan	PK TY	peak height	corr. area	corr. % max.	% of total
1	1.734	19	25	32	rBV	145028	259418	100.00%	37.964%
2	3.081	252	254	261	rVB3	1886	2831	1.09%	0.414%
3	4.798	540	546	548	rBV4	1781	3248	1.25%	0.475%
4	7.063	926	931	938	rVB2	2410	5353	2.06%	0.783%
5	7.810	1050	1058	1063	rBV2	17304	41659	16.06%	6.096%
6	7.875	1063	1069	1081	rVB2	18617	38895	14.99%	5.692%
7	8.228	1121	1129	1137	rBV4	16783	37794	14.57%	5.531%
8	8.775	1215	1222	1233	rVB	28865	56881	21.93%	8.324%
9	10.269	1468	1476	1484	rBV	45244	80527	31.04%	11.784%
10	11.580	1693	1699	1706	rBV	38555	66815	25.76%	9.778%
11	12.574	1862	1868	1874	rVB2	24708	40013	15.42%	5.856%
12	13.521	2021	2029	2036	rVB	31441	49898	19.23%	7.302%

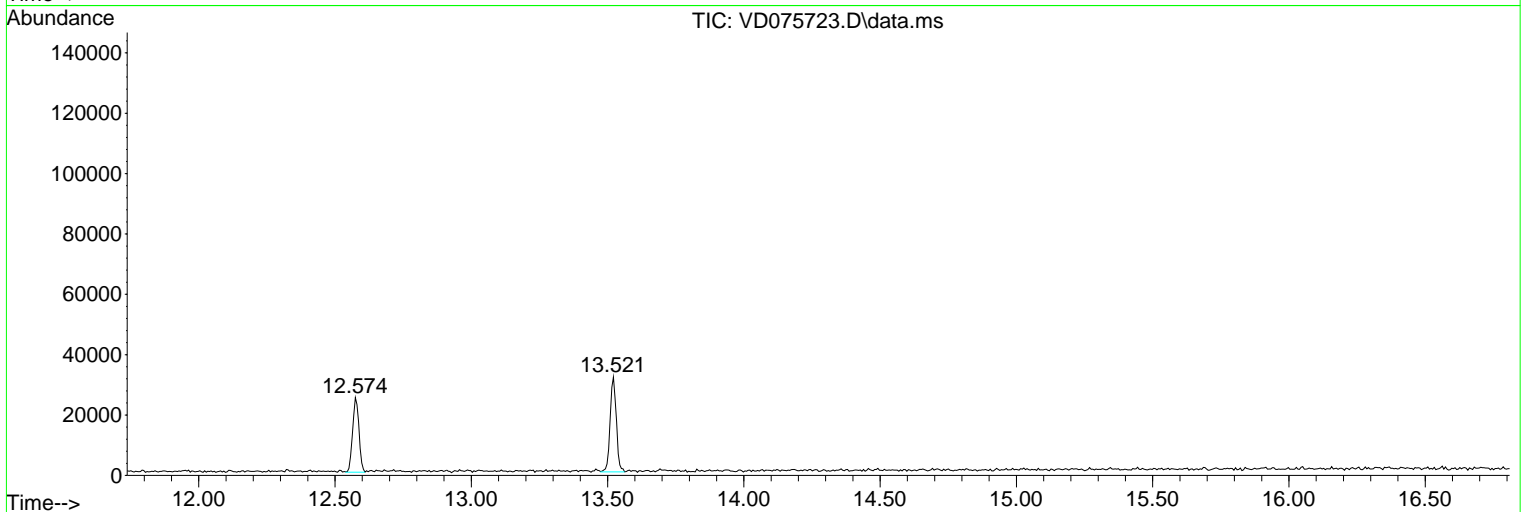
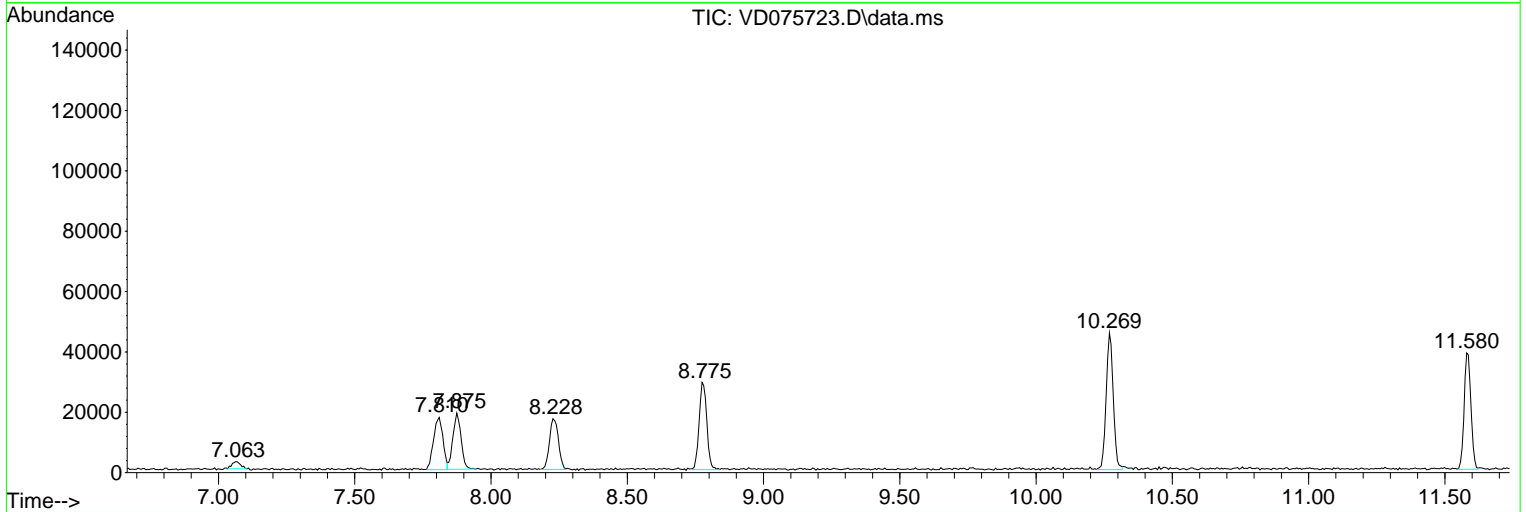
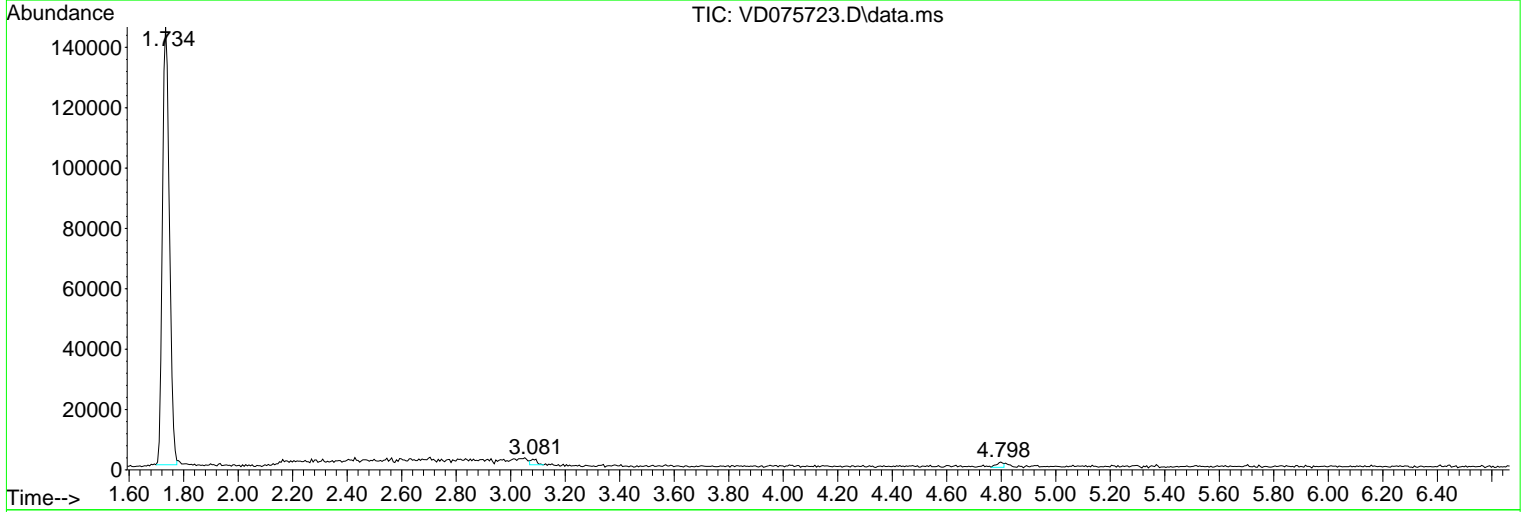
Sum of corrected areas: 683332

Data Path : Z:\voasrv\HPCHEM1\MSVOA_D\Data\VD041823\
 Data File : VD075723.D
 Acq On : 18 Apr 2023 13:24
 Operator : KP/SY
 Sample : 02369-01
 Misc : 5.01G/5.00ml/MSVOA_D/SOIL
 ALS Vial : 1 Sample Multiplier: 1

Instrument :
 MSVOA_D
 ClientSampleId :
 SU-04-041423

Quant Method : Z:\voasrv\HPCHEM1\MSVOA_D\Method\82D041323S.M
 Quant Title : SW846 8260

TIC Library : C:\Database\NIST20.L
 TIC Integration Parameters: LSCINT.P



Library Search Compound Report

Data Path : Z:\voasrv\HPCHEM1\MSVOA_D\Data\VD041823\
Data File : VD075723.D
Acq On : 18 Apr 2023 13:24
Operator : KP/SY
Sample : 02369-01
Misc : 5.01G/5.00ml/MSVOA_D/SOIL
ALS Vial : 1 Sample Multiplier: 1

Instrument :
MSVOA_D
ClientSampleId :
SU-04-041423

Quant Method : Z:\voasrv\HPCHEM1\MSVOA_D\Method\82D041323S.M
Quant Title : SW846 8260

TIC Library : C:\Database\NIST20.L
TIC Integration Parameters: LSCINT.P

No Library Search Compounds Detected

Data Path : Z:\voasrv\HPCHEM1\MSVOA_D\Data\VD041823\
Data File : VD075723.D
Acq On : 18 Apr 2023 13:24
Operator : KP/SY
Sample : 02369-01
Misc : 5.01G/5.00ml/MSVOA_D/SOIL
ALS Vial : 1 Sample Multiplier: 1

Instrument :
MSVOA_D
ClientSampleId :
SU-04-041423

Quant Method : Z:\voasrv\HPCHEM1\MSVOA_D\Method\82D041323S.M
Quant Title : SW846 8260

TIC Library : C:\Database\NIST20.L
TIC Integration Parameters: LSCINT.P

TIC Top Hit name	RT	EstConc	Units	Response	--Internal Standard--			
					#	RT	Resp	Conc
