

Data Path : Z:\VOASRV\HPCHEM1\MSVOA D\DATA\VD041919\  
 Data File : VD061921.D  
 Acq On : 19 Apr 2019 20:41  
 Operator : VA/AP  
 Sample : K2413-02  
 Misc : 5.00µ/5ml/MSVOA D/SOIL  
 ALS Vial : 20 Sample Multiplier: 1

Instrument :  
 MSVOA\_D  
 ClientSampleId :  
 NCC-TOPSOIL-CR

Quant Time: Apr 20 00:00:21 2019  
 Quant Method : Z:\VOASRV\HPCHEM1\MSVOA\_D\METHOD\82D041519S.M  
 Quant Title : SW846 8260  
 QLast Update : Thu Apr 18 13:49:04 2019  
 Response via : Initial Calibration

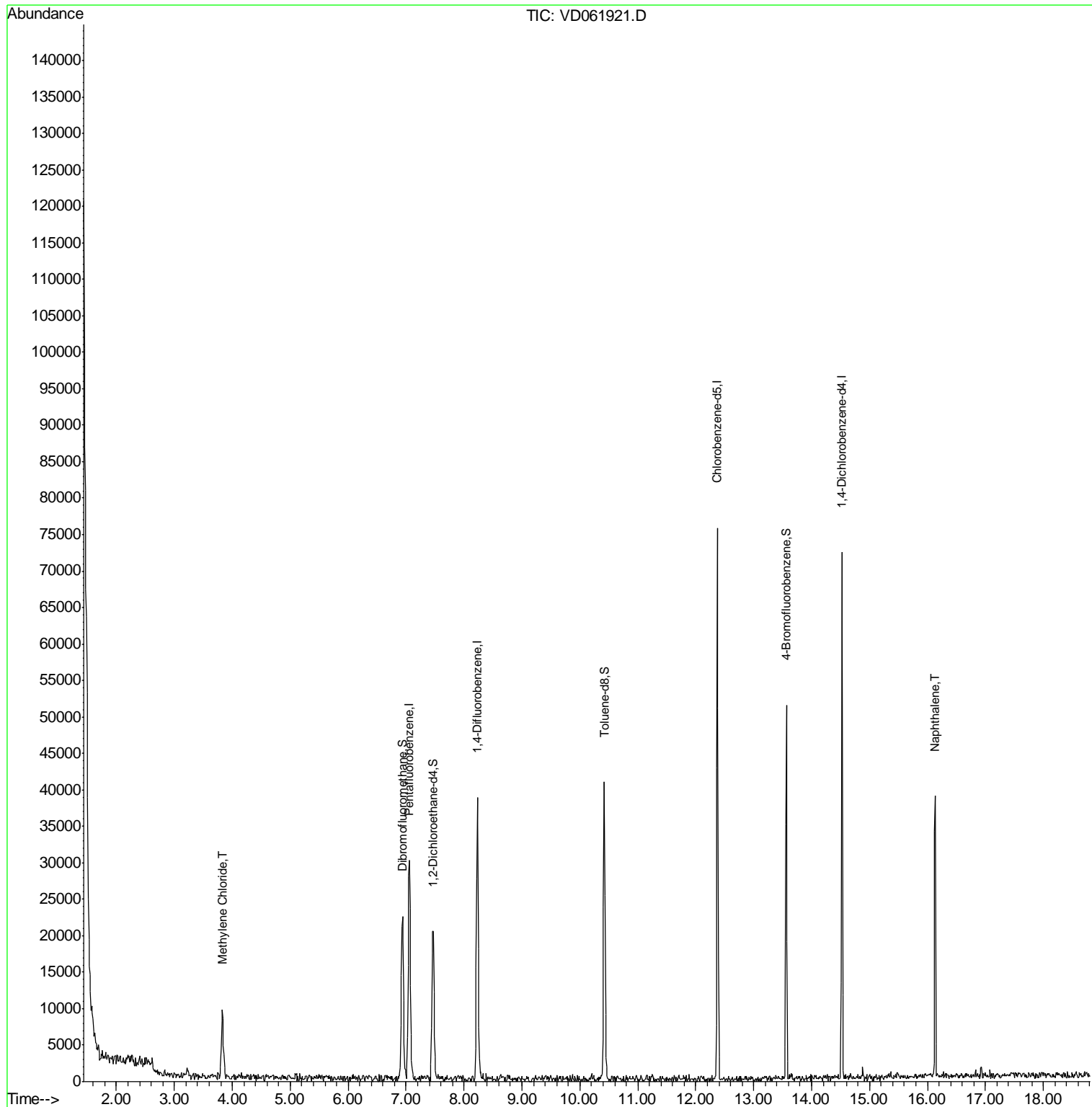
Internal Standards	R.T.	QIon	Response	Conc	Units	Dev(Min)
1) Pentafluorobenzene	7.06	168	31738	50.00	µg/l	0.00
34) 1,4-Difluorobenzene	8.23	114	50178	50.00	µg/l	0.00
63) Chlorobenzene-d5	12.37	117	45530	50.00	µg/l	0.00
72) 1,4-Dichlorobenzene-d4	14.52	152	19609	50.00	µg/l	0.00
System Monitoring Compounds						
33) 1,2-Dichloroethane-d4	7.46	65	21637	81.34	µg/l	0.00
Spiked Amount	50.000		Recovery	=	162.68%	
35) Dibromofluoromethane	6.93	113	22003	58.04	µg/l	0.00
Spiked Amount	50.000		Recovery	=	116.08%	
50) Toluene-d8	10.42	98	37631	41.89	µg/l	0.01
Spiked Amount	50.000		Recovery	=	83.78%	
62) 4-Bromofluorobenzene	13.56	95	15436	42.40	µg/l	0.00
Spiked Amount	50.000		Recovery	=	84.80%	
Target Compounds						
20) Methylene Chloride	3.83	84	6667	17.476	µg/l #	91
95) Naphthalene	16.13	128	27044	60.814	µg/l	97

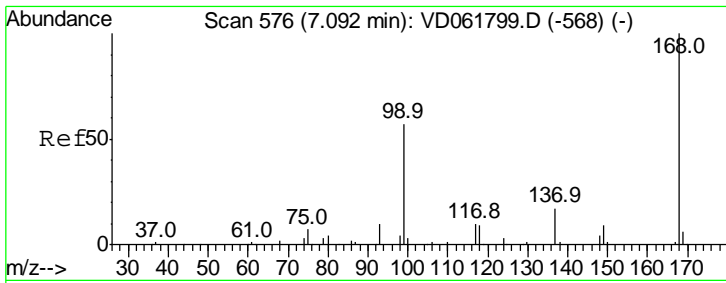
(#) = qualifier out of range (m) = manual integration (+) = signals summed

Data Path : Z:\VOASRV\HPCHEM1\MSVOA D\DATA\VD041919\  
 Data File : VD061921.D  
 Acq On : 19 Apr 2019 20:41  
 Operator : VA/AP  
 Sample : K2413-02  
 Misc : 5.00µ/5ml/MSVOA D/SOIL  
 ALS Vial : 20 Sample Multiplier: 1

Instrument :  
 MSVOA\_D  
 ClientSampleId :  
 NCC-TOPSOIL-CR

Quant Time: Apr 20 00:00:21 2019  
 Quant Method : Z:\VOASRV\HPCHEM1\MSVOA\_D\METHOD\82D041519S.M  
 Quant Title : SW846 8260  
 QLast Update : Thu Apr 18 13:49:04 2019  
 Response via : Initial Calibration

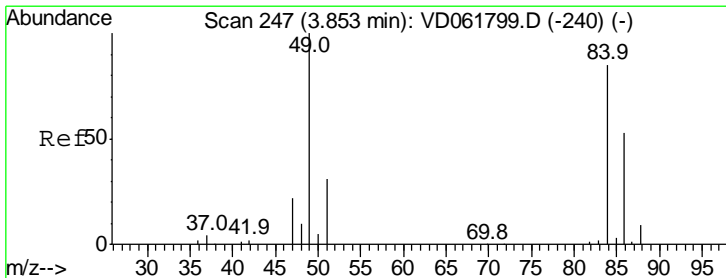
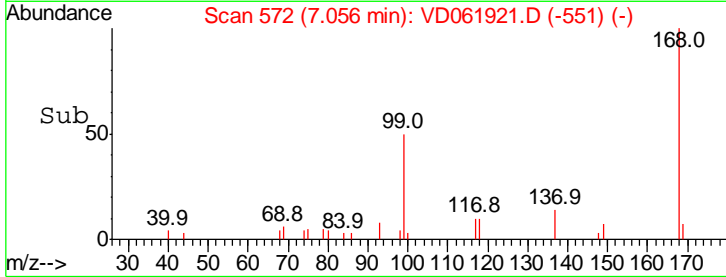
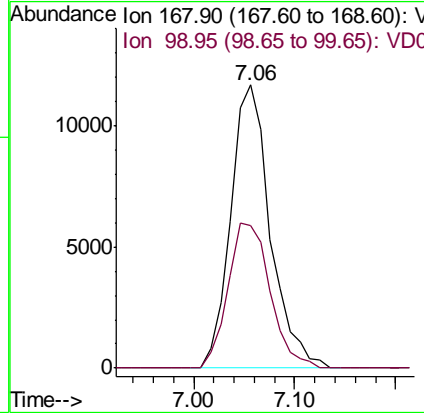
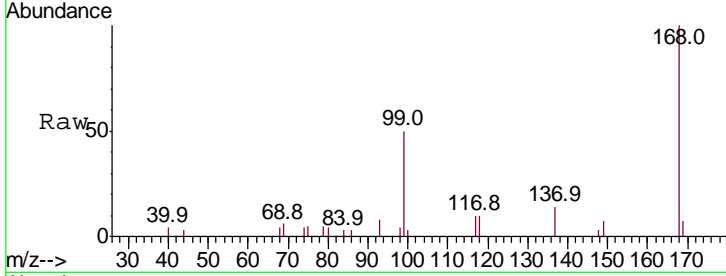




#1  
 Pentafluorobenzene  
 Concen: 50.000 ug/l  
 RT: 7.06 min Scan# 572  
 Delta R.T. 0.00 min  
 Lab File: VD061921.D  
 Acq: 19 Apr 2019 20:41

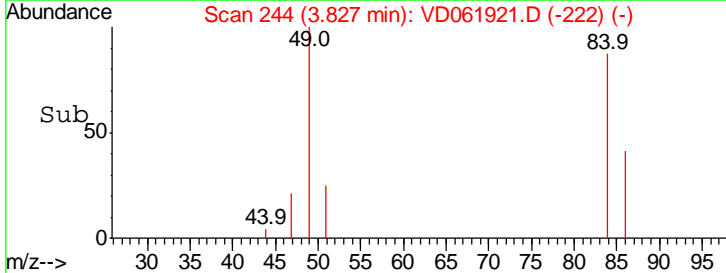
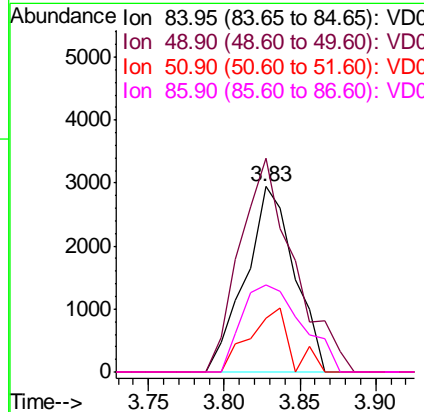
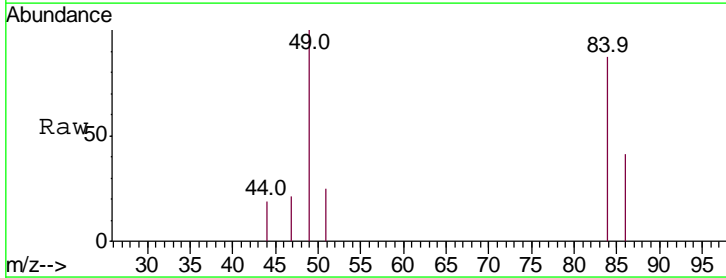
Instrument : MSVOA\_D  
 ClientSampleId : NCC-TOPSOIL-CR

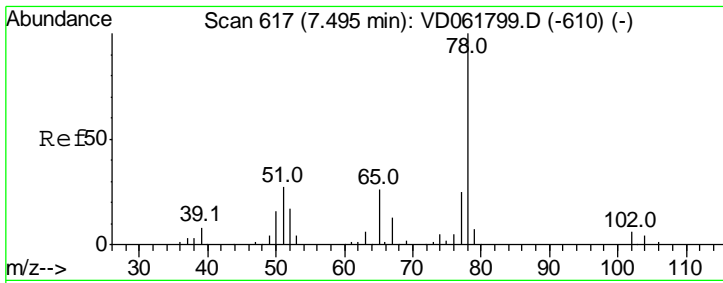
Tgt Ion	Resp	Lower	Upper
168	100		
99	50.3	46.5	69.7



#20  
 Methylene Chloride  
 Concen: 17.476 ug/l  
 RT: 3.83 min Scan# 244  
 Delta R.T. 0.01 min  
 Lab File: VD061921.D  
 Acq: 19 Apr 2019 20:41

Tgt Ion	Resp	Lower	Upper
84	100		
49	115.2	94.0	141.0
51	29.0	29.0	43.4
86	47.0	49.8	74.6#

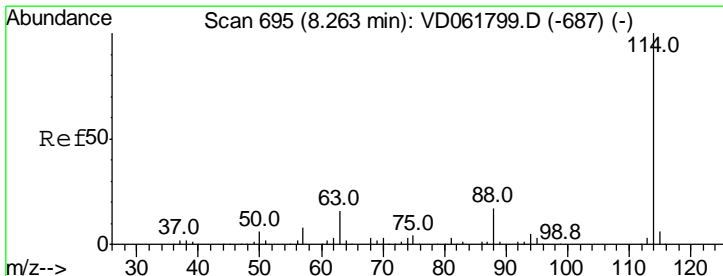
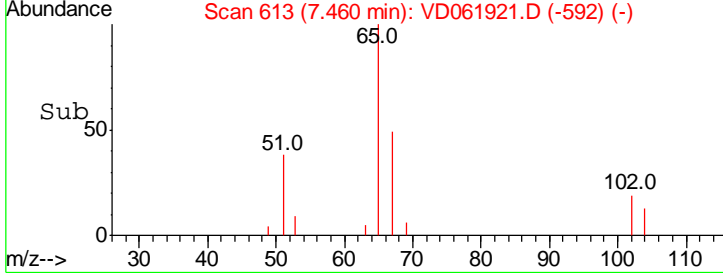
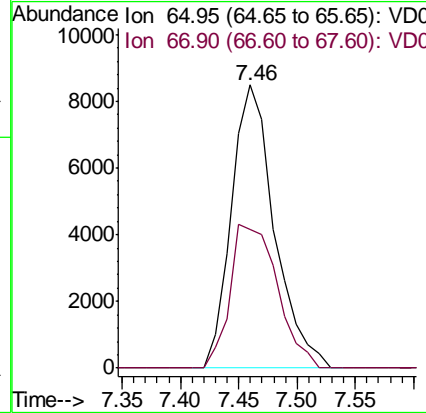
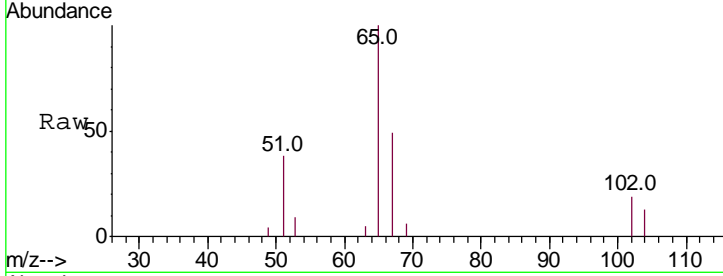




#33  
 1,2-Dichloroethane-d4  
 Concen: 81.344 ug/l  
 RT: 7.46 min Scan# 613  
 Delta R.T. 0.00 min  
 Lab File: VD061921.D  
 Acq: 19 Apr 2019 20:41

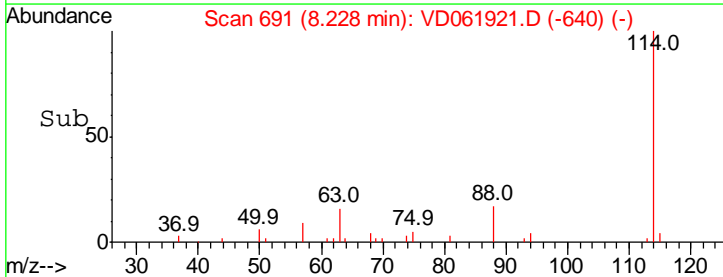
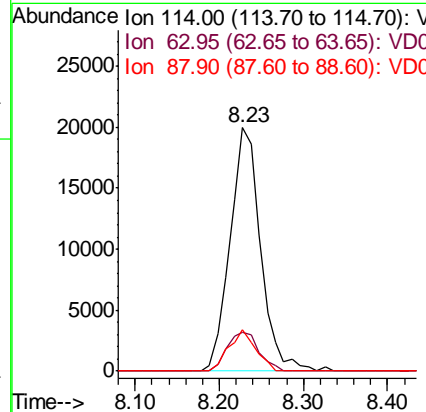
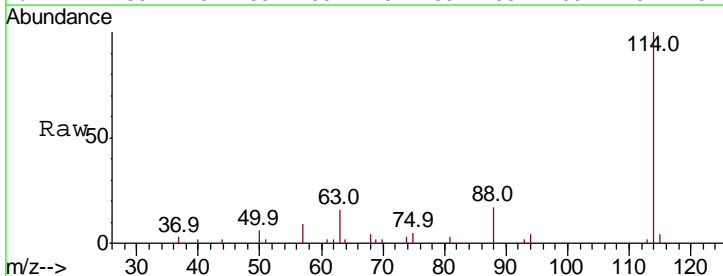
Instrument :  
 MSVOA\_D  
 ClientSampled :  
 NCC-TOPSOIL-CR

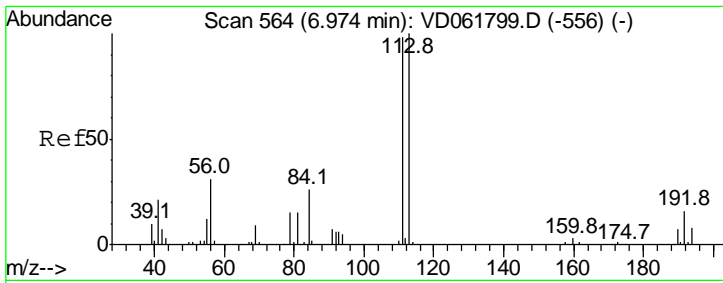
Tgt Ion	Resp	Lower	Upper
65	100		
67	49.2	0.0	98.0



#34  
 1,4-Difluorobenzene  
 Concen: 50.000 ug/l  
 RT: 8.23 min Scan# 691  
 Delta R.T. 0.00 min  
 Lab File: VD061921.D  
 Acq: 19 Apr 2019 20:41

Tgt Ion	Resp	Lower	Upper
114	100		
63	16.0	0.0	32.4
88	17.1	0.0	33.6

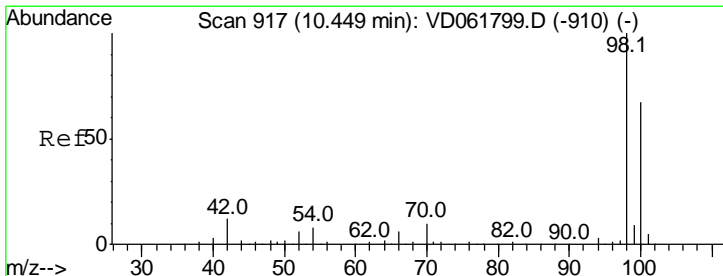
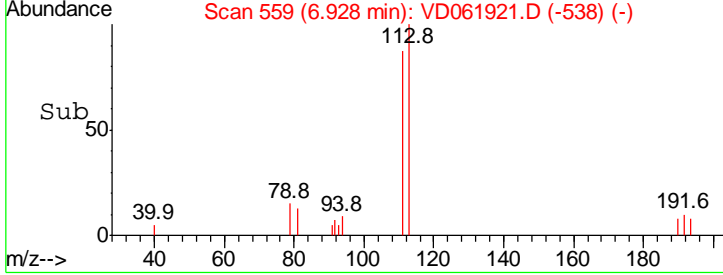
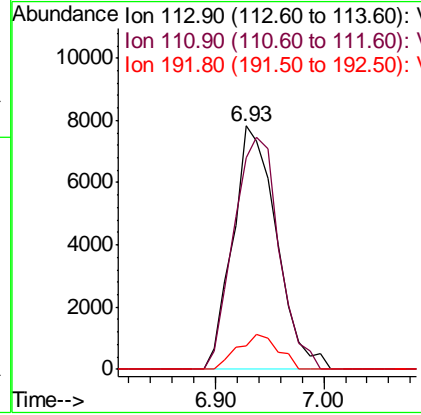
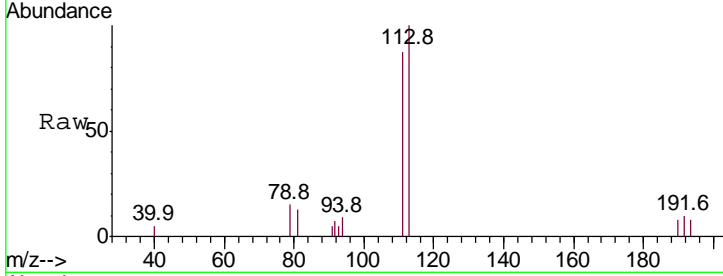




#35  
 Dibromofluoromethane  
 Concen: 58.041 ug/l  
 RT: 6.93 min Scan# 559  
 Delta R.T. 0.00 min  
 Lab File: VD061921.D  
 Acq: 19 Apr 2019 20:41

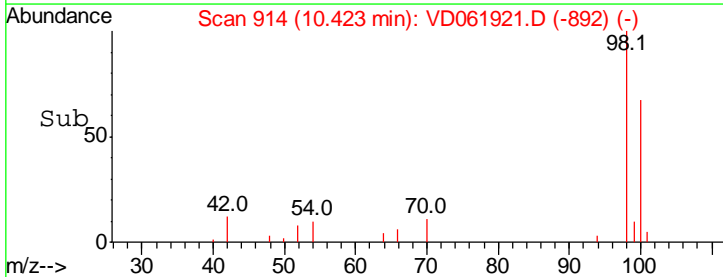
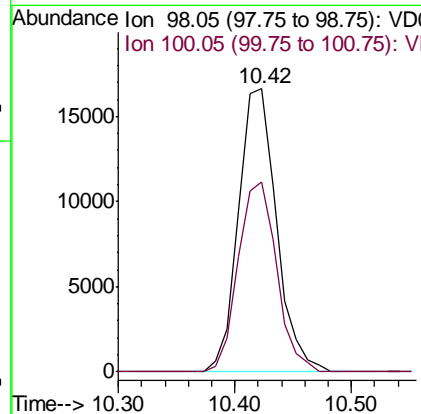
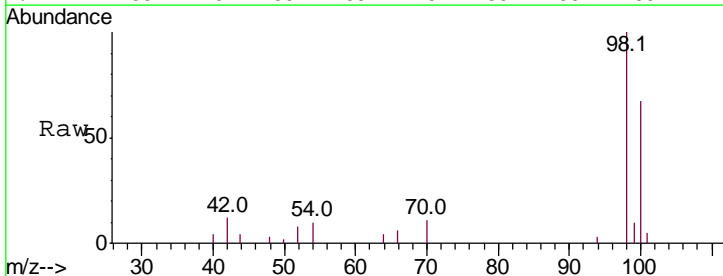
Instrument : MSVOA\_D  
 ClientSampleId : NCC-TOPSOIL-CR

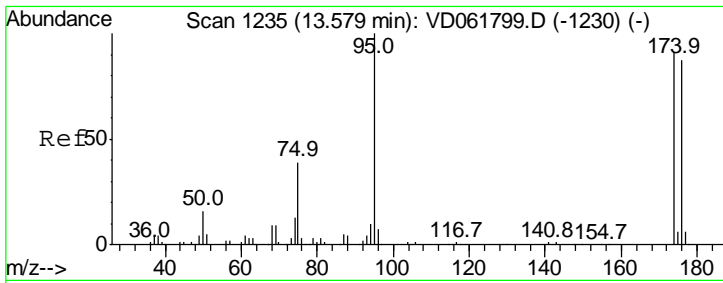
Tgt Ion	Resp	Lower	Upper
113	100		
111	86.8	78.5	117.7
192	9.8	13.0	19.4#



#50  
 Toluene-d8  
 Concen: 41.894 ug/l  
 RT: 10.42 min Scan# 914  
 Delta R.T. 0.01 min  
 Lab File: VD061921.D  
 Acq: 19 Apr 2019 20:41

Tgt Ion	Resp	Lower	Upper
98	100		
100	67.2	53.8	80.8

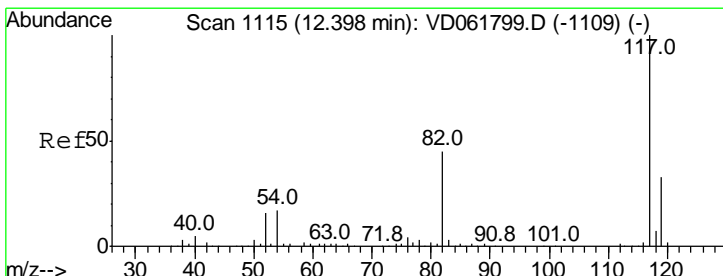
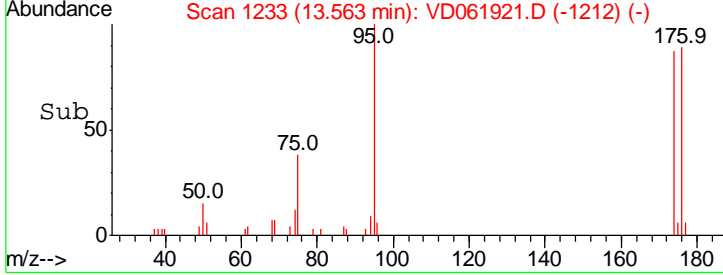
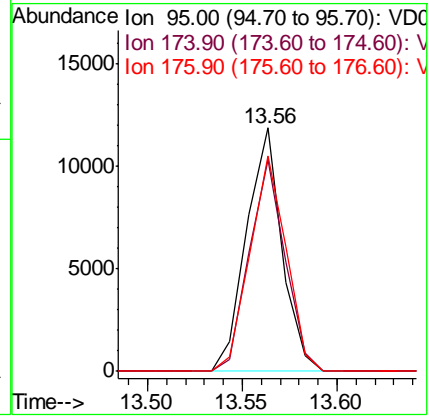
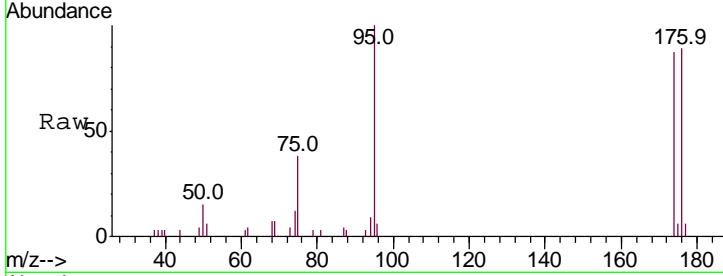




#62  
 4-Bromofluorobenzene  
 Concen: 42.398 ug/l  
 RT: 13.56 min Scan# 1233  
 Delta R.T. 0.00 min  
 Lab File: VD061921.D  
 Acq: 19 Apr 2019 20:41

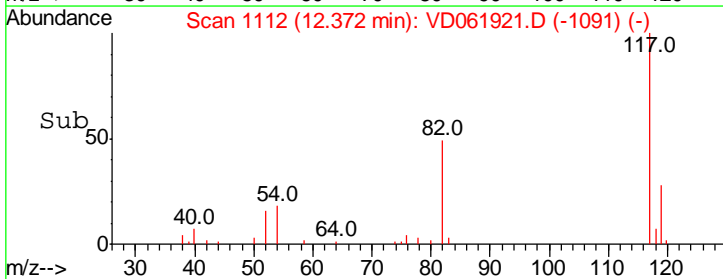
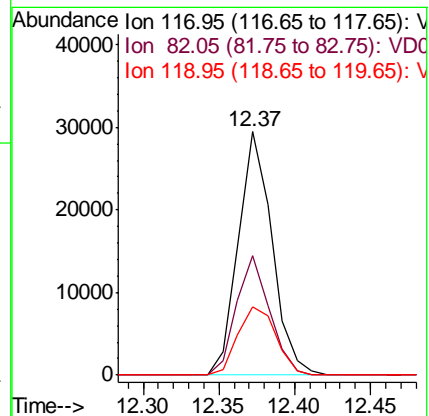
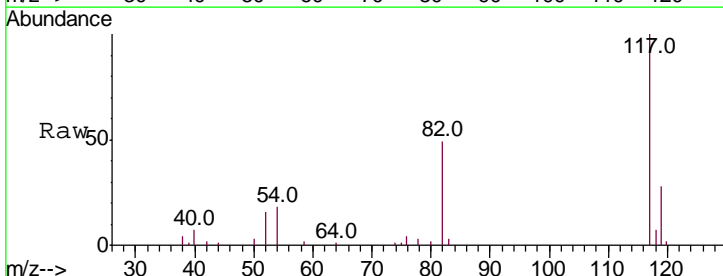
Instrument : MSVOA\_D  
 ClientSampleId : NCC-TOPSOIL-CR

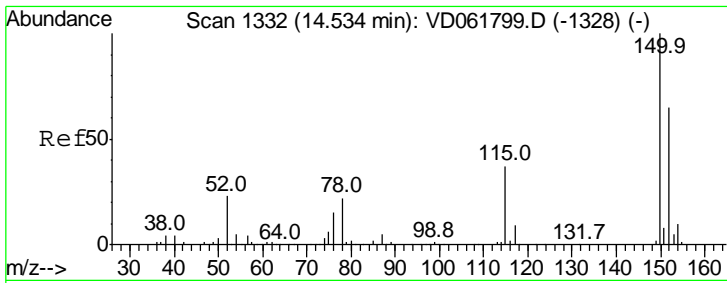
Tgt Ion	Resp	Lower	Upper
95	15436		
174	86.9	0.0	181.8
176	88.7	0.0	174.4



#63  
 Chlorobenzene-d5  
 Concen: 50.000 ug/l  
 RT: 12.37 min Scan# 1112  
 Delta R.T. 0.00 min  
 Lab File: VD061921.D  
 Acq: 19 Apr 2019 20:41

Tgt Ion	Resp	Lower	Upper
117	45530		
82	49.0	36.2	54.2
119	28.0	26.2	39.4



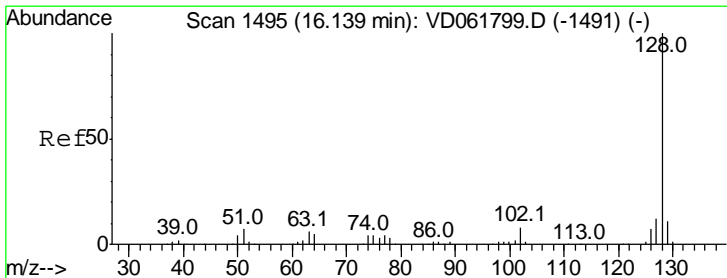
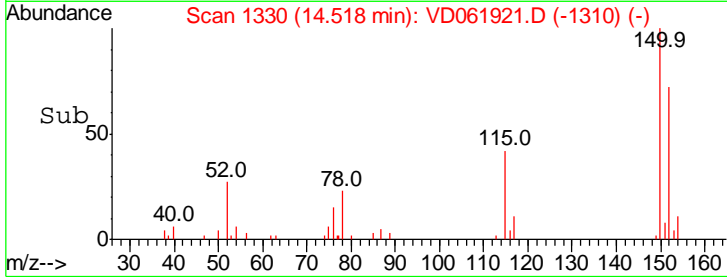
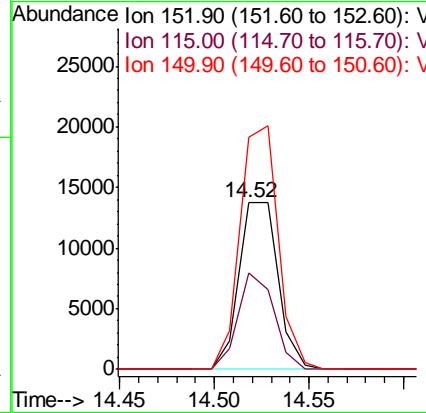
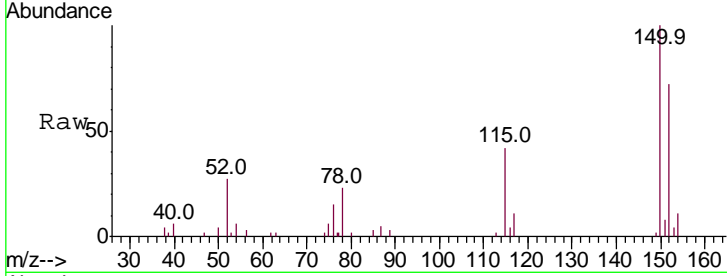


#72  
 1,4-Dichlorobenzene-d4  
 Concen: 50.000 ug/l  
 RT: 14.52 min Scan# 1330  
 Delta R.T. -0.01 min  
 Lab File: VD061921.D  
 Acq: 19 Apr 2019 20:41

Instrument :  
 MSVOA\_D  
 ClientSampled :  
 NCC-TOPSOIL-CR

Tot Ion:152 Resp: 19609

Ion	Ratio	Lower	Upper
152	100		
115	58.2	30.9	92.7
150	139.6	0.0	314.8



#95  
 Naphthalene  
 Concen: 60.814 ug/l  
 RT: 16.13 min Scan# 1494  
 Delta R.T. 0.00 min  
 Lab File: VD061921.D  
 Acq: 19 Apr 2019 20:41

Tgt Ion:128 Resp: 27044

Ion	Ratio	Lower	Upper
128	100		
127	10.5	9.8	14.8
129	11.7	8.8	13.2

