

Data Path : Z:\voasrv\HPCHEM1\MSVOA_D\Data\VD042122\
 Data File : VD072672.D
 Acq On : 21 Apr 2022 15:49
 Operator : VA/SY
 Sample : VIBLK
 Misc : 5.00G/5.00ml/MSVOA_D/SOIL
 ALS Vial : 14 Sample Multiplier: 1

Instrument :
 MSVOA_D
 ClientSampleId :
 VIBLK

Quant Time: Apr 22 03:41:10 2022
 Quant Method : Z:\voasrv\HPCHEM1\MSVOA_D\Method\82D032922S.M
 Quant Title : SW846 8260
 QLast Update : Wed Mar 30 02:44:36 2022
 Response via : Initial Calibration

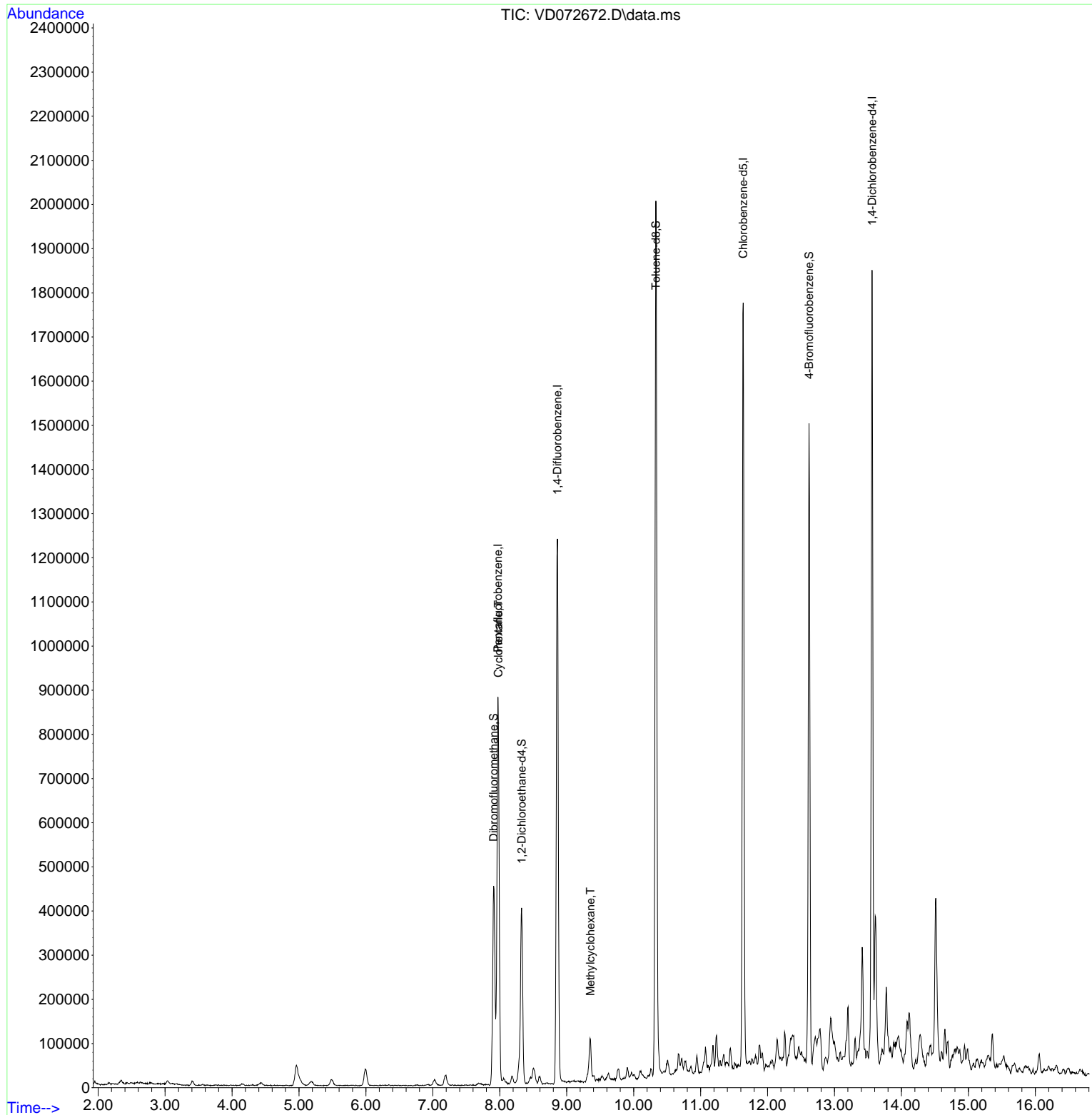
Compound	R.T.	QIon	Response	Conc	Units	Dev(Min)
Internal Standards						
1) Pentafluorobenzene	7.973	168	626731	50.000	ug/l	0.00
34) 1,4-Difluorobenzene	8.861	114	1083629	50.000	ug/l	0.00
63) Chlorobenzene-d5	11.638	117	1027973	50.000	ug/l	0.00
72) 1,4-Dichlorobenzene-d4	13.561	152	474332	50.000	ug/l	0.00
System Monitoring Compounds						
33) 1,2-Dichloroethane-d4	8.326	65	312681	41.242	ug/l	0.00
Spiked Amount	50.000	Range	50 - 163	Recovery	=	82.480%
35) Dibromofluoromethane	7.908	113	333949	39.655	ug/l	0.00
Spiked Amount	50.000	Range	54 - 147	Recovery	=	79.320%
50) Toluene-d8	10.332	98	1338279	45.717	ug/l	0.00
Spiked Amount	50.000	Range	49 - 140	Recovery	=	91.440%
62) 4-Bromofluorobenzene	12.620	95	476247	41.658	ug/l	0.00
Spiked Amount	50.000	Range	25 - 144	Recovery	=	83.320%
Target Compounds						
					Qvalue	
31) Cyclohexane	7.979	56	22624	2.282	ug/l #	30
39) Methylcyclohexane	9.355	83	41619	6.006	ug/l	91

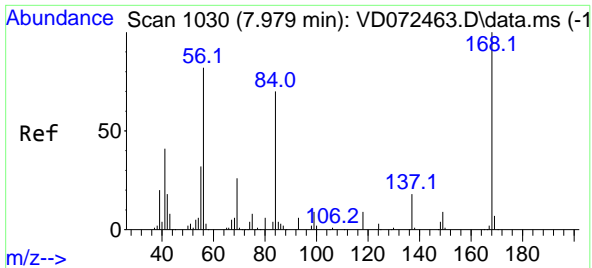
(#) = qualifier out of range (m) = manual integration (+) = signals summed

Data Path : Z:\voasrv\HPCHEM1\MSVOA_D\Data\VD042122\
 Data File : VD072672.D
 Acq On : 21 Apr 2022 15:49
 Operator : VA/SY
 Sample : VIBLK
 Misc : 5.00G/5.00ml/MSVOA_D/SOIL
 ALS Vial : 14 Sample Multiplier: 1

Instrument :
 MSVOA_D
 ClientSampleId :
 VIBLK

Quant Time: Apr 22 03:41:10 2022
 Quant Method : Z:\voasrv\HPCHEM1\MSVOA_D\Method\82D032922S.M
 Quant Title : SW846 8260
 QLast Update : Wed Mar 30 02:44:36 2022
 Response via : Initial Calibration

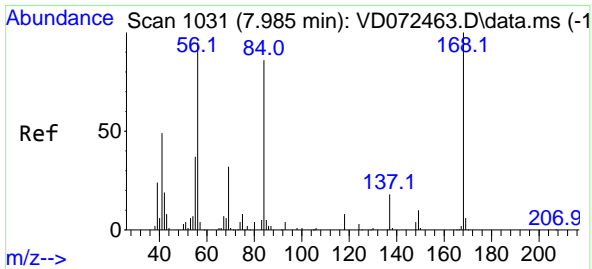
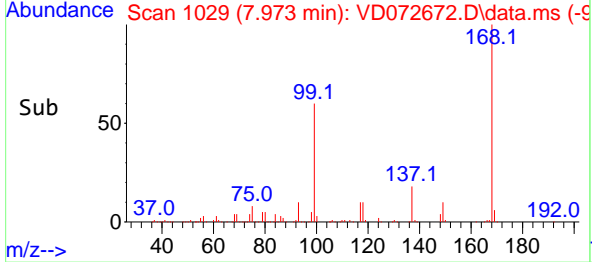
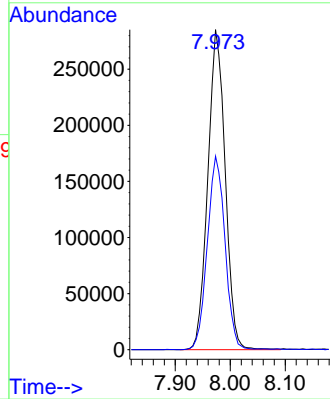
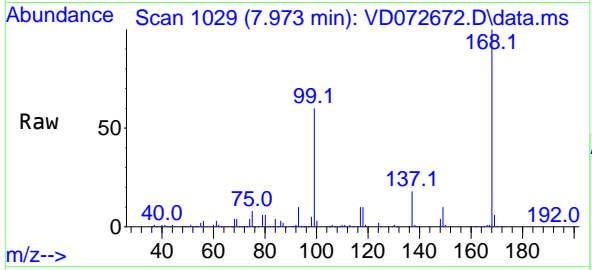




#1
 Pentafluorobenzene
 Concen: 50.000 ug/l
 RT: 7.973 min Scan# 1029
 Delta R.T. -0.006 min
 Lab File: VD072672.D
 Acq: 21 Apr 2022 15:49

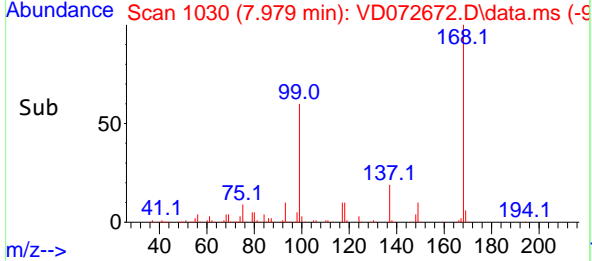
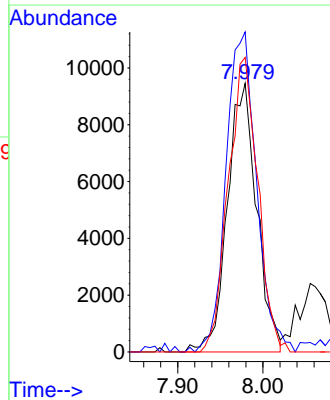
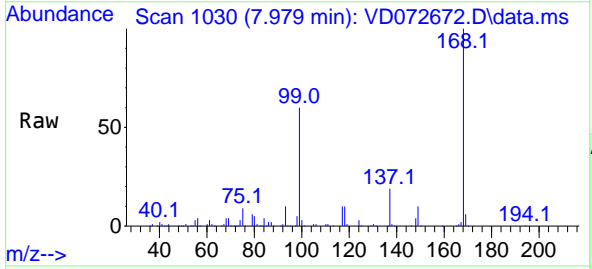
Instrument : MSVOA_D
 ClientSampleId : VIBLK

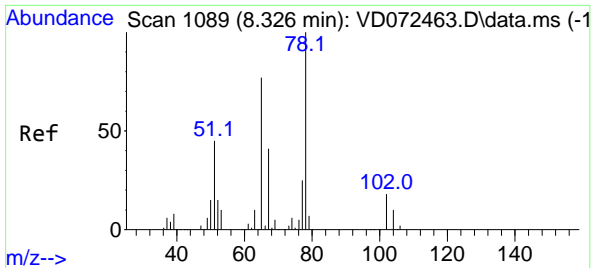
Tgt Ion:168 Resp: 626731
 Ion Ratio Lower Upper
 168 100
 99 60.5 49.8 74.6



#31
 Cyclohexane
 Concen: 2.282 ug/l
 RT: 7.979 min Scan# 1030
 Delta R.T. -0.006 min
 Lab File: VD072672.D
 Acq: 21 Apr 2022 15:49

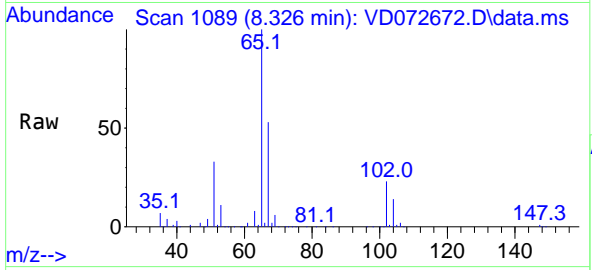
Tgt Ion: 56 Resp: 22624
 Ion Ratio Lower Upper
 56 100
 69 119.1 25.4 38.2#
 84 109.7 63.0 94.4#



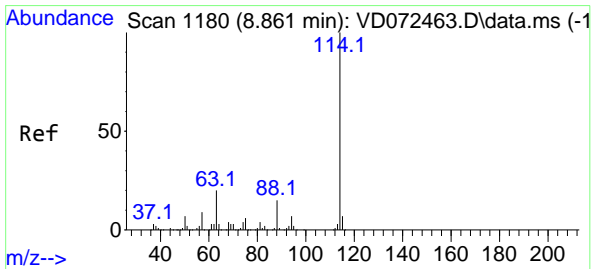
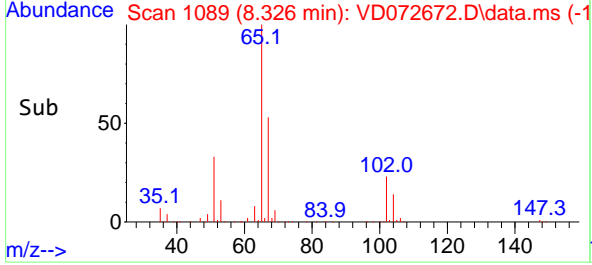
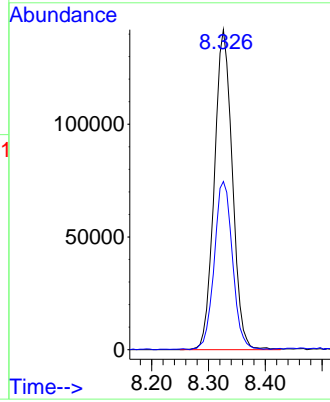


#33
 1,2-Dichloroethane-d4
 Concen: 41.242 ug/l
 RT: 8.326 min Scan# 1089
 Delta R.T. 0.000 min
 Lab File: VD072672.D
 Acq: 21 Apr 2022 15:49

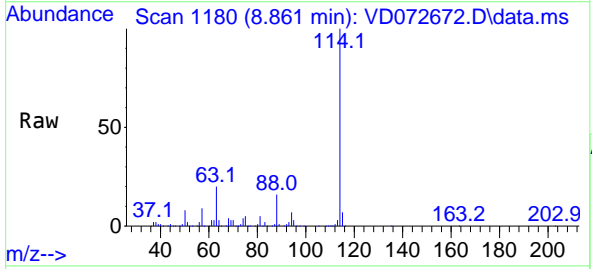
Instrument : MSVOA_D
 ClientSampleId : VIBLK



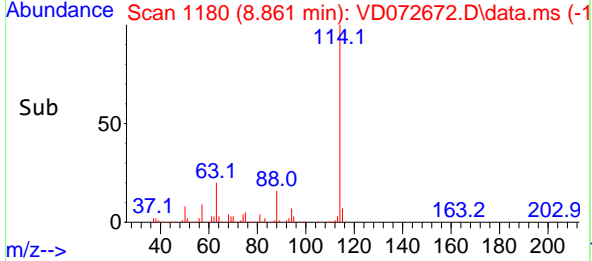
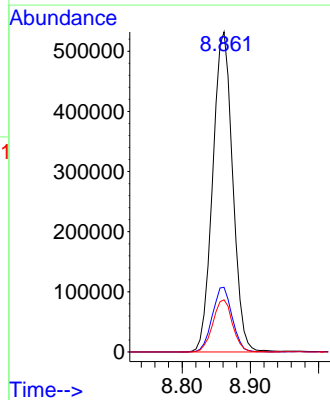
Tgt Ion: 65 Resp: 312681
 Ion Ratio Lower Upper
 65 100
 67 53.2 0.0 101.4

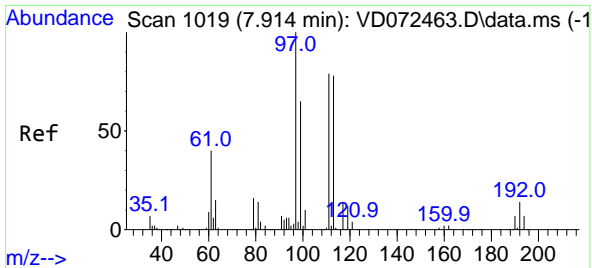


#34
 1,4-Difluorobenzene
 Concen: 50.000 ug/l
 RT: 8.861 min Scan# 1180
 Delta R.T. 0.000 min
 Lab File: VD072672.D
 Acq: 21 Apr 2022 15:49



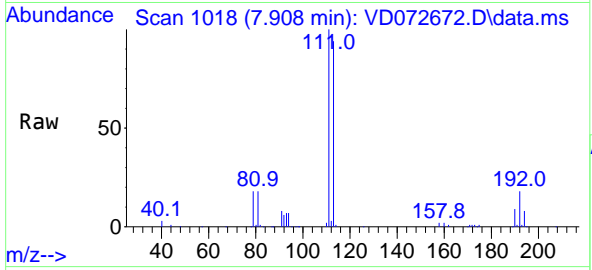
Tgt Ion: 114 Resp: 1083629
 Ion Ratio Lower Upper
 114 100
 63 20.2 0.0 46.6
 88 16.3 0.0 33.2





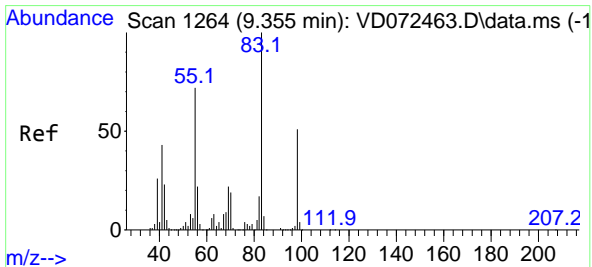
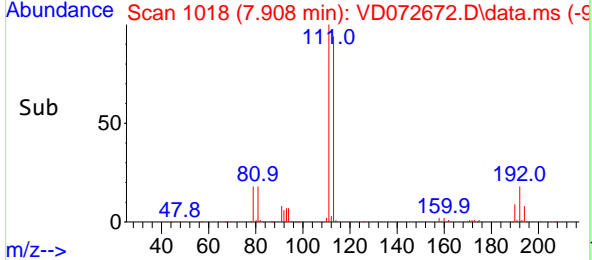
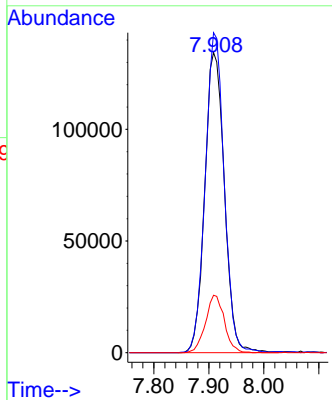
#35
 Dibromofluoromethane
 Concen: 39.655 ug/l
 RT: 7.908 min Scan# 1018
 Delta R.T. -0.006 min
 Lab File: VD072672.D
 Acq: 21 Apr 2022 15:49

Instrument : MSVOA_D
 ClientSampleId : VIBLK



Tgt Ion: 113 Resp: 333949

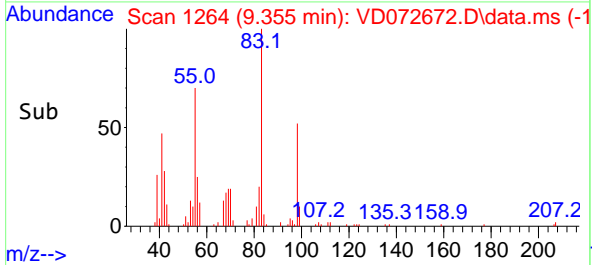
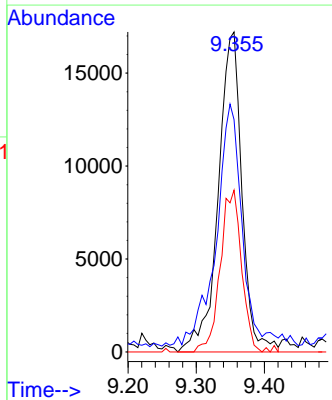
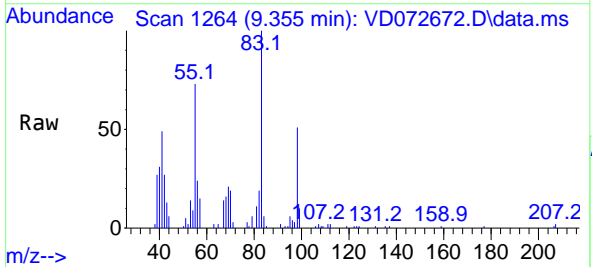
Ion	Ratio	Lower	Upper
113	100		
111	102.8	83.8	125.6
192	18.3	14.6	21.8

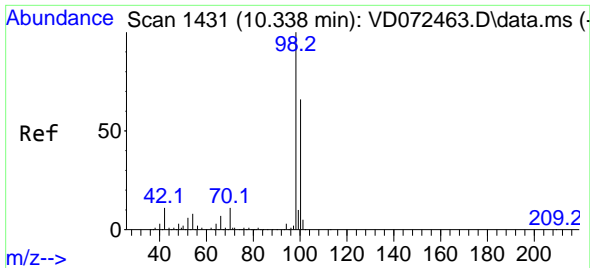


#39
 Methylcyclohexane
 Concen: 6.006 ug/l
 RT: 9.355 min Scan# 1264
 Delta R.T. 0.000 min
 Lab File: VD072672.D
 Acq: 21 Apr 2022 15:49

Tgt Ion: 83 Resp: 41619

Ion	Ratio	Lower	Upper
83	100		
55	68.3	63.2	94.8
98	50.6	38.2	57.4

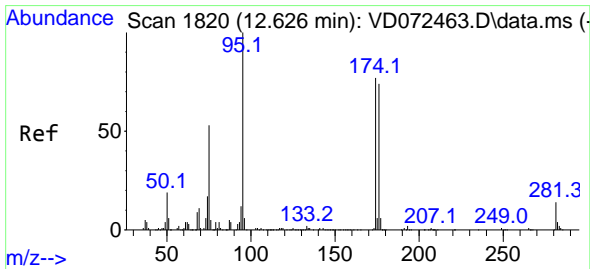
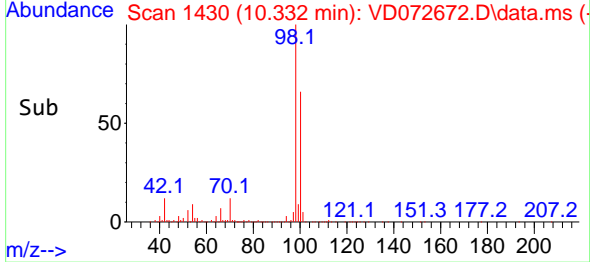
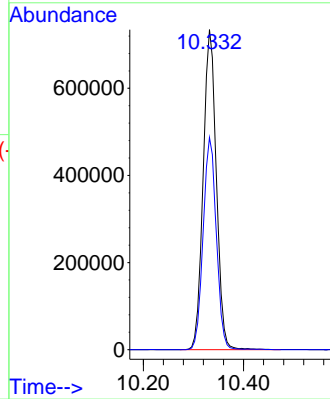
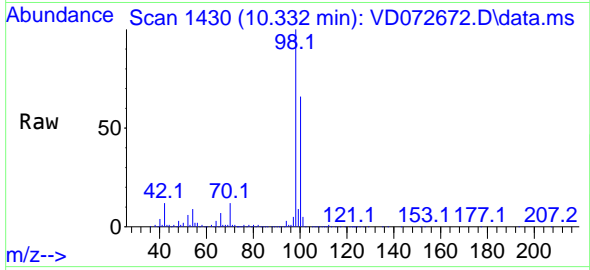




#50
 Toluene-d8
 Concen: 45.717 ug/l
 RT: 10.332 min Scan# 1430
 Delta R.T. -0.006 min
 Lab File: VD072672.D
 Acq: 21 Apr 2022 15:49

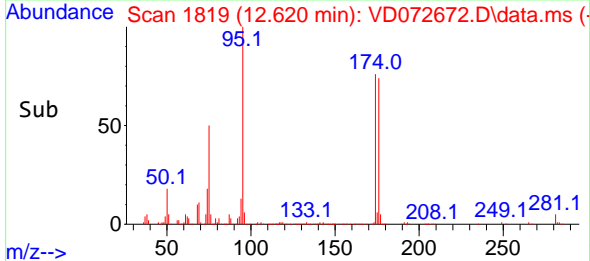
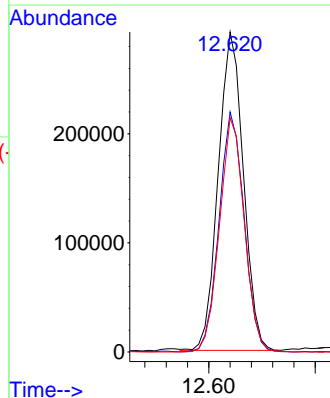
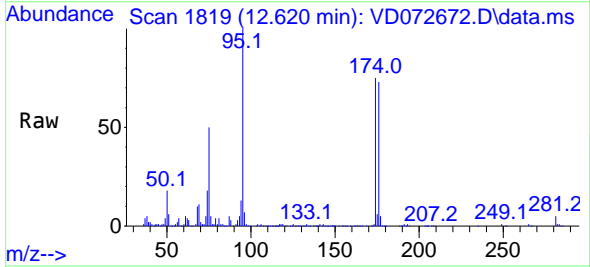
Instrument : MSVOA_D
 ClientSampleId : VIBLK

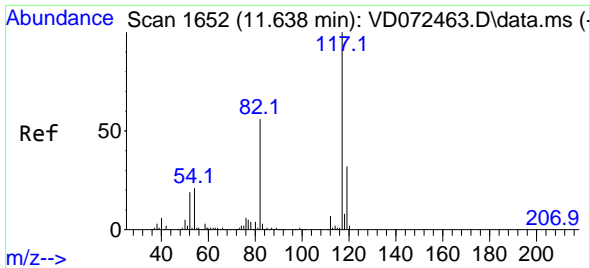
Tgt Ion: 98 Resp: 1338279
 Ion Ratio Lower Upper
 98 100
 100 66.3 52.4 78.6



#62
 4-Bromofluorobenzene
 Concen: 41.658 ug/l
 RT: 12.620 min Scan# 1819
 Delta R.T. -0.006 min
 Lab File: VD072672.D
 Acq: 21 Apr 2022 15:49

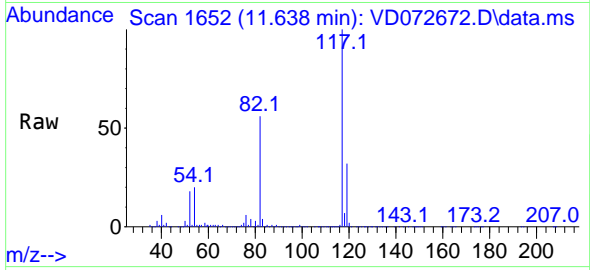
Tgt Ion: 95 Resp: 476247
 Ion Ratio Lower Upper
 95 100
 174 75.3 0.0 152.8
 176 72.6 0.0 145.4



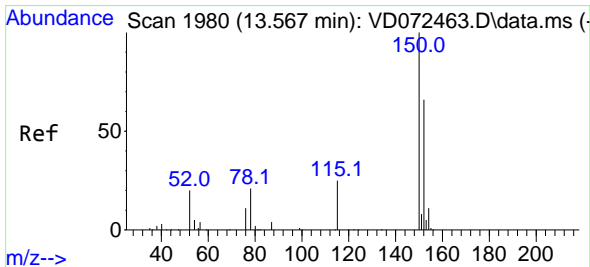
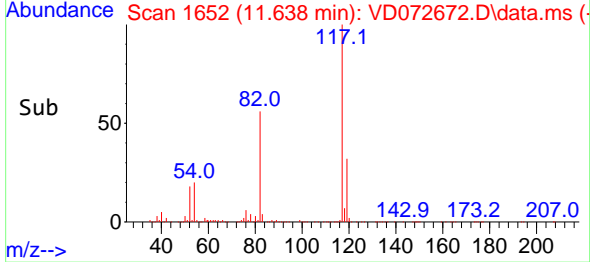
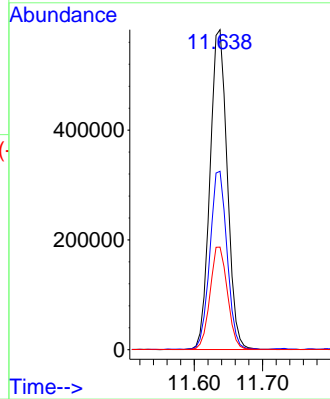


#63
 Chlorobenzene-d5
 Concen: 50.000 ug/l
 RT: 11.638 min Scan# 1
 Delta R.T. 0.000 min
 Lab File: VD072672.D
 Acq: 21 Apr 2022 15:49

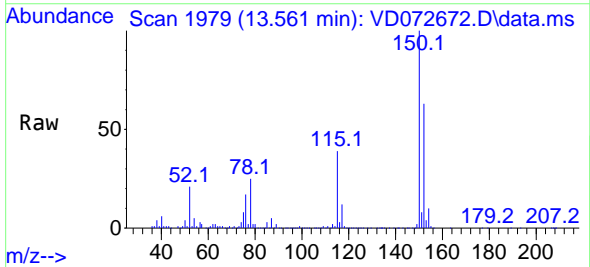
Instrument :
 MSVOA_D
 ClientSampleId :
 VIBLK



Tgt Ion:117 Resp: 1027973
 Ion Ratio Lower Upper
 117 100
 82 55.6 45.3 67.9
 119 32.0 26.6 40.0



#72
 1,4-Dichlorobenzene-d4
 Concen: 50.000 ug/l
 RT: 13.561 min Scan# 1979
 Delta R.T. -0.006 min
 Lab File: VD072672.D
 Acq: 21 Apr 2022 15:49



Tgt Ion:152 Resp: 474332
 Ion Ratio Lower Upper
 152 100
 115 61.1 31.3 93.8
 150 154.9 0.0 348.6

