

Data Path : Z:\voasrv\HPCHEM1\MSVOA\_D\Data\VD042122\  
 Data File : VD072679.D  
 Acq On : 21 Apr 2022 19:09  
 Operator : VA/SY  
 Sample : N2525-05  
 Misc : 5.05G/5.00ml/MSVOA\_D/SOIL  
 ALS Vial : 21 Sample Multiplier: 1

Instrument :  
 MSVOA\_D  
 ClientSampleId :  
 HR-04-042122

Quant Time: Apr 22 03:42:45 2022  
 Quant Method : Z:\voasrv\HPCHEM1\MSVOA\_D\Method\82D032922S.M  
 Quant Title : SW846 8260  
 QLast Update : Wed Mar 30 02:44:36 2022  
 Response via : Initial Calibration

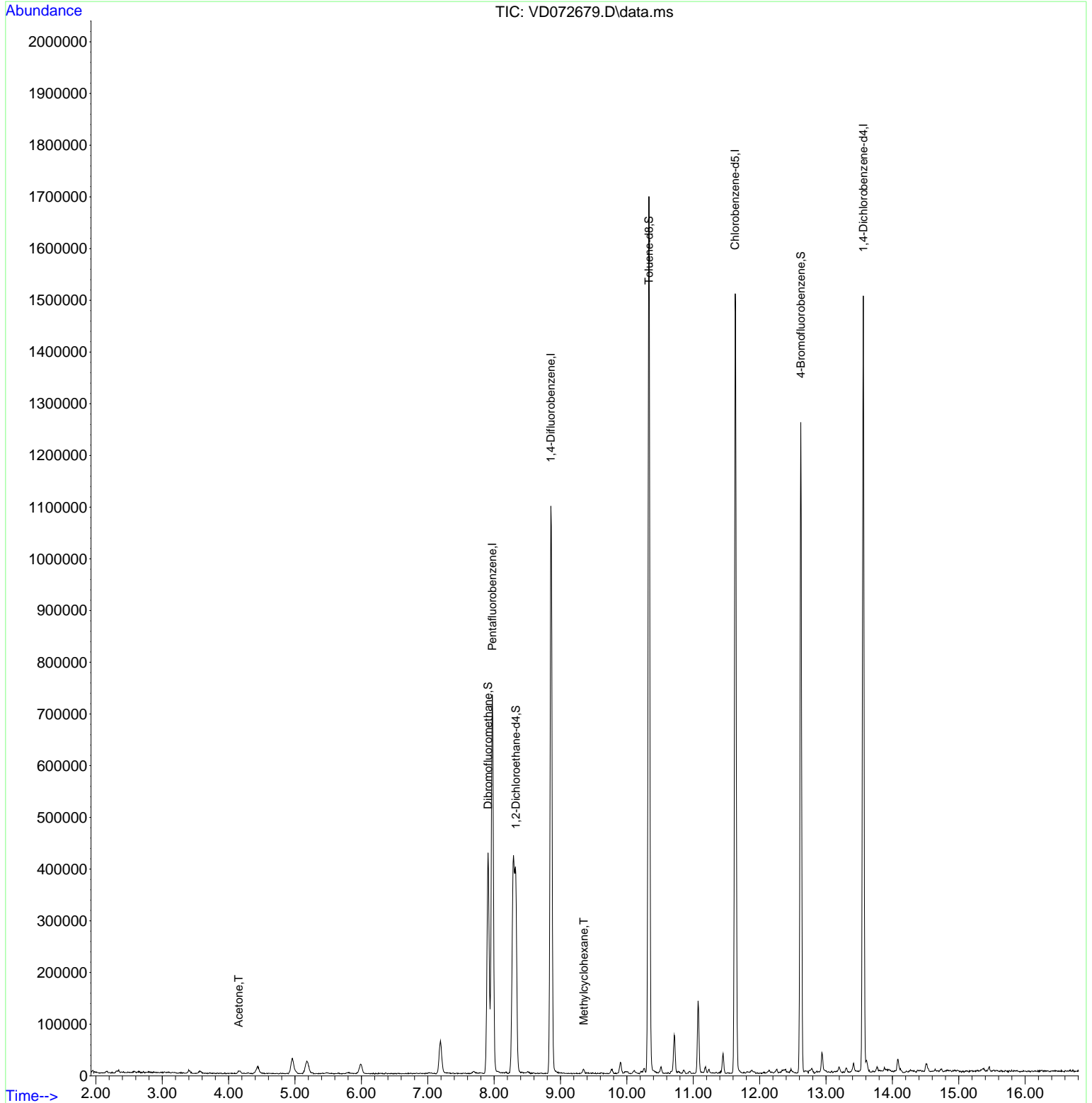
Compound	R.T.	QIon	Response	Conc	Units	Dev(Min)
-----						
Internal Standards						
1) Pentafluorobenzene	7.973	168	540415	50.000	ug/l	0.00
34) 1,4-Difluorobenzene	8.856	114	968411	50.000	ug/l	0.00
63) Chlorobenzene-d5	11.632	117	896514	50.000	ug/l	0.00
72) 1,4-Dichlorobenzene-d4	13.561	152	394847	50.000	ug/l	0.00
System Monitoring Compounds						
33) 1,2-Dichloroethane-d4	8.326	65	286629	43.845	ug/l	0.00
Spiked Amount	50.000	Range	50 - 163	Recovery	=	87.680%
35) Dibromofluoromethane	7.909	113	302687	40.219	ug/l	0.00
Spiked Amount	50.000	Range	54 - 147	Recovery	=	80.440%
50) Toluene-d8	10.332	98	1149401	43.936	ug/l	0.00
Spiked Amount	50.000	Range	49 - 140	Recovery	=	87.880%
62) 4-Bromofluorobenzene	12.620	95	396353	38.794	ug/l	0.00
Spiked Amount	50.000	Range	25 - 144	Recovery	=	77.580%
Target Compounds						
					Qvalue	
16) Acetone	4.150	43	9481	7.778	ug/l	94
39) Methylcyclohexane	9.350	83	3072	3.135	ug/l #	85
-----						

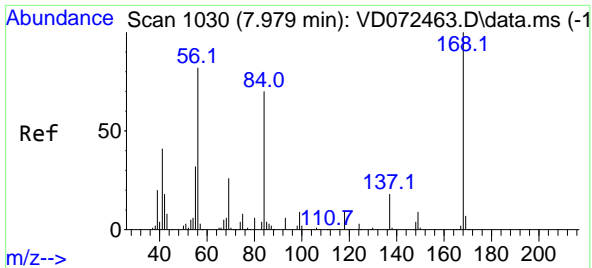
(#) = qualifier out of range (m) = manual integration (+) = signals summed

Data Path : Z:\voasrv\HPCHEM1\MSVOA\_D\Data\VD042122\  
 Data File : VD072679.D  
 Acq On : 21 Apr 2022 19:09  
 Operator : VA/SY  
 Sample : N2525-05  
 Misc : 5.05G/5.00ml/MSVOA\_D/SOIL  
 ALS Vial : 21 Sample Multiplier: 1

Instrument :  
 MSVOA\_D  
 ClientSampleId :  
 HR-04-042122

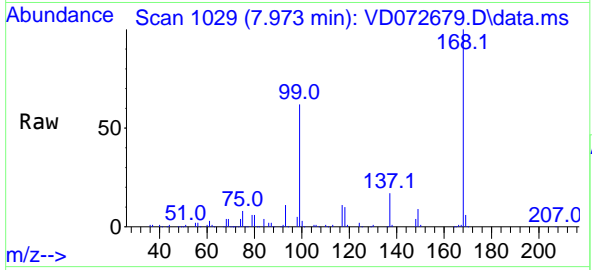
Quant Time: Apr 22 03:42:45 2022  
 Quant Method : Z:\voasrv\HPCHEM1\MSVOA\_D\Method\82D032922S.M  
 Quant Title : SW846 8260  
 QLast Update : Wed Mar 30 02:44:36 2022  
 Response via : Initial Calibration



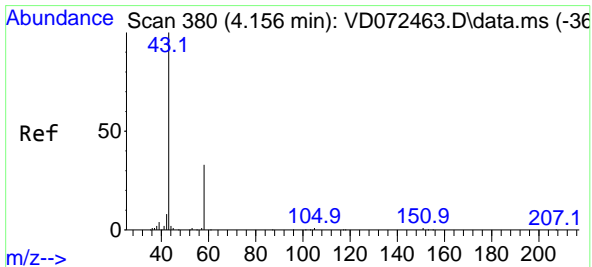
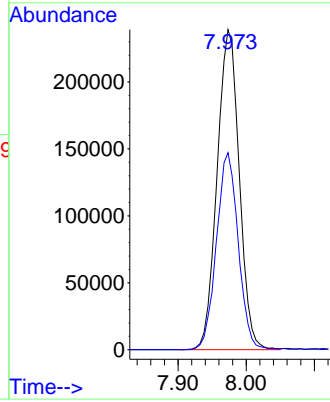
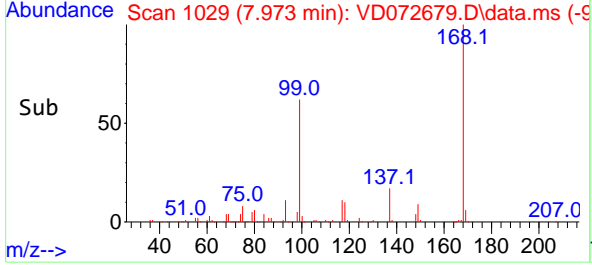


#1  
 Pentafluorobenzene  
 Concen: 50.000 ug/l  
 RT: 7.973 min Scan# 1030  
 Delta R.T. -0.006 min  
 Lab File: VD072679.D  
 Acq: 21 Apr 2022 19:09

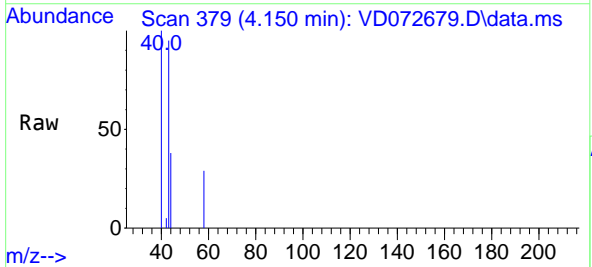
Instrument : MSVOA\_D  
 ClientSampleId : HR-04-042122



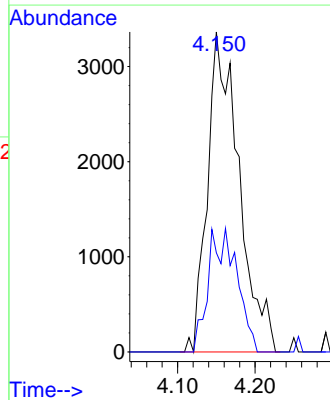
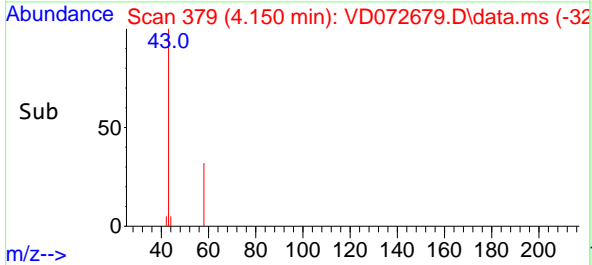
Tgt Ion:168 Resp: 540415  
 Ion Ratio Lower Upper  
 168 100  
 99 61.6 49.8 74.6

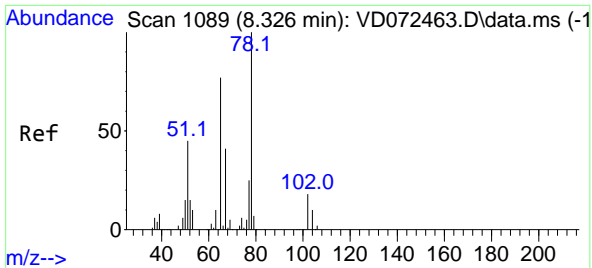


#16  
 Acetone  
 Concen: 7.778 ug/l  
 RT: 4.150 min Scan# 379  
 Delta R.T. -0.006 min  
 Lab File: VD072679.D  
 Acq: 21 Apr 2022 19:09



Tgt Ion: 43 Resp: 9481  
 Ion Ratio Lower Upper  
 43 100  
 58 31.0 22.1 33.1





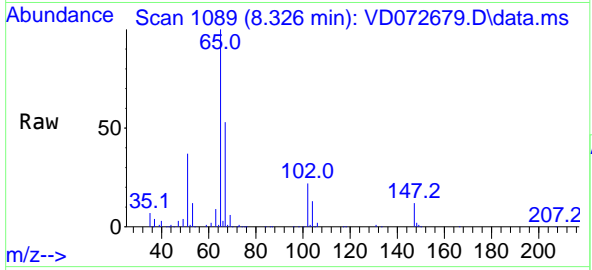
#33  
 1,2-Dichloroethane-d4  
 Concen: 43.845 ug/l  
 RT: 8.326 min Scan# 1107  
 Delta R.T. 0.000 min  
 Lab File: VD072679.D  
 Acq: 21 Apr 2022 19:09

Instrument :

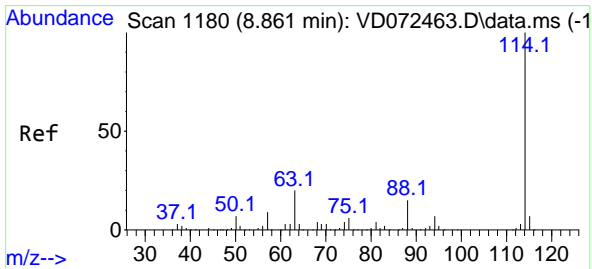
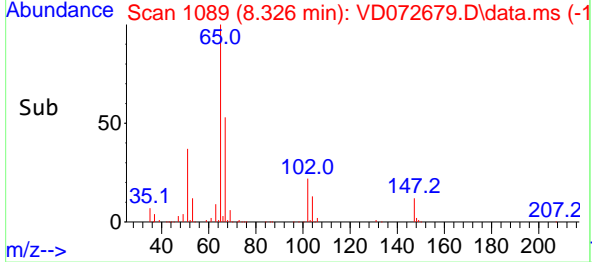
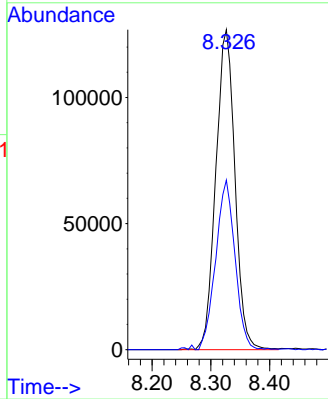
MSVOA\_D

ClientSampleId :

HR-04-042122

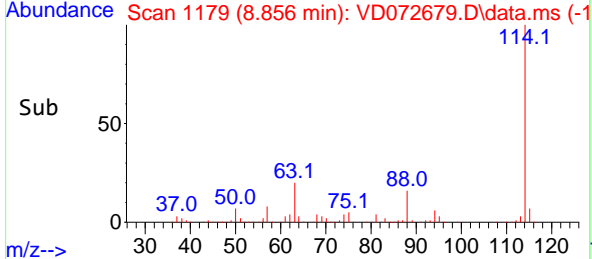
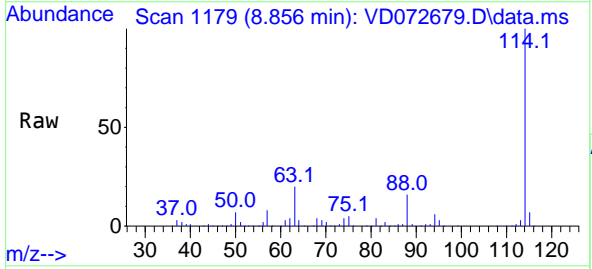
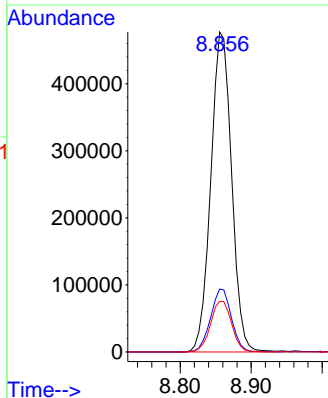


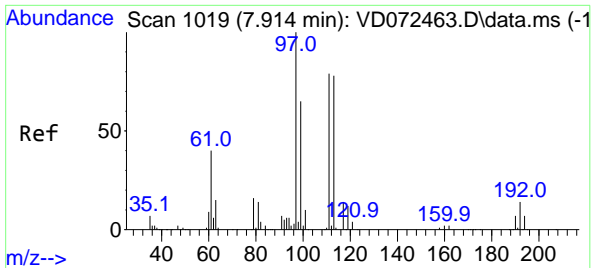
Tgt Ion: 65 Resp: 286629  
 Ion Ratio Lower Upper  
 65 100  
 67 53.6 0.0 101.4



#34  
 1,4-Difluorobenzene  
 Concen: 50.000 ug/l  
 RT: 8.856 min Scan# 1179  
 Delta R.T. -0.006 min  
 Lab File: VD072679.D  
 Acq: 21 Apr 2022 19:09

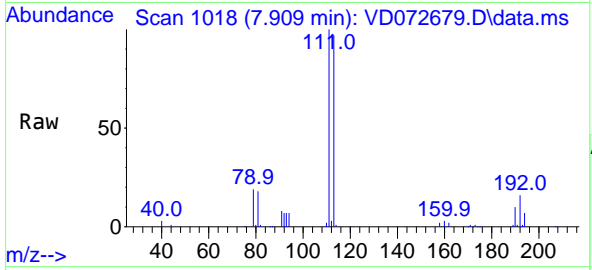
Tgt Ion: 114 Resp: 968411  
 Ion Ratio Lower Upper  
 114 100  
 63 19.7 0.0 46.6  
 88 15.8 0.0 33.2



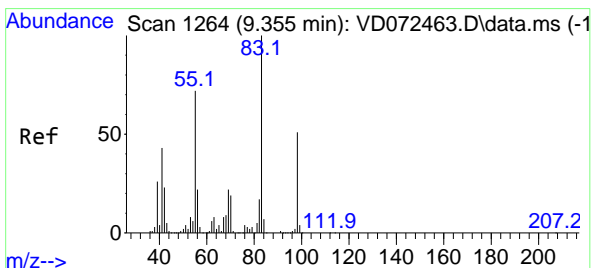
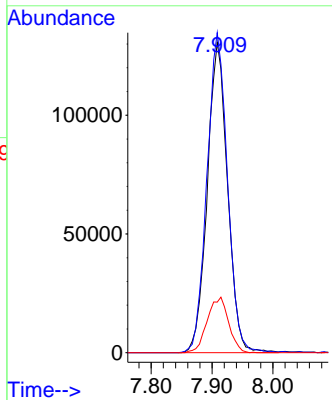
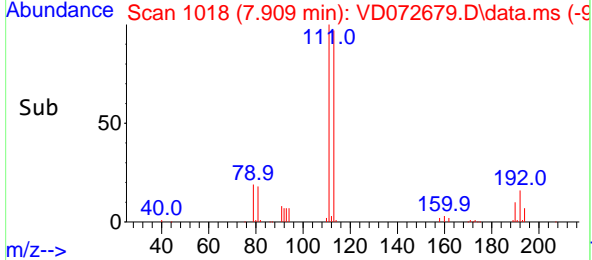


#35  
 Dibromofluoromethane  
 Concen: 40.219 ug/l  
 RT: 7.909 min Scan# 1018  
 Delta R.T. -0.006 min  
 Lab File: VD072679.D  
 Acq: 21 Apr 2022 19:09

Instrument : MSVOA\_D  
 ClientSampleId : HR-04-042122

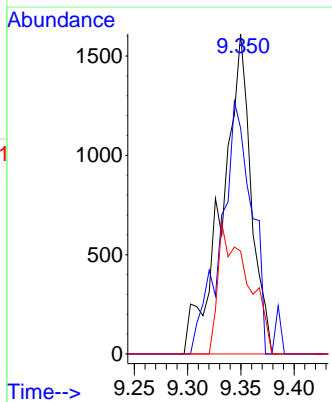
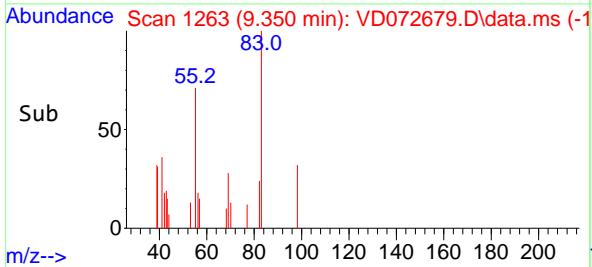
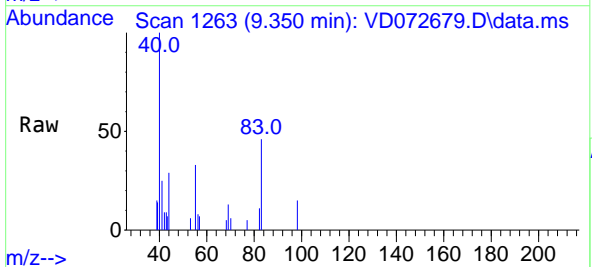


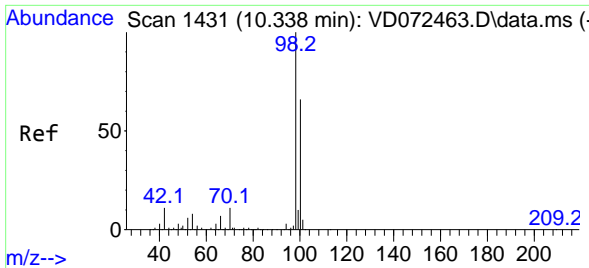
Tgt Ion:113 Resp: 302687  
 Ion Ratio Lower Upper  
 113 100  
 111 104.5 83.8 125.6  
 192 18.8 14.6 21.8



#39  
 Methylcyclohexane  
 Concen: 3.135 ug/l  
 RT: 9.350 min Scan# 1263  
 Delta R.T. -0.005 min  
 Lab File: VD072679.D  
 Acq: 21 Apr 2022 19:09

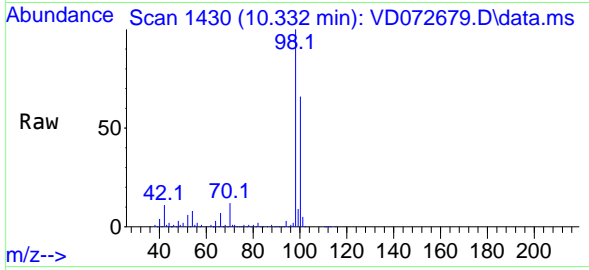
Tgt Ion: 83 Resp: 3072  
 Ion Ratio Lower Upper  
 83 100  
 55 70.6 63.2 94.8  
 98 32.2 38.2 57.4#



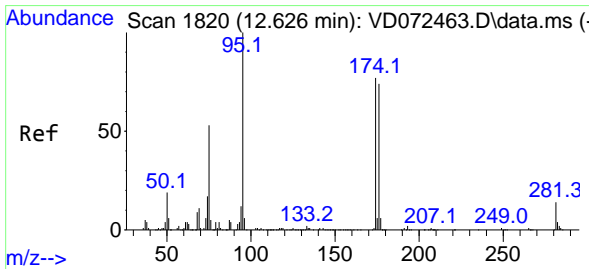
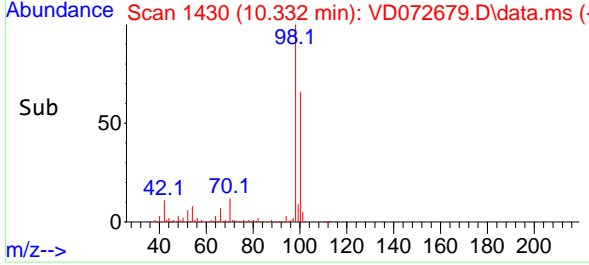
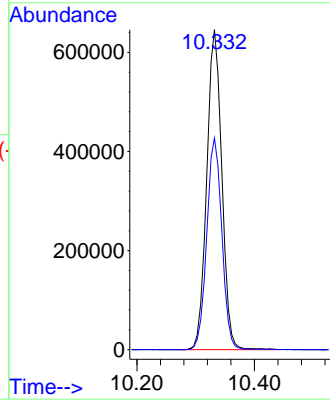


#50  
 Toluene-d8  
 Concen: 43.936 ug/l  
 RT: 10.332 min Scan# 1430  
 Delta R.T. -0.006 min  
 Lab File: VD072679.D  
 Acq: 21 Apr 2022 19:09

Instrument : MSVOA\_D  
 ClientSampleId : HR-04-042122

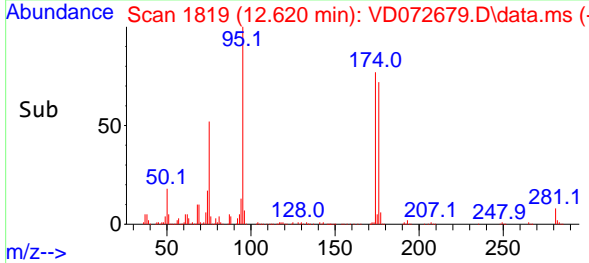
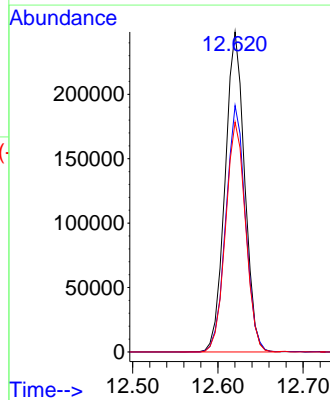
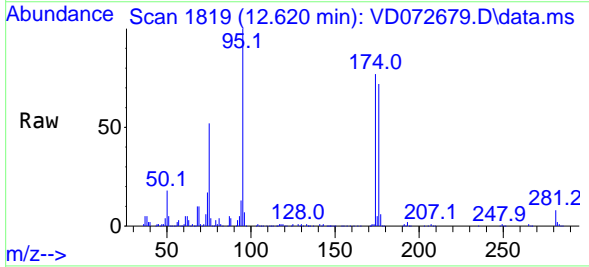


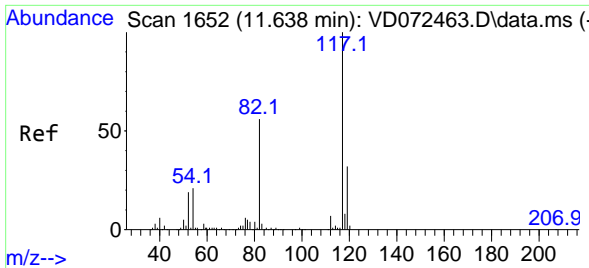
Tgt Ion: 98 Resp: 1149401  
 Ion Ratio Lower Upper  
 98 100  
 100 66.1 52.4 78.6



#62  
 4-Bromofluorobenzene  
 Concen: 38.794 ug/l  
 RT: 12.620 min Scan# 1819  
 Delta R.T. -0.006 min  
 Lab File: VD072679.D  
 Acq: 21 Apr 2022 19:09

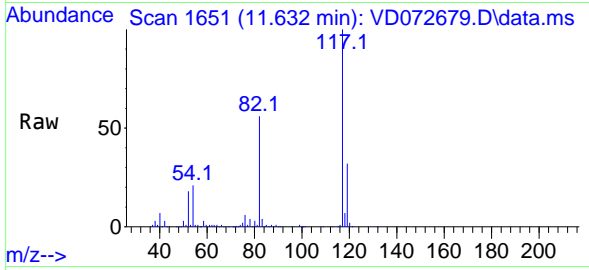
Tgt Ion: 95 Resp: 396353  
 Ion Ratio Lower Upper  
 95 100  
 174 77.1 0.0 152.8  
 176 73.2 0.0 145.4





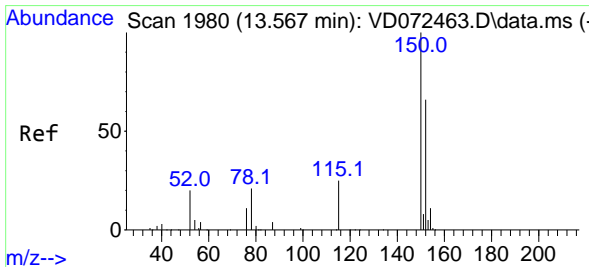
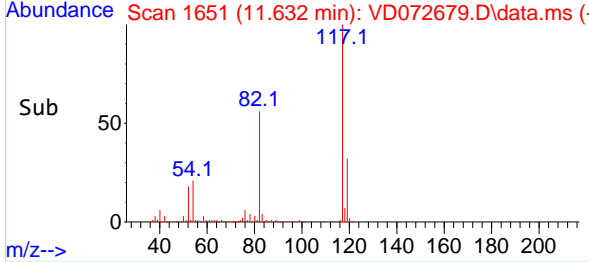
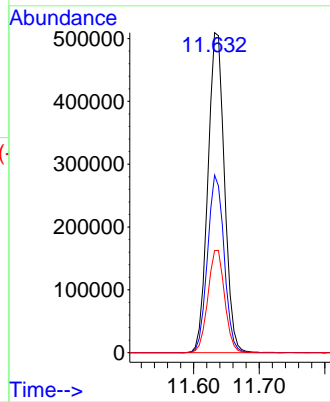
#63  
 Chlorobenzene-d5  
 Concen: 50.000 ug/l  
 RT: 11.632 min Scan# 11  
 Delta R.T. -0.006 min  
 Lab File: VD072679.D  
 Acq: 21 Apr 2022 19:09

Instrument : MSVOA\_D  
 ClientSampleId : HR-04-042122

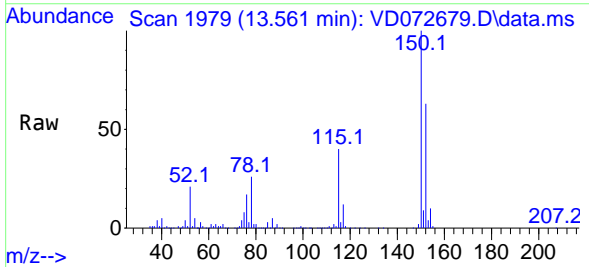


Tgt Ion:117 Resp: 896514

Ion	Ratio	Lower	Upper
117	100		
82	55.5	45.3	67.9
119	31.9	26.6	40.0



#72  
 1,4-Dichlorobenzene-d4  
 Concen: 50.000 ug/l  
 RT: 13.561 min Scan# 1979  
 Delta R.T. -0.006 min  
 Lab File: VD072679.D  
 Acq: 21 Apr 2022 19:09



Tgt Ion:152 Resp: 394847

Ion	Ratio	Lower	Upper
152	100		
115	60.8	31.3	93.8
150	157.6	0.0	348.6

