

Data Path : Z:\VOASRV\HPCHEM1\MSVOA D\DATA\VD042219\
 Data File : VD061941.D
 Acq On : 22 Apr 2019 16:22
 Operator : VA/AP
 Sample : K2201-09
 Misc : 5.73g/5ml/MSVOA D/SOIL
 ALS Vial : 11 Sample Multiplier: 1

Instrument :
 MSVOA_D
 ClientSampleID :
 PL-01-041819-E

Quant Time: Apr 23 00:04:52 2019
 Quant Method : Z:\VOASRV\HPCHEM1\MSVOA_D\METHOD\82D041519S.M
 Quant Title : SW846 8260
 QLast Update : Thu Apr 18 13:49:04 2019
 Response via : Initial Calibration

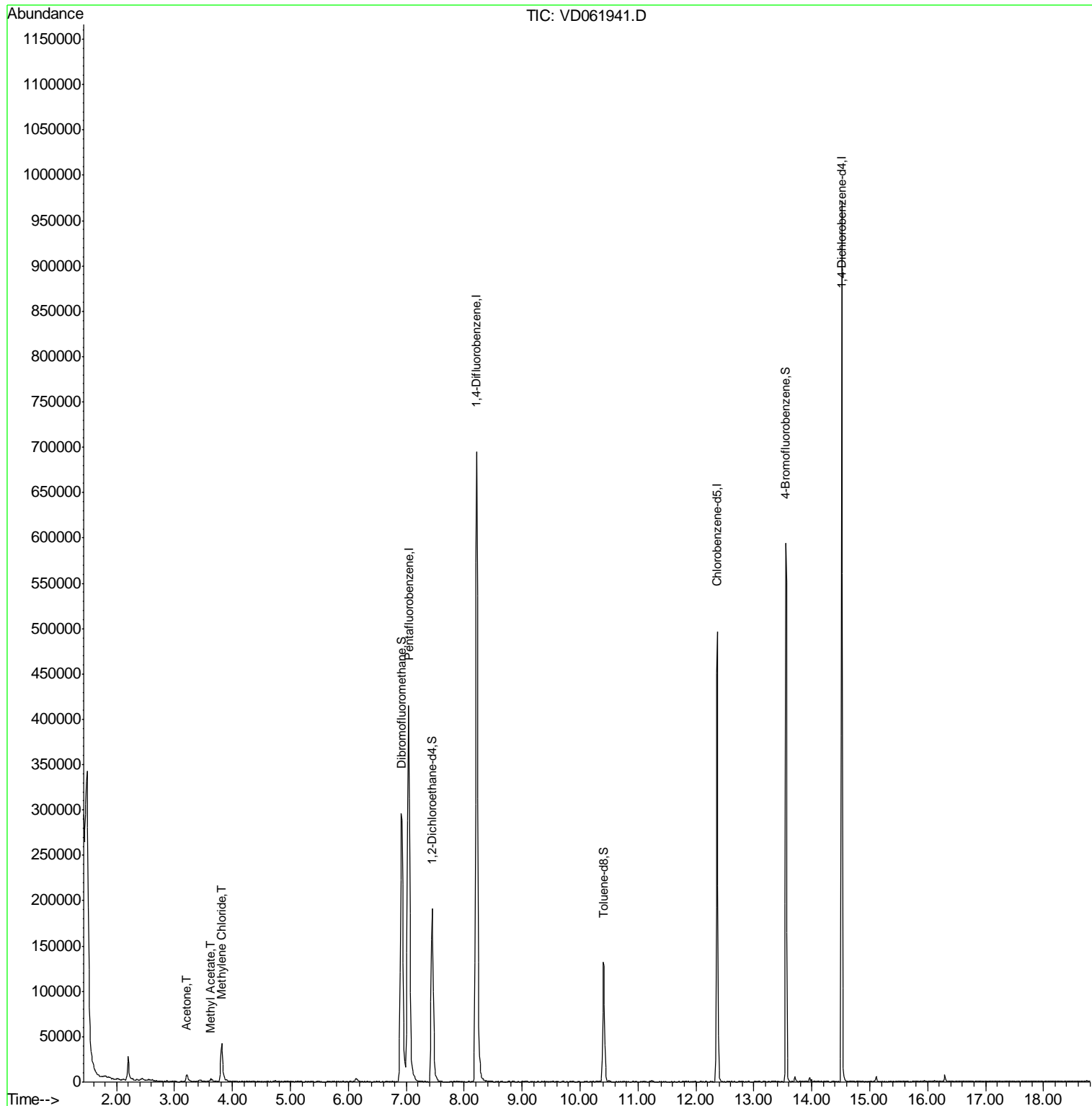
Internal Standards	R.T.	QIon	Response	Conc	Units	Dev(Min)
1) Pentafluorobenzene	7.04	168	430732	50.00	ug/l	0.00
34) 1,4-Difluorobenzene	8.21	114	811546	50.00	ug/l	0.00
63) Chlorobenzene-d5	12.37	117	325139	50.00	ug/l	0.00
72) 1,4-Dichlorobenzene-d4	14.51	152	219233	50.00	ug/l	0.00
System Monitoring Compounds						
33) 1,2-Dichloroethane-d4	7.45	65	190282	52.71	ug/l	0.00
Spiked Amount	50.000		Recovery	=	105.42%	
35) Dibromofluoromethane	6.91	113	294283	48.00	ug/l	0.00
Spiked Amount	50.000		Recovery	=	96.00%	
50) Toluene-d8	10.40	98	124999	8.60	ug/l	0.00
Spiked Amount	50.000		Recovery	=	17.20%	
62) 4-Bromofluorobenzene	13.55	95	203053	34.48	ug/l	0.00
Spiked Amount	50.000		Recovery	=	68.96%	
Target Compounds						
16) Acetone	3.21	43	14441	16.231	ug/l	97
18) Methyl Acetate	3.63	43	5607	3.144	ug/l #	89
20) Methylene Chloride	3.81	84	31206	2.719	ug/l	93

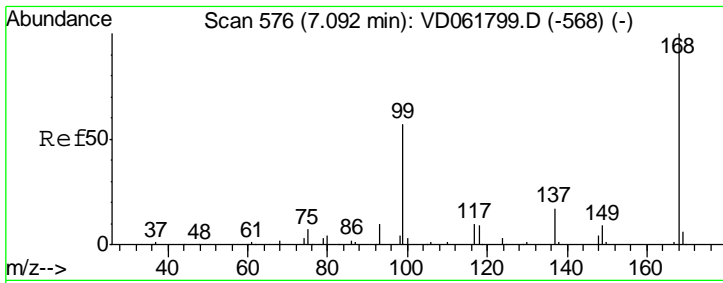
(#) = qualifier out of range (m) = manual integration (+) = signals summed

Data Path : Z:\VOASRV\HPCHEM1\MSVOA D\DATA\VD042219\
 Data File : VD061941.D
 Acq On : 22 Apr 2019 16:22
 Operator : VA/AP
 Sample : K2201-09
 Misc : 5.73g/5ml/MSVOA D/SOIL
 ALS Vial : 11 Sample Multiplier: 1

Instrument :
 MSVOA_D
 ClientSampleId :
 PL-01-041819-E

Quant Time: Apr 23 00:04:52 2019
 Quant Method : Z:\VOASRV\HPCHEM1\MSVOA_D\METHOD\82D041519S.M
 Quant Title : SW846 8260
 QLast Update : Thu Apr 18 13:49:04 2019
 Response via : Initial Calibration

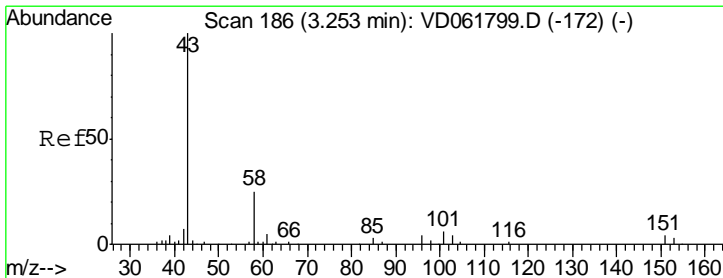
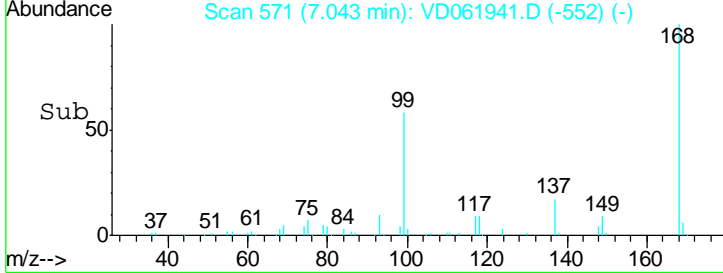
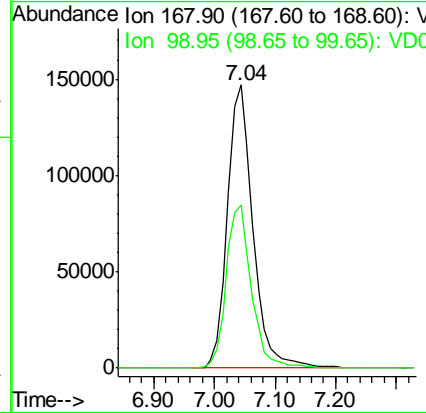
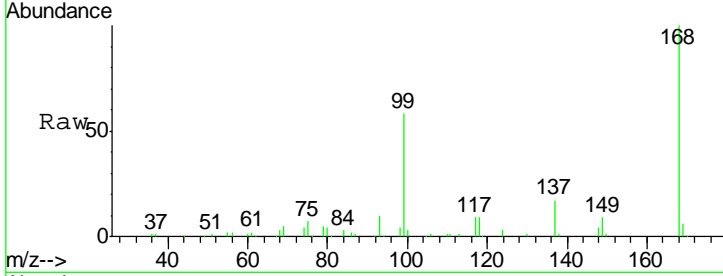




#1
 Pentafluorobenzene
 Concen: 50.000 ug/l
 RT: 7.04 min Scan# 571
 Delta R.T. -0.01 min
 Lab File: VD061941.D
 Acq: 22 Apr 2019 16:22

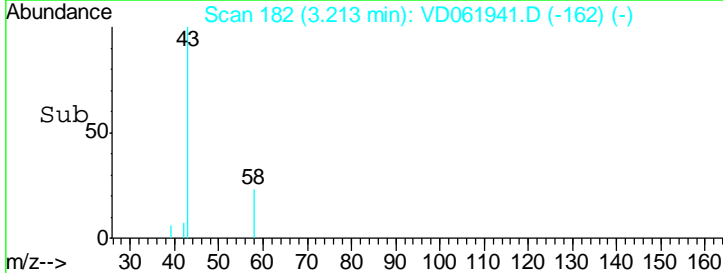
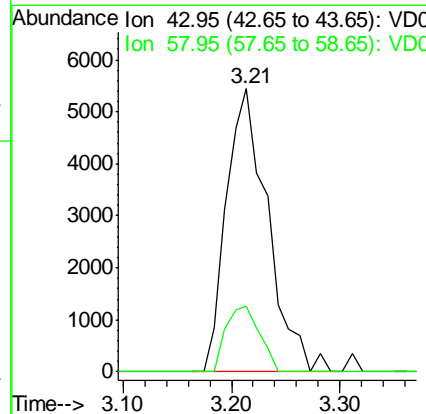
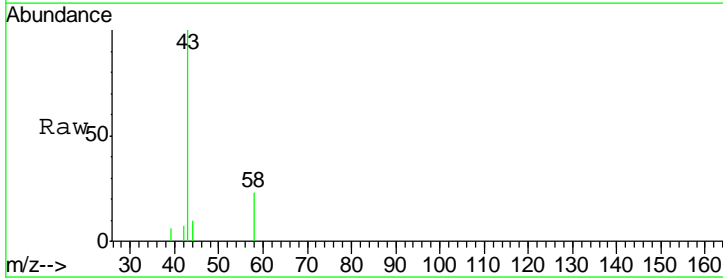
Instrument :
 MSVOA_D
 ClientSampleId :
 PL-01-041819-E

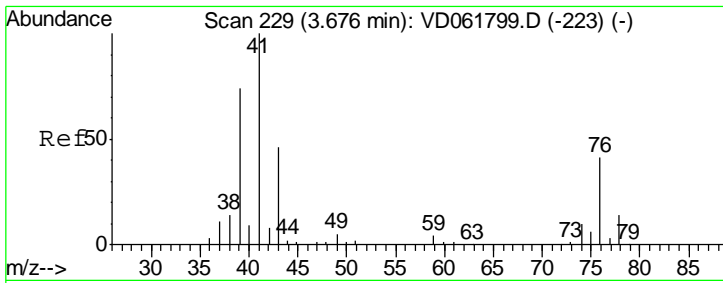
Tot Ion: 168 Resp: 430732
 Ion Ratio Lower Upper
 168 100
 99 57.8 46.5 69.7



#16
 Acetone
 Concen: 16.231 ug/l
 RT: 3.21 min Scan# 182
 Delta R.T. 0.00 min
 Lab File: VD061941.D
 Acq: 22 Apr 2019 16:22

Tgt Ion: 43 Resp: 14441
 Ion Ratio Lower Upper
 43 100
 58 23.3 19.9 29.9

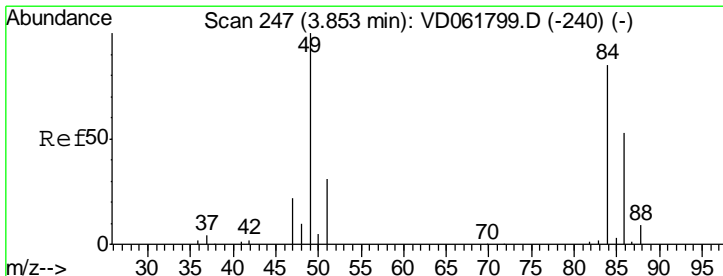
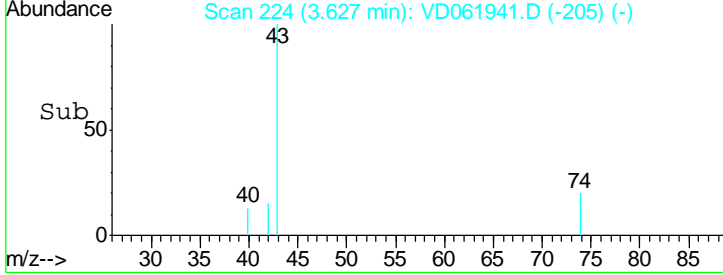
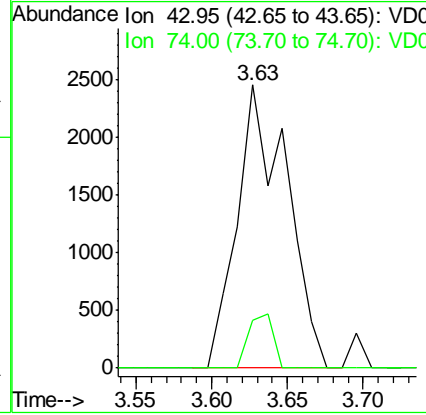
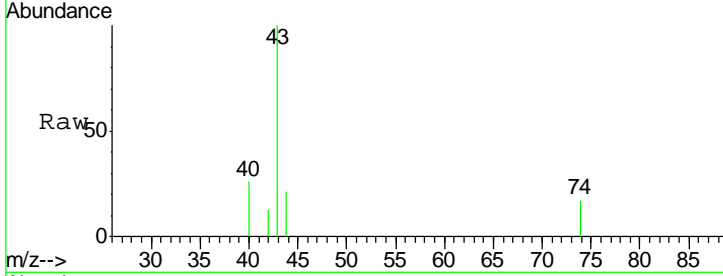




#18
 Methyl Acetate
 Concen: 3.144 ug/l
 RT: 3.63 min Scan# 224
 Delta R.T. -0.01 min
 Lab File: VD061941.D
 Acq: 22 Apr 2019 16:22

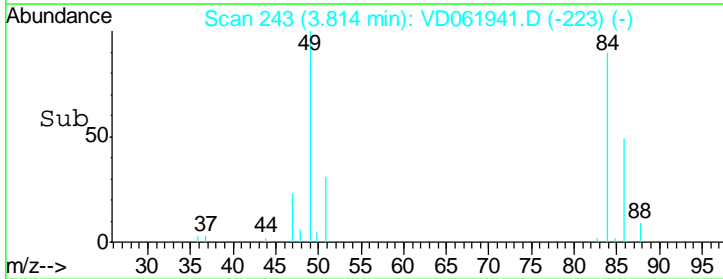
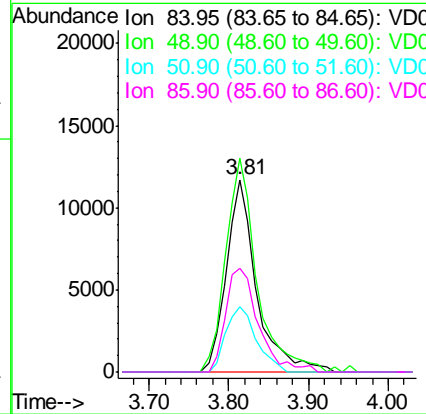
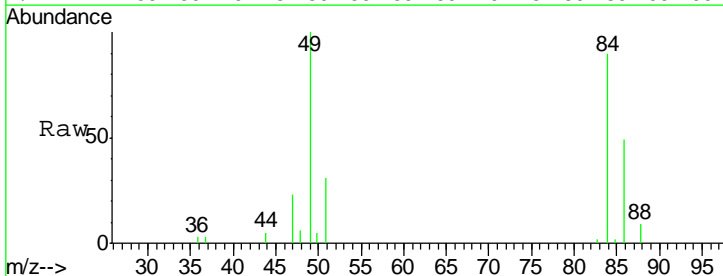
Instrument :
 MSVOA_D
 ClientSampleId :
 PL-01-041819-E

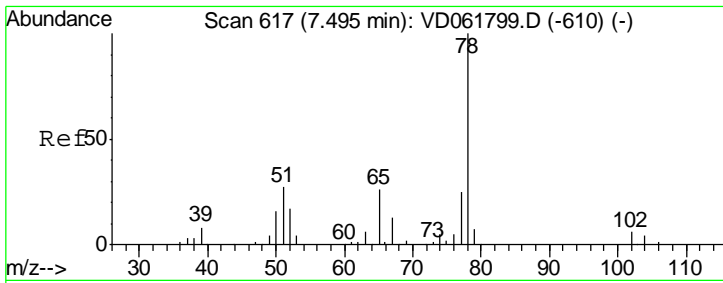
Tgt Ion: 43 Resp: 5607
 Ion Ratio Lower Upper
 43 100
 74 17.0 18.0 27.0#



#20
 Methylene Chloride
 Concen: 2.719 ug/l
 RT: 3.81 min Scan# 243
 Delta R.T. 0.00 min
 Lab File: VD061941.D
 Acq: 22 Apr 2019 16:22

Tgt Ion: 84 Resp: 31206
 Ion Ratio Lower Upper
 84 100
 49 110.9 94.0 141.0
 51 34.1 29.0 43.4
 86 53.8 49.8 74.6

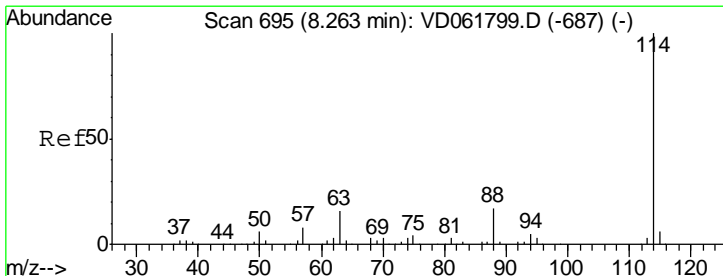
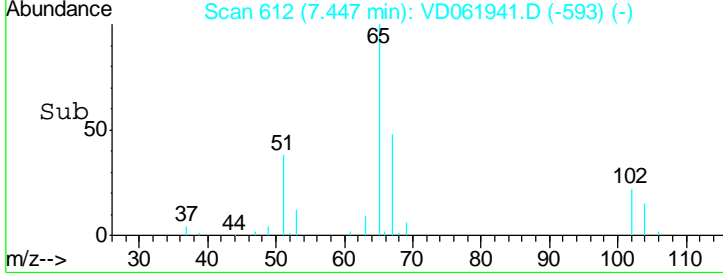
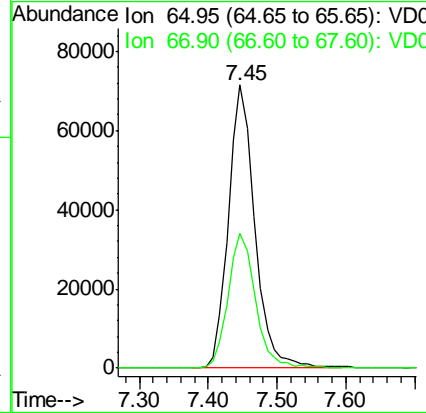
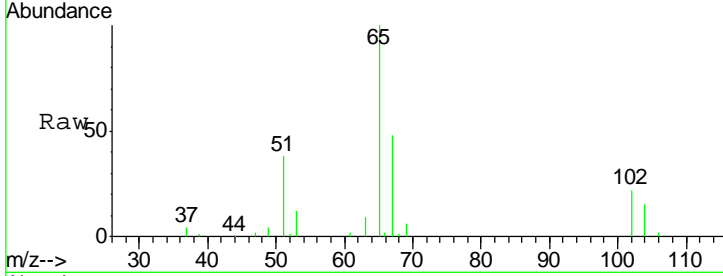




#33
 1,2-Dichloroethane-d4
 Concen: N.D. ug/l
 RT: 7.45 min Scan# 612
 Delta R.T. -0.01 min
 Lab File: VD061941.D
 Acq: 22 Apr 2019 16:22

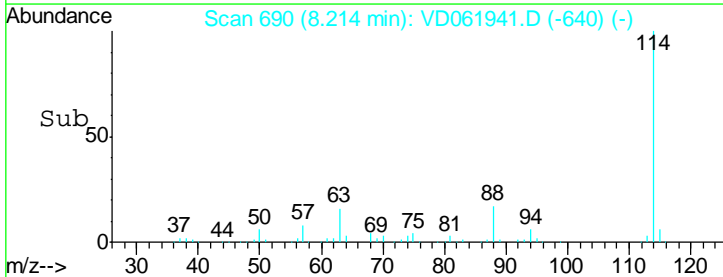
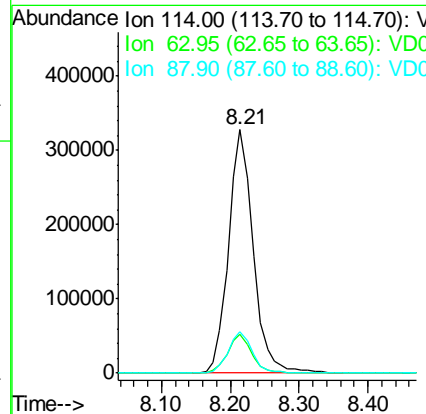
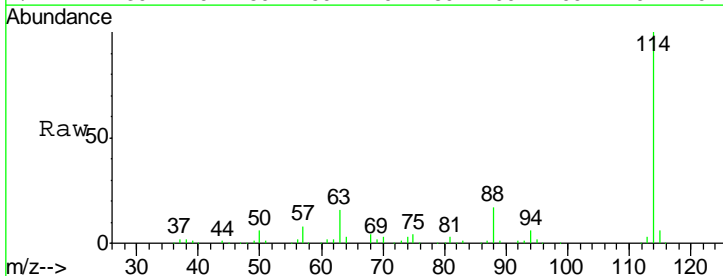
Instrument : MSVOA_D
 ClientSampled : PL-01-041819-E

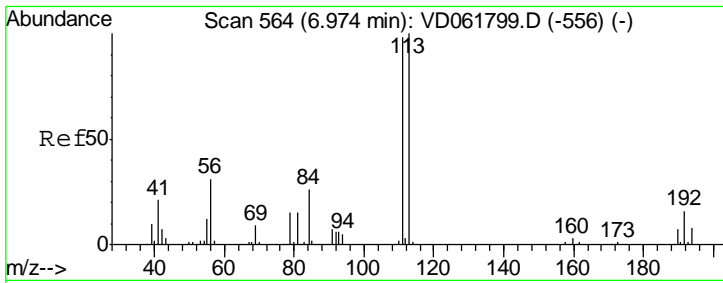
Tgt Ion	Resp	Lower	Upper
65	190282		
65	100		
67	47.6	0.0	98.0



#34
 1,4-Difluorobenzene
 Concen: 50.000 ug/l
 RT: 8.21 min Scan# 690
 Delta R.T. -0.01 min
 Lab File: VD061941.D
 Acq: 22 Apr 2019 16:22

Tgt Ion	Resp	Lower	Upper
114	811546		
114	100		
63	16.1	0.0	32.4
88	17.0	0.0	33.6

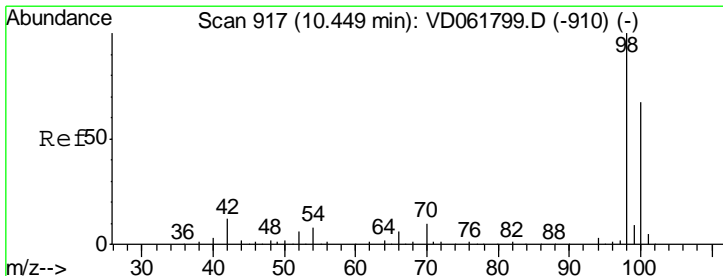
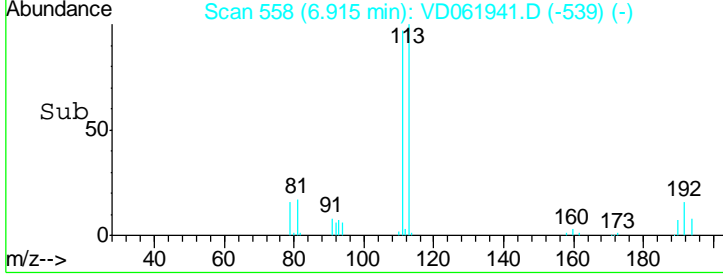
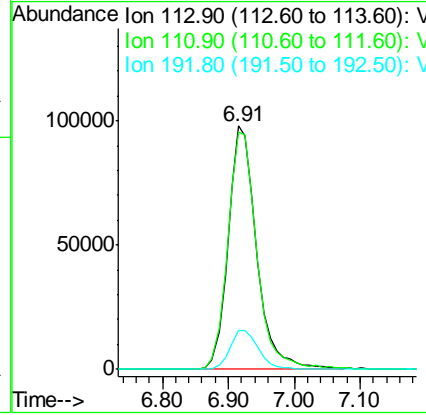
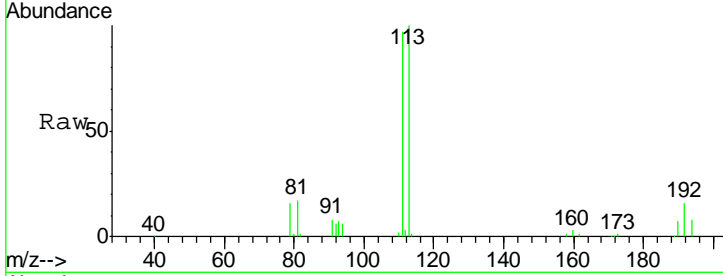




#35
 Dibromofluoromethane
 Concen: 50.000 ug/l
 RT: 6.91 min Scan# 558
 Delta R.T. -0.01 min
 Lab File: VD061941.D
 Acq: 22 Apr 2019 16:22

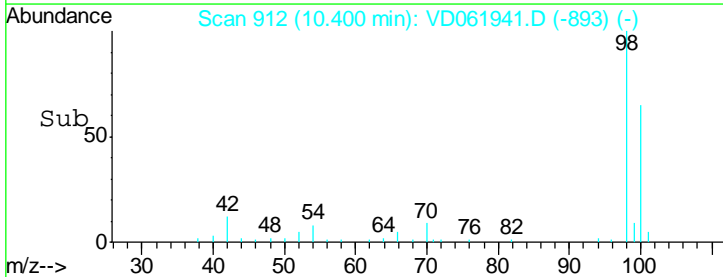
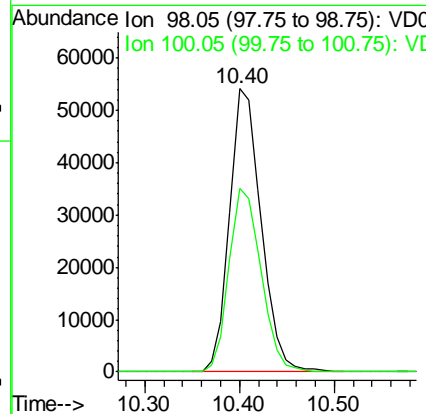
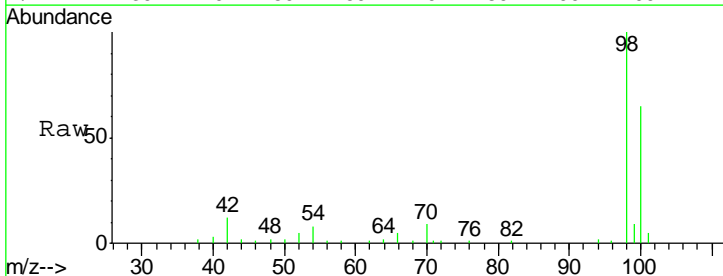
Instrument : MSVOA_D
 ClientSampleId : PL-01-041819-E

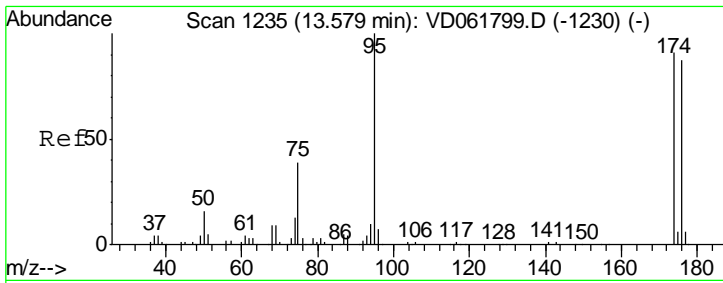
Tgt Ion	Resp	Lower	Upper
113	294283		
111	97.4	78.5	117.7
192	15.8	13.0	19.4



#50
 Toluene-d8
 Concen: N.D. ug/l
 RT: 10.40 min Scan# 912
 Delta R.T. -0.01 min
 Lab File: VD061941.D
 Acq: 22 Apr 2019 16:22

Tgt Ion	Resp	Lower	Upper
98	124999		
100	65.0	53.8	80.8

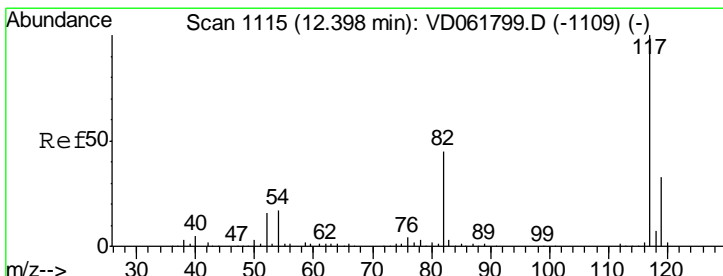
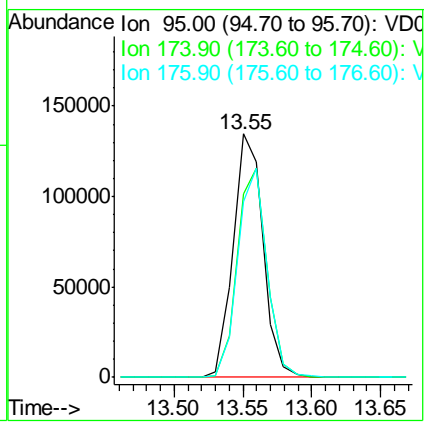
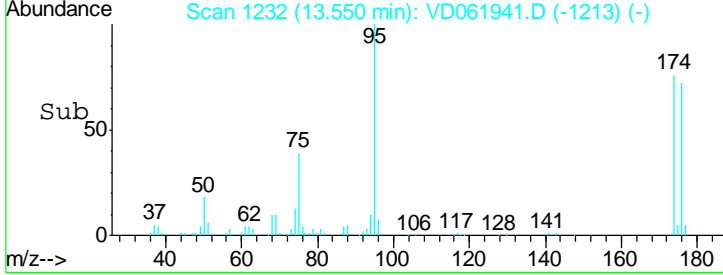
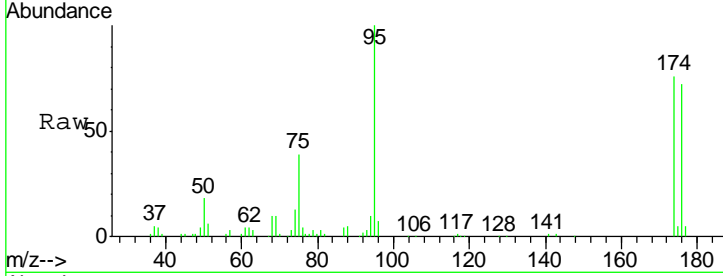




#62
 4-Bromofluorobenzene
 Concen: N.D. ug/l
 RT: 13.55 min Scan# 1232
 Delta R.T. -0.01 min
 Lab File: VD061941.D
 Acq: 22 Apr 2019 16:22

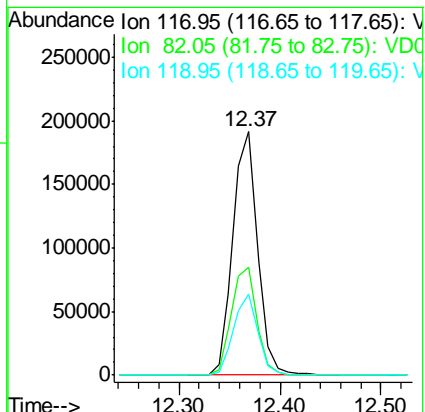
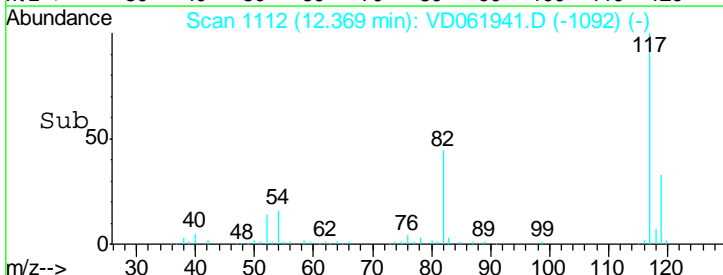
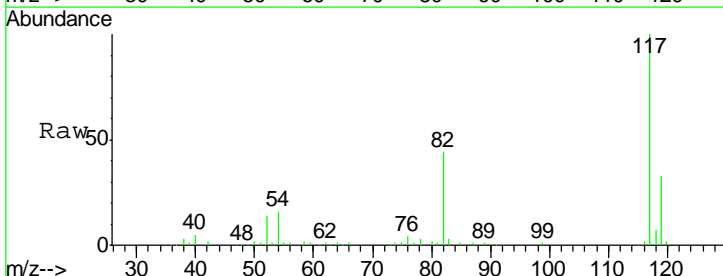
Instrument : MSVOA_D
 ClientSampled : PL-01-041819-E

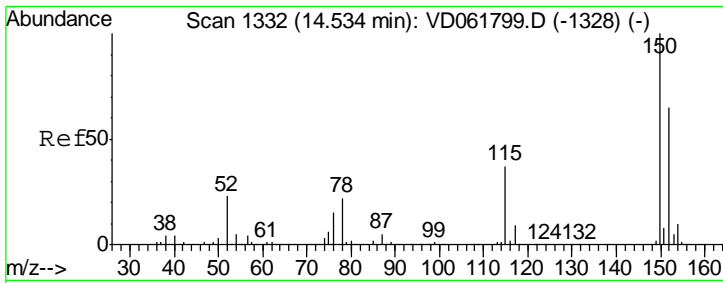
Tgt Ion	Resp	Lower	Upper
95	100		
174	75.5	0.0	181.8
176	72.0	0.0	174.4



#63
 Chlorobenzene-d5
 Concen: 50.000 ug/l
 RT: 12.37 min Scan# 1112
 Delta R.T. 0.00 min
 Lab File: VD061941.D
 Acq: 22 Apr 2019 16:22

Tgt Ion	Resp	Lower	Upper
117	100		
82	44.1	36.2	54.2
119	33.5	26.2	39.4





#72
 1,4-Dichlorobenzene-d4
 Concen: 50.000 ug/l
 RT: 14.51 min Scan# 1330
 Delta R.T. -0.01 min
 Lab File: VD061941.D
 Acq: 22 Apr 2019 16:22

Instrument : MSVOA_D
 ClientSampled : PL-01-041819-E

Tot Ion	Resp	Lower	Upper
152	100		
115	60.1	30.9	92.7
150	160.3	0.0	314.8

