

Data Path : Z:\VOASRV\HPCHEM1\MSVOA D\DATA\VD042419\  
 Data File : VD061999.D  
 Acq On : 24 Apr 2019 15:53  
 Operator : VA/AP  
 Sample : K2510-03RE  
 Misc : 5.23g/5ml/MSVOA D/SOIL  
 ALS Vial : 13 Sample Multiplier: 1

Instrument :  
 MSVOA\_D  
 ClientSampleID :

Quant Time: Apr 25 09:10:36 2019  
 Quant Method : Z:\VOASRV\HPCHEM1\MSVOA\_D\METHOD\82D042319S.M  
 Quant Title : SW846 8260  
 QLast Update : Tue Apr 23 14:52:55 2019  
 Response via : Initial Calibration

Internal Standards	R.T.	QIon	Response	Conc	Units	Dev(Min)
1) Pentafluorobenzene	7.05	168	454581	50.00	ug/l	0.00
34) 1,4-Difluorobenzene	8.23	114	787906	50.00	ug/l	0.00
63) Chlorobenzene-d5	12.37	117	643038	50.00	ug/l	0.00
72) 1,4-Dichlorobenzene-d4	14.53	152	199568	50.00	ug/l	0.00

## System Monitoring Compounds

33) 1,2-Dichloroethane-d4	7.46	65	179441	50.44	ug/l	0.00
Spiked Amount	50.000		Recovery	=	100.88%	
35) Dibromofluoromethane	6.93	113	276982	50.83	ug/l	0.00
Spiked Amount	50.000		Recovery	=	101.66%	
50) Toluene-d8	10.41	98	540214	41.66	ug/l	0.00
Spiked Amount	50.000		Recovery	=	83.32%	
62) 4-Bromofluorobenzene	13.56	95	187102	35.98	ug/l	0.00
Spiked Amount	50.000		Recovery	=	71.96%	

## Target Compounds

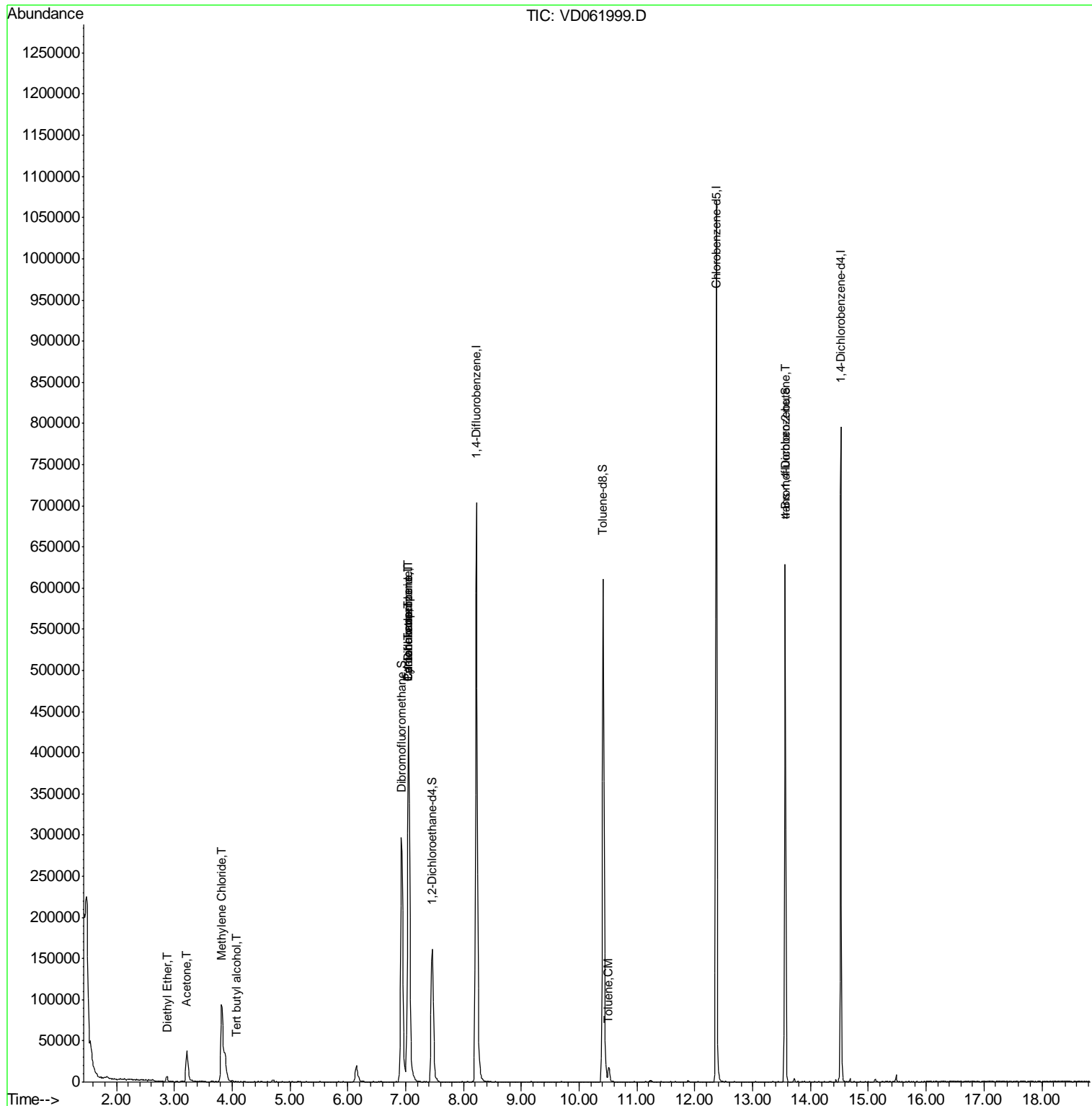
					Qvalue	
5) Bromomethane	2.15	94	392	Below Cal	#	12
8) Diethyl Ether	2.87	74	2258	1.782	ug/l	79
11) Tert butyl alcohol	4.07	59	374	1.861	ug/l #	76
16) Acetone	3.21	43	71998	84.754	ug/l	97
18) Methyl Acetate	3.65	43	2419	Below Cal	#	53
20) Methylene Chloride	3.82	84	71337	15.019	ug/l	93
31) Cyclohexane	7.04	56	8034	1.516	ug/l #	1
36) 1,1-Dichloropropene	7.04	75	33618	5.476	ug/l #	46
38) Carbon Tetrachloride	7.04	117	43451	5.586	ug/l #	16
52) Toluene	10.52	92	9890	1.021	ug/l	91
81) trans-1,4-Dichloro-2-buten	13.56	75	70936	92.369	ug/l #	16

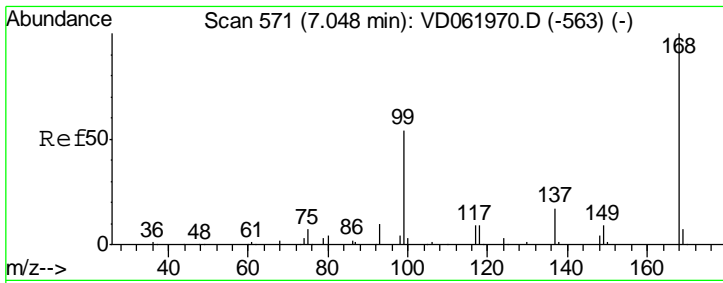
(#) = qualifier out of range (m) = manual integration (+) = signals summed

Data Path : Z:\VOASRV\HPCHEM1\MSVOA D\DATA\VD042419\  
 Data File : VD061999.D  
 Acq On : 24 Apr 2019 15:53  
 Operator : VA/AP  
 Sample : K2510-03RE  
 Misc : 5.23g/5ml/MSVOA D/SOIL  
 ALS Vial : 13 Sample Multiplier: 1

Instrument :  
 MSVOA\_D  
 ClientSampleId :

Quant Time: Apr 25 09:10:36 2019  
 Quant Method : Z:\VOASRV\HPCHEM1\MSVOA\_D\METHOD\82D042319S.M  
 Quant Title : SW846 8260  
 QLast Update : Tue Apr 23 14:52:55 2019  
 Response via : Initial Calibration

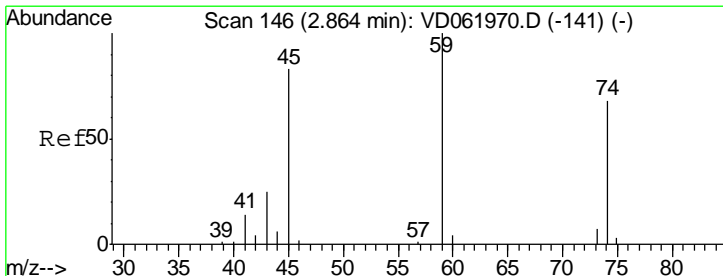
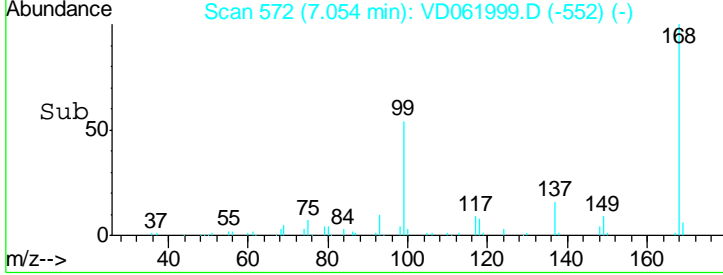
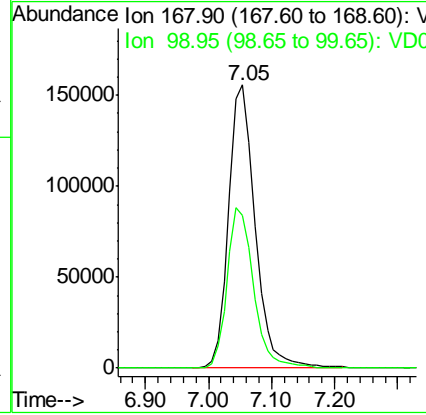
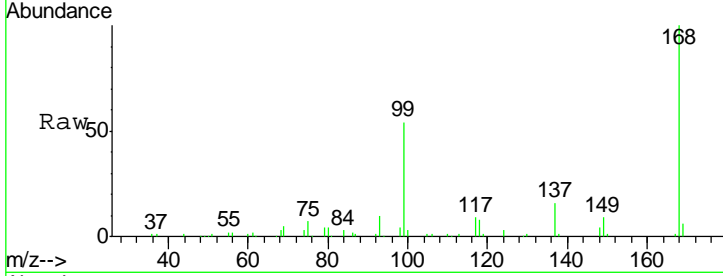




#1  
 Pentafluorobenzene  
 Concen: 50.000 ug/l  
 RT: 7.05 min Scan# 572  
 Delta R.T. 0.00 min  
 Lab File: VD061999.D  
 Acq: 24 Apr 2019 15:53

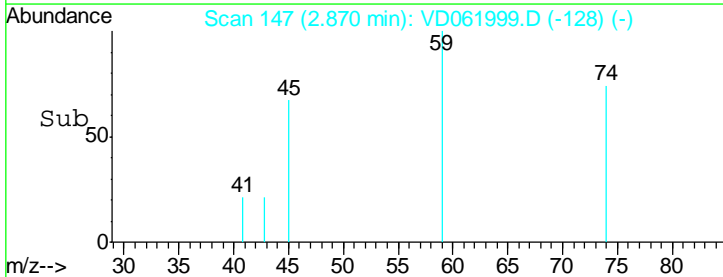
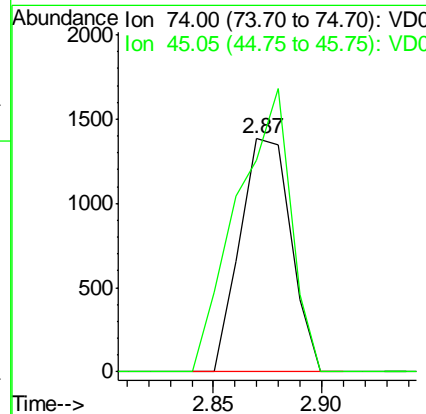
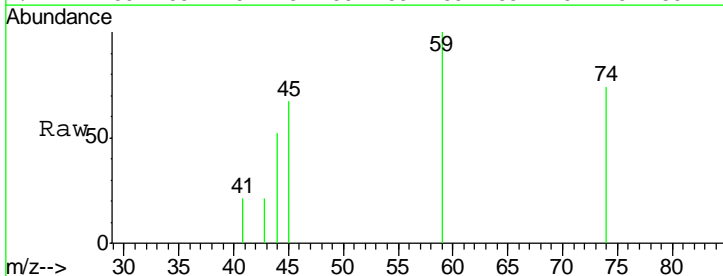
Instrument :  
 MSVOA\_D  
 ClientSampled :

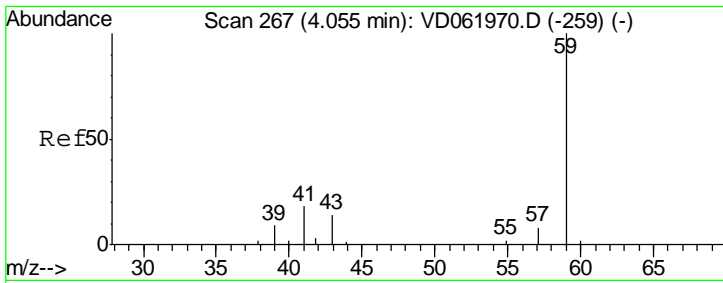
Tot Ion: 168 Resp: 454581  
 Ion Ratio Lower Upper  
 168 100  
 99 54.0 46.5 69.7



#8  
 Diethyl Ether  
 Concen: 1.782 ug/l  
 RT: 2.87 min Scan# 147  
 Delta R.T. -0.01 min  
 Lab File: VD061999.D  
 Acq: 24 Apr 2019 15:53

Tgt Ion: 74 Resp: 2258  
 Ion Ratio Lower Upper  
 74 100  
 45 90.7 56.9 170.7

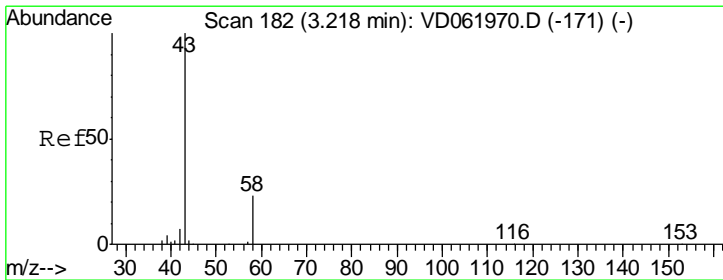
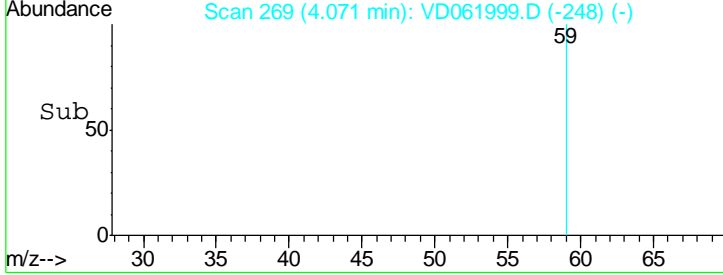
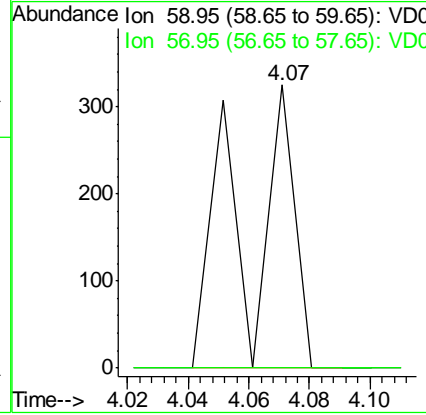
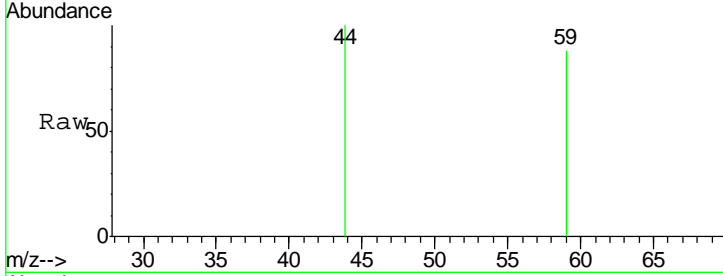




#11  
 Tert butyl alcohol  
 Concen: 1.861 ug/l  
 RT: 4.07 min Scan# 269  
 Delta R.T. 0.01 min  
 Lab File: VD061999.D  
 Acq: 24 Apr 2019 15:53

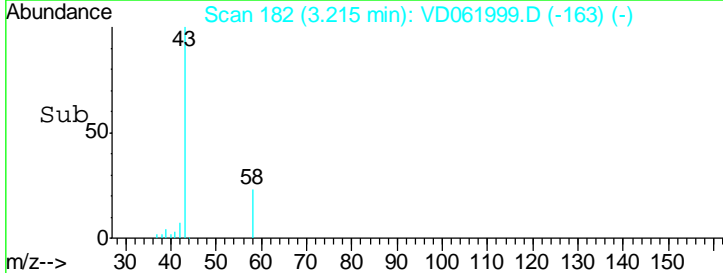
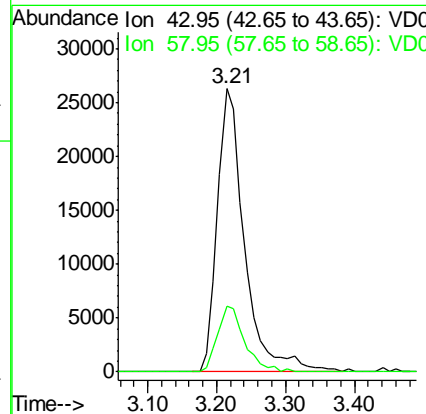
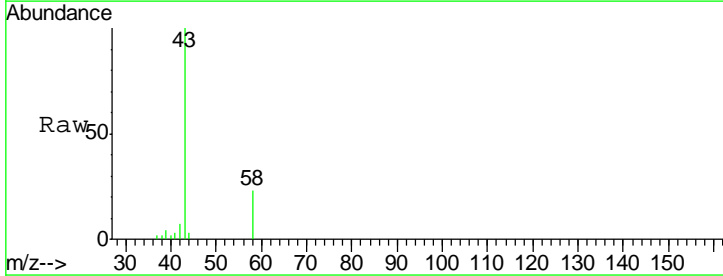
Instrument : MSVOA\_D  
 ClientSampled :

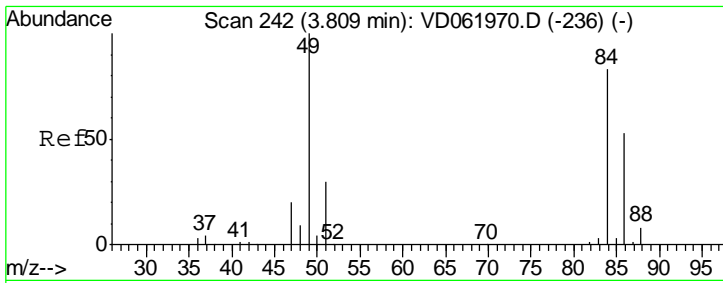
Tgt Ion: 59 Resp: 374  
 Ion Ratio Lower Upper  
 59 100  
 57 0.0 6.9 10.3#



#16  
 Acetone  
 Concen: 84.754 ug/l  
 RT: 3.21 min Scan# 182  
 Delta R.T. -0.01 min  
 Lab File: VD061999.D  
 Acq: 24 Apr 2019 15:53

Tgt Ion: 43 Resp: 71998  
 Ion Ratio Lower Upper  
 43 100  
 58 23.2 19.9 29.9

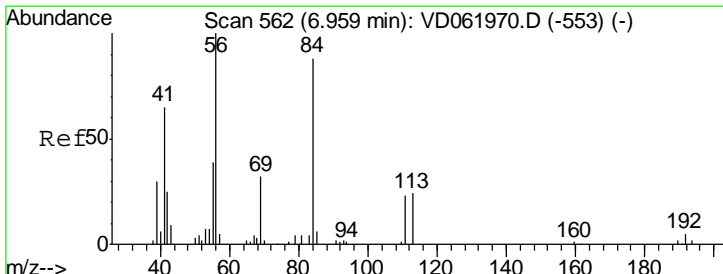
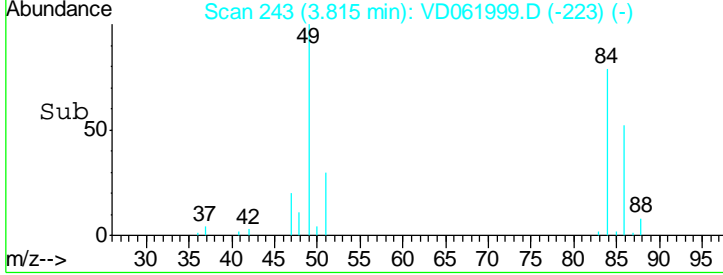
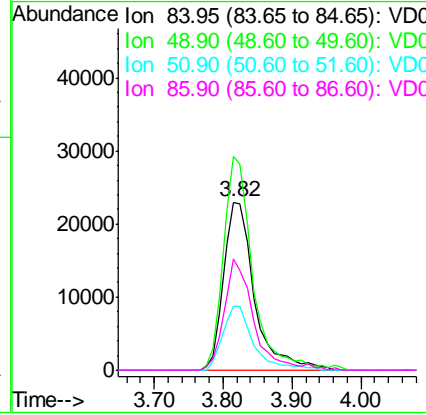
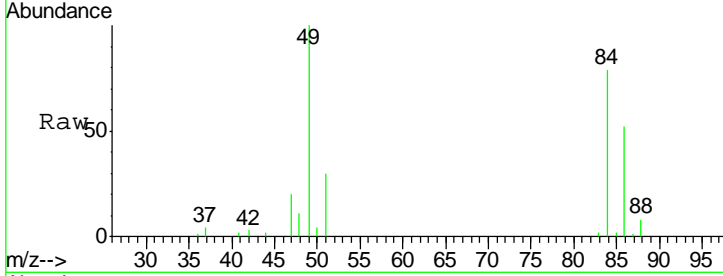




#20  
Methylene Chloride  
Concen: 15.019 ug/l  
RT: 3.82 min Scan# 243  
Delta R.T. -0.01 min  
Lab File: VD061999.D  
Acq: 24 Apr 2019 15:53

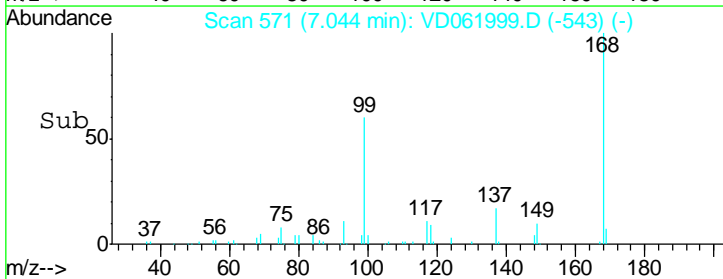
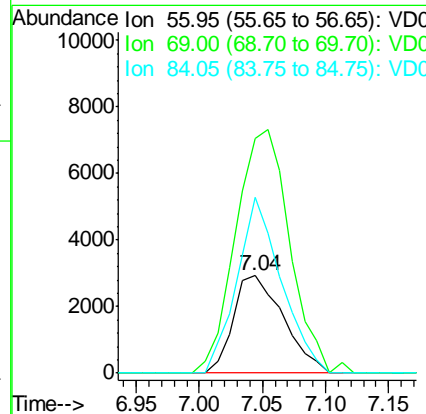
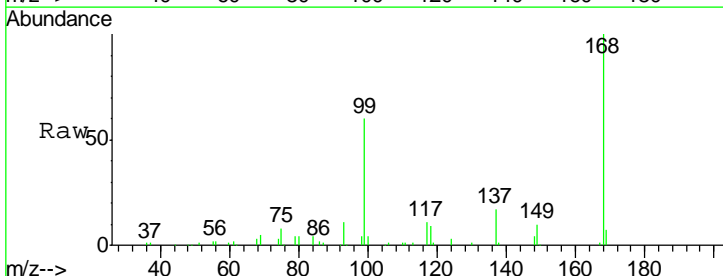
Instrument :  
MSVOA\_D  
ClientSampled :

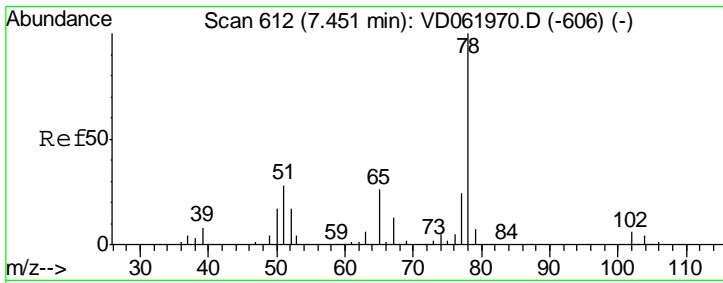
Tgt Ion	Resp	Lower	Upper
84	100		
49	127.1	94.0	141.0
51	38.5	29.0	43.4
86	66.3	49.8	74.6



#31  
Cyclohexane  
Concen: 1.516 ug/l  
RT: 7.04 min Scan# 571  
Delta R.T. 0.08 min  
Lab File: VD061999.D  
Acq: 24 Apr 2019 15:53

Tgt Ion	Resp	Lower	Upper
56	100		
69	240.6	25.8	38.6#
84	180.1	72.2	108.4#

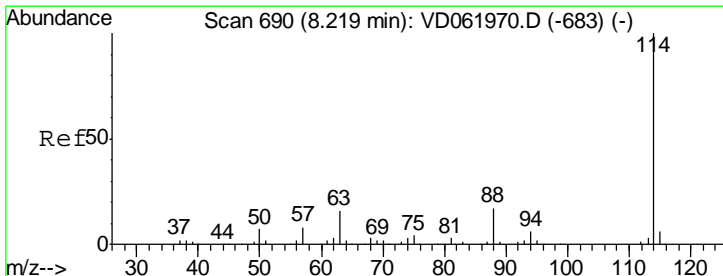
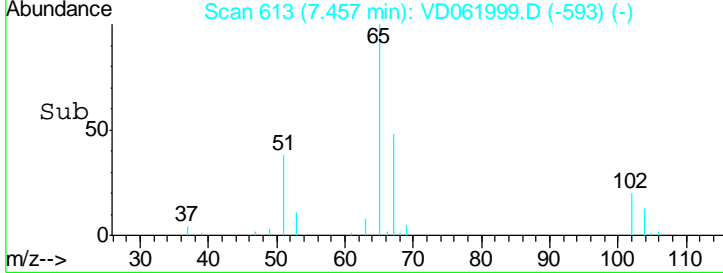
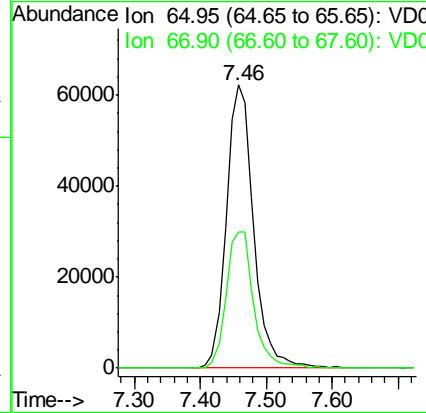
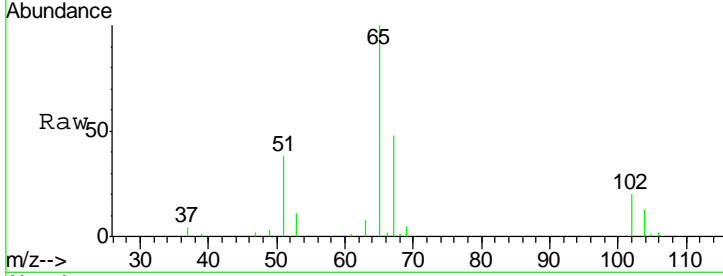




#33  
 1,2-Dichloroethane-d4  
 Concen: N.D. ug/l  
 RT: 7.46 min Scan# 613  
 Delta R.T. 0.00 min  
 Lab File: VD061999.D  
 Acq: 24 Apr 2019 15:53

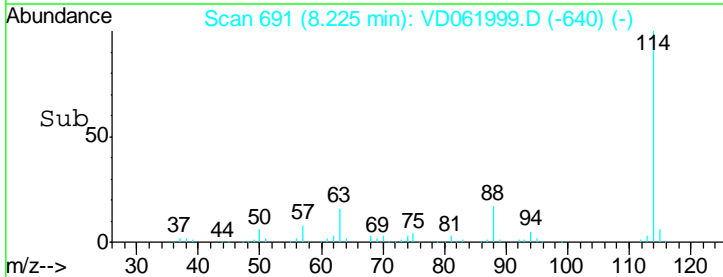
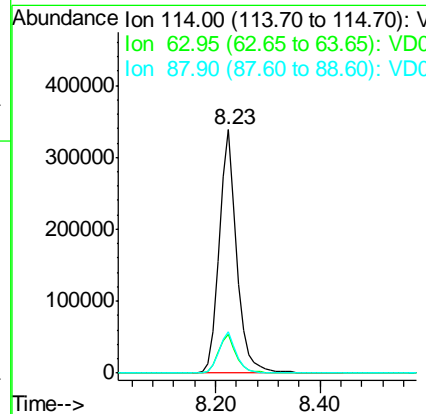
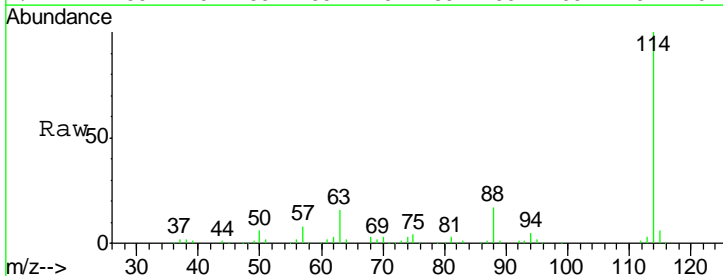
Instrument :  
 MSVOA\_D  
 ClientSampled :

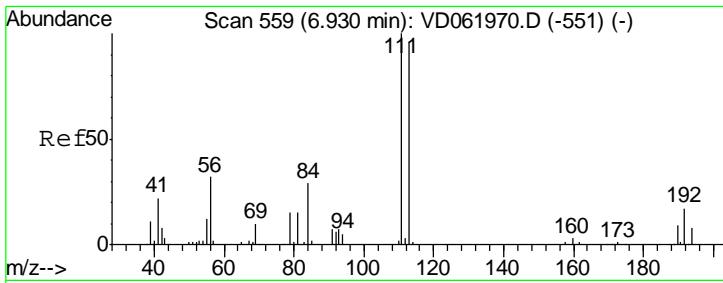
Tgt Ion	Resp	Lower	Upper
65	179441		
67	48.0	0.0	98.0



#34  
 1,4-Difluorobenzene  
 Concen: 50.000 ug/l  
 RT: 8.23 min Scan# 691  
 Delta R.T. 0.00 min  
 Lab File: VD061999.D  
 Acq: 24 Apr 2019 15:53

Tgt Ion	Resp	Lower	Upper
114	787906		
63	15.8	0.0	32.4
88	16.8	0.0	33.6

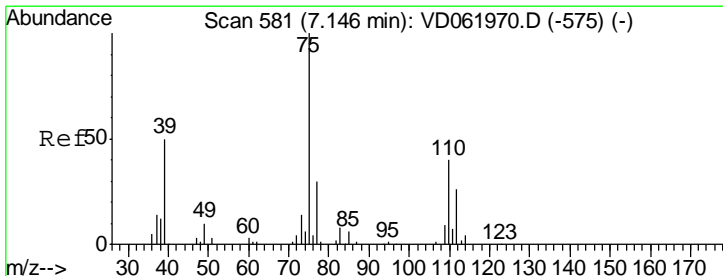
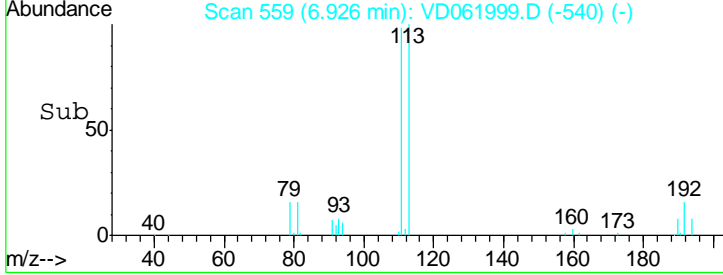
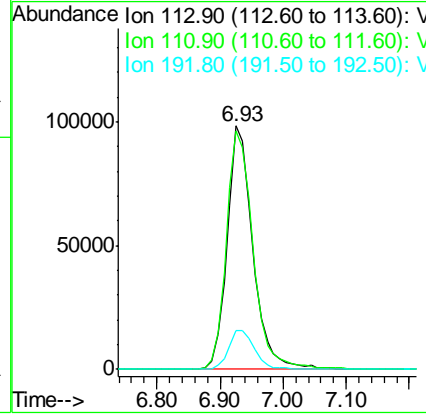
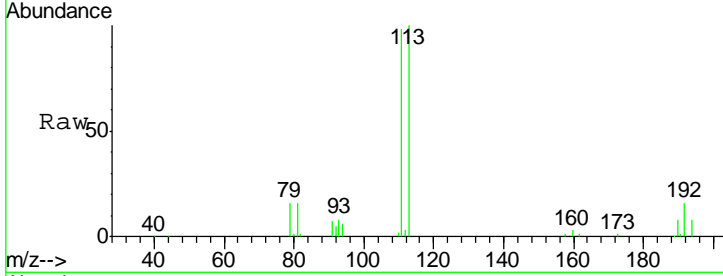




#35  
 Dibromofluoromethane  
 Concen: 50.000 ug/l  
 RT: 6.93 min Scan# 559  
 Delta R.T. -0.01 min  
 Lab File: VD061999.D  
 Acq: 24 Apr 2019 15:53

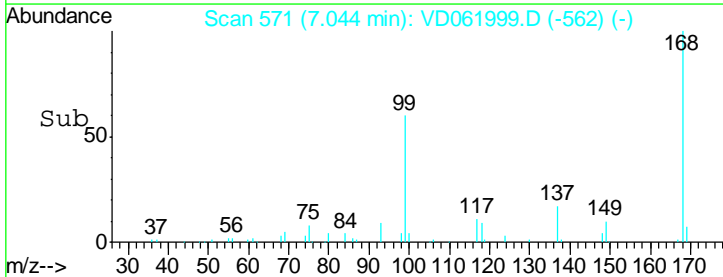
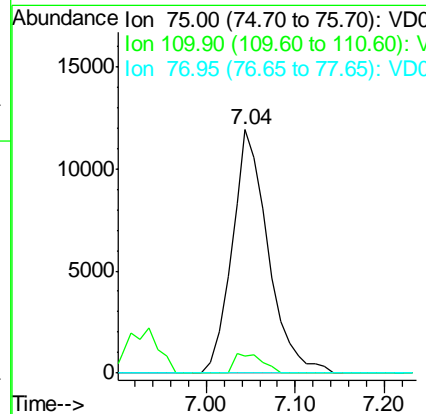
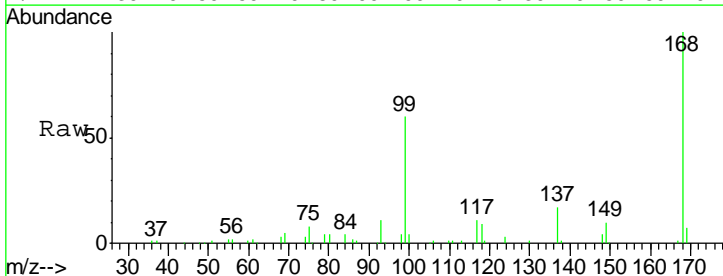
Instrument :  
 MSVOA\_D  
 ClientSampled :

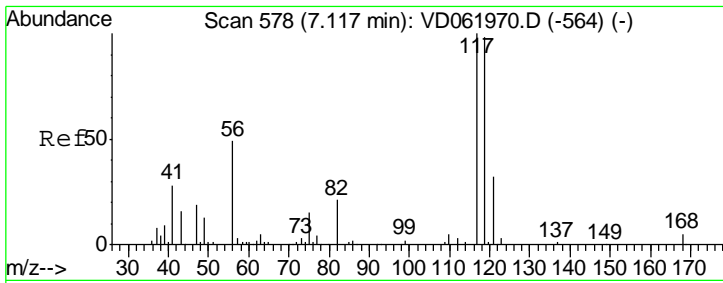
Tgt Ion	Resp	Lower	Upper
113	100		
111	97.8	78.5	117.7
192	16.1	13.0	19.4



#36  
 1,1-Dichloropropene  
 Concen: 5.476 ug/l  
 RT: 7.04 min Scan# 571  
 Delta R.T. -0.11 min  
 Lab File: VD061999.D  
 Acq: 24 Apr 2019 15:53

Tgt Ion	Resp	Lower	Upper
75	100		
110	7.0	19.1	57.1#
77	0.0	25.6	38.4#

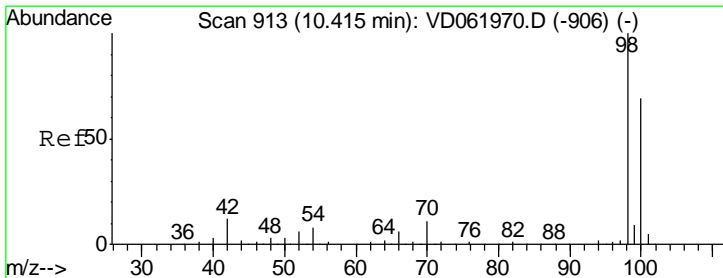
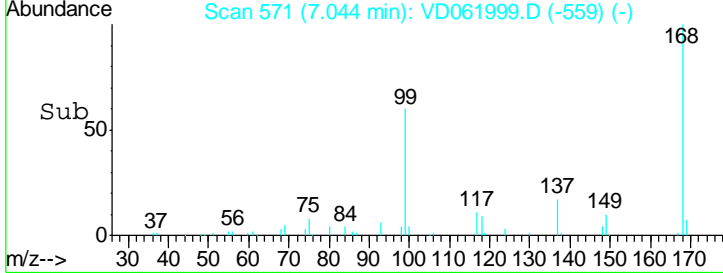
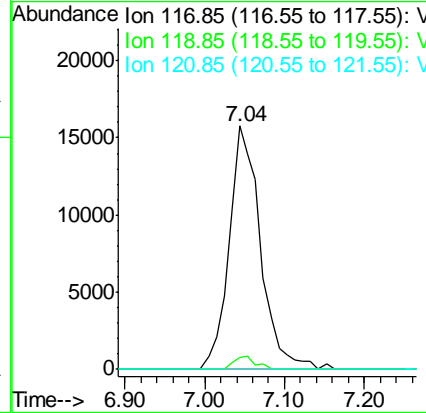
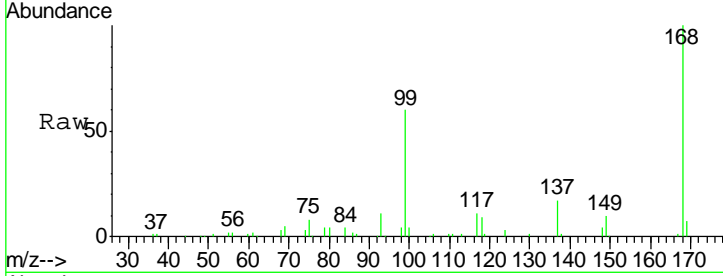




#38  
 Carbon Tetrachloride  
 Concen: 5.586 ug/l  
 RT: 7.04 min Scan# 571  
 Delta R.T. -0.08 min  
 Lab File: VD061999.D  
 Acq: 24 Apr 2019 15:53

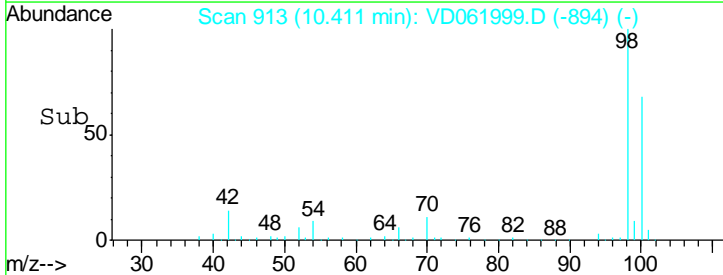
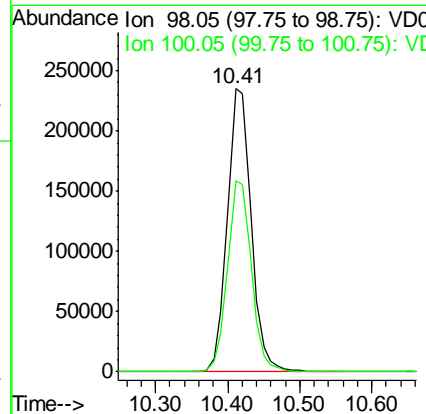
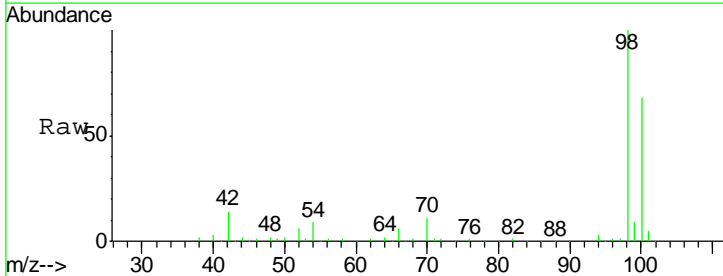
Instrument :  
 MSVOA\_D  
 ClientSampled :

Tgt Ion	Resp	Lower	Upper
117	43451		
119	5.0	75.8	113.8#
121	0.0	25.9	38.9#

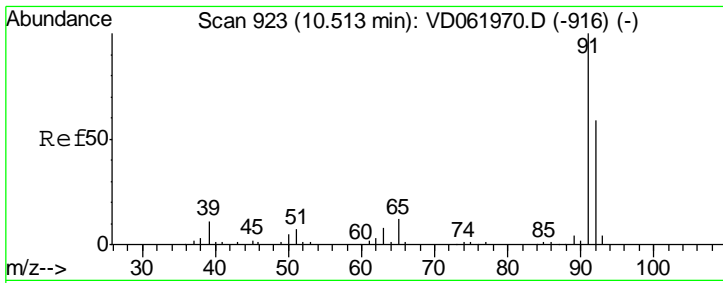


#50  
 Toluene-d8  
 Concen: N.D. ug/l  
 RT: 10.41 min Scan# 913  
 Delta R.T. -0.01 min  
 Lab File: VD061999.D  
 Acq: 24 Apr 2019 15:53

Tgt Ion	Resp	Lower	Upper
98	540214		
100	67.6	53.8	80.8



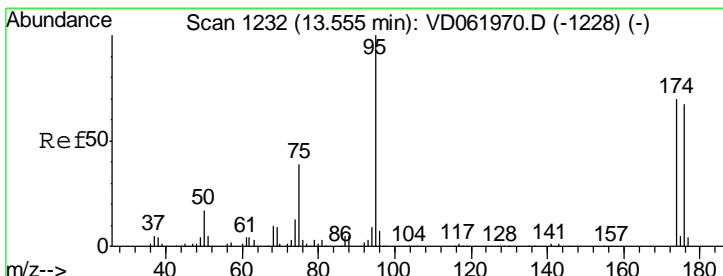
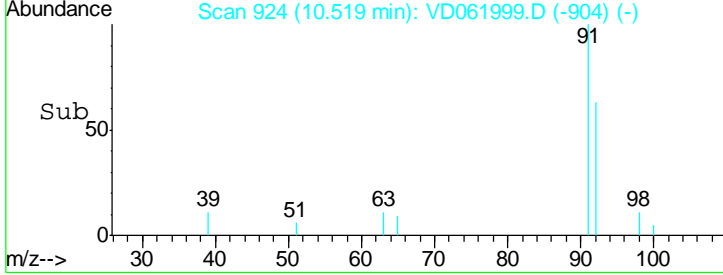
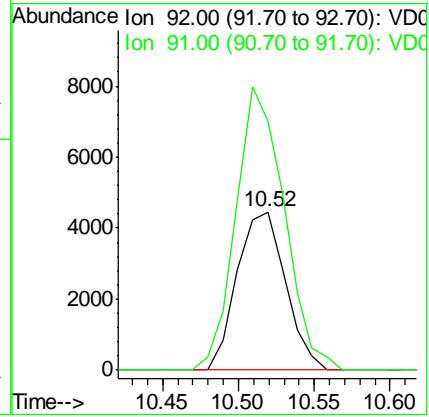
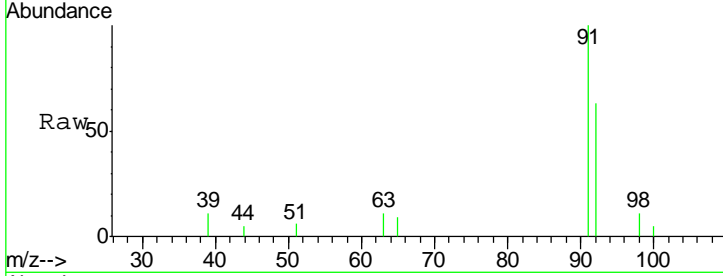




#52  
 Toluene  
 Concen: 1.021 ug/l  
 RT: 10.52 min Scan# 924  
 Delta R.T. 0.00 min  
 Lab File: VD061999.D  
 Acq: 24 Apr 2019 15:53

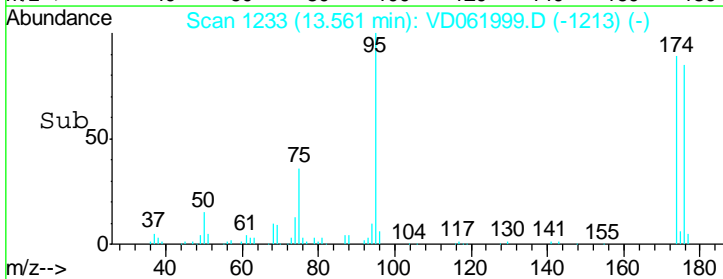
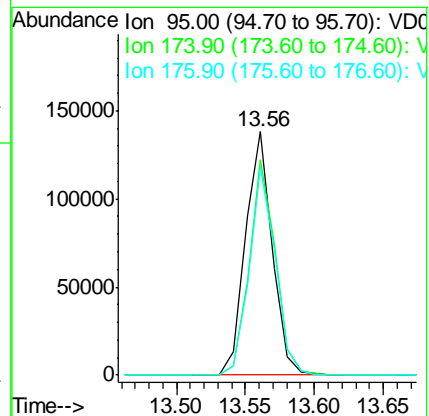
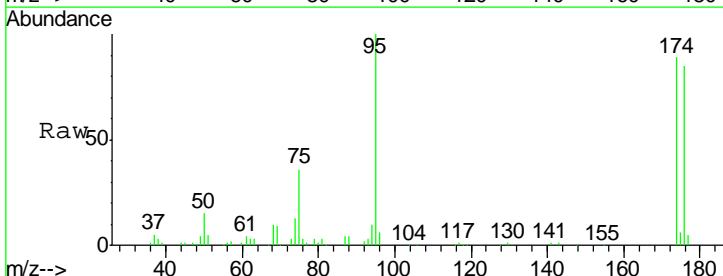
Instrument :  
 MSVOA\_D  
 ClientSampled :

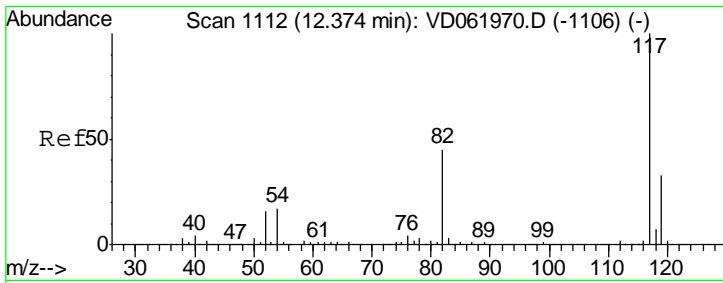
Tgt Ion	Resp	Lower	Upper
92	9890		
92	100		
91	157.8	136.6	204.8



#62  
 4-Bromofluorobenzene  
 Concen: N.D. ug/l  
 RT: 13.56 min Scan# 1233  
 Delta R.T. 0.00 min  
 Lab File: VD061999.D  
 Acq: 24 Apr 2019 15:53

Tgt Ion	Resp	Lower	Upper
95	187102		
95	100		
174	88.6	0.0	181.8
176	85.5	0.0	174.4



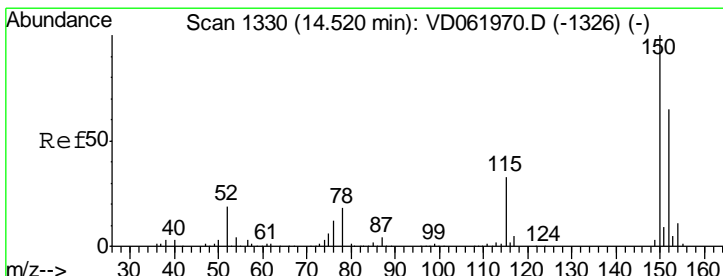
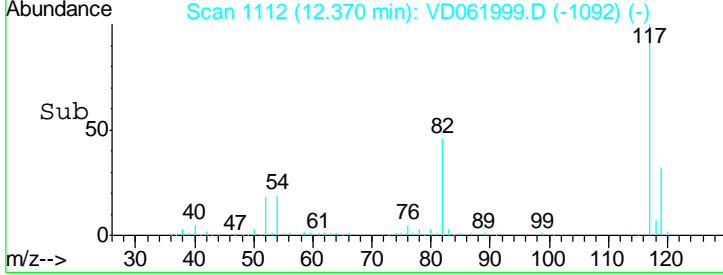
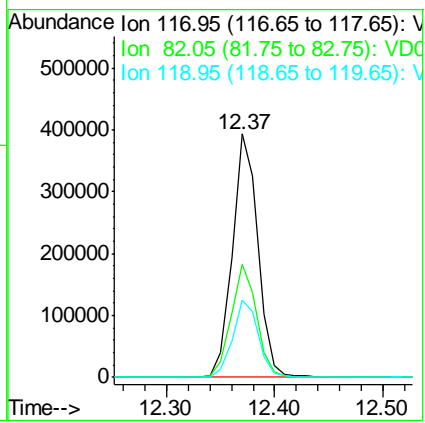
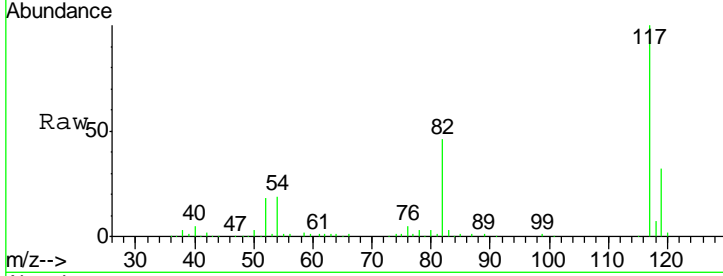


#63  
 Chlorobenzene-d5  
 Concen: 50.000 ug/l  
 RT: 12.37 min Scan# 1112  
 Delta R.T. 0.00 min  
 Lab File: VD061999.D  
 Acq: 24 Apr 2019 15:53

Instrument : MSVOA\_D  
 ClientSampled :

Tgt Ion: 117 Resp: 643038

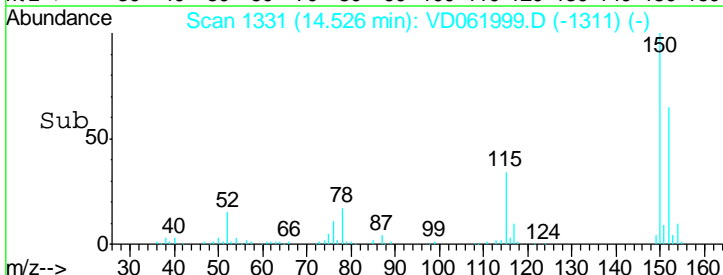
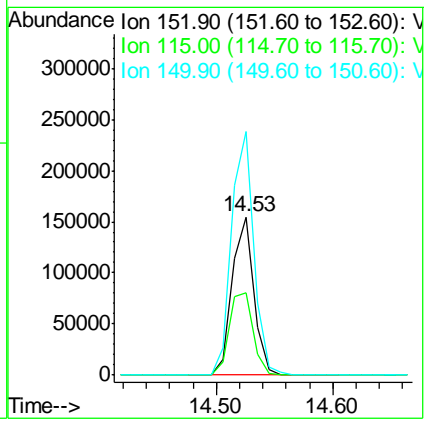
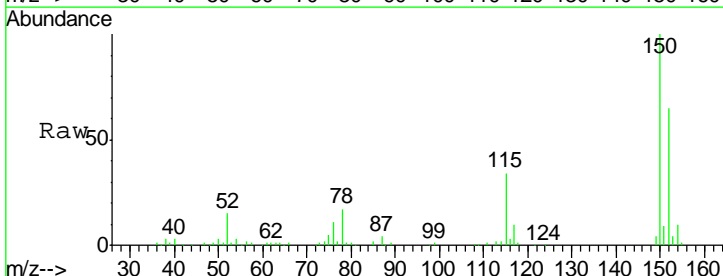
Ion	Ratio	Lower	Upper
117	100		
82	46.3	36.2	54.2
119	31.9	26.2	39.4

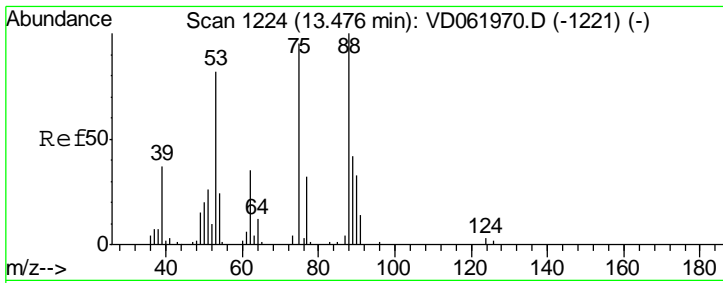


#72  
 1,4-Dichlorobenzene-d4  
 Concen: 50.000 ug/l  
 RT: 14.53 min Scan# 1331  
 Delta R.T. 0.00 min  
 Lab File: VD061999.D  
 Acq: 24 Apr 2019 15:53

Tgt Ion: 152 Resp: 199568

Ion	Ratio	Lower	Upper
152	100		
115	52.2	30.9	92.7
150	154.2	0.0	314.8

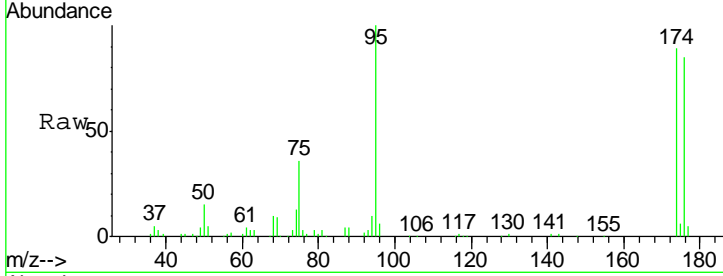




#81  
 trans-1,4-Dichloro-2-butene  
 Concen: 92.369 ug/l  
 RT: 13.56 min Scan# 1233  
 Delta R.T. 0.08 min  
 Lab File: VD061999.D  
 Acq: 24 Apr 2019 15:53

Instrument : MSVOA\_D  
 ClientSampled :

Tot Ion	75	Resp	70936
Ion Ratio	Lower	Upper	
75	100		
53	0.0	65.8	98.8#
89	0.0	35.0	52.6#



Abundance Ion 75.00 (74.70 to 75.70): VDC  
 Ion 53.00 (52.70 to 53.70): VDC  
 Ion 89.00 (88.70 to 89.70): VDC

