

Data Path : Z:\VOASRV\HPCHEM1\MSVOA D\DATA\VD042419\
 Data File : VD062007.D
 Acq On : 24 Apr 2019 19:51
 Operator : VA/AP
 Sample : K2532-10
 Misc : 6.03g/5ml/MSVOA D/SOIL
 ALS Vial : 21 Sample Multiplier: 1

Instrument :
 MSVOA_D
 ClientSampleId :
 TP-3-2

Integration Parameters: RTEINT.P

Integrator: RTE
 Smoothing : ON Filtering: 5
 Sampling : 1 Min Area: 3 % of largest Peak
 Start Thrs: 0.2 Max Peaks: 100
 Stop Thrs : 0 Peak Location: TOP

If leading or trailing edge < 100 prefer < Baseline drop else tangent >
 Peak separation: 5

Method : Z:\VOASRV\HPCHEM1\MSVOA_D\METHOD\82D042319S.M
 Title : SW846 8260

Signal : TIC

peak #	R.T. min	first scan	max scan	last scan	PK TY	peak height	corr. area	corr. % max.	% of total
1	1.483	4	6	22	rVB	355267	985681	89.59%	13.258%
2	3.216	177	182	192	rBV2	26153	82719	7.52%	1.113%
3	3.816	239	243	250	rBV	22848	61173	5.56%	0.823%
4	6.071	466	472	476	rBV2	6446	18008	1.64%	0.242%
5	6.927	553	559	565	rBV	222326	618298	56.20%	8.317%
6	7.045	565	571	585	rVB	317812	873026	79.35%	11.743%
7	7.449	606	612	623	rBV	159036	424990	38.63%	5.716%
8	8.217	684	690	706	rBV	410954	1027133	93.36%	13.816%
9	10.412	907	913	919	rBV	483643	1100180	100.00%	14.798%
10	10.511	919	923	929	rVB	30159	67272	6.11%	0.905%
11	12.371	1108	1112	1120	rBV	566803	967803	87.97%	13.018%
12	13.552	1229	1232	1240	rVB	384749	562275	51.11%	7.563%
13	13.986	1271	1276	1279	rVB	15130	22074	2.01%	0.297%
14	14.064	1282	1284	1287	rBV	16954	24529	2.23%	0.330%
15	14.517	1327	1330	1334	rBV	486442	599324	54.48%	8.061%

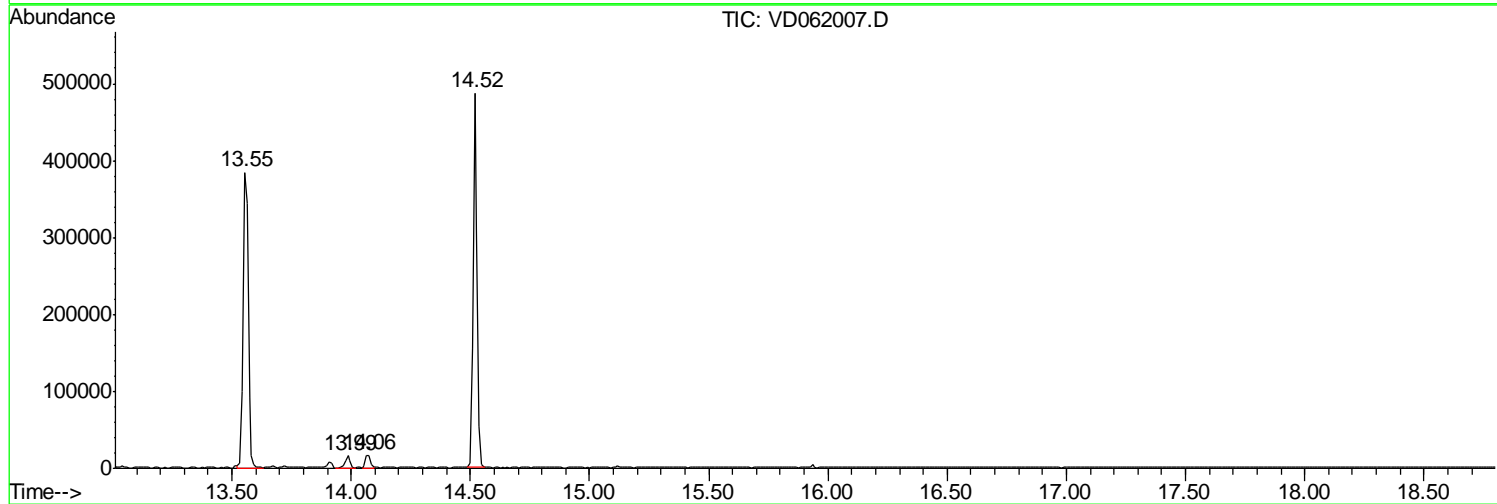
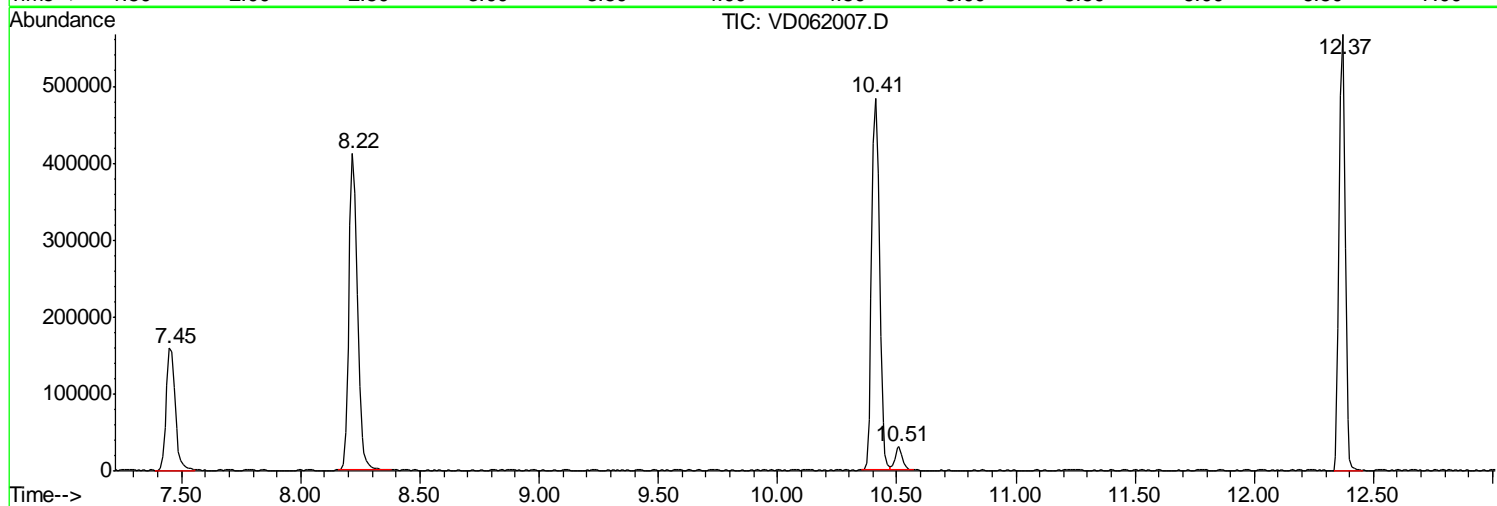
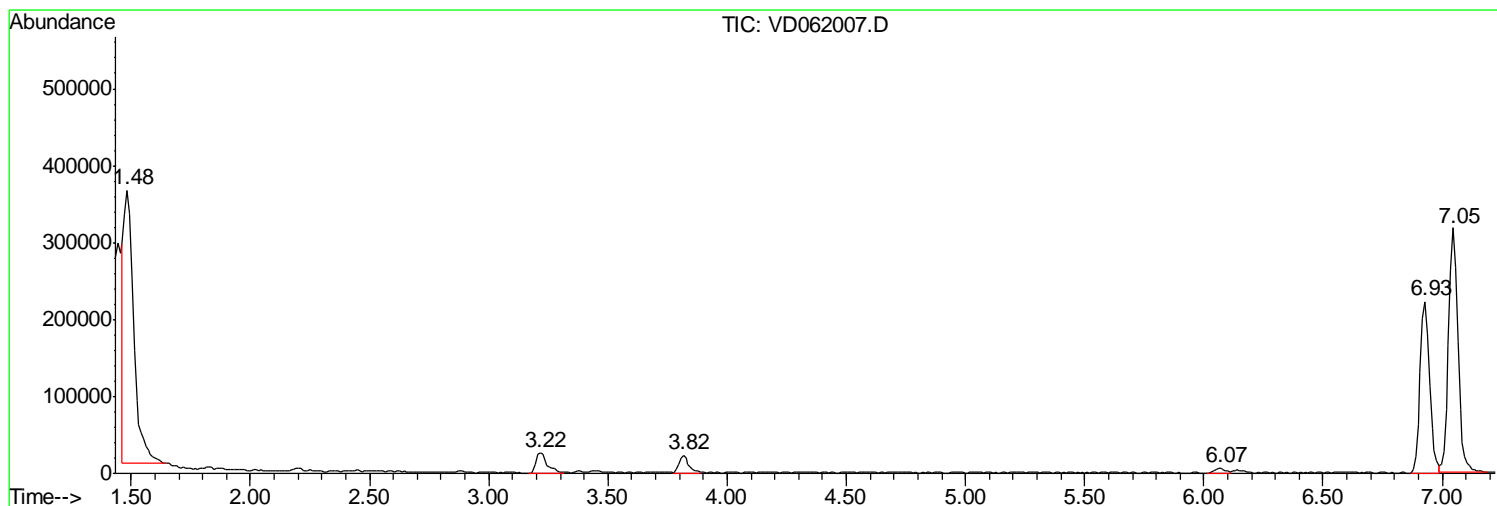
Sum of corrected areas: 7434485

Data Path : Z:\VOASRV\HPCHEM1\MSVOA D\DATA\VD042419\
 Data File : VD062007.D
 Acq On : 24 Apr 2019 19:51
 Operator : VA/AP
 Sample : K2532-10
 Misc : 6.03µ/5ml/MSVOA D/SOIL
 ALS Vial : 21 Sample Multiplier: 1

Instrument :
 MSVOA_D
 ClientSampleID :
 TP-3-2

Quant Method : Z:\VOASRV\HPCHEM1\MSVOA_D\METHOD\82D042319S.M
 Quant Title : SW846 8260

TIC Library : C:\DATABASE\NIST11.L
 TIC Integration Parameters: LSCINT.P



Data Path : Z:\VOASRV\HPCHEM1\MSVOA_D\DATA\VD042419\
Data File : VD062007.D
Acq On : 24 Apr 2019 19:51
Operator : VA/AP
Sample : K2532-10
Misc : 6.03g/5ml/MSVOA_D/SOIL
ALS Vial : 21 Sample Multiplier: 1

Instrument :
MSVOA_D
ClientSampleId :
TP-3-2

Quant Method : Z:\VOASRV\HPCHEM1\MSVOA_D\METHOD\82D042319S.M
Quant Title : SW846 8260

TIC Library : C:\DATABASE\NIST11.L
TIC Integration Parameters: LSCINT.P

No Library Search Compounds Detected

Data Path : Z:\VOASRV\HPCHEM1\MSVOA_D\DATA\VD042419\
Data File : VD062007.D
Acq On : 24 Apr 2019 19:51
Operator : VA/AP
Sample : K2532-10
Misc : 6.03g/5ml/MSVOA_D/SOIL
ALS Vial : 21 Sample Multiplier: 1

Instrument :
MSVOA_D
ClientSampleId :
TP-3-2

Quant Method : Z:\VOASRV\HPCHEM1\MSVOA_D\METHOD\82D042319S.M
Quant Title : SW846 8260

TIC Library : C:\DATABASE\NIST11.L
TIC Integration Parameters: LSCINT.P

TIC Top Hit name	RT	EstConc	Units	Response	--Internal Standard--			
					#	RT	Resp	Conc
