

Data Path : Z:\voasrv\HPCHEM1\MSVOA_D\Data\VD042523\
 Data File : VD075817.D
 Acq On : 25 Apr 2023 17:55
 Operator : KP/SY
 Sample : 02419-05RE
 Misc : 4.71G/10.00ml/MSVOA_D/SOIL
 ALS Vial : 15 Sample Multiplier: 1

Instrument :
 MSVOA_D
 ClientSampleId :
 EW920

Quant Time: Apr 26 02:43:41 2023
 Quant Method : Z:\voasrv\HPCHEM1\MSVOA_D\Method\SFAMDLM042023SMA.M
 Quant Title : SFAM01.0
 QLast Update : Wed Apr 26 02:39:47 2023
 Response via : Initial Calibration

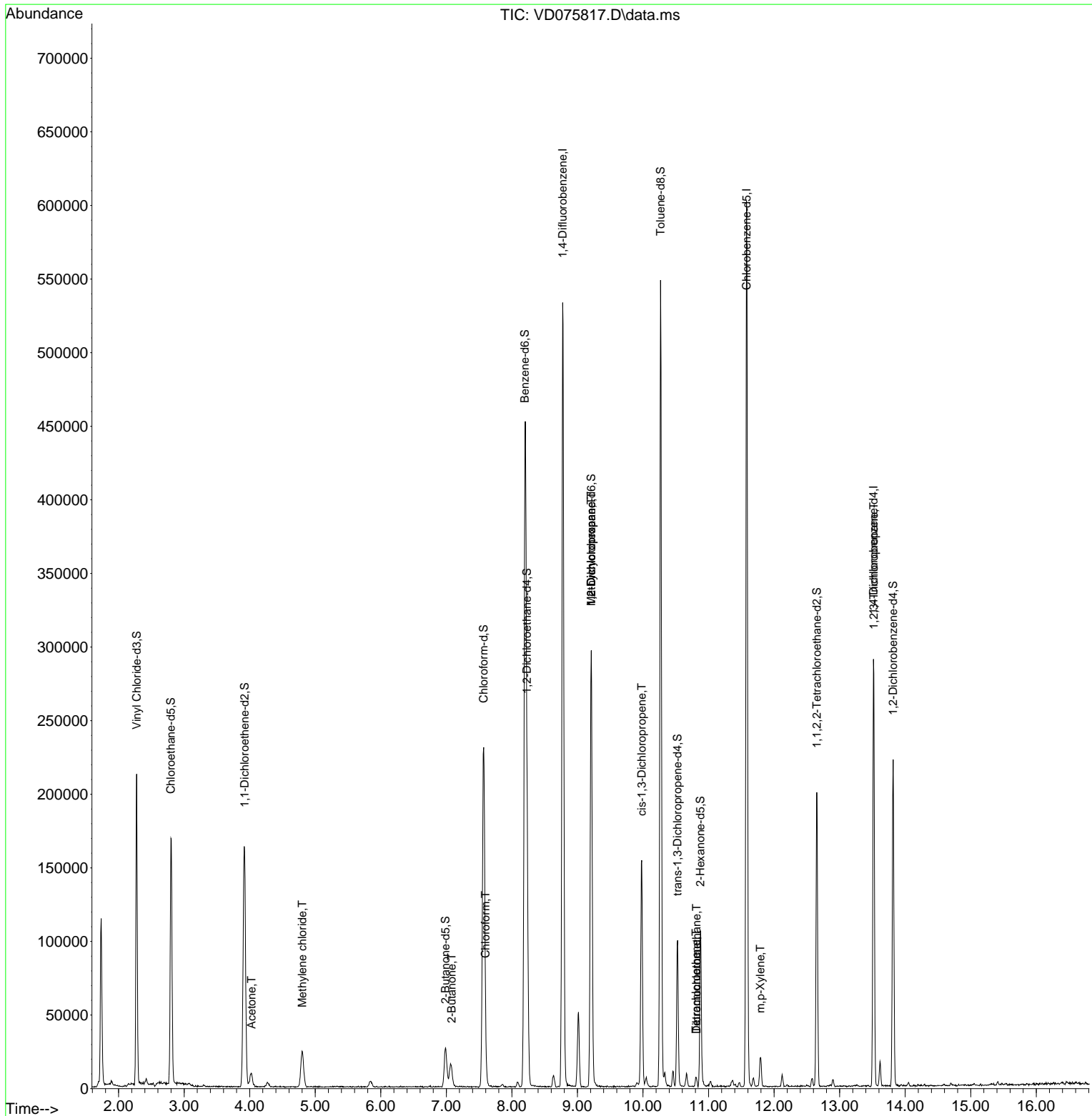
Compound	R.T.	QIon	Response	Conc	Units	Dev(Min)
Internal Standards						
1) 1,4-Difluorobenzene	8.775	114	517265	25.000	ug/L	0.00
28) Chlorobenzene-d5	11.581	117	389739	25.000	ug/L	0.00
58) 1,4-Dichlorobenzene-d4	13.516	152	88211	25.000	ug/L	0.00
System Monitoring Compounds						
4) Vinyl Chloride-d3	2.275	65	199552	17.586	ug/L	0.00
Spiked Amount	25.000	Range 30 - 150	Recovery =	70.360%		
7) Chloroethane-d5	2.799	69	187395	19.113	ug/L	0.00
Spiked Amount	25.000	Range 30 - 150	Recovery =	76.440%		
11) 1,1-Dichloroethene-d2	3.922	65	44842	17.141	ug/L	0.00
Spiked Amount	25.000	Range 45 - 110	Recovery =	68.560%		
21) 2-Butanone-d5	6.987	46	44071	44.738	ug/L	0.00
Spiked Amount	50.000	Range 20 - 135	Recovery =	89.480%		
24) Chloroform-d	7.569	84	256088	19.798	ug/L	0.00
Spiked Amount	25.000	Range 40 - 150	Recovery =	79.200%		
26) 1,2-Dichloroethane-d4	8.228	65	120806	21.870	ug/L	0.00
Spiked Amount	25.000	Range 70 - 130	Recovery =	87.480%		
32) Benzene-d6	8.199	84	519054	22.850	ug/L	0.00
Spiked Amount	25.000	Range 20 - 135	Recovery =	91.400%		
36) 1,2-Dichloropropane-d6	9.210	67	160179	25.476	ug/L	0.00
Spiked Amount	25.000	Range 70 - 120	Recovery =	101.920%		
41) Toluene-d8	10.269	98	399094	18.766	ug/L	0.00
Spiked Amount	25.000	Range 30 - 130	Recovery =	75.080%		
43) trans-1,3-Dichloroprop...	10.528	79	58756	22.608	ug/L	0.00
Spiked Amount	25.000	Range 30 - 135	Recovery =	90.440%		
47) 2-Hexanone-d5	10.875	63	38581	50.962	ug/L	0.00
Spiked Amount	50.000	Range 20 - 135	Recovery =	101.920%		
56) 1,1,2,2-Tetrachloroeth...	12.651	84	102893	21.386	ug/L	0.00
Spiked Amount	25.000	Range 45 - 120	Recovery =	85.560%		
66) 1,2-Dichlorobenzene-d4	13.816	152	66222	21.224	ug/L	0.00
Spiked Amount	25.000	Range 75 - 120	Recovery =	84.880%		
Target Compounds						
13) Acetone	4.028	43	14691	17.427	ug/L	60
16) Methylene chloride	4.805	84	22039	2.100	ug/L	97
22) 2-Butanone	7.081	43	2017	1.835	ug/L	75
25) Chloroform	7.599	83	13632	1.089	ug/L	86
35) Methylcyclohexane	9.210	83	39825	4.237	ug/L #	25
37) 1,2-Dichloropropane	9.210	63	15080	2.785	ug/L #	85
39) cis-1,3-Dichloropropene	9.981	75	3978	0.462	ug/L #	81
46) Tetrachloroethene	10.810	164	1659	0.332	ug/L	87
49) Dibromochloromethane	10.816	129	1548	0.309	ug/L #	10
53) m,p-Xylene	11.793	106	6293	0.604	ug/L	82
61) 1,2,3-Trichloropropane	13.522	75	10338	7.460	ug/L #	59

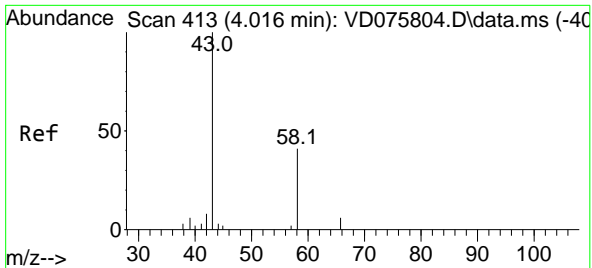
(#) = qualifier out of range (m) = manual integration (+) = signals summed

Data Path : Z:\voasrv\HPCHEM1\MSVOA_D\Data\VD042523\
 Data File : VD075817.D
 Acq On : 25 Apr 2023 17:55
 Operator : KP/SY
 Sample : 02419-05RE
 Misc : 4.71G/10.00mL/MSVOA_D/SOIL
 ALS Vial : 15 Sample Multiplier: 1

Instrument :
 MSVOA_D
 ClientSampleId :
 EW920

Quant Time: Apr 26 02:43:41 2023
 Quant Method : Z:\voasrv\HPCHEM1\MSVOA_D\Method\SFAMDLM042023SMA.M
 Quant Title : SFAM01.0
 QLast Update : Wed Apr 26 02:39:47 2023
 Response via : Initial Calibration

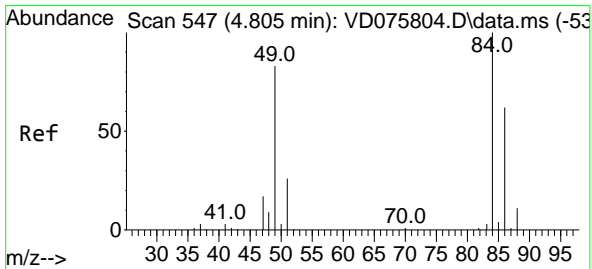
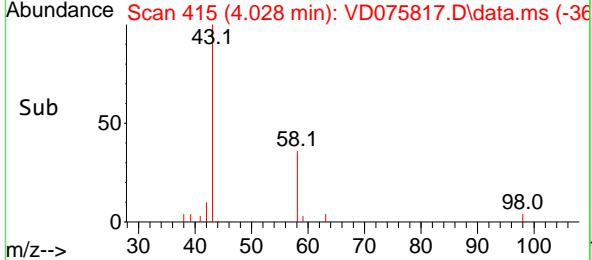
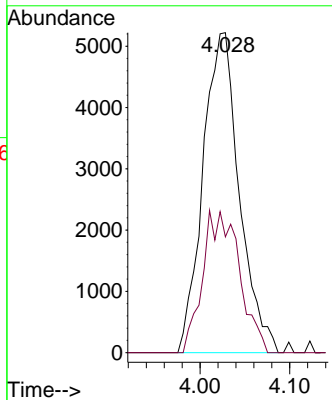
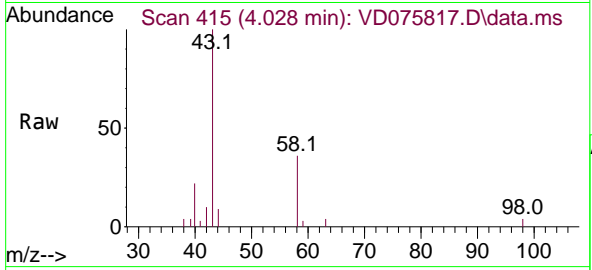




#13
 Acetone
 Concen: 17.427 ug/L
 RT: 4.028 min Scan# 413
 Delta R.T. 0.012 min
 Lab File: VD075817.D
 Acq: 25 Apr 2023 17:55

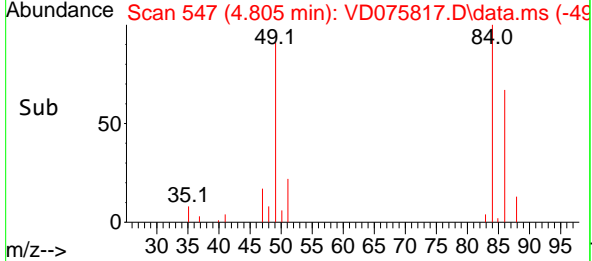
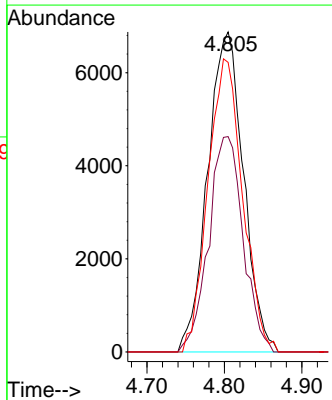
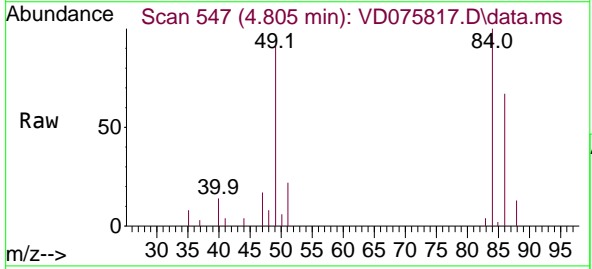
Instrument : MSVOA_D
 ClientSampleId : EW920

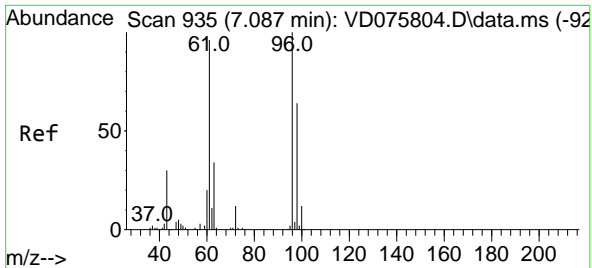
Tgt Ion	Resp	Lower	Upper
43	14691	100	
58	17.6	0.0	87.4



#16
 Methylene chloride
 Concen: 2.100 ug/L
 RT: 4.805 min Scan# 547
 Delta R.T. 0.000 min
 Lab File: VD075817.D
 Acq: 25 Apr 2023 17:55

Tgt Ion	Resp	Lower	Upper
84	22039	100	
86	67.3	45.8	85.2
49	90.5	60.8	112.8

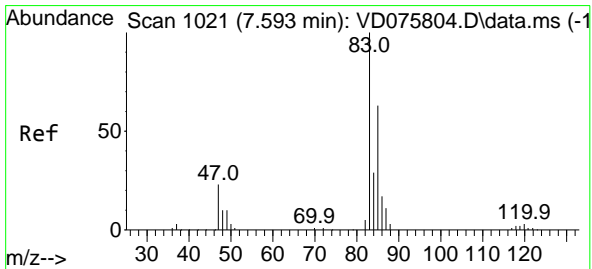
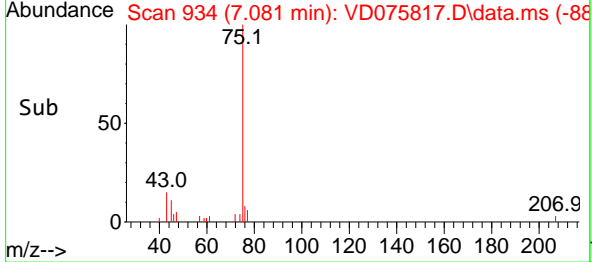
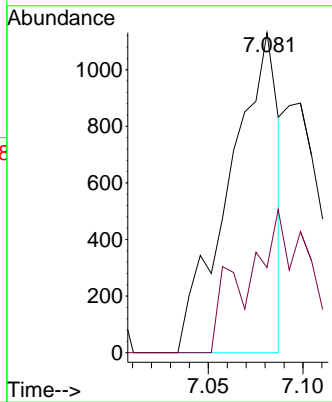
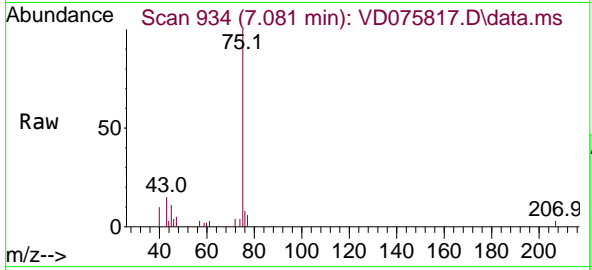




#22
 2-Butanone
 Concen: 1.835 ug/L
 RT: 7.081 min Scan# 91
 Delta R.T. -0.006 min
 Lab File: VD075817.D
 Acq: 25 Apr 2023 17:55

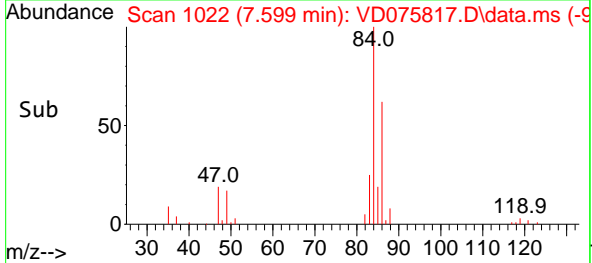
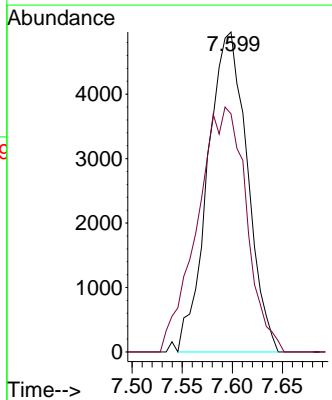
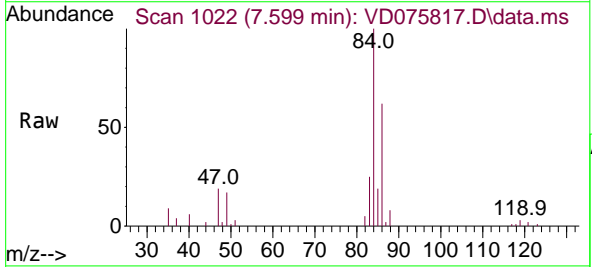
Instrument : MSVOA_D
 ClientSampleId : EW920

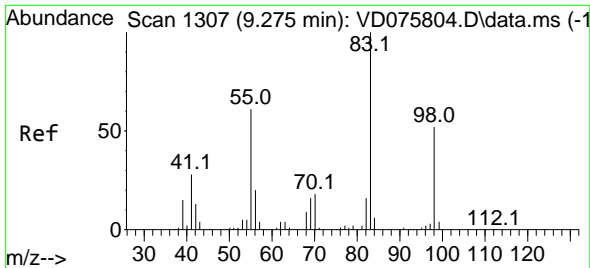
Tgt Ion: 43 Resp: 2017
 Ion Ratio Lower Upper
 43 100
 72 25.4 20.5 61.5



#25
 Chloroform
 Concen: 1.089 ug/L
 RT: 7.599 min Scan# 1022
 Delta R.T. 0.006 min
 Lab File: VD075817.D
 Acq: 25 Apr 2023 17:55

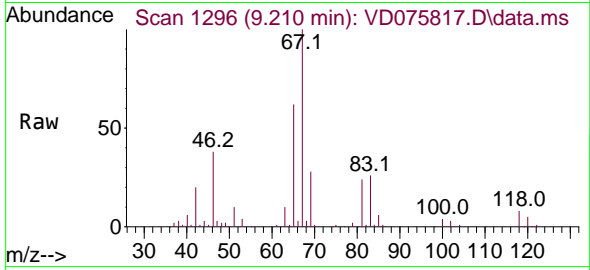
Tgt Ion: 83 Resp: 13632
 Ion Ratio Lower Upper
 83 100
 85 74.4 44.4 82.5



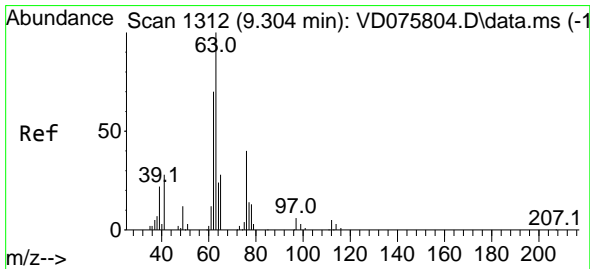
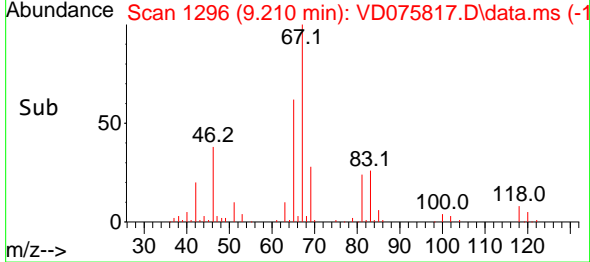
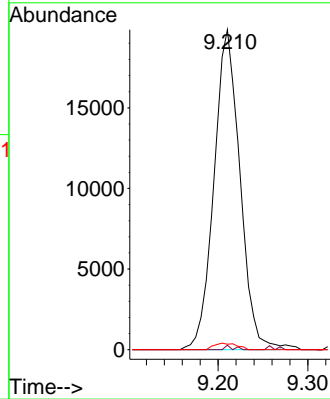


#35
 Methylcyclohexane
 Concen: 4.237 ug/L
 RT: 9.210 min Scan# 1296
 Delta R.T. -0.065 min
 Lab File: VD075817.D
 Acq: 25 Apr 2023 17:55

Instrument : MSVOA_D
 ClientSampleId : EW920

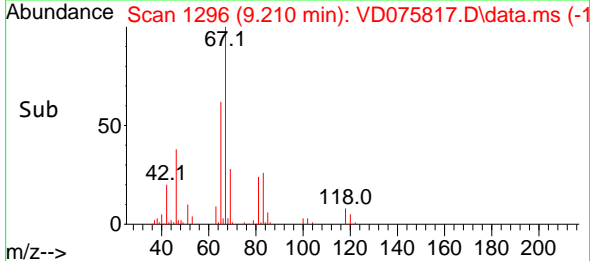
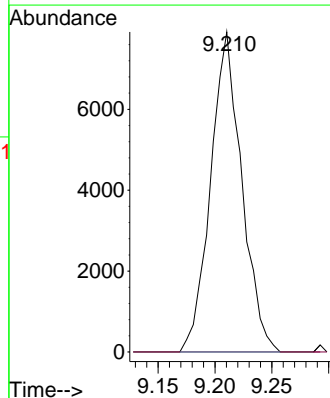
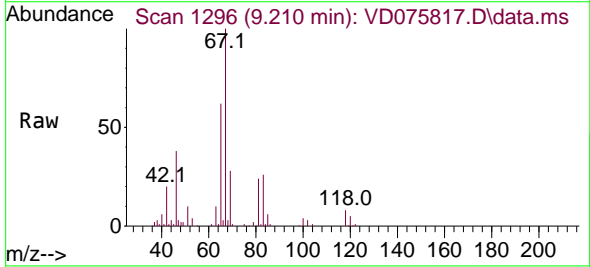


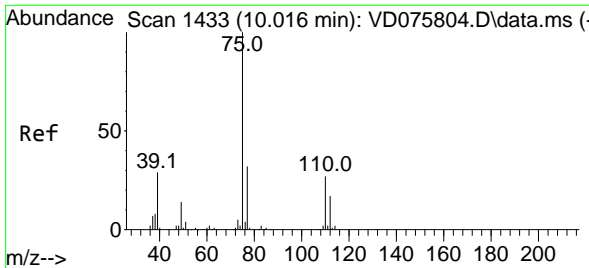
Tgt Ion: 83 Resp: 39825
 Ion Ratio Lower Upper
 83 100
 55 0.2 48.2 72.2#
 98 1.8 40.8 61.2#



#37
 1,2-Dichloropropane
 Concen: 2.785 ug/L
 RT: 9.210 min Scan# 1296
 Delta R.T. -0.094 min
 Lab File: VD075817.D
 Acq: 25 Apr 2023 17:55

Tgt Ion: 63 Resp: 15080
 Ion Ratio Lower Upper
 63 100
 112 0.0 4.0 6.0#

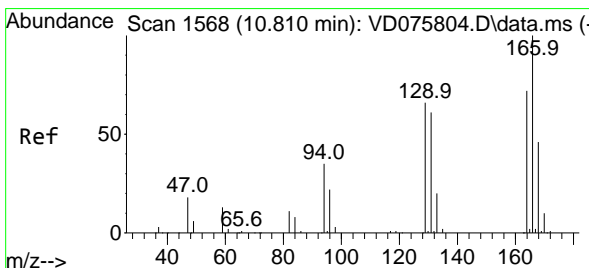
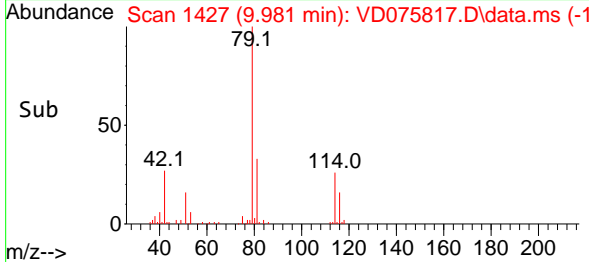
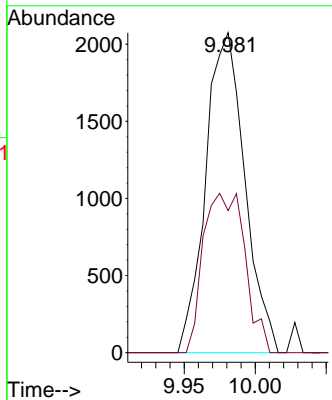
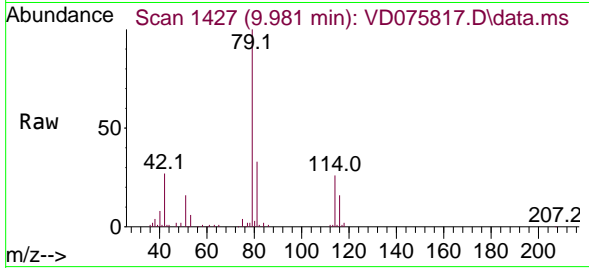




#39
 cis-1,3-Dichloropropene
 Concen: 0.462 ug/L
 RT: 9.981 min Scan# 1433
 Delta R.T. -0.035 min
 Lab File: VD075817.D
 Acq: 25 Apr 2023 17:55

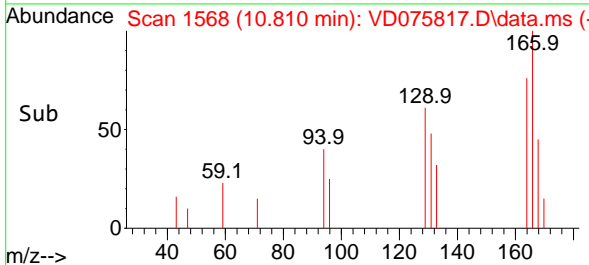
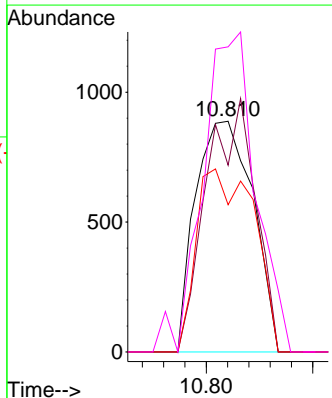
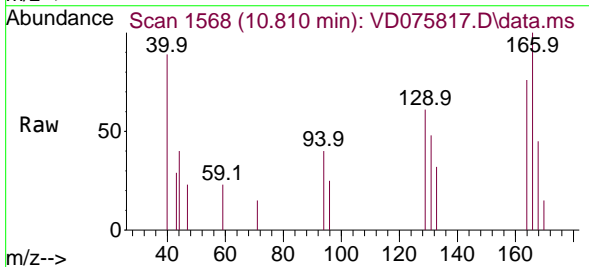
Instrument : MSVOA_D
 ClientSampleId : EW920

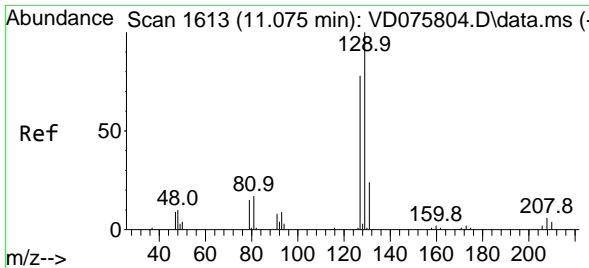
Tgt Ion: 75 Resp: 3978
 Ion Ratio Lower Upper
 75 100
 77 44.4 23.4 43.6#



#46
 Tetrachloroethene
 Concen: 0.332 ug/L
 RT: 10.810 min Scan# 1568
 Delta R.T. 0.000 min
 Lab File: VD075817.D
 Acq: 25 Apr 2023 17:55

Tgt Ion:164 Resp: 1659
 Ion Ratio Lower Upper
 164 100
 129 81.0 60.3 112.1
 131 63.9 58.9 109.3
 166 132.3 83.0 154.1

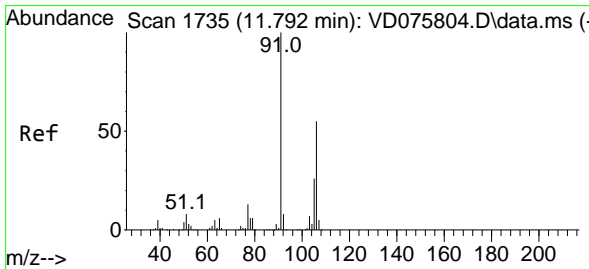
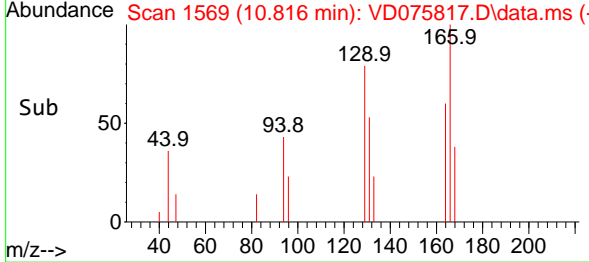
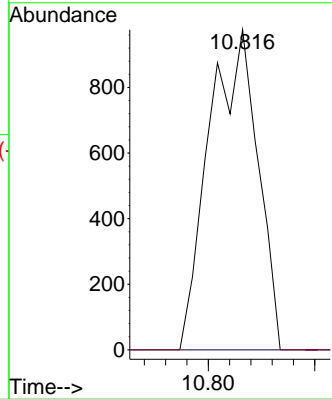
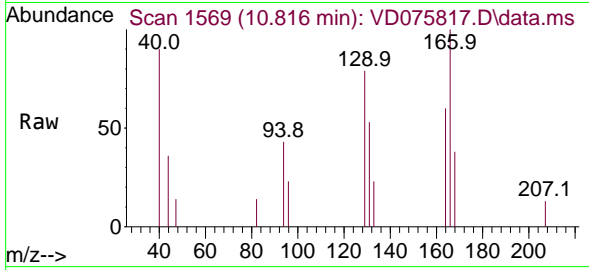




#49
 Dibromochloromethane
 Concen: 0.309 ug/L
 RT: 10.816 min Scan# 11
 Delta R.T. -0.259 min
 Lab File: VD075817.D
 Acq: 25 Apr 2023 17:55

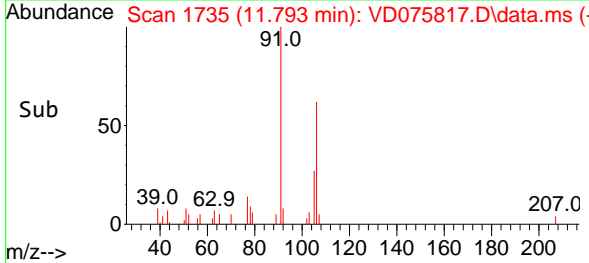
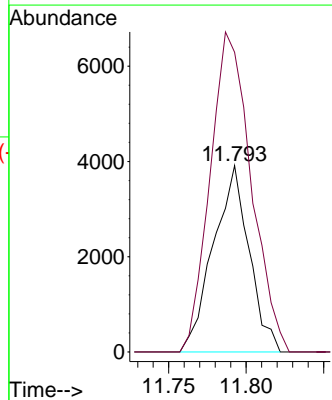
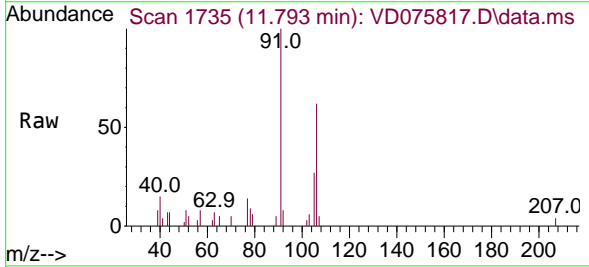
Instrument : MSVOA_D
 ClientSampleId : EW920

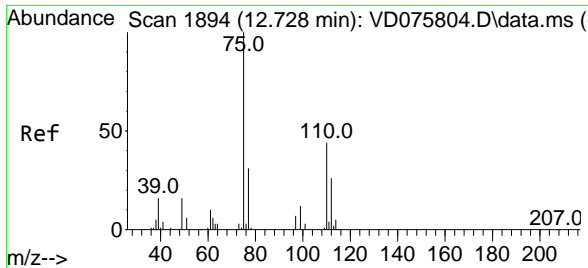
Tgt Ion:129 Resp: 1548
 Ion Ratio Lower Upper
 129 100
 127 0.0 55.6 103.4#



#53
 m,p-Xylene
 Concen: 0.604 ug/L
 RT: 11.793 min Scan# 1735
 Delta R.T. 0.000 min
 Lab File: VD075817.D
 Acq: 25 Apr 2023 17:55

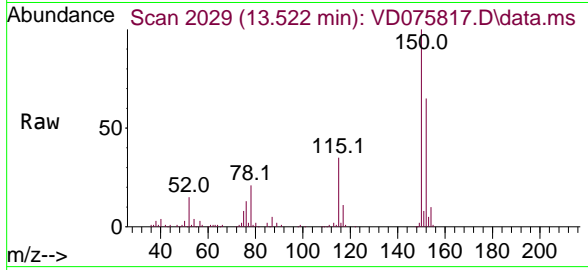
Tgt Ion:106 Resp: 6293
 Ion Ratio Lower Upper
 106 100
 91 160.7 130.9 243.1





#61
 1,2,3-Trichloropropane
 Concen: 7.460 ug/L
 RT: 13.522 min Scan# 20
 Delta R.T. 0.794 min
 Lab File: VD075817.D
 Acq: 25 Apr 2023 17:55

Instrument : MSVOA_D
 ClientSampleId : EW920



Tgt Ion: 75 Resp: 10338

Ion	Ratio	Lower	Upper
75	100		
77	27.2	26.6	39.8
110	1.2	33.5	50.3#

