

Data Path : Z:\voasrv\HPCHEM1\MSVOA\_D\Data\VD042523\  
 Data File : VD075819.D  
 Acq On : 25 Apr 2023 18:53  
 Operator : KP/SY  
 Sample : 02419-13  
 Misc : 4.32G/10.00ml/MSVOA\_D/SOIL  
 ALS Vial : 17 Sample Multiplier: 1

Instrument :  
 MSVOA\_D  
 ClientSampleId :

Quant Time: Apr 26 02:44:13 2023  
 Quant Method : Z:\voasrv\HPCHEM1\MSVOA\_D\Method\SFAMDLM042023SMA.M  
 Quant Title : SFAM01.0  
 QLast Update : Wed Apr 26 02:39:47 2023  
 Response via : Initial Calibration

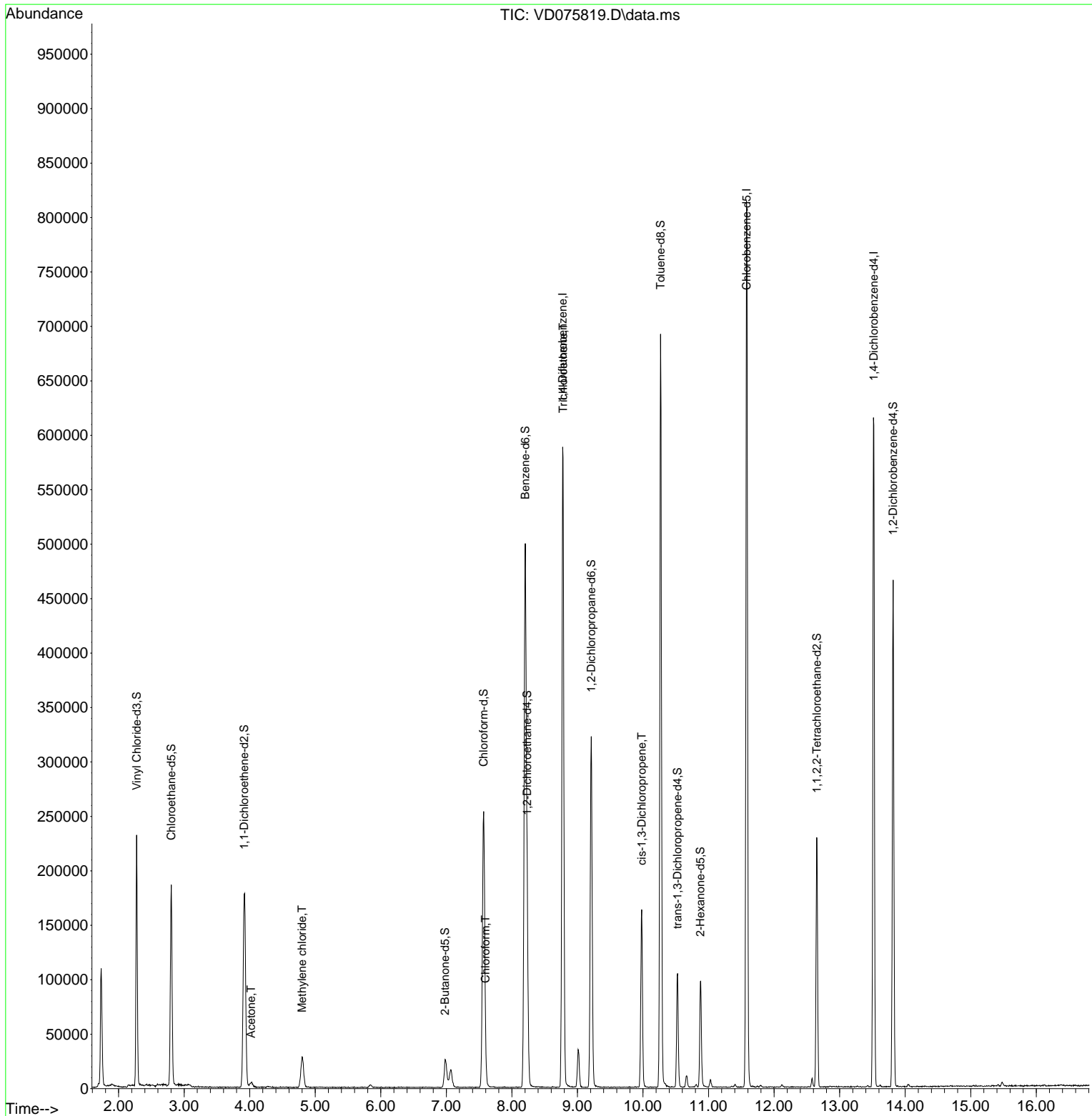
Compound	R.T.	QIon	Response	Conc	Units	Dev(Min)
Internal Standards						
1) 1,4-Difluorobenzene	8.775	114	573615	25.000	ug/L	0.00
28) Chlorobenzene-d5	11.581	117	526628	25.000	ug/L	0.00
58) 1,4-Dichlorobenzene-d4	13.522	152	185488	25.000	ug/L	0.00
System Monitoring Compounds						
4) Vinyl Chloride-d3	2.275	65	210946	16.764	ug/L	0.00
Spiked Amount	25.000	Range 30 - 150	Recovery =	67.040%		
7) Chloroethane-d5	2.805	69	195602	17.990	ug/L	0.00
Spiked Amount	25.000	Range 30 - 150	Recovery =	71.960%		
11) 1,1-Dichloroethene-d2	3.916	65	50141	17.283	ug/L	0.00
Spiked Amount	25.000	Range 45 - 110	Recovery =	69.120%		
21) 2-Butanone-d5	6.981	46	42321	38.741	ug/L	0.00
Spiked Amount	50.000	Range 20 - 135	Recovery =	77.480%		
24) Chloroform-d	7.569	84	280211	19.535	ug/L	0.00
Spiked Amount	25.000	Range 40 - 150	Recovery =	78.120%		
26) 1,2-Dichloroethane-d4	8.234	65	118568	19.356	ug/L	0.00
Spiked Amount	25.000	Range 70 - 130	Recovery =	77.440%		
32) Benzene-d6	8.204	84	572092	18.638	ug/L	0.00
Spiked Amount	25.000	Range 20 - 135	Recovery =	74.560%		
36) 1,2-Dichloropropane-d6	9.210	67	170885	20.114	ug/L	0.00
Spiked Amount	25.000	Range 70 - 120	Recovery =	80.440%		
41) Toluene-d8	10.269	98	507444	17.659	ug/L	0.00
Spiked Amount	25.000	Range 30 - 130	Recovery =	70.640%		
43) trans-1,3-Dichloroprop...	10.528	79	64280	18.305	ug/L	0.00
Spiked Amount	25.000	Range 30 - 135	Recovery =	73.200%		
47) 2-Hexanone-d5	10.875	63	38188	37.331	ug/L	0.00
Spiked Amount	50.000	Range 20 - 135	Recovery =	74.660%		
56) 1,1,2,2-Tetrachloroeth...	12.651	84	118480	18.224	ug/L	0.00
Spiked Amount	25.000	Range 45 - 120	Recovery =	72.880%		
66) 1,2-Dichlorobenzene-d4	13.816	152	132635	20.216	ug/L	0.00
Spiked Amount	25.000	Range 75 - 120	Recovery =	80.880%		
Target Compounds						
13) Acetone	4.022	43	7221	7.724	ug/L	75
16) Methylene chloride	4.799	84	25173	2.163	ug/L	96
25) Chloroform	7.599	83	10270	0.740	ug/L	81
34) Trichloroethene	8.781	95	14966	1.817	ug/L #	2
39) cis-1,3-Dichloropropene	9.981	75	4165	0.358	ug/L #	78

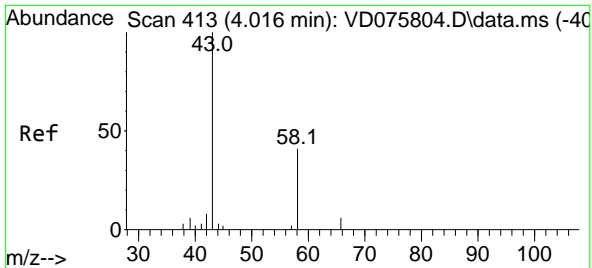
(#) = qualifier out of range (m) = manual integration (+) = signals summed

Data Path : Z:\voasrv\HPCHEM1\MSVOA\_D\Data\VD042523\  
 Data File : VD075819.D  
 Acq On : 25 Apr 2023 18:53  
 Operator : KP/SY  
 Sample : 02419-13  
 Misc : 4.32G/10.00ml/MSVOA\_D/SOIL  
 ALS Vial : 17 Sample Multiplier: 1

Instrument :  
 MSVOA\_D  
 ClientSampleId :

Quant Time: Apr 26 02:44:13 2023  
 Quant Method : Z:\voasrv\HPCHEM1\MSVOA\_D\Method\SFAMDLM042023SMA.M  
 Quant Title : SFAM01.0  
 QLast Update : Wed Apr 26 02:39:47 2023  
 Response via : Initial Calibration



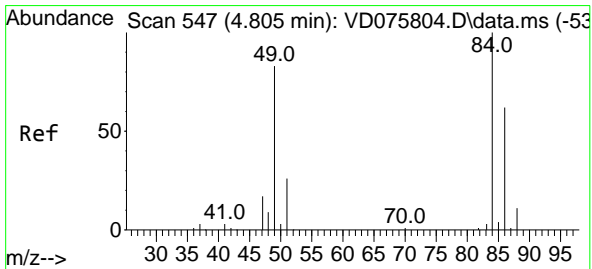
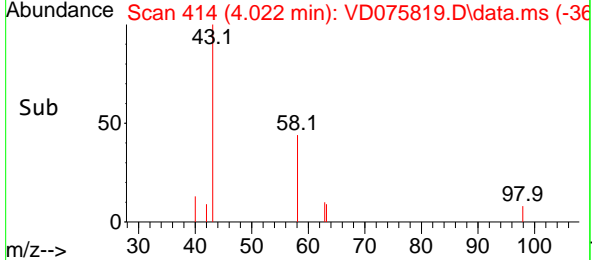
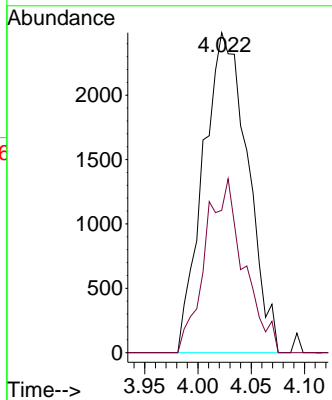
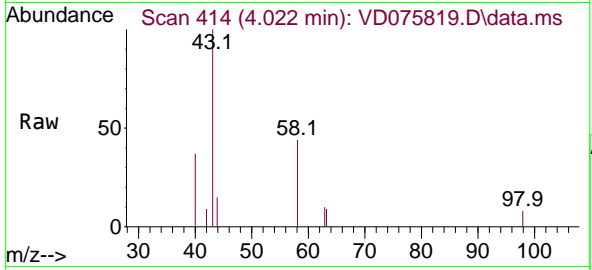


#13  
 Acetone  
 Concen: 7.724 ug/L  
 RT: 4.022 min Scan# 413  
 Delta R.T. 0.006 min  
 Lab File: VD075819.D  
 Acq: 25 Apr 2023 18:53

Instrument : MSVOA\_D  
 ClientSampleId :

Tgt Ion: 43 Resp: 7221

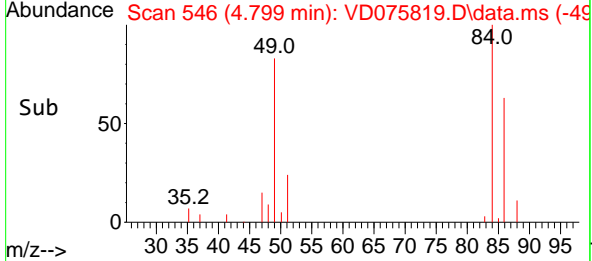
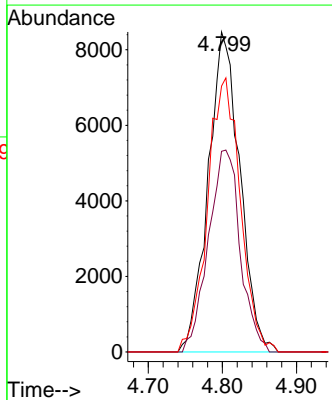
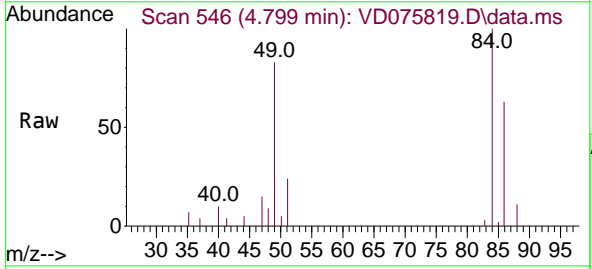
Ion	Ratio	Lower	Upper
43	100		
58	27.9	0.0	87.4

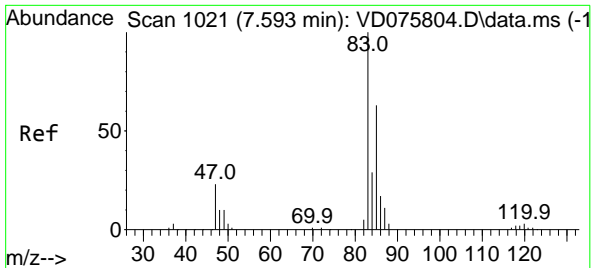


#16  
 Methylene chloride  
 Concen: 2.163 ug/L  
 RT: 4.799 min Scan# 546  
 Delta R.T. -0.006 min  
 Lab File: VD075819.D  
 Acq: 25 Apr 2023 18:53

Tgt Ion: 84 Resp: 25173

Ion	Ratio	Lower	Upper
84	100		
86	62.7	45.8	85.2
49	83.1	60.8	112.8

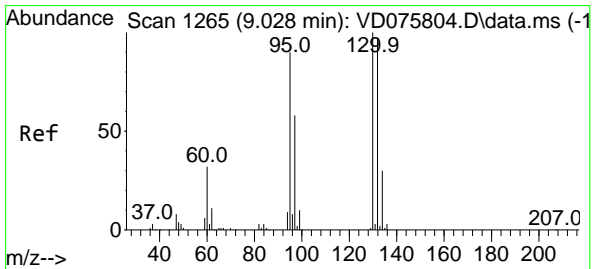
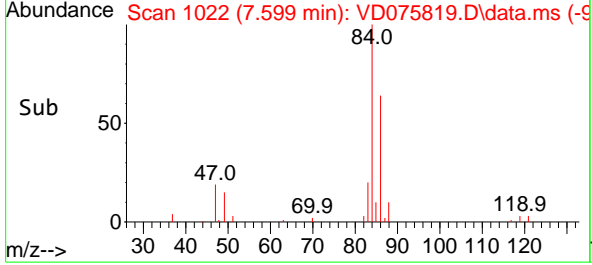
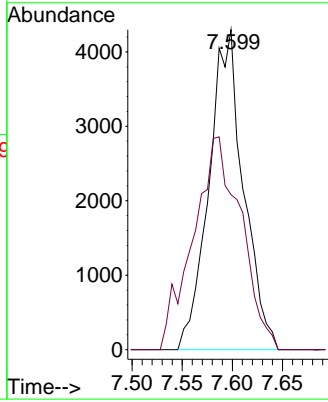
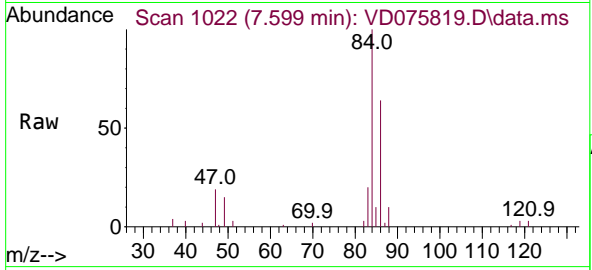




#25  
 Chloroform  
 Concen: 0.740 ug/L  
 RT: 7.599 min Scan# 1022  
 Delta R.T. 0.006 min  
 Lab File: VD075819.D  
 Acq: 25 Apr 2023 18:53

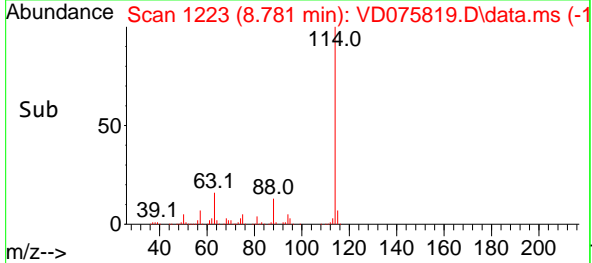
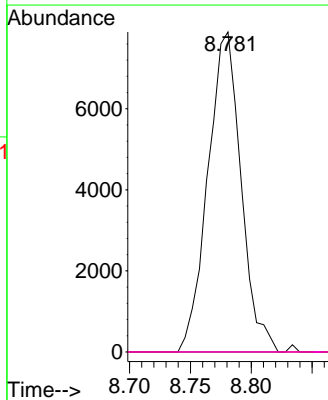
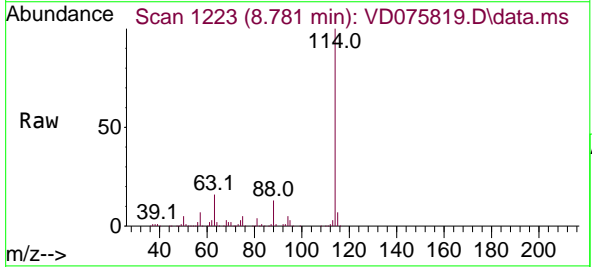
Instrument : MSVOA\_D  
 ClientSampleId :

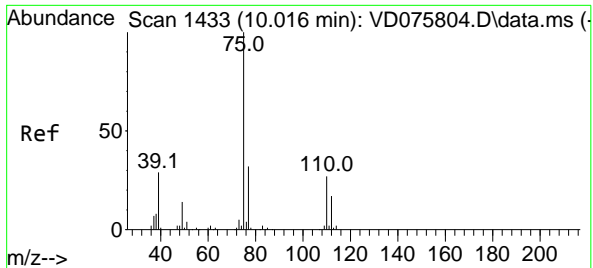
Tgt Ion: 83 Resp: 10270  
 Ion Ratio Lower Upper  
 83 100  
 85 48.5 44.4 82.5



#34  
 Trichloroethene  
 Concen: 1.817 ug/L  
 RT: 8.781 min Scan# 1223  
 Delta R.T. -0.247 min  
 Lab File: VD075819.D  
 Acq: 25 Apr 2023 18:53

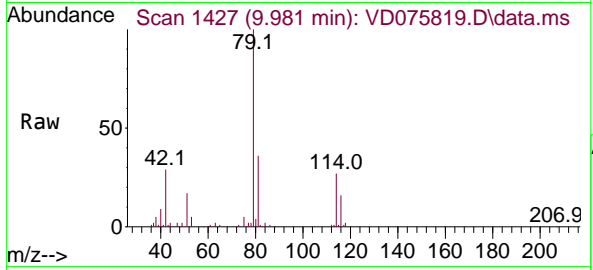
Tgt Ion: 95 Resp: 14966  
 Ion Ratio Lower Upper  
 95 100  
 97 0.0 46.0 85.4#  
 132 0.0 73.3 136.1#  
 130 0.0 75.3 139.9#





#39  
 cis-1,3-Dichloropropene  
 Concen: 0.358 ug/L  
 RT: 9.981 min Scan# 14  
 Delta R.T. -0.035 min  
 Lab File: VD075819.D  
 Acq: 25 Apr 2023 18:53

Instrument : MSVOA\_D  
 ClientSampleId :



Tgt Ion: 75 Resp: 4165

Ion	Ratio	Lower	Upper
75	100		
77	46.2	23.4	43.6#

