

Data Path : Z:\voasrv\HPCHEM1\MSVOA\_D\Data\VD042623\  
 Data File : VD075845.D  
 Acq On : 26 Apr 2023 20:06  
 Operator : KP/SY  
 Sample : 02447-17  
 Misc : 4.47G/10.00ml/MSVOA\_D/SOIL  
 ALS Vial : 23 Sample Multiplier: 1

Instrument :  
 MSVOA\_D  
 ClientSampleId :  
 EW937

Integration Parameters: LSCINT.P

Integrator: RTE  
 Smoothing : OFF  
 Sampling : 1  
 Start Thrs : 0.2  
 Stop Thrs : 0

Filtering: 5  
 Min Area: 0 % of largest Peak  
 Max Peaks: 100  
 Peak Location: TOP

If leading or trailing edge < 100 prefer < Baseline drop else tangent >  
 Peak separation: 5

Method : Z:\voasrv\HPCHEM1\MSVOA\_D\Method\SFAMDLM042023SMA.M  
 Title : SFAM01.0

Signal : TIC: VD075845.D\data.ms

peak #	R.T. min	first scan	max scan	last scan	PK TY	peak height	corr. area	corr. % max.	% of total
1	1.740	12	26	36	rBV	586738	1136483	77.85%	9.839%
2	2.087	84	85	88	rBV	867	880	0.06%	0.008%
3	2.276	111	117	126	rVB	229524	328767	22.52%	2.846%
4	2.593	167	171	173	rBV3	2656	4339	0.30%	0.038%
5	2.805	200	207	218	rVB	182469	343100	23.50%	2.970%
6	3.293	286	290	291	rBV	475	587	0.04%	0.005%
7	3.346	297	299	301	rBV	643	592	0.04%	0.005%
8	3.387	304	306	308	rVB	817	435	0.03%	0.004%
9	3.411	308	310	315	rBB	855	650	0.04%	0.006%
10	3.458	315	318	319	rBV2	544	459	0.03%	0.004%
11	3.517	326	328	330	rVB	708	484	0.03%	0.004%
12	3.540	330	332	335	rBV2	595	702	0.05%	0.006%
13	3.922	384	397	409	rBV	185617	486542	33.33%	4.212%
14	4.181	440	441	443	rBV2	806	497	0.03%	0.004%
15	4.281	456	458	463	rVB3	1117	1333	0.09%	0.012%
16	4.387	472	476	477	rVV2	817	848	0.06%	0.007%
17	4.546	500	503	505	rBV	693	789	0.05%	0.007%
18	4.611	511	514	515	rBV2	594	490	0.03%	0.004%
19	4.728	533	534	536	rVB	890	519	0.04%	0.004%
20	4.805	536	547	559	rBV2	22101	68987	4.73%	0.597%
21	5.034	584	586	588	rBV2	426	426	0.03%	0.004%
22	5.093	594	596	599	rVB2	650	594	0.04%	0.005%
23	5.252	620	623	625	rBV	679	756	0.05%	0.007%
24	5.446	652	656	657	rBV2	623	539	0.04%	0.005%
25	5.652	688	691	692	rBV2	608	439	0.03%	0.004%
26	5.687	696	697	699	rBV2	601	529	0.04%	0.005%
27	5.787	712	714	716	rVB	678	494	0.03%	0.004%
28	5.846	716	724	731	rVB4	2510	7212	0.49%	0.062%
29	5.911	733	735	738	rBV	667	529	0.04%	0.005%
30	6.281	795	798	801	rBV2	730	961	0.07%	0.008%
31	6.334	805	807	810	rVV2	470	570	0.04%	0.005%
32	6.405	814	819	820	rVB2	621	733	0.05%	0.006%
33	6.540	840	842	844	rVB2	655	484	0.03%	0.004%
34	6.705	867	870	872	rVB2	640	637	0.04%	0.006%
35	6.852	893	895	899	rVB	701	659	0.05%	0.006%
36	6.881	899	900	903	rBV2	584	456	0.03%	0.004%

Data Path : Z:\voasrv\HPCHEM1\MSVOA\_D\Data\VD042623\  
 Data File : VD075845.D  
 Acq On : 26 Apr 2023 20:06  
 Operator : KP/SY  
 Sample : 02447-17  
 Misc : 4.47G/10.00ml/MSVOA\_D/SOIL  
 ALS Vial : 23 Sample Multiplier: 1

Instrument :  
 MSVOA\_D  
 ClientSampleId :  
 EW937

Integration Parameters: LSCINT.P

Integrator: RTE  
 Smoothing : OFF  
 Sampling : 1  
 Start Thrs : 0.2  
 Stop Thrs : 0

Filtering: 5  
 Min Area: 0 % of largest Peak  
 Max Peaks: 100  
 Peak Location: TOP

If leading or trailing edge < 100 prefer < Baseline drop else tangent >  
 Peak separation: 5

Method : Z:\voasrv\HPCHEM1\MSVOA\_D\Method\SFAMDLM042023SMA.M  
 Title : SFAM01.0

37	6.916	903	906	908	rBV	938	857	0.06%	0.007%
38	6.987	910	918	930	rBV	27505	80233	5.50%	0.695%
39	7.258	963	964	968	rBV2	491	568	0.04%	0.005%
40	7.352	978	980	981	rBV	514	427	0.03%	0.004%
41	7.569	1006	1017	1028	rBV	274951	687803	47.12%	5.955%
42	7.822	1058	1060	1063	rVB2	575	530	0.04%	0.005%
43	7.887	1068	1071	1073	rBV2	1139	1196	0.08%	0.010%
44	7.946	1077	1081	1082	rBV2	554	681	0.05%	0.006%
45	8.046	1096	1098	1099	rBV2	622	521	0.04%	0.005%
46	8.205	1114	1125	1145	rBV2	505274	1459835	100.00%	12.639%
47	8.399	1156	1158	1160	rVB2	575	436	0.03%	0.004%
48	8.475	1170	1171	1176	rBV2	1089	1296	0.09%	0.011%
49	8.605	1191	1193	1196	rBV2	460	616	0.04%	0.005%
50	8.710	1209	1211	1213	rBV2	539	430	0.03%	0.004%
51	8.781	1213	1223	1235	rBV	591879	1197514	82.03%	10.368%
52	9.010	1259	1262	1268	rVB4	3064	5604	0.38%	0.049%
53	9.058	1268	1270	1271	rBV	634	449	0.03%	0.004%
54	9.128	1281	1282	1286	rBV2	698	799	0.05%	0.007%
55	9.210	1286	1296	1306	rBV	338661	696761	47.73%	6.032%
56	9.387	1324	1326	1329	rVB2	891	792	0.05%	0.007%
57	9.416	1329	1331	1332	rBV2	528	439	0.03%	0.004%
58	9.593	1359	1361	1363	rBV2	715	544	0.04%	0.005%
59	9.681	1374	1376	1377	rBV	903	475	0.03%	0.004%
60	9.787	1392	1394	1396	rBV2	419	472	0.03%	0.004%
61	9.834	1400	1402	1405	rBV2	1409	1467	0.10%	0.013%
62	9.981	1419	1427	1435	rBV	157506	294381	20.17%	2.549%
63	10.134	1451	1453	1456	rBV3	614	525	0.04%	0.005%
64	10.205	1463	1465	1467	rVB2	848	595	0.04%	0.005%
65	10.269	1467	1476	1496	rBV	672319	1216930	83.36%	10.536%
66	10.528	1513	1520	1531	rVB	98009	169964	11.64%	1.472%
67	10.599	1531	1532	1536	rBV2	626	443	0.03%	0.004%
68	10.663	1538	1543	1551	rVV3	7054	11313	0.77%	0.098%
69	10.722	1551	1553	1555	rVB2	895	691	0.05%	0.006%
70	10.752	1555	1558	1561	rBV3	604	867	0.06%	0.008%
71	10.875	1573	1579	1592	rBV	97632	177284	12.14%	1.535%
72	11.240	1639	1641	1644	rVB2	645	695	0.05%	0.006%
73	11.357	1658	1661	1665	rBV3	1698	1796	0.12%	0.016%
74	11.410	1668	1670	1672	rBV	670	480	0.03%	0.004%
75	11.434	1672	1674	1677	rBV	823	649	0.04%	0.006%
76	11.463	1677	1679	1682	rBV2	687	761	0.05%	0.007%

Data Path : Z:\voasrv\HPCHEM1\MSVOA\_D\Data\VD042623\  
 Data File : VD075845.D  
 Acq On : 26 Apr 2023 20:06  
 Operator : KP/SY  
 Sample : 02447-17  
 Misc : 4.47G/10.00ml/MSVOA\_D/SOIL  
 ALS Vial : 23 Sample Multiplier: 1

Instrument :  
 MSVOA\_D  
 ClientSampleId :  
 EW937

Integration Parameters: LSCINT.P

Integrator: RTE  
 Smoothing : OFF                   Filtering: 5  
 Sampling : 1                        Min Area: 0 % of largest Peak  
 Start Thrs: 0.2                    Max Peaks: 100  
 Stop Thrs : 0                      Peak Location: TOP

If leading or trailing edge < 100 prefer < Baseline drop else tangent >  
 Peak separation: 5

Method : Z:\voasrv\HPCHEM1\MSVOA\_D\Method\SFAMDLM042023SMA.M  
 Title : SFAM01.0

77	11.581	1691	1699	1713	rBV	753706	1279312	87.63%	11.076%
78	11.799	1733	1736	1739	rVB3	1513	1793	0.12%	0.016%
79	12.051	1777	1779	1782	rBV2	516	516	0.04%	0.004%
80	12.075	1782	1783	1785	rVB2	841	432	0.03%	0.004%
81	12.110	1787	1789	1790	rBV2	938	683	0.05%	0.006%
82	12.216	1805	1807	1809	rBV2	750	659	0.05%	0.006%
83	12.357	1828	1831	1834	rBV2	627	959	0.07%	0.008%
84	12.493	1852	1854	1856	rBV2	887	632	0.04%	0.005%
85	12.575	1865	1868	1874	rVB2	8949	12871	0.88%	0.111%
86	12.651	1874	1881	1888	rBV	230579	376011	25.76%	3.255%
87	12.716	1890	1892	1894	rVB	880	514	0.04%	0.004%
88	12.793	1903	1905	1906	rBV2	498	473	0.03%	0.004%
89	13.181	1968	1971	1973	rBV	637	738	0.05%	0.006%
90	13.340	1997	1998	1999	rBV	1061	442	0.03%	0.004%
91	13.428	2010	2013	2017	rVB3	2431	3020	0.21%	0.026%
92	13.463	2017	2019	2021	rBV3	1051	958	0.07%	0.008%
93	13.522	2021	2029	2036	rBV	466967	769164	52.69%	6.659%
94	13.716	2057	2062	2068	rVB4	2567	4428	0.30%	0.038%
95	13.816	2072	2079	2088	rVB	351243	574746	39.37%	4.976%
96	14.051	2114	2119	2125	rVB2	10788	17279	1.18%	0.150%
97	14.957	2271	2273	2275	rBV2	1099	944	0.06%	0.008%
98	15.181	2310	2311	2313	rBV2	836	578	0.04%	0.005%
99	15.334	2331	2337	2345	rVB	48040	82060	5.62%	0.710%
100	15.410	2347	2350	2354	rVB3	6672	9479	0.65%	0.082%

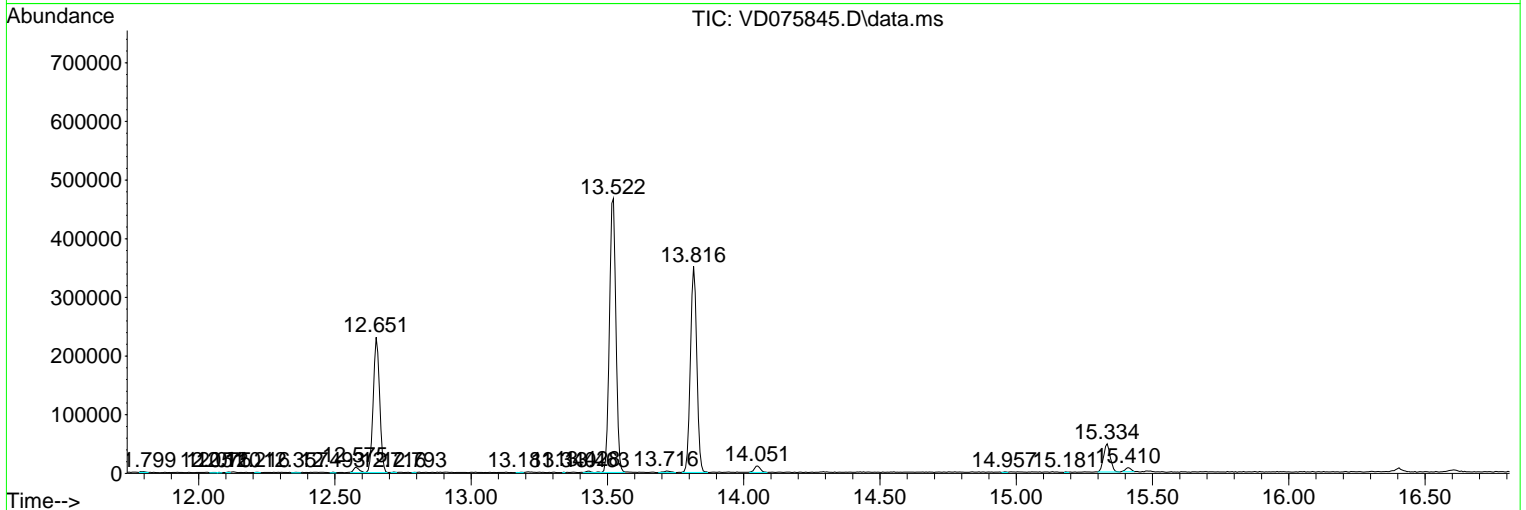
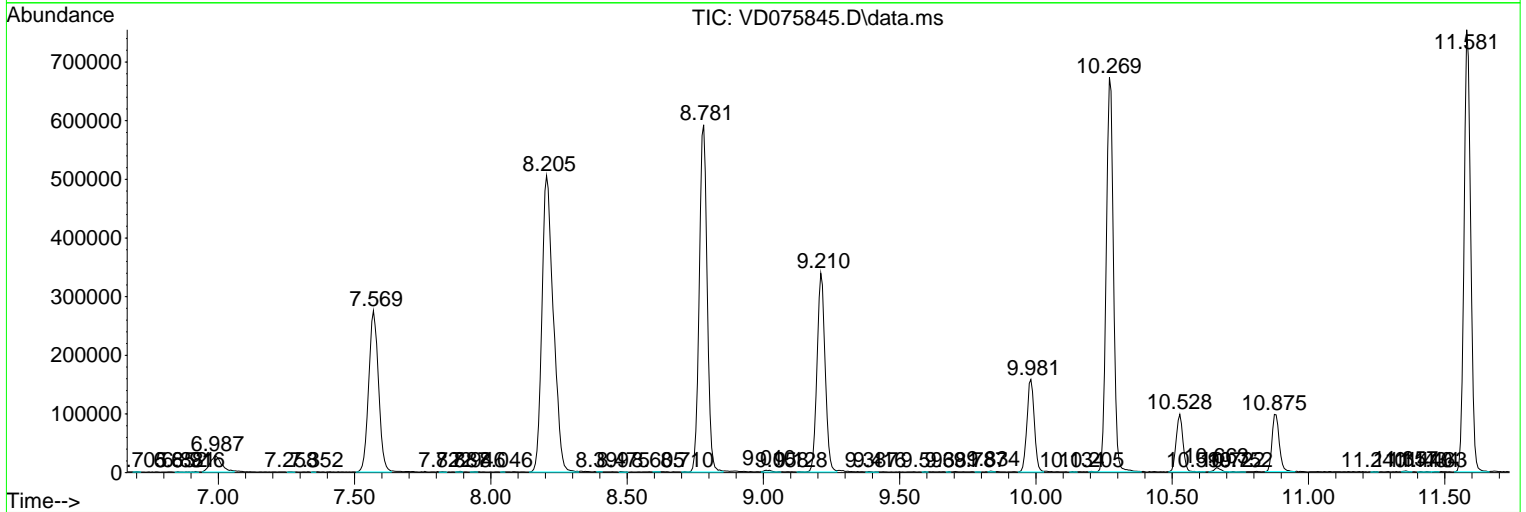
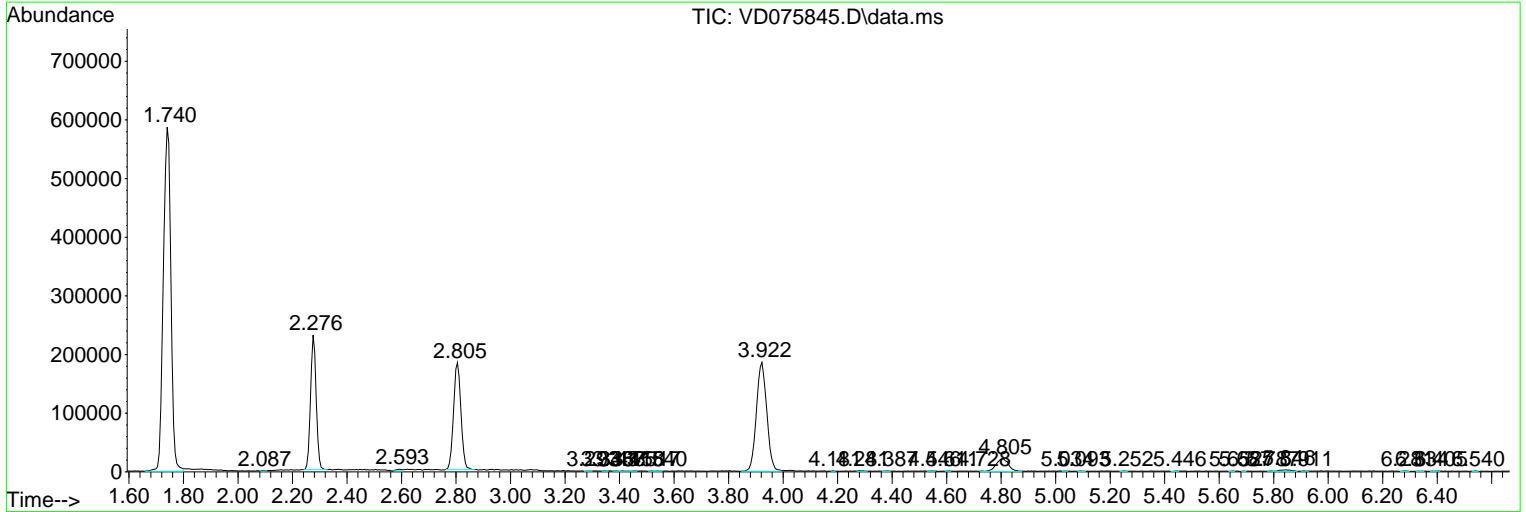
Sum of corrected areas: 11550311

Data Path : Z:\voasrv\HPCHEM1\MSVOA\_D\Data\VD042623\  
 Data File : VD075845.D  
 Acq On : 26 Apr 2023 20:06  
 Operator : KP/SY  
 Sample : 02447-17  
 Misc : 4.47G/10.00ml/MSVOA\_D/SOIL  
 ALS Vial : 23 Sample Multiplier: 1

Instrument :  
 MSVOA\_D  
 ClientSampleId :  
 EW937

Quant Method : Z:\voasrv\HPCHEM1\MSVOA\_D\Method\SFAMDLM042023SMA.M  
 Quant Title : SFAM01.0

TIC Library : C:\Database\NIST20.L  
 TIC Integration Parameters: LSCINT.P



Data Path : Z:\voasrv\HPCHEM1\MSVOA\_D\Data\VD042623\  
 Data File : VD075845.D  
 Acq On : 26 Apr 2023 20:06  
 Operator : KP/SY  
 Sample : 02447-17  
 Misc : 4.47G/10.00ml/MSVOA\_D/SOIL  
 ALS Vial : 23 Sample Multiplier: 1

Instrument :  
 MSVOA\_D  
 ClientSampleId :  
 EW937

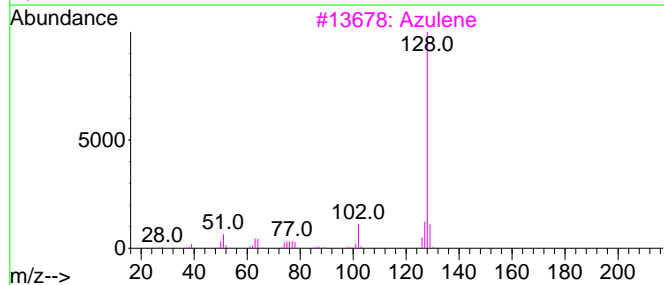
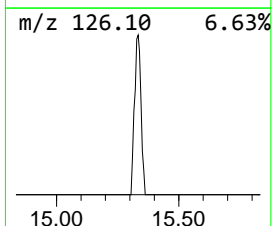
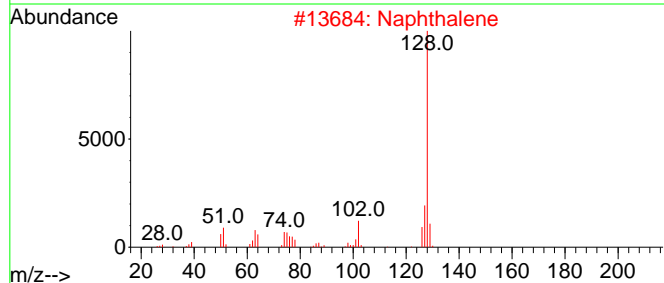
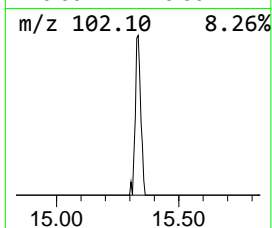
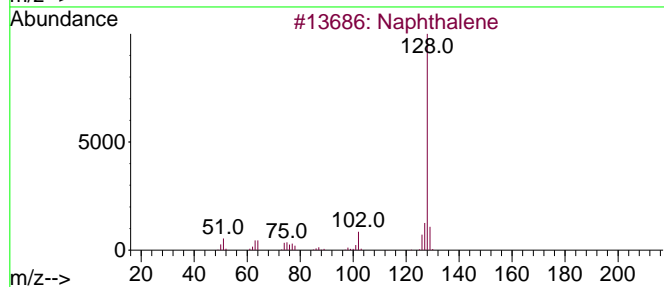
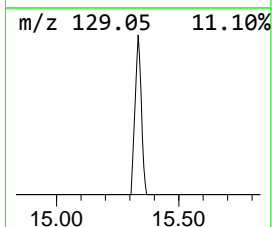
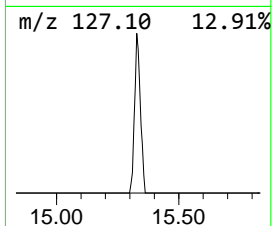
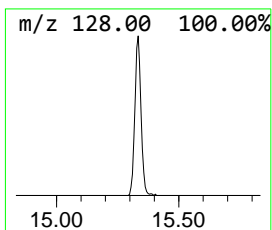
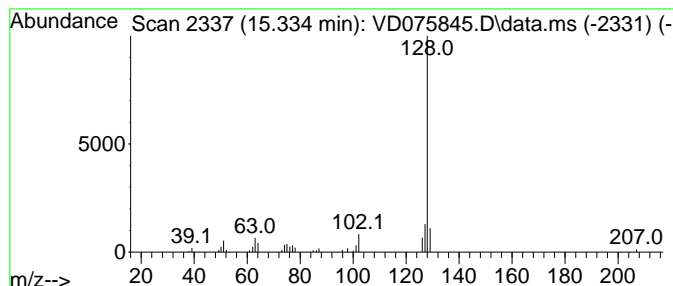
Quant Method : Z:\voasrv\HPCHEM1\MSVOA\_D\Method\SFAMDLM042023SMA.M  
 Quant Title : SFAM01.0

TIC Library : C:\Database\NIST20.L  
 TIC Integration Parameters: LSCINT.P

\*\*\*\*\*  
 Peak Number 3 Azulene Concentration Rank 3

R.T.	EstConc	Area	Relative to ISTD	R.T.
15.334	2.67 ug/L	82060	1,4-Dichlorobenzene-d4	13.522

Hit#	of	Tentative ID	MW	MolForm	CAS#	Qual
1	5	Naphthalene	128	C10H8	000091-20-3	95
2		Naphthalene	128	C10H8	000091-20-3	91
3		Azulene	128	C10H8	000275-51-4	90
4		Azulene	128	C10H8	000275-51-4	90
5		Naphthalene	128	C10H8	000091-20-3	90



Data Path : Z:\voasrv\HPCHEM1\MSVOA\_D\Data\VD042623\  
Data File : VD075845.D  
Acq On : 26 Apr 2023 20:06  
Operator : KP/SY  
Sample : 02447-17  
Misc : 4.47G/10.00ml/MSVOA\_D/SOIL  
ALS Vial : 23 Sample Multiplier: 1

Instrument :  
MSVOA\_D  
ClientSampleId :  
EW937

Quant Method : Z:\voasrv\HPCHEM1\MSVOA\_D\Method\SFAMDLM042023SMA.M  
Quant Title : SFAM01.0

TIC Library : C:\Database\NIST20.L  
TIC Integration Parameters: LSCINT.P

TIC Top Hit name	RT	EstConc	Units	Response	--Internal Standard--			
					#	RT	Resp	Conc
Azulene	15.334	2.7	ug/L	82060	3	13.522	769164	25.0