

Data Path : Z:\VOASRV\HPCHEM1\MSVOA_D\DATA\VD042919\
 Data File : VD062064.D
 Acq On : 29 Apr 2019 15:55
 Operator : FY/SY
 Sample : K2582-02RE
 Misc : 5.56gm/5mL/MSVOA_D/SOIL
 ALS Vial : 6 Sample Multiplier: 1

Instrument :
 MSVOA_D
 ClientSampleId :
 SSSI-0419-S-DH-6-TRE

Quant Time: Apr 29 16:29:00 2019
 Quant Method : Z:\VOASRV\HPCHEM1\MSVOA_D\METHOD\82D042319S.M
 Quant Title : SW846 8260
 QLast Update : Tue Apr 23 14:52:55 2019
 Response via : Initial Calibration

Internal Standards	R.T.	QIon	Response	Conc	Units	Dev(Min)
1) Pentafluorobenzene	7.01	168	594762	50.00	ug/l	-0.04
34) 1,4-Difluorobenzene	8.18	114	886368	50.00	ug/l	-0.04
63) Chlorobenzene-d5	12.35	117	825753	50.00	ug/l	-0.02
72) 1,4-Dichlorobenzene-d4	14.50	152	361228	50.00	ug/l	-0.02

System Monitoring Compounds

33) 1,2-Dichloroethane-d4	7.42	65	256206	55.04	ug/l	-0.04
Spiked Amount	50.000		Recovery	=	110.08%	
35) Dibromofluoromethane	6.89	113	370472	60.44	ug/l	-0.05
Spiked Amount	50.000		Recovery	=	120.88%	
50) Toluene-d8	10.38	98	796966	54.64	ug/l	-0.04
Spiked Amount	50.000		Recovery	=	109.28%	
62) 4-Bromofluorobenzene	13.54	95	313758	53.63	ug/l	-0.02
Spiked Amount	50.000		Recovery	=	107.26%	

Target Compounds

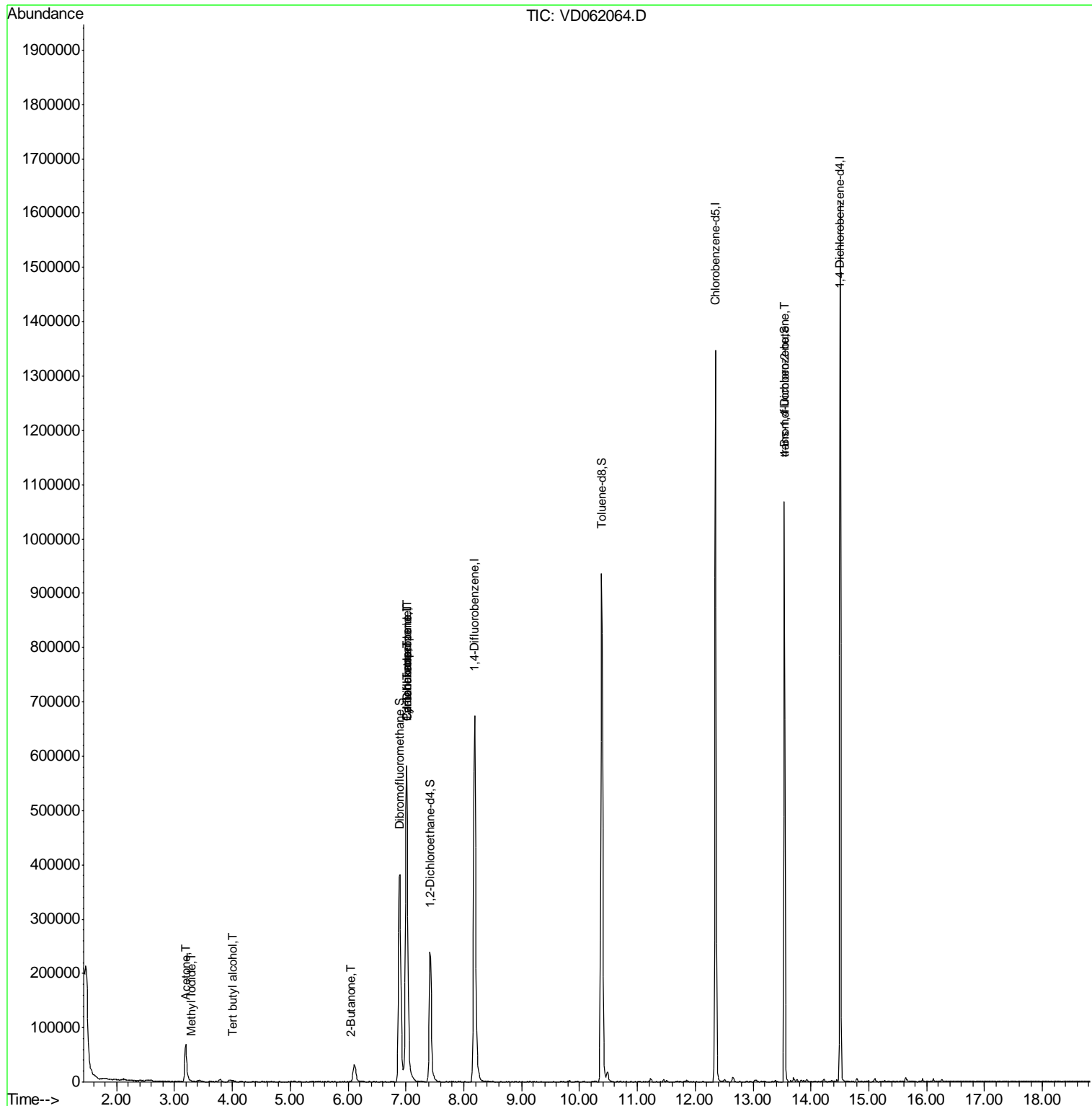
					Qvalue	
10) Methyl Iodide	3.28	142	1404	5.573	ug/l #	37
11) Tert butyl alcohol	4.01	59	4898	18.623	ug/l #	76
16) Acetone	3.19	43	129677	116.672	ug/l	99
18) Methyl Acetate	3.62	43	2479	Below Cal		92
20) Methylene Chloride	3.79	84	3763	Below Cal	#	85
25) 2-Butanone	6.04	43	1783	1.323	ug/l #	56
31) Cyclohexane	7.01	56	11096	1.600	ug/l #	1
36) 1,1-Dichloropropene	7.01	75	42624	6.172	ug/l #	46
38) Carbon Tetrachloride	7.01	117	58338	6.667	ug/l #	16
81) trans-1,4-Dichloro-2-buten	13.54	75	122035	87.791	ug/l #	16

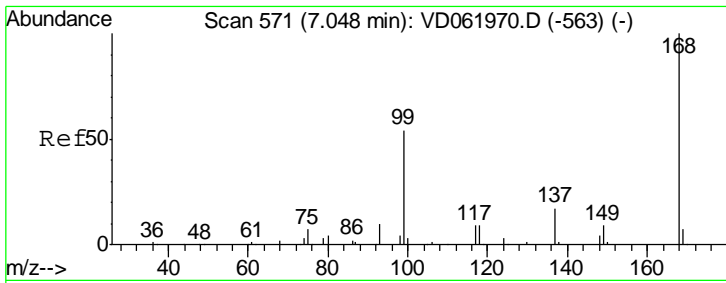
(#) = qualifier out of range (m) = manual integration (+) = signals summed

Data Path : Z:\VOASRV\HPCHEM1\MSVOA_D\DATA\VD042919\
 Data File : VD062064.D
 Acq On : 29 Apr 2019 15:55
 Operator : FY/SY
 Sample : K2582-02RE
 Misc : 5.56gm/5mL/MSVOA_D/SOIL
 ALS Vial : 6 Sample Multiplier: 1

Instrument :
 MSVOA_D
Client SampleID :
 SSSI-0419-S-DH-6-TRE

Quant Time: Apr 29 16:29:00 2019
 Quant Method : Z:\VOASRV\HPCHEM1\MSVOA_D\METHOD\82D042319S.M
 Quant Title : SW846 8260
 QLast Update : Tue Apr 23 14:52:55 2019
 Response via : Initial Calibration

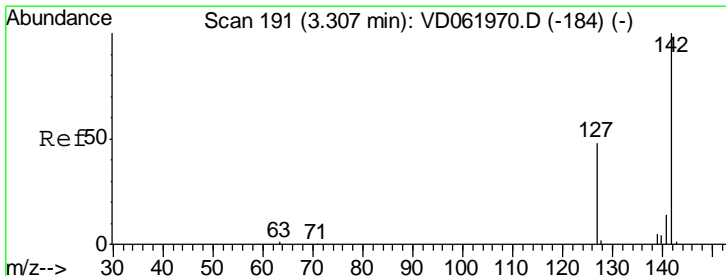
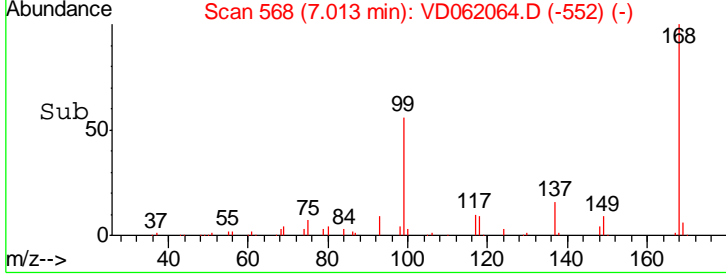
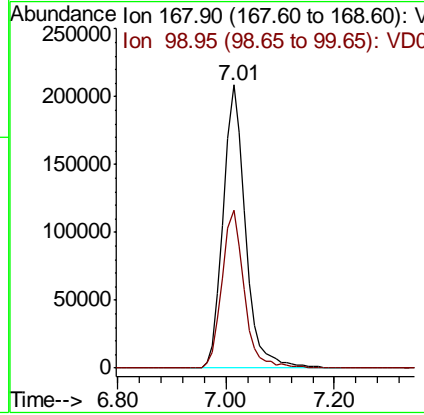
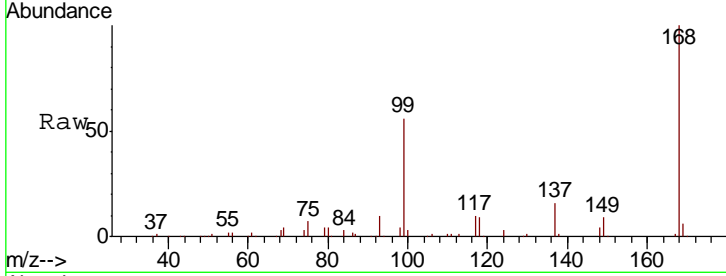




#1
 Pentafluorobenzene
 Concen: 50.000 ug/l
 RT: 7.01 min Scan# 568
 Delta R.T. -0.04 min
 Lab File: VD062064.D
 Acq: 29 Apr 2019 15:55

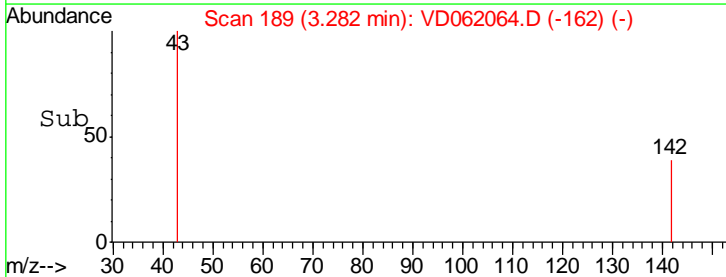
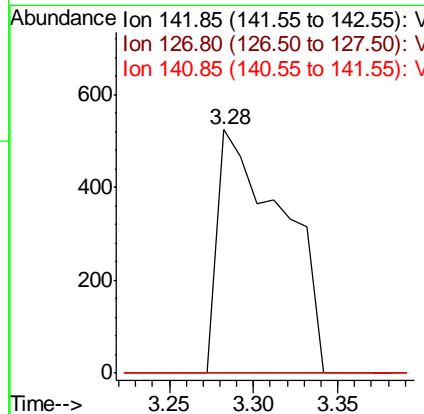
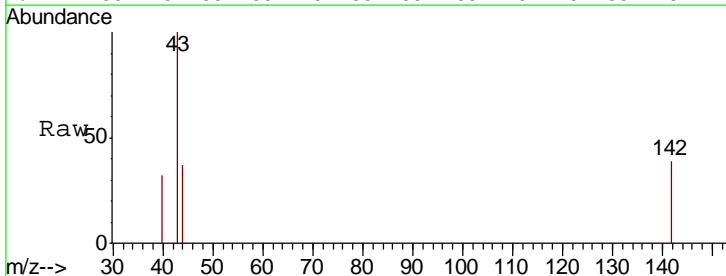
Instrument : MSVOA_D
 ClientSampleId : SSSI-0419-S-DH-6-TRE

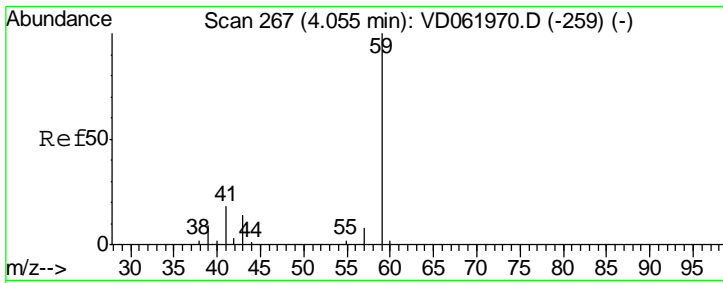
Tgt Ion:168 Resp: 594762
 Ion Ratio Lower Upper
 168 100
 99 55.8 46.5 69.7



#10
 Methyl Iodide
 Concen: 5.573 ug/l
 RT: 3.28 min Scan# 189
 Delta R.T. -0.04 min
 Lab File: VD062064.D
 Acq: 29 Apr 2019 15:55

Tgt Ion:142 Resp: 1404
 Ion Ratio Lower Upper
 142 100
 127 0.0 38.8 58.2#
 141 0.0 11.4 17.0#

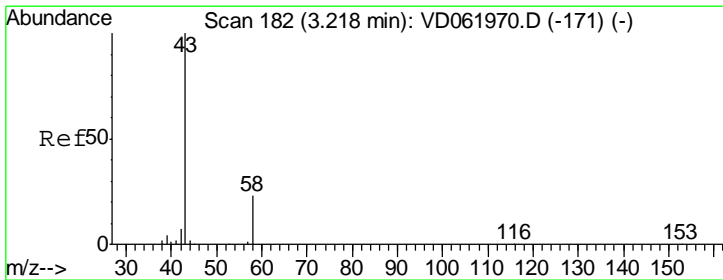
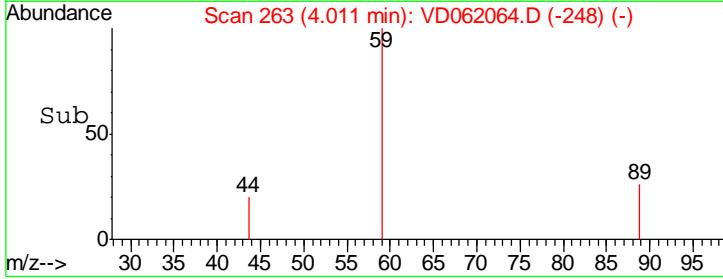
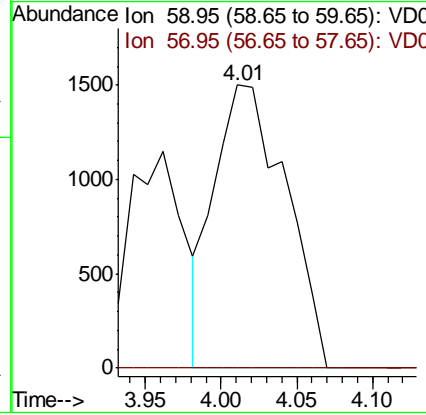
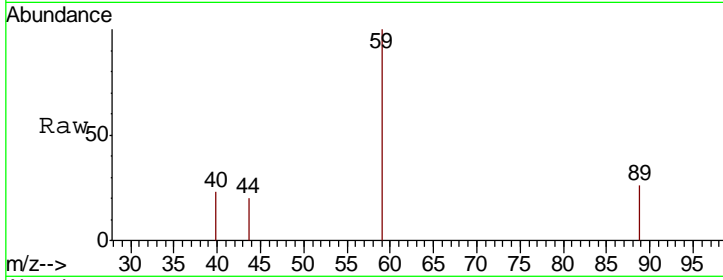




#11
 Tert butyl alcohol
 Concen: 18.623 ug/l
 RT: 4.01 min Scan# 263
 Delta R.T. -0.05 min
 Lab File: VD062064.D
 Acq: 29 Apr 2019 15:55

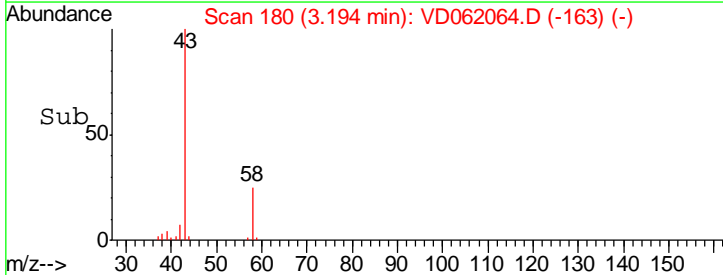
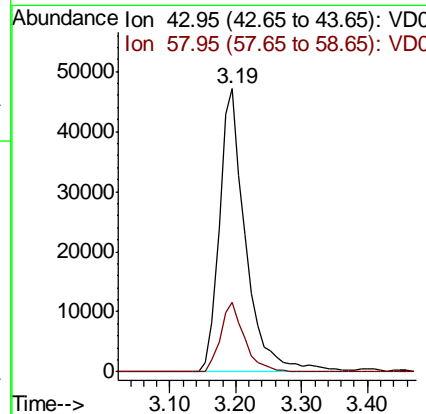
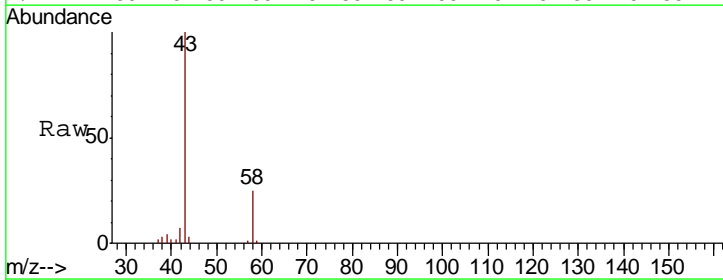
Instrument :
 MSVOA_D
 ClientSampled :
 SSSI-0419-S-DH-6-TRE

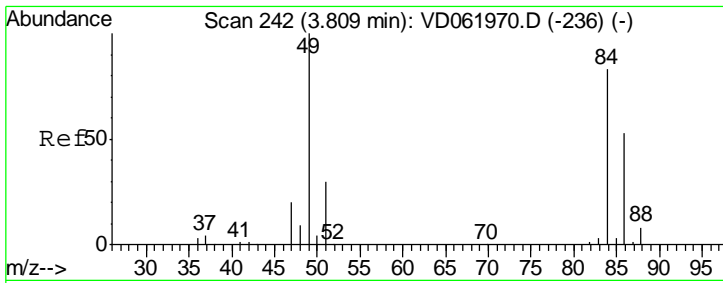
Tgt Ion: 59 Resp: 4898
 Ion Ratio Lower Upper
 59 100
 57 0.0 6.9 10.3#



#16
 Acetone
 Concen: 116.672 ug/l
 RT: 3.19 min Scan# 180
 Delta R.T. -0.03 min
 Lab File: VD062064.D
 Acq: 29 Apr 2019 15:55

Tgt Ion: 43 Resp: 129677
 Ion Ratio Lower Upper
 43 100
 58 24.6 19.9 29.9

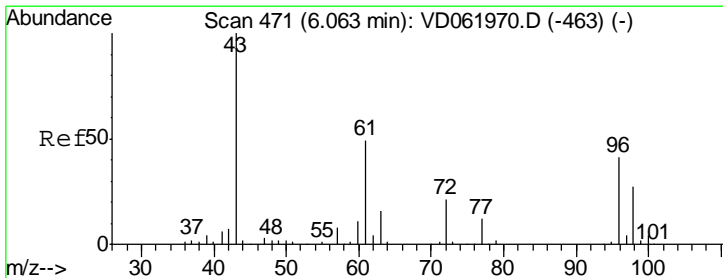
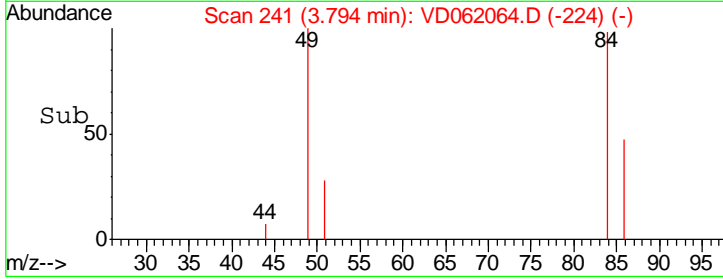
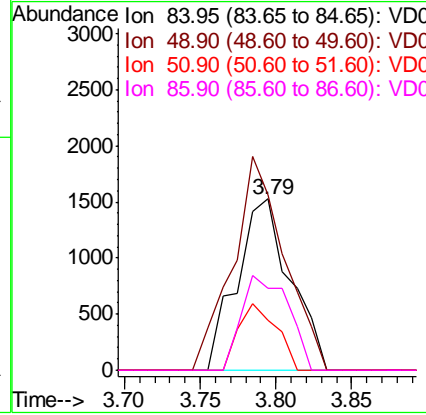
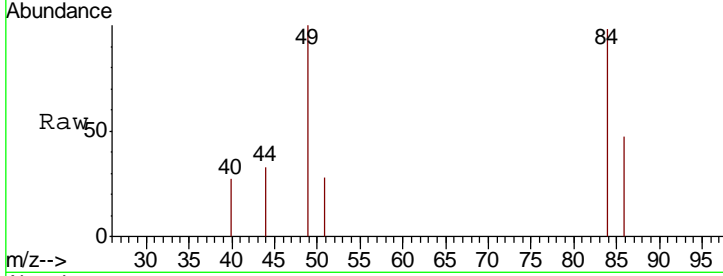




#20
 Methylene Chloride
 Concen: Below Cal
 RT: 3.79 min Scan# 241
 Delta R.T. -0.03 min
 Lab File: VD062064.D
 Acq: 29 Apr 2019 15:55

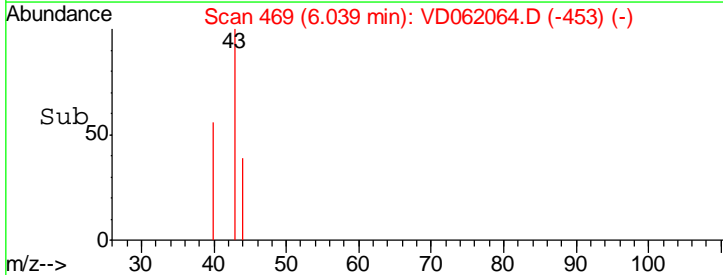
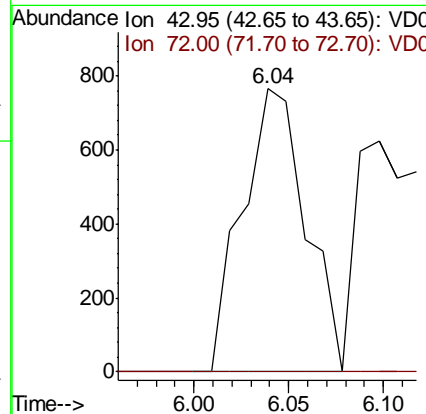
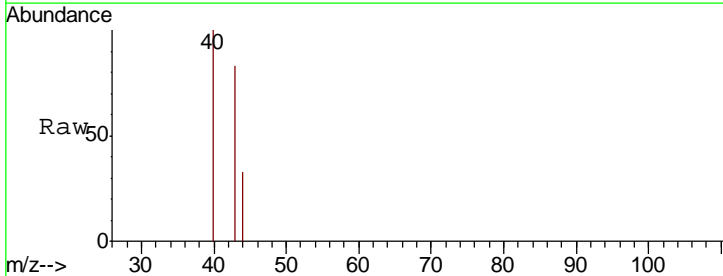
Instrument : MSVOA_D
 ClientSampleId : SSSI-0419-S-DH-6-TRE

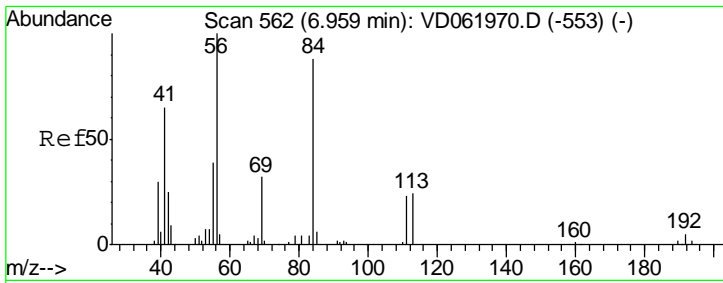
Tgt Ion	Resp	Lower	Upper
84	100		
49	102.2	94.0	141.0
51	28.8	29.0	43.4#
86	47.6	49.8	74.6#



#25
 2-Butanone
 Concen: 1.323 ug/l
 RT: 6.04 min Scan# 469
 Delta R.T. -0.04 min
 Lab File: VD062064.D
 Acq: 29 Apr 2019 15:55

Tgt Ion	Resp	Lower	Upper
43	100		
72	0.0	16.2	24.4#

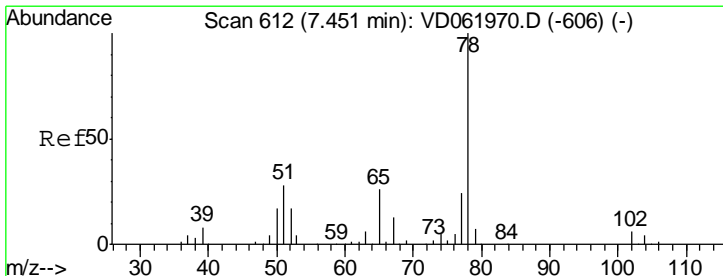
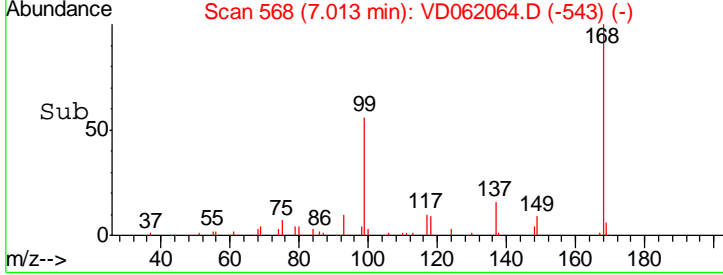
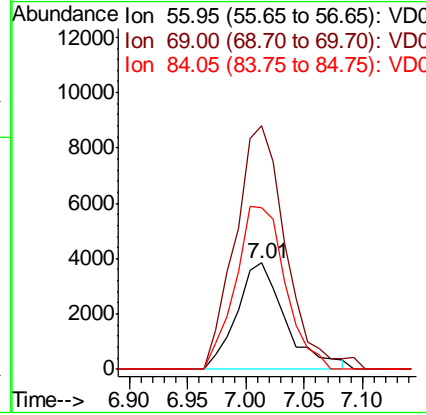
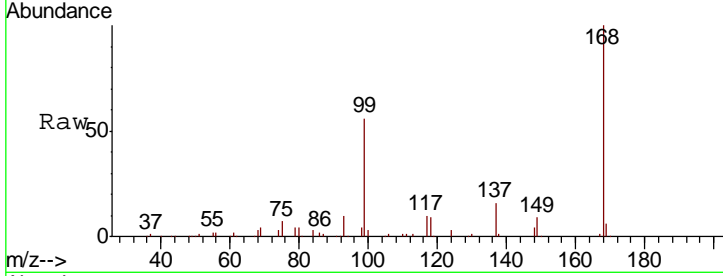




#31
 Cyclohexane
 Concen: 1.600 ug/l
 RT: 7.01 min Scan# 568
 Delta R.T. 0.05 min
 Lab File: VD062064.D
 Acq: 29 Apr 2019 15:55

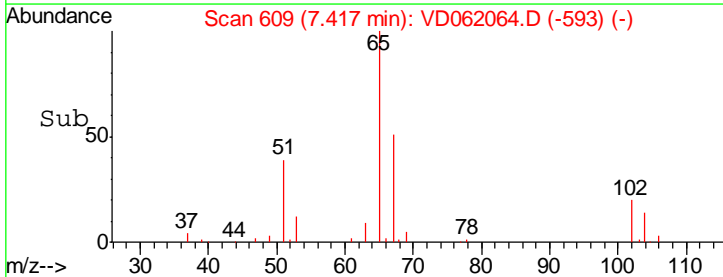
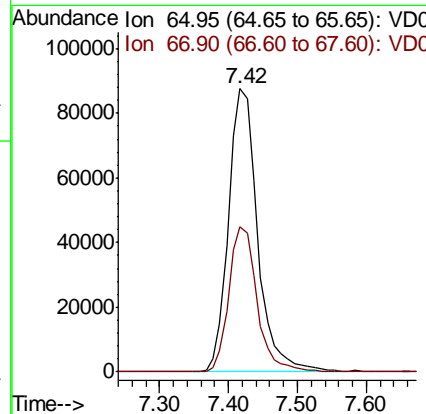
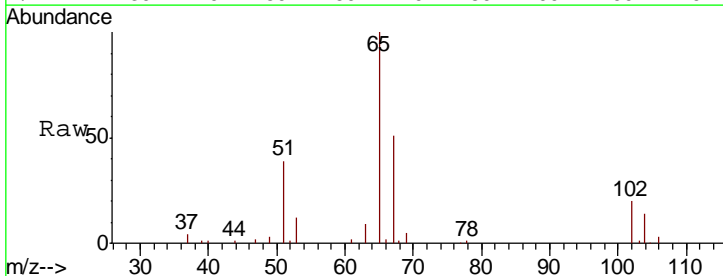
Instrument :
 MSVOA_D
 ClientSampleId :
 SSSI-0419-S-DH-6-TRE

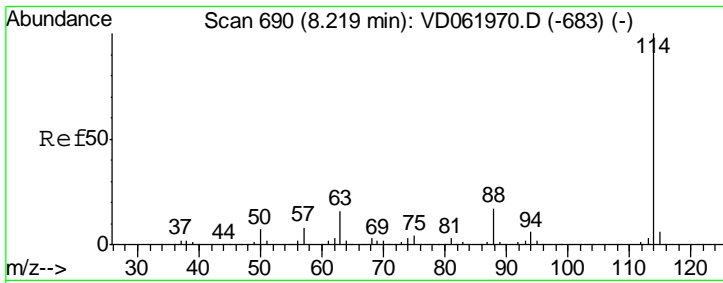
Tgt Ion	Resp	Lower	Upper
56	11096		
69	229.7	25.8	38.6#
84	152.8	72.2	108.4#



#33
 1,2-Dichloroethane-d4
 Concen: 55.039 ug/l
 RT: 7.42 min Scan# 609
 Delta R.T. -0.04 min
 Lab File: VD062064.D
 Acq: 29 Apr 2019 15:55

Tgt Ion	Resp	Lower	Upper
65	256206		
67	51.4	0.0	98.0

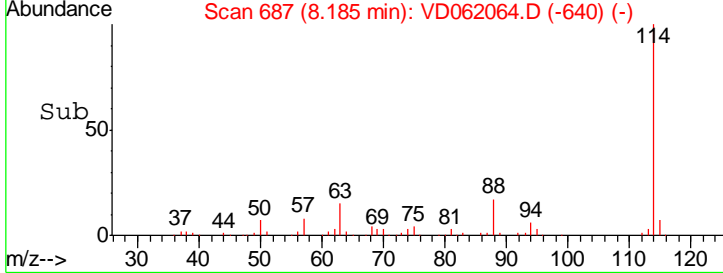
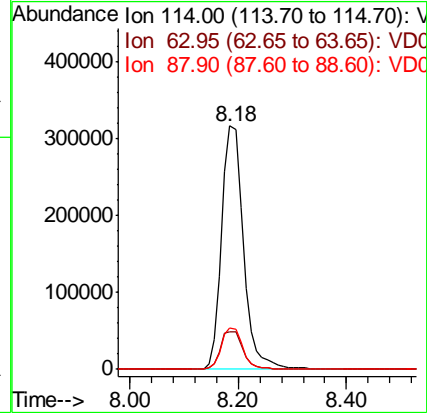
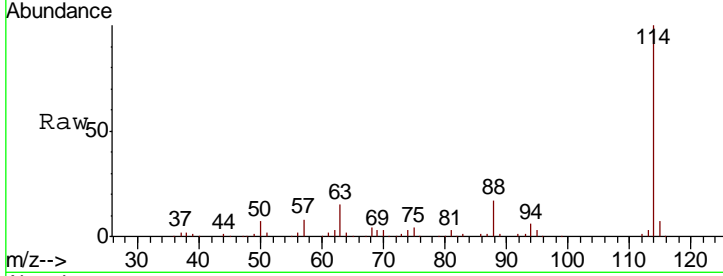




#34
 1,4-Difluorobenzene
 Concen: 50.000 ug/l
 RT: 8.18 min Scan# 687
 Delta R.T. -0.04 min
 Lab File: VD062064.D
 Acq: 29 Apr 2019 15:55

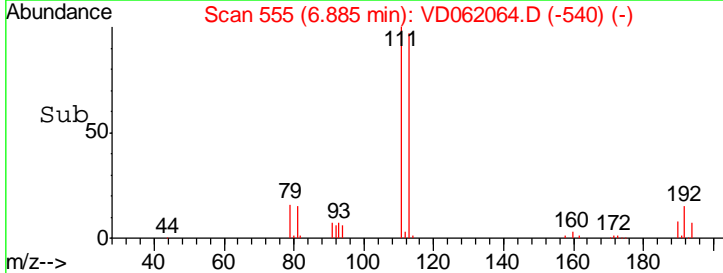
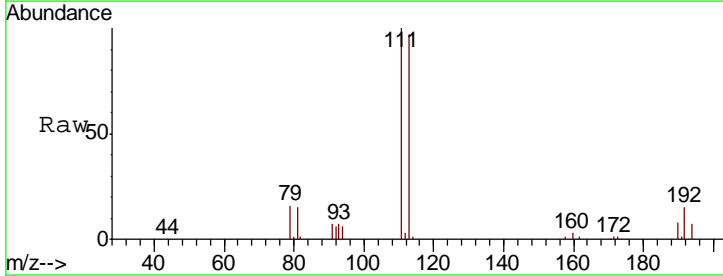
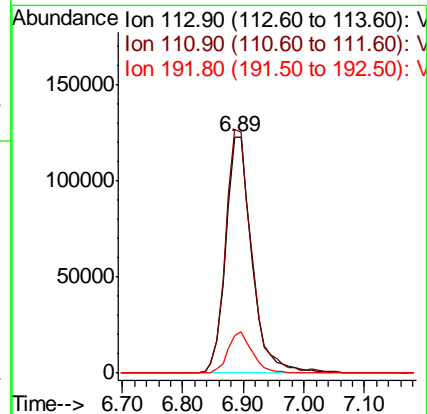
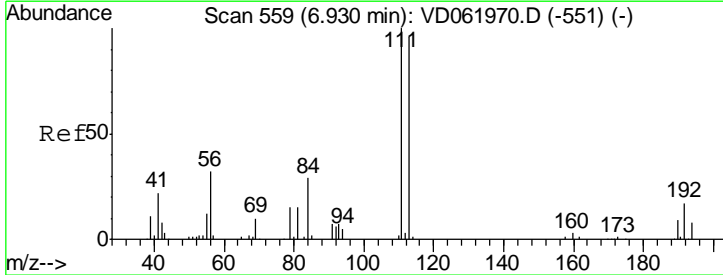
Instrument :
 MSVOA_D
 ClientSampleId :
 SSSI-0419-S-DH-6-TRE

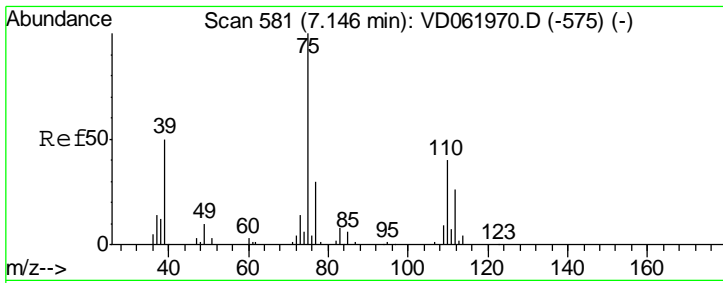
Tgt Ion	Resp	Lower	Upper
114	100		
63	15.3	0.0	32.4
88	16.8	0.0	33.6



#35
 Dibromofluoromethane
 Concen: 60.435 ug/l
 RT: 6.89 min Scan# 555
 Delta R.T. -0.05 min
 Lab File: VD062064.D
 Acq: 29 Apr 2019 15:55

Tgt Ion	Resp	Lower	Upper
113	100		
111	103.1	78.5	117.7
192	15.8	13.0	19.4

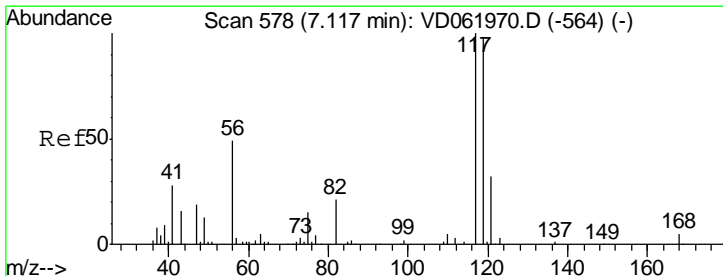
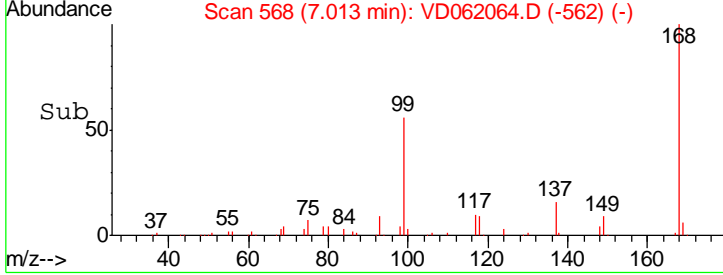
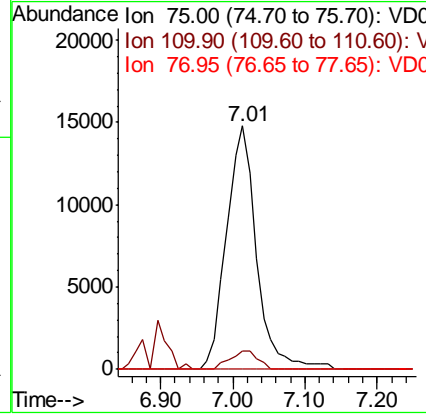
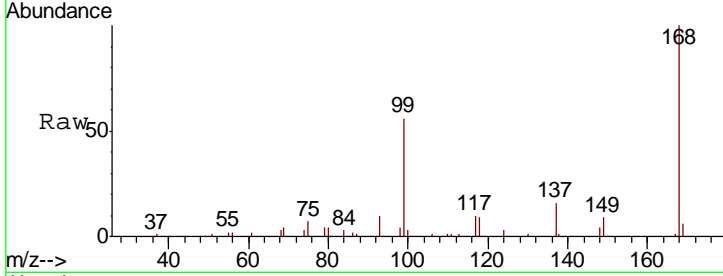




#36
 1,1-Dichloropropene
 Concen: 6.172 ug/l
 RT: 7.01 min Scan# 568
 Delta R.T. -0.14 min
 Lab File: VD062064.D
 Acq: 29 Apr 2019 15:55

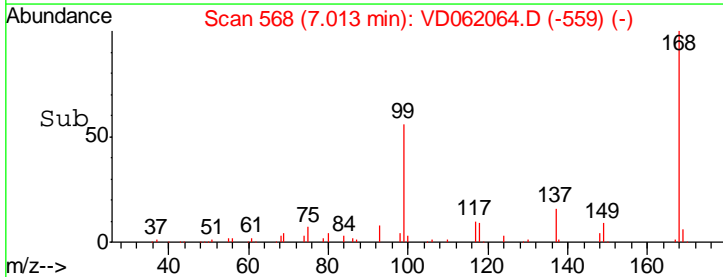
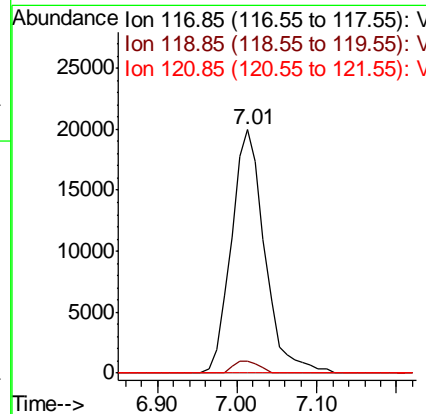
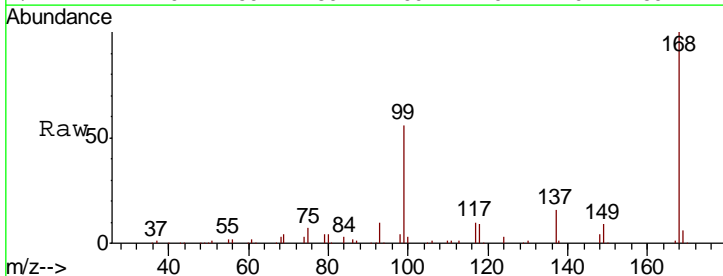
Instrument :
 MSVOA_D
 ClientSampled :
 SSSI-0419-S-DH-6-TRE

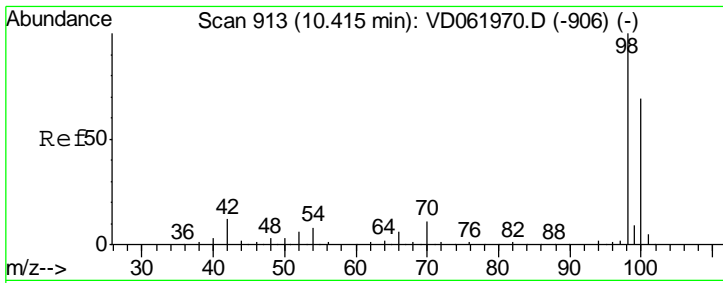
Tgt Ion	Resp	Lower	Upper
75	42624		
110	7.6	19.1	57.1#
77	0.0	25.6	38.4#



#38
 Carbon Tetrachloride
 Concen: 6.667 ug/l
 RT: 7.01 min Scan# 568
 Delta R.T. -0.11 min
 Lab File: VD062064.D
 Acq: 29 Apr 2019 15:55

Tgt Ion	Resp	Lower	Upper
117	58338		
119	5.0	75.8	113.8#
121	0.0	25.9	38.9#

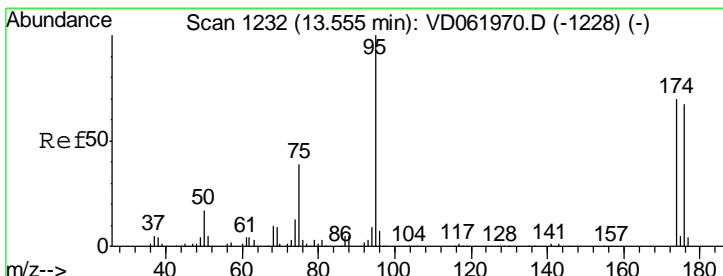
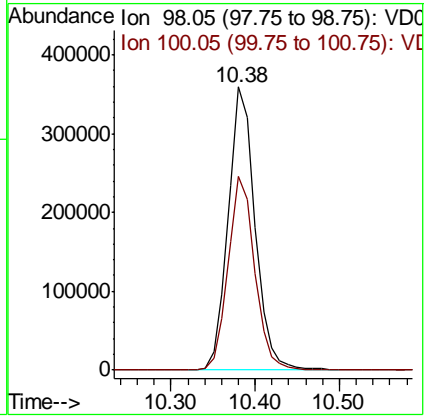
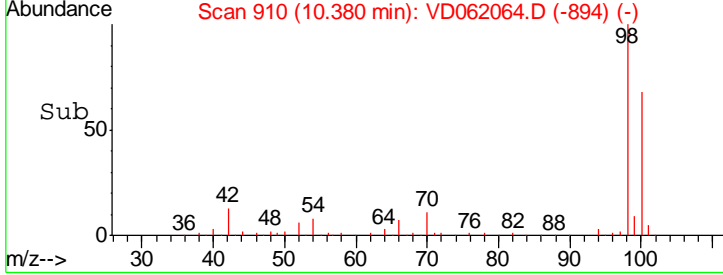
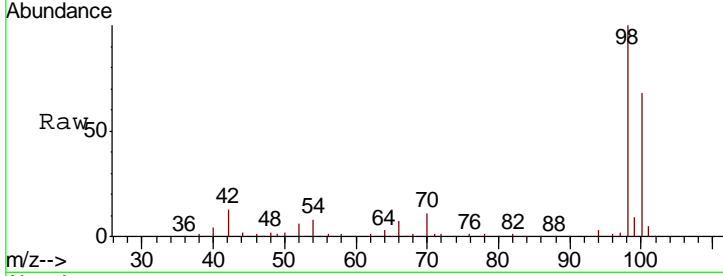




#50
 Toluene-d8
 Concen: 54.637 ug/l
 RT: 10.38 min Scan# 910
 Delta R.T. -0.04 min
 Lab File: VD062064.D
 Acq: 29 Apr 2019 15:55

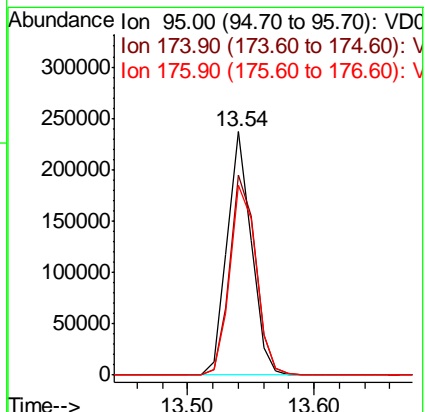
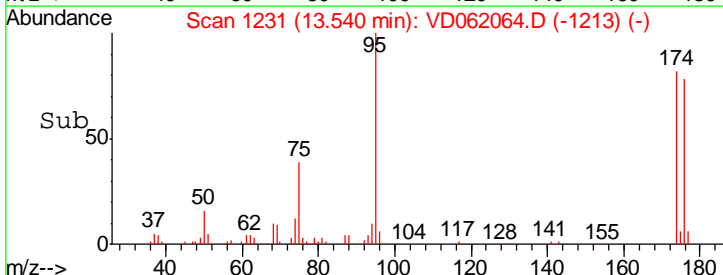
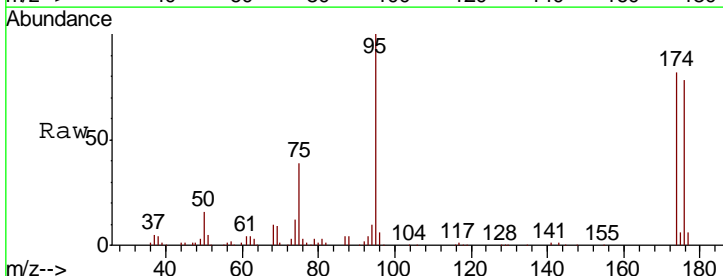
Instrument :
 MSVOA_D
ClientSampled :
 SSSI-0419-S-DH-6-TRE

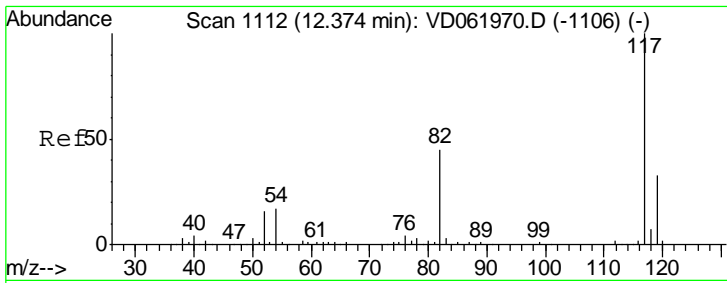
Tgt Ion	Resp	Ion Ratio	Lower	Upper
98	796966	100		
100		68.4	53.8	80.8



#62
 4-Bromofluorobenzene
 Concen: 53.629 ug/l
 RT: 13.54 min Scan# 1231
 Delta R.T. -0.02 min
 Lab File: VD062064.D
 Acq: 29 Apr 2019 15:55

Tgt Ion	Resp	Ion Ratio	Lower	Upper
95	313758	100		
174		82.2	0.0	181.8
176		78.1	0.0	174.4

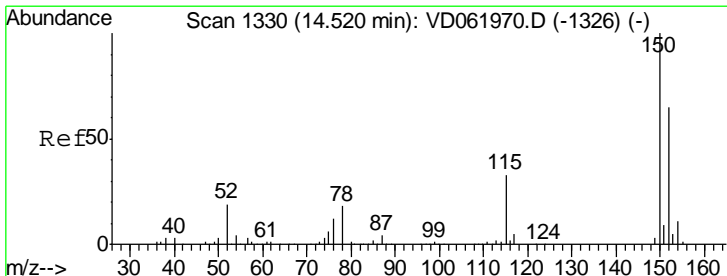
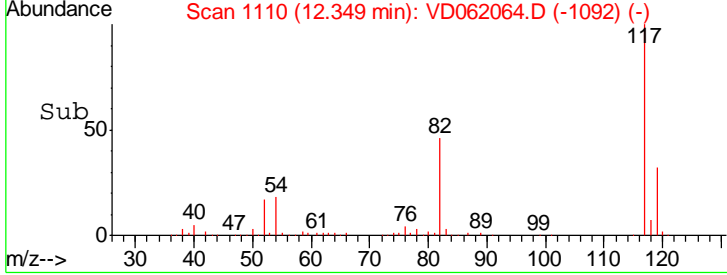
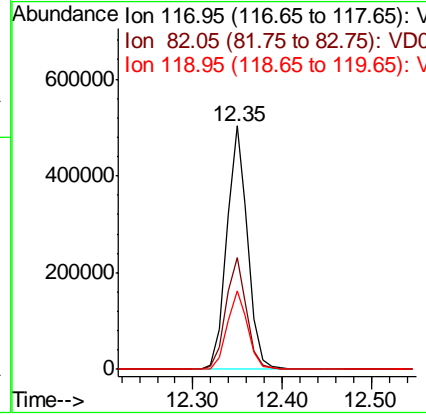
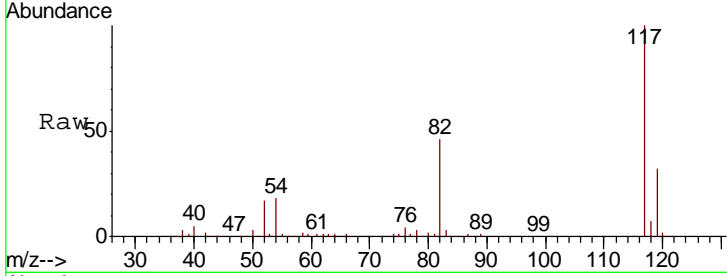




#63
 Chlorobenzene-d5
 Concen: 50.000 ug/l
 RT: 12.35 min Scan# 1110
 Delta R.T. -0.02 min
 Lab File: VD062064.D
 Acq: 29 Apr 2019 15:55

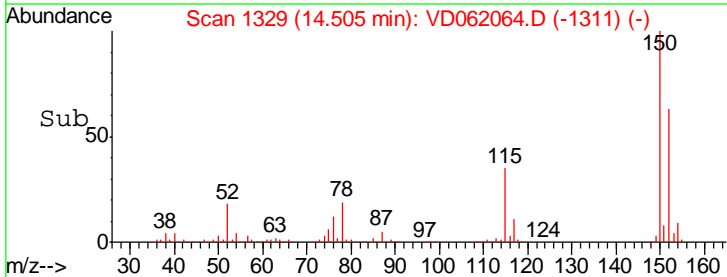
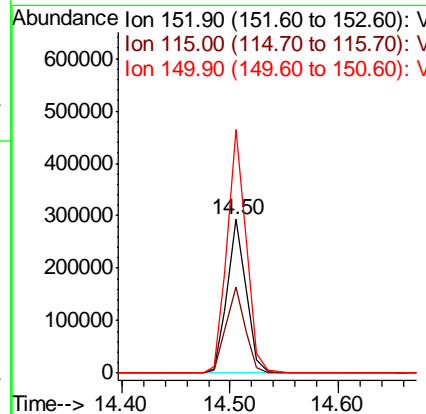
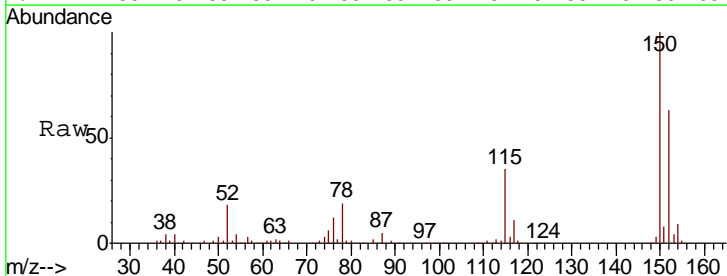
Instrument : MSVOA_D
 ClientSampled : SSSI-0419-S-DH-6-TRE

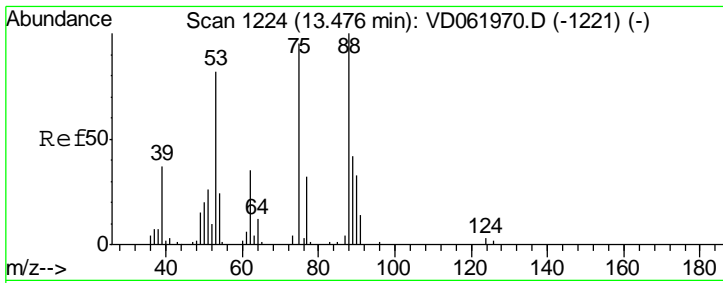
Tgt Ion	Resp	Lower	Upper
117	100		
82	46.1	36.2	54.2
119	32.5	26.2	39.4



#72
 1,4-Dichlorobenzene-d4
 Concen: 50.000 ug/l
 RT: 14.50 min Scan# 1329
 Delta R.T. -0.02 min
 Lab File: VD062064.D
 Acq: 29 Apr 2019 15:55

Tgt Ion	Resp	Lower	Upper
152	100		
115	56.0	30.9	92.7
150	158.1	0.0	314.8

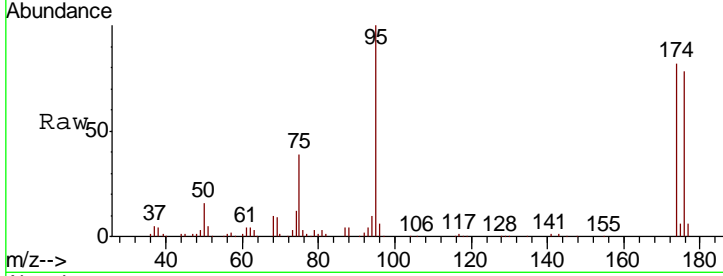




#81
 trans-1,4-Dichloro-2-butene
 Concen: 87.791 ug/l
 RT: 13.54 min Scan# 1231
 Delta R.T. 0.06 min
 Lab File: VD062064.D
 Acq: 29 Apr 2019 15:55

Instrument : MSVOA_D
 ClientSampleId : SSSI-0419-S-DH-6-TRE

Tgt Ion	Resp	Lower	Upper
75	100		
53	0.0	65.8	98.8#
89	0.0	35.0	52.6#



Abundance Ion 75.00 (74.70 to 75.70): VDC
 Ion 53.00 (52.70 to 53.70): VDC
 Ion 89.00 (88.70 to 89.70): VDC

