

Data Path : Z:\VOASRV\HPCHEM1\MSVOA D\DATA\VD042919\  
 Data File : VD062064.D  
 Acq On : 29 Apr 2019 15:55  
 Operator : FY/SY  
 Sample : K2582-02RE  
 Misc : 5.56qm/5mL/MSVOA D/SOIL  
 ALS Vial : 6 Sample Multiplier: 1

Instrument :  
 MSVOA\_D  
 ClientSampleId :  
 SSSI-0419-S-DH-6-TRE

Quant Time: Apr 29 16:36:57 2019  
 Quant Method : Z:\VOASRV\HPCHEM1\MSVOA\_D\METHOD\82D042319S.M  
 Quant Title : SW846 8260  
 QLast Update : Tue Apr 23 14:52:55 2019  
 Response via : Initial Calibration

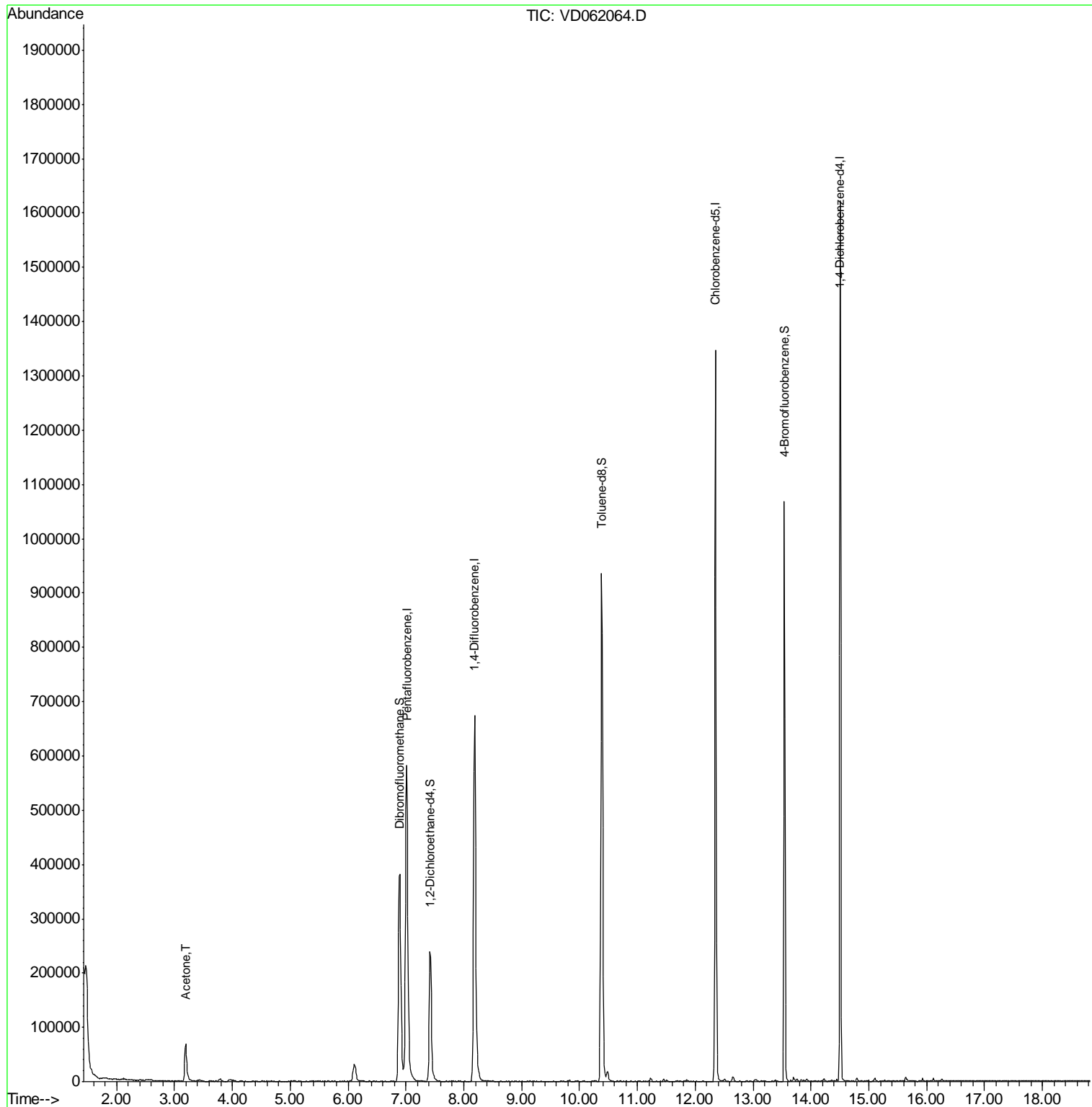
Internal Standards	R.T.	QIon	Response	Conc	Units	Dev(Min)
1) Pentafluorobenzene	7.01	168	594762	50.00	ug/l	-0.04
34) 1,4-Difluorobenzene	8.18	114	886368	50.00	ug/l	-0.04
63) Chlorobenzene-d5	12.35	117	825753	50.00	ug/l	-0.02
72) 1,4-Dichlorobenzene-d4	14.50	152	361228	50.00	ug/l	-0.02
System Monitoring Compounds						
33) 1,2-Dichloroethane-d4	7.42	65	256206	55.04	ug/l	-0.04
Spiked Amount	50.000		Recovery	=	110.08%	
35) Dibromofluoromethane	6.89	113	370472	60.44	ug/l	-0.05
Spiked Amount	50.000		Recovery	=	120.88%	
50) Toluene-d8	10.38	98	796966	54.64	ug/l	-0.04
Spiked Amount	50.000		Recovery	=	109.28%	
62) 4-Bromofluorobenzene	13.54	95	313758	53.63	ug/l	-0.02
Spiked Amount	50.000		Recovery	=	107.26%	
Target Compounds						
16) Acetone	3.19	43	129677	116.672	ug/l	99

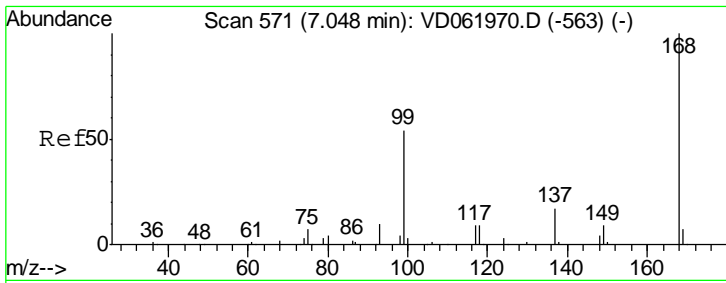
(#) = qualifier out of range (m) = manual integration (+) = signals summed

Data Path : Z:\VOASRV\HPCHEM1\MSVOA D\DATA\VD042919\  
 Data File : VD062064.D  
 Acq On : 29 Apr 2019 15:55  
 Operator : FY/SY  
 Sample : K2582-02RE  
 Misc : 5.56µm/5mL/MSVOA D/SOIL  
 ALS Vial : 6 Sample Multiplier: 1

**Instrument :**  
 MSVOA\_D  
**ClientSampleId :**  
 SSSI-0419-S-DH-6-TRE

Quant Time: Apr 29 16:36:57 2019  
 Quant Method : Z:\VOASRV\HPCHEM1\MSVOA\_D\METHOD\82D042319S.M  
 Quant Title : SW846 8260  
 QLast Update : Tue Apr 23 14:52:55 2019  
 Response via : Initial Calibration

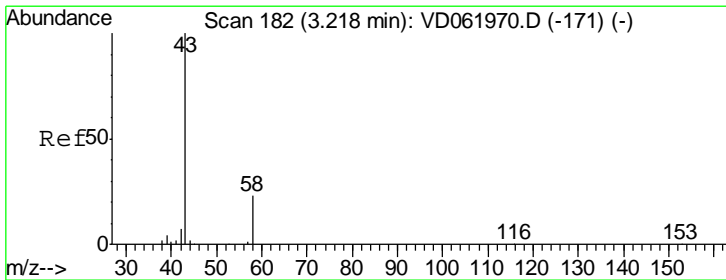
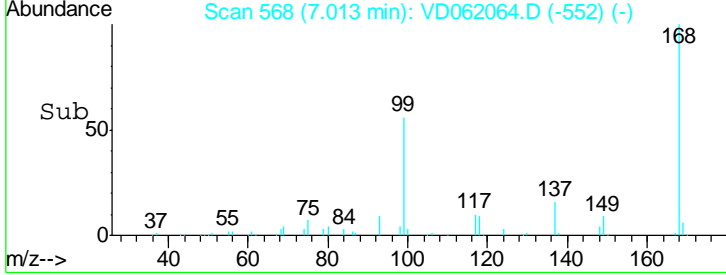
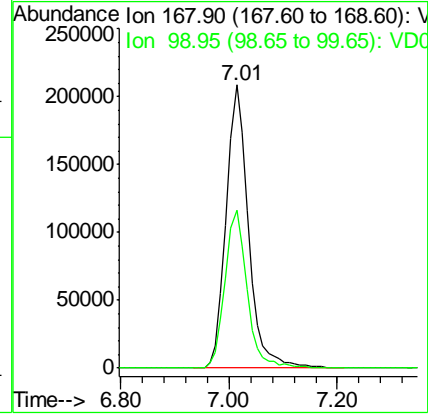
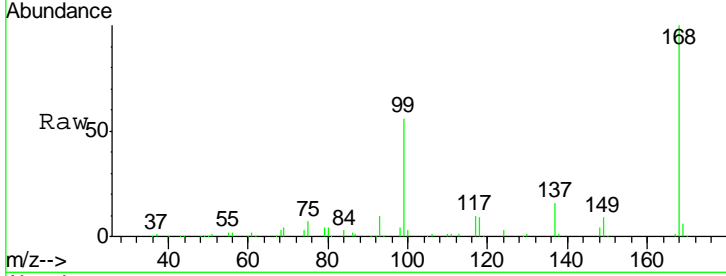




#1  
 Pentafluorobenzene  
 Concen: 50.000 ug/l  
 RT: 7.01 min Scan# 568  
 Delta R.T. -0.04 min  
 Lab File: VD062064.D  
 Acq: 29 Apr 2019 15:55

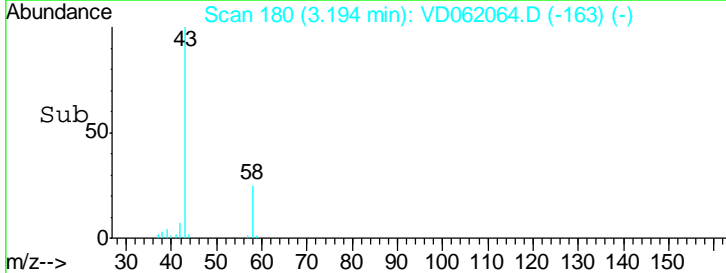
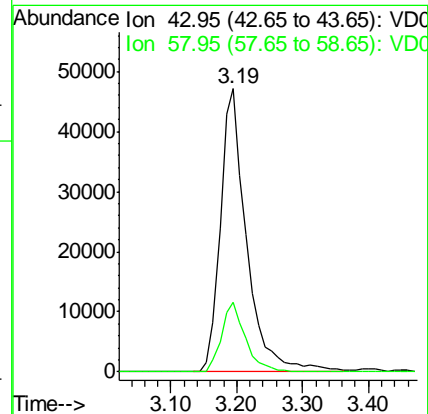
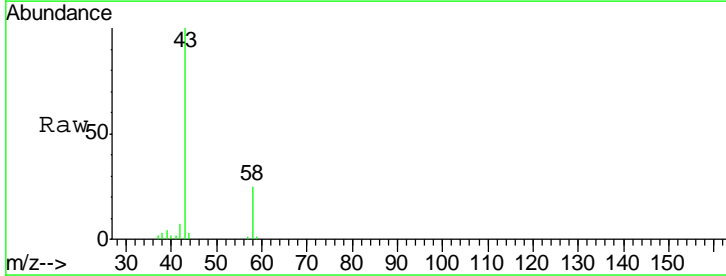
Instrument : MSVOA\_D  
 ClientSampleId : SSSI-0419-S-DH-6-TRE

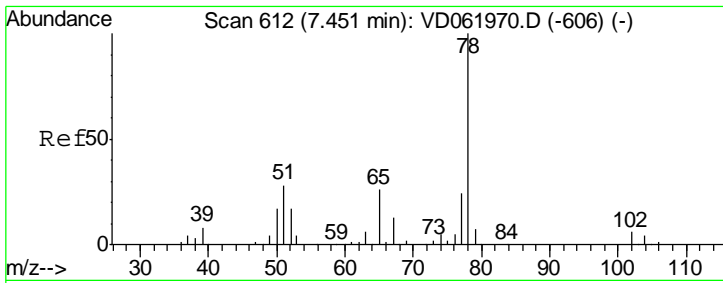
Tot Ion: 168 Resp: 594762  
 Ion Ratio Lower Upper  
 168 100  
 99 55.8 46.5 69.7



#16  
 Acetone  
 Concen: 116.672 ug/l  
 RT: 3.19 min Scan# 180  
 Delta R.T. -0.03 min  
 Lab File: VD062064.D  
 Acq: 29 Apr 2019 15:55

Tgt Ion: 43 Resp: 129677  
 Ion Ratio Lower Upper  
 43 100  
 58 24.6 19.9 29.9

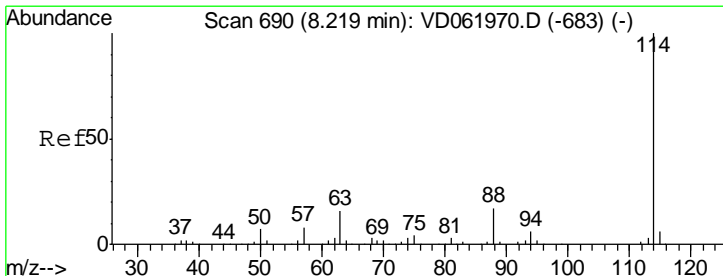
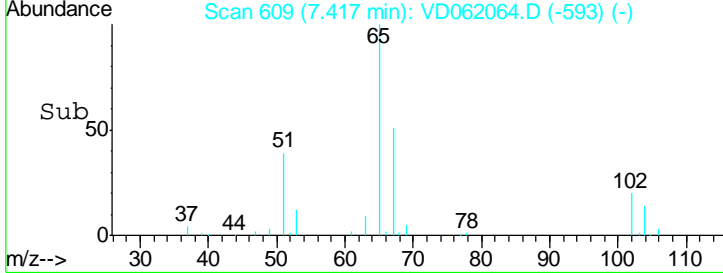
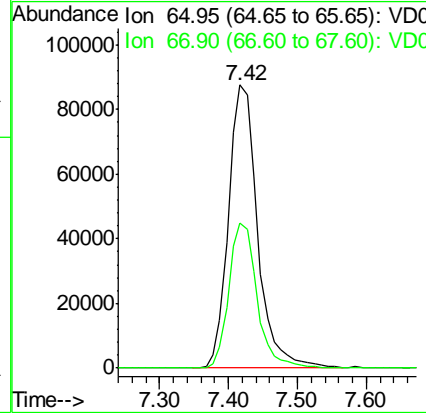
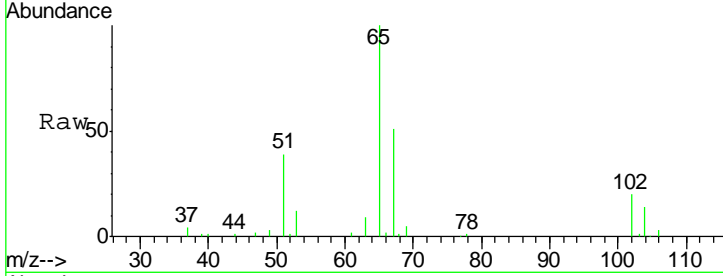




#33  
 1,2-Dichloroethane-d4  
 Concen: 55.039 ug/l  
 RT: 7.42 min Scan# 609  
 Delta R.T. -0.04 min  
 Lab File: VD062064.D  
 Acq: 29 Apr 2019 15:55

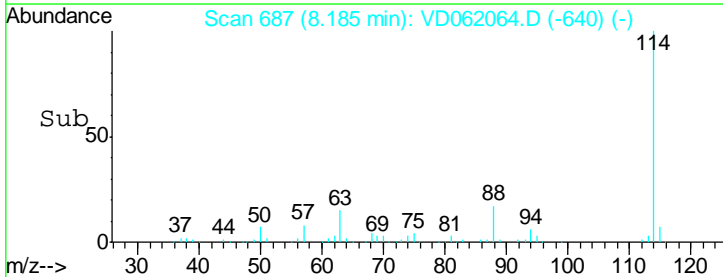
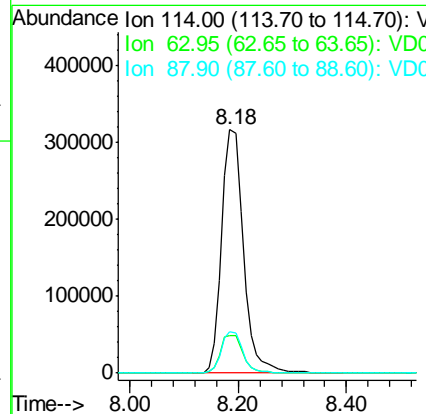
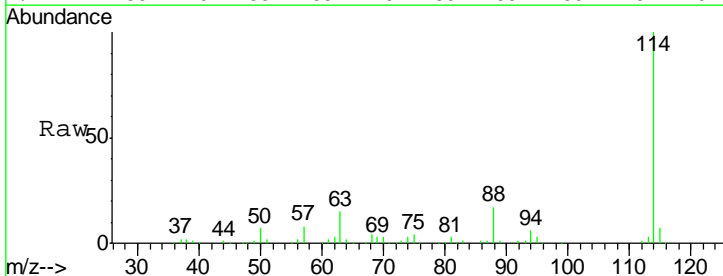
Instrument :  
 MSVOA\_D  
 ClientSampleId :  
 SSSI-0419-S-DH-6-TRE

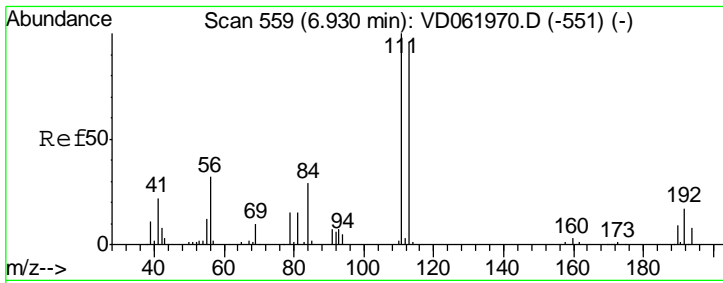
Tgt Ion: 65 Resp: 256206  
 Ion Ratio Lower Upper  
 65 100  
 67 51.4 0.0 98.0



#34  
 1,4-Difluorobenzene  
 Concen: 50.000 ug/l  
 RT: 8.18 min Scan# 687  
 Delta R.T. -0.04 min  
 Lab File: VD062064.D  
 Acq: 29 Apr 2019 15:55

Tgt Ion: 114 Resp: 886368  
 Ion Ratio Lower Upper  
 114 100  
 63 15.3 0.0 32.4  
 88 16.8 0.0 33.6

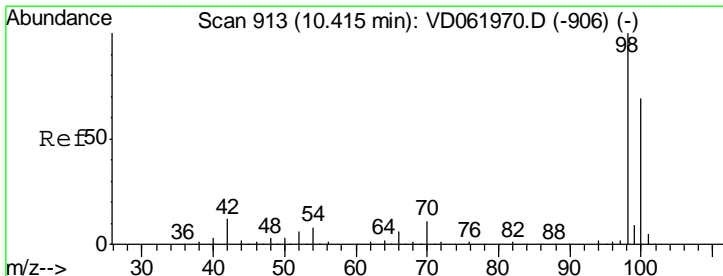
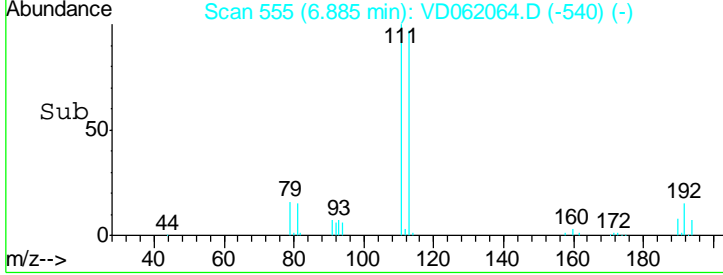
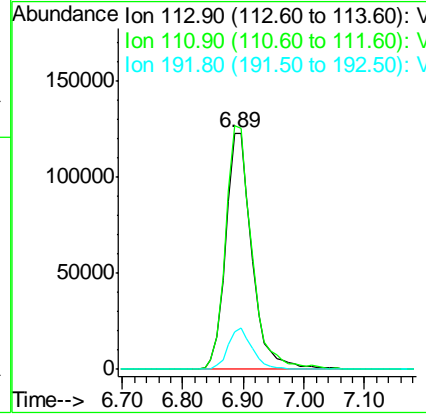
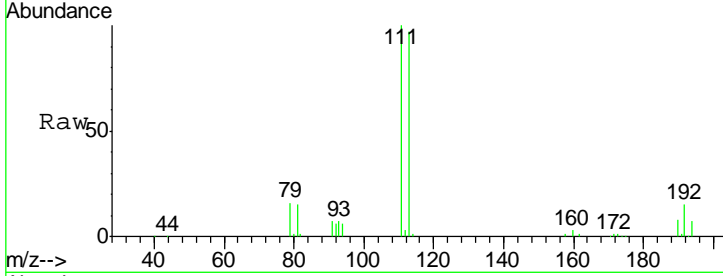




#35  
 Dibromofluoromethane  
 Concen: 60.435 ug/l  
 RT: 6.89 min Scan# 555  
 Delta R.T. -0.05 min  
 Lab File: VD062064.D  
 Acq: 29 Apr 2019 15:55

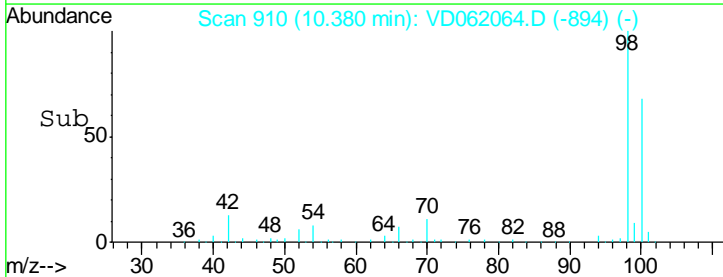
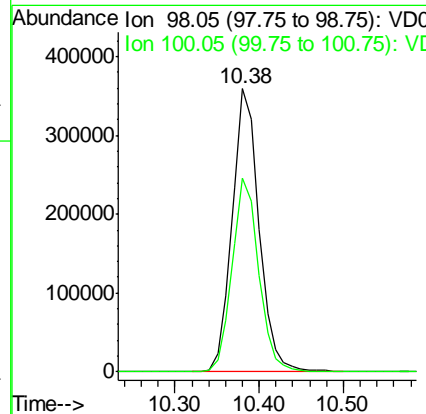
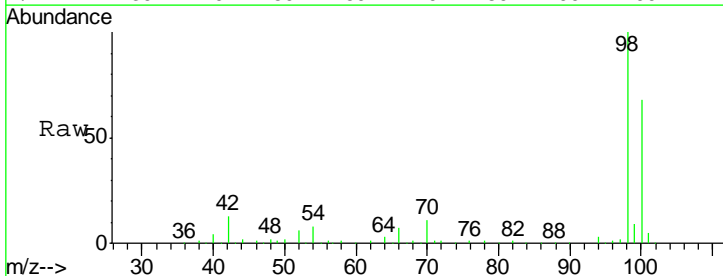
**Instrument :**  
 MSVOA\_D  
**ClientSampled :**  
 SSSI-0419-S-DH-6-TRE

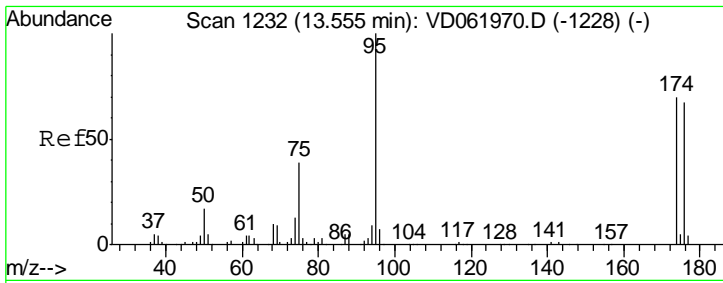
Tgt Ion	Resp	Lower	Upper
113	370472		
111	103.1	78.5	117.7
192	15.8	13.0	19.4



#50  
 Toluene-d8  
 Concen: 54.637 ug/l  
 RT: 10.38 min Scan# 910  
 Delta R.T. -0.04 min  
 Lab File: VD062064.D  
 Acq: 29 Apr 2019 15:55

Tgt Ion	Resp	Lower	Upper
98	796966		
100	68.4	53.8	80.8

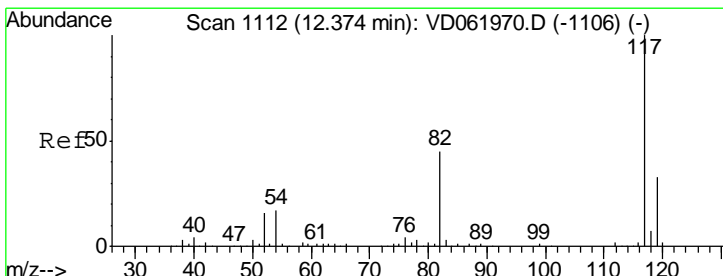
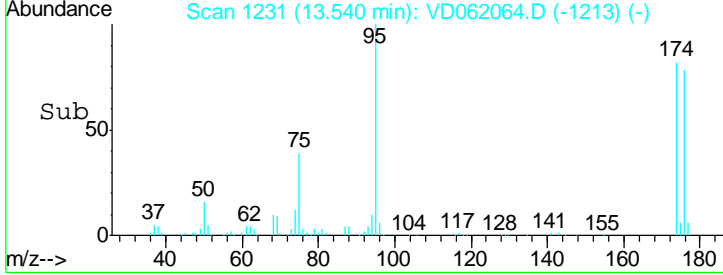
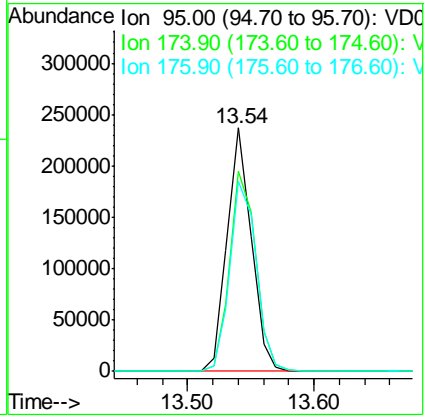
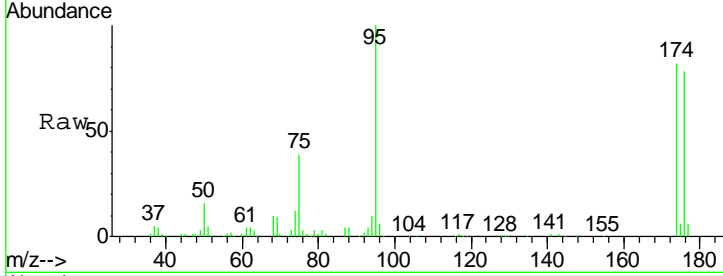




#62  
 4-Bromofluorobenzene  
 Concen: 53.629 ug/l  
 RT: 13.54 min Scan# 1231  
 Delta R.T. -0.02 min  
 Lab File: VD062064.D  
 Acq: 29 Apr 2019 15:55

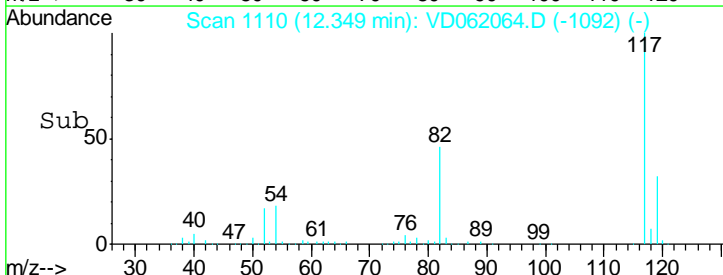
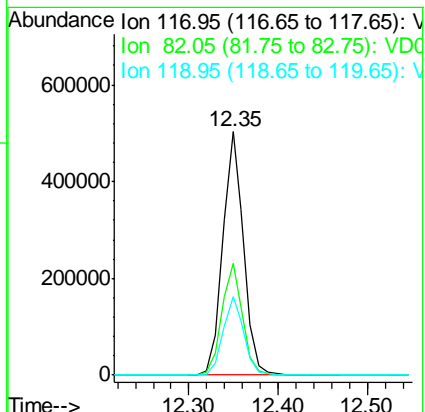
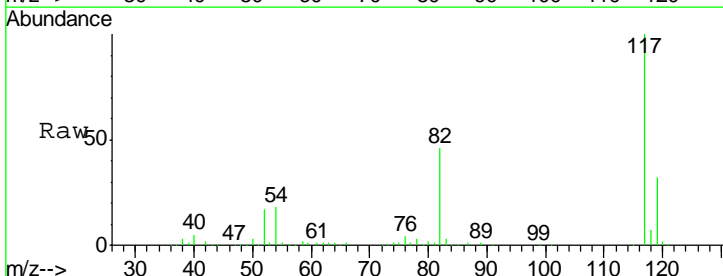
Instrument : MSVOA\_D  
 ClientSampled : SSSI-0419-S-DH-6-TRE

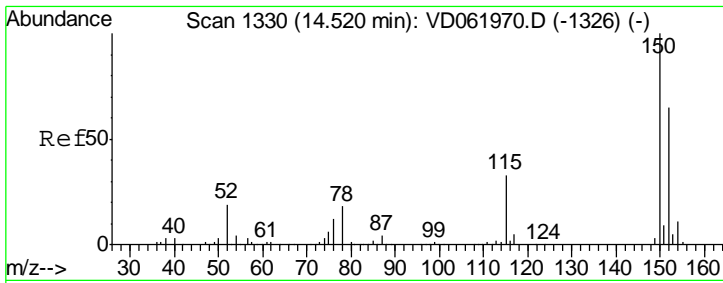
Tgt Ion	Resp	Lower	Upper
95	313758		
174	82.2	0.0	181.8
176	78.1	0.0	174.4



#63  
 Chlorobenzene-d5  
 Concen: 50.000 ug/l  
 RT: 12.35 min Scan# 1110  
 Delta R.T. -0.02 min  
 Lab File: VD062064.D  
 Acq: 29 Apr 2019 15:55

Tgt Ion	Resp	Lower	Upper
117	825753		
82	46.1	36.2	54.2
119	32.5	26.2	39.4





#72  
 1,4-Dichlorobenzene-d4  
 Concen: 50.000 ug/l  
 RT: 14.50 min Scan# 1329  
 Delta R.T. -0.02 min  
 Lab File: VD062064.D  
 Acq: 29 Apr 2019 15:55

**Instrument :**  
 MSVOA\_D  
**ClientSampled :**  
 SSSI-0419-S-DH-6-TRE

Tot Ion	Resp	Lower	Upper
152	100		
115	56.0	30.9	92.7
150	158.1	0.0	314.8

