

Data Path : Z:\voasrv\HPCHEM1\MSVOA_D\Data\VD042923\
 Data File : VD075921.D
 Acq On : 29 Apr 2023 17:20
 Operator : KP/SY
 Sample : 02548-36
 Misc : 5.85G/10.00ml/MSVOA_D/SOIL
 ALS Vial : 13 Sample Multiplier: 1

Instrument :
 MSVOA_D
 ClientSampleId :
 DCCR6

Integration Parameters: LSCINT.P

Integrator: RTE
 Smoothing : OFF
 Sampling : 1
 Start Thrs : 0.2
 Stop Thrs : 0

Filtering: 5
 Min Area: 0 % of largest Peak
 Max Peaks: 100
 Peak Location: TOP

If leading or trailing edge < 100 prefer < Baseline drop else tangent >
 Peak separation: 5

Method : Z:\voasrv\HPCHEM1\MSVOA_D\Method\SFAMDLM042023SMA.M
 Title : SFAM01.0

Signal : TIC: VD075921.D\data.ms

peak #	R.T. min	first scan	max scan	last scan	PK TY	peak height	corr. area	corr. % max.	% of total
1	1.652	7	11	12	rBV	872	783	0.06%	0.006%
2	1.740	14	26	38	rBV	695975	1344088	97.77%	10.817%
3	2.275	111	117	123	rBV	199165	294843	21.45%	2.373%
4	2.416	136	141	149	rVB	19962	34314	2.50%	0.276%
5	2.593	166	171	173	rBV5	3176	5103	0.37%	0.041%
6	2.799	199	206	214	rBV	167359	310063	22.55%	2.495%
7	3.181	270	271	274	rVB	1271	714	0.05%	0.006%
8	3.452	315	317	318	rBV	1036	517	0.04%	0.004%
9	3.699	356	359	360	rBV	754	460	0.03%	0.004%
10	3.781	371	373	374	rBV2	530	426	0.03%	0.003%
11	3.846	383	384	386	rBV2	563	429	0.03%	0.003%
12	3.910	386	395	408	rBV2	161491	431478	31.39%	3.473%
13	4.252	451	453	454	rBV	509	337	0.02%	0.003%
14	4.346	466	469	474	rBV2	558	709	0.05%	0.006%
15	4.434	482	484	486	rBV	699	818	0.06%	0.007%
16	4.504	493	496	499	rVB2	694	750	0.05%	0.006%
17	4.657	521	522	523	rBV	1053	460	0.03%	0.004%
18	4.799	534	546	557	rBV3	13152	40936	2.98%	0.329%
19	4.951	568	572	573	rBV	612	604	0.04%	0.005%
20	4.981	576	577	579	rVB2	534	347	0.03%	0.003%
21	5.004	579	581	583	rVB	871	719	0.05%	0.006%
22	5.022	583	584	586	rBV	572	458	0.03%	0.004%
23	5.075	591	593	594	rBV2	505	377	0.03%	0.003%
24	5.163	607	608	609	rBV	713	336	0.02%	0.003%
25	5.240	620	621	624	rVB	951	699	0.05%	0.006%
26	5.275	624	627	630	rBV2	699	999	0.07%	0.008%
27	5.446	653	656	659	rBV5	930	1272	0.09%	0.010%
28	5.663	691	693	696	rBV	670	557	0.04%	0.004%
29	5.804	715	717	719	rBV	831	986	0.07%	0.008%
30	5.969	743	745	748	rVB	665	530	0.04%	0.004%
31	5.998	748	750	751	rBV	1059	785	0.06%	0.006%
32	6.075	761	763	766	rBV2	1132	1048	0.08%	0.008%
33	6.410	818	820	823	rBV2	716	676	0.05%	0.005%
34	6.475	829	831	832	rBV	377	336	0.02%	0.003%
35	6.546	842	843	846	rBV	655	495	0.04%	0.004%
36	6.687	863	867	869	rBV	887	1280	0.09%	0.010%

Data Path : Z:\voasrv\HPCHEM1\MSVOA_D\Data\VD042923\
 Data File : VD075921.D
 Acq On : 29 Apr 2023 17:20
 Operator : KP/SY
 Sample : 02548-36
 Misc : 5.85G/10.00ml/MSVOA_D/SOIL
 ALS Vial : 13 Sample Multiplier: 1

Instrument :
 MSVOA_D
 ClientSampleId :
 DCCR6

Integration Parameters: LSCINT.P

Integrator: RTE
 Smoothing : OFF Filtering: 5
 Sampling : 1 Min Area: 0 % of largest Peak
 Start Thrs: 0.2 Max Peaks: 100
 Stop Thrs : 0 Peak Location: TOP

If leading or trailing edge < 100 prefer < Baseline drop else tangent >
 Peak separation: 5

Method : Z:\voasrv\HPCHEM1\MSVOA_D\Method\SFAMDLM042023SMA.M
 Title : SFAM01.0

37	6.834	890	892	896	rVB2	766	628	0.05%	0.005%
38	6.881	899	900	904	rBV2	783	1039	0.08%	0.008%
39	6.916	904	906	907	rBV	647	480	0.03%	0.004%
40	6.987	908	918	928	rBV	36892	105325	7.66%	0.848%
41	7.251	961	963	965	rVB2	925	560	0.04%	0.005%
42	7.275	965	967	969	rVB	1170	772	0.06%	0.006%
43	7.298	969	971	974	rBV2	1845	2172	0.16%	0.017%
44	7.569	1007	1017	1028	rBV	254649	636382	46.29%	5.122%
45	7.734	1044	1045	1047	rVB2	1128	552	0.04%	0.004%
46	7.763	1048	1050	1051	rBV2	1154	578	0.04%	0.005%
47	8.110	1108	1109	1111	rBV2	627	440	0.03%	0.004%
48	8.204	1115	1125	1140	rBV2	467948	1374740	100.00%	11.064%
49	8.469	1169	1170	1171	rVB	1100	388	0.03%	0.003%
50	8.581	1187	1189	1190	rBV	970	508	0.04%	0.004%
51	8.775	1213	1222	1235	rBV	482804	987295	71.82%	7.946%
52	8.892	1240	1242	1244	rBV3	1083	873	0.06%	0.007%
53	9.010	1259	1262	1268	rVB3	2745	4654	0.34%	0.037%
54	9.210	1287	1296	1305	rBV	330045	668120	48.60%	5.377%
55	9.428	1332	1333	1334	rBV	898	418	0.03%	0.003%
56	9.528	1348	1350	1351	rVV	721	487	0.04%	0.004%
57	9.545	1351	1353	1355	rVV2	775	531	0.04%	0.004%
58	9.569	1355	1357	1358	rVV	588	386	0.03%	0.003%
59	9.604	1360	1363	1366	rVB3	1854	2299	0.17%	0.019%
60	9.628	1366	1367	1368	rBV	881	419	0.03%	0.003%
61	9.692	1376	1378	1379	rBV	1004	516	0.04%	0.004%
62	9.975	1419	1426	1436	rBV	159696	304567	22.15%	2.451%
63	10.157	1455	1457	1459	rBV	948	666	0.05%	0.005%
64	10.181	1459	1461	1462	rBV	545	398	0.03%	0.003%
65	10.192	1462	1463	1464	rVB	1149	405	0.03%	0.003%
66	10.269	1468	1476	1485	rBV	672698	1171845	85.24%	9.431%
67	10.451	1505	1507	1510	rBV3	725	742	0.05%	0.006%
68	10.528	1512	1520	1528	rVB	117437	202059	14.70%	1.626%
69	10.663	1538	1543	1549	rVB3	9228	15461	1.12%	0.124%
70	10.775	1560	1562	1563	rBV2	949	691	0.05%	0.006%
71	10.810	1563	1568	1572	rVV5	3022	4692	0.34%	0.038%
72	10.881	1572	1580	1595	rVV	144638	250962	18.26%	2.020%
73	11.069	1611	1612	1613	rBV	679	337	0.02%	0.003%
74	11.163	1626	1628	1631	rBV	954	651	0.05%	0.005%
75	11.292	1647	1650	1651	rBV2	702	731	0.05%	0.006%
76	11.581	1692	1699	1711	rBV	768646	1311834	95.42%	10.558%

Data Path : Z:\voasrv\HPCHEM1\MSVOA_D\Data\VD042923\
 Data File : VD075921.D
 Acq On : 29 Apr 2023 17:20
 Operator : KP/SY
 Sample : 02548-36
 Misc : 5.85G/10.00ml/MSVOA_D/SOIL
 ALS Vial : 13 Sample Multiplier: 1

Instrument :
 MSVOA_D
 ClientSampleId :
 DCCR6

Integration Parameters: LSCINT.P

Integrator: RTE
 Smoothing : OFF Filtering: 5
 Sampling : 1 Min Area: 0 % of largest Peak
 Start Thrs: 0.2 Max Peaks: 100
 Stop Thrs : 0 Peak Location: TOP

If leading or trailing edge < 100 prefer < Baseline drop else tangent >
 Peak separation: 5

Method : Z:\voasrv\HPCHEM1\MSVOA_D\Method\SFAMDLM042023SMA.M
 Title : SFAM01.0

77	11.716	1720	1722	1723	rBV2	716	369	0.03%	0.003%
78	11.792	1731	1735	1736	rBV3	1902	1989	0.14%	0.016%
79	12.016	1771	1773	1775	rBV	766	519	0.04%	0.004%
80	12.286	1817	1819	1823	rVB2	718	747	0.05%	0.006%
81	12.469	1848	1850	1851	rBV	660	379	0.03%	0.003%
82	12.580	1863	1869	1874	rBV3	20916	32491	2.36%	0.261%
83	12.651	1874	1881	1892	rVB	319238	517771	37.66%	4.167%
84	12.763	1899	1900	1903	rVB	954	428	0.03%	0.003%
85	12.816	1906	1909	1911	rVB	735	567	0.04%	0.005%
86	12.933	1927	1929	1931	rBV2	563	518	0.04%	0.004%
87	13.180	1970	1971	1973	rBV2	1430	962	0.07%	0.008%
88	13.251	1981	1983	1984	rBV	762	590	0.04%	0.005%
89	13.380	1999	2005	2006	rBV4	2220	2745	0.20%	0.022%
90	13.433	2009	2014	2018	rBV4	2673	4354	0.32%	0.035%
91	13.469	2018	2020	2021	rVB	927	485	0.04%	0.004%
92	13.522	2021	2029	2036	rBV	767815	1235883	89.90%	9.947%
93	13.616	2043	2045	2052	rVB4	3131	4082	0.30%	0.033%
94	13.816	2072	2079	2090	rVB	660516	1059174	77.05%	8.524%
95	13.969	2103	2105	2106	rBV	859	455	0.03%	0.004%
96	13.986	2106	2108	2109	rVV	811	411	0.03%	0.003%
97	14.045	2114	2118	2124	rVV3	11276	18584	1.35%	0.150%
98	14.598	2210	2212	2215	rVB3	1209	933	0.07%	0.008%
99	15.416	2347	2351	2354	rVB2	3278	3849	0.28%	0.031%
100	15.874	2427	2429	2430	rBV	1290	647	0.05%	0.005%

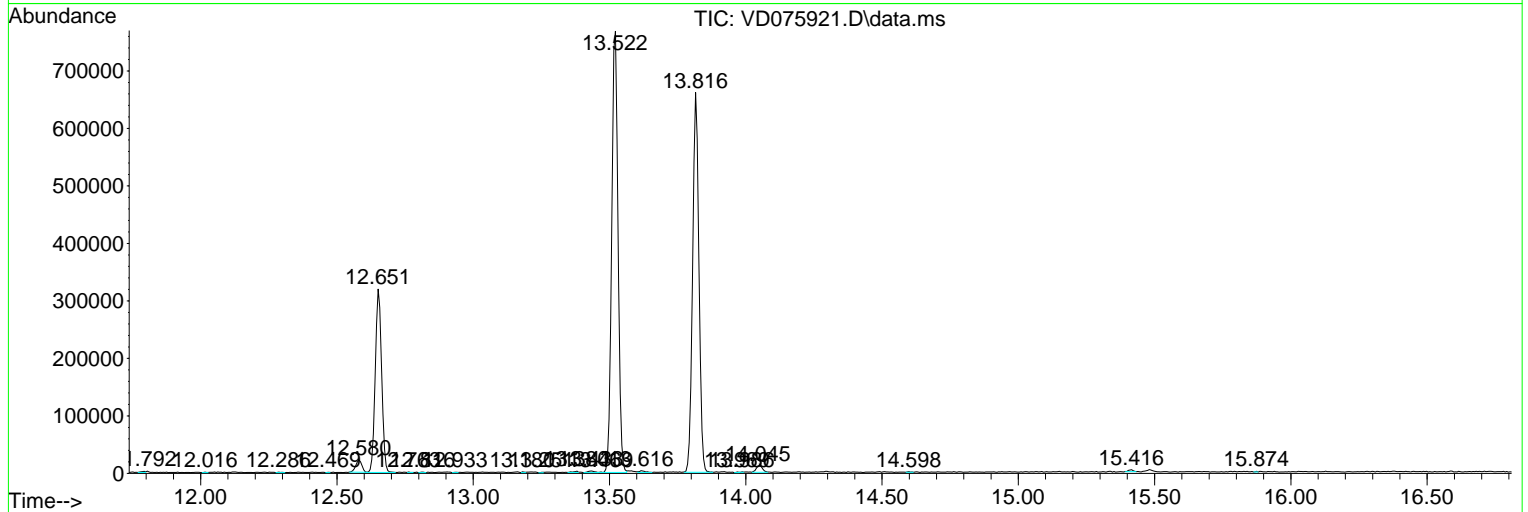
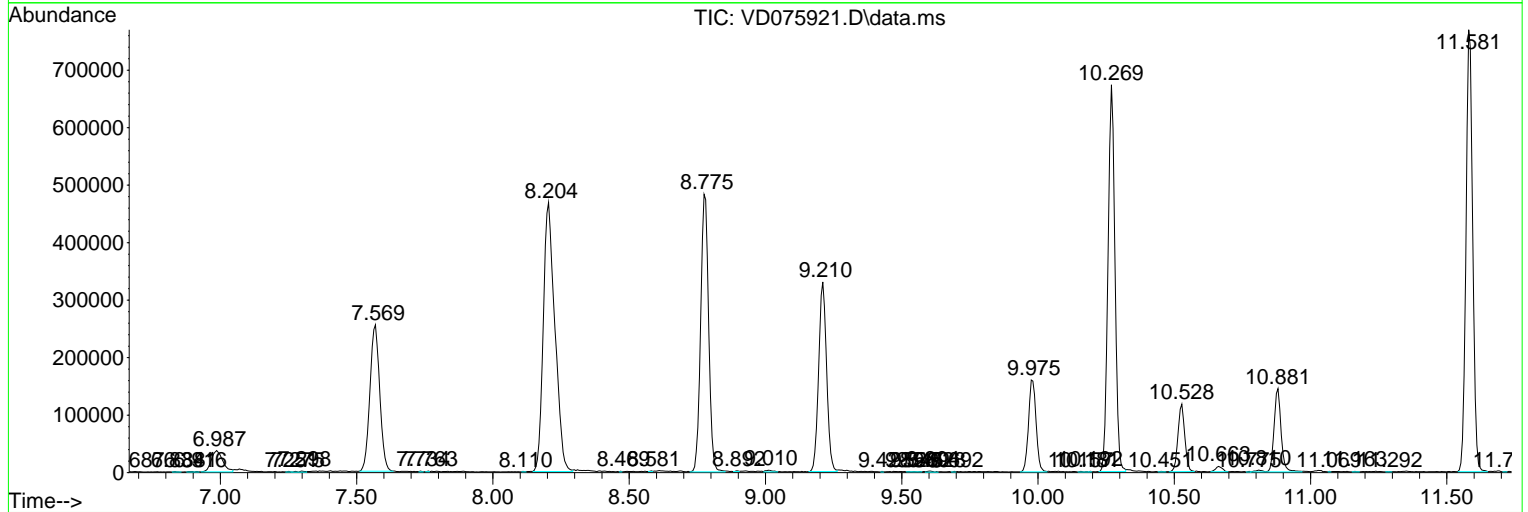
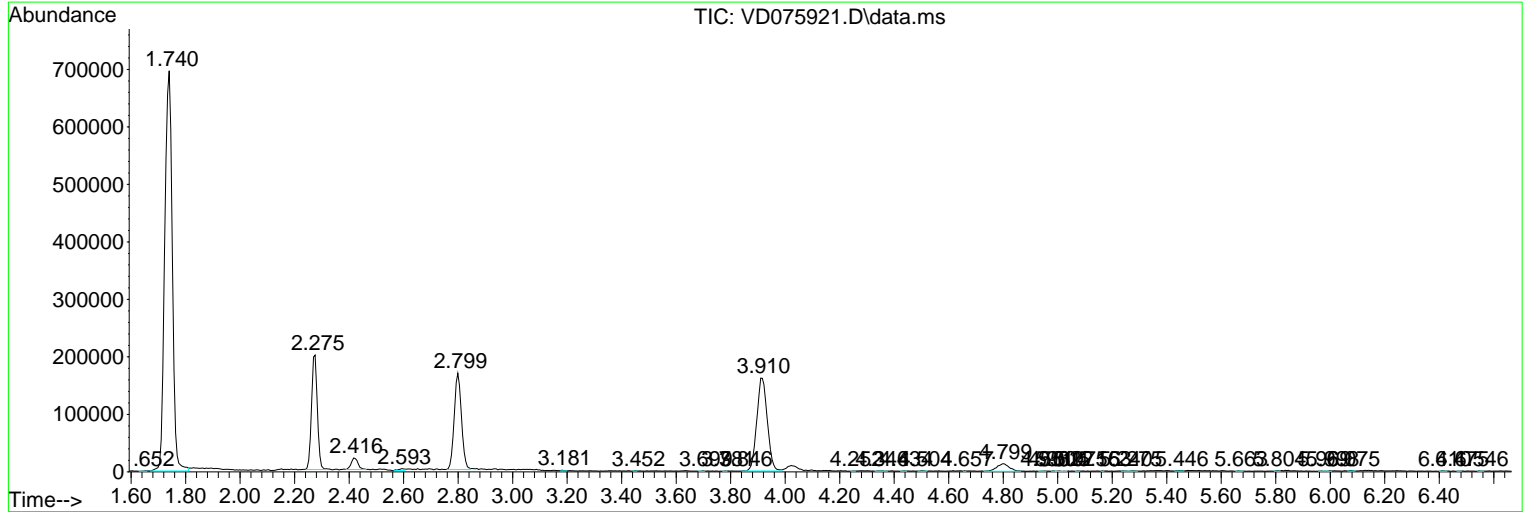
Sum of corrected areas: 12425267

Data Path : Z:\voasrv\HPCHEM1\MSVOA_D\Data\VD042923\
 Data File : VD075921.D
 Acq On : 29 Apr 2023 17:20
 Operator : KP/SY
 Sample : 02548-36
 Misc : 5.85G/10.00ml/MSVOA_D/SOIL
 ALS Vial : 13 Sample Multiplier: 1

Instrument :
 MSVOA_D
 ClientSampleId :
 DCCR6

Quant Method : Z:\voasrv\HPCHEM1\MSVOA_D\Method\SFAMDLM042023SMA.M
 Quant Title : SFAM01.0

TIC Library : C:\Database\NIST20.L
 TIC Integration Parameters: LSCINT.P



Library Search Compound Report

Data Path : Z:\voasrv\HPCHEM1\MSVOA_D\Data\VD042923\
Data File : VD075921.D
Acq On : 29 Apr 2023 17:20
Operator : KP/SY
Sample : 02548-36
Misc : 5.85G/10.00ml/MSVOA_D/SOIL
ALS Vial : 13 Sample Multiplier: 1

Instrument :
MSVOA_D
ClientSampleId :
DCCR6

Quant Method : Z:\voasrv\HPCHEM1\MSVOA_D\Method\SFAMDLM042023SMA.M
Quant Title : SFAM01.0

TIC Library : C:\Database\NIST20.L
TIC Integration Parameters: LSCINT.P

No Library Search Compounds Detected

Data Path : Z:\voasrv\HPCHEM1\MSVOA_D\Data\VD042923\
Data File : VD075921.D
Acq On : 29 Apr 2023 17:20
Operator : KP/SY
Sample : 02548-36
Misc : 5.85G/10.00ml/MSVOA_D/SOIL
ALS Vial : 13 Sample Multiplier: 1

Instrument :
MSVOA_D
ClientSampleId :
DCCR6

Quant Method : Z:\voasrv\HPCHEM1\MSVOA_D\Method\SFAMDLM042023SMA.M
Quant Title : SFAM01.0

TIC Library : C:\Database\NIST20.L
TIC Integration Parameters: LSCINT.P

TIC Top Hit name	RT	EstConc	Units	Response	--Internal Standard--			
					#	RT	Resp	Conc
