

Data Path : Z:\voasrv\HPCHEM1\MSVOA_D\Data\VD050521\
 Data File : VD069072.D
 Acq On : 05 May 2021 16:36
 Operator : VA/SY
 Sample : M2279-01
 Misc : 6.33G/5.00ml/MSVOA_D/SOIL
 ALS Vial : 10 Sample Multiplier: 1

Instrument :
 MSVOA_D
 ClientSampled :
 EME-12

Quant Time: May 06 05:46:13 2021
 Quant Method : Z:\voasrv\HPCHEM1\MSVOA_D\Method\82D050421S.M
 Quant Title : SW846 8260
 QLast Update : Wed May 05 04:16:41 2021
 Response via : Initial Calibration

Compound	R.T.	QIon	Response	Conc	Units	Dev(Min)

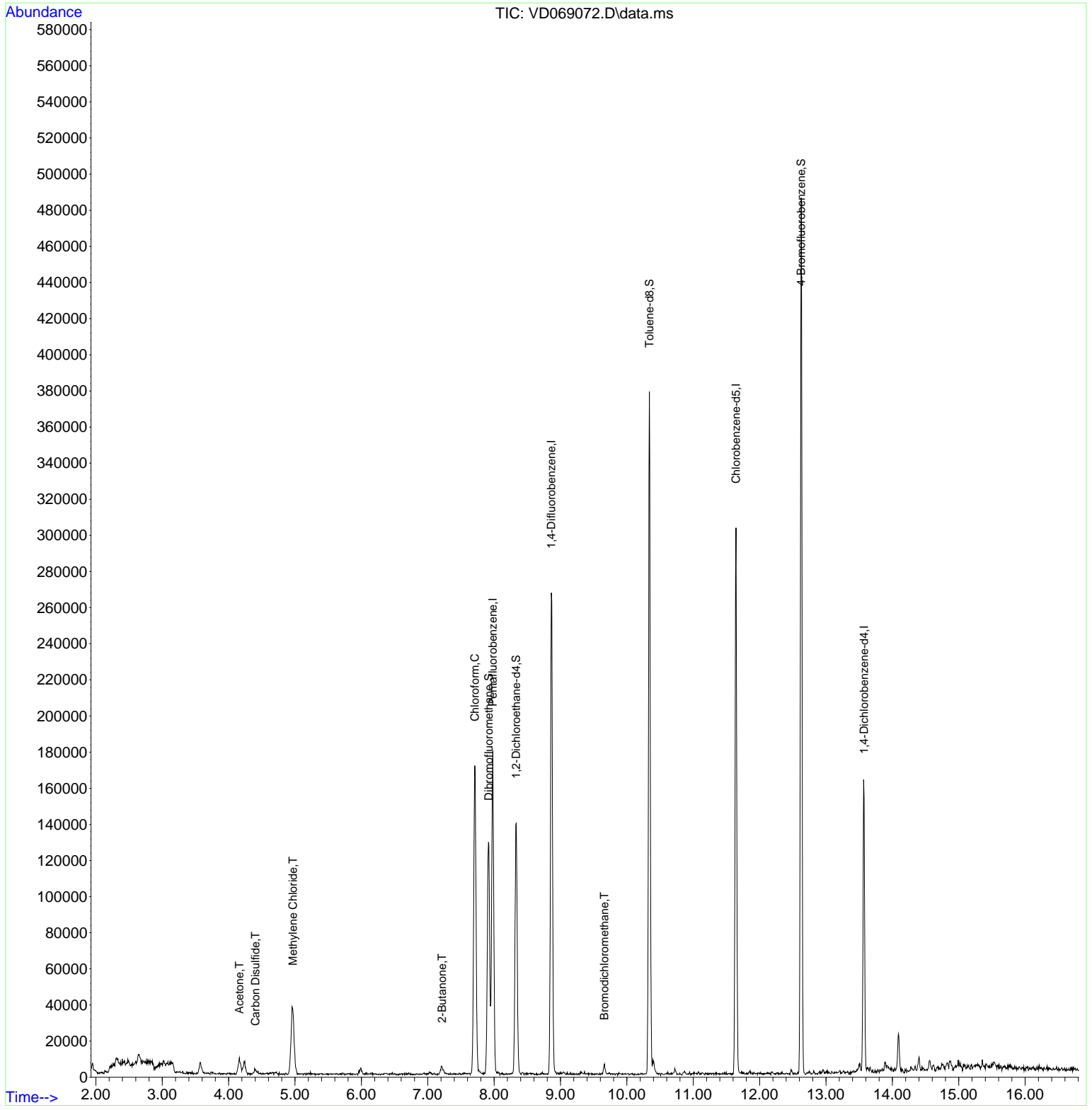
Internal Standards						
1) Pentafluorobenzene	7.979	168	114308	50.00	ug/l	0.00
34) 1,4-Difluorobenzene	8.861	114	222555	50.00	ug/l	0.00
63) Chlorobenzene-d5	11.644	117	164319	50.00	ug/l	0.00
72) 1,4-Dichlorobenzene-d4	13.573	152	39661	50.00	ug/l	0.00
System Monitoring Compounds						
33) 1,2-Dichloroethane-d4	8.332	65	116332	78.97	ug/l	0.00
Spiked Amount	50.000	Range	50 - 163	Recovery	=	157.94%
35) Dibromofluoromethane	7.920	113	93998	61.59	ug/l	0.00
Spiked Amount	50.000	Range	54 - 147	Recovery	=	123.18%
50) Toluene-d8	10.338	98	246879	43.82	ug/l	0.00
Spiked Amount	50.000	Range	49 - 140	Recovery	=	87.64%
62) 4-Bromofluorobenzene	12.626	95	57313	30.92	ug/l	0.00
Spiked Amount	50.000	Range	25 - 144	Recovery	=	61.84%
Target Compounds						
						Qvalue
16) Acetone	4.162	43	14620	50.96	ug/l	99
17) Carbon Disulfide	4.403	76	4900	1.21	ug/l	98
20) Methylene Chloride	4.967	84	29191	15.55	ug/l	91
25) 2-Butanone	7.214	43	6588	20.92	ug/l #	77
30) Chloroform	7.709	83	159176	58.48	ug/l	98
47) Bromodichloromethane	9.661	83	3533	1.47	ug/l #	72

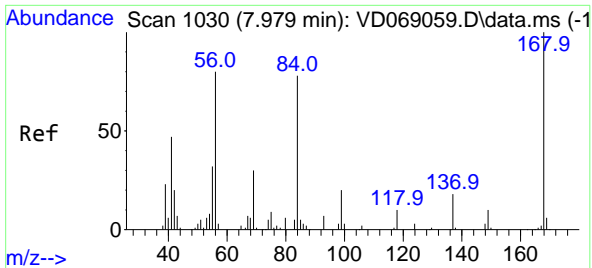
(#) = qualifier out of range (m) = manual integration (+) = signals summed

Data Path : Z:\voasrv\HPCHEM1\MSVOA_D\Data\VD050521\
 Data File : VD069072.D
 Acq On : 05 May 2021 16:36
 Operator : VA/SY
 Sample : M2279-01
 Misc : 6.33G/5.00ml/MSVOA_D/SOIL
 ALS Vial : 10 Sample Multiplier: 1

Instrument :
 MSVOA_D
ClientSampled :
 EME-12

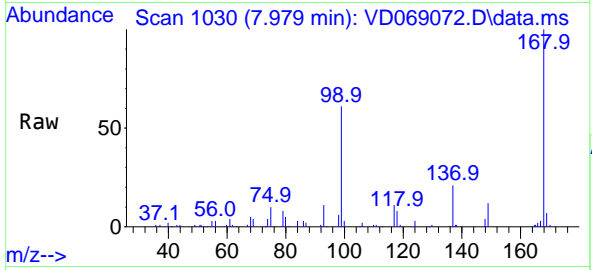
Quant Time: May 06 05:46:13 2021
 Quant Method : Z:\voasrv\HPCHEM1\MSVOA_D\Method\82D050421S.M
 Quant Title : SW846 8260
 QLast Update : Wed May 05 04:16:41 2021
 Response via : Initial Calibration



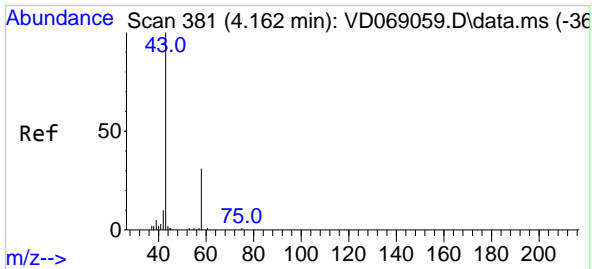
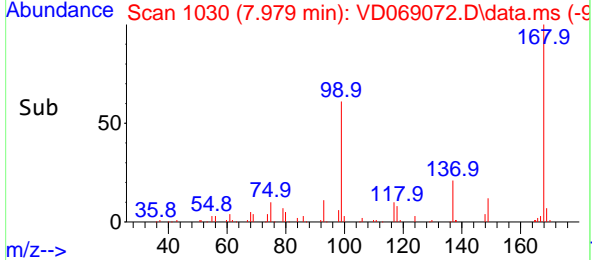
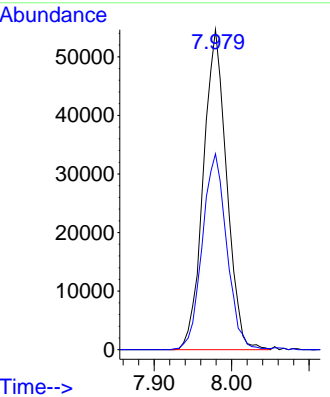


#1
 Pentafluorobenzene
 Concen: 50.00 ug/l
 RT: 7.979 min Scan# 1030
 Delta R.T. 0.000 min
 Lab File: VD069072.D
 Acq: 05 May 2021 16:36

Instrument :
 MSVOA_D
 ClientSampled :
 EME-12

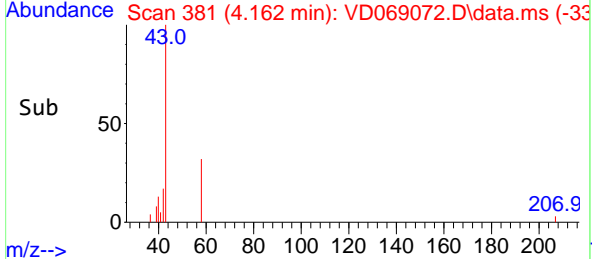
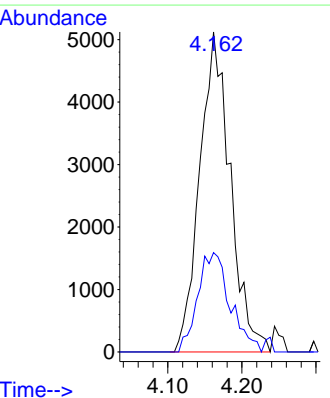
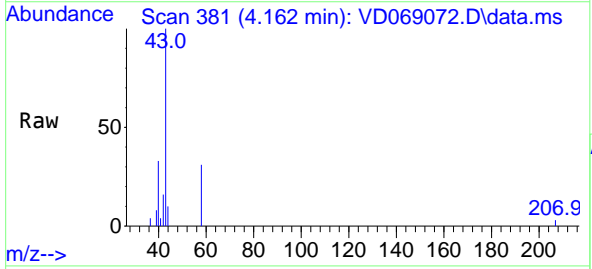


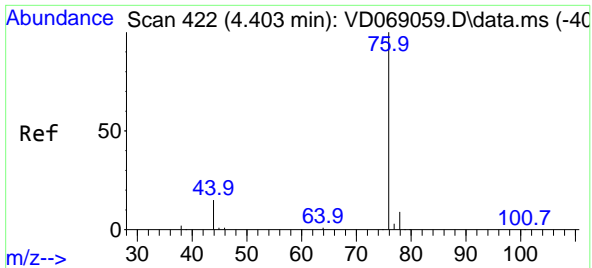
Tgt Ion:168 Resp: 114308
 Ion Ratio Lower Upper
 168 100
 99 61.2 52.6 78.8



#16
 Acetone
 Concen: 50.96 ug/l
 RT: 4.162 min Scan# 381
 Delta R.T. -0.000 min
 Lab File: VD069072.D
 Acq: 05 May 2021 16:36

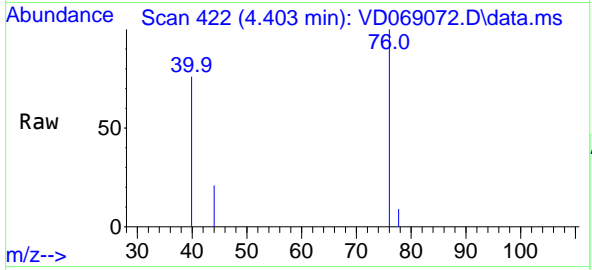
Tgt Ion: 43 Resp: 14620
 Ion Ratio Lower Upper
 43 100
 58 31.0 24.5 36.7



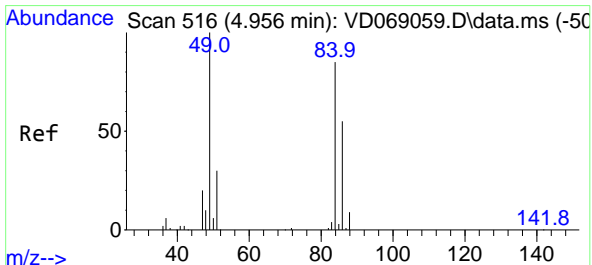
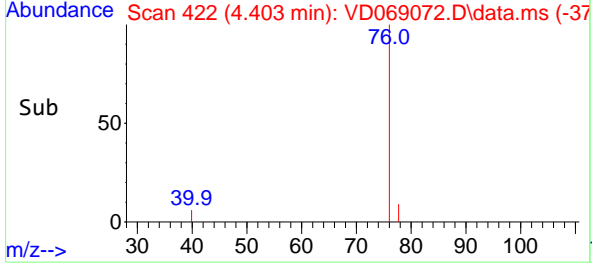
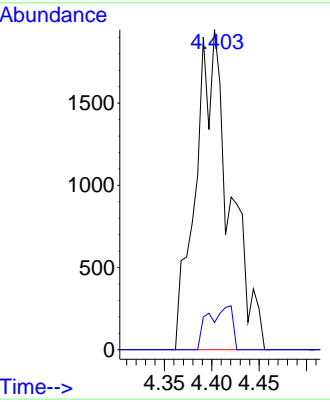


#17
 Carbon Disulfide
 Concen: 1.21 ug/l
 RT: 4.403 min Scan# 422
 Delta R.T. 0.000 min
 Lab File: VD069072.D
 Acq: 05 May 2021 16:36

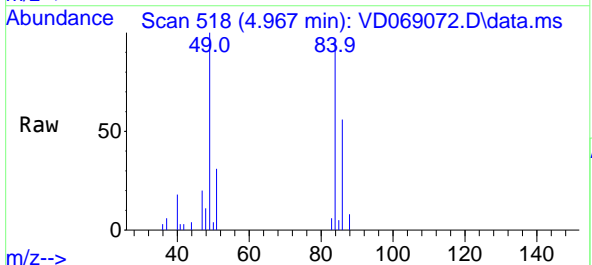
Instrument :
 MSVOA_D
 ClientSampled :
 EME-12



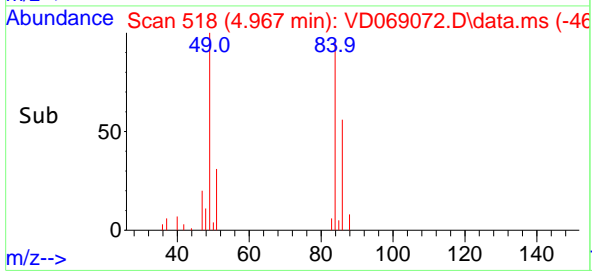
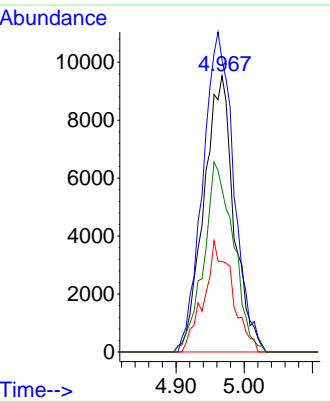
Tgt Ion: 76 Resp: 4900
 Ion Ratio Lower Upper
 76 100
 78 8.5 7.4 11.2

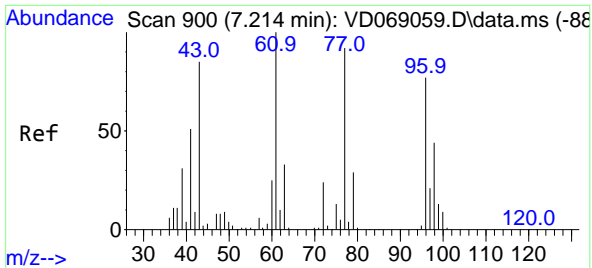


#20
 Methylene Chloride
 Concen: 15.55 ug/l
 RT: 4.967 min Scan# 518
 Delta R.T. 0.011 min
 Lab File: VD069072.D
 Acq: 05 May 2021 16:36



Tgt Ion: 84 Resp: 29191
 Ion Ratio Lower Upper
 84 100
 49 105.6 93.9 140.9
 51 32.8 27.9 41.9
 86 58.9 52.1 78.1

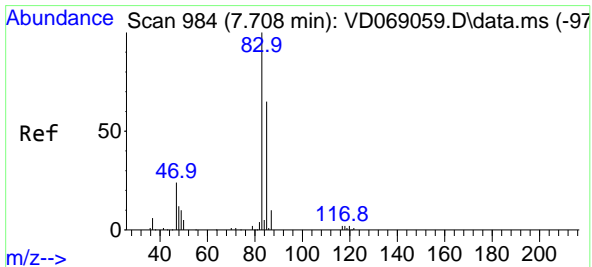
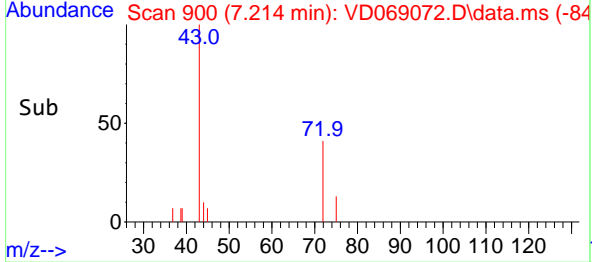
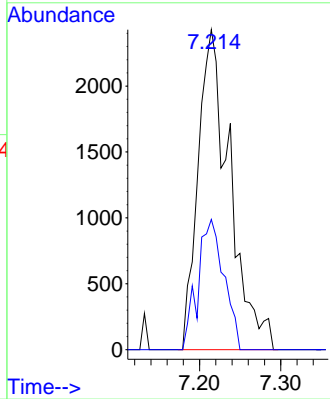
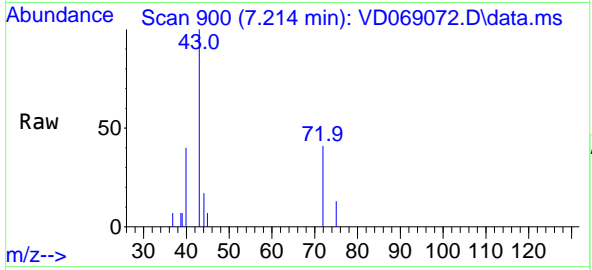




#25
 2-Butanone
 Concen: 20.92 ug/l
 RT: 7.214 min Scan# 900
 Delta R.T. 0.000 min
 Lab File: VD069072.D
 Acq: 05 May 2021 16:36

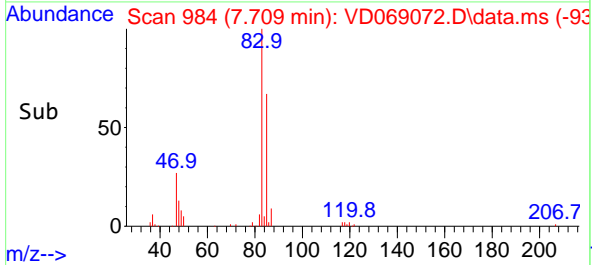
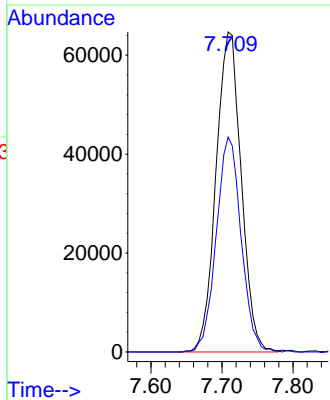
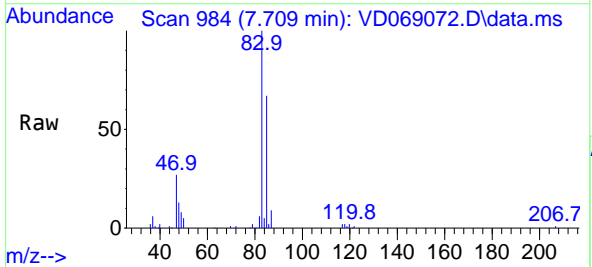
Instrument :
 MSVOA_D
ClientSampled :
 EME-12

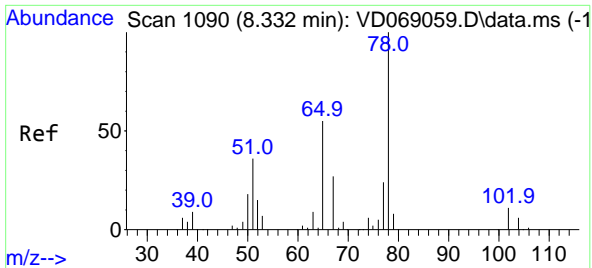
Tgt Ion: 43 Resp: 6588
 Ion Ratio Lower Upper
 43 100
 72 40.7 23.0 34.4#



#30
 Chloroform
 Concen: 58.48 ug/l
 RT: 7.709 min Scan# 984
 Delta R.T. 0.000 min
 Lab File: VD069072.D
 Acq: 05 May 2021 16:36

Tgt Ion: 83 Resp: 159176
 Ion Ratio Lower Upper
 83 100
 85 67.1 52.4 78.6

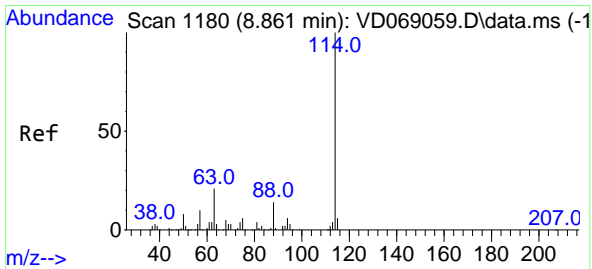
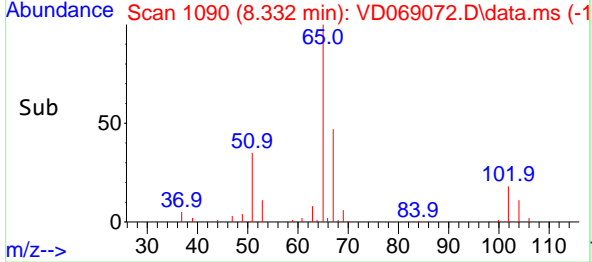
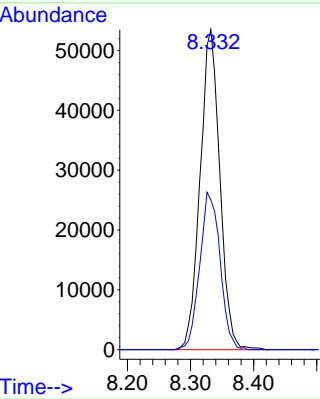
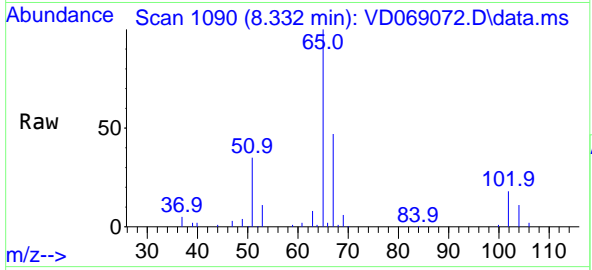




#33
 1,2-Dichloroethane-d4
 Concen: 78.97 ug/l
 RT: 8.332 min Scan# 1090
 Delta R.T. 0.000 min
 Lab File: VD069072.D
 Acq: 05 May 2021 16:36

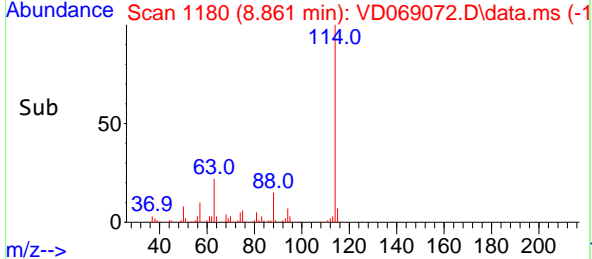
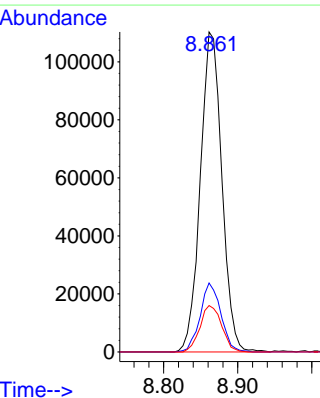
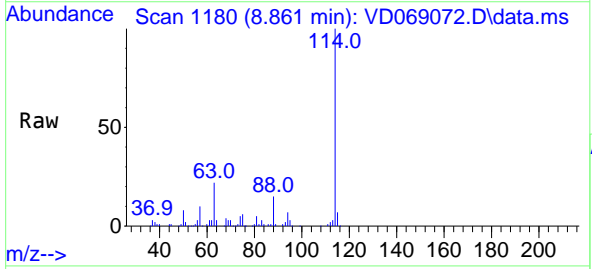
Instrument :
 MSVOA_D
 ClientSampled :
 EME-12

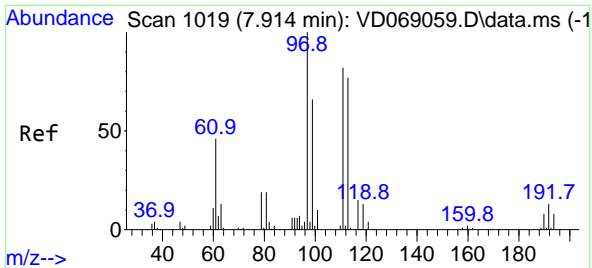
Tgt Ion: 65 Resp: 116332
 Ion Ratio Lower Upper
 65 100
 67 50.5 0.0 103.4



#34
 1,4-Difluorobenzene
 Concen: 50.00 ug/l
 RT: 8.861 min Scan# 1180
 Delta R.T. 0.000 min
 Lab File: VD069072.D
 Acq: 05 May 2021 16:36

Tgt Ion: 114 Resp: 222555
 Ion Ratio Lower Upper
 114 100
 63 21.6 0.0 41.4
 88 14.5 0.0 27.8



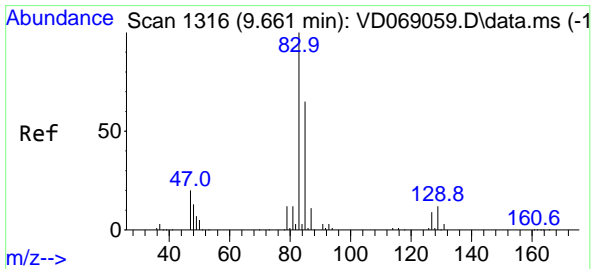
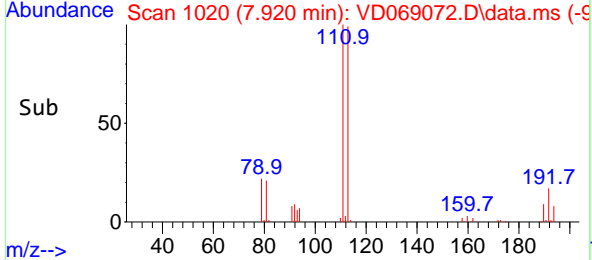
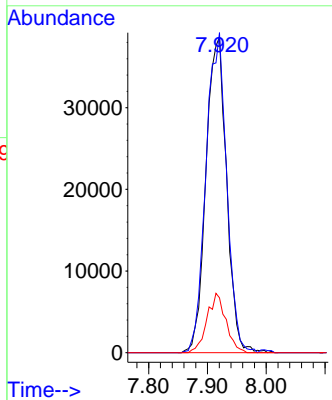
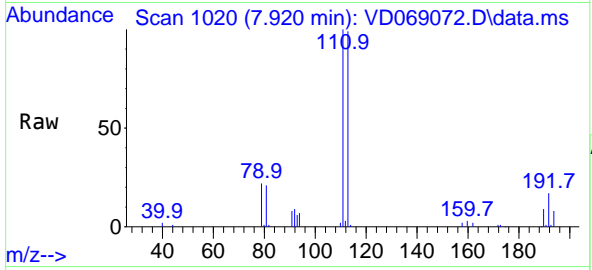


#35
 Dibromofluoromethane
 Concen: 61.59 ug/l
 RT: 7.920 min Scan# 1020
 Delta R.T. 0.006 min
 Lab File: VD069072.D
 Acq: 05 May 2021 16:36

Instrument :
 MSVOA_D
 ClientSampled :
 EME-12

Tgt Ion:113 Resp: 93998

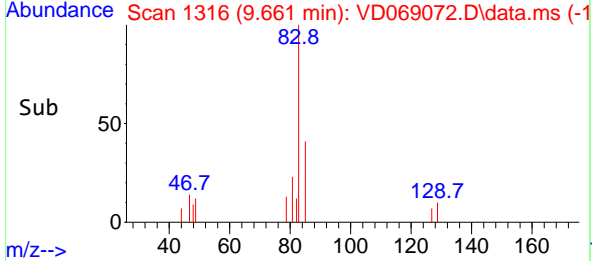
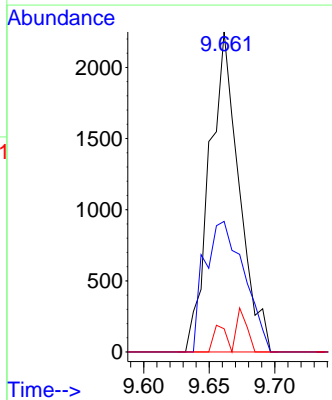
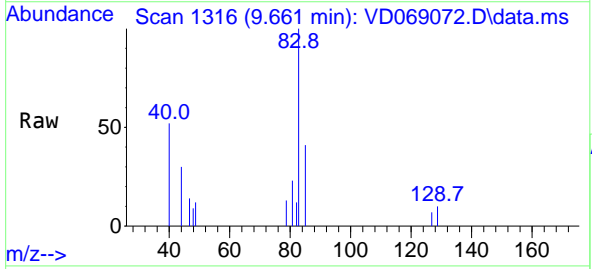
Ion	Ratio	Lower	Upper
113	100		
111	101.9	84.6	126.8
192	17.2	13.5	20.3

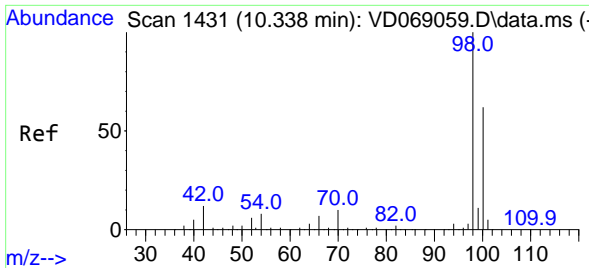


#47
 Bromodichloromethane
 Concen: 1.47 ug/l
 RT: 9.661 min Scan# 1316
 Delta R.T. 0.000 min
 Lab File: VD069072.D
 Acq: 05 May 2021 16:36

Tgt Ion: 83 Resp: 3533

Ion	Ratio	Lower	Upper
83	100		
85	40.8	52.1	78.1#
127	7.3	7.0	10.4

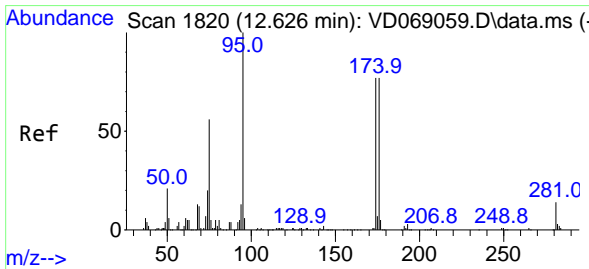
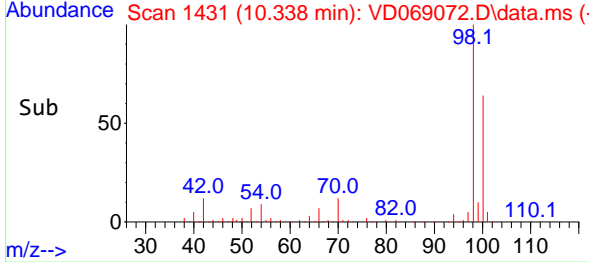
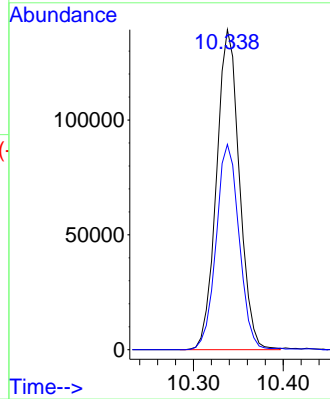
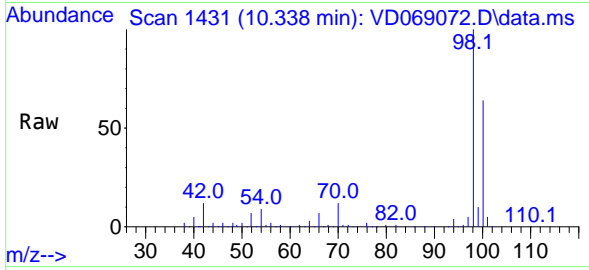




#50
 Toluene-d8
 Concen: 43.82 ug/l
 RT: 10.338 min Scan# 1431
 Delta R.T. 0.000 min
 Lab File: VD069072.D
 Acq: 05 May 2021 16:36

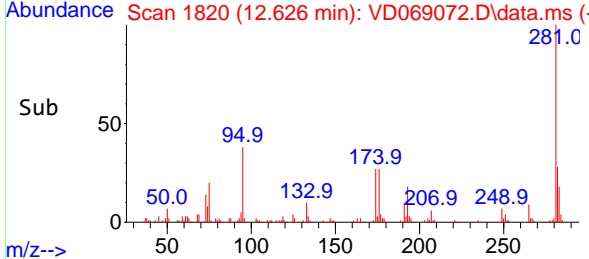
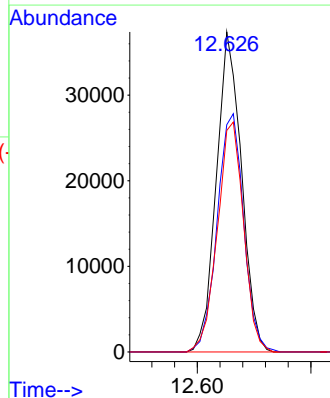
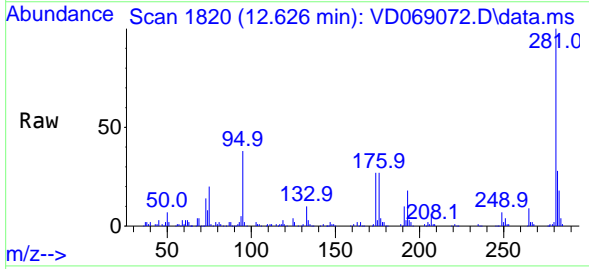
Instrument :
 MSVOA_D
 ClientSampled :
 EME-12

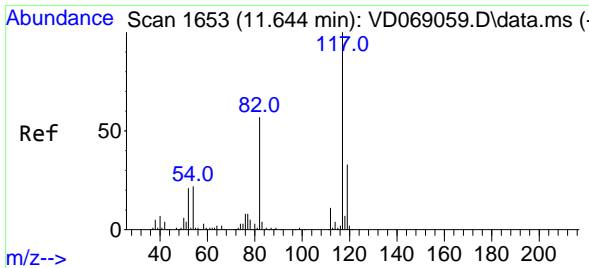
Tgt Ion: 98 Resp: 246879
 Ion Ratio Lower Upper
 98 100
 100 64.5 51.6 77.4



#62
 4-Bromofluorobenzene
 Concen: 30.92 ug/l
 RT: 12.626 min Scan# 1820
 Delta R.T. 0.000 min
 Lab File: VD069072.D
 Acq: 05 May 2021 16:36

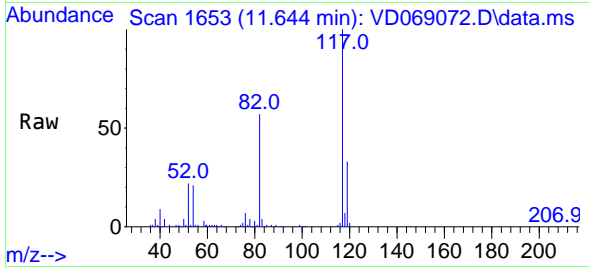
Tgt Ion: 95 Resp: 57313
 Ion Ratio Lower Upper
 95 100
 174 78.7 0.0 156.0
 176 74.9 0.0 149.4



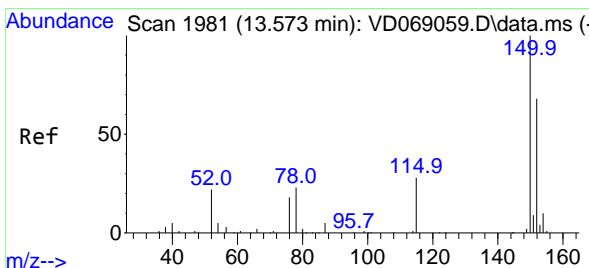
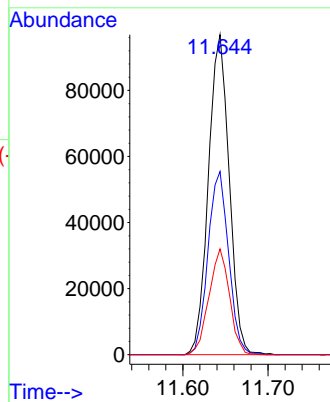
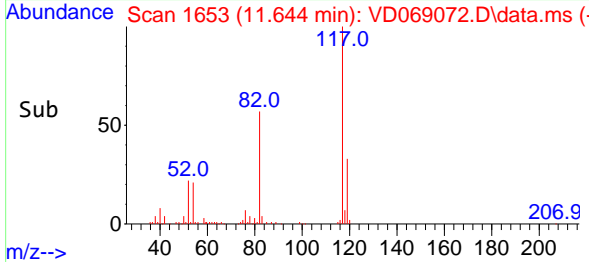


#63
 Chlorobenzene-d5
 Concen: 50.00 ug/l
 RT: 11.644 min Scan# 1653
 Delta R.T. 0.000 min
 Lab File: VD069072.D
 Acq: 05 May 2021 16:36

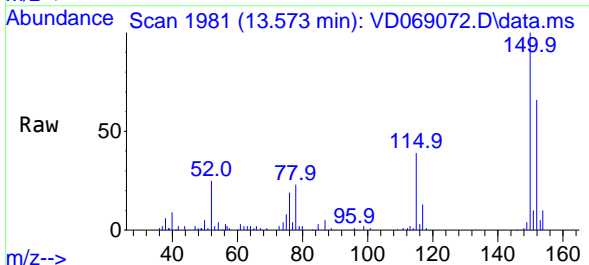
Instrument :
 MSVOA_D
 ClientSampled :
 EME-12



Tgt Ion:117 Resp: 164319
 Ion Ratio Lower Upper
 117 100
 82 57.2 45.4 68.2
 119 33.1 26.8 40.2



#72
 1,4-Dichlorobenzene-d4
 Concen: 50.00 ug/l
 RT: 13.573 min Scan# 1981
 Delta R.T. 0.000 min
 Lab File: VD069072.D
 Acq: 05 May 2021 16:36



Tgt Ion:152 Resp: 39661
 Ion Ratio Lower Upper
 152 100
 115 61.6 30.5 91.5
 150 158.9 0.0 340.8

