

Data Path : Z:\VOASRV\HPCHEM1\MSVOA D\DATA\VD050719\
 Data File : VD062148.D
 Acq On : 7 May 2019 23:29
 Operator : FY/SY
 Sample : K2673-01
 Misc : 5.02g/5mL/MSVOA D/SOIL
 ALS Vial : 21 Sample Multiplier: 1

Instrument :
 MSVOA_D
 ClientSampleID :
 SB-11-1.5-2.0

Quant Time: May 08 04:33:02 2019
 Quant Method : Z:\VOASRV\HPCHEM1\MSVOA_D\METHOD\82D050719S.M
 Quant Title : SW846 8260
 QLast Update : Tue May 07 14:26:29 2019
 Response via : Initial Calibration

Internal Standards	R.T.	QIon	Response	Conc	Units	Dev(Min)
1) Pentafluorobenzene	7.01	168	4061	50.00	ug/l	0.00
34) 1,4-Difluorobenzene	8.19	114	7672	50.00	ug/l	0.00
63) Chlorobenzene-d5	12.36	117	7815	50.00	ug/l	0.00
72) 1,4-Dichlorobenzene-d4	14.51	152	3052	50.00	ug/l	0.00

System Monitoring Compounds

33) 1,2-Dichloroethane-d4	7.43	65	1955	51.80	ug/l	0.01
Spiked Amount	50.000		Recovery	=	103.60%	
35) Dibromofluoromethane	6.88	113	1543	24.24	ug/l	0.00
Spiked Amount	50.000		Recovery	=	48.48%	
50) Toluene-d8	10.39	98	6676	43.50	ug/l	0.00
Spiked Amount	50.000		Recovery	=	87.00%	
62) 4-Bromofluorobenzene	13.55	95	2745	44.54	ug/l	0.00
Spiked Amount	50.000		Recovery	=	89.08%	

Target Compounds

						Qvalue
5) Bromomethane	2.15	94	261	40.385	ug/l #	12
10) Methyl Iodide	3.31	142	992	16.181	ug/l #	80
51) 4-Methyl-2-Pentanone	10.26	43	247	10.157	ug/l #	37
52) Toluene	10.51	92	529	5.724	ug/l #	37
59) 2-Hexanone	11.52	43	200	11.158	ug/l #	27
65) Chlorobenzene	12.38	112	1207	8.292	ug/l #	42
67) Ethyl Benzene	12.51	91	1672	6.861	ug/l #	44
68) m/p-Xylenes	12.50	106	227	2.560	ug/l	94
69) o-Xylene	13.03	106	273	3.312	ug/l	71
70) Styrene	13.05	104	662	4.741	ug/l #	31
71) Bromoform	13.22	173	213	4.833	ug/l #	35
73) Isopropylbenzene	13.40	105	2282	12.474	ug/l	92
74) N-amyl acetate	13.24	43	194	4.045	ug/l #	49
76) 1,2,3-Trichloropropane	13.71	75	206	5.680	ug/l #	42
77) Bromobenzene	13.65	156	415	8.103	ug/l	92
78) n-propylbenzene	13.76	91	2515	11.524	ug/l	98
79) 2-Chlorotoluene	13.83	91	1141	9.129	ug/l #	61
80) 1,3,5-Trimethylbenzene	13.92	105	1754	11.385	ug/l	98
81) trans-1,4-Dichloro-2-buten	13.55	75	909	88.775	ug/l #	16
82) 4-Chlorotoluene	13.94	91	1928	13.109	ug/l #	37
83) tert-Butylbenzene	14.18	119	1299	7.502	ug/l #	54
84) 1,2,4-Trimethylbenzene	14.22	105	1981	12.814	ug/l	87
85) sec-Butylbenzene	14.35	105	2735	14.406	ug/l #	60
86) p-Isopropyltoluene	14.48	119	1959	11.549	ug/l #	52
87) 1,3-Dichlorobenzene	14.44	146	1624	17.359	ug/l	75
88) 1,4-Dichlorobenzene	14.53	146	1472	16.013	ug/l	91
89) n-Butylbenzene	14.79	91	2080	13.662	ug/l #	77
90) Hexachloroethane	15.00	117	240	5.203	ug/l #	20
91) 1,2-Dichlorobenzene	14.80	146	1135	14.731	ug/l #	63
93) 1,2,4-Trichlorobenzene	15.94	180	632	11.270	ug/l #	66
94) Hexachlorobutadiene	16.03	225	523	12.539	ug/l	96
95) Naphthalene	16.11	128	1541	19.682	ug/l #	70
96) 1,2,3-Trichlorobenzene	16.26	180	514	14.577	ug/l #	72

Data Path : Z:\VOASRV\HPCHEM1\MSVOA D\DATA\VD050719\
 Data File : VD062148.D
 Acq On : 7 May 2019 23:29
 Operator : FY/SY
 Sample : K2673-01
 Misc : 5.02g/5mL/MSVOA D/SOIL
 ALS Vial : 21 Sample Multiplier: 1

Instrument :
 MSVOA_D
ClientSampleId :
 SB-11-1.5-2.0

Quant Time: May 08 04:33:02 2019
 Quant Method : Z:\VOASRV\HPCHEM1\MSVOA_D\METHOD\82D050719S.M
 Quant Title : SW846 8260
 QLast Update : Tue May 07 14:26:29 2019
 Response via : Initial Calibration

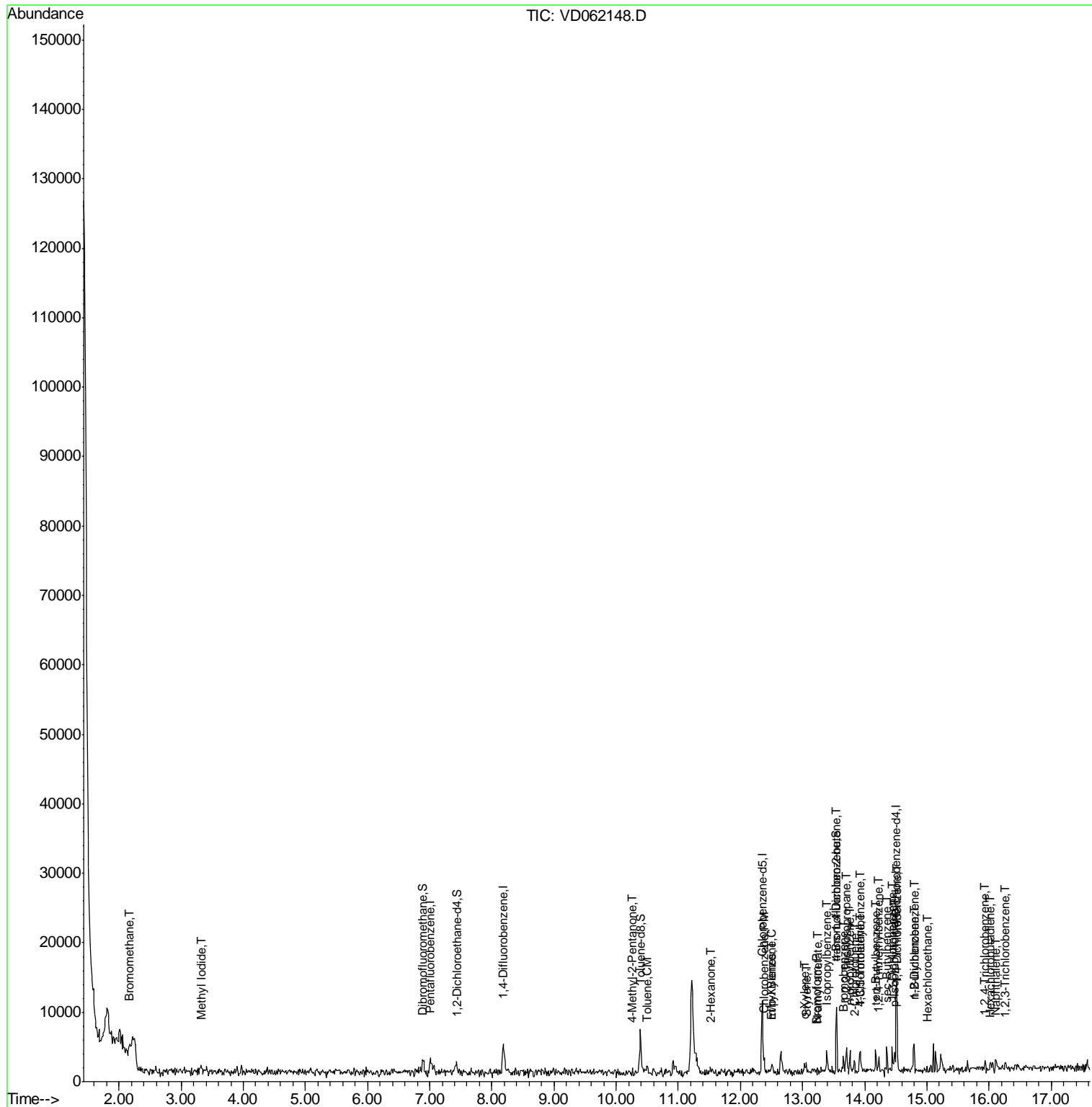
Internal Standards	R.T.	QIon	Response	Conc	Units	Dev(Min)
--------------------	------	------	----------	------	-------	----------

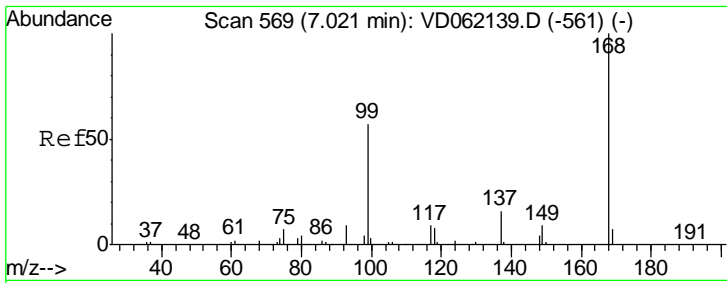
(#) = qualifier out of range (m) = manual integration (+) = signals summed

Data Path : Z:\VOASRV\HPCHEM1\MSVOA D\DATA\VD050719\
 Data File : VD062148.D
 Acq On : 7 May 2019 23:29
 Operator : FY/SY
 Sample : K2673-01
 Misc : 5.02µ/5mL/MSVOA D/SOIL
 ALS Vial : 21 Sample Multiplier: 1

Instrument :
 MSVOA_D
 Client Sampled :
 SB-11-1.5-2.0

Quant Time: May 08 04:33:02 2019
 Quant Method : Z:\VOASRV\HPCHEM1\MSVOA_D\METHOD\82D050719S.M
 Quant Title : SW846 8260
 QLast Update : Tue May 07 14:26:29 2019
 Response via : Initial Calibration

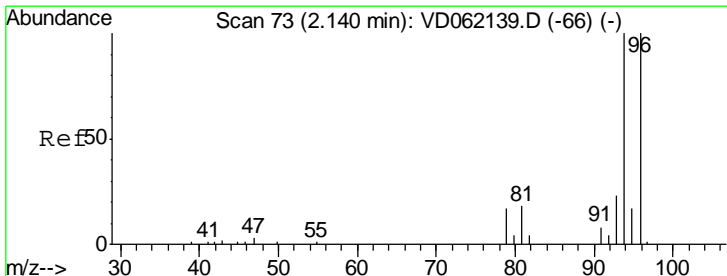
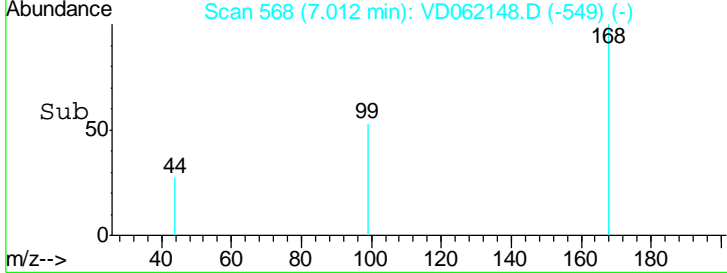
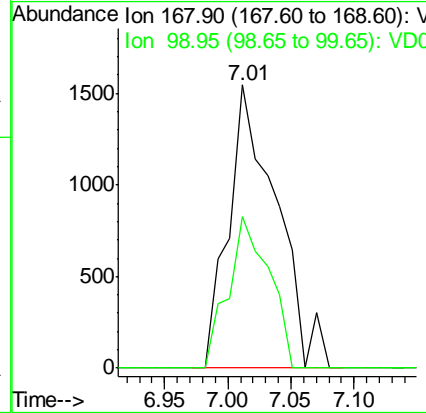
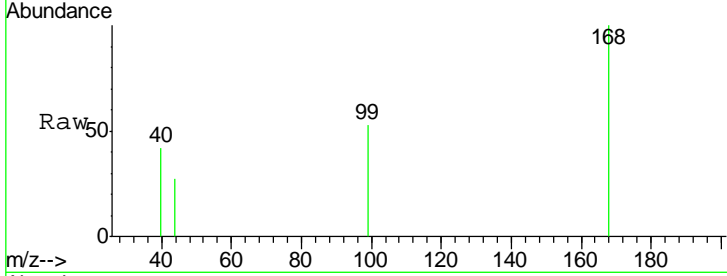




#1
 Pentafluorobenzene
 Concen: 50.000 ug/l
 RT: 7.01 min Scan# 568
 Delta R.T. -0.01 min
 Lab File: VD062148.D
 Acq: 7 May 2019 23:29

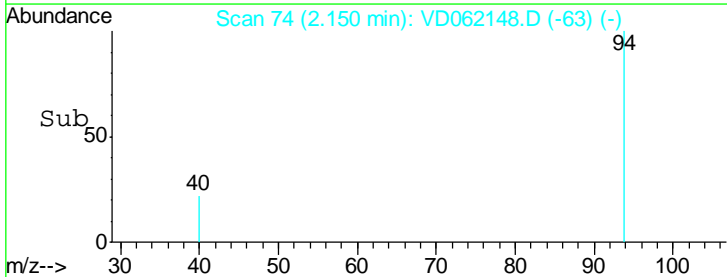
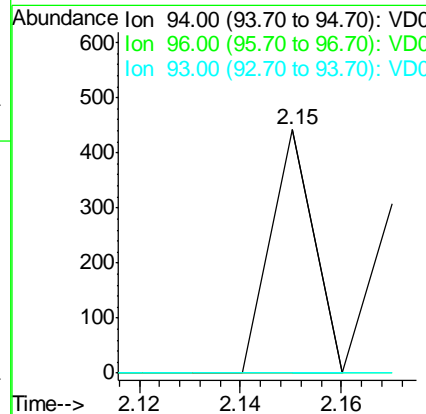
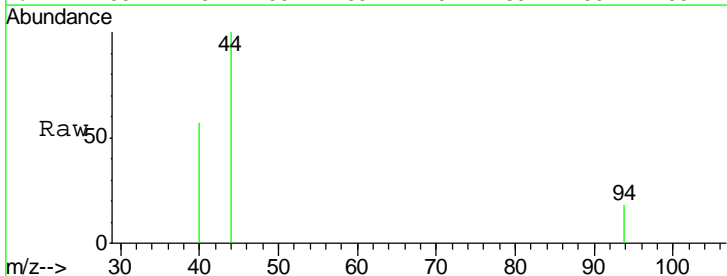
Instrument :
 MSVOA_D
 ClientSampled :
 SB-11-1.5-2.0

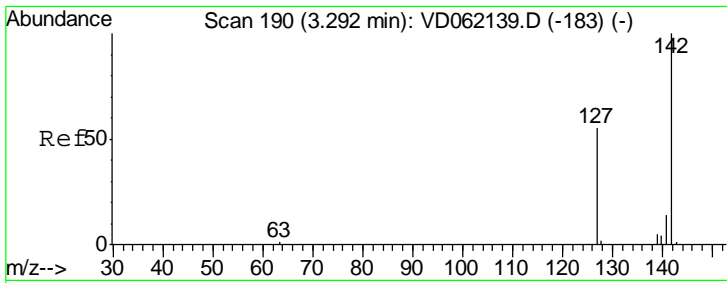
Tgt Ion: 168 Resp: 4061
 Ion Ratio Lower Upper
 168 100
 99 53.4 46.5 69.7



#5
 Bromomethane
 Concen: 40.385 ug/l
 RT: 2.15 min Scan# 74
 Delta R.T. 0.01 min
 Lab File: VD062148.D
 Acq: 7 May 2019 23:29

Tgt Ion: 94 Resp: 261
 Ion Ratio Lower Upper
 94 100
 96 0.0 76.6 115.0#
 93 0.0 18.5 27.7#

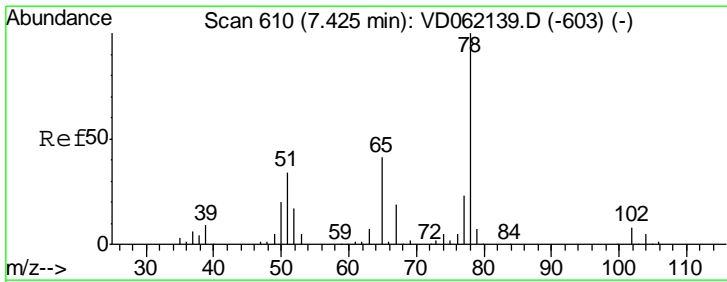
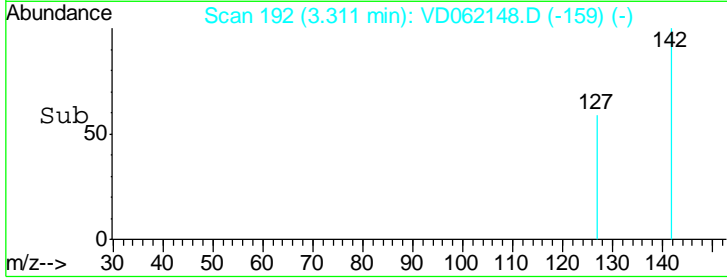
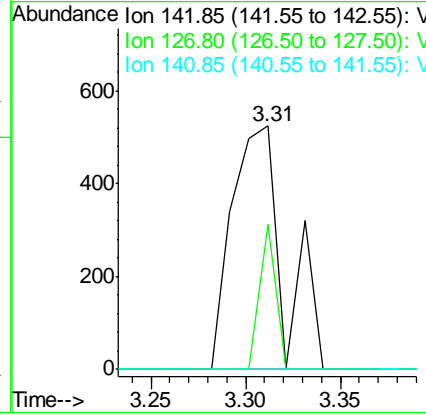
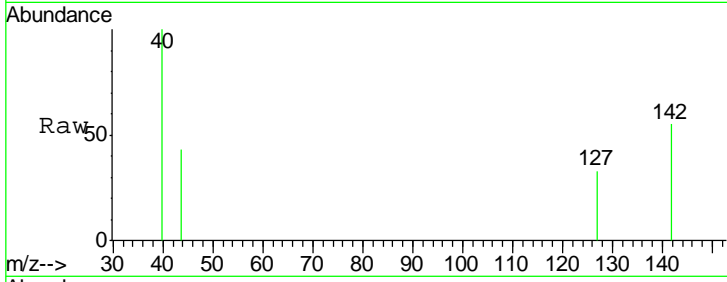




#10
Methyl Iodide
Concen: 16.181 ug/l
RT: 3.31 min Scan# 192
Delta R.T. 0.02 min
Lab File: VD062148.D
Acq: 7 May 2019 23:29

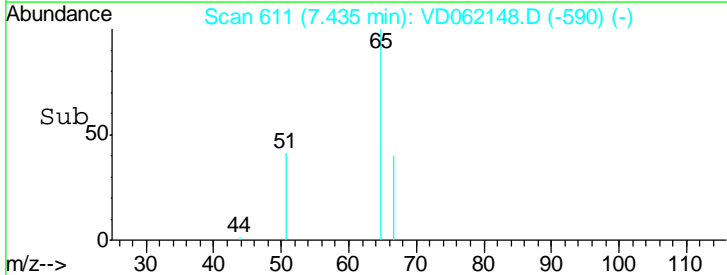
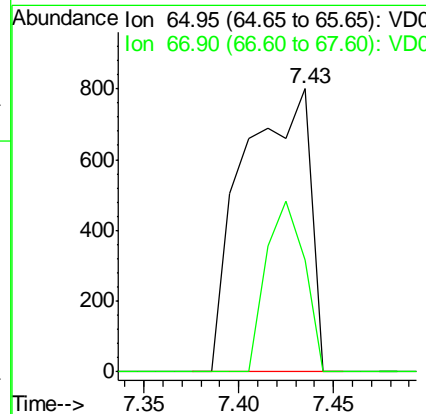
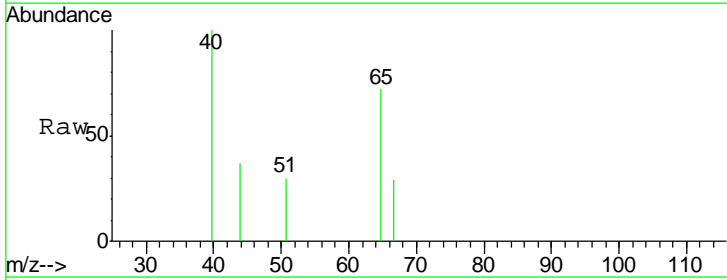
Instrument :
MSVOA_D
ClientSampled :
SB-11-1.5-2.0

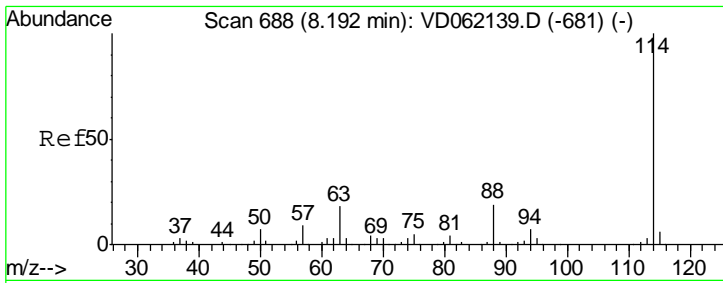
Tgt Ion	Resp	Lower	Upper
142	992		
127	59.4	38.8	58.2#
141	0.0	11.4	17.0#



#33
1,2-Dichloroethane-d4
Concen: 51.803 ug/l
RT: 7.43 min Scan# 611
Delta R.T. 0.01 min
Lab File: VD062148.D
Acq: 7 May 2019 23:29

Tgt Ion	Resp	Lower	Upper
65	1955		
67	39.6	0.0	98.0

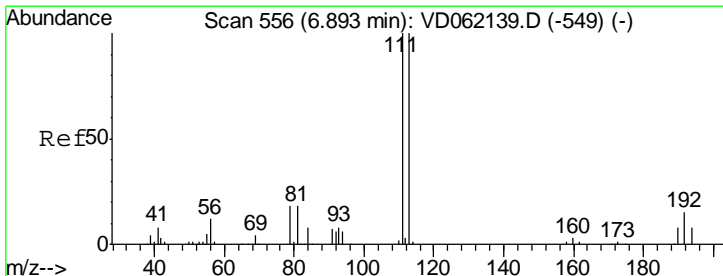
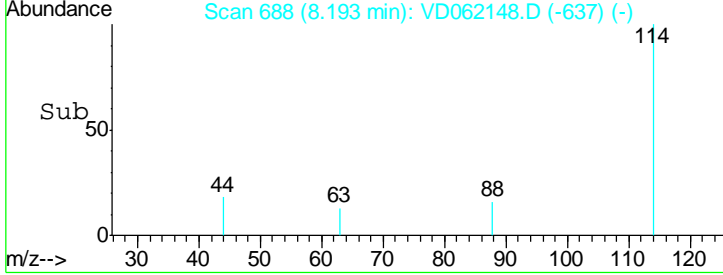
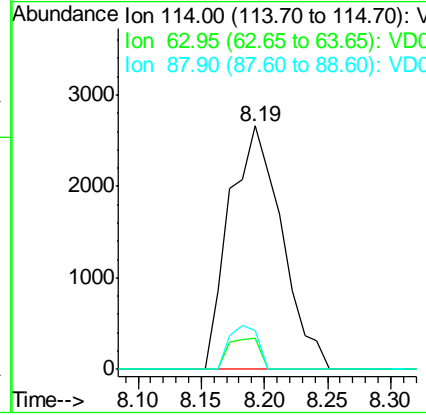
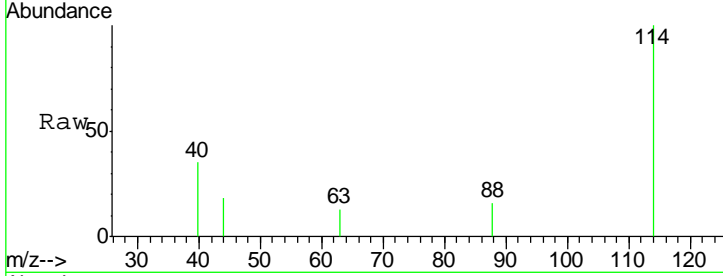




#34
 1,4-Difluorobenzene
 Concen: 50.000 ug/l
 RT: 8.19 min Scan# 688
 Delta R.T. 0.00 min
 Lab File: VD062148.D
 Acq: 7 May 2019 23:29

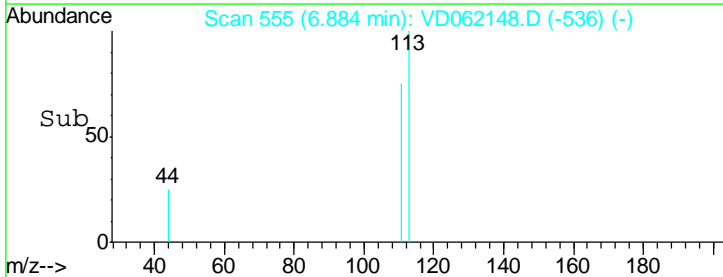
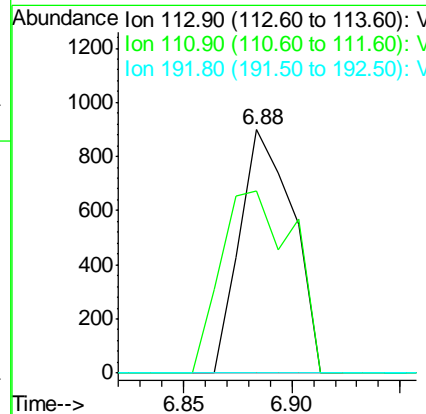
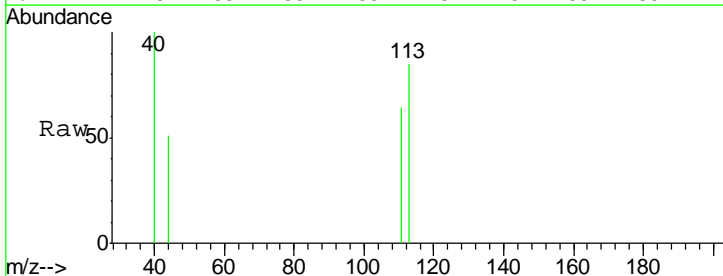
Instrument :
 MSVOA_D
 ClientSampleId :
 SB-11-1.5-2.0

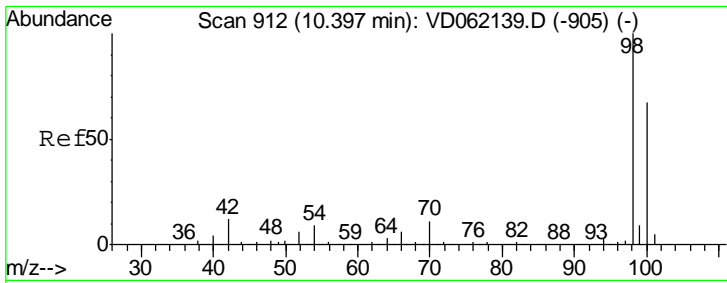
Tgt Ion	Resp	Lower	Upper
114	100		
63	12.8	0.0	32.4
88	16.1	0.0	33.6



#35
 Dibromofluoromethane
 Concen: 24.240 ug/l
 RT: 6.88 min Scan# 555
 Delta R.T. -0.01 min
 Lab File: VD062148.D
 Acq: 7 May 2019 23:29

Tgt Ion	Resp	Lower	Upper
113	100		
111	74.7	78.5	117.7#
192	0.0	13.0	19.4#

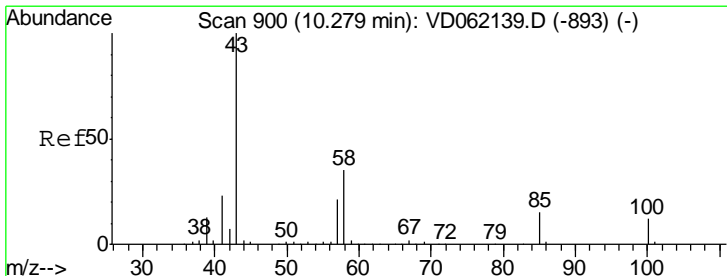
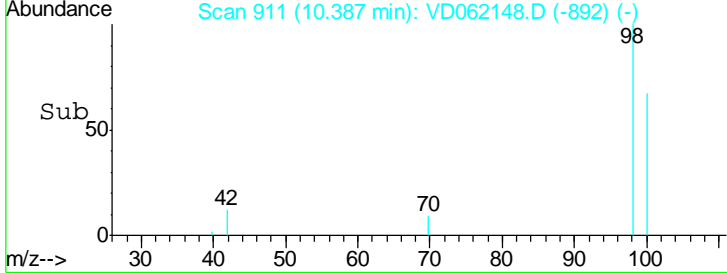
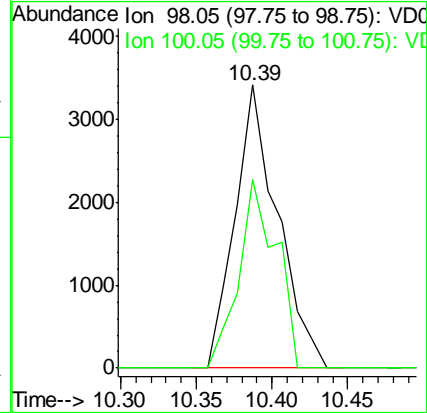
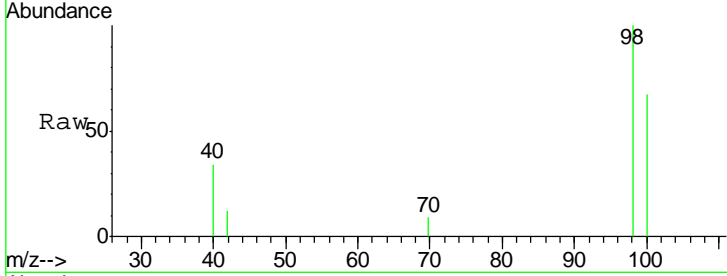




#50
 Toluene-d8
 Concen: 43.498 ug/l
 RT: 10.39 min Scan# 911
 Delta R.T. -0.01 min
 Lab File: VD062148.D
 Acq: 7 May 2019 23:29

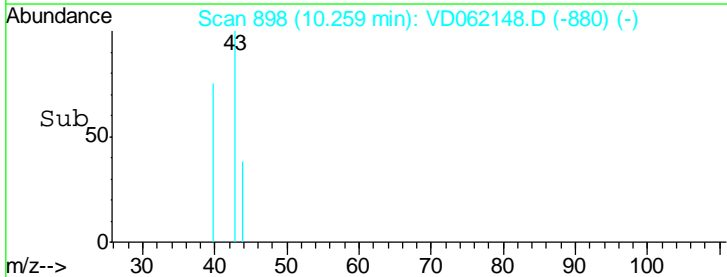
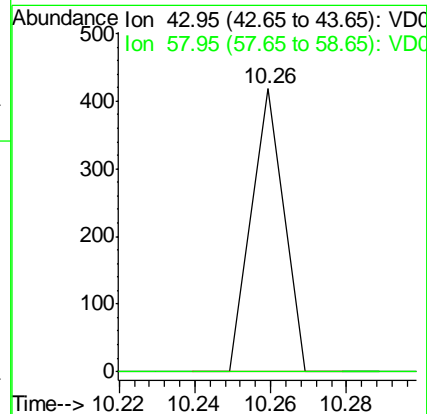
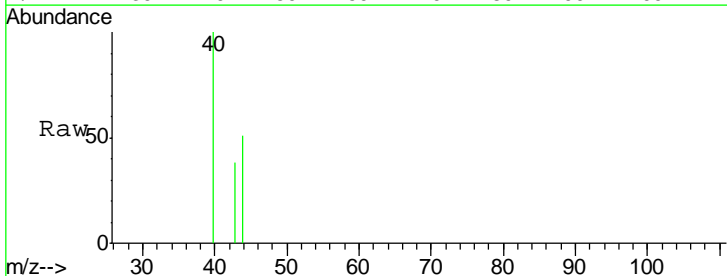
Instrument :
 MSVOA_D
ClientSampled :
 SB-11-1.5-2.0

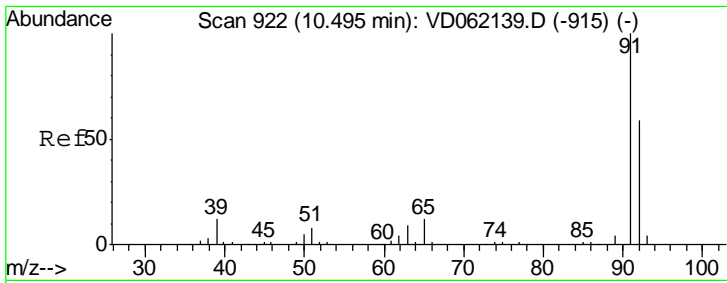
Tot Ion: 98 Resp: 6676
 Ion Ratio Lower Upper
 98 100
 100 66.9 53.8 80.8



#51
 4-Methyl-2-Pentanone
 Concen: 10.157 ug/l
 RT: 10.26 min Scan# 898
 Delta R.T. -0.02 min
 Lab File: VD062148.D
 Acq: 7 May 2019 23:29

Tgt Ion: 43 Resp: 247
 Ion Ratio Lower Upper
 43 100
 58 0.0 30.4 45.6#

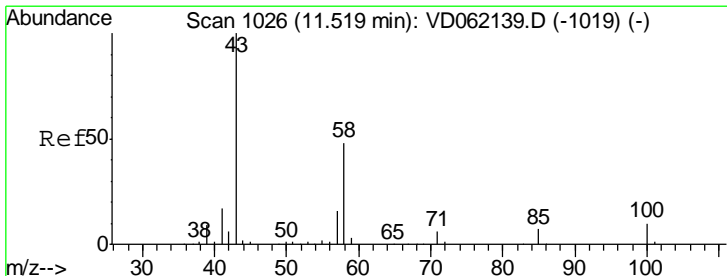
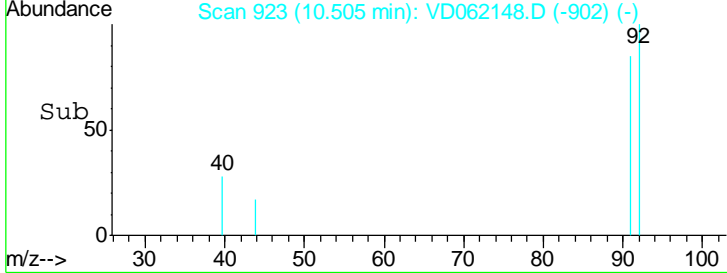
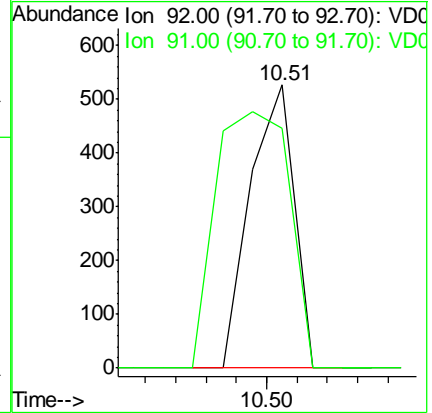
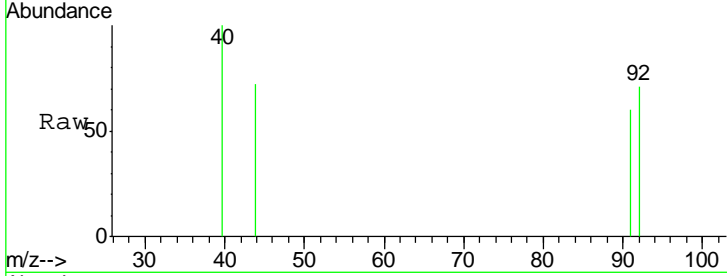




#52
 Toluene
 Concen: 5.724 ug/l
 RT: 10.51 min Scan# 923
 Delta R.T. 0.01 min
 Lab File: VD062148.D
 Acq: 7 May 2019 23:29

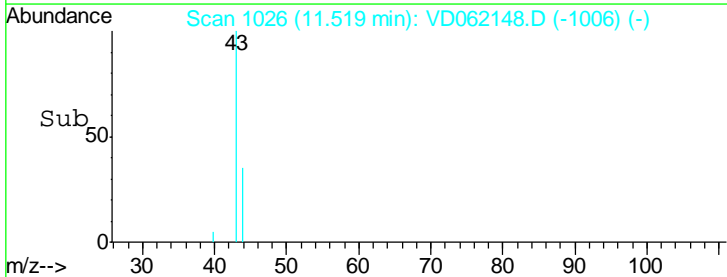
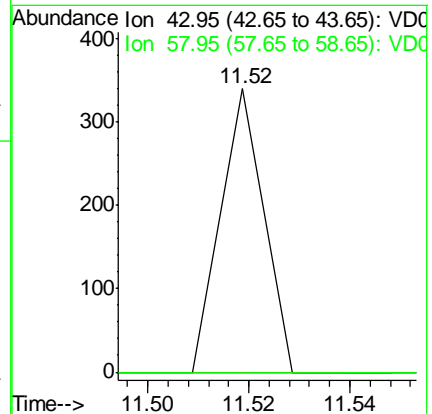
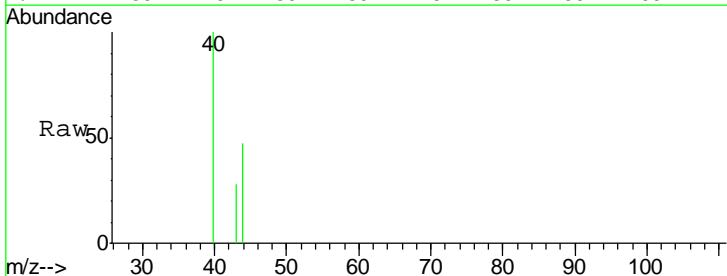
Instrument :
 MSVOA_D
 ClientSampled :
 SB-11-1.5-2.0

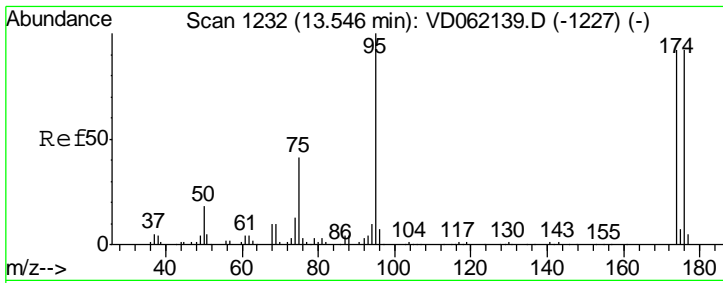
Tgt Ion: 92 Resp: 529
 Ion Ratio Lower Upper
 92 100
 91 84.6 136.6 204.8#



#59
 2-Hexanone
 Concen: 11.158 ug/l
 RT: 11.52 min Scan# 1026
 Delta R.T. 0.00 min
 Lab File: VD062148.D
 Acq: 7 May 2019 23:29

Tgt Ion: 43 Resp: 200
 Ion Ratio Lower Upper
 43 100
 58 0.0 25.4 76.4#

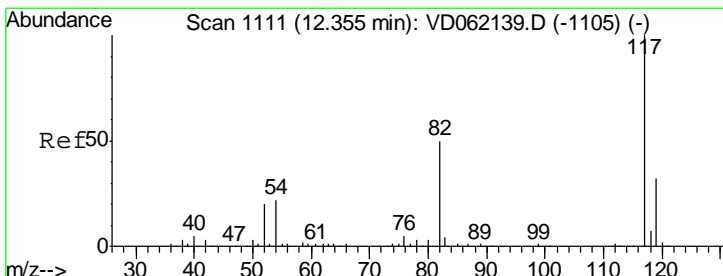
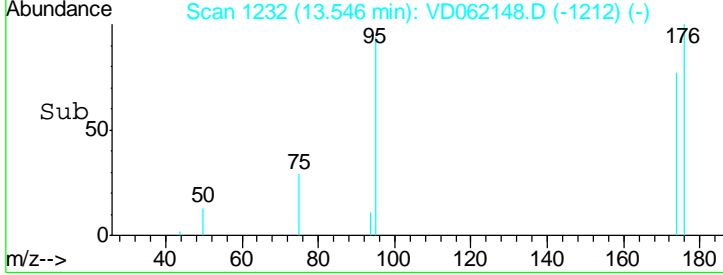
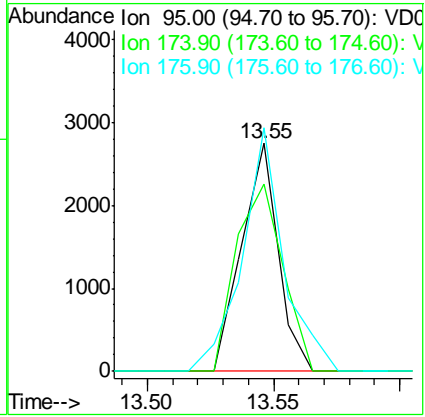
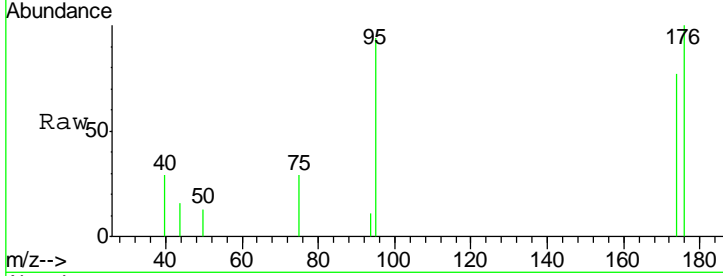




#62
 4-Bromofluorobenzene
 Concen: 44.539 ug/l
 RT: 13.55 min Scan# 1232
 Delta R.T. 0.00 min
 Lab File: VD062148.D
 Acq: 7 May 2019 23:29

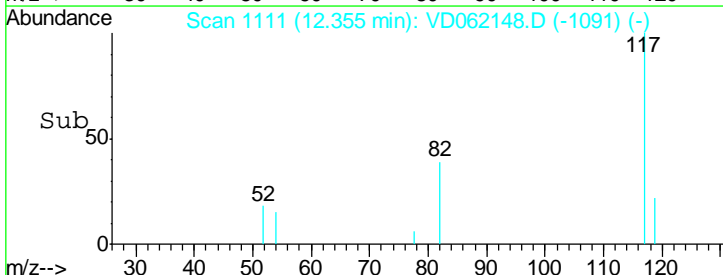
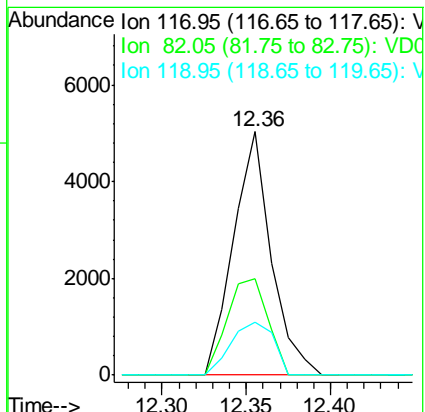
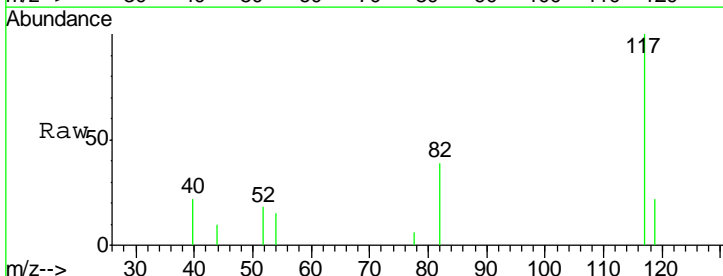
Instrument : MSVOA_D
 ClientSampled : SB-11-1.5-2.0

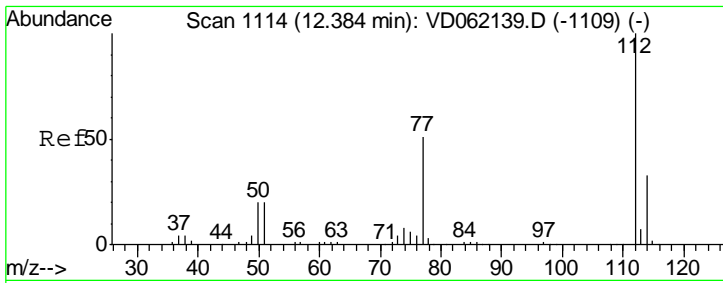
Tgt Ion	Resp	Lower	Upper
95	2745		
174	82.2	0.0	181.8
176	106.8	0.0	174.4



#63
 Chlorobenzene-d5
 Concen: 50.000 ug/l
 RT: 12.36 min Scan# 1111
 Delta R.T. 0.00 min
 Lab File: VD062148.D
 Acq: 7 May 2019 23:29

Tgt Ion	Resp	Lower	Upper
117	7815		
82	39.4	36.2	54.2
119	21.7	26.2	39.4#

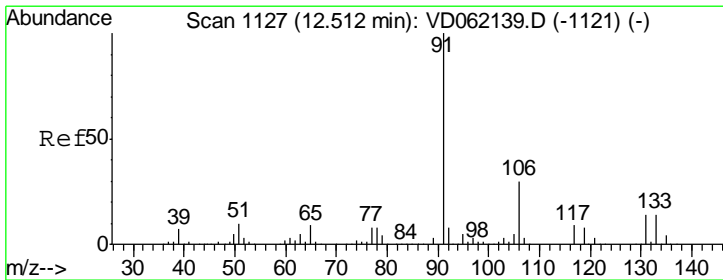
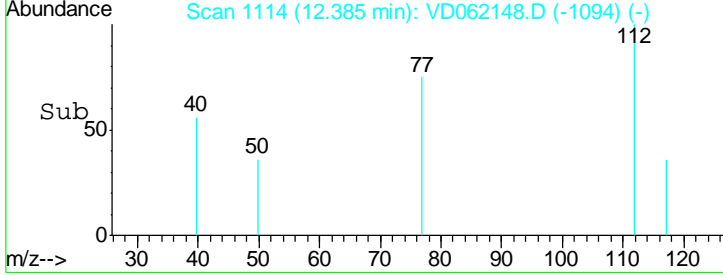
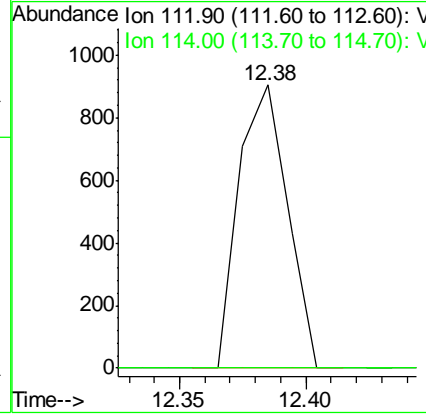
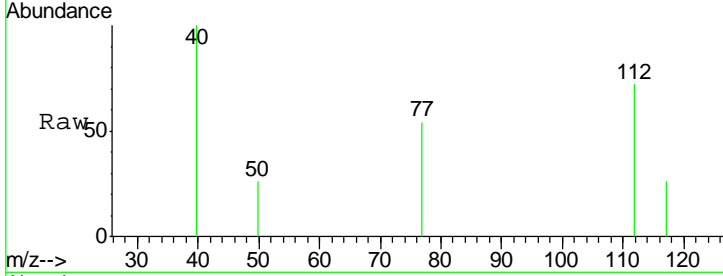




#65
 Chlorobenzene
 Concen: 8.292 ug/l
 RT: 12.38 min Scan# 1114
 Delta R.T. 0.00 min
 Lab File: VD062148.D
 Acq: 7 May 2019 23:29

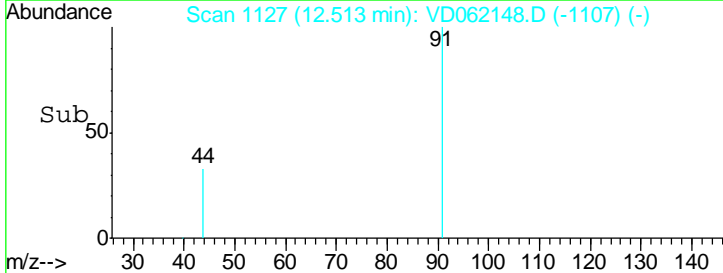
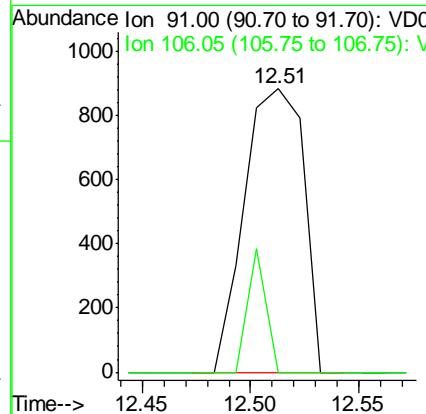
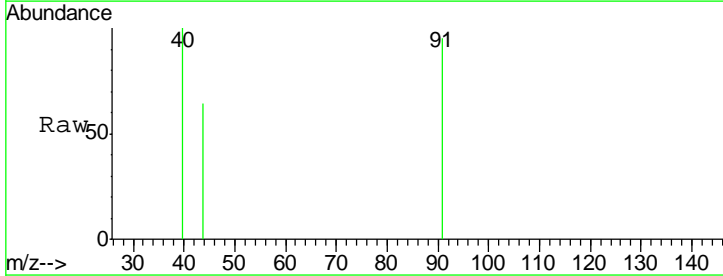
Instrument : MSVOA_D
 ClientSampled : SB-11-1.5-2.0

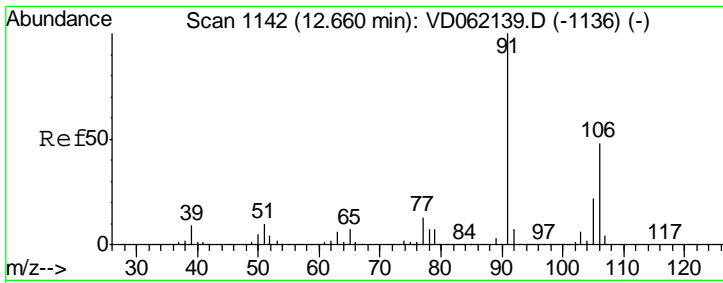
Tgt Ion: 112 Resp: 1207
 Ion Ratio Lower Upper
 112 100
 114 0.0 25.8 38.8#



#67
 Ethyl Benzene
 Concen: 6.861 ug/l
 RT: 12.51 min Scan# 1127
 Delta R.T. 0.00 min
 Lab File: VD062148.D
 Acq: 7 May 2019 23:29

Tgt Ion: 91 Resp: 1672
 Ion Ratio Lower Upper
 91 100
 106 0.0 24.7 37.1#

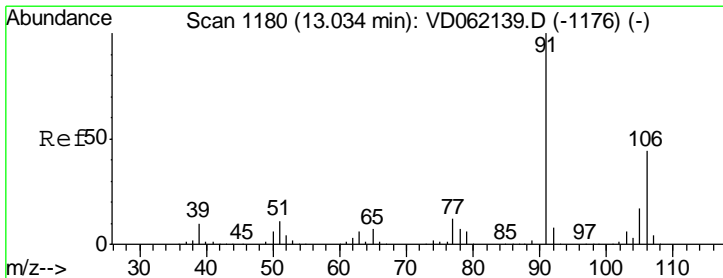
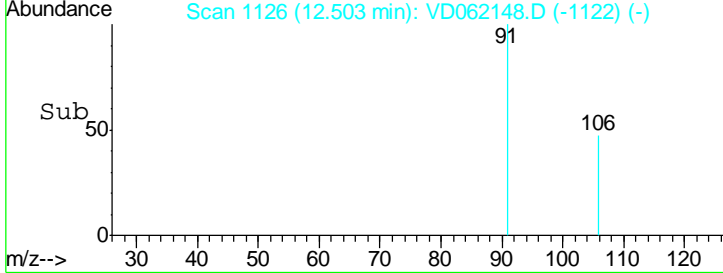
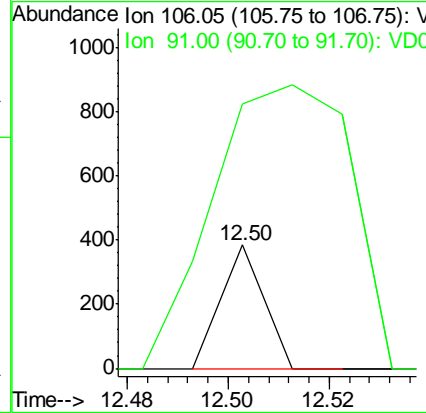
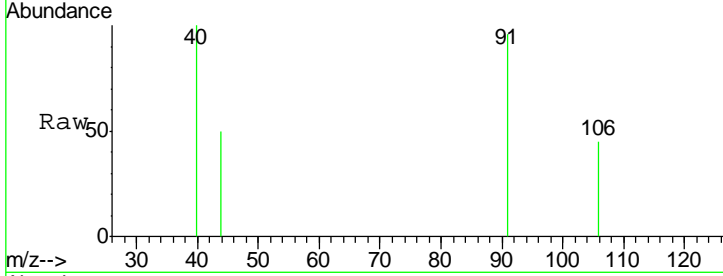




#68
 m/p-Xylenes
 Concen: 2.560 ug/l
 RT: 12.50 min Scan# 1126
 Delta R.T. -0.16 min
 Lab File: VD062148.D
 Acq: 7 May 2019 23:29

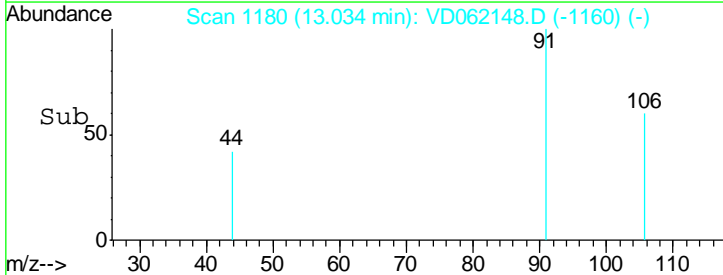
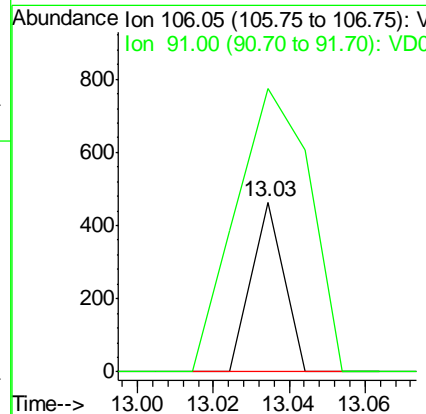
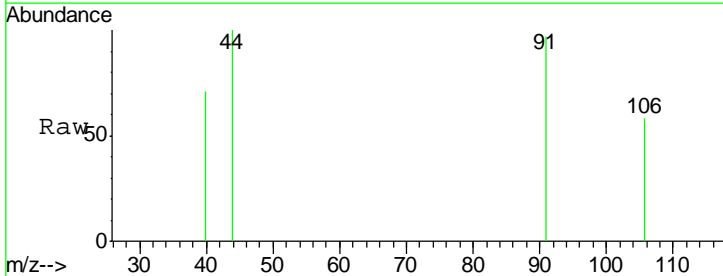
Instrument :
 MSVOA_D
 ClientSampled :
 SB-11-1.5-2.0

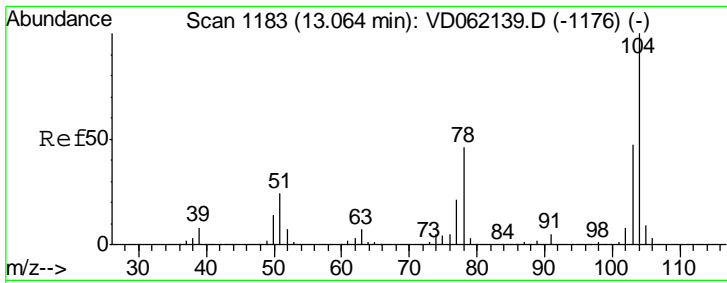
Tgt Ion:106 Resp: 227
 Ion Ratio Lower Upper
 106 100
 91 214.0 164.0 246.0



#69
 o-Xylene
 Concen: 3.312 ug/l
 RT: 13.03 min Scan# 1180
 Delta R.T. 0.00 min
 Lab File: VD062148.D
 Acq: 7 May 2019 23:29

Tgt Ion:106 Resp: 273
 Ion Ratio Lower Upper
 106 100
 91 167.0 106.7 319.9

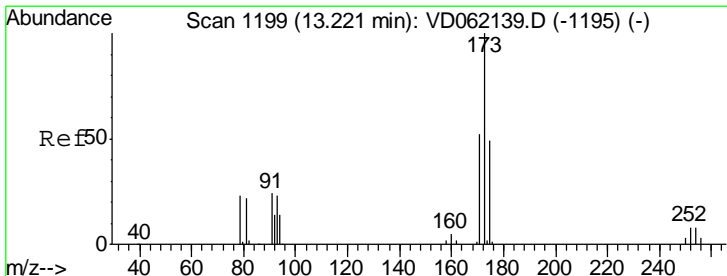
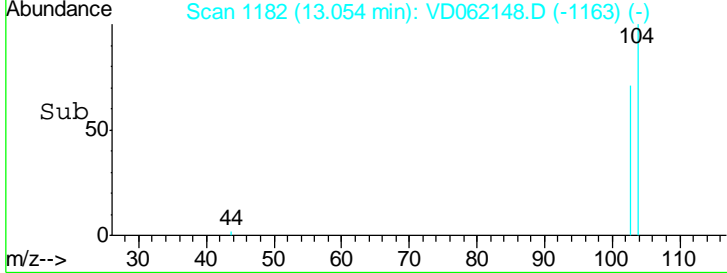
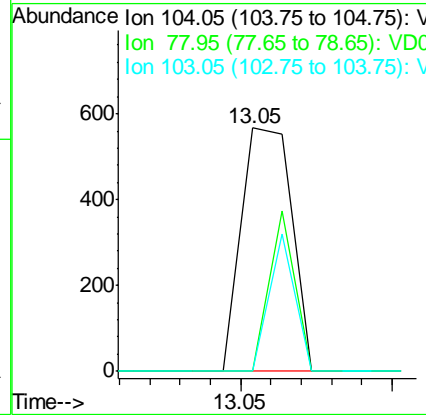
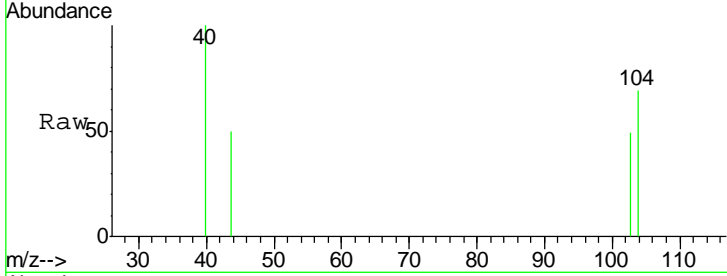




#70
 Styrene
 Concen: 4.741 ug/l
 RT: 13.05 min Scan# 1182
 Delta R.T. -0.01 min
 Lab File: VD062148.D
 Acq: 7 May 2019 23:29

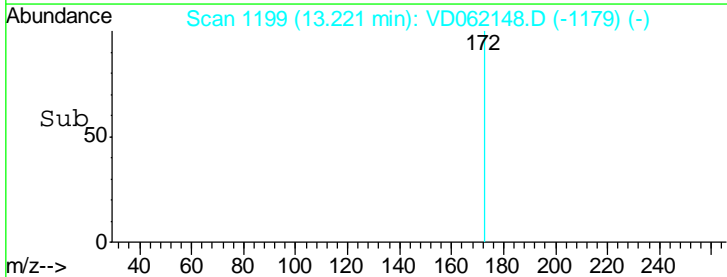
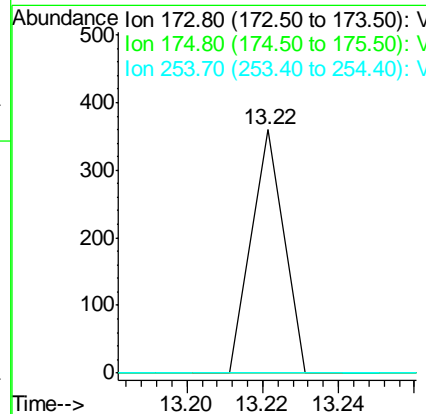
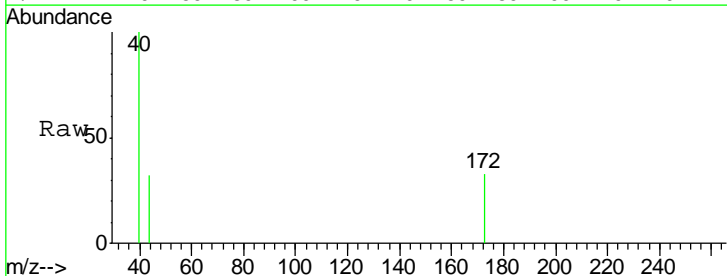
Instrument : MSVOA_D
 ClientSampled : SB-11-1.5-2.0

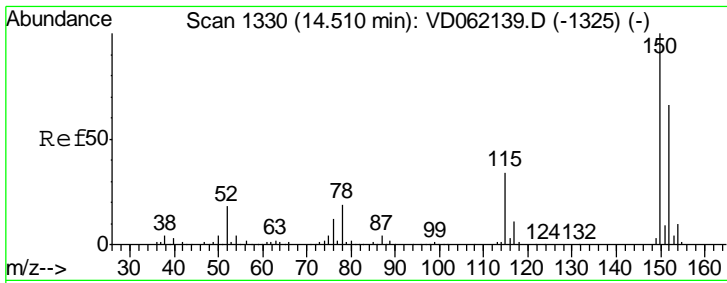
Tgt Ion	Resp	Lower	Upper
104	100		
78	0.0	35.4	53.2#
103	0.0	37.5	56.3#



#71
 Bromoform
 Concen: 4.833 ug/l
 RT: 13.22 min Scan# 1199
 Delta R.T. 0.00 min
 Lab File: VD062148.D
 Acq: 7 May 2019 23:29

Tgt Ion	Resp	Lower	Upper
173	100		
175	0.0	24.4	73.4#
254	0.0	5.4	8.2#

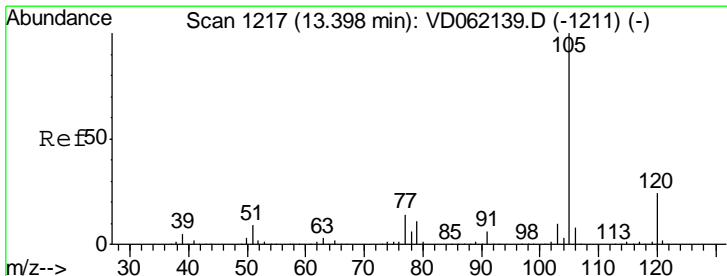
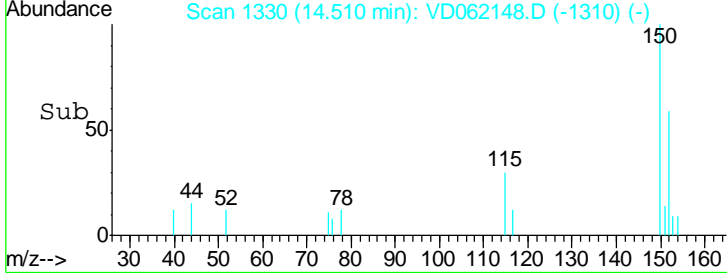
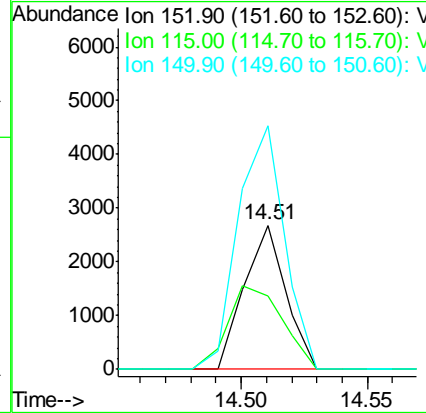
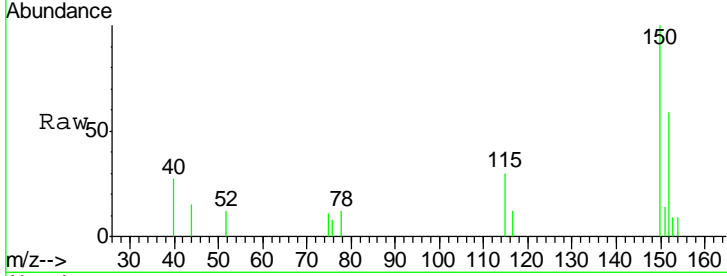




#72
 1,4-Dichlorobenzene-d4
 Concen: 50.000 ug/l
 RT: 14.51 min Scan# 1330
 Delta R.T. 0.00 min
 Lab File: VD062148.D
 Acq: 7 May 2019 23:29

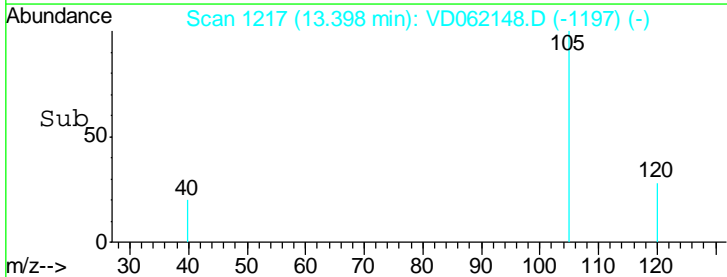
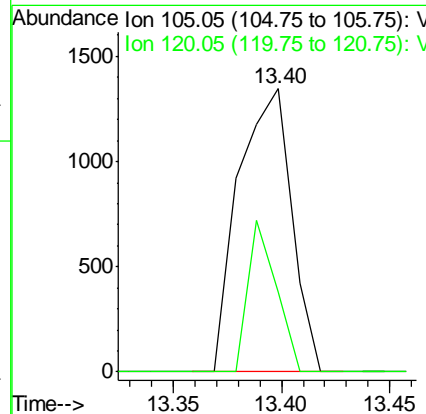
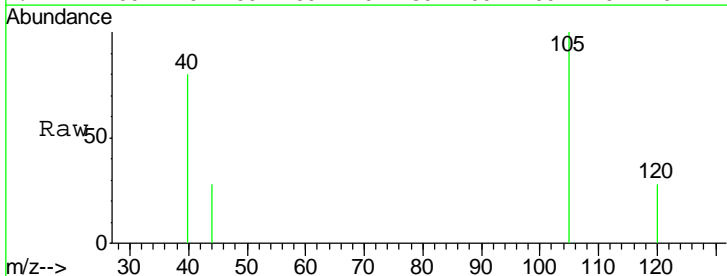
Instrument :
 MSVOA_D
 ClientSampled :
 SB-11-1.5-2.0

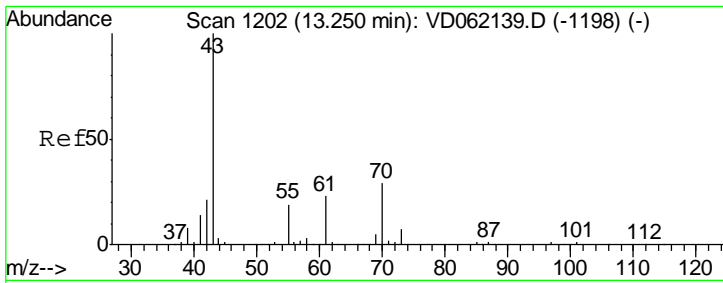
Tgt Ion	Resp	Lower	Upper
152	100		
115	50.7	30.9	92.7
150	169.2	0.0	314.8



#73
 Isopropylbenzene
 Concen: 12.474 ug/l
 RT: 13.40 min Scan# 1217
 Delta R.T. 0.00 min
 Lab File: VD062148.D
 Acq: 7 May 2019 23:29

Tgt Ion	Resp	Lower	Upper
105	100		
120	28.2	12.0	36.1

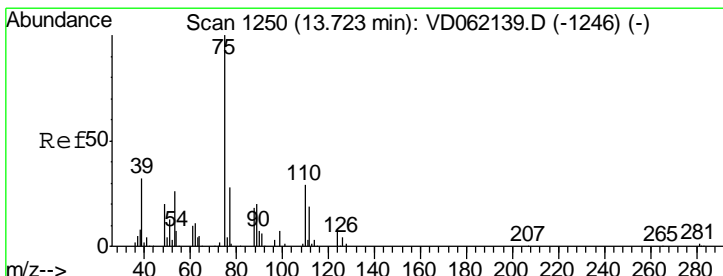
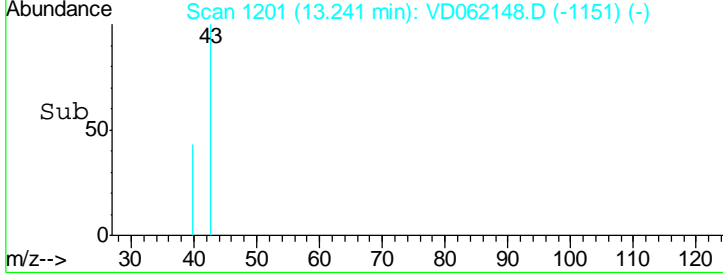
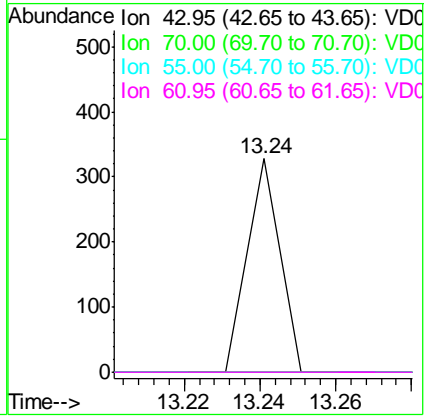
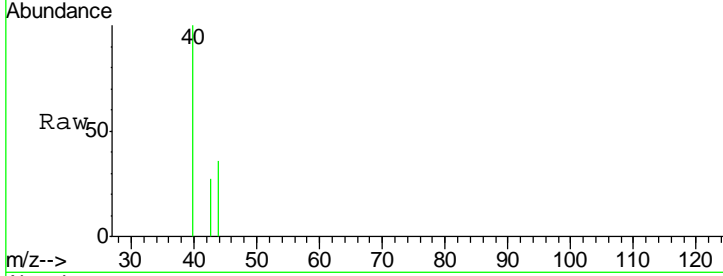




#74
 N-amyl acetate
 Concen: 4.045 ug/l
 RT: 13.24 min Scan# 1201
 Delta R.T. -0.01 min
 Lab File: VD062148.D
 Acq: 7 May 2019 23:29

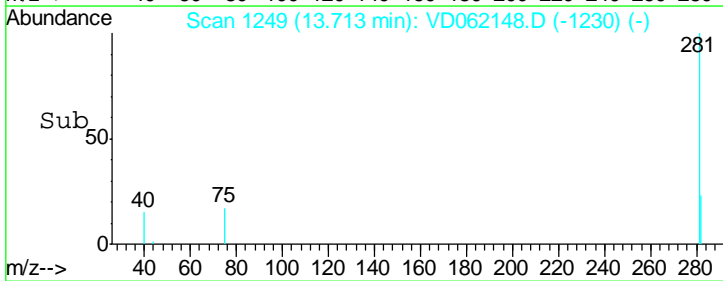
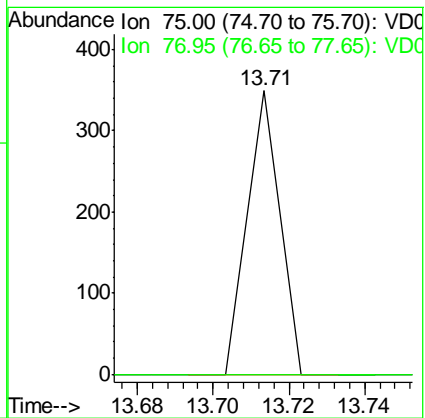
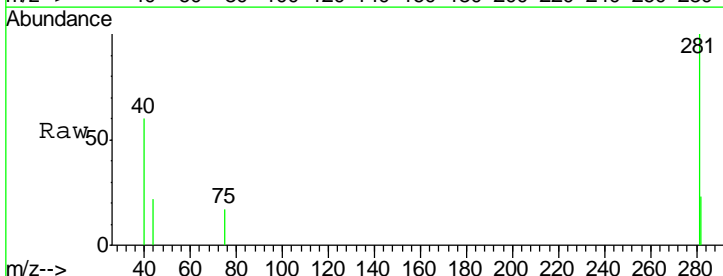
Instrument : MSVOA_D
 ClientSampleId : SB-11-1.5-2.0

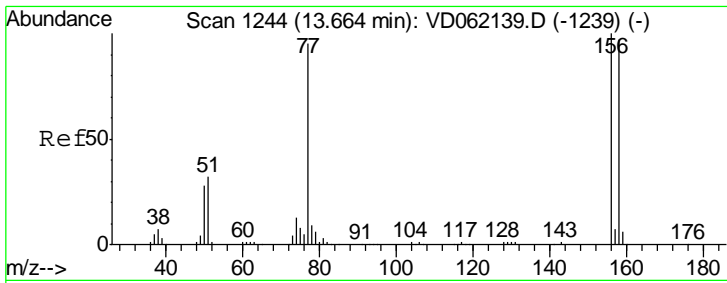
Tgt Ion	Resp	Lower	Upper
43	100		
70	0.0	24.2	36.4#
55	0.0	16.0	24.0#
61	0.0	21.6	32.4#



#76
 1,2,3-Trichloropropane
 Concen: 5.680 ug/l
 RT: 13.71 min Scan# 1249
 Delta R.T. -0.01 min
 Lab File: VD062148.D
 Acq: 7 May 2019 23:29

Tgt Ion	Resp	Lower	Upper
75	100		
77	0.0	16.4	49.4#

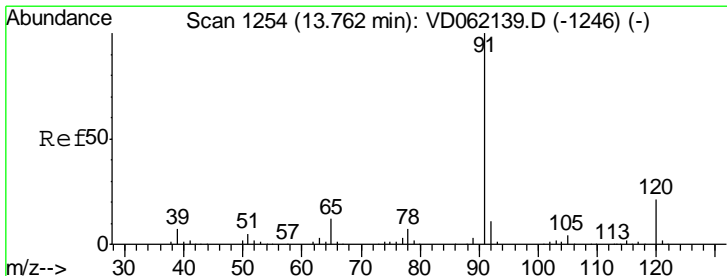
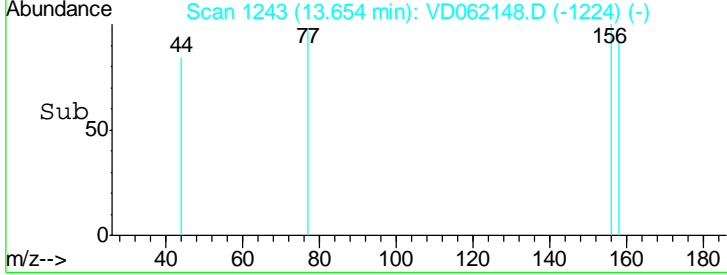
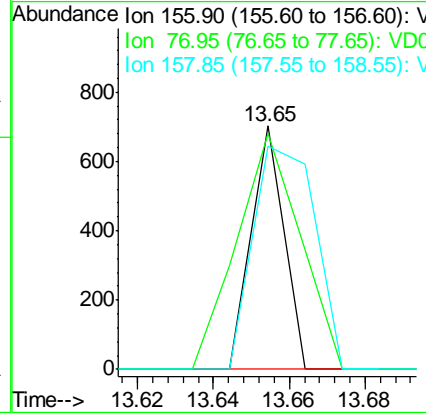
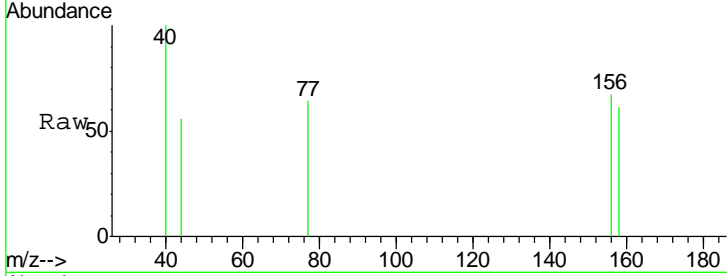




#77
 Bromobenzene
 Concen: 8.103 ug/l
 RT: 13.65 min Scan# 1243
 Delta R.T. -0.01 min
 Lab File: VD062148.D
 Acq: 7 May 2019 23:29

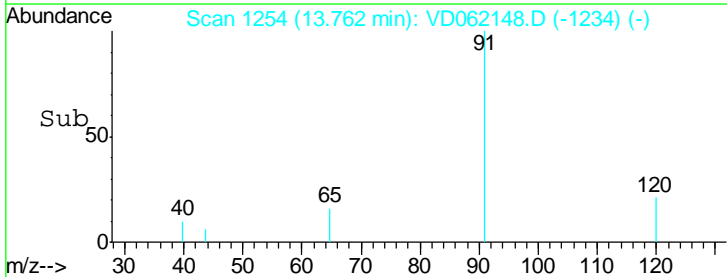
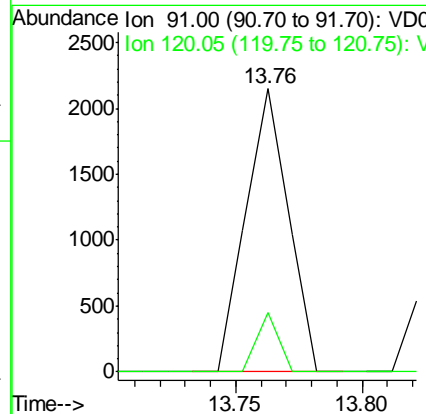
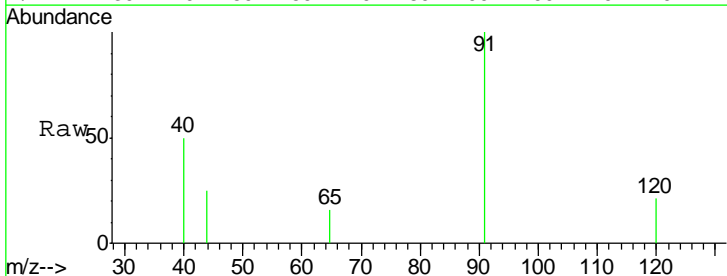
Instrument :
 MSVOA_D
 ClientSampled :
 SB-11-1.5-2.0

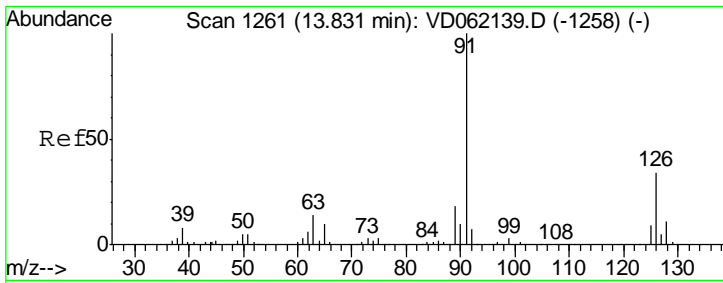
Tgt Ion	Resp	Lower	Upper
156	415		
77	96.7	53.1	159.4
158	91.9	49.4	148.0



#78
 n-propylbenzene
 Concen: 11.524 ug/l
 RT: 13.76 min Scan# 1254
 Delta R.T. 0.00 min
 Lab File: VD062148.D
 Acq: 7 May 2019 23:29

Tgt Ion	Resp	Lower	Upper
91	2515		
120	21.0	11.1	33.1

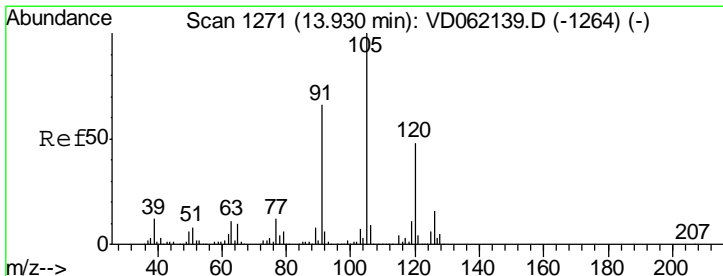
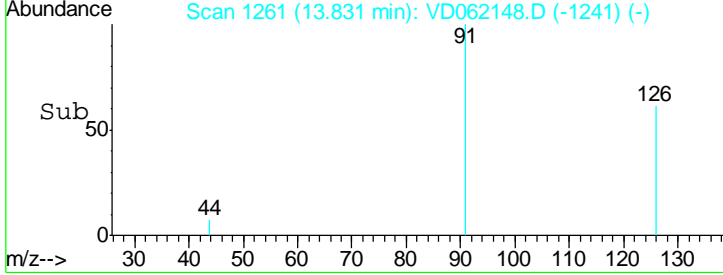
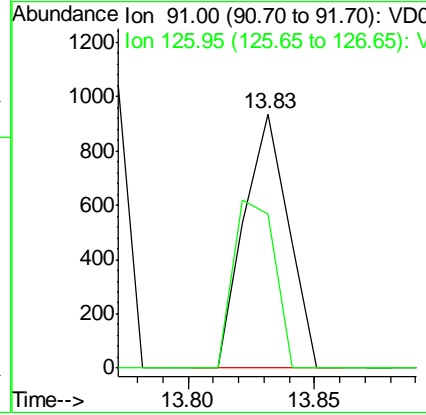
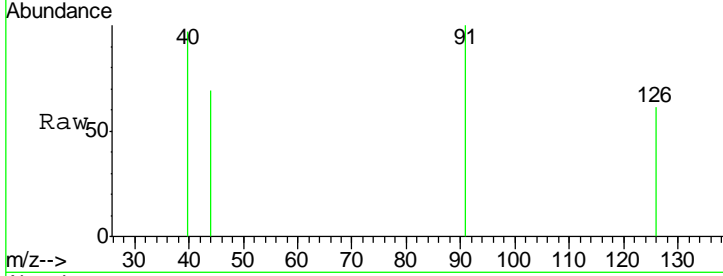




#79
 2-Chlorotoluene
 Concen: 9.129 ug/l
 RT: 13.83 min Scan# 1261
 Delta R.T. 0.00 min
 Lab File: VD062148.D
 Acq: 7 May 2019 23:29

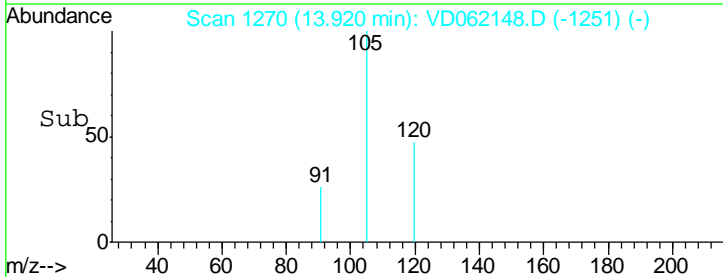
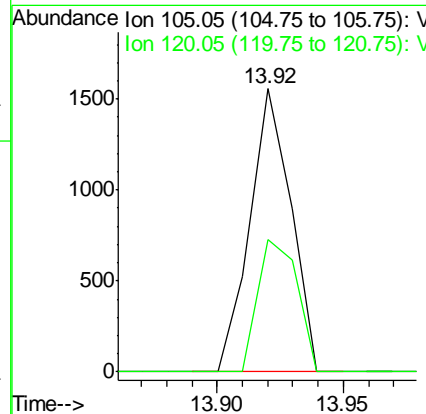
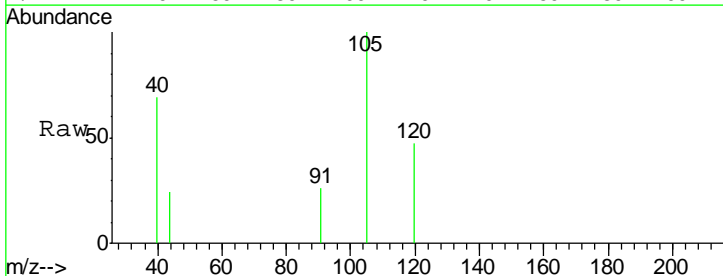
Instrument : MSVOA_D
 ClientSampled : SB-11-1.5-2.0

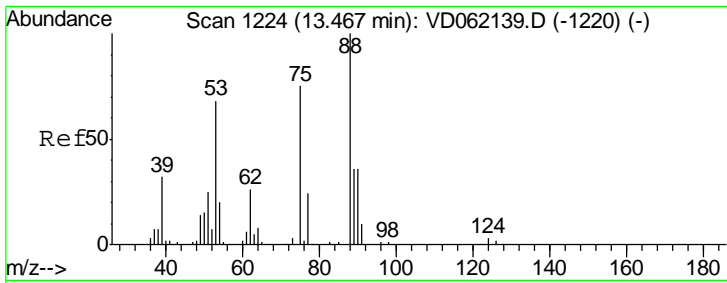
Tgt Ion: 91 Resp: 1141
 Ion Ratio Lower Upper
 91 100
 126 60.6 18.6 55.8#



#80
 1,3,5-Trimethylbenzene
 Concen: 11.385 ug/l
 RT: 13.92 min Scan# 1270
 Delta R.T. -0.01 min
 Lab File: VD062148.D
 Acq: 7 May 2019 23:29

Tgt Ion: 105 Resp: 1754
 Ion Ratio Lower Upper
 105 100
 120 46.8 24.0 72.0

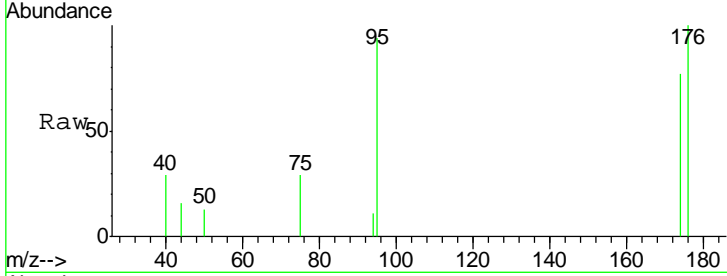




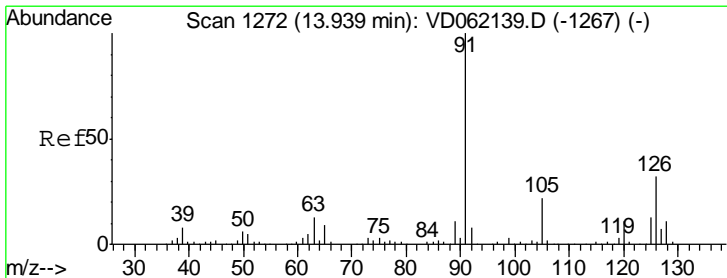
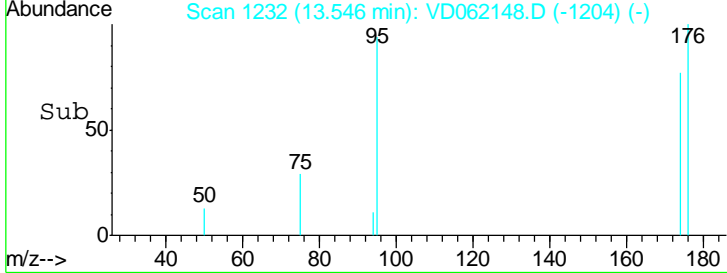
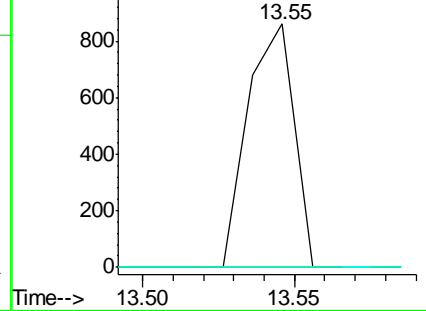
#81
 trans-1,4-Dichloro-2-butene
 Concen: 88.775 ug/l
 RT: 13.55 min Scan# 1232
 Delta R.T. 0.08 min
 Lab File: VD062148.D
 Acq: 7 May 2019 23:29

Instrument :
 MSVOA_D
 ClientSampleId :
 SB-11-1.5-2.0

Tgt Ion	Resp	Lower	Upper
75	100		
53	0.0	65.8	98.8#
89	0.0	35.0	52.6#

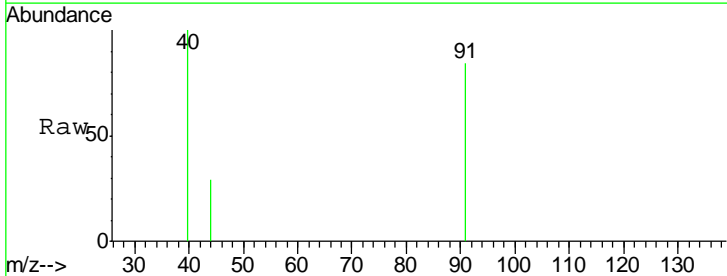


Abundance Ion 75.00 (74.70 to 75.70): VDC
 Ion 53.00 (52.70 to 53.70): VDC
 Ion 89.00 (88.70 to 89.70): VDC

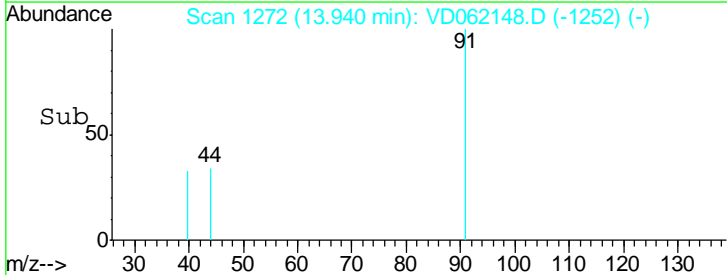
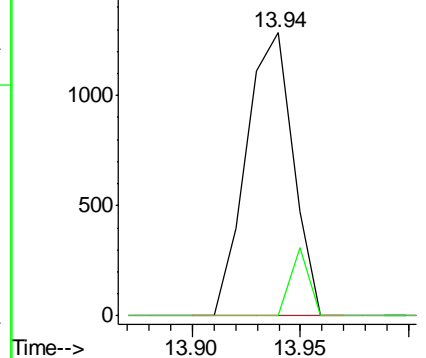


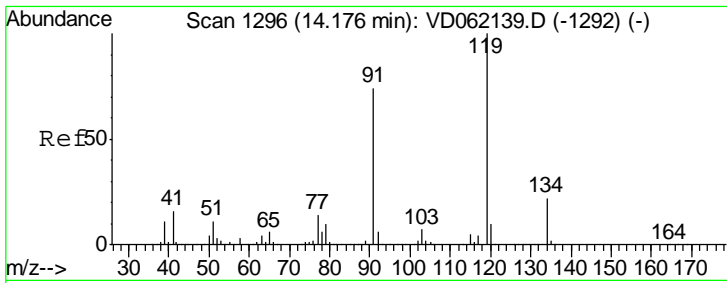
#82
 4-Chlorotoluene
 Concen: 13.109 ug/l
 RT: 13.94 min Scan# 1272
 Delta R.T. 0.00 min
 Lab File: VD062148.D
 Acq: 7 May 2019 23:29

Tgt Ion	Resp	Lower	Upper
91	100		
126	0.0	19.1	57.5#



Abundance Ion 91.00 (90.70 to 91.70): VDC
 Ion 125.95 (125.65 to 126.65): V

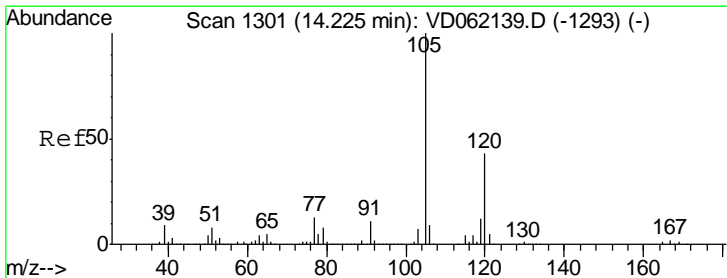
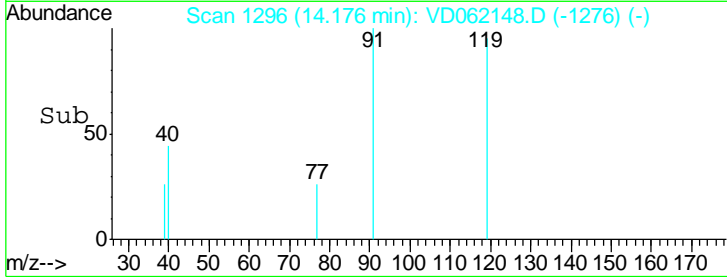
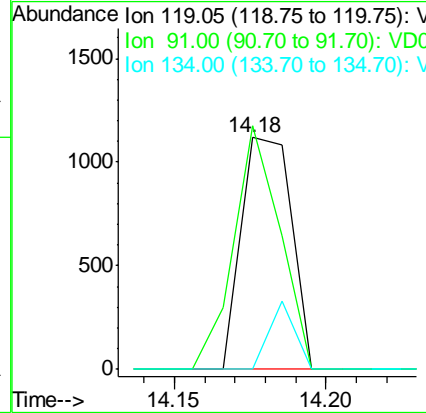
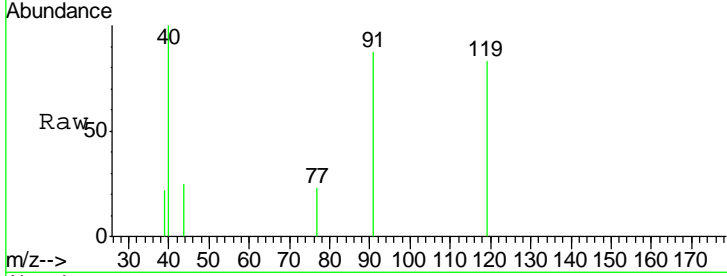




#83
 tert-Butylbenzene
 Concen: 7.502 ug/l
 RT: 14.18 min Scan# 1296
 Delta R.T. 0.00 min
 Lab File: VD062148.D
 Acq: 7 May 2019 23:29

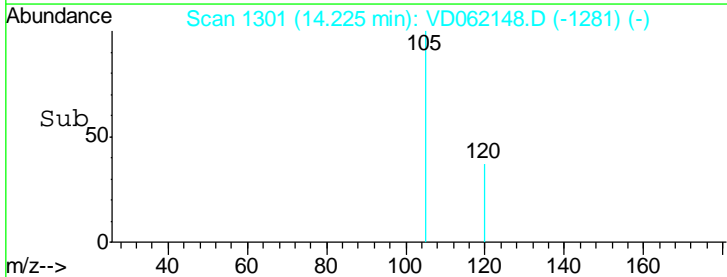
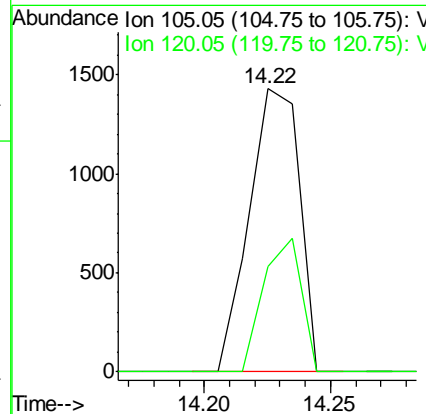
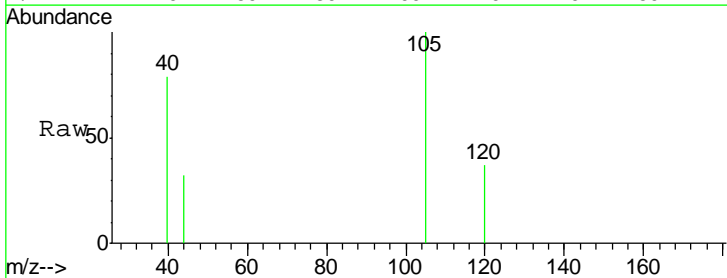
Instrument :
 MSVOA_D
 ClientSampled :
 SB-11-1.5-2.0

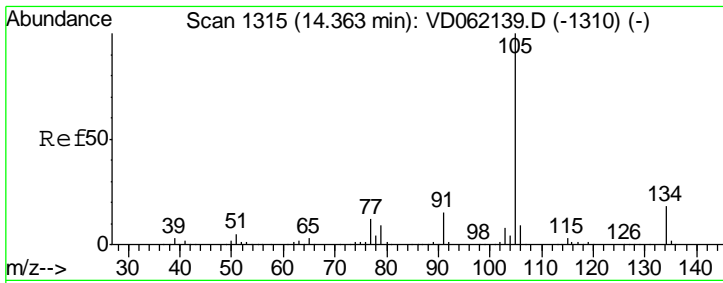
Tgt Ion	Resp	Lower	Upper
119	100		
91	105.0	34.2	102.6#
134	0.0	12.0	36.0#



#84
 1,2,4-Trimethylbenzene
 Concen: 12.814 ug/l
 RT: 14.22 min Scan# 1301
 Delta R.T. 0.00 min
 Lab File: VD062148.D
 Acq: 7 May 2019 23:29

Tgt Ion	Resp	Lower	Upper
105	100		
120	37.5	23.1	69.2

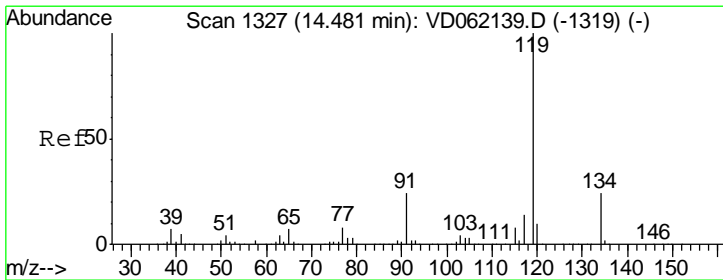
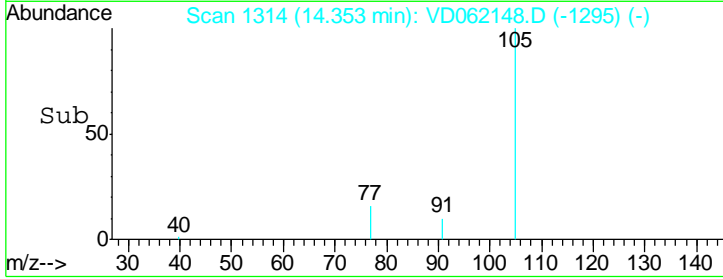
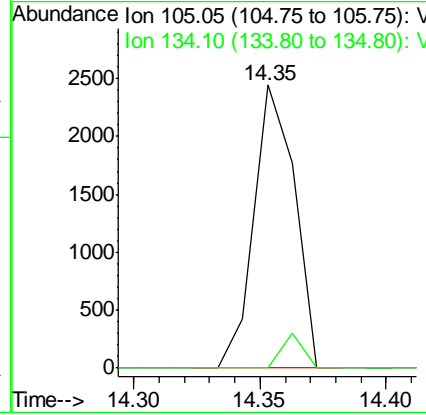
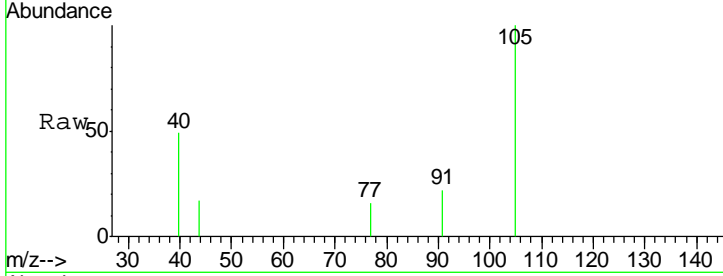




#85
 sec-Butylbenzene
 Concen: 14.406 ug/l
 RT: 14.35 min Scan# 1314
 Delta R.T. -0.01 min
 Lab File: VD062148.D
 Acq: 7 May 2019 23:29

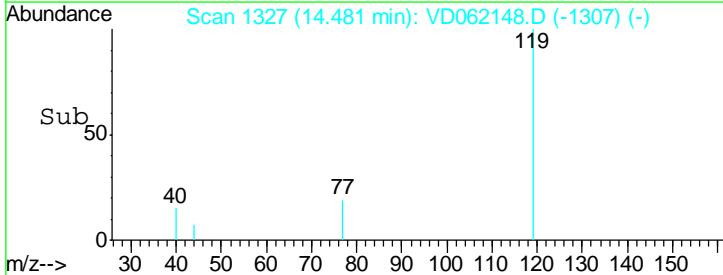
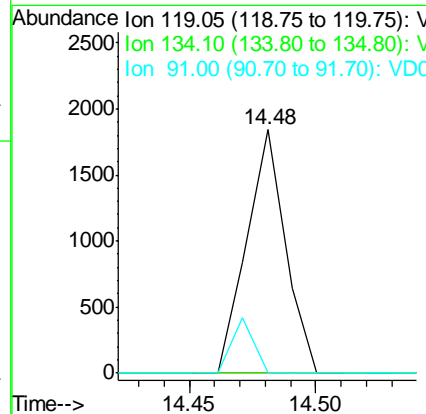
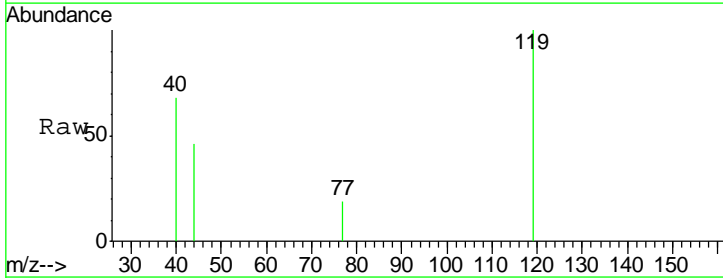
Instrument : MSVOA_D
 ClientSampleID : SB-11-1.5-2.0

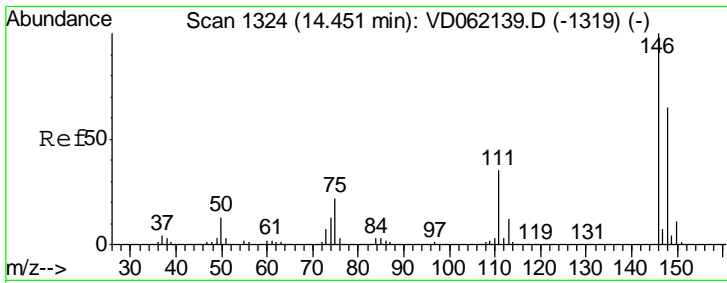
Tgt Ion	Resp	Lower	Upper
105	100		
134	0.0	8.9	26.7#



#86
 p-Isopropyltoluene
 Concen: 11.549 ug/l
 RT: 14.48 min Scan# 1327
 Delta R.T. 0.00 min
 Lab File: VD062148.D
 Acq: 7 May 2019 23:29

Tgt Ion	Resp	Lower	Upper
119	100		
134	0.0	12.8	38.3#
91	0.0	10.7	32.1#

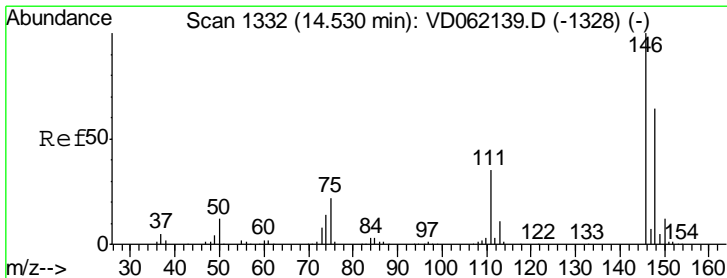
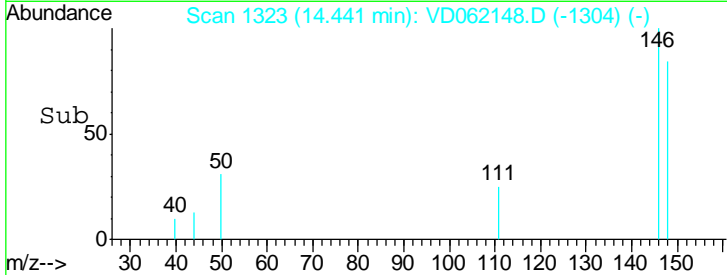
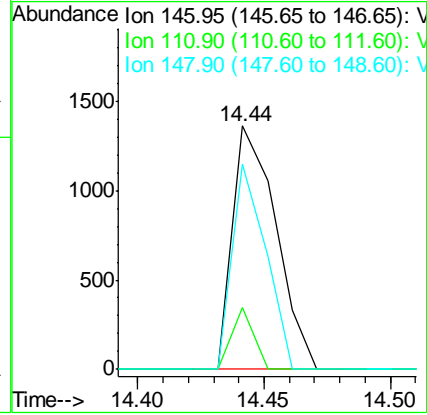
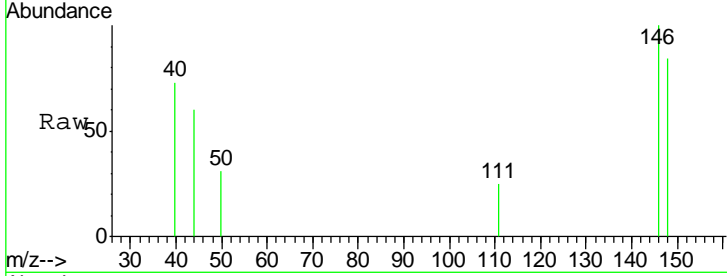




#87
 1,3-Dichlorobenzene
 Concen: 17.359 ug/l
 RT: 14.44 min Scan# 1323
 Delta R.T. -0.01 min
 Lab File: VD062148.D
 Acq: 7 May 2019 23:29

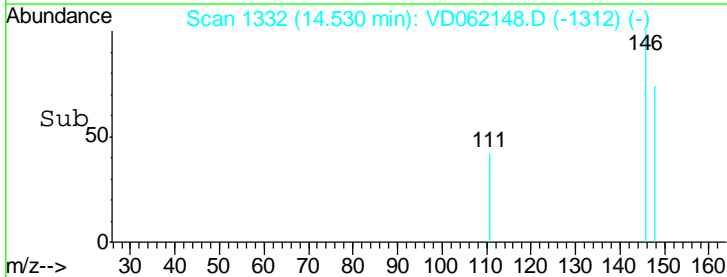
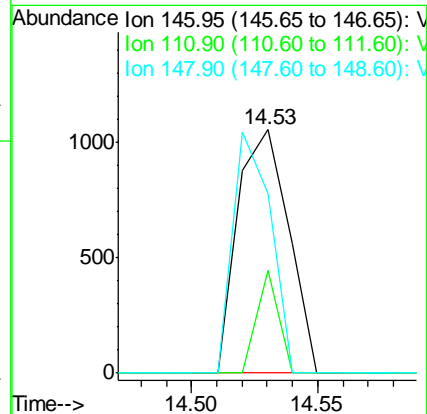
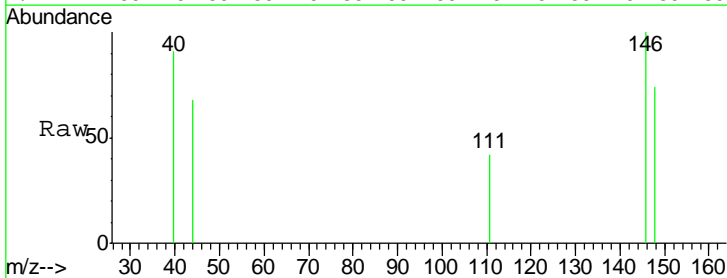
Instrument : MSVOA_D
 ClientSampled : SB-11-1.5-2.0

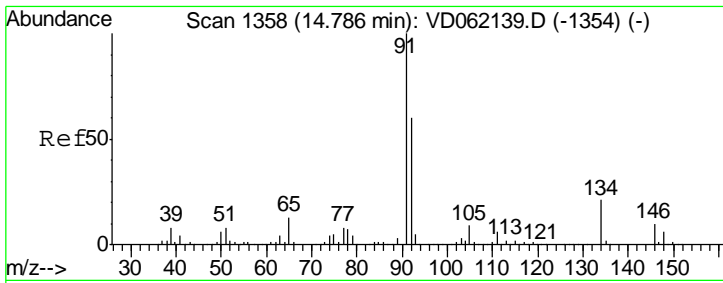
Tgt Ion	Resp	Lower	Upper
146	1624		
111	25.2	20.0	60.0
148	84.2	31.8	95.4



#88
 1,4-Dichlorobenzene
 Concen: 16.013 ug/l
 RT: 14.53 min Scan# 1332
 Delta R.T. 0.00 min
 Lab File: VD062148.D
 Acq: 7 May 2019 23:29

Tgt Ion	Resp	Lower	Upper
146	1472		
111	42.5	20.2	60.5
148	73.6	32.0	96.2

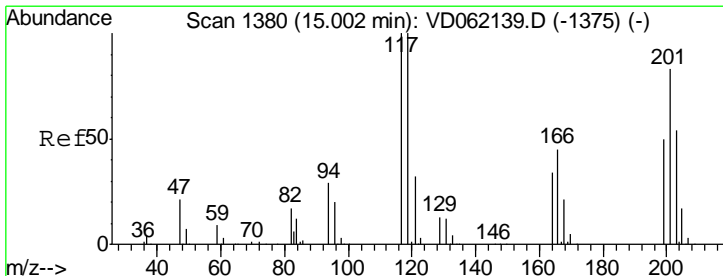
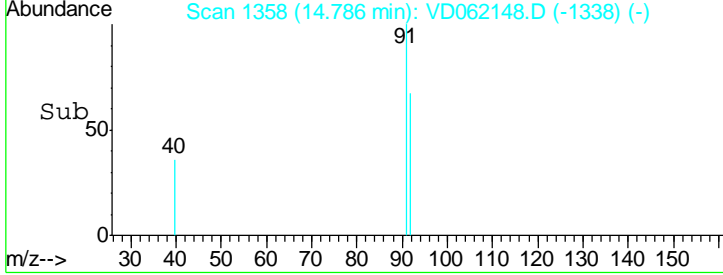
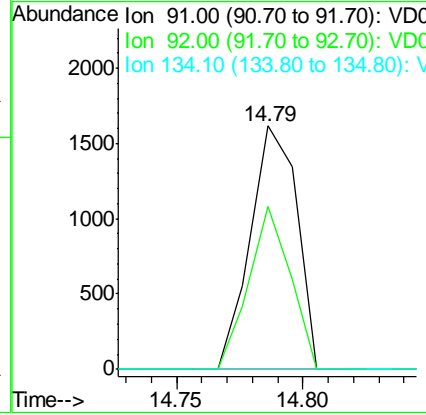
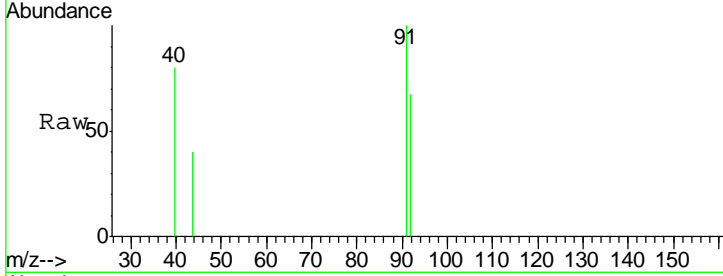




#89
 n-Butylbenzene
 Concen: 13.662 ug/l
 RT: 14.79 min Scan# 1358
 Delta R.T. 0.00 min
 Lab File: VD062148.D
 Acq: 7 May 2019 23:29

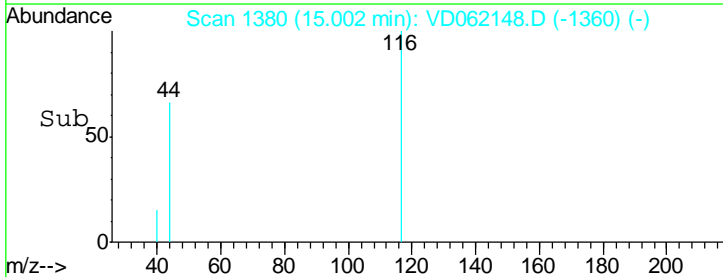
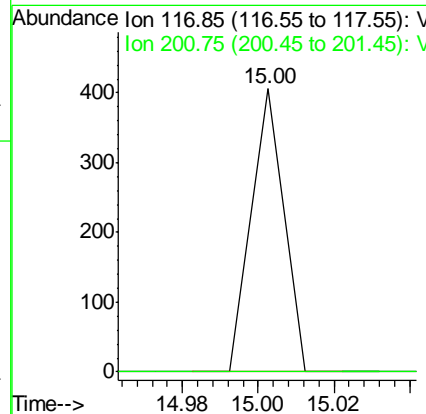
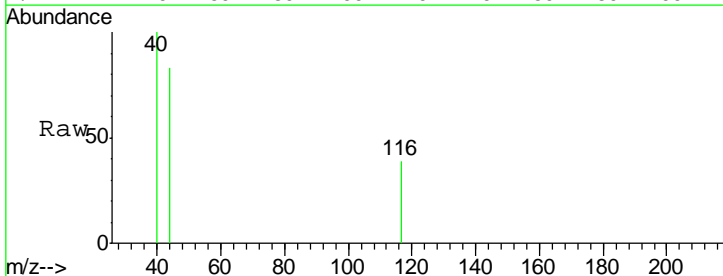
Instrument : MSVOA_D
 ClientSampled : SB-11-1.5-2.0

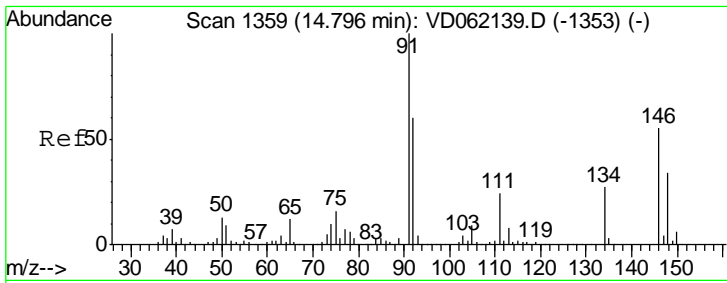
Tgt Ion	Resp	Lower	Upper
91	100		
92	67.0	30.3	91.0
134	0.0	14.5	43.6#



#90
 Hexachloroethane
 Concen: 5.203 ug/l
 RT: 15.00 min Scan# 1380
 Delta R.T. 0.00 min
 Lab File: VD062148.D
 Acq: 7 May 2019 23:29

Tgt Ion	Resp	Lower	Upper
117	100		
201	0.0	30.2	90.6#



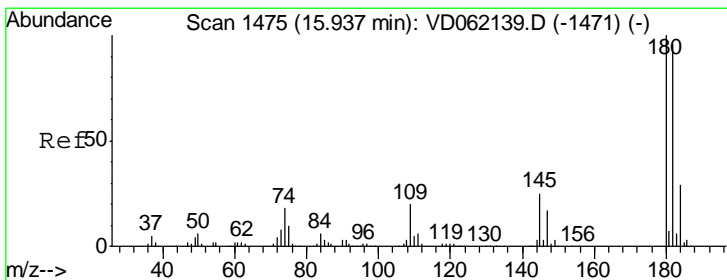
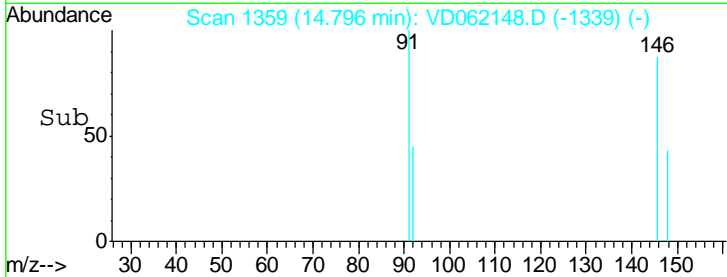
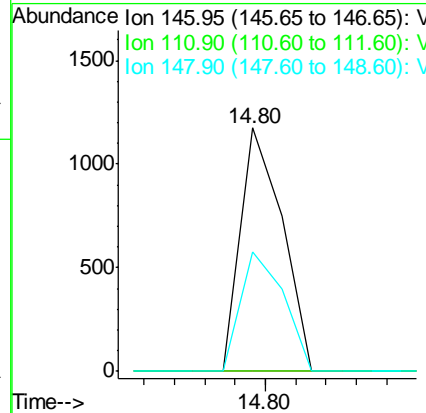
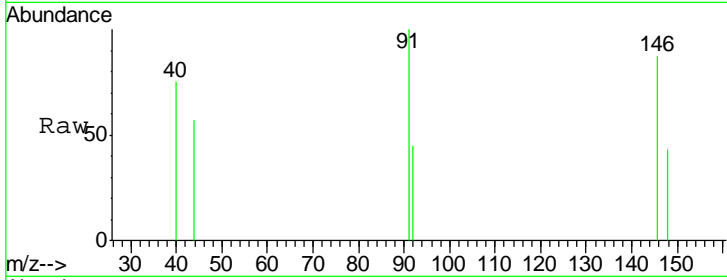


#91
 1,2-Dichlorobenzene
 Concen: 14.731 ug/l
 RT: 14.80 min Scan# 1359
 Delta R.T. 0.00 min
 Lab File: VD062148.D
 Acq: 7 May 2019 23:29

Instrument :
 MSVOA_D
 ClientSampled :
 SB-11-1.5-2.0

Tgt Ion:146 Resp: 1135

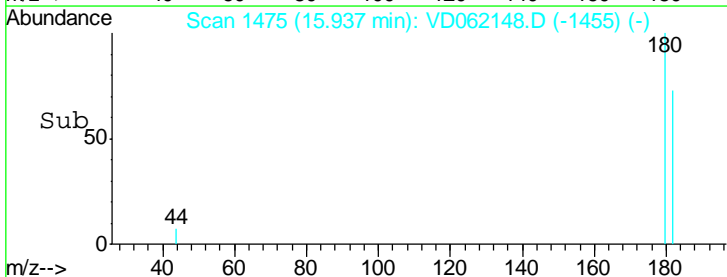
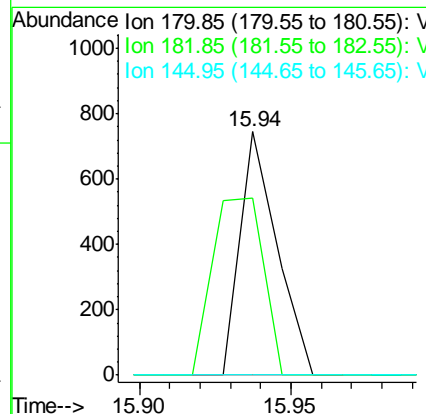
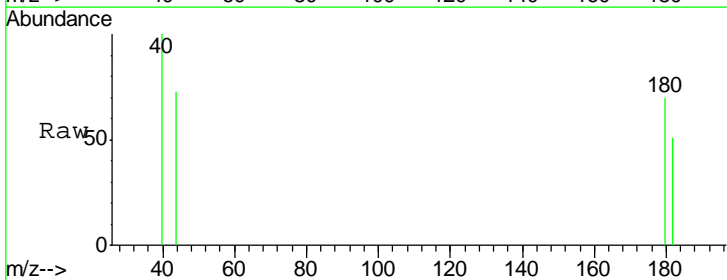
Ion	Ratio	Lower	Upper
146	100		
111	0.0	20.0	59.9#
148	48.9	32.3	96.8

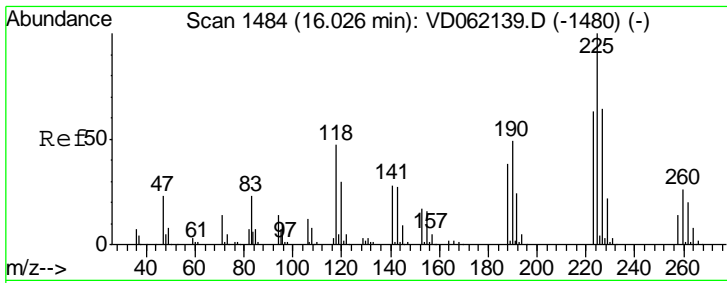


#93
 1,2,4-Trichlorobenzene
 Concen: 11.270 ug/l
 RT: 15.94 min Scan# 1475
 Delta R.T. 0.00 min
 Lab File: VD062148.D
 Acq: 7 May 2019 23:29

Tgt Ion:180 Resp: 632

Ion	Ratio	Lower	Upper
180	100		
182	72.9	49.3	147.8
145	0.0	16.2	48.6#

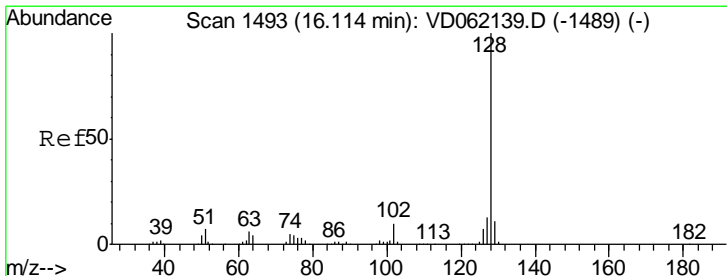
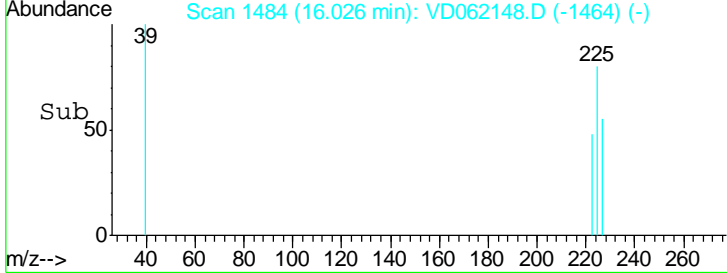
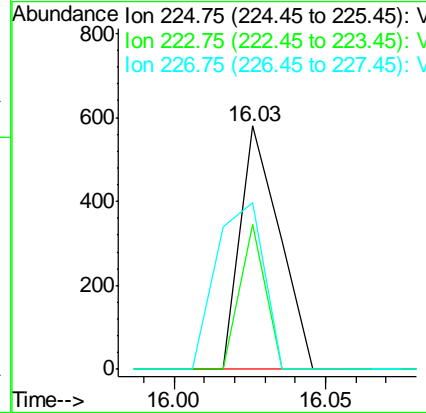
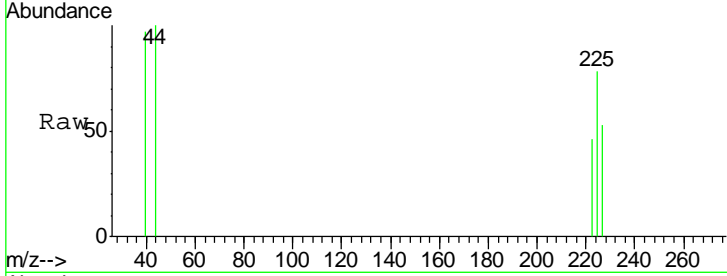




#94
 Hexachlorobutadiene
 Concen: 12.539 ug/l
 RT: 16.03 min Scan# 1484
 Delta R.T. 0.00 min
 Lab File: VD062148.D
 Acq: 7 May 2019 23:29

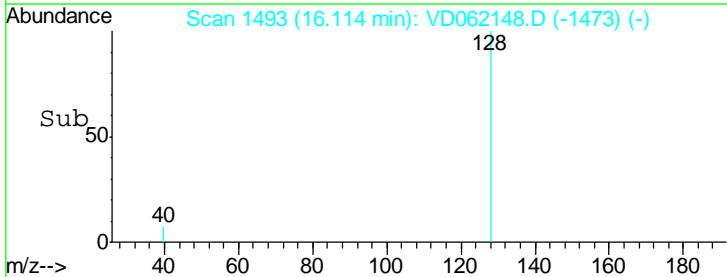
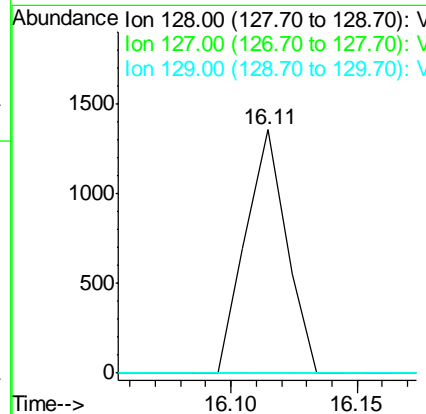
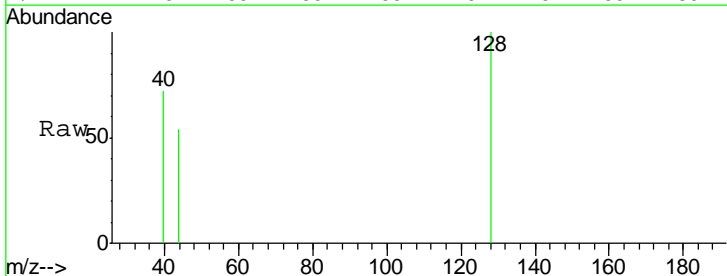
Instrument :
 MSVOA_D
 ClientSampled :
 SB-11-1.5-2.0

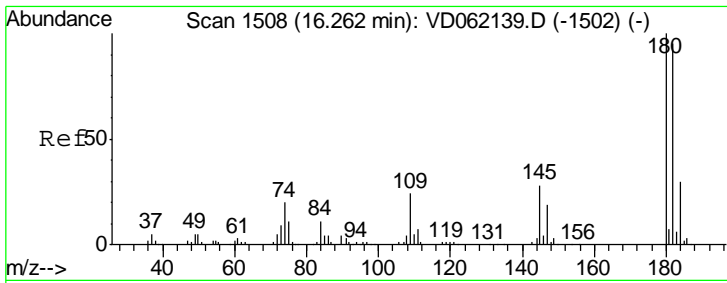
Tgt Ion	Resp	Lower	Upper
225	523		
223	59.5	30.6	92.0
227	68.4	32.0	96.2



#95
 Naphthalene
 Concen: 19.682 ug/l
 RT: 16.11 min Scan# 1493
 Delta R.T. 0.00 min
 Lab File: VD062148.D
 Acq: 7 May 2019 23:29

Tgt Ion	Resp	Lower	Upper
128	1541		
127	0.0	9.8	14.8#
129	0.0	8.8	13.2#

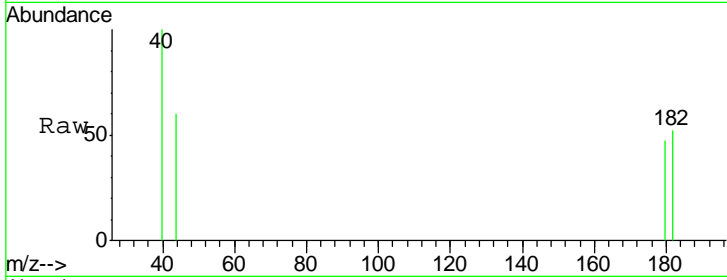




#96
 1,2,3-Trichlorobenzene
 Concen: 14.577 ug/l
 RT: 16.26 min Scan# 1508
 Delta R.T. 0.00 min
 Lab File: VD062148.D
 Acq: 7 May 2019 23:29

Instrument :
 MSVOA_D
 ClientSampled :
 SB-11-1.5-2.0

Tot Ion	Ion	Resp	Lower	Upper
514	180	100		
141.0	182	110.5	47.0	141.0
51.0#	145	0.0	17.0	51.0#



Abundance Ion 179.85 (179.55 to 180.55): V
 Ion 181.85 (181.55 to 182.55): V
 Ion 144.95 (144.65 to 145.65): V

