

Data Path : Z:\voasrv\HPCHEM1\MSVOA_D\Data\VD050922\
 Data File : VD072890.D
 Acq On : 09 May 2022 15:00
 Operator : VA/SY
 Sample : N2689-01RE
 Misc : 5.10G/5.00ml/MSVOA_D/SOIL
 ALS Vial : 9 Sample Multiplier: 1

Instrument :
 MSVOA_D
 ClientSampleId :
 OK-01-050422RE

Quant Time: May 09 16:12:30 2022
 Quant Method : Z:\voasrv\HPCHEM1\MSVOA_D\Method\82D050222S.M
 Quant Title : SW846 8260
 QLast Update : Tue May 03 08:33:49 2022
 Response via : Initial Calibration

Compound	R.T.	QIon	Response	Conc	Units	Dev(Min)

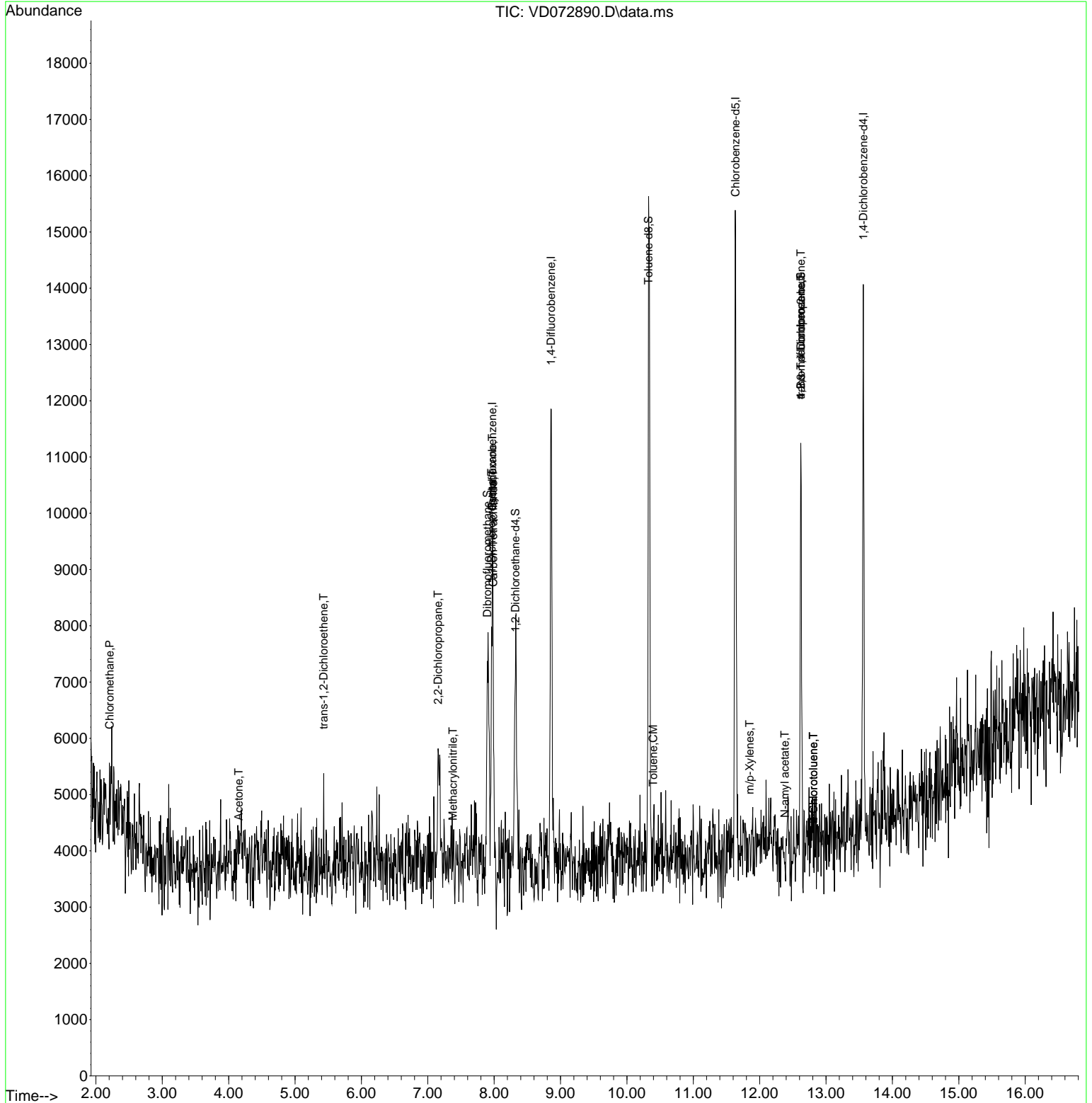
Internal Standards						
1) Pentafluorobenzene	7.973	168	4054	50.000	ug/l	# 0.00
34) 1,4-Difluorobenzene	8.855	114	7233	50.000	ug/l	0.00
63) Chlorobenzene-d5	11.638	117	6694	50.000	ug/l	# 0.00
72) 1,4-Dichlorobenzene-d4	13.561	152	2563	50.000	ug/l	0.00
System Monitoring Compounds						
33) 1,2-Dichloroethane-d4	8.320	65	3304	62.785	ug/l	0.00
Spiked Amount	50.000	Range 50 - 163	Recovery	=	125.560%	
35) Dibromofluoromethane	7.897	113	3436	67.640	ug/l	-0.01
Spiked Amount	50.000	Range 54 - 147	Recovery	=	135.280%	
50) Toluene-d8	10.326	98	8137	44.655	ug/l	0.00
Spiked Amount	50.000	Range 49 - 140	Recovery	=	89.320%	
62) 4-Bromofluorobenzene	12.620	95	2880	42.388	ug/l	0.00
Spiked Amount	50.000	Range 25 - 144	Recovery	=	84.780%	
Target Compounds						
						Qvalue
3) Chloromethane	2.209	50	154	2.643	ug/l	# 40
16) Acetone	4.150	43	571	46.629	ug/l	# 47
21) trans-1,2-Dichloroethene	5.432	96	62	1.106	ug/l	# 1
26) 2,2-Dichloropropane	7.156	77	89	1.009	ug/l	# 54
31) Cyclohexane	7.973	56	114	1.239	ug/l	# 19
36) 1,1-Dichloropropene	7.961	75	209	2.530	ug/l	# 43
38) Carbon Tetrachloride	7.985	117	317	3.697	ug/l	# 13
41) Methacrylonitrile	7.379	41	60	2.654	ug/l	# 27
52) Toluene	10.397	92	249	1.673	ug/l	# 1
68) m/p-Xylenes	11.849	106	134	1.298	ug/l	88
74) N-amyl acetate	12.379	43	72	1.450	ug/l	# 45
76) 1,2,3-Trichloropropane	12.620	75	1285	44.963	ug/l	# 100
79) 2-Chlorotoluene	12.808	91	181	1.233	ug/l	# 42
81) trans-1,4-Dichloro-2-b...	12.620	75	1285	103.396	ug/l	# 7
82) 4-Chlorotoluene	12.808	91	181	1.180	ug/l	# 42

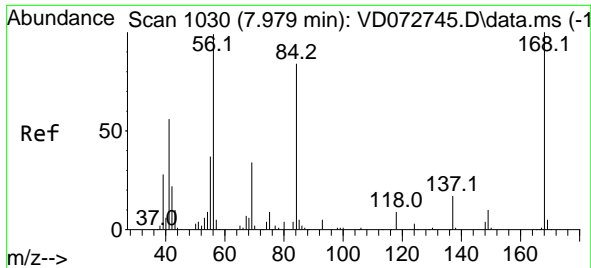
(#) = qualifier out of range (m) = manual integration (+) = signals summed

Data Path : Z:\voasrv\HPCHEM1\MSVOA_D\Data\VD050922\
 Data File : VD072890.D
 Acq On : 09 May 2022 15:00
 Operator : VA/SY
 Sample : N2689-01RE
 Misc : 5.10G/5.00ml/MSVOA_D/SOIL
 ALS Vial : 9 Sample Multiplier: 1

Instrument :
 MSVOA_D
ClientSampleId :
 OK-01-050422RE

Quant Time: May 09 16:12:30 2022
 Quant Method : Z:\voasrv\HPCHEM1\MSVOA_D\Method\82D050222S.M
 Quant Title : SW846 8260
 QLast Update : Tue May 03 08:33:49 2022
 Response via : Initial Calibration

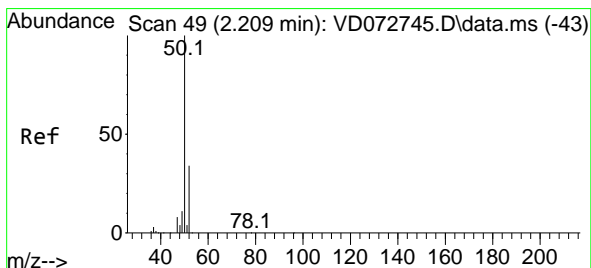
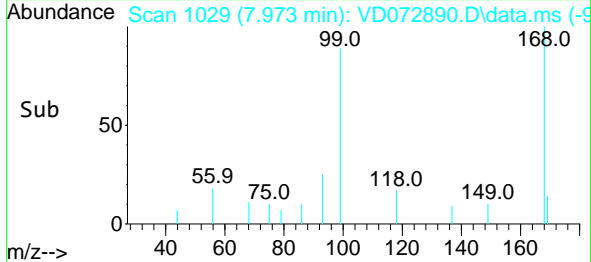
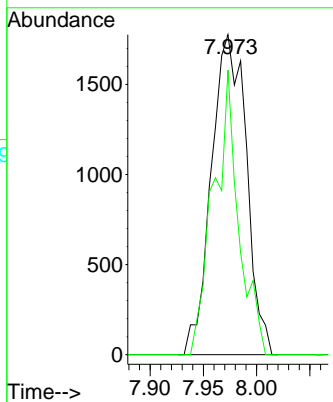
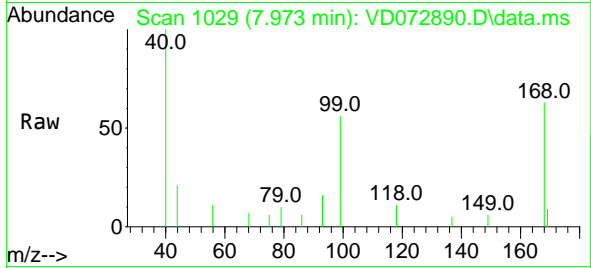




#1
 Pentafluorobenzene
 Concen: 50.000 ug/l
 RT: 7.973 min Scan# 10
 Delta R.T. -0.006 min
 Lab File: VD072890.D
 Acq: 09 May 2022 15:00

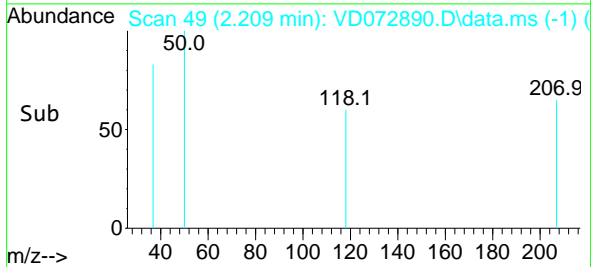
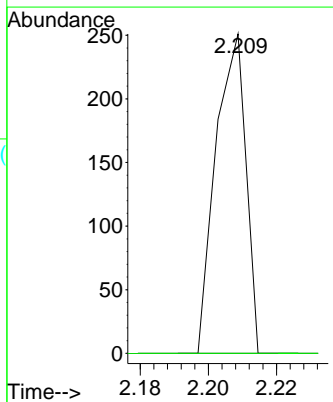
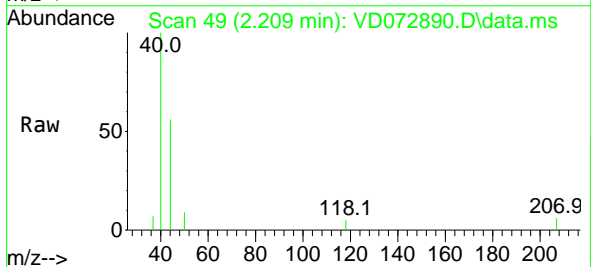
Instrument : MSVOA_D
 ClientSampleId : OK-01-050422RE

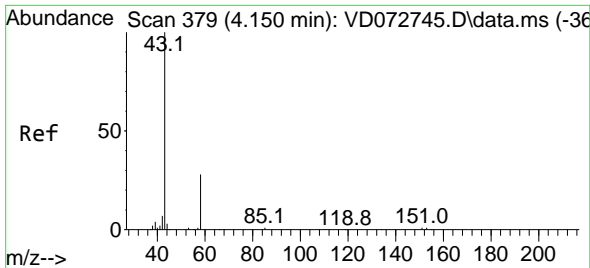
Tgt Ion:168 Resp: 4054
 Ion Ratio Lower Upper
 168 100
 99 89.0 49.8 74.6#



#3
 Chloromethane
 Concen: 2.643 ug/l
 RT: 2.209 min Scan# 49
 Delta R.T. -0.000 min
 Lab File: VD072890.D
 Acq: 09 May 2022 15:00

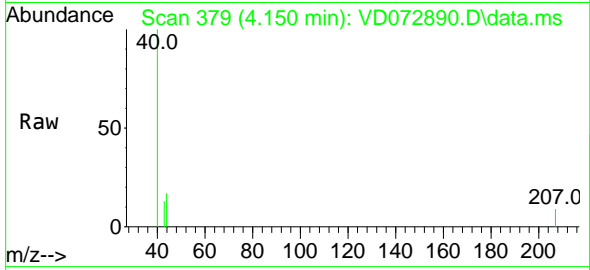
Tgt Ion: 50 Resp: 154
 Ion Ratio Lower Upper
 50 100
 52 0.0 27.4 41.0#



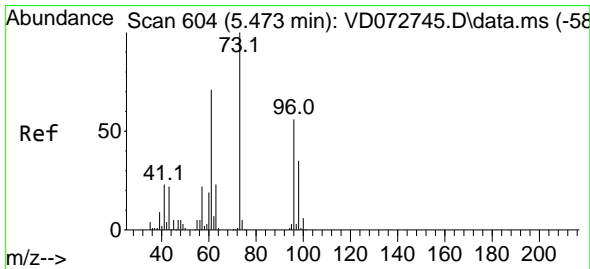
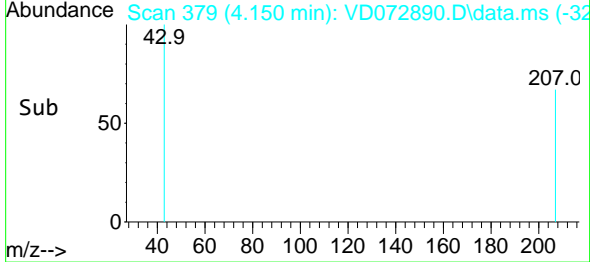
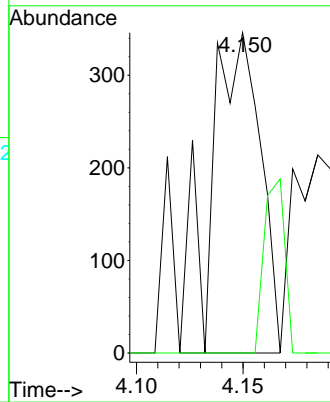


#16
 Acetone
 Concen: 46.629 ug/l
 RT: 4.150 min Scan# 31
 Delta R.T. -0.000 min
 Lab File: VD072890.D
 Acq: 09 May 2022 15:00

Instrument : MSVOA_D
 ClientSampleId : OK-01-050422RE

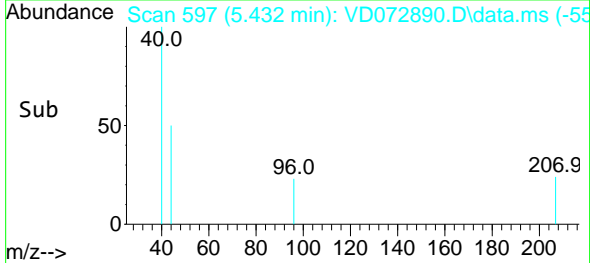
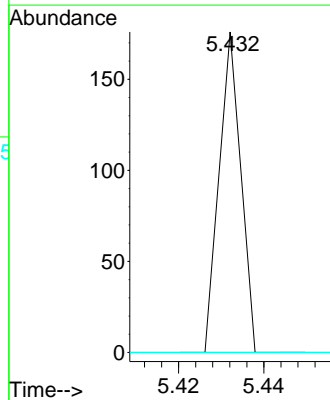
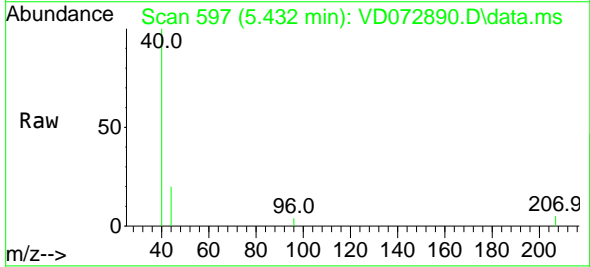


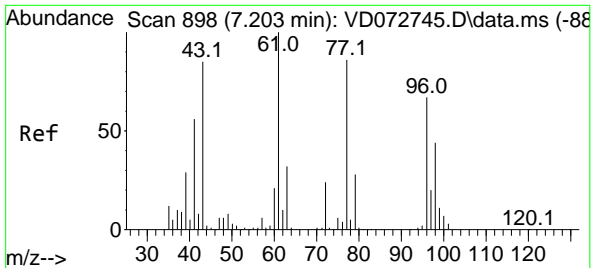
Tgt Ion: 43 Resp: 571
 Ion Ratio Lower Upper
 43 100
 58 0.0 22.1 33.1#



#21
 trans-1,2-Dichloroethene
 Concen: 1.106 ug/l
 RT: 5.432 min Scan# 597
 Delta R.T. -0.041 min
 Lab File: VD072890.D
 Acq: 09 May 2022 15:00

Tgt Ion: 96 Resp: 62
 Ion Ratio Lower Upper
 96 100
 61 0.0 117.9 176.9#
 98 0.0 49.4 74.2#

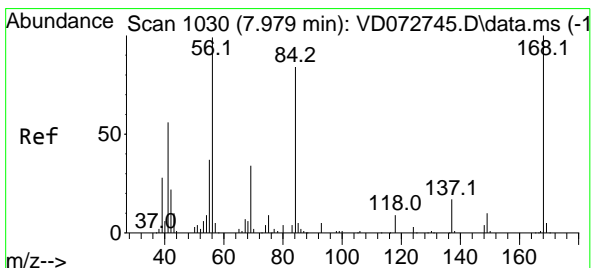
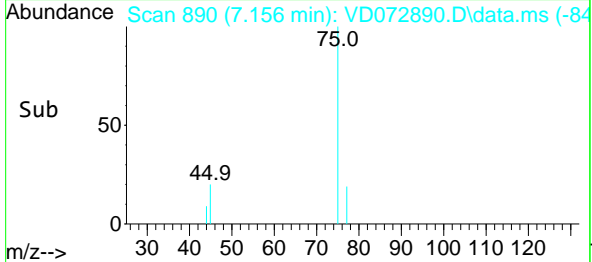
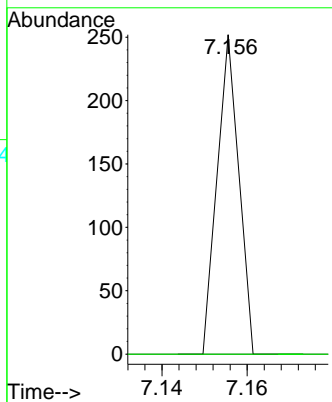
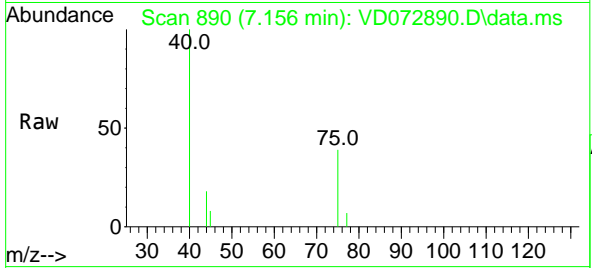




#26
 2,2-Dichloropropane
 Concen: 1.009 ug/l
 RT: 7.156 min Scan# 89
 Delta R.T. -0.048 min
 Lab File: VD072890.D
 Acq: 09 May 2022 15:00

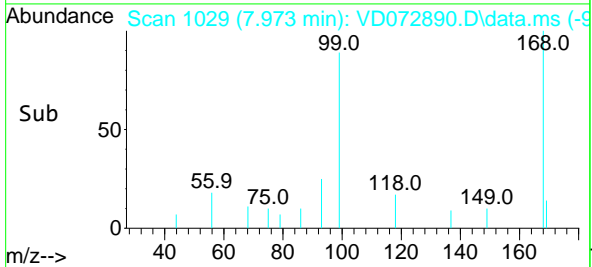
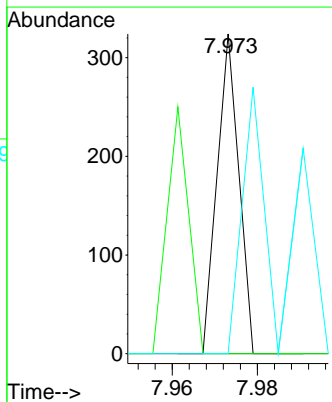
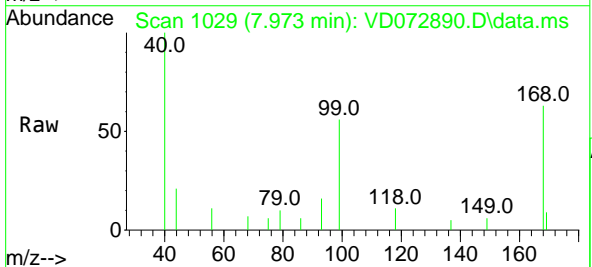
Instrument : MSVOA_D
 ClientSampleId : OK-01-050422RE

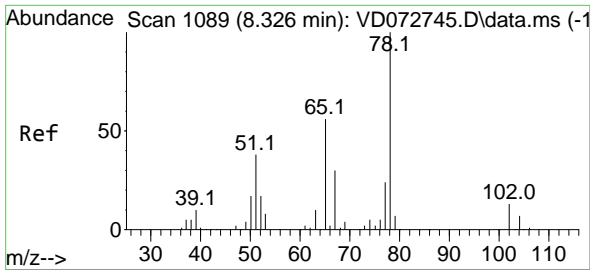
Tgt Ion: 77 Resp: 89
 Ion Ratio Lower Upper
 77 100
 97 0.0 10.8 32.4#



#31
 Cyclohexane
 Concen: 1.239 ug/l
 RT: 7.973 min Scan# 1029
 Delta R.T. -0.006 min
 Lab File: VD072890.D
 Acq: 09 May 2022 15:00

Tgt Ion: 56 Resp: 114
 Ion Ratio Lower Upper
 56 100
 69 0.0 25.4 38.2#
 84 0.0 63.0 94.4#

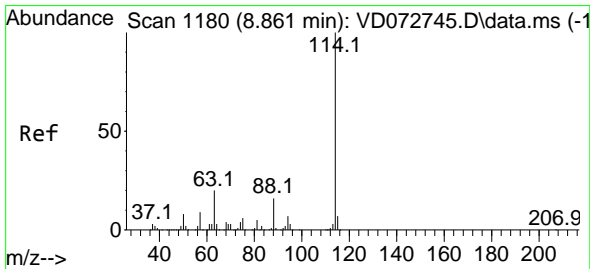
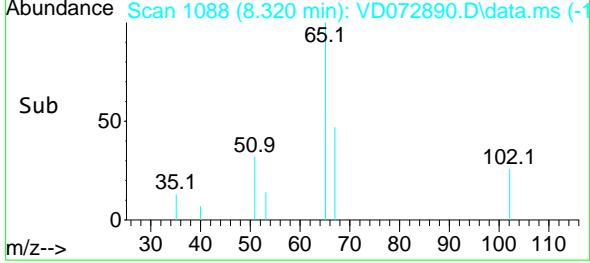
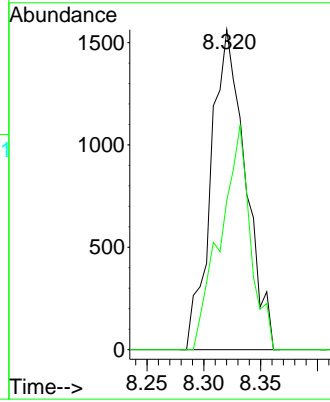
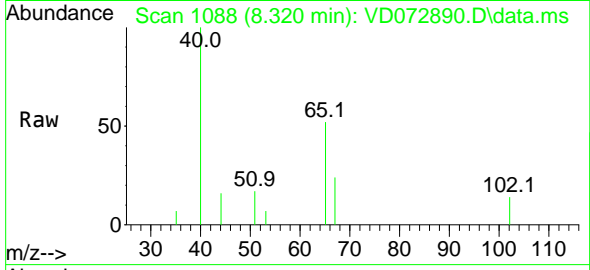




#33
 1,2-Dichloroethane-d4
 Concen: 62.785 ug/l
 RT: 8.320 min Scan# 1088
 Delta R.T. -0.006 min
 Lab File: VD072890.D
 Acq: 09 May 2022 15:00

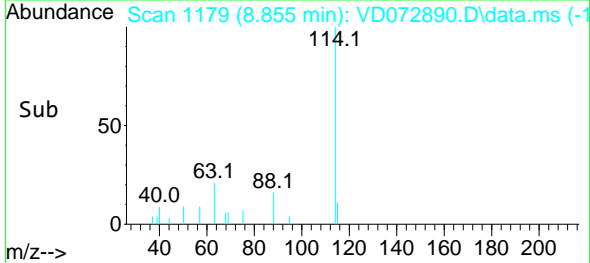
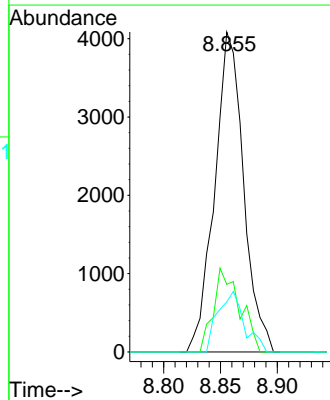
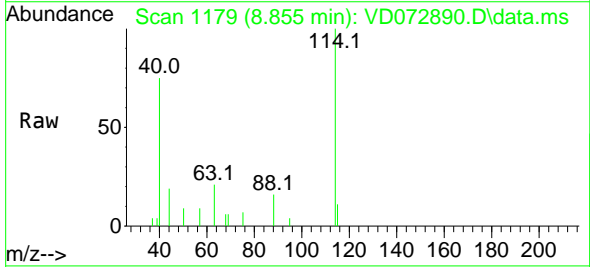
Instrument : MSVOA_D
 ClientSampleId : OK-01-050422RE

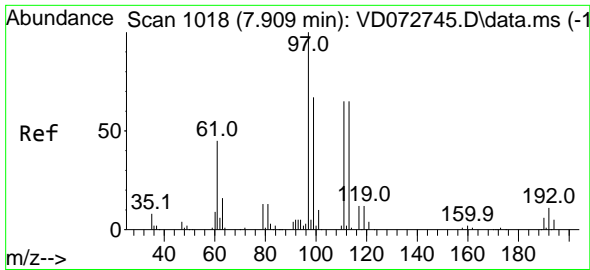
Tgt Ion: 65 Resp: 3304
 Ion Ratio Lower Upper
 65 100
 67 61.2 0.0 101.4



#34
 1,4-Difluorobenzene
 Concen: 50.000 ug/l
 RT: 8.855 min Scan# 1179
 Delta R.T. -0.006 min
 Lab File: VD072890.D
 Acq: 09 May 2022 15:00

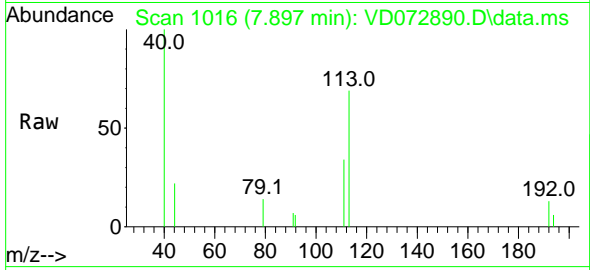
Tgt Ion: 114 Resp: 7233
 Ion Ratio Lower Upper
 114 100
 63 21.1 0.0 46.6
 88 15.7 0.0 33.2



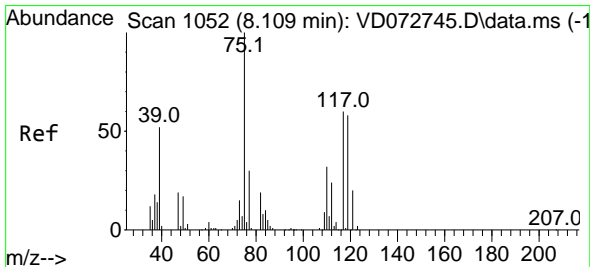
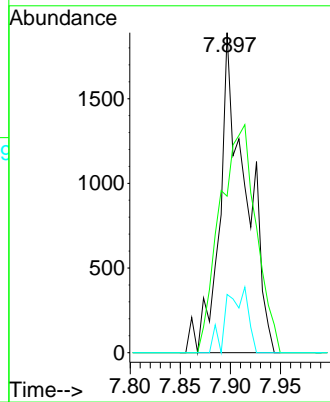
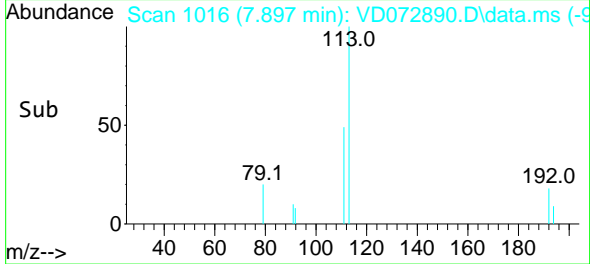


#35
 Dibromofluoromethane
 Concen: 67.640 ug/l
 RT: 7.897 min Scan# 1016
 Delta R.T. -0.012 min
 Lab File: VD072890.D
 Acq: 09 May 2022 15:00

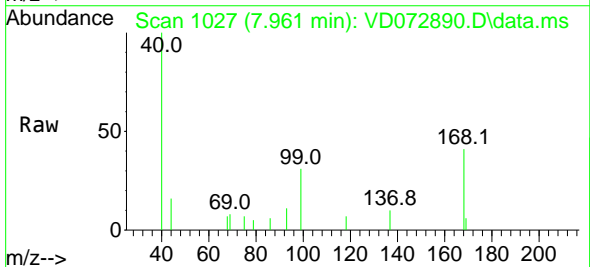
Instrument : MSVOA_D
 ClientSampleId : OK-01-050422RE



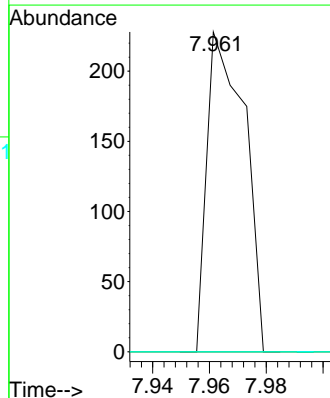
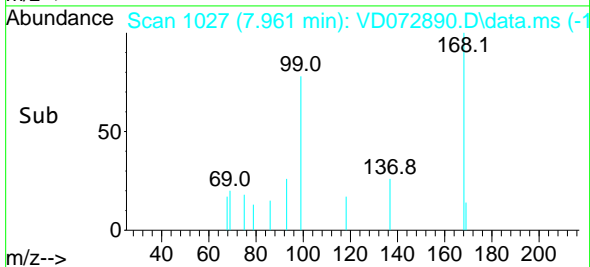
Tgt Ion: 113 Resp: 3436
 Ion Ratio Lower Upper
 113 100
 111 98.3 83.8 125.6
 192 16.7 14.6 21.8

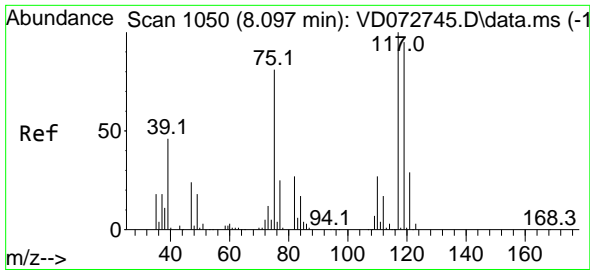


#36
 1,1-Dichloropropene
 Concen: 2.530 ug/l
 RT: 7.961 min Scan# 1027
 Delta R.T. -0.148 min
 Lab File: VD072890.D
 Acq: 09 May 2022 15:00



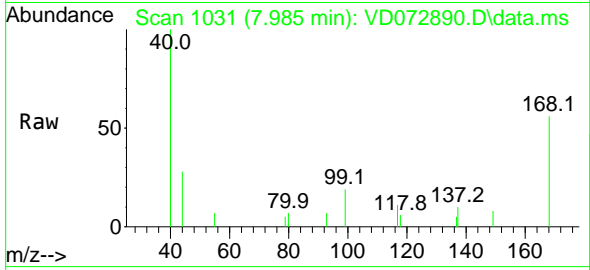
Tgt Ion: 75 Resp: 209
 Ion Ratio Lower Upper
 75 100
 110 0.0 16.4 49.1#
 77 0.0 24.2 36.2#



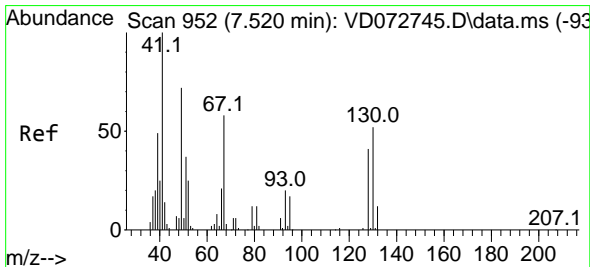
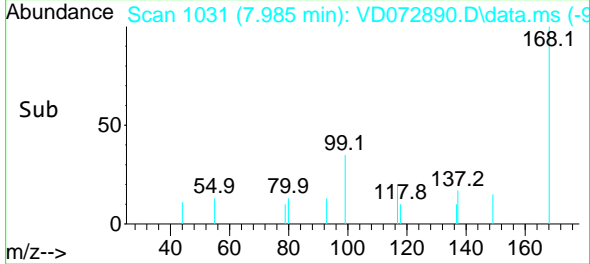
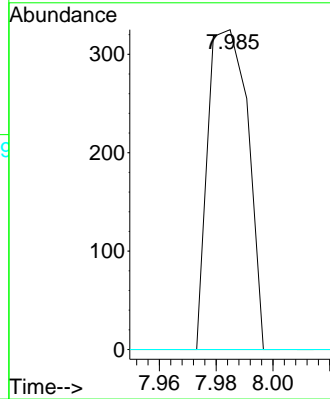


#38
 Carbon Tetrachloride
 Concen: 3.697 ug/l
 RT: 7.985 min Scan# 1050
 Delta R.T. -0.112 min
 Lab File: VD072890.D
 Acq: 09 May 2022 15:00

Instrument : MSVOA_D
 ClientSampleId : OK-01-050422RE

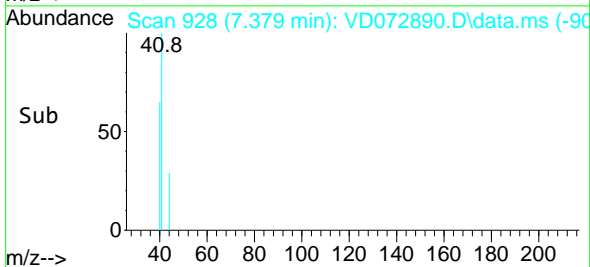
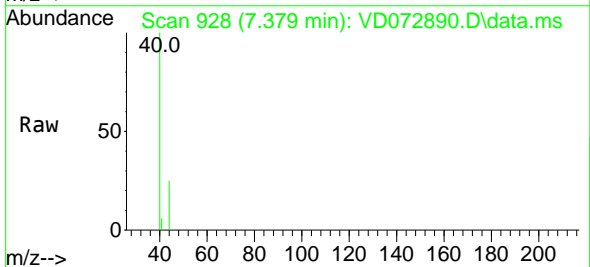
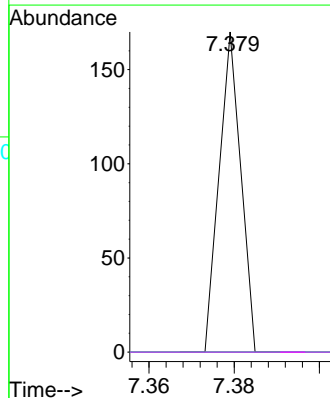


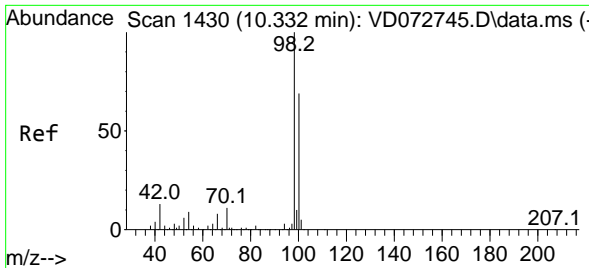
Tgt Ion: 117 Resp: 317
 Ion Ratio Lower Upper
 117 100
 119 0.0 75.8 113.6#
 121 0.0 24.5 36.7#



#41
 Methacrylonitrile
 Concen: 2.654 ug/l
 RT: 7.379 min Scan# 928
 Delta R.T. -0.141 min
 Lab File: VD072890.D
 Acq: 09 May 2022 15:00

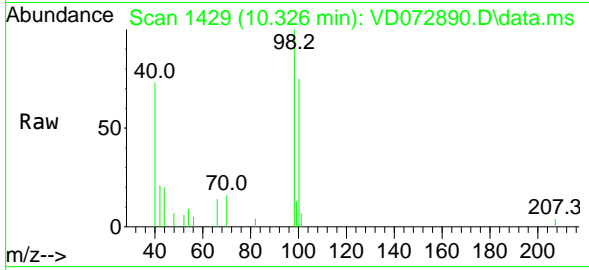
Tgt Ion: 41 Resp: 60
 Ion Ratio Lower Upper
 41 100
 39 0.0 44.6 67.0#
 67 0.0 48.2 72.4#
 52 0.0 22.8 34.2#



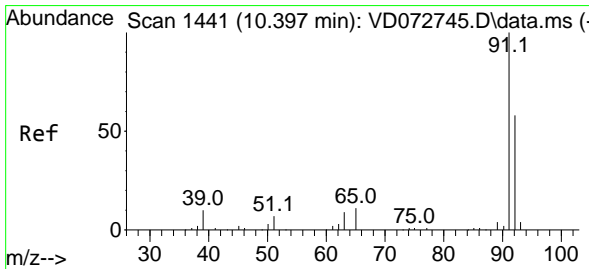
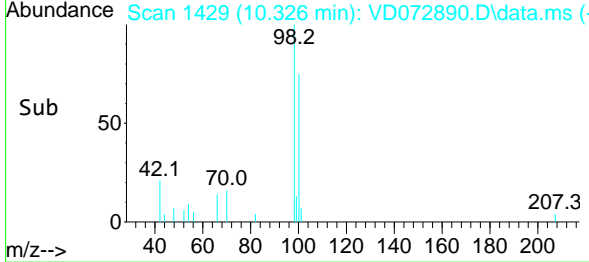
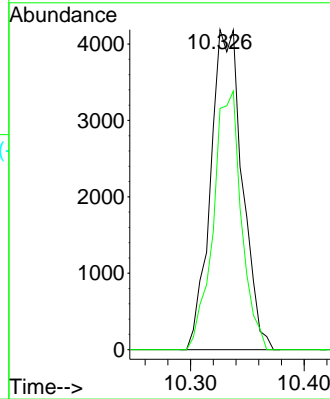


#50
 Toluene-d8
 Concen: 44.655 ug/l
 RT: 10.326 min Scan# 1430
 Delta R.T. -0.006 min
 Lab File: VD072890.D
 Acq: 09 May 2022 15:00

Instrument : MSVOA_D
 ClientSampleId : OK-01-050422RE

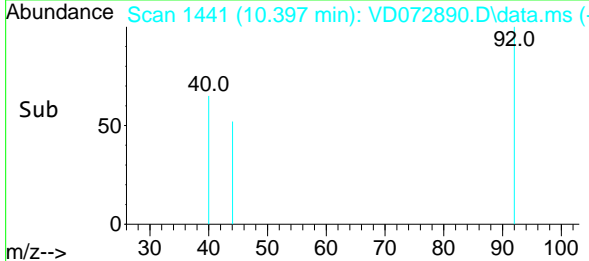
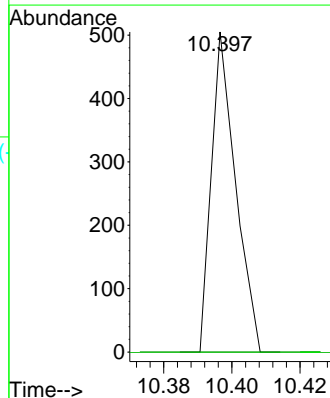
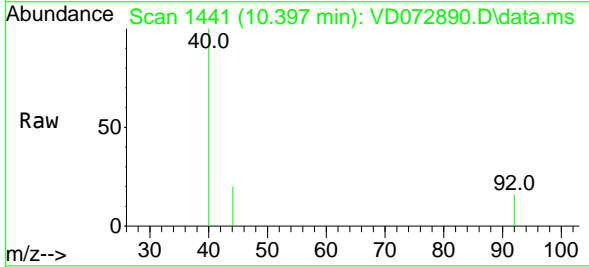


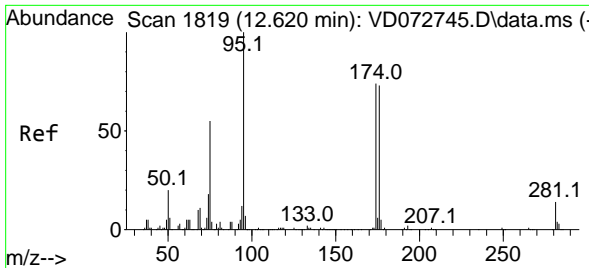
Tgt Ion: 98 Resp: 8137
 Ion Ratio Lower Upper
 98 100
 100 71.3 52.4 78.6



#52
 Toluene
 Concen: 1.673 ug/l
 RT: 10.397 min Scan# 1441
 Delta R.T. -0.001 min
 Lab File: VD072890.D
 Acq: 09 May 2022 15:00

Tgt Ion: 92 Resp: 249
 Ion Ratio Lower Upper
 92 100
 91 0.0 139.6 209.4#

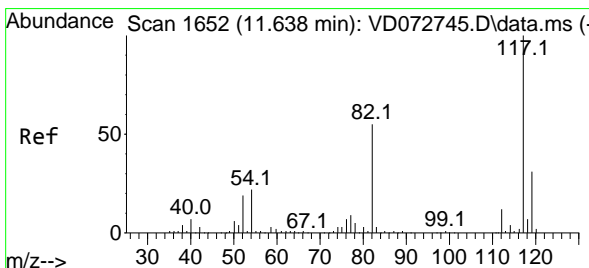
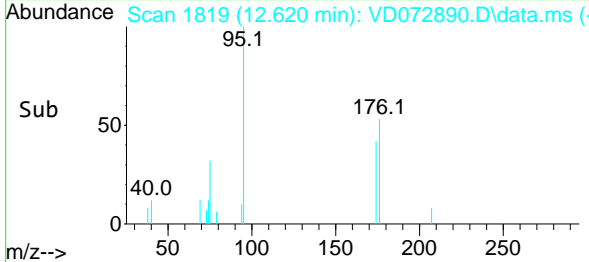
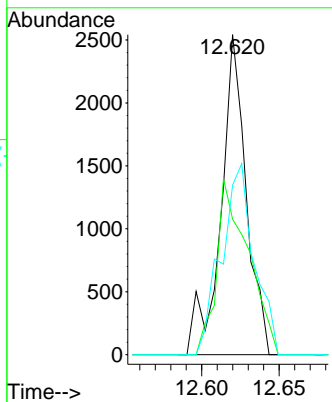
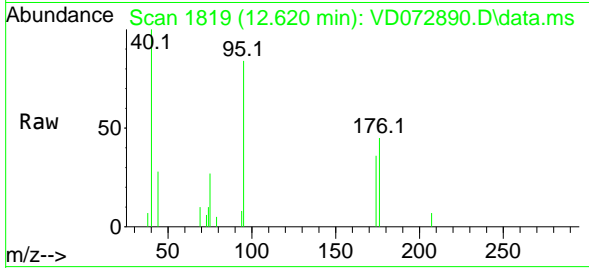




#62
 4-Bromofluorobenzene
 Concen: 42.388 ug/l
 RT: 12.620 min Scan# 1819
 Delta R.T. -0.000 min
 Lab File: VD072890.D
 Acq: 09 May 2022 15:00

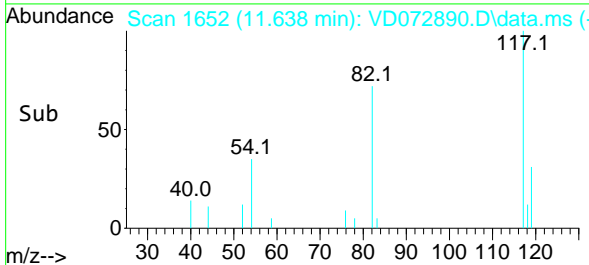
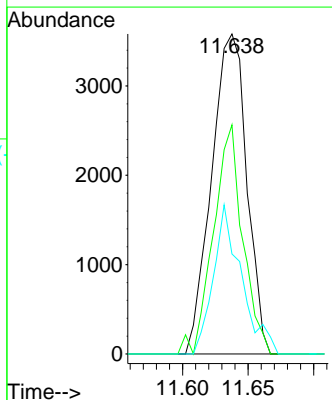
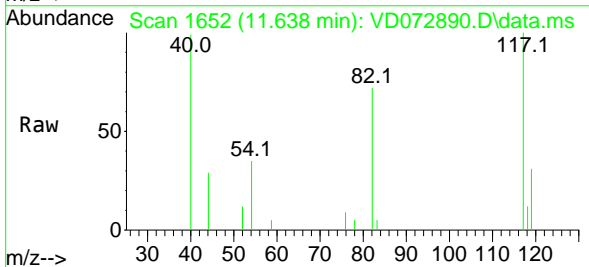
Instrument : MSVOA_D
 ClientSampleId : OK-01-050422RE

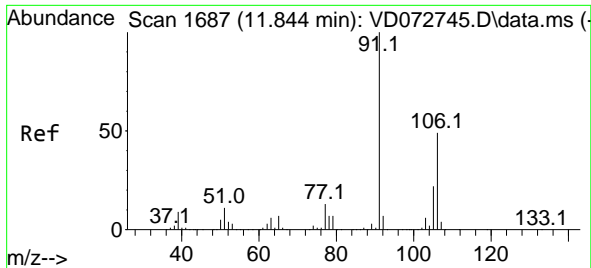
Tgt Ion	Resp	Lower	Upper
95	2880	100	
174	68.7	0.0	152.8
176	77.7	0.0	145.4



#63
 Chlorobenzene-d5
 Concen: 50.000 ug/l
 RT: 11.638 min Scan# 1652
 Delta R.T. -0.000 min
 Lab File: VD072890.D
 Acq: 09 May 2022 15:00

Tgt Ion	Resp	Lower	Upper
117	6694	100	
82	71.6	45.3	67.9#
119	31.2	26.6	40.0

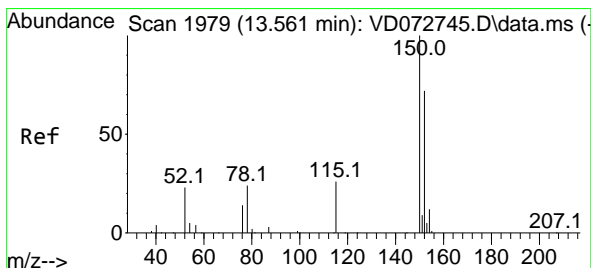
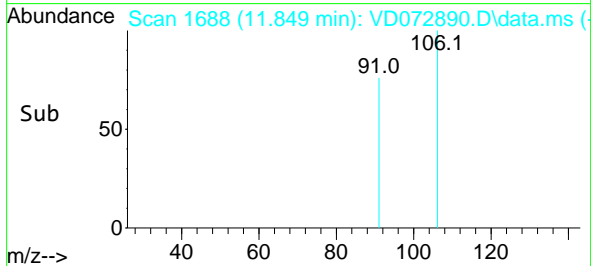
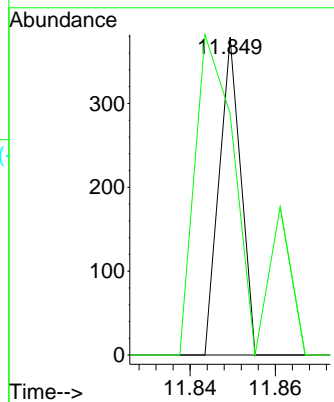
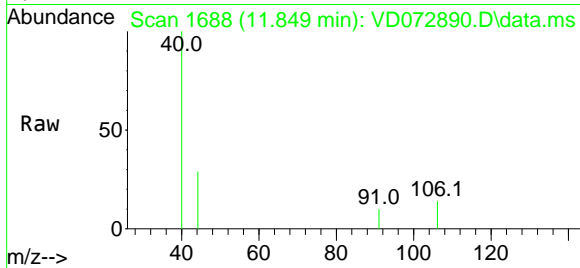




#68
 m/p-Xylenes
 Concen: 1.298 ug/l
 RT: 11.849 min Scan# 1688
 Delta R.T. 0.005 min
 Lab File: VD072890.D
 Acq: 09 May 2022 15:00

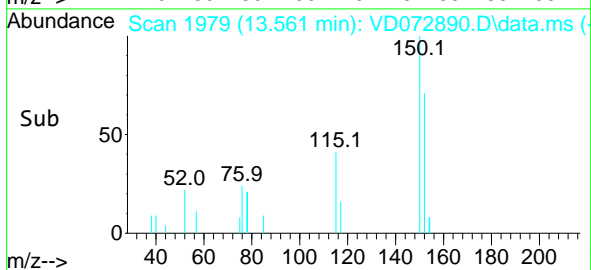
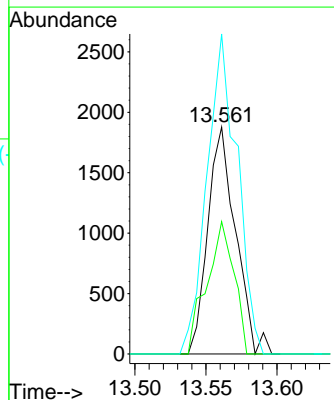
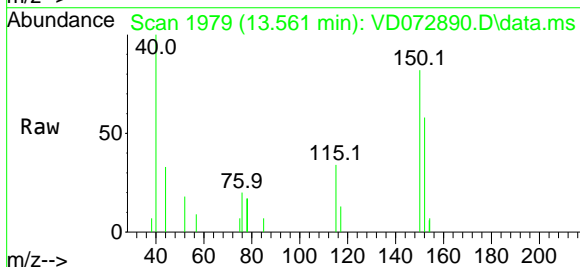
Instrument : MSVOA_D
 ClientSampleId : OK-01-050422RE

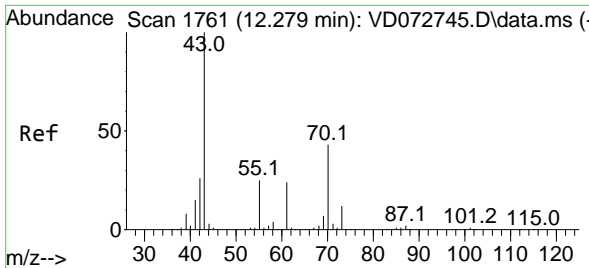
Tgt Ion:106 Resp: 134
 Ion Ratio Lower Upper
 106 100
 91 223.1 163.7 245.5



#72
 1,4-Dichlorobenzene-d4
 Concen: 50.000 ug/l
 RT: 13.561 min Scan# 1979
 Delta R.T. 0.000 min
 Lab File: VD072890.D
 Acq: 09 May 2022 15:00

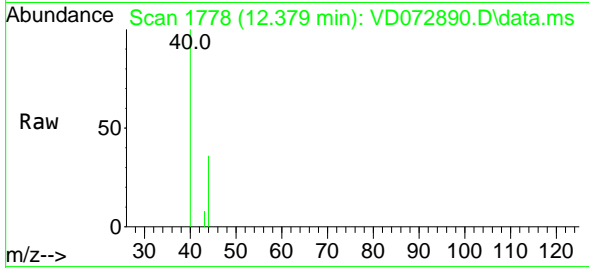
Tgt Ion:152 Resp: 2563
 Ion Ratio Lower Upper
 152 100
 115 56.8 31.3 93.8
 150 152.9 0.0 348.6





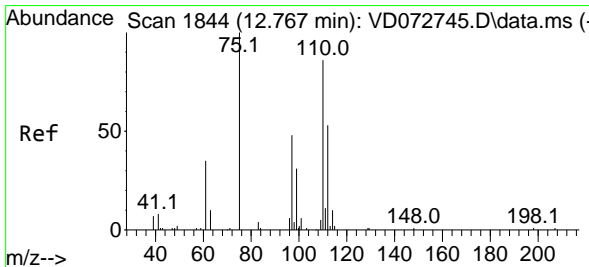
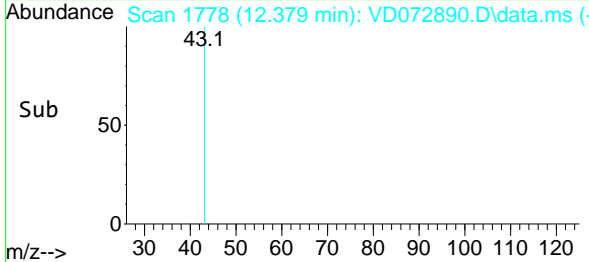
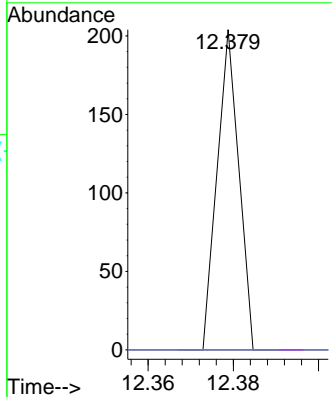
#74
 N-amy1 acetate
 Concen: 1.450 ug/l
 RT: 12.379 min Scan# 11
 Delta R.T. 0.100 min
 Lab File: VD072890.D
 Acq: 09 May 2022 15:00

Instrument : MSVOA_D
 ClientSampleId : OK-01-050422RE



Tgt Ion: 43 Resp: 72

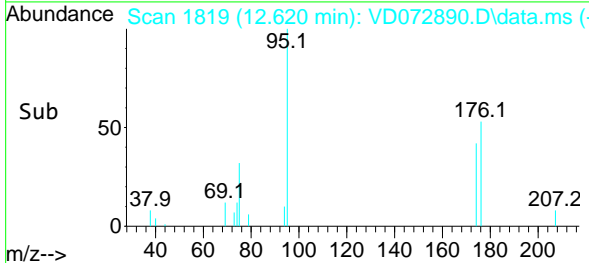
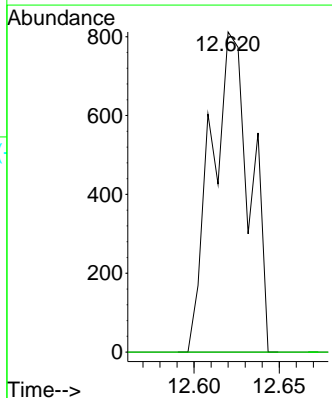
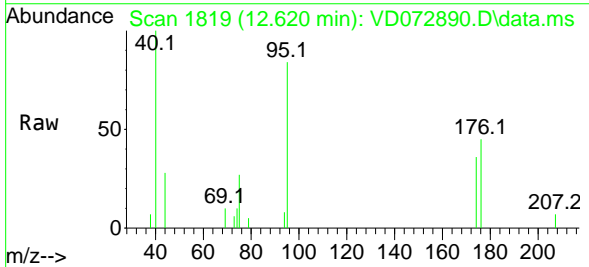
Ion	Ratio	Lower	Upper
43	100		
70	0.0	31.3	46.9#
55	0.0	20.0	30.0#
61	0.0	17.8	26.8#

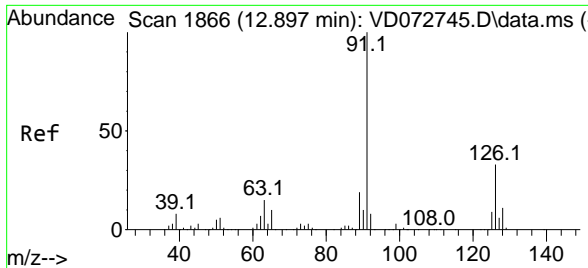


#76
 1,2,3-Trichloropropane
 Concen: 44.963 ug/l
 RT: 12.620 min Scan# 1819
 Delta R.T. -0.147 min
 Lab File: VD072890.D
 Acq: 09 May 2022 15:00

Tgt Ion: 75 Resp: 1285

Ion	Ratio	Lower	Upper
75	100		
77	0.0	0.0	0.0

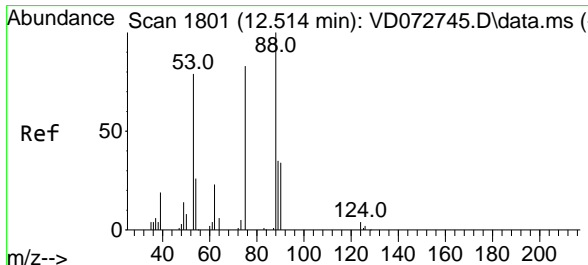
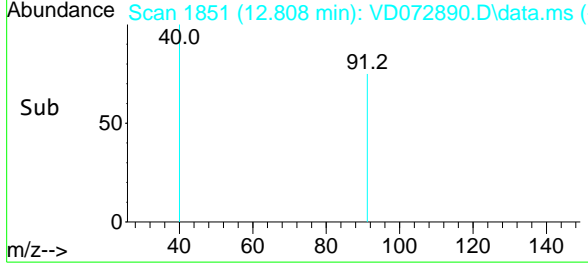
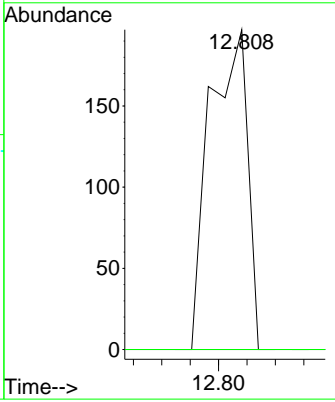
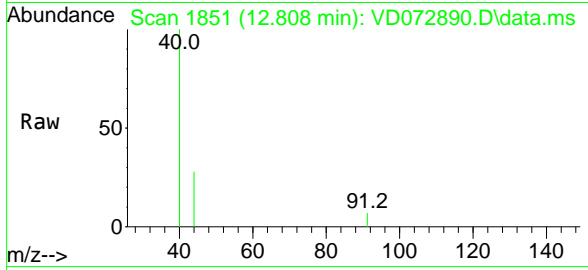




#79
 2-Chlorotoluene
 Concen: 1.233 ug/l
 RT: 12.808 min Scan# 1851
 Delta R.T. -0.089 min
 Lab File: VD072890.D
 Acq: 09 May 2022 15:00

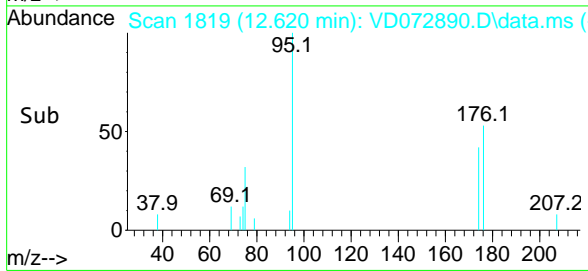
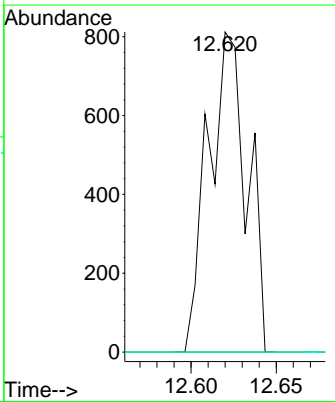
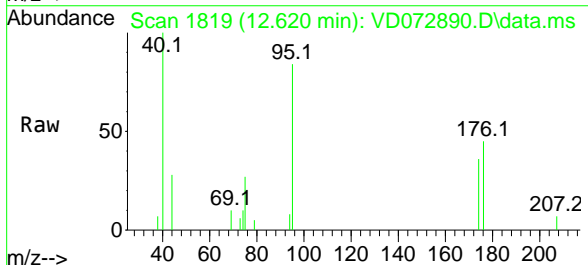
Instrument : MSVOA_D
 ClientSampleId : OK-01-050422RE

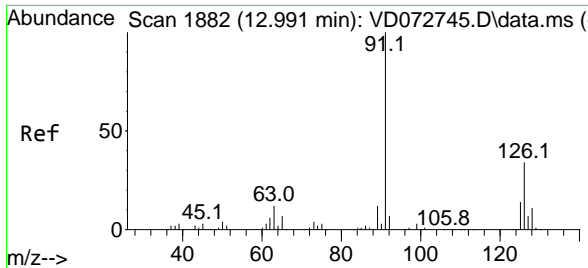
Tgt Ion: 91 Resp: 181
 Ion Ratio Lower Upper
 91 100
 126 0.0 16.2 48.6#



#81
 trans-1,4-Dichloro-2-butene
 Concen: 103.396 ug/l
 RT: 12.620 min Scan# 1819
 Delta R.T. 0.106 min
 Lab File: VD072890.D
 Acq: 09 May 2022 15:00

Tgt Ion: 75 Resp: 1285
 Ion Ratio Lower Upper
 75 100
 53 0.0 86.5 129.7#
 89 0.0 33.9 50.9#





#82
 4-Chlorotoluene
 Concen: 1.180 ug/l
 RT: 12.808 min Scan# 181
 Delta R.T. -0.183 min
 Lab File: VD072890.D
 Acq: 09 May 2022 15:00

Instrument : MSVOA_D
 ClientSampleId : OK-01-050422RE

Tgt Ion: 91 Resp: 181

Ion	Ratio	Lower	Upper
91	100		
126	0.0	16.5	49.5#

