

Data Path : Z:\voasrv\HPCHEM1\MSVOA_D\Data\VD050922\
 Data File : VD072893.D
 Acq On : 09 May 2022 16:25
 Operator : VA/SY
 Sample : N2685-04RE
 Misc : 5.92G/5.00ml/MSVOA_D/SOIL
 ALS Vial : 12 Sample Multiplier: 1

Instrument :
 MSVOA_D
 ClientSampleId :
 WC-14B-5-GRRE

Quant Time: May 09 17:48:05 2022
 Quant Method : Z:\voasrv\HPCHEM1\MSVOA_D\Method\82D050222S.M
 Quant Title : SW846 8260
 QLast Update : Tue May 03 08:33:49 2022
 Response via : Initial Calibration

Compound	R.T.	QIon	Response	Conc	Units	Dev(Min)
Internal Standards						
1) Pentafluorobenzene	7.979	168	29979	50.000	ug/l	0.00
34) 1,4-Difluorobenzene	8.855	114	57356	50.000	ug/l	0.00
63) Chlorobenzene-d5	11.638	117	65387	50.000	ug/l	0.00
72) 1,4-Dichlorobenzene-d4	13.561	152	29598	50.000	ug/l	0.00
System Monitoring Compounds						
33) 1,2-Dichloroethane-d4	8.320	65	30438	78.216	ug/l	0.00
Spiked Amount	50.000	Range	50 - 163	Recovery	=	156.440%
35) Dibromofluoromethane	7.908	113	11175	27.742	ug/l	0.00
Spiked Amount	50.000	Range	54 - 147	Recovery	=	55.480%
50) Toluene-d8	10.332	98	71321	49.359	ug/l	0.00
Spiked Amount	50.000	Range	49 - 140	Recovery	=	98.720%
62) 4-Bromofluorobenzene	12.620	95	37761	70.086	ug/l	0.00
Spiked Amount	50.000	Range	25 - 144	Recovery	=	140.180%
Target Compounds						
						Qvalue
3) Chloromethane	2.203	50	509	1.181	ug/l #	37
5) Bromomethane	2.779	94	1104	3.197	ug/l	96
10) Methyl Iodide	4.326	142	644	1.597	ug/l #	61
16) Acetone	4.156	43	22492	312.268	ug/l	92
17) Carbon Disulfide	4.426	76	9846	8.662	ug/l	100
20) Methylene Chloride	4.962	84	407	Below Cal	#	62
25) 2-Butanone	7.208	43	7973	70.317	ug/l #	80
31) Cyclohexane	7.979	56	1401	2.059	ug/l #	61
36) 1,1-Dichloropropene	7.985	75	3050	4.657	ug/l #	43
37) Ethyl Acetate	7.208	43	7973	26.479	ug/l #	72
38) Carbon Tetrachloride	7.967	117	3225	4.743	ug/l #	29
39) Methylcyclohexane	9.338	83	11835	15.578	ug/l #	74
43) Isopropyl Acetate	8.438	43	2299	4.137	ug/l #	54
48) Methyl methacrylate	9.485	41	299	1.100	ug/l #	35
51) 4-Methyl-2-Pentanone	10.226	43	921	3.189	ug/l #	67
52) Toluene	10.402	92	7718	6.541	ug/l	100
55) 1,1,2-Trichloroethane	10.767	97	13415	36.215	ug/l #	20
56) Ethyl methacrylate	10.632	69	5552	12.730	ug/l #	73
59) 2-Hexanone	10.944	43	24280	124.949	ug/l #	32
61) 1,2-Dibromoethane	11.226	107	429	1.190	ug/l #	1
68) m/p-Xylenes	11.843	106	2098	2.081	ug/l #	52
69) o-Xylene	12.167	106	1050	1.115	ug/l	52
73) Isopropylbenzene	12.467	105	74740	32.456	ug/l	99
74) N-amyl acetate	12.255	43	70826	123.504	ug/l #	62
75) 1,1,2,2-Tetrachloroethane	12.696	83	9429	20.284	ug/l #	70
76) 1,2,3-Trichloropropane	12.620	75	15417	46.713	ug/l #	100
78) n-propylbenzene	12.808	91	48521	16.718	ug/l	95
79) 2-Chlorotoluene	12.867	91	2029	1.197	ug/l	78
80) 1,3,5-Trimethylbenzene	12.949	105	4116	2.108	ug/l	100
81) trans-1,4-Dichloro-2-b...	12.467	75	1128	7.860	ug/l #	25
82) 4-Chlorotoluene	12.932	91	4249	2.399	ug/l	84
83) tert-Butylbenzene	13.208	119	20761	12.506	ug/l	96
84) 1,2,4-Trimethylbenzene	13.255	105	10312	5.283	ug/l	87
85) sec-Butylbenzene	13.385	105	108978	43.525	ug/l #	75
86) p-Isopropyltoluene	13.655	119	42180	20.547	ug/l	91
89) n-Butylbenzene	13.826	91	44435	22.345	ug/l	92

Data Path : Z:\voasrv\HPCHEM1\MSVOA_D\Data\VD050922\
 Data File : VD072893.D
 Acq On : 09 May 2022 16:25
 Operator : VA/SY
 Sample : N2685-04RE
 Misc : 5.92G/5.00ml/MSVOA_D/SOIL
 ALS Vial : 12 Sample Multiplier: 1

Instrument :
 MSVOA_D
 ClientSampleId :
 WC-14B-5-GRRE

Quant Time: May 09 17:48:05 2022
 Quant Method : Z:\voasrv\HPCHEM1\MSVOA_D\Method\82D050222S.M
 Quant Title : SW846 8260
 QLast Update : Tue May 03 08:33:49 2022
 Response via : Initial Calibration

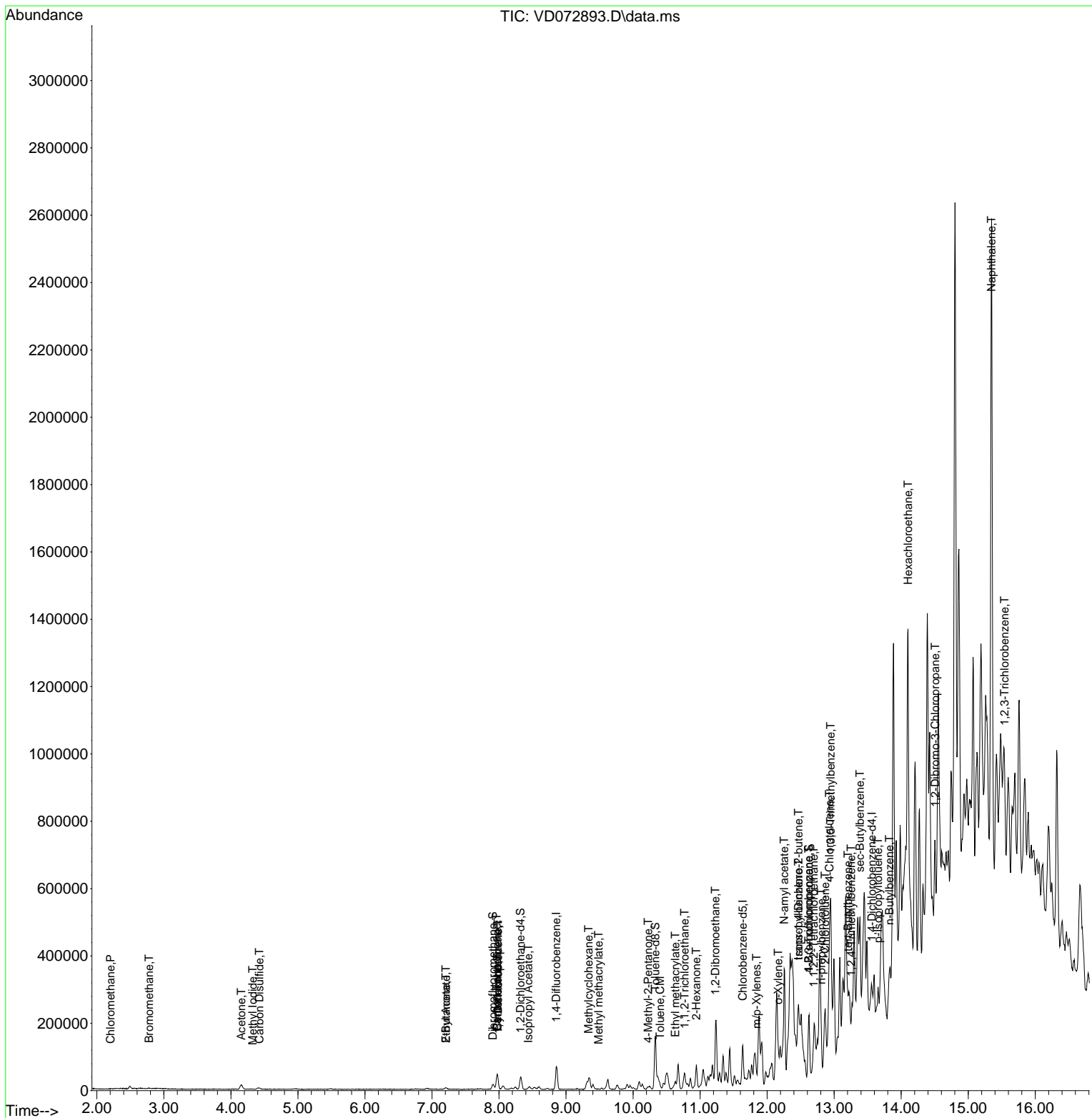
Compound	R.T.	QIon	Response	Conc	Units	Dev(Min)
90) Hexachloroethane	14.102	117	41750	99.277	ug/l #	17
92) 1,2-Dibromo-3-Chloropr...	14.508	75	1802	24.455	ug/l #	16
95) Naphthalene	15.349	128	7182	6.870	ug/l #	1
96) 1,2,3-Trichlorobenzene	15.543	180	5400	10.714	ug/l #	1

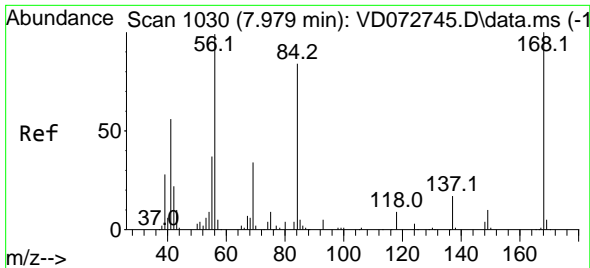
(#) = qualifier out of range (m) = manual integration (+) = signals summed

Data Path : Z:\voasrv\HPCHEM1\MSVOA_D\Data\VD050922\
 Data File : VD072893.D
 Acq On : 09 May 2022 16:25
 Operator : VA/SY
 Sample : N2685-04RE
 Misc : 5.92G/5.00ml/MSVOA_D/SOIL
 ALS Vial : 12 Sample Multiplier: 1

Instrument :
 MSVOA_D
 ClientSampleId :
 WC-14B-5-GRRE

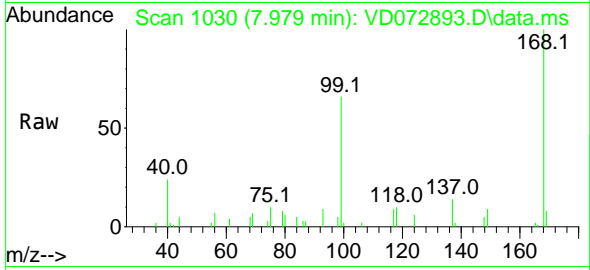
Quant Time: May 09 17:48:05 2022
 Quant Method : Z:\voasrv\HPCHEM1\MSVOA_D\Method\82D050222S.M
 Quant Title : SW846 8260
 QLast Update : Tue May 03 08:33:49 2022
 Response via : Initial Calibration



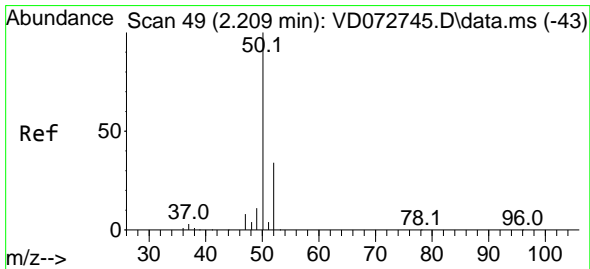
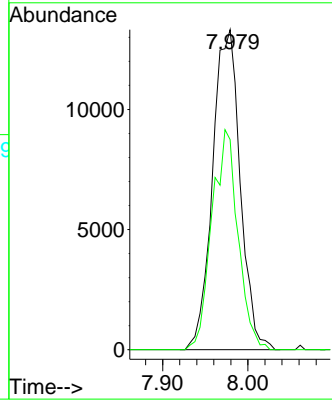
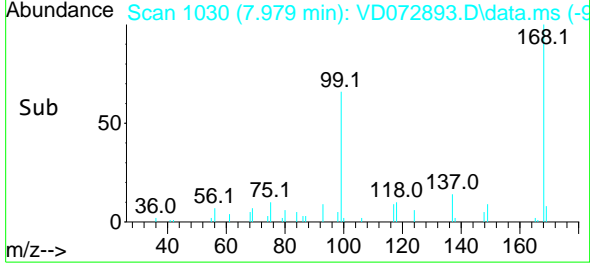


#1
 Pentafluorobenzene
 Concen: 50.000 ug/l
 RT: 7.979 min Scan# 1030
 Delta R.T. -0.000 min
 Lab File: VD072893.D
 Acq: 09 May 2022 16:25

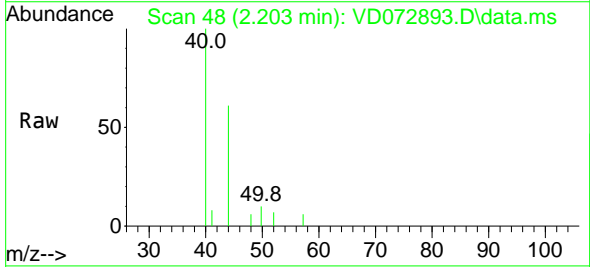
Instrument : MSVOA_D
 ClientSampleId : WC-14B-5-GRRE



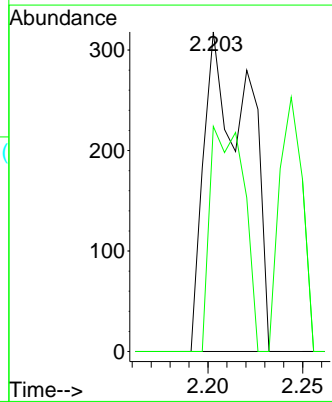
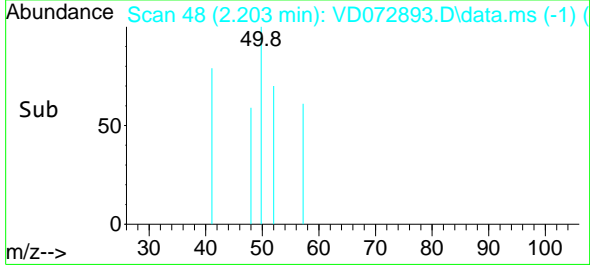
Tgt Ion:168 Resp: 29979
 Ion Ratio Lower Upper
 168 100
 99 65.7 49.8 74.6

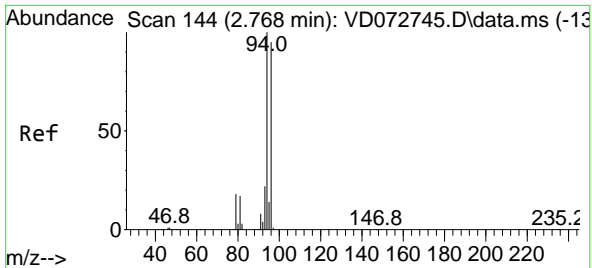


#3
 Chloromethane
 Concen: 1.181 ug/l
 RT: 2.203 min Scan# 48
 Delta R.T. -0.006 min
 Lab File: VD072893.D
 Acq: 09 May 2022 16:25



Tgt Ion: 50 Resp: 509
 Ion Ratio Lower Upper
 50 100
 52 70.4 27.4 41.0#

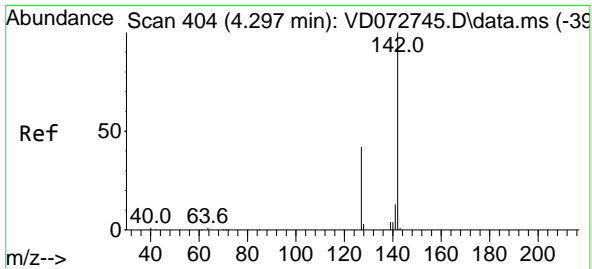
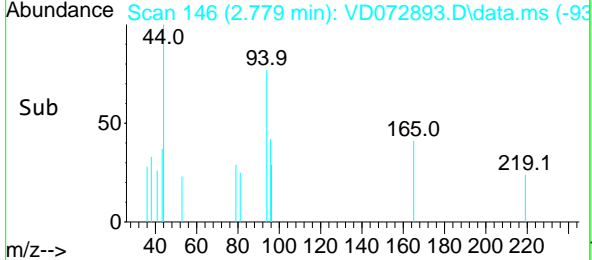
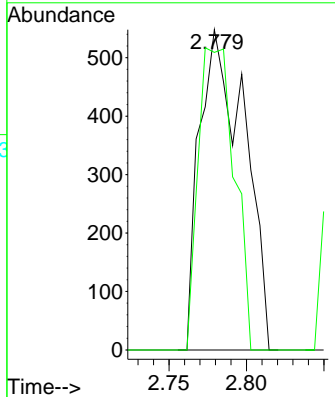
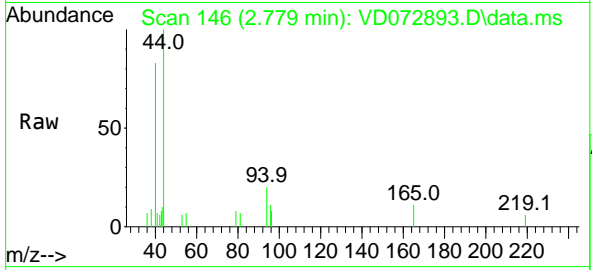




#5
 Bromomethane
 Concen: 3.197 ug/l
 RT: 2.779 min Scan# 146
 Delta R.T. 0.011 min
 Lab File: VD072893.D
 Acq: 09 May 2022 16:25

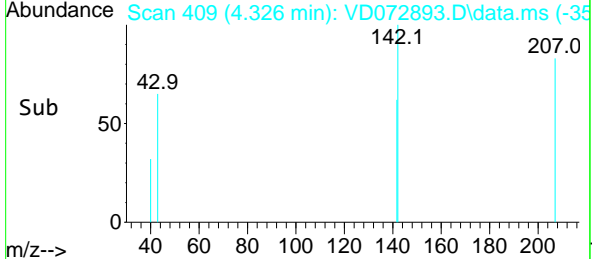
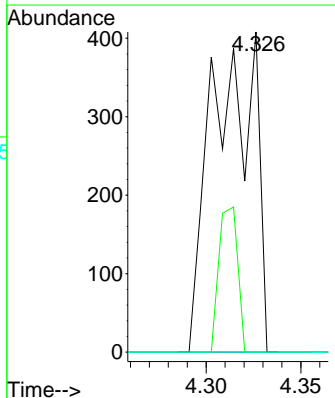
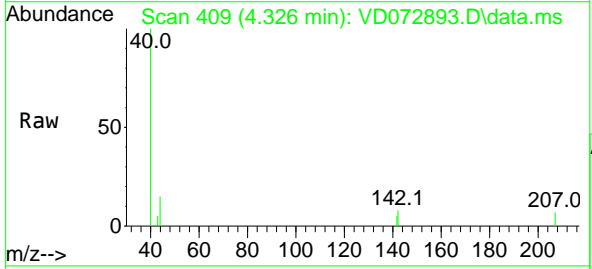
Instrument : MSVOA_D
 ClientSampleId : WC-14B-5-GRRE

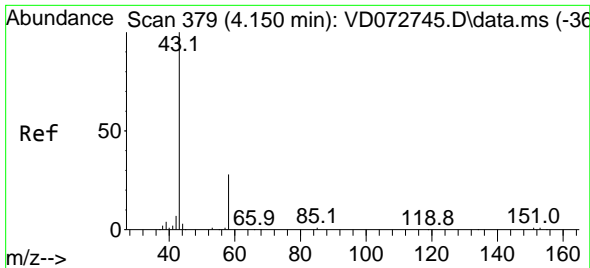
Tgt Ion: 94 Resp: 1104
 Ion Ratio Lower Upper
 94 100
 96 92.9 77.6 116.4



#10
 Methyl Iodide
 Concen: 1.597 ug/l
 RT: 4.326 min Scan# 409
 Delta R.T. 0.029 min
 Lab File: VD072893.D
 Acq: 09 May 2022 16:25

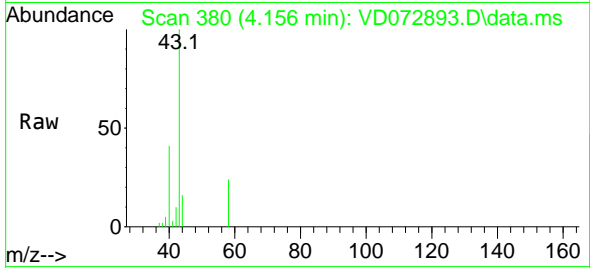
Tgt Ion:142 Resp: 644
 Ion Ratio Lower Upper
 142 100
 127 19.9 37.3 55.9#
 141 0.0 11.7 17.5#



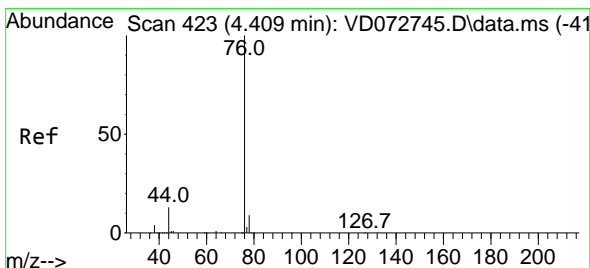
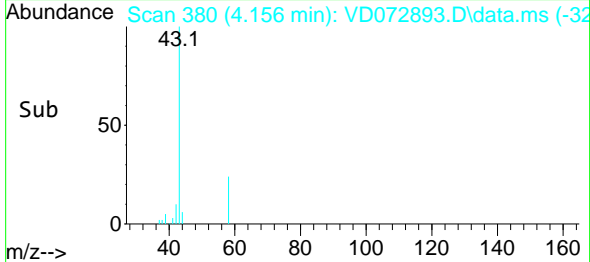
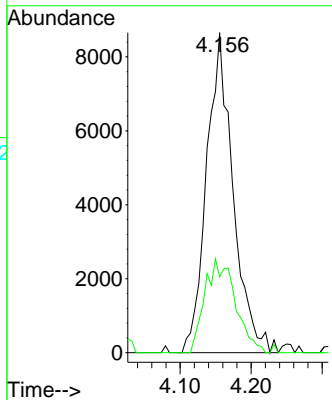


#16
 Acetone
 Concen: 312.268 ug/l
 RT: 4.156 min Scan# 31
 Delta R.T. 0.006 min
 Lab File: VD072893.D
 Acq: 09 May 2022 16:25

Instrument :
 MSVOA_D
 ClientSampleId :
 WC-14B-5-GRRE

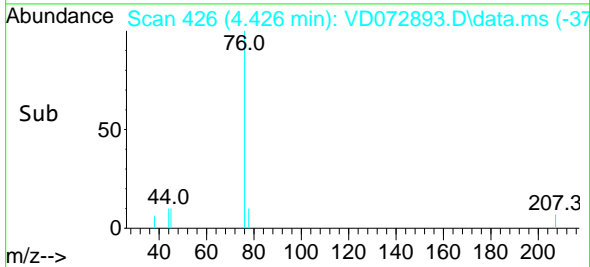
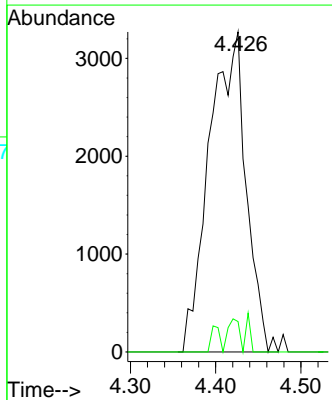
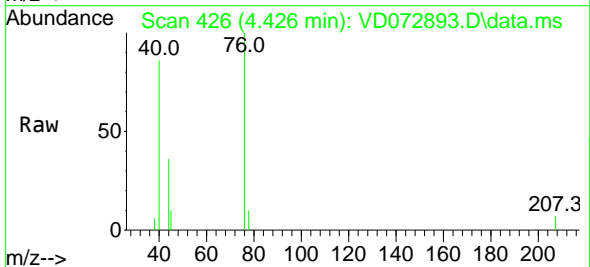


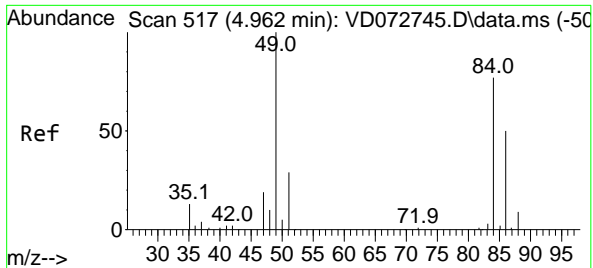
Tgt Ion: 43 Resp: 22492
 Ion Ratio Lower Upper
 43 100
 58 23.7 22.1 33.1



#17
 Carbon Disulfide
 Concen: 8.662 ug/l
 RT: 4.426 min Scan# 426
 Delta R.T. 0.017 min
 Lab File: VD072893.D
 Acq: 09 May 2022 16:25

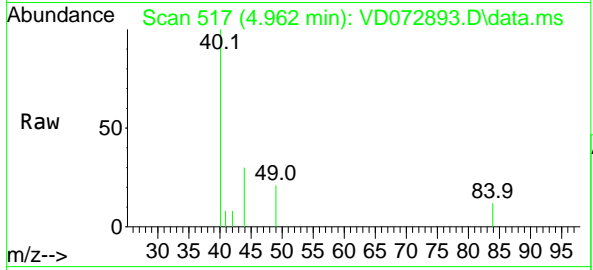
Tgt Ion: 76 Resp: 9846
 Ion Ratio Lower Upper
 76 100
 78 9.5 7.5 11.3



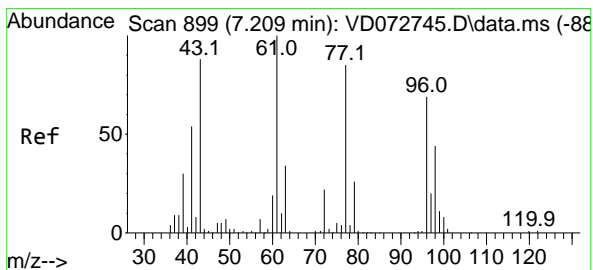
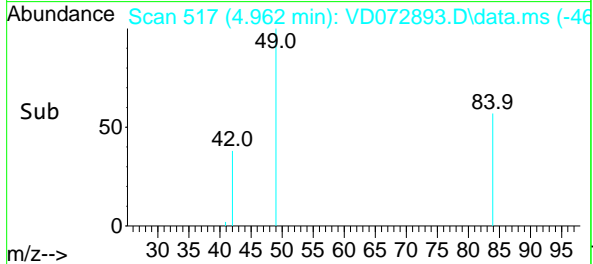
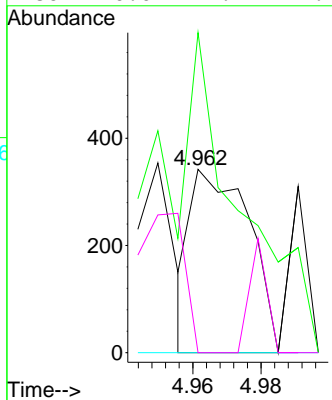


#20
 Methylene Chloride
 Concen: Below Cal
 RT: 4.962 min Scan# 517
 Delta R.T. -0.000 min
 Lab File: VD072893.D
 Acq: 09 May 2022 16:25

Instrument : MSVOA_D
 ClientSampleId : WC-14B-5-GRRE

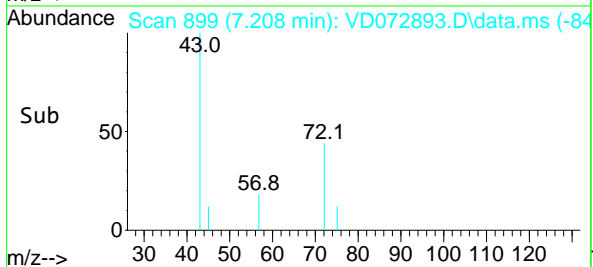
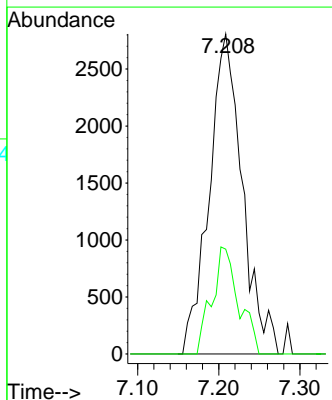
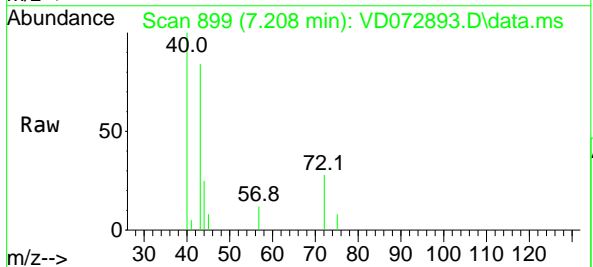


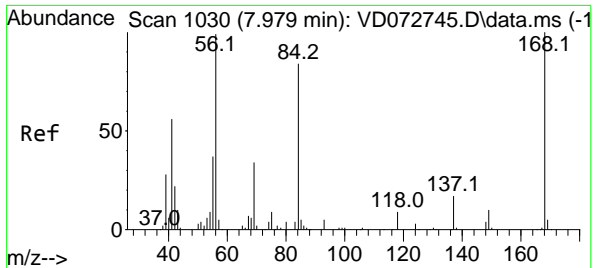
Tgt Ion	Resp	Lower	Upper
84	100		
49	125.1	112.8	169.2
51	0.0	32.6	48.8#
86	0.0	47.9	71.9#



#25
 2-Butanone
 Concen: 70.317 ug/l
 RT: 7.208 min Scan# 899
 Delta R.T. -0.001 min
 Lab File: VD072893.D
 Acq: 09 May 2022 16:25

Tgt Ion	Resp	Lower	Upper
43	100		
72	32.8	18.6	27.8#



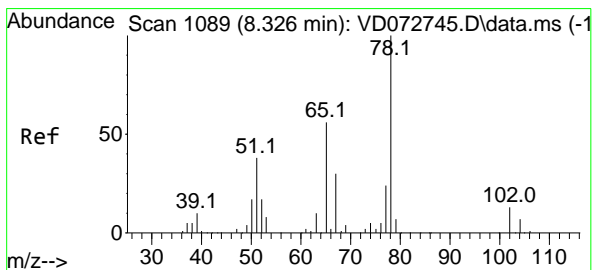
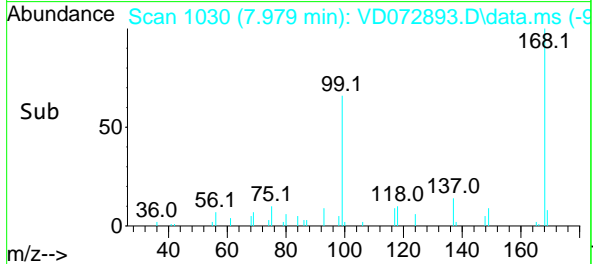
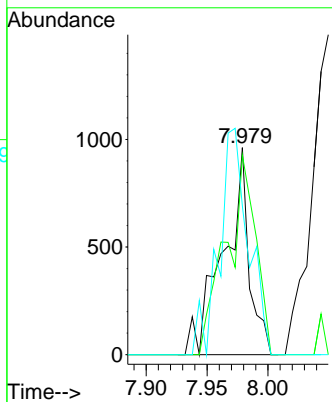
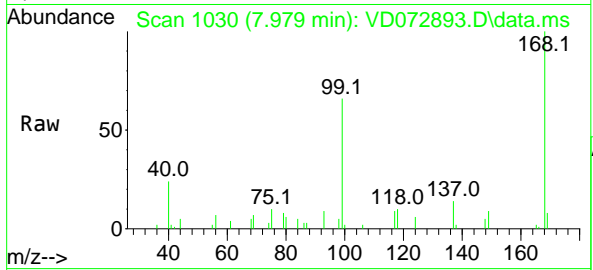


#31
 Cyclohexane
 Concen: 2.059 ug/l
 RT: 7.979 min Scan# 1030
 Delta R.T. -0.000 min
 Lab File: VD072893.D
 Acq: 09 May 2022 16:25

Instrument : MSVOA_D
 ClientSampleId : WC-14B-5-GRRE

Tgt Ion: 56 Resp: 1401

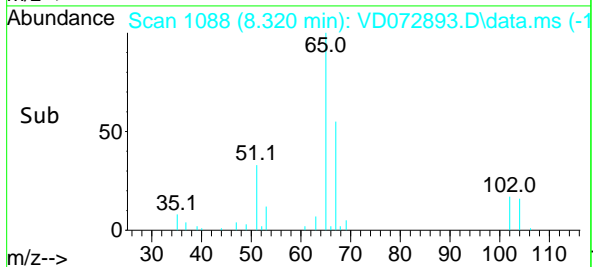
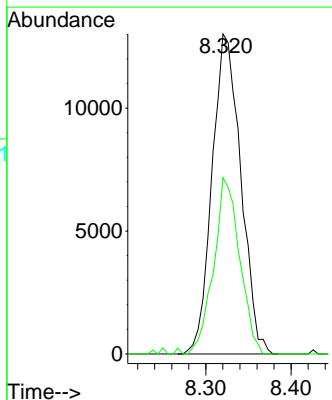
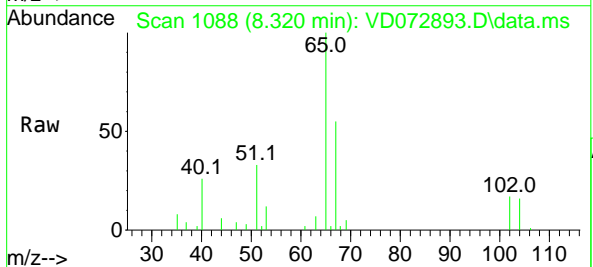
Ion	Ratio	Lower	Upper
56	100		
69	96.5	25.4	38.2#
84	71.8	63.0	94.4

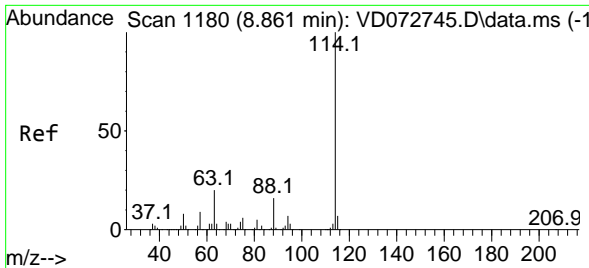


#33
 1,2-Dichloroethane-d4
 Concen: 78.216 ug/l
 RT: 8.320 min Scan# 1088
 Delta R.T. -0.006 min
 Lab File: VD072893.D
 Acq: 09 May 2022 16:25

Tgt Ion: 65 Resp: 30438

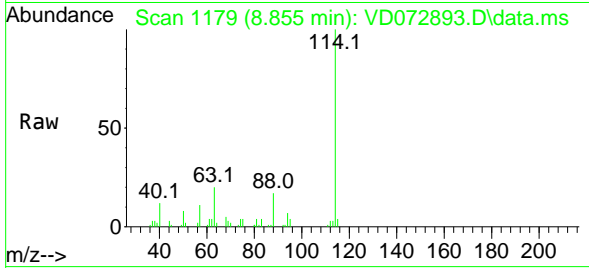
Ion	Ratio	Lower	Upper
65	100		
67	49.9	0.0	101.4





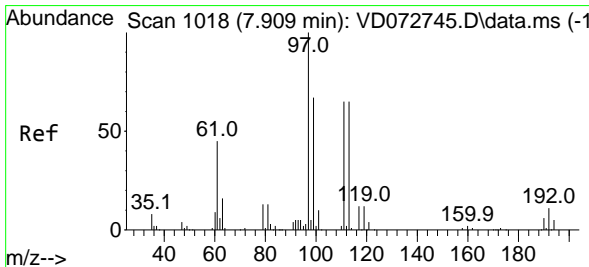
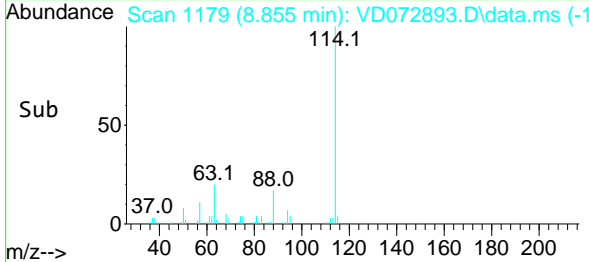
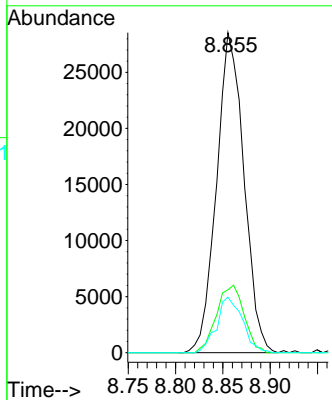
#34
 1,4-Difluorobenzene
 Concen: 50.000 ug/l
 RT: 8.855 min Scan# 1119
 Delta R.T. -0.006 min
 Lab File: VD072893.D
 Acq: 09 May 2022 16:25

Instrument : MSVOA_D
 ClientSampleId : WC-14B-5-GRRE



Tgt Ion:114 Resp: 57356

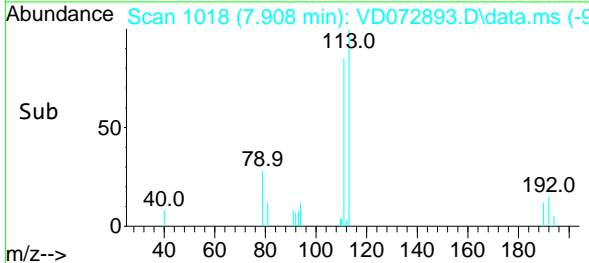
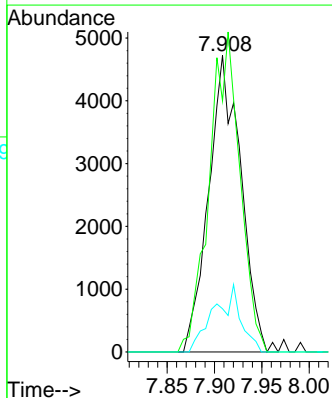
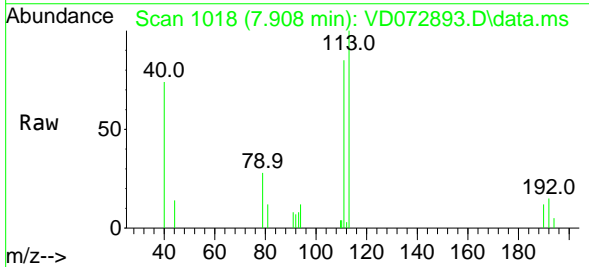
Ion	Ratio	Lower	Upper
114	100		
63	19.6	0.0	46.6
88	17.3	0.0	33.2

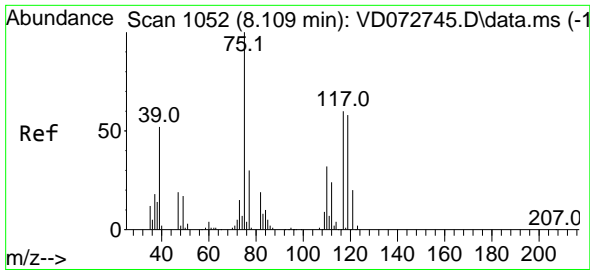


#35
 Dibromofluoromethane
 Concen: 27.742 ug/l
 RT: 7.908 min Scan# 1018
 Delta R.T. -0.001 min
 Lab File: VD072893.D
 Acq: 09 May 2022 16:25

Tgt Ion:113 Resp: 11175

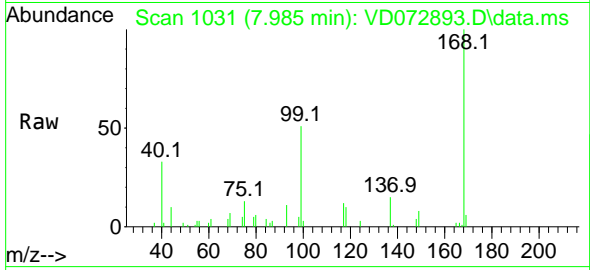
Ion	Ratio	Lower	Upper
113	100		
111	102.5	83.8	125.6
192	18.9	14.6	21.8



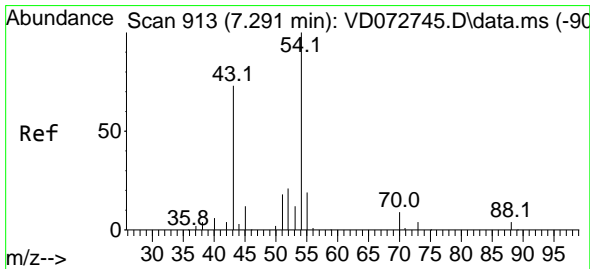
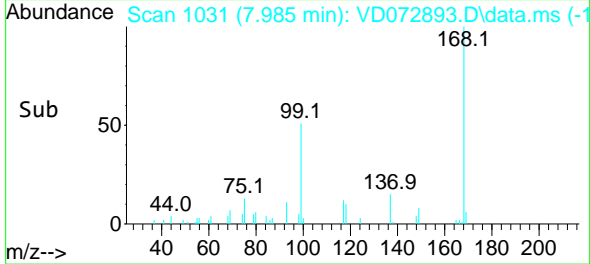
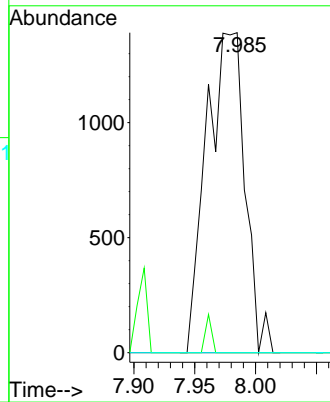


#36
 1,1-Dichloropropene
 Concen: 4.657 ug/l
 RT: 7.985 min Scan# 1052
 Delta R.T. -0.124 min
 Lab File: VD072893.D
 Acq: 09 May 2022 16:25

Instrument : MSVOA_D
 ClientSampleId : WC-14B-5-GRRE

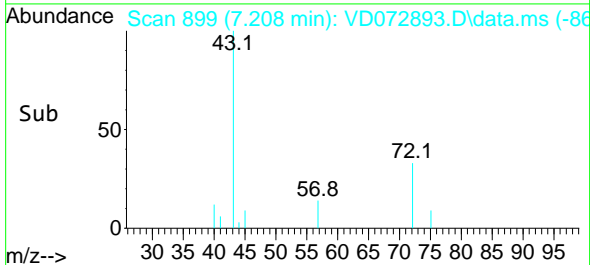
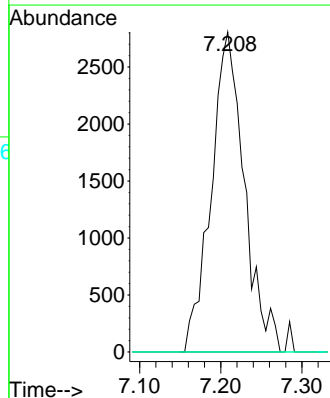
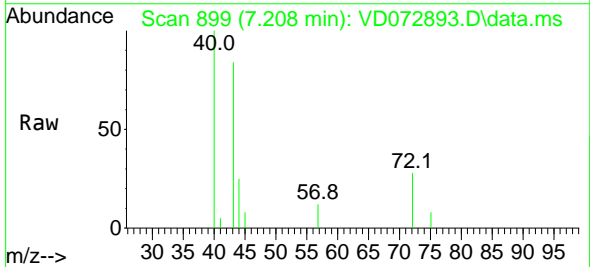


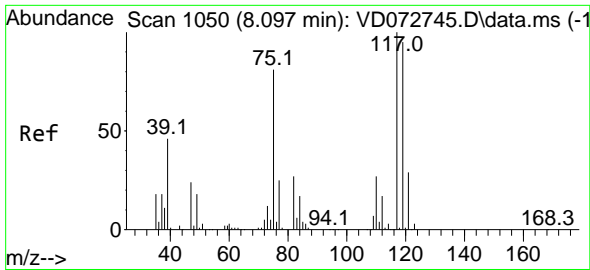
Tgt Ion: 75 Resp: 3050
 Ion Ratio Lower Upper
 75 100
 110 0.0 16.4 49.1#
 77 0.0 24.2 36.2#



#37
 Ethyl Acetate
 Concen: 26.479 ug/l
 RT: 7.208 min Scan# 899
 Delta R.T. -0.083 min
 Lab File: VD072893.D
 Acq: 09 May 2022 16:25

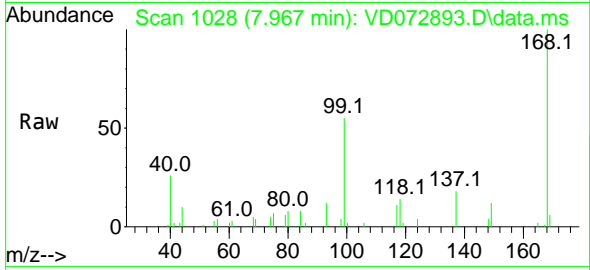
Tgt Ion: 43 Resp: 7973
 Ion Ratio Lower Upper
 43 100
 61 0.0 9.8 14.8#
 70 0.0 6.9 10.3#





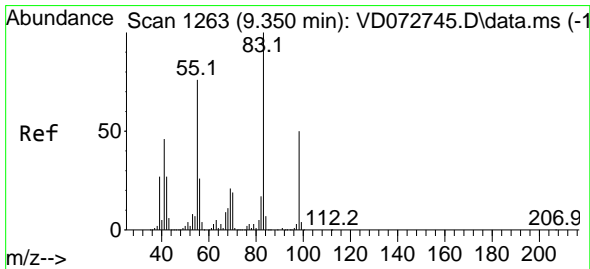
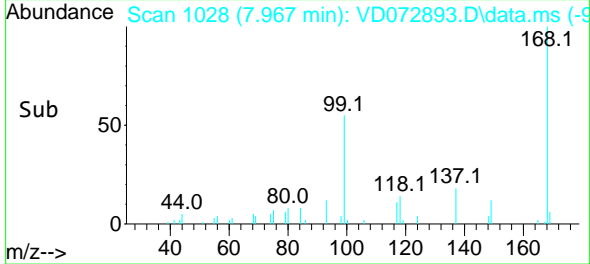
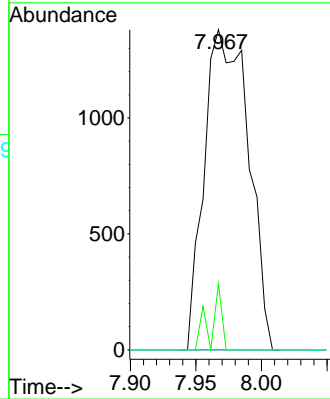
#38
 Carbon Tetrachloride
 Concen: 4.743 ug/l
 RT: 7.967 min Scan# 1050
 Delta R.T. -0.130 min
 Lab File: VD072893.D
 Acq: 09 May 2022 16:25

Instrument : MSVOA_D
 ClientSampleId : WC-14B-5-GRRE



Tgt Ion: 117 Resp: 3225

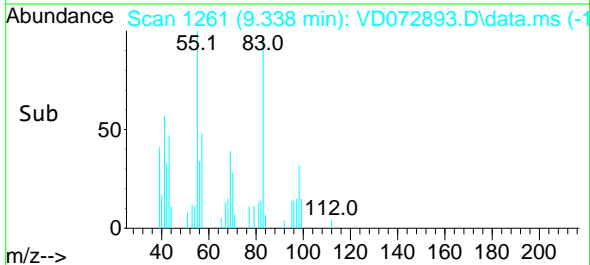
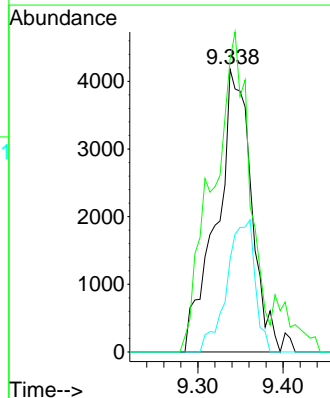
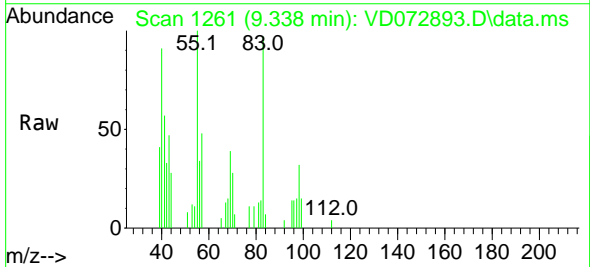
Ion	Ratio	Lower	Upper
117	100		
119	20.6	75.8	113.6#
121	0.0	24.5	36.7#

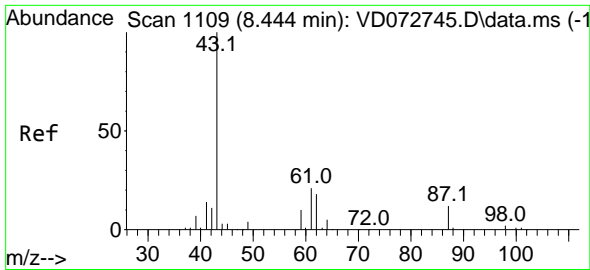


#39
 Methylcyclohexane
 Concen: 15.578 ug/l
 RT: 9.338 min Scan# 1261
 Delta R.T. -0.012 min
 Lab File: VD072893.D
 Acq: 09 May 2022 16:25

Tgt Ion: 83 Resp: 11835

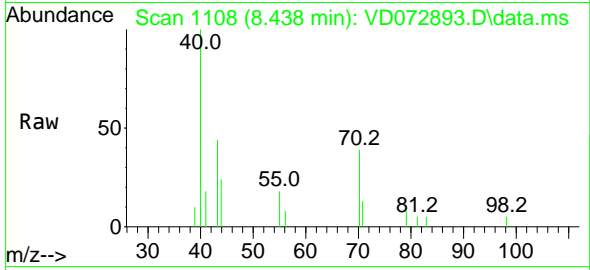
Ion	Ratio	Lower	Upper
83	100		
55	103.6	63.2	94.8#
98	32.8	38.2	57.4#



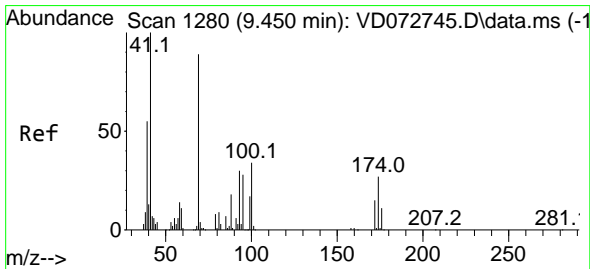
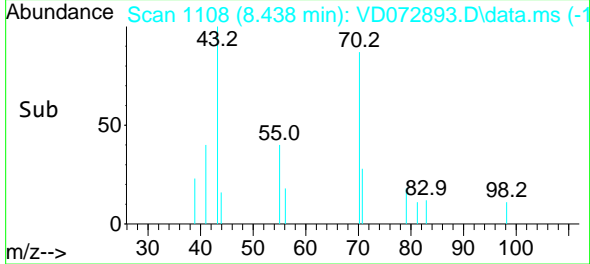
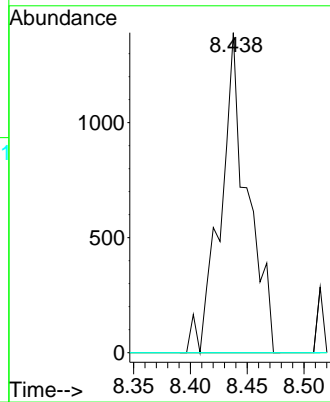


#43
 Isopropyl Acetate
 Concen: 4.137 ug/l
 RT: 8.438 min Scan# 1109
 Delta R.T. -0.006 min
 Lab File: VD072893.D
 Acq: 09 May 2022 16:25

Instrument : MSVOA_D
 ClientSampleId : WC-14B-5-GRRE

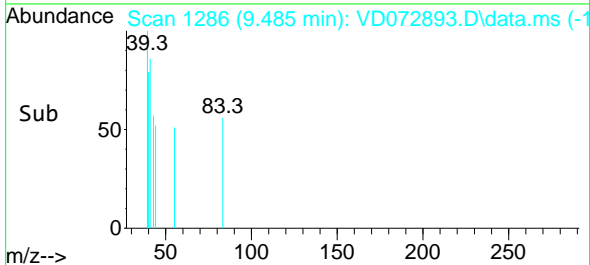
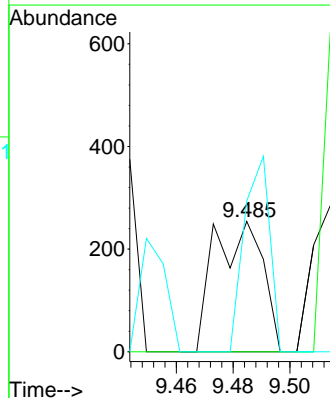
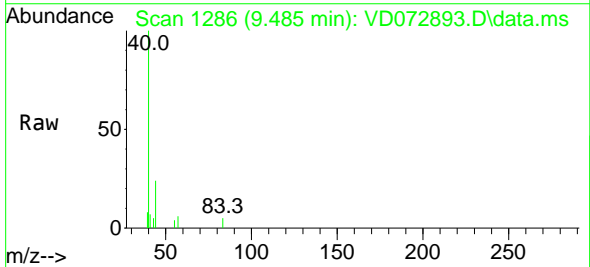


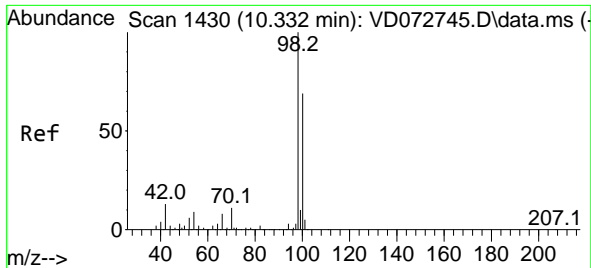
Tgt Ion: 43 Resp: 2299
 Ion Ratio Lower Upper
 43 100
 61 0.0 22.4 33.6#
 87 0.0 8.7 13.1#



#48
 Methyl methacrylate
 Concen: 1.100 ug/l
 RT: 9.485 min Scan# 1286
 Delta R.T. 0.035 min
 Lab File: VD072893.D
 Acq: 09 May 2022 16:25

Tgt Ion: 41 Resp: 299
 Ion Ratio Lower Upper
 41 100
 69 0.0 56.7 85.1#
 39 79.6 42.7 64.1#

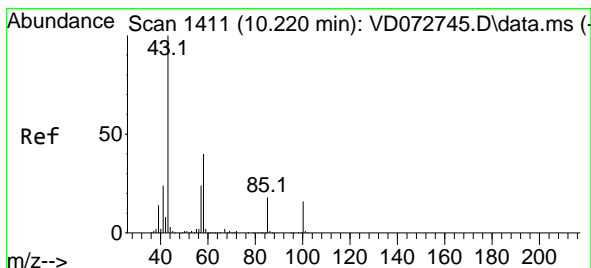
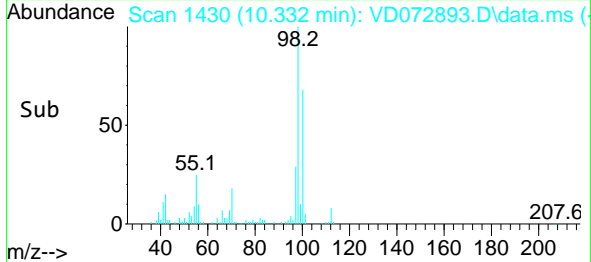
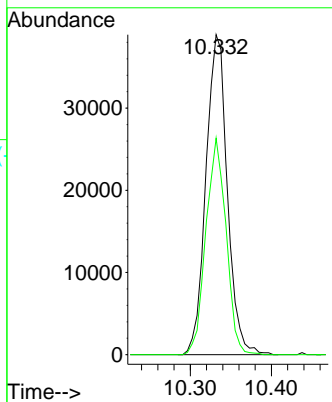
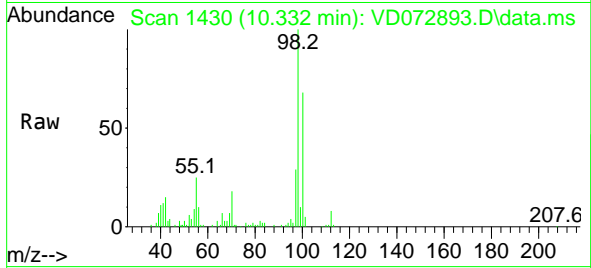




#50
 Toluene-d8
 Concen: 49.359 ug/l
 RT: 10.332 min Scan# 1412
 Delta R.T. -0.000 min
 Lab File: VD072893.D
 Acq: 09 May 2022 16:25

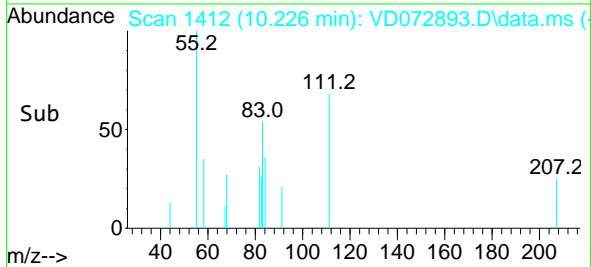
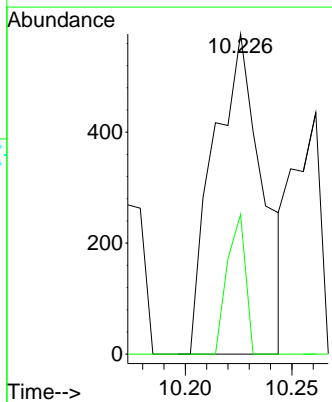
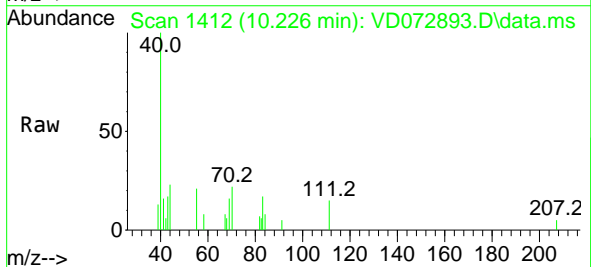
Instrument : MSVOA_D
 ClientSampleId : WC-14B-5-GRRE

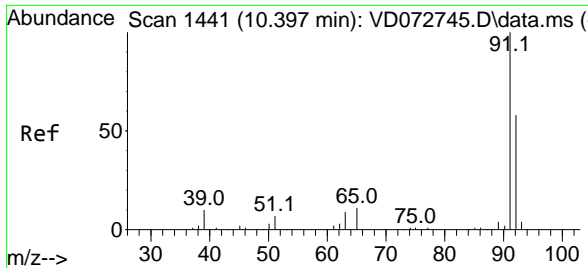
Tgt Ion: 98 Resp: 71321
 Ion Ratio Lower Upper
 98 100
 100 63.9 52.4 78.6



#51
 4-Methyl-2-Pentanone
 Concen: 3.189 ug/l
 RT: 10.226 min Scan# 1412
 Delta R.T. 0.006 min
 Lab File: VD072893.D
 Acq: 09 May 2022 16:25

Tgt Ion: 43 Resp: 921
 Ion Ratio Lower Upper
 43 100
 58 16.3 28.6 43.0#

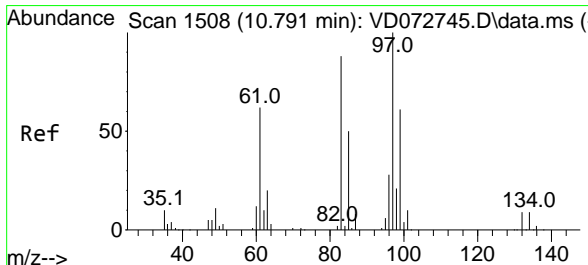
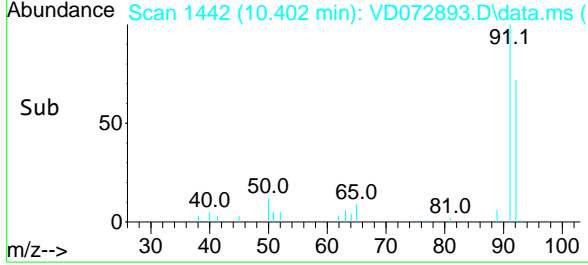
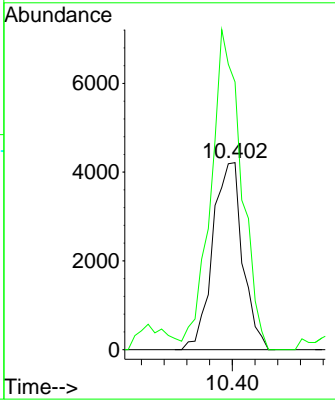
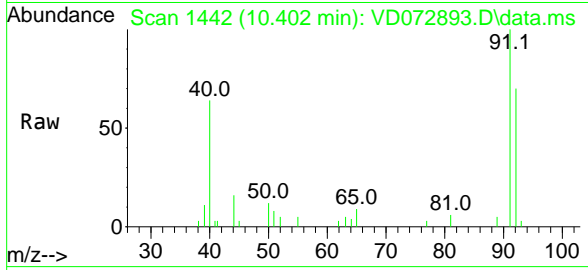




#52
 Toluene
 Concen: 6.541 ug/l
 RT: 10.402 min Scan# 1442
 Delta R.T. 0.005 min
 Lab File: VD072893.D
 Acq: 09 May 2022 16:25

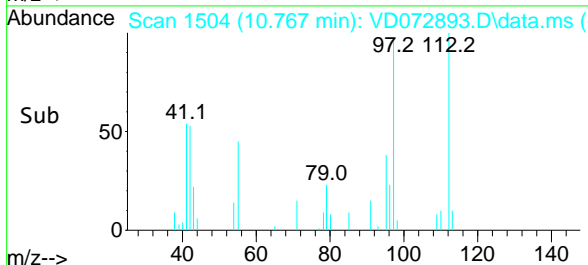
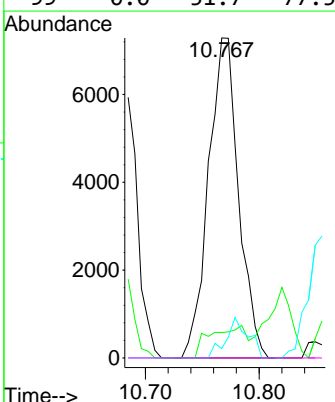
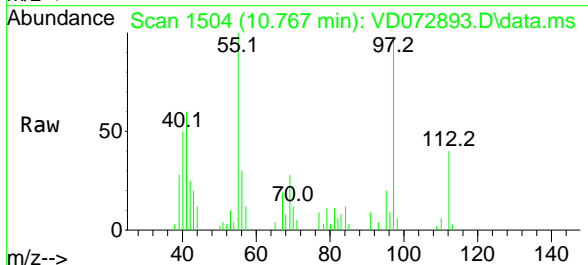
Instrument : MSVOA_D
 ClientSampleId : WC-14B-5-GRRE

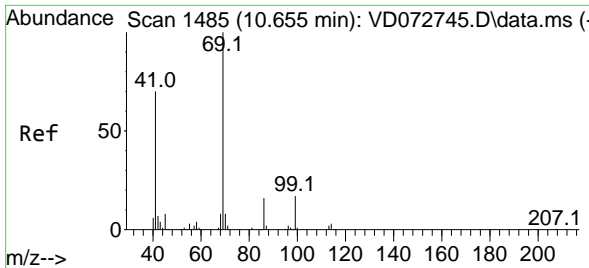
Tgt Ion: 92 Resp: 7718
 Ion Ratio Lower Upper
 92 100
 91 174.7 139.6 209.4



#55
 1,1,2-Trichloroethane
 Concen: 36.215 ug/l
 RT: 10.767 min Scan# 1504
 Delta R.T. -0.024 min
 Lab File: VD072893.D
 Acq: 09 May 2022 16:25

Tgt Ion: 97 Resp: 13415
 Ion Ratio Lower Upper
 97 100
 83 7.9 69.0 103.4#
 85 2.9 42.6 63.8#
 99 0.0 51.7 77.5#



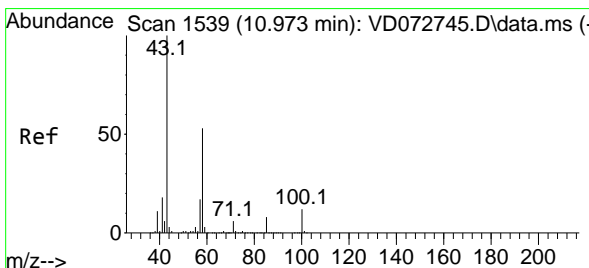
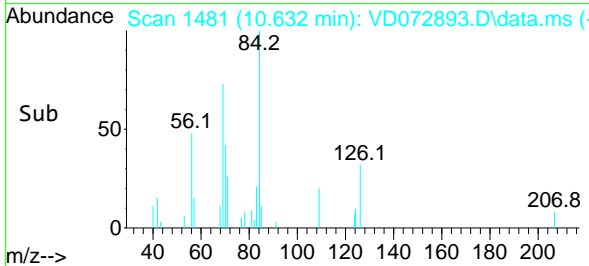
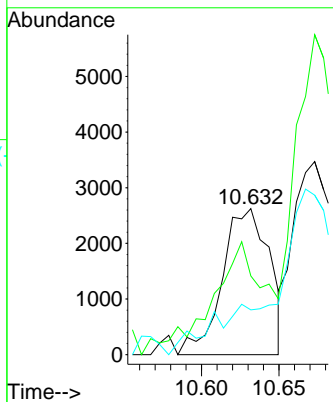
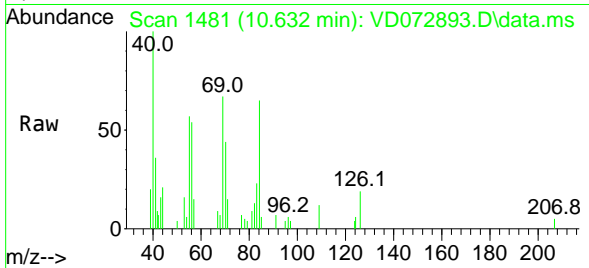


#56
 Ethyl methacrylate
 Concen: 12.730 ug/l
 RT: 10.632 min Scan# 1481
 Delta R.T. -0.023 min
 Lab File: VD072893.D
 Acq: 09 May 2022 16:25

Instrument : MSVOA_D
 ClientSampleId : WC-14B-5-GRRE

Tgt Ion: 69 Resp: 5552

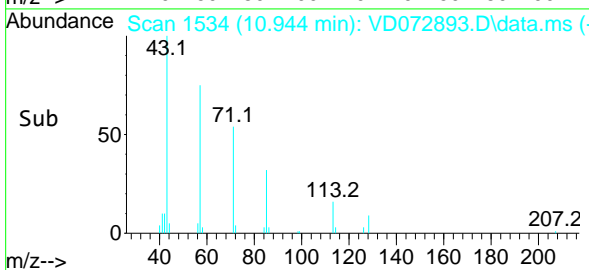
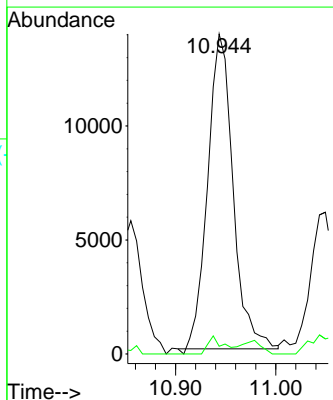
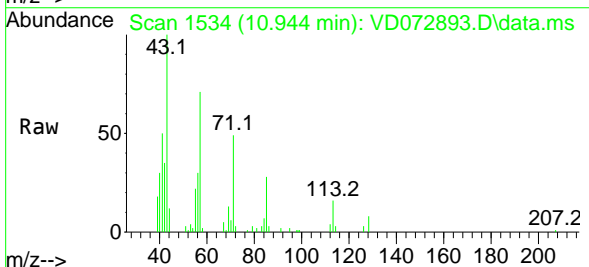
Ion	Ratio	Lower	Upper
69	100		
41	73.2	63.0	94.6
39	0.0	33.8	50.8#

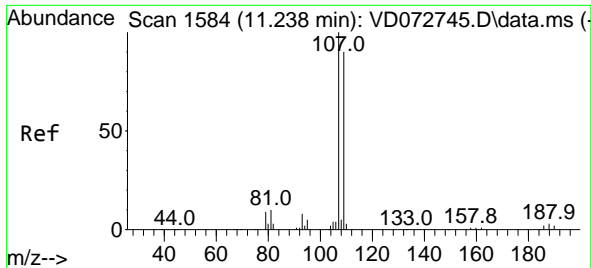


#59
 2-Hexanone
 Concen: 124.949 ug/l
 RT: 10.944 min Scan# 1534
 Delta R.T. -0.029 min
 Lab File: VD072893.D
 Acq: 09 May 2022 16:25

Tgt Ion: 43 Resp: 24280

Ion	Ratio	Lower	Upper
43	100		
58	3.3	25.3	75.9#

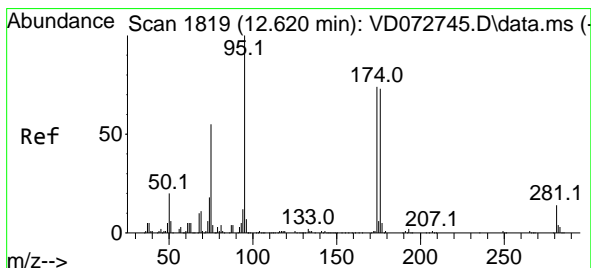
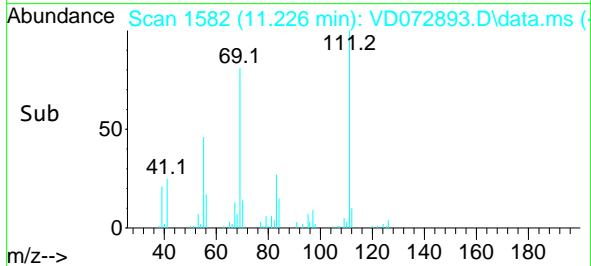
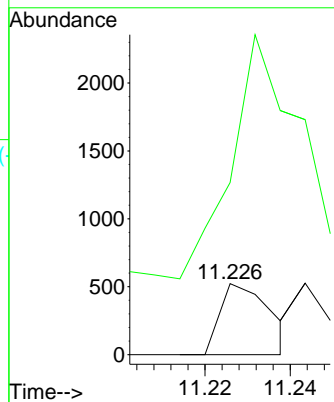
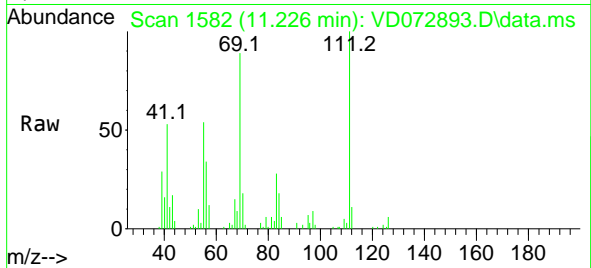




#61
 1,2-Dibromoethane
 Concen: 1.190 ug/l
 RT: 11.226 min Scan# 1111
 Delta R.T. -0.012 min
 Lab File: VD072893.D
 Acq: 09 May 2022 16:25

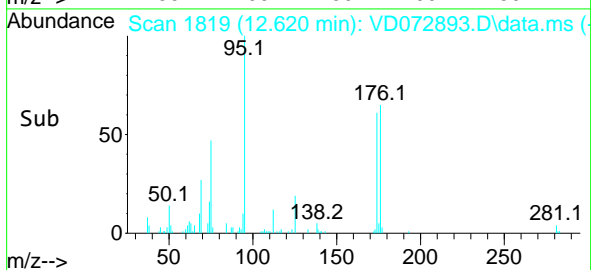
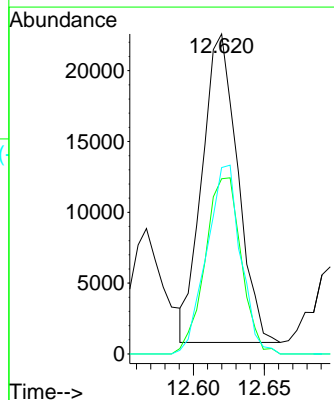
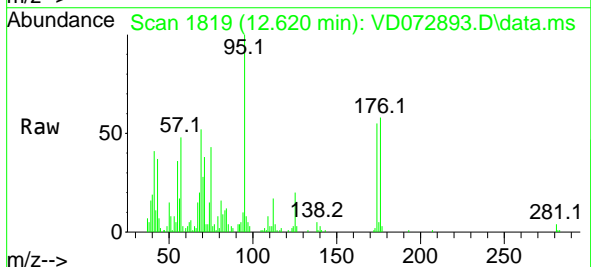
Instrument : MSVOA_D
 ClientSampleId : WC-14B-5-GRRE

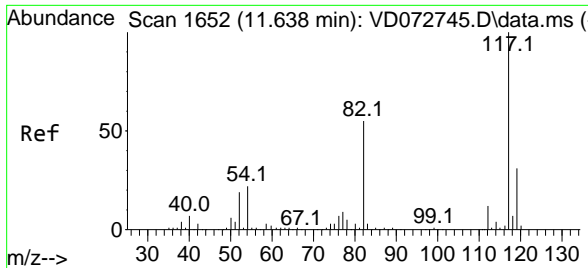
Tgt Ion:107 Resp: 429
 Ion Ratio Lower Upper
 107 100
 109 865.3 74.2 111.4#



#62
 4-Bromofluorobenzene
 Concen: 70.086 ug/l
 RT: 12.620 min Scan# 1819
 Delta R.T. -0.000 min
 Lab File: VD072893.D
 Acq: 09 May 2022 16:25

Tgt Ion: 95 Resp: 37761
 Ion Ratio Lower Upper
 95 100
 174 58.2 0.0 152.8
 176 58.7 0.0 145.4

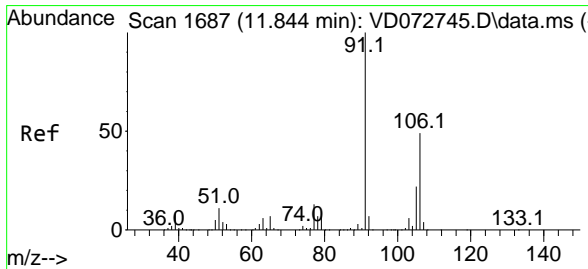
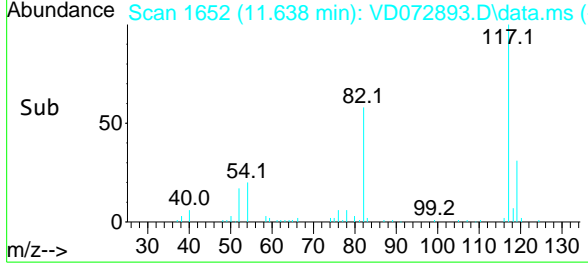
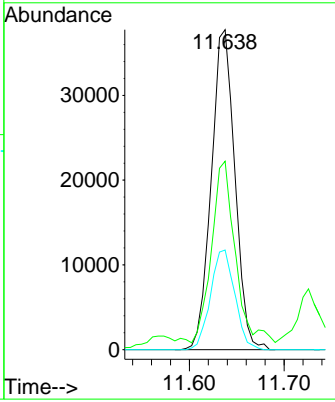
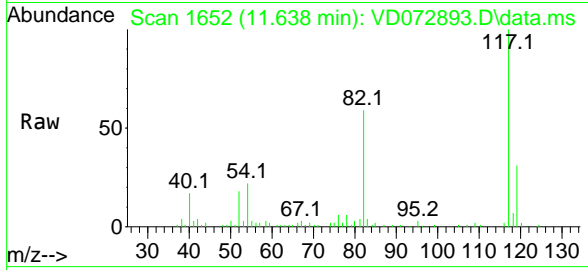




#63
 Chlorobenzene-d5
 Concen: 50.000 ug/l
 RT: 11.638 min Scan# 117
 Delta R.T. -0.000 min
 Lab File: VD072893.D
 Acq: 09 May 2022 16:25

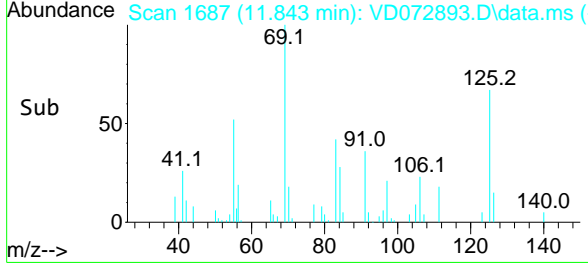
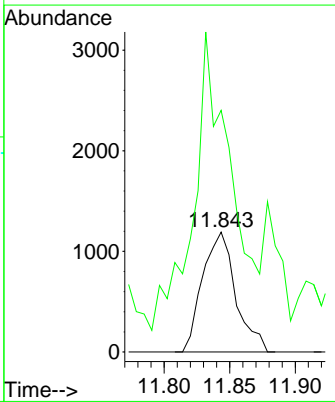
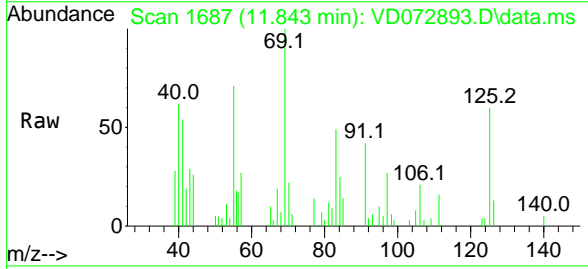
Instrument : MSVOA_D
 ClientSampleId : WC-14B-5-GRRE

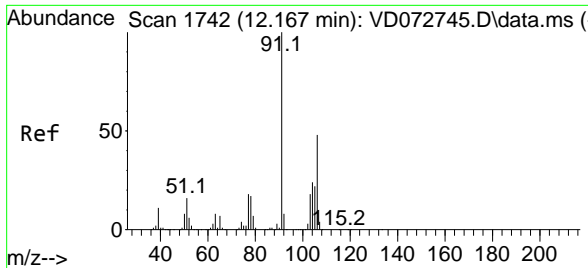
Tgt Ion	Resp	Ion Ratio	Lower	Upper
117	65387	100		
82		56.6	45.3	67.9
119		31.1	26.6	40.0



#68
 m/p-Xylenes
 Concen: 2.081 ug/l
 RT: 11.843 min Scan# 1687
 Delta R.T. -0.001 min
 Lab File: VD072893.D
 Acq: 09 May 2022 16:25

Tgt Ion	Resp	Ion Ratio	Lower	Upper
106	2098	100		
91		278.0	163.7	245.5

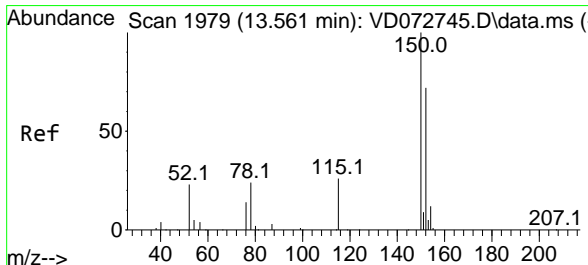
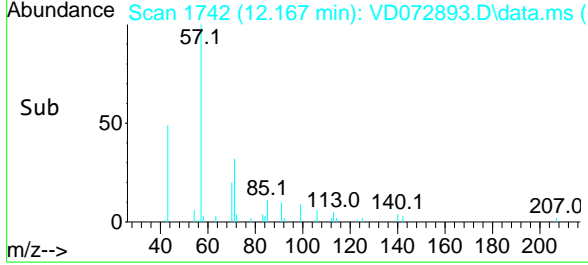
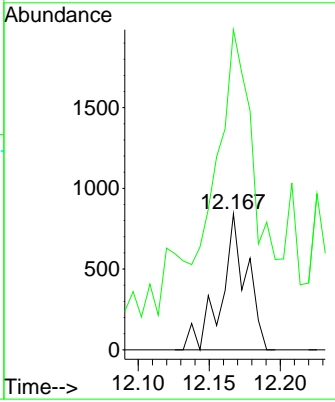
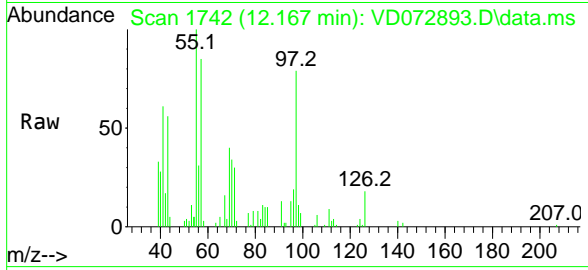




#69
 o-Xylene
 Concen: 1.115 ug/l
 RT: 12.167 min Scan# 11
 Delta R.T. 0.000 min
 Lab File: VD072893.D
 Acq: 09 May 2022 16:25

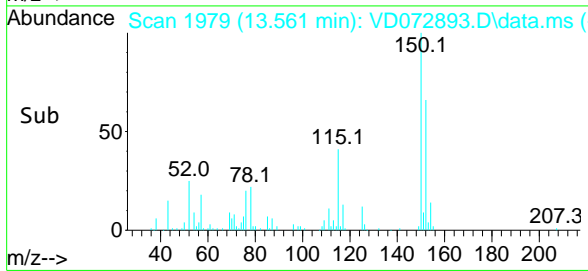
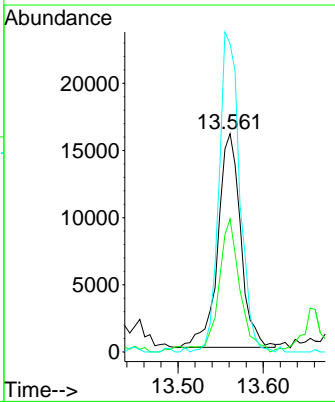
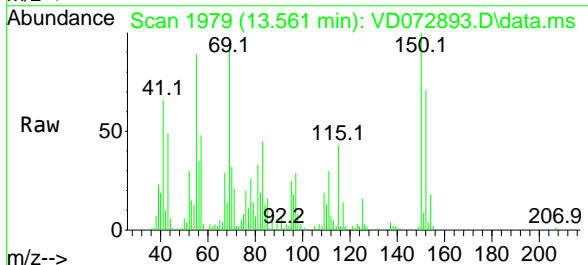
Instrument : MSVOA_D
 ClientSampleId : WC-14B-5-GRRE

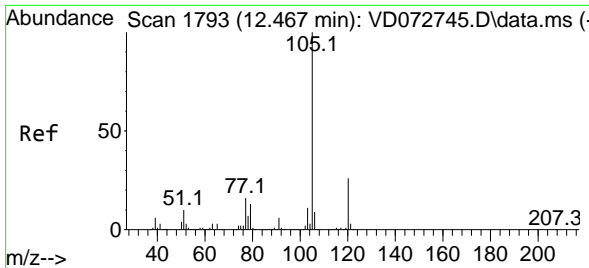
Tgt Ion:106 Resp: 1050
 Ion Ratio Lower Upper
 106 100
 91 297.9 110.4 331.2



#72
 1,4-Dichlorobenzene-d4
 Concen: 50.000 ug/l
 RT: 13.561 min Scan# 1979
 Delta R.T. 0.000 min
 Lab File: VD072893.D
 Acq: 09 May 2022 16:25

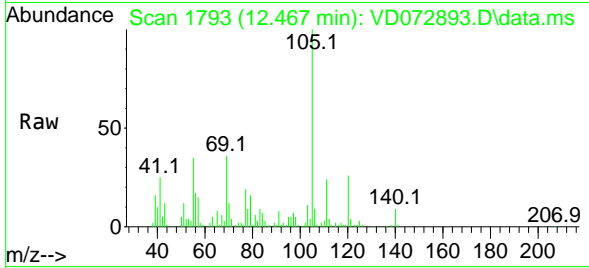
Tgt Ion:152 Resp: 29598
 Ion Ratio Lower Upper
 152 100
 115 56.2 31.3 93.8
 150 136.1 0.0 348.6



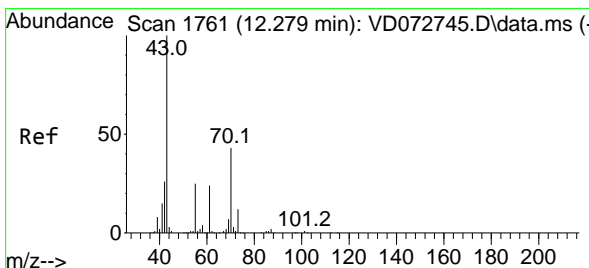
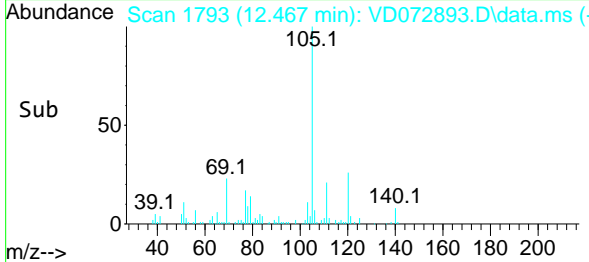
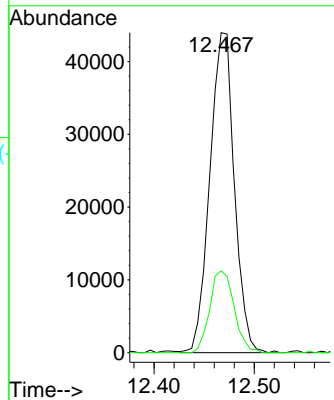


#73
 Isopropylbenzene
 Concen: 32.456 ug/l
 RT: 12.467 min Scan# 1793
 Delta R.T. -0.000 min
 Lab File: VD072893.D
 Acq: 09 May 2022 16:25

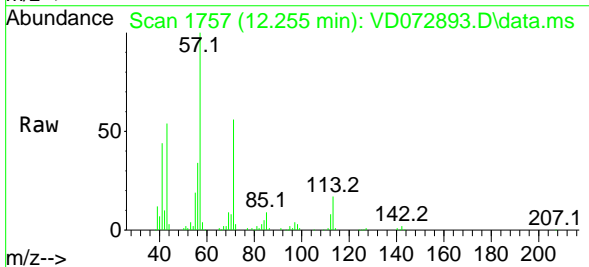
Instrument : MSVOA_D
 ClientSampleId : WC-14B-5-GRRE



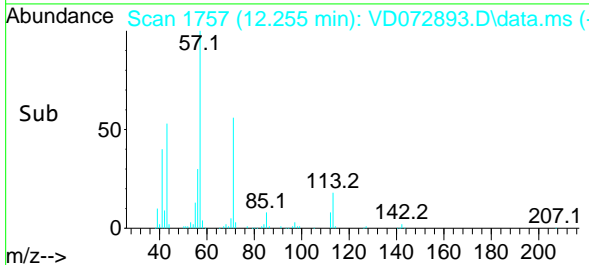
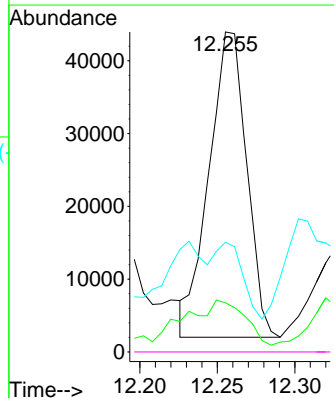
Tgt Ion:105 Resp: 74740
 Ion Ratio Lower Upper
 105 100
 120 25.4 13.0 38.9

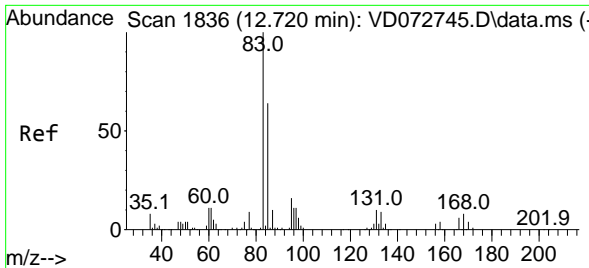


#74
 N-ethyl acetate
 Concen: 123.504 ug/l
 RT: 12.255 min Scan# 1757
 Delta R.T. -0.024 min
 Lab File: VD072893.D
 Acq: 09 May 2022 16:25



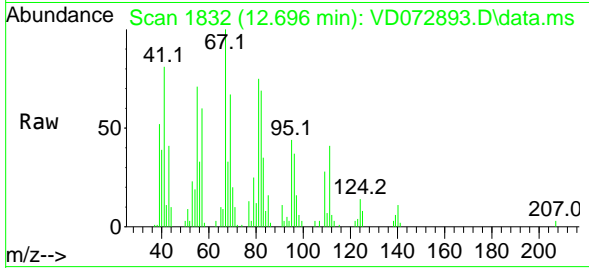
Tgt Ion: 43 Resp: 70826
 Ion Ratio Lower Upper
 43 100
 70 23.1 31.3 46.9#
 55 0.0 20.0 30.0#
 61 0.0 17.8 26.8#



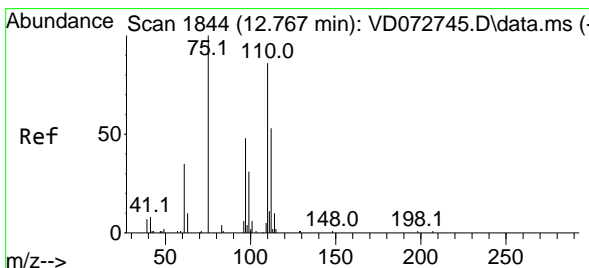
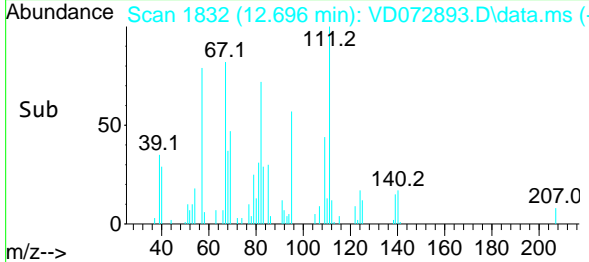
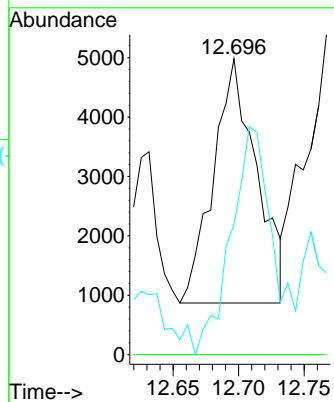


#75
 1,1,2,2-Tetrachloroethane
 Concen: 20.284 ug/l
 RT: 12.696 min Scan# 1819
 Delta R.T. -0.024 min
 Lab File: VD072893.D
 Acq: 09 May 2022 16:25

Instrument :
 MSVOA_D
 ClientSampleId :
 WC-14B-5-GRRE

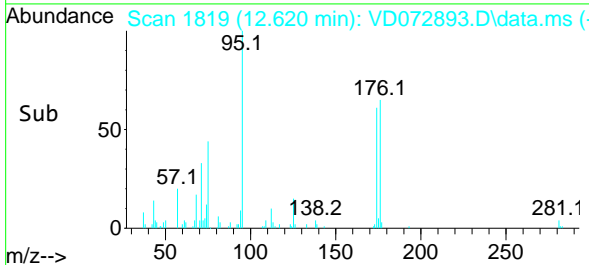
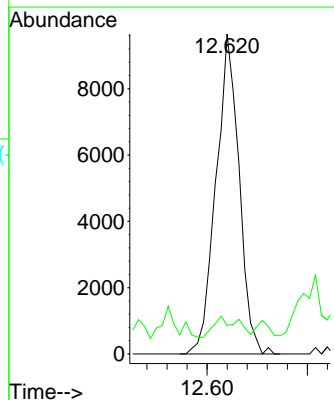
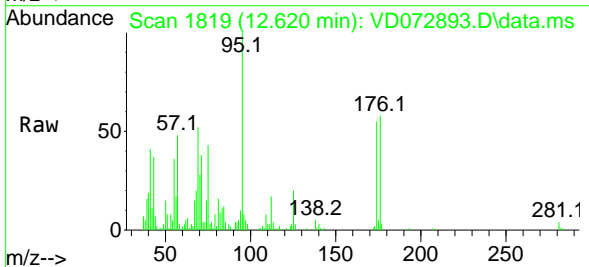


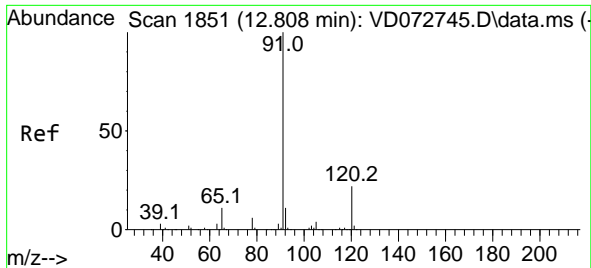
Tgt Ion: 83 Resp: 9429
 Ion Ratio Lower Upper
 83 100
 131 0.0 5.0 14.9#
 85 89.1 32.6 98.0



#76
 1,2,3-Trichloropropane
 Concen: 46.713 ug/l
 RT: 12.620 min Scan# 1819
 Delta R.T. -0.147 min
 Lab File: VD072893.D
 Acq: 09 May 2022 16:25

Tgt Ion: 75 Resp: 15417
 Ion Ratio Lower Upper
 75 100
 77 6.7 0.0 0.0#

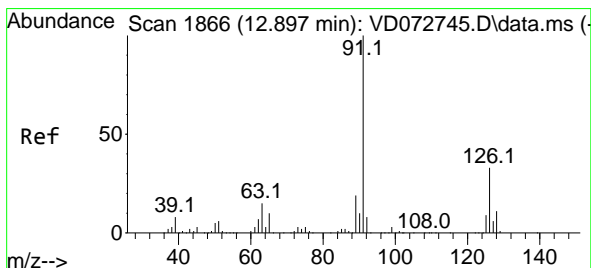
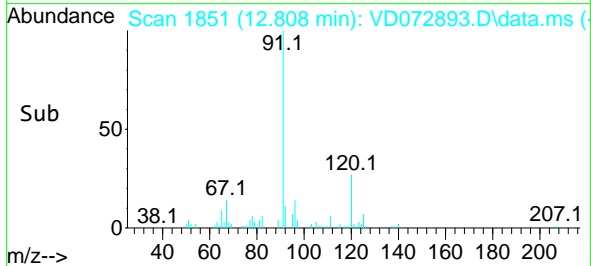
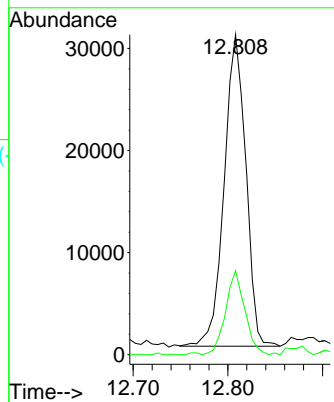
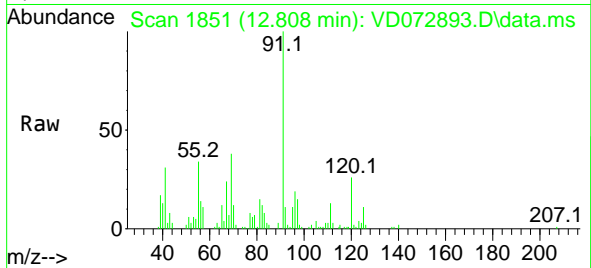




#78
 n-propylbenzene
 Concen: 16.718 ug/l
 RT: 12.808 min Scan# 1851
 Delta R.T. 0.000 min
 Lab File: VD072893.D
 Acq: 09 May 2022 16:25

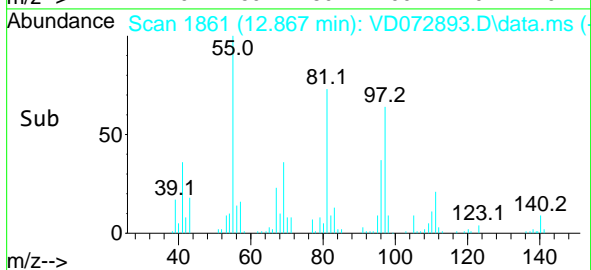
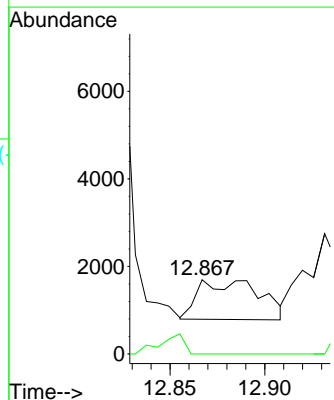
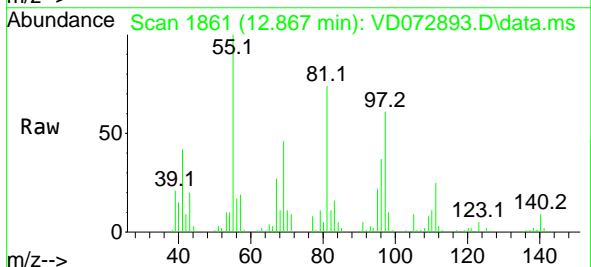
Instrument : MSVOA_D
 ClientSampleId : WC-14B-5-GRRE

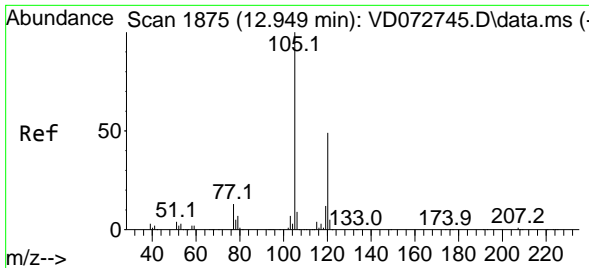
Tgt Ion: 91 Resp: 48521
 Ion Ratio Lower Upper
 91 100
 120 24.1 10.9 32.9



#79
 2-Chlorotoluene
 Concen: 1.197 ug/l
 RT: 12.867 min Scan# 1861
 Delta R.T. -0.030 min
 Lab File: VD072893.D
 Acq: 09 May 2022 16:25

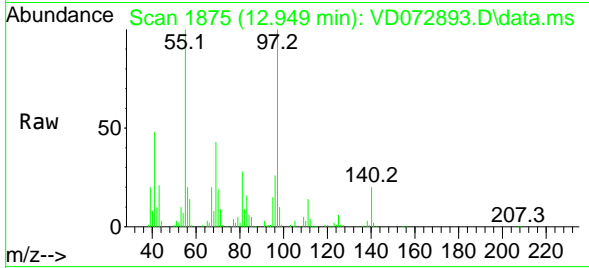
Tgt Ion: 91 Resp: 2029
 Ion Ratio Lower Upper
 91 100
 126 20.0 16.2 48.6



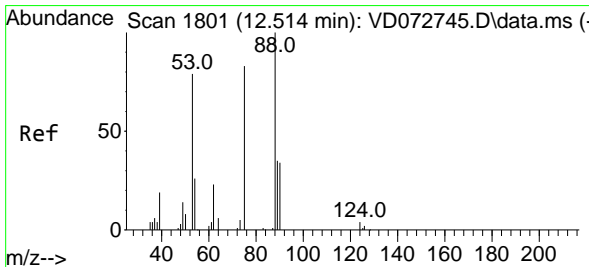
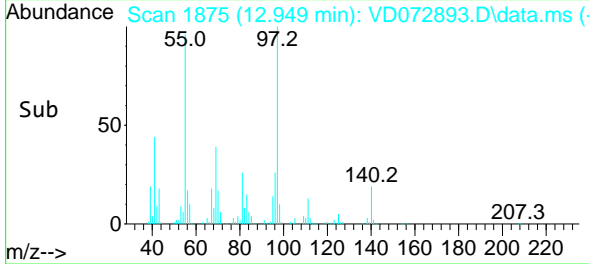
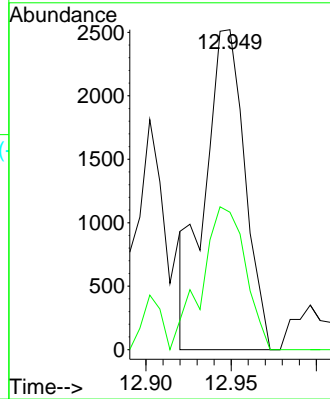


#80
 1,3,5-Trimethylbenzene
 Concen: 2.108 ug/l
 RT: 12.949 min Scan# 1793
 Delta R.T. 0.000 min
 Lab File: VD072893.D
 Acq: 09 May 2022 16:25

Instrument : MSVOA_D
 ClientSampleId : WC-14B-5-GRRE

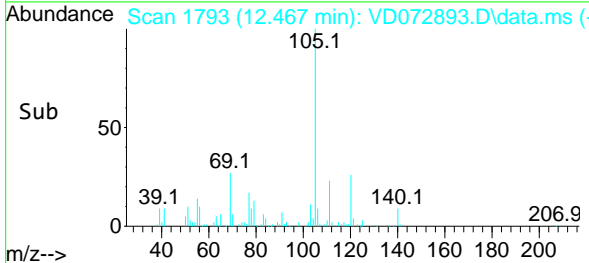
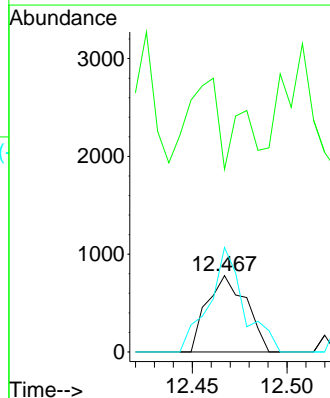
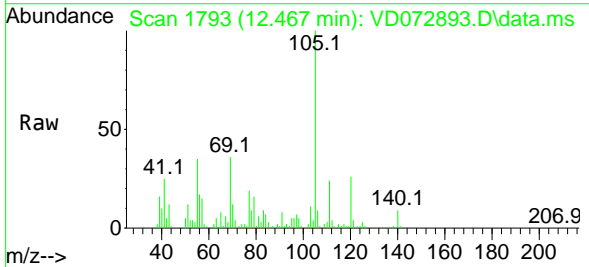


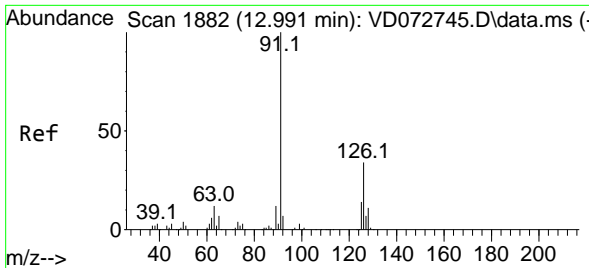
Tgt Ion: 105 Resp: 4116
 Ion Ratio Lower Upper
 105 100
 120 48.7 24.3 72.8



#81
 trans-1,4-Dichloro-2-butene
 Concen: 7.860 ug/l
 RT: 12.467 min Scan# 1793
 Delta R.T. -0.047 min
 Lab File: VD072893.D
 Acq: 09 May 2022 16:25

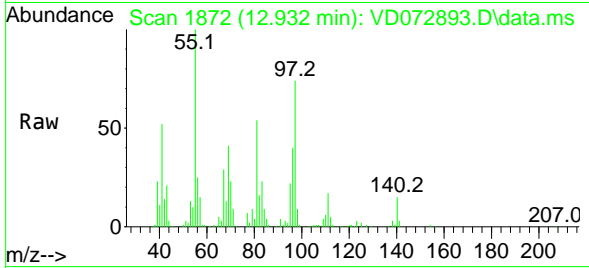
Tgt Ion: 75 Resp: 1128
 Ion Ratio Lower Upper
 75 100
 53 166.4 86.5 129.7#
 89 120.7 33.9 50.9#



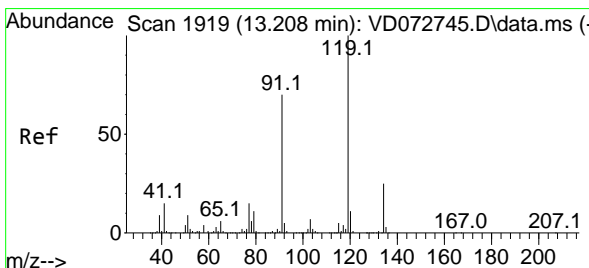
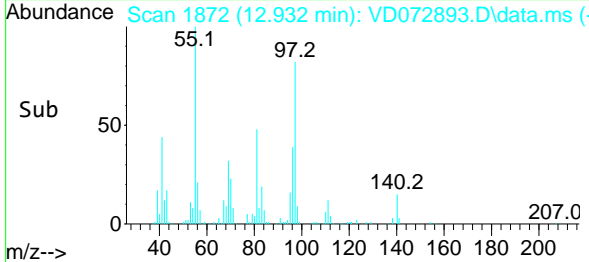
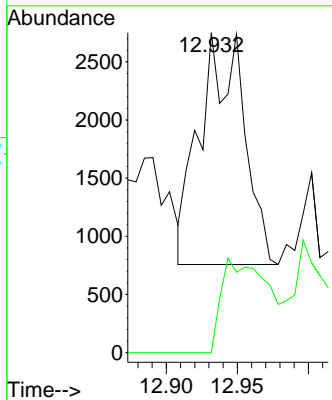


#82
 4-Chlorotoluene
 Concen: 2.399 ug/l
 RT: 12.932 min Scan# 1872
 Delta R.T. -0.059 min
 Lab File: VD072893.D
 Acq: 09 May 2022 16:25

Instrument : MSVOA_D
 ClientSampleId : WC-14B-5-GRRE

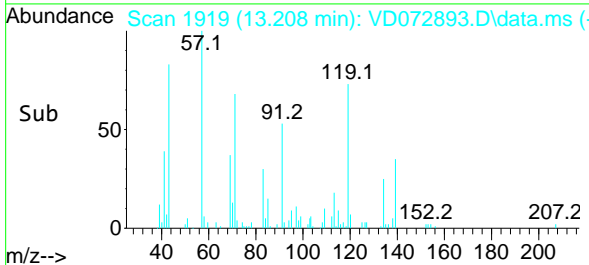
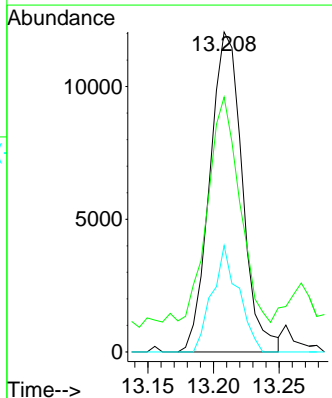
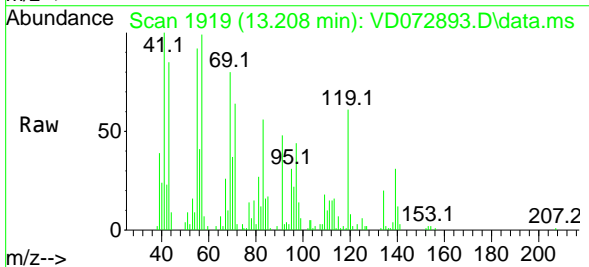


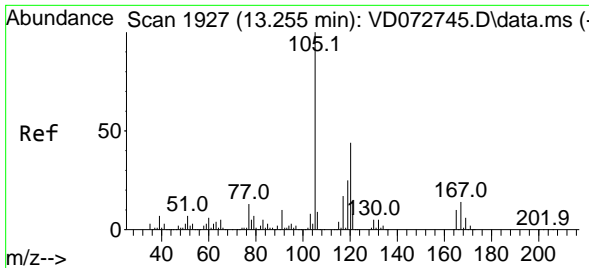
Tgt Ion: 91 Resp: 4249
 Ion Ratio Lower Upper
 91 100
 126 42.1 16.5 49.5



#83
 tert-Butylbenzene
 Concen: 12.506 ug/l
 RT: 13.208 min Scan# 1919
 Delta R.T. 0.000 min
 Lab File: VD072893.D
 Acq: 09 May 2022 16:25

Tgt Ion: 119 Resp: 20761
 Ion Ratio Lower Upper
 119 100
 91 73.7 34.8 104.5
 134 26.9 13.3 39.9

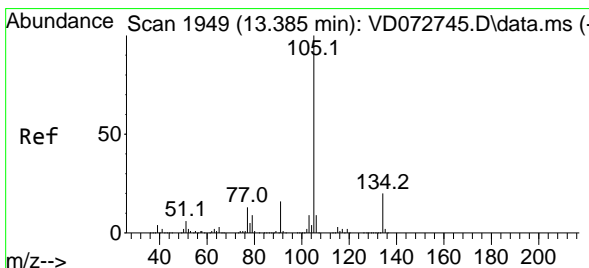
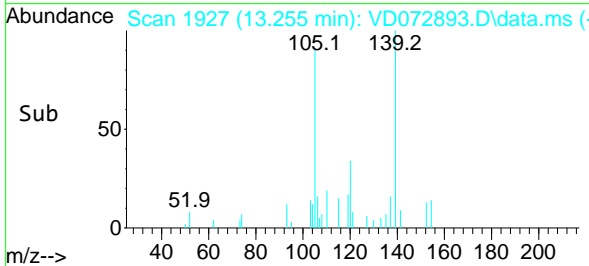
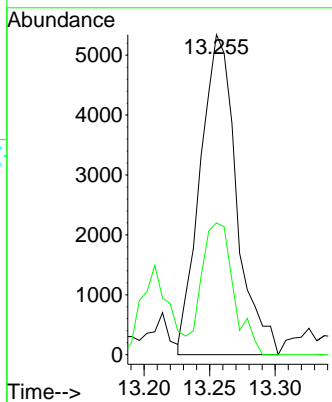
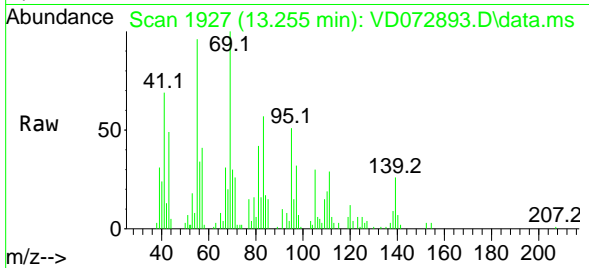




#84
 1,2,4-Trimethylbenzene
 Concen: 5.283 ug/l
 RT: 13.255 min Scan# 1927
 Delta R.T. 0.000 min
 Lab File: VD072893.D
 Acq: 09 May 2022 16:25

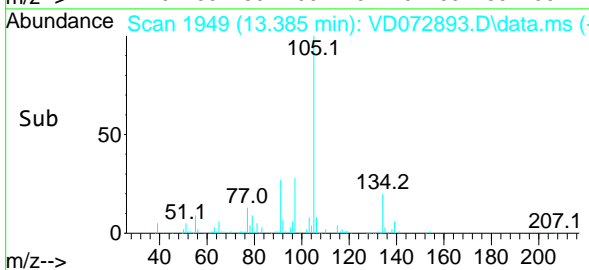
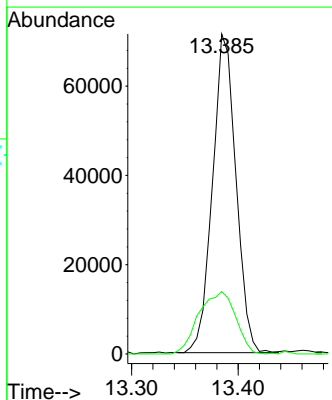
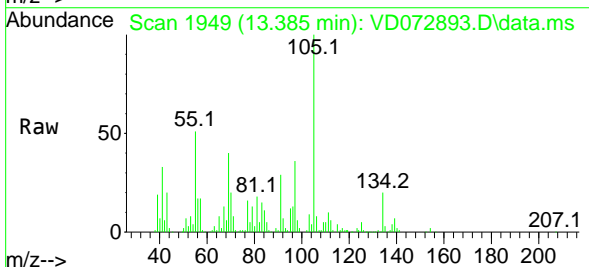
Instrument : MSVOA_D
 ClientSampleId : WC-14B-5-GRRE

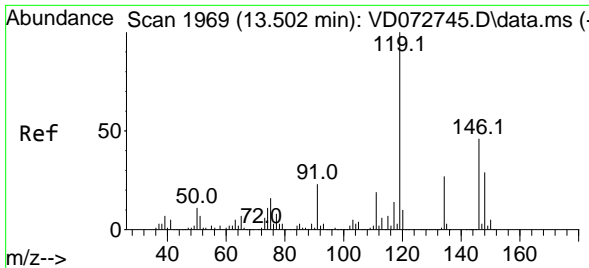
Tgt Ion:105 Resp: 10312
 Ion Ratio Lower Upper
 105 100
 120 36.2 22.3 66.8



#85
 sec-Butylbenzene
 Concen: 43.525 ug/l
 RT: 13.385 min Scan# 1949
 Delta R.T. -0.000 min
 Lab File: VD072893.D
 Acq: 09 May 2022 16:25

Tgt Ion:105 Resp: 108978
 Ion Ratio Lower Upper
 105 100
 134 30.8 9.8 29.3#

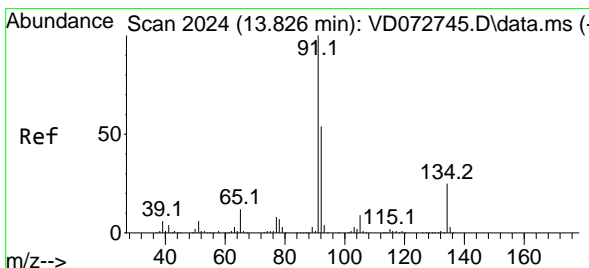
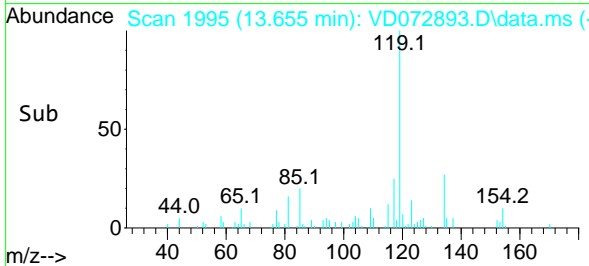
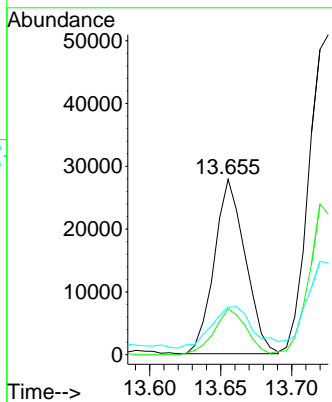
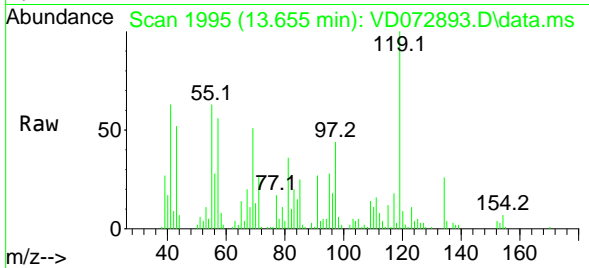




#86
 p-Isopropyltoluene
 Concen: 20.547 ug/l
 RT: 13.655 min Scan# 1969
 Delta R.T. 0.153 min
 Lab File: VD072893.D
 Acq: 09 May 2022 16:25

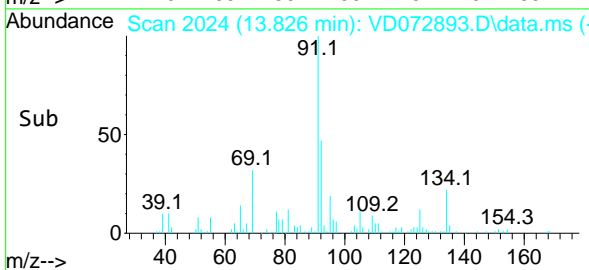
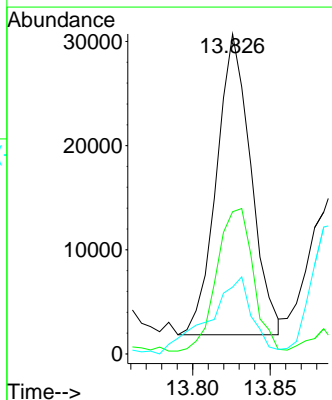
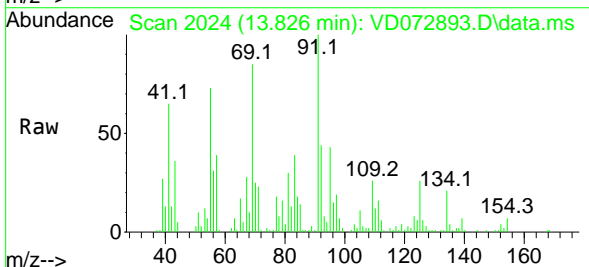
Instrument : MSVOA_D
 ClientSampleId : WC-14B-5-GRRE

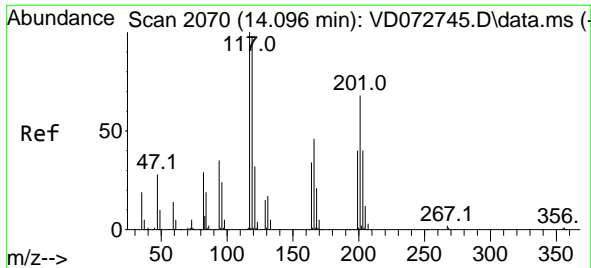
Tgt Ion	Resp	Lower	Upper
119	42180	100	100
134	27.4	12.9	38.6
91	31.4	12.1	36.3



#89
 n-Butylbenzene
 Concen: 22.345 ug/l
 RT: 13.826 min Scan# 2024
 Delta R.T. -0.000 min
 Lab File: VD072893.D
 Acq: 09 May 2022 16:25

Tgt Ion	Resp	Lower	Upper
91	44435	100	100
92	50.5	26.6	79.8
134	32.4	12.3	36.9

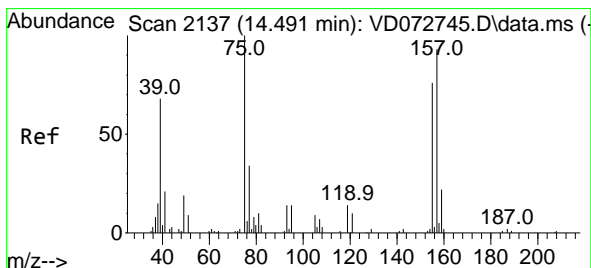
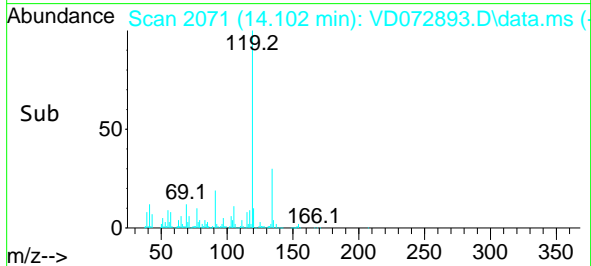
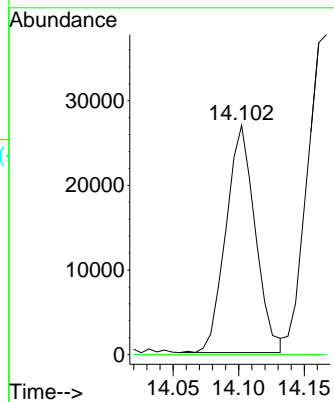
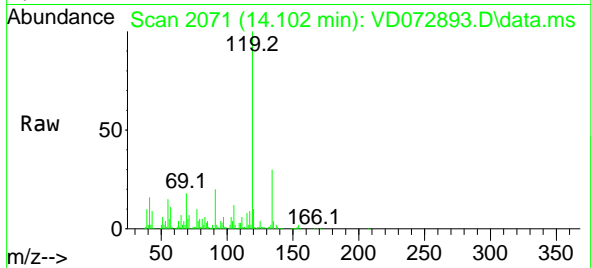




#90
 Hexachloroethane
 Concen: 99.277 ug/l
 RT: 14.102 min Scan# 2070
 Delta R.T. 0.006 min
 Lab File: VD072893.D
 Acq: 09 May 2022 16:25

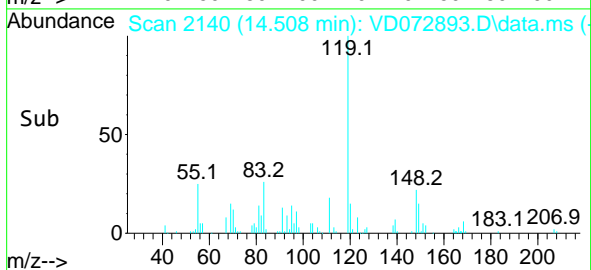
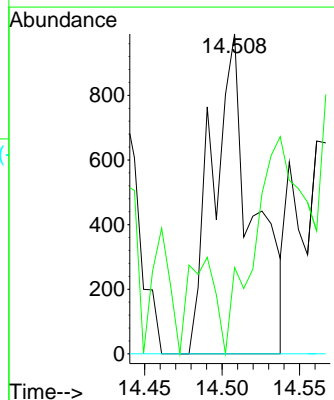
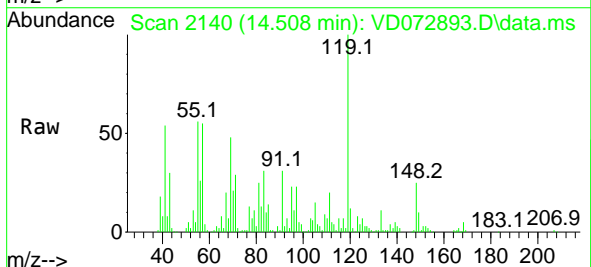
Instrument :
 MSVOA_D
 ClientSampleId :
 WC-14B-5-GRRE

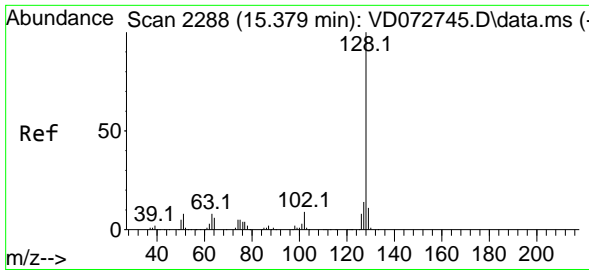
Tgt Ion:117 Resp: 41750
 Ion Ratio Lower Upper
 117 100
 201 0.0 33.4 100.2#



#92
 1,2-Dibromo-3-Chloropropane
 Concen: 24.455 ug/l
 RT: 14.508 min Scan# 2140
 Delta R.T. 0.017 min
 Lab File: VD072893.D
 Acq: 09 May 2022 16:25

Tgt Ion: 75 Resp: 1802
 Ion Ratio Lower Upper
 75 100
 155 19.6 36.8 110.3#
 157 0.0 48.4 145.0#

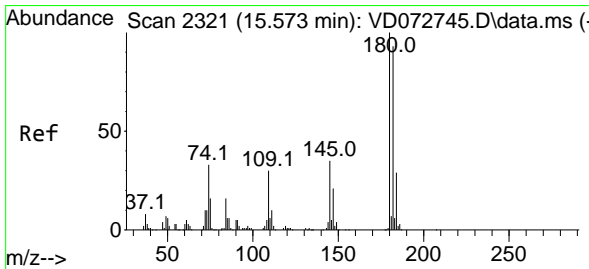
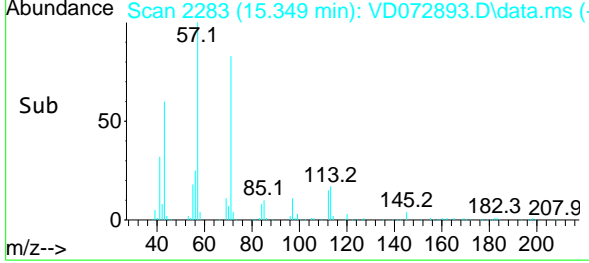
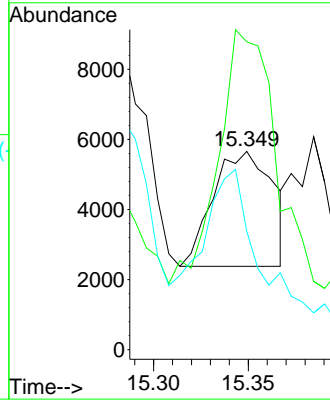
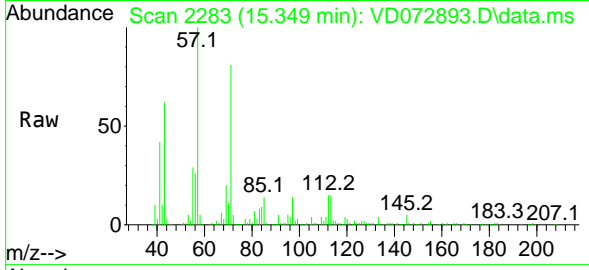




#95
 Naphthalene
 Concen: 6.870 ug/l
 RT: 15.349 min Scan# 2111
 Delta R.T. -0.030 min
 Lab File: VD072893.D
 Acq: 09 May 2022 16:25

Instrument : MSVOA_D
 ClientSampleId : WC-14B-5-GRRE

Tgt Ion	Resp	Lower	Upper
128	7182		
127	215.3	10.3	15.5#
129	127.3	8.4	12.6#



#96
 1,2,3-Trichlorobenzene
 Concen: 10.714 ug/l
 RT: 15.543 min Scan# 2316
 Delta R.T. -0.030 min
 Lab File: VD072893.D
 Acq: 09 May 2022 16:25

Tgt Ion	Resp	Lower	Upper
180	5400		
182	31.4	47.6	142.9#
145	735.6	17.1	51.3#

