

Data Path : Z:\VOASRV\HPCHEM1\MSVOA D\DATA\VD051219\
 Data File : VD062267.D
 Acq On : 12 May 2019 19:00
 Operator : FY/SY
 Sample : K2733-12
 Misc : 5.69µ/5mL/MSVOA D/SOIL
 ALS Vial : 17 Sample Multiplier: 1

Instrument :
 MSVOA_D
 ClientSampleId :
 P021-SS002-1218-01

Quant Time: May 15 05:26:27 2019
 Quant Method : Z:\VOASRV\HPCHEM1\MSVOA_D\METHOD\82D050719S.M
 Quant Title : SW846 8260
 QLast Update : Tue May 07 14:26:29 2019
 Response via : Initial Calibration

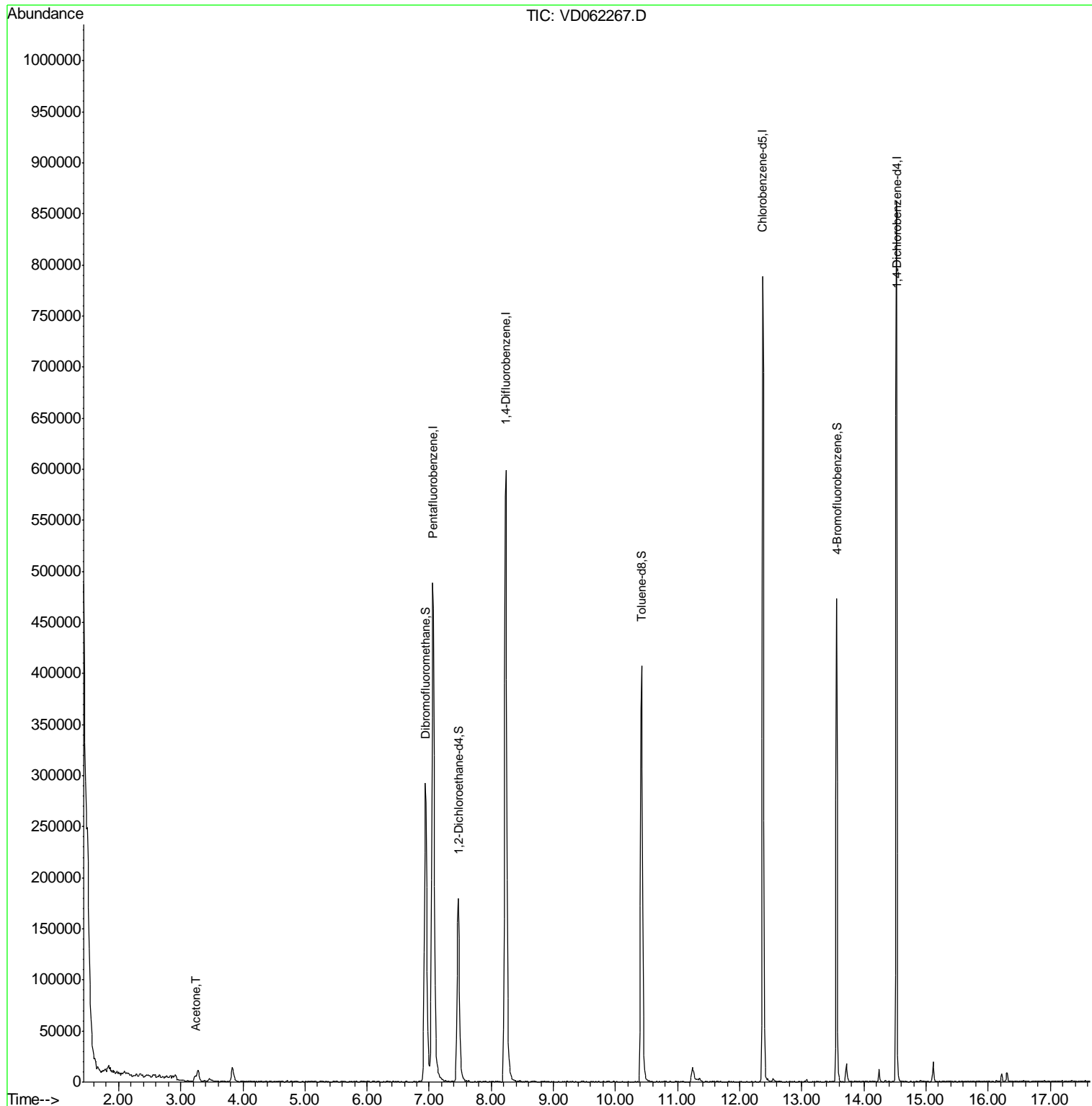
Internal Standards	R.T.	QIon	Response	Conc	Units	Dev(Min)
1) Pentafluorobenzene	7.07	168	455453	50.00	µg/l	0.05
34) 1,4-Difluorobenzene	8.24	114	642863	50.00	µg/l	0.05
63) Chlorobenzene-d5	12.37	117	426138	50.00	µg/l	0.02
72) 1,4-Dichlorobenzene-d4	14.53	152	186914	50.00	µg/l	0.02
System Monitoring Compounds						
33) 1,2-Dichloroethane-d4	7.47	65	204440	48.30	µg/l	0.05
Spiked Amount	50.000		Recovery	=	96.60%	
35) Dibromofluoromethane	6.94	113	259055	48.57	µg/l	0.05
Spiked Amount	50.000		Recovery	=	97.14%	
50) Toluene-d8	10.42	98	348261	27.08	µg/l	0.03
Spiked Amount	50.000		Recovery	=	54.16%	
62) 4-Bromofluorobenzene	13.56	95	139747	27.06	µg/l	0.02
Spiked Amount	50.000		Recovery	=	54.12%	
Target Compounds						
16) Acetone	3.24	43	13069	14.724	µg/l #	81

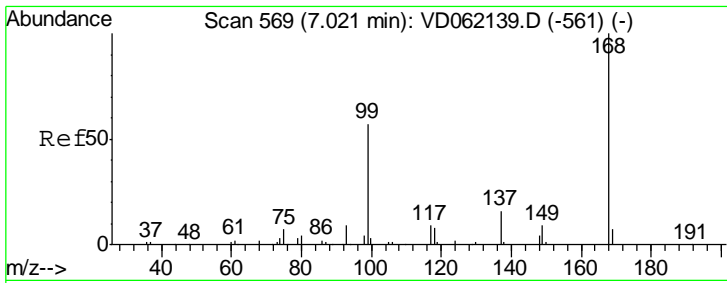
(#) = qualifier out of range (m) = manual integration (+) = signals summed

Data Path : Z:\VOASRV\HPCHEM1\MSVOA D\DATA\VD051219\
 Data File : VD062267.D
 Acq On : 12 May 2019 19:00
 Operator : FY/SY
 Sample : K2733-12
 Misc : 5.69µ/5mL/MSVOA D/SOIL
 ALS Vial : 17 Sample Multiplier: 1

Instrument :
 MSVOA_D
 ClientSampleId :
 P021-SS002-1218-01

Quant Time: May 15 05:26:27 2019
 Quant Method : Z:\VOASRV\HPCHEM1\MSVOA_D\METHOD\82D050719S.M
 Quant Title : SW846 8260
 QLast Update : Tue May 07 14:26:29 2019
 Response via : Initial Calibration

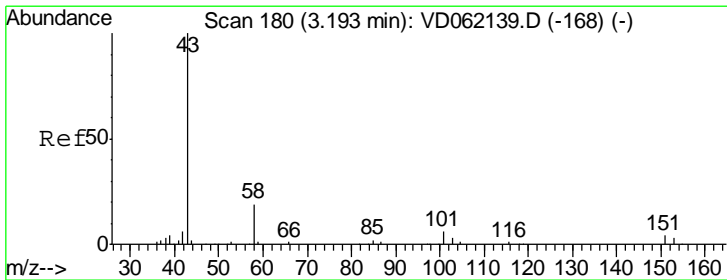
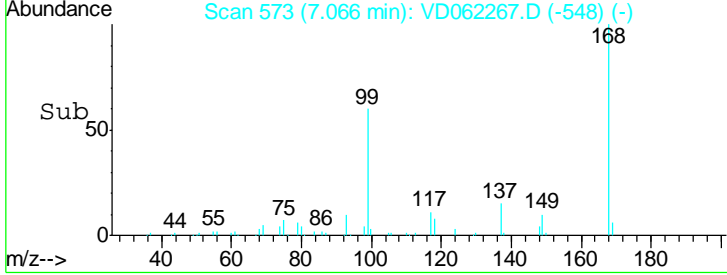
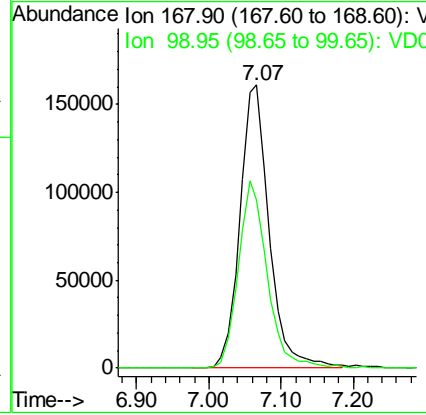
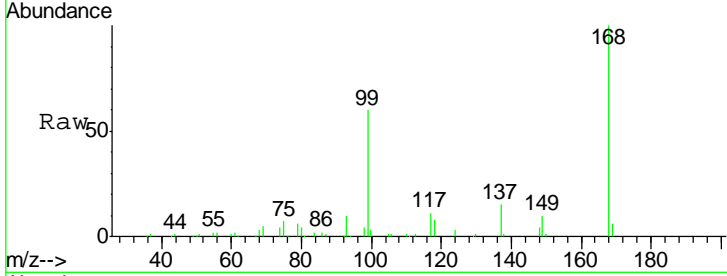




#1
 Pentafluorobenzene
 Concen: 50.000 ug/l
 RT: 7.07 min Scan# 573
 Delta R.T. 0.05 min
 Lab File: VD062267.D
 Acq: 12 May 2019 19:00

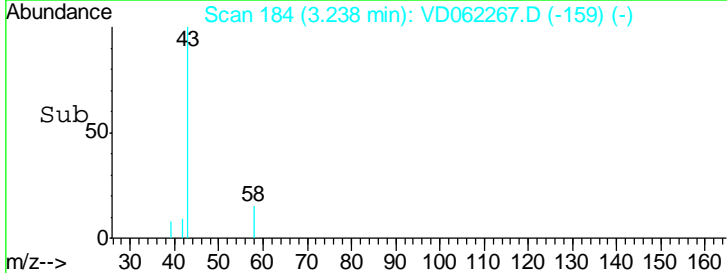
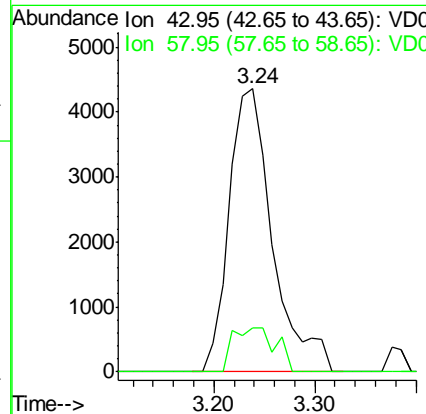
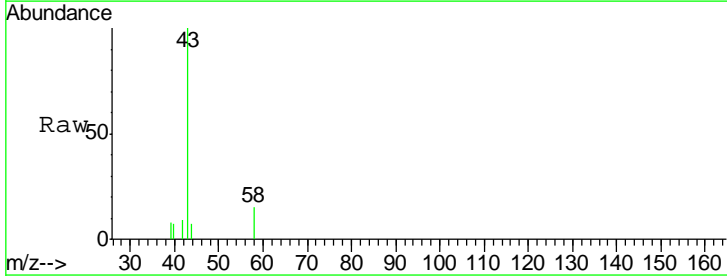
Instrument : MSVOA_D
 ClientSampleId : P021-SS002-1218-01

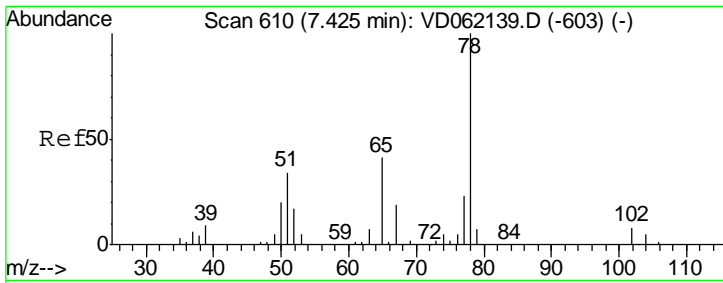
Tgt Ion	Resp	Lower	Upper
168	100		
99	59.6	46.5	69.7



#16
 Acetone
 Concen: 14.724 ug/l
 RT: 3.24 min Scan# 184
 Delta R.T. 0.05 min
 Lab File: VD062267.D
 Acq: 12 May 2019 19:00

Tgt Ion	Resp	Lower	Upper
43	100		
58	15.4	19.9	29.9#

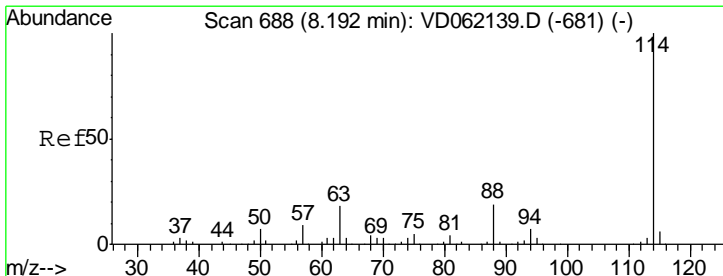
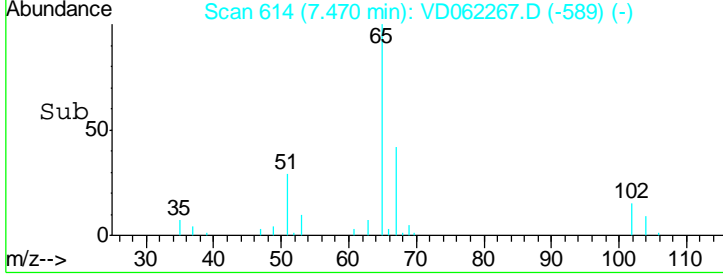
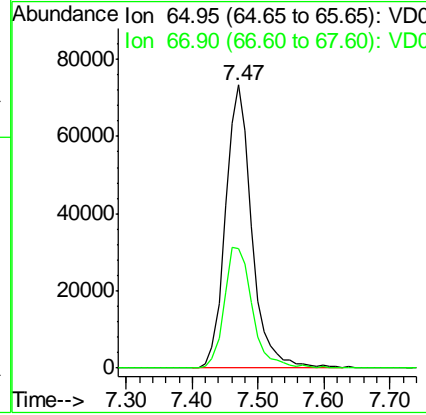
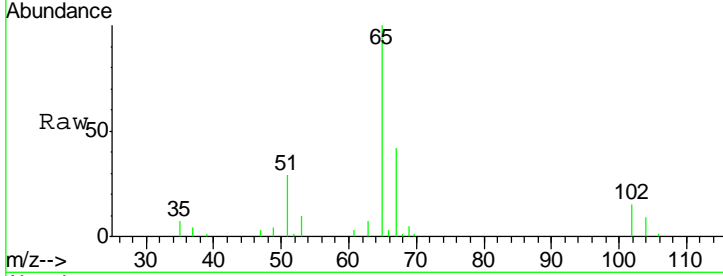




#33
 1,2-Dichloroethane-d4
 Concen: 48.301 ug/l
 RT: 7.47 min Scan# 614
 Delta R.T. 0.05 min
 Lab File: VD062267.D
 Acq: 12 May 2019 19:00

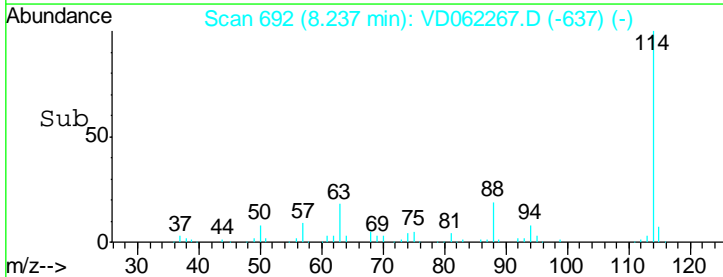
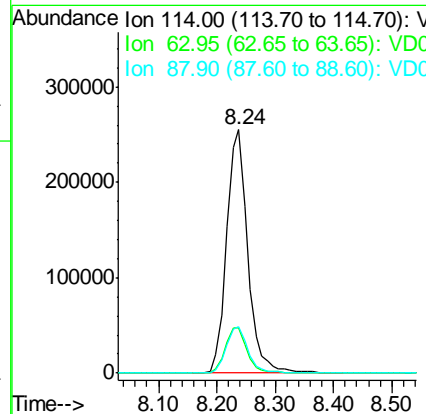
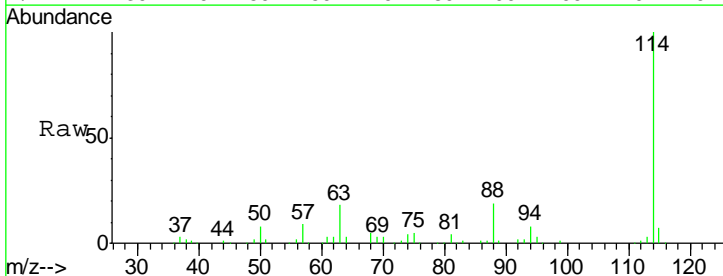
Instrument : MSVOA_D
 ClientSampleId : P021-SS002-1218-01

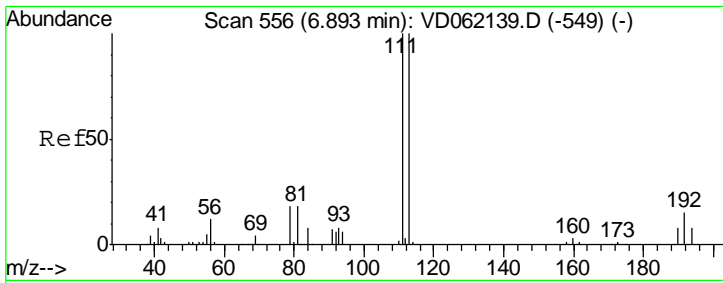
Tgt Ion	Resp	Lower	Upper
65	100		
67	42.1	0.0	98.0



#34
 1,4-Difluorobenzene
 Concen: 50.000 ug/l
 RT: 8.24 min Scan# 692
 Delta R.T. 0.05 min
 Lab File: VD062267.D
 Acq: 12 May 2019 19:00

Tgt Ion	Resp	Lower	Upper
114	100		
63	18.3	0.0	32.4
88	19.0	0.0	33.6

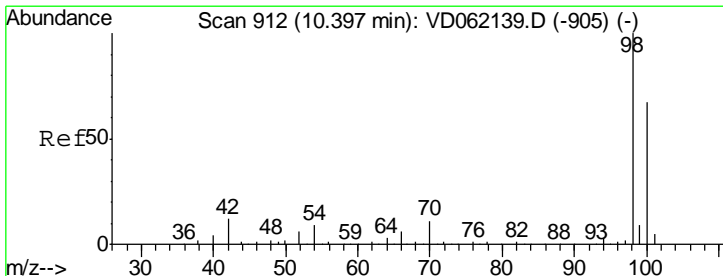
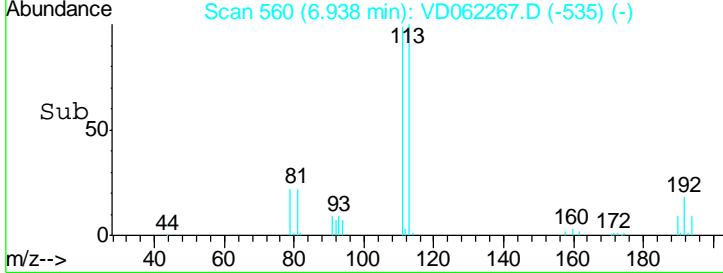
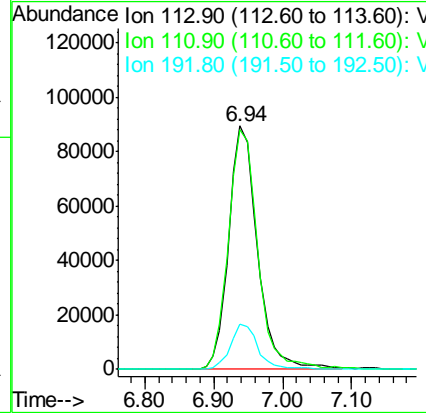
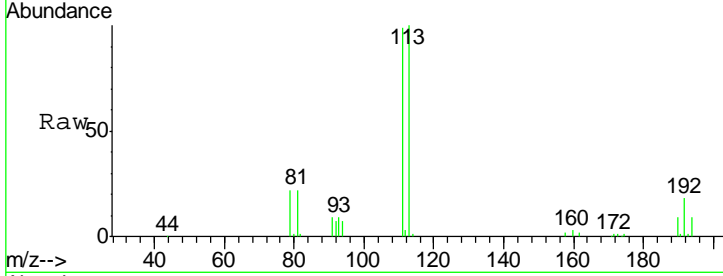




#35
 Dibromofluoromethane
 Concen: 48.568 ug/l
 RT: 6.94 min Scan# 560
 Delta R.T. 0.05 min
 Lab File: VD062267.D
 Acq: 12 May 2019 19:00

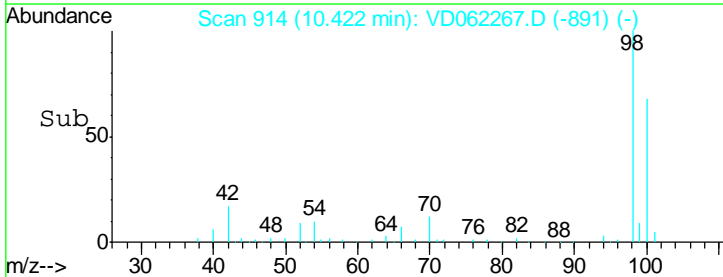
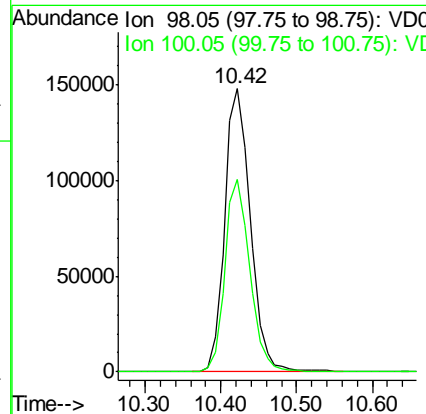
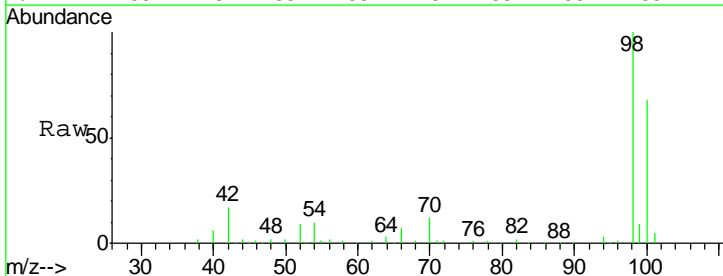
Instrument : MSVOA_D
 ClientSampleId : P021-SS002-1218-01

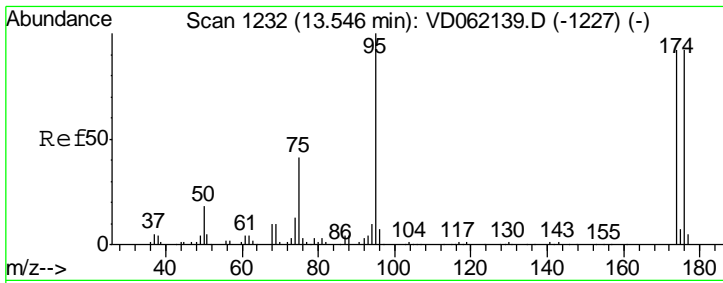
Tgt Ion	Resp	Lower	Upper
113	100		
111	98.7	78.5	117.7
192	18.3	13.0	19.4



#50
 Toluene-d8
 Concen: 27.080 ug/l
 RT: 10.42 min Scan# 914
 Delta R.T. 0.03 min
 Lab File: VD062267.D
 Acq: 12 May 2019 19:00

Tgt Ion	Resp	Lower	Upper
98	100		
100	68.1	53.8	80.8

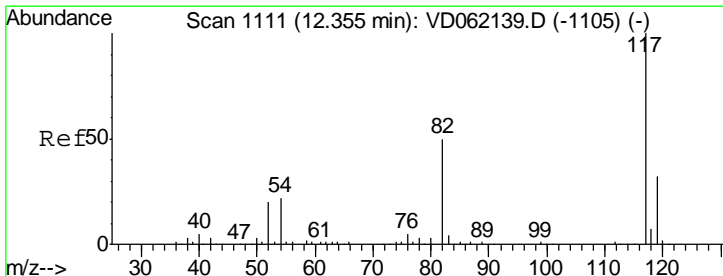
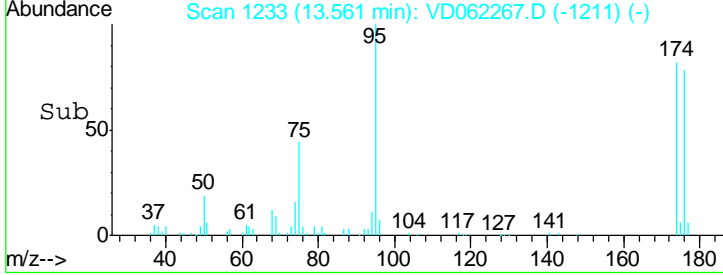
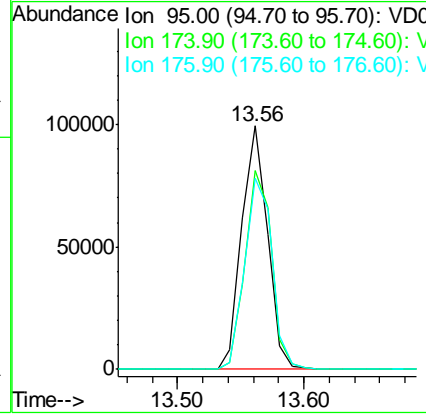
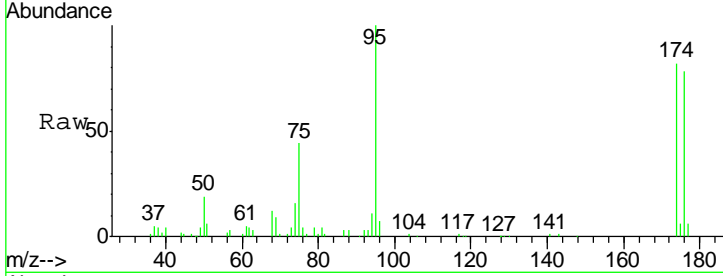




#62
 4-Bromofluorobenzene
 Concen: 27.060 ug/l
 RT: 13.56 min Scan# 1233
 Delta R.T. 0.02 min
 Lab File: VD062267.D
 Acq: 12 May 2019 19:00

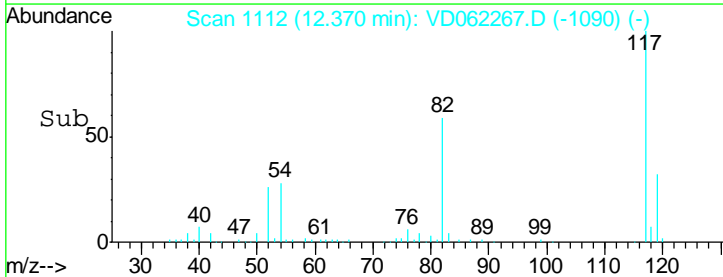
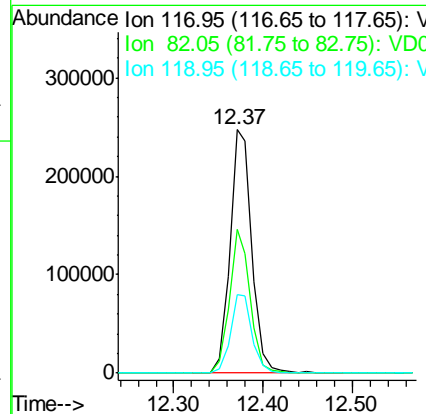
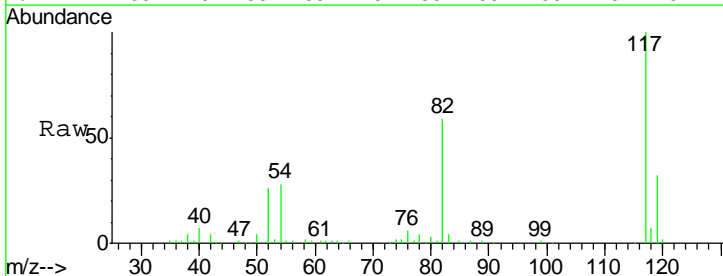
Instrument :
 MSVOA_D
 ClientSampled :
 P021-SS002-1218-01

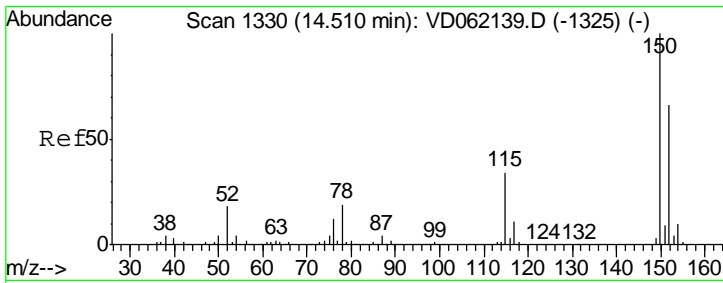
Tgt Ion	Resp	Lower	Upper
95	139747		
174	81.6	0.0	181.8
176	78.3	0.0	174.4



#63
 Chlorobenzene-d5
 Concen: 50.000 ug/l
 RT: 12.37 min Scan# 1112
 Delta R.T. 0.02 min
 Lab File: VD062267.D
 Acq: 12 May 2019 19:00

Tgt Ion	Resp	Lower	Upper
117	426138		
82	59.0	36.2	54.2#
119	32.4	26.2	39.4





#72
 1,4-Dichlorobenzene-d4
 Concen: 50.000 ug/l
 RT: 14.53 min Scan# 1331
 Delta R.T. 0.02 min
 Lab File: VD062267.D
 Acq: 12 May 2019 19:00

Instrument : MSVOA_D
 ClientSampleId : P021-SS002-1218-01

Tot Ion: 152 Resp: 186914

Ion	Ratio	Lower	Upper
152	100		
115	55.0	30.9	92.7
150	157.7	0.0	314.8

