

Data Path : Z:\voasrv\HPCHEM1\MSVOA_D\Data\VD051419\
 Data File : VD062349.D
 Acq On : 14 May 2019 16:30
 Operator : FY/SY
 Sample : K2756-20
 Misc : 5.09g/5mL/MSVOA_D/SOIL
 ALS Vial : 12 Sample Multiplier: 1

Instrument :
 MSVOA_D
 ClientSampleId :
 P021-SS008-0206-02

Integration Parameters: RTEINT.P

Integrator: RTE
 Smoothing : ON Filtering: 5
 Sampling : 1 Min Area: 3 % of largest Peak
 Start Thrs: 0.2 Max Peaks: 100
 Stop Thrs : 0 Peak Location: TOP

If leading or trailing edge < 100 prefer < Baseline drop else tangent >
 Peak separation: 5

Method : Z:\VOASRV\HPCHEM1\MSVOA_D\METHOD\82D050719S.M
 Title : SW846 8260

Signal : TIC

peak #	R.T. min	first scan	max scan	last scan	PK TY	peak height	corr. area	corr. % max.	% of total
1	3.842	241	246	253	rBV3	13643	38658	2.01%	0.345%
2	6.952	555	562	568	rBV	275705	786468	40.81%	7.009%
3	7.070	568	574	598	rVB	548274	1591892	82.61%	14.187%
4	7.473	609	615	627	rBV	197037	542705	28.16%	4.837%
5	8.241	687	693	709	rBV	644306	1654504	85.86%	14.745%
6	9.875	856	859	865	rBB2	10907	21245	1.10%	0.189%
7	10.426	910	915	922	rBV	527624	1231785	63.92%	10.977%
8	11.252	993	999	1004	rBV	15181	43361	2.25%	0.386%
9	12.384	1109	1114	1123	rBV	1103926	1926997	100.00%	17.173%
10	13.565	1230	1234	1244	rVV	756691	1020482	52.96%	9.094%
11	13.722	1247	1250	1254	rVB	28252	46741	2.43%	0.417%
12	14.529	1328	1332	1335	rBV	1371111	1765820	91.64%	15.737%
13	14.893	1366	1369	1372	rBV	354351	389438	20.21%	3.471%
14	15.120	1388	1392	1395	rBV	34048	46823	2.43%	0.417%
15	16.133	1492	1495	1498	rBV	63533	74149	3.85%	0.661%
16	16.301	1509	1512	1516	rBV	27231	39936	2.07%	0.356%

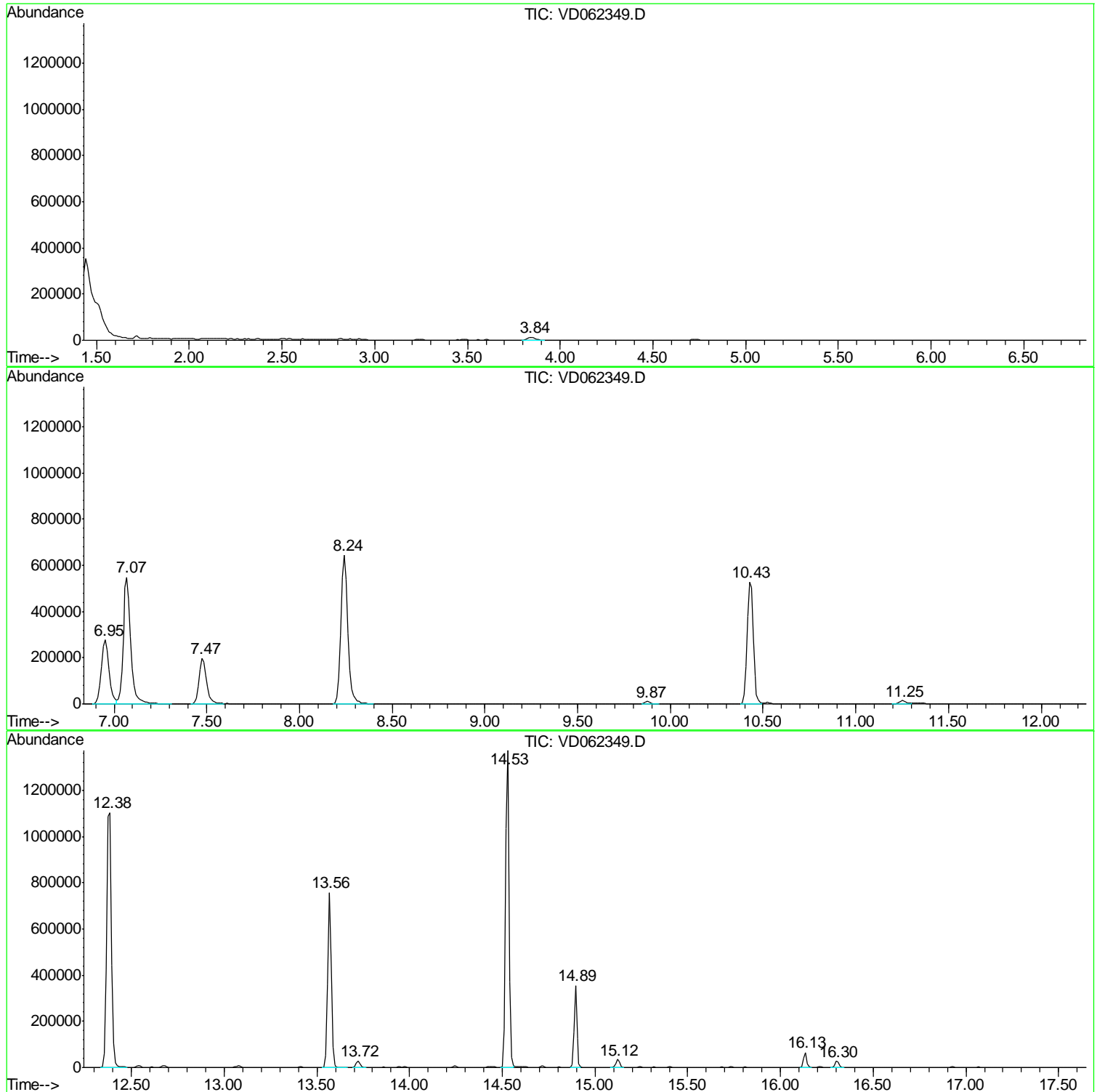
Sum of corrected areas: 11221004

Data Path : Z:\voasrv\HPCHEM1\MSVOA_D\Data\VD051419\
Data File : VD062349.D
Acq On : 14 May 2019 16:30
Operator : FY/SY
Sample : K2756-20
Misc : 5.09g/5mL/MSVOA_D/SOIL
ALS Vial : 12 Sample Multiplier: 1

Instrument :
MSVOA_D
ClientSampleId :
P021-SS008-0206-02

Quant Method : Z:\VOASRV\HPCHEM1\MSVOA_D\METHOD\82D050719S.M
Quant Title : SW846 8260

TIC Library : C:\DATABASE\NIST11.L
TIC Integration Parameters: LSCINT.P



Data Path : Z:\voasrv\HPCHEM1\MSVOA_D\Data\VD051419\
 Data File : VD062349.D
 Acq On : 14 May 2019 16:30
 Operator : FY/SY
 Sample : K2756-20
 Misc : 5.09g/5mL/MSVOA_D/SOIL
 ALS Vial : 12 Sample Multiplier: 1

Instrument :
 MSVOA_D
 ClientSampleID :
 P021-SS008-0206-02

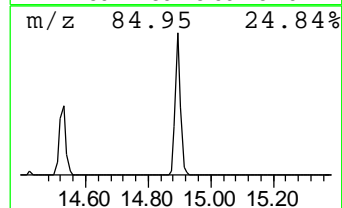
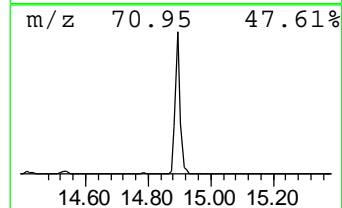
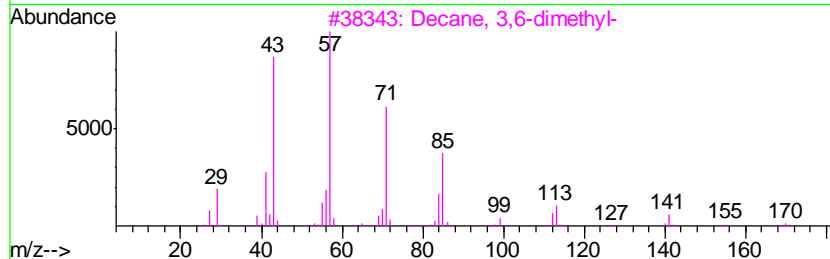
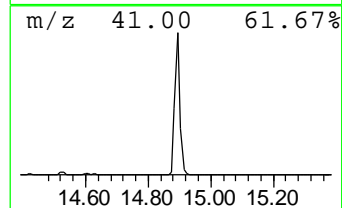
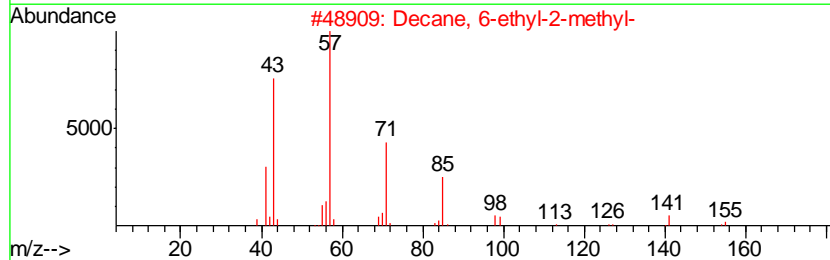
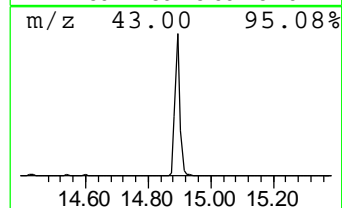
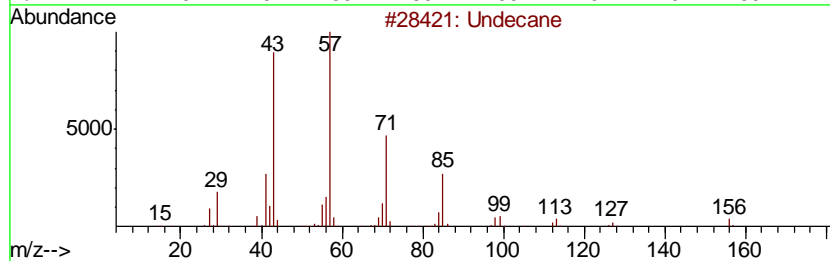
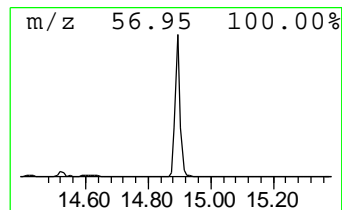
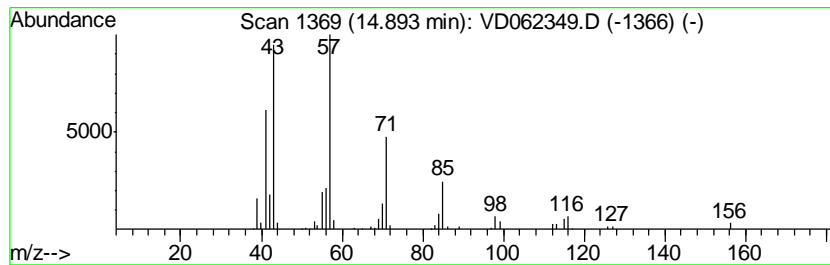
Quant Method : Z:\VOASRV\HPCHEM1\MSVOA_D\METHOD\82D050719S.M
 Quant Title : SW846 8260

TIC Library : C:\DATABASE\NIST11.L
 TIC Integration Parameters: LSCINT.P

 Peak Number 1 Undecane Concentration Rank 1

R.T.	EstConc	Area	Relative to ISTD	R.T.
14.89	11.03 ug/l	389438	1,4-Dichlorobenzene-d4	14.53

Hit#	of	Tentative ID	MW	MolForm	CAS#	Qual
1	5	Undecane	156	C11H24	001120-21-4	87
2		Decane, 6-ethyl-2-methyl-	184	C13H28	062108-21-8	64
3		Decane, 3,6-dimethyl-	170	C12H26	017312-53-7	59
4		Decane	142	C10H22	000124-18-5	59
5		Hexadecane	226	C16H34	000544-76-3	59



Data Path : Z:\voasrv\HPCHEM1\MSVOA_D\Data\VD051419\
Data File : VD062349.D
Acq On : 14 May 2019 16:30
Operator : FY/SY
Sample : K2756-20
Misc : 5.09g/5mL/MSVOA_D/SOIL
ALS Vial : 12 Sample Multiplier: 1

Instrument :
MSVOA_D
ClientSampleId :
P021-SS008-0206-02

Quant Method : Z:\VOASRV\HPCHEM1\MSVOA_D\METHOD\82D050719S.M
Quant Title : SW846 8260

TIC Library : C:\DATABASE\NIST11.L
TIC Integration Parameters: LSCINT.P

TIC Top Hit name	RT	EstConc	Units	Response	--Internal Standard--			
					#	RT	Resp	Conc
Undecane	14.89	11.0	ug/l	389438	4	14.53	1765820	50.0