

Data Path : Z:\voasrv\HPCHEM1\MSVOA_D\Data\VD051622\
 Data File : VD073038.D
 Acq On : 16 May 2022 16:39
 Operator : VA/SY
 Sample : N2816-18
 Misc : 5.48G/5.00ml/MSVOA_D/SOIL
 ALS Vial : 10 Sample Multiplier: 1

Instrument :
 MSVOA_D
 ClientSampleId :
 P007-SS010-0006-01

Integration Parameters: RTEINT.P

Integrator: RTE
 Smoothing : ON Filtering: 5
 Sampling : 1 Min Area: 3 % of largest Peak
 Start Thrs: 0.2 Max Peaks: 100
 Stop Thrs : 0 Peak Location: TOP

If leading or trailing edge < 100 prefer < Baseline drop else tangent >
 Peak separation: 5

Method : Z:\voasrv\HPCHEM1\MSVOA_D\Method\82D050222S.M
 Title : SW846 8260

Signal : TIC: VD073038.D\data.ms

peak #	R.T. min	first scan	max scan	last scan	PK TY	peak height	corr. area	corr. % max.	% of total
1	4.962	506	517	527	rBV2	17772	55304	2.97%	0.560%
2	5.985	684	691	698	rBV4	7885	21993	1.18%	0.223%
3	7.185	888	895	907	rVB	33991	98415	5.29%	0.996%
4	7.908	1007	1018	1023	rBV	276105	636878	34.22%	6.446%
5	7.973	1023	1029	1041	rVB	457833	1026767	55.16%	10.392%
6	8.326	1074	1089	1099	rBV2	223825	605051	32.51%	6.124%
7	8.855	1170	1179	1188	rBV	681044	1361349	73.14%	13.779%
8	10.332	1423	1430	1439	rBV	1031676	1861309	100.00%	18.839%
9	10.714	1489	1495	1501	rVB3	10346	19102	1.03%	0.193%
10	11.073	1550	1556	1562	rBV2	36638	61550	3.31%	0.623%
11	11.638	1644	1652	1663	rBV	948361	1662480	89.32%	16.827%
12	12.620	1810	1819	1828	rBV	706016	1149613	61.76%	11.636%
13	13.561	1972	1979	1987	rVV	817395	1301193	69.91%	13.170%
14	14.091	2062	2069	2076	rBV5	10262	19056	1.02%	0.193%

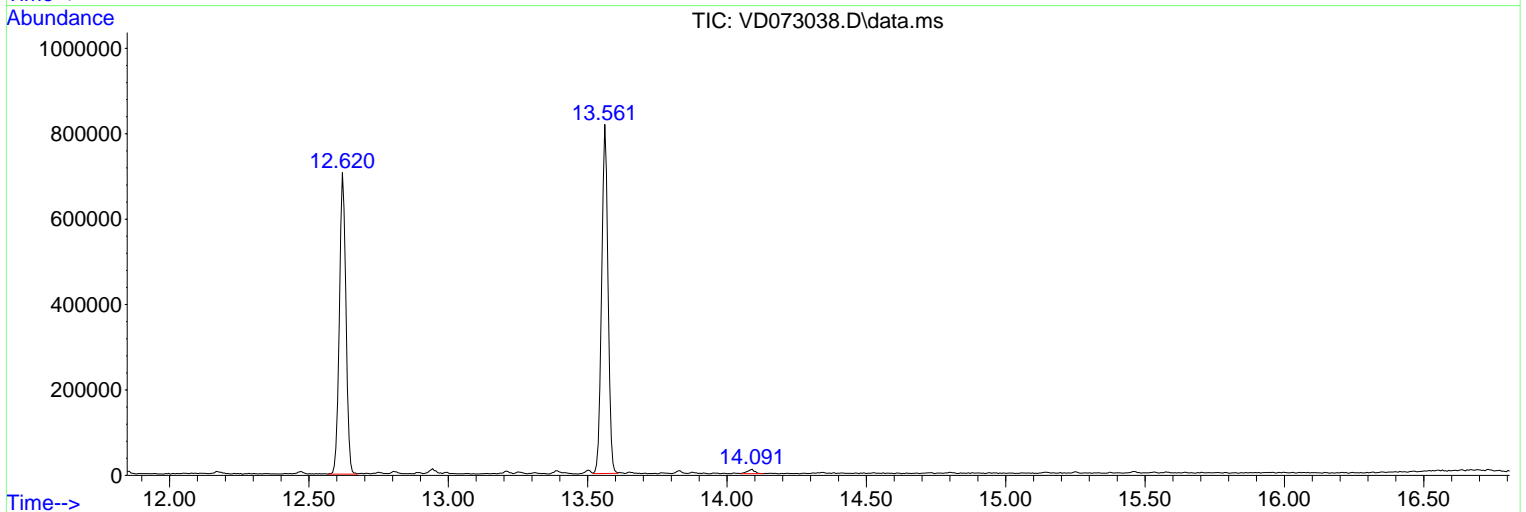
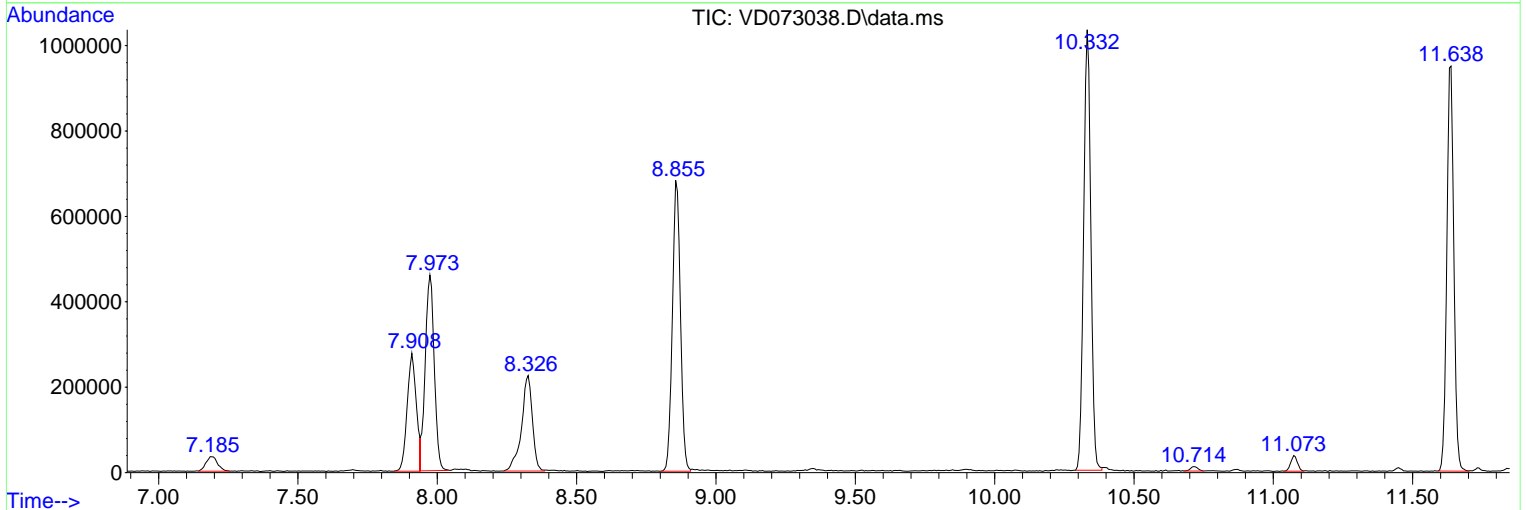
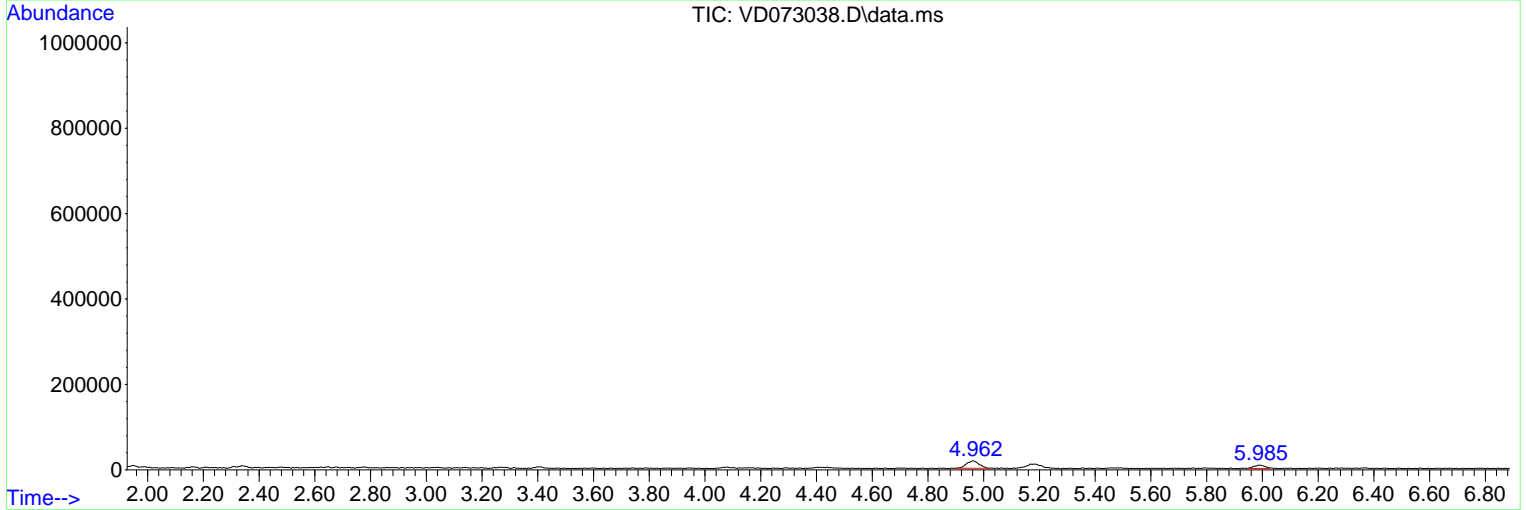
Sum of corrected areas: 9880060

Data Path : Z:\voasrv\HPCHEM1\MSVOA_D\Data\VD051622\
 Data File : VD073038.D
 Acq On : 16 May 2022 16:39
 Operator : VA/SY
 Sample : N2816-18
 Misc : 5.48G/5.00ml/MSVOA_D/SOIL
 ALS Vial : 10 Sample Multiplier: 1

Instrument :
 MSVOA_D
 ClientSampleId :
 P007-SS010-0006-01

Quant Method : Z:\voasrv\HPCHEM1\MSVOA_D\Method\82D050222S.M
 Quant Title : SW846 8260

TIC Library : C:\Database\NIST20.L
 TIC Integration Parameters: LSCINT.P



Library Search Compound Report

Data Path : Z:\voasrv\HPCHEM1\MSVOA_D\Data\VD051622\
Data File : VD073038.D
Acq On : 16 May 2022 16:39
Operator : VA/SY
Sample : N2816-18
Misc : 5.48G/5.00ml/MSVOA_D/SOIL
ALS Vial : 10 Sample Multiplier: 1

Instrument :
MSVOA_D
ClientSampleId :
P007-SS010-0006-01

Quant Method : Z:\voasrv\HPCHEM1\MSVOA_D\Method\82D050222S.M
Quant Title : SW846 8260

TIC Library : C:\Database\NIST20.L
TIC Integration Parameters: LSCINT.P

No Library Search Compounds Detected

Data Path : Z:\voasrv\HPCHEM1\MSVOA_D\Data\VD051622\
Data File : VD073038.D
Acq On : 16 May 2022 16:39
Operator : VA/SY
Sample : N2816-18
Misc : 5.48G/5.00ml/MSVOA_D/SOIL
ALS Vial : 10 Sample Multiplier: 1

Instrument :
MSVOA_D
ClientSampleId :
P007-SS010-0006-01

Quant Method : Z:\voasrv\HPCHEM1\MSVOA_D\Method\82D050222S.M
Quant Title : SW846 8260

TIC Library : C:\Database\NIST20.L
TIC Integration Parameters: LSCINT.P

TIC Top Hit name	RT	EstConc	Units	Response	--Internal Standard--			
					#	RT	Resp	Conc
