

Data Path : Z:\voasrv\HPCHEM1\MSVOA\_D\Data\VD052021\  
 Data File : VD069226.D  
 Acq On : 20 May 2021 18:47  
 Operator : VA/SY  
 Sample : M2472-11  
 Misc : 5.14G/5.00ml/MSVOA\_D/SOIL  
 ALS Vial : 18 Sample Multiplier: 1

Instrument :  
 MSVOA\_D  
 ClientSampled :

Quant Time: May 21 00:56:24 2021  
 Quant Method : Z:\voasrv\HPCHEM1\MSVOA\_D\Method\82D051221S.M  
 Quant Title : SW846 8260  
 QLast Update : Thu May 13 04:01:29 2021  
 Response via : Initial Calibration

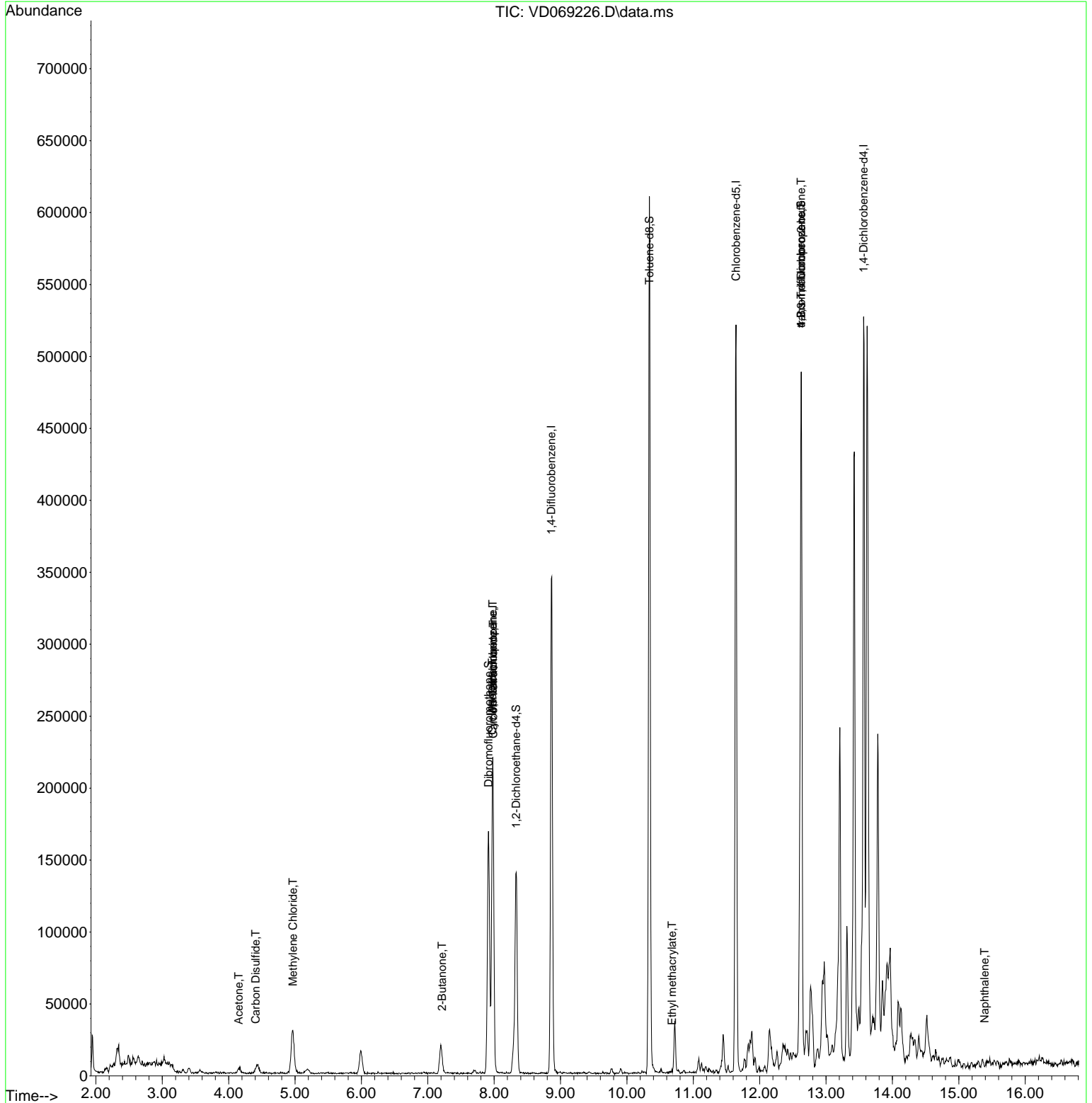
Compound	R.T.	QIon	Response	Conc	Units	Dev(Min)
-----						
Internal Standards						
1) Pentafluorobenzene	7.979	168	158628	50.00	ug/l	0.00
34) 1,4-Difluorobenzene	8.861	114	303137	50.00	ug/l	0.00
63) Chlorobenzene-d5	11.643	117	312721	50.00	ug/l	0.00
72) 1,4-Dichlorobenzene-d4	13.567	152	128998	50.00	ug/l	0.00
System Monitoring Compounds						
33) 1,2-Dichloroethane-d4	8.332	65	111608	70.18	ug/l	0.00
Spiked Amount	50.000	Range	50 - 163	Recovery	=	140.36%
35) Dibromofluoromethane	7.914	113	118998	60.32	ug/l	0.00
Spiked Amount	50.000	Range	54 - 147	Recovery	=	120.64%
50) Toluene-d8	10.338	98	423188	58.38	ug/l	0.00
Spiked Amount	50.000	Range	49 - 140	Recovery	=	116.76%
62) 4-Bromofluorobenzene	12.626	95	139592	59.85	ug/l	0.00
Spiked Amount	50.000	Range	25 - 144	Recovery	=	119.70%
Target Compounds						
						Qvalue
11) Tert butyl alcohol	5.256	59	228	Below Cal	#	73
16) Acetone	4.150	43	3201	13.14	ug/l #	79
17) Carbon Disulfide	4.409	76	5519	1.05	ug/l #	89
20) Methylene Chloride	4.967	84	25658	4.73	ug/l	96
25) 2-Butanone	7.214	43	1161	3.52	ug/l #	38
31) Cyclohexane	7.973	56	4402	1.87	ug/l #	50
36) 1,1-Dichloropropene	7.979	75	13468	4.57	ug/l #	47
38) Carbon Tetrachloride	7.985	117	16770	5.09	ug/l #	15
56) Ethyl methacrylate	10.679	69	55	1.35	ug/l #	1
76) 1,2,3-Trichloropropane	12.626	75	69155	71.32	ug/l #	100
81) trans-1,4-Dichloro-2-b...	12.626	75	69155	144.06	ug/l #	14
95) Naphthalene	15.390	128	303	2.11	ug/l #	75
-----						

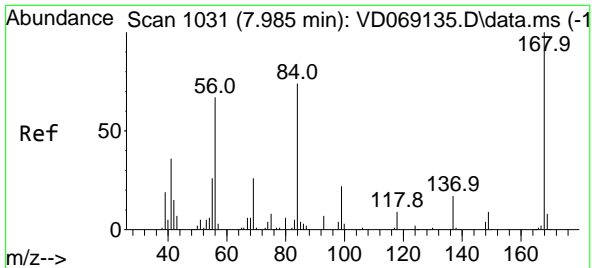
(#) = qualifier out of range (m) = manual integration (+) = signals summed

Data Path : Z:\voasrv\HPCHEM1\MSVOA\_D\Data\VD052021\  
 Data File : VD069226.D  
 Acq On : 20 May 2021 18:47  
 Operator : VA/SY  
 Sample : M2472-11  
 Misc : 5.14G/5.00ml/MSVOA\_D/SOIL  
 ALS Vial : 18 Sample Multiplier: 1

Instrument :  
 MSVOA\_D  
 ClientSampled :

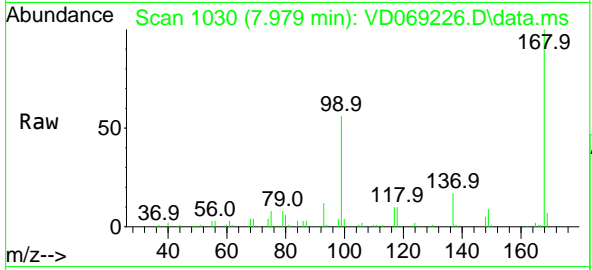
Quant Time: May 21 00:56:24 2021  
 Quant Method : Z:\voasrv\HPCHEM1\MSVOA\_D\Method\82D051221S.M  
 Quant Title : SW846 8260  
 QLast Update : Thu May 13 04:01:29 2021  
 Response via : Initial Calibration



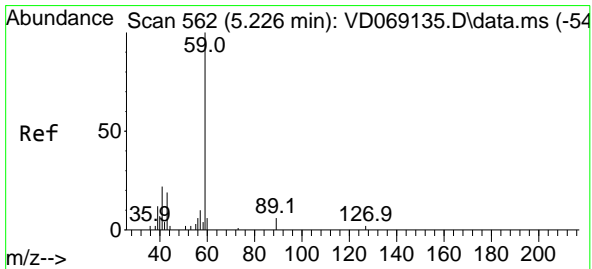
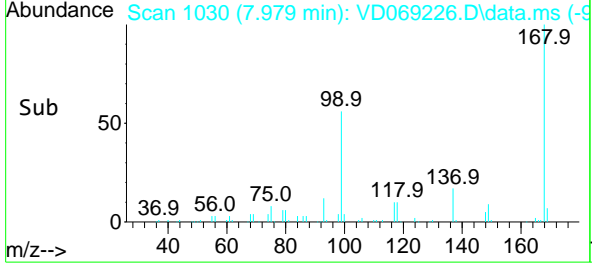
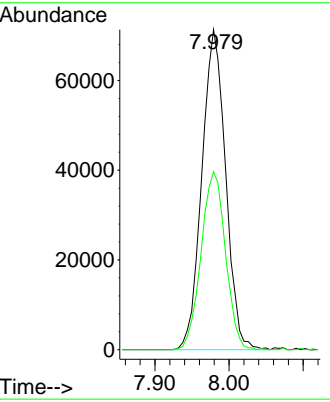


#1  
 Pentafluorobenzene  
 Concen: 50.00 ug/l  
 RT: 7.979 min Scan# 1030  
 Delta R.T. -0.006 min  
 Lab File: VD069226.D  
 Acq: 20 May 2021 18:47

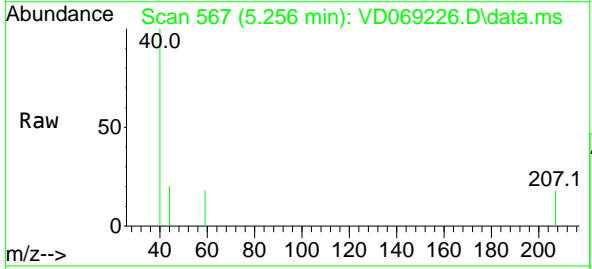
Instrument :  
 MSVOA\_D  
 ClientSampled :



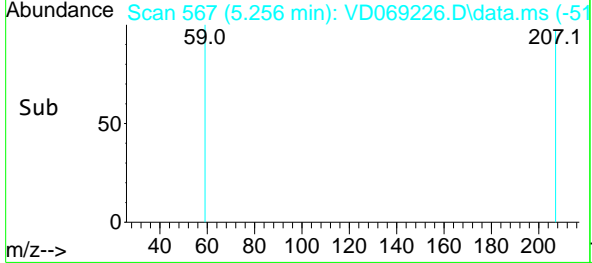
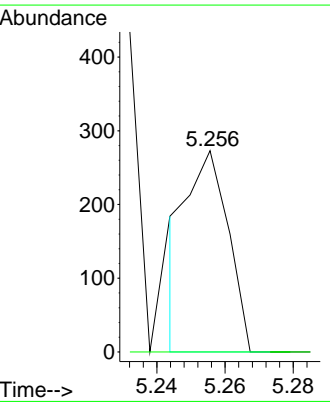
Tgt Ion:168 Resp: 158628  
 Ion Ratio Lower Upper  
 168 100  
 99 55.6 47.2 70.8

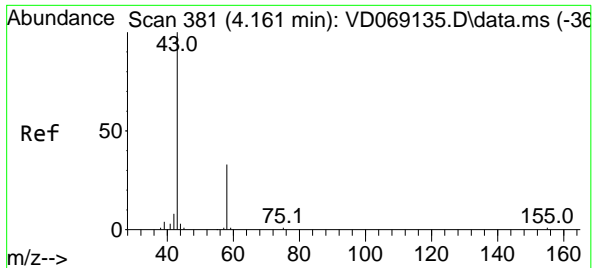


#11  
 Tert butyl alcohol  
 Concen: Below Cal  
 RT: 5.256 min Scan# 567  
 Delta R.T. 0.030 min  
 Lab File: VD069226.D  
 Acq: 20 May 2021 18:47



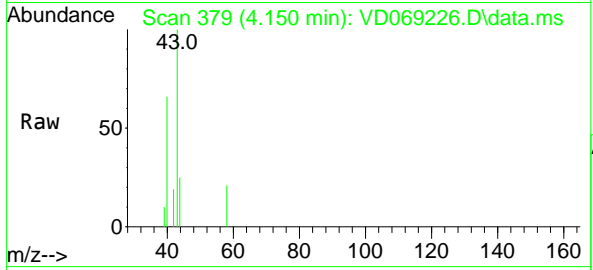
Tgt Ion: 59 Resp: 228  
 Ion Ratio Lower Upper  
 59 100  
 57 0.0 7.8 11.8#



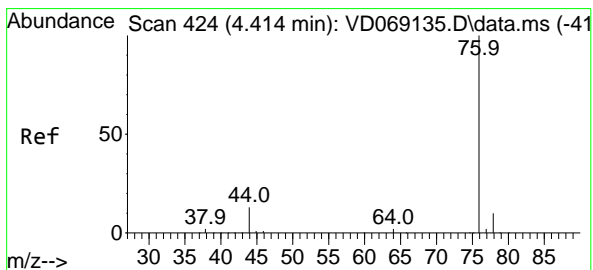
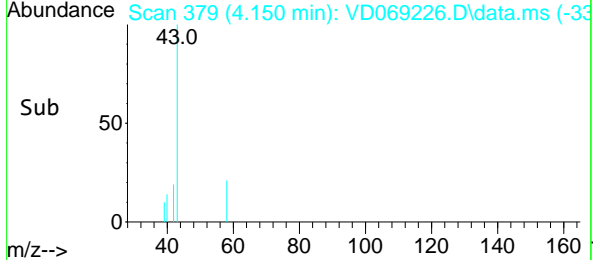
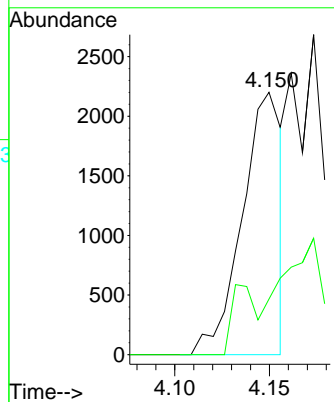


#16  
 Acetone  
 Concen: 13.14 ug/l  
 RT: 4.150 min Scan# 379  
 Delta R.T. -0.011 min  
 Lab File: VD069226.D  
 Acq: 20 May 2021 18:47

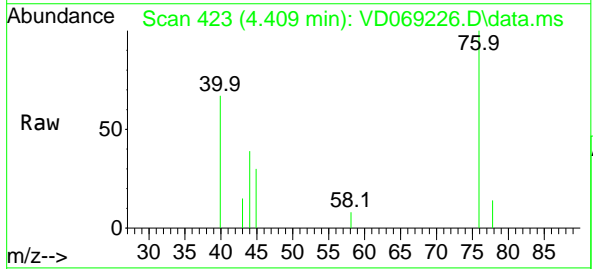
Instrument :  
 MSVOA\_D  
 ClientSampled :



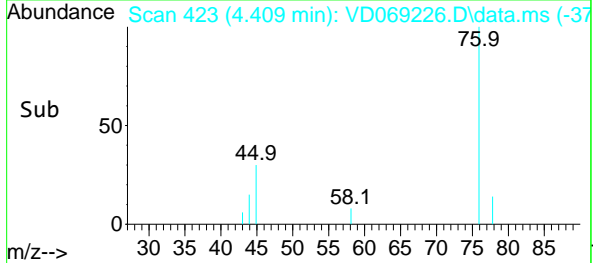
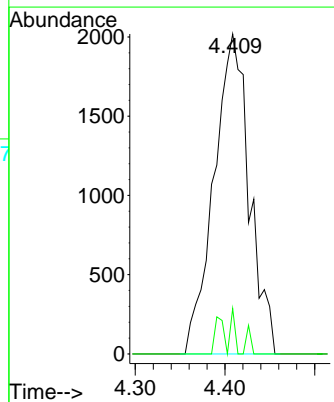
Tgt Ion: 43 Resp: 3201  
 Ion Ratio Lower Upper  
 43 100  
 58 21.2 26.7 40.1#

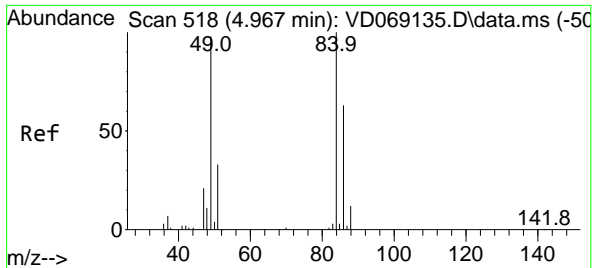


#17  
 Carbon Disulfide  
 Concen: 1.05 ug/l  
 RT: 4.409 min Scan# 423  
 Delta R.T. -0.006 min  
 Lab File: VD069226.D  
 Acq: 20 May 2021 18:47



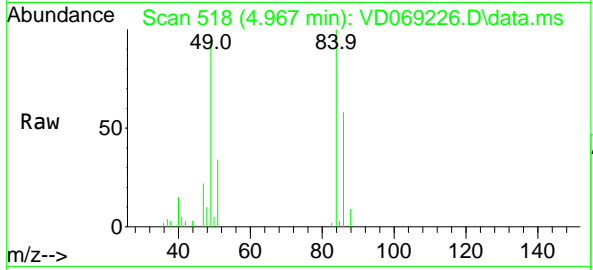
Tgt Ion: 76 Resp: 5519  
 Ion Ratio Lower Upper  
 76 100  
 78 14.2 8.1 12.1#





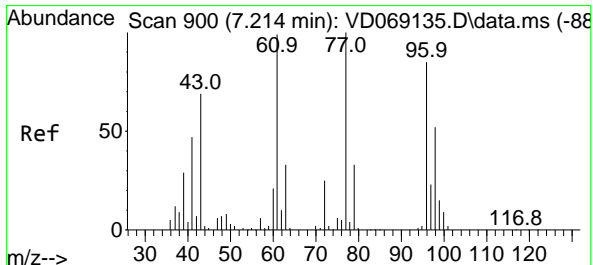
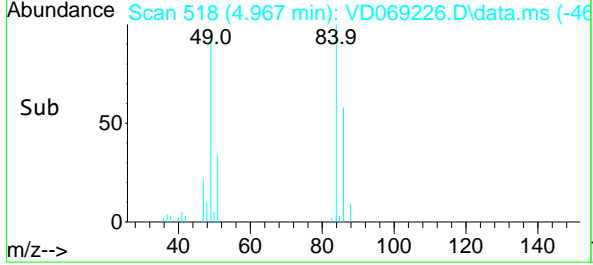
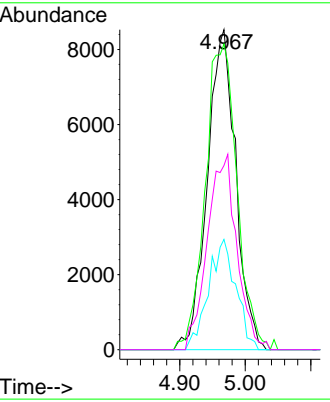
#20  
 Methylene Chloride  
 Concen: 4.73 ug/l  
 RT: 4.967 min Scan# 518  
 Delta R.T. 0.000 min  
 Lab File: VD069226.D  
 Acq: 20 May 2021 18:47

Instrument :  
 MSVOA\_D  
 ClientSampled :

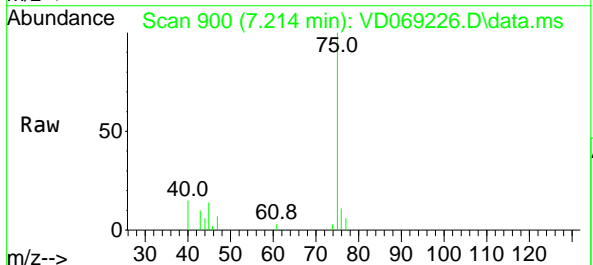


Tgt Ion: 84 Resp: 25658

Ion	Ratio	Lower	Upper
84	100		
49	95.5	78.6	117.8
51	34.5	26.7	40.1
86	57.5	50.3	75.5

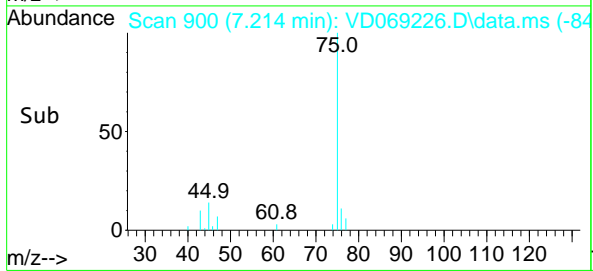
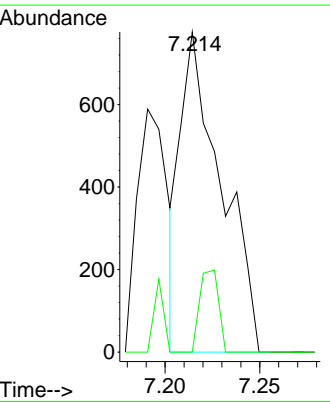


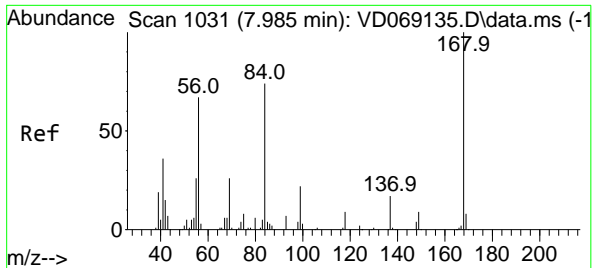
#25  
 2-Butanone  
 Concen: 3.52 ug/l  
 RT: 7.214 min Scan# 900  
 Delta R.T. 0.000 min  
 Lab File: VD069226.D  
 Acq: 20 May 2021 18:47



Tgt Ion: 43 Resp: 1161

Ion	Ratio	Lower	Upper
43	100		
72	0.0	29.1	43.7#

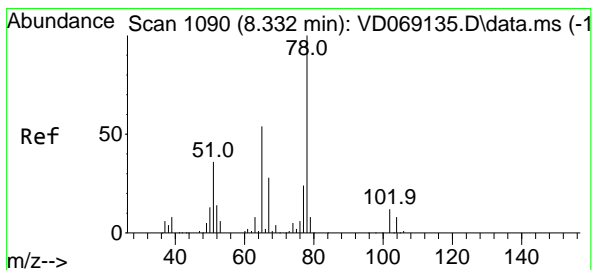
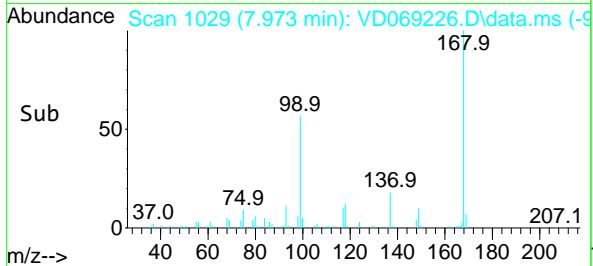
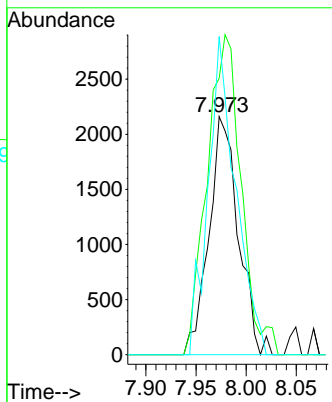
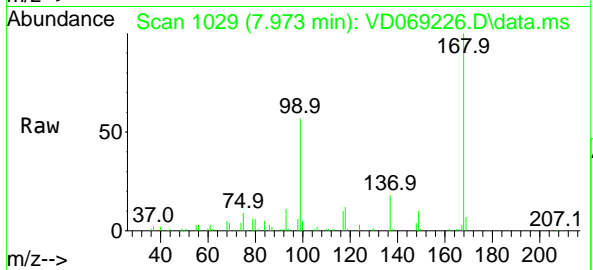




#31  
 Cyclohexane  
 Concen: 1.87 ug/l  
 RT: 7.973 min Scan# 1029  
 Delta R.T. -0.011 min  
 Lab File: VD069226.D  
 Acq: 20 May 2021 18:47

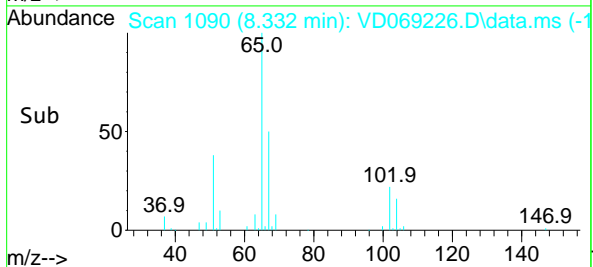
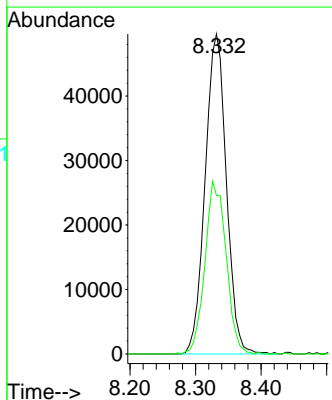
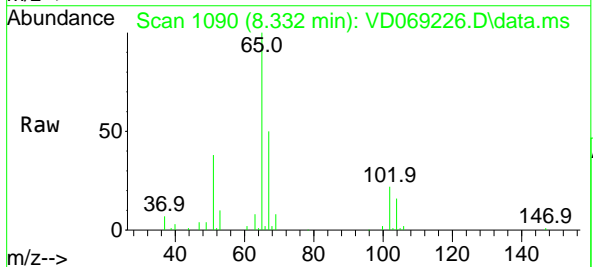
Instrument :  
 MSVOA\_D  
 ClientSampled :

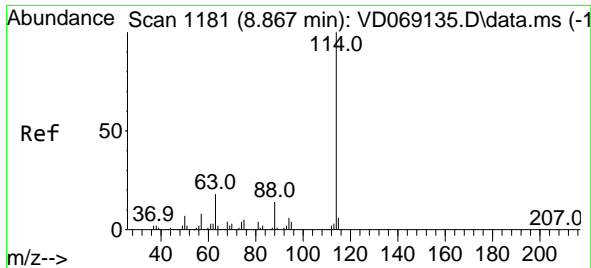
Tgt Ion	Resp	Lower	Upper
56	100		
69	116.0	30.6	46.0#
84	133.5	88.0	132.0#



#33  
 1,2-Dichloroethane-d4  
 Concen: 70.18 ug/l  
 RT: 8.332 min Scan# 1090  
 Delta R.T. 0.000 min  
 Lab File: VD069226.D  
 Acq: 20 May 2021 18:47

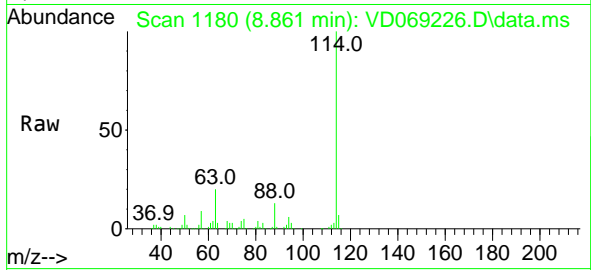
Tgt Ion	Resp	Lower	Upper
65	100		
67	53.8	0.0	108.0





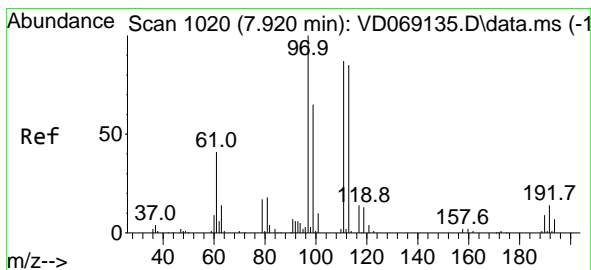
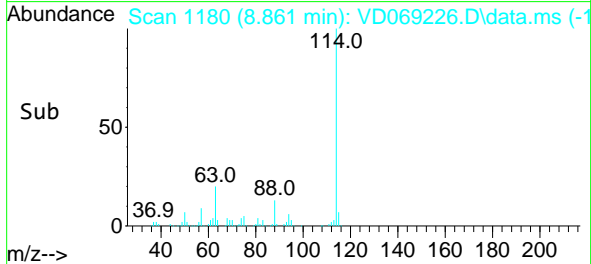
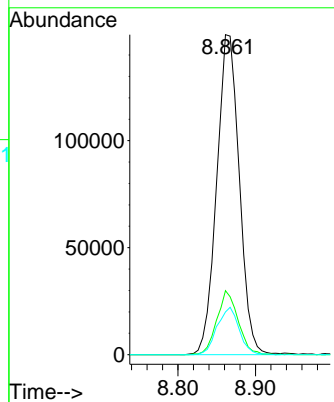
#34  
 1,4-Difluorobenzene  
 Concen: 50.00 ug/l  
 RT: 8.861 min Scan# 1180  
 Delta R.T. -0.006 min  
 Lab File: VD069226.D  
 Acq: 20 May 2021 18:47

Instrument :  
 MSVOA\_D  
 ClientSampled :

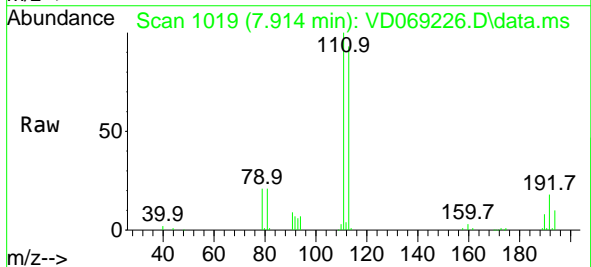


Tgt Ion:114 Resp: 303137

Ion	Ratio	Lower	Upper
114	100		
63	20.0	0.0	36.4
88	13.4	0.0	28.2

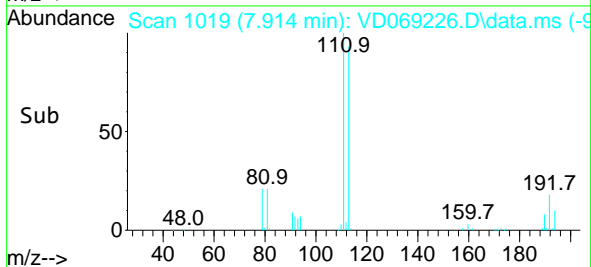
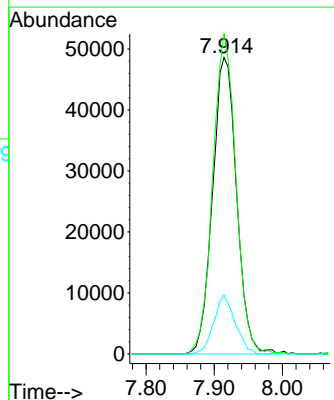


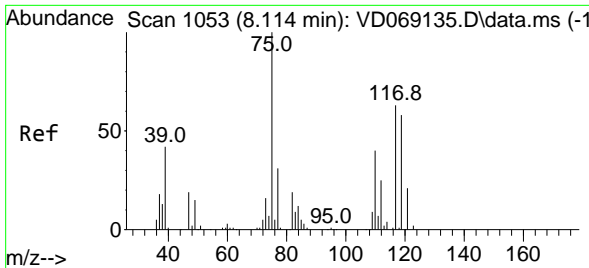
#35  
 Dibromofluoromethane  
 Concen: 60.32 ug/l  
 RT: 7.914 min Scan# 1019  
 Delta R.T. -0.006 min  
 Lab File: VD069226.D  
 Acq: 20 May 2021 18:47



Tgt Ion:113 Resp: 118998

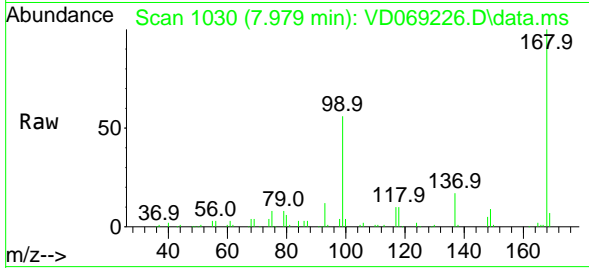
Ion	Ratio	Lower	Upper
113	100		
111	104.5	80.6	120.8
192	17.8	14.8	22.2





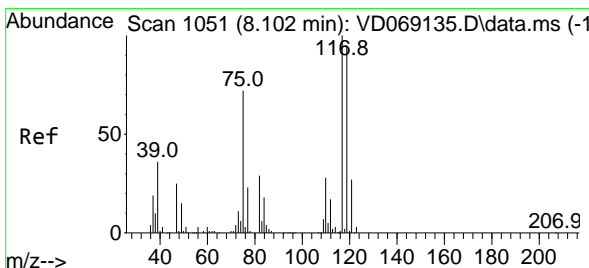
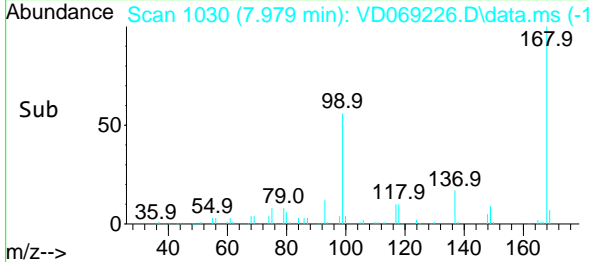
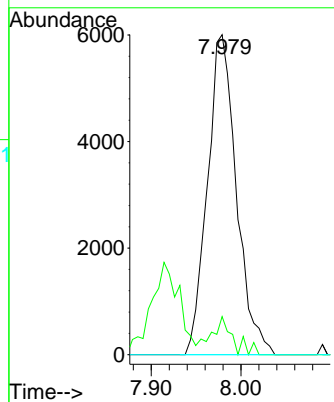
#36  
 1,1-Dichloropropene  
 Concen: 4.57 ug/l  
 RT: 7.979 min Scan# 1030  
 Delta R.T. -0.135 min  
 Lab File: VD069226.D  
 Acq: 20 May 2021 18:47

Instrument :  
 MSVOA\_D  
 ClientSampled :

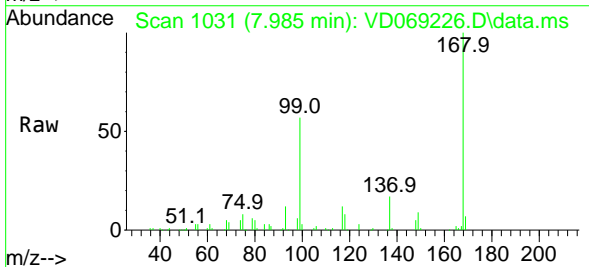


Tgt Ion: 75 Resp: 13468

Ion	Ratio	Lower	Upper
75	100		
110	7.5	18.8	56.4#
77	0.0	25.2	37.8#

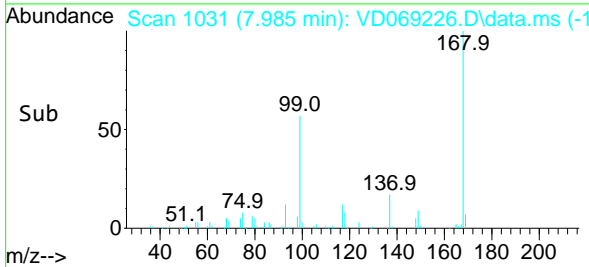
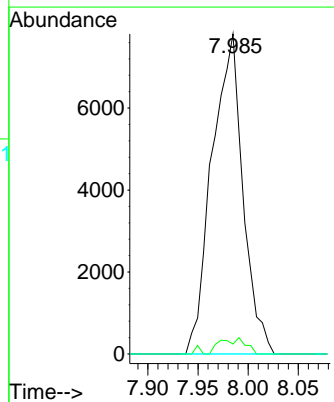


#38  
 Carbon Tetrachloride  
 Concen: 5.09 ug/l  
 RT: 7.985 min Scan# 1031  
 Delta R.T. -0.117 min  
 Lab File: VD069226.D  
 Acq: 20 May 2021 18:47

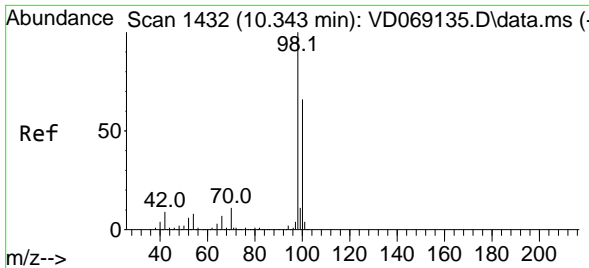


Tgt Ion: 117 Resp: 16770

Ion	Ratio	Lower	Upper
117	100		
119	3.1	76.2	114.2#
121	0.0	21.9	32.9#



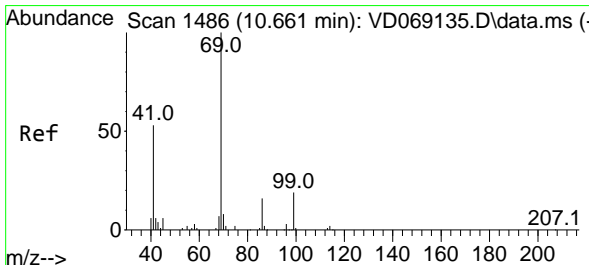
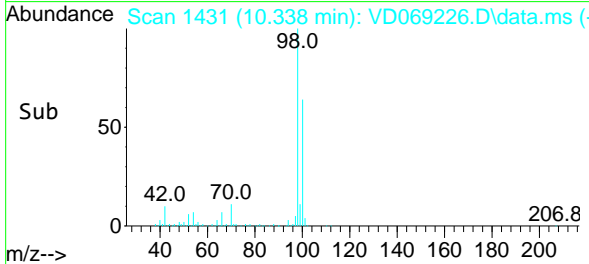
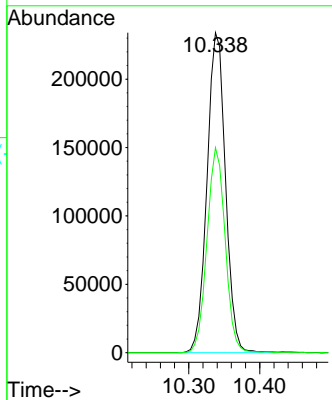
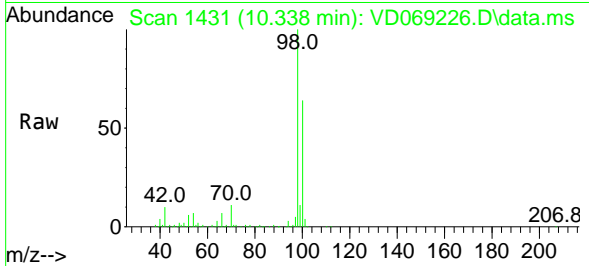




#50  
 Toluene-d8  
 Concen: 58.38 ug/l  
 RT: 10.338 min Scan# 1431  
 Delta R.T. -0.006 min  
 Lab File: VD069226.D  
 Acq: 20 May 2021 18:47

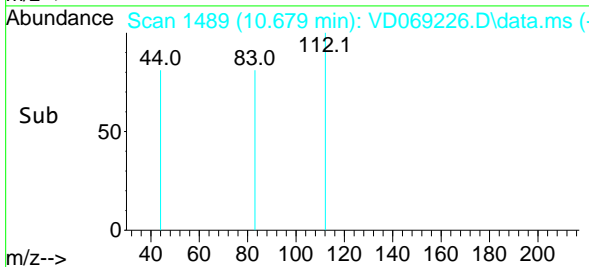
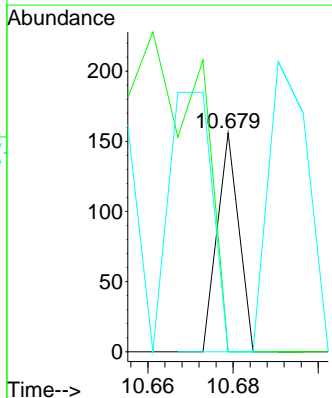
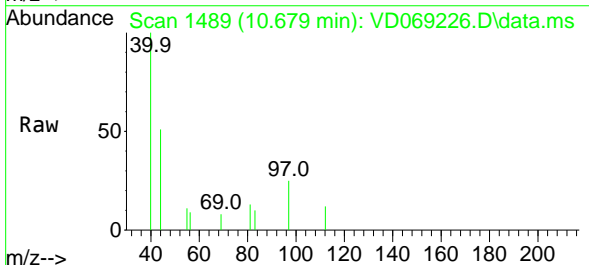
Instrument :  
 MSVOA\_D  
 ClientSampled :

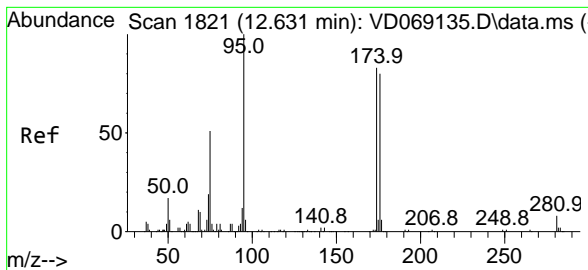
Tgt Ion: 98 Resp: 423188  
 Ion Ratio Lower Upper  
 98 100  
 100 63.0 51.8 77.8



#56  
 Ethyl methacrylate  
 Concen: 1.35 ug/l  
 RT: 10.679 min Scan# 1489  
 Delta R.T. 0.018 min  
 Lab File: VD069226.D  
 Acq: 20 May 2021 18:47

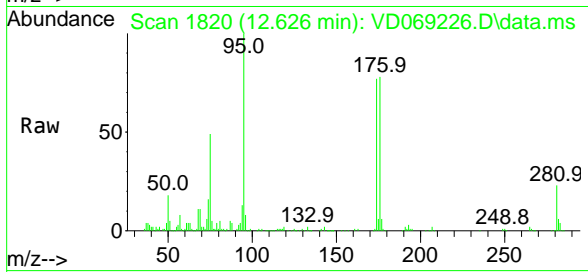
Tgt Ion: 69 Resp: 55  
 Ion Ratio Lower Upper  
 69 100  
 41 0.0 42.2 63.2#  
 39 241.8 26.3 39.5#



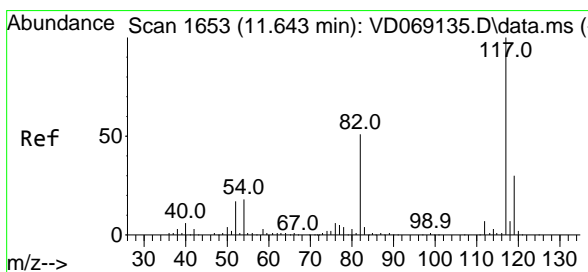
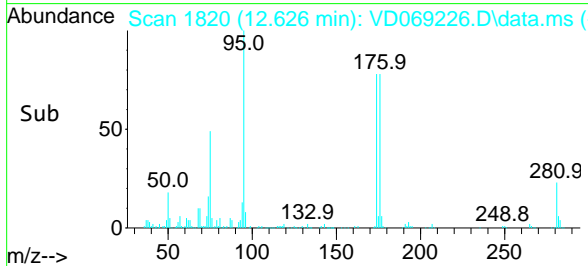
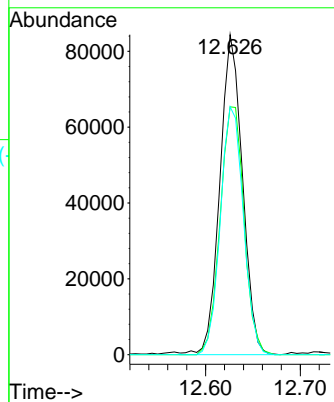


#62  
 4-Bromofluorobenzene  
 Concen: 59.85 ug/l  
 RT: 12.626 min Scan# 1820  
 Delta R.T. -0.006 min  
 Lab File: VD069226.D  
 Acq: 20 May 2021 18:47

Instrument :  
 MSVOA\_D  
 ClientSampled :

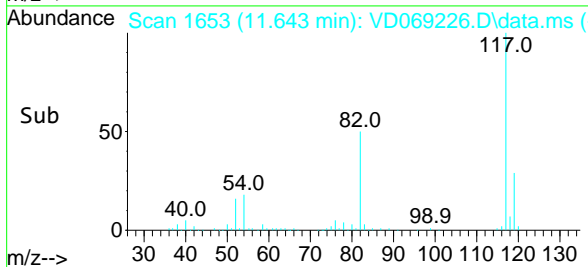
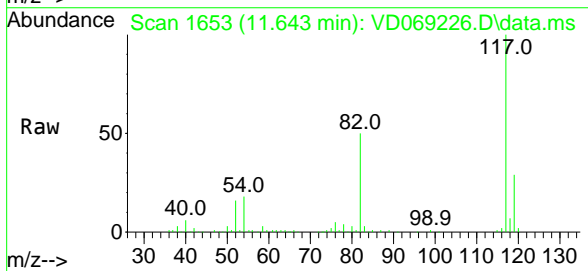
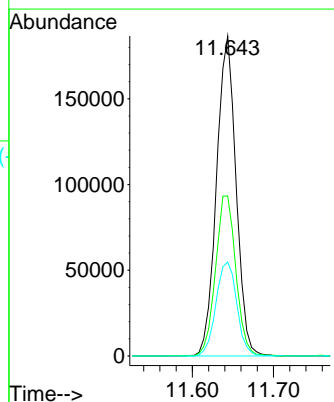


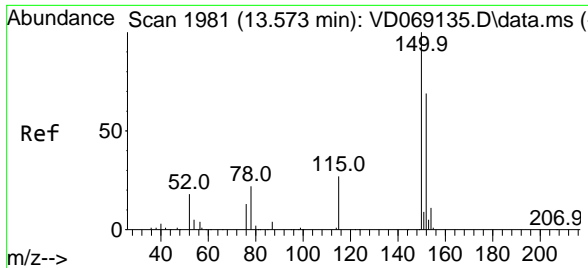
Tgt Ion: 95 Resp: 139592  
 Ion Ratio Lower Upper  
 95 100  
 174 81.7 0.0 171.8  
 176 78.9 0.0 165.4



#63  
 Chlorobenzene-d5  
 Concen: 50.00 ug/l  
 RT: 11.643 min Scan# 1653  
 Delta R.T. 0.000 min  
 Lab File: VD069226.D  
 Acq: 20 May 2021 18:47

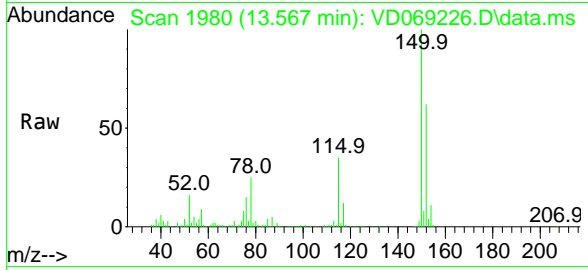
Tgt Ion: 117 Resp: 312721  
 Ion Ratio Lower Upper  
 117 100  
 82 50.0 40.5 60.7  
 119 29.3 24.2 36.4



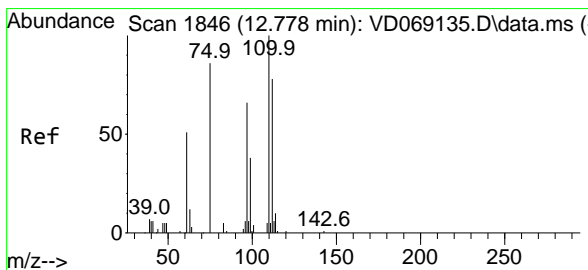
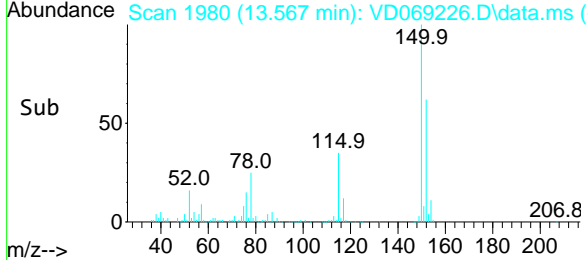
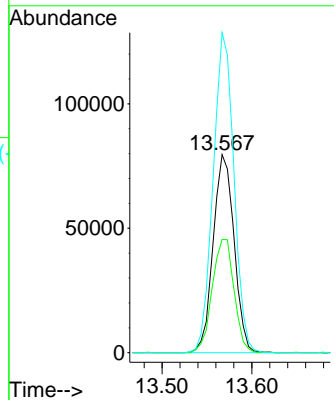


#72  
 1,4-Dichlorobenzene-d4  
 Concen: 50.00 ug/l  
 RT: 13.567 min Scan# 1980  
 Delta R.T. -0.006 min  
 Lab File: VD069226.D  
 Acq: 20 May 2021 18:47

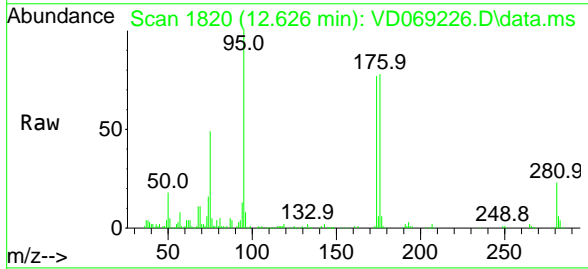
Instrument :  
 MSVOA\_D  
 ClientSampled :



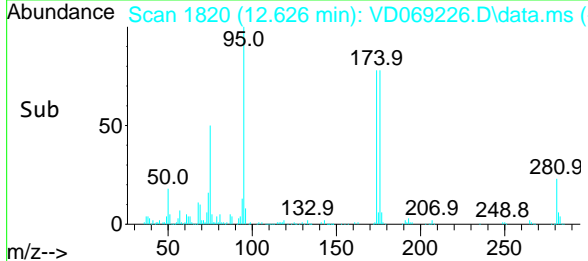
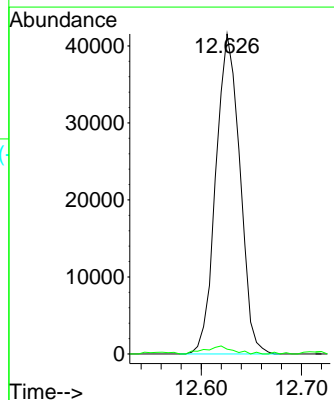
Tgt Ion:152 Resp: 128998  
 Ion Ratio Lower Upper  
 152 100  
 115 59.7 29.9 89.8  
 150 159.9 0.0 350.2

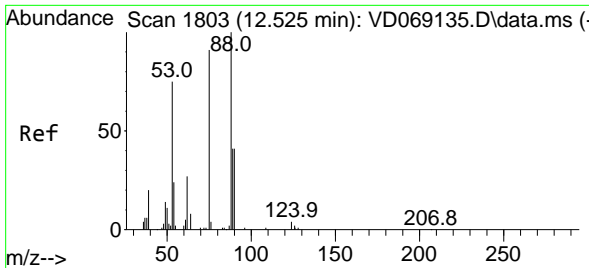


#76  
 1,2,3-Trichloropropane  
 Concen: 71.32 ug/l  
 RT: 12.626 min Scan# 1820  
 Delta R.T. -0.153 min  
 Lab File: VD069226.D  
 Acq: 20 May 2021 18:47



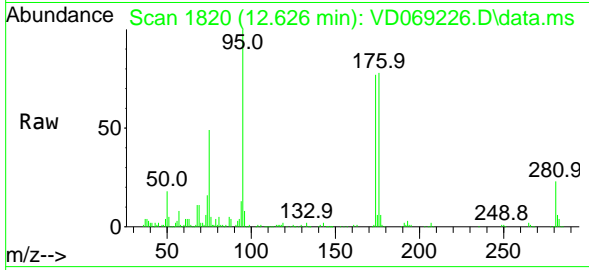
Tgt Ion: 75 Resp: 69155  
 Ion Ratio Lower Upper  
 75 100  
 77 2.9 0.0 0.0#



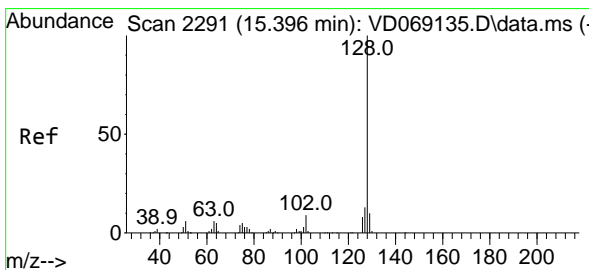
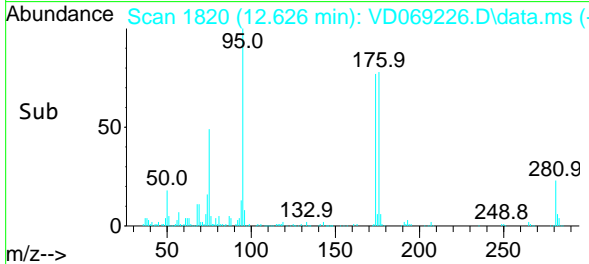
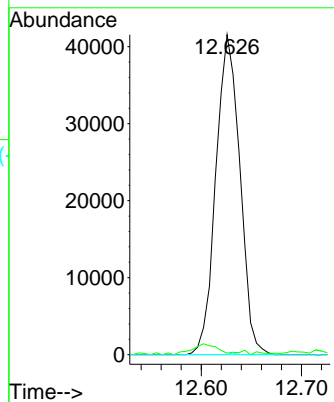


#81  
 trans-1,4-Dichloro-2-butene  
 Concen: 144.06 ug/l  
 RT: 12.626 min Scan# 1820  
 Delta R.T. 0.100 min  
 Lab File: VD069226.D  
 Acq: 20 May 2021 18:47

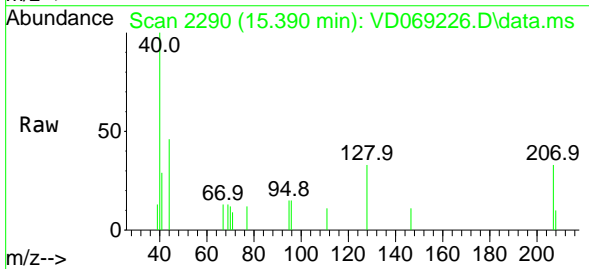
Instrument :  
 MSVOA\_D  
 ClientSampled :



Tgt Ion	Resp	Lower	Upper
75	69155		
75	100		
53	0.3	70.0	105.0#
89	0.1	40.2	60.2#



#95  
 Naphthalene  
 Concen: 2.11 ug/l  
 RT: 15.390 min Scan# 2290  
 Delta R.T. -0.006 min  
 Lab File: VD069226.D  
 Acq: 20 May 2021 18:47



Tgt Ion	Resp	Lower	Upper
128	303		
128	100		
127	21.8	10.5	15.7#
129	0.0	8.9	13.3#

