

Data Path : Z:\VOASRV\HPCHEM1\MSVOA D\DATA\VD052119\
 Data File : VD062486.D
 Acq On : 21 May 2019 17:31
 Operator : VA/AP
 Sample : K2647-09
 Misc : 5.23g/5ml/MSVOA D/SOIL
 ALS Vial : 14 Sample Multiplier: 1

Instrument :
 MSVOA_D
 ClientSampleId :

Quant Time: May 22 01:45:09 2019
 Quant Method : Z:\VOASRV\HPCHEM1\MSVOA_D\METHOD\82D052019S.M
 Quant Title : SW846 8260
 QLast Update : Tue May 21 03:32:39 2019
 Response via : Initial Calibration

Internal Standards	R.T.	QIon	Response	Conc	Units	Dev(Min)
1) Pentafluorobenzene	7.04	168	204851	50.00	ug/l	-0.01
34) 1,4-Difluorobenzene	8.22	114	287949	50.00	ug/l	-0.01
63) Chlorobenzene-d5	12.36	117	229213	50.00	ug/l	-0.01
72) 1,4-Dichlorobenzene-d4	14.52	152	90766	50.00	ug/l	-0.01

System Monitoring Compounds

33) 1,2-Dichloroethane-d4	7.45	65	107134	48.86	ug/l	-0.01
Spiked Amount	50.000		Recovery	=	97.72%	
35) Dibromofluoromethane	6.92	113	102456	39.44	ug/l	-0.02
Spiked Amount	50.000		Recovery	=	78.88%	
50) Toluene-d8	10.41	98	182119	32.04	ug/l	-0.02
Spiked Amount	50.000		Recovery	=	64.08%	
62) 4-Bromofluorobenzene	13.56	95	75310	30.29	ug/l	-0.01
Spiked Amount	50.000		Recovery	=	60.58%	

Target Compounds

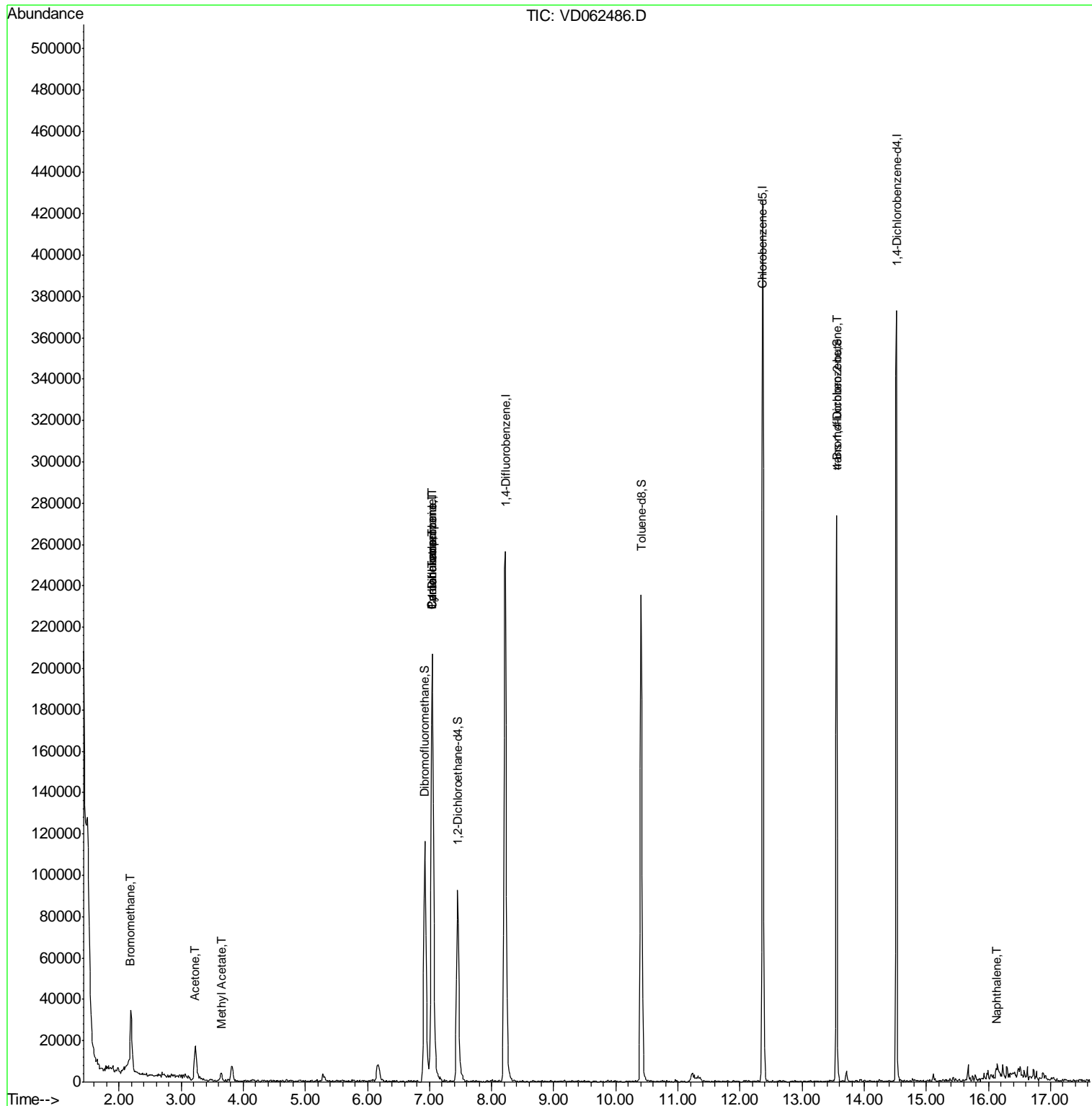
					Qvalue	
5) Bromomethane	2.18	94	1765	2.739	ug/l #	12
16) Acetone	3.22	43	37833	96.281	ug/l #	79
18) Methyl Acetate	3.64	43	7013	10.343	ug/l #	53
20) Methylene Chloride	3.82	84	4895	Below Cal	#	94
31) Cyclohexane	7.04	56	3739	1.806	ug/l #	27
36) 1,1-Dichloropropene	7.03	75	15476	5.622	ug/l #	47
38) Carbon Tetrachloride	7.05	117	21356	5.220	ug/l #	12
81) trans-1,4-Dichloro-2-buten	13.56	75	31043	102.955	ug/l #	16
95) Naphthalene	16.12	128	4125	1.573	ug/l #	96

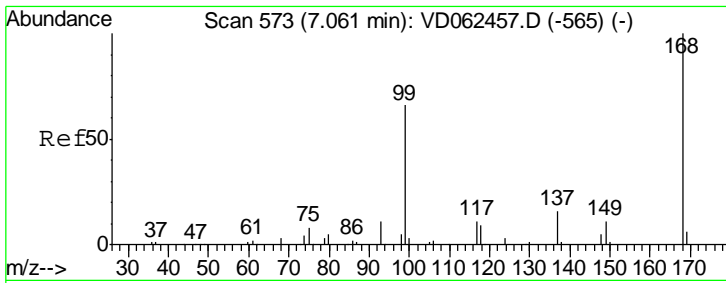
(#) = qualifier out of range (m) = manual integration (+) = signals summed

Data Path : Z:\VOASRV\HPCHEM1\MSVOA D\DATA\VD052119\
 Data File : VD062486.D
 Acq On : 21 May 2019 17:31
 Operator : VA/AP
 Sample : K2647-09
 Misc : 5.23g/5ml/MSVOA D/SOIL
 ALS Vial : 14 Sample Multiplier: 1

Instrument :
 MSVOA_D
 ClientSampled :

Quant Time: May 22 01:45:09 2019
 Quant Method : Z:\VOASRV\HPCHEM1\MSVOA_D\METHOD\82D052019S.M
 Quant Title : SW846 8260
 QLast Update : Tue May 21 03:32:39 2019
 Response via : Initial Calibration

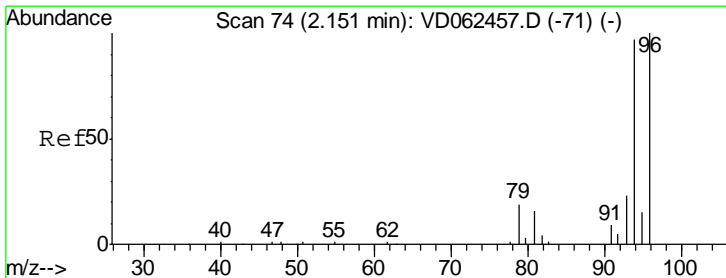
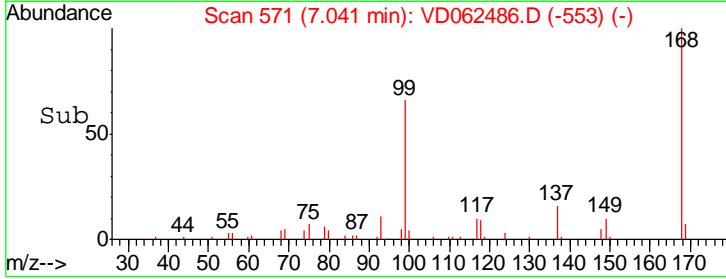
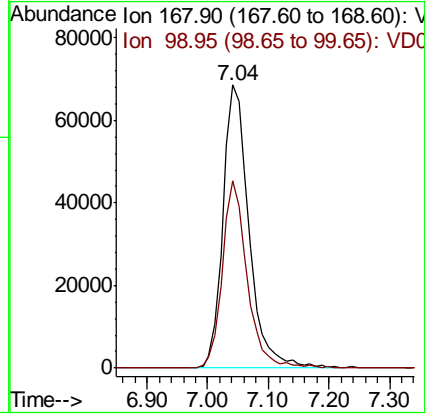
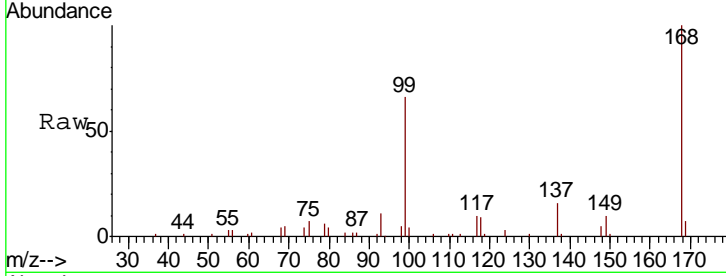




#1
 Pentafluorobenzene
 Concen: 50.000 ug/l
 RT: 7.04 min Scan# 571
 Delta R.T. -0.02 min
 Lab File: VD062486.D
 Acq: 21 May 2019 17:31

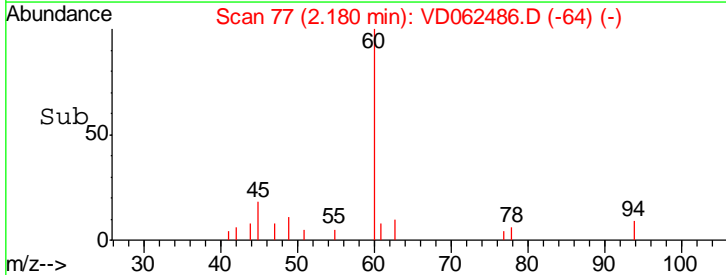
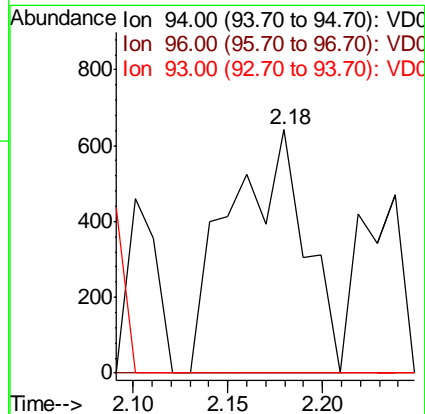
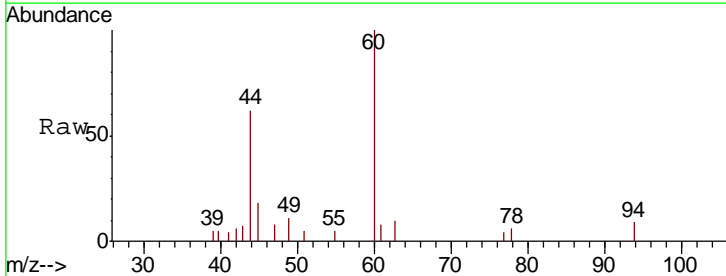
Instrument :
 MSVOA_D
 ClientSampled :

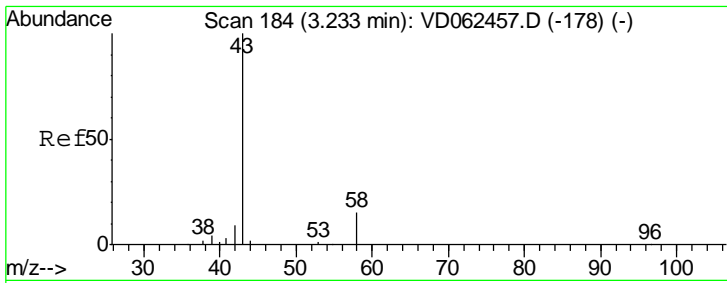
Tot Ion: 168 Resp: 204851
 Ion Ratio Lower Upper
 168 100
 99 66.0 46.5 69.7



#5
 Bromomethane
 Concen: 2.739 ug/l
 RT: 2.18 min Scan# 77
 Delta R.T. 0.03 min
 Lab File: VD062486.D
 Acq: 21 May 2019 17:31

Tgt Ion: 94 Resp: 1765
 Ion Ratio Lower Upper
 94 100
 96 0.0 76.6 115.0#
 93 0.0 18.5 27.7#

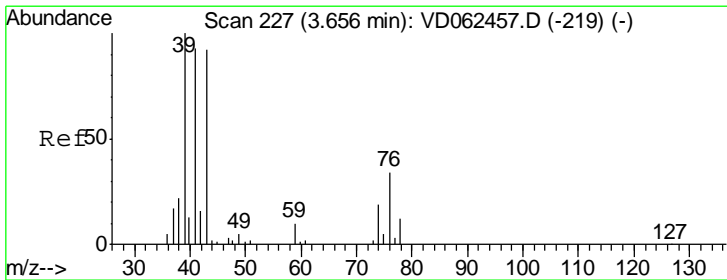
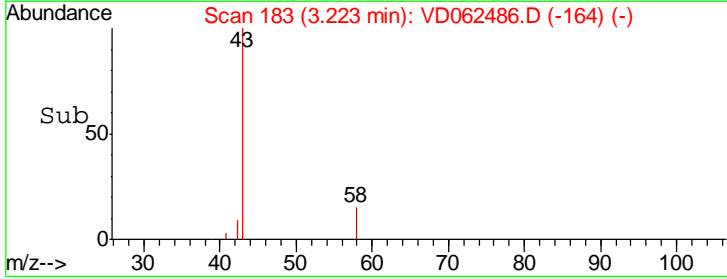
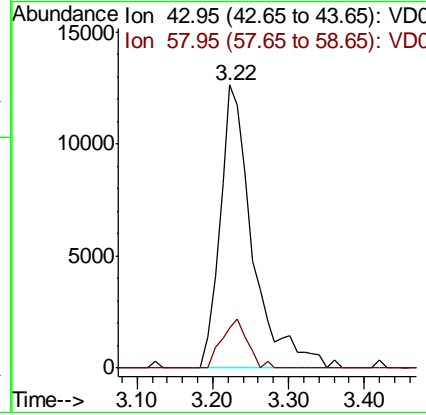
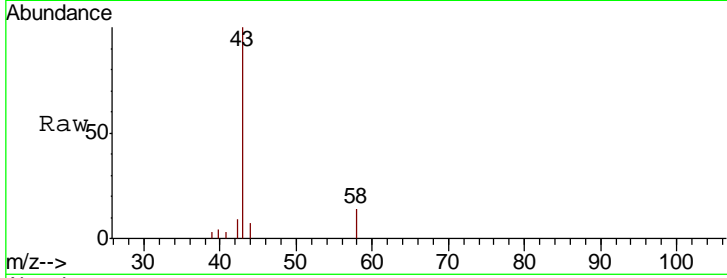




#16
 Acetone
 Concen: 96.281 ug/l
 RT: 3.22 min Scan# 183
 Delta R.T. -0.01 min
 Lab File: VD062486.D
 Acq: 21 May 2019 17:31

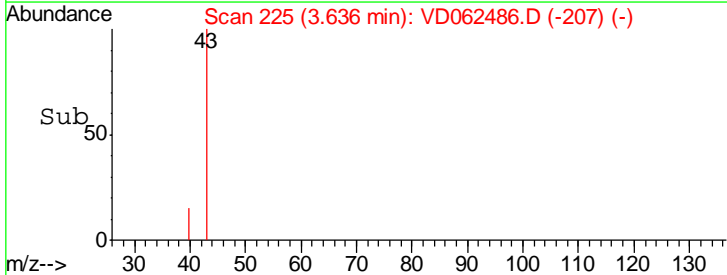
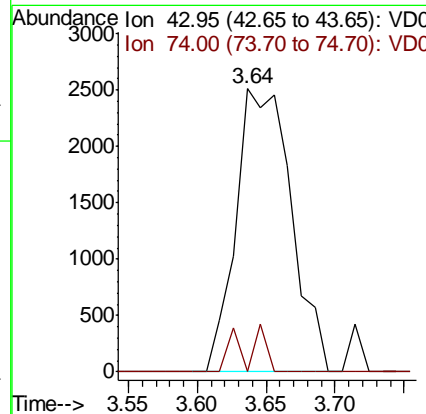
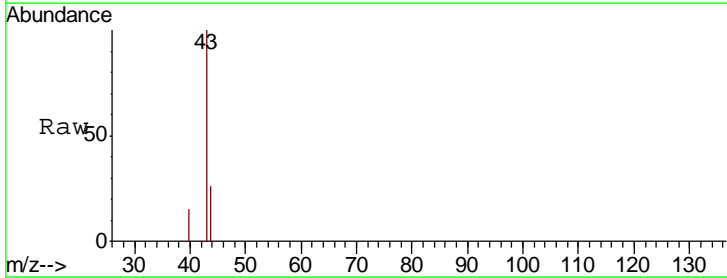
Instrument :
 MSVOA_D
 ClientSampled :

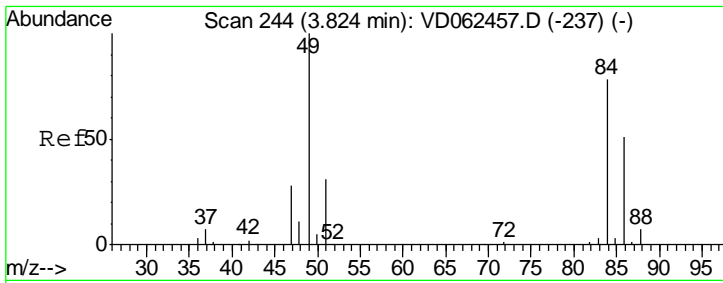
Tgt Ion	Resp	Lower	Upper
43	37833		
58	14.2	19.9	29.9#



#18
 Methyl Acetate
 Concen: 10.343 ug/l
 RT: 3.64 min Scan# 225
 Delta R.T. -0.02 min
 Lab File: VD062486.D
 Acq: 21 May 2019 17:31

Tgt Ion	Resp	Lower	Upper
43	7013		
74	0.0	18.0	27.0#

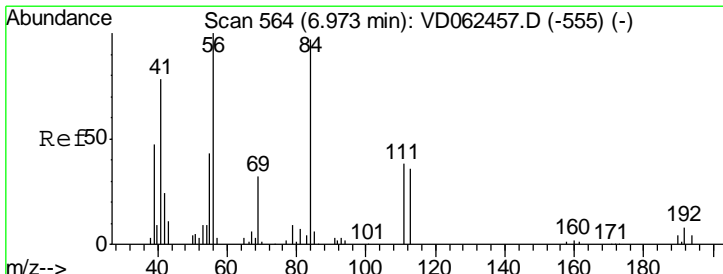
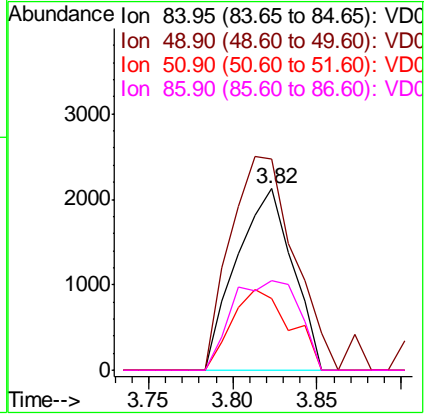
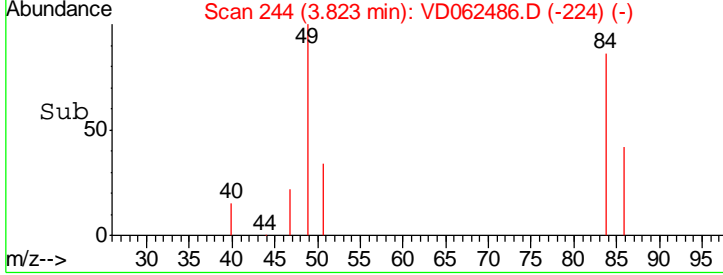
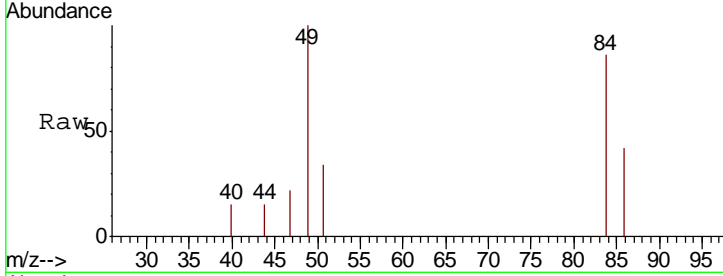




#20
 Methylene Chloride
 Concen: Below Cal
 RT: 3.82 min Scan# 244
 Delta R.T. 0.00 min
 Lab File: VD062486.D
 Acq: 21 May 2019 17:31

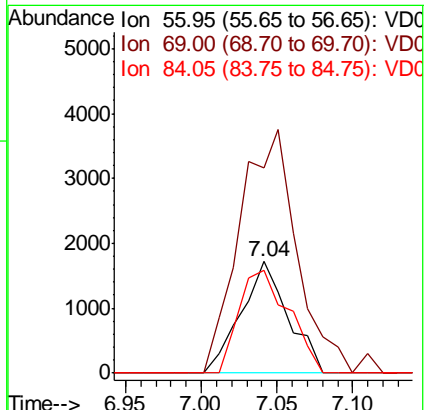
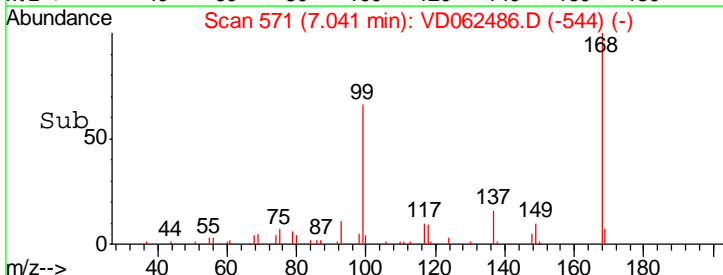
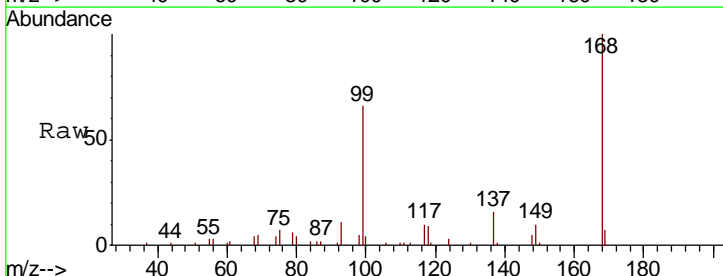
Instrument :
 MSVOA_D
 ClientSampled :

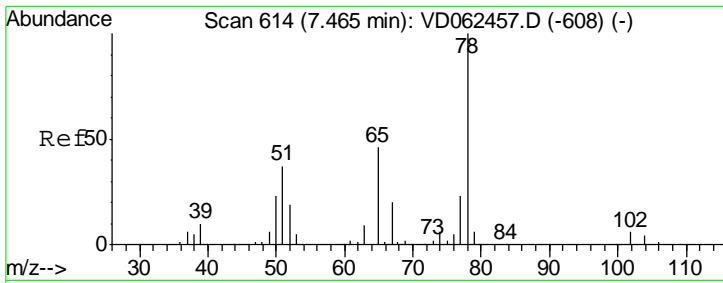
Tgt Ion	Resp	Lower	Upper
84	100		
49	116.4	94.0	141.0
51	39.3	29.0	43.4
86	49.2	49.8	74.6



#31
 Cyclohexane
 Concen: 1.806 ug/l
 RT: 7.04 min Scan# 571
 Delta R.T. 0.07 min
 Lab File: VD062486.D
 Acq: 21 May 2019 17:31

Tgt Ion	Resp	Lower	Upper
56	100		
69	184.1	25.8	38.6
84	92.2	72.2	108.4

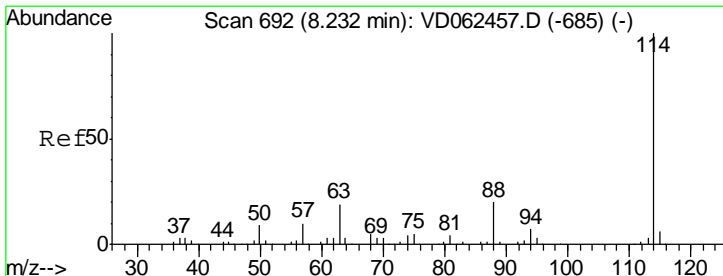
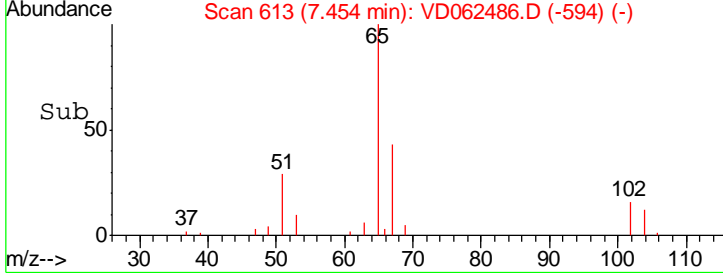
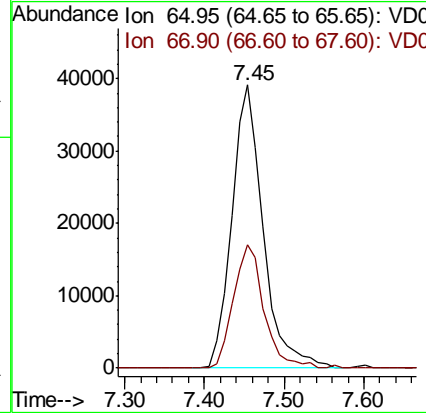
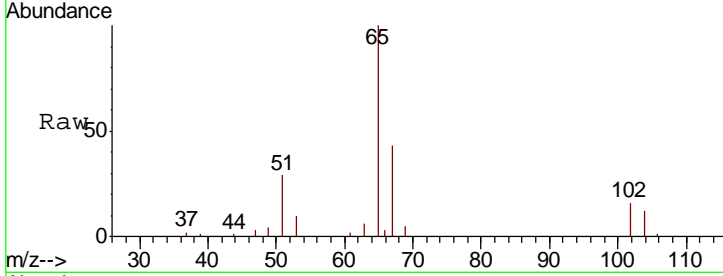




#33
 1,2-Dichloroethane-d4
 Concen: 48.857 ug/l
 RT: 7.45 min Scan# 613
 Delta R.T. -0.01 min
 Lab File: VD062486.D
 Acq: 21 May 2019 17:31

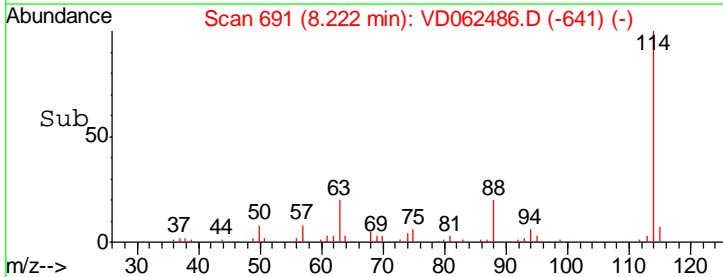
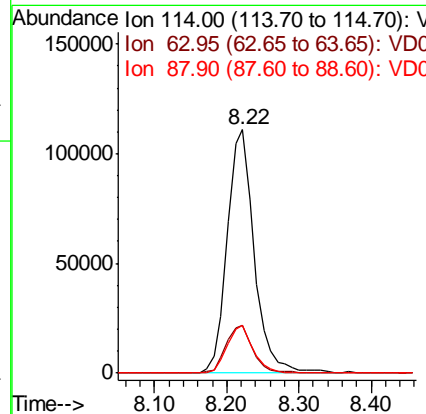
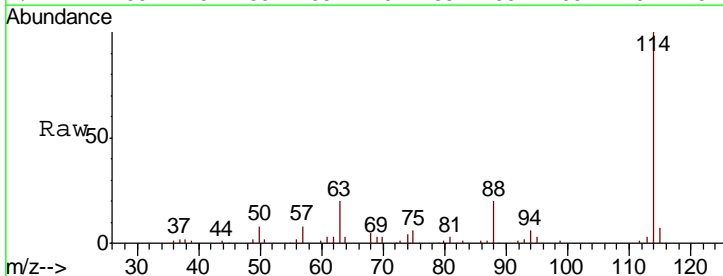
Instrument :
 MSVOA_D
 ClientSampled :

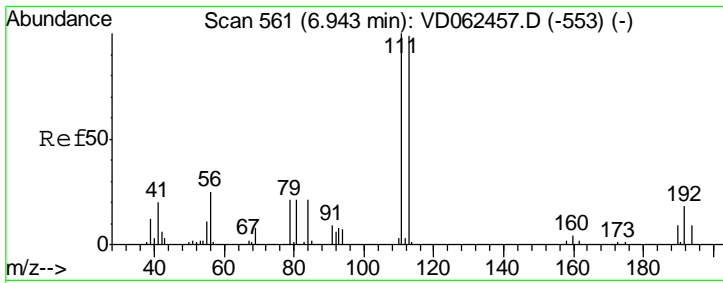
Tgt Ion	Resp	Lower	Upper
65	107134		
67	43.5	0.0	98.0



#34
 1,4-Difluorobenzene
 Concen: 50.000 ug/l
 RT: 8.22 min Scan# 691
 Delta R.T. -0.01 min
 Lab File: VD062486.D
 Acq: 21 May 2019 17:31

Tgt Ion	Resp	Lower	Upper
114	287949		
63	19.9	0.0	32.4
88	19.6	0.0	33.6

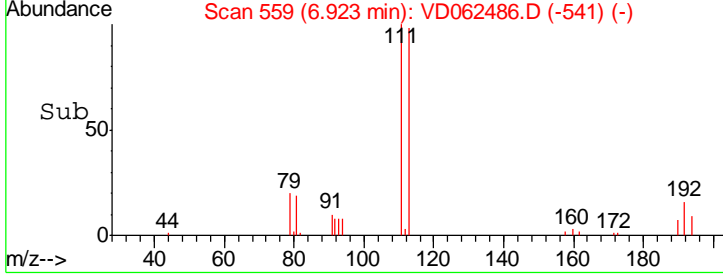
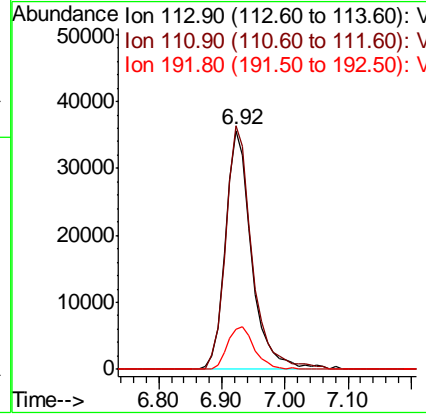
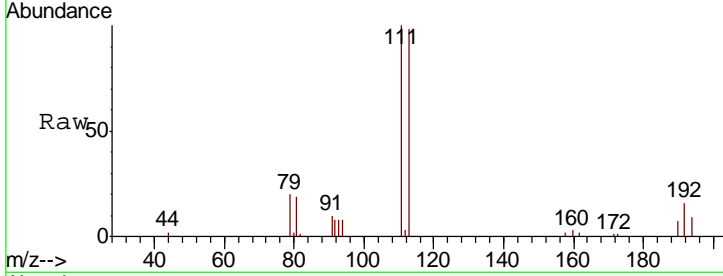




#35
 Dibromofluoromethane
 Concen: 39.442 ug/l
 RT: 6.92 min Scan# 559
 Delta R.T. -0.02 min
 Lab File: VD062486.D
 Acq: 21 May 2019 17:31

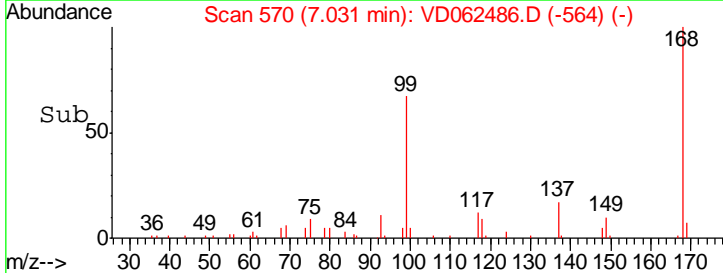
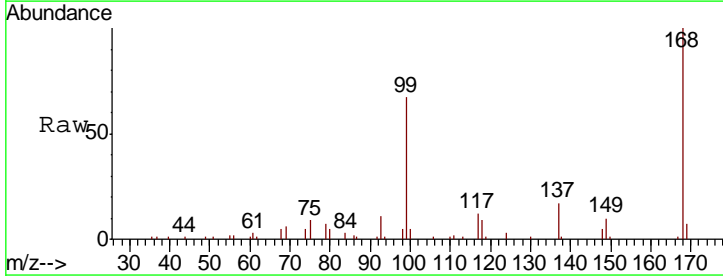
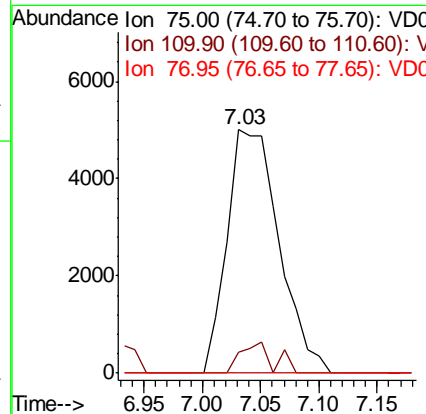
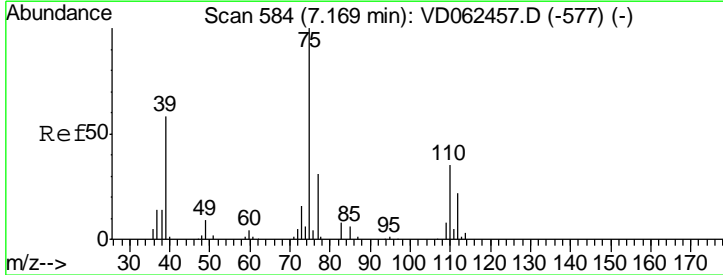
Instrument :
 MSVOA_D
 ClientSampled :

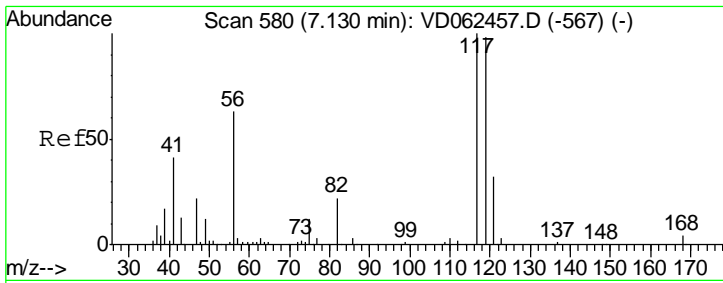
Tgt Ion	Resp	Lower	Upper
113	102456		
111	100	78.5	117.7
192	16.7	13.0	19.4



#36
 1,1-Dichloropropene
 Concen: 5.622 ug/l
 RT: 7.03 min Scan# 570
 Delta R.T. -0.14 min
 Lab File: VD062486.D
 Acq: 21 May 2019 17:31

Tgt Ion	Resp	Lower	Upper
75	15476		
110	100	19.1	57.1#
77	0.0	25.6	38.4#

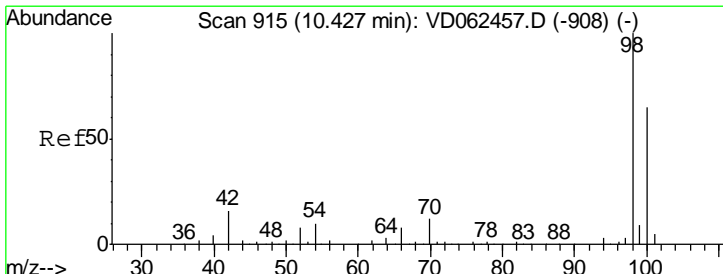
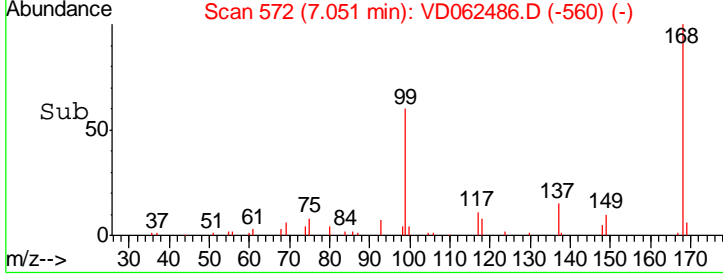
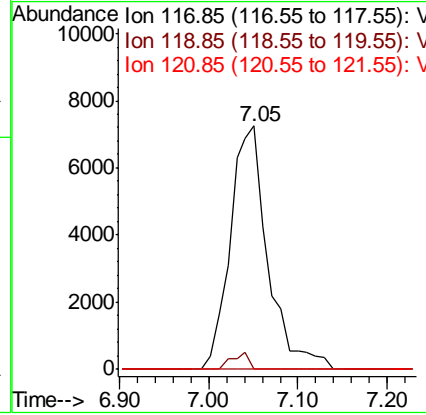
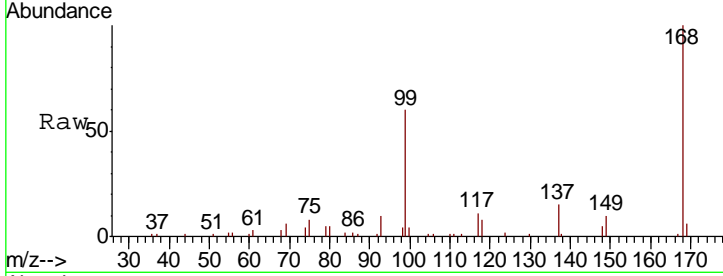




#38
 Carbon Tetrachloride
 Concen: 5.220 ug/l
 RT: 7.05 min Scan# 572
 Delta R.T. -0.08 min
 Lab File: VD062486.D
 Acq: 21 May 2019 17:31

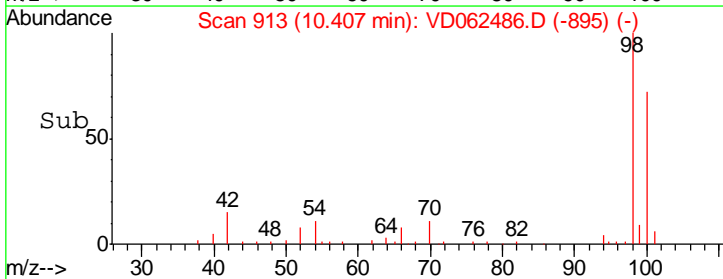
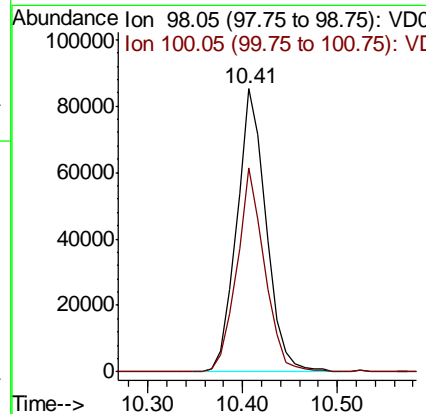
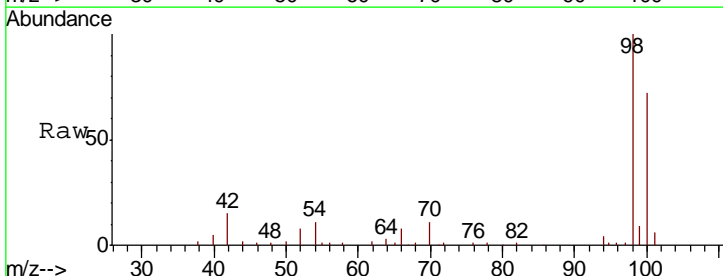
Instrument :
 MSVOA_D
 ClientSampled :

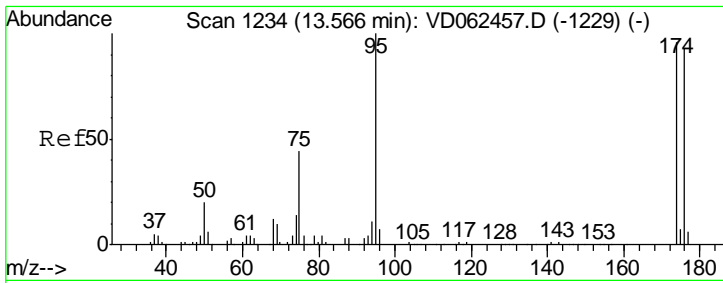
Tgt Ion	Resp	Lower	Upper
117	21356		
119	0.0	75.8	113.8#
121	0.0	25.9	38.9#



#50
 Toluene-d8
 Concen: 32.037 ug/l
 RT: 10.41 min Scan# 913
 Delta R.T. -0.02 min
 Lab File: VD062486.D
 Acq: 21 May 2019 17:31

Tgt Ion	Resp	Lower	Upper
98	182119		
100	72.2	53.8	80.8

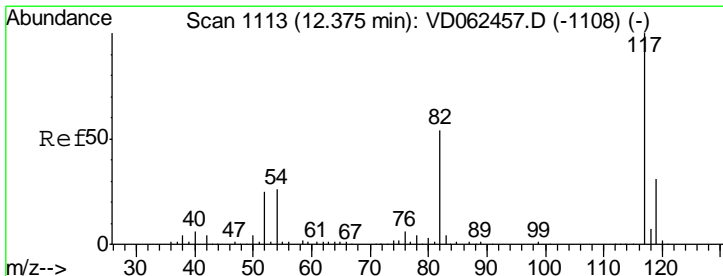
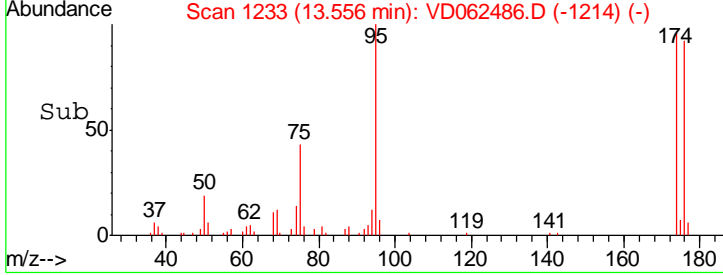
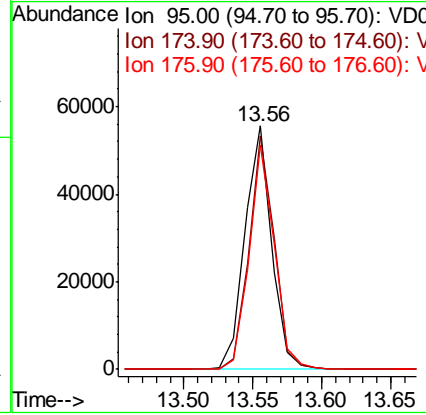
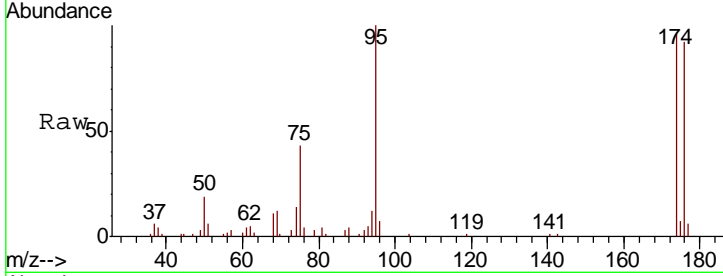




#62
 4-Bromofluorobenzene
 Concen: 30.285 ug/l
 RT: 13.56 min Scan# 1233
 Delta R.T. -0.01 min
 Lab File: VD062486.D
 Acq: 21 May 2019 17:31

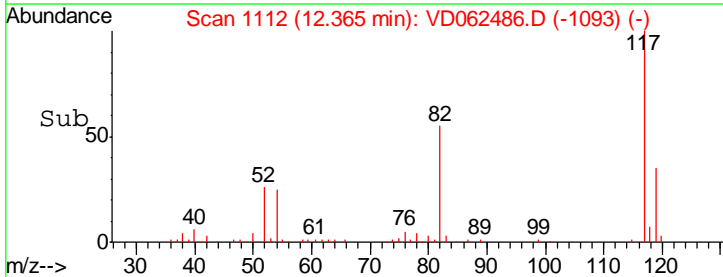
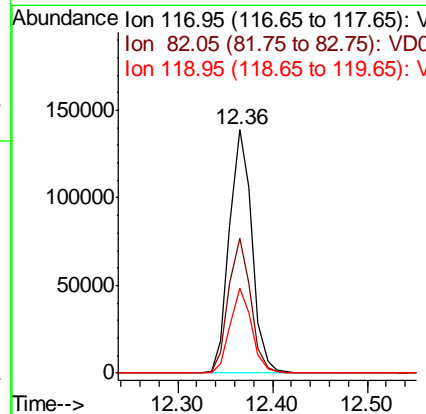
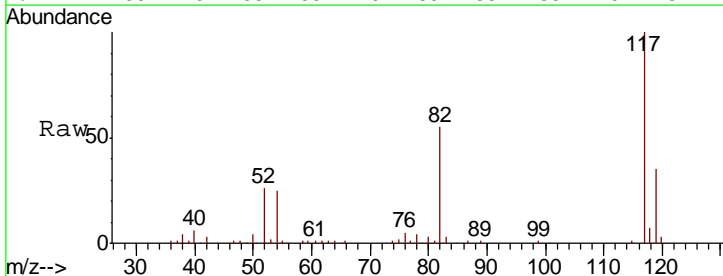
Instrument :
 MSVOA_D
 ClientSampled :

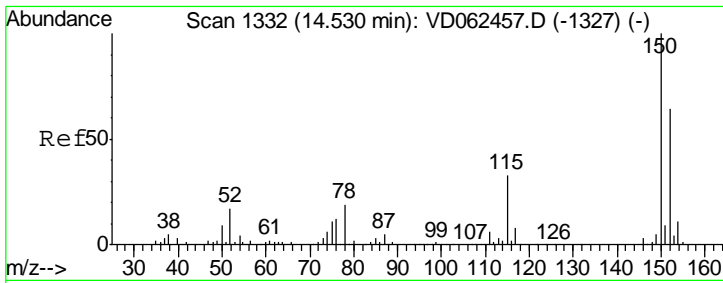
Tgt Ion	Resp	Lower	Upper
95	100		
174	95.9	0.0	181.8
176	92.1	0.0	174.4



#63
 Chlorobenzene-d5
 Concen: 50.000 ug/l
 RT: 12.36 min Scan# 1112
 Delta R.T. -0.01 min
 Lab File: VD062486.D
 Acq: 21 May 2019 17:31

Tgt Ion	Resp	Lower	Upper
117	100		
82	55.3	36.2	54.2#
119	34.8	26.2	39.4

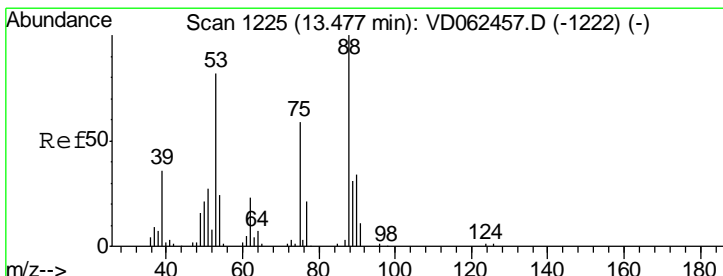
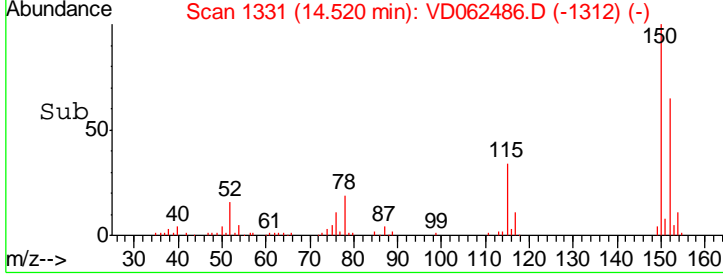
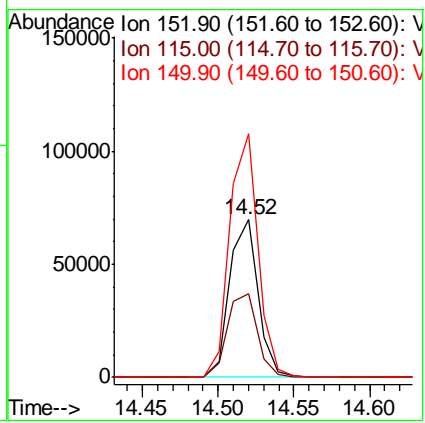
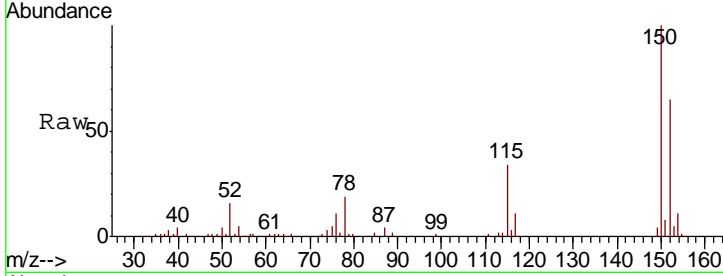




#72
 1,4-Dichlorobenzene-d4
 Concen: 50.000 ug/l
 RT: 14.52 min Scan# 1331
 Delta R.T. -0.01 min
 Lab File: VD062486.D
 Acq: 21 May 2019 17:31

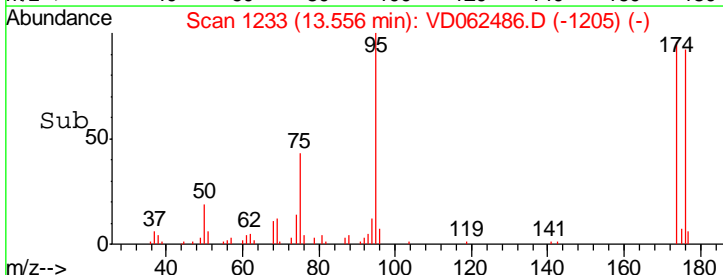
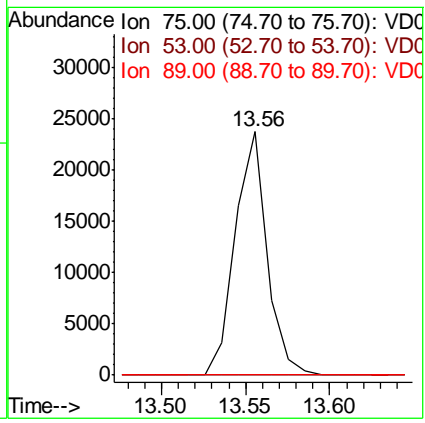
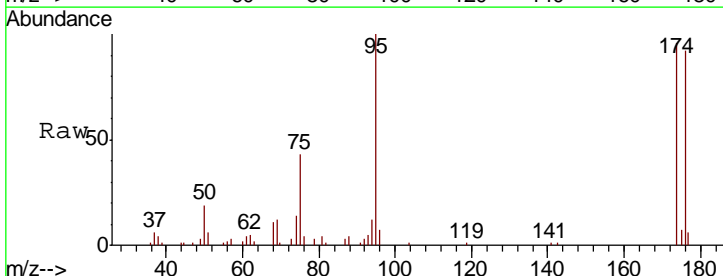
Instrument :
 MSVOA_D
 ClientSampled :

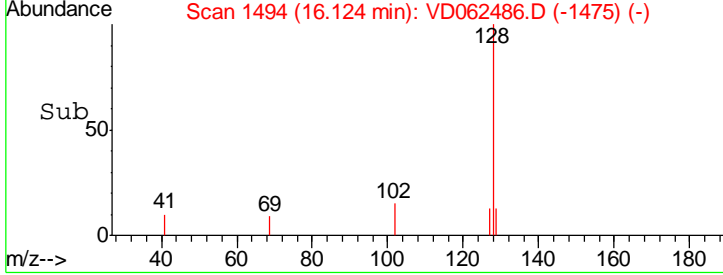
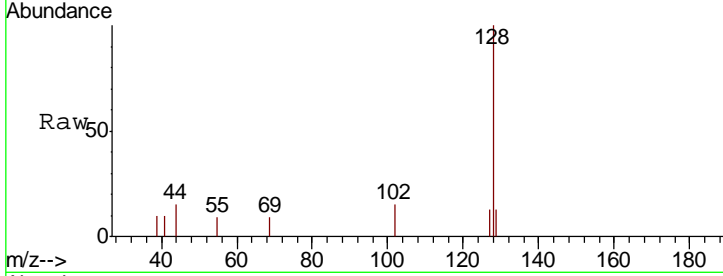
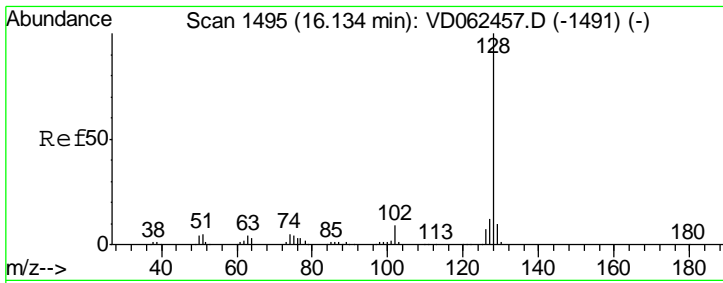
Tgt Ion	Resp	Lower	Upper
152	100		
115	52.9	30.9	92.7
150	154.4	0.0	314.8



#81
 trans-1,4-Dichloro-2-butene
 Concen: 102.955 ug/l
 RT: 13.56 min Scan# 1233
 Delta R.T. 0.08 min
 Lab File: VD062486.D
 Acq: 21 May 2019 17:31

Tgt Ion	Resp	Lower	Upper
75	100		
53	0.0	65.8	98.8#
89	0.0	35.0	52.6#





#95
 Naphthalene
 Concen: 1.573 ug/l
 RT: 16.12 min Scan# 1494
 Delta R.T. -0.01 min
 Lab File: VD062486.D
 Acq: 21 May 2019 17:31

Instrument : MSVOA_D
 ClientSampled :

Tot Ion	Resp	Lower	Upper
128	4125		
127	13.1	9.8	14.8
129	13.5	8.8	13.2#

