

Data Path : Z:\VOASRV\HPCHEM1\MSVOA D\DATA\VD052620\
 Data File : VD065762.D
 Acq On : 26 May 2020 15:17
 Operator : VA/SY
 Sample : L2768-03
 Misc : 7.11G/5.00ml/MSVOA D/SOIL
 ALS Vial : 9 Sample Multiplier: 1

Instrument :
 MSVOA_D
 ClientSampleId :

Quant Time: May 27 02:59:57 2020
 Quant Method : Z:\VOASRV\HPCHEM1\MSVOA_D\METHOD\82D051320S.M
 Quant Title : SW846 8260
 QLast Update : Wed May 13 14:28:42 2020
 Response via : Initial Calibration

Internal Standards	R.T.	QIon	Response	Conc	Units	Dev(Min)
1) Pentafluorobenzene	7.98	168	301918	50.00	ug/l	0.00
34) 1,4-Difluorobenzene	8.87	114	480091	50.00	ug/l	0.00
63) Chlorobenzene-d5	11.65	117	439893	50.00	ug/l	0.00
72) 1,4-Dichlorobenzene-d4	13.58	152	204921	50.00	ug/l	0.00

System Monitoring Compounds	R.T.	QIon	Response	Conc	Units	Dev(Min)
33) 1,2-Dichloroethane-d4	8.34	65	146994	60.42	ug/l	0.00
Spiked Amount				50.000		
Recovery				=	120.84%	
35) Dibromofluoromethane	7.92	113	150783	55.44	ug/l	0.00
Spiked Amount				50.000		
Recovery				=	110.88%	
50) Toluene-d8	10.34	98	576158	55.64	ug/l	0.00
Spiked Amount				50.000		
Recovery				=	111.28%	
62) 4-Bromofluorobenzene	12.64	95	195893	55.86	ug/l	0.00
Spiked Amount				50.000		
Recovery				=	111.72%	

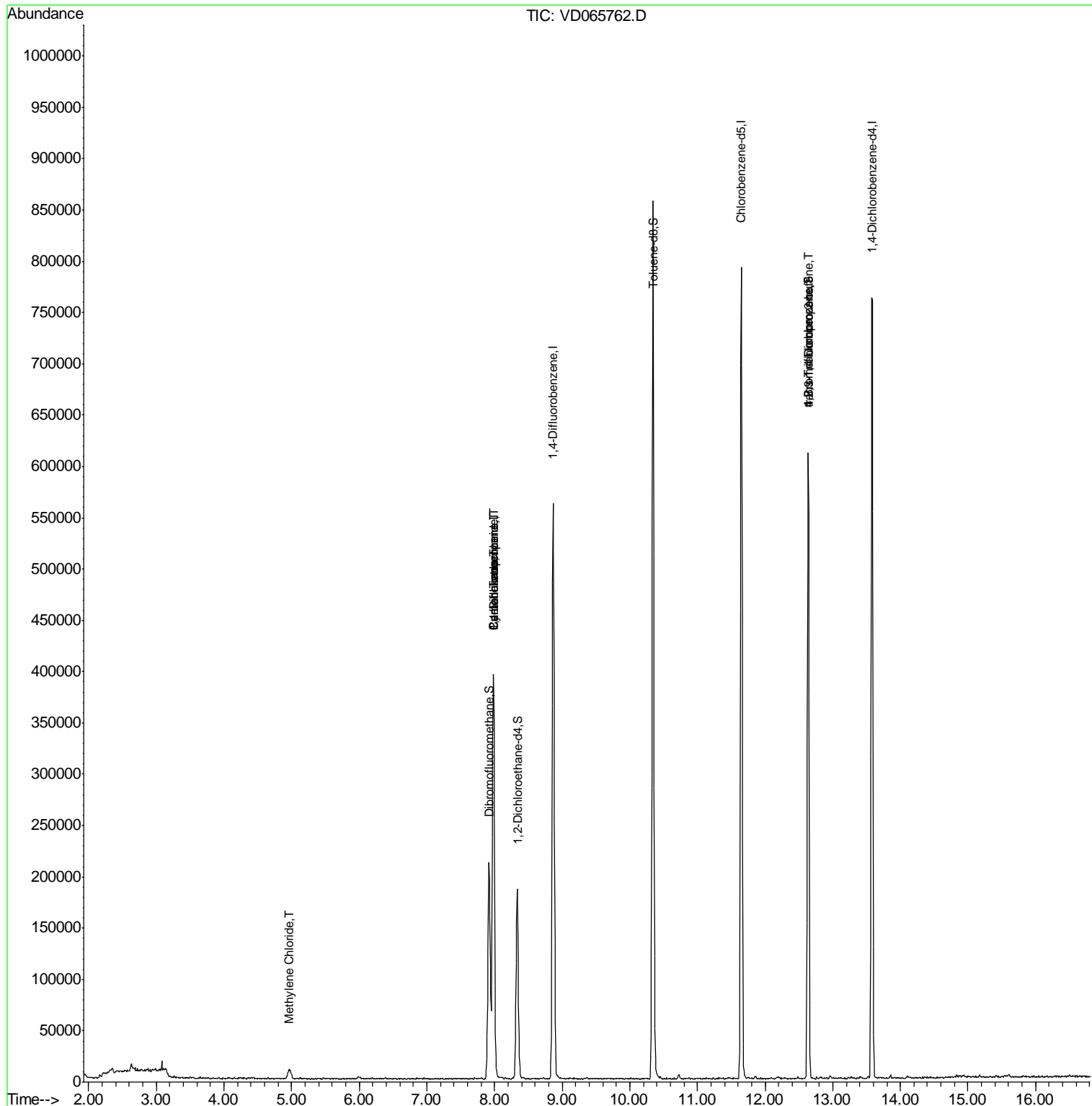
Target Compounds	R.T.	QIon	Response	Conc	Units	Qvalue
18) Methyl Acetate	4.75	43	57	Below Cal		# 52
20) Methylene Chloride	4.96	84	7360	2.614	ug/l	# 90
31) Cyclohexane	7.98	56	7112	1.471	ug/l	# 30
36) 1,1-Dichloropropene	7.98	75	24243	5.815	ug/l	# 49
38) Carbon Tetrachloride	7.98	117	30077	6.801	ug/l	# 16
76) 1,2,3-Trichloropropane	12.64	75	103323	67.561	ug/l	# 100
81) trans-1,4-Dichloro-2-buten	12.64	75	103323	132.543	ug/l	# 13

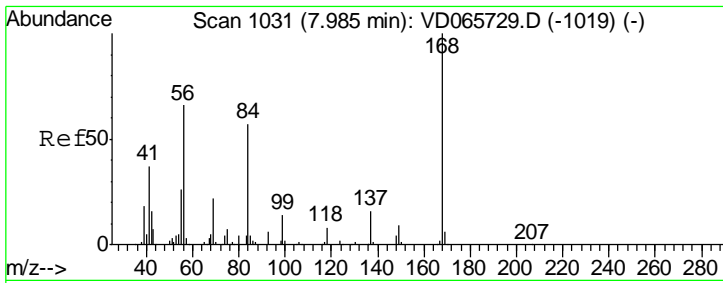
(#) = qualifier out of range (m) = manual integration (+) = signals summed

Data Path : Z:\VOASRV\HPCHEM1\MSVOA D\DATA\VD052620\
 Data File : VD065762.D
 Acq On : 26 May 2020 15:17
 Operator : VA/SY
 Sample : L2768-03
 Misc : 7.11G/5.00ml/MSVOA D/SOIL
 ALS Vial : 9 Sample Multiplier: 1

Instrument :
 MSVOA_D
 ClientSampleID :

Quant Time: May 27 02:59:57 2020
 Quant Method : Z:\VOASRV\HPCHEM1\MSVOA_D\METHOD\82D051320S.M
 Quant Title : SW846 8260
 QLast Update : Wed May 13 14:28:42 2020
 Response via : Initial Calibration

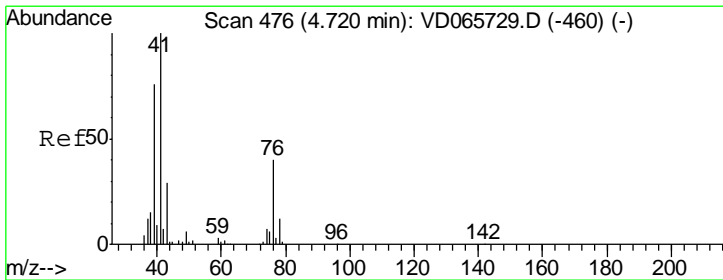
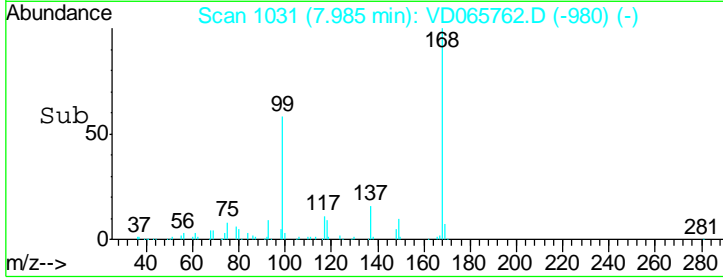
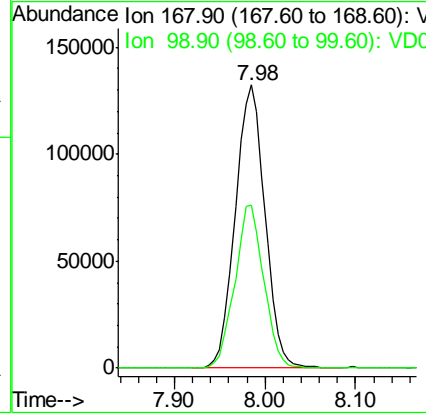
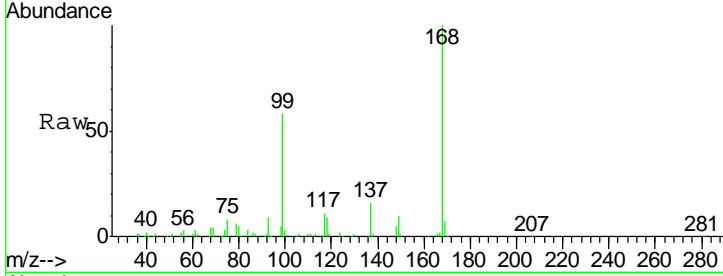




#1
 Pentafluorobenzene
 Concen: 50.000 ug/l
 RT: 7.98 min Scan# 1031
 Delta R.T. 0.00 min
 Lab File: VD065762.D
 Acq: 26 May 2020 15:17

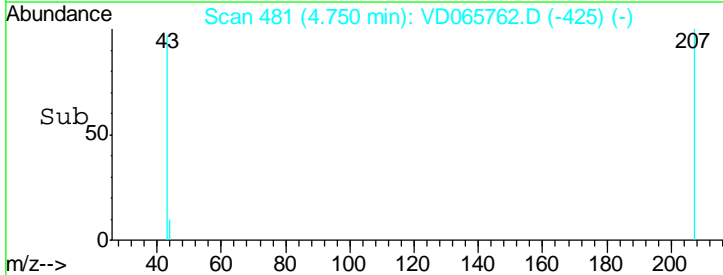
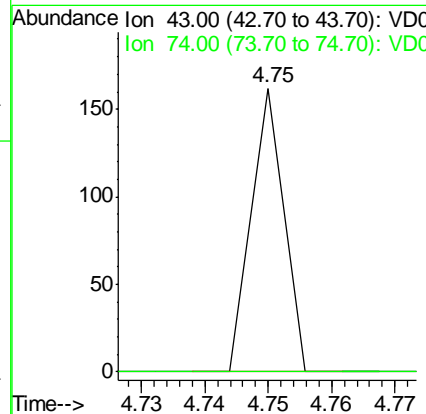
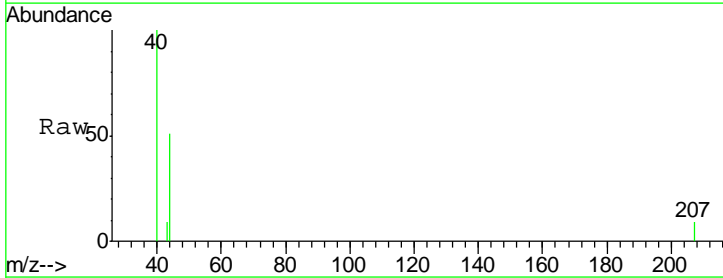
Instrument :
 MSVOA_D
 ClientSampled :

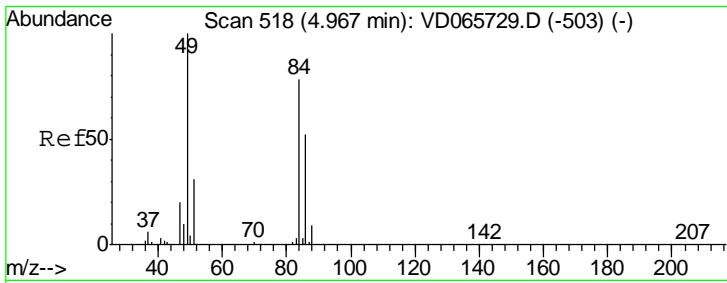
Tgt Ion	Resp	Lower	Upper
168	100		
99	57.6	40.6	60.8



#18
 Methyl Acetate
 Concen: Below Cal
 RT: 4.75 min Scan# 481
 Delta R.T. 0.03 min
 Lab File: VD065762.D
 Acq: 26 May 2020 15:17

Tgt Ion	Resp	Lower	Upper
43	100		
74	0.0	18.6	27.8#

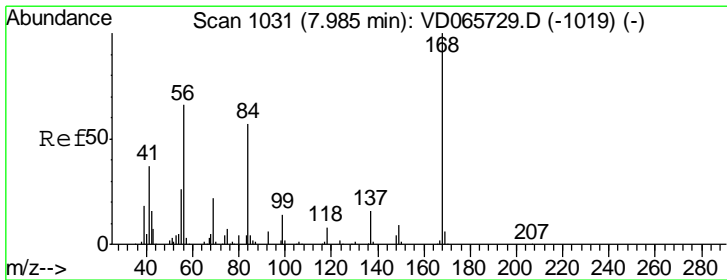
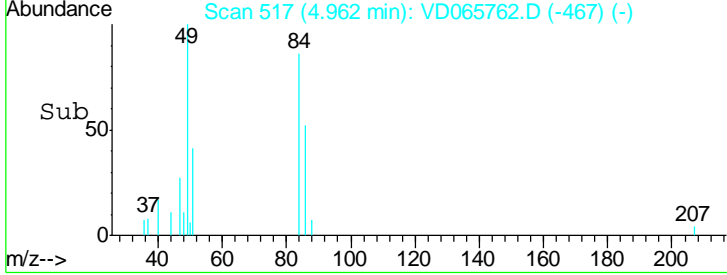
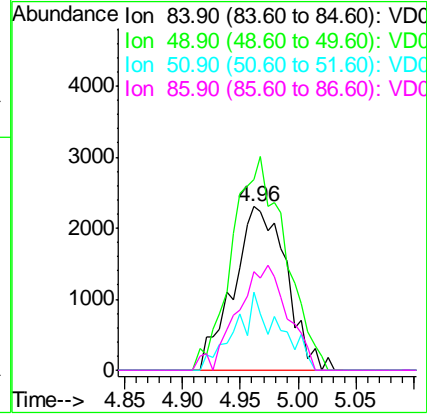
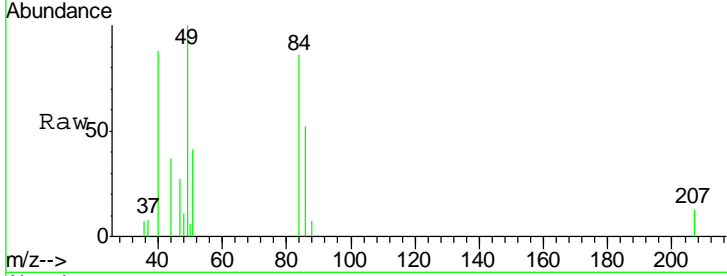




#20
Methylene Chloride
Concen: 2.614 ug/l
RT: 4.96 min Scan# 517
Delta R.T. -0.01 min
Lab File: VD065762.D
Acq: 26 May 2020 15:17

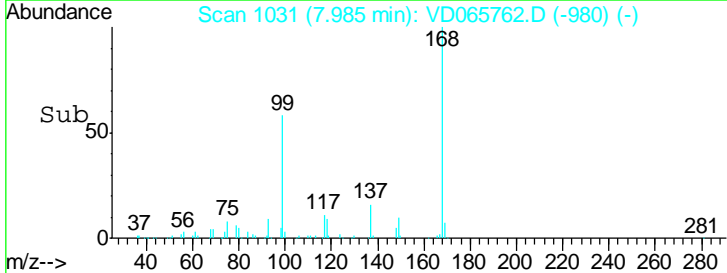
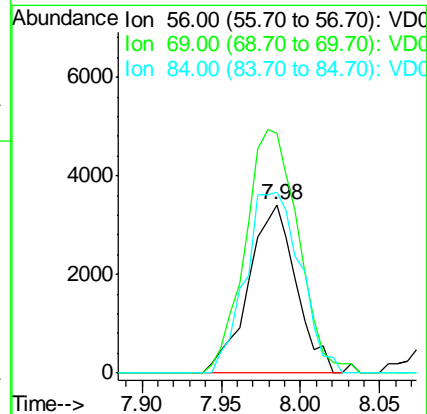
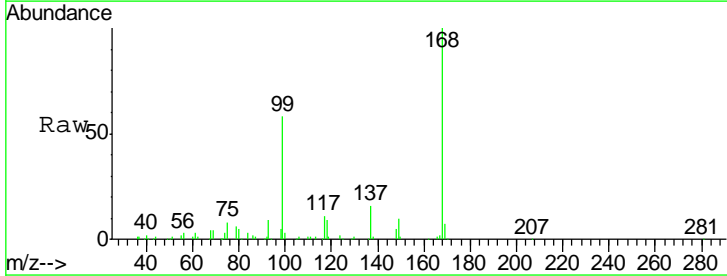
Instrument :
MSVOA_D
ClientSampled :

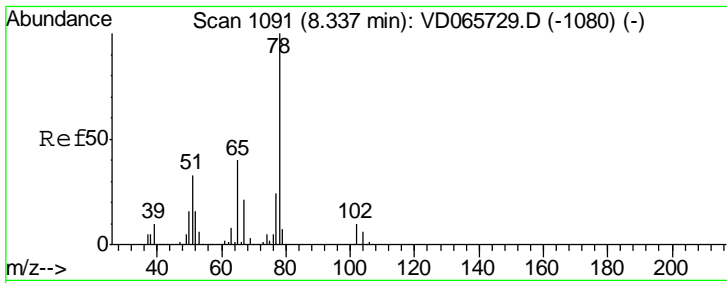
Tgt Ion	Resp	Lower	Upper
84	100		
49	116.6	102.9	154.3
51	47.5	31.5	47.3#
86	60.6	53.6	80.4



#31
Cyclohexane
Concen: 1.471 ug/l
RT: 7.98 min Scan# 1031
Delta R.T. 0.00 min
Lab File: VD065762.D
Acq: 26 May 2020 15:17

Tgt Ion	Resp	Lower	Upper
56	100		
69	142.2	25.9	38.9#
84	107.2	69.1	103.7#

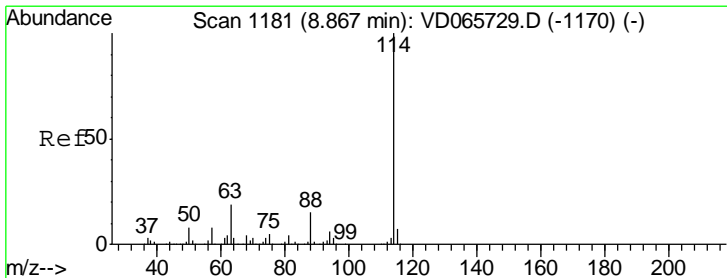
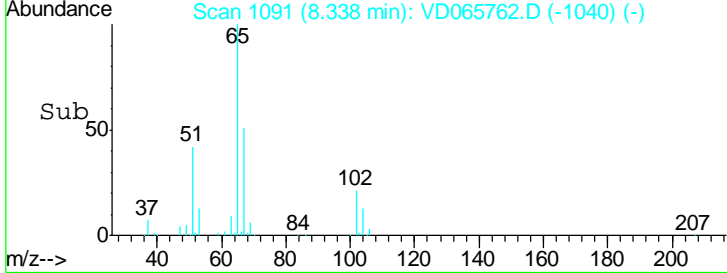
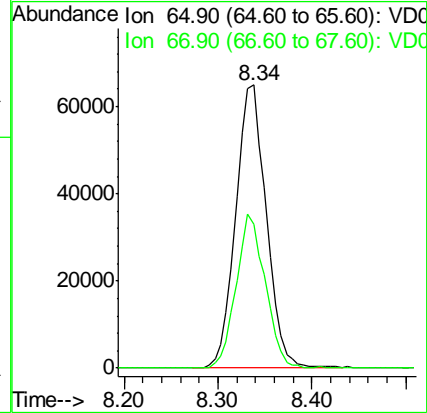
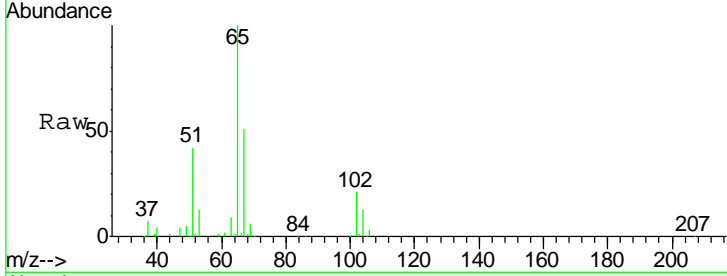




#33
 1,2-Dichloroethane-d4
 Concen: 60.416 ug/l
 RT: 8.34 min Scan# 1091
 Delta R.T. 0.00 min
 Lab File: VD065762.D
 Acq: 26 May 2020 15:17

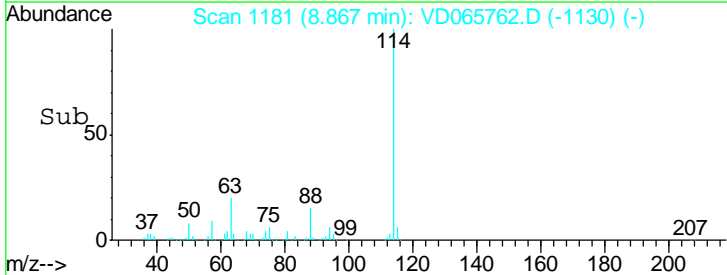
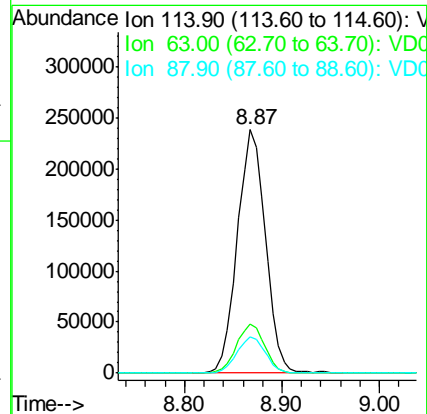
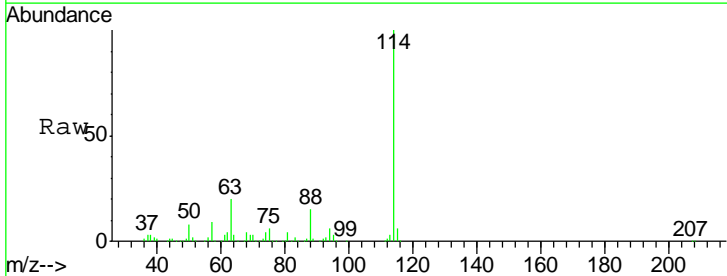
Instrument :
 MSVOA_D
 ClientSampled :

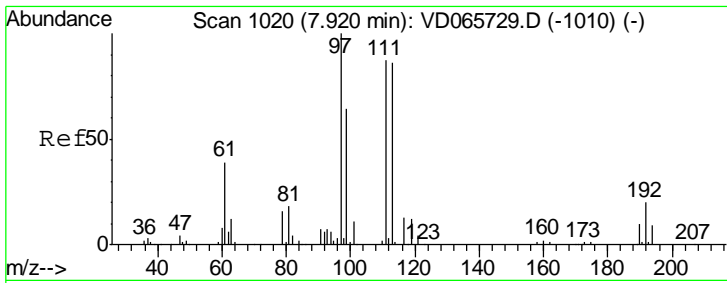
Tgt Ion	Resp	Lower	Upper
65	146994		
67	51.6	0.0	106.2



#34
 1,4-Difluorobenzene
 Concen: 50.000 ug/l
 RT: 8.87 min Scan# 1181
 Delta R.T. 0.00 min
 Lab File: VD065762.D
 Acq: 26 May 2020 15:17

Tgt Ion	Resp	Lower	Upper
114	480091		
63	20.1	0.0	37.2
88	15.0	0.0	30.2

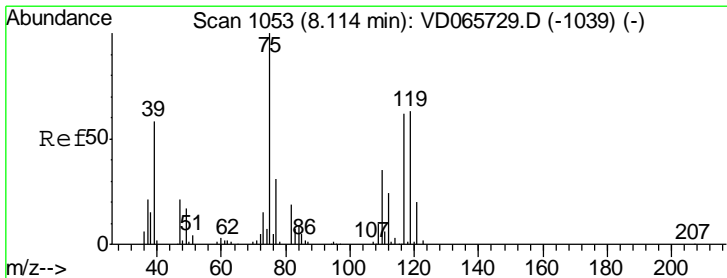
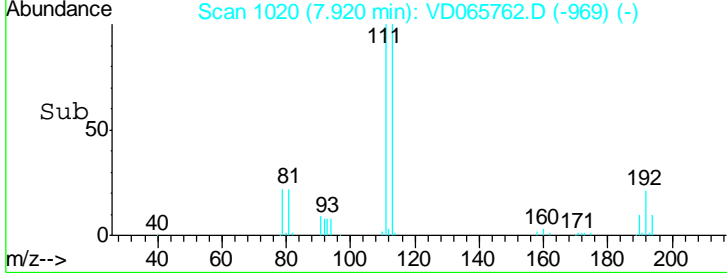
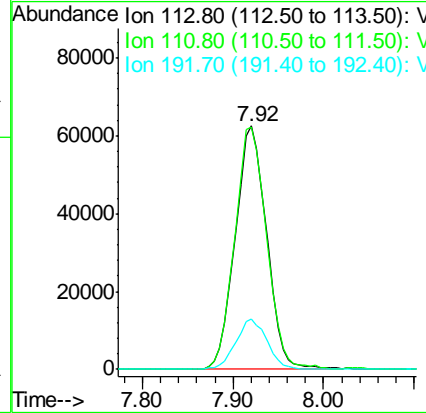
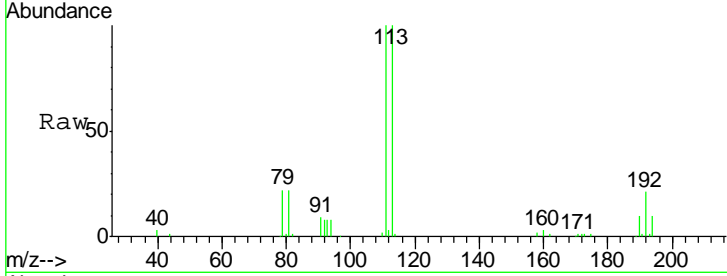




#35
 Dibromofluoromethane
 Concen: 55.438 ug/l
 RT: 7.92 min Scan# 1020
 Delta R.T. 0.00 min
 Lab File: VD065762.D
 Acq: 26 May 2020 15:17

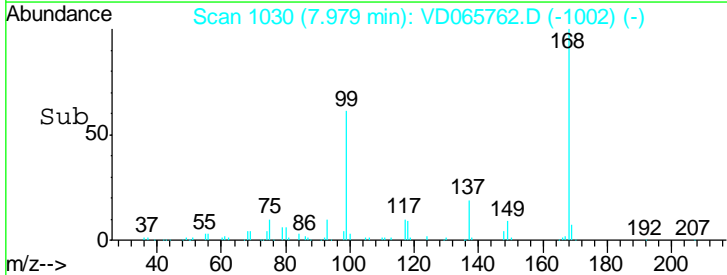
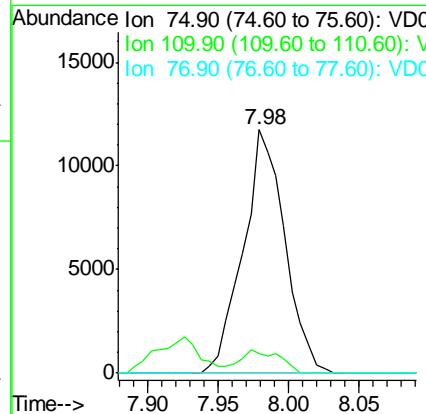
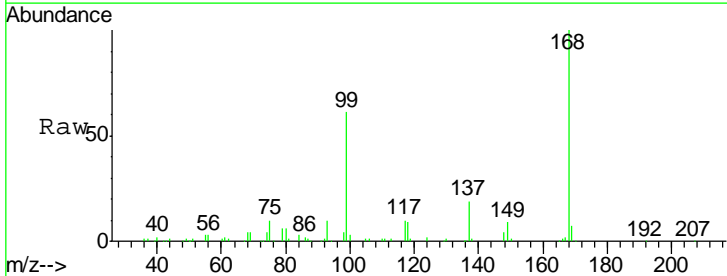
Instrument : MSVOA_D
 ClientSampled :

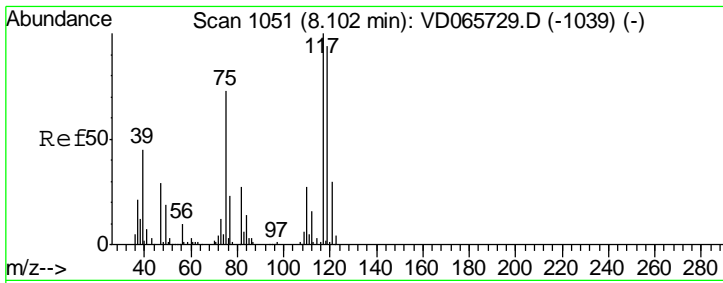
Tot Ion:	113	Resp:	150783
Ion Ratio	Lower	Upper	
113	100		
111	101.1	81.1	121.7
192	20.4	17.6	26.4



#36
 1,1-Dichloropropene
 Concen: 5.815 ug/l
 RT: 7.98 min Scan# 1030
 Delta R.T. -0.13 min
 Lab File: VD065762.D
 Acq: 26 May 2020 15:17

Tgt Ion:	75	Resp:	24243
Ion Ratio	Lower	Upper	
75	100		
110	8.8	18.4	55.2#
77	0.0	24.6	37.0#

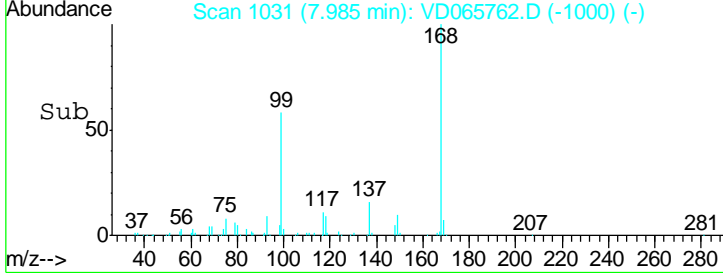
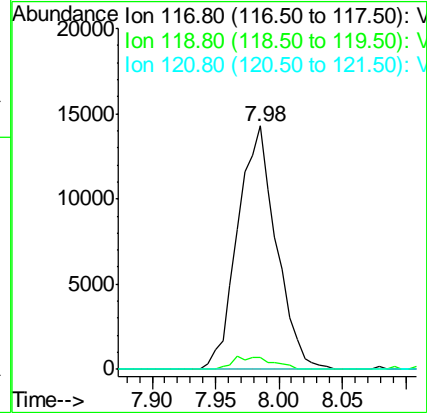
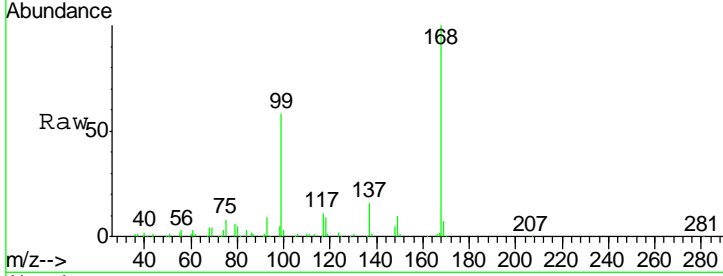




#38
 Carbon Tetrachloride
 Concen: 6.801 ug/l
 RT: 7.98 min Scan# 1031
 Delta R.T. -0.12 min
 Lab File: VD065762.D
 Acq: 26 May 2020 15:17

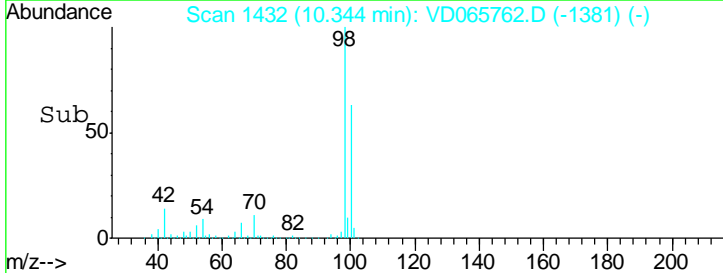
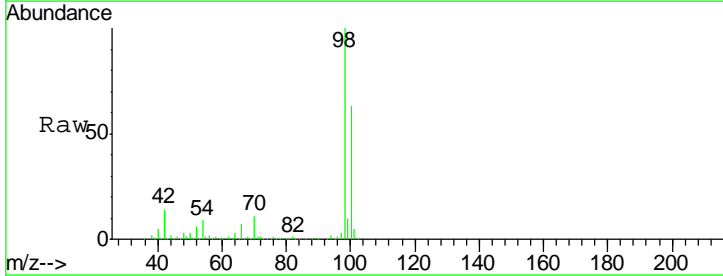
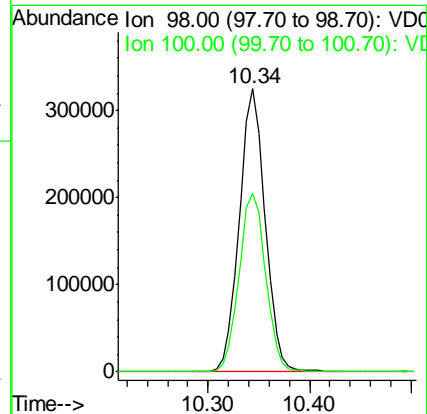
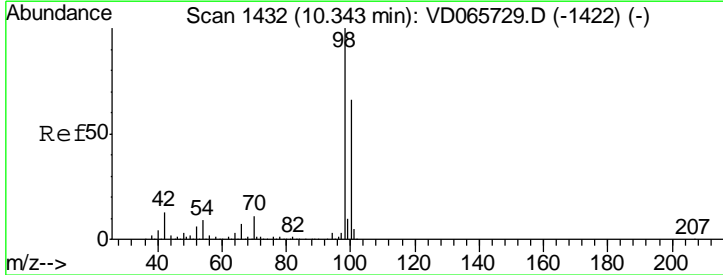
Instrument :
 MSVOA_D
 ClientSampled :

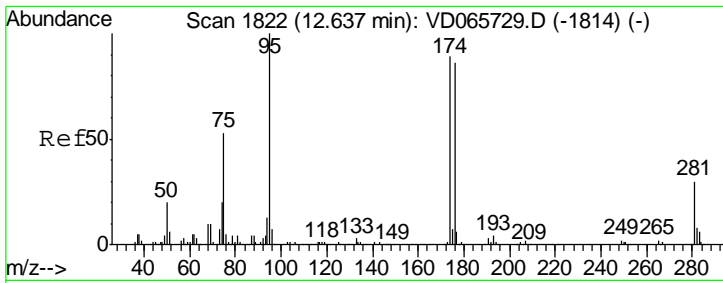
Tgt Ion	Resp	Lower	Upper
117	30077		
119	4.9	75.6	113.4#
121	0.0	24.4	36.6#



#50
 Toluene-d8
 Concen: 55.642 ug/l
 RT: 10.34 min Scan# 1432
 Delta R.T. 0.00 min
 Lab File: VD065762.D
 Acq: 26 May 2020 15:17

Tgt Ion	Resp	Lower	Upper
98	576158		
100	65.0	52.5	78.7

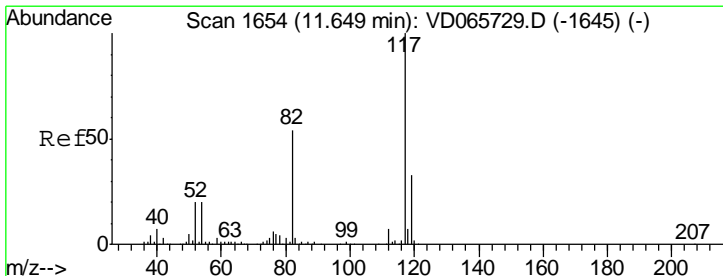
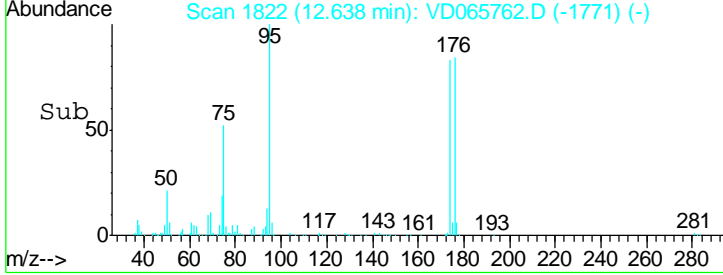
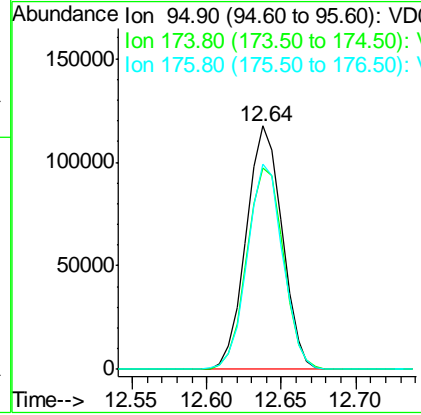
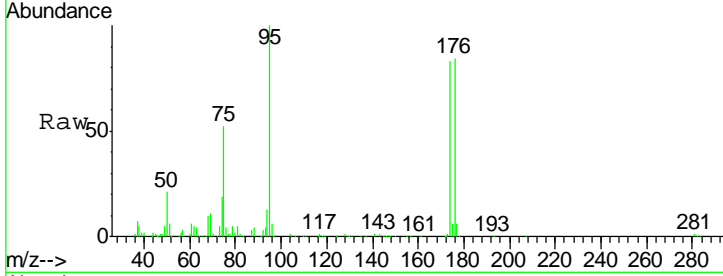




#62
 4-Bromofluorobenzene
 Concen: 55.861 ug/l
 RT: 12.64 min Scan# 1822
 Delta R.T. 0.00 min
 Lab File: VD065762.D
 Acq: 26 May 2020 15:17

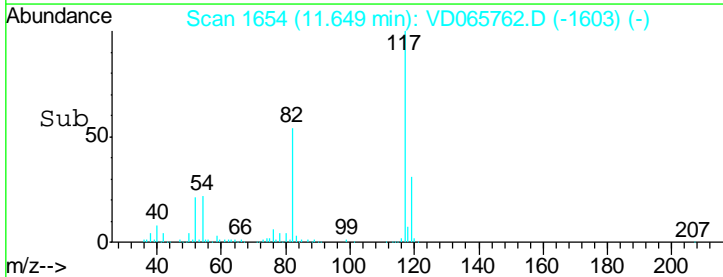
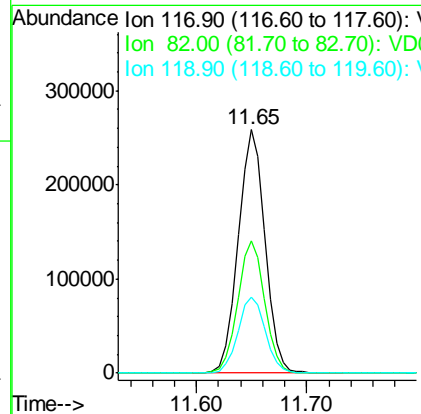
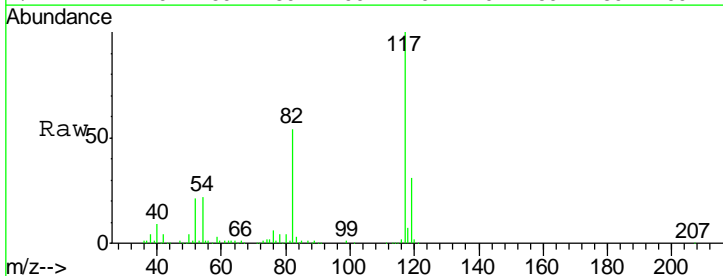
Instrument :
 MSVOA_D
 ClientSampled :

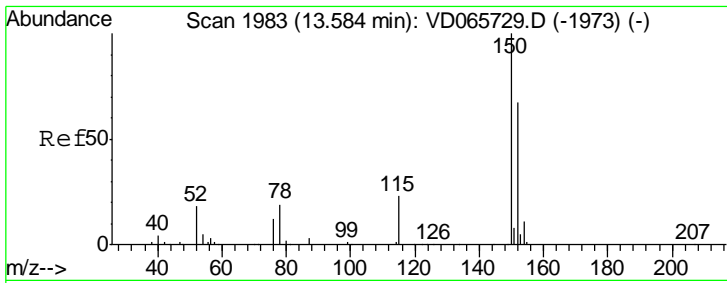
Tgt Ion	Resp	Lower	Upper
95	195893		
174	84.3	0.0	179.4
176	82.9	0.0	174.0



#63
 Chlorobenzene-d5
 Concen: 50.000 ug/l
 RT: 11.65 min Scan# 1654
 Delta R.T. 0.00 min
 Lab File: VD065762.D
 Acq: 26 May 2020 15:17

Tgt Ion	Resp	Lower	Upper
117	439893		
82	54.2	43.0	64.6
119	31.3	26.6	40.0

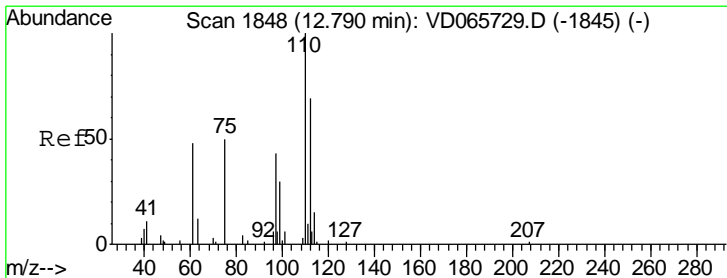
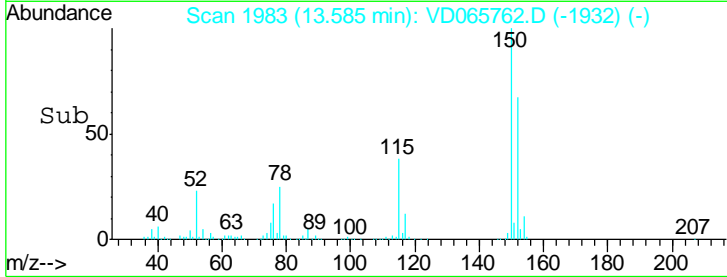
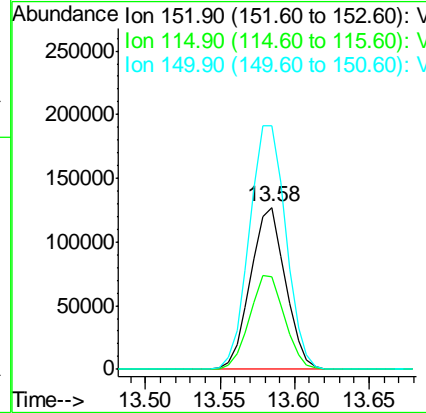
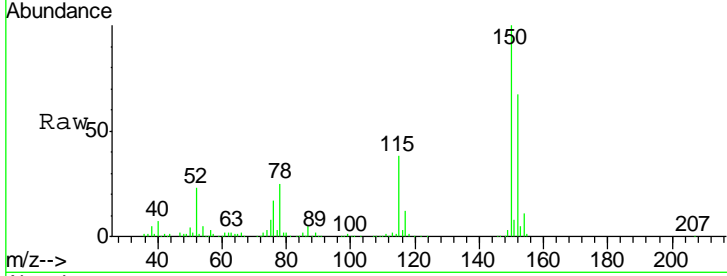




#72
 1,4-Dichlorobenzene-d4
 Concen: 50.000 ug/l
 RT: 13.58 min Scan# 1983
 Delta R.T. 0.00 min
 Lab File: VD065762.D
 Acq: 26 May 2020 15:17

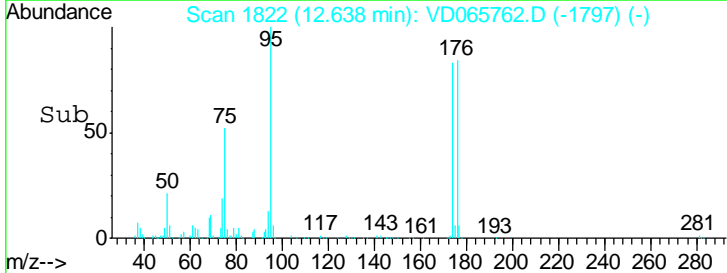
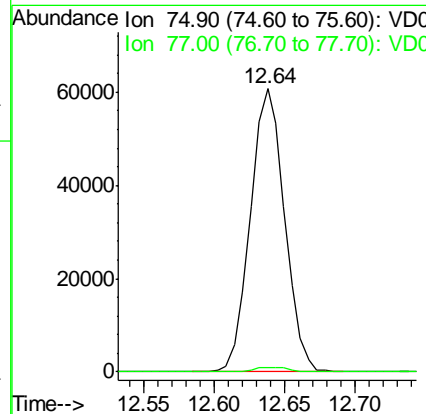
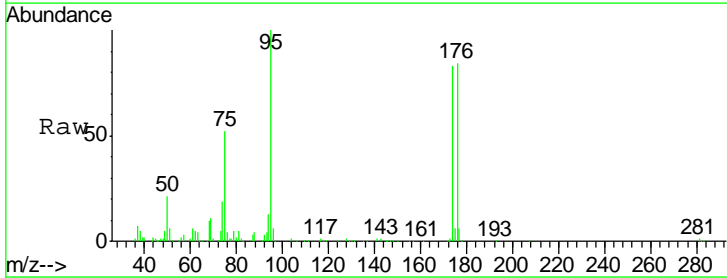
Instrument :
 MSVOA_D
 ClientSampled :

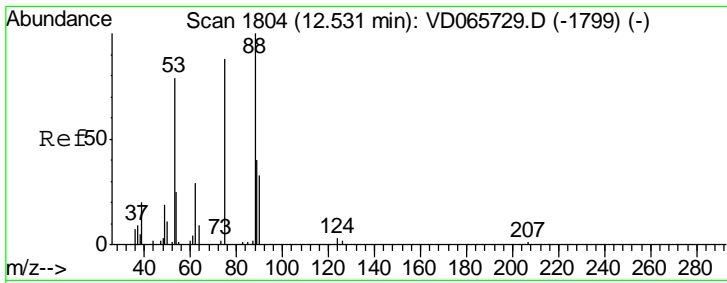
Tgt Ion	Resp	Lower	Upper
152	100		
115	58.3	28.1	84.3
150	158.2	0.0	343.2



#76
 1,2,3-Trichloropropane
 Concen: 67.561 ug/l
 RT: 12.64 min Scan# 1822
 Delta R.T. -0.15 min
 Lab File: VD065762.D
 Acq: 26 May 2020 15:17

Tgt Ion	Resp	Lower	Upper
75	100		
77	1.4	0.0	0.0#





#81
 trans-1,4-Dichloro-2-butene
 Concen: 132.543 ug/l
 RT: 12.64 min Scan# 1822
 Delta R.T. 0.11 min
 Lab File: VD065762.D
 Acq: 26 May 2020 15:17

Instrument :
 MSVOA_D
 ClientSampled :

Tot Ion	Resp	Lower	Upper
75	100		
53	0.0	72.6	109.0#
89	0.1	37.0	55.4#

