

Data Path : Z:\voasrv\HPCHEM1\MSVOA_D\Data\VD052924\
 Data File : VD079061.D
 Acq On : 29 May 2024 13:27
 Operator : RP/MD
 Sample : VD0529SBL01
 Misc : 5.00G/10ml/MSVOA_D/SOIL
 ALS Vial : 12 Sample Multiplier: 1

Instrument :
 MSVOA_D
ClientSampleId :

Quant Time: May 30 01:11:26 2024
 Quant Method : Z:\voasrv\HPCHEM1\MSVOA_D\Method\SFAMDLM052924SMA.M
 Quant Title : SFAM01.0
 QLast Update : Thu May 30 01:09:48 2024
 Response via : Initial Calibration

Compound	R.T.	QI on	Response	Conc	Units	Dev(Min)
Internal Standards						
1) 1,4-Difluorobenzene	8.781	114	184804	25.000	ug/L	0.00
28) Chlorobenzene-d5	11.581	117	188035	25.000	ug/L	0.00
58) 1,4-Dichlorobenzene-d4	13.516	152	74264	25.000	ug/L	0.00
System Monitoring Compounds						
4) Vinyl Chloride-d3	2.275	65	133016	23.390	ug/L	0.00
Spike Amount	25.000	Range	30 - 150	Recovery	=	93.560%
7) Chloroethane-d5	2.805	69	136822	24.882	ug/L	0.00
Spike Amount	25.000	Range	30 - 150	Recovery	=	99.520%
11) 1,1-Dichloroethane-d2	3.911	65	23627	23.403	ug/L	0.00
Spike Amount	25.000	Range	45 - 110	Recovery	=	93.600%
21) 2-Butanone-d5	6.987	46	20119	46.253	ug/L	0.00
Spike Amount	50.000	Range	20 - 135	Recovery	=	92.500%
24) Chloroform-d	7.569	84	119739	23.173	ug/L	0.00
Spike Amount	25.000	Range	40 - 150	Recovery	=	92.680%
26) 1,2-Dichloroethane-d4	8.228	65	58052	24.354	ug/L	0.00
Spike Amount	25.000	Range	70 - 130	Recovery	=	97.400%
32) Benzene-d6	8.204	84	246218	23.621	ug/L	0.00
Spike Amount	25.000	Range	20 - 135	Recovery	=	94.480%
36) 1,2-Dichloropropane-d6	9.210	67	68587	22.842	ug/L	0.00
Spike Amount	25.000	Range	70 - 120	Recovery	=	91.360%
41) Toluene-d8	10.269	98	222215	22.768	ug/L	0.00
Spike Amount	25.000	Range	30 - 130	Recovery	=	91.080%
43) trans-1,3-Dichloropropene	10.522	79	28594	22.656	ug/L	0.00
Spike Amount	25.000	Range	30 - 135	Recovery	=	90.640%
47) 2-Hexanone-d5	10.875	63	17494	45.067	ug/L	0.00
Spike Amount	50.000	Range	20 - 135	Recovery	=	90.140%
56) 1,1,2,2-Tetrachloroethane	12.645	84	56598	21.280	ug/L	0.00
Spike Amount	25.000	Range	45 - 120	Recovery	=	85.120%
66) 1,2-Dichlorobenzene-d4	13.816	152	66050	25.771	ug/L	0.00
Spike Amount	25.000	Range	75 - 120	Recovery	=	103.080%
Target Compounds						
6) Bromomethane	2.699	94	1354	0.273	ug/L	87
16) Methylene chloride	4.799	84	13827	4.199	ug/L	98
25) Chloroform	7.593	83	1415	0.280	ug/L #	71
42) Toluene	10.334	91	1833	0.147	ug/L	80
44) trans-1,3-Dichloropropene	10.528	75	1537	0.424	ug/L #	68
48) 2-Hexanone	10.881	43	1920	1.938	ug/L #	66
51) Chlorobenzene	11.604	112	1456	0.176	ug/L #	63
52) Ethyl benzene	11.681	91	1437	0.111	ug/L #	81
60) Isopropyl benzene	12.416	105	1124	0.114	ug/L #	64
62) 1,3,5-Tri methyl benzene	13.210	105	1250	0.186	ug/L	89
63) 1,2,4-Tri methyl benzene	13.210	105	1250	0.174	ug/L	94
64) 1,3-Dichlorobenzene	13.457	146	1223	0.259	ug/L #	79
65) 1,4-Dichlorobenzene	13.534	146	1323	0.265	ug/L #	51
67) 1,2-Dichlorobenzene	13.834	146	1305	0.299	ug/L #	76
69) 1,3,5-Tri chlorobenzene	14.598	180	660	0.222	ug/L #	89
70) 1,2,4-tri chlorobenzene	15.104	180	772	0.312	ug/L #	46

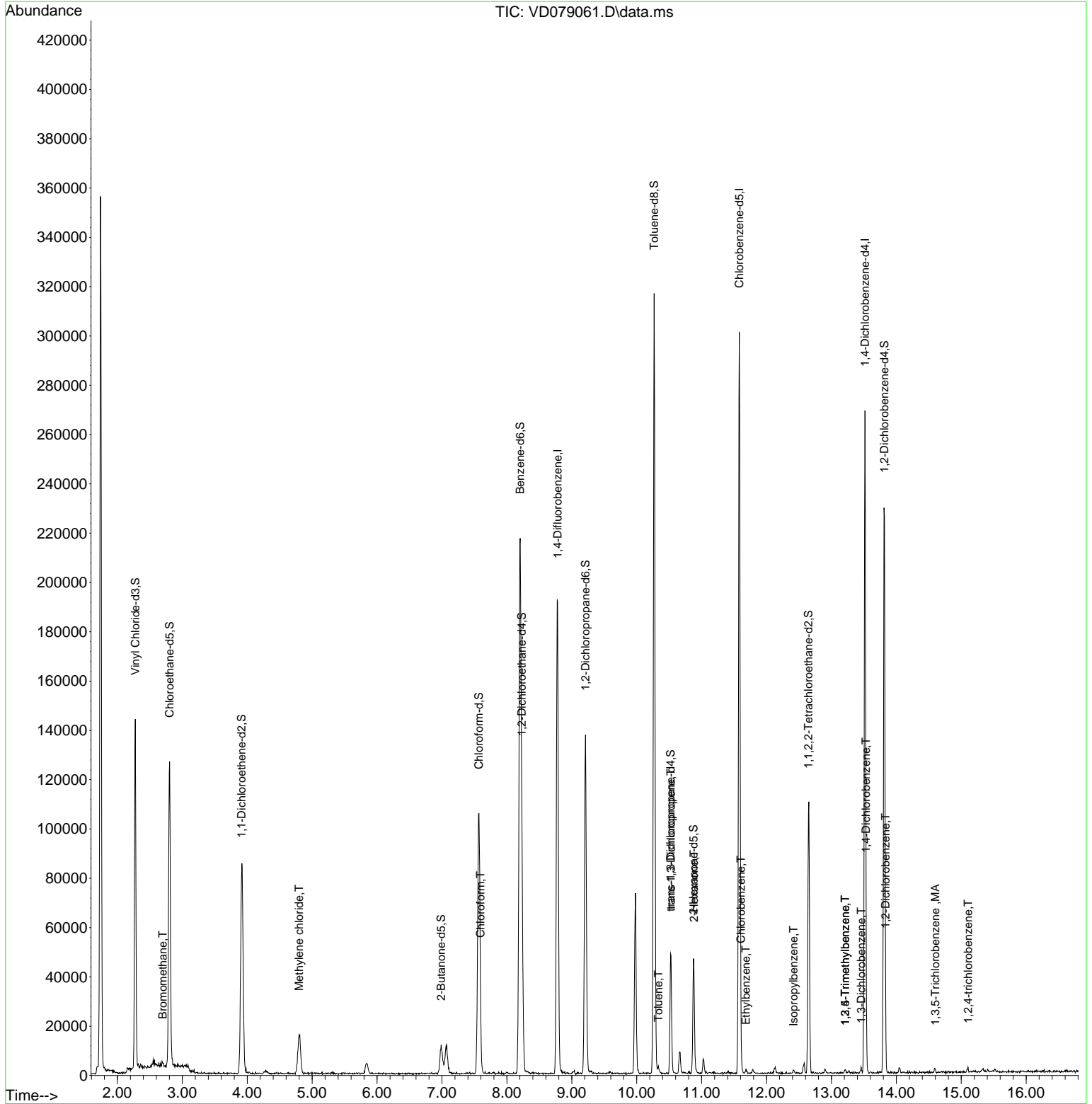
(#) = qualifier out of range (m) = manual integration (+) = signals summed

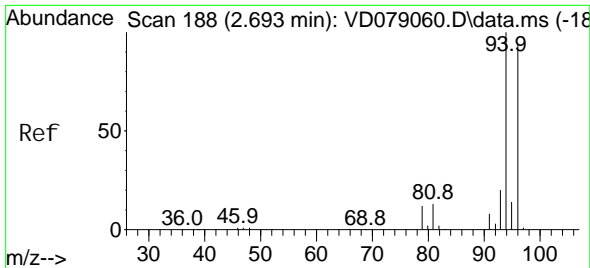
Instrument :
MSVOA_D
ClientSampleId :

Data Path : Z:\voasrv\HPCHEM1\MSVOA_D\Data\VD052924\
 Data File : VD079061.D
 Acq On : 29 May 2024 13:27
 Operator : RP/MD
 Sample : VD0529SBL01
 Misc : 5.00G/10ml /MSVOA_D/SOIL
 ALS Vial : 12 Sample Multiplier: 1

Instrument :
 MSVOA_D
 ClientSampleId :

Quant Time: May 30 01:11:26 2024
 Quant Method : Z:\voasrv\HPCHEM1\MSVOA_D\Method\SFAMDL052924SMA.M
 Quant Title : SFAM01.0
 QLast Update : Thu May 30 01:09:48 2024
 Response via : Initial Calibration

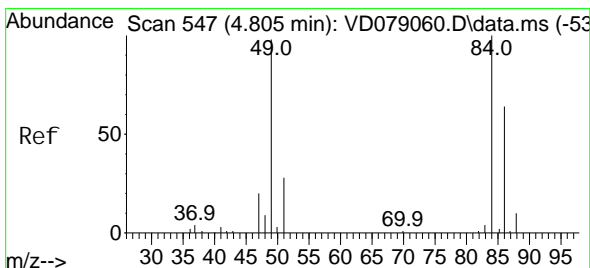
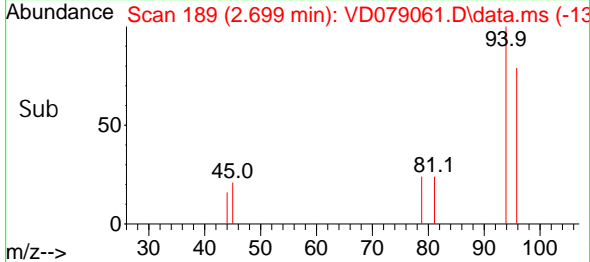
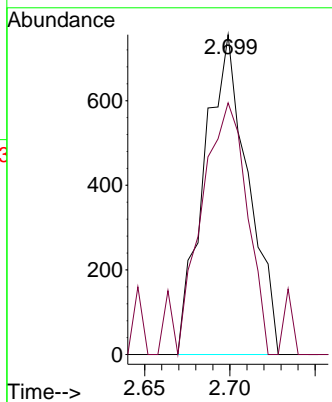
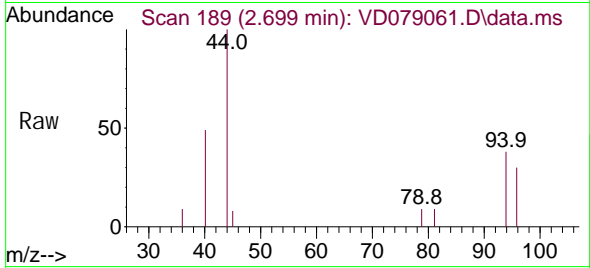




#6
 Bromomethane
 Concen: 0.273 ug/L
 RT: 2.699 min Scan# 188
 Delta R.T. 0.006 min
 Lab File: VD079061.D
 Acq: 29 May 2024 13:27

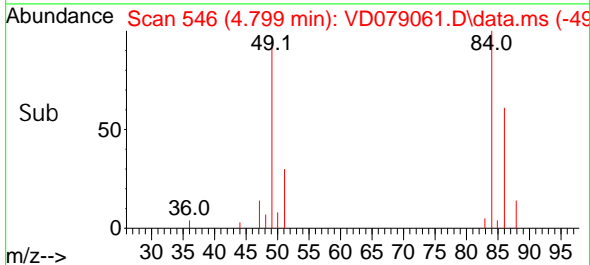
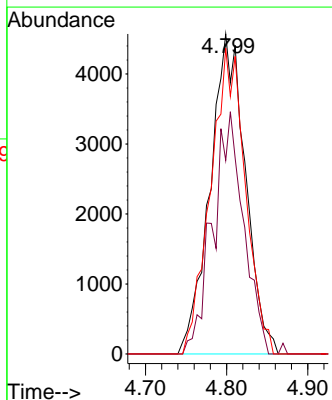
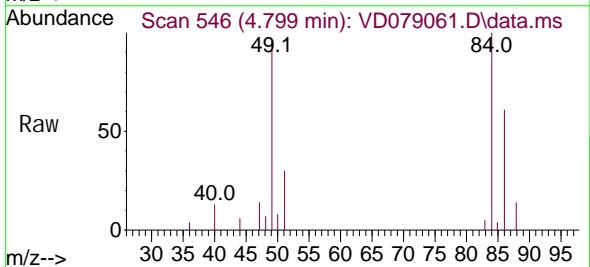
Instrument :
 MSVOA_D
 ClientSampleId :

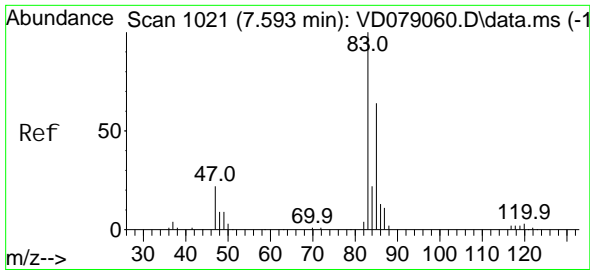
Tgt Ion: 94 Resp: 1354
 Ion Ratio Lower Upper
 94 100
 96 78.7 63.6 118.2



#16
 Methylene chloride
 Concen: 4.199 ug/L
 RT: 4.799 min Scan# 546
 Delta R.T. -0.006 min
 Lab File: VD079061.D
 Acq: 29 May 2024 13:27

Tgt Ion: 84 Resp: 13827
 Ion Ratio Lower Upper
 84 100
 86 60.5 40.9 76.0
 49 95.5 67.5 125.3

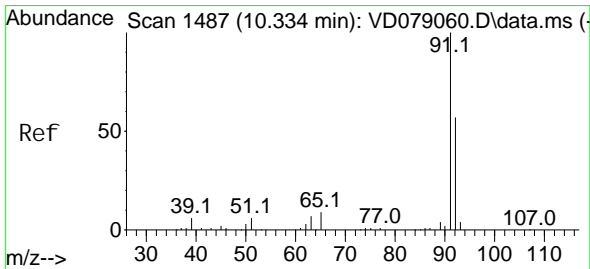
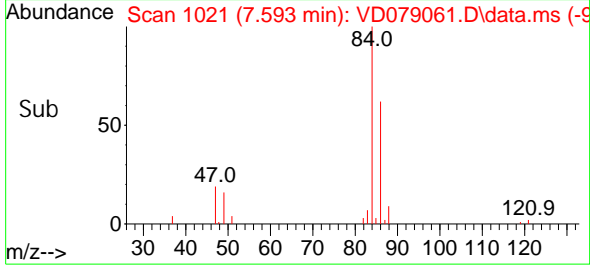
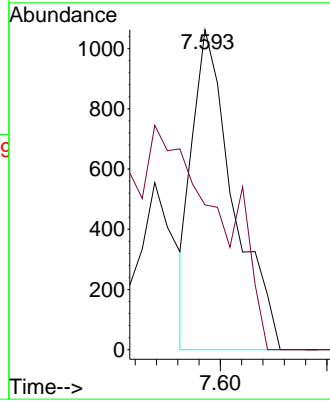
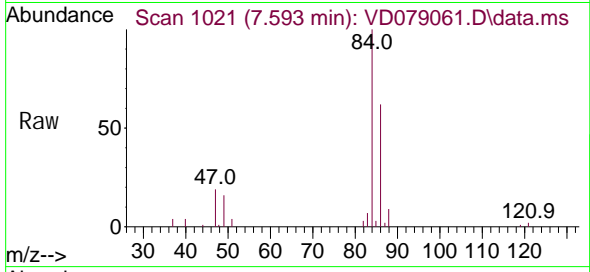




#25
 Chloroform
 Concen: 0.280 ug/L
 RT: 7.593 min Scan# 1021
 Delta R.T. -0.000 min
 Lab File: VD079061.D
 Acq: 29 May 2024 13:27

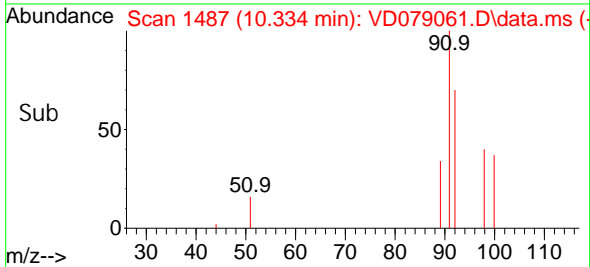
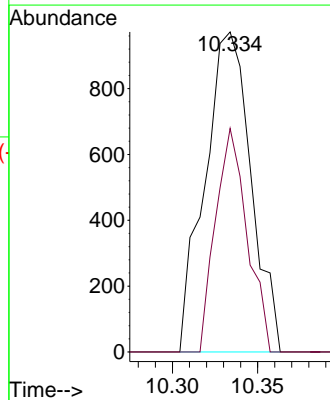
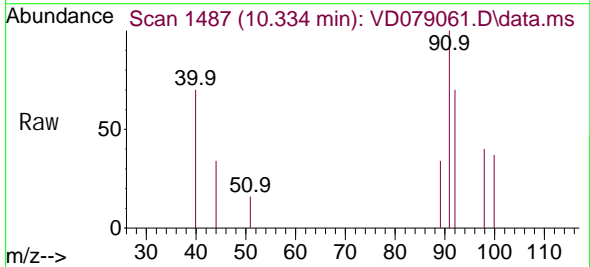
Instrument : MSVOA_D
 ClientSampleId :

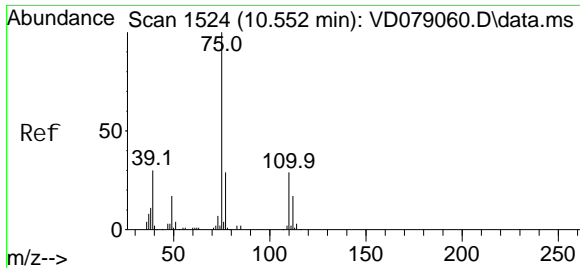
Tgt Ion: 83 Resp: 1415
 Ion Ratio Lower Upper
 83 100
 85 45.2 47.9 89.1#



#42
 Toluene
 Concen: 0.147 ug/L
 RT: 10.334 min Scan# 1487
 Delta R.T. -0.000 min
 Lab File: VD079061.D
 Acq: 29 May 2024 13:27

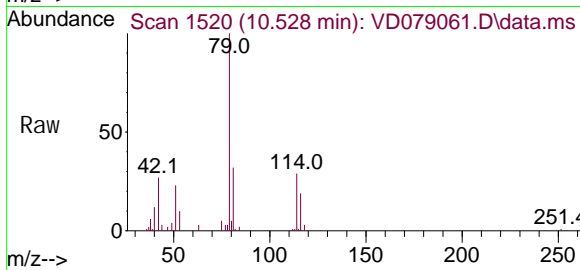
Tgt Ion: 91 Resp: 1833
 Ion Ratio Lower Upper
 91 100
 92 69.9 38.9 72.3



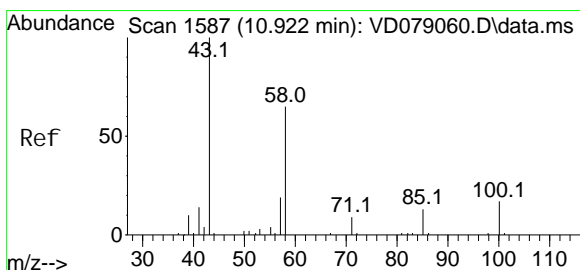
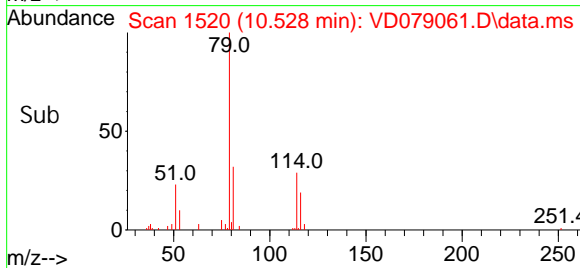
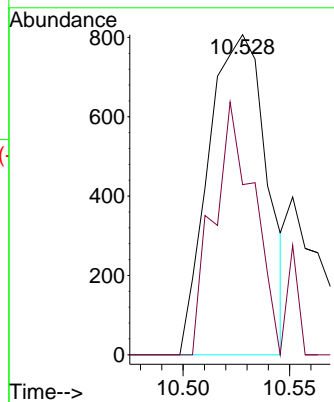


#44
 trans-1, 3-Di chl oropropene
 Concen: 0.424 ug/L
 RT: 10.528 min Scan# 1524
 Del ta R. T. -0.024 min
 Lab File: VD079061.D
 Acq: 29 May 2024 13:27

Instrument :
 MSVOA_D
 ClientSampleId :

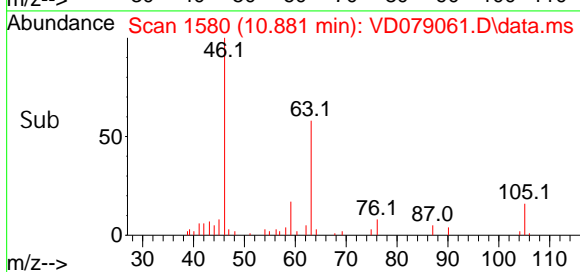
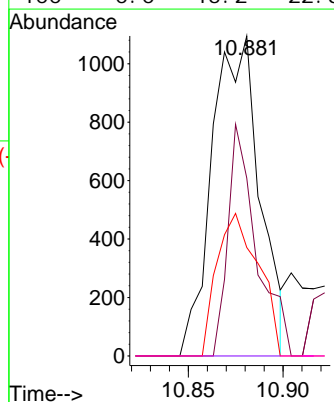
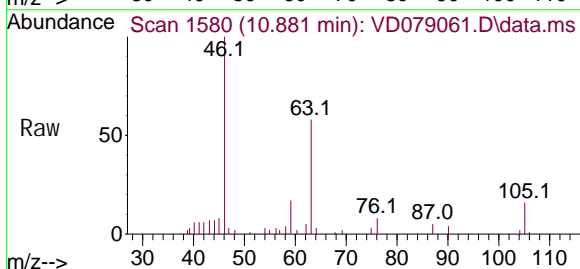


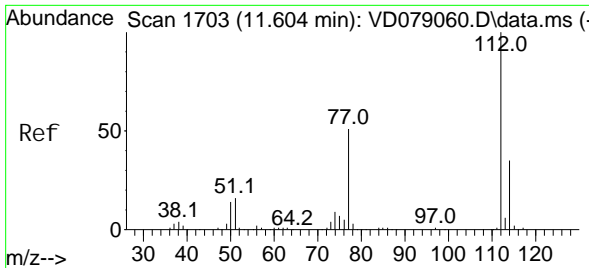
Tgt Ion: 75 Resp: 1537
 Ion Ratio Lower Upper
 75 100
 77 53.2 24.3 45.1#



#48
 2-Hexanone
 Concen: 1.938 ug/L
 RT: 10.881 min Scan# 1580
 Del ta R. T. -0.041 min
 Lab File: VD079061.D
 Acq: 29 May 2024 13:27

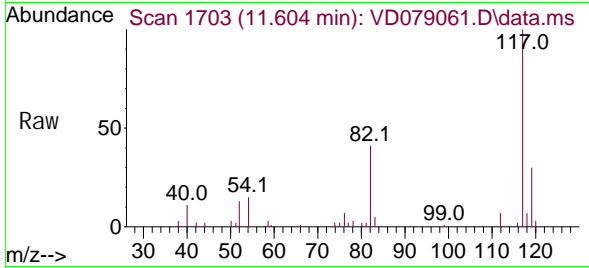
Tgt Ion: 43 Resp: 1920
 Ion Ratio Lower Upper
 43 100
 58 39.6 50.1 75.1#
 57 38.9 16.5 24.7#
 100 0.0 15.2 22.8#



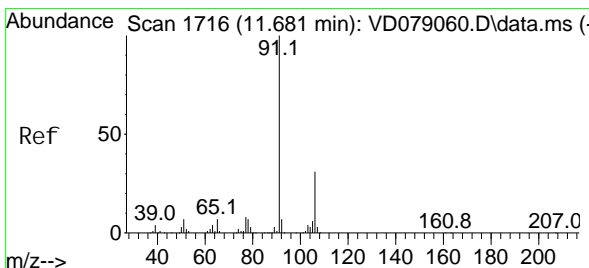
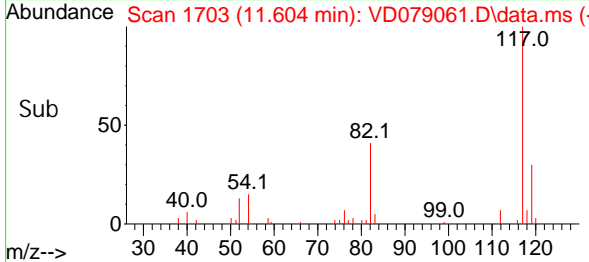
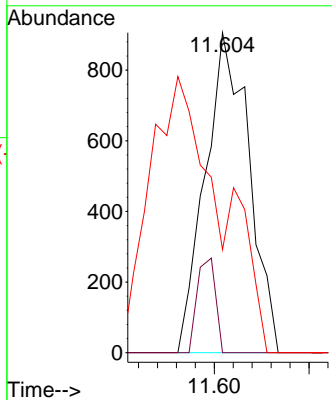


#51
 Chlorobenzene
 Concen: 0.176 ug/L
 RT: 11.604 min Scan# 1173
 Delta R.T. -0.000 min
 Lab File: VD079061.D
 Acq: 29 May 2024 13:27

Instrument : MSVOA_D
 ClientSampleId :

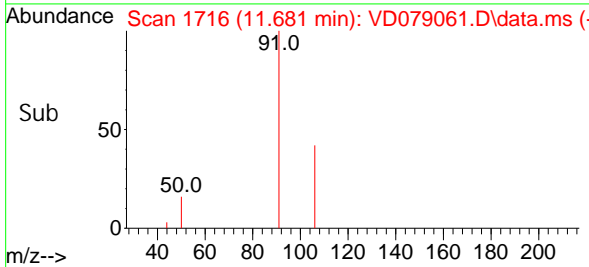
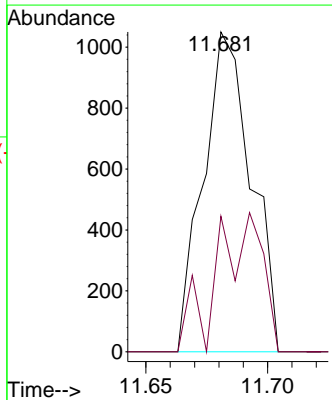
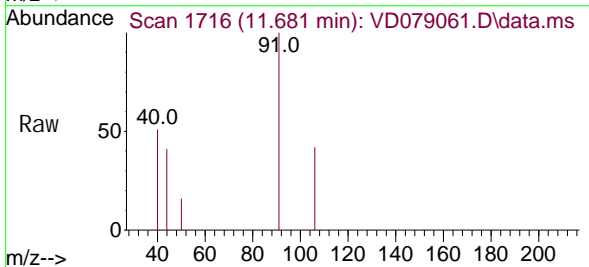


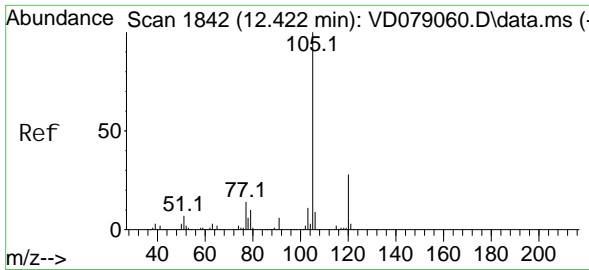
Tgt Ion: 112 Resp: 1456
 Ion Ratio Lower Upper
 112 100
 114 0.0 22.7 42.3#
 77 32.2 38.4 57.6#



#52
 Ethyl benzene
 Concen: 0.111 ug/L
 RT: 11.681 min Scan# 1716
 Delta R.T. -0.000 min
 Lab File: VD079061.D
 Acq: 29 May 2024 13:27

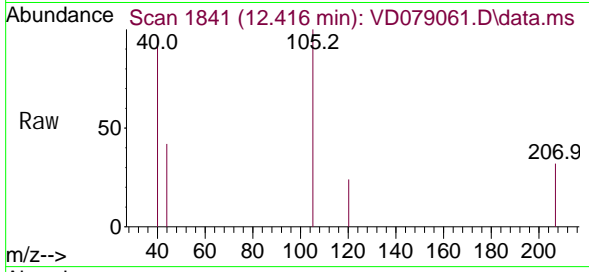
Tgt Ion: 91 Resp: 1437
 Ion Ratio Lower Upper
 91 100
 106 42.4 22.3 41.5#





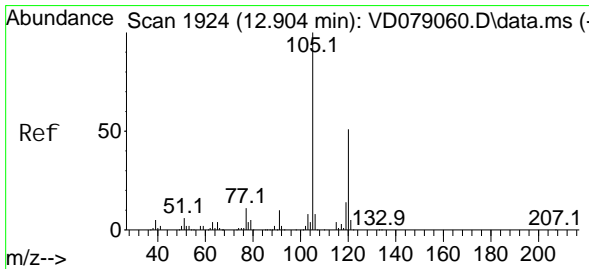
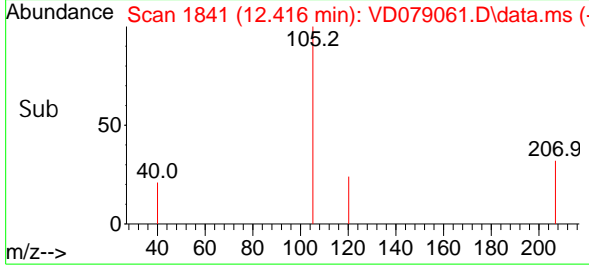
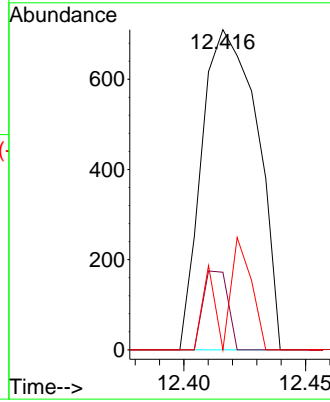
#60
 Isopropyl benzene
 Concen: 0.114 ug/L
 RT: 12.416 min Scan# 1841
 Delta R.T. -0.006 min
 Lab File: VD079061.D
 Acq: 29 May 2024 13:27

Instrument : MSVOA_D
 ClientSampleId :

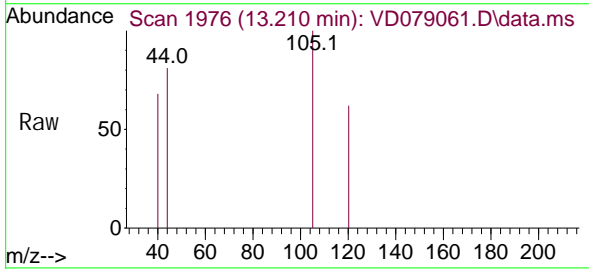


Tgt Ion: 105 Resp: 1124

Ion	Ratio	Lower	Upper
105	100		
120	0.0	21.9	32.9#
77	12.6	10.9	16.3

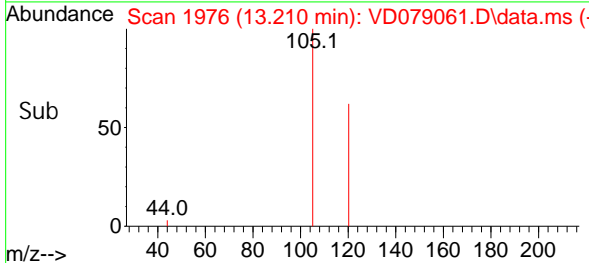
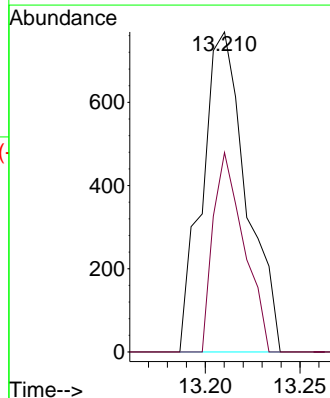


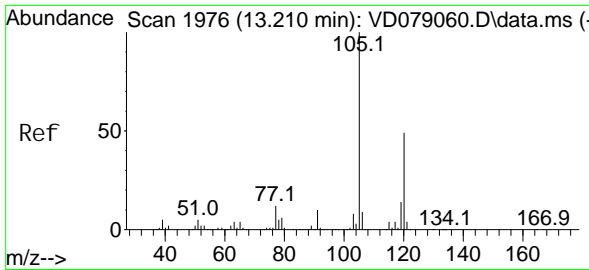
#62
 1,3,5-Tri methyl benzene
 Concen: 0.186 ug/L
 RT: 13.210 min Scan# 1976
 Delta R.T. 0.306 min
 Lab File: VD079061.D
 Acq: 29 May 2024 13:27



Tgt Ion: 105 Resp: 1250

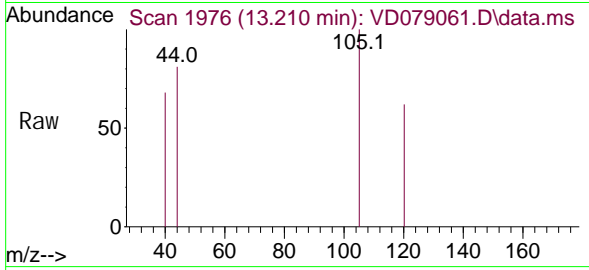
Ion	Ratio	Lower	Upper
105	100		
120	43.4	40.7	61.1



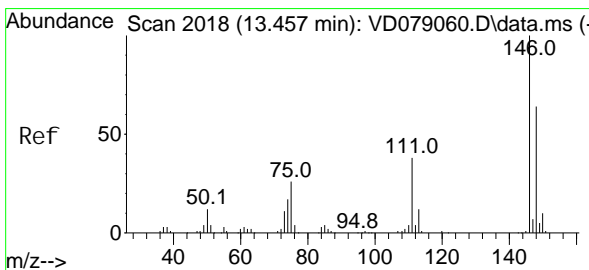
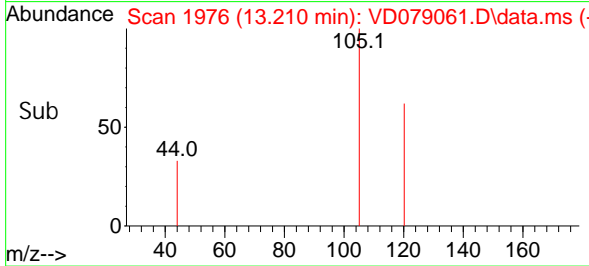
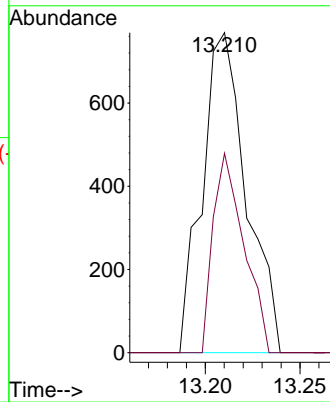


#63
 1, 2, 4-Tri methyl benzene
 Concen: 0.174 ug/L
 RT: 13.210 min Scan# 1976
 Delta R.T. -0.000 min
 Lab File: VD079061.D
 Acq: 29 May 2024 13:27

Instrument : MSVOA_D
 ClientSampleId :

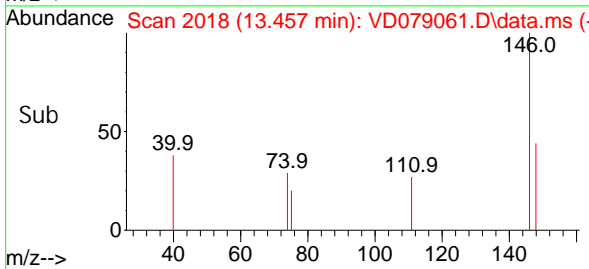
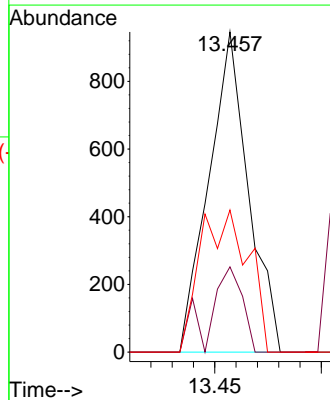
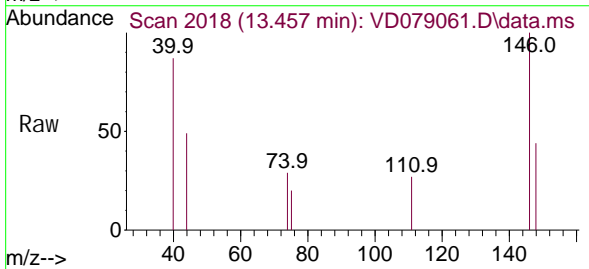


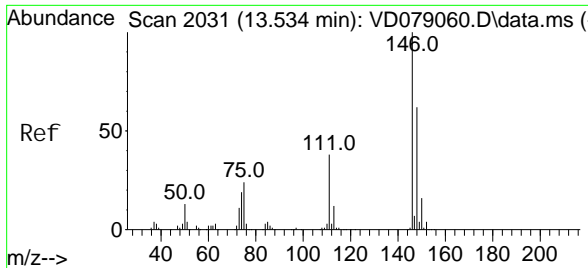
Tgt Ion: 105 Resp: 1250
 Ion Ratio Lower Upper
 105 100
 120 43.4 38.0 57.0



#64
 1, 3-Di chl orobenzene
 Concen: 0.259 ug/L
 RT: 13.457 min Scan# 2018
 Delta R.T. -0.000 min
 Lab File: VD079061.D
 Acq: 29 May 2024 13:27

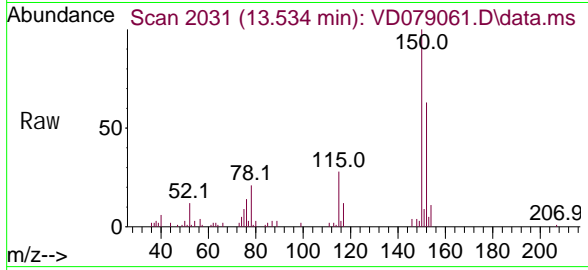
Tgt Ion: 146 Resp: 1223
 Ion Ratio Lower Upper
 146 100
 111 26.6 24.4 45.4
 148 44.4 44.9 83.3#





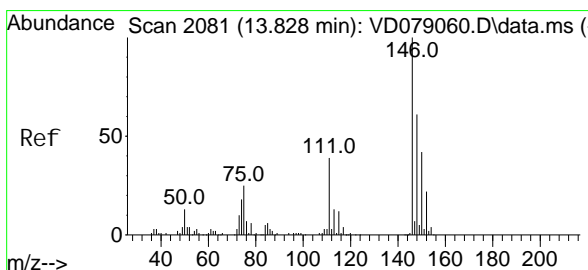
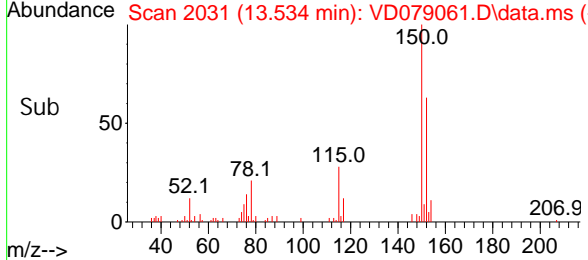
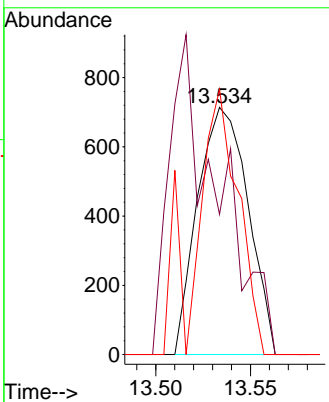
#65
 1, 4-Di chl orobenzene
 Concen: 0.265 ug/L
 RT: 13.534 min Scan# 2031
 Delta R.T. -0.000 min
 Lab File: VD079061.D
 Acq: 29 May 2024 13:27

Instrument : MSVOA_D
 ClientSampleId :



Tgt Ion: 146 Resp: 1323

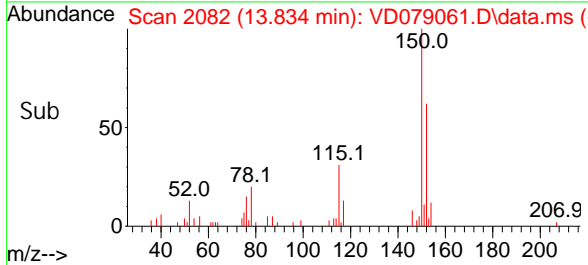
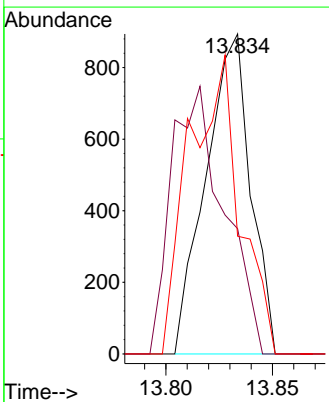
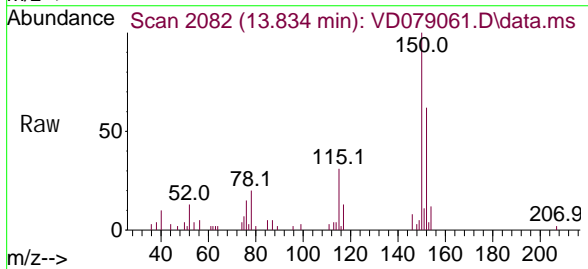
Ion	Ratio	Lower	Upper
146	100		
111	56.7	26.3	48.9#
148	107.4	43.1	80.1#

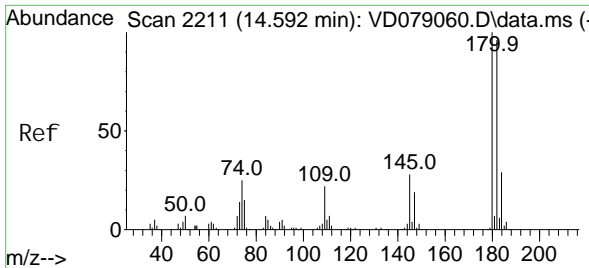


#67
 1, 2-Di chl orobenzene
 Concen: 0.299 ug/L
 RT: 13.834 min Scan# 2082
 Delta R.T. 0.006 min
 Lab File: VD079061.D
 Acq: 29 May 2024 13:27

Tgt Ion: 146 Resp: 1305

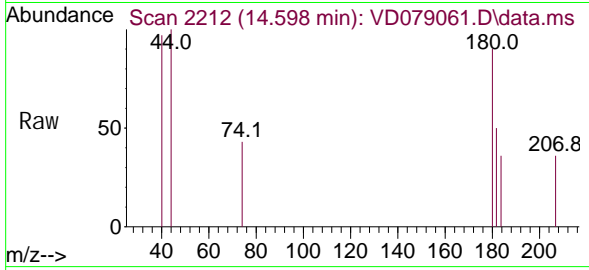
Ion	Ratio	Lower	Upper
146	100		
111	39.1	29.1	43.7
148	36.8	51.2	76.8#



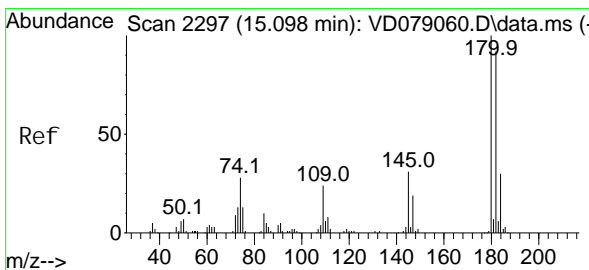
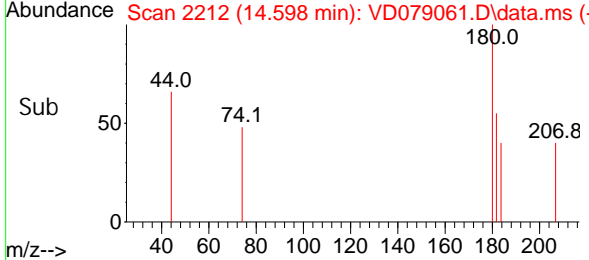
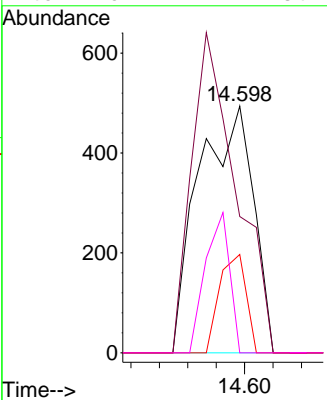


#69
 1, 3, 5-Tri chlorobenzene
 Concen: 0.222 ug/L
 RT: 14.598 min Scan# 21
 Delta R.T. 0.006 min
 Lab File: VD079061.D
 Acq: 29 May 2024 13:27

Instrument :
 MSVOA_D
 ClientSampleId :



Tgt Ion: 180 Resp: 660
 Ion Ratio Lower Upper
 180 100
 182 106.1 76.9 115.3
 184 19.4 23.3 34.9#
 145 25.2 22.7 34.1



#70
 1, 2, 4-tri chlorobenzene
 Concen: 0.312 ug/L
 RT: 15.104 min Scan# 2298
 Delta R.T. 0.006 min
 Lab File: VD079061.D
 Acq: 29 May 2024 13:27

Tgt Ion: 180 Resp: 772
 Ion Ratio Lower Upper
 180 100
 182 40.0 73.8 110.6#
 145 0.0 22.3 33.5#

