

Data Path : Z:\VOASRV\HPCHEM1\MSVOA D\DATA\VD053019\
 Data File : VD062553.D
 Acq On : 30 May 2019 15:00
 Operator : VA/AP
 Sample : VIBLK
 Misc : 5.00µ/5ml/MSVOA D/SOIL
 ALS Vial : 9 Sample Multiplier: 1

Quant Time: May 31 02:13:38 2019
 Quant Method : Z:\VOASRV\HPCHEM1\MSVOA_D\METHOD\82D053019S.M
 Quant Title : SW846 8260
 QLast Update : Fri May 31 02:08:29 2019
 Response via : Initial Calibration

Internal Standards	R.T.	QIon	Response	Conc	Units	Dev(Min)
1) Pentafluorobenzene	7.06	168	891366	50.00	µg/l	0.00
34) 1,4-Difluorobenzene	8.23	114	1201327	50.00	µg/l	0.00
63) Chlorobenzene-d5	12.37	117	996877	50.00	µg/l	0.00
72) 1,4-Dichlorobenzene-d4	14.53	152	520438	50.00	µg/l	0.00

System Monitoring Compounds

33) 1,2-Dichloroethane-d4	7.46	65	497531	47.60	µg/l	0.00
Spiked Amount	50.000		Recovery	=	95.20%	
35) Dibromofluoromethane	6.94	113	539713	49.30	µg/l	0.00
Spiked Amount	50.000		Recovery	=	98.60%	
50) Toluene-d8	10.42	98	1127172	46.99	µg/l	0.00
Spiked Amount	50.000		Recovery	=	93.98%	
62) 4-Bromofluorobenzene	13.56	95	531710	49.16	µg/l	0.00
Spiked Amount	50.000		Recovery	=	98.32%	

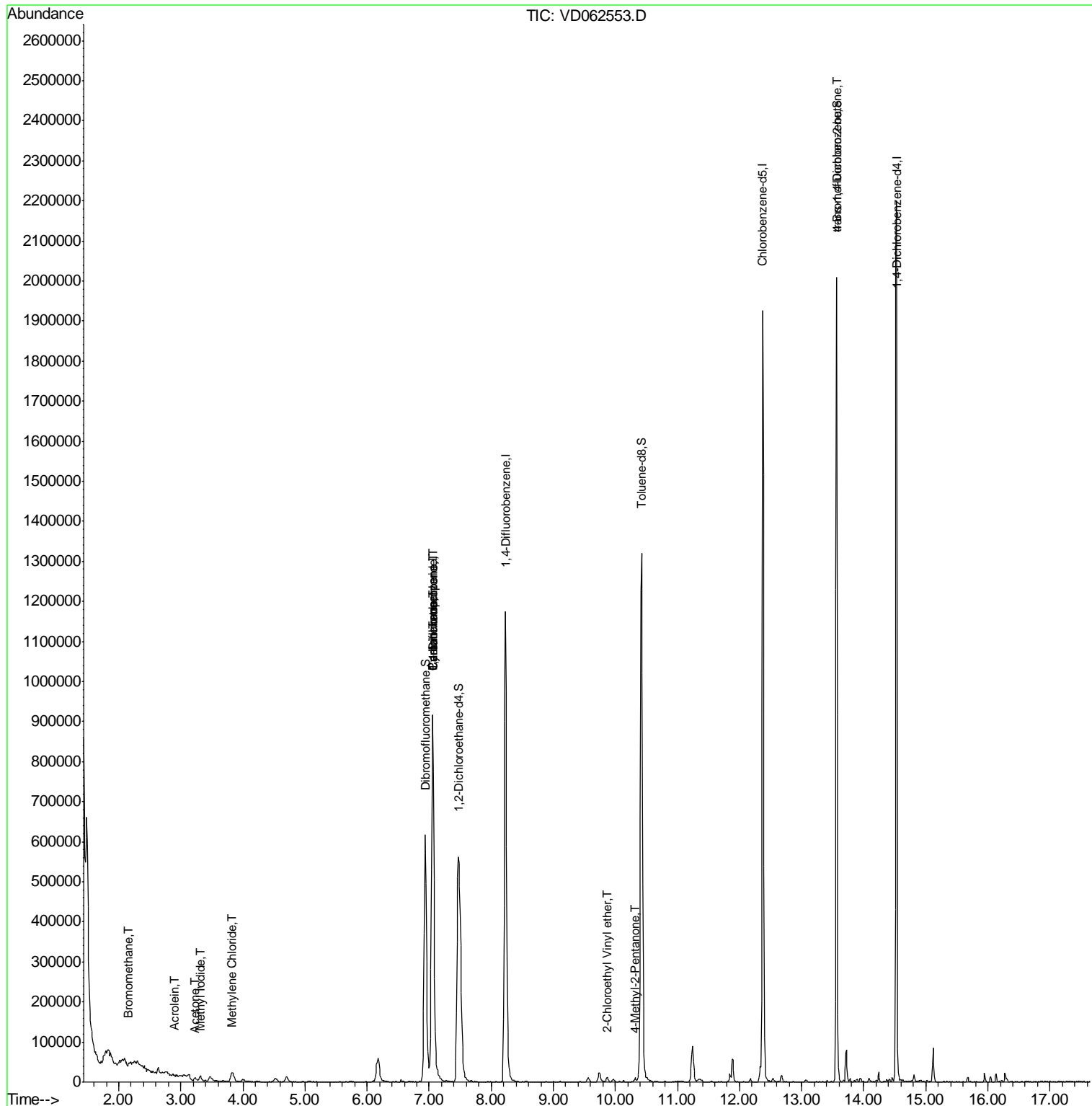
Target Compounds

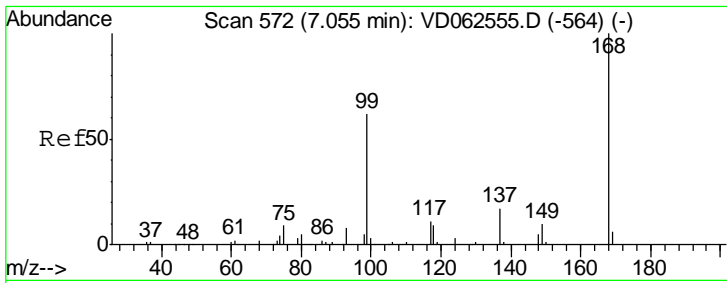
					Qvalue
3) Chloromethane	1.75	50	7611	Below Cal	94
5) Bromomethane	2.16	94	6346	2.475 µg/l #	89
10) Methyl Iodide	3.32	142	18631	1.666 µg/l #	84
13) Acrolein	2.89	56	256	1.318 µg/l	100
16) Acetone	3.23	43	18820	9.165 µg/l #	78
20) Methylene Chloride	3.83	84	12823	1.687 µg/l	95
31) Cyclohexane	7.06	56	22140	2.281 µg/l #	6
36) 1,1-Dichloropropene	7.06	75	71976	6.019 µg/l #	50
38) Carbon Tetrachloride	7.06	117	92610	5.201 µg/l #	18
51) 4-Methyl-2-Pentanone	10.31	43	8011	1.830 µg/l #	82
58) 2-Chloroethyl Vinyl ether	9.87	63	6512	2.266 µg/l	92
81) trans-1,4-Dichloro-2-buten	13.56	75	259649	145.129 µg/l #	5

(#) = qualifier out of range (m) = manual integration (+) = signals summed

Data Path : Z:\VOASRV\HPCHEM1\MSVOA D\DATA\VD053019\
 Data File : VD062553.D
 Acq On : 30 May 2019 15:00
 Operator : VA/AP
 Sample : VIBLK
 Misc : 5.00µl/5ml/MSVOA D/SOIL
 ALS Vial : 9 Sample Multiplier: 1

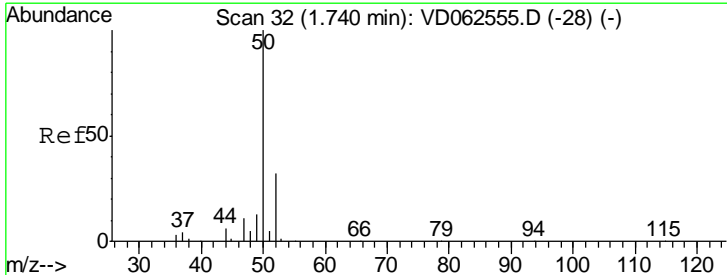
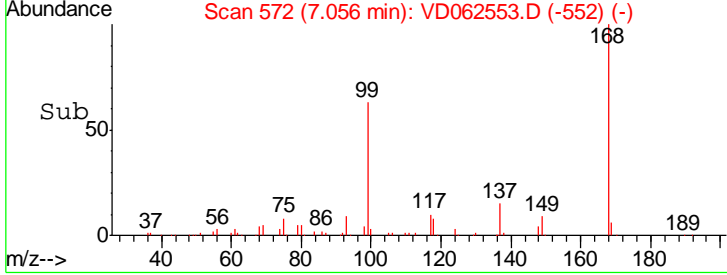
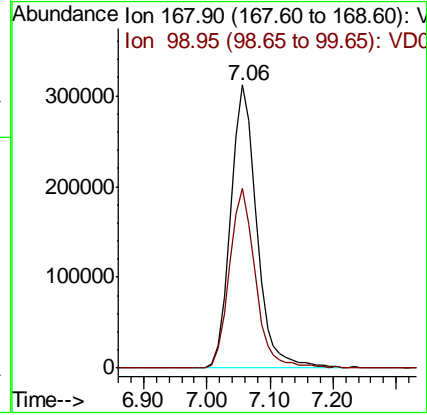
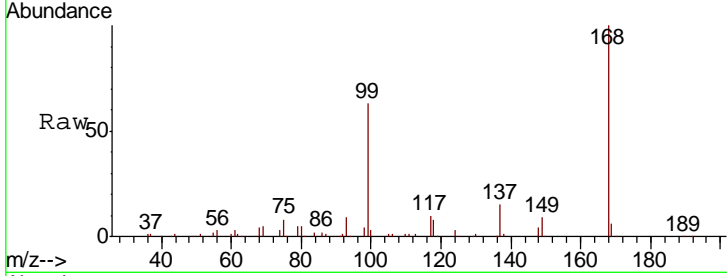
Quant Time: May 31 02:13:38 2019
 Quant Method : Z:\VOASRV\HPCHEM1\MSVOA_D\METHOD\82D053019S.M
 Quant Title : SW846 8260
 QLast Update : Fri May 31 02:08:29 2019
 Response via : Initial Calibration





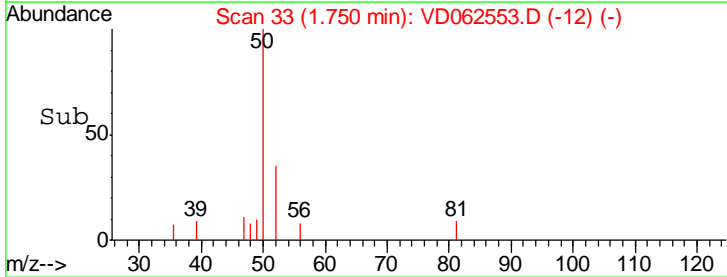
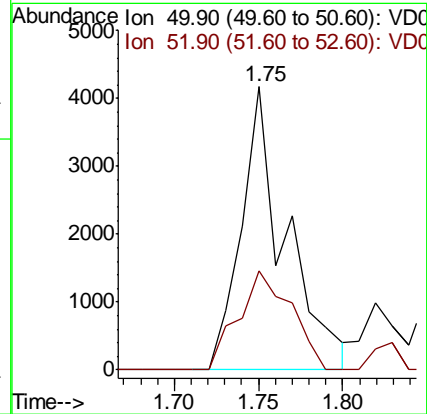
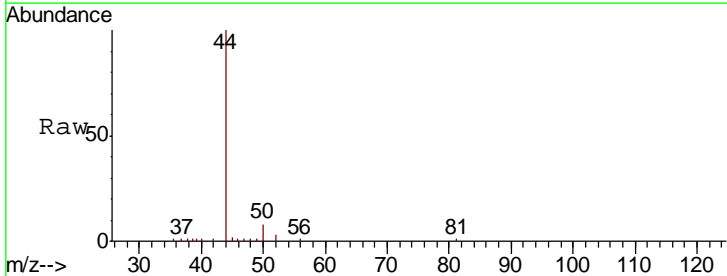
#1
 Pentafluorobenzene
 Concen: 50.000 ug/l
 RT: 7.06 min Scan# 572
 Delta R.T. 0.00 min
 Lab File: VD062553.D
 Acq: 30 May 2019 15:00

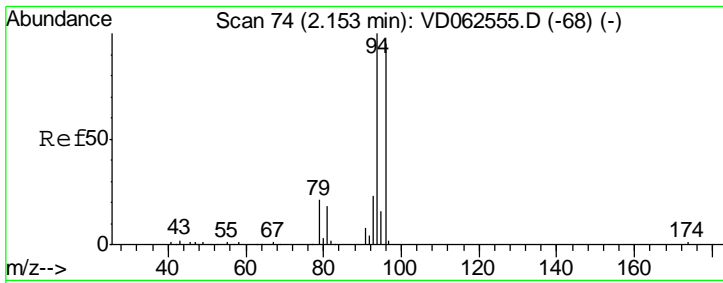
Tgt Ion	Resp	Lower	Upper
168	100		
99	63.4	50.8	76.2



#3
 Chloromethane
 Concen: Below Cal
 RT: 1.75 min Scan# 33
 Delta R.T. 0.01 min
 Lab File: VD062553.D
 Acq: 30 May 2019 15:00

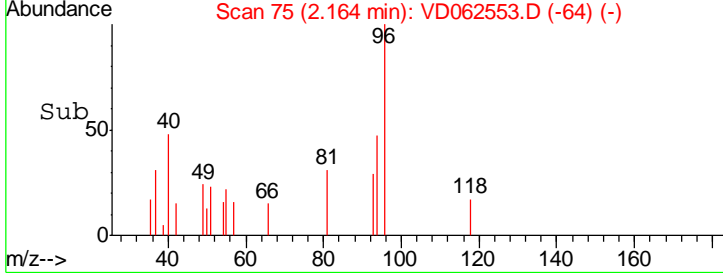
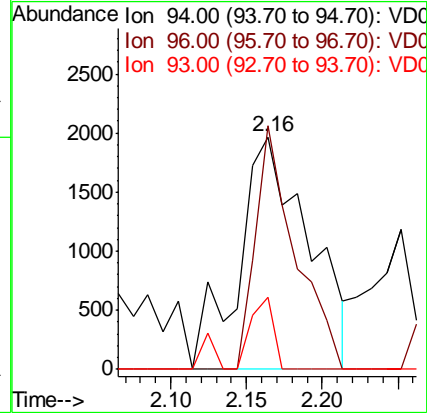
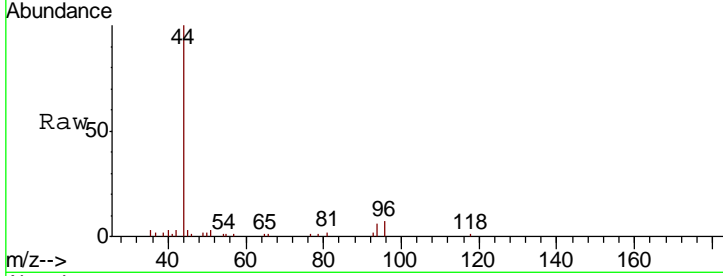
Tgt Ion	Resp	Lower	Upper
50	100		
52	35.0	25.4	38.2





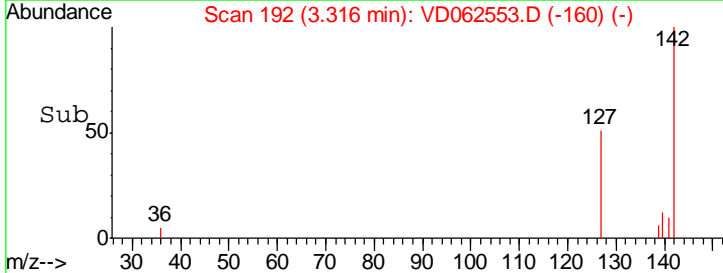
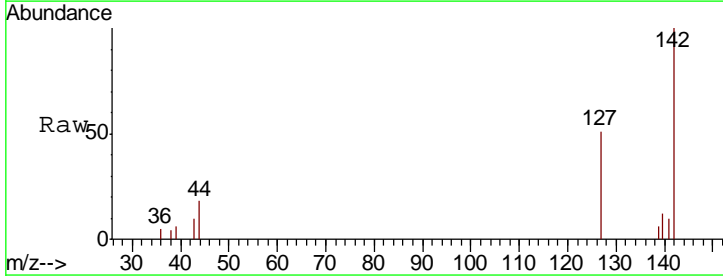
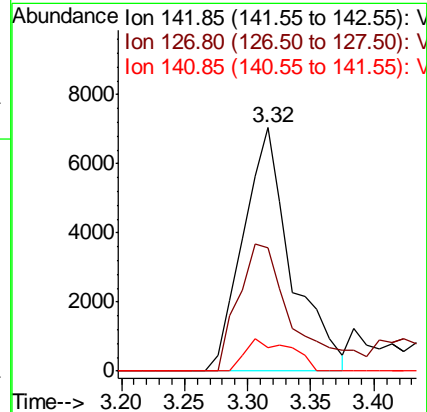
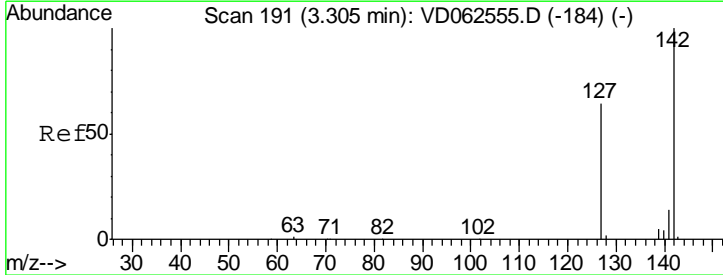
#5
 Bromomethane
 Concen: 2.475 ug/l
 RT: 2.16 min Scan# 75
 Delta R.T. 0.01 min
 Lab File: VD062553.D
 Acq: 30 May 2019 15:00

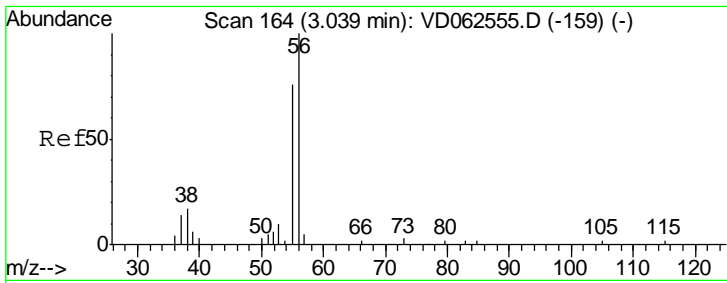
Tgt Ion	Resp	Lower	Upper
94	6346		
96	104.7	76.2	114.4
93	30.8	18.4	27.6#



#10
 Methyl Iodide
 Concen: 1.666 ug/l
 RT: 3.32 min Scan# 192
 Delta R.T. 0.01 min
 Lab File: VD062553.D
 Acq: 30 May 2019 15:00

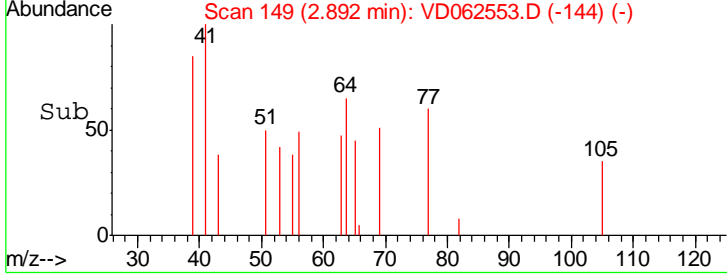
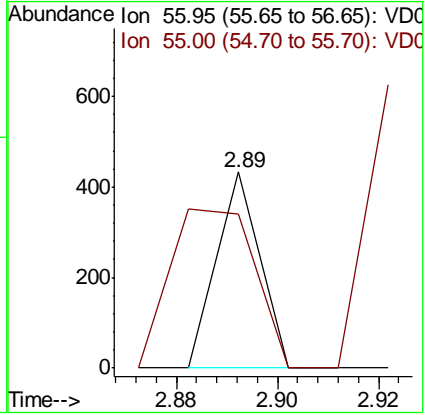
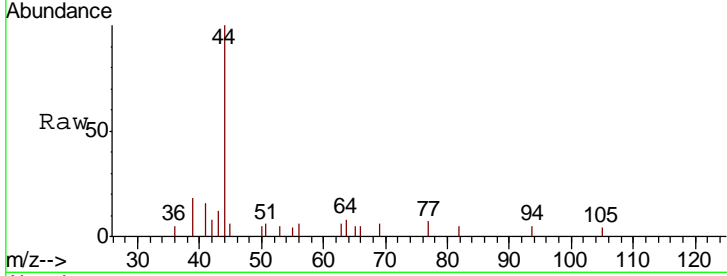
Tgt Ion	Resp	Lower	Upper
142	18631		
127	50.8	51.2	76.8#
141	9.8	11.0	16.4#





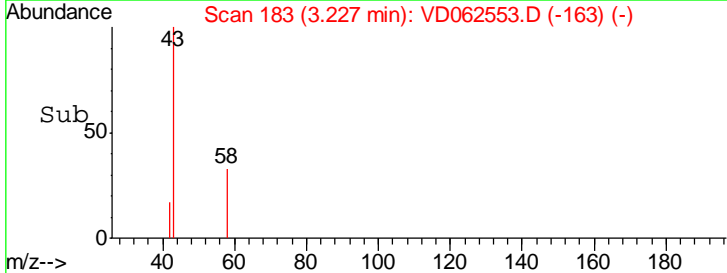
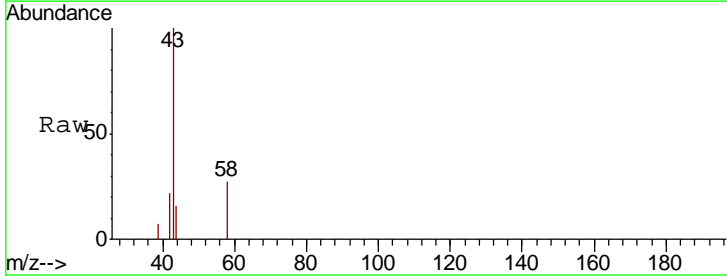
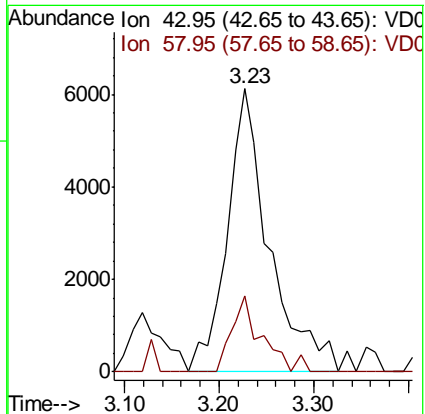
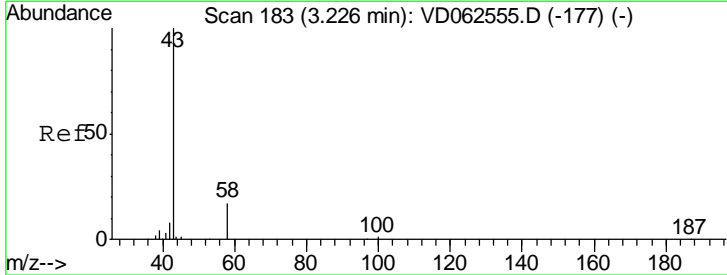
#13
 Acrolein
 Concen: 1.318 ug/l
 RT: 2.89 min Scan# 149
 Delta R.T. -0.15 min
 Lab File: VD062553.D
 Acq: 30 May 2019 15:00

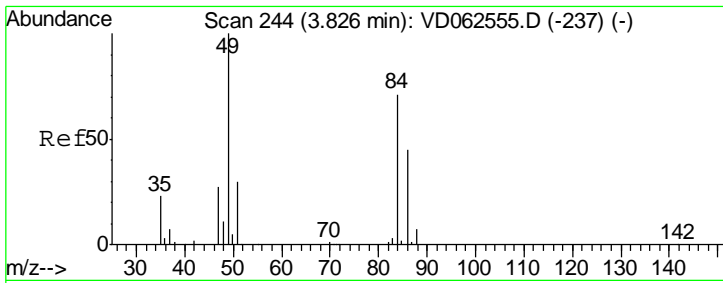
Tgt Ion	Resp	Lower	Upper
56	256		
55	78.3	62.6	93.8



#16
 Acetone
 Concen: 9.165 ug/l
 RT: 3.23 min Scan# 183
 Delta R.T. 0.00 min
 Lab File: VD062553.D
 Acq: 30 May 2019 15:00

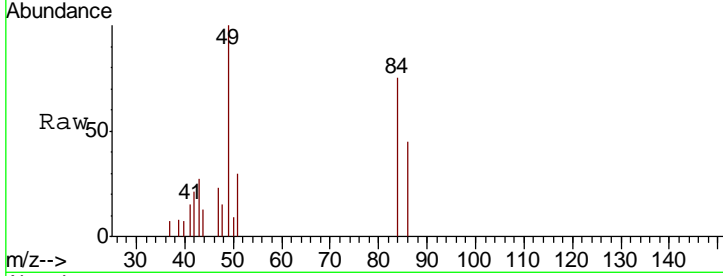
Tgt Ion	Resp	Lower	Upper
43	18820		
58	27.0	13.8	20.8#



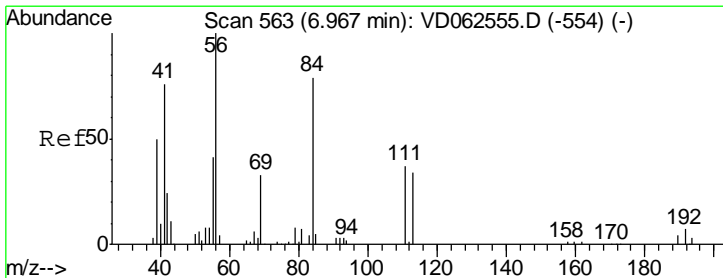
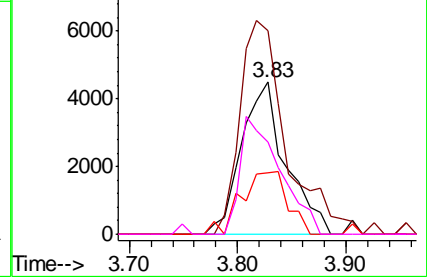
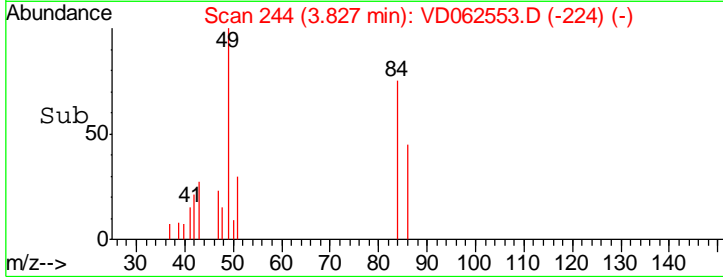


#20
 Methylene Chloride
 Concen: 1.687 ug/l
 RT: 3.83 min Scan# 244
 Delta R.T. 0.00 min
 Lab File: VD062553.D
 Acq: 30 May 2019 15:00

Tgt Ion	Resp	Lower	Upper
84	12823		
Ion Ratio			
84	100		
49	133.5	112.3	168.5
51	40.2	33.6	50.4
86	60.6	50.4	75.6

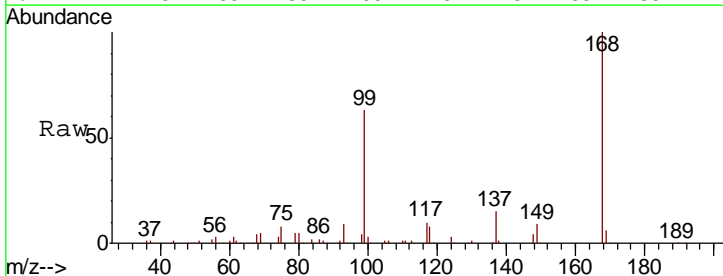


Abundance Ion 83.95 (83.65 to 84.65): VDC
 Ion 48.90 (48.60 to 49.60): VDC
 Ion 50.90 (50.60 to 51.60): VDC
 Ion 85.90 (85.60 to 86.60): VDC

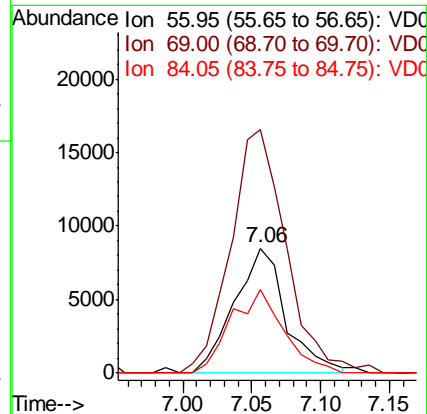
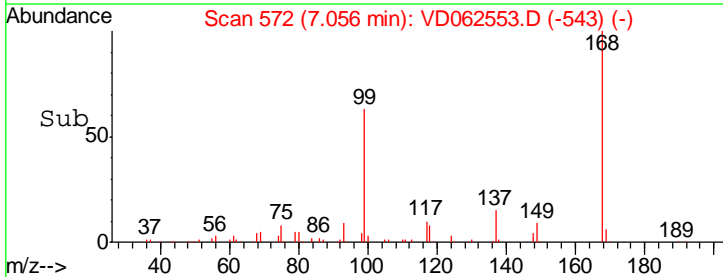


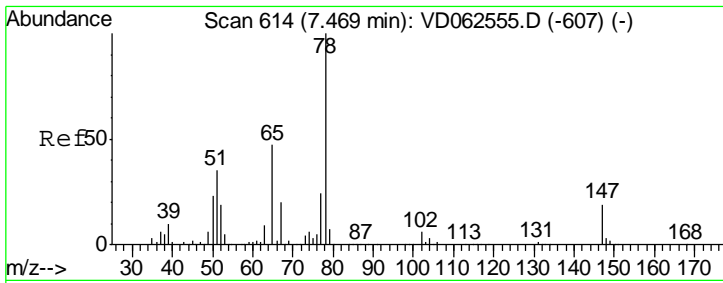
#31
 Cyclohexane
 Concen: 2.281 ug/l
 RT: 7.06 min Scan# 572
 Delta R.T. 0.09 min
 Lab File: VD062553.D
 Acq: 30 May 2019 15:00

Tgt Ion	Resp	Lower	Upper
56	22140		
Ion Ratio			
56	100		
69	194.6	26.2	39.2#
84	66.6	65.2	97.8



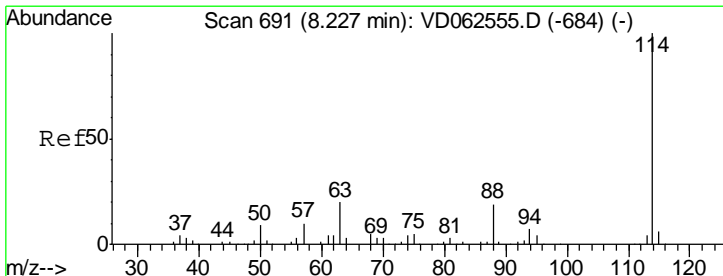
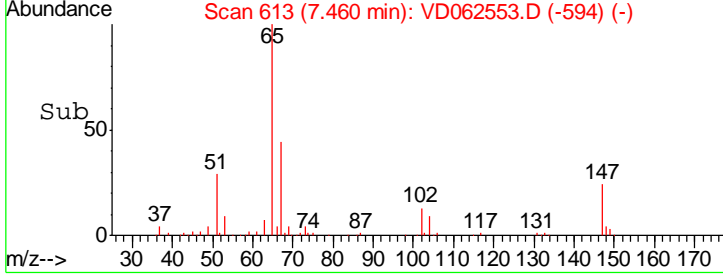
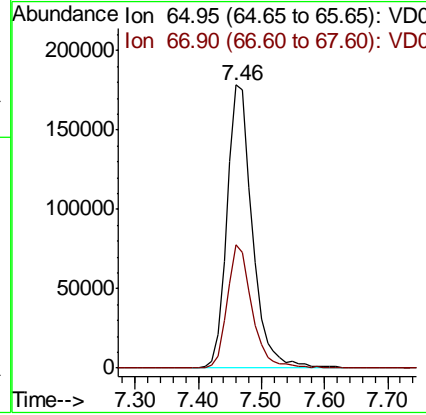
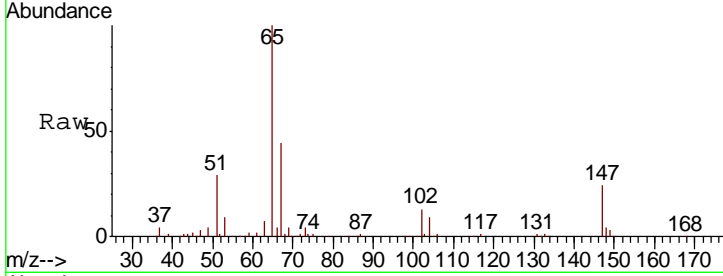
Abundance Ion 55.95 (55.65 to 56.65): VDC
 Ion 69.00 (68.70 to 69.70): VDC
 Ion 84.05 (83.75 to 84.75): VDC





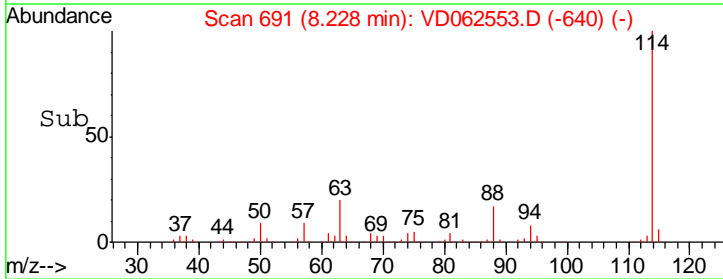
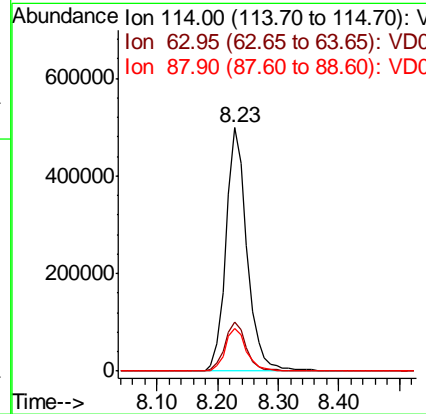
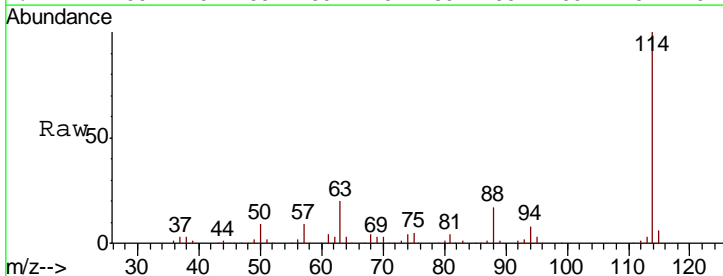
#33
 1,2-Dichloroethane-d4
 Concen: 47.604 ug/l
 RT: 7.46 min Scan# 613
 Delta R.T. -0.01 min
 Lab File: VD062553.D
 Acq: 30 May 2019 15:00

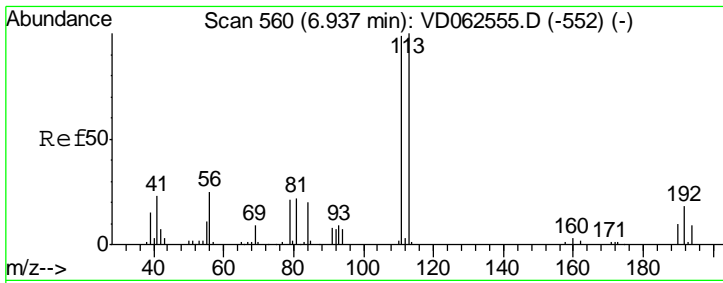
Tgt Ion	Resp	Lower	Upper
65	497531		
67	43.8	0.0	83.6



#34
 1,4-Difluorobenzene
 Concen: 50.000 ug/l
 RT: 8.23 min Scan# 691
 Delta R.T. 0.00 min
 Lab File: VD062553.D
 Acq: 30 May 2019 15:00

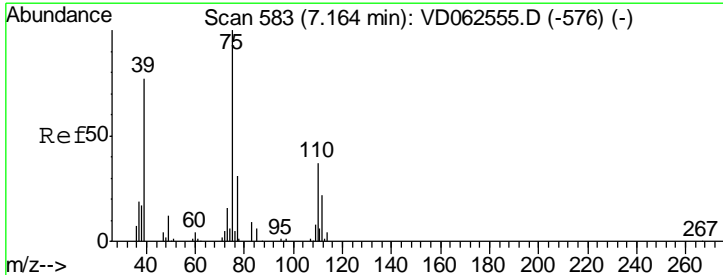
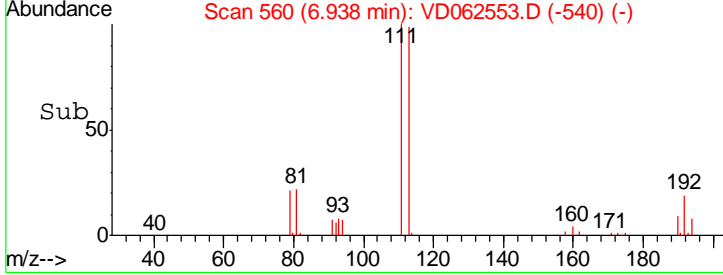
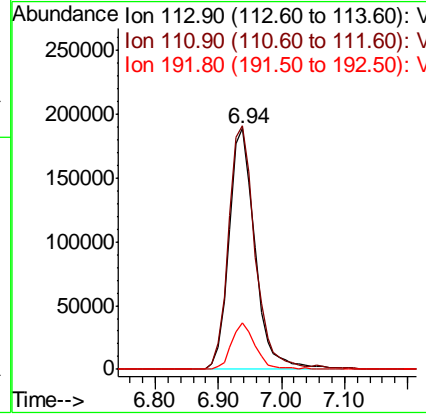
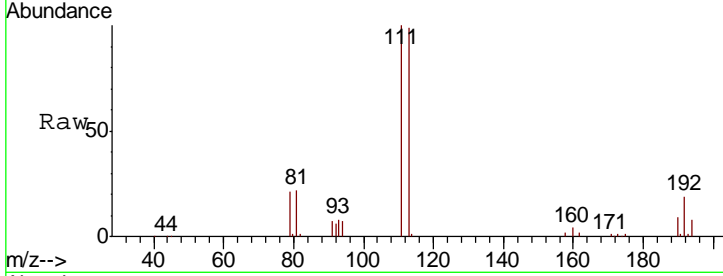
Tgt Ion	Resp	Lower	Upper
114	1201327		
63	20.4	0.0	40.6
88	17.4	0.0	37.6





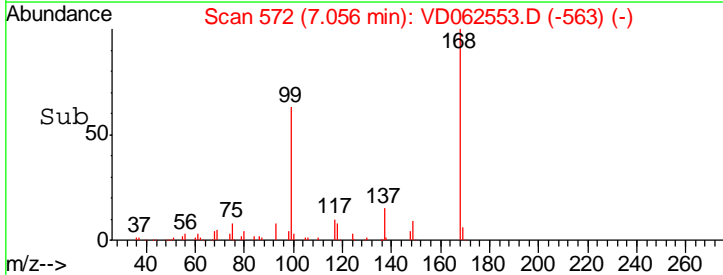
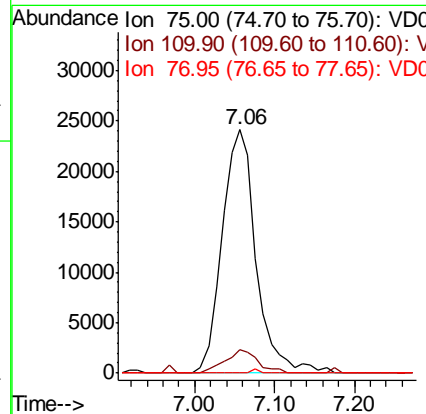
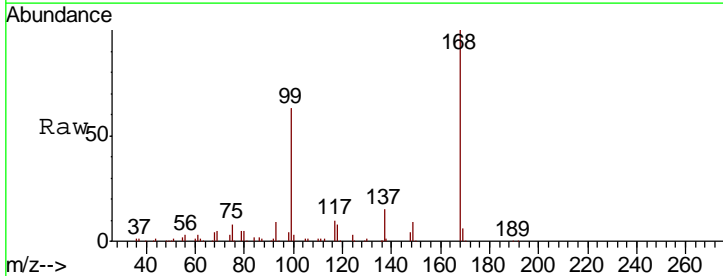
#35
 Dibromofluoromethane
 Concen: 49.301 ug/l
 RT: 6.94 min Scan# 560
 Delta R.T. 0.00 min
 Lab File: VD062553.D
 Acq: 30 May 2019 15:00

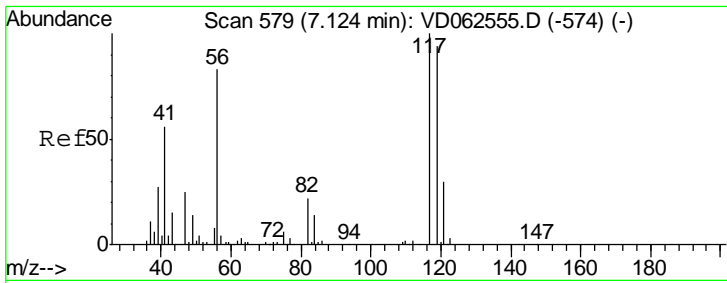
Tgt Ion	Resp	Lower	Upper
113	539713		
111	101.0	78.8	118.2
192	19.4	14.6	22.0



#36
 1,1-Dichloropropene
 Concen: 6.019 ug/l
 RT: 7.06 min Scan# 572
 Delta R.T. -0.11 min
 Lab File: VD062553.D
 Acq: 30 May 2019 15:00

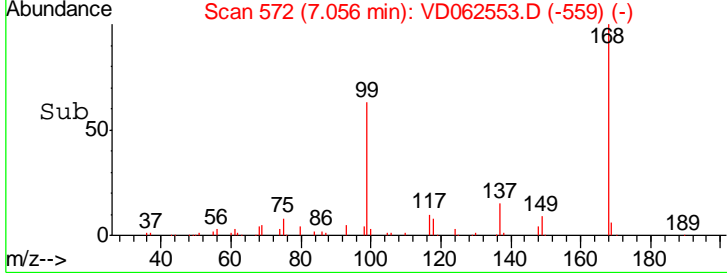
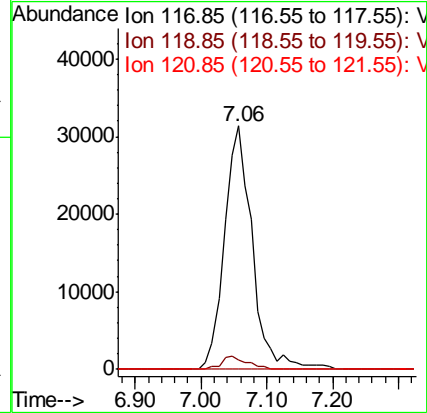
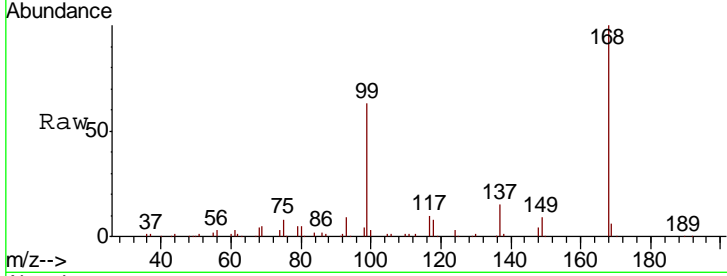
Tgt Ion	Resp	Lower	Upper
75	71976		
110	9.8	18.3	54.8#
77	0.0	24.4	36.6#





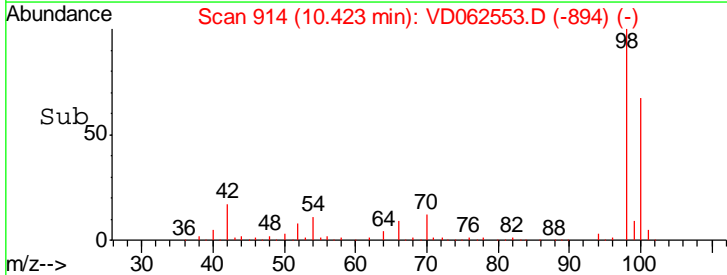
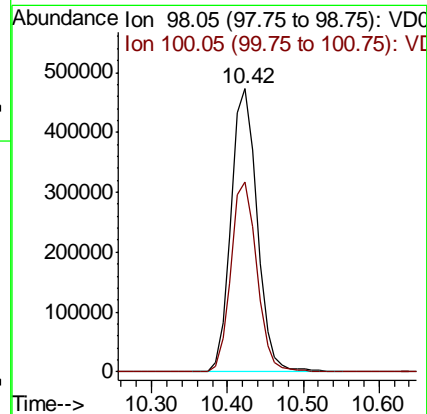
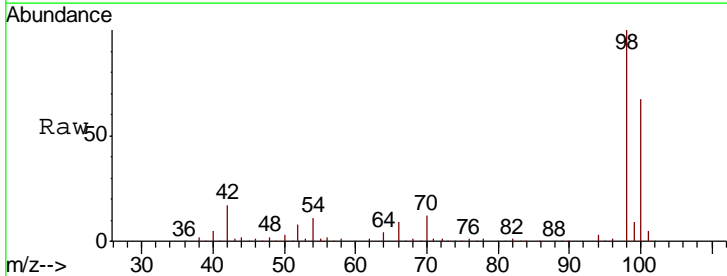
#38
 Carbon Tetrachloride
 Concen: 5.201 ug/l
 RT: 7.06 min Scan# 572
 Delta R.T. -0.07 min
 Lab File: VD062553.D
 Acq: 30 May 2019 15:00

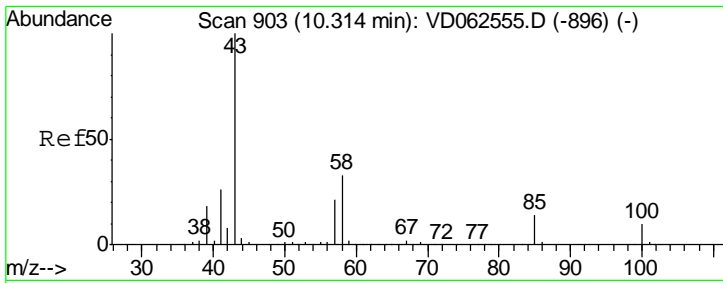
Tgt Ion	Resp	Lower	Upper
117	100		
119	3.7	71.4	107.2#
121	0.0	22.5	33.7#



#50
 Toluene-d8
 Concen: 46.994 ug/l
 RT: 10.42 min Scan# 914
 Delta R.T. 0.00 min
 Lab File: VD062553.D
 Acq: 30 May 2019 15:00

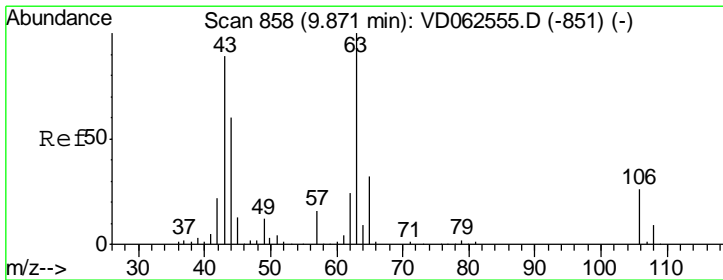
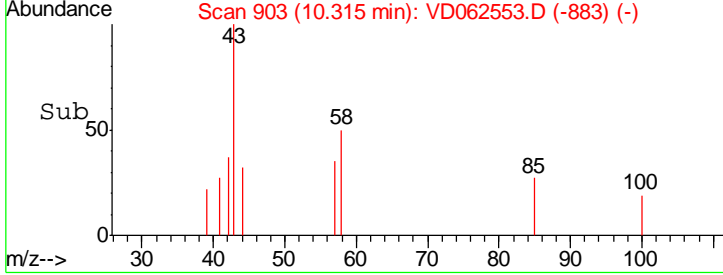
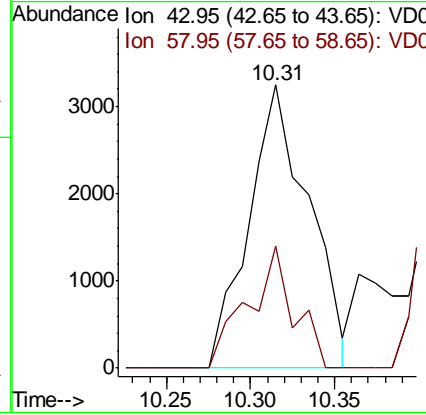
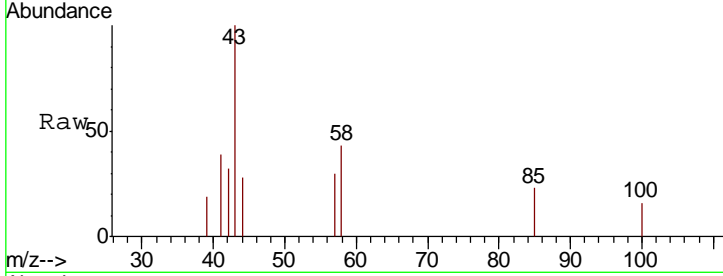
Tgt Ion	Resp	Lower	Upper
98	100		
100	67.1	52.3	78.5





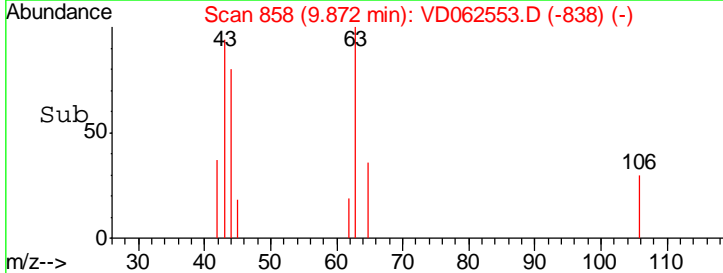
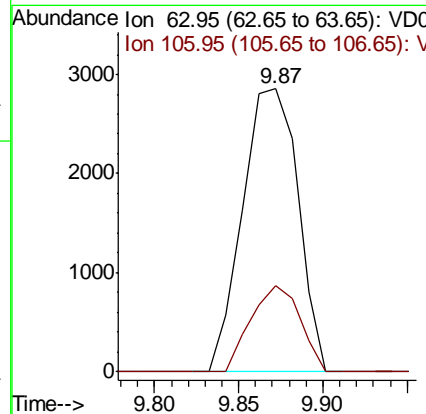
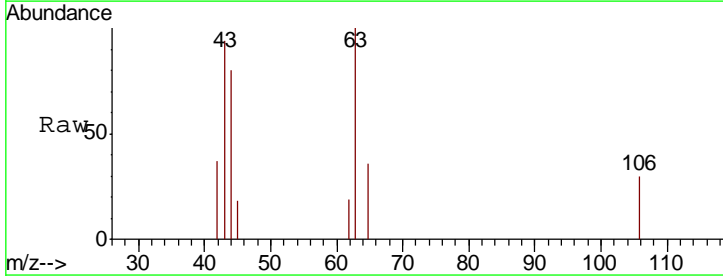
#51
 4-Methyl-2-Pentanone
 Concen: 1.830 ug/l
 RT: 10.31 min Scan# 903
 Delta R.T. 0.00 min
 Lab File: VD062553.D
 Acq: 30 May 2019 15:00

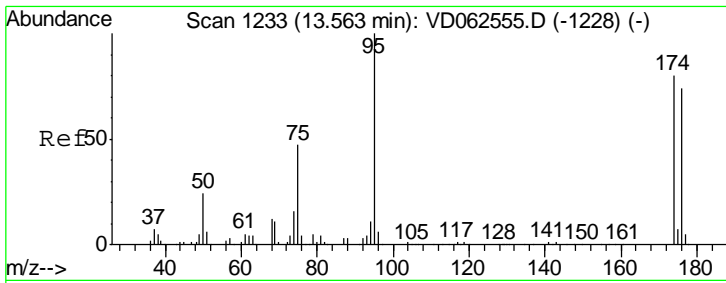
Tgt Ion	Resp	Lower	Upper
43	100		
58	42.9	26.1	39.1#



#58
 2-Chloroethyl Vinyl ether
 Concen: 2.266 ug/l
 RT: 9.87 min Scan# 858
 Delta R.T. 0.00 min
 Lab File: VD062553.D
 Acq: 30 May 2019 15:00

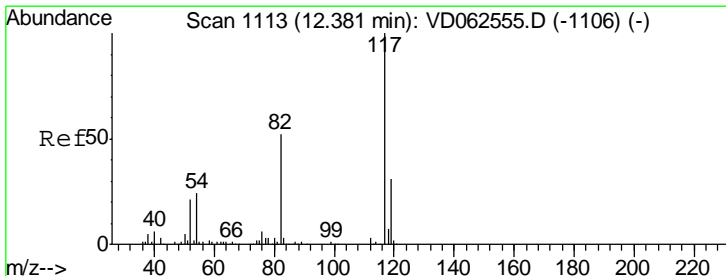
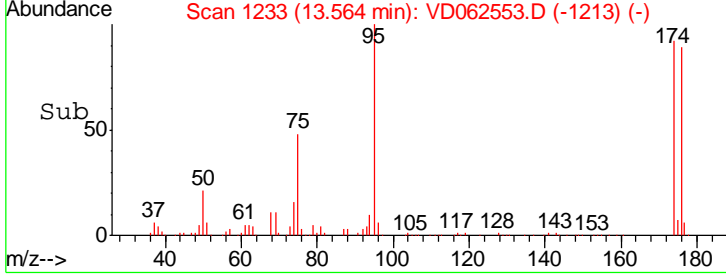
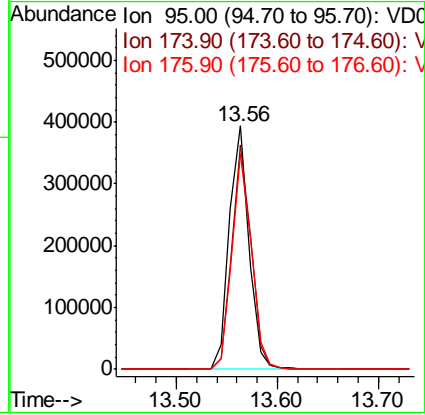
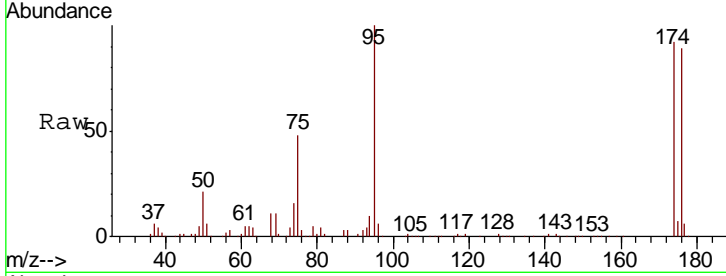
Tgt Ion	Resp	Lower	Upper
63	100		
106	30.5	21.0	31.4





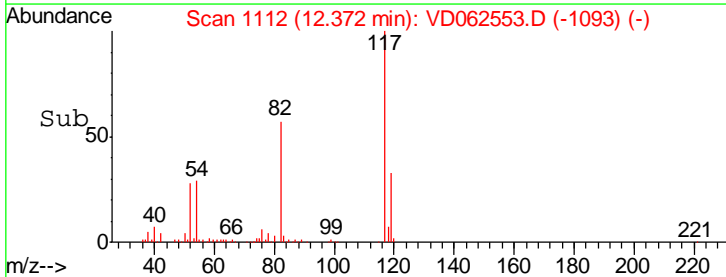
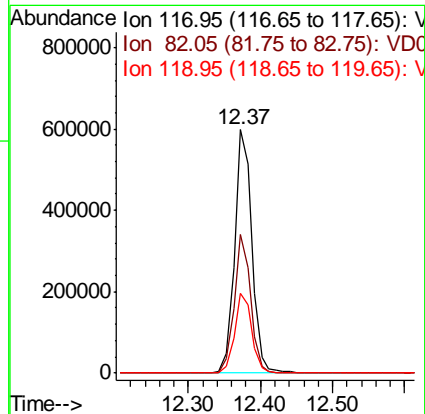
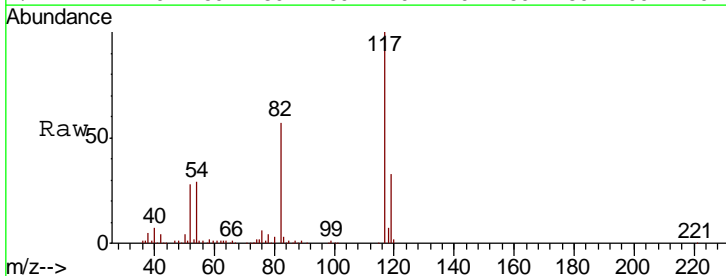
#62
 4-Bromofluorobenzene
 Concen: 49.156 ug/l
 RT: 13.56 min Scan# 1233
 Delta R.T. 0.00 min
 Lab File: VD062553.D
 Acq: 30 May 2019 15:00

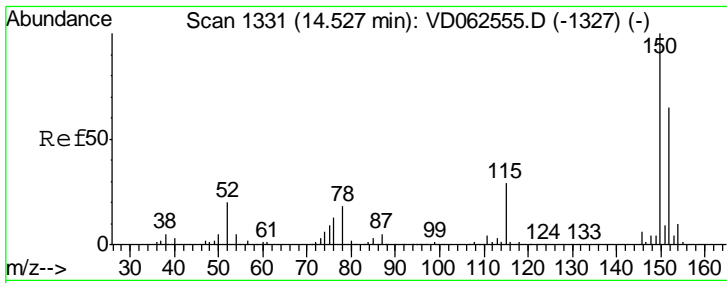
Tgt Ion	Resp	Lower	Upper
95	531710		
174	92.0	0.0	160.2
176	88.6	0.0	148.0



#63
 Chlorobenzene-d5
 Concen: 50.000 ug/l
 RT: 12.37 min Scan# 1112
 Delta R.T. -0.01 min
 Lab File: VD062553.D
 Acq: 30 May 2019 15:00

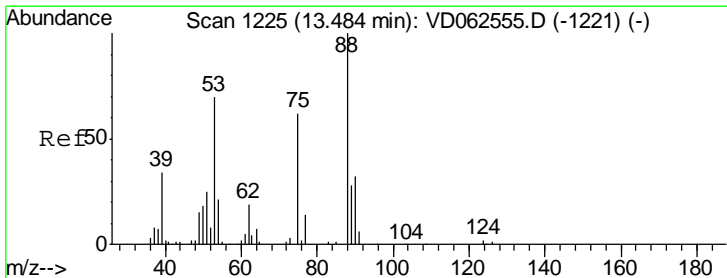
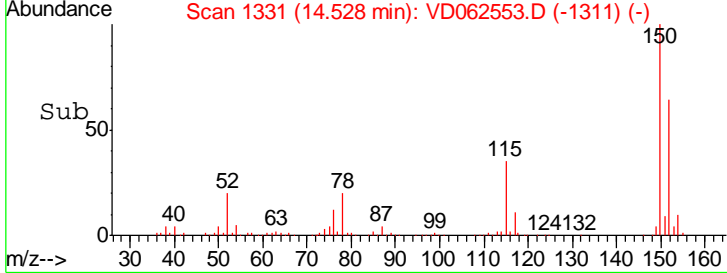
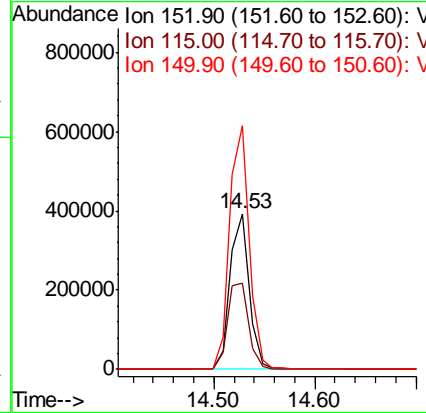
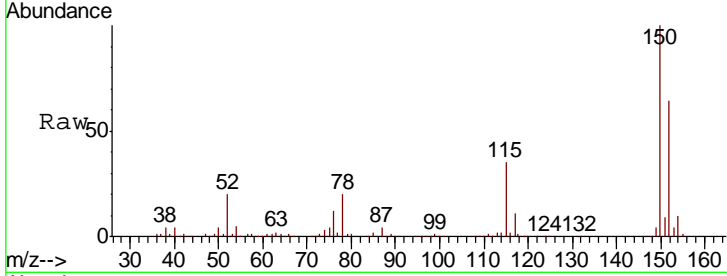
Tgt Ion	Resp	Lower	Upper
117	996877		
82	56.9	41.4	62.2
119	32.6	24.9	37.3





#72
 1,4-Dichlorobenzene-d4
 Concen: 50.000 ug/l
 RT: 14.53 min Scan# 1331
 Delta R.T. 0.00 min
 Lab File: VD062553.D
 Acq: 30 May 2019 15:00

Tgt Ion	Resp	Lower	Upper
152	100		
115	55.1	28.4	85.3
150	156.3	0.0	310.4



#81
 trans-1,4-Dichloro-2-butene
 Concen: 145.129 ug/l
 RT: 13.56 min Scan# 1233
 Delta R.T. 0.08 min
 Lab File: VD062553.D
 Acq: 30 May 2019 15:00

Tgt Ion	Resp	Lower	Upper
75	100		
53	0.0	91.0	136.4#
89	0.0	36.9	55.3#

