

Data Path : Z:\voasrv\HPCHEM1\MSVOA\_D\Data\VD053122\  
 Data File : VD073431.D  
 Acq On : 31 May 2022 18:11  
 Operator : VA/SY  
 Sample : N3104-01RE  
 Misc : 5.38G/5.00ml/MSVOA\_D/SOIL  
 ALS Vial : 10 Sample Multiplier: 1

Instrument :  
 MSVOA\_D  
 ClientSampleId :

Quant Time: Jun 01 01:38:41 2022  
 Quant Method : Z:\voasrv\HPCHEM1\MSVOA\_D\Method\82D051922S.M  
 Quant Title : SW846 8260  
 QLast Update : Thu May 19 15:13:42 2022  
 Response via : Initial Calibration

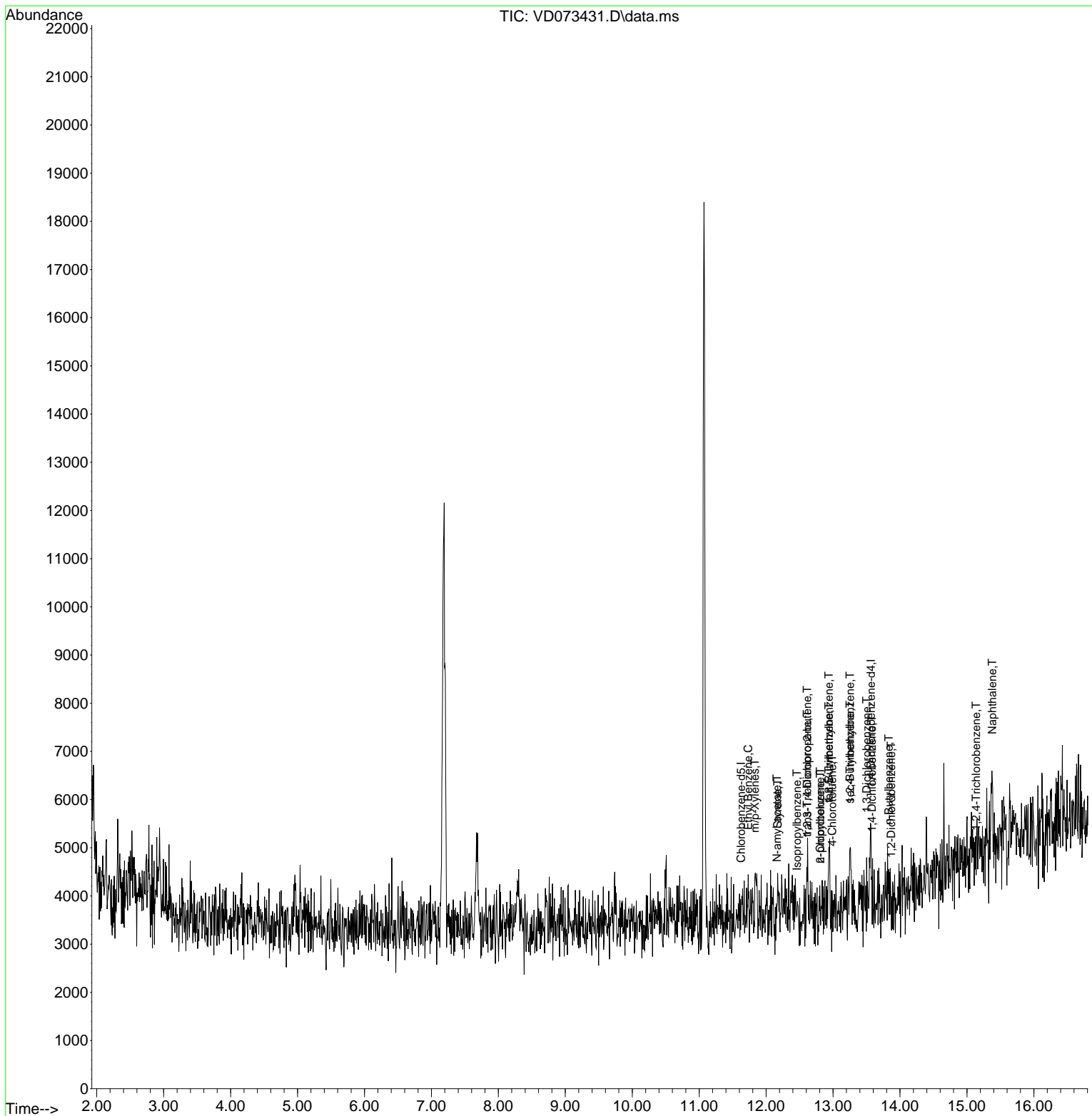
| Compound                      | R.T.   | QIon           | Response | Conc   | Units   | Dev(Min) |
|-------------------------------|--------|----------------|----------|--------|---------|----------|
| -----                         |        |                |          |        |         |          |
| Internal Standards            |        |                |          |        |         |          |
| 1) Pentafluorobenzene         | 0.000  | 168            | 0        | 0.000  | ug/l    | -7.97    |
| 34) 1,4-Difluorobenzene       | 0.000  | 114            | 0        | 0.000  | ug/l    | -8.86    |
| 63) Chlorobenzene-d5          | 11.626 | 117            | 488      | 50.000 | ug/l    | #-0.01   |
| 72) 1,4-Dichlorobenzene-d4    | 13.567 | 152            | 341      | 50.000 | ug/l    | 0.00     |
| System Monitoring Compounds   |        |                |          |        |         |          |
| 33) 1,2-Dichloroethane-d4     | 0.000  | 65             | 0        | 0.000  | ug/l    |          |
| Spiked Amount                 | 50.000 | Range 50 - 163 | Recovery | =      | 0.000%# |          |
| 35) Dibromofluoromethane      | 0.000  | 113            | 0        | 0.000  | ug/l    |          |
| Spiked Amount                 | 50.000 | Range 54 - 147 | Recovery | =      | 0.000%# |          |
| 50) Toluene-d8                | 10.338 | 98             | 188      | 0.000  | ug/l    | 0.00     |
| Spiked Amount                 | 50.000 | Range 49 - 140 | Recovery | =      | 0.000%# |          |
| 62) 4-Bromofluorobenzene      | 12.614 | 95             | 265      | 0.000  | ug/l    | 0.00     |
| Spiked Amount                 | 50.000 | Range 25 - 144 | Recovery | =      | 0.000%# |          |
| Target Compounds              |        |                |          |        |         |          |
|                               |        |                |          |        |         | Qvalue   |
| 67) Ethyl Benzene             | 11.732 | 91             | 475      | 27.028 | ug/l #  | 67       |
| 68) m/p-Xylenes               | 11.832 | 106            | 395      | 57.851 | ug/l #  | 50       |
| 70) Styrene                   | 12.173 | 104            | 66       | 6.116  | ug/l #  | 25       |
| 73) Isopropylbenzene          | 12.461 | 105            | 110      | 4.525  | ug/l #  | 49       |
| 74) N-amyl acetate            | 12.161 | 43             | 64       | 12.068 | ug/l #  | 45       |
| 76) 1,2,3-Trichloropropane    | 12.614 | 75             | 66       | 19.726 | ug/l #  | 100      |
| 78) n-propylbenzene           | 12.808 | 91             | 409      | 13.402 | ug/l #  | 54       |
| 79) 2-Chlorotoluene           | 12.808 | 91             | 409      | 23.211 | ug/l #  | 42       |
| 80) 1,3,5-Trimethylbenzene    | 12.937 | 105            | 123      | 5.973  | ug/l #  | 29       |
| 81) trans-1,4-Dichloro-2-b... | 12.614 | 75             | 66       | 47.357 | ug/l #  | 7        |
| 82) 4-Chlorotoluene           | 12.985 | 91             | 136      | 7.363  | ug/l #  | 42       |
| 83) tert-Butylbenzene         | 12.937 | 119            | 62       | 3.572  | ug/l #  | 24       |
| 84) 1,2,4-Trimethylbenzene    | 13.255 | 105            | 657      | 32.295 | ug/l #  | 73       |
| 85) sec-Butylbenzene          | 13.255 | 105            | 657      | 24.792 | ug/l #  | 57       |
| 87) 1,3-Dichlorobenzene       | 13.502 | 146            | 134      | 11.617 | ug/l #  | 25       |
| 88) 1,4-Dichlorobenzene       | 13.579 | 146            | 152      | 13.054 | ug/l #  | 1        |
| 89) n-Butylbenzene            | 13.832 | 91             | 71       | 3.449  | ug/l #  | 8        |
| 91) 1,2-Dichlorobenzene       | 13.867 | 146            | 55       | 5.511  | ug/l #  | 24       |
| 93) 1,2,4-Trichlorobenzene    | 15.137 | 180            | 138      | 24.356 | ug/l #  | 12       |
| 95) Naphthalene               | 15.379 | 128            | 1150     | 99.298 | ug/l #  | 70       |
| -----                         |        |                |          |        |         |          |

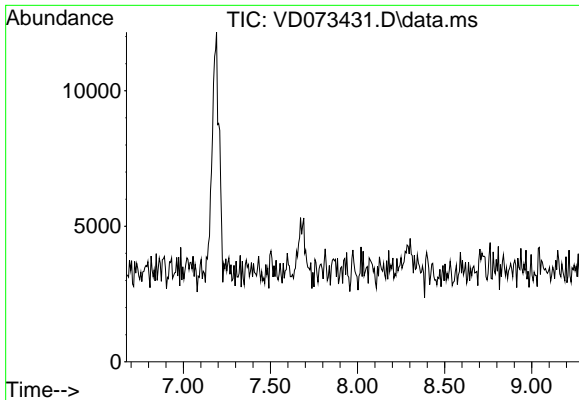
(#) = qualifier out of range (m) = manual integration (+) = signals summed

Data Path : Z:\voasrv\HPCHEM1\MSVOA\_D\Data\VD053122\  
 Data File : VD073431.D  
 Acq On : 31 May 2022 18:11  
 Operator : VA/SY  
 Sample : N3104-01RE  
 Misc : 5.38G/5.00ml/MSVOA\_D/SOIL  
 ALS Vial : 10 Sample Multiplier: 1

Instrument :  
 MSVOA\_D  
 ClientSampleId :

Quant Time: Jun 01 01:38:41 2022  
 Quant Method : Z:\voasrv\HPCHEM1\MSVOA\_D\Method\82D051922S.M  
 Quant Title : SW846 8260  
 QLast Update : Thu May 19 15:13:42 2022  
 Response via : Initial Calibration

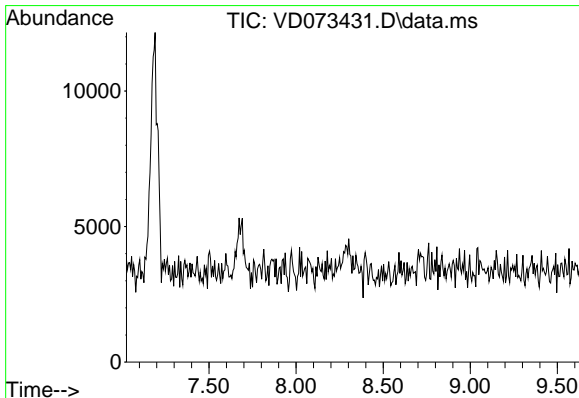
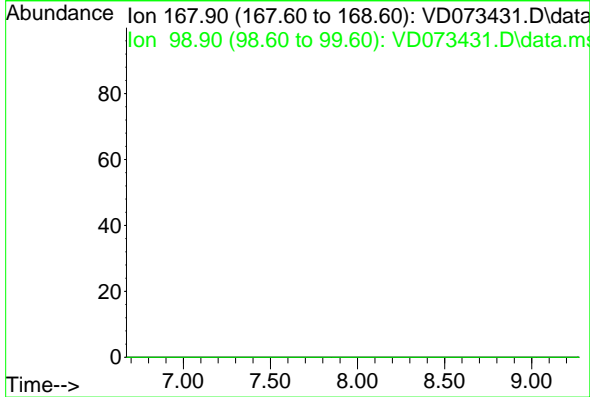




#1  
 Pentafluorobenzene  
 Concen: 0.000 ug/l  
 Expected RT: 7.97 min  
 Lab File: VD073431.D  
 Acq: 31 May 2022 18:11

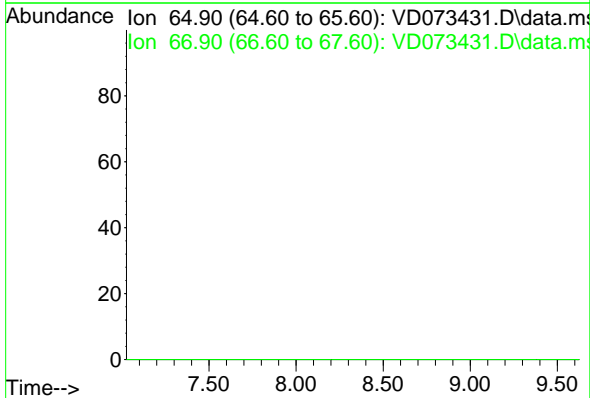
Instrument :  
 MSVOA\_D  
 ClientSampleId :

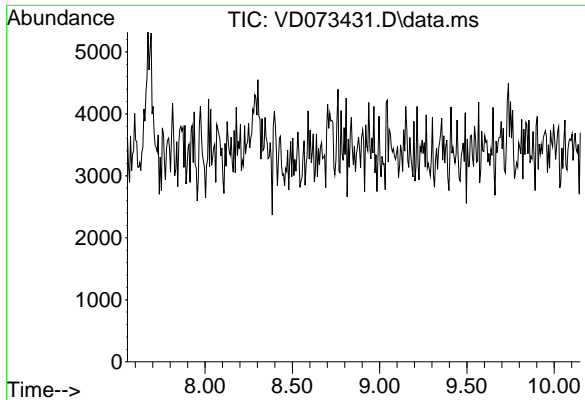
Tgt Ion: 168  
 Sig Exp Ratio  
 168 100  
 99 62.2



#33  
 1,2-Dichloroethane-d4  
 Concen: 0.000 ug/l  
 Expected RT: 8.33 min  
 Lab File: VD073431.D  
 Acq: 31 May 2022 18:11

Tgt Ion: 65  
 Sig Exp Ratio  
 65 100  
 67 50.7

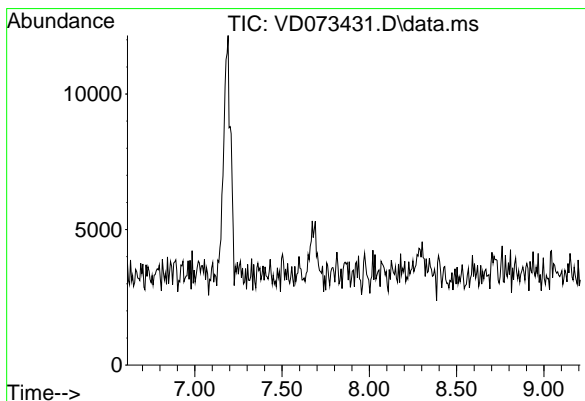
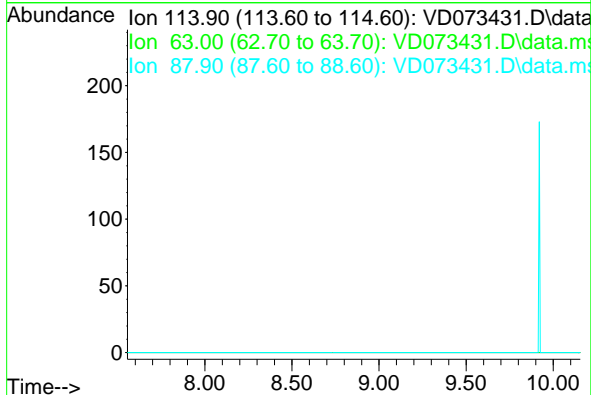




#34  
 1,4-Difluorobenzene  
 Concen: 0.000 ug/l  
 Expected RT: 8.86 min  
 Lab File: VD073431.D  
 Acq: 31 May 2022 18:11

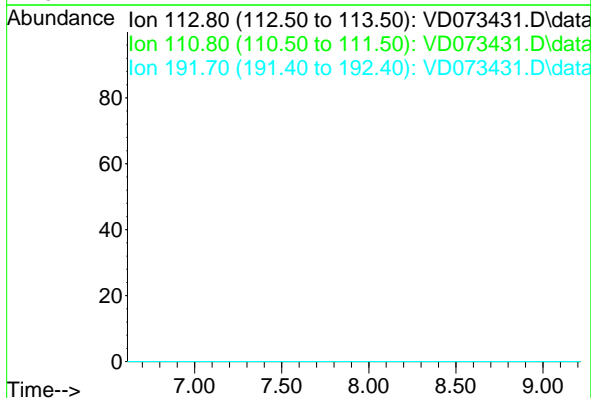
Instrument :  
 MSVOA\_D  
 ClientSampleId :

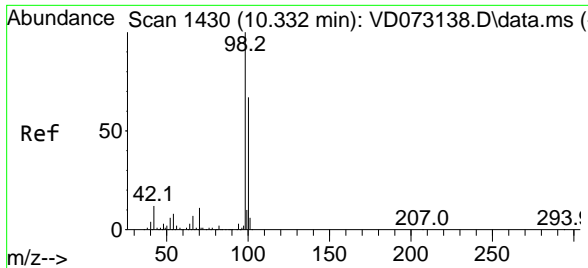
Tgt Ion: 114  
 Sig Exp Ratio  
 114 100  
 63 23.3  
 88 16.6



#35  
 Dibromofluoromethane  
 Concen: 0.000 ug/l  
 Expected RT: 7.91 min  
 Lab File: VD073431.D  
 Acq: 31 May 2022 18:11

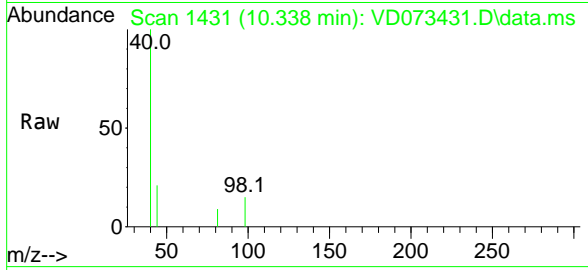
Tgt Ion: 113  
 Sig Exp Ratio  
 113 100  
 111 104.7  
 192 18.2



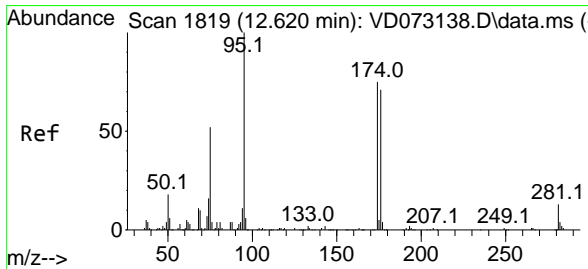
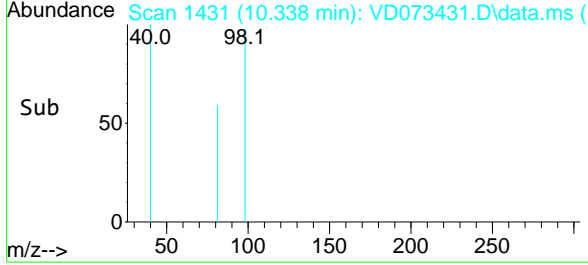
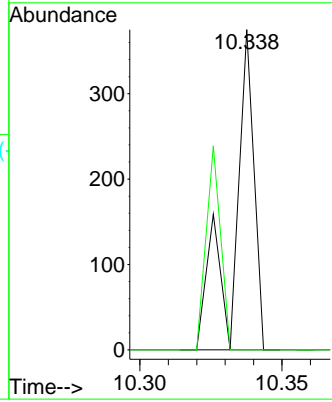


#50  
 Toluene-d8  
 Concen: 0.000 ug/l  
 RT: 10.338 min Scan# 1431  
 Delta R.T. 0.006 min  
 Lab File: VD073431.D  
 Acq: 31 May 2022 18:11

Instrument : MSVOA\_D  
 ClientSampleId :

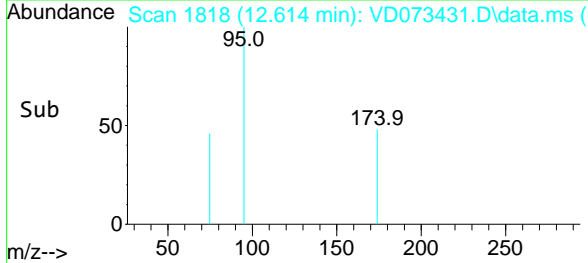
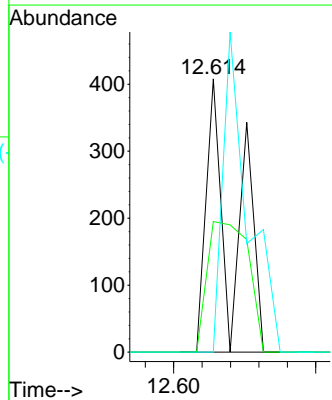
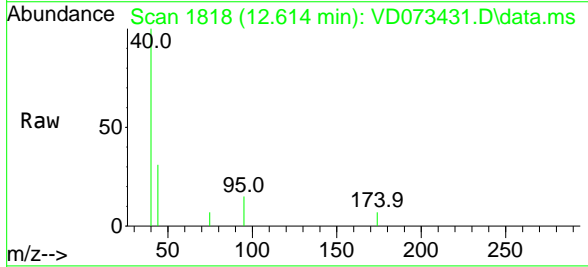


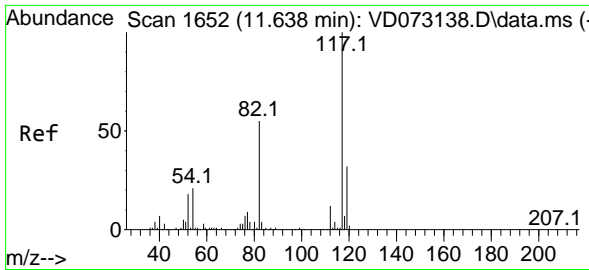
Tgt Ion: 98 Resp: 188  
 Ion Ratio Lower Upper  
 98 100  
 100 44.7 52.4 78.6#



#62  
 4-Bromofluorobenzene  
 Concen: 0.000 ug/l  
 RT: 12.614 min Scan# 1818  
 Delta R.T. -0.006 min  
 Lab File: VD073431.D  
 Acq: 31 May 2022 18:11

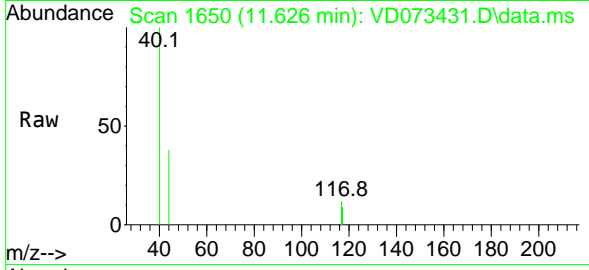
Tgt Ion: 95 Resp: 265  
 Ion Ratio Lower Upper  
 95 100  
 174 73.6 0.0 152.8  
 176 109.4 0.0 145.4



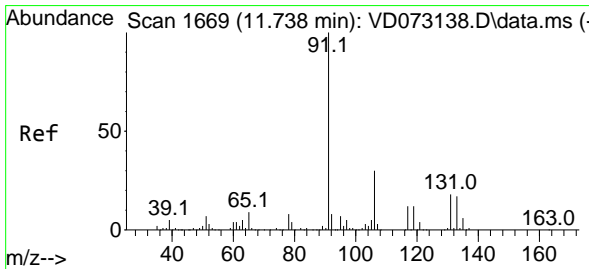
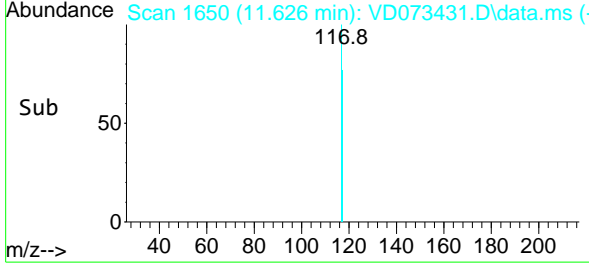
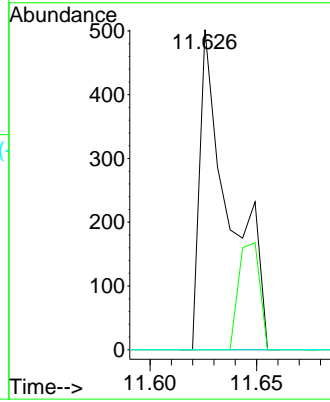


#63  
 Chlorobenzene-d5  
 Concen: 50.000 ug/l  
 RT: 11.626 min Scan# 11  
 Delta R.T. -0.012 min  
 Lab File: VD073431.D  
 Acq: 31 May 2022 18:11

Instrument :  
 MSVOA\_D  
 ClientSampleId :

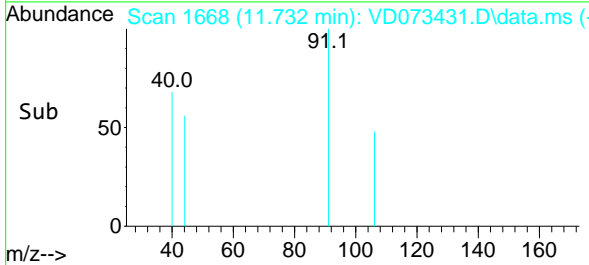
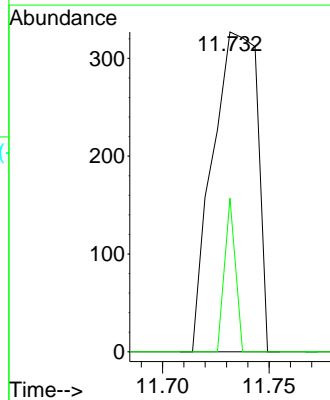
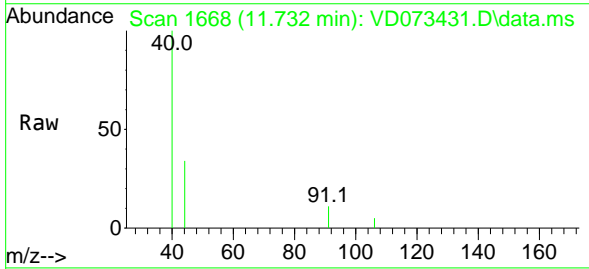


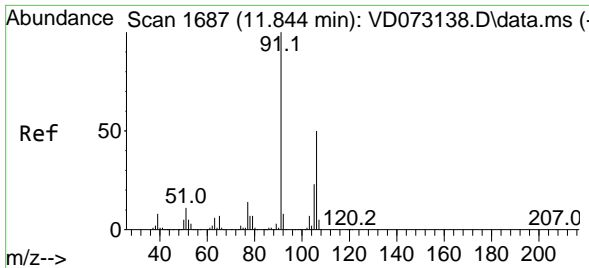
Tgt Ion:117 Resp: 488  
 Ion Ratio Lower Upper  
 117 100  
 82 0.0 45.3 67.9#  
 119 0.0 26.6 40.0#



#67  
 Ethyl Benzene  
 Concen: 27.028 ug/l  
 RT: 11.732 min Scan# 1668  
 Delta R.T. -0.006 min  
 Lab File: VD073431.D  
 Acq: 31 May 2022 18:11

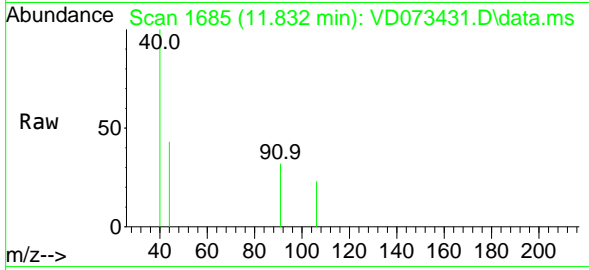
Tgt Ion: 91 Resp: 475  
 Ion Ratio Lower Upper  
 91 100  
 106 48.0 24.2 36.4#



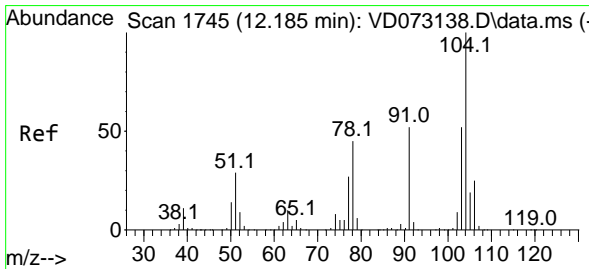
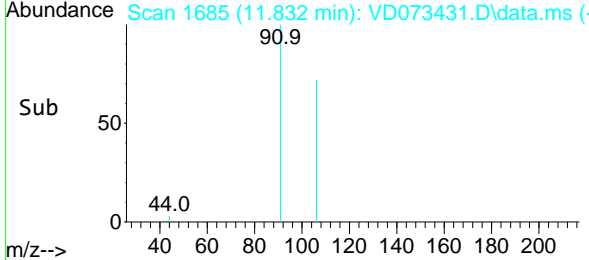
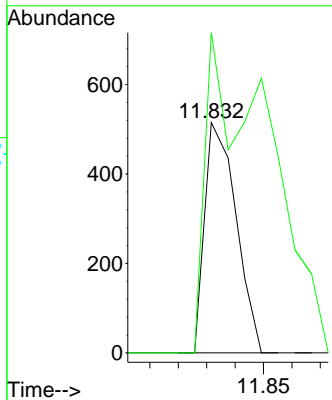


#68  
 m/p-Xylenes  
 Concen: 57.851 ug/l  
 RT: 11.832 min Scan# 11  
 Delta R.T. -0.012 min  
 Lab File: VD073431.D  
 Acq: 31 May 2022 18:11

Instrument : MSVOA\_D  
 ClientSampleId :

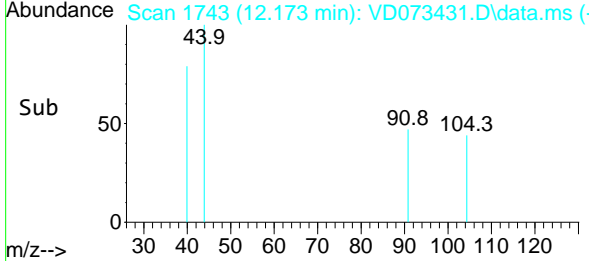
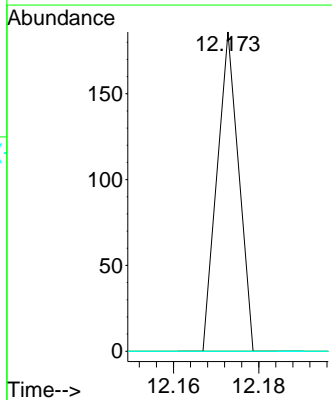
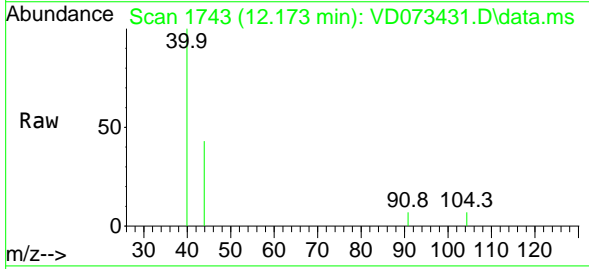


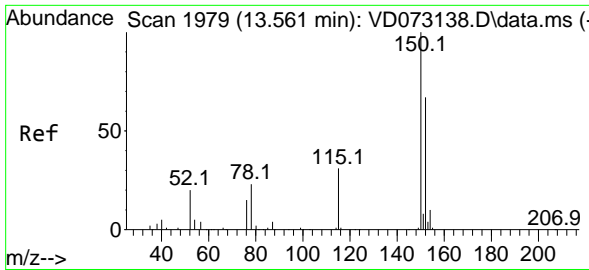
Tgt Ion:106 Resp: 395  
 Ion Ratio Lower Upper  
 106 100  
 91 281.3 163.7 245.5#



#70  
 Styrene  
 Concen: 6.116 ug/l  
 RT: 12.173 min Scan# 1743  
 Delta R.T. -0.012 min  
 Lab File: VD073431.D  
 Acq: 31 May 2022 18:11

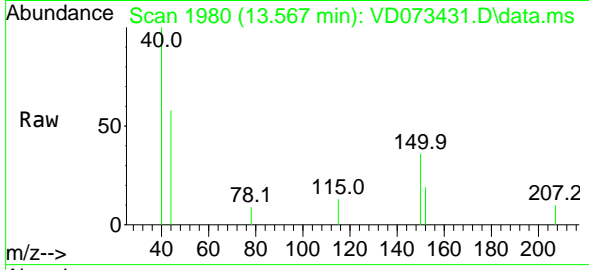
Tgt Ion:104 Resp: 66  
 Ion Ratio Lower Upper  
 104 100  
 78 0.0 41.8 62.8#  
 103 0.0 44.2 66.4#



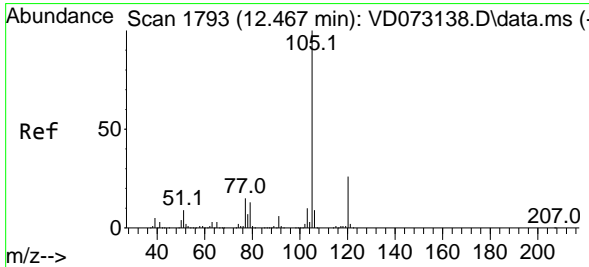
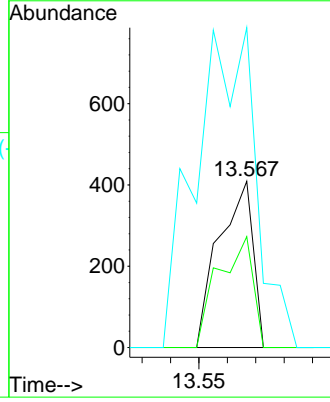
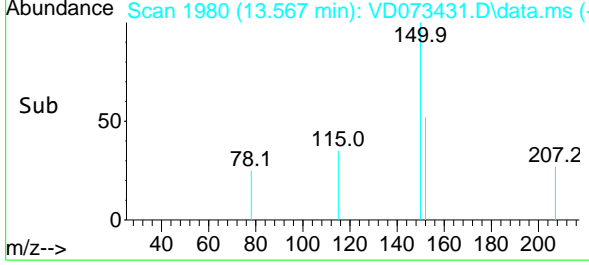


#72  
 1,4-Dichlorobenzene-d4  
 Concen: 50.000 ug/l  
 RT: 13.567 min Scan# 1980  
 Delta R.T. 0.006 min  
 Lab File: VD073431.D  
 Acq: 31 May 2022 18:11

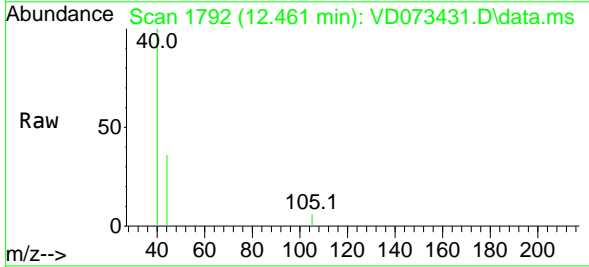
Instrument : MSVOA\_D  
 ClientSampleId :



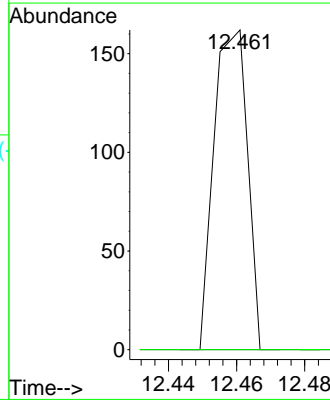
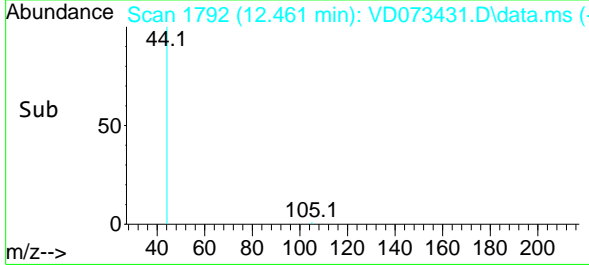
Tgt Ion:152 Resp: 341  
 Ion Ratio Lower Upper  
 152 100  
 115 67.7 31.3 93.8  
 150 338.1 0.0 348.6



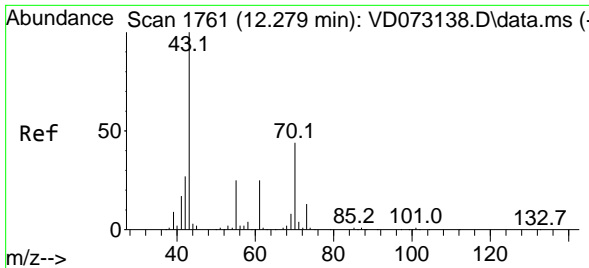
#73  
 Isopropylbenzene  
 Concen: 4.525 ug/l  
 RT: 12.461 min Scan# 1792  
 Delta R.T. -0.006 min  
 Lab File: VD073431.D  
 Acq: 31 May 2022 18:11



Tgt Ion:105 Resp: 110  
 Ion Ratio Lower Upper  
 105 100  
 120 0.0 13.0 38.9#

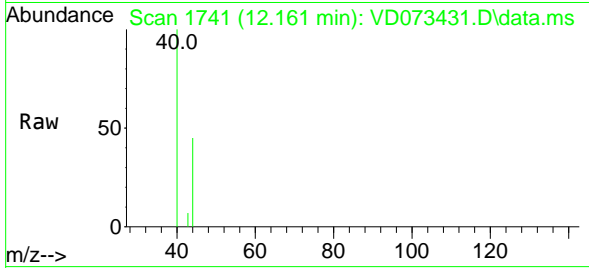




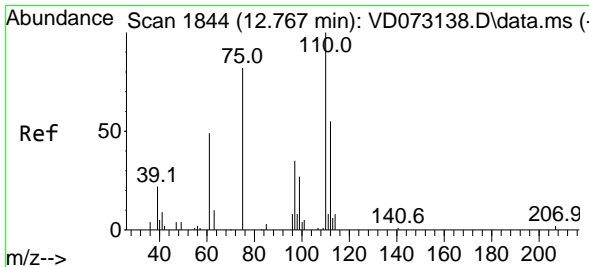
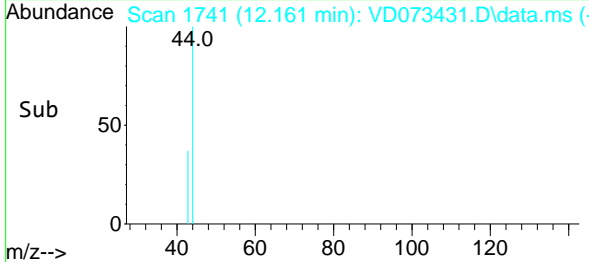
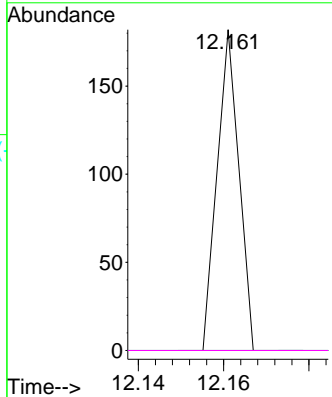


#74  
 N-amy1 acetate  
 Concen: 12.068 ug/l  
 RT: 12.161 min Scan# 1818  
 Delta R.T. -0.118 min  
 Lab File: VD073431.D  
 Acq: 31 May 2022 18:11

Instrument : MSVOA\_D  
 ClientSampleId :

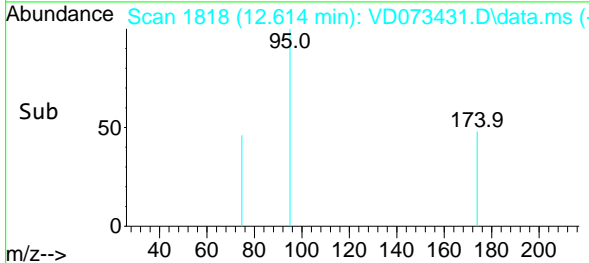
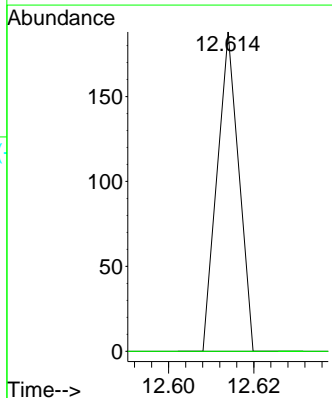
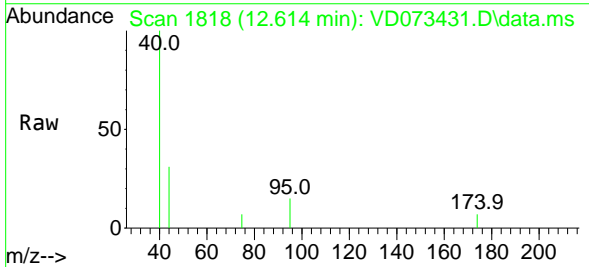


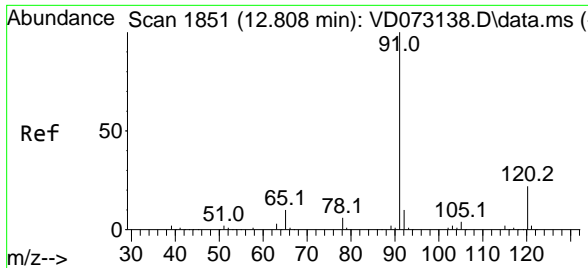
| Tgt Ion | Resp | Lower | Upper |
|---------|------|-------|-------|
| 43      | 100  |       |       |
| 70      | 0.0  | 31.3  | 46.9# |
| 55      | 0.0  | 20.0  | 30.0# |
| 61      | 0.0  | 17.8  | 26.8# |



#76  
 1,2,3-Trichloropropane  
 Concen: 19.726 ug/l  
 RT: 12.614 min Scan# 1818  
 Delta R.T. -0.153 min  
 Lab File: VD073431.D  
 Acq: 31 May 2022 18:11

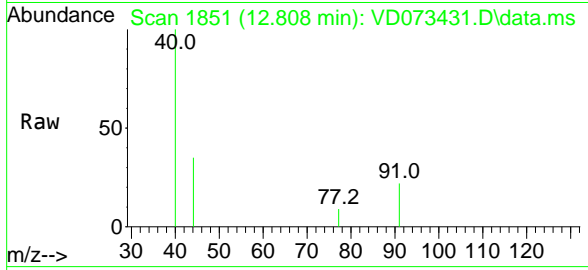
| Tgt Ion | Resp | Lower | Upper |
|---------|------|-------|-------|
| 75      | 100  |       |       |
| 77      | 0.0  | 0.0   | 0.0   |



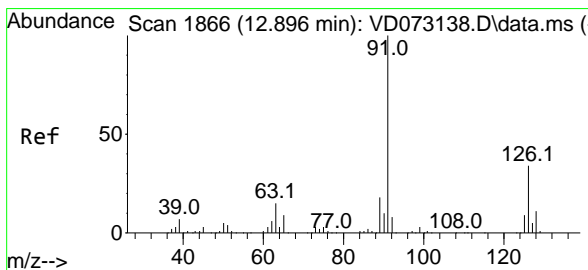
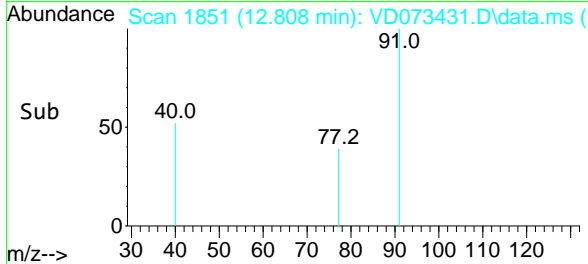
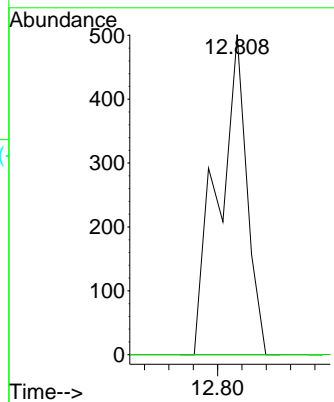


#78  
 n-propylbenzene  
 Concen: 13.402 ug/l  
 RT: 12.808 min Scan# 1851  
 Delta R.T. 0.000 min  
 Lab File: VD073431.D  
 Acq: 31 May 2022 18:11

Instrument : MSVOA\_D  
 ClientSampleId :

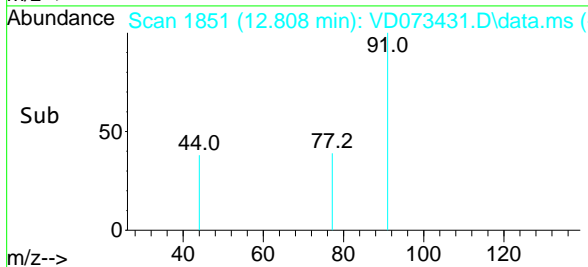
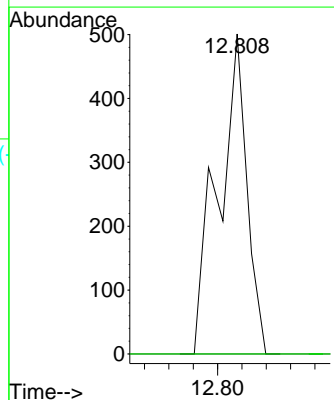
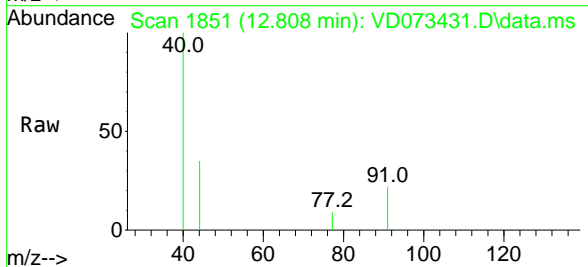


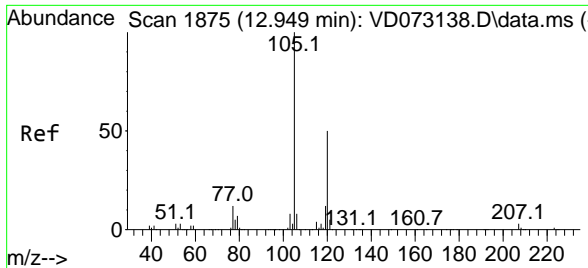
Tgt Ion: 91 Resp: 409  
 Ion Ratio Lower Upper  
 91 100  
 120 0.0 10.9 32.9#



#79  
 2-Chlorotoluene  
 Concen: 23.211 ug/l  
 RT: 12.808 min Scan# 1851  
 Delta R.T. -0.088 min  
 Lab File: VD073431.D  
 Acq: 31 May 2022 18:11

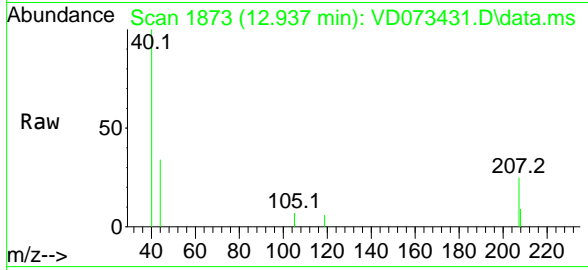
Tgt Ion: 91 Resp: 409  
 Ion Ratio Lower Upper  
 91 100  
 126 0.0 16.2 48.6#



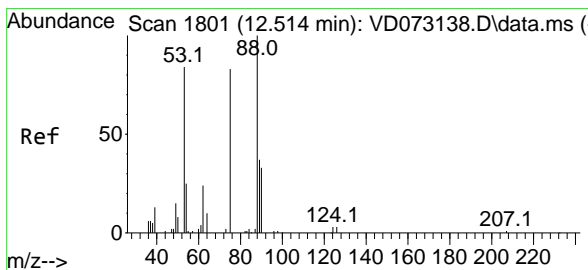
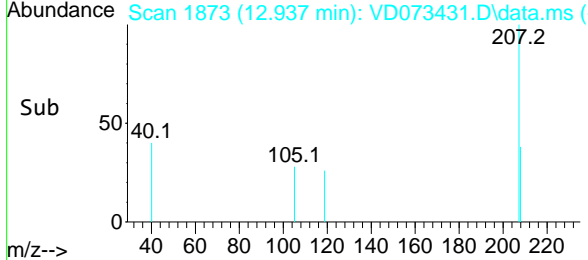
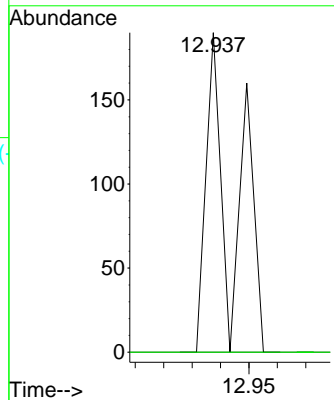


#80  
 1,3,5-Trimethylbenzene  
 Concen: 5.973 ug/l  
 RT: 12.937 min Scan# 1873  
 Delta R.T. -0.012 min  
 Lab File: VD073431.D  
 Acq: 31 May 2022 18:11

Instrument : MSVOA\_D  
 ClientSampleId :

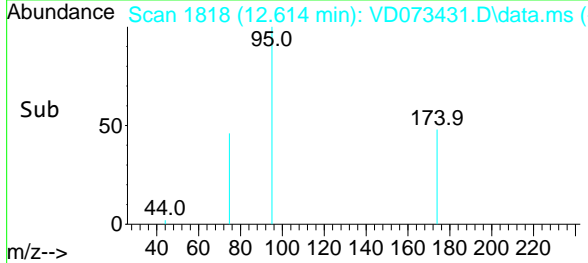
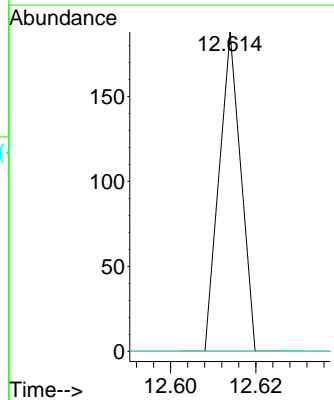
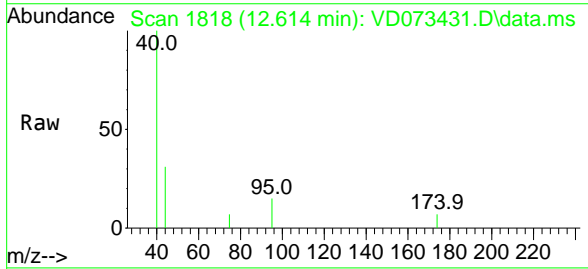


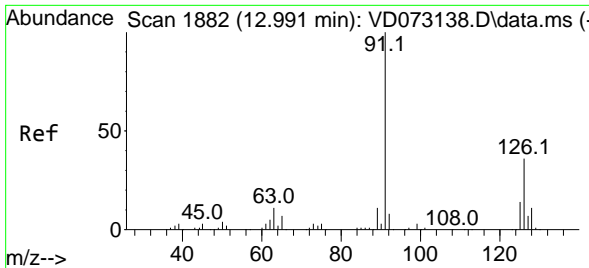
Tgt Ion:105 Resp: 123  
 Ion Ratio Lower Upper  
 105 100  
 120 0.0 24.3 72.8#



#81  
 trans-1,4-Dichloro-2-butene  
 Concen: 47.357 ug/l  
 RT: 12.614 min Scan# 1818  
 Delta R.T. 0.100 min  
 Lab File: VD073431.D  
 Acq: 31 May 2022 18:11

Tgt Ion: 75 Resp: 66  
 Ion Ratio Lower Upper  
 75 100  
 53 0.0 86.5 129.7#  
 89 0.0 33.9 50.9#

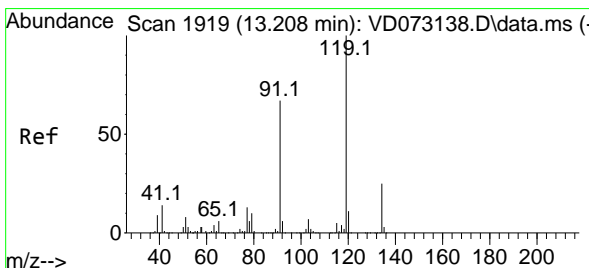
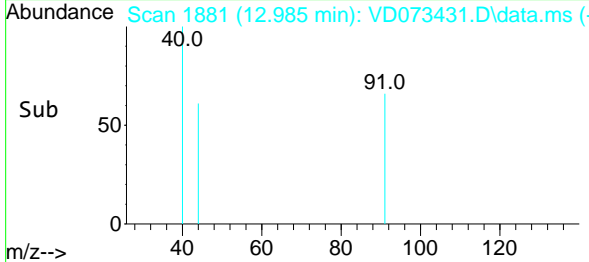
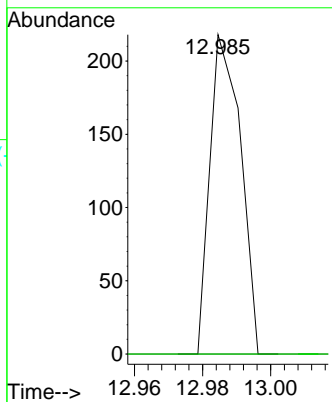
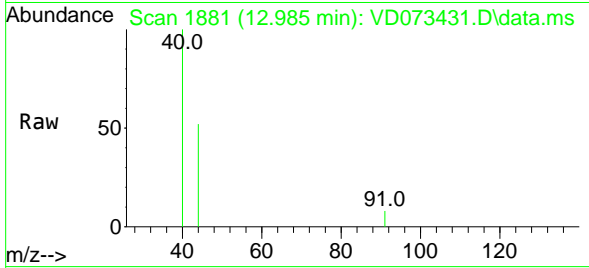




#82  
 4-Chlorotoluene  
 Concen: 7.363 ug/l  
 RT: 12.985 min Scan# 1881  
 Delta R.T. -0.006 min  
 Lab File: VD073431.D  
 Acq: 31 May 2022 18:11

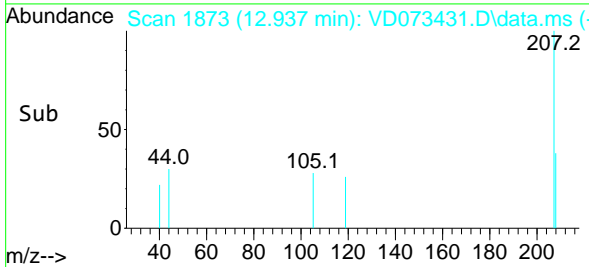
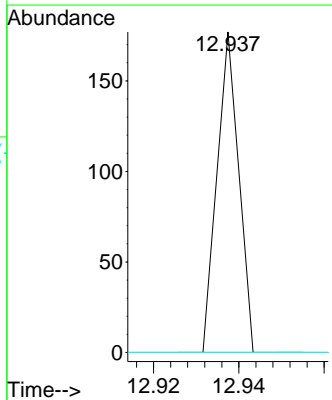
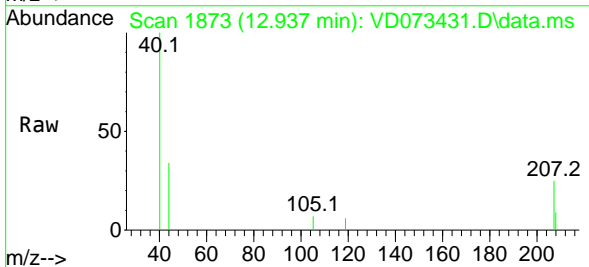
Instrument : MSVOA\_D  
 ClientSampleId :

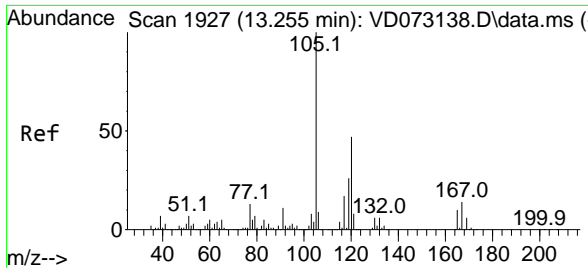
Tgt Ion: 91 Resp: 136  
 Ion Ratio Lower Upper  
 91 100  
 126 0.0 16.5 49.5#



#83  
 tert-Butylbenzene  
 Concen: 3.572 ug/l  
 RT: 12.937 min Scan# 1873  
 Delta R.T. -0.271 min  
 Lab File: VD073431.D  
 Acq: 31 May 2022 18:11

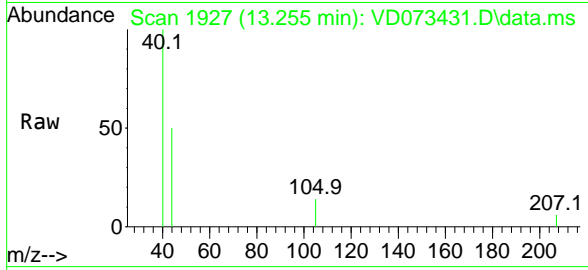
Tgt Ion: 119 Resp: 62  
 Ion Ratio Lower Upper  
 119 100  
 91 0.0 34.8 104.5#  
 134 0.0 13.3 39.9#



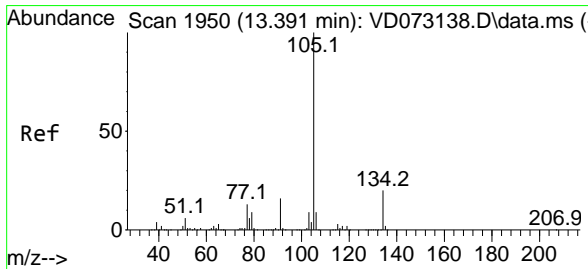
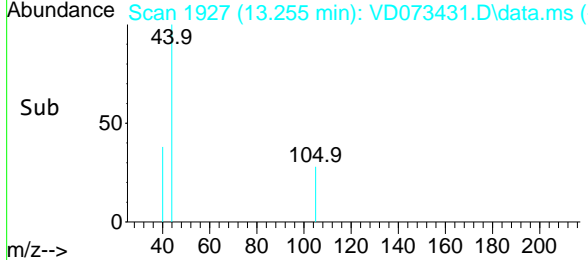
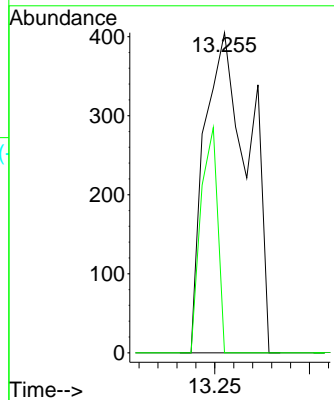


#84  
 1,2,4-Trimethylbenzene  
 Concen: 32.295 ug/l  
 RT: 13.255 min Scan# 1927  
 Delta R.T. 0.000 min  
 Lab File: VD073431.D  
 Acq: 31 May 2022 18:11

Instrument : MSVOA\_D  
 ClientSampleId :

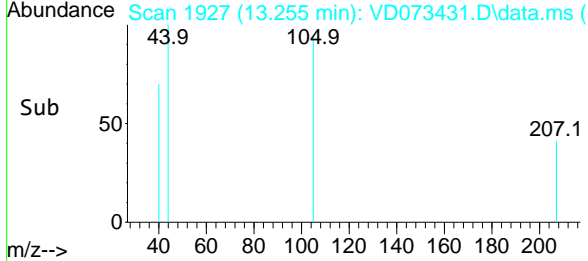
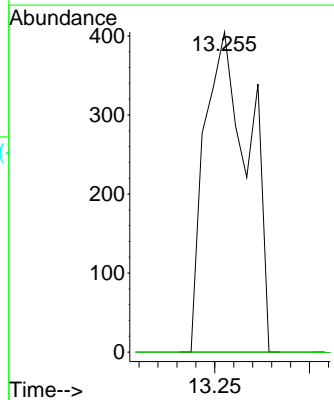
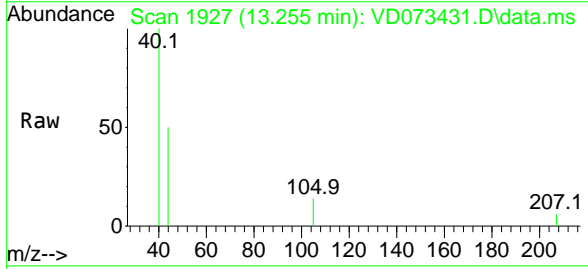


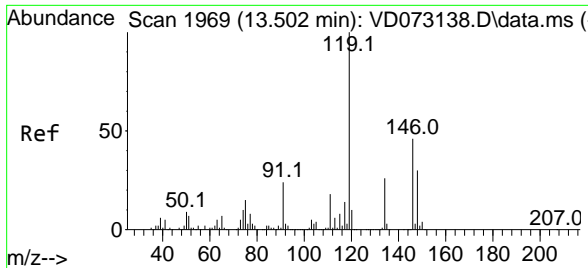
Tgt Ion:105 Resp: 657  
 Ion Ratio Lower Upper  
 105 100  
 120 26.6 22.3 66.8



#85  
 sec-Butylbenzene  
 Concen: 24.792 ug/l  
 RT: 13.255 min Scan# 1927  
 Delta R.T. -0.136 min  
 Lab File: VD073431.D  
 Acq: 31 May 2022 18:11

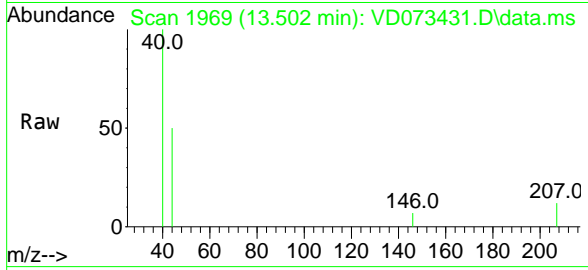
Tgt Ion:105 Resp: 657  
 Ion Ratio Lower Upper  
 105 100  
 134 0.0 9.8 29.3#



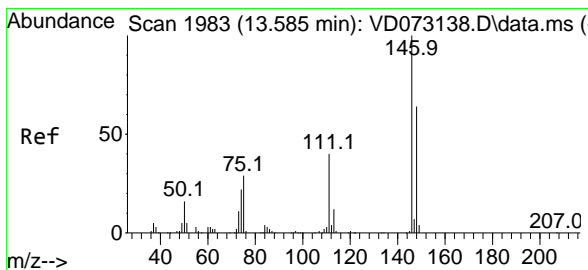
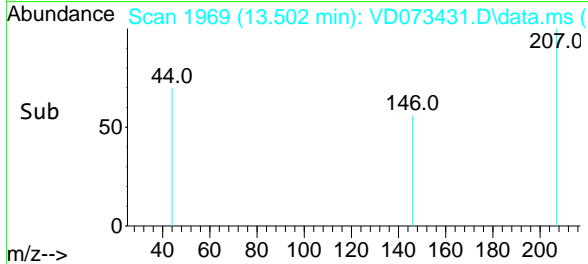
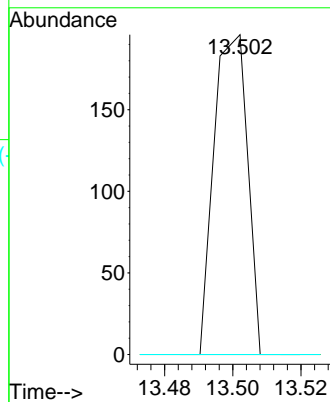


#87  
 1,3-Dichlorobenzene  
 Concen: 11.617 ug/l  
 RT: 13.502 min Scan# 1969  
 Delta R.T. 0.000 min  
 Lab File: VD073431.D  
 Acq: 31 May 2022 18:11

Instrument : MSVOA\_D  
 ClientSampleId :

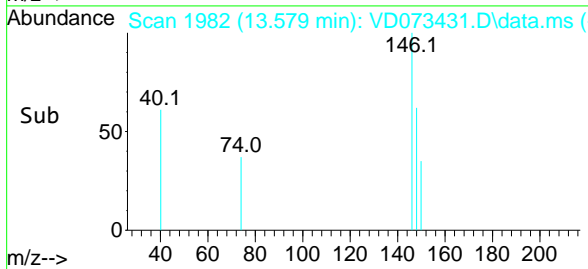
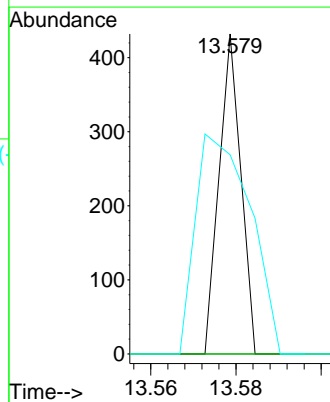
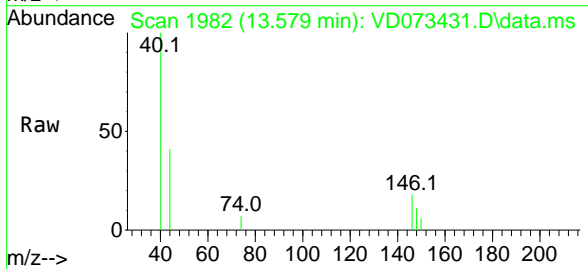


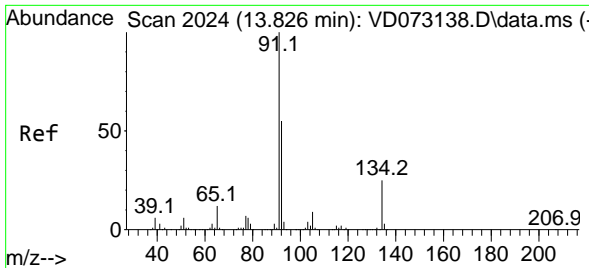
Tgt Ion:146 Resp: 134  
 Ion Ratio Lower Upper  
 146 100  
 111 0.0 20.4 61.3#  
 148 0.0 31.9 95.7#



#88  
 1,4-Dichlorobenzene  
 Concen: 13.054 ug/l  
 RT: 13.579 min Scan# 1982  
 Delta R.T. -0.006 min  
 Lab File: VD073431.D  
 Acq: 31 May 2022 18:11

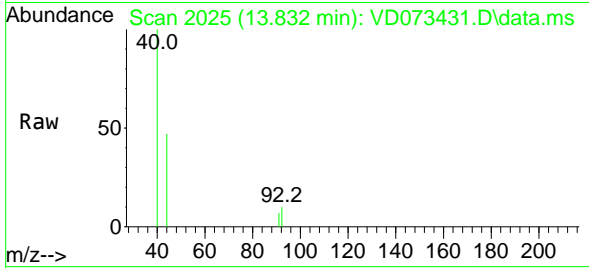
Tgt Ion:146 Resp: 152  
 Ion Ratio Lower Upper  
 146 100  
 111 0.0 20.3 60.9#  
 148 173.7 31.7 95.1#





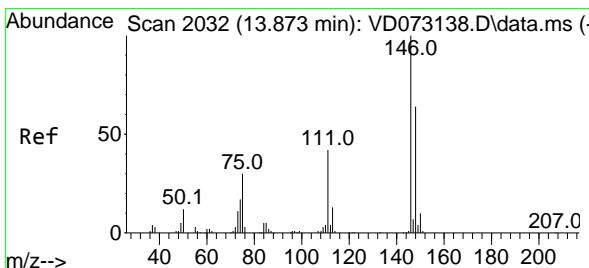
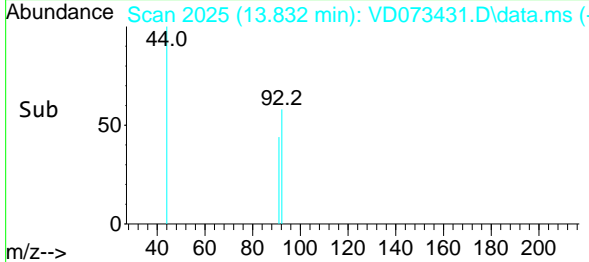
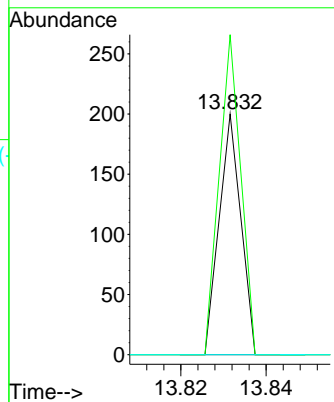
#89  
 n-Butylbenzene  
 Concen: 3.449 ug/l  
 RT: 13.832 min Scan# 2025  
 Delta R.T. 0.006 min  
 Lab File: VD073431.D  
 Acq: 31 May 2022 18:11

Instrument :  
 MSVOA\_D  
 ClientSampleId :



Tgt Ion: 91 Resp: 71

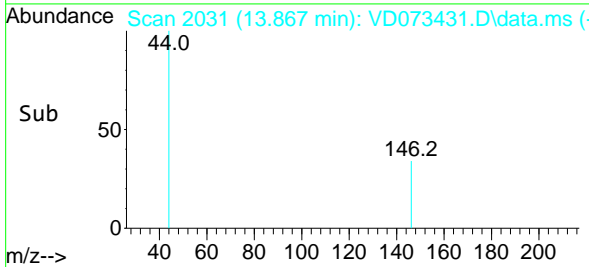
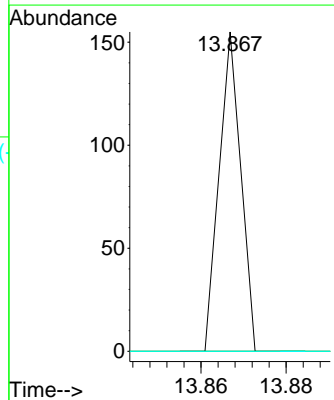
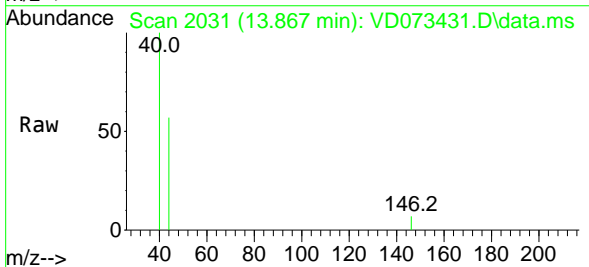
| Ion | Ratio | Lower | Upper |
|-----|-------|-------|-------|
| 91  | 100   |       |       |
| 92  | 132.4 | 26.6  | 79.8# |
| 134 | 0.0   | 12.3  | 36.9# |

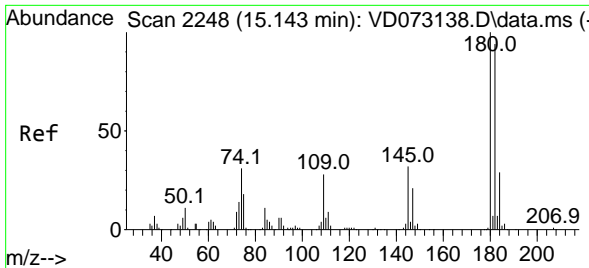


#91  
 1,2-Dichlorobenzene  
 Concen: 5.511 ug/l  
 RT: 13.867 min Scan# 2031  
 Delta R.T. -0.006 min  
 Lab File: VD073431.D  
 Acq: 31 May 2022 18:11

Tgt Ion: 146 Resp: 55

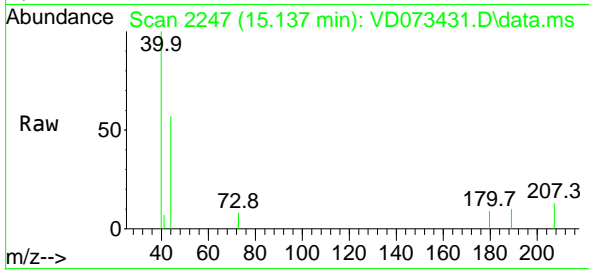
| Ion | Ratio | Lower | Upper |
|-----|-------|-------|-------|
| 146 | 100   |       |       |
| 111 | 0.0   | 21.1  | 63.3# |
| 148 | 0.0   | 31.7  | 95.1# |



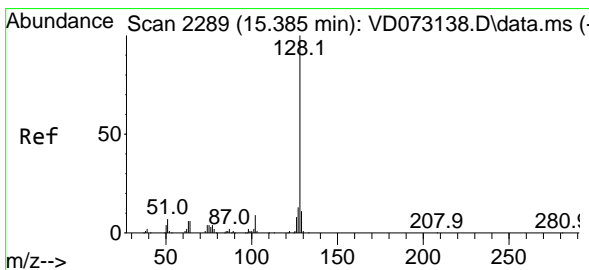
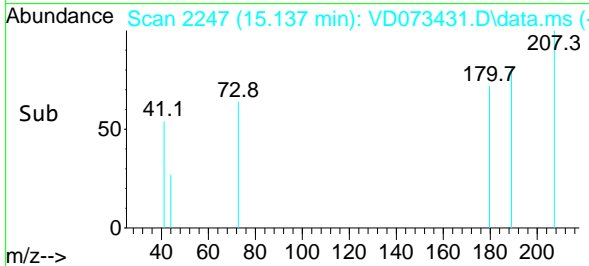
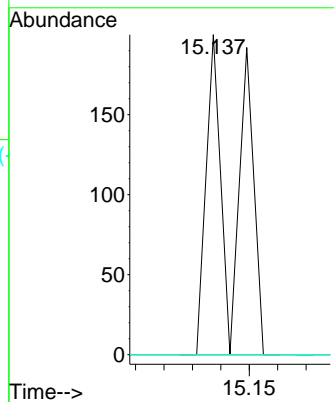


#93  
 1,2,4-Trichlorobenzene  
 Concen: 24.356 ug/l  
 RT: 15.137 min Scan# 21  
 Delta R.T. -0.006 min  
 Lab File: VD073431.D  
 Acq: 31 May 2022 18:11

Instrument :  
 MSVOA\_D  
 ClientSampleId :



Tgt Ion:180 Resp: 138  
 Ion Ratio Lower Upper  
 180 100  
 182 0.0 47.3 142.0#  
 145 0.0 16.2 48.5#



#95  
 Naphthalene  
 Concen: 99.298 ug/l  
 RT: 15.379 min Scan# 2288  
 Delta R.T. -0.006 min  
 Lab File: VD073431.D  
 Acq: 31 May 2022 18:11

Tgt Ion:128 Resp: 1150  
 Ion Ratio Lower Upper  
 128 100  
 127 0.0 10.3 15.5#  
 129 0.0 8.4 12.6#

