

Data Path : Z:\VOASRV\HPCHEM1\MSVOA D\DATA\VD060718\  
 Data File : VD057978.D  
 Acq On : 7 Jun 2018 18:14  
 Operator : JC/SY  
 Sample : J3252-01  
 Misc : 5.30µ/5ml/MSVOA D/SOIL  
 ALS Vial : 38 Sample Multiplier: 1

Instrument :  
 MSVOA\_D  
 ClientSampleID :  
 TR-04-060618

Quant Time: Jun 08 07:54:25 2018  
 Quant Method : Z:\VOASRV\HPCHEM1\MSVOA\_D\METHOD\82D060618S.M  
 Quant Title : SW846 8260  
 QLast Update : Thu Jun 07 08:57:33 2018  
 Response via : Initial Calibration

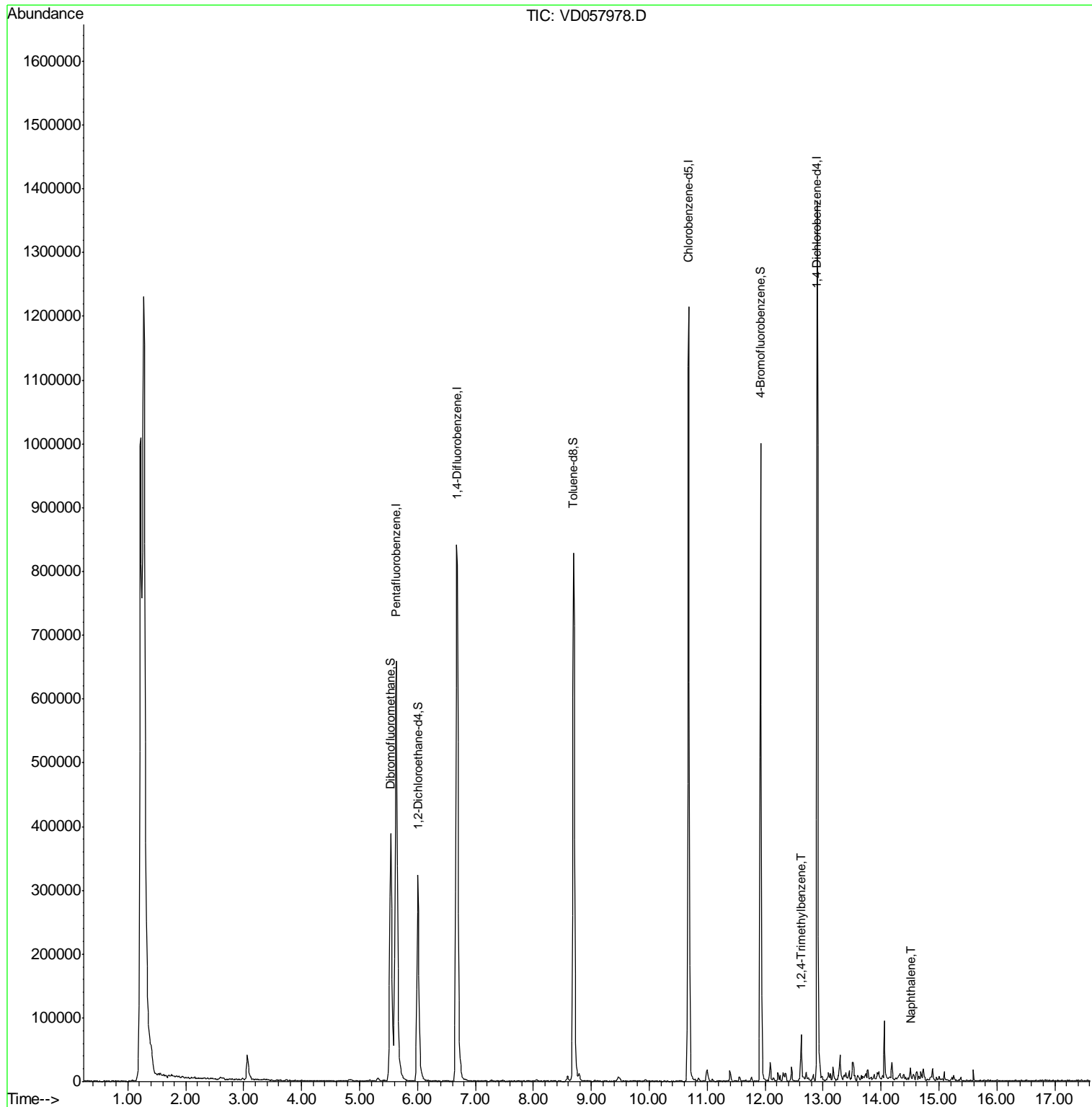
Internal Standards	R.T.	QIon	Response	Conc	Units	Dev(Min)
1) Pentafluorobenzene	5.63	168	660682	50.00	µg/l	-0.01
34) 1,4-Difluorobenzene	6.68	114	881965	50.00	µg/l	-0.02
63) Chlorobenzene-d5	10.68	117	661151	50.00	µg/l	0.00
72) 1,4-Dichlorobenzene-d4	12.90	152	290049	50.00	µg/l	-0.01
System Monitoring Compounds						
33) 1,2-Dichloroethane-d4	6.01	65	313126	47.41	µg/l	-0.01
Spiked Amount	50.000		Recovery	=	94.82%	
35) Dibromofluoromethane	5.53	113	328786	48.18	µg/l	-0.02
Spiked Amount	50.000		Recovery	=	96.36%	
50) Toluene-d8	8.69	98	640279	39.47	µg/l	-0.01
Spiked Amount	50.000		Recovery	=	78.94%	
62) 4-Bromofluorobenzene	11.92	95	263790	37.27	µg/l	0.00
Spiked Amount	50.000		Recovery	=	74.54%	
Target Compounds						
84) 1,2,4-Trimethylbenzene	12.62	105	16846	1.046	µg/l	94
95) Naphthalene	14.51	128	9597	1.025	µg/l #	93

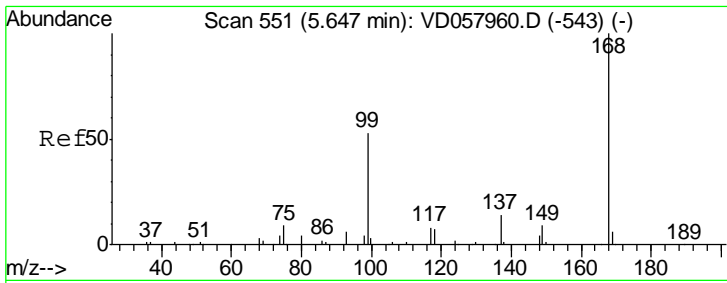
(#) = qualifier out of range (m) = manual integration (+) = signals summed

Data Path : Z:\VOASRV\HPCHEM1\MSVOA D\DATA\VD060718\  
 Data File : VD057978.D  
 Acq On : 7 Jun 2018 18:14  
 Operator : JC/SY  
 Sample : J3252-01  
 Misc : 5.30α/5ml/MSVOA D/SOIL  
 ALS Vial : 38 Sample Multiplier: 1

Instrument :  
 MSVOA\_D  
 ClientSampleId :  
 TR-04-060618

Quant Time: Jun 08 07:54:25 2018  
 Quant Method : Z:\VOASRV\HPCHEM1\MSVOA\_D\METHOD\82D060618S.M  
 Quant Title : SW846 8260  
 QLast Update : Thu Jun 07 08:57:33 2018  
 Response via : Initial Calibration

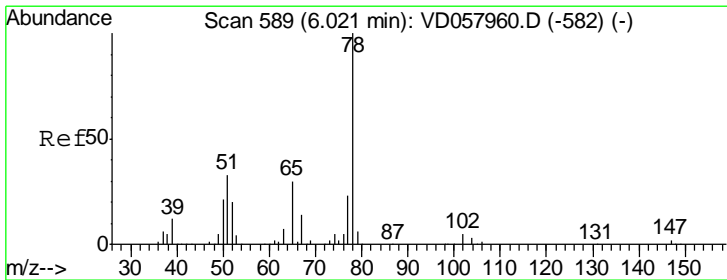
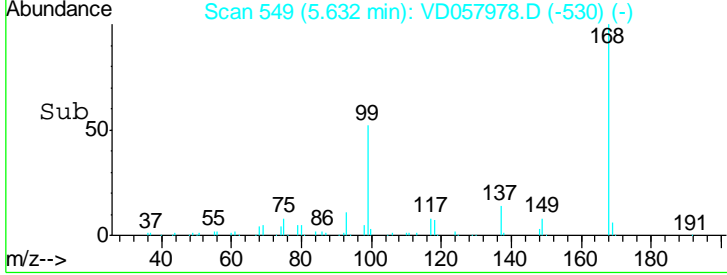
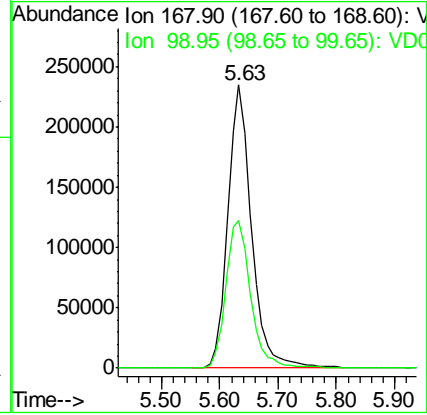
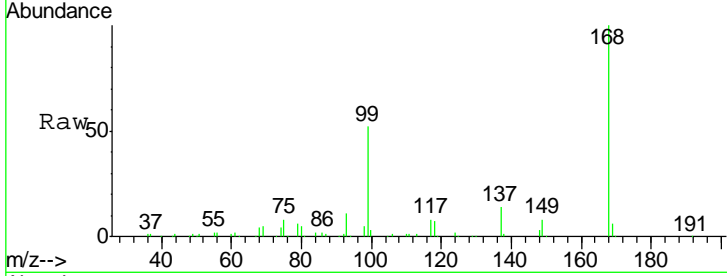




#1  
 Pentafluorobenzene  
 Concen: 50.000 ug/l  
 RT: 5.63 min Scan# 549  
 Delta R.T. -0.01 min  
 Lab File: VD057978.D  
 Acq: 7 Jun 2018 18:14

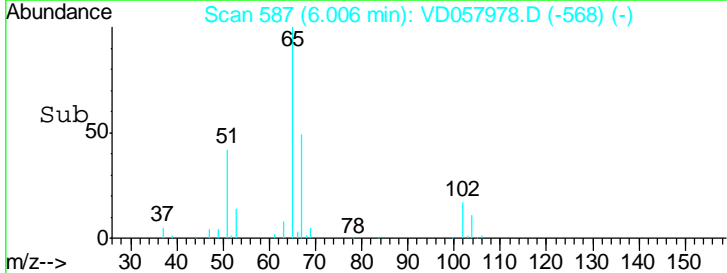
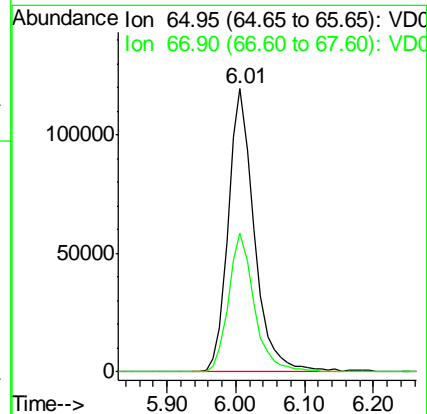
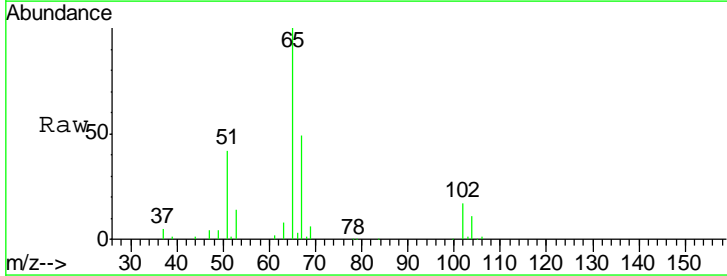
Instrument : MSVOA\_D  
 ClientSampled : TR-04-060618

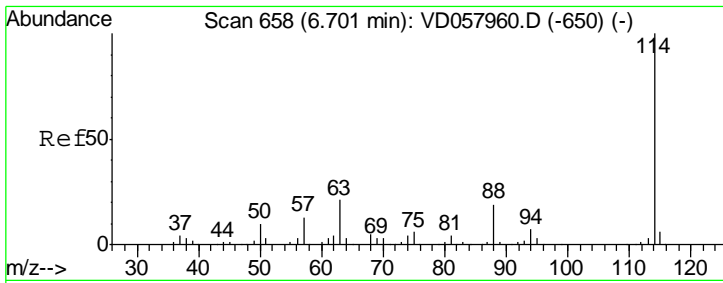
Tgt Ion	Resp	Lower	Upper
168	100		
99	52.3	46.8	70.2



#33  
 1,2-Dichloroethane-d4  
 Concen: N.D. ug/l  
 RT: 6.01 min Scan# 587  
 Delta R.T. -0.01 min  
 Lab File: VD057978.D  
 Acq: 7 Jun 2018 18:14

Tgt Ion	Resp	Lower	Upper
65	100		
67	49.2	0.0	94.0

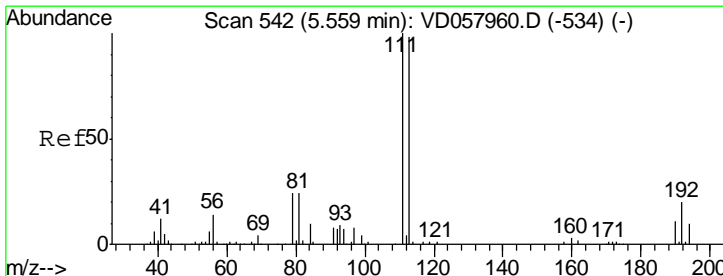
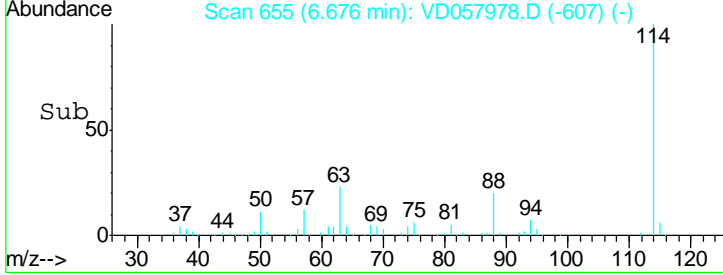
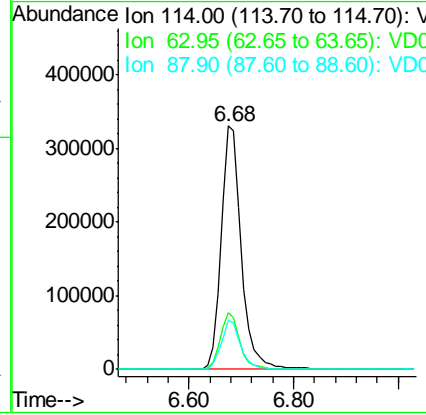
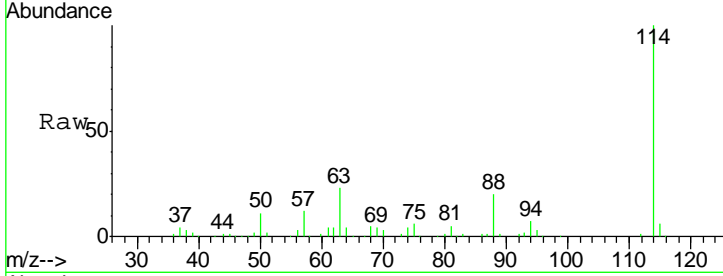




#34  
 1,4-Difluorobenzene  
 Concen: 50.000 ug/l  
 RT: 6.68 min Scan# 655  
 Delta R.T. -0.02 min  
 Lab File: VD057978.D  
 Acq: 7 Jun 2018 18:14

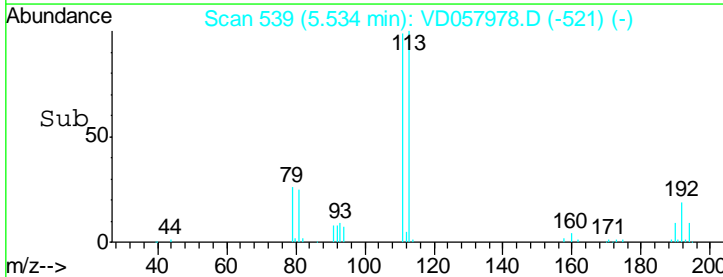
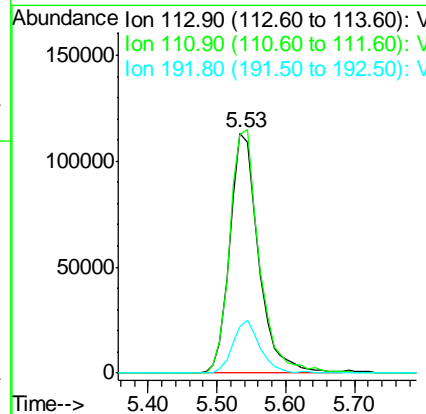
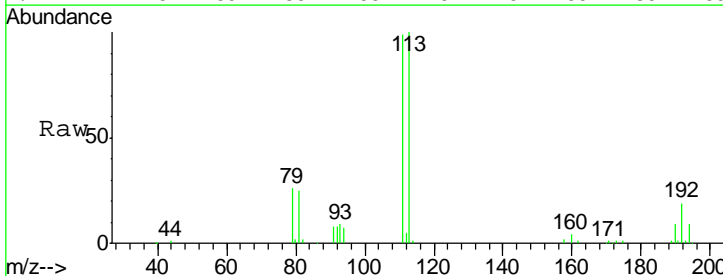
Instrument : MSVOA\_D  
 ClientSampled : TR-04-060618

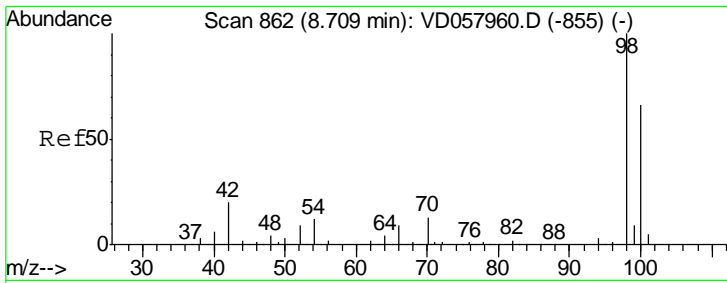
Tgt Ion	Resp	Lower	Upper
114	100		
63	23.3	0.0	42.8
88	20.4	0.0	37.8



#35  
 Dibromofluoromethane  
 Concen: 50.000 ug/l  
 RT: 5.53 min Scan# 539  
 Delta R.T. -0.02 min  
 Lab File: VD057978.D  
 Acq: 7 Jun 2018 18:14

Tgt Ion	Resp	Lower	Upper
113	100		
111	99.3	81.5	122.3
192	19.2	16.4	24.6

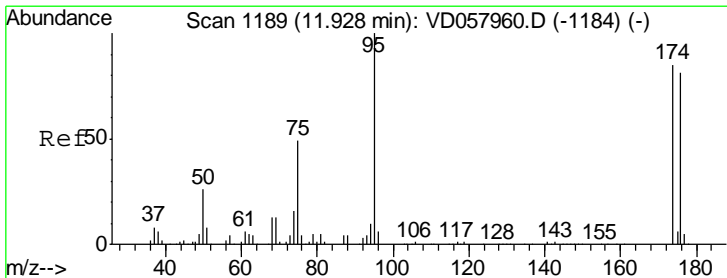
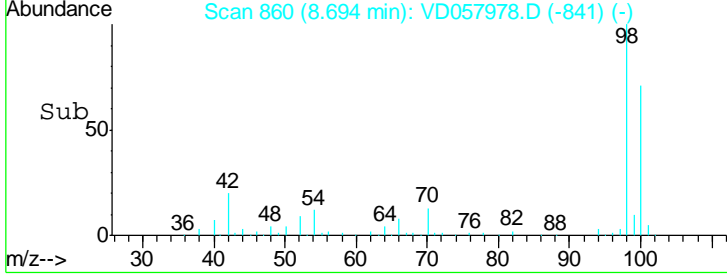
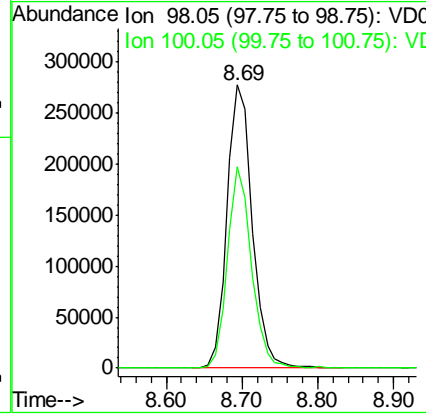
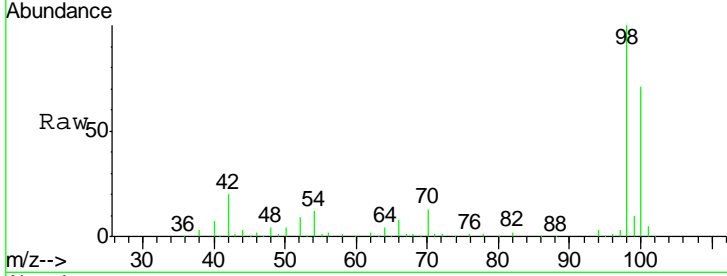




#50  
 Toluene-d8  
 Concen: N.D. ug/l  
 RT: 8.69 min Scan# 860  
 Delta R.T. -0.01 min  
 Lab File: VD057978.D  
 Acq: 7 Jun 2018 18:14

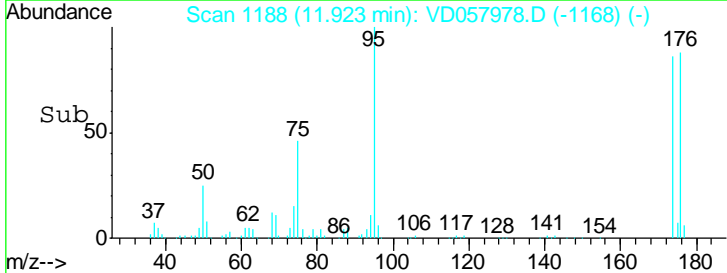
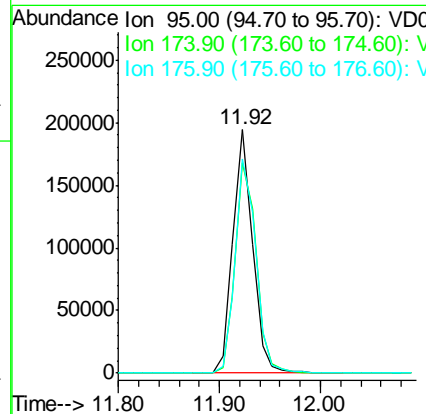
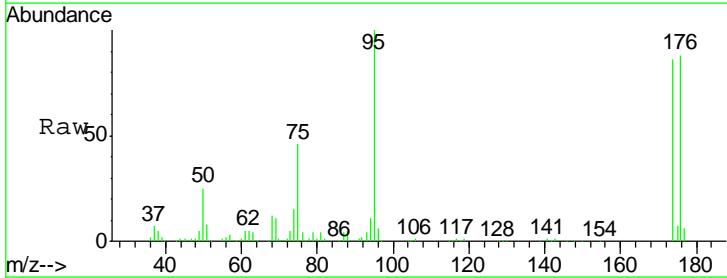
**Instrument :**  
 MSVOA\_D  
**ClientSampled :**  
 TR-04-060618

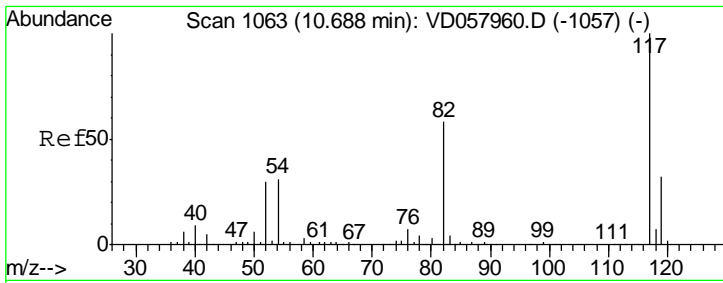
Tgt Ion: 98 Resp: 640279  
 Ion Ratio Lower Upper  
 98 100  
 100 71.1 53.4 80.0



#62  
 4-Bromofluorobenzene  
 Concen: N.D. ug/l  
 RT: 11.92 min Scan# 1188  
 Delta R.T. -0.01 min  
 Lab File: VD057978.D  
 Acq: 7 Jun 2018 18:14

Tgt Ion: 95 Resp: 263790  
 Ion Ratio Lower Upper  
 95 100  
 174 86.1 0.0 169.4  
 176 88.1 0.0 162.6

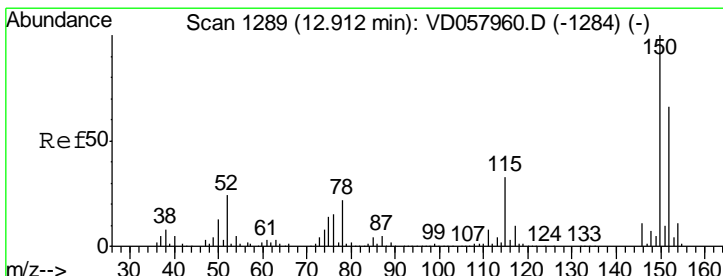
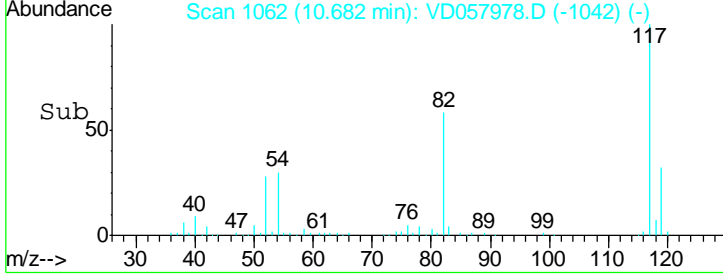
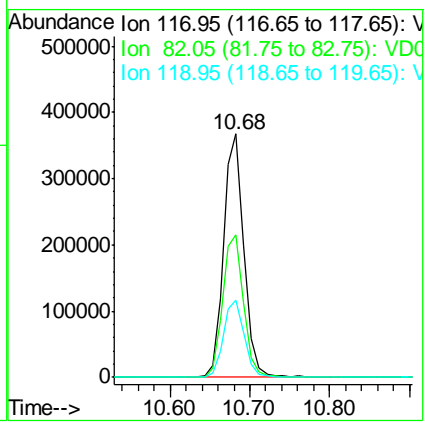
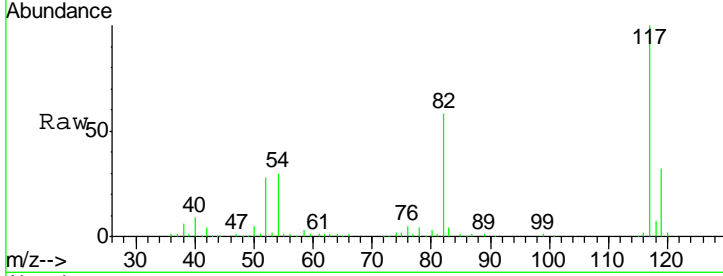




#63  
 Chlorobenzene-d5  
 Concen: 50.000 ug/l  
 RT: 10.68 min Scan# 1062  
 Delta R.T. -0.01 min  
 Lab File: VD057978.D  
 Acq: 7 Jun 2018 18:14

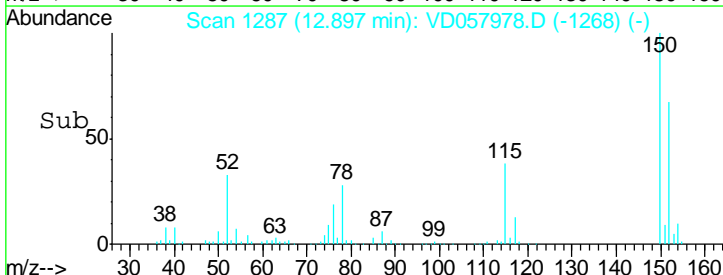
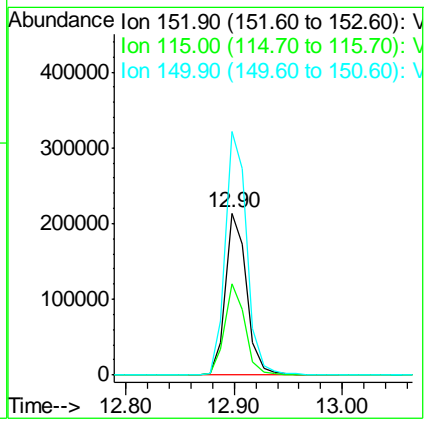
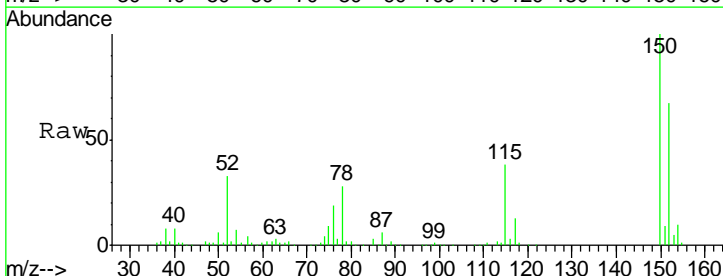
Instrument : MSVOA\_D  
 ClientSampleId : TR-04-060618

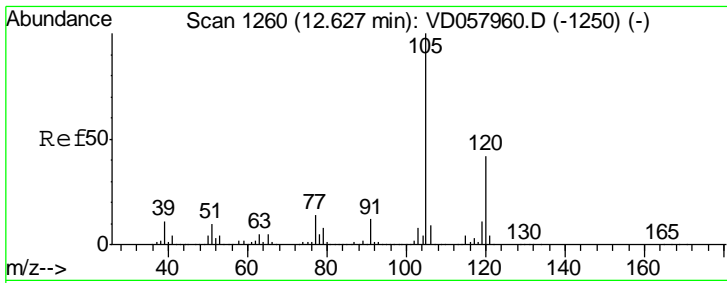
Tgt Ion	Resp	Lower	Upper
117	661151		
82	58.4	46.8	70.2
119	31.8	25.8	38.6



#72  
 1,4-Dichlorobenzene-d4  
 Concen: 50.000 ug/l  
 RT: 12.90 min Scan# 1287  
 Delta R.T. -0.01 min  
 Lab File: VD057978.D  
 Acq: 7 Jun 2018 18:14

Tgt Ion	Resp	Lower	Upper
152	290049		
115	56.5	25.6	76.6
150	150.1	0.0	306.8

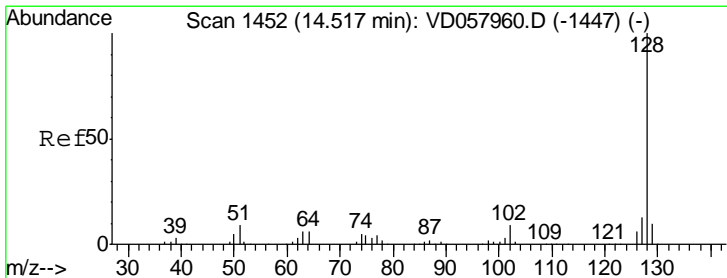
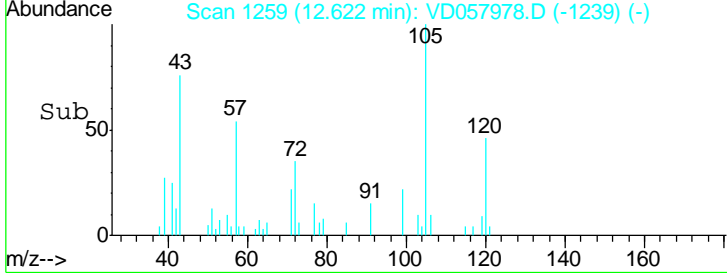
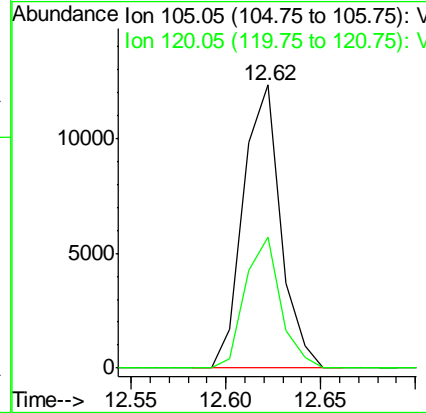
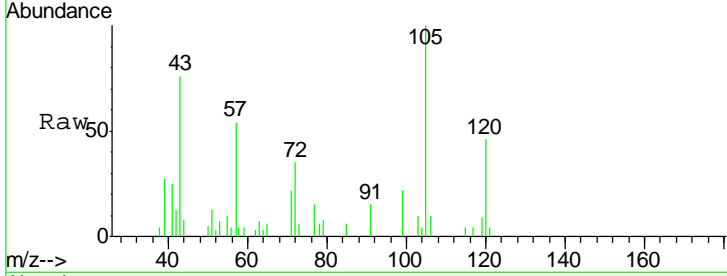




#84  
 1,2,4-Trimethylbenzene  
 Concen: 1.046 ug/l  
 RT: 12.62 min Scan# 1259  
 Delta R.T. -0.01 min  
 Lab File: VD057978.D  
 Acq: 7 Jun 2018 18:14

Instrument :  
 MSVOA\_D  
 ClientSampleId :  
 TR-04-060618

Tgt Ion:105 Resp: 16846  
 Ion Ratio Lower Upper  
 105 100  
 120 46.2 21.2 63.6



#95  
 Naphthalene  
 Concen: 1.025 ug/l  
 RT: 14.51 min Scan# 1451  
 Delta R.T. -0.01 min  
 Lab File: VD057978.D  
 Acq: 7 Jun 2018 18:14

Tgt Ion:128 Resp: 9597  
 Ion Ratio Lower Upper  
 128 100  
 127 12.3 10.2 15.2  
 129 15.8 8.2 12.2#

