

Data Path : Z:\VOASRV\HPCHEM1\MSVOA D\DATA\VD060818\
 Data File : VD058021.D
 Acq On : 8 Jun 2018 16:45
 Operator : VA/AP
 Sample : J2688-03RE
 Misc : 6.43µ/5ml/MSVOA D/SOIL
 ALS Vial : 36 Sample Multiplier: 1

Instrument :
 MSVOA_D
 ClientSampleID :

Quant Time: Jun 08 23:56:38 2018
 Quant Method : Z:\VOASRV\HPCHEM1\MSVOA_D\METHOD\82D060618S.M
 Quant Title : SW846 8260
 QLast Update : Thu Jun 07 08:57:33 2018
 Response via : Initial Calibration

Internal Standards	R.T.	QIon	Response	Conc	Units	Dev(Min)
1) Pentafluorobenzene	5.64	168	751164	50.00	µg/l	0.00
34) 1,4-Difluorobenzene	6.68	114	993559	50.00	µg/l	-0.02
63) Chlorobenzene-d5	10.68	117	767524	50.00	µg/l	0.00
72) 1,4-Dichlorobenzene-d4	12.90	152	374718	50.00	µg/l	0.00

System Monitoring Compounds

33) 1,2-Dichloroethane-d4	6.00	65	428946	57.12	µg/l	-0.02
Spiked Amount	50.000		Recovery	=	114.24%	
35) Dibromofluoromethane	5.54	113	456447	59.38	µg/l	-0.02
Spiked Amount	50.000		Recovery	=	118.76%	
50) Toluene-d8	8.70	98	1029514	56.33	µg/l	0.00
Spiked Amount	50.000		Recovery	=	112.66%	
62) 4-Bromofluorobenzene	11.92	95	426469	53.49	µg/l	0.00
Spiked Amount	50.000		Recovery	=	106.98%	

Target Compounds

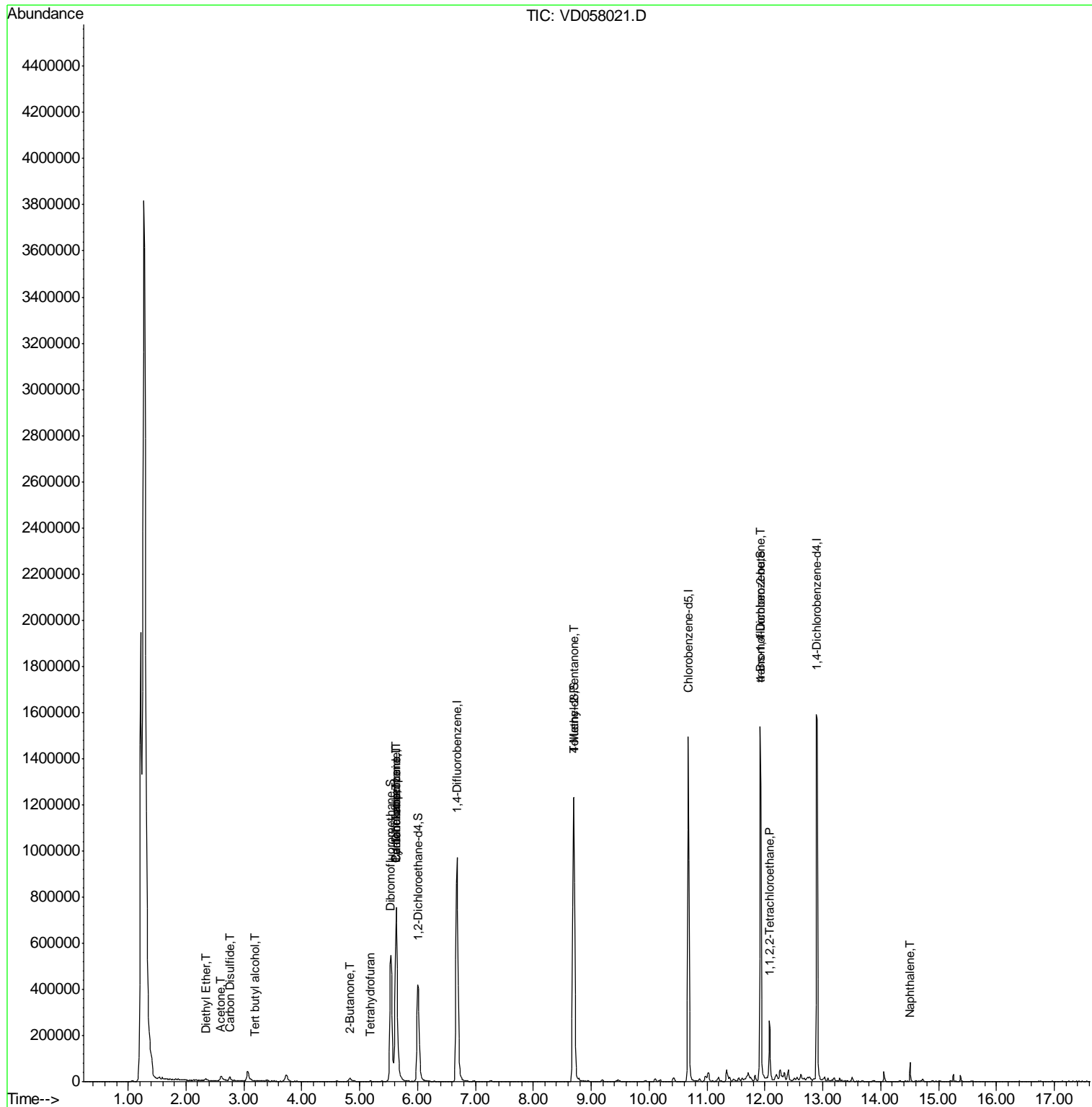
					Qvalue	
8) Diethyl Ether	2.35	74	3262	2.673	µg/l	47
11) Tert butyl alcohol	3.20	59	274	1.362	µg/l #	74
16) Acetone	2.61	43	46037	42.550	µg/l	95
17) Carbon Disulfide	2.75	76	28588	2.619	µg/l	98
20) Methylene Chloride	3.07	84	19422	Below Cal		91
25) 2-Butanone	4.83	43	12424	5.053	µg/l	97
29) Tetrahydrofuran	5.19	42	1588	1.232	µg/l #	39
31) Cyclohexane	5.63	56	18439	1.412	µg/l #	1
36) 1,1-Dichloropropene	5.63	75	63241	5.777	µg/l #	53
38) Carbon Tetrachloride	5.63	117	62567	5.800	µg/l #	15
51) 4-Methyl-2-Pentanone	8.69	43	8060	1.606	µg/l #	1
75) 1,1,2,2-Tetrachloroethane	12.08	83	13988	2.585	µg/l #	31
81) trans-1,4-Dichloro-2-buten	11.92	75	197412	141.598	µg/l #	6
82) 4-Chlorotoluene	12.32	91	1973	Below Cal		91
89) n-Butylbenzene	13.19	91	1877	Below Cal	#	59
95) Naphthalene	14.51	128	42110	3.481	µg/l	98

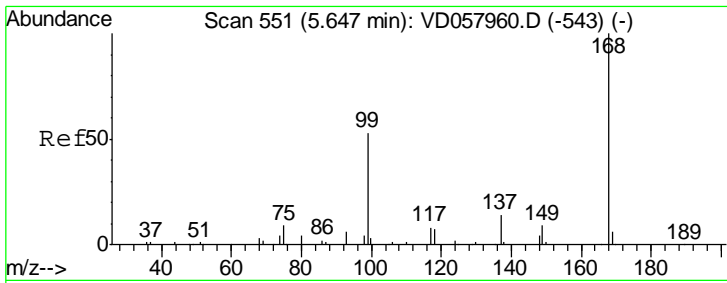
(#) = qualifier out of range (m) = manual integration (+) = signals summed

Data Path : Z:\VOASRV\HPCHEM1\MSVOA D\DATA\VD060818\
 Data File : VD058021.D
 Acq On : 8 Jun 2018 16:45
 Operator : VA/AP
 Sample : J2688-03RE
 Misc : 6.43µ/5ml/MSVOA D/SOIL
 ALS Vial : 36 Sample Multiplier: 1

Instrument :
 MSVOA_D
 ClientSampleId :

Quant Time: Jun 08 23:56:38 2018
 Quant Method : Z:\VOASRV\HPCHEM1\MSVOA_D\METHOD\82D060618S.M
 Quant Title : SW846 8260
 QLast Update : Thu Jun 07 08:57:33 2018
 Response via : Initial Calibration

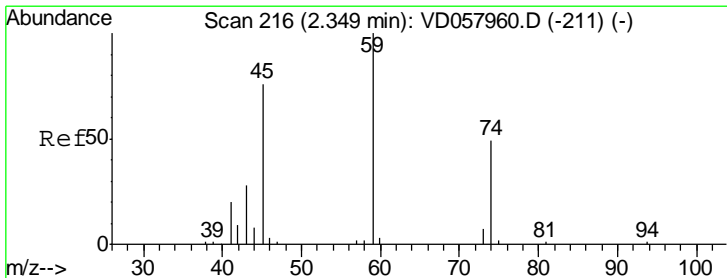
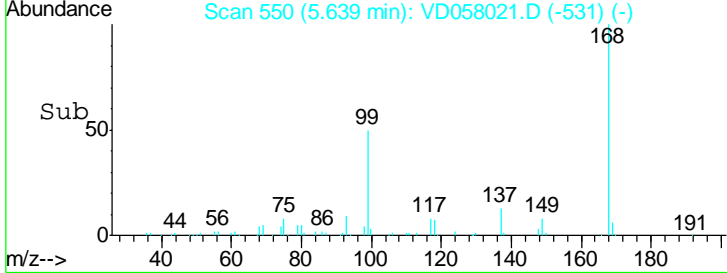
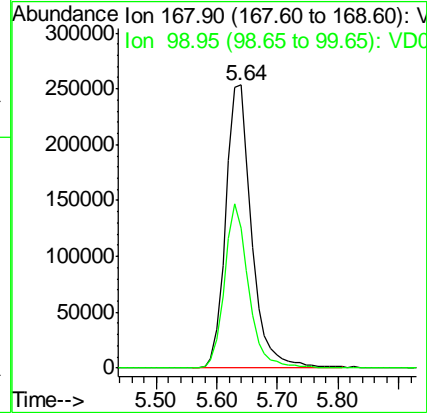
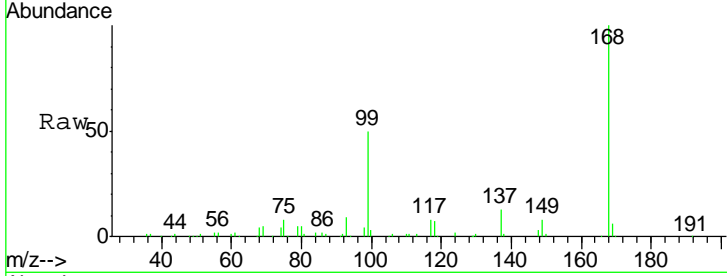




#1
 Pentafluorobenzene
 Concen: 50.000 ug/l
 RT: 5.64 min Scan# 550
 Delta R.T. -0.01 min
 Lab File: VD058021.D
 Acq: 8 Jun 2018 16:45

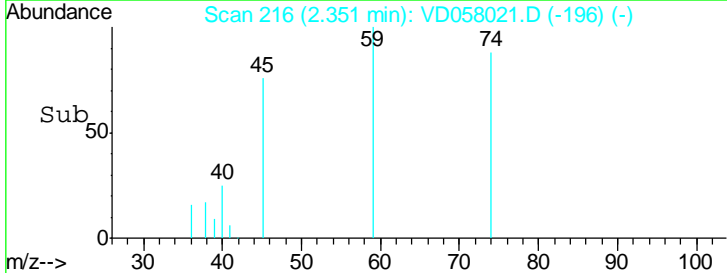
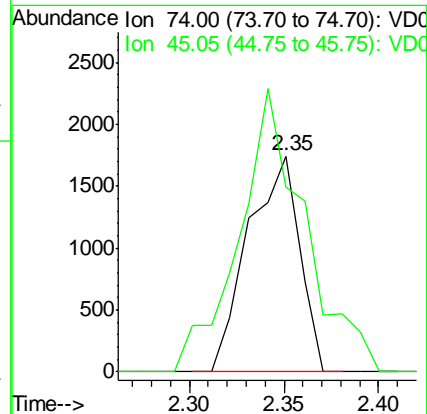
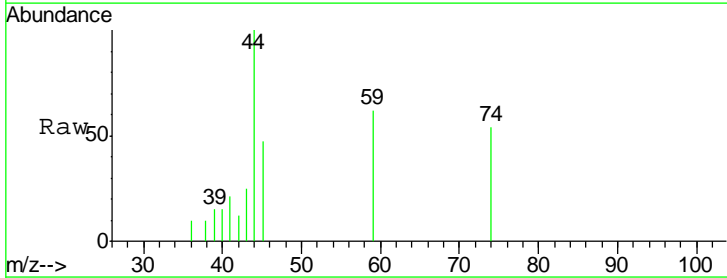
Instrument :
 MSVOA_D
 ClientSampled :

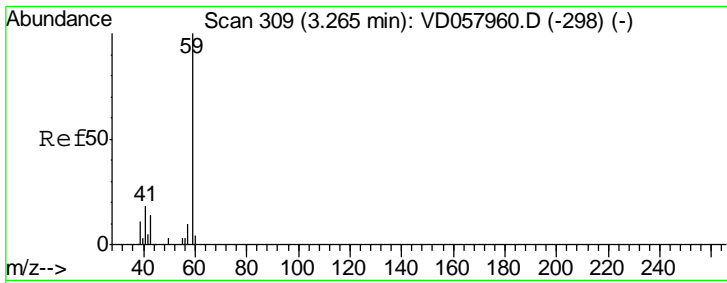
Tgt Ion	Resp	Lower	Upper
168	100		
99	49.6	46.8	70.2



#8
 Diethyl Ether
 Concen: 2.673 ug/l
 RT: 2.35 min Scan# 216
 Delta R.T. 0.00 min
 Lab File: VD058021.D
 Acq: 8 Jun 2018 16:45

Tgt Ion	Resp	Lower	Upper
74	100		
45	85.7	77.1	231.3

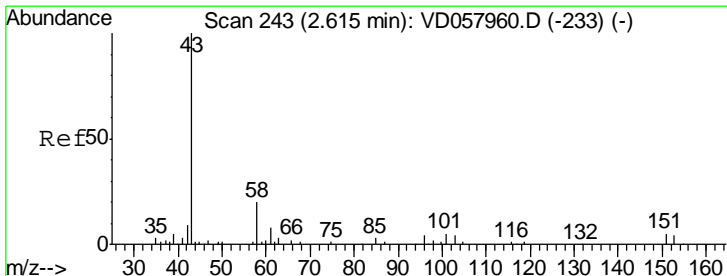
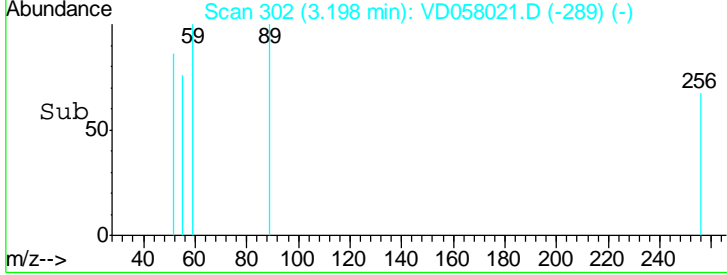
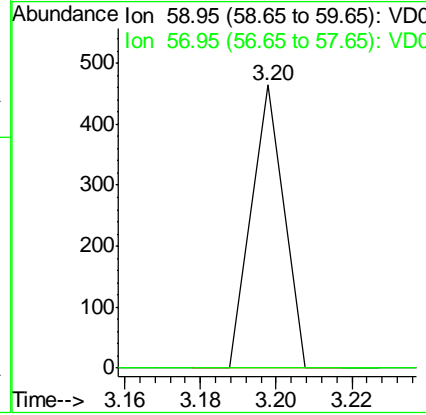
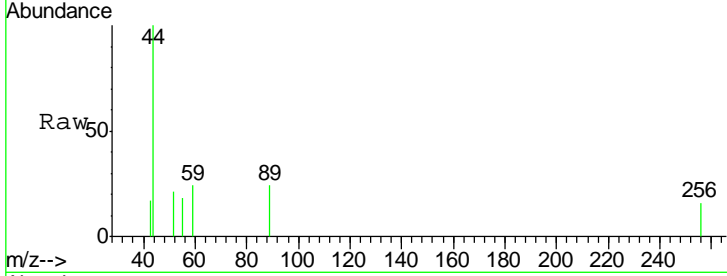




#11
 Tert butyl alcohol
 Concen: 1.362 ug/l
 RT: 3.20 min Scan# 302
 Delta R.T. -0.07 min
 Lab File: VD058021.D
 Acq: 8 Jun 2018 16:45

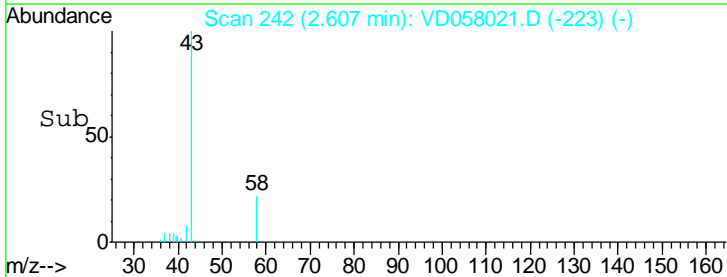
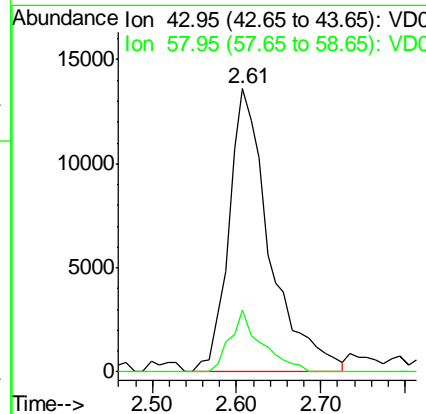
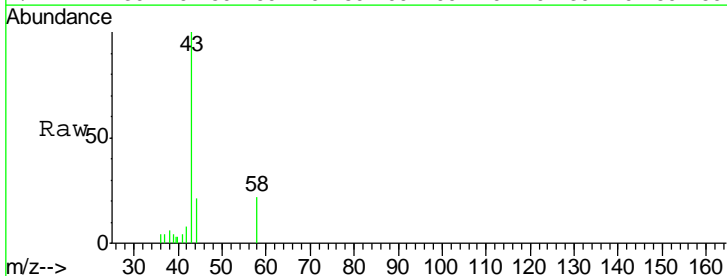
Instrument :
 MSVOA_D
 ClientSampled :

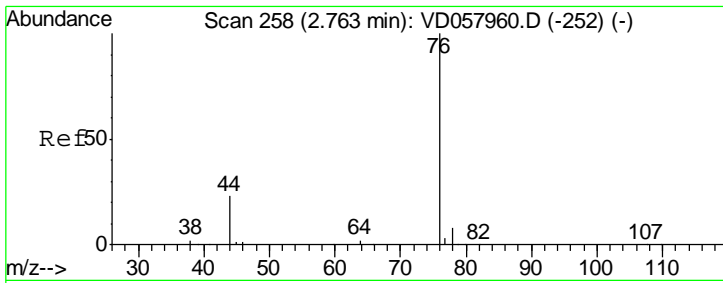
Tgt Ion	Resp	Lower	Upper
59	100		
57	0.0	7.8	11.6#



#16
 Acetone
 Concen: 42.550 ug/l
 RT: 2.61 min Scan# 242
 Delta R.T. -0.01 min
 Lab File: VD058021.D
 Acq: 8 Jun 2018 16:45

Tgt Ion	Resp	Lower	Upper
43	100		
58	21.9	15.8	23.8

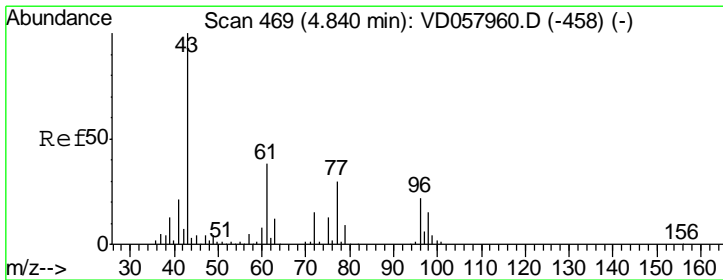
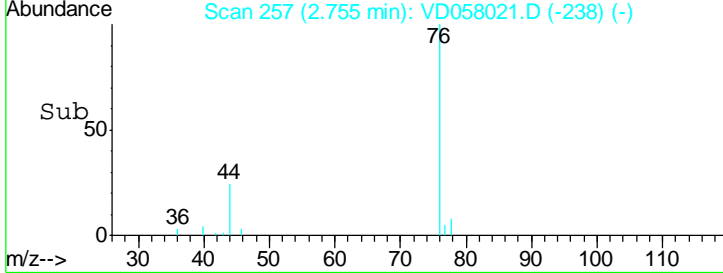
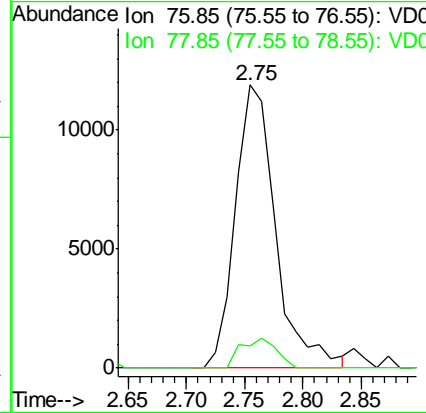
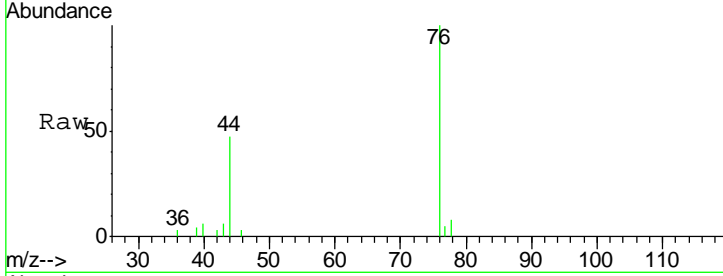




#17
 Carbon Disulfide
 Concen: 2.619 ug/l
 RT: 2.75 min Scan# 257
 Delta R.T. -0.01 min
 Lab File: VD058021.D
 Acq: 8 Jun 2018 16:45

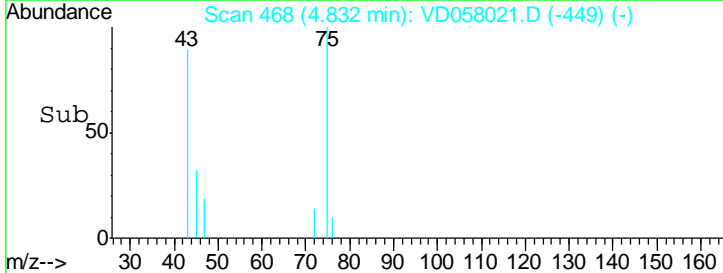
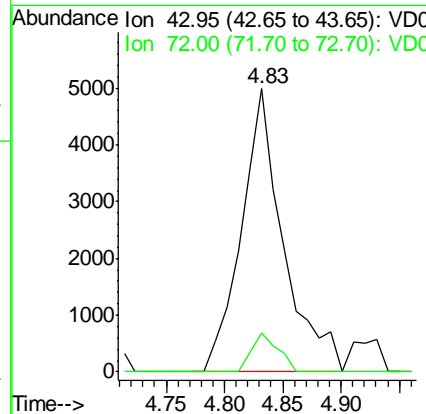
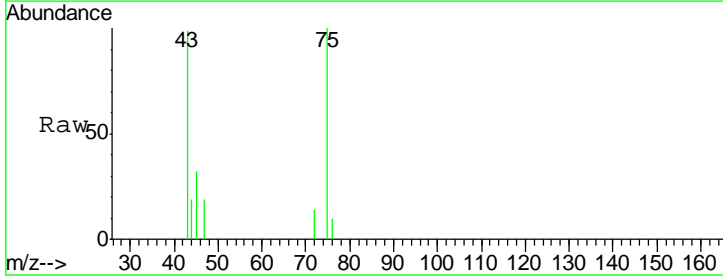
Instrument : MSVOA_D
 ClientSampled :

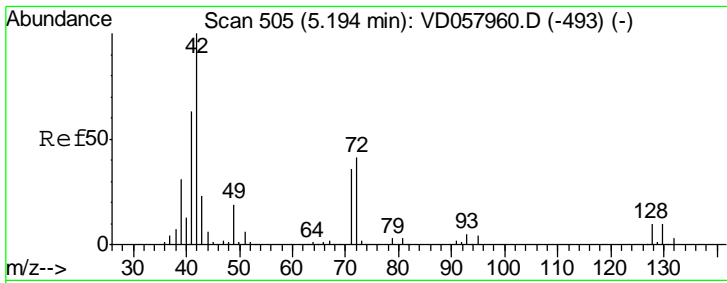
Tgt Ion	Resp	Lower	Upper
76	100		
78	7.9	6.7	10.1



#25
 2-Butanone
 Concen: 5.053 ug/l
 RT: 4.83 min Scan# 468
 Delta R.T. -0.01 min
 Lab File: VD058021.D
 Acq: 8 Jun 2018 16:45

Tgt Ion	Resp	Lower	Upper
43	100		
72	13.9	12.0	18.0

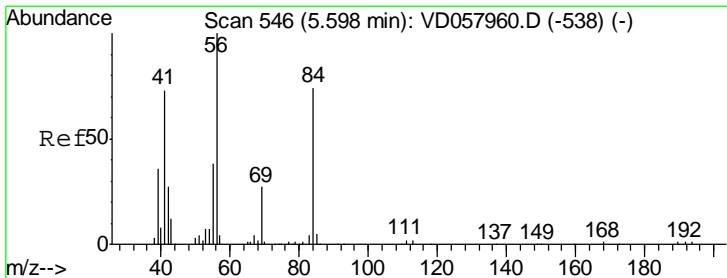
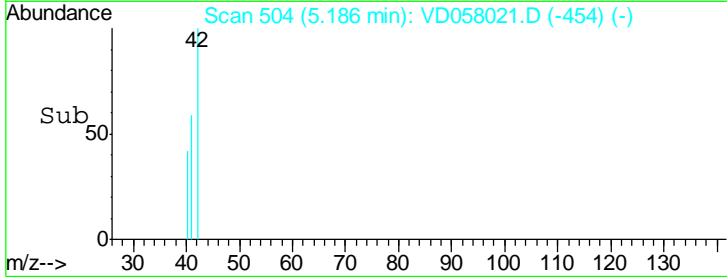
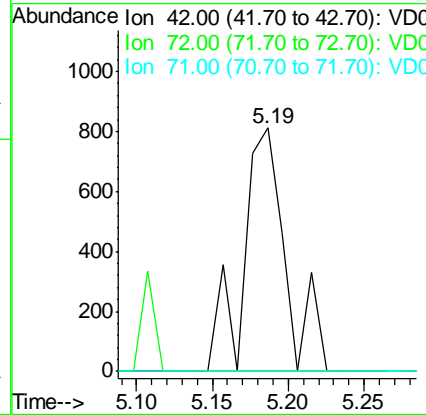
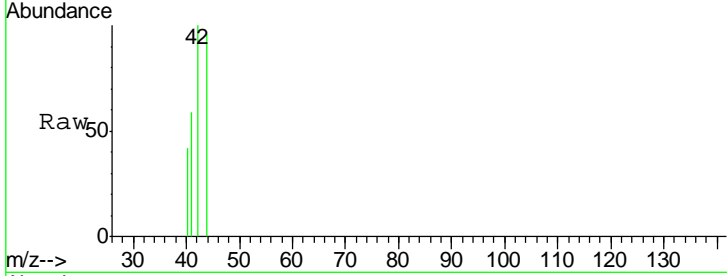




#29
 Tetrahydrofuran
 Concen: 1.232 ug/l
 RT: 5.19 min Scan# 504
 Delta R.T. -0.01 min
 Lab File: VD058021.D
 Acq: 8 Jun 2018 16:45

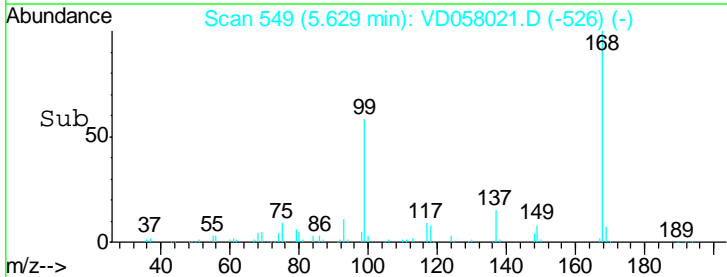
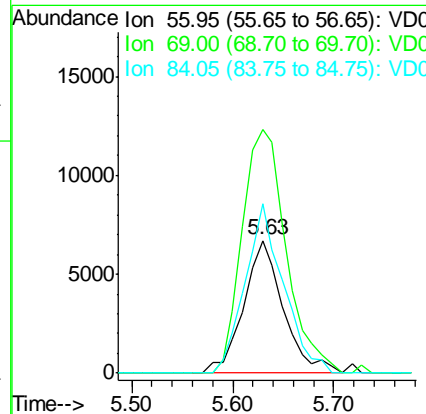
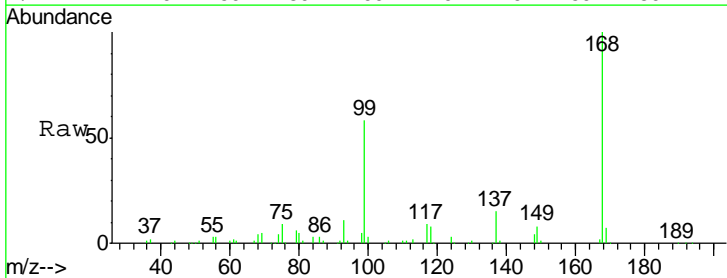
Instrument :
 MSVOA_D
 ClientSampled :

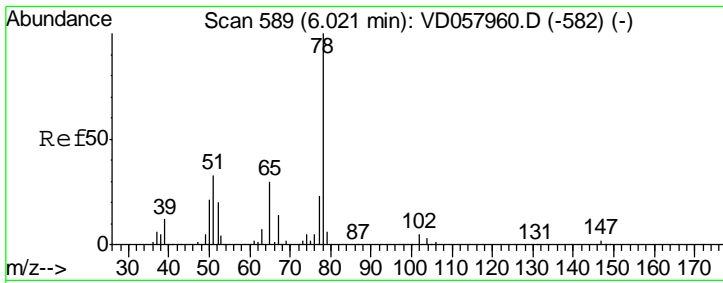
Tgt Ion	Resp	Lower	Upper
42	1588		
72	0.0	28.5	42.7#
71	0.0	27.9	41.9#



#31
 Cyclohexane
 Concen: 1.412 ug/l
 RT: 5.63 min Scan# 549
 Delta R.T. 0.03 min
 Lab File: VD058021.D
 Acq: 8 Jun 2018 16:45

Tgt Ion	Resp	Lower	Upper
56	18439		
69	184.1	21.5	32.3#
84	127.8	61.0	91.6#

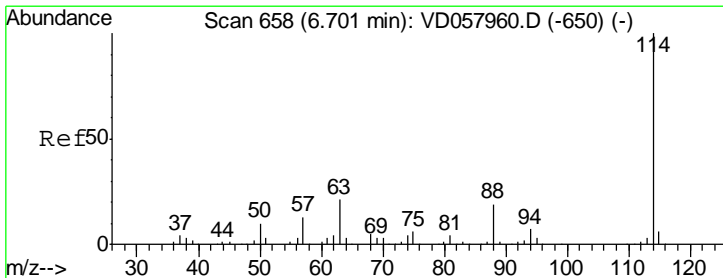
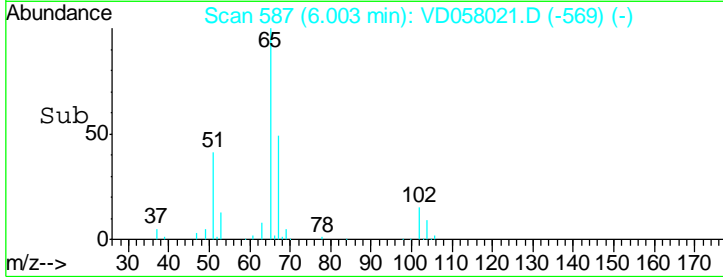
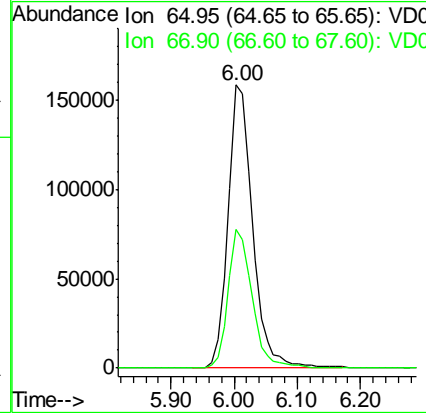
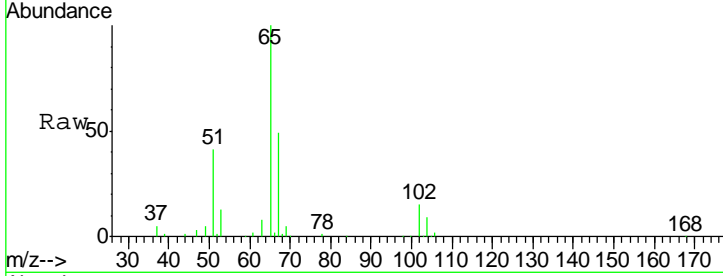




#33
 1,2-Dichloroethane-d4
 Concen: Below ug/l
 RT: 6.00 min Scan# 587
 Delta R.T. -0.02 min
 Lab File: VD058021.D
 Acq: 8 Jun 2018 16:45

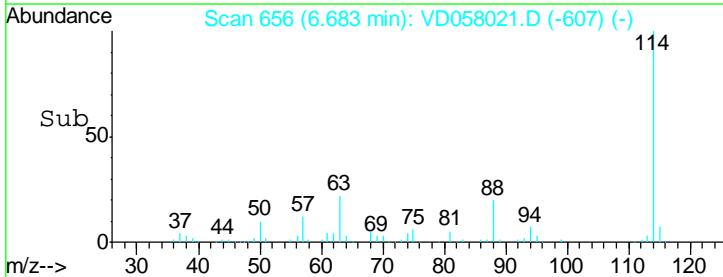
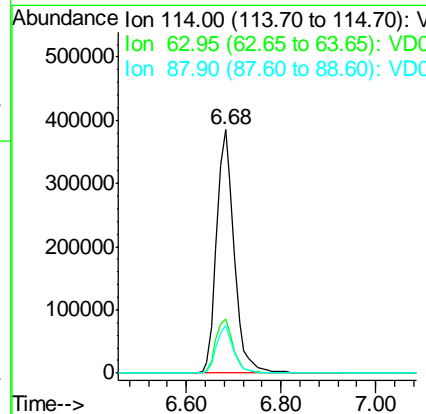
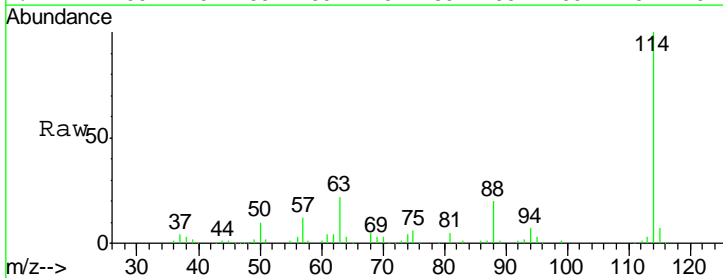
Instrument :
 MSVOA_D
 ClientSampled :

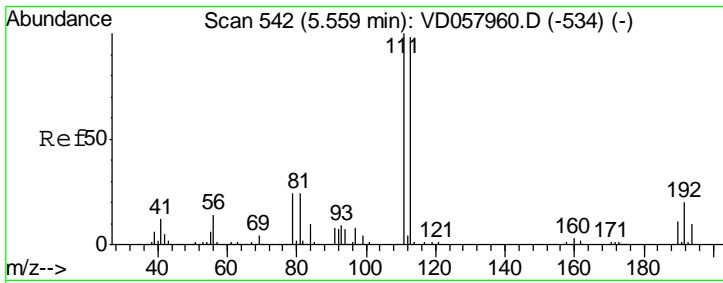
Tgt Ion	Resp	Lower	Upper
65	100		
67	49.2	0.0	94.0



#34
 1,4-Difluorobenzene
 Concen: 50.000 ug/l
 RT: 6.68 min Scan# 656
 Delta R.T. -0.02 min
 Lab File: VD058021.D
 Acq: 8 Jun 2018 16:45

Tgt Ion	Resp	Lower	Upper
114	100		
63	22.4	0.0	42.8
88	19.7	0.0	37.8

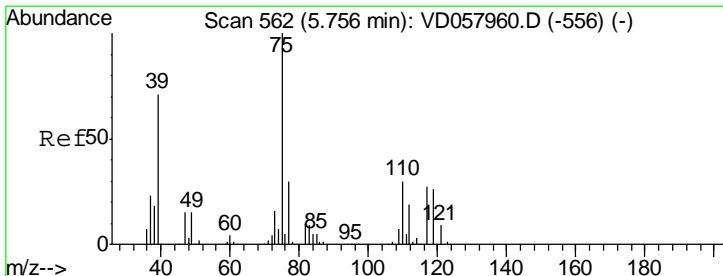
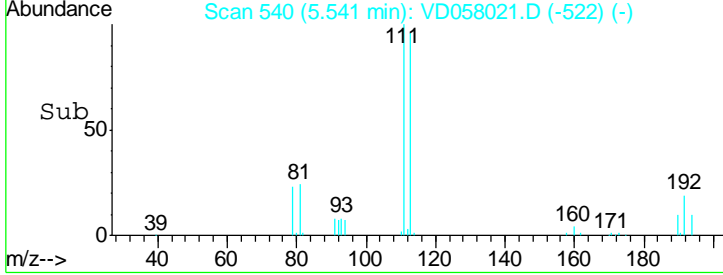
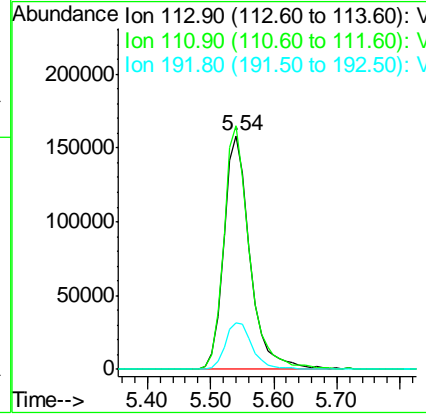
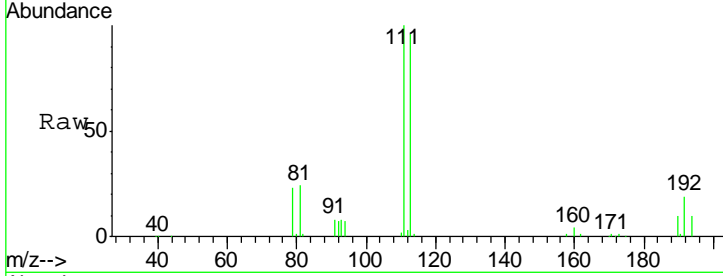




#35
 Dibromofluoromethane
 Concen: 50.000 ug/l
 RT: 5.54 min Scan# 540
 Delta R.T. -0.02 min
 Lab File: VD058021.D
 Acq: 8 Jun 2018 16:45

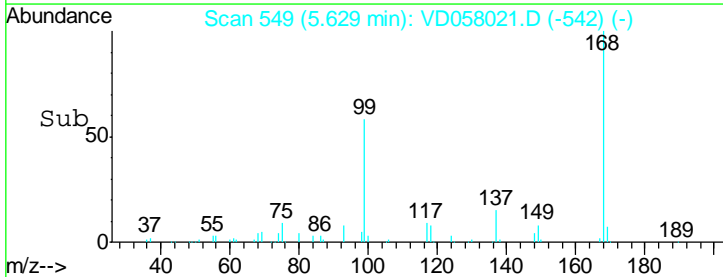
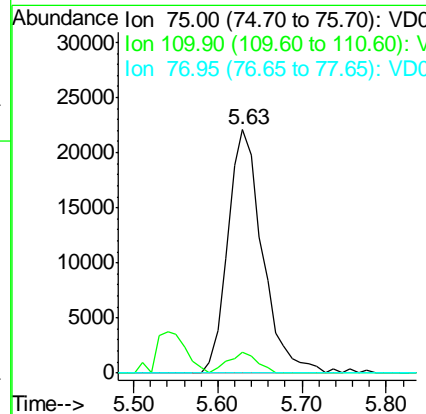
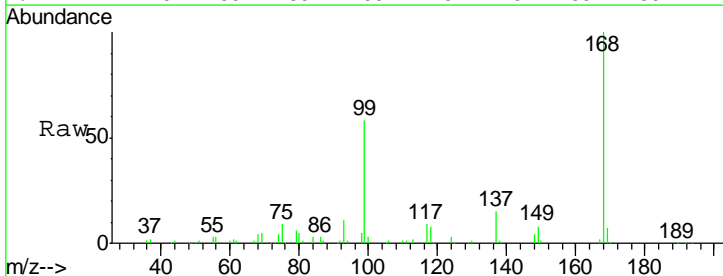
Instrument :
 MSVOA_D
 ClientSampled :

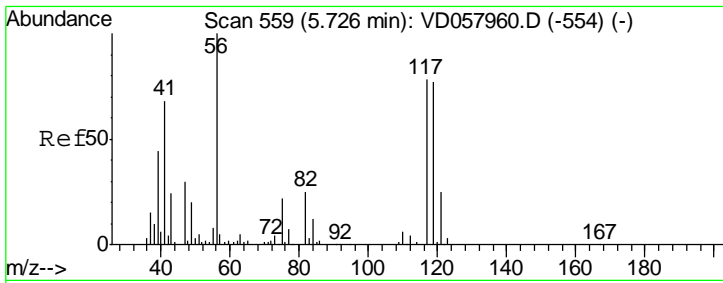
Tgt Ion	Resp	Lower	Upper
113	456447		
111	104.1	81.5	122.3
192	20.0	16.4	24.6



#36
 1,1-Dichloropropene
 Concen: 5.777 ug/l
 RT: 5.63 min Scan# 549
 Delta R.T. -0.13 min
 Lab File: VD058021.D
 Acq: 8 Jun 2018 16:45

Tgt Ion	Resp	Lower	Upper
75	63241		
110	8.7	14.8	44.3#
77	0.0	23.9	35.9#

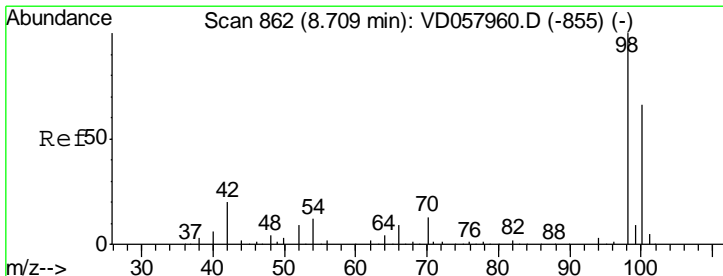
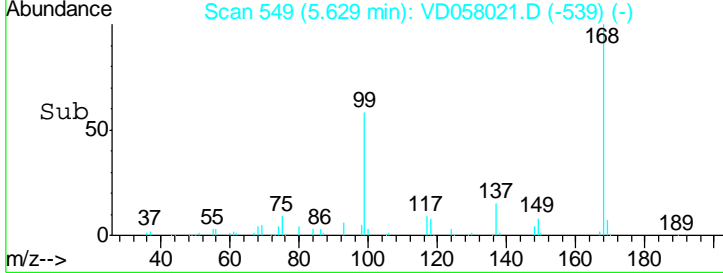
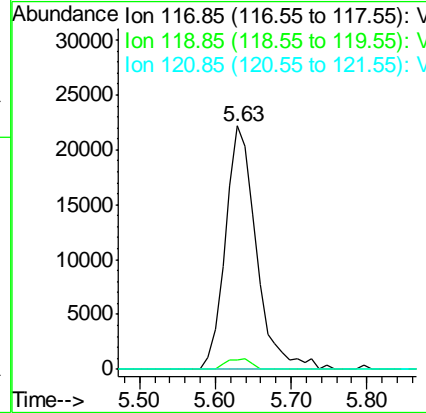
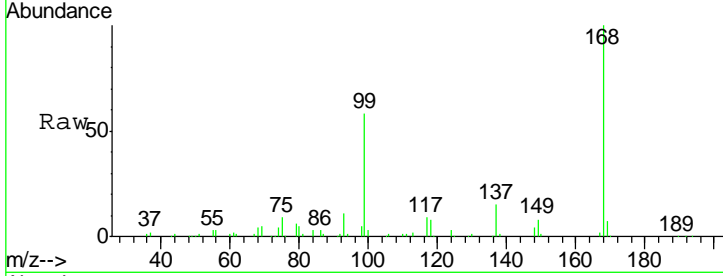




#38
 Carbon Tetrachloride
 Concen: 5.800 ug/l
 RT: 5.63 min Scan# 549
 Delta R.T. -0.10 min
 Lab File: VD058021.D
 Acq: 8 Jun 2018 16:45

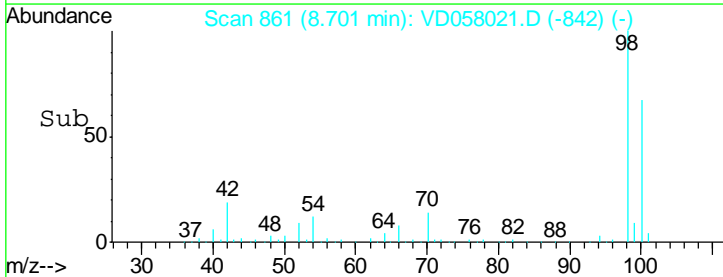
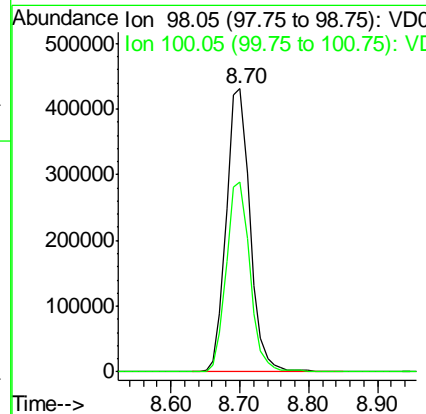
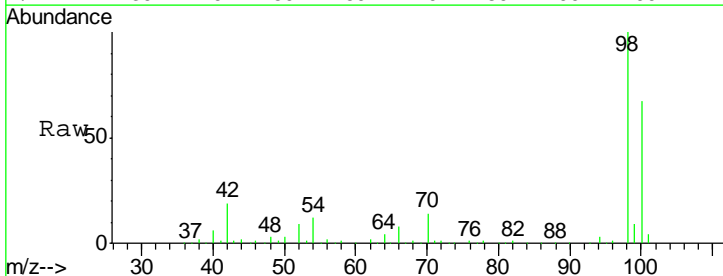
Instrument :
 MSVOA_D
 ClientSampled :

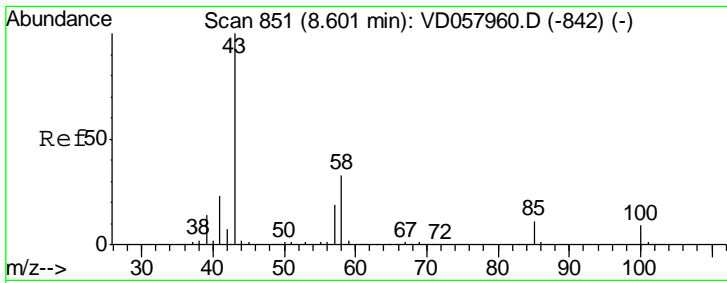
Tgt Ion	Resp	Lower	Upper
117	100		
119	4.0	76.1	114.1#
121	0.0	24.9	37.3#



#50
 Toluene-d8
 Concen: N.D. ug/l
 RT: 8.70 min Scan# 861
 Delta R.T. -0.01 min
 Lab File: VD058021.D
 Acq: 8 Jun 2018 16:45

Tgt Ion	Resp	Lower	Upper
98	100		
100	67.0	53.4	80.0

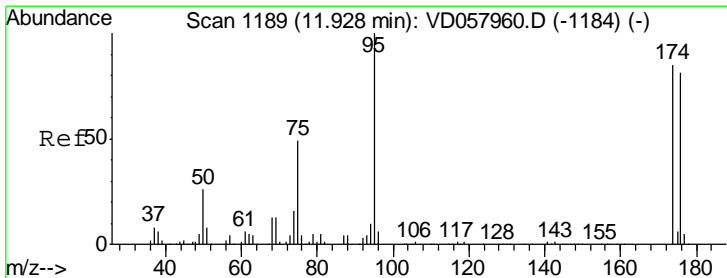
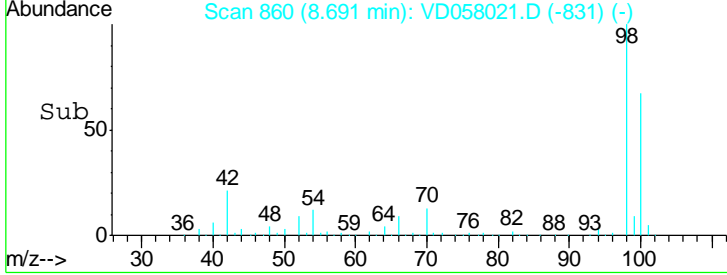
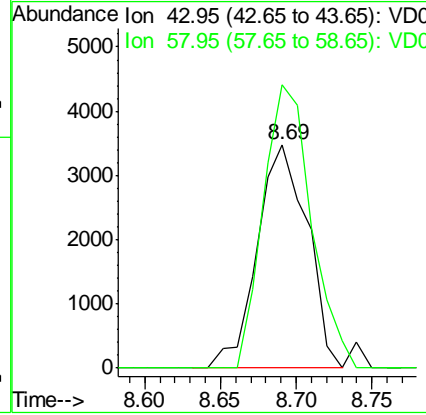
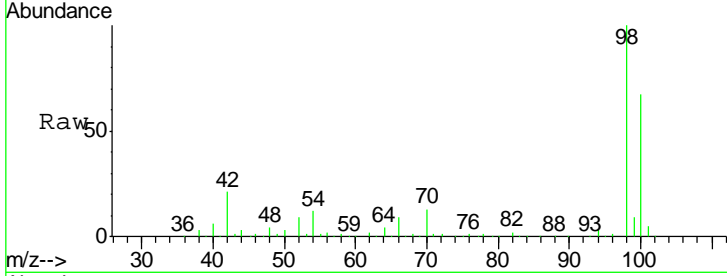




#51
 4-Methyl-2-Pentanone
 Concen: 1.606 ug/l
 RT: 8.69 min Scan# 860
 Delta R.T. 0.09 min
 Lab File: VD058021.D
 Acq: 8 Jun 2018 16:45

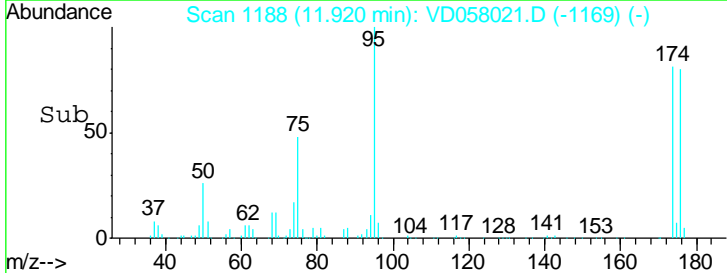
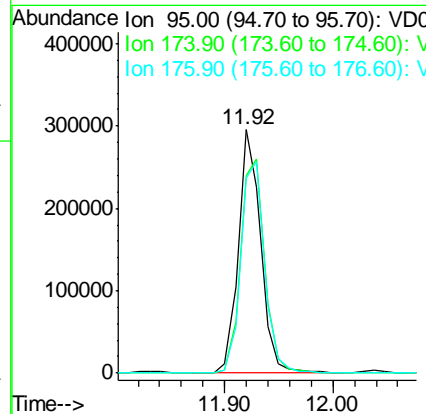
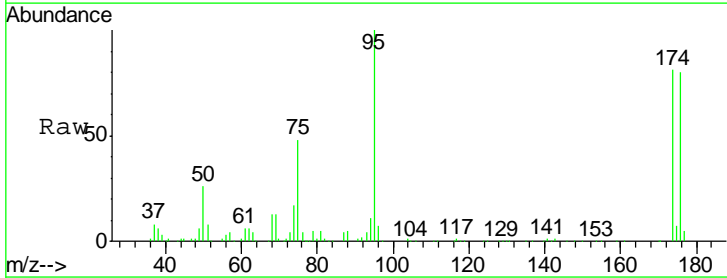
Instrument :
 MSVOA_D
 ClientSampled :

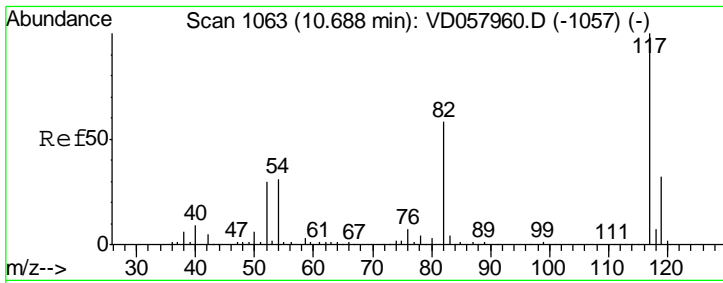
Tgt Ion: 43 Resp: 8060
 Ion Ratio Lower Upper
 43 100
 58 126.6 26.2 39.4#



#62
 4-Bromofluorobenzene
 Concen: N.D. ug/l
 RT: 11.92 min Scan# 1188
 Delta R.T. -0.01 min
 Lab File: VD058021.D
 Acq: 8 Jun 2018 16:45

Tgt Ion: 95 Resp: 426469
 Ion Ratio Lower Upper
 95 100
 174 81.1 0.0 169.4
 176 79.9 0.0 162.6

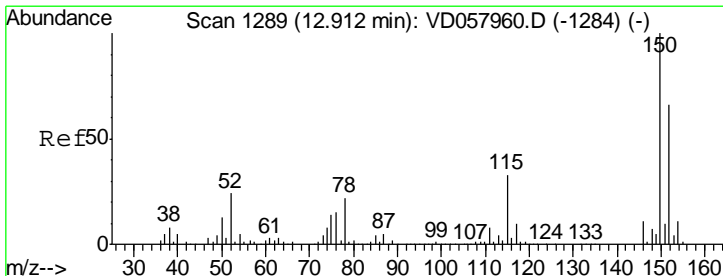
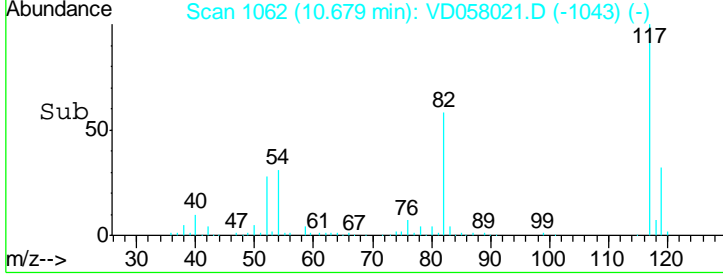
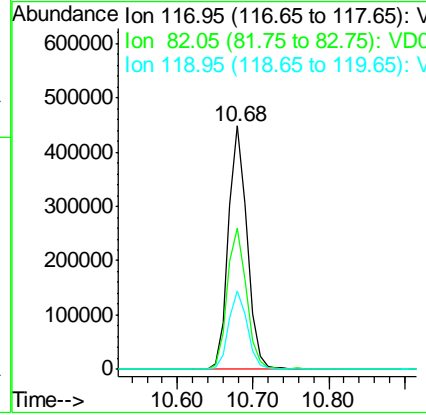
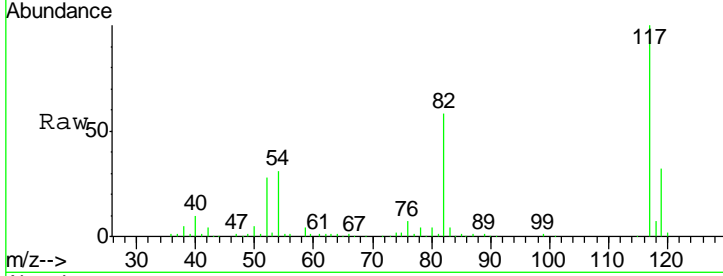




#63
 Chlorobenzene-d5
 Concen: 50.000 ug/l
 RT: 10.68 min Scan# 1062
 Delta R.T. -0.01 min
 Lab File: VD058021.D
 Acq: 8 Jun 2018 16:45

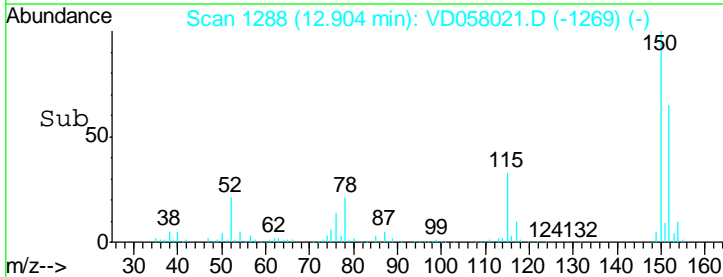
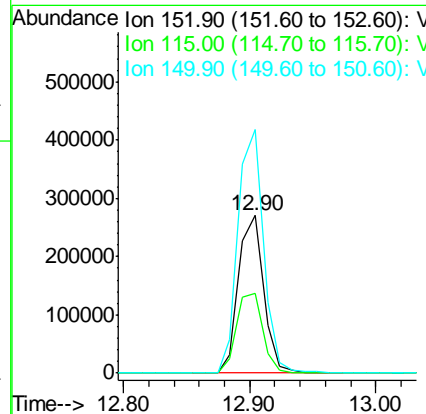
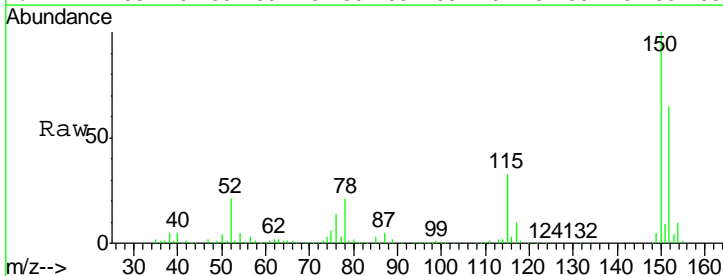
Instrument :
 MSVOA_D
 ClientSampled :

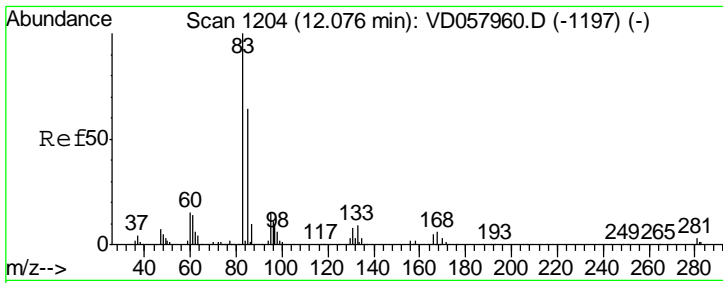
Tgt Ion	Resp	Lower	Upper
117	767524		
82	57.8	46.8	70.2
119	32.2	25.8	38.6



#72
 1,4-Dichlorobenzene-d4
 Concen: 50.000 ug/l
 RT: 12.90 min Scan# 1288
 Delta R.T. -0.01 min
 Lab File: VD058021.D
 Acq: 8 Jun 2018 16:45

Tgt Ion	Resp	Lower	Upper
152	374718		
115	50.2	25.6	76.6
150	154.3	0.0	306.8

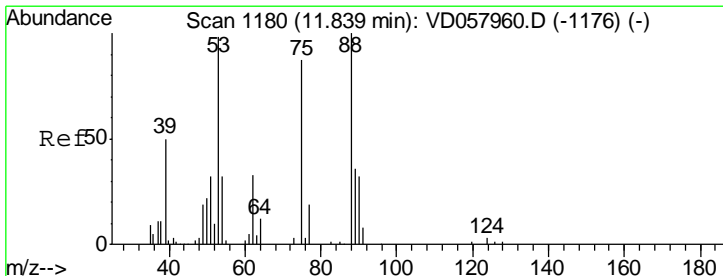
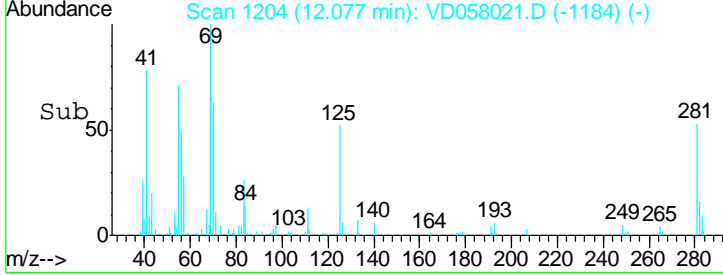
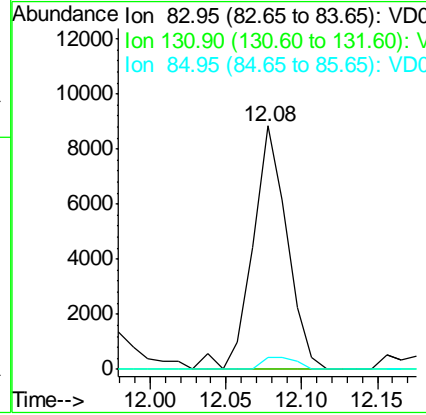
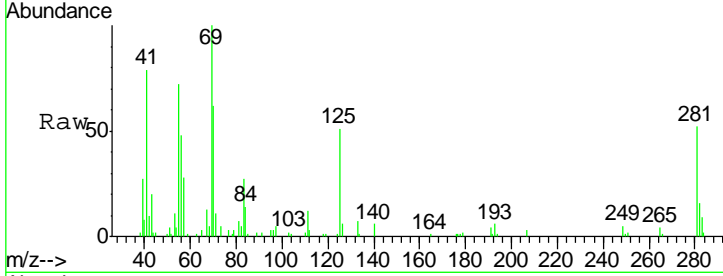




#75
 1,1,2,2-Tetrachloroethane
 Concen: 2.585 ug/l
 RT: 12.08 min Scan# 1204
 Delta R.T. 0.00 min
 Lab File: VD058021.D
 Acq: 8 Jun 2018 16:45

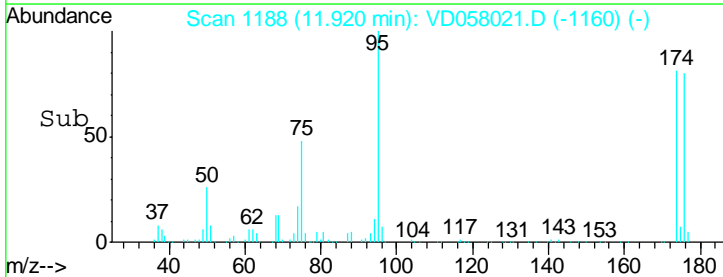
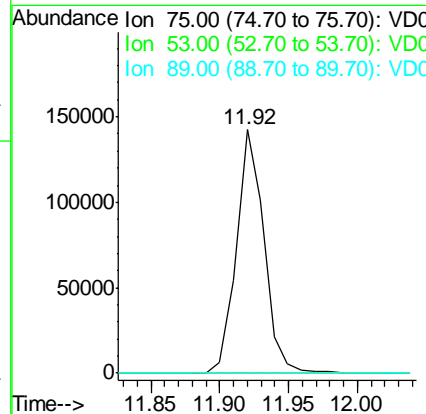
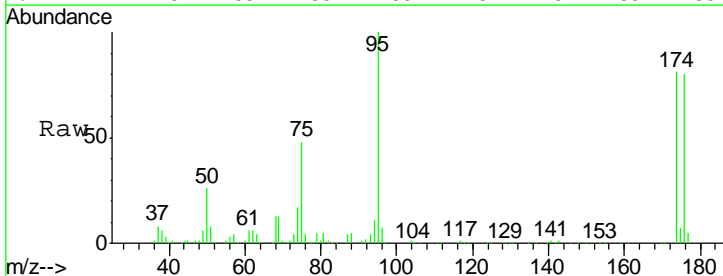
Instrument :
 MSVOA_D
 ClientSampled :

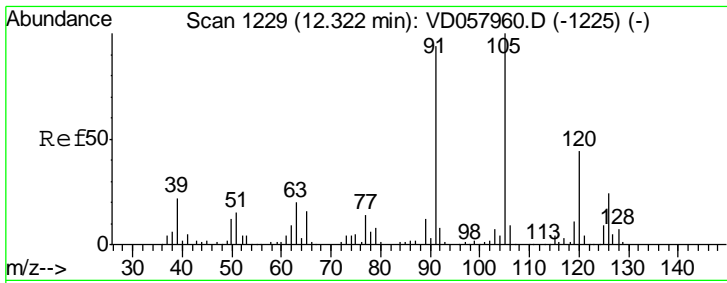
Tgt Ion	Resp	Lower	Upper
83	13988		
131	0.0	4.2	12.6#
85	5.1	31.9	95.5#



#81
 trans-1,4-Dichloro-2-butene
 Concen: 141.598 ug/l
 RT: 11.92 min Scan# 1188
 Delta R.T. 0.08 min
 Lab File: VD058021.D
 Acq: 8 Jun 2018 16:45

Tgt Ion	Resp	Lower	Upper
75	197412		
53	0.0	89.3	133.9#
89	0.0	33.3	49.9#

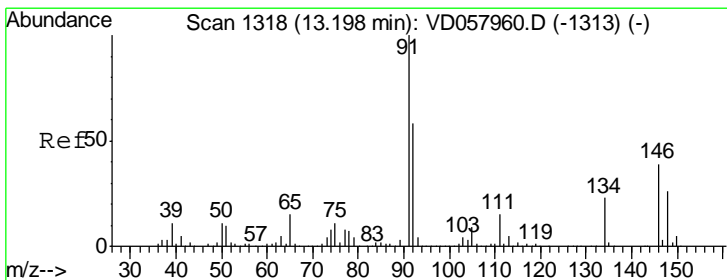
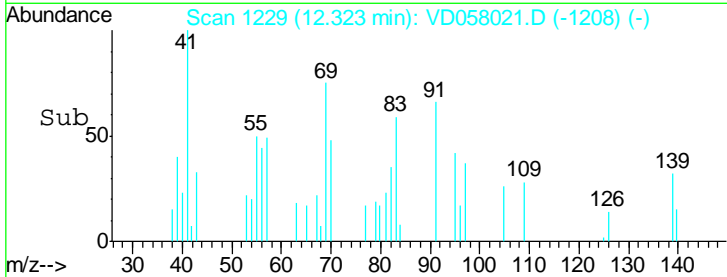
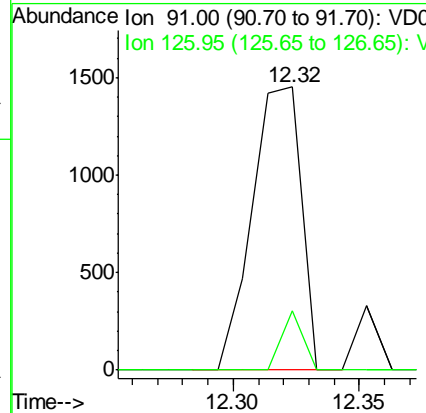
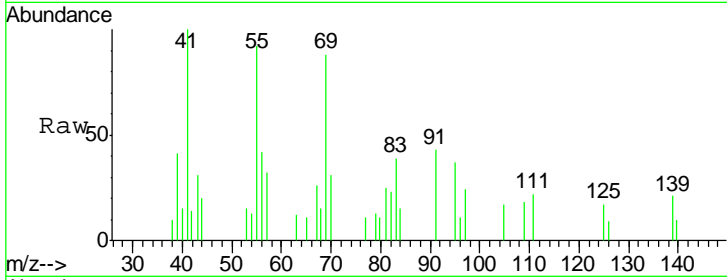




#82
 4-Chlorotoluene
 Concen: Below Cal
 RT: 12.32 min Scan# 1229
 Delta R.T. 0.00 min
 Lab File: VD058021.D
 Acq: 8 Jun 2018 16:45

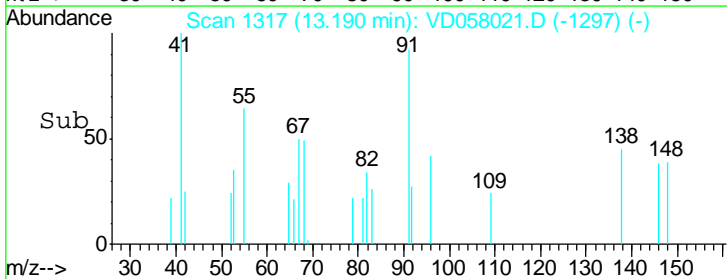
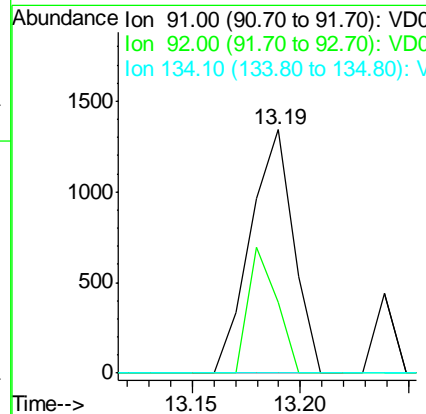
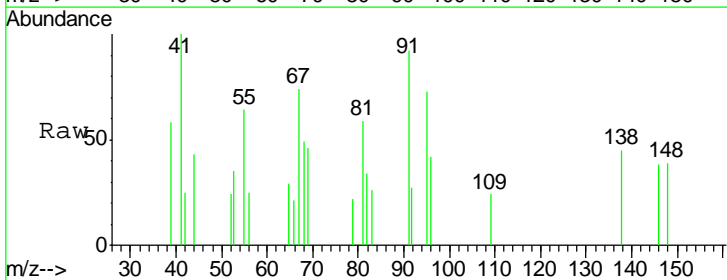
Instrument : MSVOA_D
 ClientSampled :

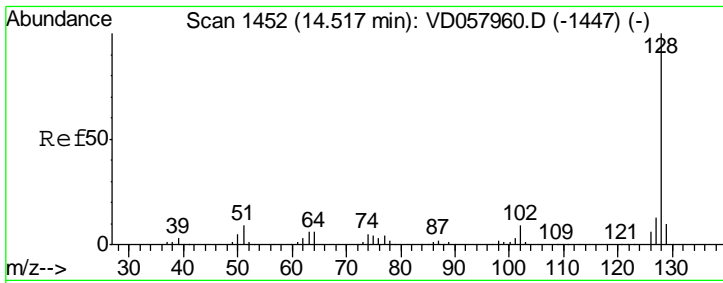
Tgt Ion: 91 Resp: 1973
 Ion Ratio Lower Upper
 91 100
 126 20.7 12.5 37.5



#89
 n-Butylbenzene
 Concen: Below Cal
 RT: 13.19 min Scan# 1317
 Delta R.T. -0.01 min
 Lab File: VD058021.D
 Acq: 8 Jun 2018 16:45

Tgt Ion: 91 Resp: 1877
 Ion Ratio Lower Upper
 91 100
 92 29.3 29.2 87.6
 134 0.0 11.3 33.9#





#95
 Naphthalene
 Concen: 3.481 ug/l
 RT: 14.51 min Scan# 1451
 Delta R.T. -0.01 min
 Lab File: VD058021.D
 Acq: 8 Jun 2018 16:45

Instrument : MSVOA_D
 ClientSampled :

Tot Ion: 128 Resp: 42110

Ion	Ratio	Lower	Upper
128	100		
127	13.9	10.2	15.2
129	10.3	8.2	12.2

